

TAMPA HARBOR ZONE 7 UPPER HILLSBOROUGH BAY HILLSBOROUGH COUNTY, FLORIDA EXAMINATION SURVEY FY17 12, 34 AND 43-FOOT PROJECT

SURVEY NOTES

- REFER TO SURVEY NO. 17-097.
 - DEPTHS DEPICTED BY THIS SURVEY ARE REFERENCED TO MEAN LOWER LOW WATER (MLLW), TIDAL EPOCH 1983-2001 AS REPORTED BY THE NATIONAL OCEANIC AND ATMOSPHERIC ADMINISTRATION (NOAA). NOAA'S VDATUM MODEL WAS USED AND CALIBRATED TO THE PUBLISHED MLLW HEIGHTS OF THE BENCH MARKS ASSOCIATED WITH THE TIDE GAGE SITE SPECIFIED BELOW:

NOAA TIDAL STATION 872-6657, DAVIS ISLAND, HILLSBOROUGH BAY FOR UPPER TAMPA CHANNELS
 - TIDAL REDUCTIONS WERE OBTAINED UTILIZING A REAL-TIME KINEMATIC (RTK) GPS AND REFERENCED TO MLLW UTILIZING A HYPACK KINEMATIC TIDE DATUM (KTD) MODEL NAMED "SPC-FL-WEST-2010-12-07.KTD"
 - ALL ELEVATIONS ARE BELOW THE CHART DATUM UNLESS PRECEDED BY A (+) SIGN.
 - PLANE COORDINATES ARE BASED ON THE TRANSVERSE MERCATOR PROJECTION FOR THE WEST ZONE OF FLORIDA AND REFERENCED TO NORTH AMERICAN DATUM OF 1983 (NAD83).
 - ALL STATIONING REFERS TO THE CENTERLINE OF THE CHANNEL.
 - THIS SURVEY WAS PERFORMED USING REAL-TIME KINEMATIC (RTK) GPS POSITIONING WITH THE FOLLOWING REFERENCE BASE LOCATIONS:

REFERENCE BASE LOCATED AT "Q-261" (NGS PID: AG6024)

TIDE STAFF LOCATED FROM TIDAL BENCHMARK "Q-261" (NGS PID: AG6024)
 - VERTICAL MEASUREMENTS WERE MADE USING A ROSS MODEL 835 SMARTSOUNDER WITH DUAL-FREQUENCY (28200 KHZ) SINGLE-BEAM TRANSDUCER AND AN EDGETECH 6205 COMBINED MULTI-BEAM AND SIDESCAN. SOUNDINGS SHOWN FOR PORT SUTTON TERMINAL CHANNEL ARE SHOWN IN HIGH FREQUENCY, ALL OTHER SOUNDINGS ARE SHOWN IN LOW FREQUENCY.
- | VESSEL | DATE OF SURVEY | CUT |
|--------|----------------|--|
| SB-44 | 27 FEB 2017 | SEDDON CHANNEL |
| SB-44 | 28 FEB 2017 | YBOR CH., UPPER SPARKMAN CH. |
| SB-44 | 01 MAR 2017 | LOWER SPARKMAN CHANNEL, PORT SUTTON CHANNEL, PORT SUTTON TURNING BASIN, PORT SUTTON TERMINAL CHANNEL |
| SB-44 | 02 MAR 2017 | EAST BAY CHANNEL, EAST BAY CHANNEL EXTENSION 1 |
| SB-44 | 03 MAR 2017 | EAST BAY CHANNEL EXTENSION 2 |
- AIDS TO NAVIGATION WERE LOCATED DURING THIS SURVEY.
 - THE INFORMATION DEPICTED ON THIS MAP REPRESENTS THE RESULTS OF SURVEYS MADE ON THE DATES INDICATED ABOVE AND CAN ONLY BE CONSIDERED AS INDICATING THE GENERAL CONDITIONS AT THAT TIME. THIS CHART IS SOLELY FOR THE DISTRIBUTION OF AVAILABLE DEPTHS AT THE TIME OF THE SURVEY.
 - SURVEY ACCURACY PERFORMANCE STANDARDS, QUALITY CONTROL, AND QUALITY ASSURANCE REQUIREMENTS WERE FOLLOWED DURING THIS SURVEY IN ACCORDANCE WITH USACE EM 1110-2-1003, HYDROGRAPHIC SURVEYING, 30 NOV 13.
 - THIS MAP SET IS AN UNOFFICIAL MAP SET. OFFICIAL MAPS ARE NOW DISTRIBUTED THROUGH eHydro AND CAN BE ACCESSED BY GOING TO THE FOLLOWING LINK: [HTTP://NAVIGATION.USACE.ARMY.MIL/SURVEY/HYDRO](http://navigation.usace.army.mil/survey/hydro)

SURVEY ZONE	CUTS
4	CUT-F, CUT-G, GADSDEN POINT CUT
5	CUT-J, CUT-J2, CUT-K
6	CUT-A (HB), CUT-C (HB), CUT-D (HB)
7	LOWER & UPPER SPARKMAN, YBOR CH., SEDDON CH., PORT SUTTON CH., PORT SUTTON T.B., PORT SUTTON TERMINAL CH., EAST BAY CH., EAST BAY CHANNEL EXTENSIONS 1 & 2

LEGEND	
	MONUMENT
	LIGHTED BEACON
	GREEN DAYBEACON
	RED DAYBEACON
	RED LIGHTED BUOY
	GREEN LIGHTED BUOY
	CAN BUOY
	NUN BUOY
	TIDE STAFF
	PROJECT DEPTH

US Army Corps of Engineers
Jacksonville District

SAFETY ON THIS JOB
DEPENDS ON YOU

DEPARTMENT OF THE ARMY
JACKSONVILLE DISTRICT, CORPS OF ENGINEERS
JACKSONVILLE, FLORIDA

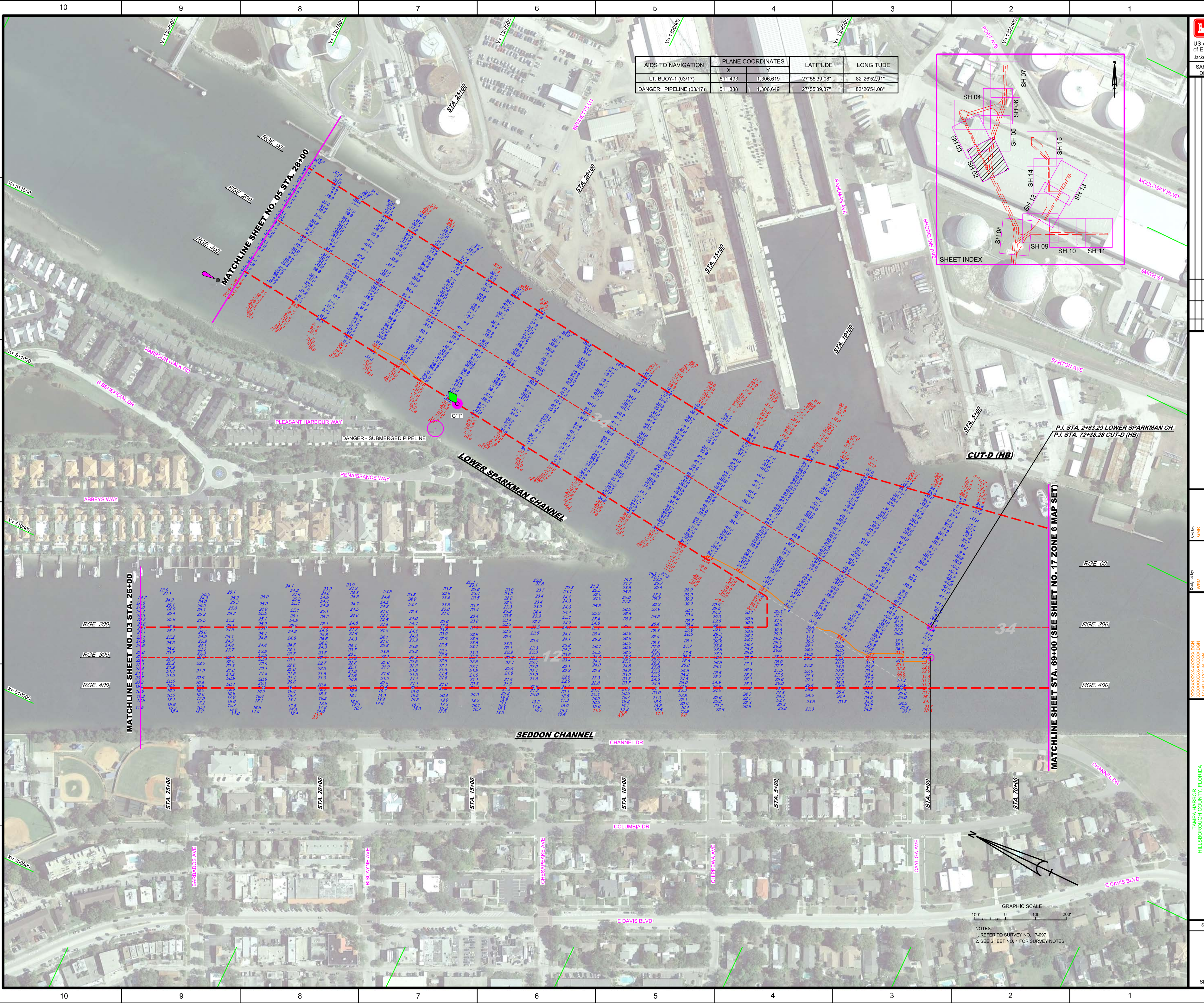
Check by: GMR
Designed by: WRM
Drawn by: WRM
File No.: TAMPA HARBOR-C-12-07.DGN
Date: MAR 2017

TAMPA HARBOR
HILLSBOROUGH COUNTY, FLORIDA
**HYDROGRAPHIC EXAM SURVEY FY17
12, 34 AND 43-FOOT PROJECT**
INDEX, LOCATION AND VICINITY MAP

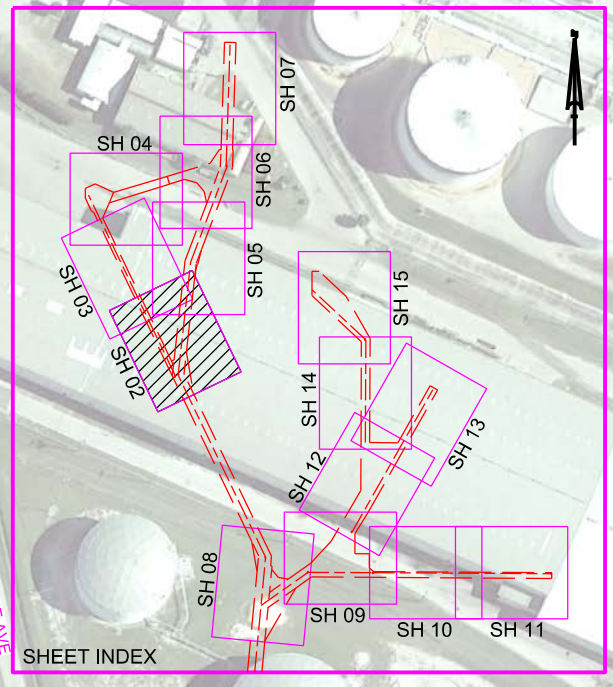
Scale: AS SHOWN

Drawing no.
1

SHEET 01 OF 15



AIDS TO NAVIGATION	PLANE COORDINATES		LATITUDE	LONGITUDE
	X	Y		
LT. BUOY-1 (03/17)	511,493	1,306,619	27°55'39.08"	82°26'52.91"
DANGER: PIPELINE (03/17)	511,388	1,306,649	27°55'39.37"	82°26'54.08"



MATCHLINE SHEET NO. 03 STA. 26+00

MATCHLINE SHEET STA. 69+00 (SEE SHEET NO. 17 ZONE 6 MAP SET)

US Army Corps of Engineers

 Jacksonville District

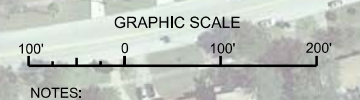
SAFETY ON THIS JOB DEPENDS ON YOU

Department of the Army
 Jacksonville District, Corps of Engineers
 Jacksonville, Florida

Checked By: **GWR**
 Designed By: **WRH**, **WRM**, **WRW**
 Drawn By: **WRH**, **WRW**
 Issue Date: **MAR 2017**
 Revision: **MAR 2017**

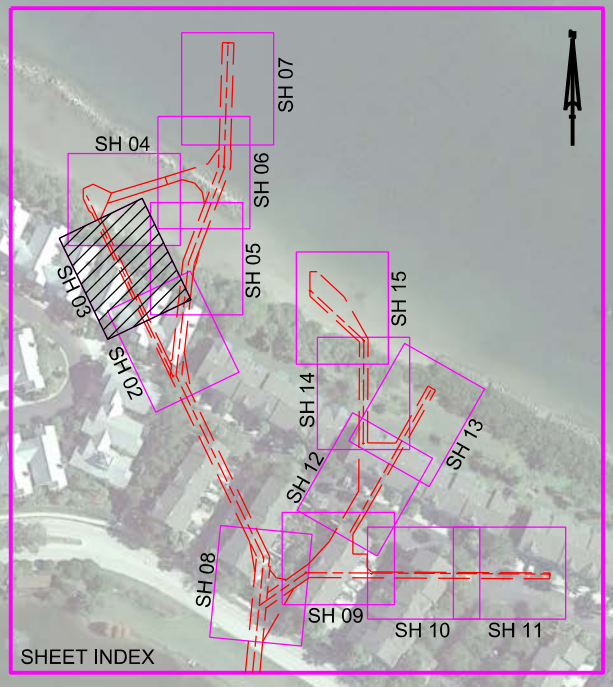
HYDROGRAPHIC EXAM SURVEY FY17
12, 34 AND 43-FOOT PROJECT
 STA. 69+00 CUT-D (HB) THRU STA. 26+00 SEDDON CHANNEL
 AND STA. 2+63.29 THRU STA. 72+88.28 LOWER SPARKMAN CHANNEL

PLAN



NOTES:
 1. REFER TO SURVEY NO. 17-097.
 2. SEE SHEET NO. 1 FOR SURVEY NOTES.

AIDS TO NAVIGATION	PLANE COORDINATES		LATITUDE	LONGITUDE
	X	Y		
SIGN (03/17)	509,925	1,308,477	27°55'57.42"	82°27'10.47"
SIGN (03/17)	509,552	1,308,211	27°55'54.77"	82°27'14.61"
SIGN (03/17)	509,075	1,309,229	27°56'04.83"	82°27'19.97"
SIGN (03/17)	510,064	1,307,186	27°55'44.64"	82°27'08.86"
SIGN (03/17)	510,434	1,307,410	27°55'46.88"	82°27'04.75"



US Army Corps of Engineers
Jacksonville District

SAFETY ON THIS JOB
DEPENDS ON YOU

DEPARTMENT OF THE ARMY
JACKSONVILLE DISTRICT, CORPS OF ENGINEERS
JACKSONVILLE, FLORIDA

Checked by:	GHM
Designed by:	WBM
Drawn by:	WBM
Field Notes:	WBM
Date:	MAR 2017

TAMPA HARBOR
HILLSBOROUGH COUNTY, FLORIDA

**HYDROGRAPHIC EXAM SURVEY FY17
12, 34 AND 43-FOOT PROJECT**

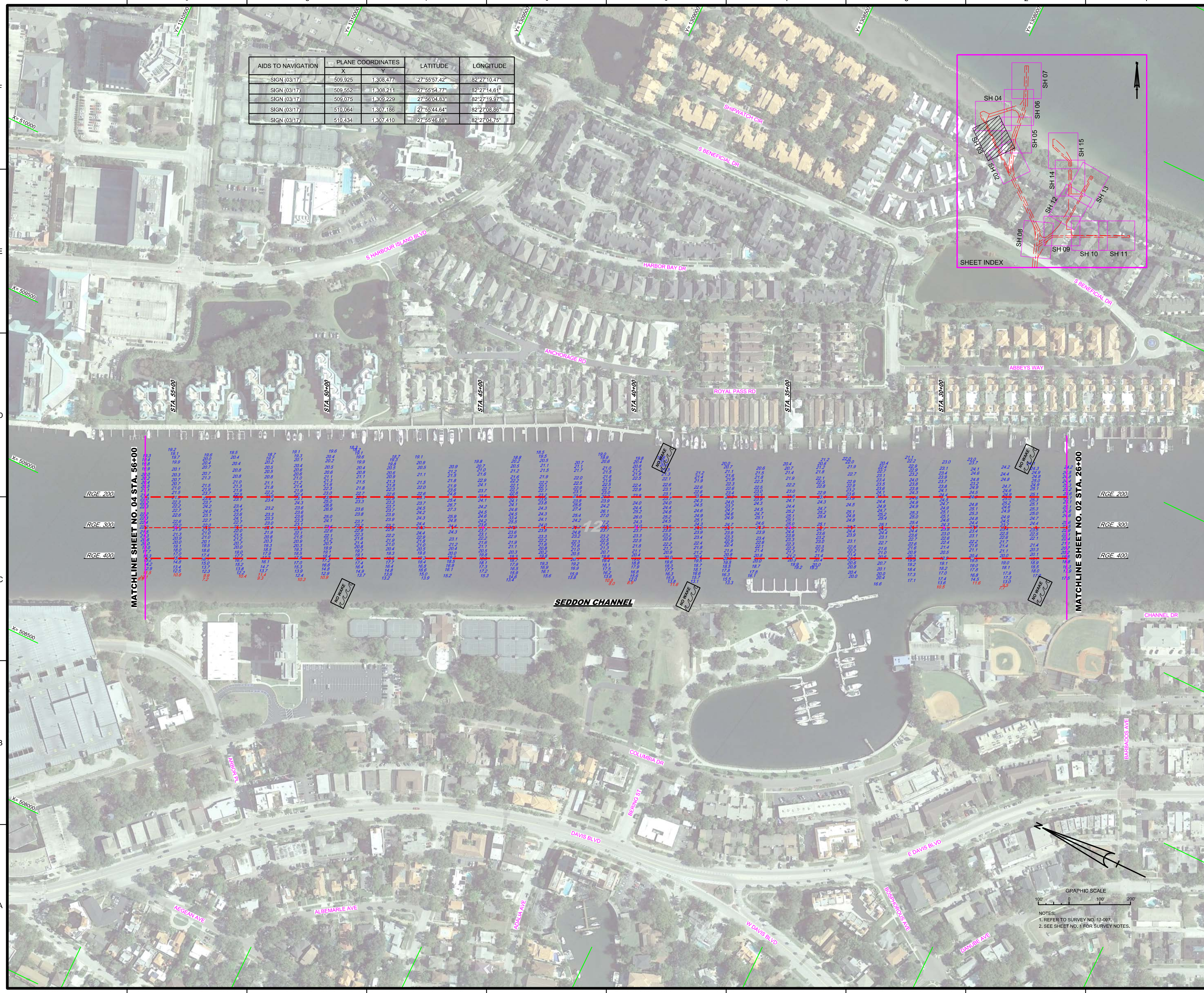
STA. 26+00 THRU STA. 56+00 SEDDON CHANNEL

PLAN

Scale: AS SHOWN

Drawing no. **3**

SHEET 03 OF 15

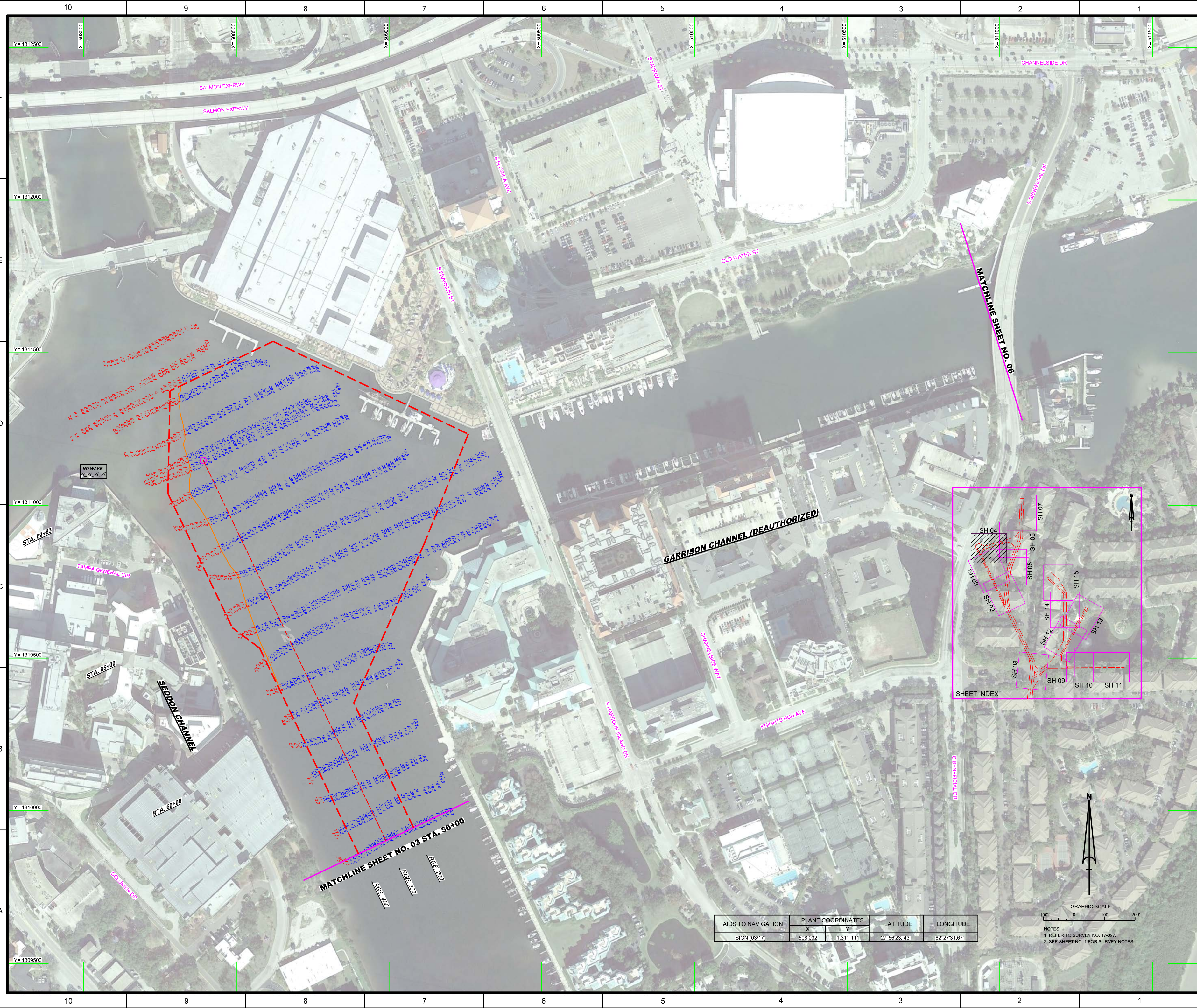


MATCHLINE SHEET NO. 04 STA. 56+00

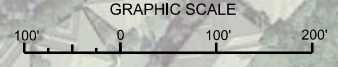
MATCHLINE SHEET NO. 02 STA. 26+00

GRAPHIC SCALE
100' 0 100' 200'

NOTES:
1. REFER TO SURVEY NO. 17-097.
2. SEE SHEET NO. 1 FOR SURVEY NOTES.



AIDS TO NAVIGATION	PLANE COORDINATES		LATITUDE	LONGITUDE
	X	Y		
SIGN (03/17)	508,032	1,311,111	27°56'23.43"	82°27'31.67"



NOTES:
1. REFER TO SURVEY NO. 17-097.
2. REFER SHEET NO. 1 FOR SURVEY NOTES.

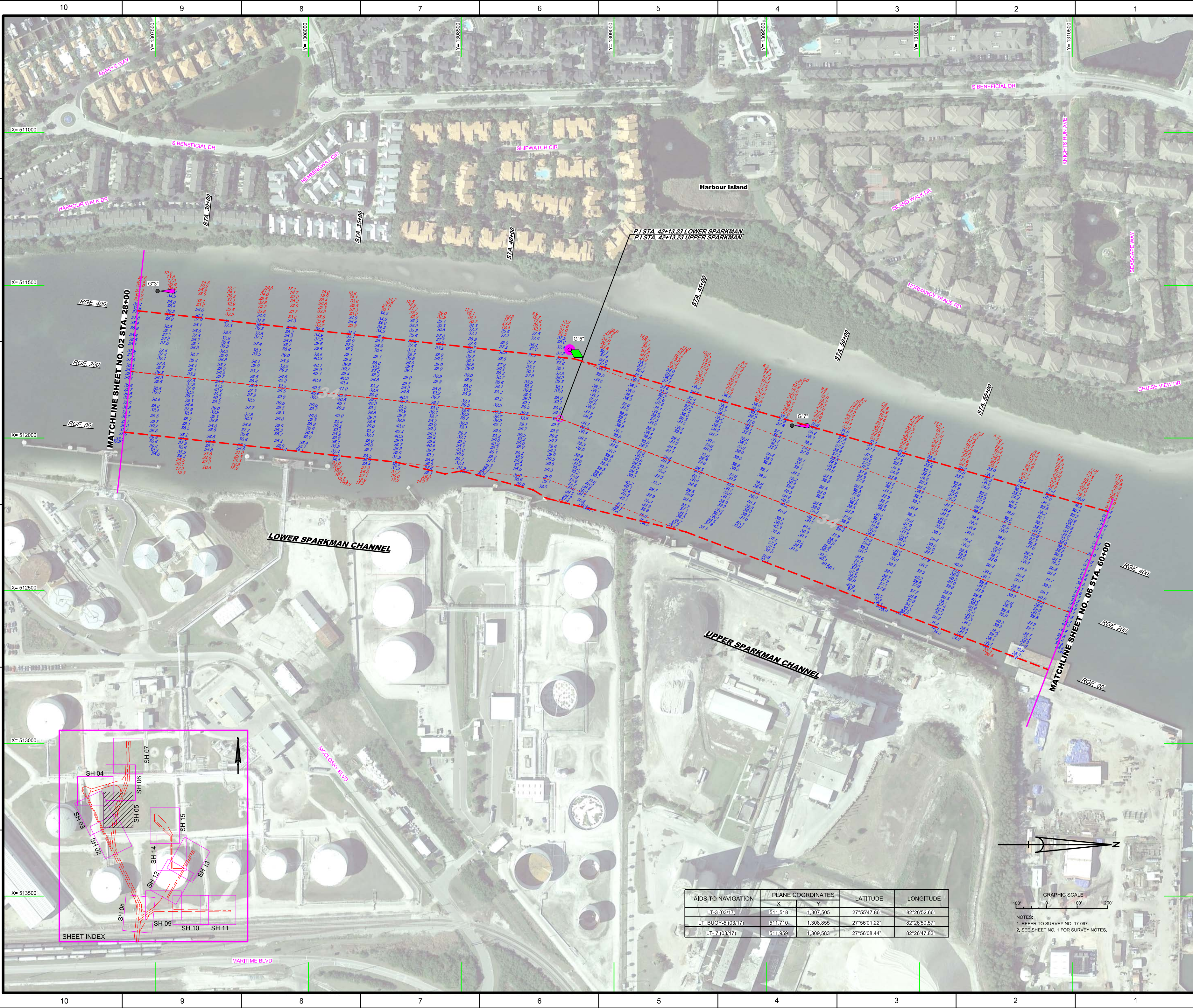
DEPARTMENT OF THE ARMY
JACKSONVILLE DISTRICT, CORPS OF ENGINEERS
JACKSONVILLE, FLORIDA

Check By: GHR
Designed By: WRM
Drawn By: WRM
File No.: 17-097-PAV-CON12.DGN
Reference File: 17-097-PAV-PAV_L7.DGN
Date: MAR 2017

TAMPA HARBOR
HILLSBOROUGH COUNTY, FLORIDA
**HYDROGRAPHIC EXAM SURVEY FY17
12, 34 AND 43-FOOT PROJECT**
STA. 56+00 THRU STA. 69+83 SEDDON CHANNEL
PLAN

Scale: AS SHOWN


Drawing no.
4



AIDS TO NAVIGATION	PLANE COORDINATES		LATITUDE	LONGITUDE
	X	Y		
LT-3 (0347)	511,518	1,307,505	27°55'47.86"	82°26'52.66"
LT BUOY-5 (0347)	511,710	1,308,855	27°56'01.22"	82°26'50.57"
LT-7 (0347)	511,859	1,309,583	27°56'08.44"	82°26'47.83"



NOTES:
 1. REFER TO SURVEY NO. 17-097.
 2. SEE SHEET NO. 1 FOR SURVEY NOTES.



US Army Corps of Engineers
 Jacksonville District
 SAFETY ON THIS JOB
 DEPENDS ON YOU

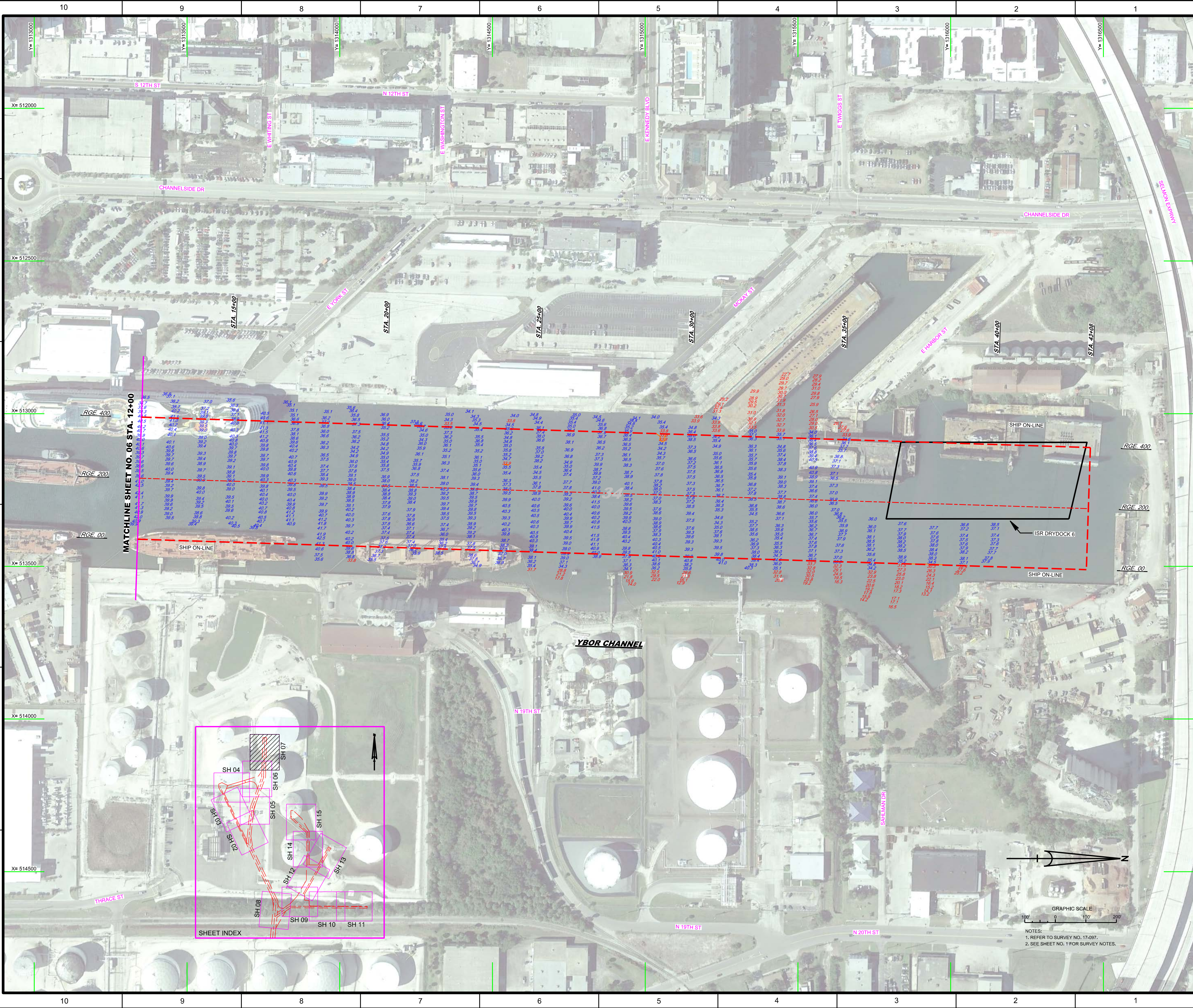
DEPARTMENT OF THE ARMY
 JACKSONVILLE DISTRICT, CORPS OF ENGINEERS
 JACKSONVILLE, FLORIDA

Designated By: GHR
 Drawn By: WRM
 Check By: WRM
 Date: MAR 2017

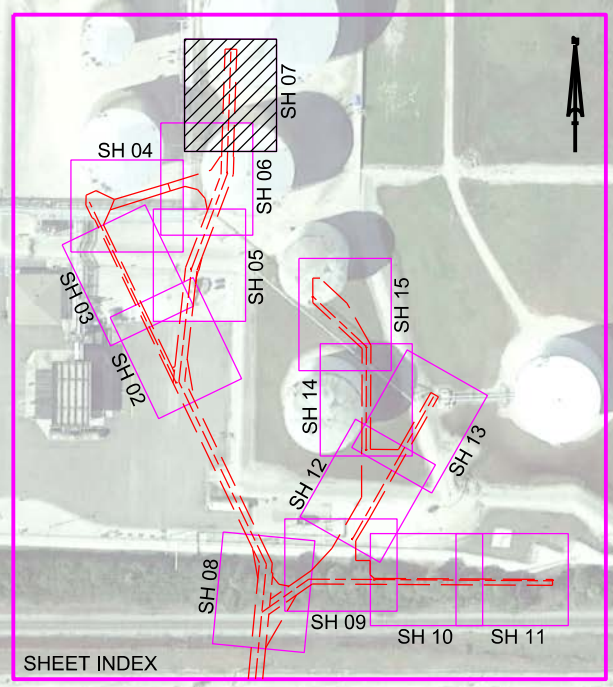
XXXXXXXXXXXXXXXXXXXX.DGN
 XXXXXXXXXXXXXXXXXXXX.DGN
 XXXXXXXXXXXXXXXXXXXX.DGN
 T:\2017\A\17-097\A\17-097-01.dwg
 T:\2017\A\17-097\A\17-097-02.dwg
 T:\2017\A\17-097\A\17-097-03.dwg
 T:\2017\A\17-097\A\17-097-04.dwg
 T:\2017\A\17-097\A\17-097-05.dwg
 T:\2017\A\17-097\A\17-097-06.dwg
 T:\2017\A\17-097\A\17-097-07.dwg
 T:\2017\A\17-097\A\17-097-08.dwg
 T:\2017\A\17-097\A\17-097-09.dwg
 T:\2017\A\17-097\A\17-097-10.dwg
 T:\2017\A\17-097\A\17-097-11.dwg
 T:\2017\A\17-097\A\17-097-12.dwg
 T:\2017\A\17-097\A\17-097-13.dwg
 T:\2017\A\17-097\A\17-097-14.dwg
 T:\2017\A\17-097\A\17-097-15.dwg
 T:\2017\A\17-097\A\17-097-16.dwg
 T:\2017\A\17-097\A\17-097-17.dwg
 T:\2017\A\17-097\A\17-097-18.dwg
 T:\2017\A\17-097\A\17-097-19.dwg
 T:\2017\A\17-097\A\17-097-20.dwg
 T:\2017\A\17-097\A\17-097-21.dwg
 T:\2017\A\17-097\A\17-097-22.dwg
 T:\2017\A\17-097\A\17-097-23.dwg
 T:\2017\A\17-097\A\17-097-24.dwg
 T:\2017\A\17-097\A\17-097-25.dwg
 T:\2017\A\17-097\A\17-097-26.dwg
 T:\2017\A\17-097\A\17-097-27.dwg
 T:\2017\A\17-097\A\17-097-28.dwg
 T:\2017\A\17-097\A\17-097-29.dwg
 T:\2017\A\17-097\A\17-097-30.dwg
 T:\2017\A\17-097\A\17-097-31.dwg
 T:\2017\A\17-097\A\17-097-32.dwg
 T:\2017\A\17-097\A\17-097-33.dwg
 T:\2017\A\17-097\A\17-097-34.dwg
 T:\2017\A\17-097\A\17-097-35.dwg
 T:\2017\A\17-097\A\17-097-36.dwg
 T:\2017\A\17-097\A\17-097-37.dwg
 T:\2017\A\17-097\A\17-097-38.dwg
 T:\2017\A\17-097\A\17-097-39.dwg
 T:\2017\A\17-097\A\17-097-40.dwg
 T:\2017\A\17-097\A\17-097-41.dwg
 T:\2017\A\17-097\A\17-097-42.dwg
 T:\2017\A\17-097\A\17-097-43.dwg
 T:\2017\A\17-097\A\17-097-44.dwg
 T:\2017\A\17-097\A\17-097-45.dwg
 T:\2017\A\17-097\A\17-097-46.dwg
 T:\2017\A\17-097\A\17-097-47.dwg
 T:\2017\A\17-097\A\17-097-48.dwg
 T:\2017\A\17-097\A\17-097-49.dwg
 T:\2017\A\17-097\A\17-097-50.dwg
 T:\2017\A\17-097\A\17-097-51.dwg
 T:\2017\A\17-097\A\17-097-52.dwg
 T:\2017\A\17-097\A\17-097-53.dwg
 T:\2017\A\17-097\A\17-097-54.dwg
 T:\2017\A\17-097\A\17-097-55.dwg
 T:\2017\A\17-097\A\17-097-56.dwg
 T:\2017\A\17-097\A\17-097-57.dwg
 T:\2017\A\17-097\A\17-097-58.dwg
 T:\2017\A\17-097\A\17-097-59.dwg
 T:\2017\A\17-097\A\17-097-60.dwg
 T:\2017\A\17-097\A\17-097-61.dwg
 T:\2017\A\17-097\A\17-097-62.dwg
 T:\2017\A\17-097\A\17-097-63.dwg
 T:\2017\A\17-097\A\17-097-64.dwg
 T:\2017\A\17-097\A\17-097-65.dwg
 T:\2017\A\17-097\A\17-097-66.dwg
 T:\2017\A\17-097\A\17-097-67.dwg
 T:\2017\A\17-097\A\17-097-68.dwg
 T:\2017\A\17-097\A\17-097-69.dwg
 T:\2017\A\17-097\A\17-097-70.dwg
 T:\2017\A\17-097\A\17-097-71.dwg
 T:\2017\A\17-097\A\17-097-72.dwg
 T:\2017\A\17-097\A\17-097-73.dwg
 T:\2017\A\17-097\A\17-097-74.dwg
 T:\2017\A\17-097\A\17-097-75.dwg
 T:\2017\A\17-097\A\17-097-76.dwg
 T:\2017\A\17-097\A\17-097-77.dwg
 T:\2017\A\17-097\A\17-097-78.dwg
 T:\2017\A\17-097\A\17-097-79.dwg
 T:\2017\A\17-097\A\17-097-80.dwg
 T:\2017\A\17-097\A\17-097-81.dwg
 T:\2017\A\17-097\A\17-097-82.dwg
 T:\2017\A\17-097\A\17-097-83.dwg
 T:\2017\A\17-097\A\17-097-84.dwg
 T:\2017\A\17-097\A\17-097-85.dwg
 T:\2017\A\17-097\A\17-097-86.dwg
 T:\2017\A\17-097\A\17-097-87.dwg
 T:\2017\A\17-097\A\17-097-88.dwg
 T:\2017\A\17-097\A\17-097-89.dwg
 T:\2017\A\17-097\A\17-097-90.dwg
 T:\2017\A\17-097\A\17-097-91.dwg
 T:\2017\A\17-097\A\17-097-92.dwg
 T:\2017\A\17-097\A\17-097-93.dwg
 T:\2017\A\17-097\A\17-097-94.dwg
 T:\2017\A\17-097\A\17-097-95.dwg
 T:\2017\A\17-097\A\17-097-96.dwg
 T:\2017\A\17-097\A\17-097-97.dwg
 T:\2017\A\17-097\A\17-097-98.dwg
 T:\2017\A\17-097\A\17-097-99.dwg
 T:\2017\A\17-097\A\17-097-100.dwg

TAMPA HARBOR
 HILLSBOROUGH COUNTY, FLORIDA
**HYDROGRAPHIC EXAM SURVEY FY17
 12, 34 AND 43-FOOT PROJECT**
 STA. 28+00 LOWER SPARKMAN CH. THRU STA. 60+00 UPPER SPARKMAN CH.
PLAN


Scale: AS SHOWN
 Drawing no.
5
 SHEET 05 OF 15



MATCHLINE SHEET NO. 06 STA. 12+00



GRAPHIC SCALE
0 100 200
NOTES:
1. REFER TO SURVEY NO. 17-1097.
2. SEE SHEET NO. 1 FOR SURVEY NOTES.



US Army Corps
of Engineers
Jacksonville District

SAFETY ON THIS JOB
DEPENDS ON YOU

DATE	DRAWN BY	CHECKED BY	DATE	DRAWN BY	CHECKED BY	DATE	DRAWN BY	CHECKED BY	DATE

DEPARTMENT OF THE ARMY
JACKSONVILLE DISTRICT, CORPS OF ENGINEERS
JACKSONVILLE, FLORIDA

Call by: GHR

Designed by: WRM

Drawn by: WRM

Checked by: WRM

Date: MAR 2017

TAMPA HARBOR
HILLSBOROUGH COUNTY, FLORIDA

**HYDROGRAPHIC EXAM SURVEY FY17
12, 34 AND 43-FOOT PROJECT**

STA. 12+00 THRU STA. 43+08 YBOR CHANNEL

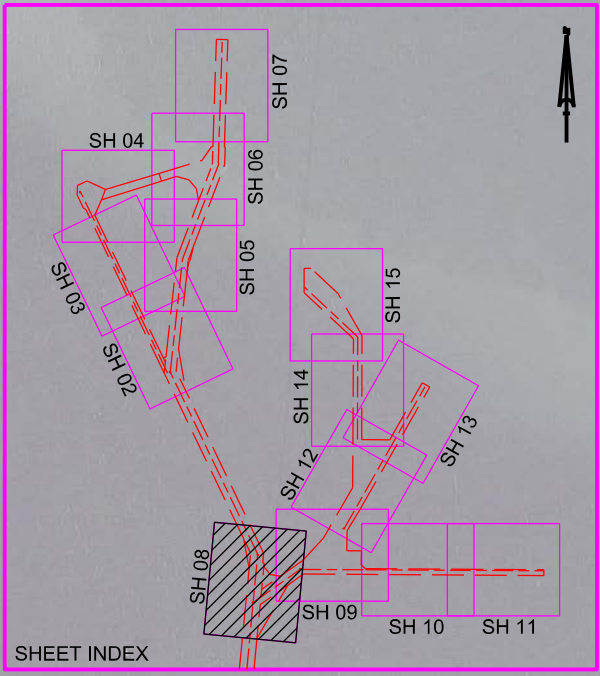
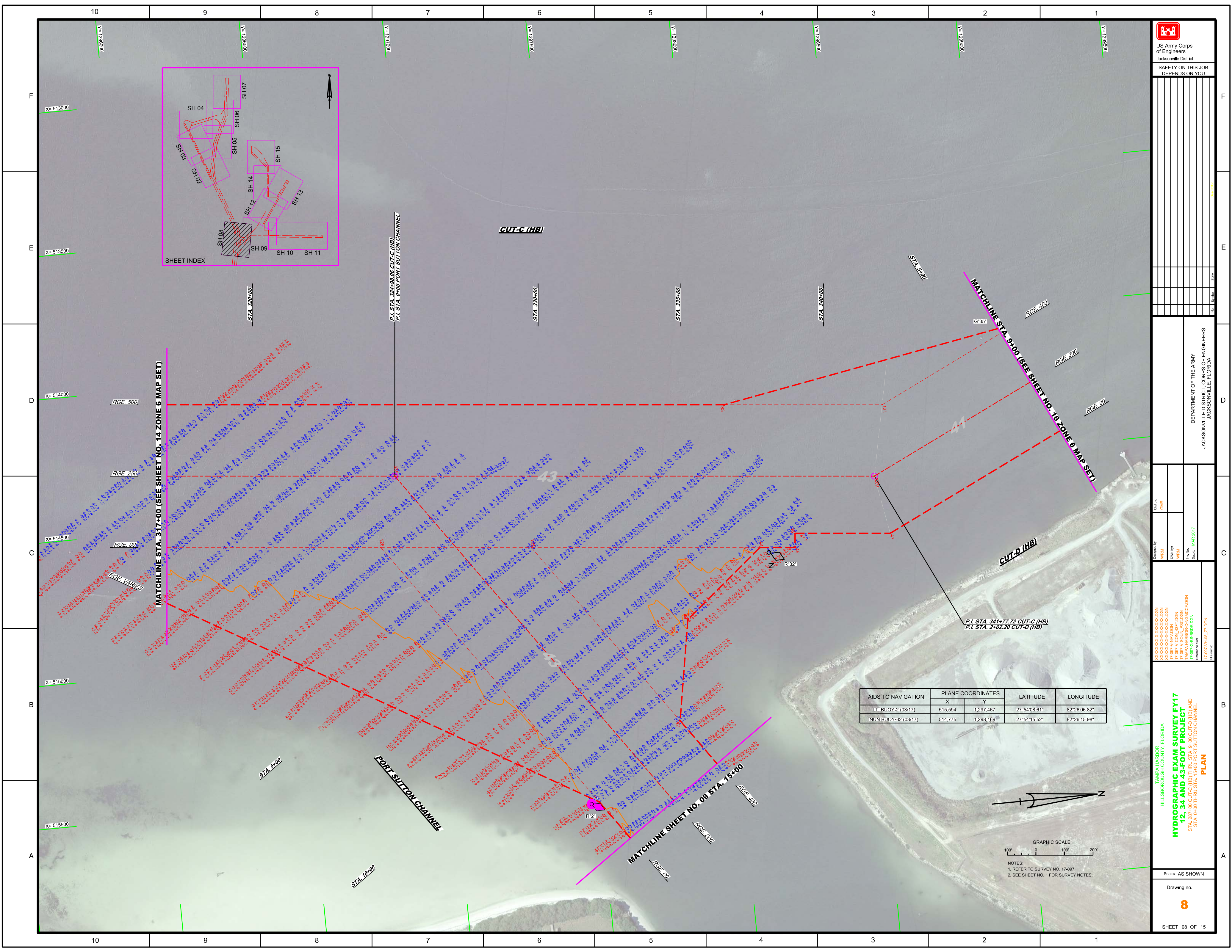
PLAN

Scale: AS SHOWN

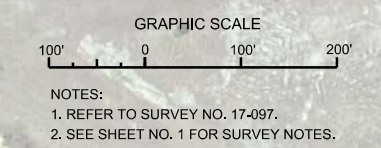
Drawing no.


7

SHEET 07 OF 15



AIDS TO NAVIGATION	PLANE COORDINATES		LATITUDE	LONGITUDE
	X	Y		
LT. BUOY-2 (03/17)	515.594	1,297.467	27°54'08.61"	82°26'06.82"
NUN BUOY-32 (03/17)	514.775	1,298.169	27°54'15.52"	82°26'15.98"





US Army Corps
of Engineers
Jacksonville District

SAFETY ON THIS JOB
DEPENDS ON YOU

DEPARTMENT OF THE ARMY
JACKSONVILLE DISTRICT, CORPS OF ENGINEERS
JACKSONVILLE, FLORIDA

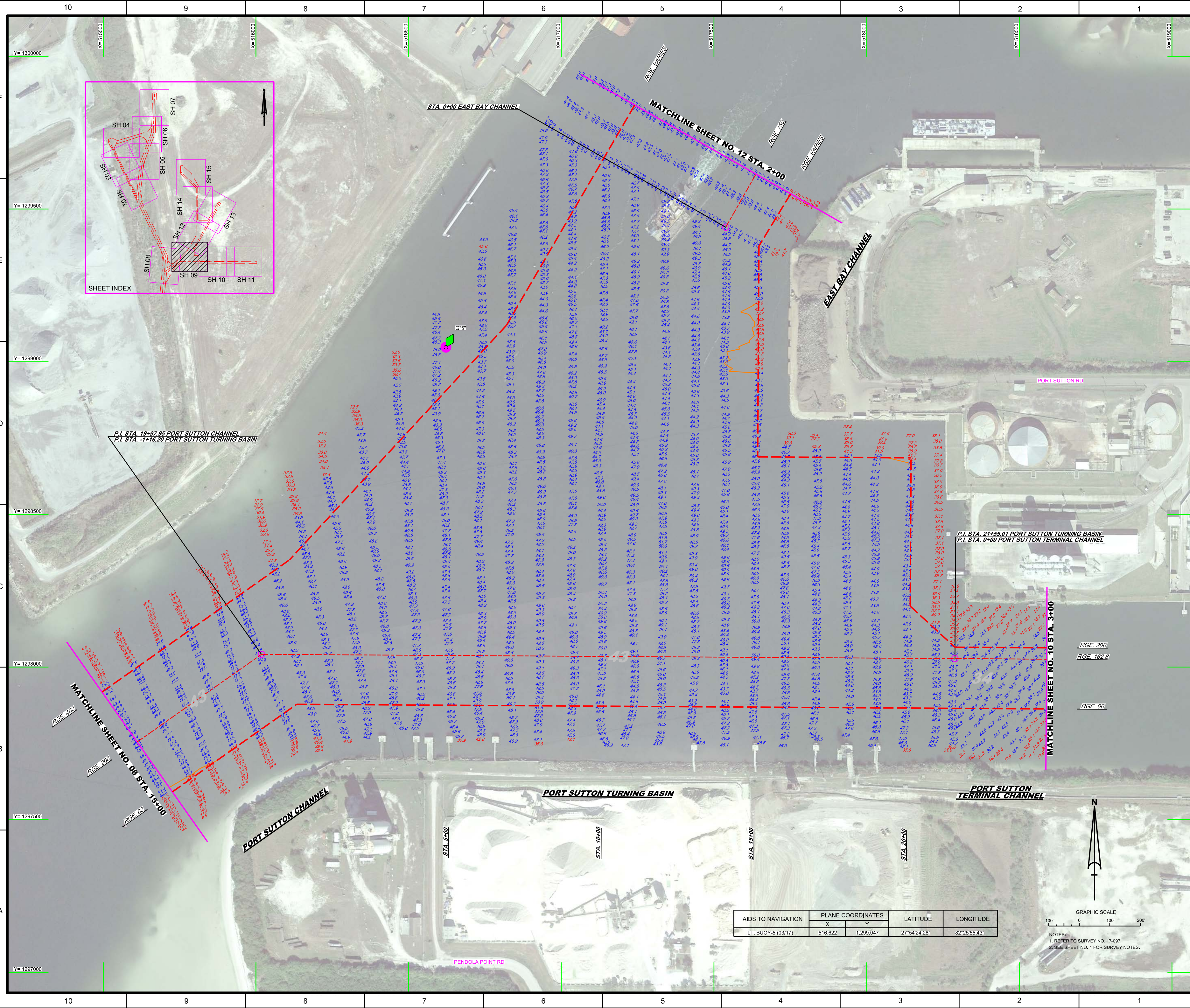
Checked by: GHR
Designed by: WRM
Drawn by: WRM
File No.: MAR 2017
Reference files: T:\2017\HARBOR_27.DGN

TAMPA HARBOR
HILLSBOROUGH COUNTY, FLORIDA
**HYDROGRAPHIC EXAM SURVEY FY17
12, 34 AND 43-FOOT PROJECT**
STA. 287+00 CUT-C (HB) THRU STA. 8+00 CUT-D (HB) AND
STA. 0+00 THRU STA. 15+00 PORT SUTTON CHANNEL
PLAN

Scale: AS SHOWN

Drawing no.
8

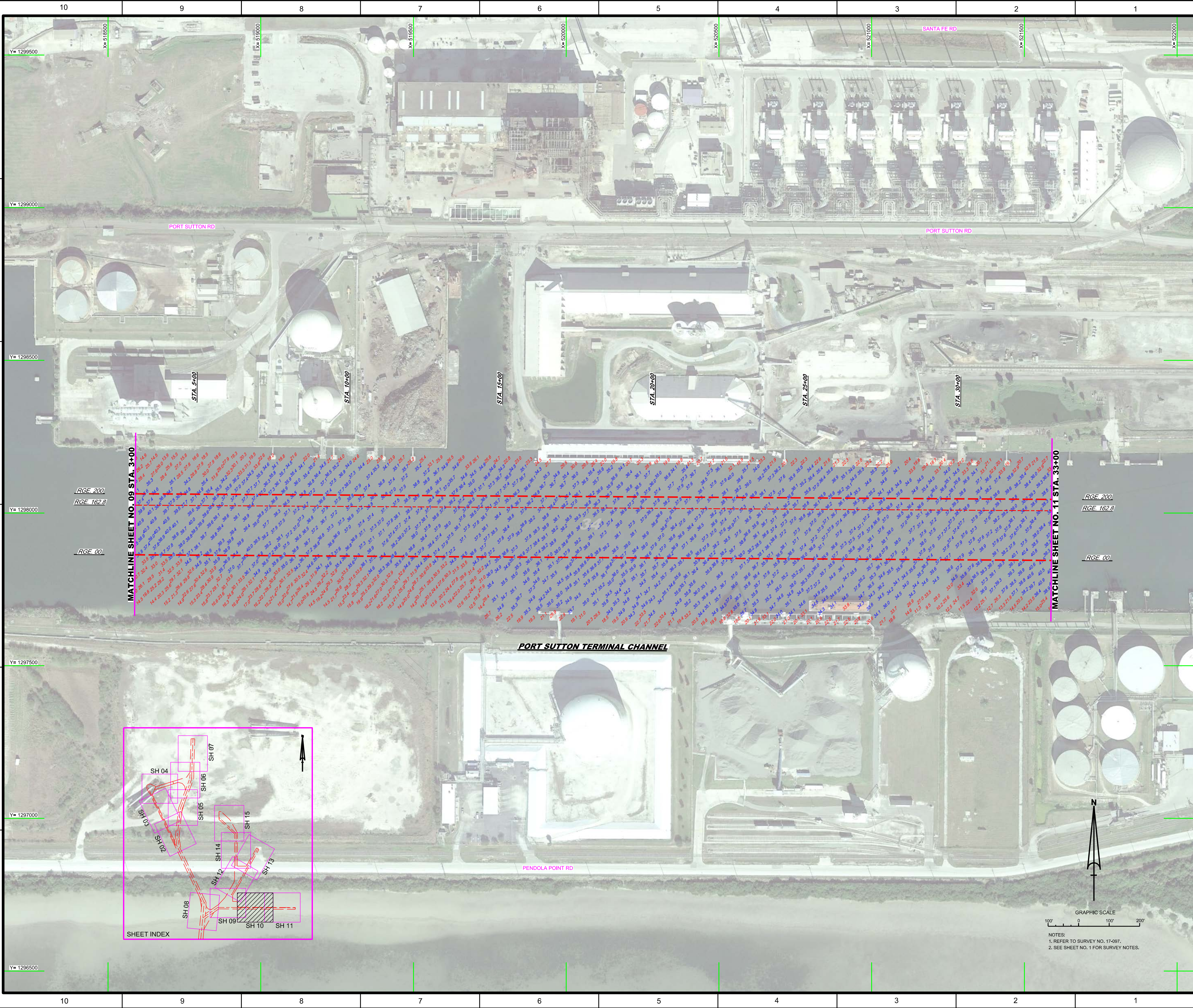
SHEET 08 OF 15



AIDS TO NAVIGATION	PLANE COORDINATES		LATITUDE	LONGITUDE
	X	Y		
LT. BUOY-5 (03/17)	516,822	1,299,047	27°54'24.28"	82°25'55.43"

GRAPHIC SCALE
100' 0 100' 200'

NOTES:
1. REFER TO SURVEY NO. 17-097.
2. SEE SHEET NO. 1 FOR SURVEY NOTES.



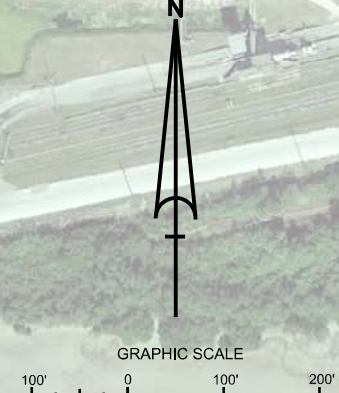
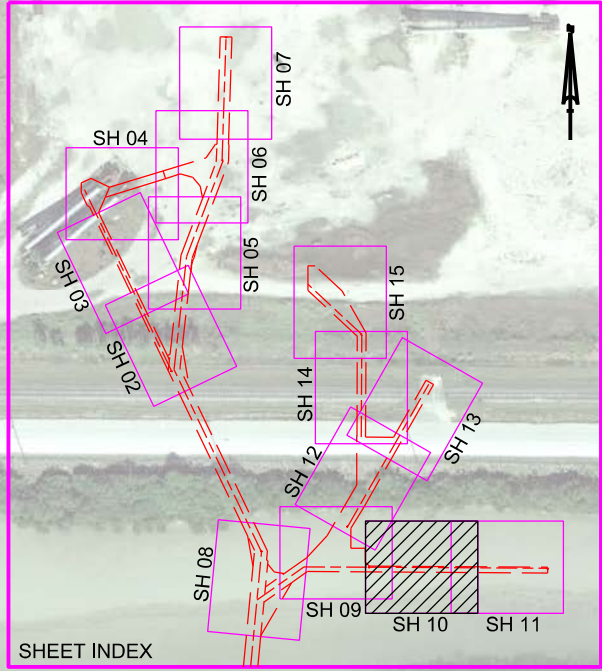
MATCHLINE SHEET NO. 09 STA. 3+00

MATCHLINE SHEET NO. 11 STA. 33+00

RGE. 200
RGE. 162.8
RGE. 00

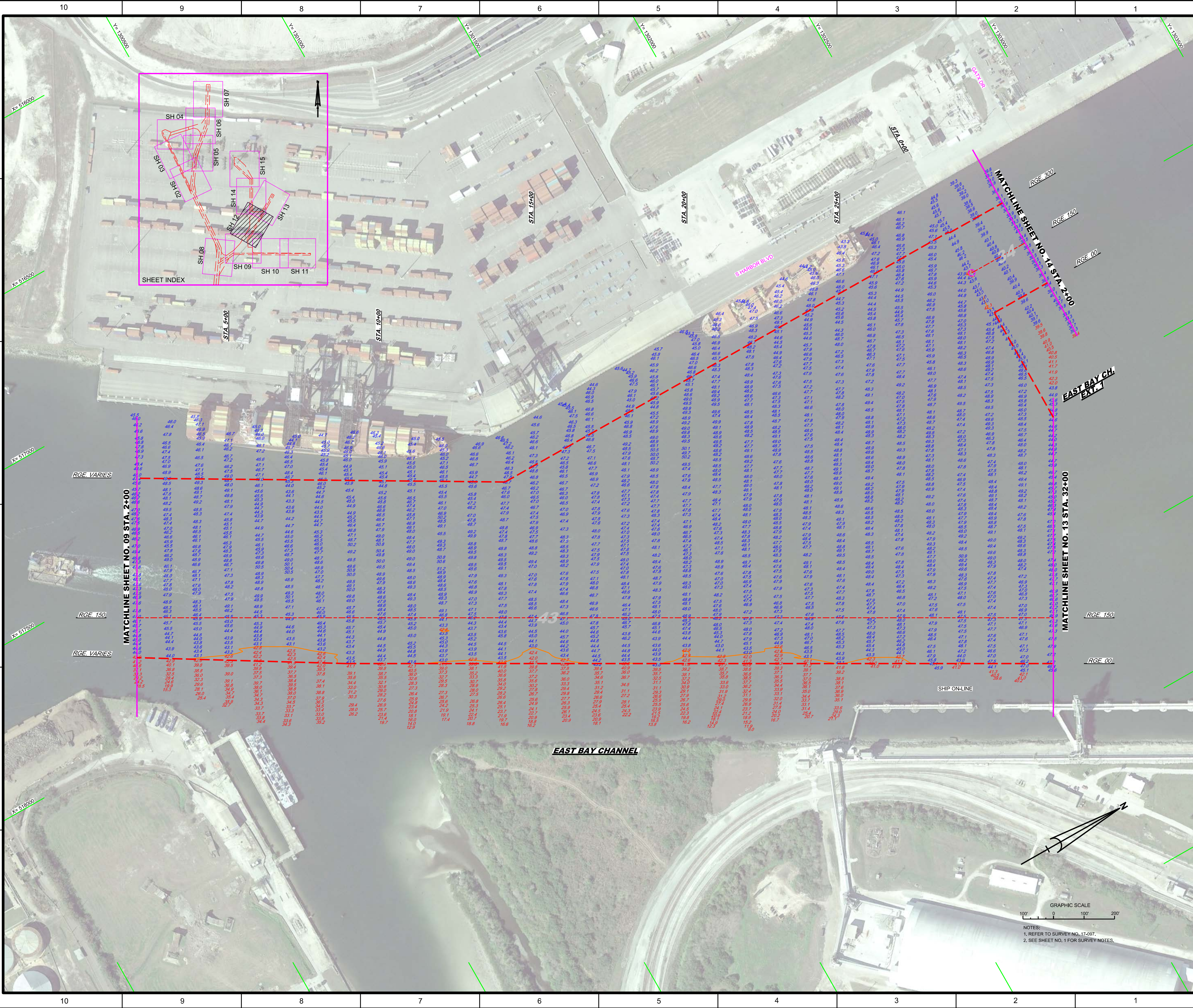
RGE. 200
RGE. 162.8
RGE. 00


PORT SUTTON TERMINAL CHANNEL



NOTES:
1. REFER TO SURVEY NO. 17-097.
2. SEE SHEET NO. 1 FOR SURVEY NOTES.



 US Army Corps of Engineers Jacksonville District SAFETY ON THIS JOB DEPENDS ON YOU
DEPARTMENT OF THE ARMY JACKSONVILLE DISTRICT, CORPS OF ENGINEERS JACKSONVILLE, FLORIDA
Drawn by: WRM Checked by: GHR Date: MAR 2017
Project: TAMPA HARBOR EXAM SURVEY FY17 Drawing: 12, 34 AND 43-FOOT PROJECT Title: PLAN Reference: 17-097-00-07.DGN
10 SHEET 10 OF 15





US Army Corps
of Engineers
Jacksonville District

**SAFETY ON THIS JOB
DEPENDS ON YOU**

Drawn by: 	Check by: 	Date: MAR 2017	
Project: HYDROGRAPHIC EXAM SURVEY FY17 12, 34 AND 43-FOOT PROJECT STA. 2+00 THRU STA. 32+00 EAST BAY CHANNEL AND STA. 0+00 THRU STA. 4+00 EAST BAY CHANNEL EXT. 1	Scale: AS SHOWN	Drawing no. 12	

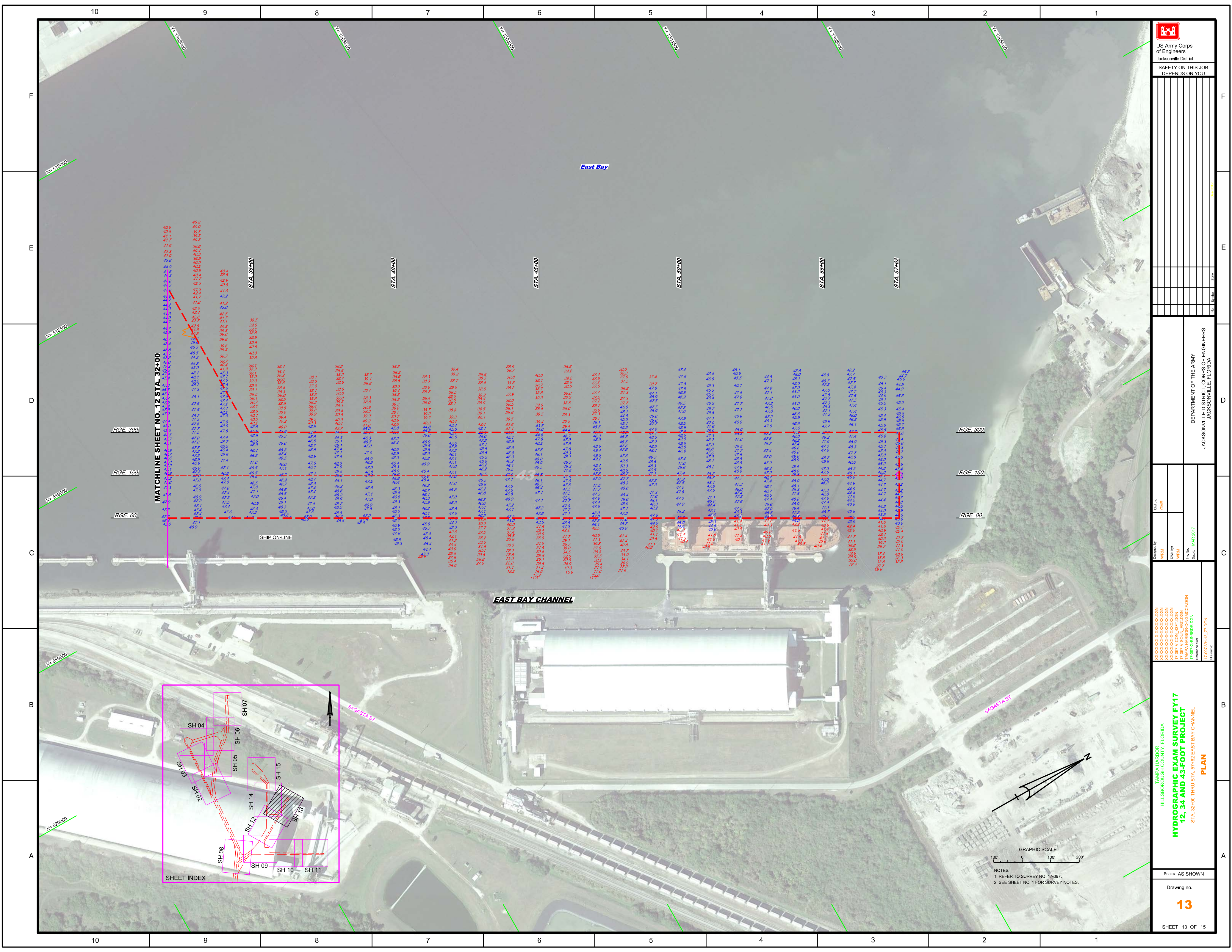
TAMPA HARBOR
HILLSBOROUGH COUNTY, FLORIDA

PLAN

Reference files:
 11-097-00-BS-BROK.DGN
 11-097-00-BS-12.DGN
 11-097-00-BS-13.DGN
 11-097-00-BS-14.DGN
 11-097-00-BS-15.DGN
 11-097-00-BS-16.DGN
 11-097-00-BS-17.DGN
 11-097-00-BS-18.DGN
 11-097-00-BS-19.DGN
 11-097-00-BS-20.DGN
 11-097-00-BS-21.DGN
 11-097-00-BS-22.DGN
 11-097-00-BS-23.DGN
 11-097-00-BS-24.DGN
 11-097-00-BS-25.DGN
 11-097-00-BS-26.DGN
 11-097-00-BS-27.DGN
 11-097-00-BS-28.DGN
 11-097-00-BS-29.DGN
 11-097-00-BS-30.DGN
 11-097-00-BS-31.DGN
 11-097-00-BS-32.DGN
 11-097-00-BS-33.DGN
 11-097-00-BS-34.DGN
 11-097-00-BS-35.DGN
 11-097-00-BS-36.DGN
 11-097-00-BS-37.DGN
 11-097-00-BS-38.DGN
 11-097-00-BS-39.DGN
 11-097-00-BS-40.DGN
 11-097-00-BS-41.DGN
 11-097-00-BS-42.DGN
 11-097-00-BS-43.DGN
 11-097-00-BS-44.DGN
 11-097-00-BS-45.DGN
 11-097-00-BS-46.DGN
 11-097-00-BS-47.DGN
 11-097-00-BS-48.DGN
 11-097-00-BS-49.DGN
 11-097-00-BS-50.DGN
 11-097-00-BS-51.DGN
 11-097-00-BS-52.DGN
 11-097-00-BS-53.DGN
 11-097-00-BS-54.DGN
 11-097-00-BS-55.DGN
 11-097-00-BS-56.DGN
 11-097-00-BS-57.DGN
 11-097-00-BS-58.DGN
 11-097-00-BS-59.DGN
 11-097-00-BS-60.DGN
 11-097-00-BS-61.DGN
 11-097-00-BS-62.DGN
 11-097-00-BS-63.DGN
 11-097-00-BS-64.DGN
 11-097-00-BS-65.DGN
 11-097-00-BS-66.DGN
 11-097-00-BS-67.DGN
 11-097-00-BS-68.DGN
 11-097-00-BS-69.DGN
 11-097-00-BS-70.DGN
 11-097-00-BS-71.DGN
 11-097-00-BS-72.DGN
 11-097-00-BS-73.DGN
 11-097-00-BS-74.DGN
 11-097-00-BS-75.DGN
 11-097-00-BS-76.DGN
 11-097-00-BS-77.DGN
 11-097-00-BS-78.DGN
 11-097-00-BS-79.DGN
 11-097-00-BS-80.DGN
 11-097-00-BS-81.DGN
 11-097-00-BS-82.DGN
 11-097-00-BS-83.DGN
 11-097-00-BS-84.DGN
 11-097-00-BS-85.DGN
 11-097-00-BS-86.DGN
 11-097-00-BS-87.DGN
 11-097-00-BS-88.DGN
 11-097-00-BS-89.DGN
 11-097-00-BS-90.DGN
 11-097-00-BS-91.DGN
 11-097-00-BS-92.DGN
 11-097-00-BS-93.DGN
 11-097-00-BS-94.DGN
 11-097-00-BS-95.DGN
 11-097-00-BS-96.DGN
 11-097-00-BS-97.DGN
 11-097-00-BS-98.DGN
 11-097-00-BS-99.DGN
 11-097-00-BS-100.DGN

GRAPHIC SCALE
0 100 200

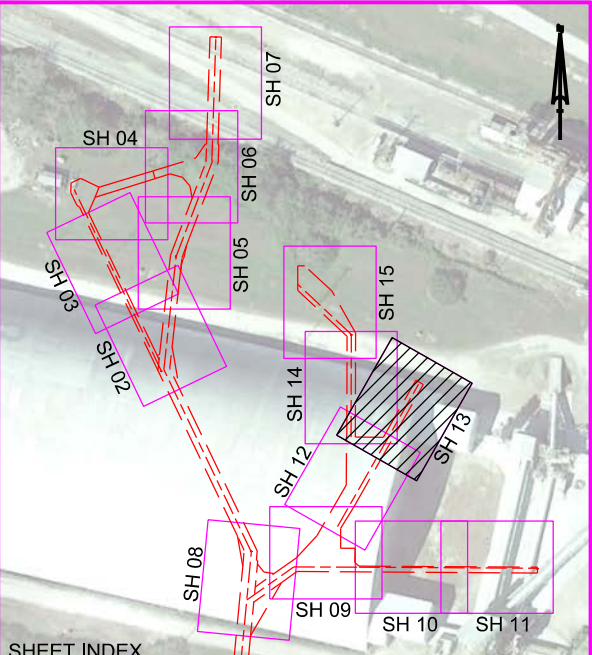
NOTES:
1. REFER TO SURVEY NO. 17-007.
2. SEE SHEET NO. 1 FOR SURVEY NOTES.



MATCHLINE SHEET NO. 12 STA. 32+00

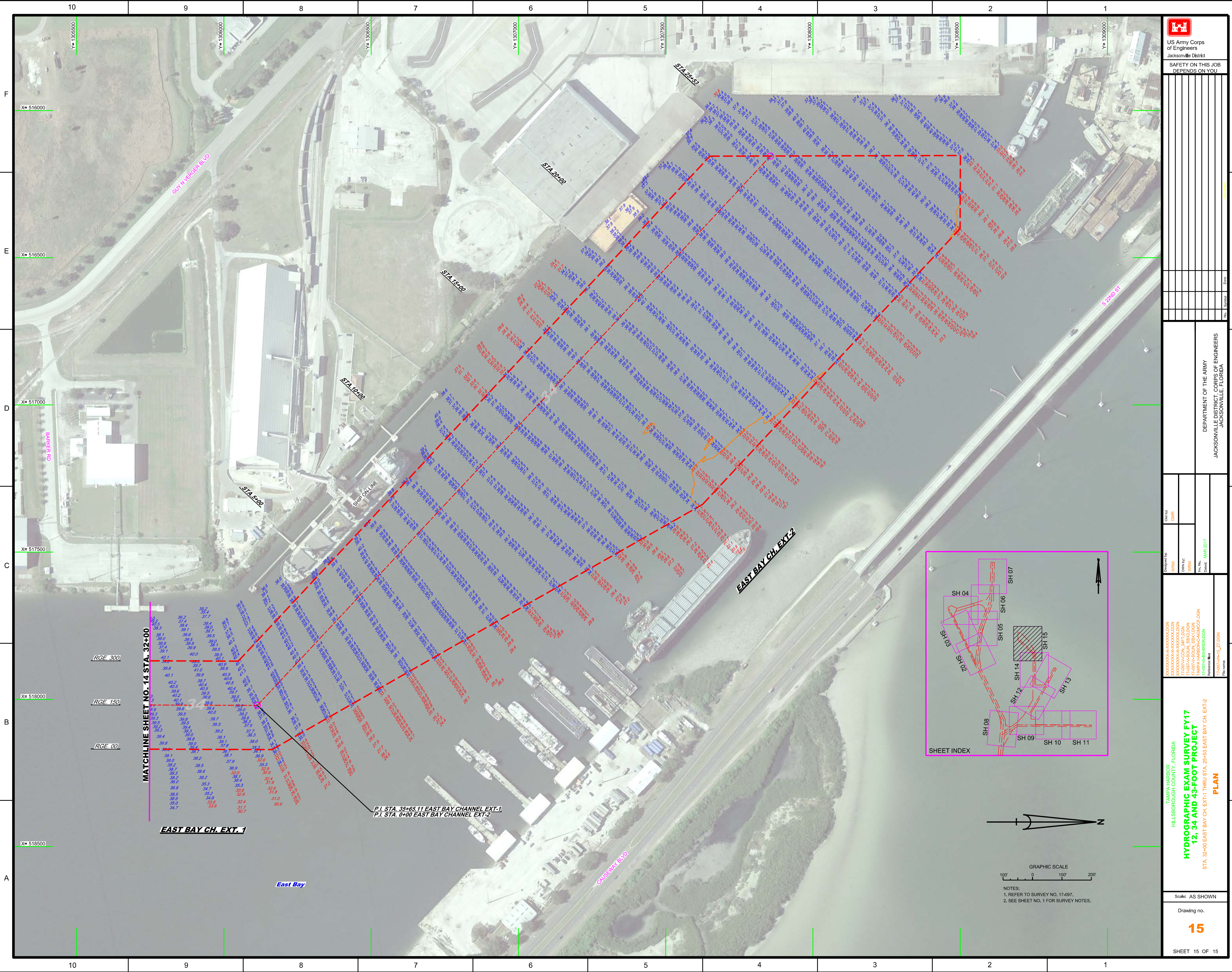
EAST BAY CHANNEL

SHEET INDEX



NOTES:
 1. REFER TO SURVEY NO. 174997.
 2. SEE SHEET NO. 1 FOR SURVEY NOTES.

US Army Corps of Engineers Jacksonville District SAFETY ON THIS JOB DEPENDS ON YOU	
DEPARTMENT OF THE ARMY JACKSONVILLE DISTRICT CORPS OF ENGINEERS JACKSONVILLE, FLORIDA	Drawn by: GHK Checked by: GHK Designated by: GHK Date: MAR 2017
TAMPA HARBOR HILLSBOROUGH COUNTY, FLORIDA HYDROGRAPHIC EXAM SURVEY FY17 12, 34 AND 43-FOOT PROJECT STA. 32+00 THRU STA. 57+02 EAST BAY CHANNEL PLAN	
Scale: AS SHOWN Drawing no. 13 SHEET 13 OF 15	



 US Army Corps of Engineers Jacksonville District SAFETY ON THIS JOB DEPENDS ON YOU	
Designated By: WRM	Check By: GHR
Designation: 17-097A-SOIL_EB02.DGN 17-097A-SOIL_EB03.DGN 17-097A-SOIL_EB04.DGN 17-097A-SOIL_EB05.DGN 17-097A-SOIL_EB06.DGN 17-097A-SOIL_EB07.DGN 17-097A-SOIL_EB08.DGN 17-097A-SOIL_EB09.DGN 17-097A-SOIL_EB10.DGN 17-097A-SOIL_EB11.DGN 17-097A-SOIL_EB12.DGN 17-097A-SOIL_EB13.DGN 17-097A-SOIL_EB14.DGN 17-097A-SOIL_EB15.DGN 17-097A-SOIL_EB16.DGN 17-097A-SOIL_EB17.DGN 17-097A-SOIL_EB18.DGN 17-097A-SOIL_EB19.DGN 17-097A-SOIL_EB20.DGN 17-097A-SOIL_EB21.DGN 17-097A-SOIL_EB22.DGN 17-097A-SOIL_EB23.DGN 17-097A-SOIL_EB24.DGN 17-097A-SOIL_EB25.DGN 17-097A-SOIL_EB26.DGN 17-097A-SOIL_EB27.DGN 17-097A-SOIL_EB28.DGN 17-097A-SOIL_EB29.DGN 17-097A-SOIL_EB30.DGN 17-097A-SOIL_EB31.DGN 17-097A-SOIL_EB32.DGN 17-097A-SOIL_EB33.DGN 17-097A-SOIL_EB34.DGN 17-097A-SOIL_EB35.DGN 17-097A-SOIL_EB36.DGN 17-097A-SOIL_EB37.DGN 17-097A-SOIL_EB38.DGN 17-097A-SOIL_EB39.DGN 17-097A-SOIL_EB40.DGN 17-097A-SOIL_EB41.DGN 17-097A-SOIL_EB42.DGN 17-097A-SOIL_EB43.DGN 17-097A-SOIL_EB44.DGN 17-097A-SOIL_EB45.DGN 17-097A-SOIL_EB46.DGN 17-097A-SOIL_EB47.DGN 17-097A-SOIL_EB48.DGN 17-097A-SOIL_EB49.DGN 17-097A-SOIL_EB50.DGN 17-097A-SOIL_EB51.DGN 17-097A-SOIL_EB52.DGN 17-097A-SOIL_EB53.DGN 17-097A-SOIL_EB54.DGN 17-097A-SOIL_EB55.DGN 17-097A-SOIL_EB56.DGN 17-097A-SOIL_EB57.DGN 17-097A-SOIL_EB58.DGN 17-097A-SOIL_EB59.DGN 17-097A-SOIL_EB60.DGN 17-097A-SOIL_EB61.DGN 17-097A-SOIL_EB62.DGN 17-097A-SOIL_EB63.DGN 17-097A-SOIL_EB64.DGN 17-097A-SOIL_EB65.DGN 17-097A-SOIL_EB66.DGN 17-097A-SOIL_EB67.DGN 17-097A-SOIL_EB68.DGN 17-097A-SOIL_EB69.DGN 17-097A-SOIL_EB70.DGN 17-097A-SOIL_EB71.DGN 17-097A-SOIL_EB72.DGN 17-097A-SOIL_EB73.DGN 17-097A-SOIL_EB74.DGN 17-097A-SOIL_EB75.DGN 17-097A-SOIL_EB76.DGN 17-097A-SOIL_EB77.DGN 17-097A-SOIL_EB78.DGN 17-097A-SOIL_EB79.DGN 17-097A-SOIL_EB80.DGN 17-097A-SOIL_EB81.DGN 17-097A-SOIL_EB82.DGN 17-097A-SOIL_EB83.DGN 17-097A-SOIL_EB84.DGN 17-097A-SOIL_EB85.DGN 17-097A-SOIL_EB86.DGN 17-097A-SOIL_EB87.DGN 17-097A-SOIL_EB88.DGN 17-097A-SOIL_EB89.DGN 17-097A-SOIL_EB90.DGN 17-097A-SOIL_EB91.DGN 17-097A-SOIL_EB92.DGN 17-097A-SOIL_EB93.DGN 17-097A-SOIL_EB94.DGN 17-097A-SOIL_EB95.DGN 17-097A-SOIL_EB96.DGN 17-097A-SOIL_EB97.DGN 17-097A-SOIL_EB98.DGN 17-097A-SOIL_EB99.DGN 17-097A-SOIL_EB100.DGN	Date: MAR 2017
TAMP A HARBOR HILLSBOROUGH COUNTY, FLORIDA HYDROGRAPHIC EXAM SURVEY FY17 12, 34 AND 43-FOOT PROJECT STA. 32+00 EAST BAY CH. EXT-1 THRU STA. 25+63 EAST BAY CH. EXT-2 PLAN	
Scale: AS SHOWN Drawing no. 15 SHEET 15 OF 15	

