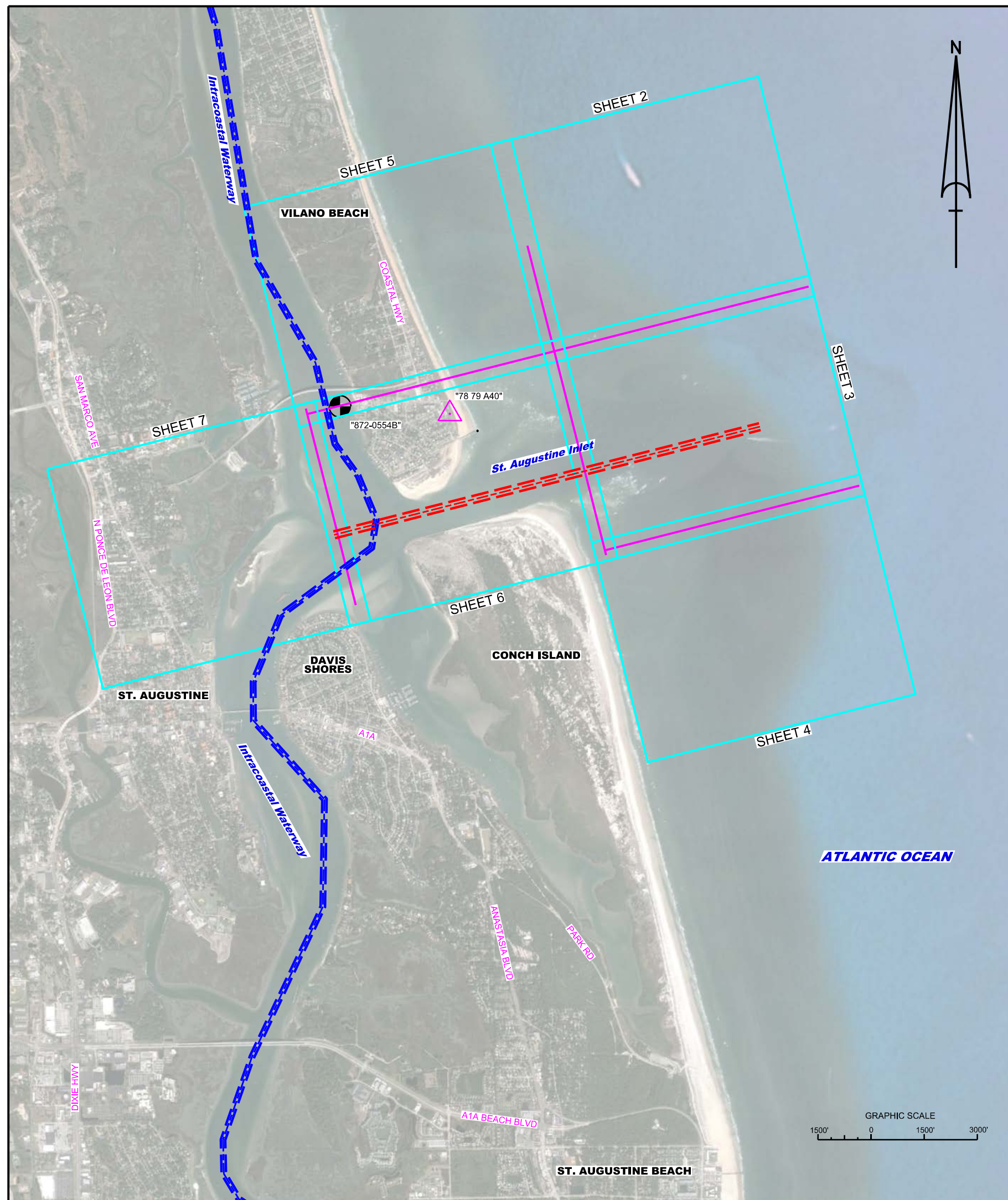
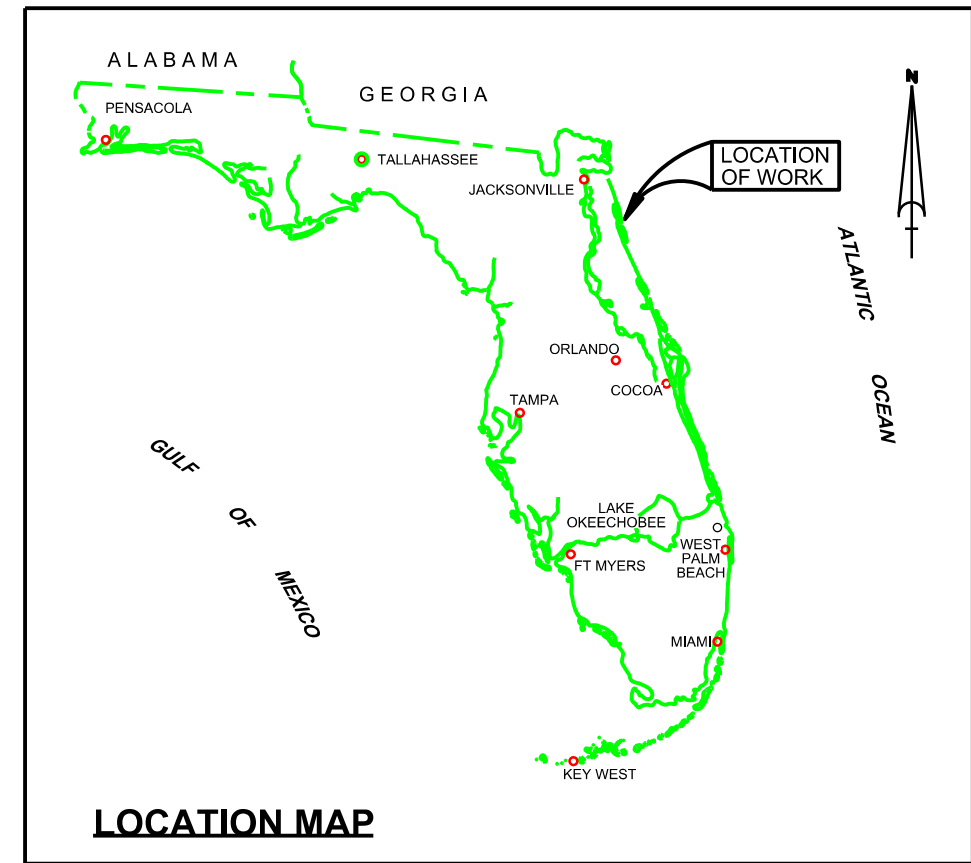


ST. AUGUSTINE INLET ST. JOHNS COUNTY, FLORIDA EBB AND FLOOD SHOALS EXAMINATION SURVEY FY17 16-FOOT PROJECT



SURVEY NOTES

1. REFER TO SURVEY NO. 17-072.
2. DEPTHS DEPICTED BY THIS SURVEY ARE REFERENCED TO MEAN LOWER LOW WATER (MLLW), TIDAL EPOCH 1983-2001, AS REPORTED BY THE NATIONAL OCEANIC AND ATMOSPHERIC ADMINISTRATION (NOAA). NOAA'S VDATUM MODEL WAS USED AND CALIBRATED TO THE PUBLISHED MLLW HEIGHTS OF THE BENCH MARKS ASSOCIATED WITH THE TIDE GAGE SITE SPECIFIED BELOW:

NOAA TIDAL STATION 872-0554, VILANO BEACH (ICWW) (PID: DL5712)
3. TIDAL REDUCTIONS WERE OBTAINED UTILIZING A REAL-TIME KINEMATIC (RTK) GPS AND REFERENCED TO MLLW UTILIZING A HYPACK KINEMATIC TIDE DATUM (KTD) MODEL PRODUCED USING NOAA VDATUM. KTD FILE NAME IS: CAMDENG-NASSAU-DUVAL-STJOHNS-FLAGLER_01FEB2011.KTD.
4. ALL ELEVATIONS ARE BELOW THE CHART DATUM UNLESS PRECEDED BY A (+) SIGN.
5. PLANE COORDINATES ARE BASED ON THE TRANSVERSE MERCATOR PROJECTION FOR THE EAST ZONE OF FLORIDA AND REFERENCED TO NORTH AMERICAN DATUM OF 1983 (NAD83).
6. ALL STATIONING REFERS TO THE CENTERLINE OF THE CHANNEL.
7. THIS SURVEY WAS PERFORMED USING REAL-TIME KINEMATIC (RTK) GPS POSITIONING WITH THE FOLLOWING REFERENCE BASE LOCATIONS:

REFERENCE BASE LOCATED AT "78 79 A40" (PID: BBBY64)

TIDE STAFF LOCATED AT "872 0554B" (PID: DL5712)
8. VERTICAL MEASUREMENTS WERE MADE USING A ROSS MODEL 835B SMART SOUNDER WITH A DUAL-FREQUENCY 28/200 KHZ SINGLE-BEAM TRANSDUCER. ALL DEPTHS SHOWN ARE IN HIGH FREQUENCY.

VESSEL	DATE OF SURVEY	CUT
SB-48	18-19, 23, 25 JAN 2017	EBB AND FLOOD SHOALS
SB-40	01 FEB 2017	FLOOD SHOAL
9. AIDS TO NAVIGATION WERE COLLECTED DURING THIS SURVEY.
10. THE INFORMATION DEPICTED ON THIS MAP REPRESENTS THE RESULTS OF SURVEYS MADE ON THE DATES INDICATED ABOVE AND CAN ONLY BE CONSIDERED AS INDICATING THE GENERAL CONDITIONS AT THAT TIME. THIS CHART IS SOLELY FOR THE DISTRIBUTION OF AVAILABLE DEPTHS AT THE TIME OF THE SURVEY.
11. SURVEY ACCURACY PERFORMANCE STANDARDS, QUALITY CONTROL, AND QUALITY ASSURANCE REQUIREMENTS WERE FOLLOWED DURING THIS SURVEY IN ACCORDANCE WITH USACE EM 1110-2-1003, HYDROGRAPHIC SURVEYING, 30 NOV 13.

LEGEND	
	MONUMENT
	LIGHTED BEACON
	GREEN DAYBEACON
	RED DAYBEACON
	RED LIGHTED BUOY
	GREEN LIGHTED BUOY
	CAN BUOY
	NUN BUOY
	TIDE STAFF
	PROJECT DEPTH

US Army Corps of Engineers
Jacksonville District
SAFETY ON THIS JOB
DEPENDS ON YOU

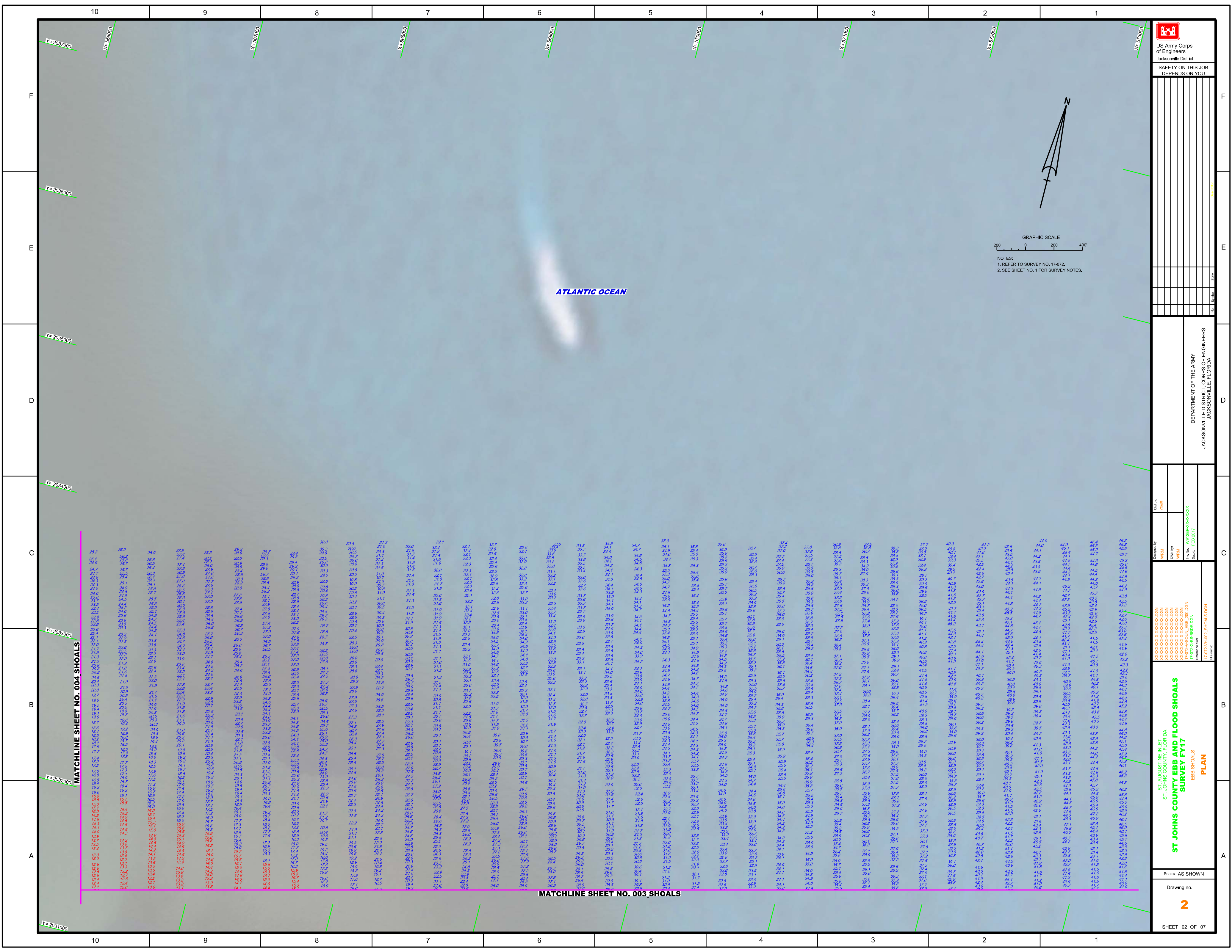
ST. AUGUSTINE INLET
ST. JOHNS COUNTY, FLORIDA
**ST. JOHNS COUNTY EBB AND FLOOD SHOALS
SURVEY FY17**
INDEX, LOCATION AND VICINITY
MAP

DEPARTMENT OF THE ARMY
JACKSONVILLE DISTRICT, CORPS OF ENGINEERS
JACKSONVILLE, FLORIDA

Scale: AS SHOWN

Drawing no.
1

SHEET 01 OF 07



SAFETY ON THIS JOB DEPENDS ON YOU



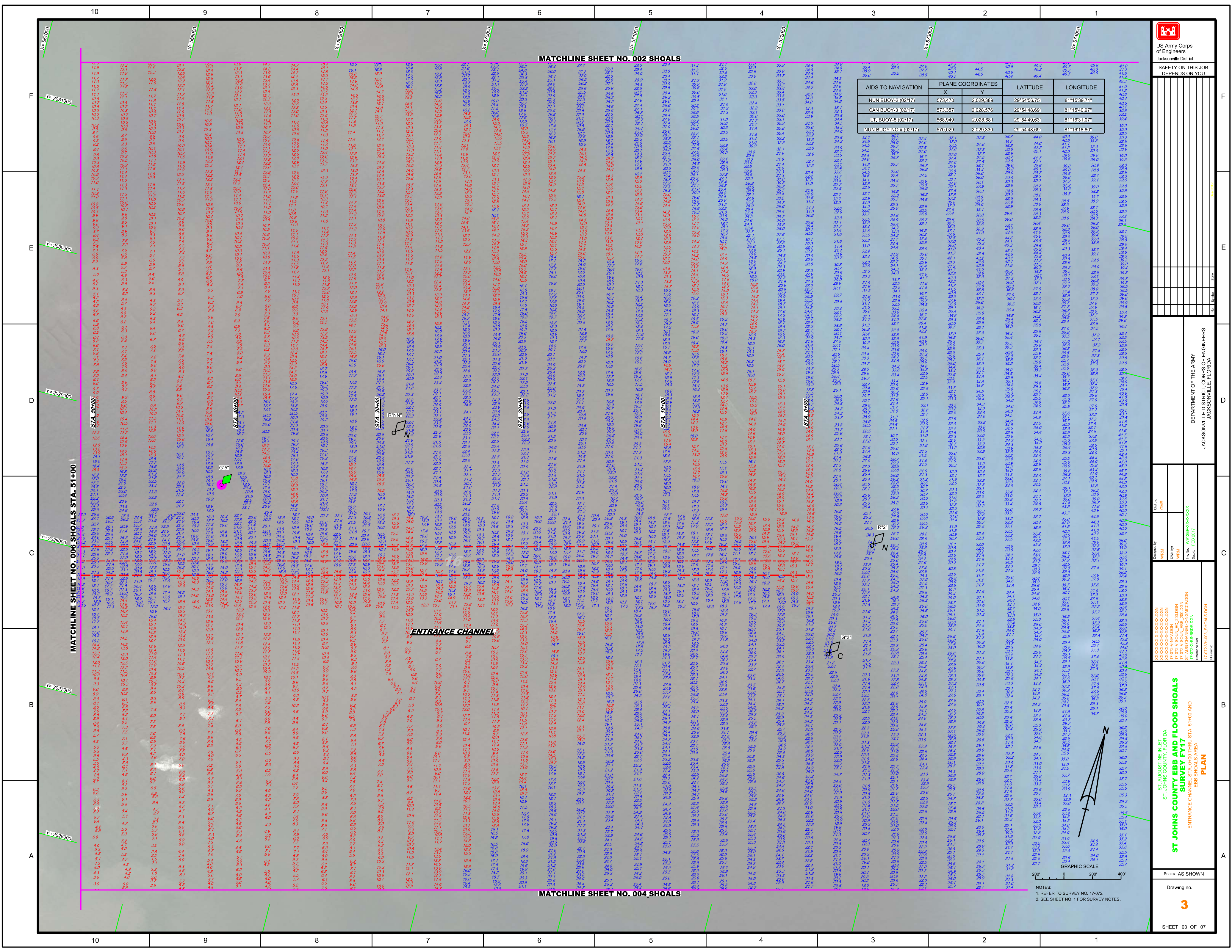
NOTES:
1. REFER TO SURVEY NO. 17-072.
2. SEE SHEET NO. 1 FOR SURVEY NOTES.

Table with columns for 'Date', 'Scale', 'Sheet No.', 'Drawing No.', and 'Revision'. The table contains several rows of data, including '17-072-03-001' and '17-072-03-002'.

DEPARTMENT OF THE ARMY
JACKSONVILLE DISTRICT, CORPS OF ENGINEERS
JACKSONVILLE, FLORIDA

ST AUGUSTINE INLET
ST. JOHNS COUNTY, FLORIDA
EBB SHOALS
SURVEY FY17
PLAN

Scale: AS SHOWN
Drawing no. 2
SHEET 02 OF 07



MATCHLINE SHEET NO. 002 SHOALS

AIDS TO NAVIGATION	PLANE COORDINATES		LATITUDE	LONGITUDE
	X	Y		
NUN BUOY-2 (02/17)	573.470	2,028.389	29°54'56.75"	81°15'39.71"
CAN BUOY-3 (02/17)	573.357	2,028.576	29°54'48.69"	81°15'40.97"
LTN BUOY-5 (02/17)	568.949	2,028.681	29°54'49.63"	81°16'31.07"
NUN BUOY-NO. 01 (02/17)	570.029	2,029.330	29°54'48.69"	81°16'18.80"

MATCHLINE SHEET NO. 006 SHOALS STA. 51+00

MATCHLINE SHEET NO. 004 SHOALS

US Army Corps of Engineers
Jacksonville District

SAFETY ON THIS JOB
DEPENDS ON YOU

DEPARTMENT OF THE ARMY
JACKSONVILLE DISTRICT, CORPS OF ENGINEERS
JACKSONVILLE, FLORIDA

ST. AUGUSTINE INLET
ST. JOHNS COUNTY, FLORIDA
ST. JOHNS COUNTY EBB AND FLOOD SHOALS
SURVEY FY17
ENTRANCE CHANNEL STA. 0+00 THRU STA. 51+00 AND
EBB SHOALS AREA
PLAN

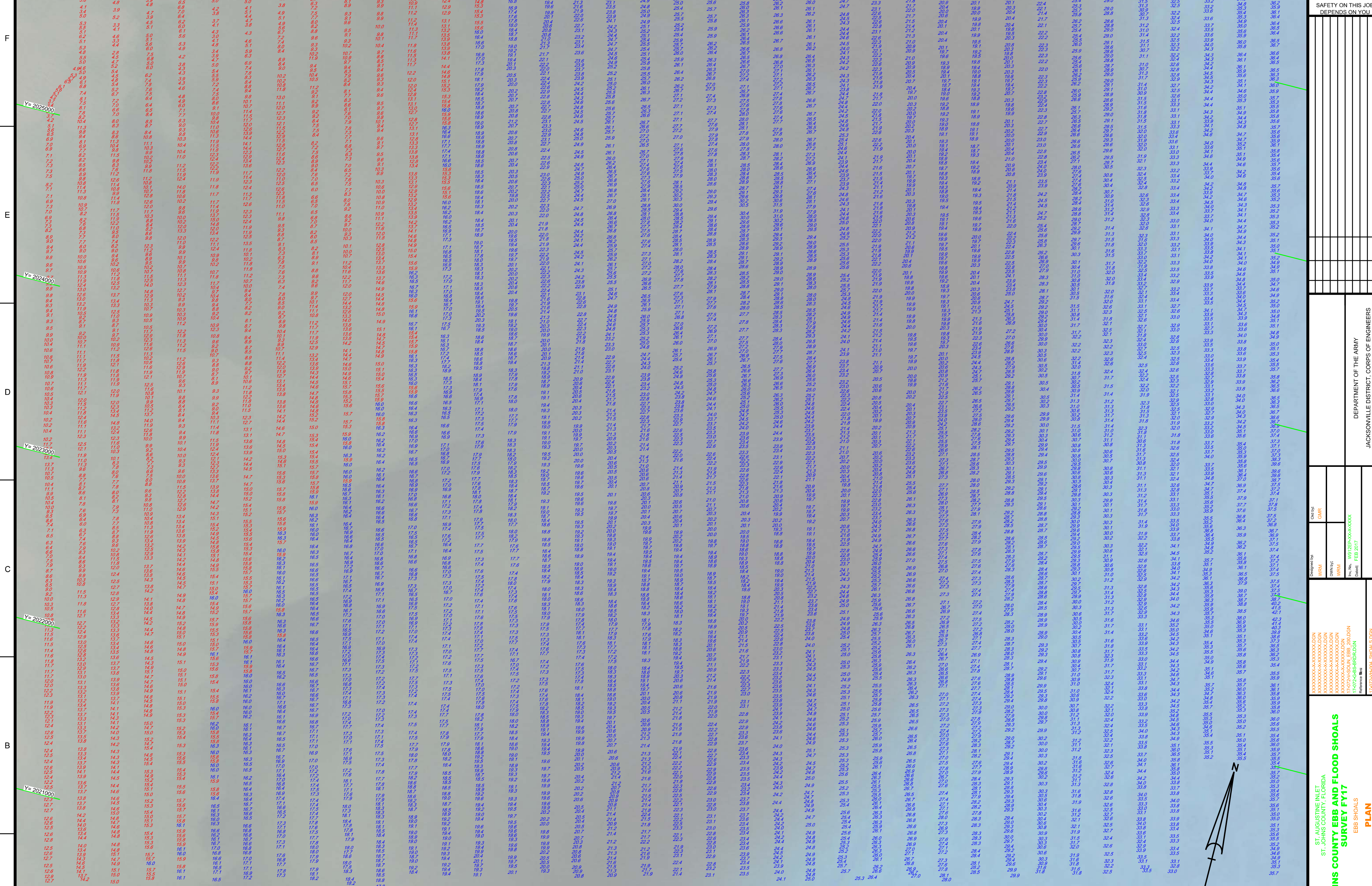
Scale: AS SHOWN

3

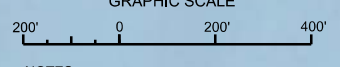
SHEET 03 OF 07

NOTES:
1. REFER TO SURVEY NO. 17-072.
2. SEE SHEET NO. 1 FOR SURVEY NOTES.

MATCHLINE SHEET NO. 003 SHOALS



ATLANTIC OCEAN



NOTES: 1. REFER TO SURVEY NO. 17-02. 2. SEE SHEET NO. 1 FOR SURVEY NOTES.



SAFETY ON THIS JOB DEPENDS ON YOU

Vertical grid of numerical data on the right side of the sheet, organized in columns.

JACKSONVILLE DISTRICT, CORPS OF ENGINEERS JACKSONVILLE, FLORIDA

DEPARTMENT OF THE ARMY

ST AUGUSTINE INLET, ST. JOHNS COUNTY, FLORIDA

ST. JOHNS COUNTY EBB AND FLOOD SHOALS SURVEY FY17 EBB SHOALS PLAN

Scale: AS SHOWN



ATLANTIC OCEAN

MATCHLINE SHEET NO. 006 SHOALS

MATCHLINE SHEET NO. 002 SHOALS

GRAPHIC SCALE
0 200' 400'
NOTES:
1. REFER TO SURVEY NO. 17-072.
2. SEE SHEET NO. 1 FOR SURVEY NOTES.

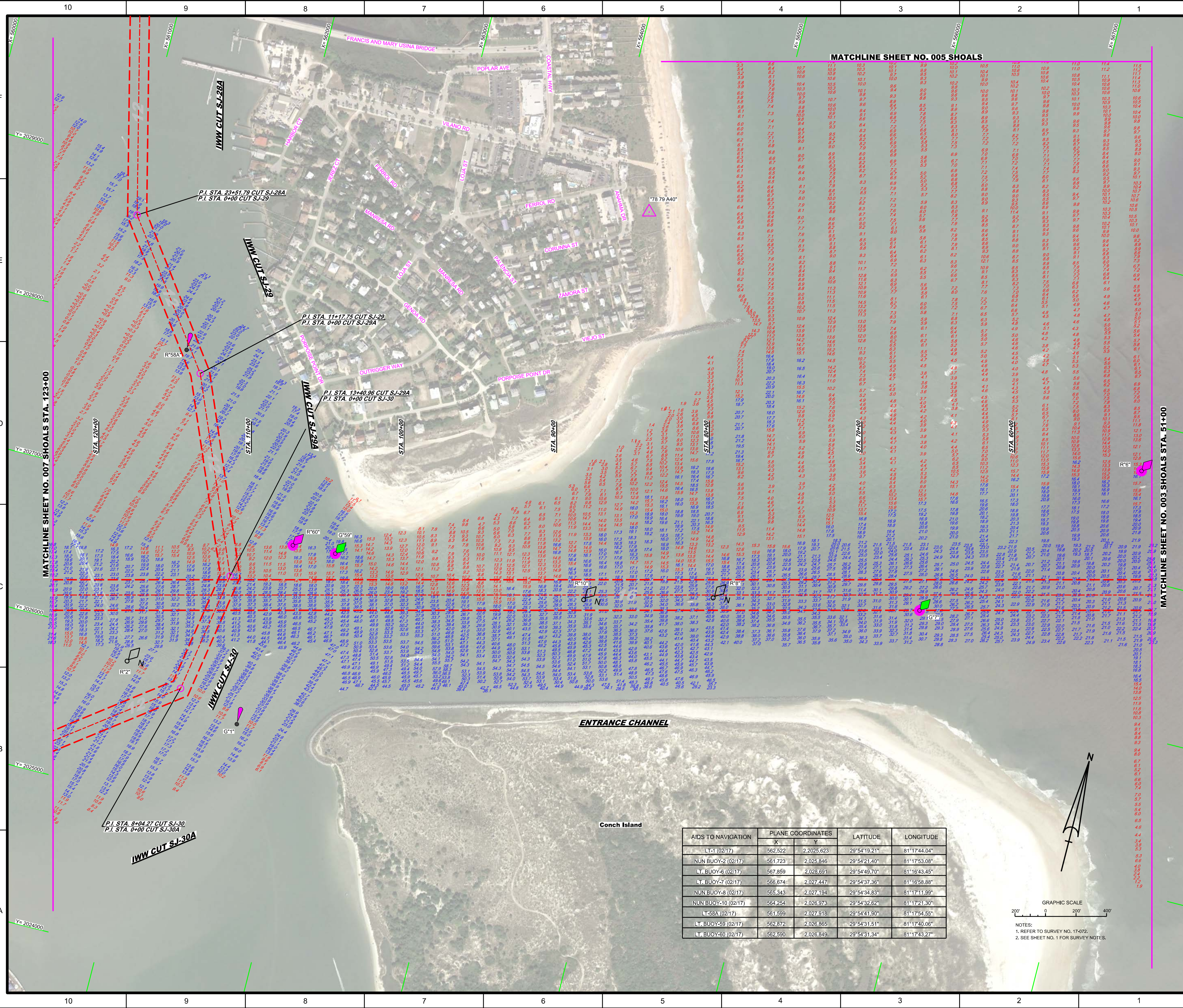
US Army Corps of Engineers
Jacksonville District
**SAFETY ON THIS JOB
DEPENDS ON YOU**

DEPARTMENT OF THE ARMY
JACKSONVILLE DISTRICT, CORPS OF ENGINEERS
JACKSONVILLE, FLORIDA

ST. AUGUSTINE INLET
ST. JOHNS COUNTY, FLORIDA
**ST JOHNS COUNTY EBB AND FLOOD SHOALS
SURVEY FY17**
EBB SHOALS
PLAN

Scale: AS SHOWN
Drawing no. **5**
SHEET 05 OF 07

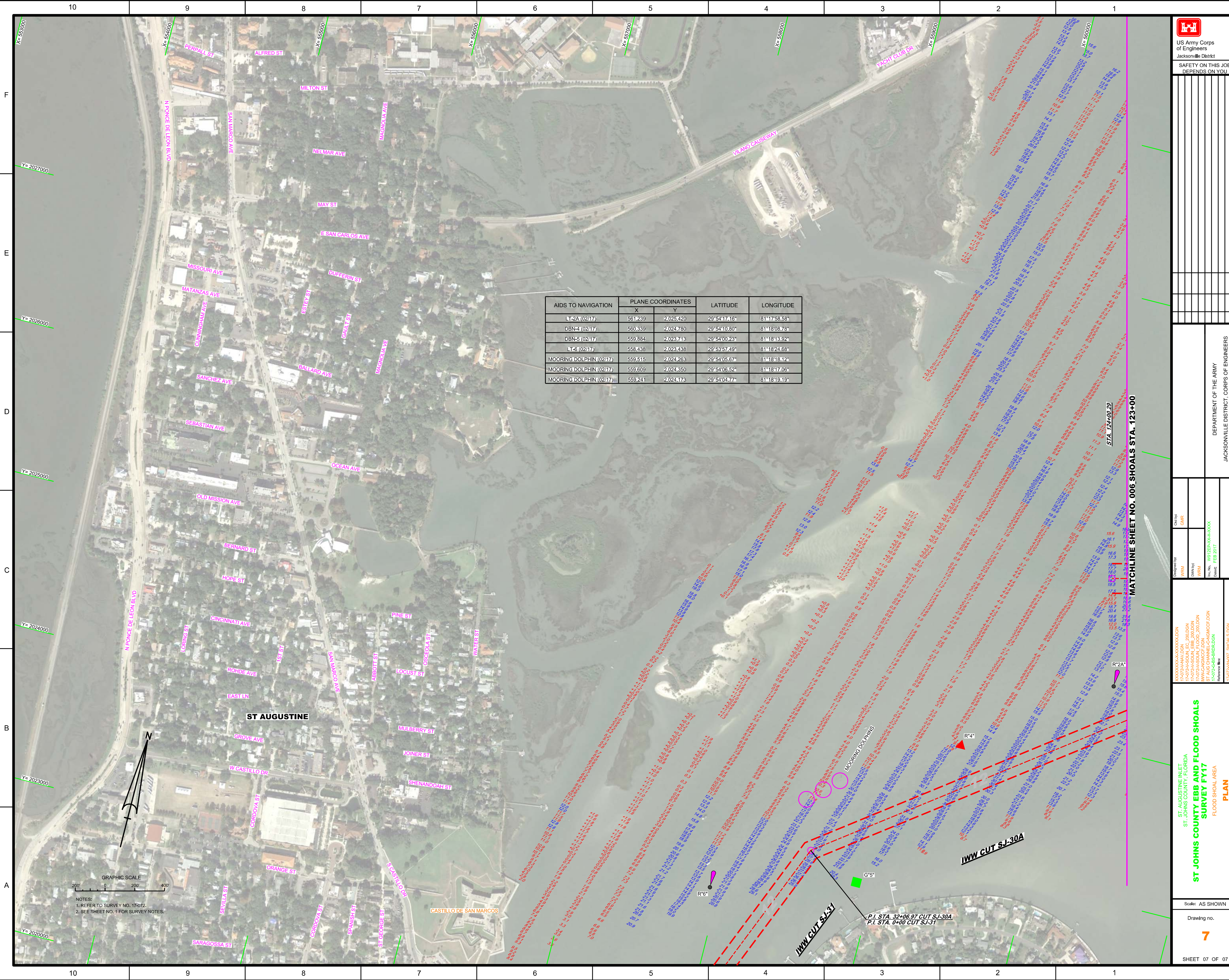
Designed By: WRM
Checked By: GHR
Drawn By: WRM
Scale: AS SHOWN
Date: FEB 2017
Reference: 17-072-SS-001.DGN
17-072-SS-002.DGN
17-072-SS-003.DGN
17-072-SS-004.DGN
17-072-SS-005.DGN
17-072-SS-006.DGN
17-072-SS-007.DGN
17-072-SS-008.DGN
17-072-SS-009.DGN
17-072-SS-010.DGN
17-072-SS-011.DGN
17-072-SS-012.DGN
17-072-SS-013.DGN
17-072-SS-014.DGN
17-072-SS-015.DGN
17-072-SS-016.DGN
17-072-SS-017.DGN
17-072-SS-018.DGN
17-072-SS-019.DGN
17-072-SS-020.DGN




AIDS TO NAVIGATION	PLANE COORDINATES		LATITUDE	LONGITUDE
	X	Y		
LT-1 (02/17)	562.522	2,2025.623	29°54'19.21"	81°17'44.04"
NUN BUOY-2 (02/17)	561.723	2,026.846	29°54'21.40"	81°17'53.08"
LT BUOY-6 (02/17)	567.859	2,028.691	29°54'49.70"	81°16'43.45"
LT BUOY-7 (02/17)	566.674	2,027.447	29°54'37.36"	81°16'58.88"
NUN BUOY-8 (02/17)	565.343	2,027.134	29°54'34.83"	81°17'11.99"
NUN BUOY-10 (02/17)	564.254	2,026.973	29°54'32.62"	81°17'21.30"
LT-58A (02/17)	561.599	2,027.918	29°54'41.90"	81°17'54.55"
LT BUOY-59 (02/17)	562.872	2,026.865	29°54'31.51"	81°17'40.06"
LT BUOY-60 (02/17)	562.590	2,026.849	29°54'31.34"	81°17'43.27"

GRAPHIC SCALE
200' 0 200' 400'

NOTES:
1. REFER TO SURVEY NO. 17-072.
2. SEE SHEET NO. 1 FOR SURVEY NOTES.



AIDS TO NAVIGATION	PLANE COORDINATES		LATITUDE	LONGITUDE
	X	Y		
LT-2A (02/17)	561,239	2,025,420	29°54'17.16"	81°17'58.58"
DBN-4 (02/17)	560,839	2,024,780	29°54'10.80"	81°18'08.78"
DBN-5 (02/17)	559,884	2,023,743	29°54'00.23"	81°18'13.92"
LT-6 (02/17)	558,438	2,023,438	29°53'57.49"	81°18'24.68"
MOORING DOLPHIN (02/17)	559,515	2,024,263	29°54'05.67"	81°18'18.12"
MOORING DOLPHIN (02/17)	559,609	2,024,350	29°54'06.52"	81°18'17.06"
MOORING DOLPHIN (02/17)	559,241	2,024,173	29°54'04.77"	81°18'19.19"



US Army Corps of Engineers
Jacksonville District

SAFETY ON THIS JOB
DEPENDS ON YOU

DEPARTMENT OF THE ARMY
JACKSONVILLE DISTRICT, CORPS OF ENGINEERS
JACKSONVILLE, FLORIDA

ST AUGUSTINE INLET
ST. JOHNS COUNTY, FLORIDA
**ST JOHNS COUNTY EBB AND FLOOD SHOALS
SURVEY FY17**
FLOOD SHOAL AREA
PLAN

Scale: AS SHOWN

Drawing no.
7

SHEET 07 OF 07