

ALAFIA RIVER (TAMPA HARBOR ZONE 8) HILLSBOROUGH COUNTY, FLORIDA HYDROGRAPHIC EXAM SURVEY FY17 33 AND 34-FOOT PROJECT

SURVEY NOTES

- REFER TO SURVEY NO. 17-063.
- DEPTHS DEPICTED BY THIS SURVEY ARE REFERENCED TO MEAN LOWER LOW WATER (MLLW), TIDAL EPOCH 1983-2001 AS REPORTED BY THE NATIONAL OCEANIC AND ATMOSPHERIC ADMINISTRATION (NOAA). NOAA'S VDATUM MODEL WAS USED AND CALIBRATED TO THE PUBLISHED MLLW HEIGHTS OF THE BENCH MARKS ASSOCIATED WITH THE TIDE GAGE SITE SPECIFIED BELOW:

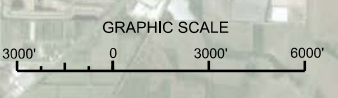
NOAA TIDAL STATION 872-8657, DAVIS ISLAND, HILLSBOROUGH BAY FOR ALL CUTS (PID: AG6024)
- TIDAL REDUCTIONS WERE OBTAINED UTILIZING A REAL-TIME KINEMATIC (RTK) GPS AND REFERENCED TO MLLW UTILIZING A HYPPACK KINEMATIC TIDE DATUM (KTD) MODEL NAMED "SPC-FL-WEST-2010-12-07.KTD"
- ALL ELEVATIONS ARE BELOW THE CHART DATUM UNLESS PRECEDED BY A (+) SIGN.
- PLANE COORDINATES ARE BASED ON THE TRANSVERSE MERCATOR PROJECTION FOR THE WEST ZONE OF FLORIDA AND REFERENCED TO NORTH AMERICAN DATUM OF 1983 (NAD83).
- ALL STATIONING REFERS TO THE CENTERLINE OF THE CHANNEL.
- THIS SURVEY WAS PERFORMED USING REAL-TIME KINEMATIC (RTK) GPS POSITIONING WITH THE FOLLOWING REFERENCE BASE LOCATIONS:

REFERENCE BASE LOCATED AT "Q-261" (NGS PID: AG6024)

TIDE STAFF LOCATED FROM "Q-261" (NGS PID: AG6024)
- VERTICAL MEASUREMENTS WERE MADE USING A ROSS MODEL 835 SMARTSOUNDER WITH A DUAL-FREQUENCY (28/200 KHZ) SINGLE-BEAM TRANSDUCER. SOUNDINGS SHOWN ARE IN LOW FREQUENCY.
- VESSEL** SB-44 **DATE OF SURVEY** 16-17 FEB 2017 **CUT** E.C. AND TURNING BASIN
- AIDS TO NAVIGATION WERE LOCATED DURING THIS SURVEY.
- THE INFORMATION DEPICTED ON THIS MAP REPRESENTS THE RESULTS OF SURVEYS MADE ON THE DATES INDICATED ABOVE AND CAN ONLY BE CONSIDERED AS INDICATING THE GENERAL CONDITIONS AT THAT TIME. THIS CHART IS SOLELY FOR THE DISTRIBUTION OF AVAILABLE DEPTHS AT THE TIME OF THE SURVEY.
- SURVEY ACCURACY PERFORMANCE STANDARDS, QUALITY CONTROL, AND QUALITY ASSURANCE REQUIREMENTS WERE FOLLOWED DURING THIS SURVEY IN ACCORDANCE WITH USACE EM 1110-2-1003, HYDROGRAPHIC SURVEYING, 30 NOV 13.

SURVEY ZONE	CUTS
8	ALAFIA RIVER ENTRANCE CHANNEL

LEGEND	
	MONUMENT
	LIGHTED BEACON
	GREEN DAYBEACON
	RED DAYBEACON
	RED LIGHTED BUOY
	GREEN LIGHTED BUOY
	CAN BUOY
	NUN BUOY
	TIDE STAFF
	PROJECT DEPTH



SHEET INDEX

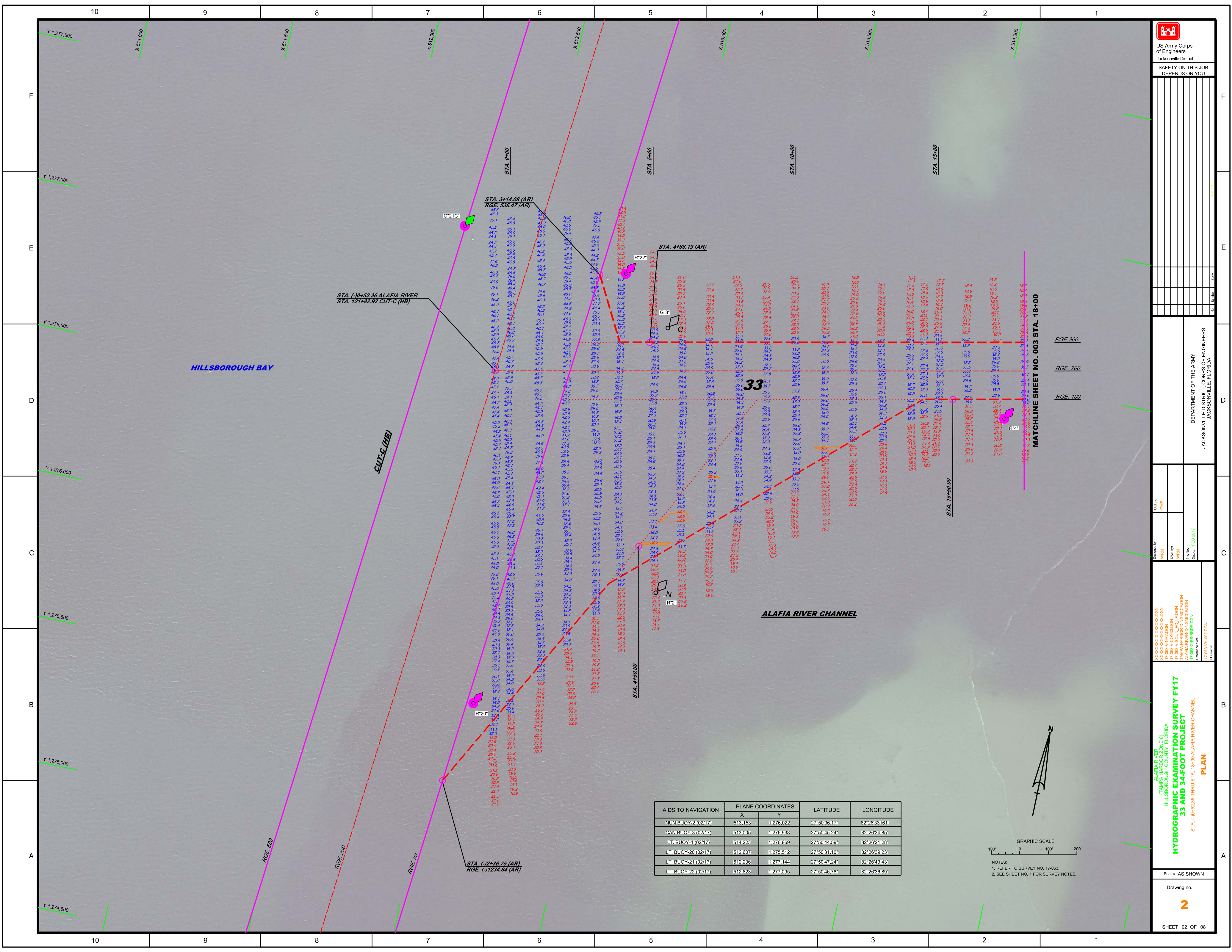
US Army Corps of Engineers
Jacksonville District
SAFETY ON THIS JOB DEPENDS ON YOU

DEPARTMENT OF THE ARMY
JACKSONVILLE DISTRICT, CORPS OF ENGINEERS
JACKSONVILLE, FLORIDA

Check By: GHR
Designed By: WRM
Drawn By: WRM
File Name: 17-063-33-34-FOOT-PROJECT-INDEX-LOC-AND-VICINITY-MAP
Date: FEB 2017

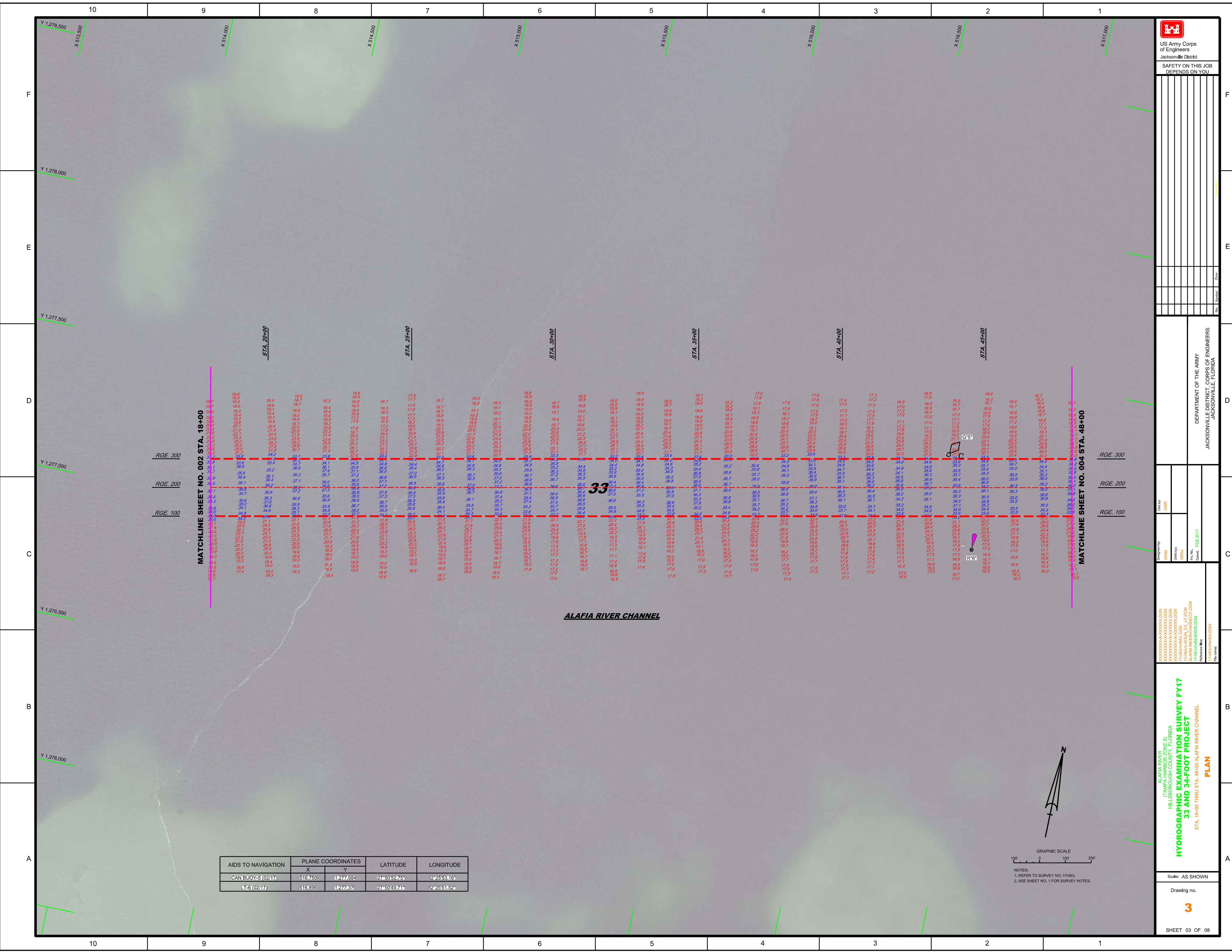
ALAFIA RIVER (TAMPA HARBOR ZONE 8) HILLSBOROUGH COUNTY, FLORIDA
HYDROGRAPHIC EXAMINATION SURVEY FY17 33 AND 34-FOOT PROJECT
INDEX, LOCATION AND VICINITY MAP

Scale: AS SHOWN
Drawing no. **1**
SHEET 01 OF 08



AIDS TO NAVIGATION	PLANE COORDINATES		LATITUDE	LONGITUDE
	X	Y		
NUN BUOY-2 (0217)	513,153	1,276,022	27°50'36.17"	82°26'33.161"
CAN BUOY-3 (0217)	513,005	1,276,938	27°50'45.24"	82°26'34.85"
LT BUOY-20 (0217)	514,223	1,276,869	27°50'44.59"	82°26'21.28"
LT BUOY-21 (0217)	512,807	1,275,512	27°50'31.10"	82°26'39.23"
LT BUOY-22 (0217)	512,236	1,277,144	27°50'47.24"	82°26'43.43"
LT BUOY-23 (0217)	512,823	1,277,095	27°50'46.78"	82°26'36.89"

NOTES:
1. REFER TO SURVEY NO. 17-083.
2. SEE SHEET NO. 1 FOR SURVEY NOTES.



US Army Corps
of Engineers
Jacksonville District
SAFETY ON THIS JOB
DEPENDS ON YOU

DEPARTMENT OF THE ARMY
JACKSONVILLE DISTRICT, CORPS OF ENGINEERS
JACKSONVILLE, FLORIDA

MATCHLINE SHEET NO. 002 STA. 18+00

MATCHLINE SHEET NO. 004 STA. 48+00

ALAFIA RIVER CHANNEL

AIDS TO NAVIGATION	PLANE COORDINATES		LATITUDE	LONGITUDE
	X	Y		
CAN BUOY-5 (02117)	516.750	1,277,884	27°50'52.75"	82°25'53.16"
LT-6 (02117)	516.896	1,277,876	27°50'49.71"	82°25'51.52"

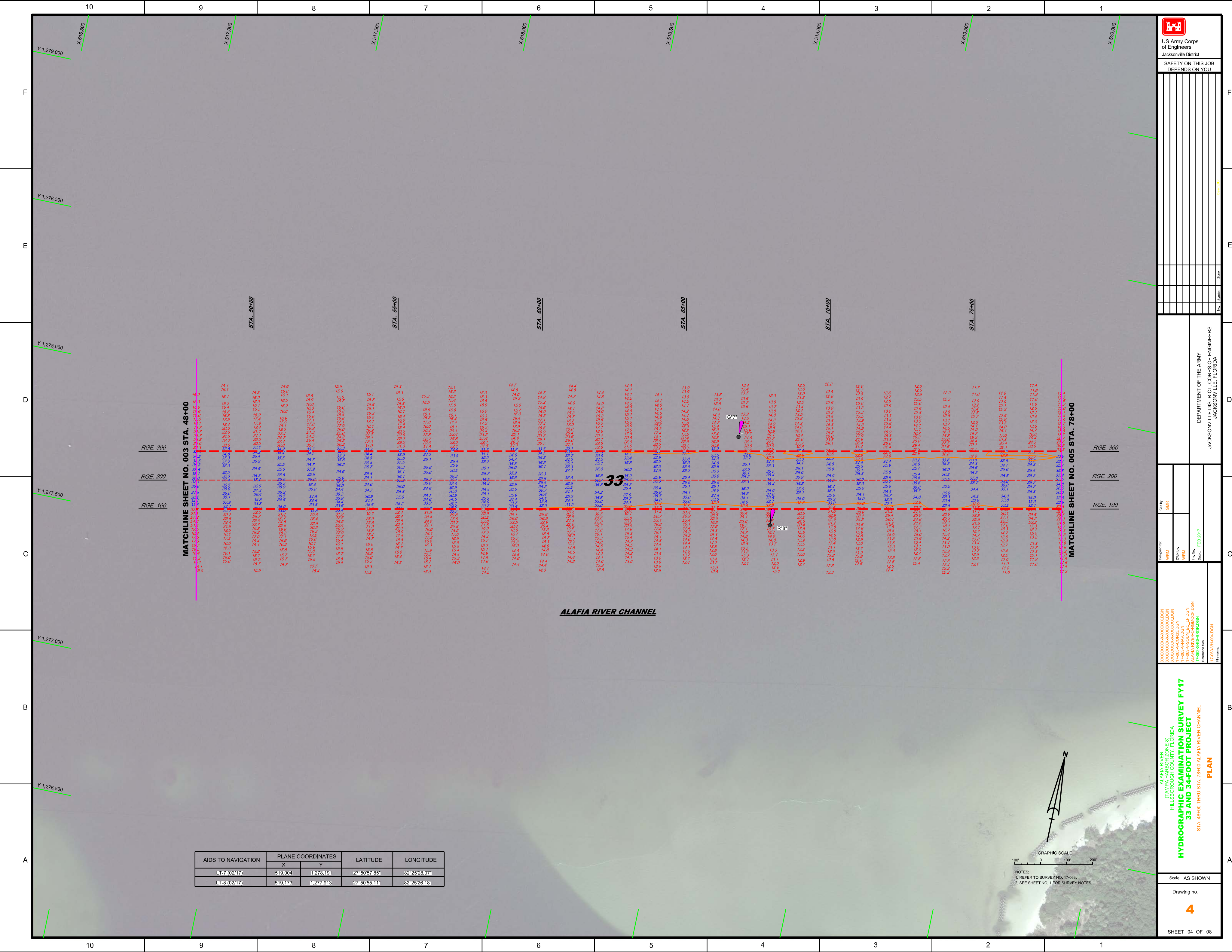
GRAPHIC SCALE
100' 0 100' 200'

NOTES:
1. REFER TO SURVEY NO. 17-063.
2. SEE SHEET NO. 1 FOR SURVEY NOTES.

Created by: GHR
Checked by: GHR
Designed by: GHR
Drawn by: GHR
Reviewed by: GHR
Date: FEB 2017

ALAFIA RIVER
(TALEGA HARBOUR ZONE @)
HILLSBOROUGH COUNTY, FLORIDA
**HYDROGRAPHIC EXAMINATION SURVEY FY17
33 AND 34-FOOT PROJECT**
STA. 19+00 THRU STA. 48+00 ALAFIA RIVER CHANNEL
Reference: MDT
File name: 17-063-HP-001.DGN
PLAN

Scale: AS SHOWN
Drawing no. **3**
SHEET 03 OF 08




MATCHLINE SHEET NO. 003 STA. 48+00

MATCHLINE SHEET NO. 005 STA. 78+00

AIDS TO NAVIGATION	PLANE COORDINATES		LATITUDE	LONGITUDE
	X	Y		
LT-1 (0217)	519,004	11278,191	27°50'57.85"	82°25'28.07"
LT-3 (0217)	519,173	11277,913	27°50'55.11"	82°25'26.18"

GRAPHIC SCALE
0 100 200
NOTES:
1. REFER TO SURVEY NO. 17-063,
2. SEE SHEET NO. 1 FOR SURVEY NOTES.

AIDS TO NAVIGATION	PLANE COORDINATES		LATITUDE	LONGITUDE
	X	Y		
DBN-11 (0217)	523,973	1,279,252	27°51'08.52"	82°24'32.75"
LT-12 (0217)	524,092	1,278,914	27°51'05.18"	82°24'31.42"
SIGN (0217)	523,815	1,279,295	27°51'08.95"	82°24'34.52"
SIGN (0217)	523,827	1,278,718	27°51'03.23"	82°24'34.36"



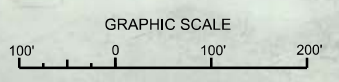
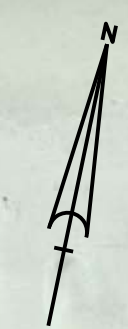
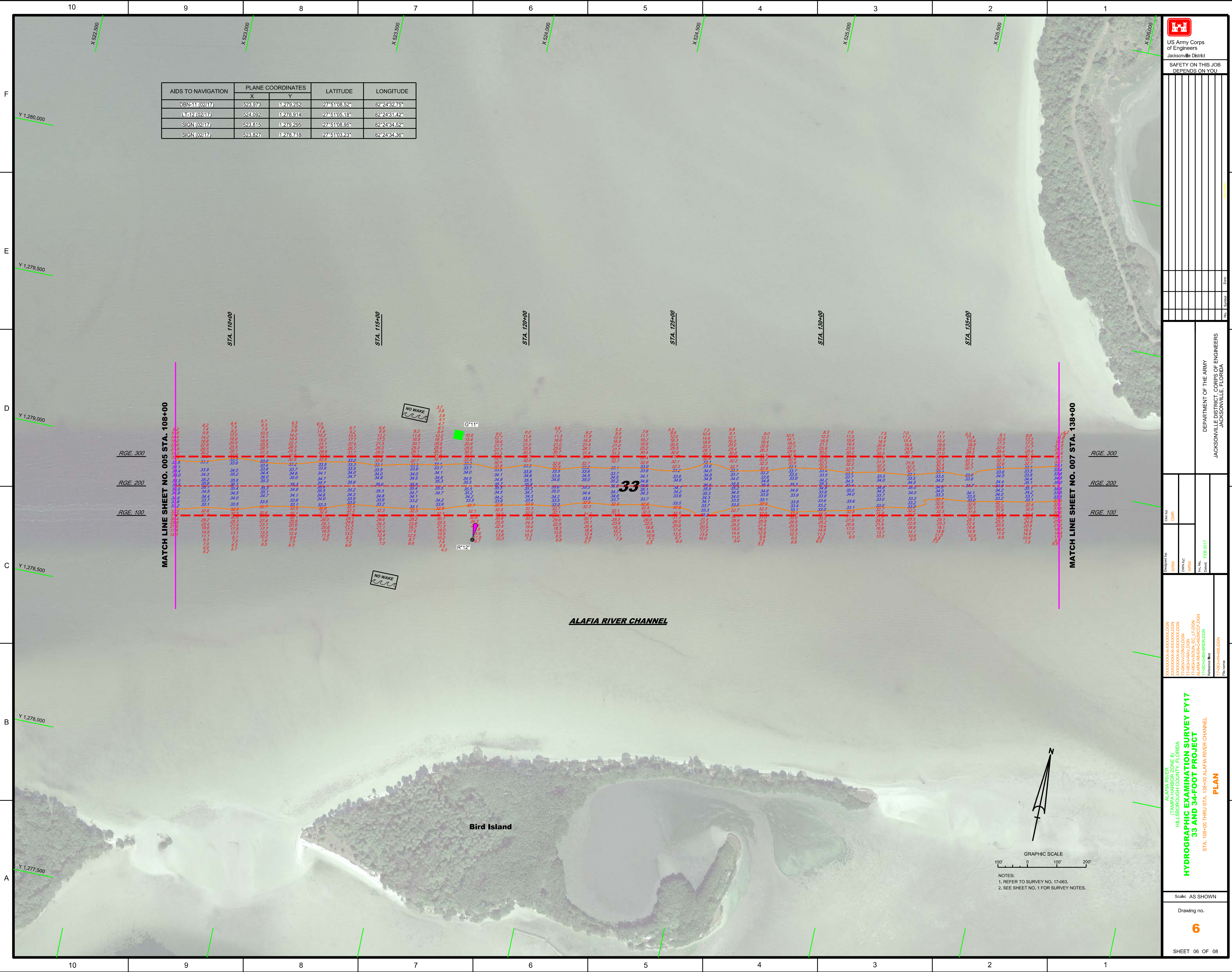
 US Army Corps of Engineers
 Jacksonville District
 SAFETY ON THIS JOB
 DEPENDS ON YOU

DEPARTMENT OF THE ARMY
 JACKSONVILLE DISTRICT, CORPS OF ENGINEERS
 JACKSONVILLE, FLORIDA

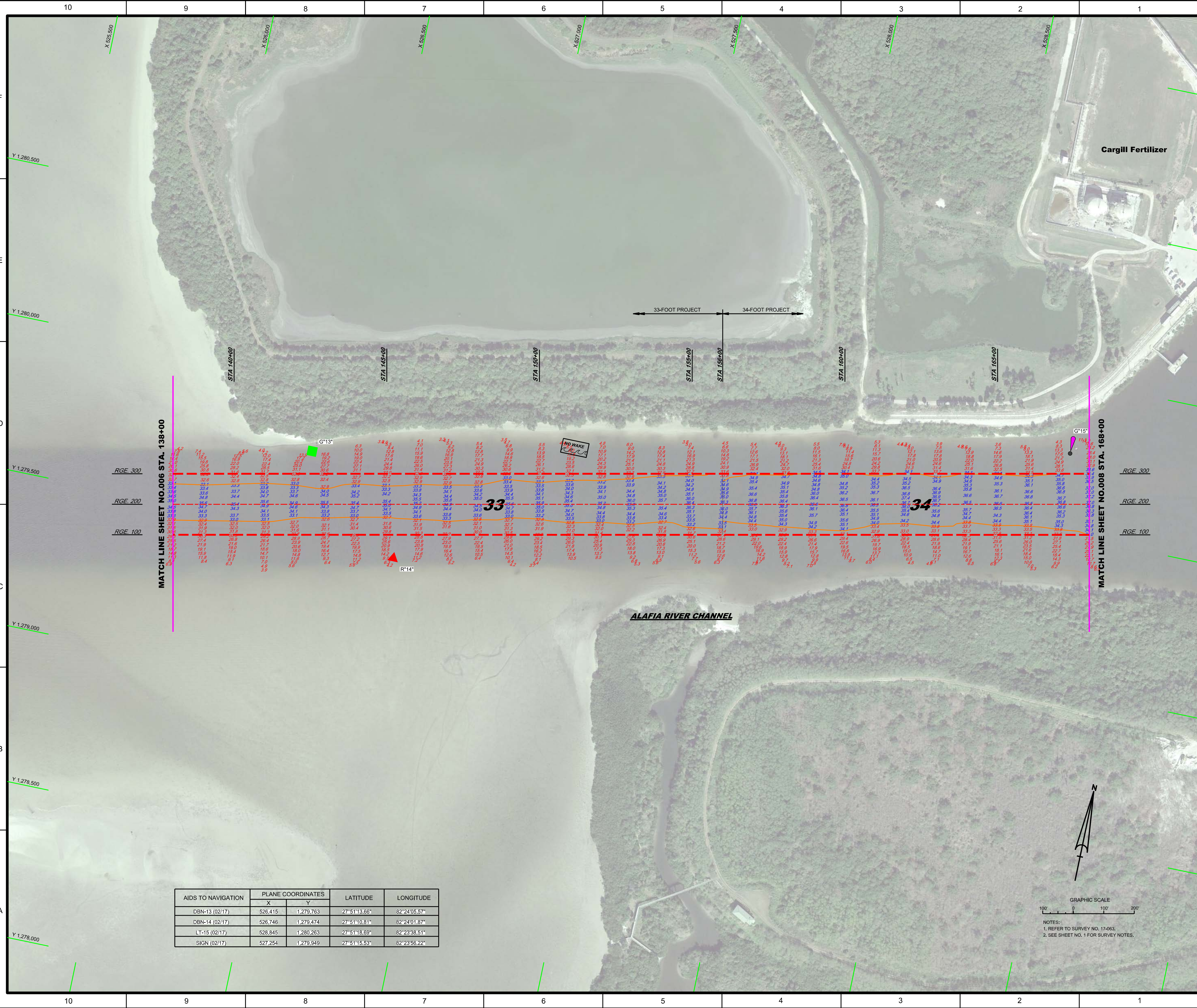
Designed by: **WRM**
 Drawn by: **WRM**
 Checked by: **WRM**
 Date: **FEB 2017**

ALAFIA RIVER
HILLSBOROUGH COUNTY, FLORIDA
HYDROGRAPHIC EXAMINATION SURVEY FY17
33 AND 34-FOOT PROJECT
 STA. 109+00 THRU STA. 138+00 ALAFIA RIVER CHANNEL
PLAN

Scale: AS SHOWN
 Drawing no. **6**
 SHEET 06 OF 08

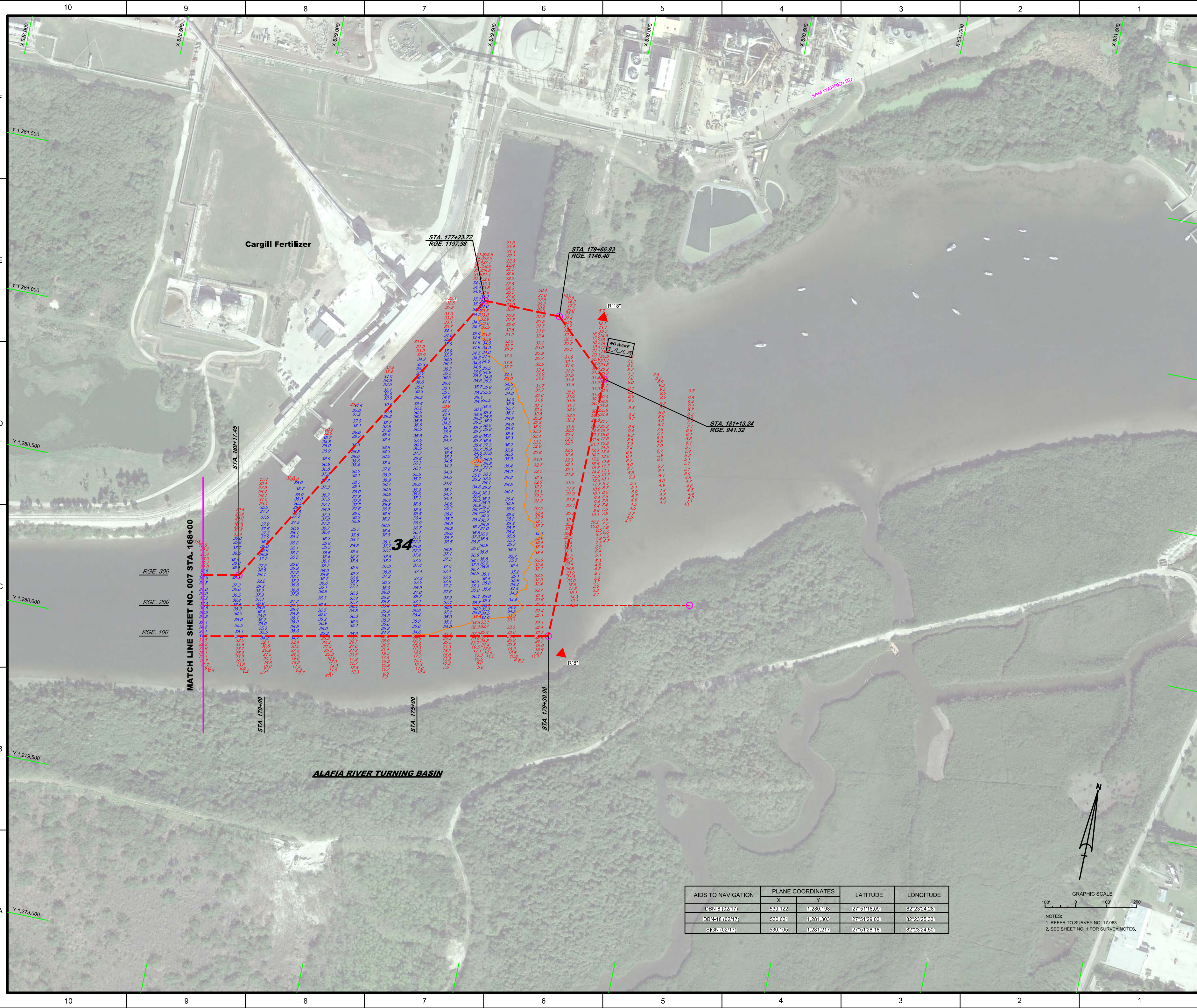


NOTES:
 1. REFER TO SURVEY NO. 17-063.
 2. SEE SHEET NO. 1 FOR SURVEY NOTES.



AIDS TO NAVIGATION	PLANE COORDINATES		LATITUDE	LONGITUDE
	X	Y		
DBN-13 (02/17)	526,415	1,279,763	27°51'13.66"	82°24'05.57"
DBN-14 (02/17)	526,746	1,279,474	27°51'10.81"	82°24'01.87"
LT-15 (02/17)	528,845	1,280,263	27°51'18.69"	82°23'38.51"
SIGN (02/17)	527,254	1,279,949	27°51'15.53"	82°23'56.22"

GRAPHIC SCALE
1" = 100'
NOTES:
1. REFER TO SURVEY NO. 17-063.
2. SEE SHEET NO. 1 FOR SURVEY NOTES.



AIDS TO NAVIGATION	PLANE COORDINATES		LATITUDE	LONGITUDE
	X	Y		
DBN-8 (0217)	530.122	1,280.198	27°51'18.09"	82°23'24.26"
DBN-18 (0217)	530.031	1,281.303	27°51'29.03"	82°23'25.33"
SIGN (0217)	530.105	1,281.217	27°51'28.18"	82°23'24.50"

GRAPHIC SCALE
100' 0 100' 200'

NOTES:
1. REFER TO SURVEY NO. 17-063.
2. SEE SHEET NO. 1 FOR SURVEY NOTES.