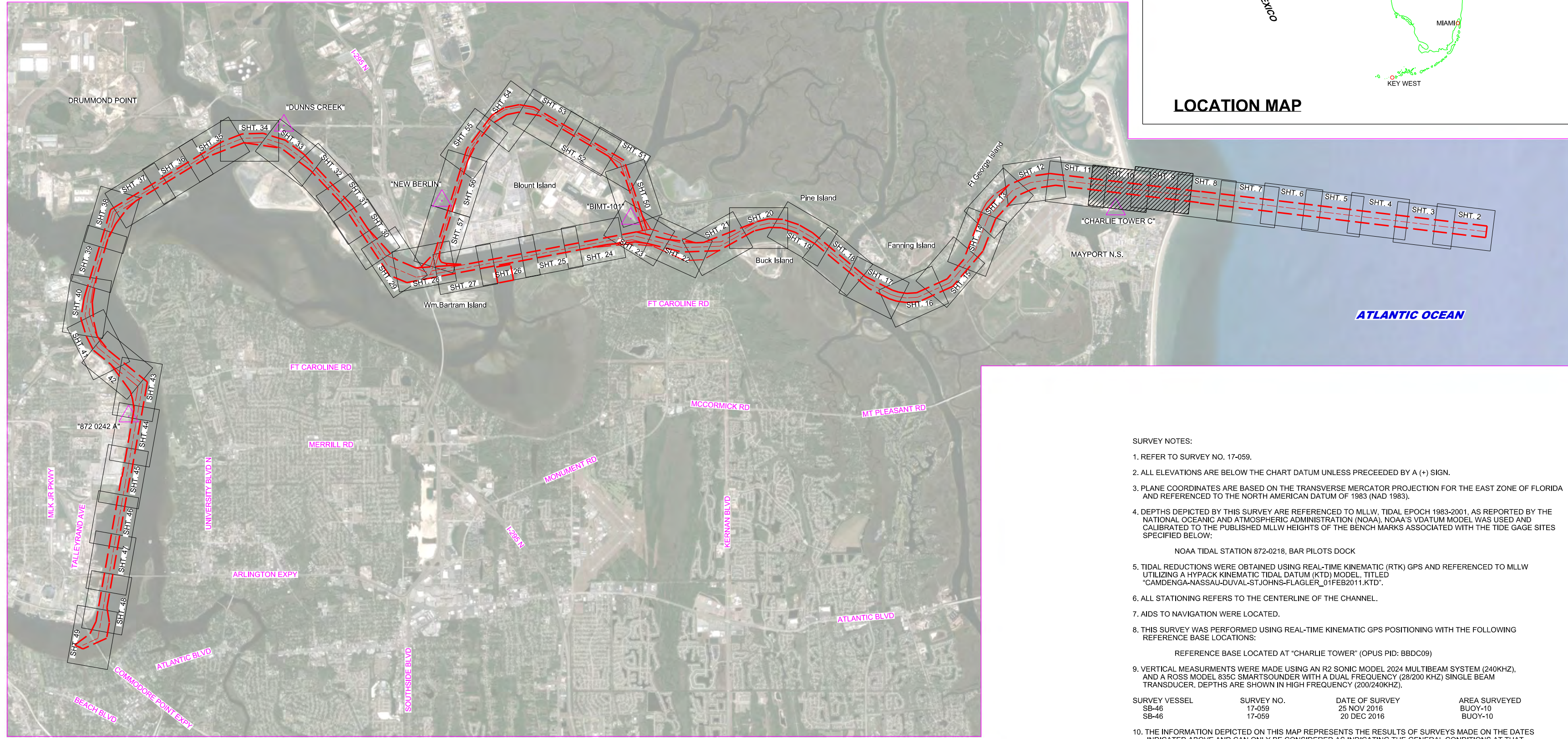
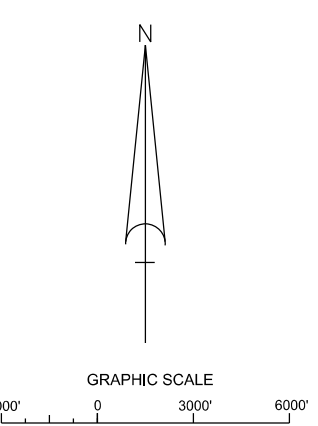


JACKSONVILLE HARBOR DUVAL COUNTY, FLORIDA VICINITY OF BUOY-10 HYDROGRAPHIC EXAM SURVEY FY17 30, 34, 38, 40 & 42-FOOT PROJECT



SURVEY NOTES:

- REFER TO SURVEY NO. 17-059.
- ALL ELEVATIONS ARE BELOW THE CHART DATUM UNLESS PRECEDED BY A (+) SIGN.
- PLANE COORDINATES ARE BASED ON THE TRANSVERSE MERCATOR PROJECTION FOR THE EAST ZONE OF FLORIDA AND REFERENCED TO THE NORTH AMERICAN DATUM OF 1983 (NAD 1983).
- DEPTHS DEPICTED BY THIS SURVEY ARE REFERENCED TO MLLW, TIDAL EPOCH 1983-2001, AS REPORTED BY THE NATIONAL OCEANIC AND ATMOSPHERIC ADMINISTRATION (NOAA). NOAA'S VDATUM MODEL WAS USED AND CALIBRATED TO THE PUBLISHED MLLW HEIGHTS OF THE BENCH MARKS ASSOCIATED WITH THE TIDE GAGE SITES SPECIFIED BELOW:
NOAA TIDAL STATION 872-0218, BAR PILOTS DOCK
- TIDAL REDUCTIONS WERE OBTAINED USING REAL-TIME KINEMATIC (RTK) GPS AND REFERENCED TO MLLW UTILIZING A HYPACK KINEMATIC TIDAL DATUM (KTD) MODEL TITLED "CAMDENGA-NASSAU-DUVAL-ST.JOHN'S-FLAGLER_01FEB2011.KTD".
- ALL STATIONING REFERS TO THE CENTERLINE OF THE CHANNEL.
- AIDS TO NAVIGATION WERE LOCATED.
- THIS SURVEY WAS PERFORMED USING REAL-TIME KINEMATIC GPS POSITIONING WITH THE FOLLOWING REFERENCE BASE LOCATIONS:
REFERENCE BASE LOCATED AT "CHARLIE TOWER" (OPUS PID: BBDC09)
- VERTICAL MEASUREMENTS WERE MADE USING AN R2 SONIC MODEL 2024 MULTIBEAM SYSTEM (240KHZ), AND A ROSS MODEL 835C SMARTSOUNDER WITH A DUAL FREQUENCY (28/200 KHZ) SINGLE BEAM TRANSDUCER. DEPTHS ARE SHOWN IN HIGH FREQUENCY (200/240KHZ).
- THE INFORMATION DEPICTED ON THIS MAP REPRESENTS THE RESULTS OF SURVEYS MADE ON THE DATES INDICATED ABOVE AND CAN ONLY BE CONSIDERED AS INDICATING THE GENERAL CONDITIONS AT THAT TIME. THIS CHART IS SOLELY FOR THE DISTRIBUTION OF AVAILABLE DEPTHS AT THE TIME OF SURVEY.
- SURVEY ACCURACY STANDARDS, QUALITY CONTROL, AND QUALITY ASSURANCE REQUIREMENTS WERE FOLLOWED DURING THIS SURVEY IN ACCORDANCE WITH USACE EM 1110-2-1003, HYDROGRAPHIC SURVEYING, 30 NOV 2013.



AUTHORIZED PROJECT DEPTH	
42 FT	CUT - 3 (BAR CUT) STA. 0+00 THRU STA. 210+00
40 FT	CUT - 3 (BAR CUT) STA. 210+00 THRU TERMINAL CHANNEL STA. 65+00
34 FT	TERMINAL CHANNEL STA. 65+00 THRU STA. 186+21 (APPROX. 1200 FEET UPSTREAM FROM THE HART BRIDGE NEAR COMMODORE POINT)
30 FT	CUT-A, STA. 0+00 THRU 53+10.21
38 FT	OLD RIVER BLOUNT ISLAND (WESTSIDE) CHANNEL CUT-F, STA. 10+00 - NEAR WOODEN FISHING BRIDGE PIER THRU INTERSECTION OF CUT - 42 (DAMES PT. - FULTON CUT - OFF

LEGEND	
	MONUMENT
	LIGHTED BUOY
	GREEN DAYBEACON
	RED DAYBEACON
	RED LIGHTED BUOY
	GREEN LIGHTED BUOY
	CAN BUOY
	NUN BUOY
	TIDE STAFF
	PROJECT DEPTH

US Army Corps of Engineers
Jacksonville District

SAFETY ON THIS JOB DEPENDS ON YOU

DEPARTMENT OF THE ARMY
JACKSONVILLE DISTRICT, CORPS OF ENGINEERS
JACKSONVILLE, FLORIDA

Drawn by:	GHR
Checked by:	WRM
Designated by:	WRM
Approved by:	WRM
File No.:	17-059-01
Date:	DEC 2016

JACKSONVILLE HARBOR, FLORIDA

BOUY-10 EMERGENCY EXAM SURVEY FY17

30, 34, 38, 40 & 42-FOOT PROJECT

INDEX, LOCATION AND VICINITY MAP

Scale: AS SHOWN

Drawing no.

1 / 30

SHEET 01 OF 57

