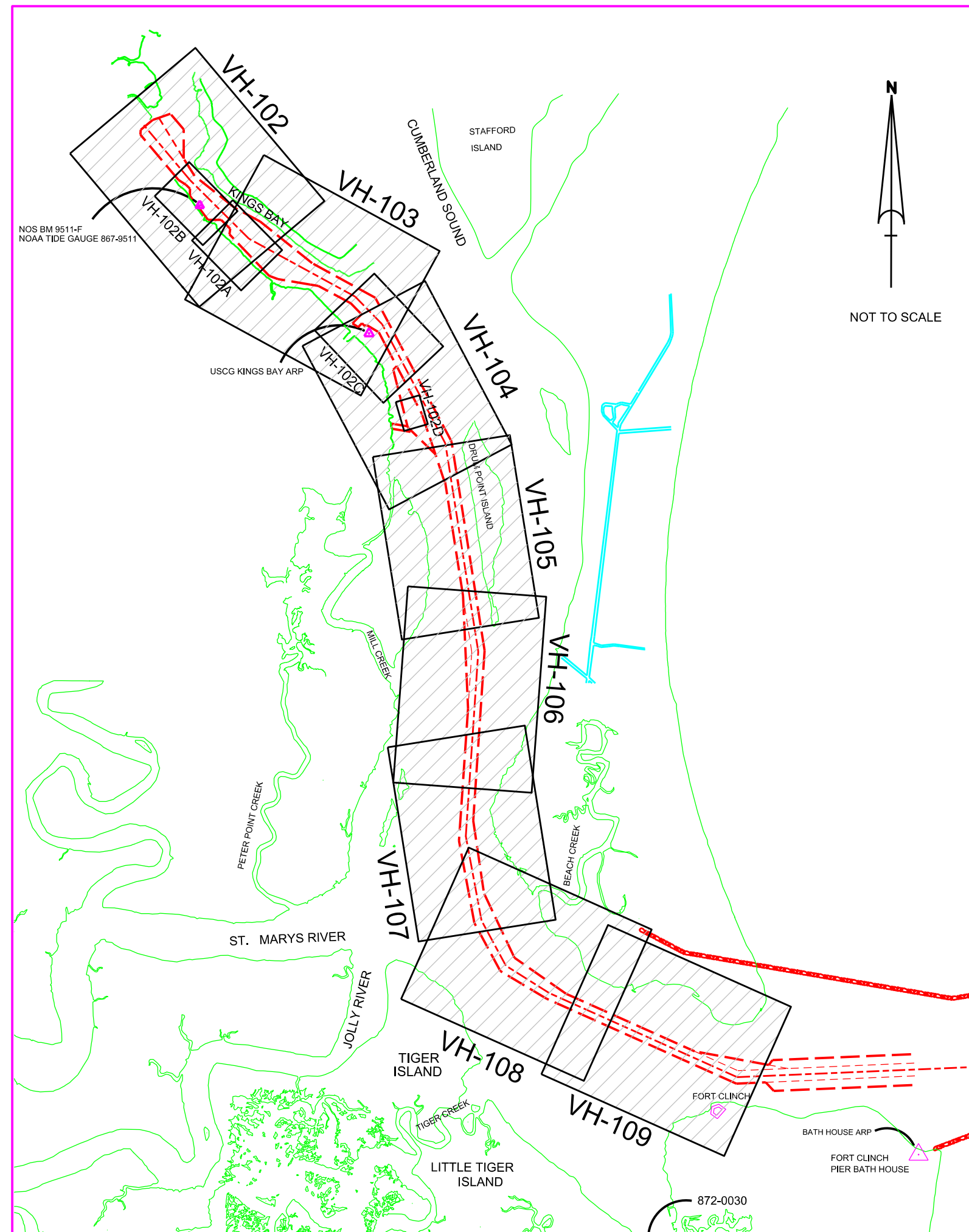


U.S. NAVY SUBMARINE BASE KINGS BAY, GEORGIA KINGS BAY INNER CHANNEL BIMONTHLY EXAMINATION SURVEY - DEC 2016



LEGEND

	MONUMENT
	LIGHTED BEACON
	GREEN DAY BEACON
	RED DAY BEACON
	RED LIGHTED BUOY
	GREEN LIGHTED BUOY
	CAN BUOY
	NUN BUOY
	TIDE STAFF
	MAJOR CONTOUR
	MINOR CONTOUR
	MAJOR DEPRESSION
	MINOR DEPRESSION

DEPTH COLOR CODE

≤ 39.9	Red
40.0 - 41.9	Orange
42.0 - 45.9	Yellow
46.0 - 48.9	Green
≥ 49.0	Blue

SURVEY NOTES:

- REFER TO SURVEY NO. 17-047.
 - SOUNDINGS ARE IN FEET AND TENTHS AND REFER TO MEAN LOWER LOW WATER (MLLW) TIDAL DATUM.
 - ALL ELEVATIONS ARE BELOW THE CHART DATUM UNLESS PRECEDED BY A (+) SIGN.
 - TIDAL REDUCTIONS WERE OBTAINED UTILIZING REAL-TIME KINEMATIC (RTK) GPS USING A HYPACK KINEMATIC TIDAL DATUM MODEL (KINGSBAY-2013 06 26.KTD).
 - PLANE COORDINATES ARE BASED ON THE TRANSVERSE MERCATOR PROJECTION FOR THE EAST ZONE OF GEORGIA AND REFERENCED TO NORTH AMERICAN DATUM OF 1983 (NAD83).
 - ALL STATIONING REFERS TO THE CENTERLINE OF THE CHANNEL.
 - THIS SURVEY WAS PERFORMED USING REAL-TIME KINEMATIC (RTK) GPS POSITIONING WITH THE FOLLOWING REFERENCE BASE LOCATIONS:
REFERENCE BASE LOCATED AT "BATH HOUSE ARP" (OPUS PID # BBDB08), FOR RANGE-A THRU RANGE-C.
REFERENCE BASE LOCATED AT "USCG KINGS BAY ARP" (OPUS PID # BBDB29), FOR RANGE-D THRU RANGE-I.
 - DEPTHS DEPICTED BY THIS SURVEY ARE REFERENCED TO MLLW, AS REPORTED BY THE NATIONAL OCEANIC AND ATMOSPHERIC ADMINISTRATION (NOAA). NOAA'S VDATUM MODEL WAS USED AND CALIBRATED TO THE PUBLISHED MLLW HEIGHTS OF THE BENCH MARKS ASSOCIATED WITH THE TIDE GAUGE SITES SPECIFIED BELOW:
NOAA TIDAL STATION 872-0030, FERNANDINA, FL, FOR RANGE-A THRU RANGE-G (OUTSIDE WRA)
NOAA TIDAL STATION 867-9511, KINGS BAY, GA, FOR RGE-G THRU RGE-I (INSIDE WRA)
 - VERTICAL MEASUREMENTS WERE MADE USING A RESON MODEL T20P MULTIBEAM SYSTEM AND A ROSS MODEL 835C SMARTSOUNDER WITH A DUAL-FREQUENCY (28/200KHZ) TRANSDUCER. SOUNDINGS SHOWN ARE IN HIGH FREQUENCY.
- | VESSEL | DATE OF SURVEY | AREA SURVEYED |
|--------|----------------|--|
| SB-36 | 1 DEC 2016 | RGE-B, RGE-C & RGE-D |
| SB-36 | 2 DEC 2016 | RGE-A, RGE-A1 & RGE-A2 |
| SB-36 | 3 DEC 2016 | RGE-G, STA 39+200-42+217, WARPING WHARF, RGE-I & REFIT WHARF |
| SB-36 | 4 DEC 2016 | SITE-E, MSF, RANGE-E & RANGE-D |
| SB-36 | 5 DEC 2016 | RGE-F, RGE-G, STA 37+504-39+100 & CRAB ISLAND APPROACH |
| SB-36 | 13 DEC 2016 | RGE-H, DRY DOCK SILL, EHW-1 & 2 |
- AIDS TO NAVIGATION WERE LOCATED DURING THIS SURVEY.
 - THE INFORMATION DEPICTED ON THIS MAP REPRESENTS THE RESULTS OF SURVEYS MADE ON THE DATES INDICATED ABOVE AND CAN ONLY BE CONSIDERED AS INDICATING THE GENERAL CONDITIONS AT THAT TIME. THIS CHART IS SOLELY FOR THE DISTRIBUTION OF AVAILABLE DEPTHS AT THE TIME OF THE SURVEY AND IS NOT TO BE USED FOR NAVIGATION.
 - SURVEY ACCURACY PERFORMANCE STANDARDS, QUALITY CONTROL, AND QUALITY ASSURANCE REQUIREMENTS WERE FOLLOWED IN ACCORDANCE WITH USACE EM 1110-2-1003, HYDROGRAPHIC SURVEYING, 30 NOV 2013 AND EM 1110-2-6056, STANDARDS AND PROCEDURES FOR REFERENCING PROJECT ELEVATION GRADES TO NATIONWIDE VERTICAL DATUMS, 31 DEC 2010.

US Army Corps of Engineers
Jacksonville District
SAFETY ON THIS JOB DEPENDS ON YOU

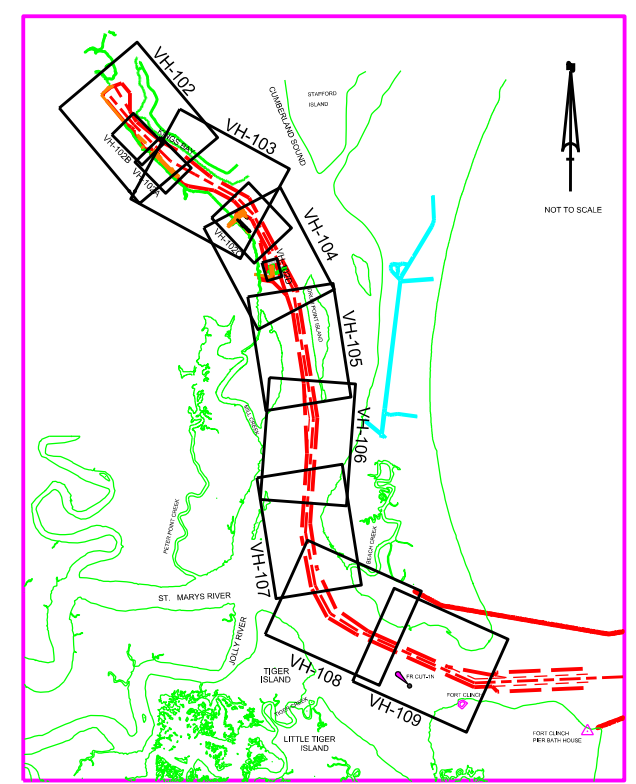
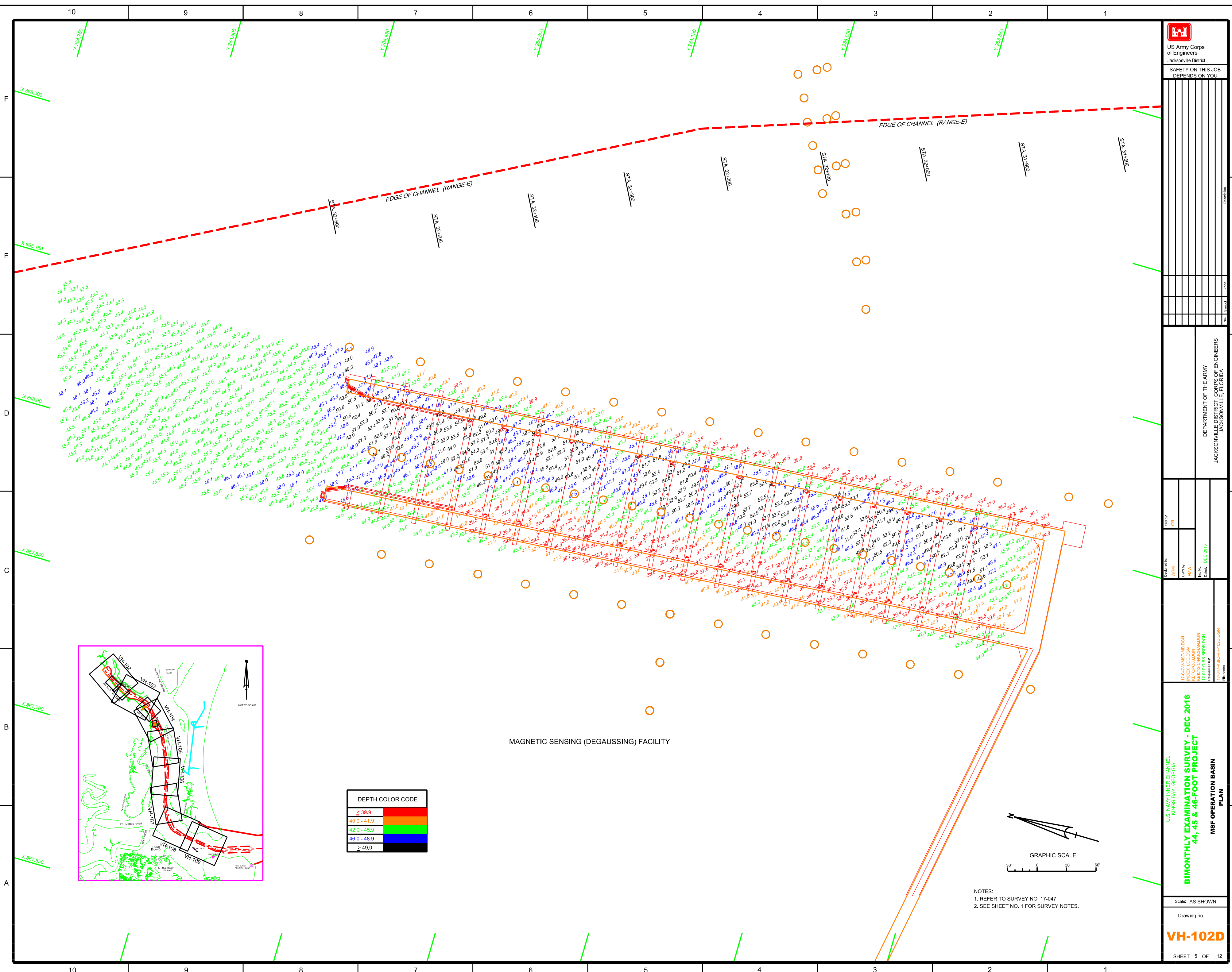
DEPARTMENT OF THE ARMY
JACKSONVILLE DISTRICT, CORPS OF ENGINEERS
JACKSONVILLE, FLORIDA

INDEX LOGBOOK
17-047-AB-C-VH-101.DGN
Reference files

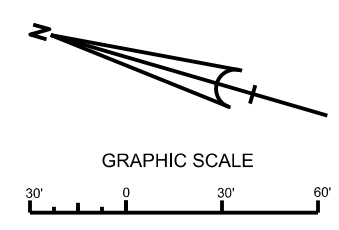
BIMONTHLY EXAMINATION SURVEY - DEC 2016
44, 45 & 46-FOOT PROJECT
INDEX, LOCATION AND VICINITY
MAP

Scale: AS SHOWN
Drawing no.
V-101

SHEET 01 OF 12



DEPTH COLOR CODE	
< 39.9	Red
40.0 - 41.9	Orange
42.0 - 45.9	Yellow
46.0 - 48.9	Green
> 49.0	Blue



NOTES:
1. REFER TO SURVEY NO. 17-047.
2. SEE SHEET NO. 1 FOR SURVEY NOTES.

US Army Corps of Engineers
Jacksonville District

SAFETY ON THIS JOB
DEPENDS ON YOU

DEPARTMENT OF THE ARMY
JACKSONVILLE DISTRICT, CORPS OF ENGINEERS
JACKSONVILLE, FLORIDA

Checked By: GR
Designed By: WRM
Drawn By: FHW
Reference Date: DEC 2016

U.S. NAVY INNER CHANNEL
KINGS BAY, GEORGIA

BIMONTHLY EXAMINATION SURVEY - DEC 2016
44, 45 & 46-FOOT PROJECT

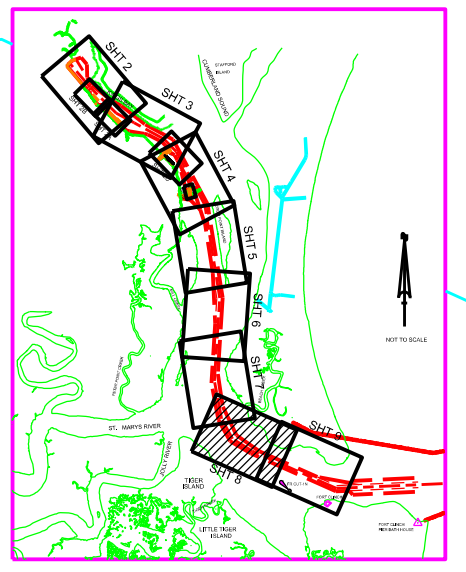
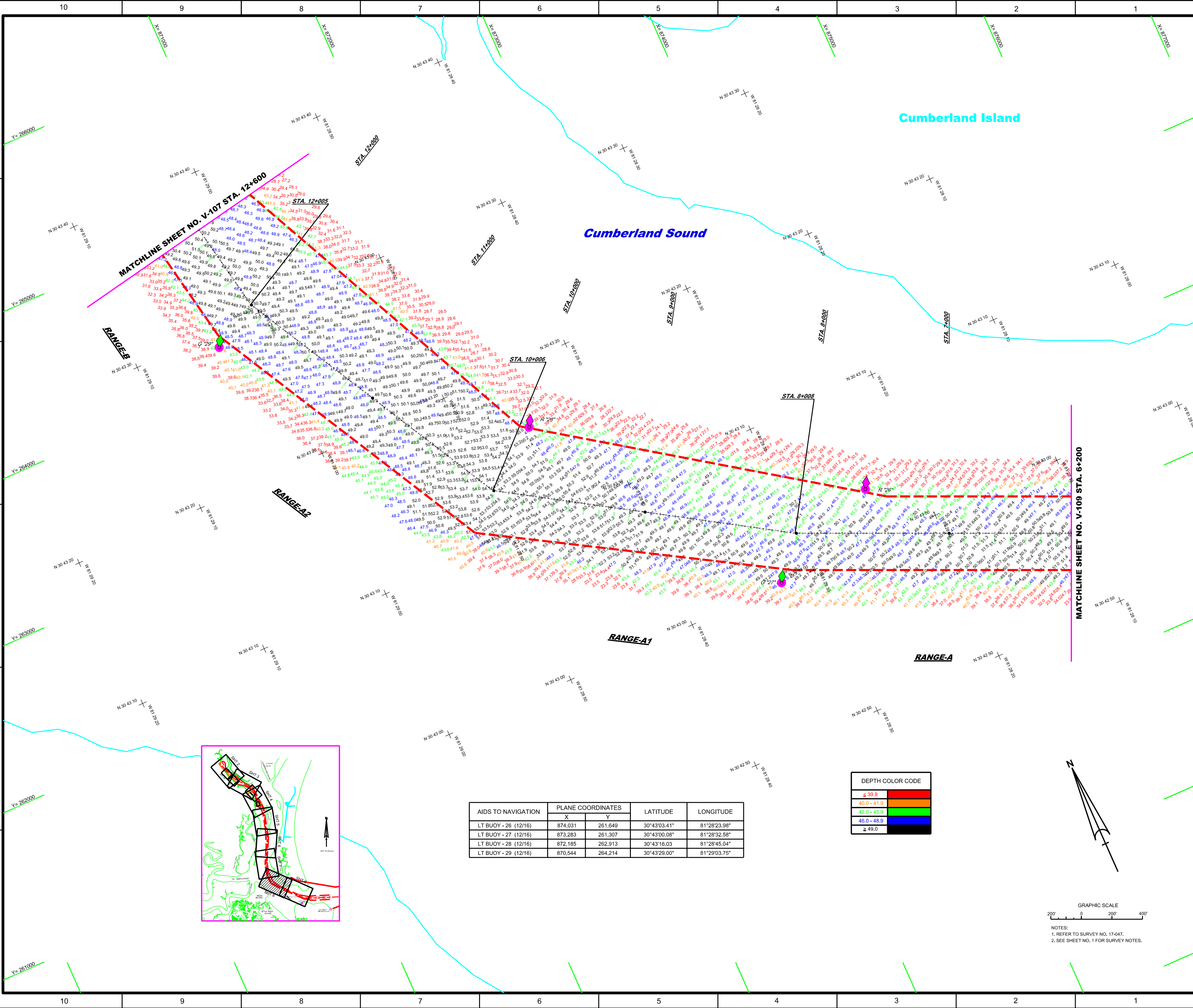
STA. 6+200 RANGES-A THRU STA. 12+600 RANGES-B

PLAN

Scale: AS SHOWN

Drawing no.
V-108

SHEET 11 OF 12



AIDS TO NAVIGATION	PLANE COORDINATES		LATITUDE	LONGITUDE
	X	Y		
LT BUOY - 26 (12/16)	874,031	261,649	30°43'03.41"	81°28'23.98"
LT BUOY - 27 (12/16)	873,283	261,307	30°43'00.08"	81°28'32.58"
LT BUOY - 28 (12/16)	872,185	262,913	30°43'16.03	81°28'45.04"
LT BUOY - 29 (12/16)	870,544	264,214	30°43'29.00"	81°29'03.75"

DEPTH COLOR CODE	
≤ 39.9	Red
40.0 - 41.9	Orange
42.0 - 45.9	Yellow
46.0 - 48.9	Green
≥ 49.0	Blue

NOTES:
1. REFER TO SURVEY NO. 17-047.
2. SEE SHEET NO. 1 FOR SURVEY NOTES.

US Army Corps of Engineers
Jacksonville District

SAFETY ON THIS JOB
DEPENDS ON YOU

DEPARTMENT OF THE ARMY
JACKSONVILLE DISTRICT, CORPS OF ENGINEERS
JACKSONVILLE, FLORIDA

Checked By: GRI
Drawn By: FHW
File No: V-109
Date: DEC 2016

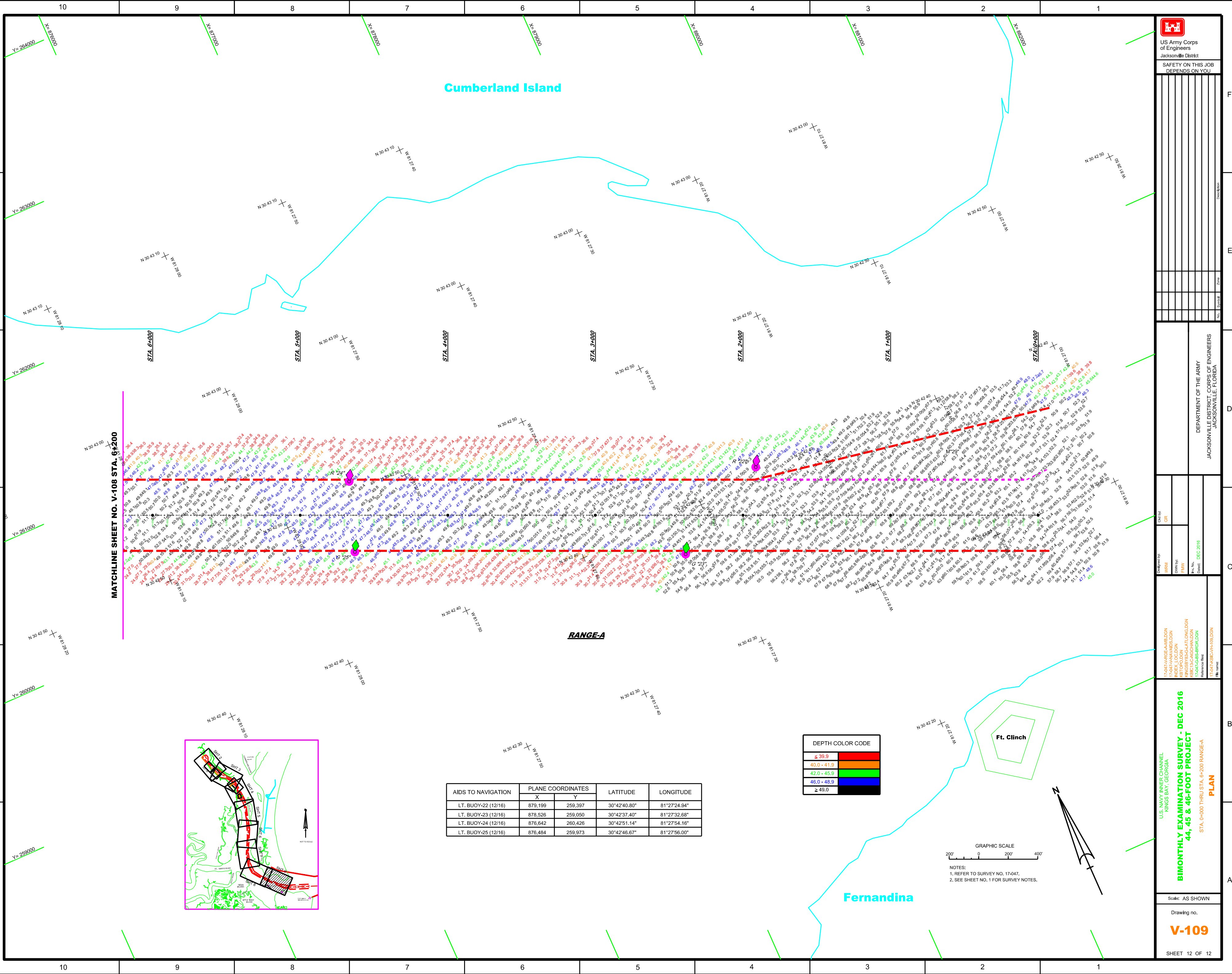
Project: BIMONTHLY EXAMINATION SURVEY - DEC 2016
44, 45 & 46-FOOT PROJECT
STA. 0+00 THRU STA. 6+200 RANGE-A

Scale: AS SHOWN

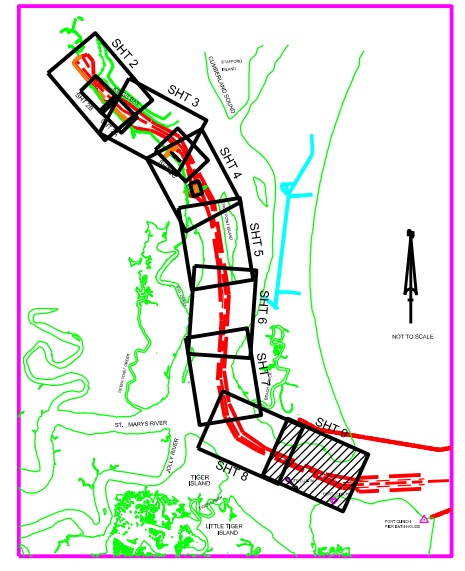
Drawing no. **V-109**

SHEET 12 OF 12

Cumberland Island



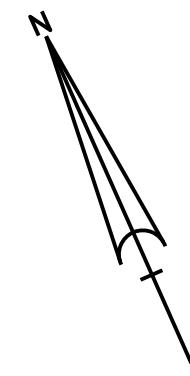
MATCHLINE SHEET NO. V-108 STA. 6+200



AIDS TO NAVIGATION	PLANE COORDINATES		LATITUDE	LONGITUDE
	X	Y		
LT. BUOY-22 (12/16)	879,199	259,397	30°42'40.80"	81°27'24.94"
LT. BUOY-23 (12/16)	878,526	259,050	30°42'37.40"	81°27'32.68"
LT. BUOY-24 (12/16)	876,642	260,426	30°42'51.14"	81°27'54.16"
LT. BUOY-25 (12/16)	876,484	259,973	30°42'46.67"	81°27'56.00"

DEPTH COLOR CODE	
≤ 39.9	Red
40.0 - 41.9	Orange
42.0 - 45.9	Yellow
46.0 - 48.9	Green
≥ 49.0	Blue

NOTES:
1. REFER TO SURVEY NO. 17-047.
2. SEE SHEET NO. 1 FOR SURVEY NOTES.



RANGE-A

Fernandina

Ft. Clinch