

SUWANNEE RIVER - MCGRIFF PASS DIXIE & LEVY COUNTY, FL POST-HURRICANE HERMINE EXAMINATION SURVEY FY17 6-FOOT PROJECT

SURVEY NOTES

- REFER TO SURVEY NO. 17-036.
- SOUNDINGS ARE IN FEET AND TENTHS AND REFER TO NOAA'S REPORTED MEAN LOWER LOW WATER (MLLW) OF THE 1983-2001 TIDAL EPOCH.
- TIDAL REDUCTIONS WERE OBTAINED UTILIZING A REAL-TIME KINEMATIC (RTK) GPS AND REFERENCED TO MLLW UTILIZING A HYPACK KINEMATIC TIDE DATUM (KTD) MODEL. KTD FILE NAME: "SPC-FL-WEST-2010-12-07.KTD".
- ALL ELEVATIONS ARE BELOW THE CHART DATUM UNLESS PRECEDED BY A (+) SIGN.
- PLANE COORDINATES ARE BASED ON THE TRANSVERSE MERCATOR PROJECTION FOR THE WEST ZONE OF FLORIDA AND REFERENCED TO THE CURRENT REALIZATION OF THE NORTH AMERICAN DATUM OF 1983 (NAD83), BASED ON THE NOAA NATIONAL SPATIAL REFERENCE SYSTEM (NSRS).
- ALL STATIONING REFERS TO THE CENTERLINE OF THE CHANNEL.
- THIS SURVEY WAS PERFORMED USING REAL-TIME KINEMATIC (RTK) GPS POSITIONING WITH THE FOLLOWING REFERENCE BASE LOCATION:
REFERENCE BASE LOCATED AT "SUWANNEE 1" (PID: BFB75)
- DEPTHS DEPICTED BY THIS SURVEY ARE REFERENCED TO MLLW, TIDAL EPOCH 1983-2001 AS REPORTED BY THE NATIONAL OCEANIC AND ATMOSPHERIC ADMINISTRATION (NOAA). NOAA'S DATUM MODEL WAS USED AND CALIBRATED TO THE PUBLISHED MLLW HEIGHTS OF THE BENCHMARKS ASSOCIATED WITH THE TIDE GAGE SITES SPECIFIED BELOW:

NOAA TIDAL STATION 872-7577 USED FOR ALL CUTS. (PID: AR1597)

VERTICAL MEASUREMENTS WERE MADE USING A ROSS SMART SOUNDER 835 SINGLE-BEAM TRANSDUCER OPERATING AT 200 KHZ (HIGH FREQUENCY). ALL SOUNDINGS SHOWN ARE IN HIGH FREQUENCY.
- VESEL DATE OF SURVEY CUT
SB-36 08-10 MAR 2017 CUTS 1 -11
- AIDS TO NAVIGATION WERE LOCATED DURING THIS SURVEY.
- THE INFORMATION DEPICTED ON THIS MAP REPRESENTS THE RESULTS OF SURVEYS MADE ON THE DATES INDICATED ABOVE AND CAN ONLY BE CONSIDERED AS INDICATING THE GENERAL CONDITIONS AT THAT TIME. THIS CHART IS SOLELY FOR THE DISTRIBUTION OF AVAILABLE DEPTHS AT THE TIME OF THE SURVEY.
- SURVEY ACCURACY PERFORMANCE STANDARDS, QUALITY CONTROL, AND QUALITY ASSURANCE REQUIREMENTS WERE FOLLOWED DURING THIS SURVEY IN ACCORDANCE WITH USACE EM 1110-2-1003, HYDROGRAPHIC SURVEYING, 30 NOV 13.

LEGEND	
	MONUMENT
	LIGHTED BEACON
	GREEN DAYBEACON
	RED DAYBEACON
	RED LIGHTED BUOY
	GREEN LIGHTED BUOY
	CAN BUOY
	NUN BUOY
	TIDE STAFF
	PROJECT DEPTH

US Army Corps of Engineers
Jacksonville District

SAFETY ON THIS JOB
DEPENDS ON YOU

DEPARTMENT OF THE ARMY
JACKSONVILLE DISTRICT, CORPS OF ENGINEERS
JACKSONVILLE, FLORIDA

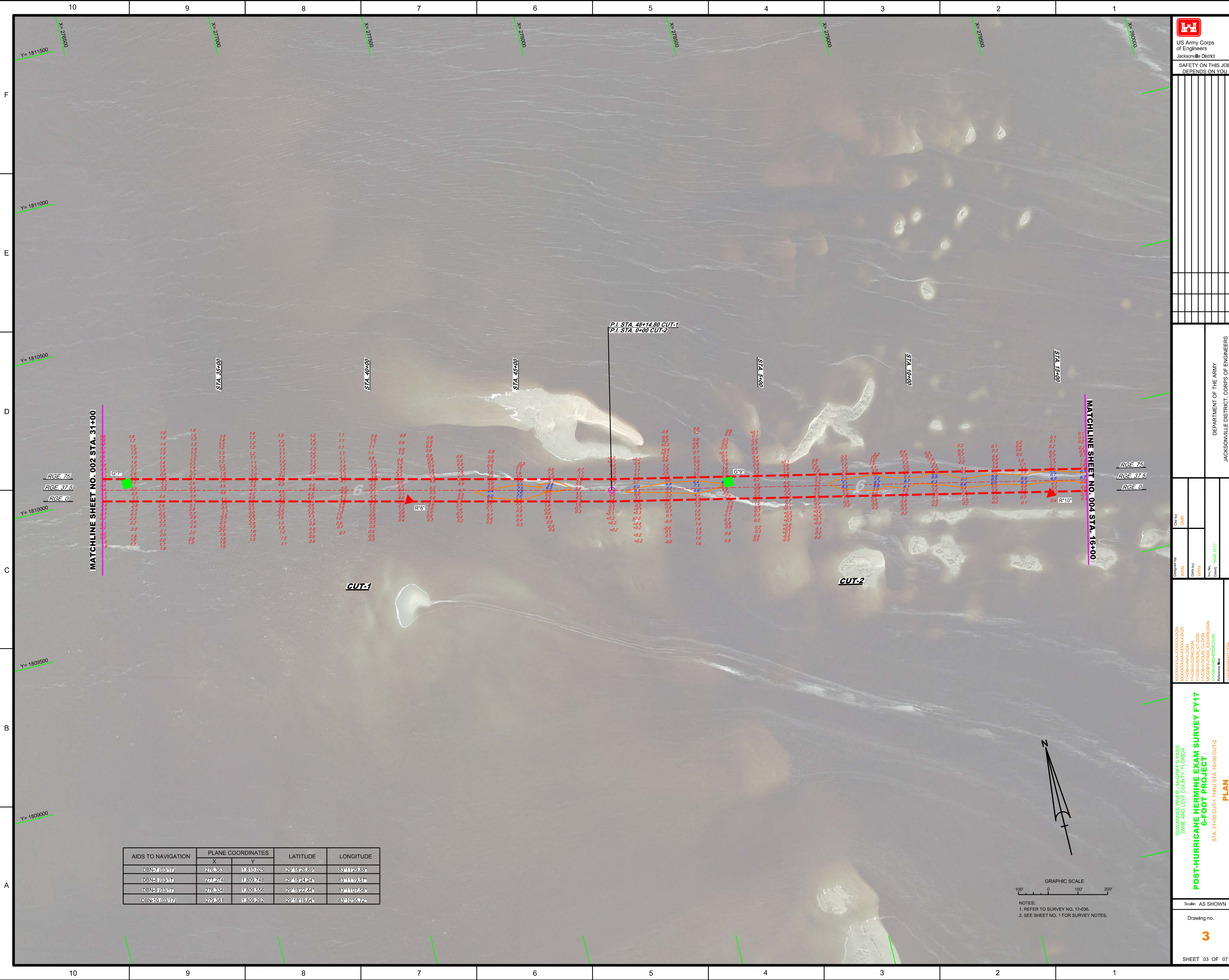
Checked by: GHR
Designed by: WRM
Drawn by: WRM
File No: WRM
Date: MAR 2017

SUWANNEE RIVER - MCGRIFF'S PASS
DIXIE AND LEVY COUNTY, FLORIDA
**POST-HURRICANE HERMINE EXAM
6-FOOT PROJECT**
INDEX, LOCATION AND VICINITY
MAP

Scale: AS SHOWN

Drawing no.
1

SHEET 01 OF 07



US Army Corps
 of Engineers
 Jacksonville District
**SAFETY ON THIS JOB
 DEPENDS ON YOU**

DEPARTMENT OF THE ARMY
 JACKSONVILLE DISTRICT, CORPS OF ENGINEERS
 JACKSONVILLE, FLORIDA

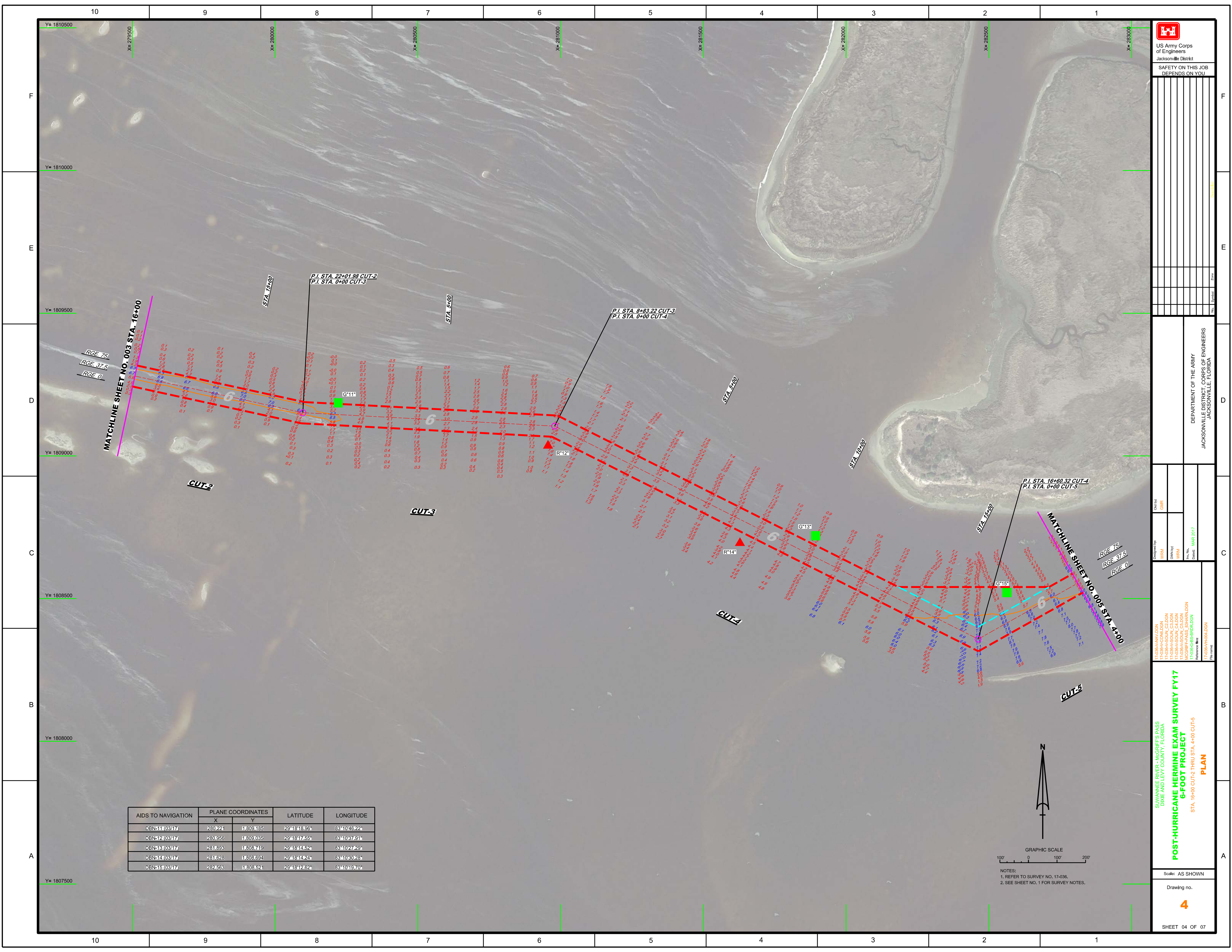
Checked by: **GHR**
 Designed by: **WRM**
 Drawn by: **WRM**
 File Name: **17-036-PASS_SHANNON**
 Date: **MAR 2017**

**POST-HURRICANE HERMINE EXAM SURVEY FY17
 6-FOOT PROJECT
 STA. 31+00 CUT-1 THRU STA. 16+00 CUT-2
 PLAN**

Scale: AS SHOWN
 Drawing no.
3
 SHEET 03 OF 07

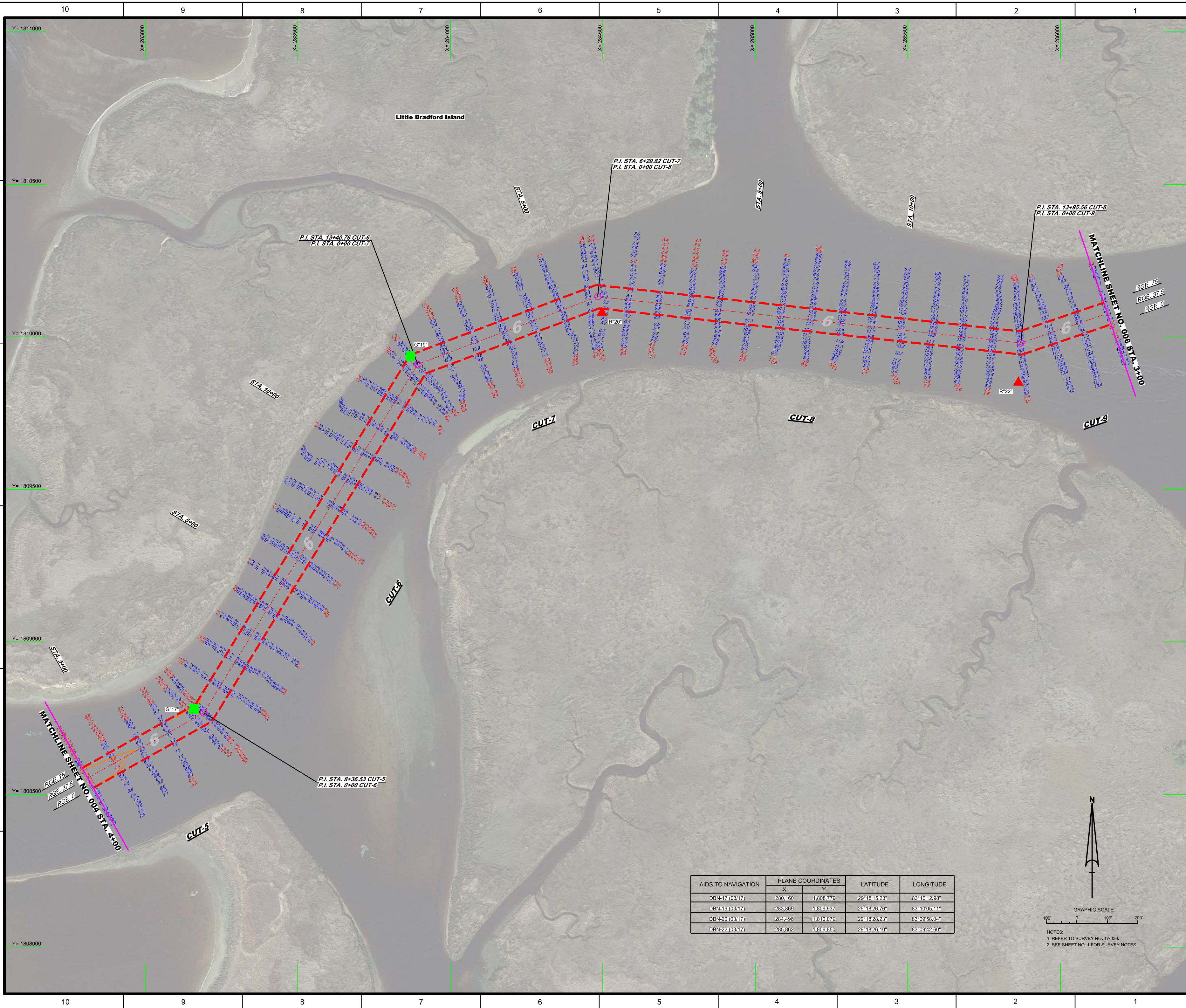
AIDS TO NAVIGATION	PLANE COORDINATES		LATITUDE	LONGITUDE
	X	Y		
DBN-7 (03417)	276.363	1,810,025	29°18'26.89"	83°41'29.88"
DBN-9 (03417)	277.274	1,809,748	29°18'24.24"	83°41'19.57"
DBN-9 (03417)	278.334	1,809,556	29°18'22.44"	83°41'07.55"
DBN-10 (03417)	279.381	1,809,262	29°18'19.64"	83°40'55.72"

GRAPHIC SCALE
 100' 0 100' 200'
 NOTES:
 1. REFER TO SURVEY NO. 17-036.
 2. SEE SHEET NO. 1 FOR SURVEY NOTES.



AIDS TO NAVIGATION	PLANE COORDINATES		LATITUDE	LONGITUDE
	X	Y		
DBN-11 (0347)	280,224	1,809,185	29°18'18.95"	83°10'46.22"
DBN-12 (0347)	280,556	1,809,085	29°18'17.65"	83°10'37.91"
DBN-13 (0347)	281,693	1,808,719	29°18'14.82"	83°10'27.29"
DBN-14 (0347)	281,628	1,808,694	29°18'14.24"	83°10'30.28"
DBN-15 (0347)	282,563	1,808,624	29°18'12.62"	83°10'19.70"

NOTES:
1. REFER TO SURVEY NO. 17-038.
2. SEE SHEET NO. 1 FOR SURVEY NOTES.





 US Army Corps
 of Engineers
 Jacksonville District
 SAFETY ON THIS JOB
 DEPENDS ON YOU

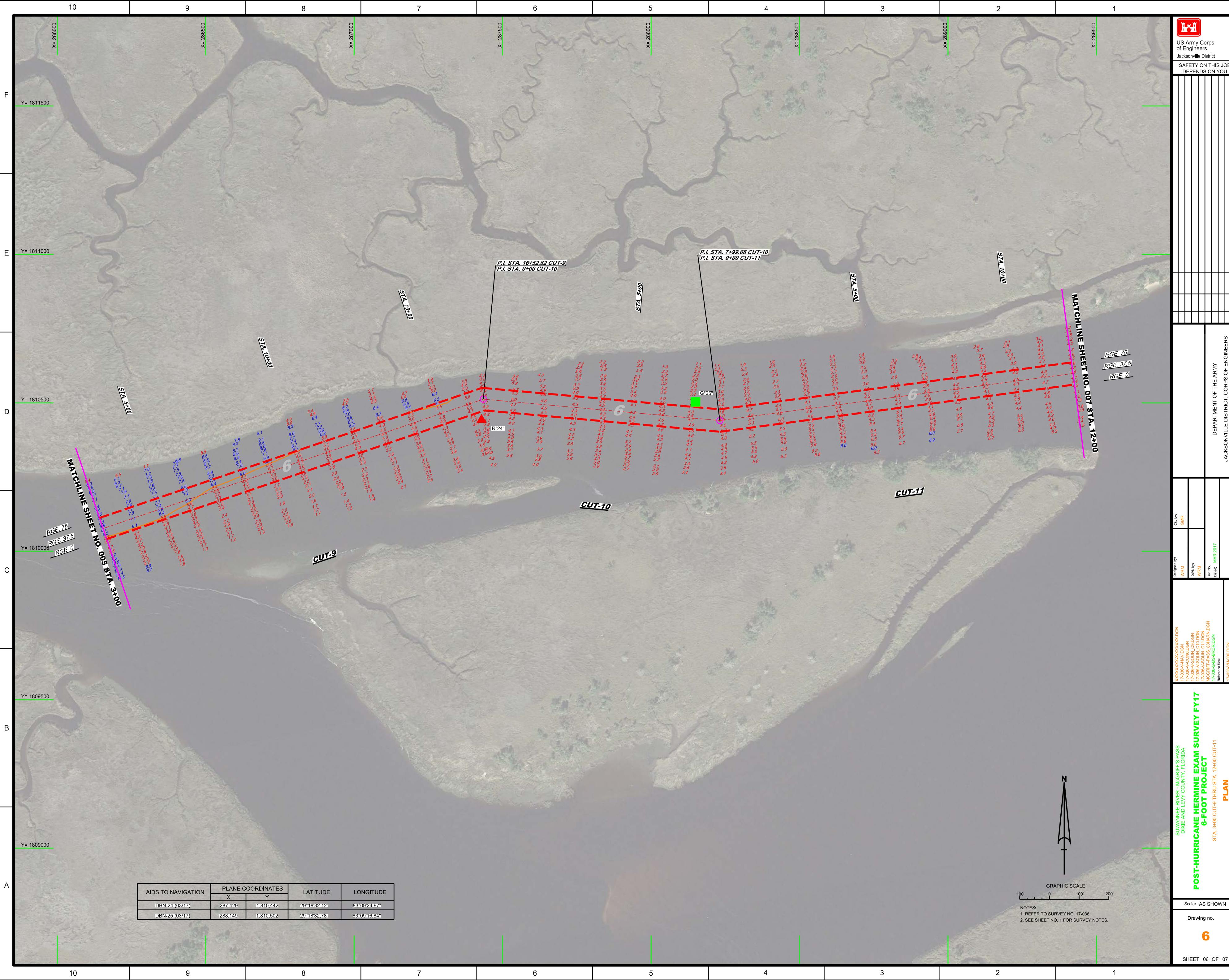
DEPARTMENT OF THE ARMY
 JACKSONVILLE DISTRICT, CORPS OF ENGINEERS
 JACKSONVILLE, FLORIDA

Contract No.: 17-036-AMVLDN
 Designer: 17-036-AMVLDN
 Designer: 17-036-AMVLDN
 Designer: 17-036-AMVLDN
 Designer: 17-036-AMVLDN
 Designer: 17-036-AMVLDN
 Designer: 17-036-AMVLDN
 Date: 03/17/2017

SUWANNEE RIVER - MCGRIFF'S PASS
 DIXIE AND LEVY COUNTY, FLORIDA
POST-HURRICANE HERMINE EXAM SURVEY FY17
6-FOOT PROJECT
 STA. 4+00 CUT-5 THRU STA. 3+00 CUT-9
PLAN
 Scale: AS SHOWN
 Drawing no. **5**
 SHEET 05 OF 07

AIDS TO NAVIGATION	PLANE COORDINATES		LATITUDE	LONGITUDE
	X	Y		
DBN-17 (03/17)	280.160	1.808.779	29°18'15.23"	83°10'12.98"
DBN-19 (03/17)	283.869	1.809.937	29°18'26.76"	83°10'05.11"
DBN-20 (03/17)	284.496	1.810.079	29°18'28.23"	83°09'58.04"
DBN-22 (03/17)	285.862	1.809.850	29°18'26.10"	83°09'42.60"


 GRAPHIC SCALE
 100' 0 100' 200'
 NOTES:
 1. REFER TO SURVEY NO. 17-036.
 2. SEE SHEET NO. 1 FOR SURVEY NOTES.

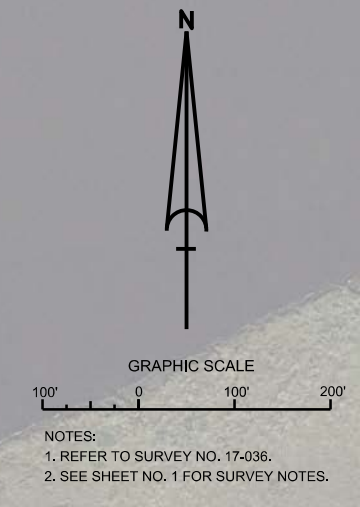


DEPARTMENT OF THE ARMY
 JACKSONVILLE DISTRICT CORPS OF ENGINEERS
 JACKSONVILLE, FLORIDA

Designed by: WRM
 Drawn by: WRM
 Checked by: GHR
 Date: MAR 2017

SUWANNEE RIVER - MCGRIFF'S PASS
 DIXIE AND LEVY COUNTY, FLORIDA
POST-HURRICANE HERMINE EXAM SURVEY FY17
6-FOOT PROJECT
 STA. 3+00 CUT-9 THRU STA. 12+00 CUT-11
PLAN

AIDS TO NAVIGATION	PLANE COORDINATES		LATITUDE	LONGITUDE
	X	Y		
DBN-24 (03/17)	287,429	1,810,442	29°18'32.12"	83°09'24.97"
DBN-25 (03/17)	288,149	1,810,502	29°18'32.78"	83°09'16.84"



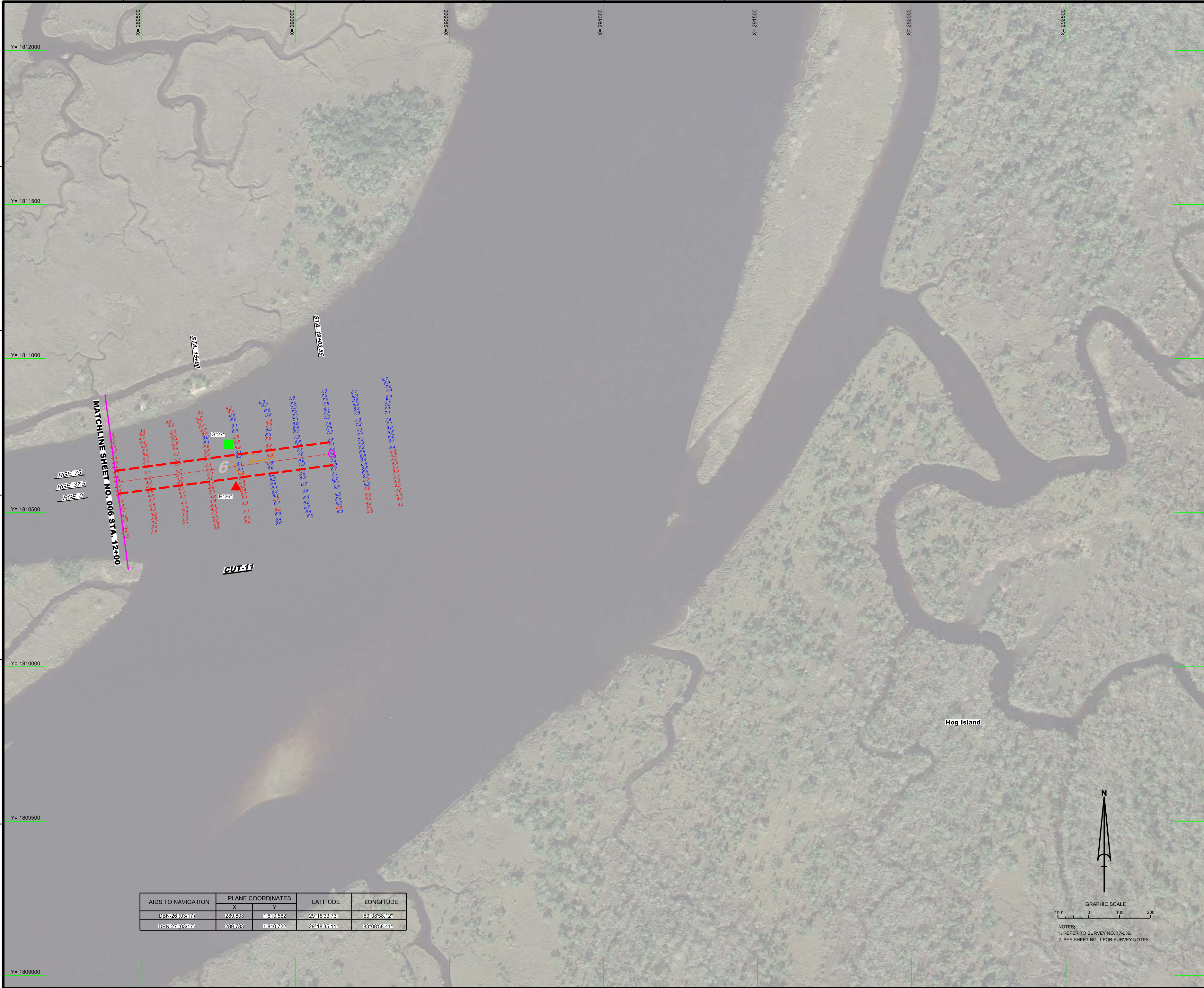
Checked by: GHR
Designed by: WRM
Drawn by: WRM
File Name: MAR 2017

XXXXXXXXXXXXXXXXX.DGN
XXXXXXXXXXXXXXXXX.DGN
XXXXXXXXXXXXXXXXX.DGN
XXXXXXXXXXXXXXXXX.DGN
XXXXXXXXXXXXXXXXX.DGN
XXXXXXXXXXXXXXXXX.DGN
XXXXXXXXXXXXXXXXX.DGN
XXXXXXXXXXXXXXXXX.DGN
XXXXXXXXXXXXXXXXX.DGN
XXXXXXXXXXXXXXXXX.DGN
XXXXXXXXXXXXXXXXX.DGN

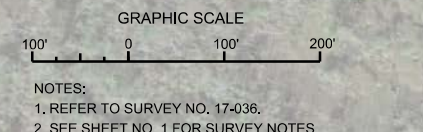
SUWANNEE RIVER - MCGRIFF'S PASS
DIXIE AND LEVY COUNTY, FLORIDA
POST-HURRICANE HERMINE EXAM SURVEY FY17
6-FOOT PROJECT
STA. 12+00 THRU STA. 19+03.55 CUT-11
PLAN

Scale: AS SHOWN

Drawing no.
7



AIDS TO NAVIGATION	PLANE COORDINATES		LATITUDE	LONGITUDE
	X	Y		
DBN26 (0317)	289.808	1,810,582	29°18'33.73"	83°08'58.12"
DBN27 (0317)	289.783	1,810,722	29°18'35.11"	83°08'58.41"



NOTES:
1. REFER TO SURVEY NO. 17-036.
2. SEE SHEET NO. 1 FOR SURVEY NOTES.