

NEW PASS SARASOTA COUNTY, FLORIDA POST-HURRICANE HERMINE EXAMINATION SURVEY FY17 8 AND 10-FOOT PROJECT

SURVEY NOTES

1. REFER TO SURVEY NO. 17-033.
 2. SOUNDINGS ARE IN FEET AND TENTHS AND REFER TO NOAA'S REPORTED MEAN LOWER LOW WATER (MLLW) OF THE 1983-2001 TIDAL EPOCH.
 3. TIDAL REDUCTIONS WERE OBTAINED UTILIZING A REAL-TIME KINEMATIC (RTK) GPS AND REFERENCED TO MLLW UTILIZING A HYPACK KINEMATIC TIDE DATUM (KTD) MODEL. KTD FILE NAME IS: "SPC-FL-WEST-2010-12-07.KTD".
 4. ALL ELEVATIONS ARE BELOW THE CHART DATUM UNLESS PRECEDED BY A (+) SIGN.
 5. PLANE COORDINATES ARE BASED ON THE TRANSVERSE MERCATOR PROJECTION FOR THE WEST ZONE OF FLORIDA AND REFERENCED TO NORTH AMERICAN DATUM OF 1983 (NAD83).
 6. ALL STATIONING REFERS TO THE CENTERLINE OF THE CHANNEL.
 7. THIS SURVEY WAS PERFORMED USING REAL-TIME KINEMATIC (RTK) GPS POSITIONING WITH THE FOLLOWING REFERENCE BASE LOCATION:
REFERENCE BASE LOCATED AT "IWSA-96" (PID: BBDG39)
 8. DEPTHS DEPICTED BY THIS SURVEY ARE REFERENCED TO MLLW. TIDAL EPOCH 1983-2001 AS REPORTED BY THE NATIONAL OCEANIC AND ATMOSPHERIC ADMINISTRATION (NOAA). NOAA'S VDATUM MODEL WAS USED AND CALIBRATED TO THE PUBLISHED MLLW HEIGHTS OF THE BENCHMARKS ASSOCIATED WITH THE TIDE GAGE SITES SPECIFIED BELOW:

NOAA TIDAL STATION 872-6083 USED FOR ALL CUTS. (PID: AG7713)

VERTICAL MEASUREMENTS WERE MADE USING AN EDGETECH MODEL 6205 INTERFEROMETRIC SYSTEM OPERATING AT 500-800 KHZ AND A ROSS SMARTSOUNDER MODEL 833C DUAL-FREQUENCY 28/200 KHZ SINGLE-BEAM TRANSDUCER. ALL SOUNDINGS SHOWN ARE IN HIGH FREQUENCY.
- | VESSEL | DATE OF SURVEY | CUT |
|--------|----------------|--------------------|
| SB-48 | 04 JAN 2017 | 1-7, TURNING BASIN |
9. AIDS TO NAVIGATION WERE LOCATED DURING THIS SURVEY.
 10. THE INFORMATION DEPICTED ON THIS MAP REPRESENTS THE RESULTS OF SURVEYS MADE ON THE DATES INDICATED ABOVE AND CAN ONLY BE CONSIDERED AS INDICATING THE GENERAL CONDITIONS AT THAT TIME. THIS CHART IS SOLELY FOR THE DISTRIBUTION OF AVAILABLE DEPTHS AT THE TIME OF THE SURVEY.
 11. SURVEY ACCURACY PERFORMANCE STANDARDS, QUALITY CONTROL, AND QUALITY ASSURANCE REQUIREMENTS WERE FOLLOWED DURING THIS SURVEY IN ACCORDANCE WITH USAGE EM 1110-2-1003, HYDROGRAPHIC SURVEYING, 30 NOV 13.

LEGEND	
	GPS MONUMENT
	LIGHTED BEACON
	GREEN DAYBEACON
	RED DAYBEACON
	RED LIGHTED BUOY
	GREEN LIGHTED BUOY
	CAN BUOY
	NUN BUOY
	TIDE STAFF
8	PROJECT DEPTH

US Army Corps of Engineers
Jacksonville District

**SAFETY ON THIS JOB
DEPENDS ON YOU**

<p>Check by: GHR</p> <p>Designed by: WRM</p> <p>Drawn by: WRM</p> <p>File No: WSP255-000-0000</p> <p>Date: JAN 2017</p> <p>Reference Mark: 17-033-04001.DGN</p> <p>File Name:</p>	<p>DEPARTMENT OF THE ARMY JACKSONVILLE DISTRICT, CORPS OF ENGINEERS JACKSONVILLE, FLORIDA</p>
---	---

NEW PASS
SARASOTA COUNTY, FLORIDA
POST-HURRICANE HERMINE EXAM SURVEY FY17
8 & 10-FOOT PROJECT
INDEX, LOCATION AND VICINITY
MAP

Scale: AS SHOWN

Drawing no.
1 / 7


SHEET 01 OF 08

AIDS TO NAVIGATION	PLANE COORDINATES		LATITUDE	LONGITUDE
	X	Y		
LT-7 (01/17)	465,208	1,088,832	27°19'40.58"	82°35'17.34"
DBN-9 (01/17)	466,390	1,090,062	27°19'52.82"	82°35'04.30"

LONGBOAT KEY

LIDO KEY

LIDO SHORES



US Army Corps of Engineers
Jacksonville District
SAFETY ON THIS JOB
DEPENDS ON YOU

DESIGNED BY:
WRM
DWN/PJC
WRM
WRM

CHECKED BY:
GHR
GHR

DATE:
JAN 2017

DEPARTMENT OF THE ARMY
JACKSONVILLE DISTRICT, CORPS OF ENGINEERS
JACKSONVILLE, FLORIDA

NEW PASS
SARASOTA COUNTY, FLORIDA

**POST-HURRICANE HERMINE EXAM SURVEY FY17
8 & 10-FOOT PROJECT**

STA. 4+00 CUT-2 THRU STA. 2+00 CUT-4
PLAN

Reference Map:
17-033-A-H40-02EN

Scale: AS SHOWN

Drawing no.
3 / 7

SHEET 03 OF 08

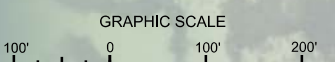
STATIONING AND POINT INFORMATION:
P.I. STA. 16+46.96 CUT-2
P.I. STA. 0+00 CUT-3
P.I. STA. 16+90.58 CUT-3
P.I. STA. 0+00 CUT-4

MATCHLINE SHEET NO. 002 STA. 4+00

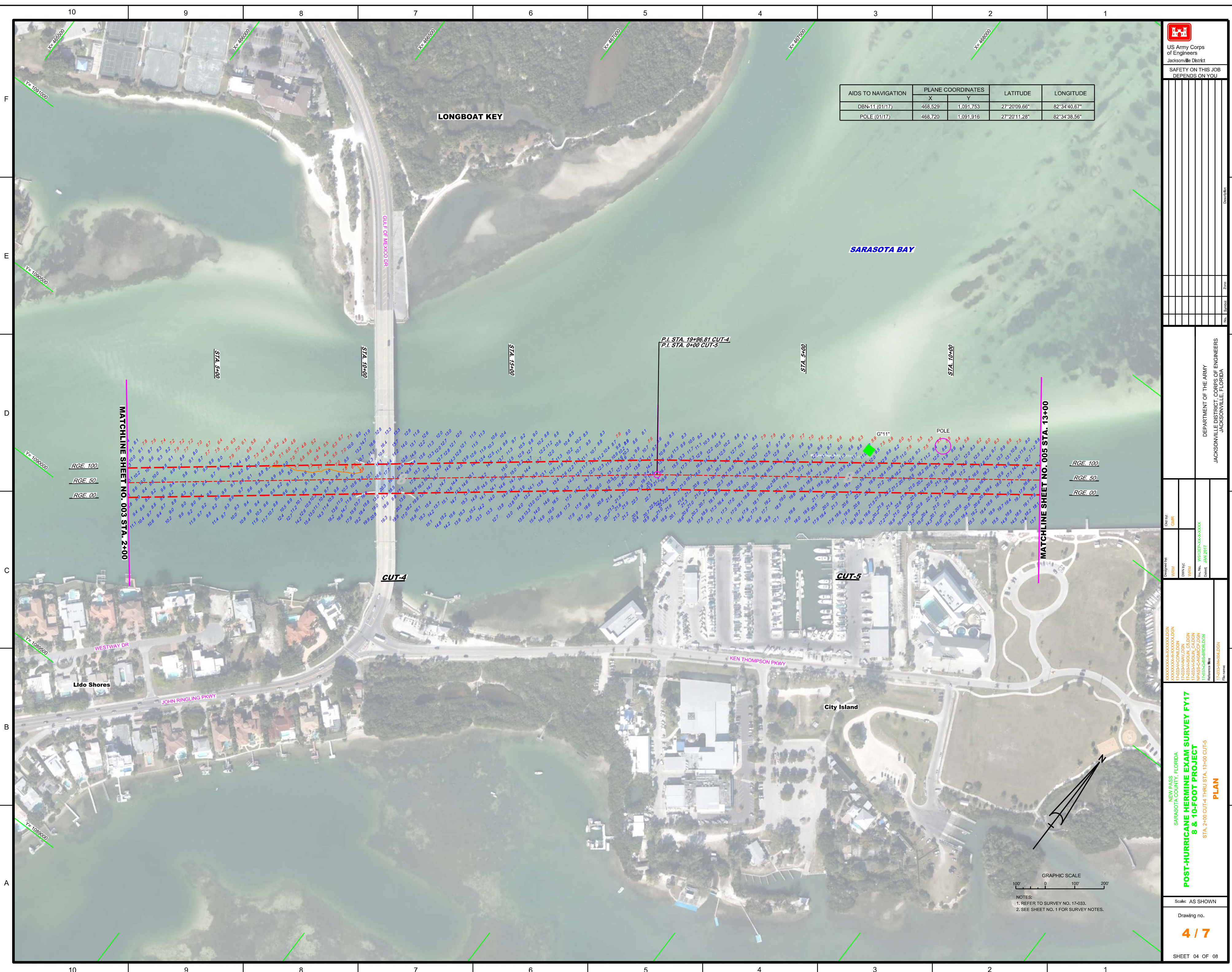
MATCHLINE SHEET NO. 004 STA. 2+00

RGE VARIES
RGE 125
RGE 50
RGE -25

RGE 100
RGE 50
RGE 00



NOTES:
1. REFER TO SURVEY NO. 17-033.
2. SEE SHEET NO. 1 FOR SURVEY NOTES.



AIDS TO NAVIGATION	PLANE COORDINATES		LATITUDE	LONGITUDE
	X	Y		
DBN-11 (01/17)	468,529	1,091,753	27°20'09.66"	82°34'40.67"
POLE (01/17)	468,720	1,091,916	27°20'11.28"	82°34'38.56"

US Army Corps of Engineers
Jacksonville District
SAFETY ON THIS JOB
DEPENDS ON YOU

DEPARTMENT OF THE ARMY
JACKSONVILLE DISTRICT, CORPS OF ENGINEERS
JACKSONVILLE, FLORIDA

No.	Symbol	Zone

**POST-HURRICANE HERMINE EXAM SURVEY FY17
8 & 10-FOOT PROJECT**
PLAN

Scale: AS SHOWN
Drawing no. **4/7**
SHEET 04 OF 08

DESIGNED BY: WRM, BRM, NPS, GSD, NPS, GSD, NPS, GSD
CHECKED BY: WRM, BRM, NPS, GSD, NPS, GSD, NPS, GSD
DATE: JAN 2017

GRAPHIC SCALE
0 100' 200'

NOTES:
1. REFER TO SURVEY NO. 17-033.
2. SEE SHEET NO. 1 FOR SURVEY NOTES.

US Army Corps of Engineers Jacksonville District				
SAFETY ON THIS JOB DEPENDS ON YOU				

AIDS TO NAVIGATION	PLANE COORDINATES		LATITUDE	LONGITUDE
	X	Y		
LT-13 (0117)	469,716	1,092,601	27°20'18.12"	82°34'27.56"
DBN-15 (0117)	474,127	1,093,144	27°20'23.55"	82°34'11.94"
SIGN (0117)	470,229	1,092,678	27°20'18.90"	82°34'21.87"

SARASOTA BAY

P.I. STA. 23+42.07 CUT-5
P.I. STA. 0+00 CUT-6

STA. 20+00

STA. 5+00

STA. 10+00

STA. 15+00

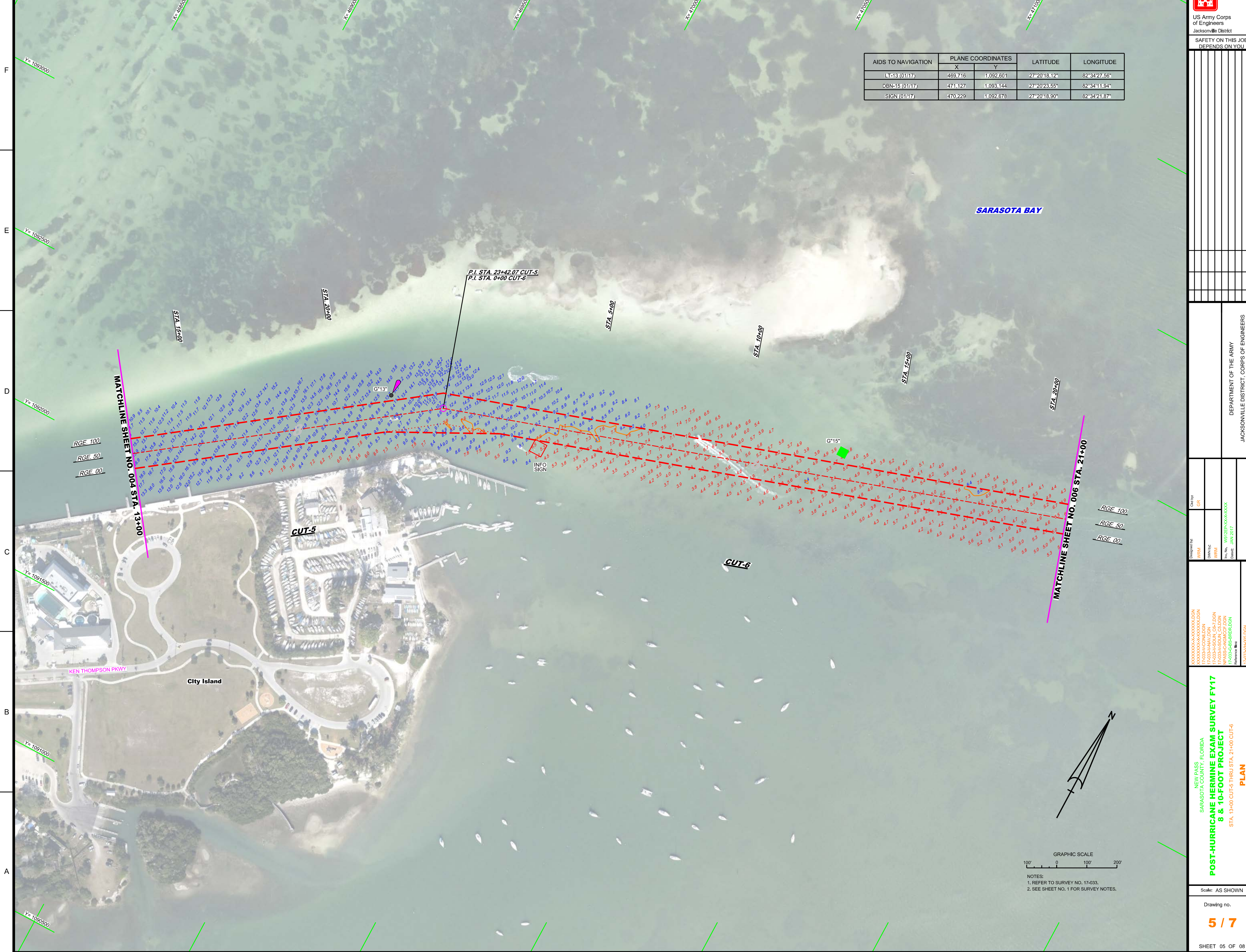
STA. 20+00

MATCHLINE SHEET NO. 004 STA. 13+00

MATCHLINE SHEET NO. 006 STA. 21+00

RGE. 100
RGE. 50
RGE. 00

RGE. 100
RGE. 50
RGE. 00



GRAPHIC SCALE
0 100 200

NOTES:
1. REFER TO SURVEY NO. 17-033.
2. SEE SHEET NO. 1 FOR SURVEY NOTES.

DEPARTMENT OF THE ARMY
JACKSONVILLE DISTRICT, CORPS OF ENGINEERS
JACKSONVILLE, FLORIDA

Designed by: **WRM**
Checked by: **GR**
Drawn by: **WRM**
Scale: **AS SHOWN**
Date: **JAN 2017**

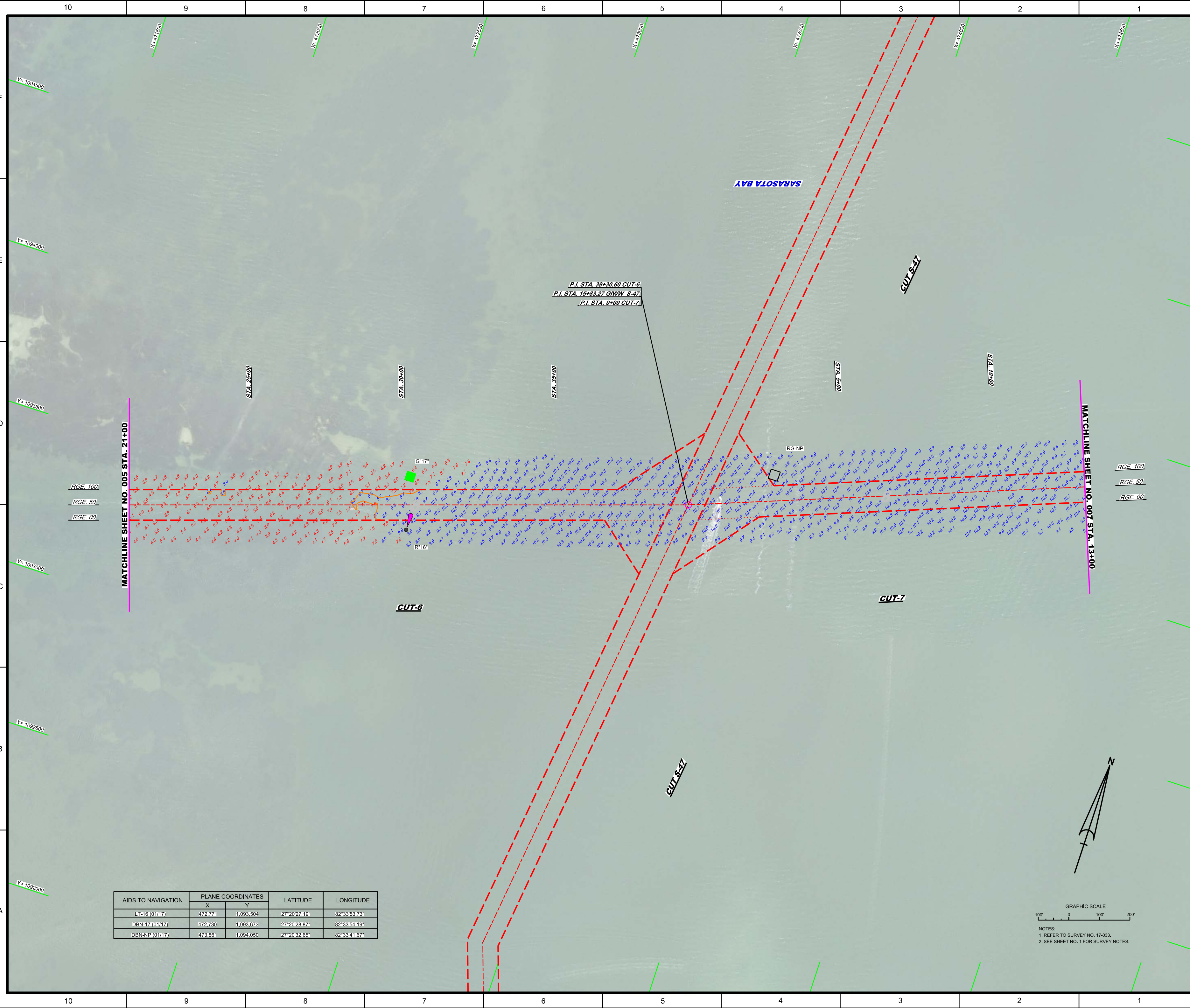
NEW PASS
SARASOTA COUNTY, FLORIDA
POST-HURRICANE HERMINE EXAM SURVEY FY17
8 & 10-FOOT PROJECT
STA. 13+00 CUT-5 THRU STA. 21+00 CUT-6
PLAN

Scale: AS SHOWN

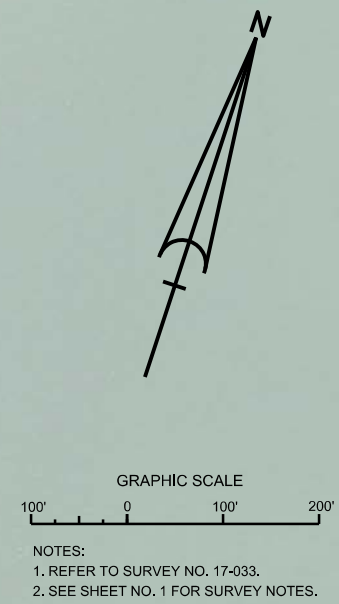
Drawing no.

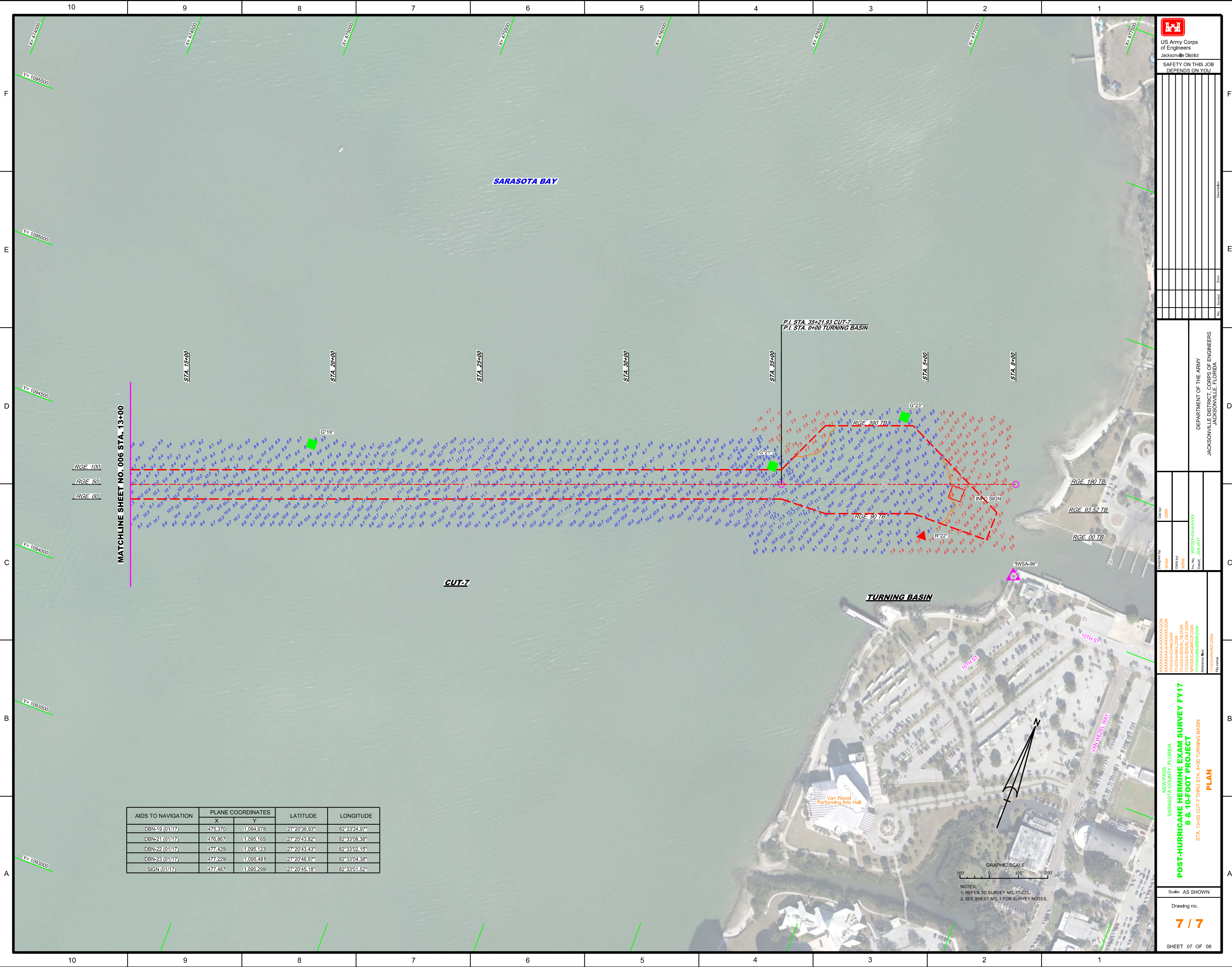
5 / 7

SHEET 05 OF 08



AIDS TO NAVIGATION	PLANE COORDINATES		LATITUDE	LONGITUDE
	X	Y		
LT-16 (01/17)	472.774	1,093,504	27°20'27.19"	82°33'53.73"
DBN-17 (01/17)	472.730	1,093,673	27°20'26.87"	82°33'54.19"
DBN-NP (01/17)	473.861	1,094,050	27°20'32.65"	82°33'41.67"





AIDS TO NAVIGATION	PLANE COORDINATES		LATITUDE	LONGITUDE
	X	Y		
DBN-19 (01/17)	475,370	1,094,678	27°20'38.93"	82°33'24.97"
DBN-21 (01/17)	476,867	1,095,165	27°20'43.82"	82°33'08.38"
DBN-22 (01/17)	477,429	1,095,123	27°20'43.43"	82°33'02.15"
DBN-23 (01/17)	477,229	1,095,481	27°20'46.97"	82°33'04.38"
SIGN (01/17)	477,487	1,095,299	27°20'45.18"	82°33'01.52"

MATCHLINE SHEET NO. 006 STA. 13+00

RGE. 100
RGE. 50
RGE. 00

AIDS TO NAVIGATION	PLANE COORDINATES		LATITUDE	LONGITUDE
	X	Y		
DBN-19 (01/17)	475,370	1,094,678	27°20'38.93"	82°33'24.97"
DBN-21 (01/17)	476,867	1,095,165	27°20'43.82"	82°33'08.38"
DBN-22 (01/17)	477,429	1,095,123	27°20'43.43"	82°33'02.15"
DBN-23 (01/17)	477,229	1,095,481	27°20'46.97"	82°33'04.38"
SIGN (01/17)	477,487	1,095,299	27°20'45.18"	82°33'01.52"

US Army Corps of Engineers
Jacksonville District

SAFETY ON THIS JOB DEPENDS ON YOU

No.	Symbol	Zone	Date	Description	

DEPARTMENT OF THE ARMY
JACKSONVILLE DISTRICT, CORPS OF ENGINEERS
JACKSONVILLE, FLORIDA

Designed by: WRM
Checked by: WRM
Date: JAN 2017

PLAN

7/7

**POST-HURRICANE HERMINE EXAM SURVEY FY17
8 & 10-FOOT PROJECT**

STA. 13+00 CUT-7 THRU STA. 8+00 TURNING BASIN

Scale: AS SHOWN
Drawing no. 7/7
SHEET 07 OF 08

NOTES:
1. REFER TO SURVEY NO. 17-033.
2. SEE SHEET NO. 1 FOR SURVEY NOTES.

GRAPHIC SCALE
100' 0 100' 200'

