

ANCLOTE RIVER PASCO COUNTY, FLORIDA POST-HURRICANE HERMINE EXAMINATION SURVEY FY17 9-FOOT PROJECT

SURVEY NOTES

- REFER TO SURVEY NO. 17-029. DATA FOR CUTS 1, 2 AND THE TURNING BASIN WERE COLLECTED DURING SURVEY 16-185.
- DEPTHS DEPICTED BY THIS SURVEY ARE REFERENCED TO MLLW, TIDAL EPOCH 1983-2001 AS REPORTED BY THE NATIONAL OCEANIC AND ATMOSPHERIC ADMINISTRATION (NOAA). NOAA'S VDATUM MODEL WAS USED AND CALIBRATED TO THE PUBLISHED MLLW HEIGHTS OF THE BENCHMARKS ASSOCIATED WITH THE TIDE GAGE SITES SPECIFIED BELOW:

NOAA TIDAL STATION "LEISNER" (PID: AL6628)
- TIDAL REDUCTIONS WERE OBTAINED UTILIZING A REAL-TIME KINEMATIC (RTK) GPS AND REFERENCED TO MLLW UTILIZING A HYPACK KINEMATIC TIDE DATUM (KTD) MODEL. FILE NAME IS: "SPC-FL-WEST-2010-12-07.KTD".
- ALL ELEVATIONS ARE BELOW THE CHART DATUM UNLESS PRECEDED BY A (+) SIGN.
- PLANE COORDINATES ARE BASED ON THE TRANSVERSE MERCATOR PROJECTION FOR THE WEST ZONE OF FLORIDA AND REFERENCED TO NORTH AMERICAN DATUM OF 1983 (NAD83).
- ALL STATIONING REFERS TO THE CENTERLINE OF THE CHANNEL.
- THIS SURVEY WAS PERFORMED USING REAL-TIME KINEMATIC (RTK) GPS POSITIONING WITH THE FOLLOWING REFERENCE BASE LOCATIONS:

REFERENCE BASE LOCATED AT "PCDSM GPS 80" (PID: DF5855)
- VERTICAL MEASUREMENTS WERE MADE USING A ROSS MODEL 835C DUAL-FREQUENCY SMARTSOUNDER WITH A 28/200 KHZ SINGLE-BEAM TRANSDUCER AND AN EDGETECH MODEL 8205 COMBINED MULTIBEAM AND SIDESCAN. ALL SOUNDINGS SHOWN ARE IN HIGH FREQUENCY.

VESSEL	DATE OF SURVEY	CUT
SB-48	28 SEP 2016	CUTS 1 & 2
SB-48	29 SEP 2016	CUT-2
SB-48	30 SEP 2016	TURNING BASIN
SB-48	08 NOV 2016	CUTS 3 THRU 5
SB-48	09 NOV 2016	CUTS 6 THRU 14
- AIDS TO NAVIGATION WERE LOCATED DURING THIS SURVEY.
- THE INFORMATION DEPICTED ON THIS MAP REPRESENTS THE RESULTS OF SURVEYS MADE ON THE DATES INDICATED ABOVE AND CAN ONLY BE CONSIDERED AS INDICATING THE GENERAL CONDITIONS AT THAT TIME. THIS CHART IS SOLELY FOR THE DISTRIBUTION OF AVAILABLE DEPTHS AT THE TIME OF THE SURVEY.
- SURVEY ACCURACY PERFORMANCE STANDARDS, QUALITY CONTROL, AND QUALITY ASSURANCE REQUIREMENTS WERE FOLLOWED DURING THIS SURVEY IN ACCORDANCE WITH USACE EM 1110-2-1063, HYDROGRAPHIC SURVEYING, 30 NOV 13.

LEGEND	
	MONUMENT
	LIGHTED BEACON
	GREEN DAYBEACON
	RED DAYBEACON
	RED LIGHTED BUOY
	GREEN LIGHTED BUOY
	CAN BUOY
	NUN BUOY
	TIDE STAFF
	PROJECT DEPTH

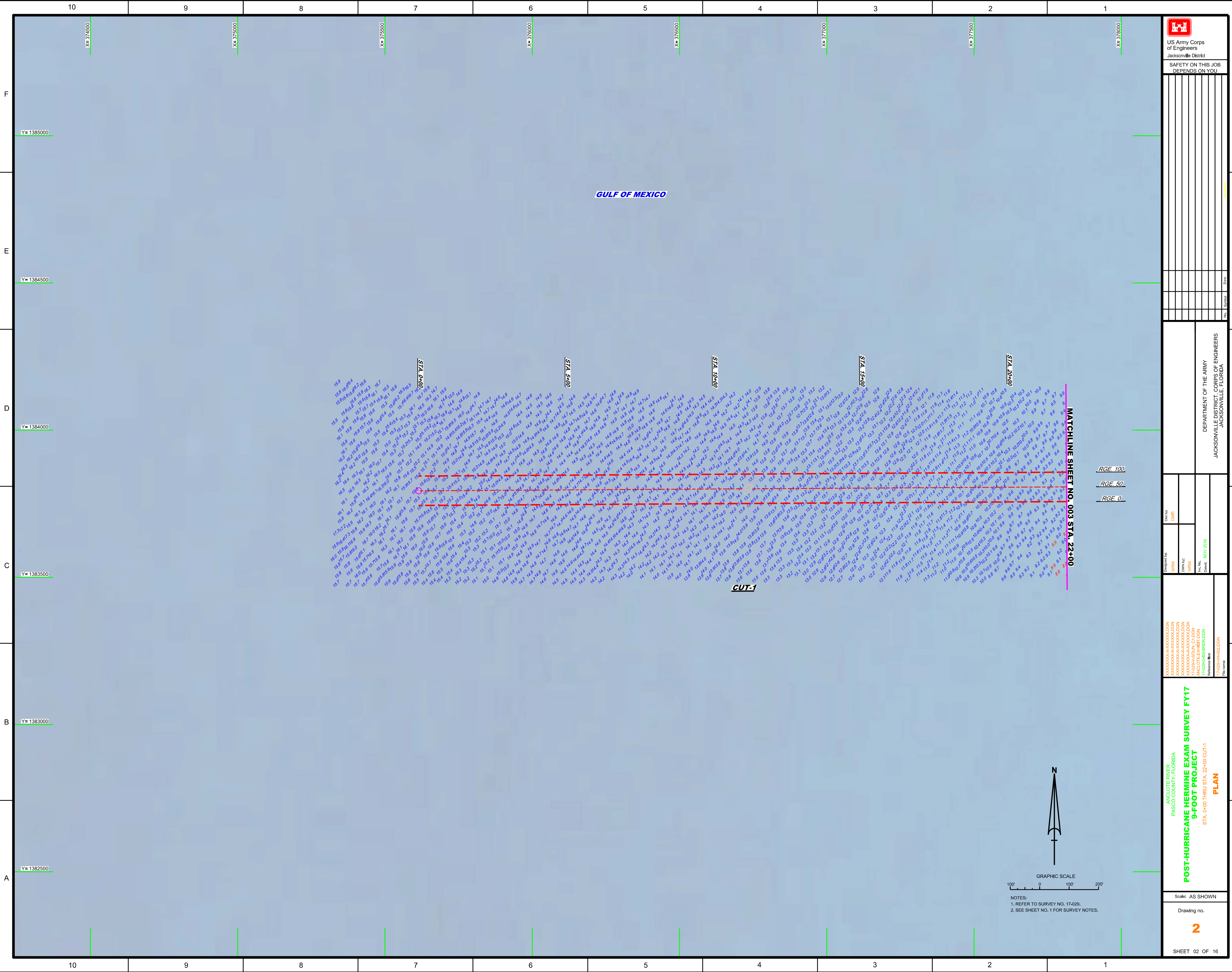
US Army Corps of Engineers
Jacksonville District
SAFETY ON THIS JOB
DEPENDS ON YOU

DEPARTMENT OF THE ARMY
JACKSONVILLE DISTRICT, CORPS OF ENGINEERS
JACKSONVILLE, FLORIDA

Designed by: WRM
Checked by: GHR
Drawn by: WRM
File Name: ANCLOTE EXAM 17-029-9-FOOT.DGN
Date: NOV 2016

ANCLOTE RIVER
PASCO COUNTY, FLORIDA
POST-HURRICANE HERMINE EXAM SURVEY FY17
9-FOOT PROJECT
INDEX, LOCATION AND VICINITY
MAP

Scale: AS SHOWN
Drawing no. 1
SHEET 01 OF 16

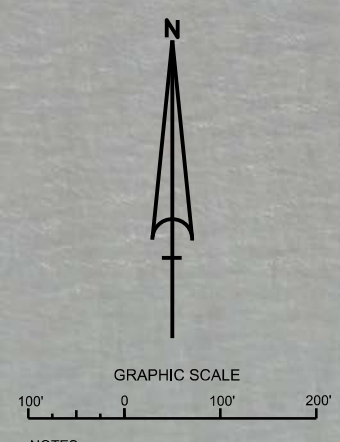
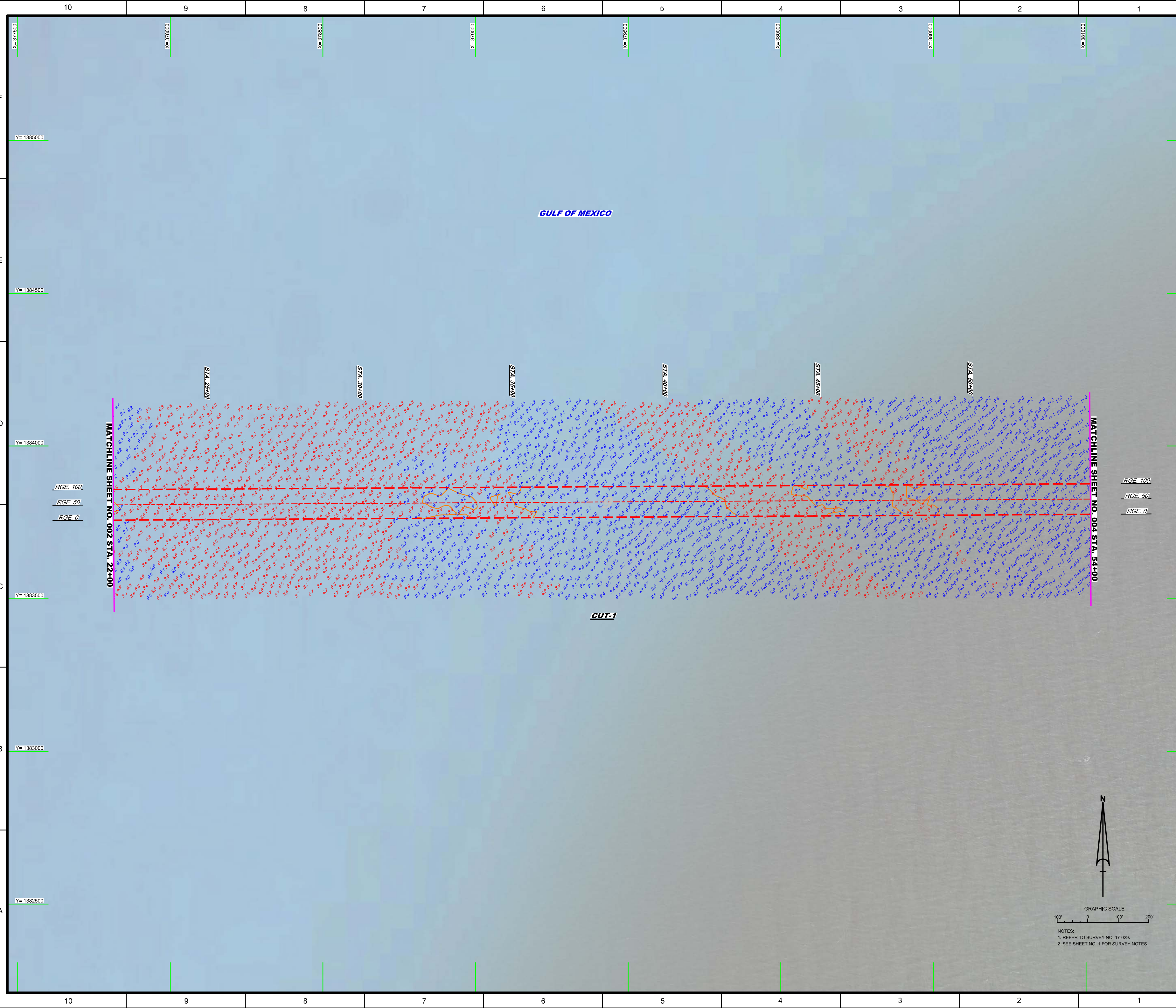


US Army Corps of Engineers Jacksonville District SAFETY ON THIS JOB DEPENDS ON YOU	
	DEPARTMENT OF THE ARMY JACKSONVILLE DISTRICT CORPS OF ENGINEERS JACKSONVILLE, FLORIDA
Designed by: WRM JPM	Checked by: GHR JPM
Date: 17-OCT-2016	Date: NOV 2016
ANGLICOTE RIVER PASCO COUNTY, FLORIDA POST-HURRICANE HERMINE EXAM SURVEY FY17 9-FOOT PROJECT STA. 0+00 THRU STA. 22+00 CUT-1 PLAN	
Scale: AS SHOWN Drawing no. 2	
SHEET 02 OF 16	

RGE 100
RGE 50
RGE 0

GRAPHIC SCALE
100' 0 100' 200'

NOTES:
1. REFER TO SURVEY NO. 17-029.
2. SEE SHEET NO. 1 FOR SURVEY NOTES.



NOTES:
 1. REFER TO SURVEY NO. 17-029.
 2. SEE SHEET NO. 1 FOR SURVEY NOTES.

AIDS TO NAVIGATION	PLANE COORDINATES		LATITUDE	LONGITUDE
	X	Y		
LT (09/16)	382,872	1,383,982	28°08'18.31"	82°50'52.77"



US Army Corps
of Engineers
Jacksonville District

SAFETY ON THIS JOB
DEPENDS ON YOU

DEPARTMENT OF THE ARMY
JACKSONVILLE DISTRICT, CORPS OF ENGINEERS
JACKSONVILLE, FLORIDA

Checked by: GHR
Designed by: WRM
Drawn by: WRM
Plot Date: NOV 2018
Reference File: 17-029-1704-00

XXXXXXXXXXXXXXXXXXXX
XXXXXXXXXXXXXXXXXXXX
17-029-1704-00.DWG
17-029-1704-00.DWG
17-029-1704-00.DWG
17-029-1704-00.DWG
17-029-1704-00.DWG
Reference File: 17-029-1704-00
File Name:

ANGLOTE RIVER
PASCO COUNTY, FLORIDA
POST-HURRICANE HERMINE EXAM SURVEY FY17
9-FOOT PROJECT
STA. 54+00 CUT-1 THRU STA. 21+00 CUT-2
PLAN

Scale: AS SHOWN

Drawing no.

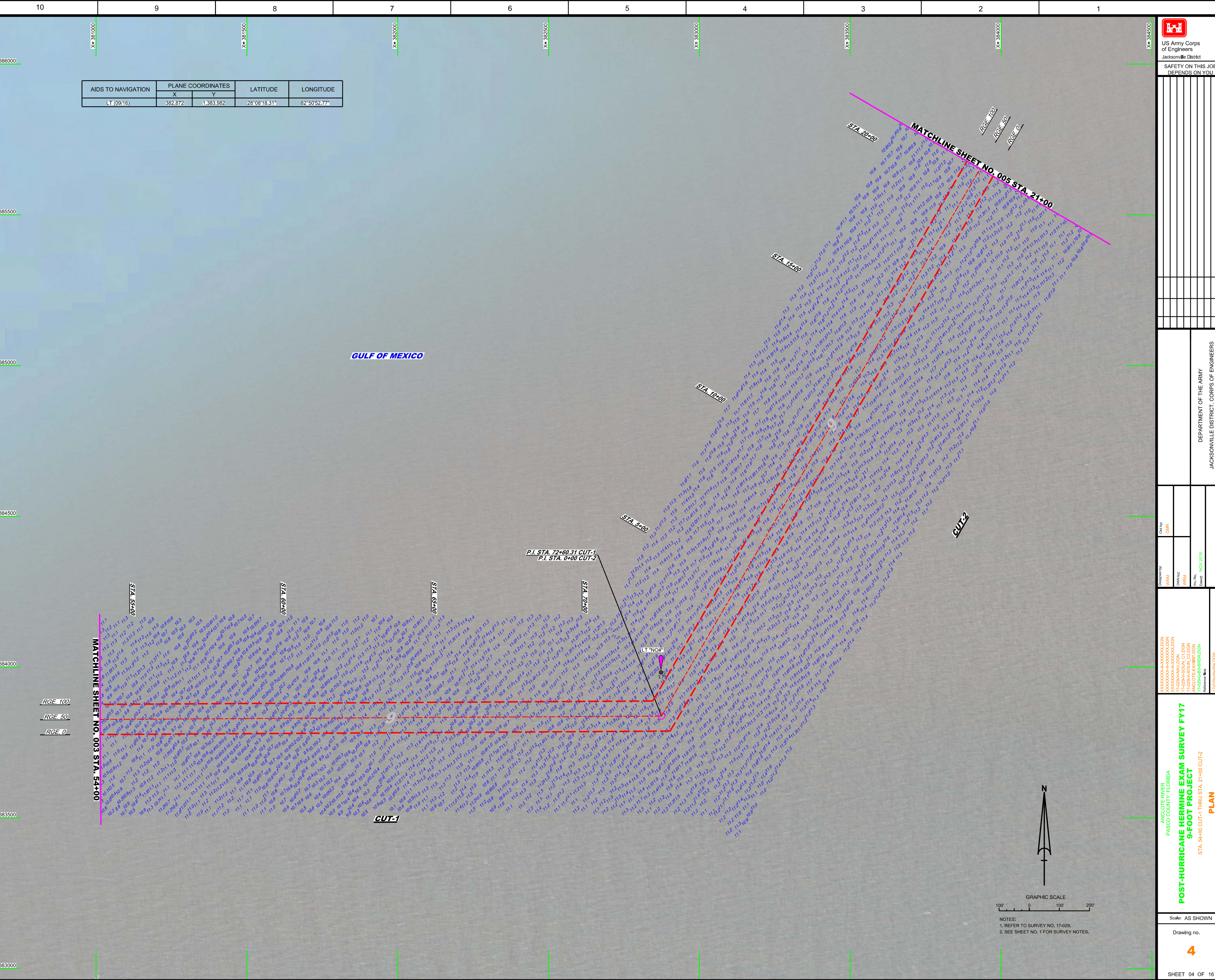
4

SHEET 04 OF 16

GULF OF MEXICO

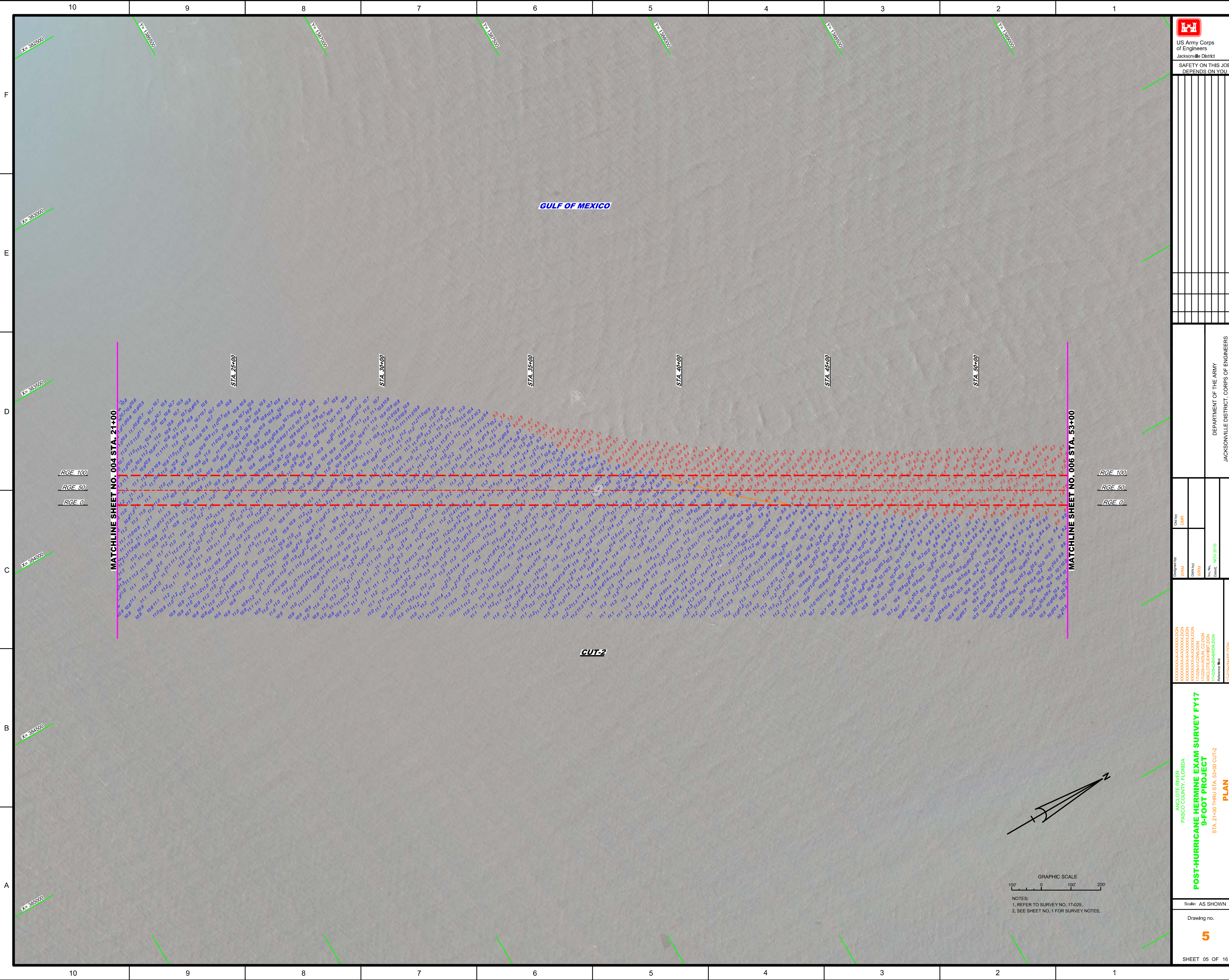
MATCHLINE SHEET NO. 005 STA. 21+00

MATCHLINE SHEET NO. 003 STA. 54+00



GRAPHIC SCALE
100' 0 100' 200'

NOTES:
1. REFER TO SURVEY NO. 17-029.
2. SEE SHEET NO. 1 FOR SURVEY NOTES.



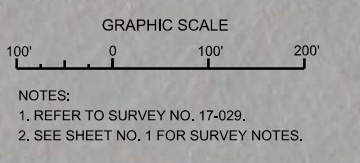
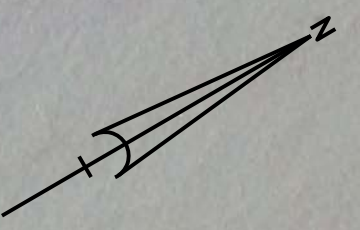
Checked by: GHR
Designed by: WRM
Drawn by: WRM
Date: NOV 2016

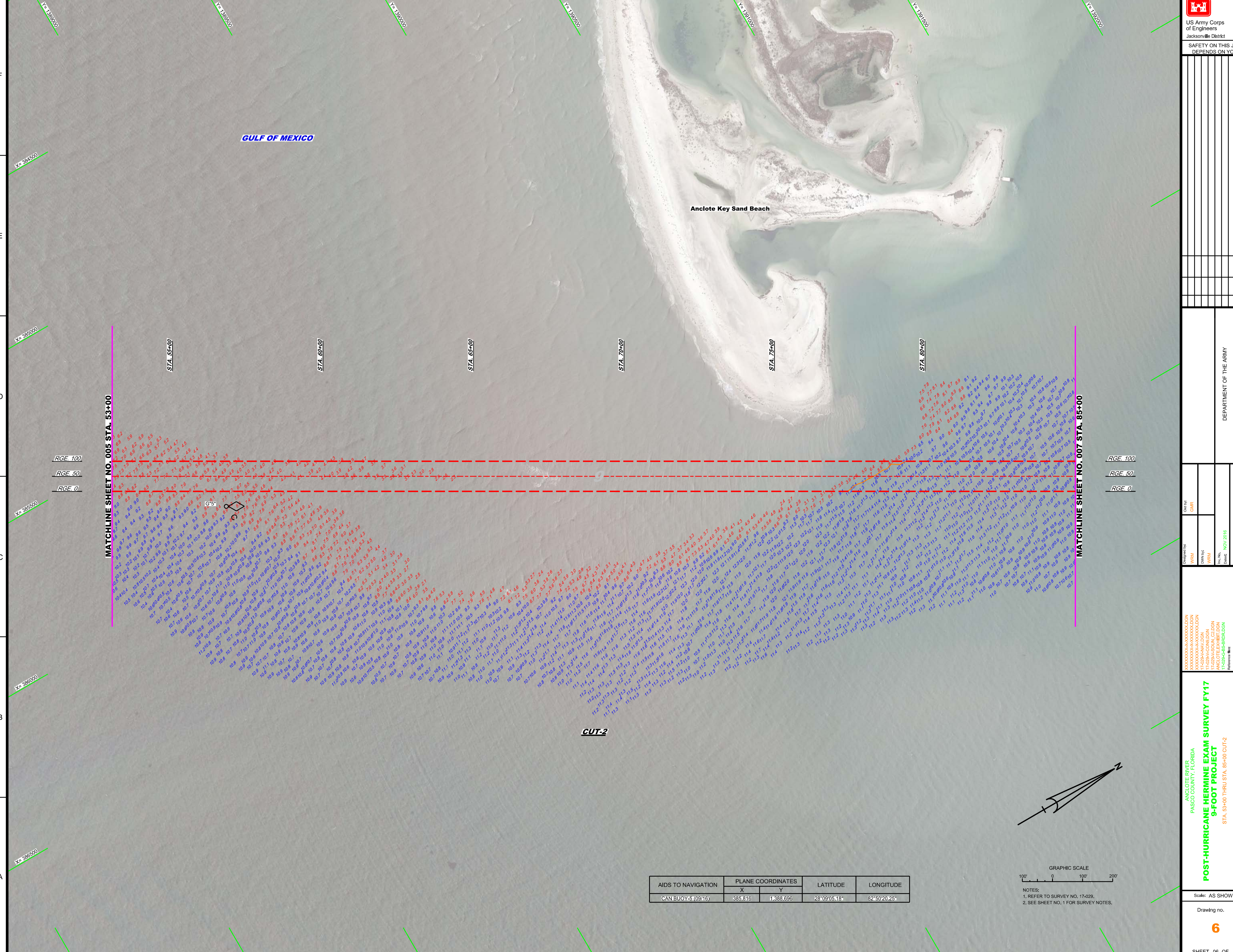
XXXXXXXXXXXXXXXXXXXX
XXXXXXXXXXXXXXXXXXXX
XXXXXXXXXXXXXXXXXXXX
XXXXXXXXXXXXXXXXXXXX
XXXXXXXXXXXXXXXXXXXX
XXXXXXXXXXXXXXXXXXXX
XXXXXXXXXXXXXXXXXXXX
XXXXXXXXXXXXXXXXXXXX
XXXXXXXXXXXXXXXXXXXX
XXXXXXXXXXXXXXXXXXXX

ANGLOTE RIVER
PASCO COUNTY, FLORIDA
POST-HURRICANE HERMINE EXAM SURVEY FY17
9-FOOT PROJECT
STA. 21+00 THRU STA. 53+00 CUT-2
PLAN

Scale: AS SHOWN

Drawing no.
5





US Army Corps
of Engineers
Jacksonville District

**SAFETY ON THIS JOB
DEPENDS ON YOU**

DEPARTMENT OF THE ARMY
JACKSONVILLE DISTRICT, CORPS OF ENGINEERS
JACKSONVILLE, FLORIDA

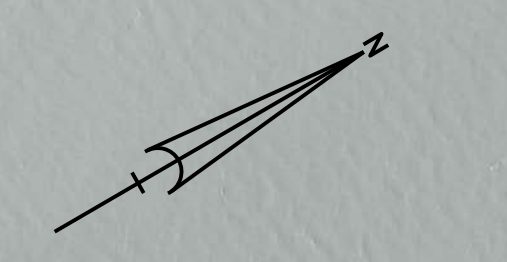
Matchline SHEET NO. 005 STA. 53+00 | MATCHLINE SHEET NO. 007 STA. 85+00
 RGE. 100 | RGE. 50 | RGE. 0
 X= 388500 | Y= 183600

AIDS TO NAVIGATION		PLANE COORDINATES		LATITUDE	LONGITUDE
		X	Y		
CAN BUOY-S (09/16)		385.816	1,388.696	28°09'05.18"	82°50'20.25"

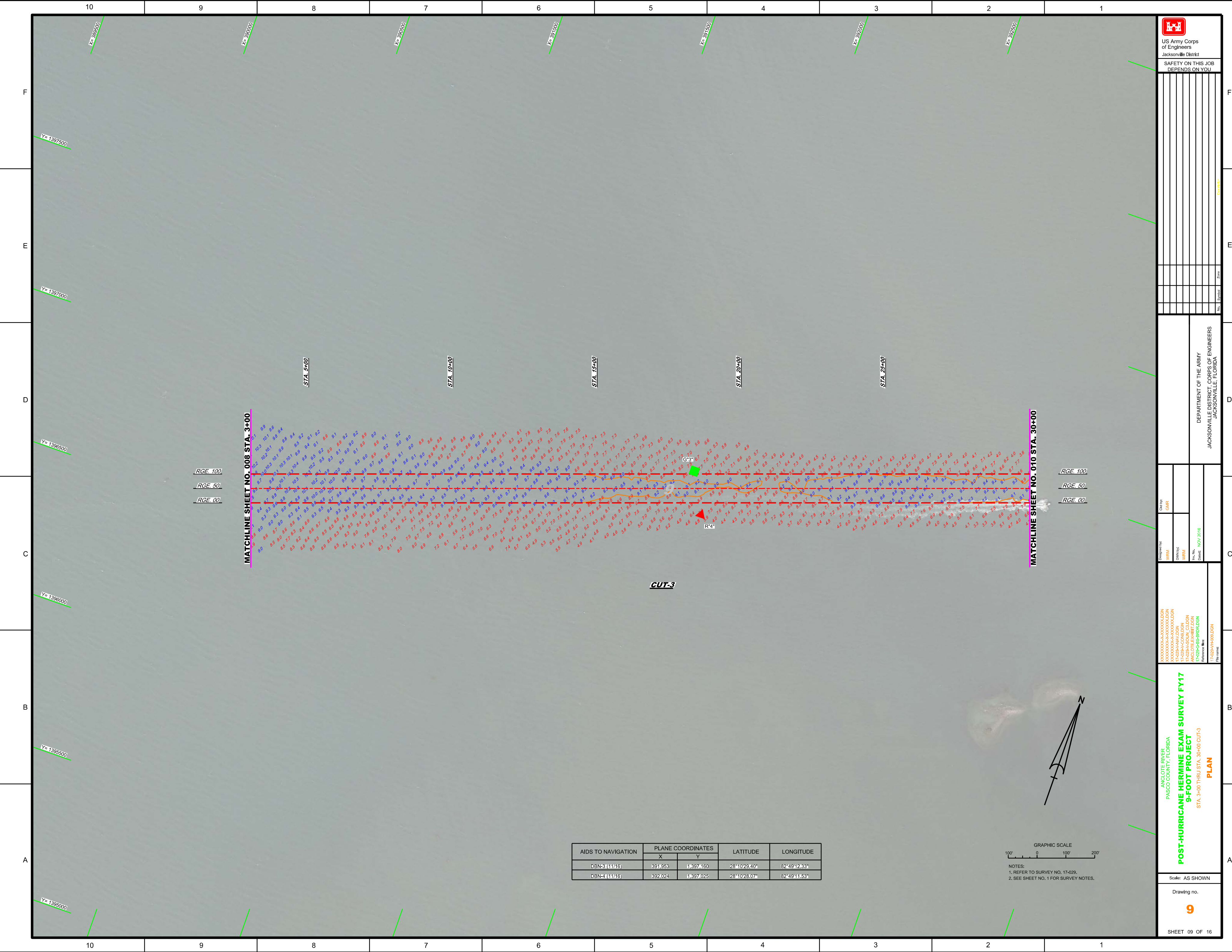
POST-HURRICANE HERMINE EXAM SURVEY FY17
9-FOOT PROJECT
 STA. 53+00 THRU STA. 85+00 CUT-2
PLAN


Anclote River
 Pasco County, Florida
 POST-HURRICANE HERMINE EXAM SURVEY FY17
 9-FOOT PROJECT
 STA. 53+00 THRU STA. 85+00 CUT-2
PLAN

Scale: AS SHOWN
 Drawing no. **6**
 SHEET 06 OF 16



NOTES:
 1. REFER TO SURVEY NO. 17-029.
 2. SEE SHEET NO. 1 FOR SURVEY NOTES.




 US Army Corps of Engineers
 Jacksonville District
 SAFETY ON THIS JOB
 DEPENDS ON YOU

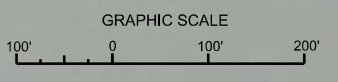
DEPARTMENT OF THE ARMY
 JACKSONVILLE DISTRICT, CORPS OF ENGINEERS
 JACKSONVILLE, FLORIDA

Drawn by: WRM
 Check by: GHR
 Date: NOV 2016

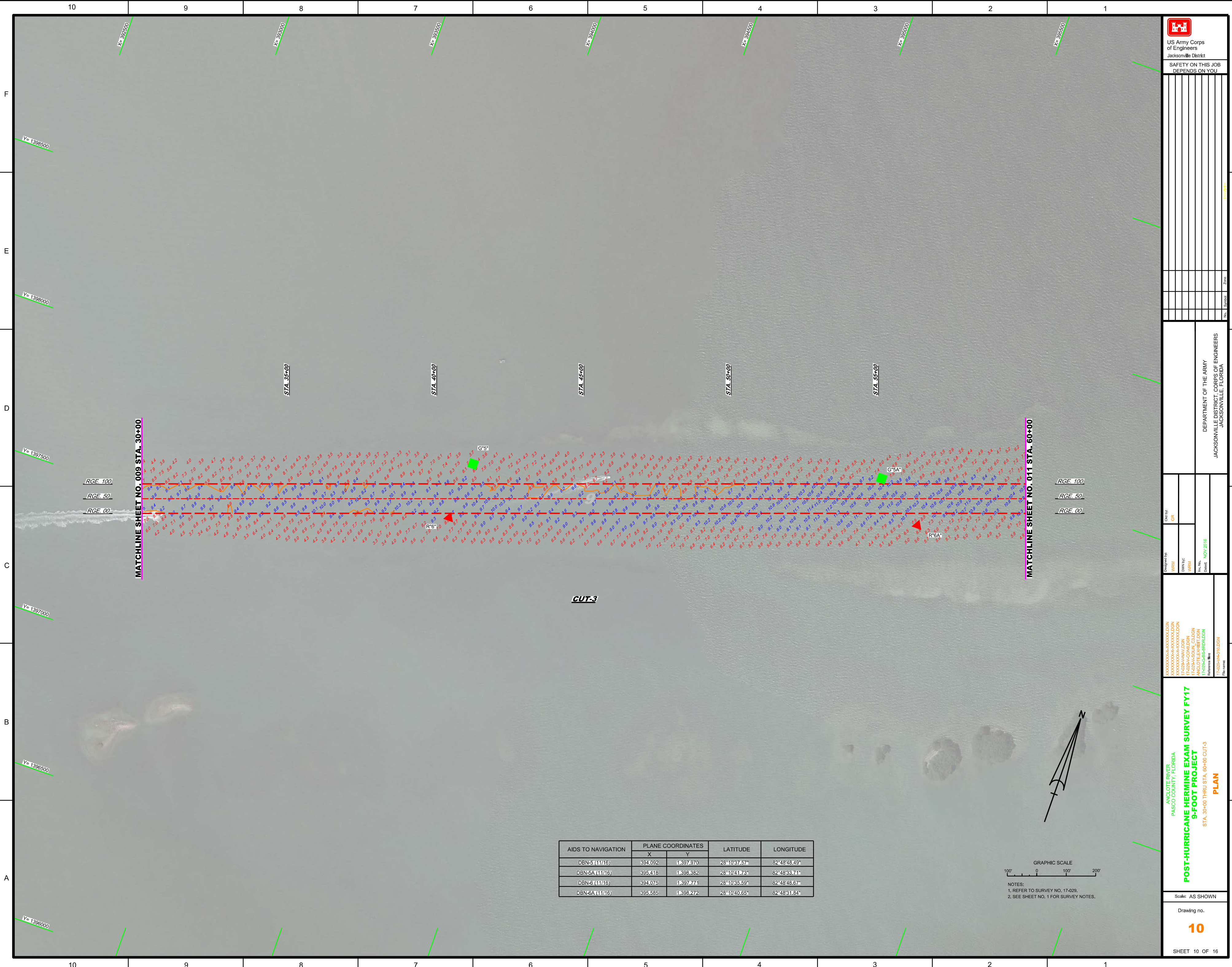
ANGLICOTE RIVER
 PASCO COUNTY, FLORIDA
POST-HURRICANE HERMINE EXAM SURVEY FY17
9-FOOT PROJECT
 STA. 3+00 THRU STA. 30+00 CUT-3
PLAN

Scale: AS SHOWN
 Drawing no. **9**
 SHEET 09 OF 16

AIDS TO NAVIGATION	PLANE COORDINATES		LATITUDE	LONGITUDE
	X	Y		
DBN-3 (11/16)	391.953	1,397,160	28°10'29.40"	82°49'12.33"
DBN-4 (11/16)	392.024	1,397,025	28°10'28.07"	82°49'11.53"



NOTES:
 1. REFER TO SURVEY NO. 17-029.
 2. SEE SHEET NO. 1 FOR SURVEY NOTES.



US Army Corps of Engineers
Jacksonville District
SAFETY ON THIS JOB DEPENDS ON YOU

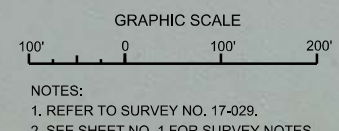
Rev.	By	Date	Description

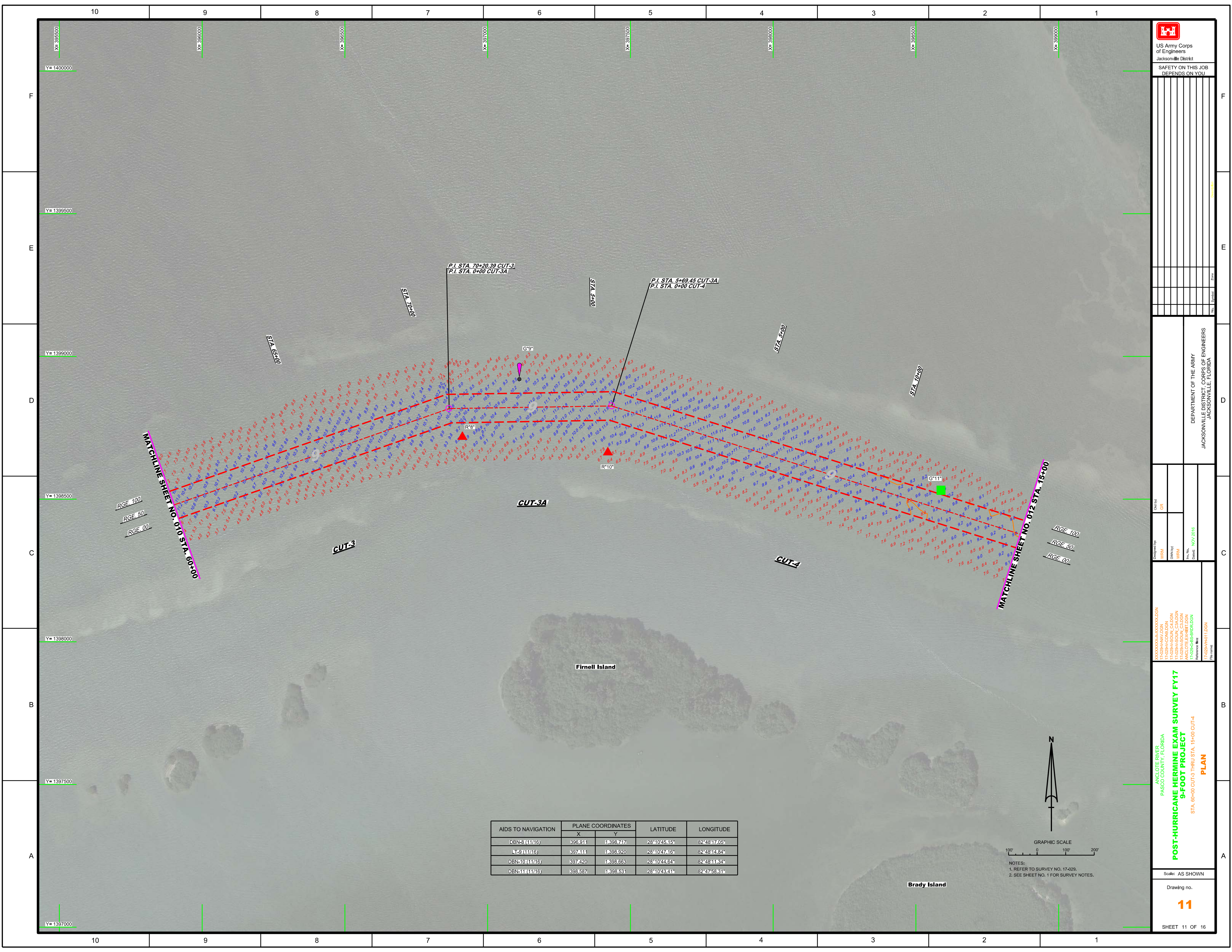
DEPARTMENT OF THE ARMY
JACKSONVILLE DISTRICT, CORPS OF ENGINEERS
JACKSONVILLE, FLORIDA

Designed by WRM	Check by GRL
Drawn by WRM	
Date NOV 2018	

ANGLOTE RIVER
PASCO COUNTY, FLORIDA
POST-HURRICANE HERMINE EXAM SURVEY FY17
9-FOOT PROJECT
STA. 39+00 THRU STA. 60+00 CUT-3
PLAN

AIDS TO NAVIGATION	PLANE COORDINATES		LATITUDE	LONGITUDE
	X	Y		
DBN-5 (11/16)	394,082	1,397,970	28°10'37.57"	82°48'48.49"
DBN-5A (11/16)	395,418	1,398,382	28°10'41.73"	82°48'33.71"
DBN-5 (11/16)	394,075	1,397,774	28°10'35.59"	82°48'48.67"
DBN-5A (11/16)	395,585	1,398,272	28°10'40.65"	82°48'31.84"





US Army Corps of Engineers
Jacksonville District
SAFETY ON THIS JOB
DEPENDS ON YOU

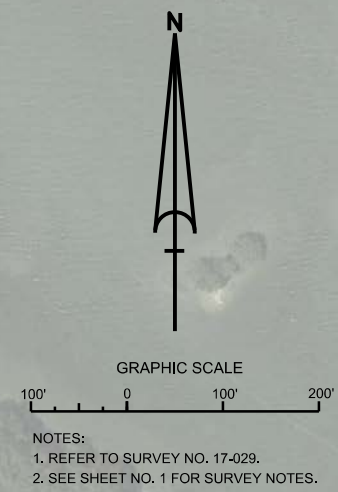
DEPARTMENT OF THE ARMY
JACKSONVILLE DISTRICT, CORPS OF ENGINEERS
JACKSONVILLE, FLORIDA

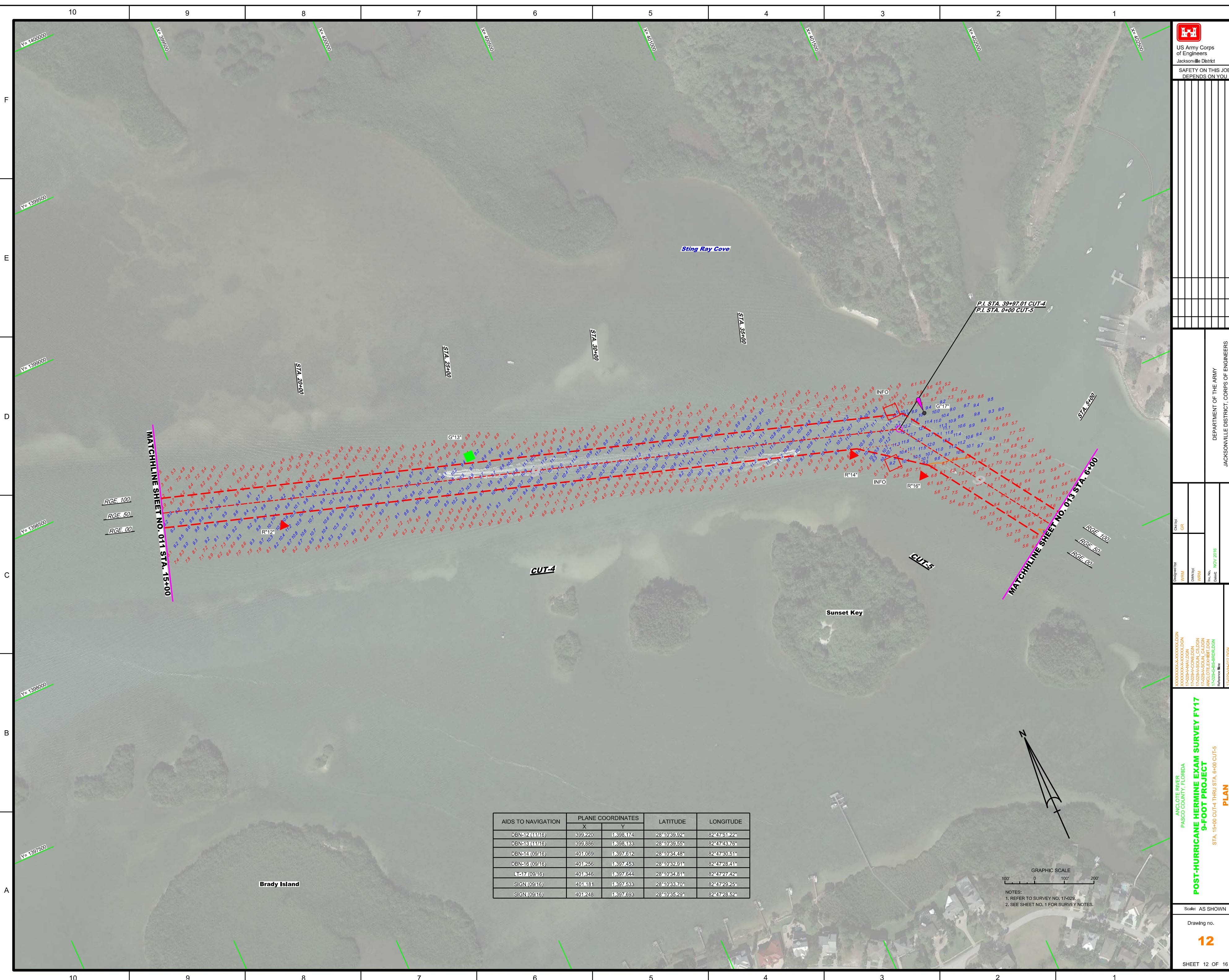
Designed by: WRM
Checked by: GRL
Drawn by: WRM
File No.: 17-0226-00-000000000000
Date: NOV 2016

ANGLICOTE RIVER
PASCO COUNTY, FLORIDA
POST-HURRICANE HERMINE EXAM SURVEY FY17
9-FOOT PROJECT
STA. 60+00 CUT-3 THRU STA. 15+00 CUT-4
PLAN

Scale: AS SHOWN
Drawing no.
11
SHEET 11 OF 16

AIDS TO NAVIGATION	PLANE COORDINATES		LATITUDE	LONGITUDE
	X	Y		
DBN-8 (11/16)	396.911	1398.717	28°10'45.15"	82°48'17.05"
DBN-9 (11/16)	397.411	1398.920	28°10'47.61"	82°48'14.84"
DBN-10 (11/16)	397.420	1398.663	28°10'44.64"	82°48'11.34"
DBN-11 (11/16)	398.537	1398.531	28°10'43.41"	82°47'58.31"





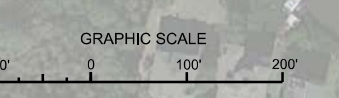
DEPARTMENT OF THE ARMY
JACKSONVILLE DISTRICT, CORPS OF ENGINEERS
JACKSONVILLE, FLORIDA

XXXXXXXXXXXXXXXXXXXX
XXXXXXXXXXXXXXXXXXXX
XXXXXXXXXXXXXXXXXXXX
XXXXXXXXXXXXXXXXXXXX
XXXXXXXXXXXXXXXXXXXX
XXXXXXXXXXXXXXXXXXXX
XXXXXXXXXXXXXXXXXXXX
XXXXXXXXXXXXXXXXXXXX

**POST-HURRICANE HERMINE EXAM SURVEY FY17
9-FOOT PROJECT
PLAN**

ANGLOTE RIVER
PASCO COUNTY, FLORIDA
STA. 15+00 CUT-4 THRU STA. 6+00 CUT-5

AIDS TO NAVIGATION	PLANE COORDINATES		LATITUDE	LONGITUDE
	X	Y		
DBN-12 (11/16)	399.220	11398.174	28°10'39.92"	82°47'51.22"
DBN-13 (11/16)	399.886	11398.133	28°10'39.55"	82°47'48.76"
DBN-14 (09/16)	401.069	11397.612	28°10'34.48"	82°47'30.51"
DBN-16 (09/16)	401.256	11397.453	28°10'32.91"	82°47'28.41"
LT-17 (09/16)	401.346	11397.644	28°10'34.81"	82°47'27.42"
SIGN (09/16)	401.181	11397.533	28°10'33.70"	82°47'29.25"
SIGN (09/16)	401.248	11397.593	28°10'35.28"	82°47'28.52"



NOTES:
1. REFER TO SURVEY NO. 17-029.
2. SEE SHEET NO. 1 FOR SURVEY NOTES.

US Army Corps of Engineers
Jacksonville District

SAFETY ON THIS JOB DEPENDS ON YOU

DEPARTMENT OF THE ARMY
JACKSONVILLE DISTRICT, CORPS OF ENGINEERS
JACKSONVILLE, FLORIDA

Check By: GRL
Designed By: WRM
Drawn By: WRM
File No: 17-0229-01-010
Date: NOV 2018

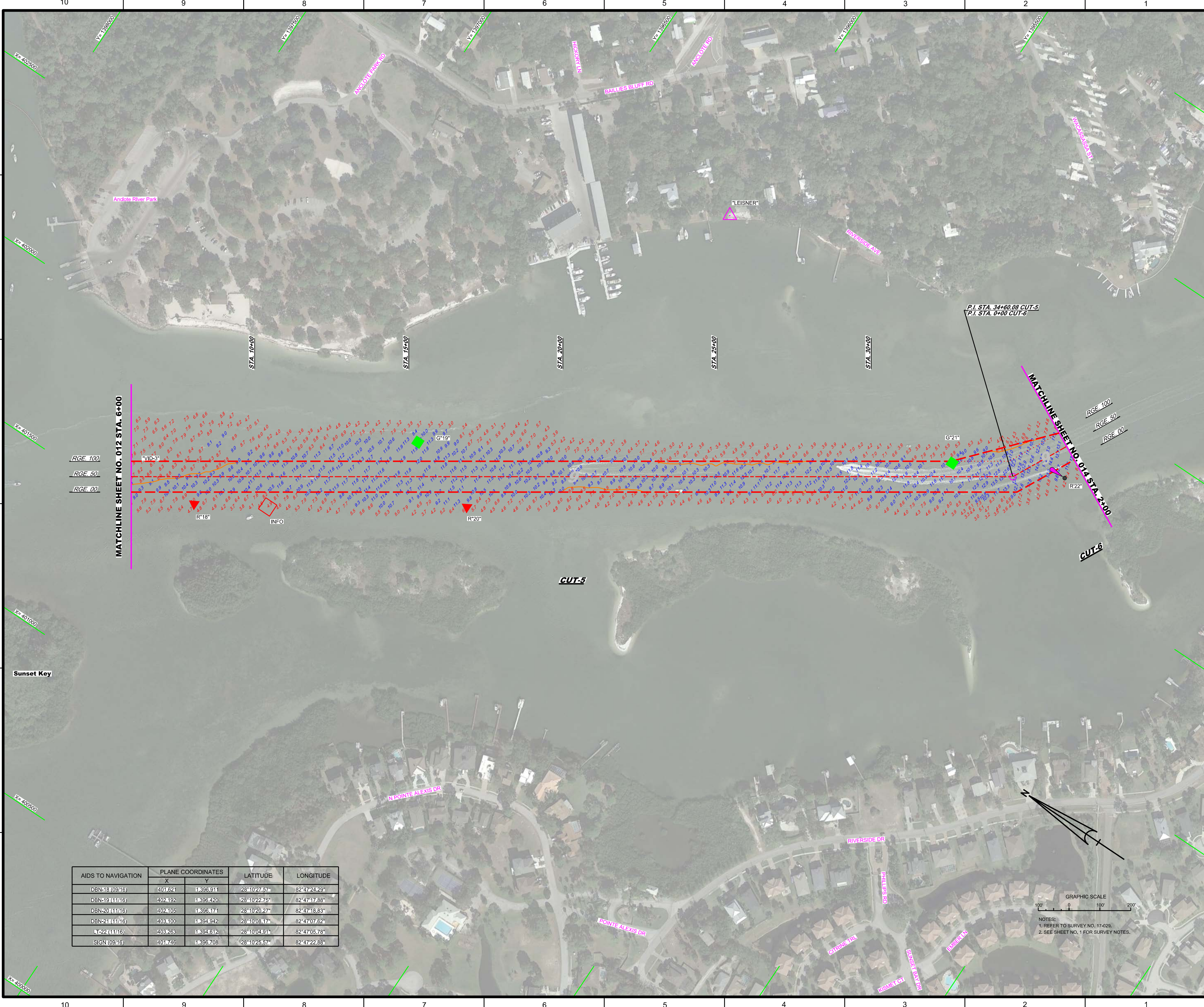
XXXXXXXXXXXXXXXXXXXX.DGN
XXXXXXXXXXXXXXXXXXXX.DGN
17-0229-01-010.DGN
17-0229-01-010.DGN
ANGLCOTE EXHIBIT.DGN
17-0229-01-010.DGN
Reference File: 17-0229-01-010.DGN
File Name:

ANGLCOTE RIVER
PASCO COUNTY, FLORIDA

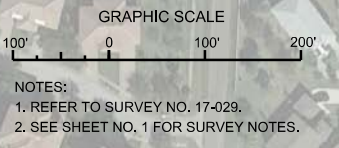
POST-HURRICANE HERMINE EXAM SURVEY FY17
9-FOOT PROJECT
STA. 6+00 CUT-5 THRU STA. 2+00 CUT-6

PLAN

Scale: AS SHOWN
Drawing no.
13
SHEET 13 OF 16



AIDS TO NAVIGATION	PLANE COORDINATES		LATITUDE	LONGITUDE
	X	Y		
DBN16(0916)	401.021	11390.911	28°10'27.57"	82°47'24.28"
DBN19(1116)	402.182	11395.420	28°10'22.75"	82°47'17.86"
DBN20(1116)	402.105	11395.171	28°10'20.27"	82°47'18.83"
DBN21(1116)	403.100	11394.942	28°10'08.17"	82°47'07.62"
17-0229(1116)	403.268	11394.612	28°10'04.91"	82°47'05.78"
SIGN(0916)	401.746	11395.708	28°10'25.57"	82°47'22.85"



MATCHLINE SHEET NO. 012 STA. 6+00

MATCHLINE SHEET NO. 014 STA. 2+00

P.I. STA. 34+60.08 CUT-5
P.I. STA. 0+00 CUT-6

RGE. 100
RGE. 50
RGE. 00

RGE. 100
RGE. 50
RGE. 00

Sta. 10+00 Sta. 15+00 Sta. 20+00 Sta. 25+00 Sta. 30+00

CUT-5

CUT-6

R*18°

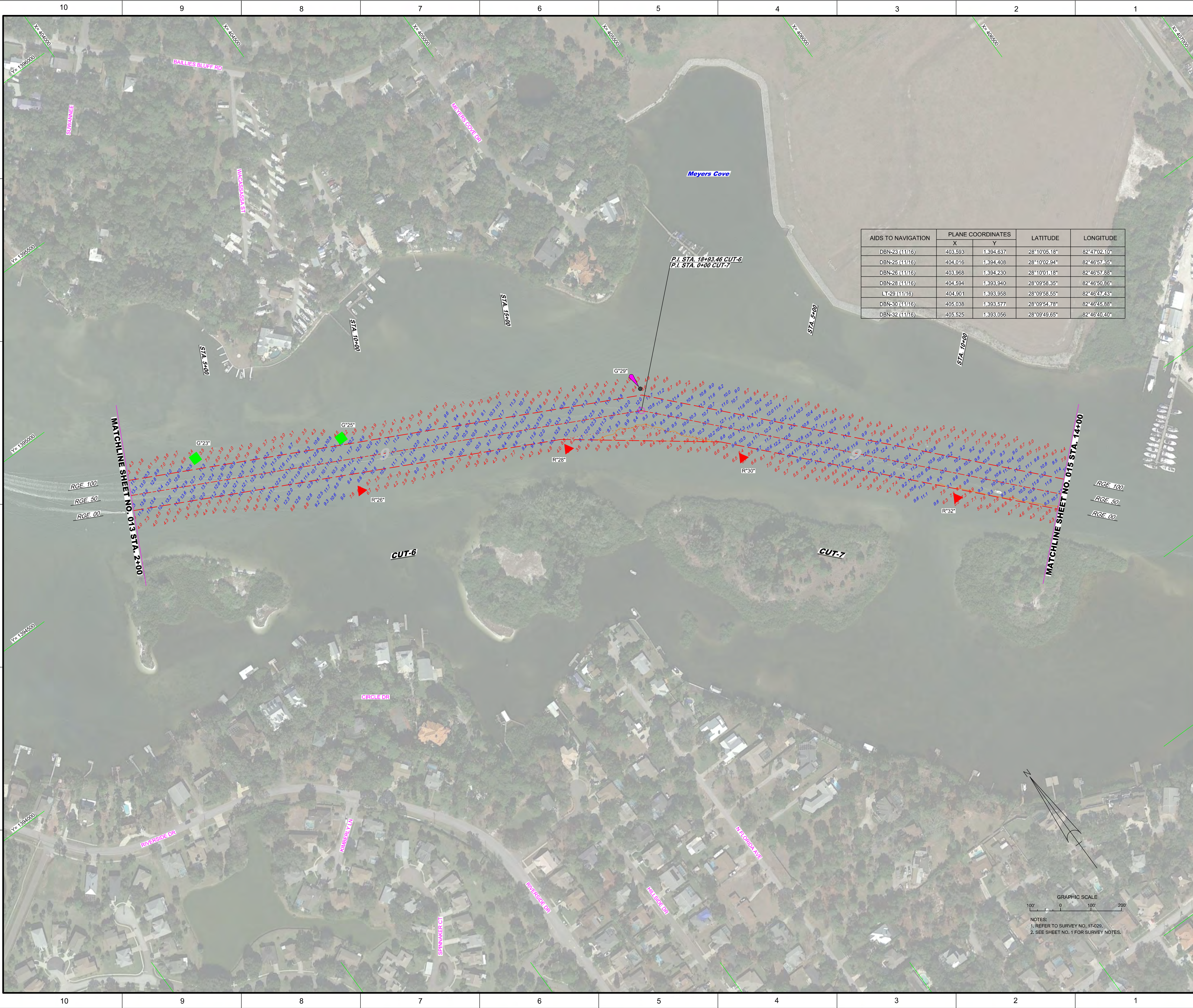
INFO

R*20°

G*21°

R*22°





AIDS TO NAVIGATION	PLANE COORDINATES		LATITUDE	LONGITUDE
	X	Y		
DBN-23 (11/16)	403,593	1,394,637	28°10'05.18"	82°47'02.10"
DBN-25 (11/16)	404,016	1,394,408	28°10'02.94"	82°46'57.35"
DBN-26 (11/16)	403,968	1,394,230	28°10'01.18"	82°46'57.88"
DBN-28 (11/16)	404,594	1,393,940	28°09'58.35"	82°46'50.86"
LT-29 (11/16)	404,901	1,393,958	28°09'58.55"	82°46'47.43"
DBN-30 (11/16)	405,038	1,393,577	28°09'54.78"	82°46'45.88"
DBN-32 (11/16)	405,525	1,393,056	28°09'49.65"	82°46'40.40"

US Army Corps of Engineers
Jacksonville District
SAFETY ON THIS JOB
DEPENDS ON YOU

DEPARTMENT OF THE ARMY
JACKSONVILLE DISTRICT, CORPS OF ENGINEERS
JACKSONVILLE, FLORIDA

Drawn by: GRL
Designed by: WRM
DWG PLOT: WRM
File No.: 17-029-6-BS-RR14.DGN
Date: NOV 2016

XXXXXXXXXXXXXXXXXXXX
XXXXXXXXXXXXXXXXXXXX
XXXXXXXXXXXXXXXXXXXX
17-029-6-BS-RR14.DGN
17-029-6-BS-RR14.DGN
17-029-6-BS-RR14.DGN
17-029-6-BS-RR14.DGN
17-029-6-BS-RR14.DGN
Reference files:
17-029-6-RR14.DGN

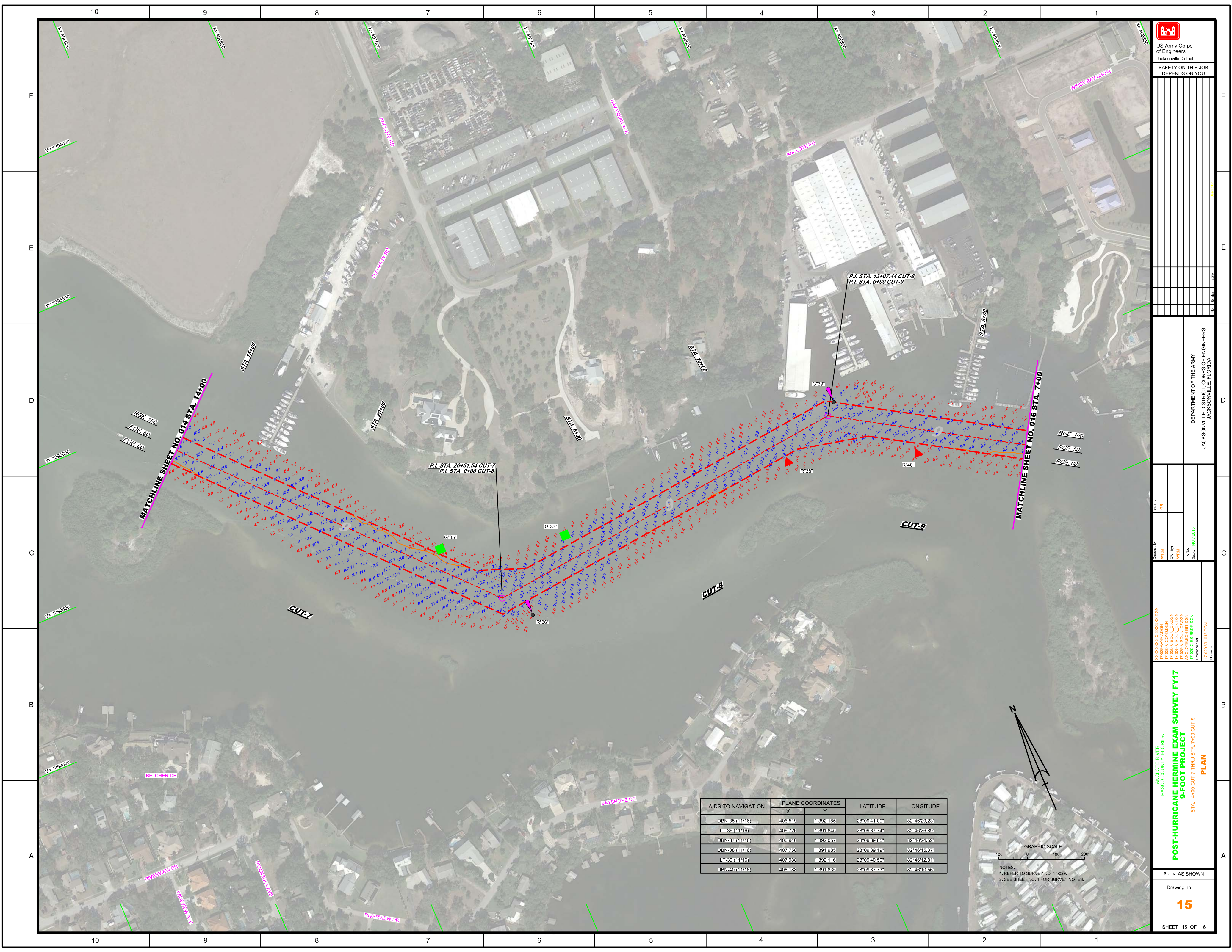
POST-HURRICANE HERMINE EXAM SURVEY FY17
9-FOOT PROJECT
STA. 2+00 CUT-6 THRU STA. 14+00 CUT-7
PLAN

Scale: AS SHOWN
Drawing no.
14

SHEET 14 OF 16

GRAPHIC SCALE
100' 0 100' 200'

NOTES:
1. REFER TO SURVEY NO. 17-029.
2. SEE SHEET NO. 1 FOR SURVEY NOTES.



US Army Corps of Engineers
 Jacksonville District
 SAFETY ON THIS JOB
 DEPENDS ON YOU

DEPARTMENT OF THE ARMY
 JACKSONVILLE DISTRICT, CORPS OF ENGINEERS
 JACKSONVILLE, FLORIDA

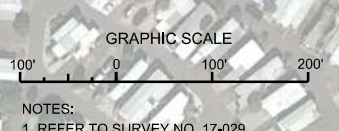
Call by: GRL
 Designed by: WRM
 Drawn by: WRM
 File No: 17-0229-00-0000-0000
 Date: NOV 2016

Reference Map:
 17-0229-00-0000-0000
 17-0229-00-0000-0000
 17-0229-00-0000-0000
 17-0229-00-0000-0000
 17-0229-00-0000-0000
 17-0229-00-0000-0000

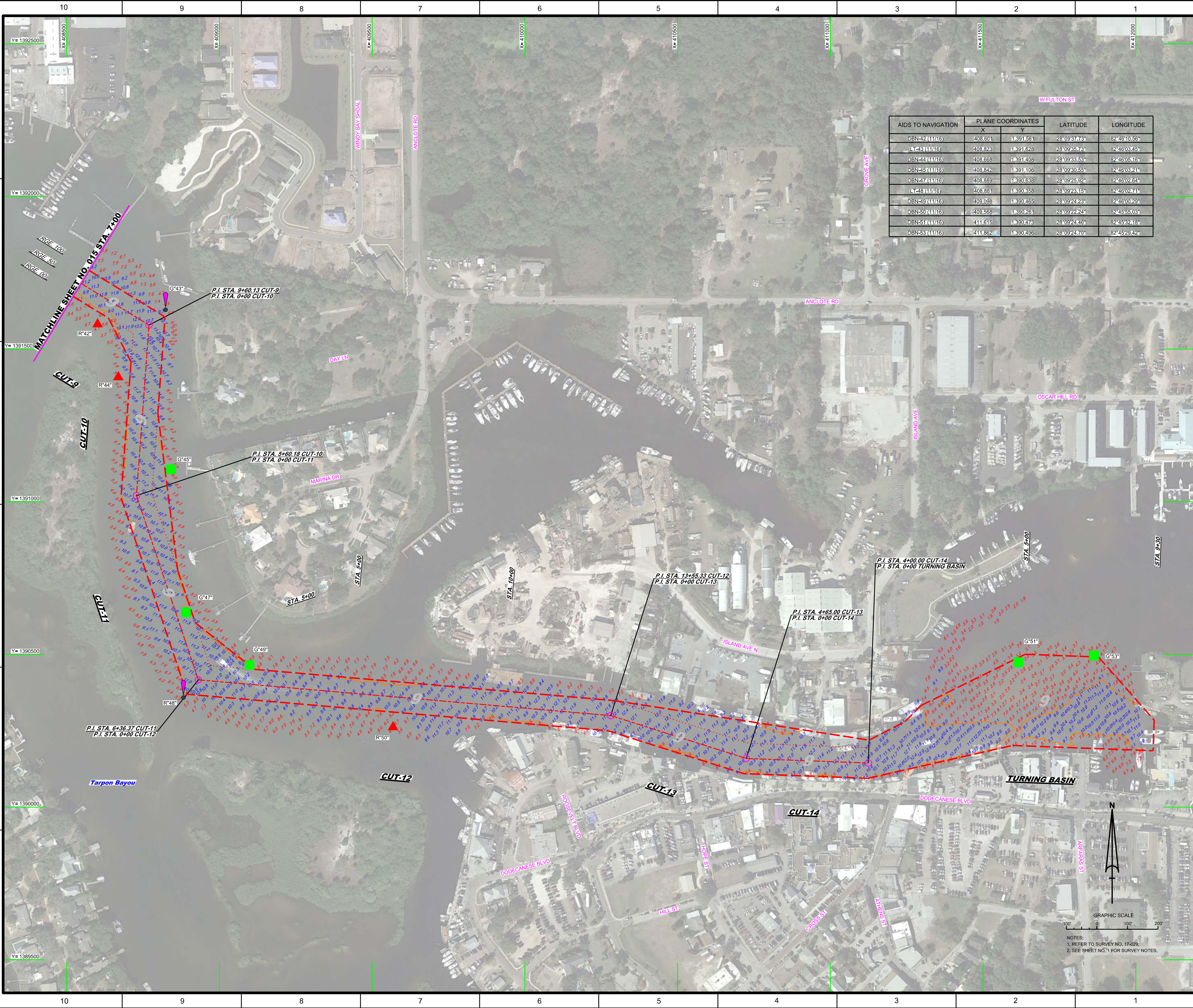
POST-HURRICANE HERMINE EXAM SURVEY FY17
9-FOOT PROJECT
 STA. 14+00 CUT-7 THRU STA. 7+00 CUT-9
PLAN

Scale: AS SHOWN
 Drawing no. **15**
 SHEET 15 OF 16


AIDS TO NAVIGATION	PLANE COORDINATES		LATITUDE	LONGITUDE
	X	Y		
DBN-35 (11/16)	406,519	11,392,185	28°09'41.09"	82°46'29.23"
LT-36 (11/16)	406,726	11,391,845	28°09'37.74"	82°46'26.89"
DBN-37 (11/16)	408,940	11,392,057	28°09'39.85"	82°46'24.52"
DBN-38 (11/16)	407,758	11,391,985	28°09'39.19"	82°46'15.37"
LT-39 (11/16)	407,988	11,392,116	28°09'40.50"	82°46'12.81"
DBN-40 (11/16)	408,188	11,391,835	28°09'37.73"	82°46'10.56"



NOTES:
 1. REFER TO SURVEY NO. 17-029.
 2. SEE SHEET NO. 1 FOR SURVEY NOTES.



AIDS TO NAVIGATION	PLANE COORDINATES		LATITUDE	LONGITUDE
	X	Y		
DBN-42 (11/16)	408.601	11391.581	28°09'37.78"	82°46'10.56"
DBN-43 (11/16)	408.823	11391.628	28°09'35.74"	82°46'08.45"
DBN-44 (11/16)	408.668	11391.408	28°09'33.53"	82°46'05.16"
DBN-45 (11/16)	408.842	11391.106	28°09'30.55"	82°46'03.21"
DBN-47 (11/16)	408.889	11390.638	28°09'25.92"	82°46'02.64"
DBN-48 (11/16)	408.881	11390.658	28°09'23.15"	82°46'02.71"
DBN-49 (11/16)	409.098	11390.465	28°09'24.23"	82°46'00.29"
DBN-50 (11/16)	409.668	11390.261	28°09'22.24"	82°45'55.03"
DBN-51 (11/16)	411.615	11390.473	28°09'24.46"	82°45'52.18"
DBN-53 (11/16)	411.862	11390.456	28°09'24.70"	82°45'29.42"



US Army Corps of Engineers
Jacksonville District

SAFETY ON THIS JOB
DEPENDS ON YOU

DEPARTMENT OF THE ARMY
JACKSONVILLE DISTRICT, CORPS OF ENGINEERS
JACKSONVILLE, FLORIDA

Project: 17-029A-HURM-EXAM
Title: 9-FOOT PROJECT
Date: NOV 2016

POST-HURRICANE HERMINE EXAM SURVEY FY17
9-FOOT PROJECT
PLAN

STA. 7+00 CUT-9 THRU STA. 9+30 TURNING BASIN

Scale: AS SHOWN

Drawing no. **16**

SHEET 16 OF 16

NOTES:
1. REFER TO SURVEY NO. 17-029.
2. SEE SHEET NO. 1 FOR SURVEY NOTES.