

MIAMI RIVER DADE COUNTY, FLORIDA POST-HURRICANE MATTHEW EXAMINATION SURVEY FY17 15-FOOT PROJECT

SURVEY NOTES

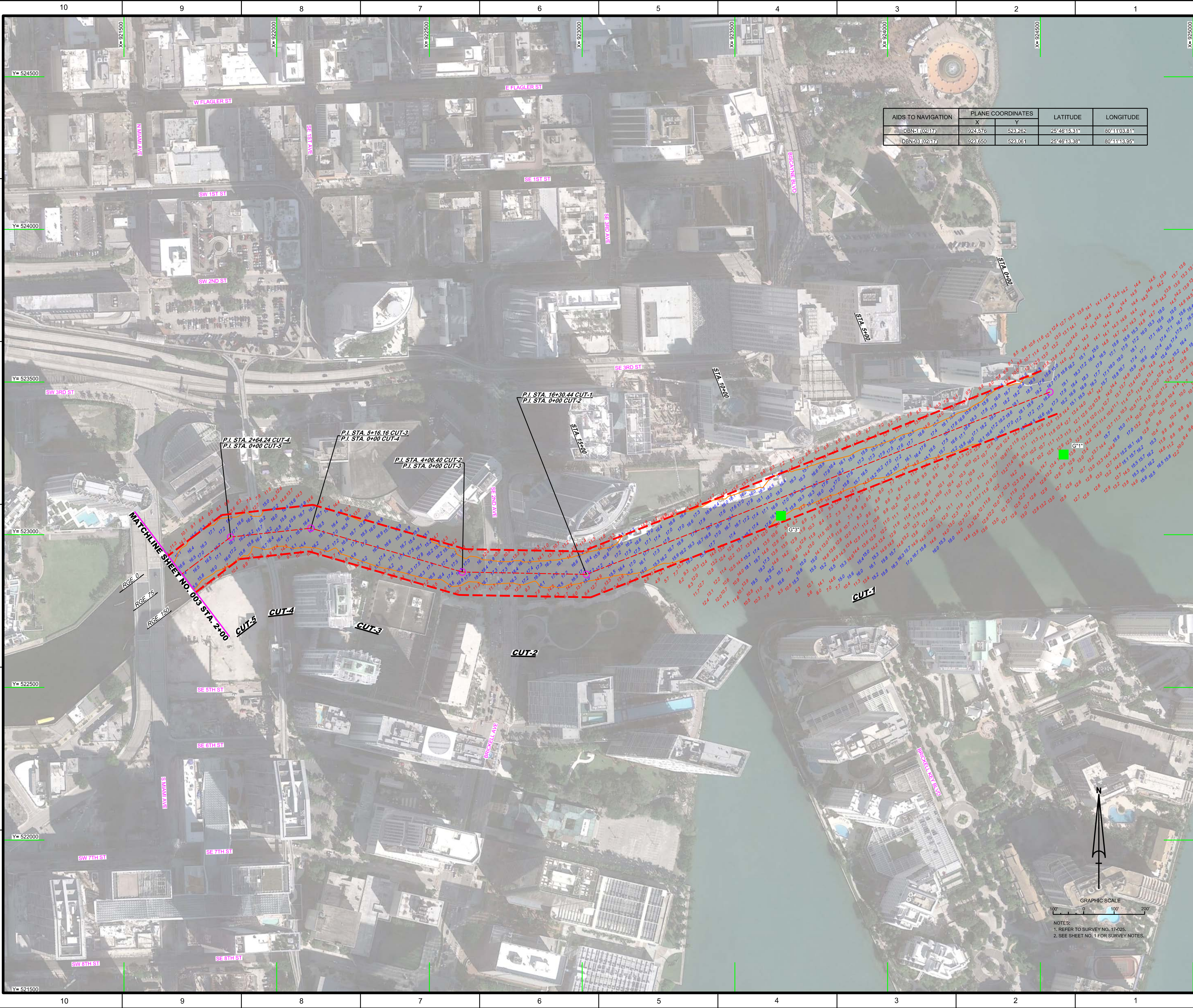
- REFER TO SURVEY NO. 17-025.
 - SOUNDINGS ARE IN FEET AND TENTHS AND REFER TO NOAA'S REPORTED MEAN LOWER LOW WATER (MLLW) OF THE 1983-2001 TIDAL EPOCH.
 - TIDAL REDUCTIONS WERE OBTAINED UTILIZING A REAL-TIME KINEMATIC (RTK) GPS AND REFERENCED TO MLLW UTILIZING A HYPACK KINEMATIC TIDE DATUM (KTD) MODEL. KINEMATIC TIDE DATUM FILE TITLED: "MIAMI-RIVER-03AUG2010.KTD".
 - ALL ELEVATIONS ARE BELOW THE CHART DATUM UNLESS PRECEDED BY A (*) SIGN.
 - PLANE COORDINATES ARE BASED ON THE TRANSVERSE MERCATOR PROJECTION FOR THE EAST ZONE OF FLORIDA AND REFERENCED TO NORTH AMERICAN DATUM OF 1983 (NAD83).
 - ALL STATIONING REFERS TO THE CENTERLINE OF THE CHANNEL.
 - THIS SURVEY WAS PERFORMED USING REAL-TIME KINEMATIC (RTK) GPS WITH THE FOLLOWING REFERENCE BASE LOCATIONS:
REFERENCE BASE LOCATED AT "USCG MIAMI ARP" (PID: BBDD68)
TIDE STAFF LOCATED FROM "MH16 RM 1 1962" (PID: AC2178)
 - DEPTHS DEPICTED BY THIS SURVEY ARE REFERENCED TO MLLW, TIDAL EPOCH 1983-2001, AS REPORTED BY THE NATIONAL OCEANIC AND ATMOSPHERIC ADMINISTRATION (NOAA). A MODIFIED VERSION OF NOAA'S DATUM MODEL WAS USED TO CALIBRATE TO THE PUBLISHED MLLW HEIGHTS OF THE BENCHMARKS BELOW:
NOAA TIDAL STATION "MH 16 RM 1 1962" FOR ALL CUTS (PID: AC2178)
 - VERTICAL MEASUREMENTS WERE MADE USING AN EDGETECH 6205 COMBINED MULTIBEAM AND SIDESCAN TRANSDUCER AND A ROSS 835 SMARTSOUNDER DUAL-FREQUENCY 28/200 KHZ SINGLE-BEAM TRANSDUCER. ALL SOUNDINGS SHOWN ARE IN HIGH FREQUENCY.
- | VESSEL | DATE OF SURVEY | CUTS |
|--------|----------------|----------|
| SB-48 | 22 FEB 2017 | ALL CUTS |
- AIDS TO NAVIGATION WERE LOCATED DURING THIS SURVEY.
 - THE INFORMATION DEPICTED ON THIS MAP REPRESENTS THE RESULTS OF SURVEYS MADE ON THE DATES INDICATED ABOVE AND CAN ONLY BE CONSIDERED AS INDICATING THE GENERAL CONDITIONS AT THAT TIME. THIS CHART IS SOLELY FOR THE DISTRIBUTION OF AVAILABLE DEPTHS AT THE TIME OF THE SURVEY.
 - SURVEY ACCURACY PERFORMANCE STANDARDS, QUALITY CONTROL, AND QUALITY ASSURANCE REQUIREMENTS WERE FOLLOWED DURING THIS SURVEY IN ACCORDANCE WITH USACE EM 1110-2-1003, HYDROGRAPHIC SURVEYING, 30 NOV 2013.

LEGEND	
	MONUMENT
	LIGHTED BEACON
	GREEN DAYBEACON
	RED DAYBEACON
	RED LIGHTED BUOY
	GREEN LIGHTED BUOY
	CAN BUOY
	NUN BUOY
	TIDE STAFF
	PROJECT DEPTH

US Army Corps of Engineers
Jacksonville District

SAFETY ON THIS JOB
DEPENDS ON YOU

<p>DEPARTMENT OF THE ARMY JACKSONVILLE DISTRICT, CORPS OF ENGINEERS JACKSONVILLE, FLORIDA</p>	<p>MIAMI RIVER DADE COUNTY, FLORIDA POST-HURRICANE MATTHEW EXAM SURVEY FY17 15-FOOT PROJECT INDEX, LOCATION AND VICINITY MAP</p>	<p>Scale: AS SHOWN</p> <p>Drawing no. 1</p>	<p>SHEET 01 OF 11</p>	<p>FILE NAME: 17-025-01-0101.DGN</p>



AIDS TO NAVIGATION	PLANE COORDINATES		LATITUDE	LONGITUDE
	X	Y		
DBN-1 (02/17)	924,576	523,262	25°46'15.51"	80°11'03.81"
DBN-03 (02/17)	923,650	523,061	25°46'13.38"	80°11'13.95"

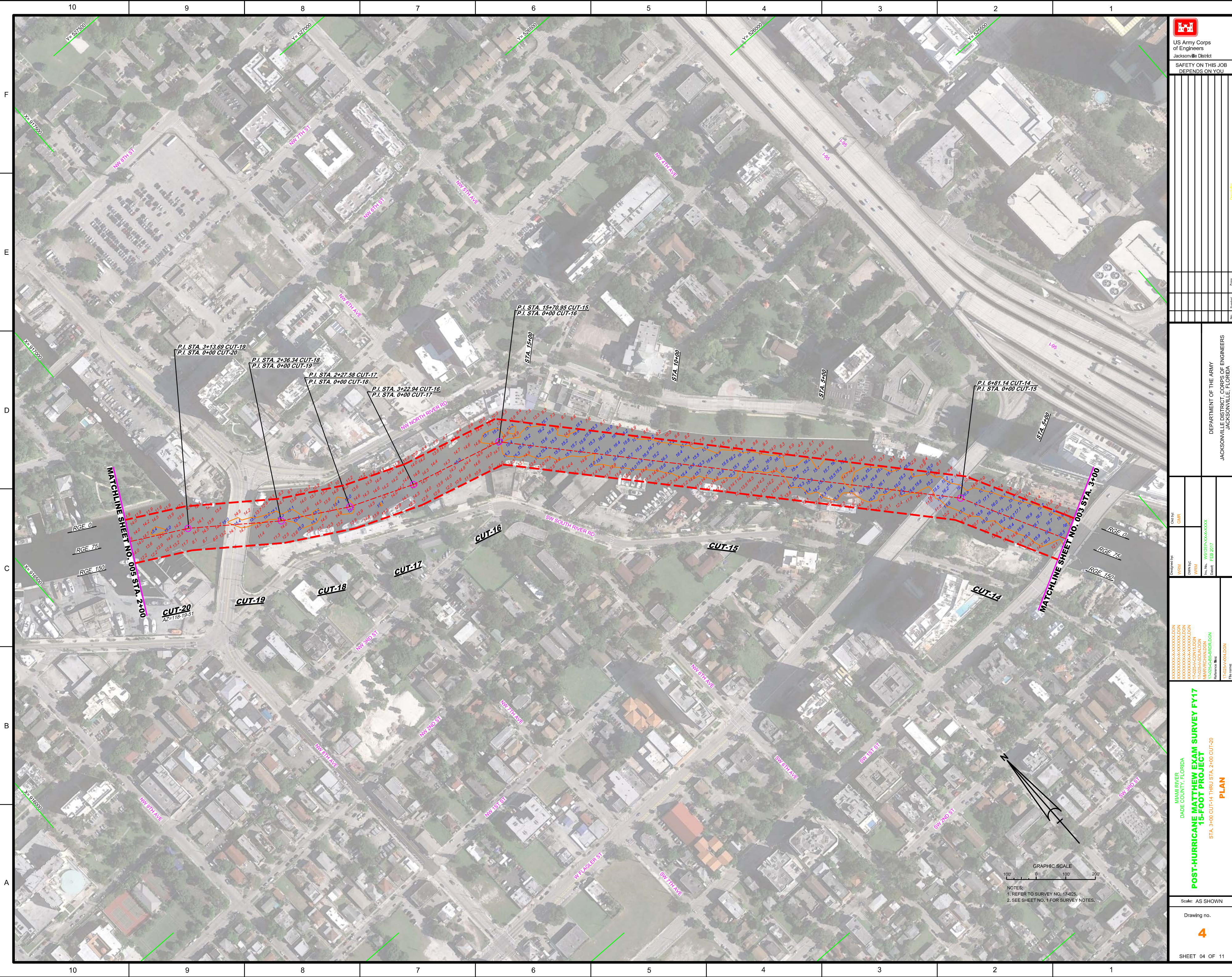
US Army Corps of Engineers
 Jacksonville District
SAFETY ON THIS JOB DEPENDS ON YOU

DEPARTMENT OF THE ARMY
 JACKSONVILLE DISTRICT, CORPS OF ENGINEERS
 JACKSONVILLE, FLORIDA

Drawn by: GHR
 Checked by: GHR
 Date: FEB 2017

POST-HURRICANE MATTHEW EXAM SURVEY FY17
15-FOOT PROJECT
 STA. 0+00 CUT-1 THRU STA. 2+00 CUT-5
PLAN

Scale: AS SHOWN
 Drawing no. **2**
 SHEET 02 OF 11



US Army Corps of Engineers
Jacksonville District
**SAFETY ON THIS JOB
DEPENDS ON YOU**

DEPARTMENT OF THE ARMY
JACKSONVILLE DISTRICT, CORPS OF ENGINEERS
JACKSONVILLE, FLORIDA

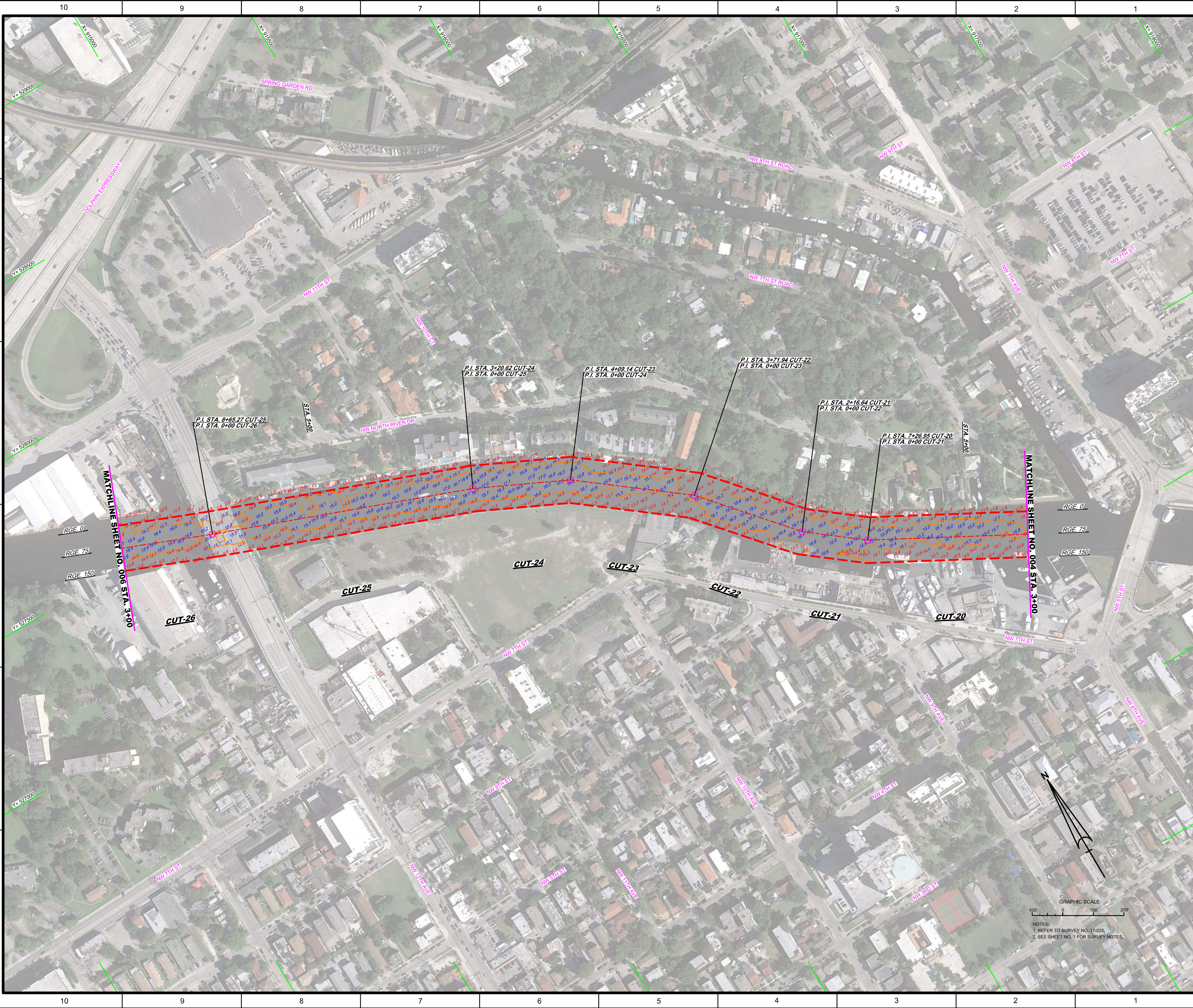
Checked By:	GHR
Designed By:	WRM
Drawn By:	WRM
File No.:	17-025-04-04.DGN
Project Name:	MARYRICANDSON
Reference Block:	17-025-04-04.DGN
File Name:	17-025-04-04.DGN

POST-HURRICANE MATTHEW EXAM SURVEY FY17
15-FOOT PROJECT
STA. 3+00 CUT-14 THRU STA. 2+00 CUT-20

Scale: AS SHOWN
Drawing no. **4**
SHEET 04 OF 11

GRAPHIC SCALE
100' 0' 100' 200'

NOTES:
1. REFER TO SURVEY NO. 17-025.
2. SEE SHEET NO. 1 FOR SURVEY NOTES.



Designated By: WRM Drawn By: WRM Checked: WRM	Date: 02/20/2017 Project No: 17-025-HQ-CON-15-DGN Revision: 17-025-HQ-CON-15-DGN Reference: 17-025-HQ-CON-15-DGN
--	---

POST-HURRICANE MATTHEW EXAM SURVEY FY17
15-FOOT PROJECT
 STA. 3+00 CUT-20 THRU STA. 3+00 CUT-26
PLAN



NOTES:
 1. REFER TO SURVEY NO. 17-025,
 2. SEE SHEET NO. 1 FOR SURVEY NOTES.

