

## IWW - JACKSONVILLE TO MIAMI CUTS SJ-59 THRU SJ-61 ST JOHNS COUNTY, FL POST-HURRICANE MATTHEW EXAMINATION SURVEY FY17 12-FOOT PROJECT

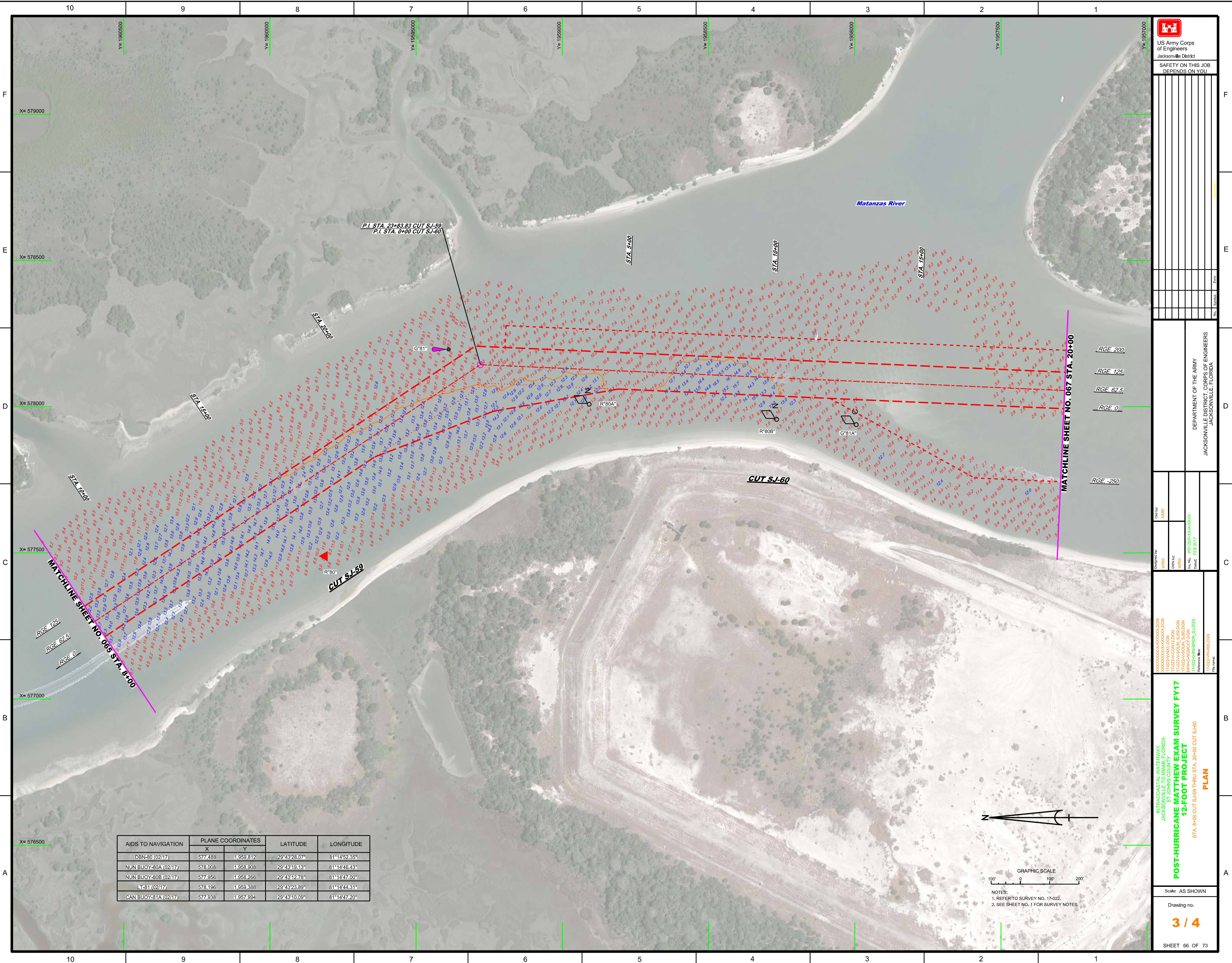
**SURVEY NOTES**

1. REFER TO SURVEY NO. 17-022.
2. SOUNDINGS ARE IN FEET AND TENTHS AND REFER TO NOAA'S REPORTED MEAN LOWER LOW WATER (MLLW) OF THE 1983-2001 TIDAL EPOCH.
3. TIDAL REDUCTIONS WERE OBTAINED UTILIZING A REAL-TIME KINEMATIC (RTK) GPS AND REFERENCED TO MLLW UTILIZING A HYPACK KINEMATIC TIDE DATUM (KTD) MODEL. KTD FILE NAME IS: "CAMDENGA-NASSAU-DUVAL-STJOHNS-FLAGLER-01FEB2011.KTD".
4. ALL ELEVATIONS ARE BELOW THE CHART DATUM UNLESS PRECEDED BY A (+) SIGN.
5. PLANE COORDINATES ARE BASED ON THE TRANSVERSE MERCATOR PROJECTION FOR THE EAST ZONE OF FLORIDA AND REFERENCED TO NORTH AMERICAN DATUM OF 1983 (NAD83).
6. ALL STATIONING REFERS TO THE CENTERLINE OF THE CHANNEL.
7. THIS SURVEY WAS PERFORMED USING REAL-TIME KINEMATIC (RTK) GPS POSITIONING WITH THE FOLLOWING REFERENCE BASE LOCATIONS:  
REFERENCE BASE LOCATED AT "IWSJ-224" (PID: BBCD52)
8. DEPTHS DEPICTED BY THIS SURVEY ARE REFERENCED TO MLLW. TIDAL EPOCH 1983-2001 AS REPORTED BY THE NATIONAL OCEANIC AND ATMOSPHERIC ADMINISTRATION (NOAA). NOAA'S VDATUM MODEL WAS USED AND CALIBRATED TO THE PUBLISHED MLLW HEIGHTS OF THE BENCHMARKS ASSOCIATED WITH THE TIDE GAGE SITES SPECIFIED BELOW:  
NOAA TIDAL STATION 872-0686 TIDAL 1 USED FOR CUTS SJ-59 THRU SJ-61 (PID: AQ1557)
9. AIDS TO NAVIGATION WERE LOCATED DURING THIS SURVEY.
10. THE INFORMATION DEPICTED ON THIS MAP REPRESENTS THE RESULTS OF SURVEYS MADE ON THE DATES INDICATED ABOVE AND CAN ONLY BE CONSIDERED AS INDICATING THE GENERAL CONDITIONS AT THAT TIME. THIS CHART IS SOLELY FOR THE DISTRIBUTION OF AVAILABLE DEPTHS AT THE TIME OF THE SURVEY.
11. SURVEY ACCURACY PERFORMANCE STANDARDS, QUALITY CONTROL, AND QUALITY ASSURANCE REQUIREMENTS WERE FOLLOWED DURING THIS SURVEY IN ACCORDANCE WITH USACE EM 11102-1003, HYDROGRAPHIC SURVEYING, 30 NOV 13.

LEGEND	
	MONUMENT
	LIGHTED BEACON
	GREEN DAY BEACON
	RED DAY BEACON
	RED LIGHTED BUOY
	GREEN LIGHTED BUOY
	CAN BUOY
	NUN BUOY
	TIDE STAFF
	PROJECT DEPTH

 US Army Corps of Engineers Jacksonville District <b>SAFETY ON THIS JOB DEPENDS ON YOU</b>	
DEPARTMENT OF THE ARMY JACKSONVILLE DISTRICT, CORPS OF ENGINEERS JACKSONVILLE, FLORIDA	
Drawn by: <b>WRM</b> Designated by: <b>WRM</b> Date: <b>FEB 2017</b>	Check by: <b>GHR</b> Date: <b>FEB 2017</b>
<b>POST-HURRICANE MATTHEW EXAM SURVEY FY17</b> <b>12-FOOT PROJECT</b> INDEX, LOCATION AND VICINITY MAP	
Scale: AS SHOWN Drawing no. <b>1/4</b>	
SHEET 01 OF 73	






AIDS TO NAVIGATION	PLANE COORDINATES		LATITUDE	LONGITUDE
	X	Y		
DBN-80 (02/17)	577,498	1,959,812	29°43'28.07"	81°14'52.35"
NUN BUOY-80A (02/17)	578,008	1,958,908	29°43'19.13"	81°14'46.43"
NUN BUOY-80B (02/17)	577,956	1,958,266	29°43'12.78"	81°14'47.00"
LT-81 (02/17)	578,196	1,959,388	29°43'23.89"	81°14'44.31"
CAN BUOY-81A (02/17)	577,938	1,957,994	29°43'10.09"	81°14'47.20"



NOTES:  
1. REFER TO SURVEY NO. 17-022.  
2. SEE SHEET NO. 1 FOR SURVEY NOTES.



**US Army Corps of Engineers**  
Jacksonville District

**SAFETY ON THIS JOB  
DEPENDS ON YOU**

DEPARTMENT OF THE ARMY  
JACKSONVILLE DISTRICT, CORPS OF ENGINEERS  
JACKSONVILLE, FLORIDA

Checked by: GHR  
Designed by: WRM  
Drawn by: WRM  
Title: MATTHEW EXAM SURVEY  
Date: FEB 2017

INTRACOASTAL WATERWAY  
JACKSONVILLE TO MIAMI, FLORIDA  
ST. JOHN'S COUNTY  
POST-HURRICANE MATTHEW EXAM SURVEY FY17  
12-FOOT PROJECT  
STA. 8+00 CUT SJ-59 THRU STA. 20+00 CUT SJ-60  
PLAN

Scale: AS SHOWN

Drawing no.  
**3 / 4**

SHEET 66 OF 73

