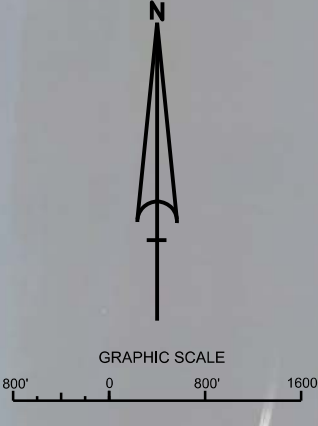


PORT EVERGLADES HARBOR BROWARD COUNTY, FLORIDA POST-HURRICANE MATTHEW EXAMINATION SURVEY FY17 31, 36, 37, 42 AND 45-FOOT PROJECT

- SURVEY NOTES**
- REFER TO SURVEY NO. 17-014.
 - ELEVATIONS ARE IN FEET AND TENTHS AND REFER TO THE NOAA REPORTED MEAN LOWER LOW WATER (MLLW) TIDAL DATUM, 1983-2001 EPOCH.
 - TIDAL REDUCTIONS WERE OBTAINED UTILIZING A REAL-TIME KINEMATIC (RTK) GPS AND REFERENCED TO MLLW UTILIZING A HYPACK KINEMATIC TIDE DATUM (KTD) MODEL. KTD FILE NAME IS: "PALMBEACH-BROWARD-2016 05 26.KTD".
 - ALL ELEVATIONS ARE BELOW THE CHART DATUM UNLESS PRECEDED BY A (+) SIGN.
 - PLANE COORDINATES ARE BASED ON THE TRANSVERSE MERCATOR PROJECTION FOR THE EAST ZONE OF FLORIDA AND REFERENCED TO NORTH AMERICAN DATUM OF 1983 (NAD83).
 - ALL STATIONING REFERS TO THE CENTERLINE OF THE CHANNEL.
 - THIS SURVEY WAS PERFORMED USING REAL-TIME KINEMATIC GPS POSITIONING WITH THE FOLLOWING REFERENCE BASE LOCATION:
REFERENCE BASE LOCATED AT "USN NORTH RANGE 2 NO. 5" (OPUS PID: CS4034)
TIDE STAFF SET IN JOHN LLOYD STATE PARK FROM NOAA TIDAL MONUMENT "NGS NO2 1973" (OPUS PID: AD5884)
 - DEPTHS DEPICTED BY THIS SURVEY ARE REFERENCED TO MLLW, TIDAL 1983-2001, AS REPORTED BY THE NATIONAL OCEANIC AND ATMOSPHERIC ADMINISTRATION (NOAA). NOAA'S VDATUM MODEL WAS USED AND CALIBRATED TO THE PUBLISHED MLLW HEIGHTS OF THE BENCH MARKS ASSOCIATED WITH THE TIDE GAGE SITE SPECIFIED BELOW:
NOAA TIDAL STATION 872-2957, NORTH DANIA SOUND, FL FOR ENTIRE PROJECT
 - VERTICAL MEASUREMENTS WERE MADE USING A R2SONIC 2024 MULTIBEAM SYSTEM OPERATING AT 240 KHZ. SOUNDINGS SHOWN ARE IN HIGH FREQUENCY.
- | VESSEL | DATE OF SURVEY | CUT |
|---------------|----------------|------------------------------|
| SV FLORIDA II | 04 NOV 2016 | ENTRANCE CHANNEL |
| SV FLORIDA II | 05 NOV 2016 | TURNING BASIN, SP1, SP2, SP3 |
| SV FLORIDA II | 06 NOV 2016 | NAVAIDS |
- AIDS TO NAVIGATION WERE LOCATED DURING THIS SURVEY.
 - THE INFORMATION DEPICTED ON THIS MAP REPRESENTS THE RESULTS OF SURVEYS MADE ON THE DATES INDICATED ABOVE AND CAN ONLY BE CONSIDERED AS INDICATING THE GENERAL CONDITIONS AT THAT TIME. THIS CHART IS SOLELY FOR THE DISTRIBUTION OF AVAILABLE DEPTHS AT THE TIME OF THE SURVEY.
 - SURVEY ACCURACY PERFORMANCE STANDARDS, QUALITY CONTROL, AND QUALITY ASSURANCE REQUIREMENTS WERE FOLLOWED DURING THIS SURVEY IN ACCORDANCE WITH USACE EM 1110-2-1003, HYDROGRAPHIC SURVEYING, 30 NOV 13.

LEGEND	
	MONUMENT
	LIGHTED BEACON
	GREEN DAY BEACON
	RED DAY BEACON
	RED LIGHTED BUOY
	GREEN LIGHTED BUOY
	CAN BUOY
	NUN BUOY
	TIDE STAFF
8	PROJECT DEPTH



US Army Corps of Engineers
Jacksonville District
SAFETY ON THIS JOB DEPENDS ON YOU

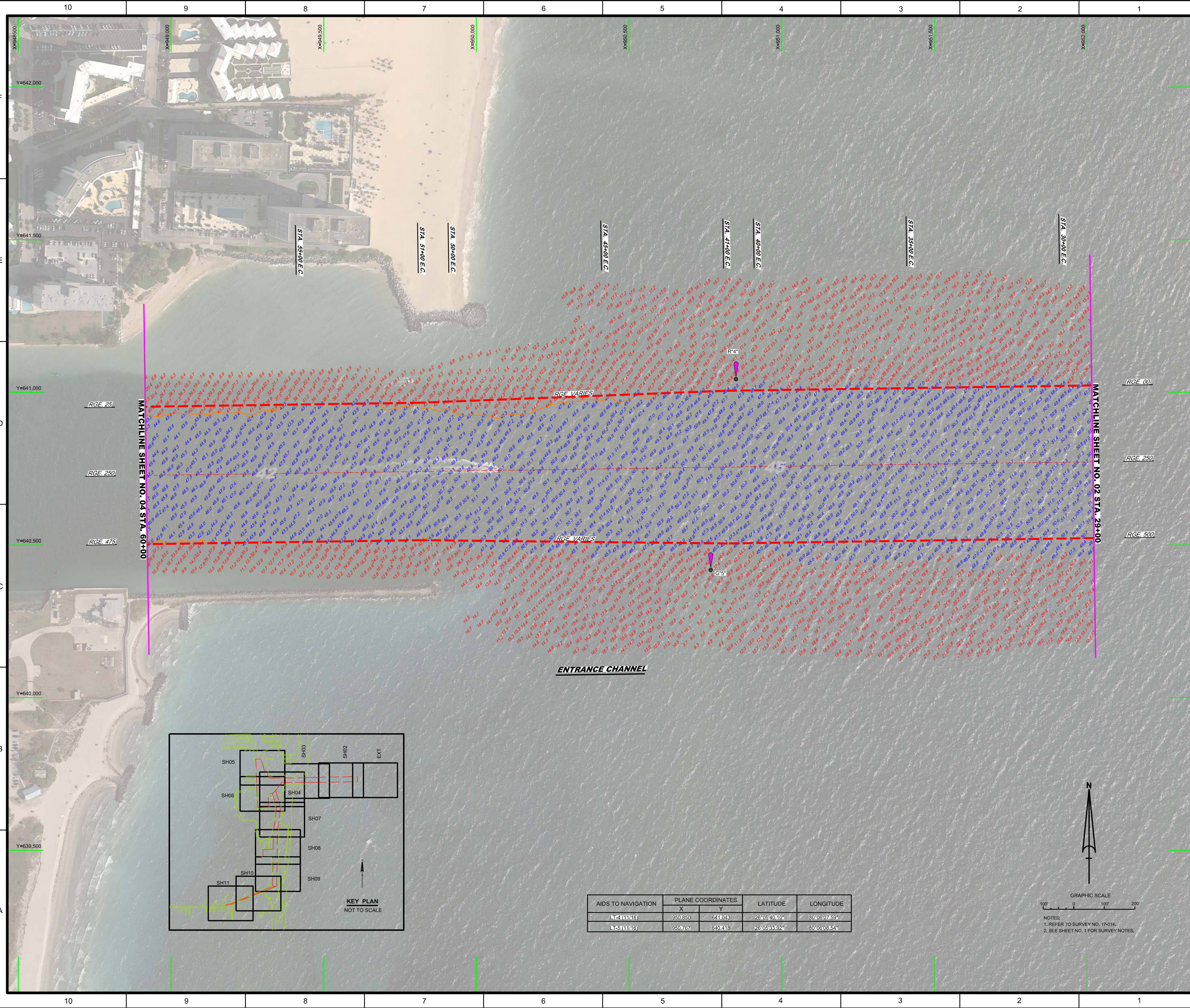
DESIGNED BY: WRM
DRAWN BY: WRM
CHECKED BY: WRM
DATE: NOV 2016

PROJECT: PORT EVERGLADES HARBOR CANAL CUT-1

FILE NAME: 17-014-01.DGN

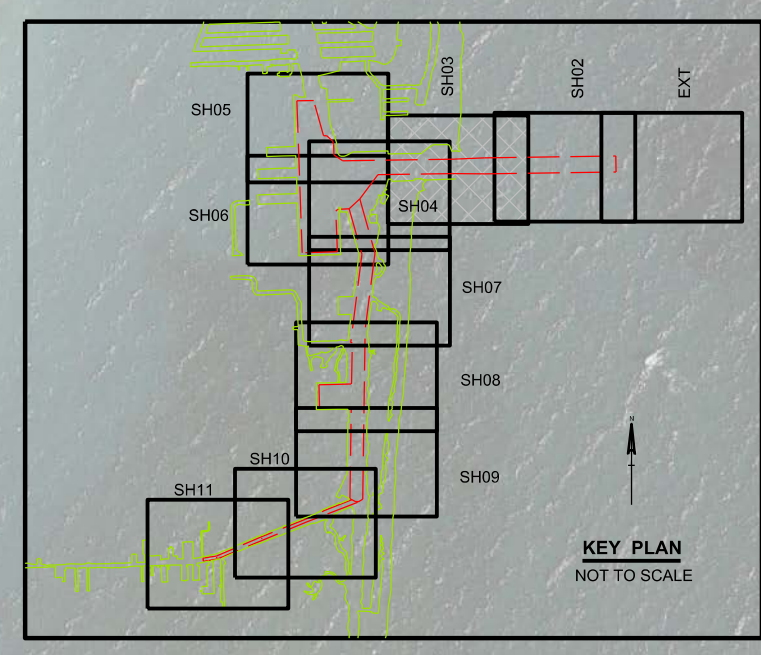
PORT EVERGLADES HARBOR, FLORIDA
POST-HURRICANE MATTHEW EXAM SURVEY FY17
31-FOOT THRU 45-FOOT PROJECT
INDEX, LOCATION AND VICINITY MAP

Scale: AS SHOWN
Drawing no. 1 / 9
SHEET 01 OF 11



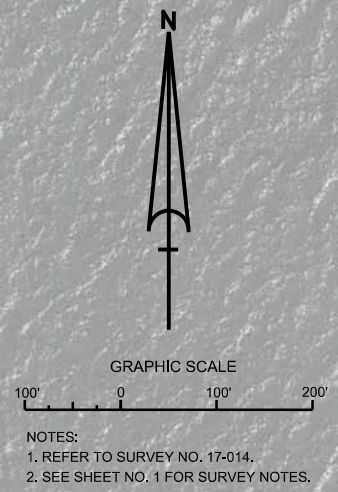
MATCHLINE SHEET NO. 04 STA. 60+00

MATCHLINE SHEET NO. 02 STA. 29+00



ENTRANCE CHANNEL

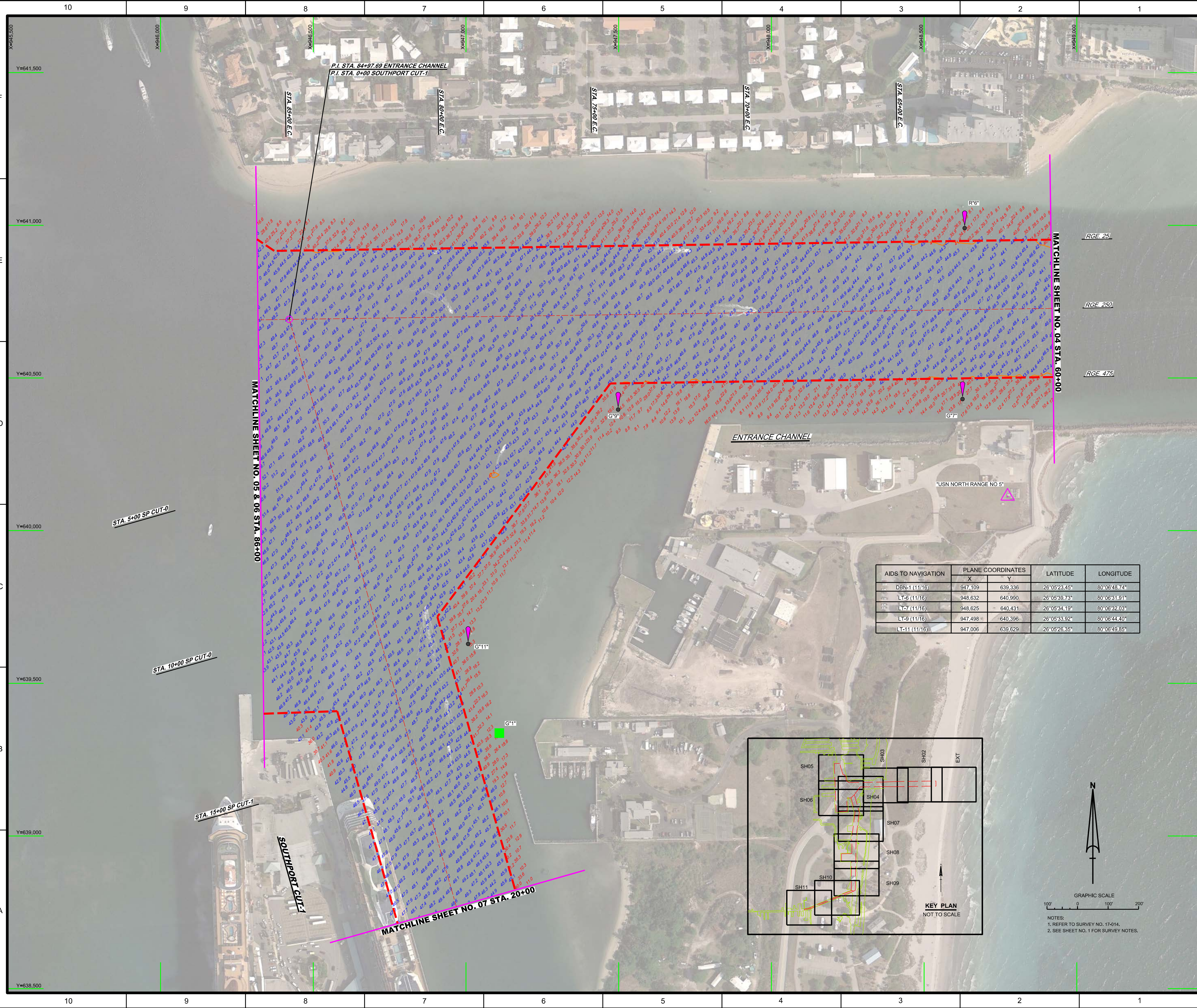
AIDS TO NAVIGATION	PLANE COORDINATES		LATITUDE	LONGITUDE
	X	Y		
LT-4 (11/16)	950.850	641.043	26°05'40.10"	80°06'07.59"
LT-5 (11/16)	950.767	640.418	26°05'33.92"	80°06'08.54"



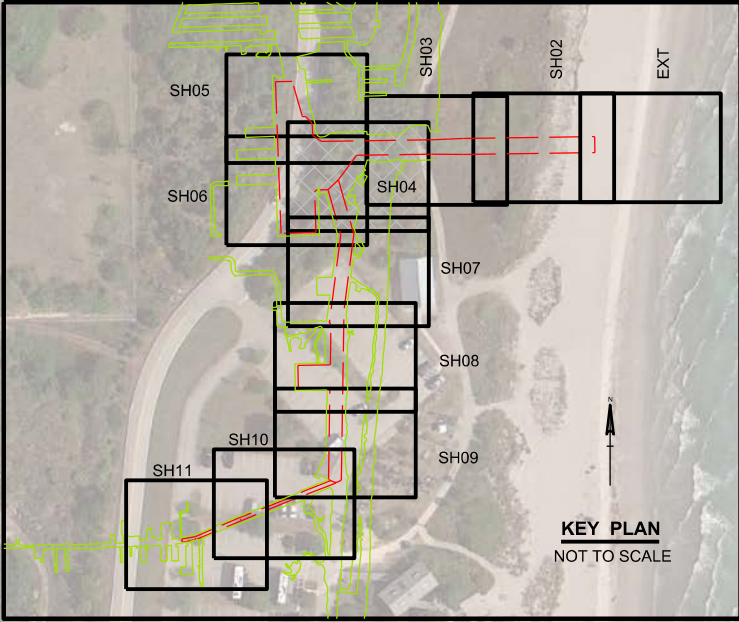
NOTES:
1. REFER TO SURVEY NO. 17-014.
2. SEE SHEET NO. 1 FOR SURVEY NOTES.

10 9 8 7 6 5 4 3 2 1

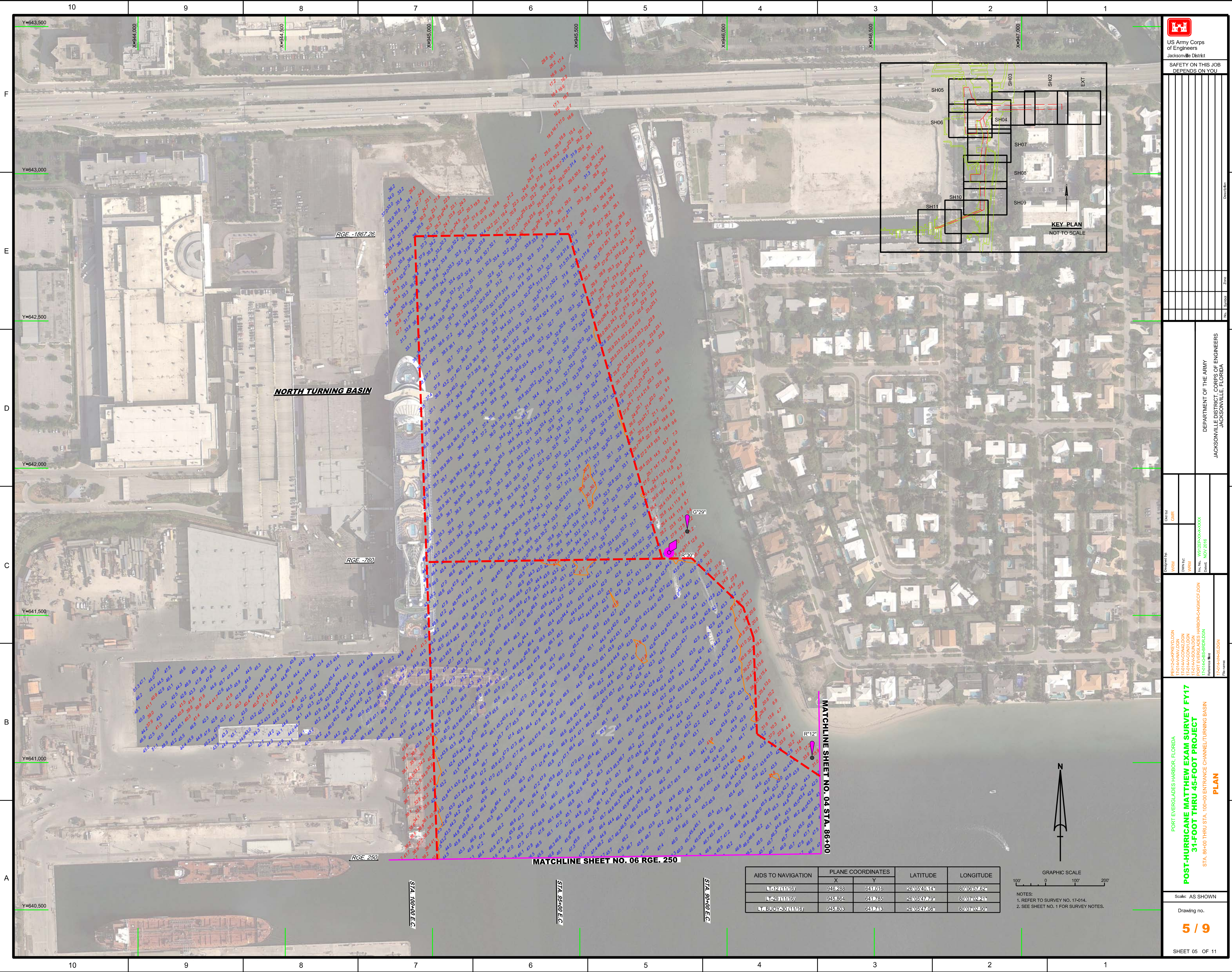
F
E
D
C
B
A



AIDS TO NAVIGATION	PLANE COORDINATES		LATITUDE	LONGITUDE
	X	Y		
DBN-1 (11/16)	947.109	639.336	26°05'23.45"	80°06'48.74"
LT-6 (11/16)	948.632	640.990	26°05'39.73"	80°06'31.91"
LT-7 (11/16)	948.625	640.431	26°05'34.19"	80°06'32.03"
LT-9 (11/16)	947.498	640.396	26°05'33.92"	80°06'44.40"
LT-11 (11/16)	947.006	639.629	26°05'26.35"	80°06'49.85"



GRAPHIC SCALE
100' 0 100' 200'
NOTES:
1. REFER TO SURVEY NO. 17-014.
2. SEE SHEET NO. 1 FOR SURVEY NOTES.



NORTH TURNING BASIN

RGE -1867.26

RGE -760

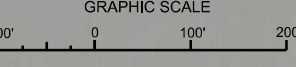
RGE 250

STA 100+00 E.C.


MATCHLINE SHEET NO. 06 RGE. 250

MATCHLINE SHEET NO. 04 STA. 86+00

AIDS TO NAVIGATION	PLANE COORDINATES		LATITUDE	LONGITUDE
	X	Y		
LT-2 (11/16)	945288	641016	28°05'40.14"	80°07'57.62"
LT-29 (11/16)	945864	641785	28°05'47.79"	80°07'52.21"
LT BUOY-39 (11/16)	945803	641743	28°05'47.08"	80°07'52.50"



NOTES:
1. REFER TO SURVEY NO. 17-014.
2. SEE SHEET NO. 1 FOR SURVEY NOTES.



US Army Corps of Engineers
Jacksonville District

SAFETY ON THIS JOB DEPENDS ON YOU

Call by: GHR

Designed by: WRM

Drawn by: WRM

Checked by: WRM

Reference File: 17-04-HR-03.DGN

File Name: 17-04-HR-03.DGN

Date: NOV 2016

PORT EVERGLADES HARBOR, FLORIDA

POST-HURRICANE MATTHEW EXAM SURVEY FY17

31-FOOT THRU 45-FOOT PROJECT

STA. 86+00 THRU STA. 100+00 ENTRANCE CHANNEL/TURNING BASIN

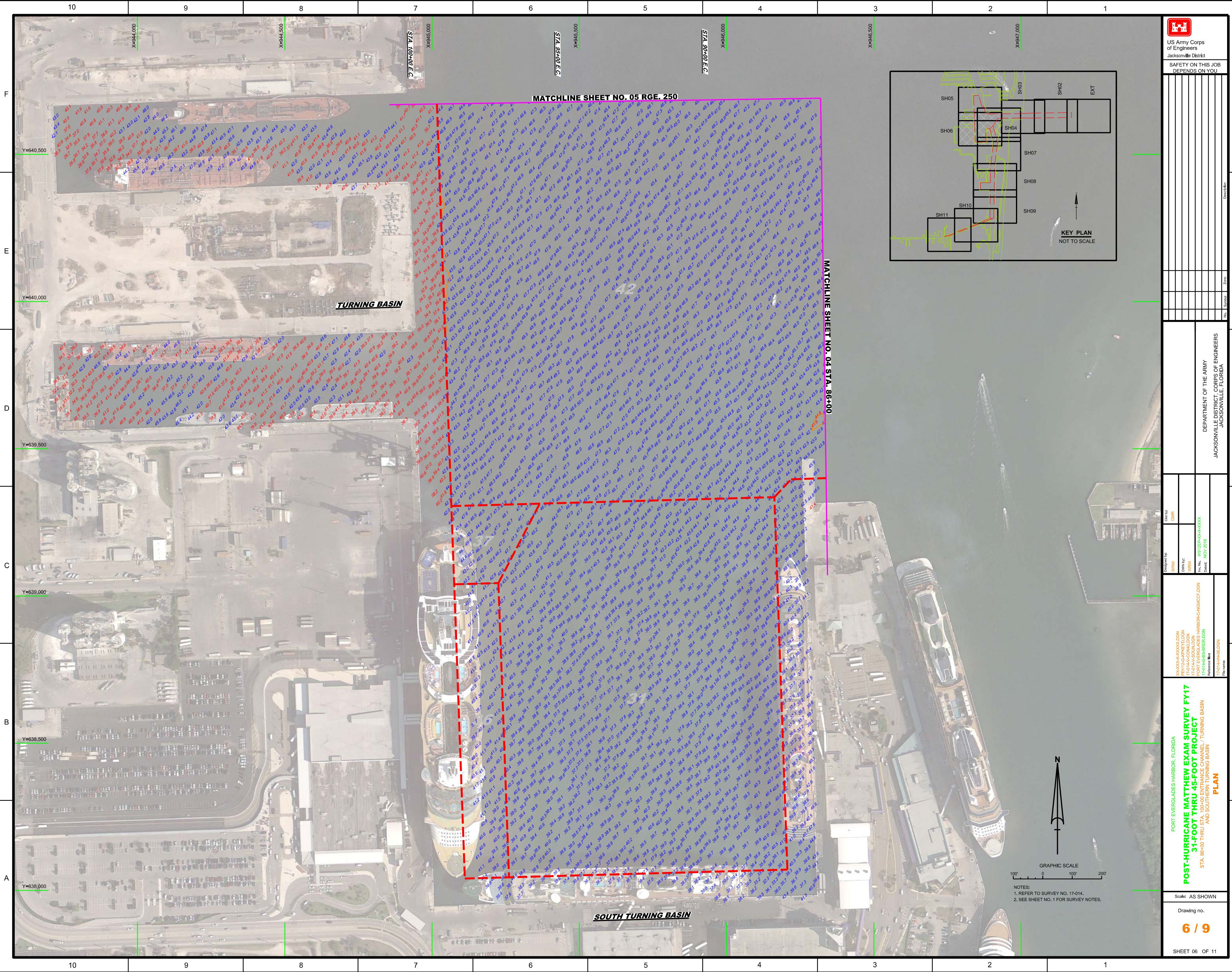
PLAN

DEPARTMENT OF THE ARMY
JACKSONVILLE DISTRICT, CORPS OF ENGINEERS
JACKSONVILLE, FLORIDA

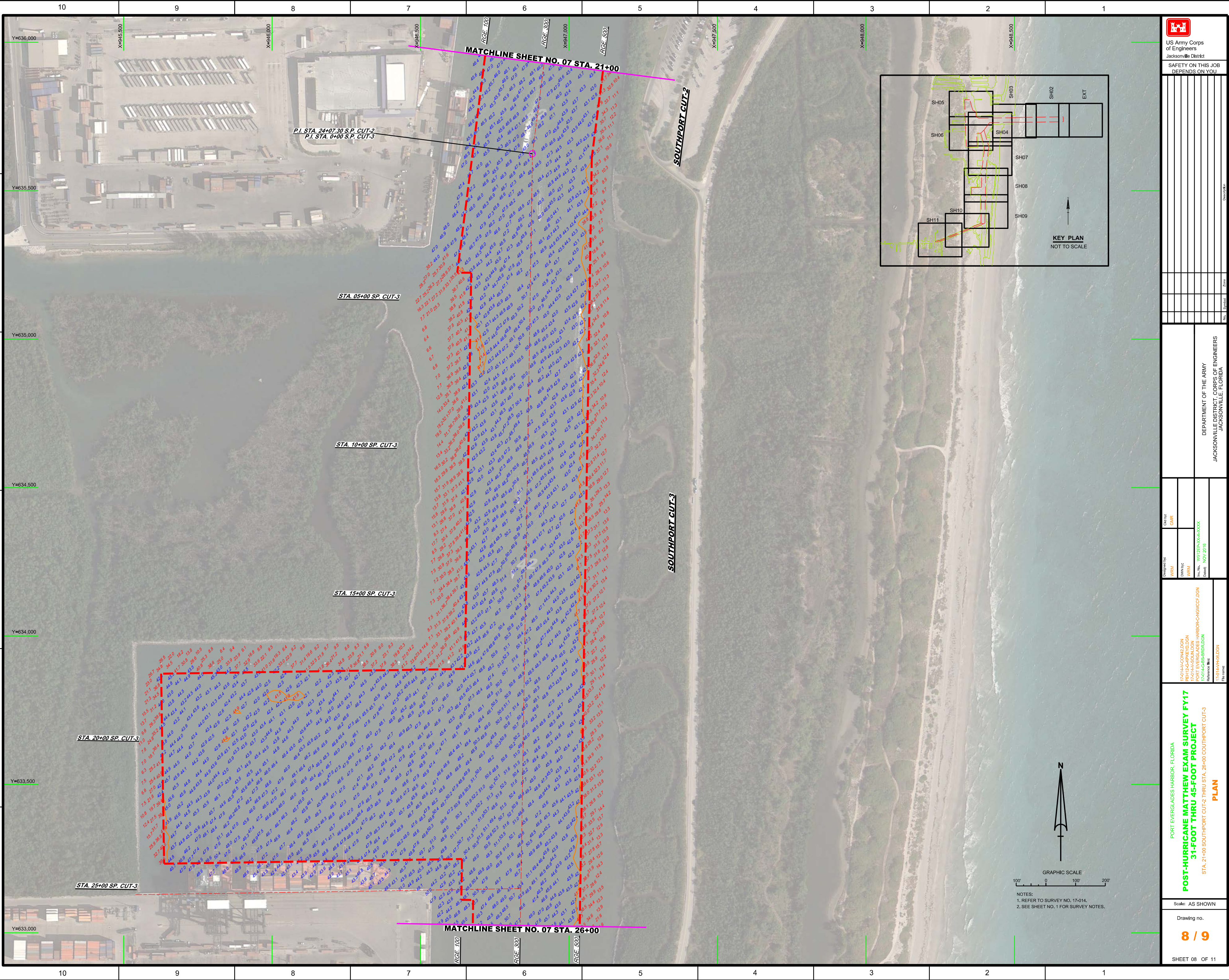
Scale: AS SHOWN

Drawing no. **5 / 9**

SHEET 05 OF 11



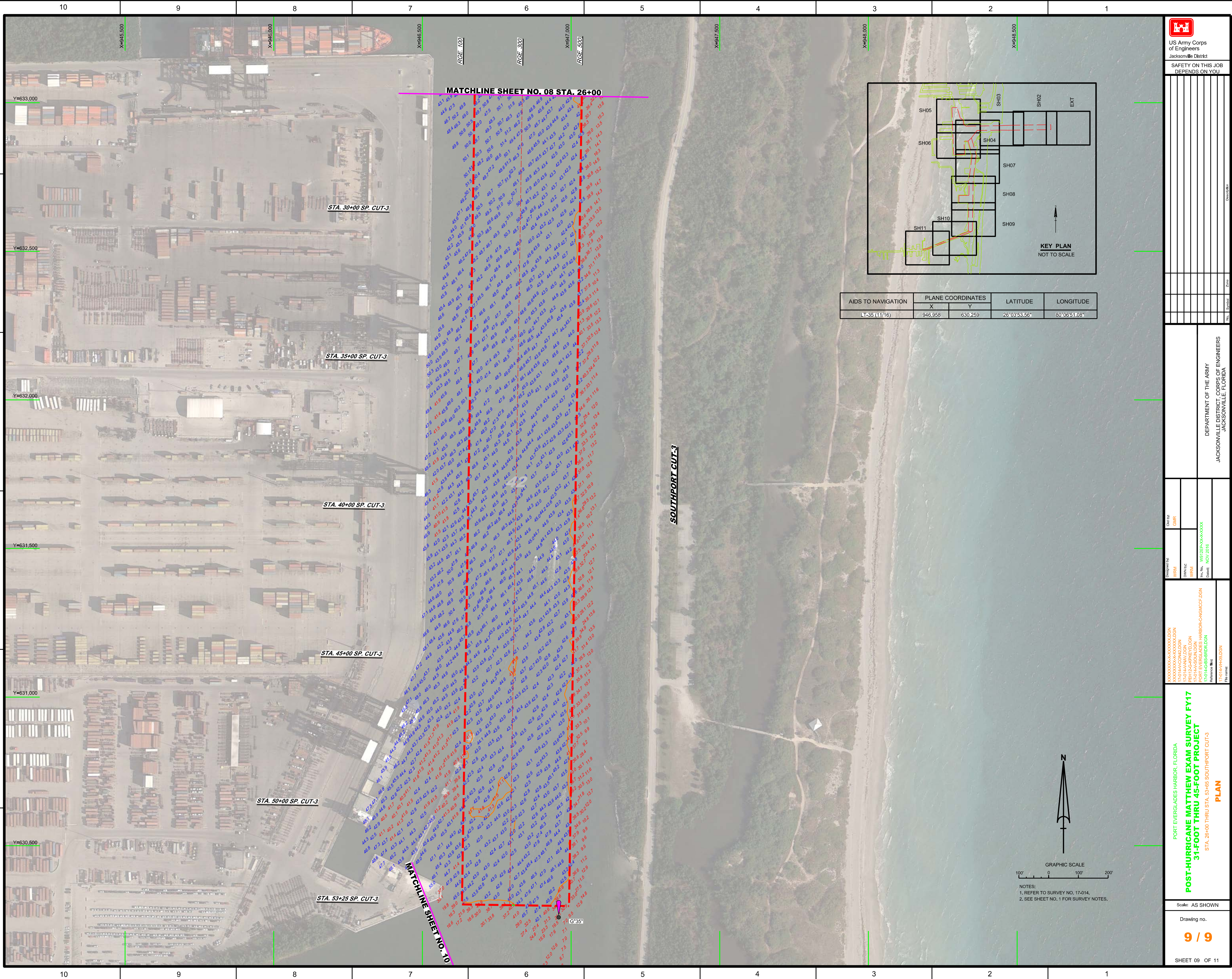
<p>US Army Corps of Engineers Jacksonville District</p>	
<p>SAFETY ON THIS JOB DEPENDS ON YOU</p>	
<p>DEPARTMENT OF THE ARMY JACKSONVILLE DISTRICT, CORPS OF ENGINEERS JACKSONVILLE, FLORIDA</p>	
<p>Drawn by: WRM</p>	<p>Checked by: GHR</p>
<p>Designed by: WRM</p>	<p>Date: NOV 2016</p>
<p>PORT EVERGLADES HARBOR, FLORIDA POST-HURRICANE MATTHEW EXAM SURVEY FY17 31-FOOT THRU 45-FOOT PROJECT STA. 86+00 THRU STA. 100+00 ENTRANCE CHANNEL / TURNING BASIN AND SOUTHERN TURNING BASIN PLAN</p>	
<p>Scale: AS SHOWN</p>	
<p>Drawing no.</p>	
<p>6 / 9</p>	
<p>SHEET 06 OF 11</p>	



<p>US Army Corps of Engineers Jacksonville District</p>	
<p>SAFETY ON THIS JOB DEPENDS ON YOU</p>	
<p>DESIGNED BY: WRM</p>	<p>CHECKED BY: GHR</p>
<p>DRAWN BY: WRM</p>	<p>DATE: NOV 2016</p>
<p>PROJECT: PORT EVERGLADES HARBOR/CANAL/CP/DGN</p>	
<p>FILE NAME: 17-04-HR-DGN</p>	
<p>PORT EVERGLADES HARBOR, FLORIDA</p>	
<p>DEPARTMENT OF THE ARMY JACKSONVILLE DISTRICT, CORPS OF ENGINEERS JACKSONVILLE, FLORIDA</p>	
<p>POST-HURRICANE MATTHEW EXAM SURVEY FY17 31-FOOT THRU 45-FOOT PROJECT PLAN</p>	
<p>STA. 21+00 SOUTHPORT CUT-2 THRU STA. 26+00 COUTHPORT CUT-3</p>	
<p>Scale: AS SHOWN</p>	
<p>Drawing no. 8 / 9</p>	
<p>SHEET 08 OF 11</p>	

GRAPHIC SCALE
100' 0 100' 200'

NOTES:
1. REFER TO SURVEY NO. 17-014.
2. SEE SHEET NO. 1, FOR SURVEY NOTES.



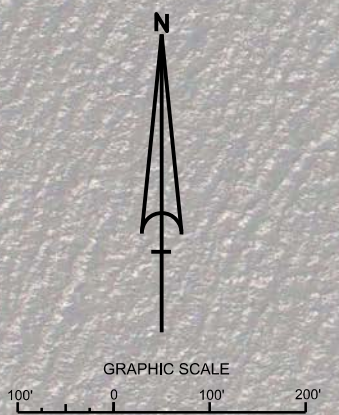
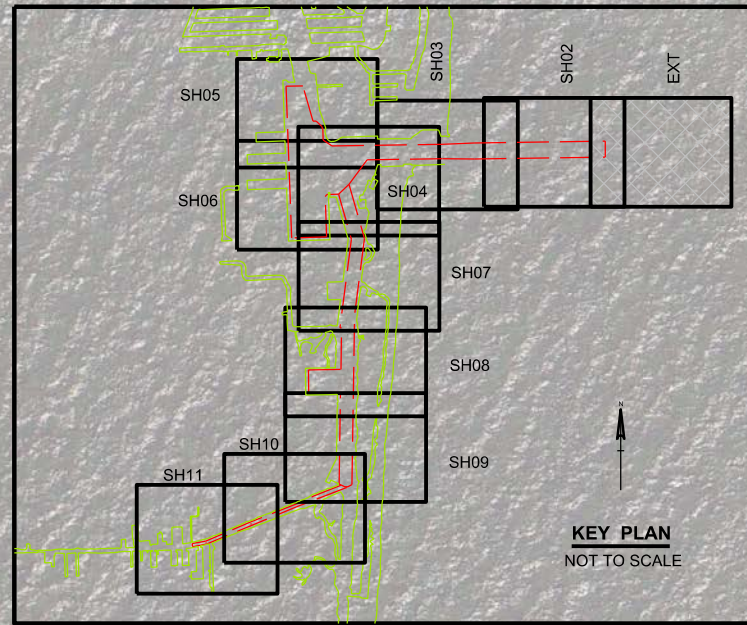
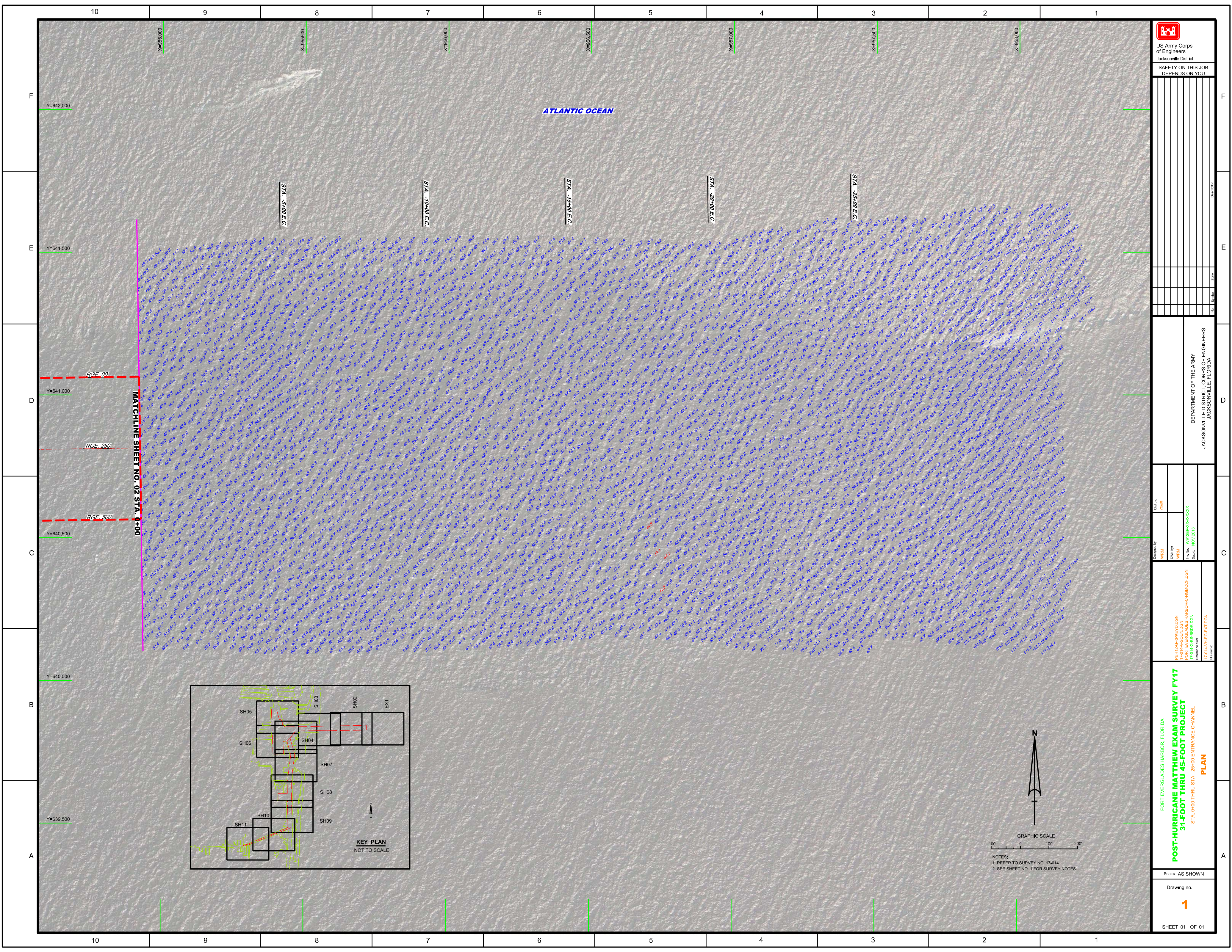
US Army Corps of Engineers
Jacksonville District
SAFETY ON THIS JOB
DEPENDS ON YOU

PLANE COORDINATES	LATITUDE	LONGITUDE
X: 946,958	Y: 630,259	26°03'53.56"
X: 946,958	Y: 630,259	80°06'51.08"

DEPARTMENT OF THE ARMY
JACKSONVILLE DISTRICT, CORPS OF ENGINEERS
JACKSONVILLE, FLORIDA

PORT EVERGLADES HARBOR, FLORIDA
POST-HURRICANE MATTHEW EXAM SURVEY FY17
31-FOOT THRU STA. 53+46 SOUTHPORT CUT-3
PLAN

Scale: AS SHOWN
Drawing no. **9 / 9**
SHEET 09 OF 11



NOTES:
 1. REFER TO SURVEY NO. 174014.
 2. SEE SHEET NO. 1 FOR SURVEY NOTES.

 US Army Corps of Engineers Jacksonville District SAFETY ON THIS JOB DEPENDS ON YOU	
Designated By: WRM WRM WRM WRM	Checked By: GHR GHR GHR GHR
DEPARTMENT OF THE ARMY JACKSONVILLE DISTRICT, CORPS OF ENGINEERS JACKSONVILLE, FLORIDA	
PORT EVERGLADES HARBOR, FLORIDA POST-HURRICANE MATTHEW EXAM SURVEY FY17 31-FOOT THRU STA. -25+00 ENTRANCE CHANNEL PLAN	
Scale: AS SHOWN Drawing no. 1	
SHEET 01 OF 01	