













AIDS TO NAVIGATION	PLANE COORDINATES		LATITUDE	LONGITUDE
	X	Y		
BUOY 35 (1216)	496592	2202163	83°23'24.5"	81°40'22.00"
CB (1216)	496516	2203823	83°23'32.4"	81°40'33.17"
BUOY 37 (1216)	496172	2202200	83°23'29.4"	81°40'33.15"

BLOUNT ISLAND

BACK RIVER

ST. JOHNS RIVER

CALYPSO ISLAND

**US Army Corps of Engineers**  
Jacksonville District

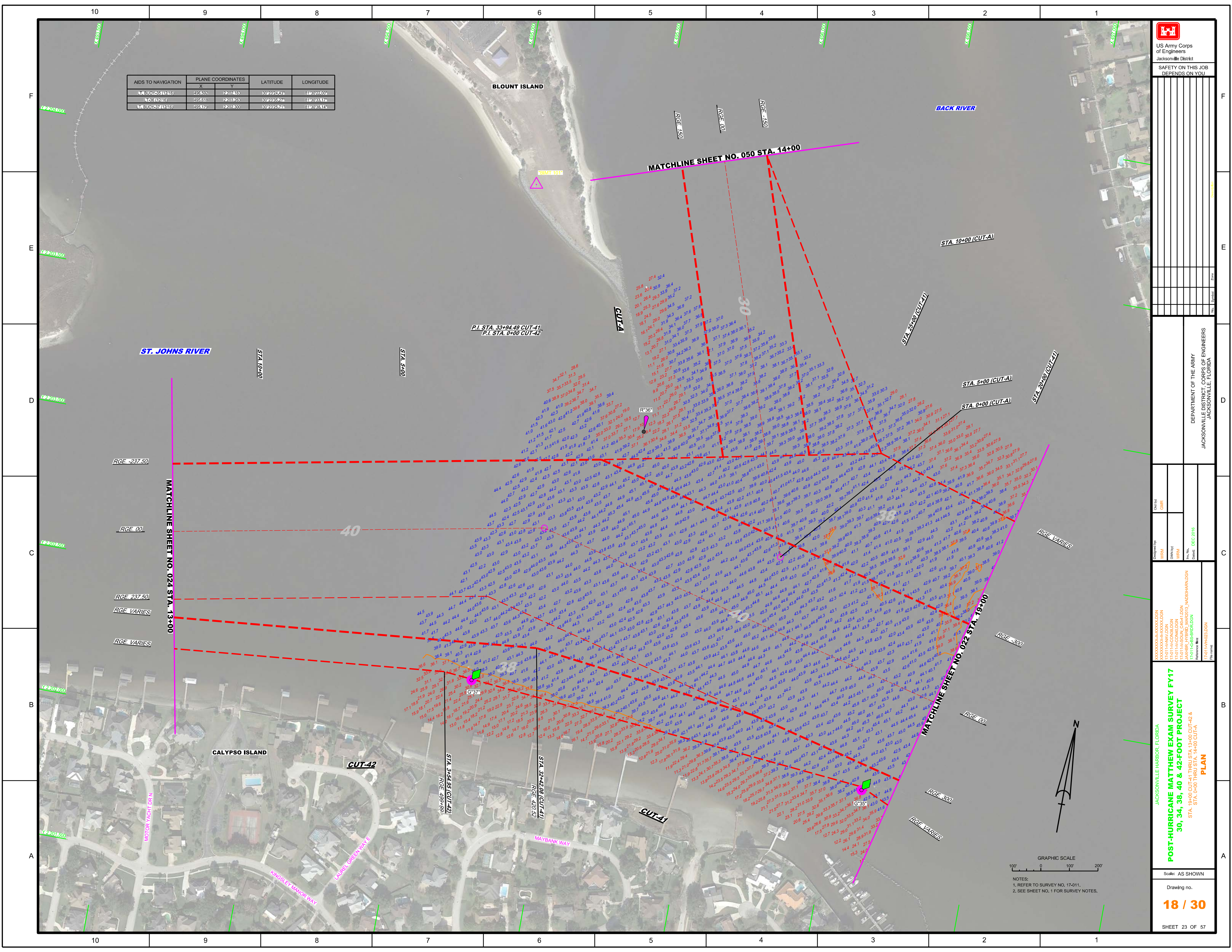
SAFETY ON THIS JOB  
DEPENDS ON YOU

DEPARTMENT OF THE ARMY  
JACKSONVILLE DISTRICT, CORPS OF ENGINEERS  
JACKSONVILLE, FLORIDA

Checked by: GHR  
Designed by: WRM  
Drawn by: WRM  
Reviewed by: JKHBR, TFRBD, MAR2013, NA003HARDON  
Reference files: T-1011MHAZELDN

**POST-HURRICANE MATTHEW EXAM SURVEY FY17**  
30, 34, 38, 40 & 42-FOOT PROJECT  
STA. 19+00 CUT-41 THRU STA 13+00 CUT-42 & STA. 0+00 THRU STA. 14+00 CUT-4A

Scale: AS SHOWN  
Drawing no. **18 / 30**  
SHEET 23 OF 57







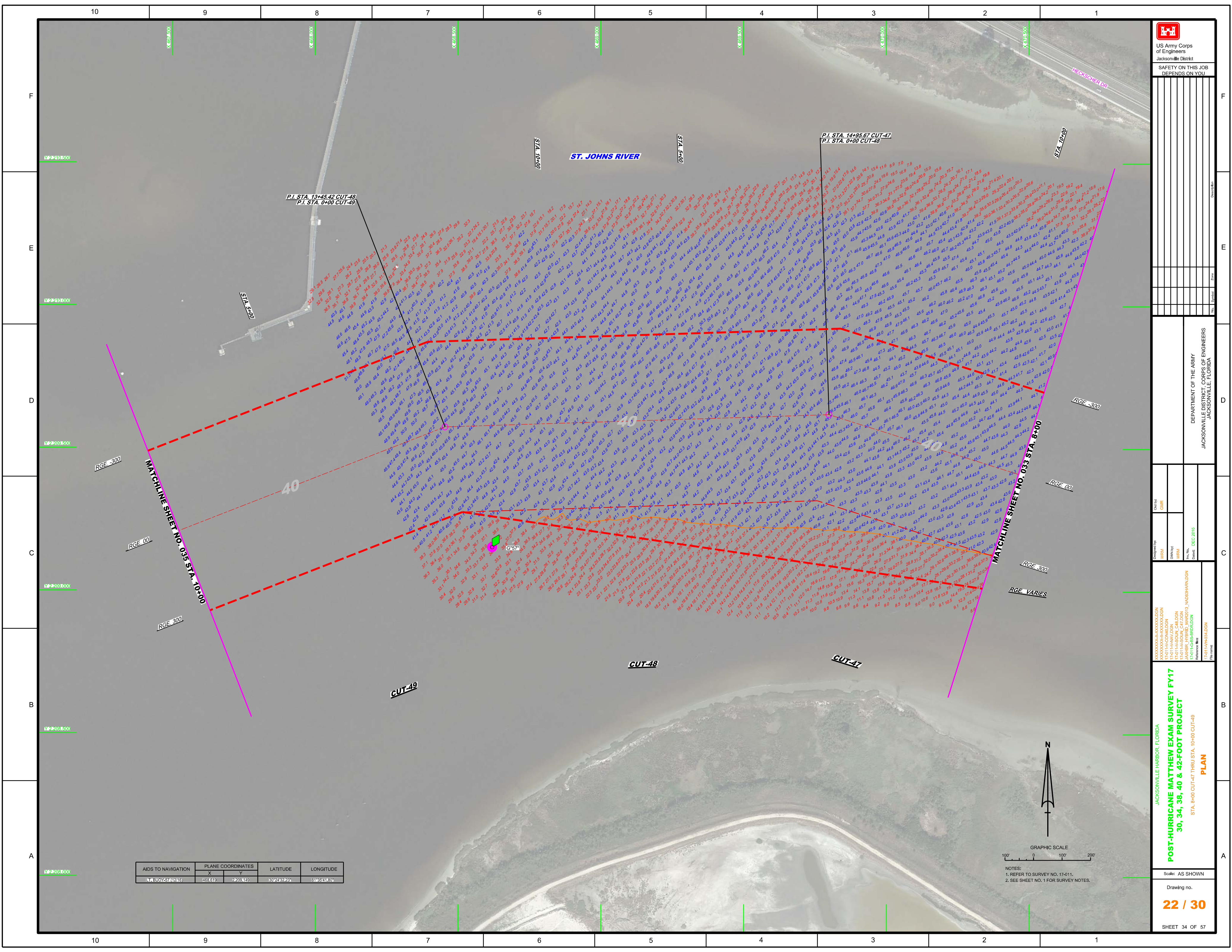




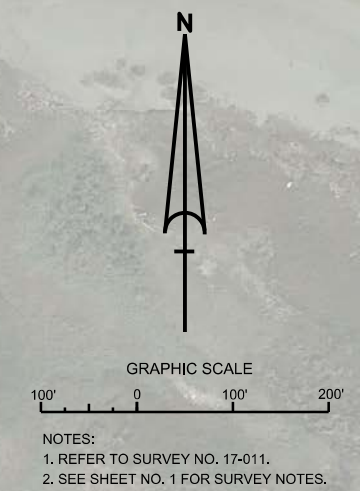









AIDS TO NAVIGATION	PLANE COORDINATES		LATITUDE	LONGITUDE
	X	Y		
LT. BUOY 57 (4216)	463.619	2209140	89°24'32.93"	81°39'41.80"





US Army Corps  
of Engineers  
Jacksonville District

SAFETY ON THIS JOB  
DEPENDS ON YOU

---

DESIGNED BY: WRM  
CHECKED BY: GHR  
DATE: DEC 2018

PROJECT: POST-HURRICANE MATTHEW EXAM SURVEY FY17  
30, 34, 38, 40 & 42-FOOT PROJECT

STATIONING: STA. 8+00 CUT-47 THRU STA. 10+00 CUT-49

PLAN

---

JACKSONVILLE HARBOR, FLORIDA

Scale: AS SHOWN

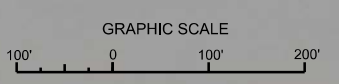
Drawing no. **22 / 30**

SHEET 34 OF 57









NOTES:  
1. REFER TO SURVEY NO. 17-011.  
2. SEE SHEET NO. 1 FOR SURVEY NOTES.









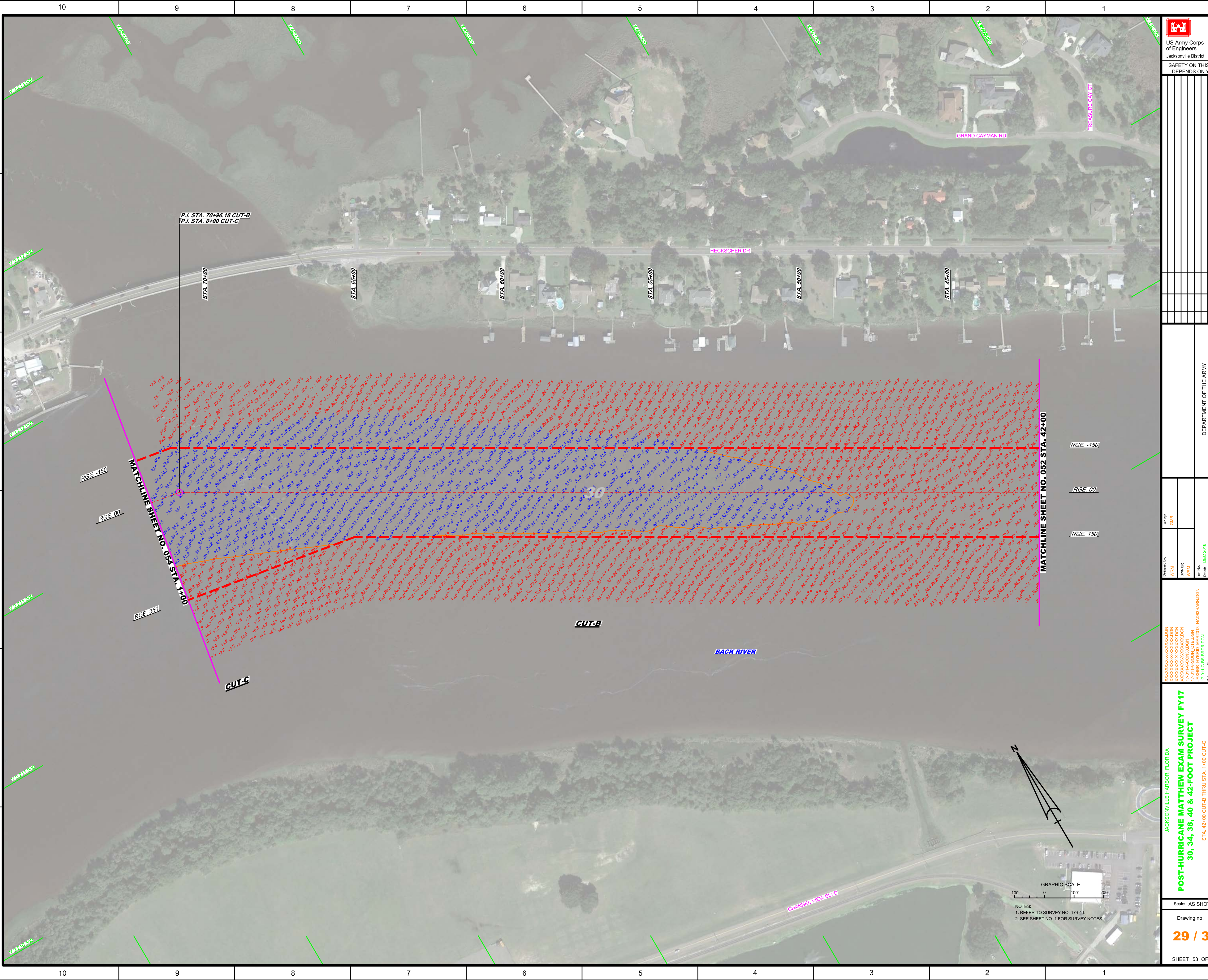












  
 US Army Corps of Engineers  
 Jacksonville District  
 SAFETY ON THIS JOB  
 DEPENDS ON YOU

DEPARTMENT OF THE ARMY  
 JACKSONVILLE DISTRICT, CORPS OF ENGINEERS  
 JACKSONVILLE, FLORIDA

Designed by: **WRM**  
 Drawn by: **WRM**  
 Checked by: **WRM**  
 Date: **DEC 2018**

JACKSONVILLE HARBOR, FLORIDA  
**POST-HURRICANE MATTHEW EXAM SURVEY FY17**  
**30, 34, 38, 40 & 42-FOOT PROJECT**  
 STA. 42+00 CUT-B THRU STA. 1+00 CUT-C  
**PLAN**

Scale: AS SHOWN  
 Drawing no.  
**29 / 30**  
 SHEET 53 OF 57



