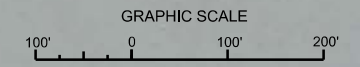
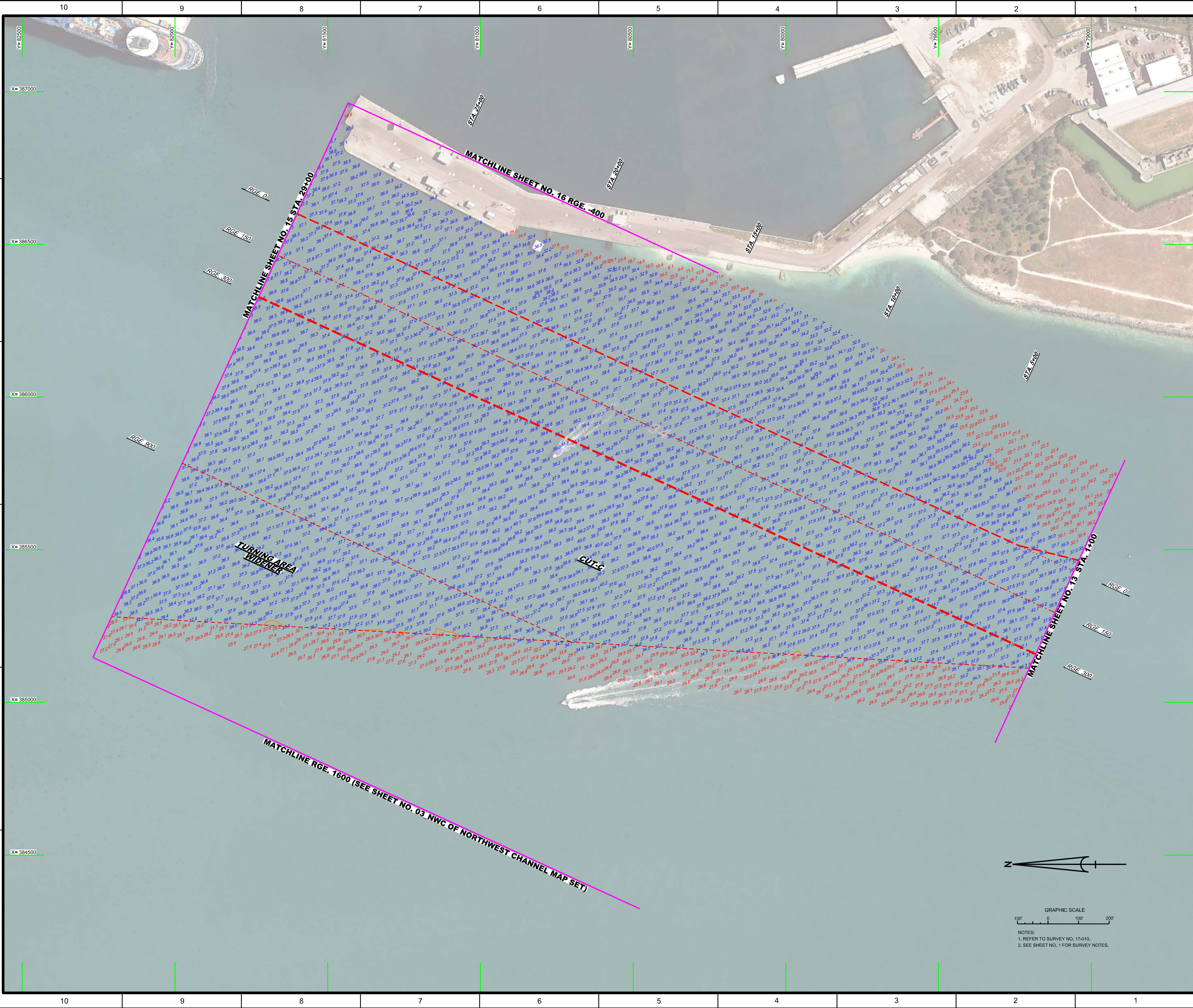


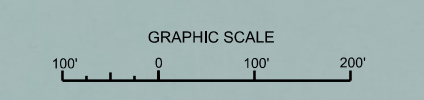
AIDS TO NAVIGATION	PLANE COORDINATES		LATITUDE	LONGITUDE
	X	Y		
L.T. BUOY-9 (11116)	884.563	74790	24°31'42.66"	81°49'01.20"
L.T. BUOY-12 (11116)	885.137	78287	24°31'58.12"	81°48'55.08"



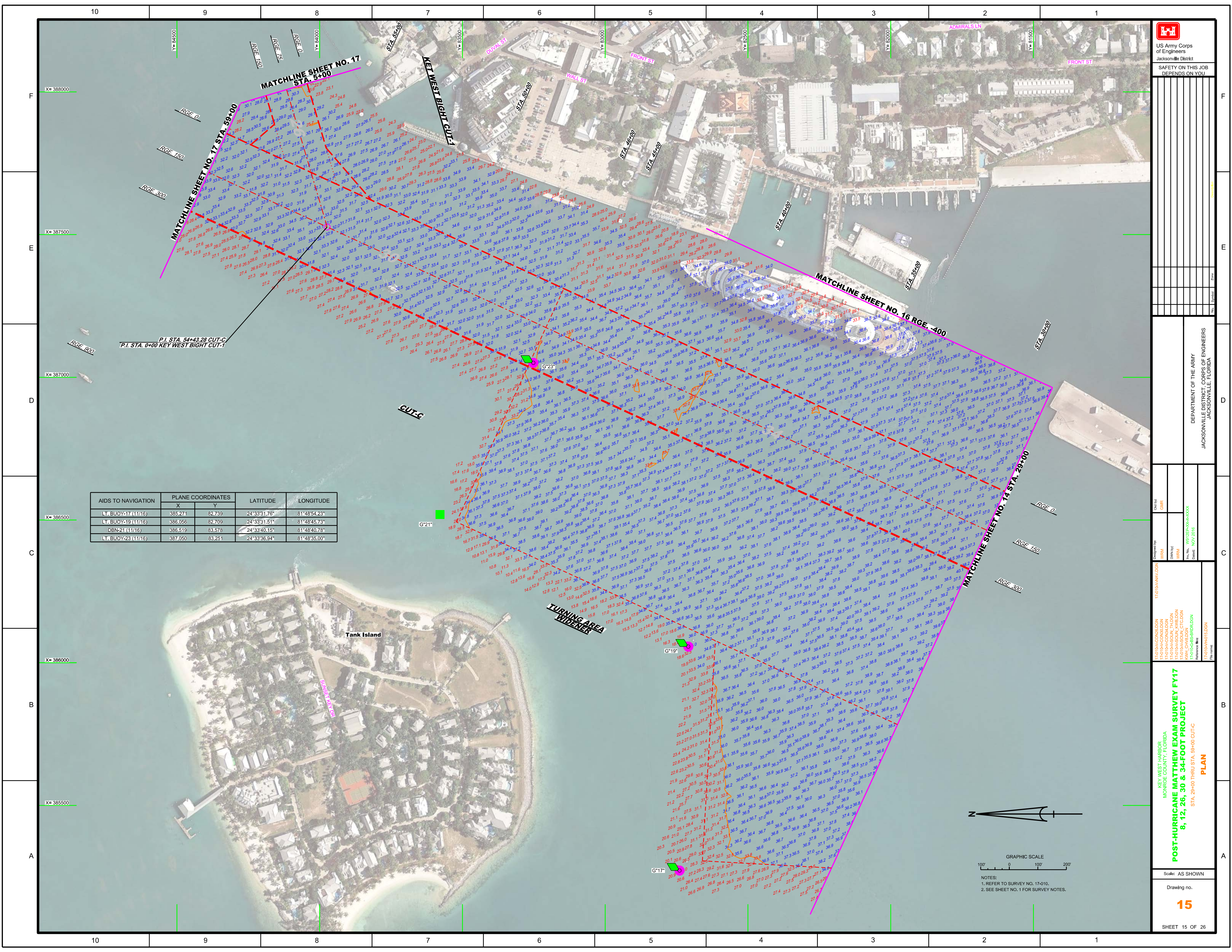
NOTES:
1. REFER TO SURVEY NO. 17-010.
2. SEE SHEET NO. 1 FOR SURVEY NOTES.




<p>US Army Corps of Engineers Jacksonville District SAFETY ON THIS JOB DEPENDS ON YOU</p>	
<p>DEPARTMENT OF THE ARMY JACKSONVILLE DISTRICT, CORPS OF ENGINEERS JACKSONVILLE, FLORIDA</p>	
<p>Checked By: GHR</p>	<p>Drawn By: WPM</p>
<p>Designed By: WPM</p>	<p>Checked: NOV 2016</p>
<p>KEY WEST HARBOR MONROE COUNTY, FLORIDA POST-HURRICANE MATTHEW EXAM SURVEY FY17 8, 12, 26, 30 & 34-FOOT PROJECT STA. 1+00 THRU STA. 28+00 CUT-C PLAN</p>	
<p>Scale: AS SHOWN</p>	
<p>Drawing no.</p>	
<p>14</p>	
<p>SHEET 14 OF 26</p>	



NOTES:
1. REFER TO SURVEY NO. 17-010.
2. SEE SHEET NO. 1 FOR SURVEY NOTES.



AIDS TO NAVIGATION	PLANE COORDINATES		LATITUDE	LONGITUDE
	X	Y		
LT. BUOY-17 (11/16)	385271	82739	24°33'31.76"	81°48'54.23"
LT. BUOY-19 (11/16)	386056	82709	24°33'31.51"	81°48'45.73"
DBN-21 (11/16)	386519	83578	24°33'40.15"	81°48'40.78"
LT. BUOY-23 (11/16)	387050	83251	24°33'36.94"	81°48'35.00"

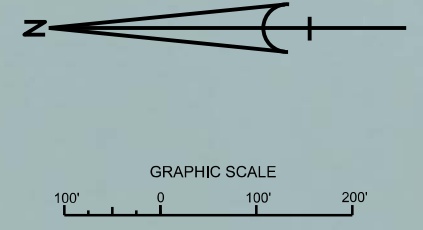


US Army Corps of Engineers
Jacksonville District
SAFETY ON THIS JOB
DEPENDS ON YOU

DEPARTMENT OF THE ARMY
JACKSONVILLE DISTRICT, CORPS OF ENGINEERS
JACKSONVILLE, FLORIDA

KEY WEST HARBOR
MONROE COUNTY, FLORIDA
POST-HURRICANE MATHIEW EXAM SURVEY FY17
8, 12, 26, 30 & 34-FOOT PROJECT
STA. 29+00 THRU STA. 59+00 CUT-C
PLAN

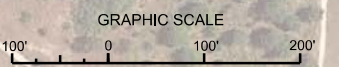
Scale: AS SHOWN
Drawing no.
15
SHEET 15 OF 26



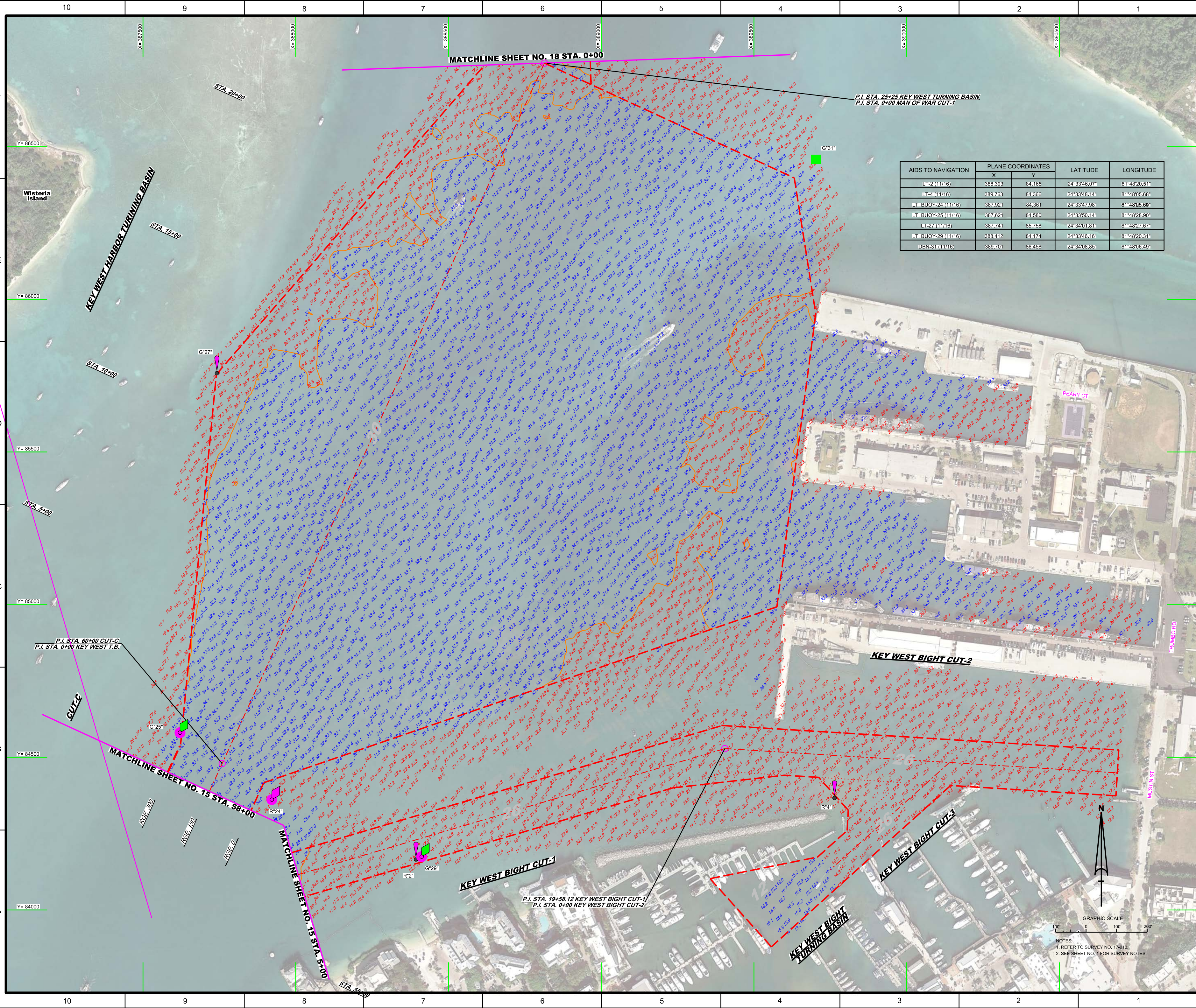
NOTES:
1. REFER TO SURVEY NO. 17-1010.
2. SEE SHEET NO. 1 FOR SURVEY NOTES.



<p>US Army Corps of Engineers Jacksonville District</p>	
<p>SAFETY ON THIS JOB DEPENDS ON YOU</p>	
<p>DEPARTMENT OF THE ARMY JACKSONVILLE DISTRICT, CORPS OF ENGINEERS JACKSONVILLE, FLORIDA</p>	
<p>Drawn by: WRM</p>	<p>Checked by: GHR</p>
<p>Scale: AS SHOWN</p>	<p>Date: NOV 2016</p>
<p>POST-HURRICANE MATTHEW EXAM SURVEY FY17 8, 12, 26, 30 & 34-FOOT PROJECT TRUMAN HARBOR PLAN</p>	
<p>Scale: AS SHOWN</p>	
<p>Drawing no. 16</p>	
<p>SHEET 16 OF 26</p>	




NOTES:
1. REFER TO SURVEY NO. 17-010.
2. SEE SHEET NO. 1 FOR SURVEY NOTES.



MATCHLINE SHEET NO. 18 STA. 0+00

P.I. STA. 25+25 KEY WEST TURNING BASIN
P.I. STA. 0+00 MAN OF WAR CUT-1

AIDS TO NAVIGATION	PLANE COORDINATES	LATITUDE	LONGITUDE	
	X	Y		
LT-2 (11/16)	388.393	84.165	24°33'46.07"	81°48'20.51"
LT-4 (11/16)	389.763	84.366	24°33'48.14"	81°48'05.68"
LT BUOY-24 (11/16)	387.921	84.361	24°33'47.96"	81°48'05.68"
LT BUOY-25 (11/16)	387.621	84.580	24°33'50.14"	81°48'28.90"
LT-27 (11/16)	387.741	85.758	24°34'01.81"	81°48'27.67"
LT BUOY-29 (11/16)	388.412	84.174	24°33'46.16"	81°48'20.31"
DBN-31 (11/16)	389.701	86.458	24°34'08.85"	81°48'06.49"



US Army Corps of Engineers
Jacksonville District

SAFETY ON THIS JOB
DEPENDS ON YOU

DEPARTMENT OF THE ARMY
JACKSONVILLE DISTRICT, CORPS OF ENGINEERS
JACKSONVILLE, FLORIDA

Project: **POST-HURRICANE MATTHEW EXAM SURVEY FY17**
8, 12, 26, 30 & 34-FOOT PROJECT
 STA. 59+00 CUT-C THRU STA. 25+25 KEY WEST HARBOR T.B. STA. 0+00 KEY WEST BIGHT THRU STA. 59+63.25 KEY WEST BIGHT TURNING BASIN

Plan: **PLAN**

Scale: AS SHOWN

Drawing No. **17**

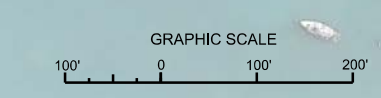
SHEET 17 OF 26




17.8 16.8 15.7 14.1 14.4 15.5
 18.1 16.9 16.9 16.1 16.7
 17.9 18.4 17.8 16.8 17.0 16.9 15.7
 17.6 17.8 18.2 17.8 17.8 17.9 17.4 16.9 15.7
 17.7 17.3 17.4 17.6 17.2 16.7 17.2 17.1 16.3
 16.8 16.7 17.3 17.3 16.7 17.1 16.4
 16.6 16.3 16.3 16.4 16.3 15.9 16.2
 16.1 16.3 16.4 16.0 16.3 16.0 15.9
 16.6 15.4 16.8 16.0 16.3 16.3 14.8
 16.3 16.3 15.3 16.8 16.3 15.1 14.9
 15.7 15.3 15.9 15.7 15.3 15.0 14.9
 14.8 15.4 15.4 15.6 15.6 15.1 14.9 14.5
 16.0 15.9 15.7 15.1 16.3 15.3 15.2 14.7
 15.7 15.9 16.1 15.9 15.8 15.2 16.0 14.6
 15.6 15.9 15.9 15.9 15.7 15.1 15.1 14.9
 15.3 15.9 15.9 15.7 15.1 15.1 14.9
 15.1 15.9 15.9 15.1 15.1 14.9 14.9
 15.0 15.6 15.8 16.1 15.1 14.7 15.1
 14.2 15.1 15.1 15.4 15.4 14.9 14.9 15.5
 12.7 14.1 14.1 14.1 14.2 13.8 14.2 15.2
 11.9 13.4 14.5 14.7 14.9 14.4 14.8 15.5
 10.7 11.0 13.3 14.2 13.7 13.7 14.6
 10.2 11.8 12.9 13.7 13.7 13.4 14.9
 10.8 11.6 13.0 13.4 13.1 13.1 13.1
 12.1 11.3 12.7 13.8 13.4 13.2 12.0
 13.0 12.7 13.3 14.0 14.7 14.4
 13.0 14.4 14.2 14.9 14.7 14.4
 16.9 14.4 16.1 15.6 15.4 14.3
 15.5 15.7 15.4 15.6 15.2 14.3
 15.8 14.7 15.7 15.6 14.8 15.0
 14.1 15.7 15.7 15.6 14.8 14.8
 14.1 15.4 16.0 17.1 15.7 15.0 14.8
 13.5 16.3 17.0 16.5 17.3 17.4 17.8 17.8
 15.0 14.1 16.8 17.3 16.2 16.2 16.4
 17.8 16.3 15.6 16.1 17.7 16.8 16.2 16.4
 16.1 17.8 16.5 16.0 16.2 16.0 16.1 19.1
 16.8 16.5 16.5 16.9 16.9 16.3 20.1 20.5
 16.8 16.3 16.3 16.1 19.0 16.3 16.3 20.0
 17.4 17.4 16.3 16.1 16.1 16.3 16.3 20.7
 17.8 16.3 16.3 16.1 16.1 16.3 16.3 21.3

MATCHLINE SHEET NO. 18 RGE -1000

AIDS TO NAVIGATION	PLANE COORDINATES		LATITUDE	LONGITUDE
	X	Y		
DBN-3 (11/16)	390,337	88,710	24°34'31.20"	81°47'59.74"
DBN-4 (11/16)	390,488	88,603	24°34'30.16"	81°47'58.10"



NOTES:
 1. REFER TO SURVEY NO. 17-010.
 2. SEE SHEET NO. 1 FOR SURVEY NOTES.



US Army Corps
of Engineers
Jacksonville District

SAFETY ON THIS JOB
DEPENDS ON YOU

DEPARTMENT OF THE ARMY
JACKSONVILLE DISTRICT, CORPS OF ENGINEERS
JACKSONVILLE, FLORIDA

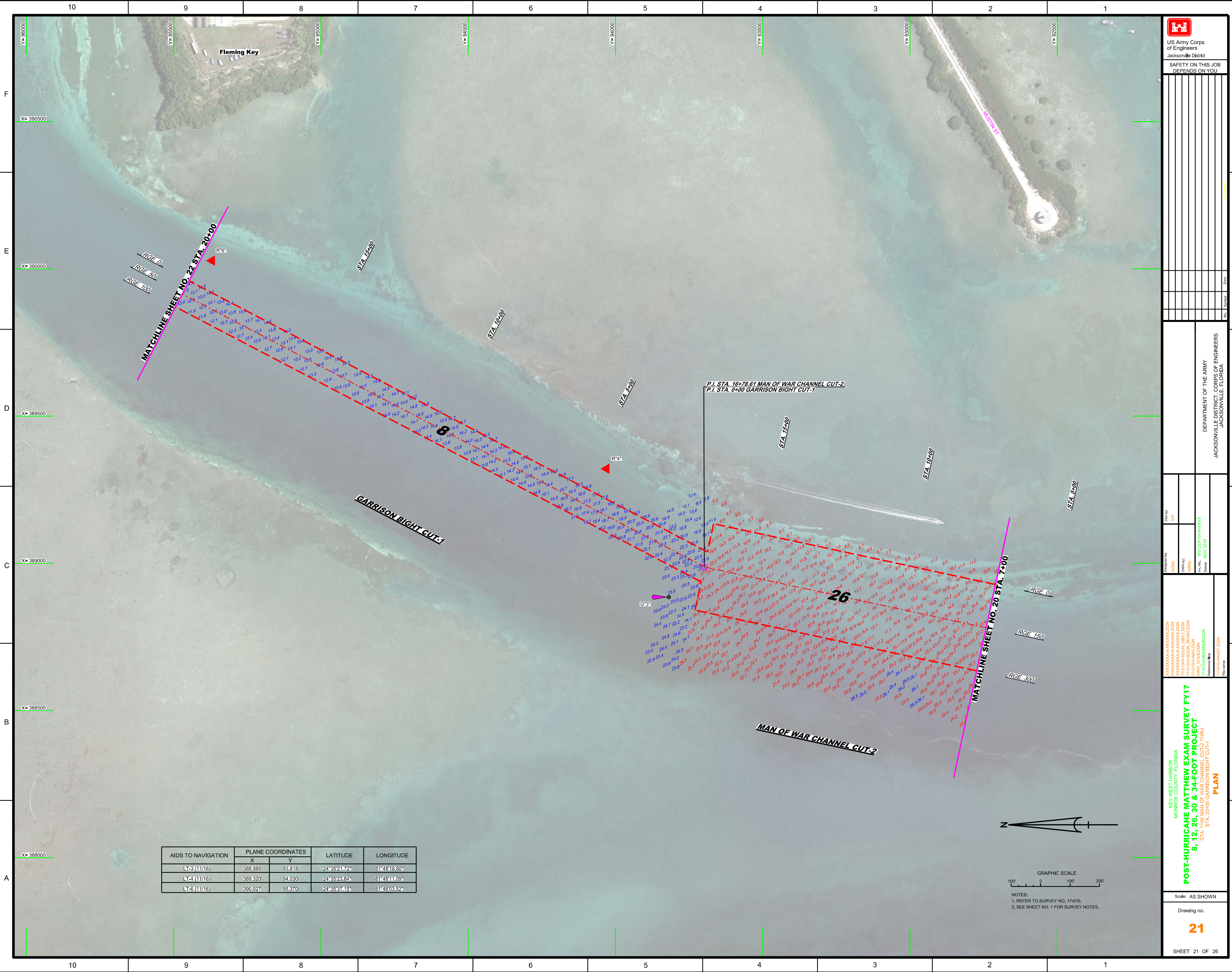
Drawn by: GHR
 Designated by: GHR
 Date: NOV 2016

KEY WEST HARBOR
MONROE COUNTY, FLORIDA
POST-HURRICANE MATTHEW EXAM SURVEY FY17
8, 12, 26, 30 & 34-FOOT PROJECT
 APPROACH TO AMMUNITION DOCK
PLAN


Scale: AS SHOWN

Drawing no.
19

SHEET 19 OF 26



AIDS TO NAVIGATION	PLANE COORDINATES		LATITUDE	LONGITUDE
	X	Y		
LT-3 (11/16)	388,885	93,818	24°35'21.72"	81°48'18.80"
LT-4 (11/16)	389,320	94,030	24°35'23.84"	81°48'11.09"
LT-6 (11/16)	390,027	95,970	24°35'37.15"	81°48'03.52"



US Army Corps of Engineers
Jacksonville District

SAFETY ON THIS JOB
DEPENDS ON YOU

DEPARTMENT OF THE ARMY
JACKSONVILLE DISTRICT, CORPS OF ENGINEERS
JACKSONVILLE, FLORIDA

Drawn by: GR

Checked by: GR

Designed by: GR

Scale: AS SHOWN

KEY WEST HARBOR
MONROE COUNTY, FLORIDA

POST-HURRICANE MATTHEW EXAM SURVEY FY17
8, 12, 26, 30 & 34-FOOT PROJECT
STA. 7+00 MAN OF WAR CHANNEL CUT-2 THRU
STA. 20+00 GARRISON BIGHT CUT-1

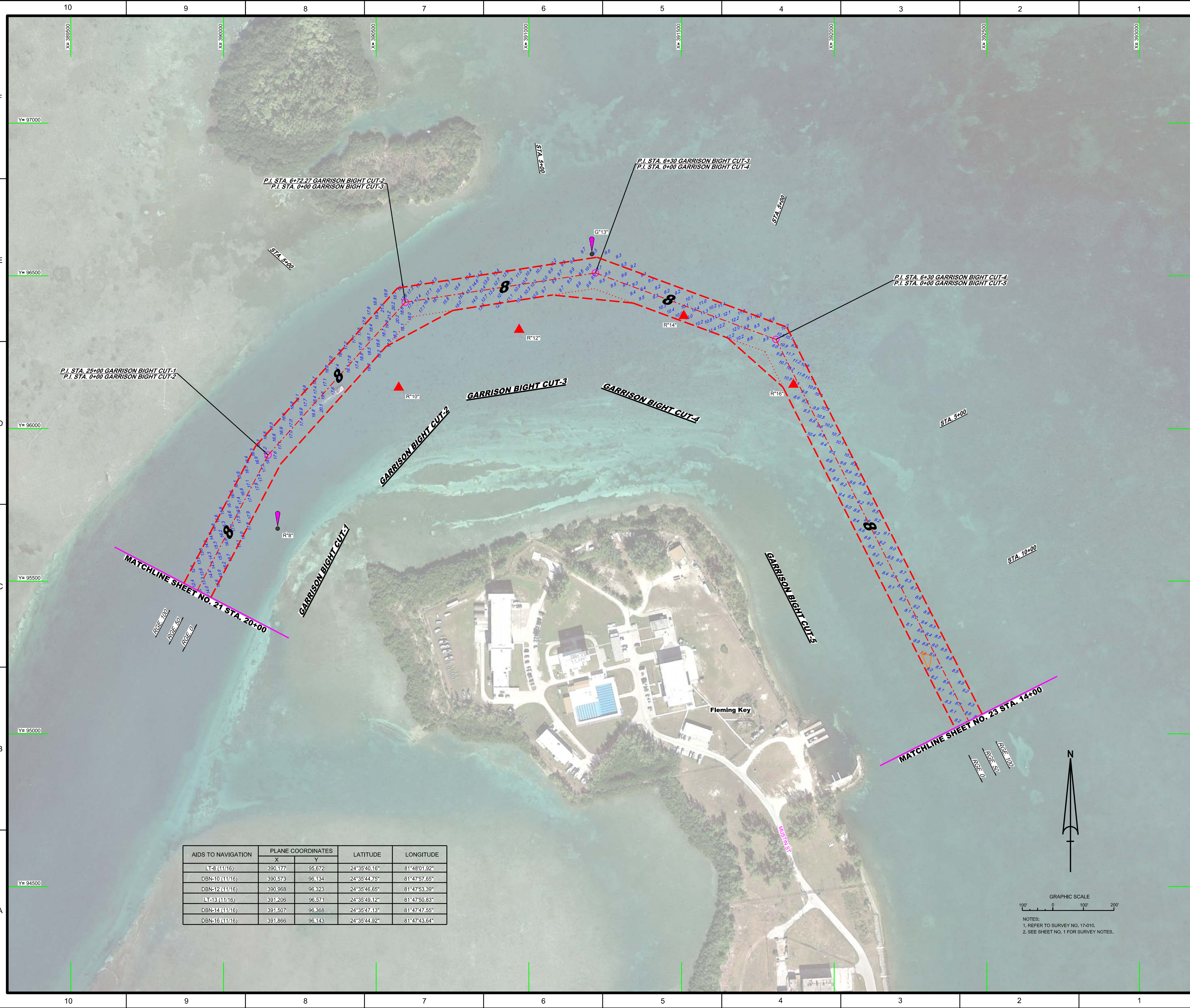
Reference File: 17-0104H42.LDGN
File Name: 17-0104H42.LDGN

Scale: AS SHOWN

Drawing no.

21

SHEET 21 OF 26



AIDS TO NAVIGATION	PLANE COORDINATES		LATITUDE	LONGITUDE
	X	Y		
LT-8 (11/16)	390,177	95,672	24°35'40.16"	81°48'01.92"
DBN-10 (11/16)	390,573	96,134	24°35'44.75"	81°47'57.65"
DBN-12 (11/16)	390,968	96,323	24°35'46.65"	81°47'53.39"
LT-13 (11/16)	391,206	96,571	24°35'49.12"	81°47'50.83"
DBN-14 (11/16)	391,507	96,368	24°35'47.13"	81°47'47.55"
DBN-16 (11/16)	391,866	96,143	24°35'44.92"	81°47'43.64"

