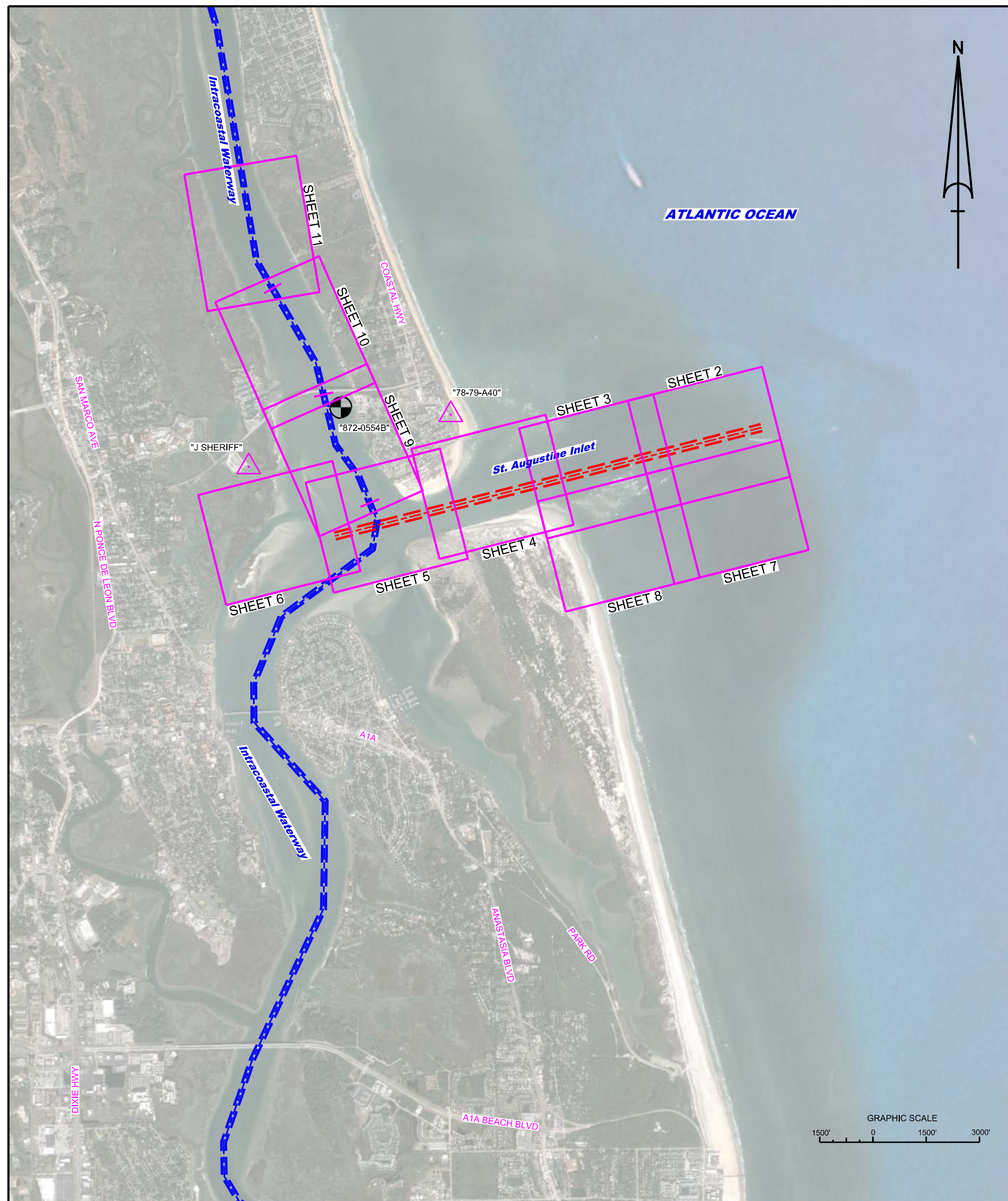
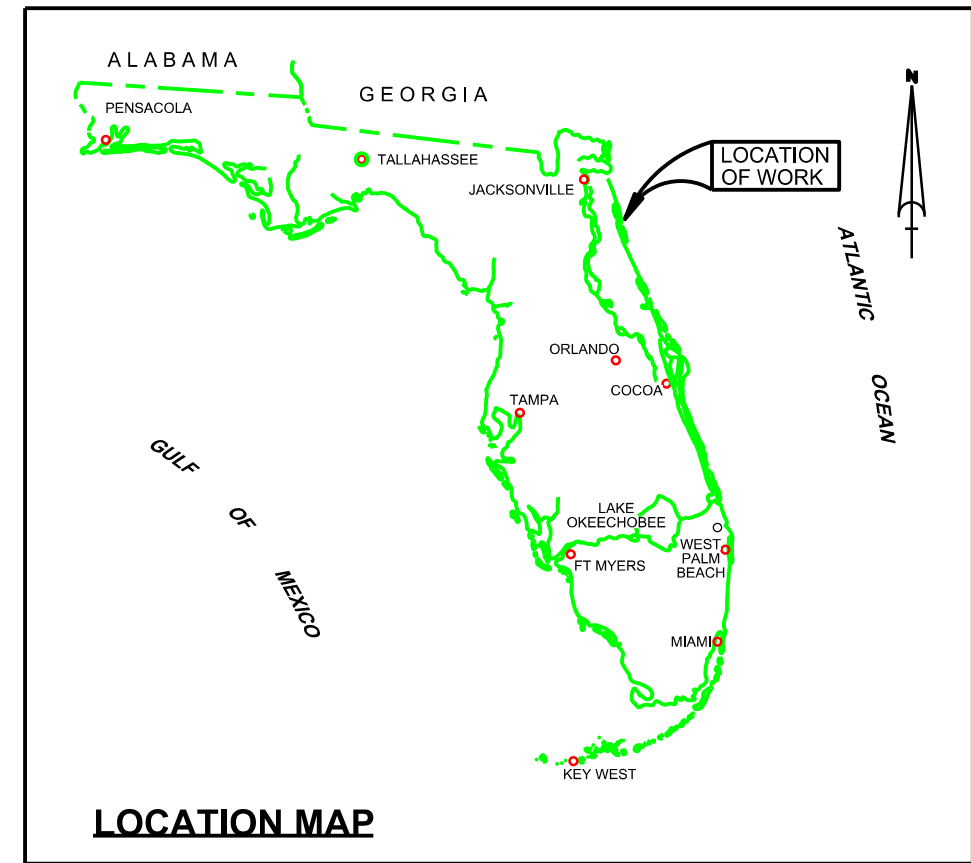


ST. AUGUSTINE INLET ST. JOHNS COUNTY, FLORIDA POST-HURRICANE MATTHEW EXAMINATION SURVEY FY17 16-FOOT PROJECT



SURVEY NOTES

- REFER TO SURVEY NO. 17-008.
- DEPTHS DEPICTED BY THIS SURVEY ARE REFERENCED TO MEAN LOWER LOW WATER (MLLW), TIDAL EPOCH 1983-2001, AS REPORTED BY THE NATIONAL OCEANIC AND ATMOSPHERIC ADMINISTRATION (NOAA). NOAA'S VDATUM MODEL WAS USED AND CALIBRATED TO THE PUBLISHED MLLW HEIGHTS OF THE BENCH MARKS ASSOCIATED WITH THE TIDE GAGE SITE SPECIFIED BELOW:

NOAA TIDAL STATION 872-0554, VILANO BEACH (ICWW) (PID: DL5712)
- TIDAL REDUCTIONS WERE OBTAINED UTILIZING A REAL-TIME KINEMATIC (RTK) GPS AND REFERENCED TO MLLW UTILIZING A HYPACK KINEMATIC TIDE DATUM (KTD) MODEL PRODUCED USING NOAA VDATUM. KTD FILE NAME IS: CAMDENG-NASSAU-DUVAL-STJOHNS-FLAGLER_01FEB2011.KTD.
- ALL ELEVATIONS ARE BELOW THE CHART DATUM UNLESS PRECEDED BY A (+) SIGN.
- PLANE COORDINATES ARE BASED ON THE TRANSVERSE MERCATOR PROJECTION FOR THE EAST ZONE OF FLORIDA AND REFERENCED TO NORTH AMERICAN DATUM OF 1983 (NAD83).
- ALL STATIONING REFERS TO THE CENTERLINE OF THE CHANNEL.
- THIS SURVEY WAS PERFORMED USING REAL-TIME KINEMATIC (RTK) GPS POSITIONING WITH THE FOLLOWING REFERENCE BASE LOCATION:

REFERENCE BASE LOCATED AT "J SHERIFF" (PID: BBCJ50)

TIDE STAFF LOCATED AT "872 0554B" (PID: DL5712)
- VERTICAL MEASUREMENTS WERE MADE USING A ROSS MODEL 835B DUAL-FREQUENCY 28/200 KHZ SMARTSOUNDER WITH A SINGLE-BEAM TRANSDUCER. ALL DEPTHS SHOWN ARE IN HIGH FREQUENCY.

VESSEL	DATE OF SURVEY	CUT
SB-46	07 NOV 2016	SJ28A, SJ29, SJ29A, SJ30, SJ30A, E.C.
SB-46	09 NOV 2016	SJ28, ENTRANCE CHANNEL
- AIDS TO NAVIGATION WERE COLLECTED DURING THIS SURVEY.
- THE INFORMATION DEPICTED ON THIS MAP REPRESENTS THE RESULTS OF SURVEYS MADE ON THE DATES INDICATED ABOVE AND CAN ONLY BE CONSIDERED AS INDICATING THE GENERAL CONDITIONS AT THAT TIME. THIS CHART IS SOLELY FOR THE DISTRIBUTION OF AVAILABLE DEPTHS AT THE TIME OF THE SURVEY.
- SURVEY ACCURACY PERFORMANCE STANDARDS, QUALITY CONTROL, AND QUALITY ASSURANCE REQUIREMENTS WERE FOLLOWED DURING THIS SURVEY IN ACCORDANCE WITH USACE EM 1110-2-1003, HYDROGRAPHIC SURVEYING, 30 NOV 13.

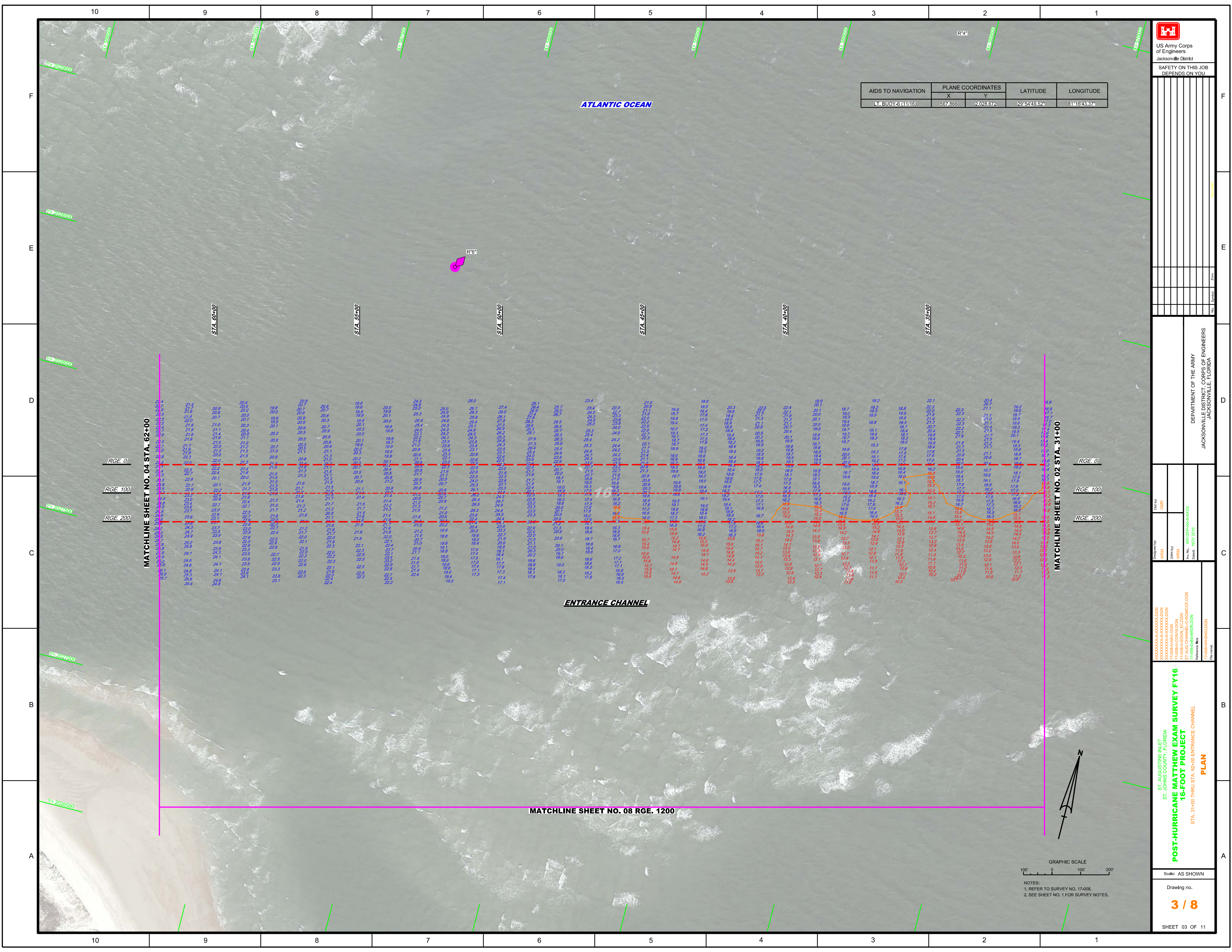
LEGEND	
	MONUMENT
	LIGHTED BEACON
	GREEN DAY BEACON
	RED DAY BEACON
	RED LIGHTED BUOY
	GREEN LIGHTED BUOY
	CAN BUOY
	NUN BUOY
	TIDE STAFF
	PROJECT DEPTH

US Army Corps of Engineers
Jacksonville District
SAFETY ON THIS JOB
DEPENDS ON YOU

DEPARTMENT OF THE ARMY
JACKSONVILLE DISTRICT, CORPS OF ENGINEERS
JACKSONVILLE, FLORIDA

ST. AUGUSTINE INLET
ST. JOHNS COUNTY, FLORIDA
POST-HURRICANE MATTHEW EXAM SURVEY FY16
16-FOOT PROJECT
INDEX, LOCATION AND VICINITY
MAP

Scale: AS SHOWN
Drawing no.
1 / 8
SHEET 01 OF 11



ATLANTIC OCEAN


ENTRANCE CHANNEL

MATCHLINE SHEET NO. 08 RGE. 1200

MATCHLINE SHEET NO. 04 STA. 62+00

MATCHLINE SHEET NO. 02 STA. 31+00

AIDS TO NAVIGATION	PLANE COORDINATES		LATITUDE	LONGITUDE
	X	Y		
LT. BUOY-61 (11116)	567,866	2,028,672	29°54'49.52"	81°16'43.37"



US Army Corps of Engineers
Jacksonville District

SAFETY ON THIS JOB
DEPENDS ON YOU

DEPARTMENT OF THE ARMY
JACKSONVILLE DISTRICT, CORPS OF ENGINEERS
JACKSONVILLE, FLORIDA

Drawn by: GHR
Checked by: GHR
Date: NOV 2016

ST. AUGUSTINE INLET
ST. JOHNS COUNTY, FLORIDA
POST-HURRICANE MATTHEW EXAM SURVEY FY16
16-FOOT PROJECT
STA. 31+00 THRU STA. 62+00 ENTRANCE CHANNEL
PLAN

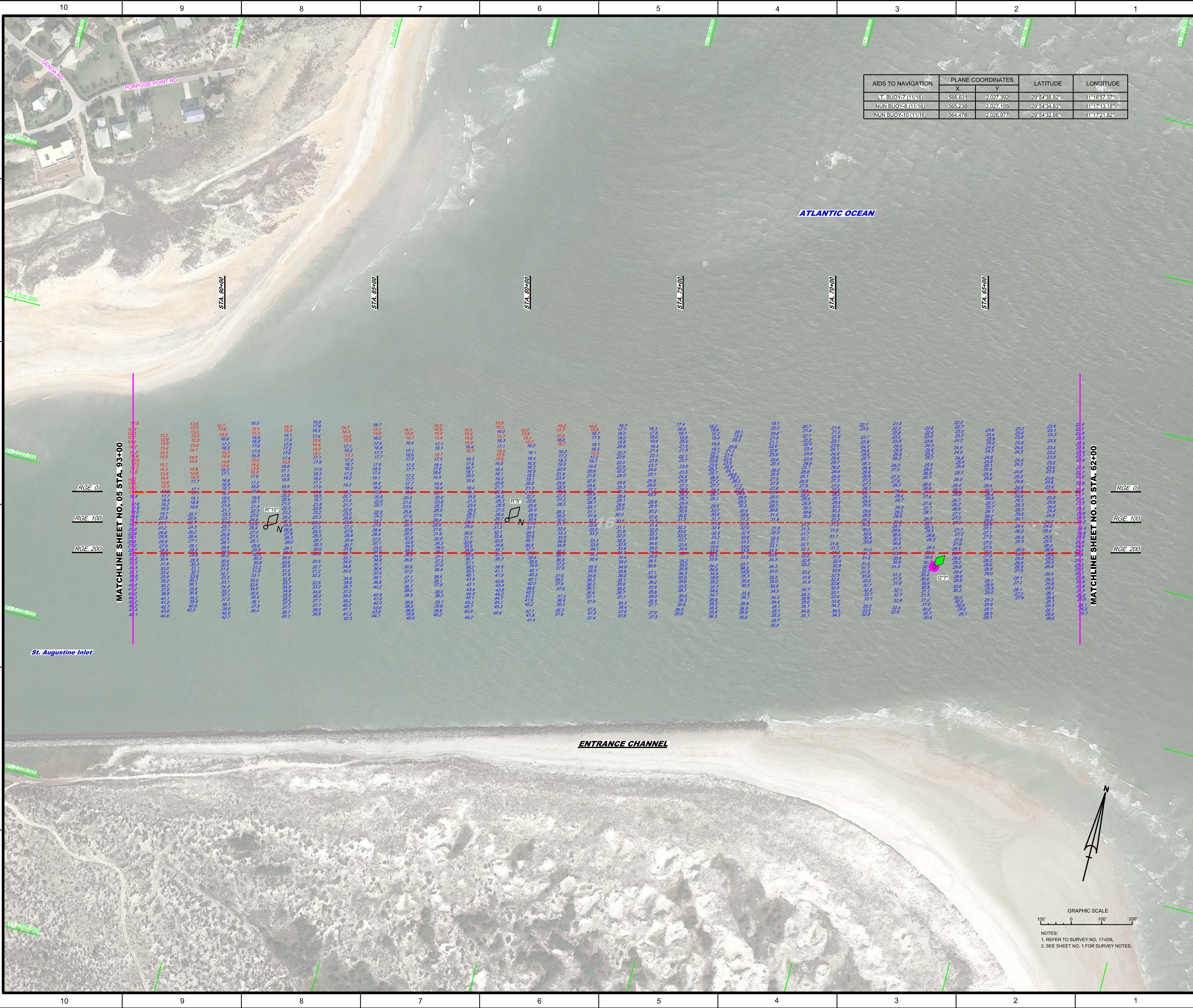
Scale: AS SHOWN

Drawing no.
3 / 8

SHEET 03 OF 11



NOTES:
1. REFER TO SURVEY NO. 17-008.
2. SEE SHEET NO. 1 FOR SURVEY NOTES.



AIDS TO NAVIGATION	PLANE COORDINATES		LATITUDE	LONGITUDE
	X	Y		
LT BUOY-7 (11/16)	566.631	2,027.392	29°54'38.82"	81°16'57.37"
NUN BUOY-8 (11/16)	565.238	2,027.195	29°54'34.83"	81°17'13.18"
NUN BUOY-10 (11/16)	564.478	2,026.977	29°54'32.66"	81°17'21.82"

MATCHLINE SHEET NO. 05 STA. 93+00

MATCHLINE SHEET NO. 03 STA. 62+00

RGE. 0

RGE. 100

RGE. 200

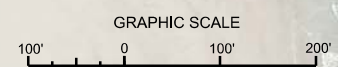
RGE. 0

RGE. 100


RGE. 200

ENTRANCE CHANNEL

St. Augustine Inlet



NOTES:
1. REFER TO SURVEY NO. 17-008.
2. SEE SHEET NO. 1 FOR SURVEY NOTES.



US Army Corps of Engineers
Jacksonville District

SAFETY ON THIS JOB
DEPENDS ON YOU

DEPARTMENT OF THE ARMY
JACKSONVILLE DISTRICT, CORPS OF ENGINEERS
JACKSONVILLE, FLORIDA

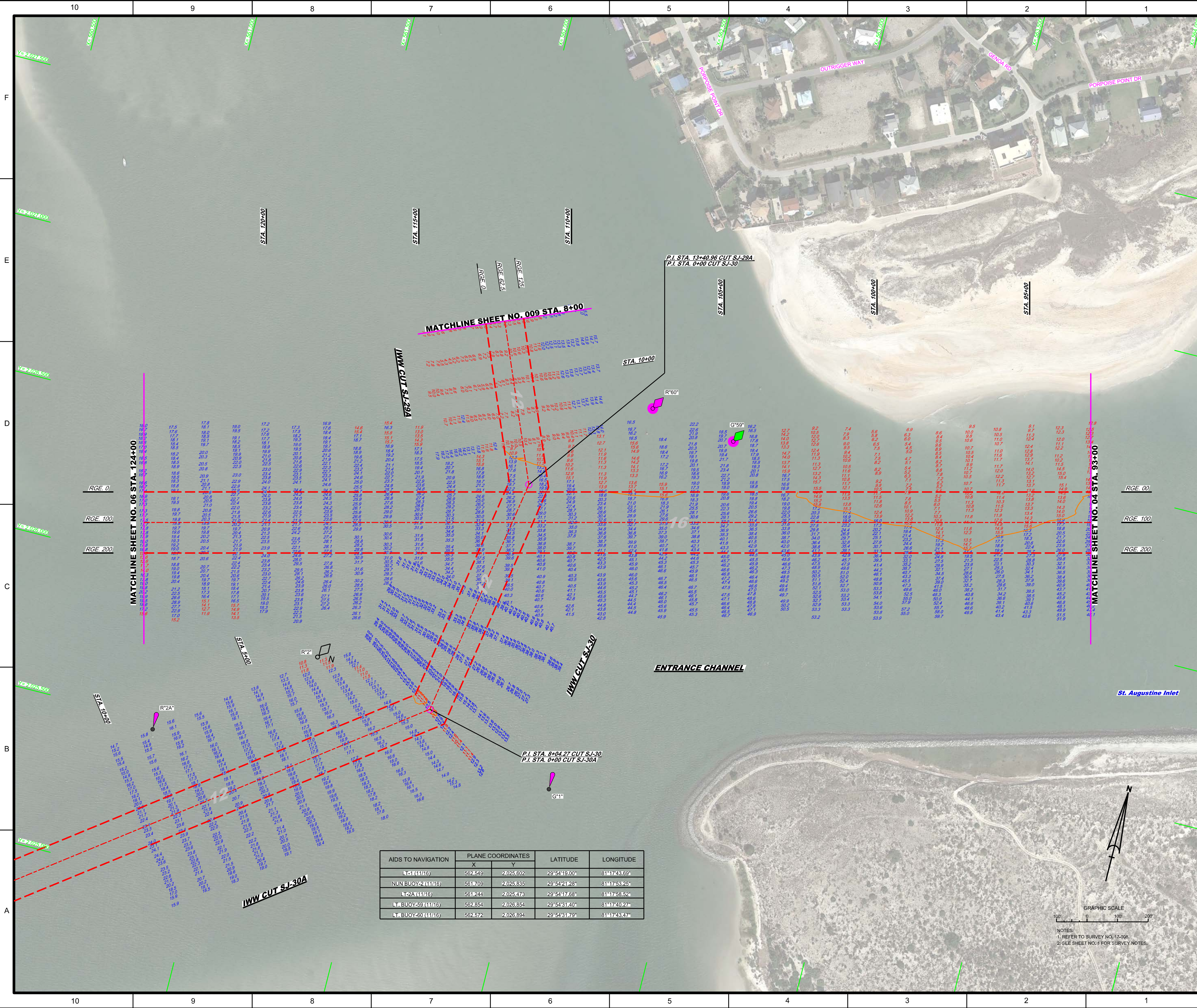
Designed by: WRM
Checked by: WRM
Drawn by: WRM
Date: NOV 2016

ST AUGUSTINE INLET
ST. JOHNS COUNTY, FLORIDA
POST-HURRICANE MATTHEW EXAM SURVEY FY16
16-FOOT PROJECT
STA. 62+00 THRU STA. 93+00 ENTRANCE CHANNEL
PLAN

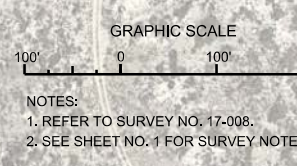
Scale: AS SHOWN

Drawing no.
4 / 8

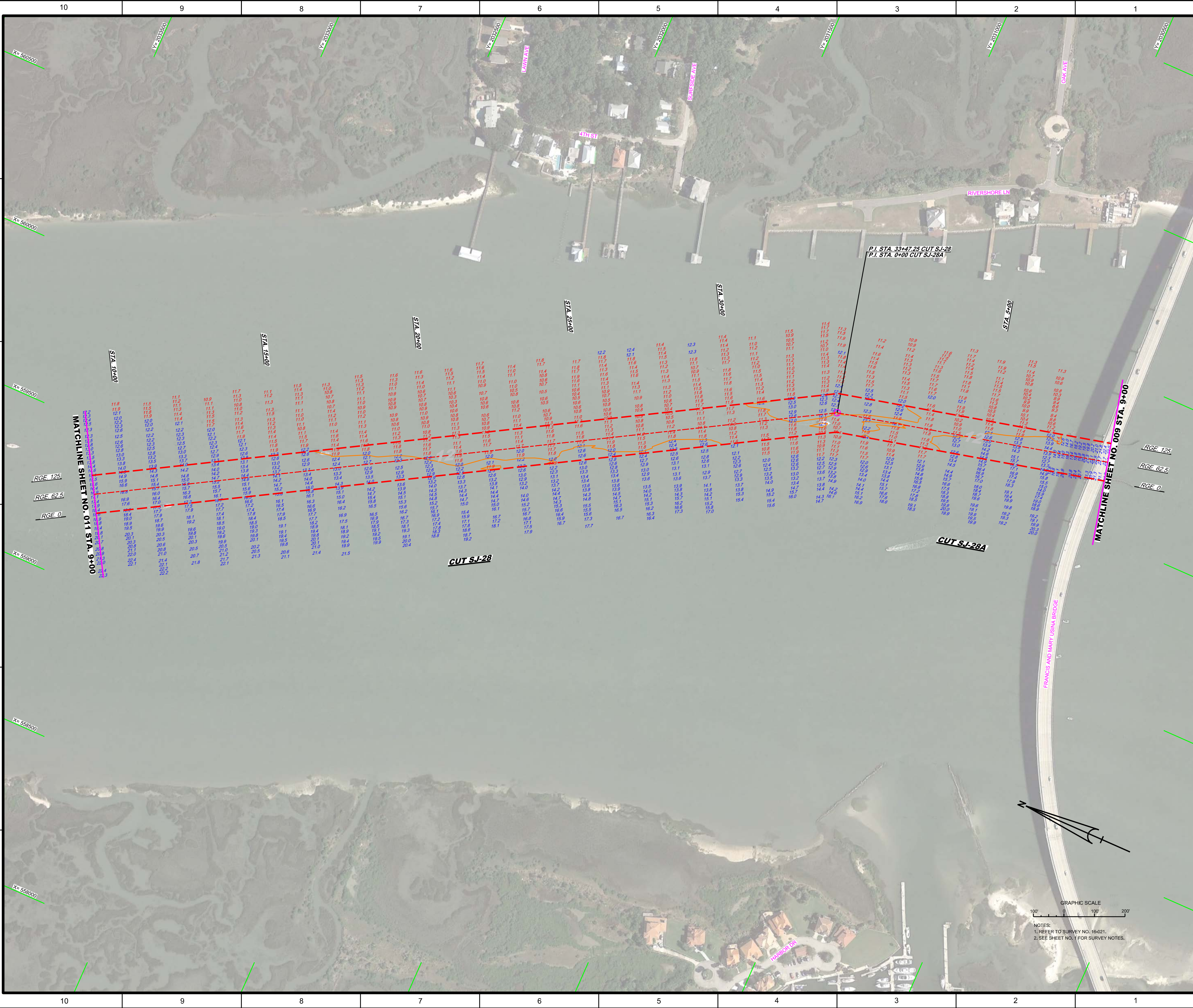
SHEET 04 OF 11




AIDS TO NAVIGATION	X	Y	LATITUDE	LONGITUDE
LT-11 (11/16)	562.549	2,025.602	29°54'19.00"	81°17'43.69"
NUN BUOY-21 (11/16)	561.709	2,025.835	29°54'21.28"	81°17'53.25"
LT-2A (11/16)	561.244	2,025.473	29°54'17.68"	81°17'58.52"
LT BUOY-59 (11/16)	562.854	2,026.854	29°54'31.40"	81°17'40.27"
LT BUOY-50 (11/16)	562.572	2,026.894	29°54'31.79"	81°17'43.47"



NOTES:
 1. REFER TO SURVEY NO. 17-008.
 2. SEE SHEET NO. 1 FOR SURVEY NOTES.





US Army Corps of Engineers
Jacksonville District

SAFETY ON THIS JOB
DEPENDS ON YOU

DEPARTMENT OF THE ARMY
JACKSONVILLE DISTRICT, CORPS OF ENGINEERS
JACKSONVILLE, FLORIDA

Checked by: GHR Drawn by: WRM Designated by: WRM	Date: 06/20/16 Date: 06/20/16 Date: 06/20/16	File No: W12255-000-0000 Date: NOV 2016
--	--	--

ST. AUGUSTINE INLET
ST. JOHN'S COUNTY, FLORIDA

POST-HURRICANE MATTHEW EXAM SURVEY FY16
16-FOOT PROJECT

STA. 9+00 CUT SJ-28 THRU STA. 9+00 CUT SJ-28A

PLAN

Scale: AS SHOWN

Drawing no. **7 / 8**

SHEET 10 OF 11



NOTES:
1. REFER TO SURVEY NO. 16-021.
2. SEE SHEET NO. 1 FOR SURVEY NOTES.

