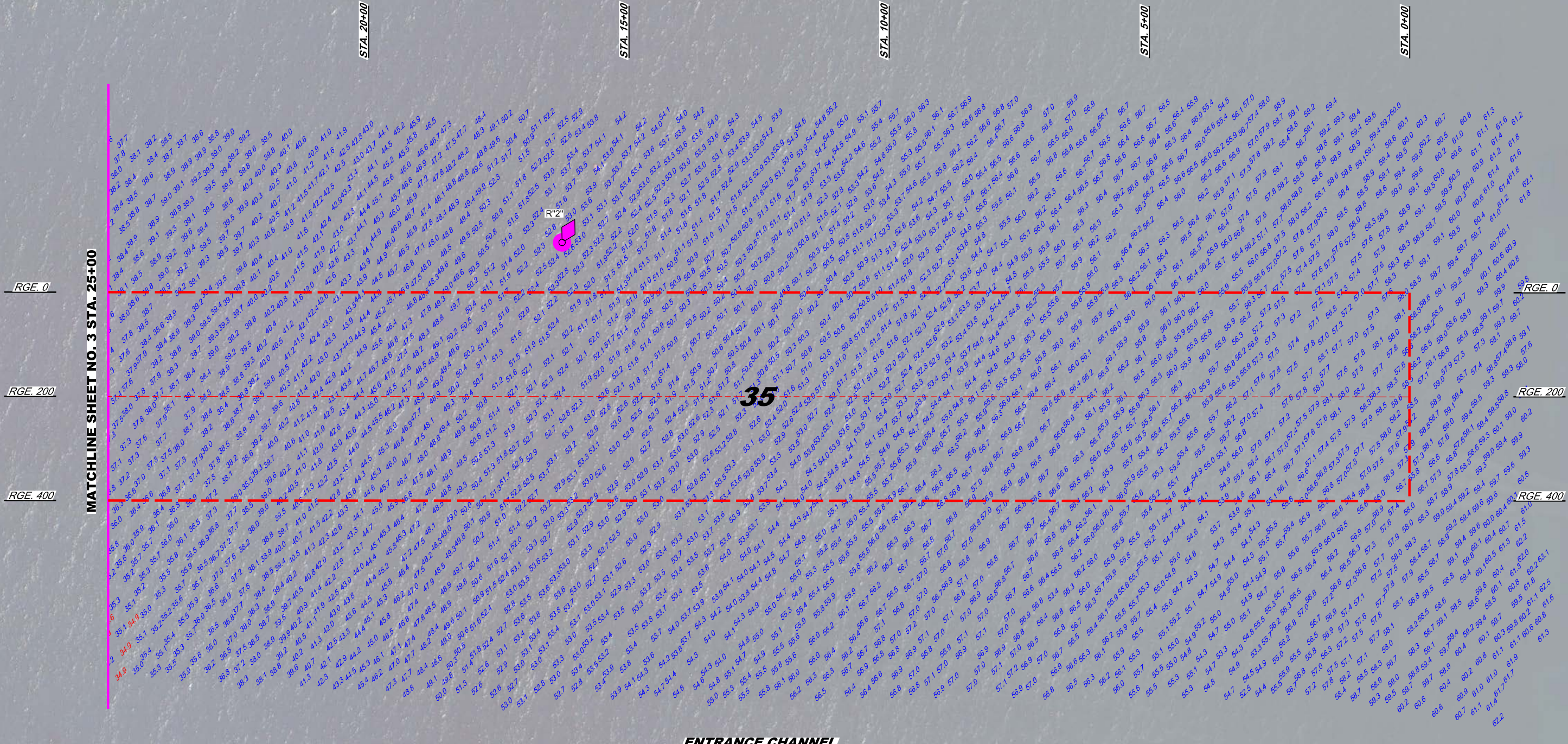
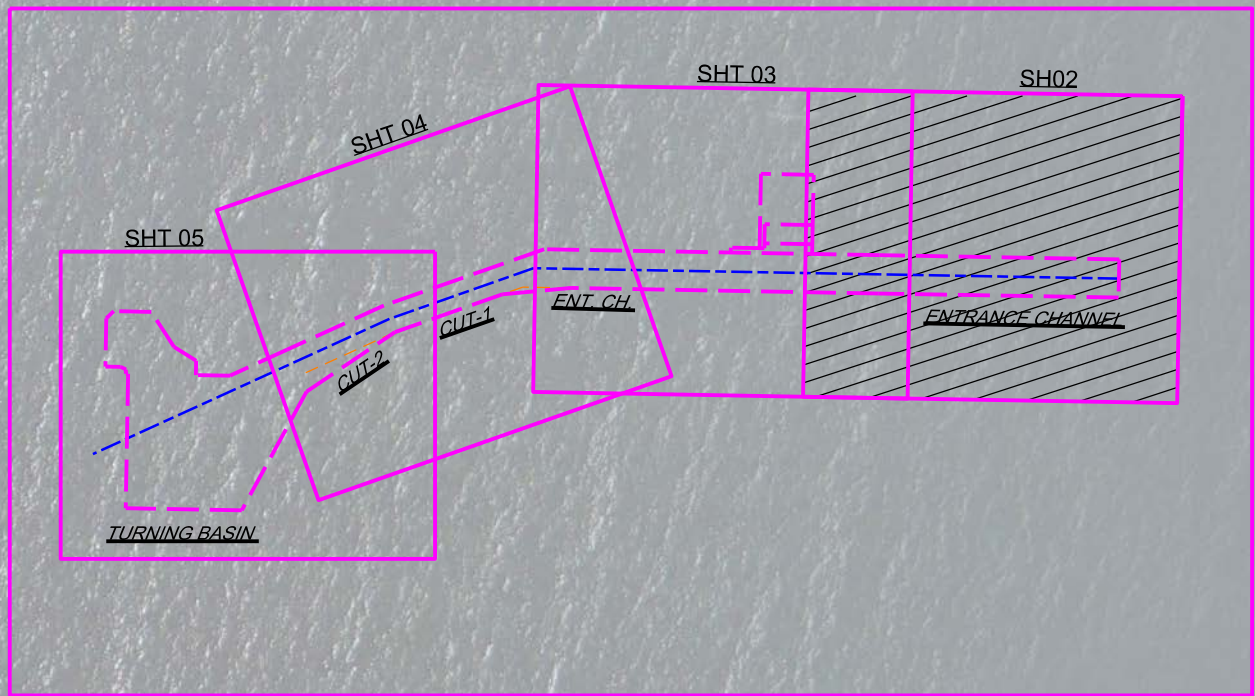
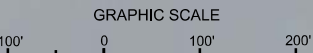


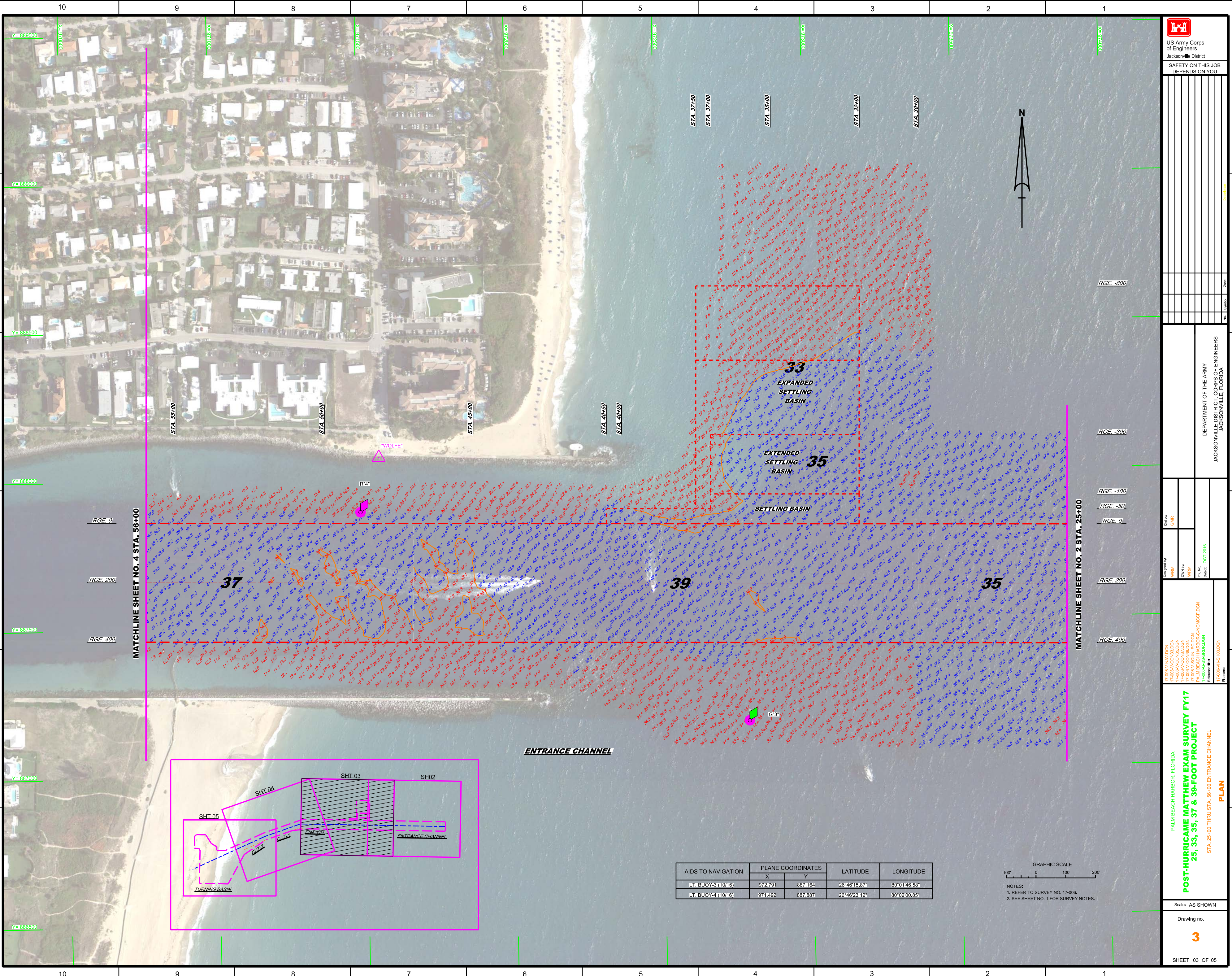
AIDS TO NAVIGATION	PLANE COORDINATES		LATITUDE	LONGITUDE
	X	Y		
LT. BUOY-2 (1016)	974,743	887,888	26°46'22.88"	80°01'24.99"



ENTRANCE CHANNEL



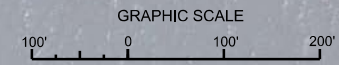
NOTES:
1. REFER TO SURVEY NO. 17-006.
2. SEE SHEET NO. 1 FOR SURVEY NOTES.



MATCHLINE SHEET NO. 4 STA. 56+00

MATCHLINE SHEET NO. 2 STA. 25+00

AIDS TO NAVIGATION	PLANE COORDINATES		LATITUDE	LONGITUDE
	X	Y		
LT. BUOY-3 (10/16)	972.791	887.164	26°46'15.87"	80°0'146.58"
LT. BUOY-4 (10/16)	971.492	887.887	26°46'24.12"	80°0'200.85"



NOTES:
 1. REFER TO SURVEY NO. 17-006.
 2. SEE SHEET NO. 1 FOR SURVEY NOTES.

US Army Corps
of Engineers
Jacksonville District

SAFETY ON THIS JOB
DEPENDS ON YOU

DESIGNED BY: WRM
 CHECKED BY: GHR
 DATE: OCT 2018

DEPARTMENT OF THE ARMY
 JACKSONVILLE DISTRICT, CORPS OF ENGINEERS
 JACKSONVILLE, FLORIDA

PROJECT: PALM BEACH HARBOR, FLORIDA
 POST-HURRICANE MATTHEW EXAM SURVEY FY17
 25, 33, 35, 37 & 39-FOOT PROJECT

PLAN
 STA. 25+00 THRU STA. 36+00 ENTRANCE CHANNEL

Scale: AS SHOWN

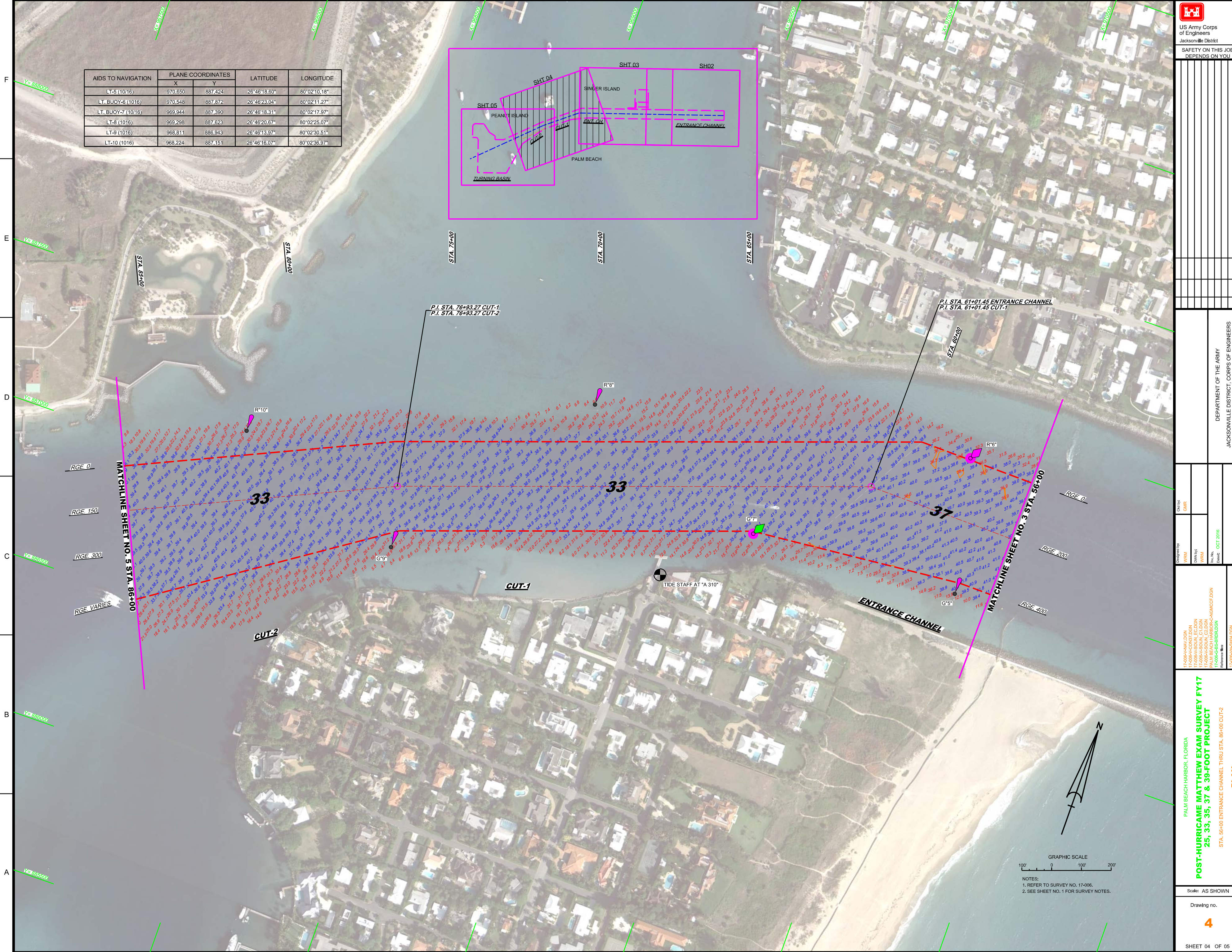
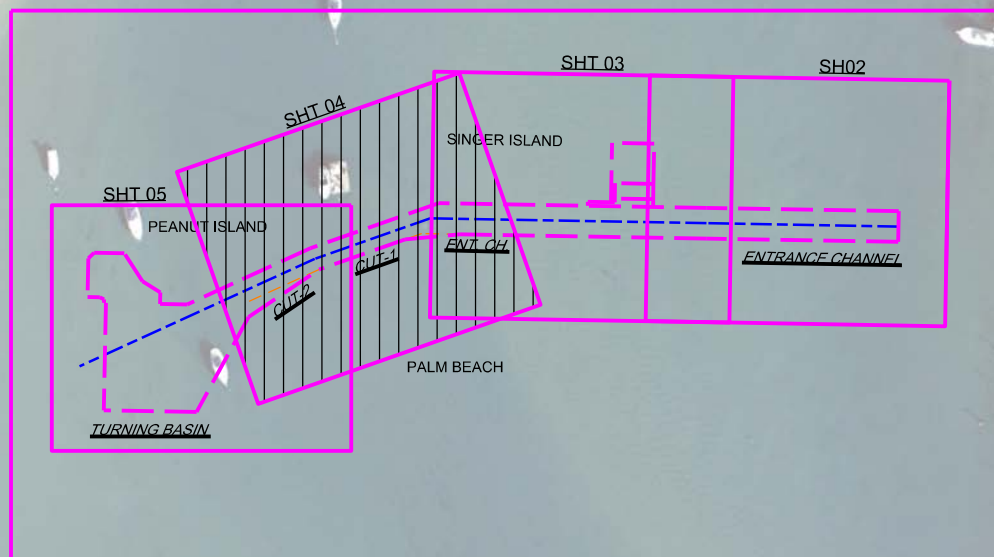
Drawing no.


3

SHEET 03 OF 05

10 9 8 7 6 5 4 3 2 1

AIDS TO NAVIGATION	PLANE COORDINATES		LATITUDE	LONGITUDE
	X	Y		
LT-5 (10/16)	970.650	887.424	26°46'18.60"	80°02'10.18"
LT BUOY-6 (10/16)	970.548	887.872	26°46'23.04"	80°02'11.27"
LT BUOY-7 (10/16)	969.944	887.390	26°46'18.31"	80°02'17.97"
LT-8 (10/16)	969.298	887.623	26°46'20.67"	80°02'25.07"
LT-9 (10/16)	968.811	886.943	26°46'13.97"	80°02'30.51"
LT-10 (10/16)	968.224	887.151	26°46'16.07"	80°02'36.97"





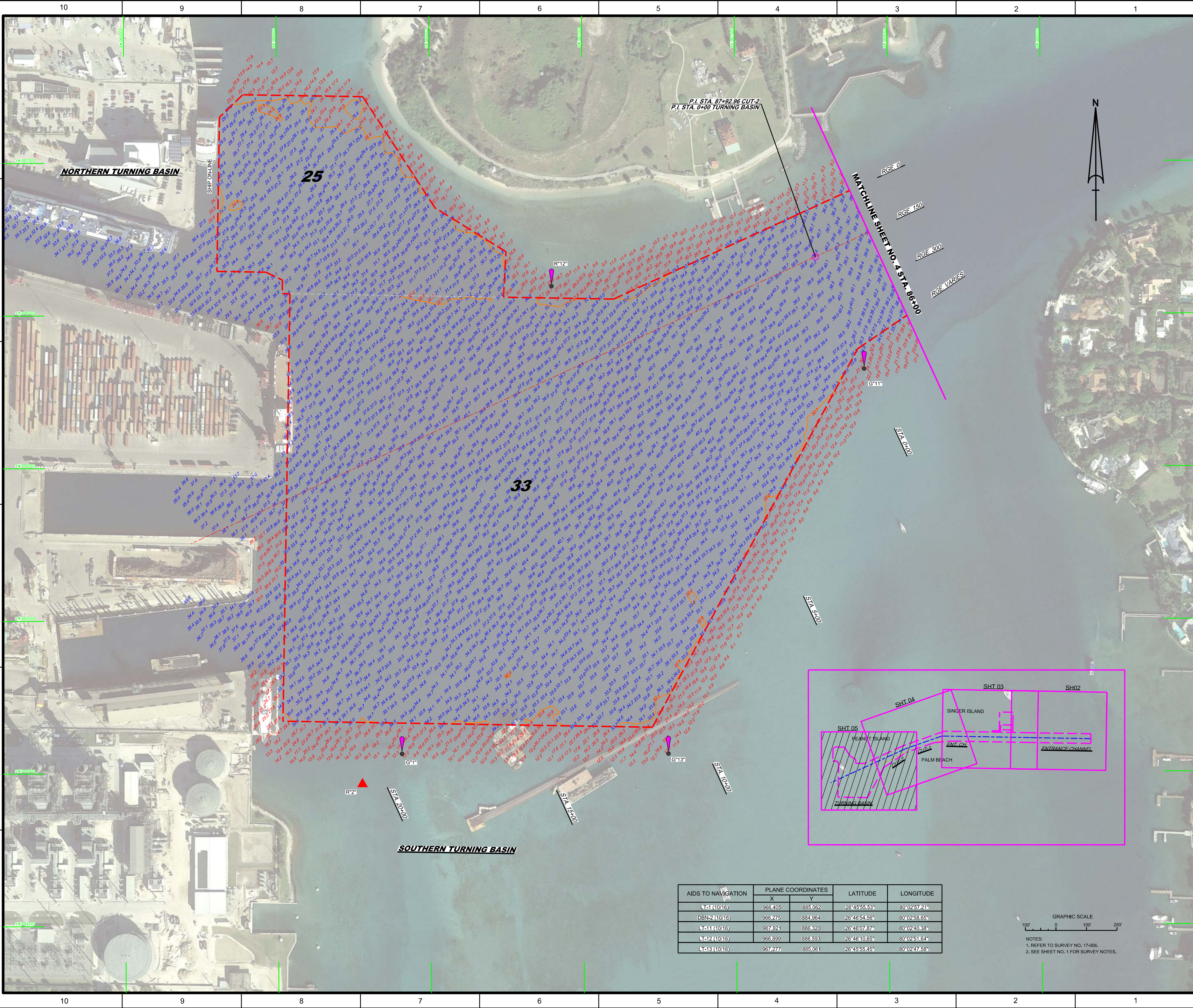
US Army Corps of Engineers
Jacksonville District
SAFETY ON THIS JOB DEPENDS ON YOU

DEPARTMENT OF THE ARMY
JACKSONVILLE DISTRICT, CORPS OF ENGINEERS
JACKSONVILLE, FLORIDA

Project: **POST-HURRICANE MATTHEW EXAM SURVEY FY17**
25, 33, 35, 37 & 39-FOOT PROJECT
 STA. 86+00 ENTRANCE CHANNEL THRU STA. 86+00 CUT-2

Scale: AS SHOWN
 Drawing no. **4**
 SHEET 04 OF 05

PLANNING



P.I. STA. 87+92.96 CUT-2
P.I. STA. 0+00 TURNING BASIN

NORTHERN TURNING BASIN

25

33

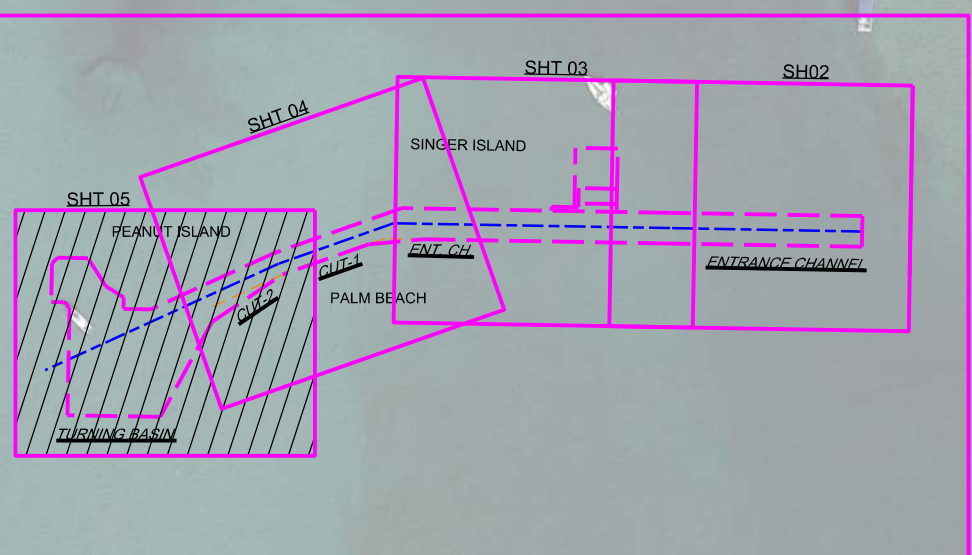
SOUTHERN TURNING BASIN

RGE 0
RGE 150
RGE 300
RGE VARIES

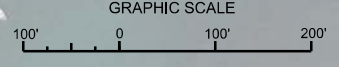
STA 0+00

STA 0+00


STA 10+00



AIDS TO NAVIGATION	PLANE COORDINATES		LATITUDE	LONGITUDE
	X	Y		
LT-1 (10/16)	966,405	885,062	26°45'55.53"	80°02'57.21"
DBN-2 (10/16)	966,275	884,964	26°46'07.87"	80°02'58.65"
LT-11 (10/16)	967,921	886,320	26°46'07.87"	80°02'40.38"
LT-12 (10/16)	966,899	886,593	26°46'10.65"	80°02'51.64"
LT-13 (10/16)	967,277	885,061	26°45'55.45"	80°02'47.58"



NOTES:
1. REFER TO SURVEY NO. 17-006.
2. SEE SHEET NO. 1 FOR SURVEY NOTES.



US Army Corps of Engineers
Jacksonville District
SAFETY ON THIS JOB
DEPENDS ON YOU

DEPARTMENT OF THE ARMY
JACKSONVILLE DISTRICT, CORPS OF ENGINEERS
JACKSONVILLE, FLORIDA

Designed by: WRM
Checked by: GHR
Drawn by: WRM
Field Notes: WRM
Date: OCT 2016

Reference files:
17-006-CONCLUSION
17-006-AVAIL
17-006-AVAIL
17-006-AVAIL
17-006-CONCLUSION
17-006-CONCLUSION
17-006-CONCLUSION

POST-HURRICANE MATTHEW EXAM SURVEY FY17
25, 33, 35, 37 & 39-FOOT PROJECT
STA. 86+00 CUT-2 THRU TURNING BASIN
PLAN

Scale: AS SHOWN

Drawing no.

5

SHEET 05 OF 05