

AIDS TO NAVIGATION	PLANE COORDINATES		LATITUDE	LONGITUDE
	X	Y		
BUOY 35 (1116)	496592	2202163	83°23'24.5"	81°02'22.00"
C 38 (1116)	496616	2202363	83°23'32.9"	81°02'33.17"
BUOY 37 (1116)	496712	2202200	83°23'57.4"	81°02'33.15"

BLOUNT ISLAND

BACK RIVER

MATCHLINE SHEET NO. 050 STA. 14+00

P.I. STA. 33+94.49 CUT-41
P.I. STA. 0+00 CUT-42

ST. JOHNS RIVER

CUT-1

MATCHLINE SHEET NO. 024 STA. 13+00

MATCHLINE SHEET NO. 022 STA. 19+00

CALYPSO ISLAND

CUT-42

STA. 3+64.95 (CUT-42)
RGE. 489+89

STA. 32+42.08 (CUT-41)
RGE. 420+22

CUT-41

US Army Corps of Engineers
Jacksonville District
SAFETY ON THIS JOB
DEPENDS ON YOU

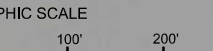
DEPARTMENT OF THE ARMY
JACKSONVILLE DISTRICT, CORPS OF ENGINEERS
JACKSONVILLE, FLORIDA

Call by: GHR
Designed by: WRM
Drawn by: WRM
Checked by: WRM
Date: JUN 2017

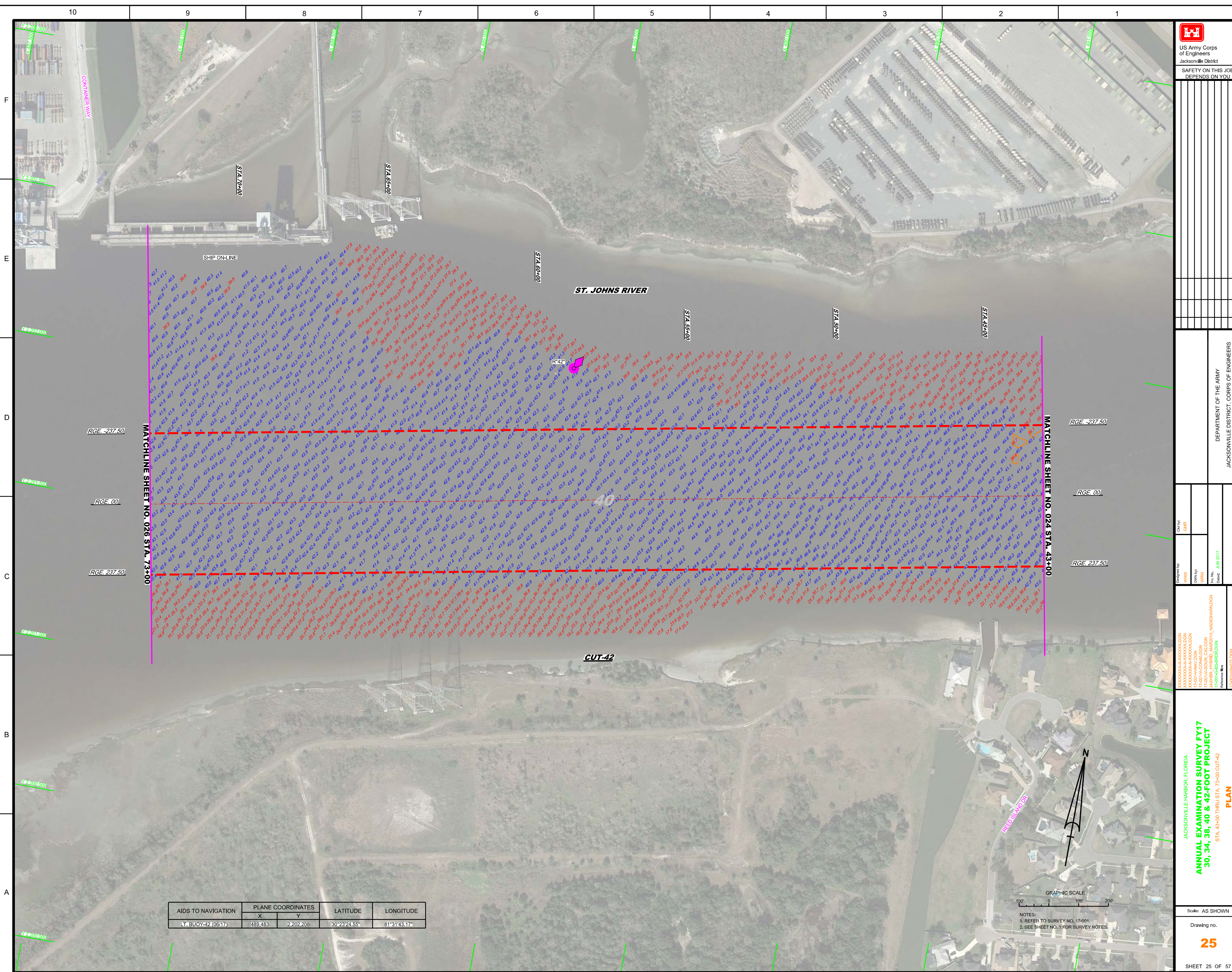
17-00-CAV-DON
17-00-CAV-CON
17-00-CAV-STR
17-00-CAV-CTA-DON
17-00-CAV-CTA-CON
17-00-CAV-SOIL-CAL-DON
17-00-CAV-SOIL-CAL-CON
17-00-CAV-STR-STR-DON
17-00-CAV-STR-STR-CON

JACKSONVILLE HARBOR, FLORIDA
ANNUAL EXAMINATION SURVEY FY17
30, 34, 38, 40 & 42-FOOT PROJECT
STA. 19+00 CUT-41 THRU STA 13+00 CUT-42 &
STA. 0+00 THRU STA. 14+00 CUT-4A
PLAN

Scale: AS SHOWN
Drawing no. **23**
SHEET 23 OF 57



NOTES:
1. REFER TO SURVEY NO. 17-001.
2. SEE SHEET NO. 1 FOR SURVEY NOTES.



F
E
D
C
B
A

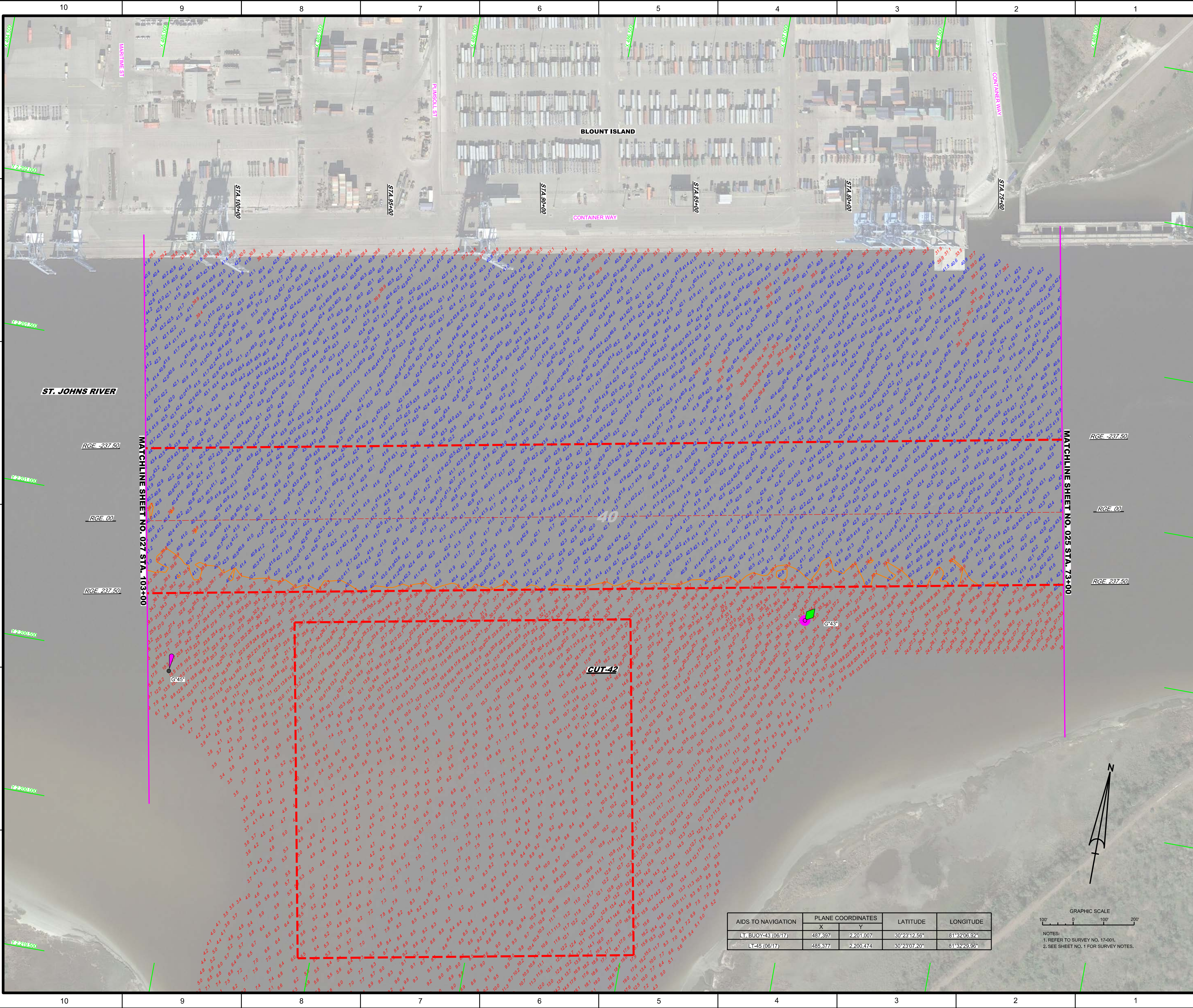
10 9 8 7 6 5 4 3 2 1


AIDS TO NAVIGATION	PLANE COORDINATES		LATITUDE	LONGITUDE
	X	Y		
LT. BUOY-42 (06/17)	489.483	2,202.208	30°23'24.55"	81°31'43.17"



NOTES:
1. REFER TO SURVEY NO. 17-001.
2. SEE SHEET NO. 1 FOR SURVEY NOTES.

 US Army Corps of Engineers Jacksonville District SAFETY ON THIS JOB DEPENDS ON YOU		DESIGNED BY: JPM/ML CHECKED BY: JPM/ML DATE: JUN 2017	DRAWN BY: JPM/ML DATE: JUN 2017
DEPARTMENT OF THE ARMY JACKSONVILLE DISTRICT CORPS OF ENGINEERS JACKSONVILLE, FLORIDA			
Title Block information including sheet number and project name.			
ANNUAL EXAMINATION SURVEY FY17 30, 34, 38, 40 & 42-FOOT PROJECT STA. 43+00 THRU STA. 73+00 CUT-42 PLAN		SHEET 25 OF 57	





US Army Corps of Engineers
Jacksonville District
SAFETY ON THIS JOB
DEPENDS ON YOU

DESIGNED BY: WRM
CHECKED BY: GHR
DATE: JUN 2017

PROJECT: ANNUAL EXAMINATION SURVEY FY17
30, 34, 38, 40 & 42-FOOT PROJECT
STATION: STA. 73+00 THRU STA. 103+00 CUT-42

DEPARTMENT OF THE ARMY
JACKSONVILLE DISTRICT, CORPS OF ENGINEERS
JACKSONVILLE, FLORIDA

PROJECT: ANNUAL EXAMINATION SURVEY FY17
30, 34, 38, 40 & 42-FOOT PROJECT
STATION: STA. 73+00 THRU STA. 103+00 CUT-42

PLAN

Scale: AS SHOWN

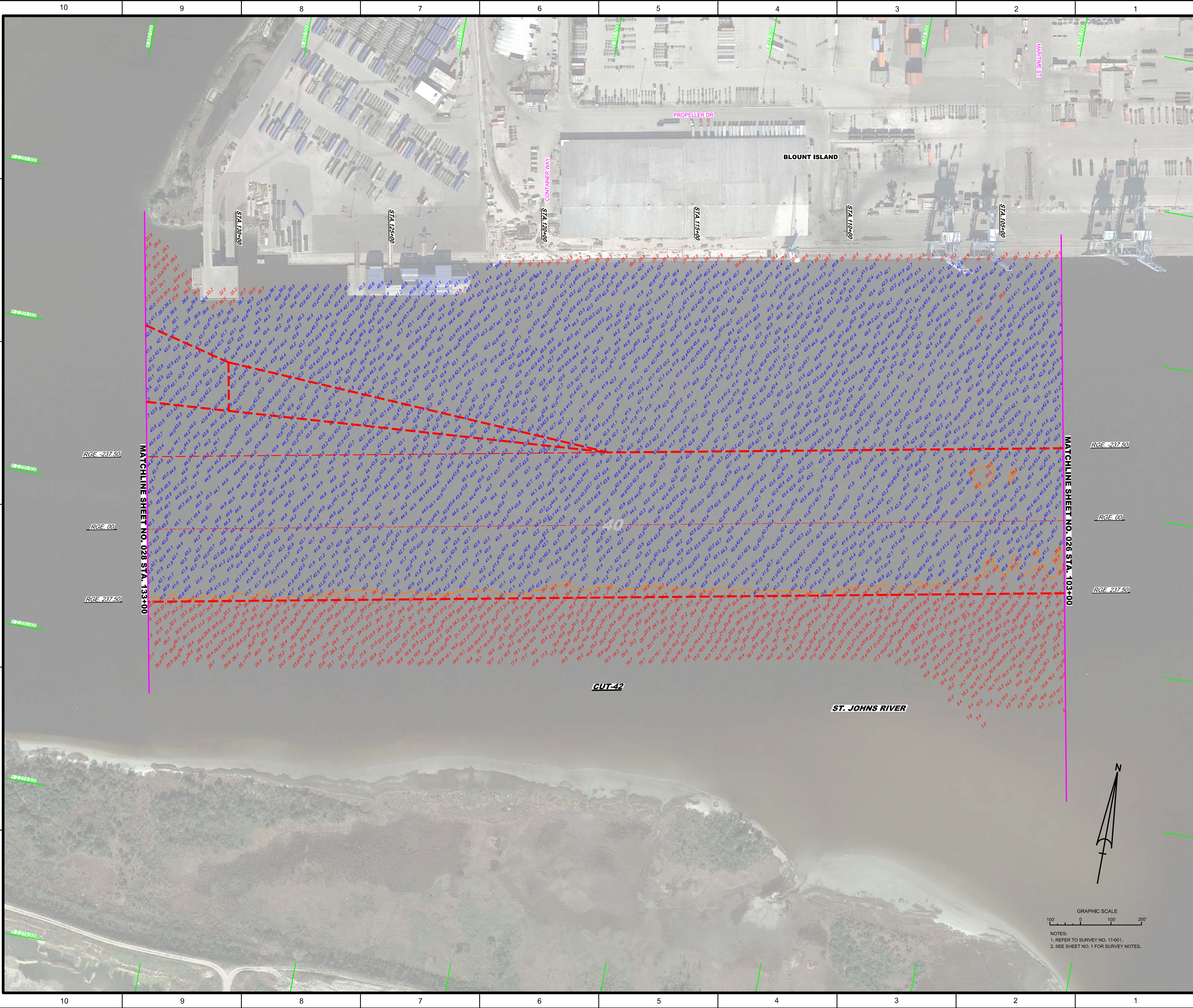
Drawing No. 26


SHEET 26 OF 57

AIDS TO NAVIGATION	PLANE COORDINATES		LATITUDE	LONGITUDE
	X	Y		
LT BUOY-43 (06/17)	487.397	2,201.007	30°23'12.56"	81°32'06.92"
LT-45 (06/17)	485.377	2,200.474	30°23'07.20"	81°32'29.96"

GRAPHIC SCALE
100' 0 100' 200'

NOTES:
1. REFER TO SURVEY NO. 17-001.
2. SEE SHEET NO. 1 FOR SURVEY NOTES.




 US Army Corps of Engineers
 Jacksonville District
 SAFETY ON THIS JOB
 DEPENDS ON YOU

<p>DESIGNED BY: WRM</p> <p>CHECKED BY: GHR</p> <p>DATE: JUN 2017</p>	<p>PROJECT: ANNUAL EXAMINATION SURVEY FY17 30, 34, 38, 40 & 42-FOOT PROJECT</p> <p>LOCATION: JACKSONVILLE HARBOR, FLORIDA</p> <p>DATE: JUN 2017</p>
---	--

JACKSONVILLE DISTRICT, CORPS OF ENGINEERS
 JACKSONVILLE, FLORIDA

**ANNUAL EXAMINATION SURVEY FY17
30, 34, 38, 40 & 42-FOOT PROJECT**
 STA. 103+00 THRU STA. 133+00 CUT-42
PLAN

Scale: AS SHOWN

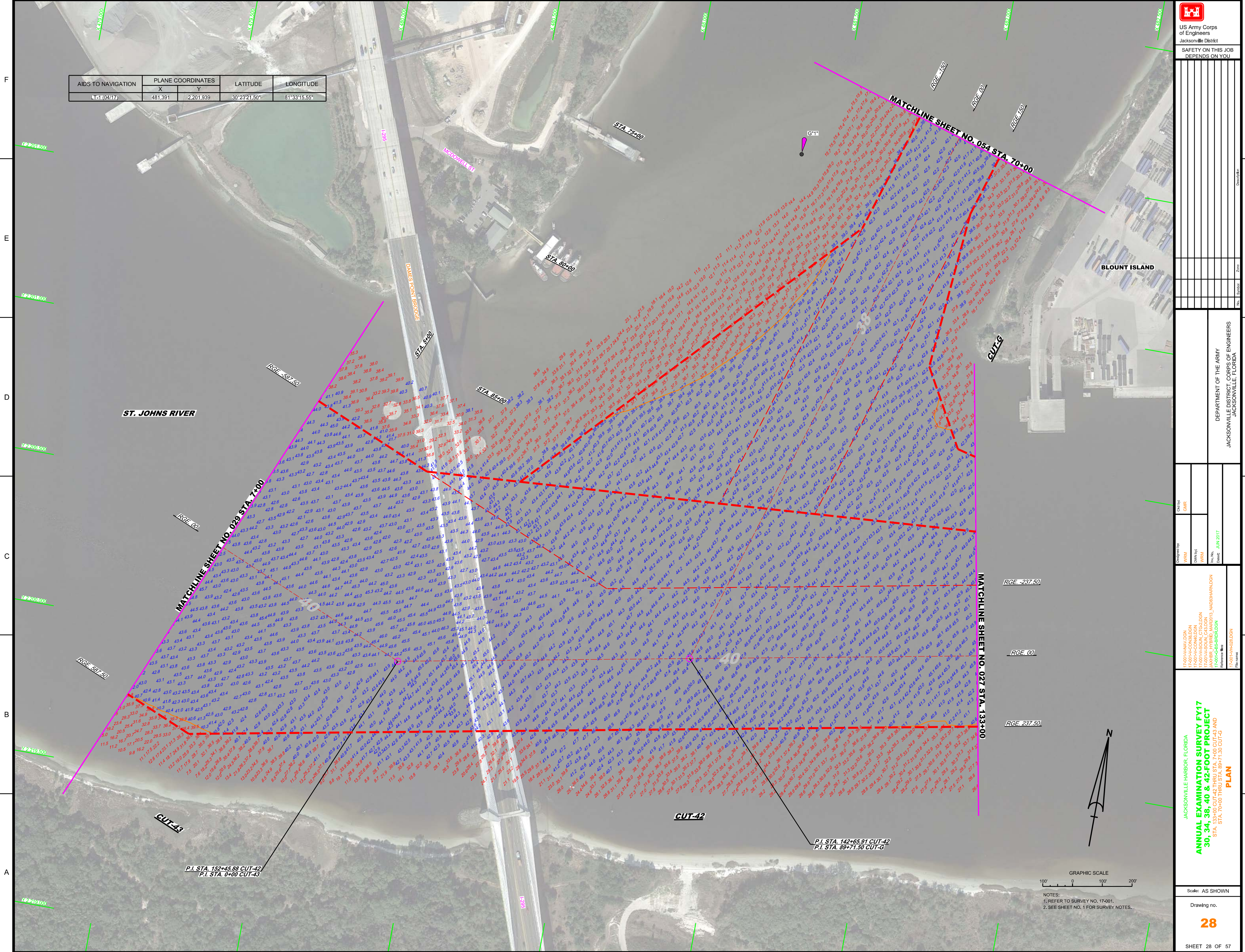
Drawing No. **27**

SHEET 27 OF 57

10 9 8 7 6 5 4 3 2 1

F
E
D
C
B
A

AIDS TO NAVIGATION	PLANE COORDINATES		LATITUDE	LONGITUDE
	X	Y		
LT-1 (04/17)	481.391	2,201.939	30°23'21.50"	81°33'15.55"



US Army Corps of Engineers
Jacksonville District

SAFETY ON THIS JOB
DEPENDS ON YOU

DATE: _____

SCALE: _____

NO. _____

DEPARTMENT OF THE ARMY
JACKSONVILLE DISTRICT, CORPS OF ENGINEERS
JACKSONVILLE, FLORIDA

DATE: _____

SCALE: _____

NO. _____

ANNUAL EXAMINATION SURVEY FY17
30, 34, 38, 40 & 42-FOOT PROJECT
STA. 133+00 CUT-42 THRU STA. 7+00 CUT-43 AND
STA. 70+00 THRU STA. 89+71.50 CUT-G
PLAN

DATE: _____

SCALE: _____

NO. _____

Scale: AS SHOWN

Drawing no.

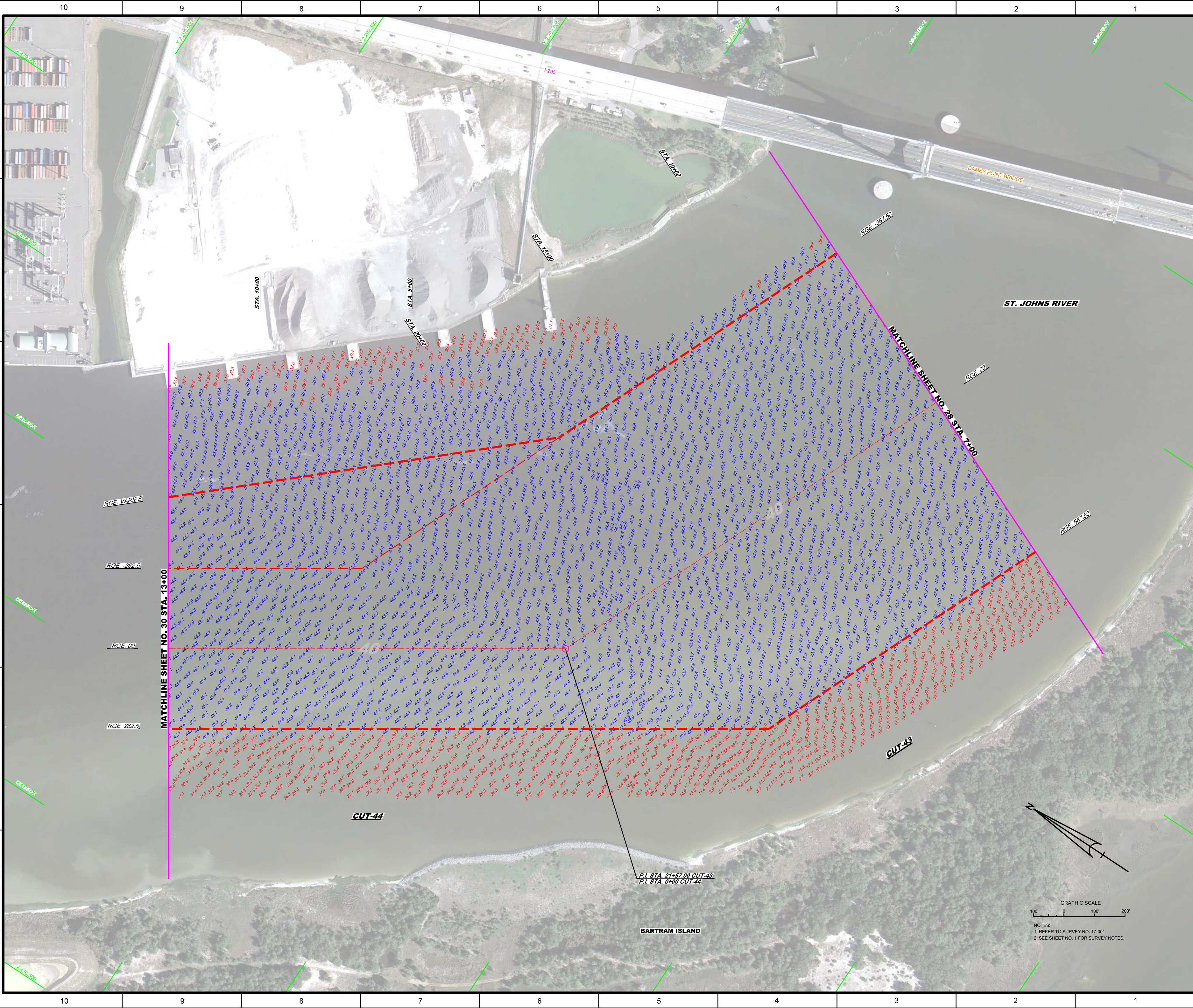
28

SHEET 28 OF 57

DATE: _____

SCALE: _____

NO. _____



US Army Corps of Engineers
Jacksonville District
SAFETY ON THIS JOB
DEPENDS ON YOU

DESIGNED BY: WRM, GHR
DRAWN BY: WRM, GHR
CHECKED BY: WRM, GHR
DATE: JUN 2017

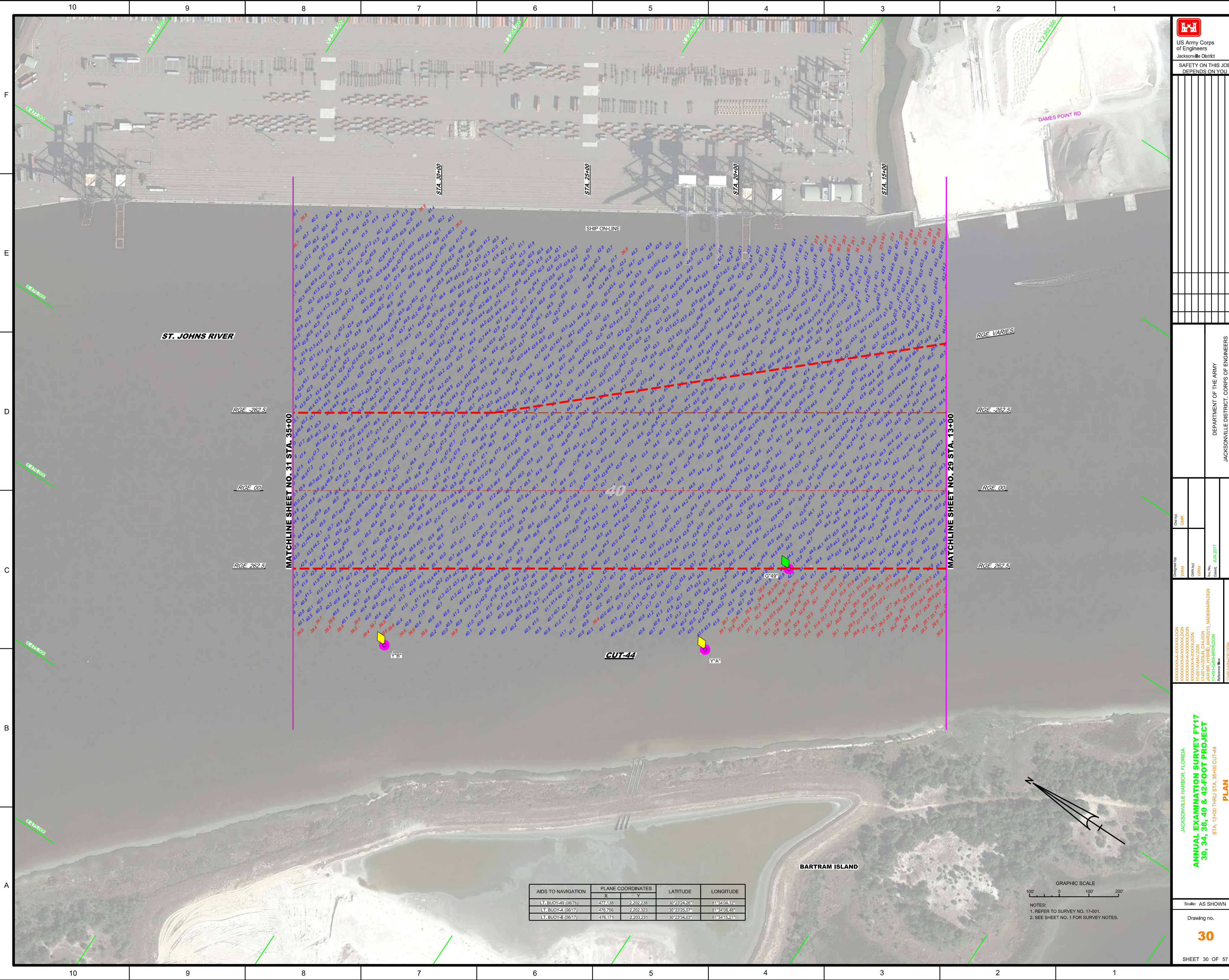
JACKSONVILLE HARBOR, FLORIDA
ANNUAL EXAMINATION SURVEY FY17
30, 34, 38, 40 & 42-FOOT PROJECT
STA. 7+00 CUT-43 THRU STA. 13+00 CUT-44
PLAN

Scale: AS SHOWN
Drawing no. 29
SHEET 29 OF 57

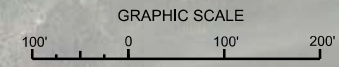
DEPARTMENT OF THE ARMY
JACKSONVILLE DISTRICT, CORPS OF ENGINEERS
JACKSONVILLE, FLORIDA

GRAPHIC SCALE
1" = 100'
0 100' 200'

NOTES:
1. REFER TO SURVEY NO. 17-001.
2. SEE SHEET NO. 1 FOR SURVEY NOTES.



AIDS TO NAVIGATION	PLANE COORDINATES		LATITUDE	LONGITUDE
	X	Y		
LT. BUOY-48 (0876)	477.138	2,202.238	30°23'24.26"	81°34'04.12"
LT. BUOY-A (06417)	476.756	2,202.323	30°23'25.07"	81°34'08.46"
LT. BUOY-B (06417)	476.171	2,203.231	30°23'34.03"	81°34'15.21"



NOTES:
 1. REFER TO SURVEY NO. 17-001.
 2. SEE SHEET NO. 1 FOR SURVEY NOTES.

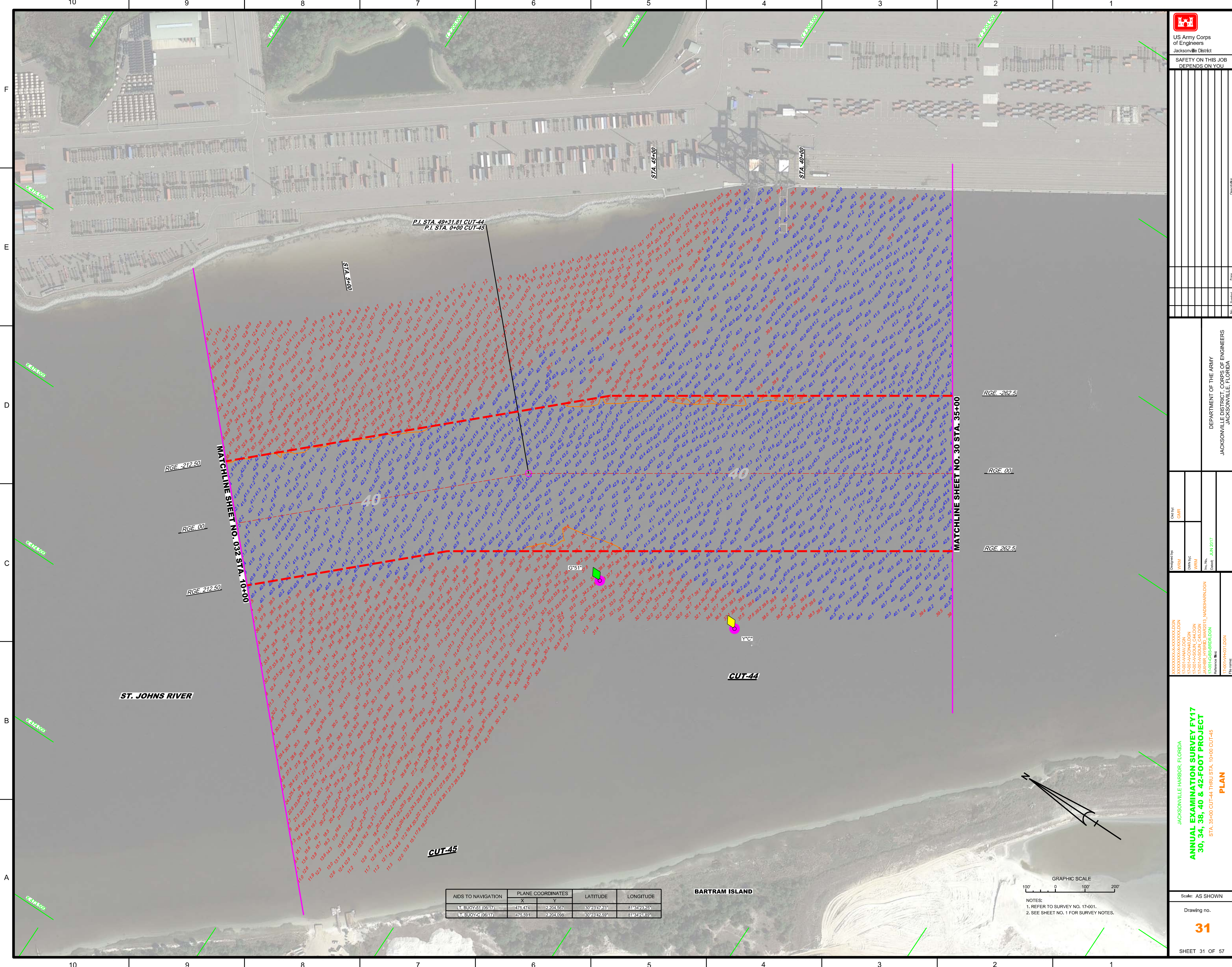
US Army Corps of Engineers
 Jacksonville District
SAFETY ON THIS JOB DEPENDS ON YOU

DESIGNED BY: WRM
 CHECKED BY: GHR
 DATE: JUN 2017

JACKSONVILLE HARBOR, FLORIDA
ANNUAL EXAMINATION SURVEY FY17
30, 34, 38, 40 & 42-FOOT PROJECT
 STA. 13+00 THRU STA. 35+00 CUT-44
PLAN

Scale: AS SHOWN
 Drawing no. **30**
 SHEET 30 OF 57

DEPARTMENT OF THE ARMY
 JACKSONVILLE DISTRICT, CORPS OF ENGINEERS
 JACKSONVILLE, FLORIDA



P.I. STA. 49+31.81 CUT-44
P.I. STA. 0+00 CUT-45

MATCHLINE SHEET NO. 032 STA. 10+00

MATCHLINE SHEET NO. 30 STA. 35+00

AIDS TO NAVIGATION	PLANE COORDINATES		LATITUDE	LONGITUDE
	X	Y		
LT. BUOY-S1 (06/17)	476.474	2,204.567	30°23'47.23"	81°34'23.25"
LT. BUOY-C (06/17)	475.591	2,204.058	30°23'42.59"	81°34'21.89"

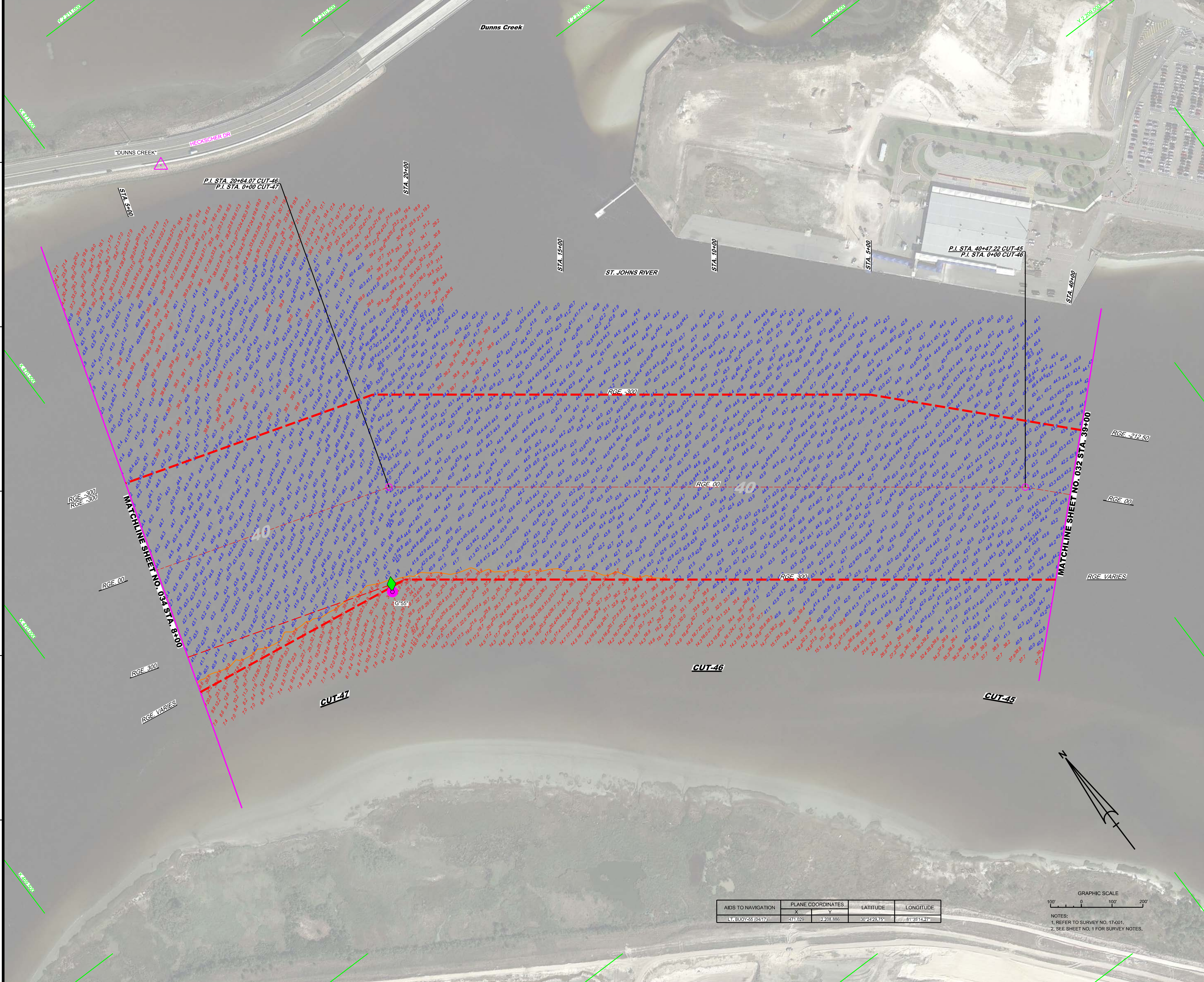


NOTES:
1. REFER TO SURVEY NO. 17-001.
2. SEE SHEET NO. 1 FOR SURVEY NOTES.

Checked By	GHK
Designed By	WRM
Drawn By	WRM
Field Date	JUN 2017
Reference Map	17-001-HR31.DGN
File Name	17-001-HR31.DGN
Scale	AS SHOWN
Drawing No.	31
Sheet	31 OF 57

JACKSONVILLE HARBOR, FLORIDA
ANNUAL EXAMINATION SURVEY FY17
30, 34, 38, 40 & 42-FOOT PROJECT
STA. 35+00 CUT-44 THRU STA. 10+00 CUT-45
PLAN

JACKSONVILLE DISTRICT, CORPS OF ENGINEERS
JACKSONVILLE, FLORIDA



RGE -300

RGE 00

RGE 300

RGE VARIES

RGE 300

RGE 00

RGE -212.50

RGE 00

RGE VARIES

MATCHLINE SHEET NO. 034 STA. 8+00

MATCHLINE SHEET NO. 032 STA. 39+00

P.I. STA. 20+64.07 CUT-46
P.I. STA. 0+00 CUT-47

P.I. STA. 40+47.22 CUT-45
P.I. STA. 0+00 CUT-46

CUT-47

CUT-46

CUT-45

AIDS TO NAVIGATION	PLANE COORDINATES		LATITUDE	LONGITUDE
	X	Y		
LT BUOY 258 (0417)	471.029	2,208.886	30°24'28.75"	81°35'14.27"



NOTES:
1. REFER TO SURVEY NO. 17-001.
2. SEE SHEET NO. 1 FOR SURVEY NOTES.

DATE	DESCRIPTION	BY	CHECKED

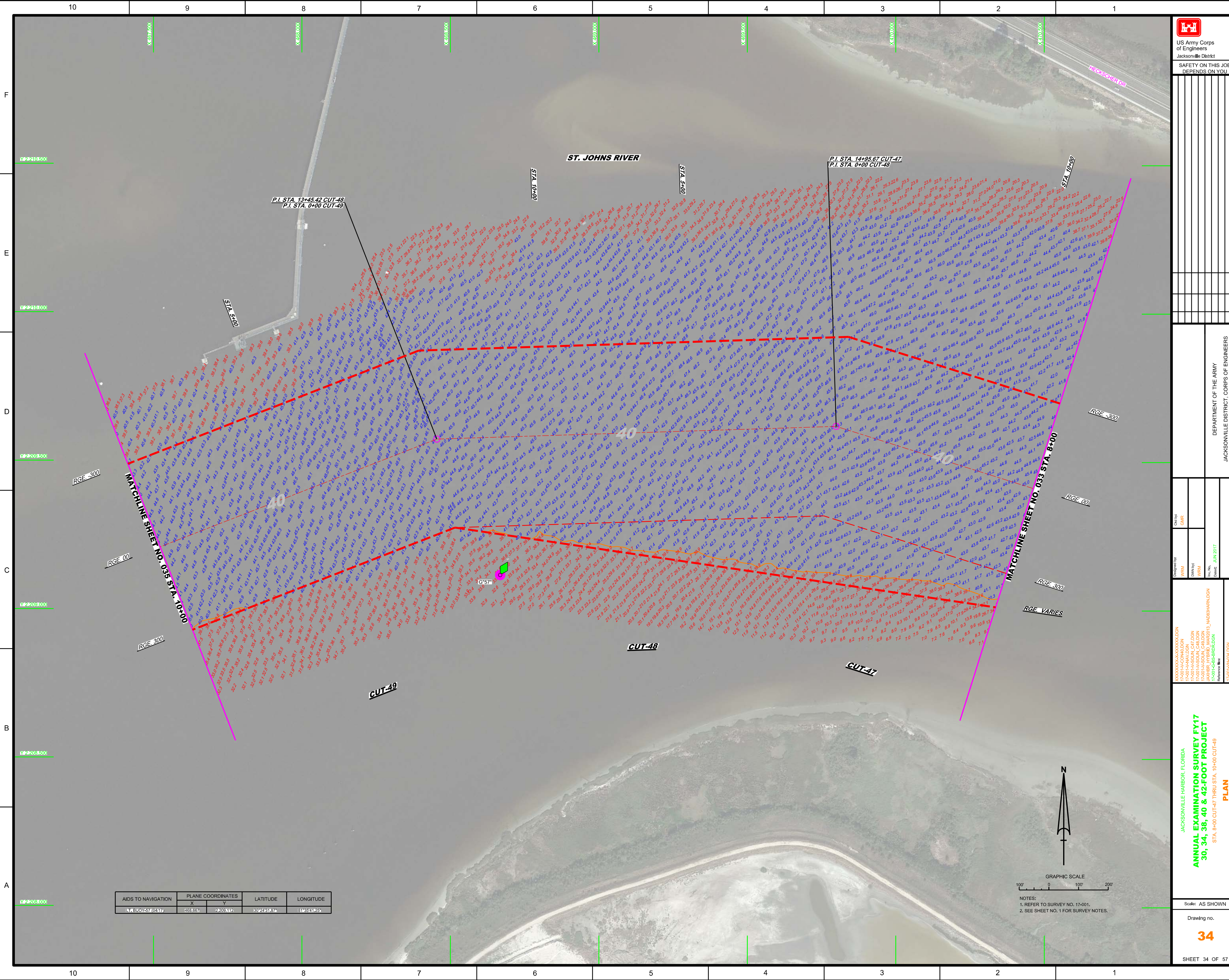
DEPARTMENT OF THE ARMY
JACKSONVILLE DISTRICT, CORPS OF ENGINEERS
JACKSONVILLE, FLORIDA

Drawn By: WRM
Checked: WRM
Date: JUN 2017

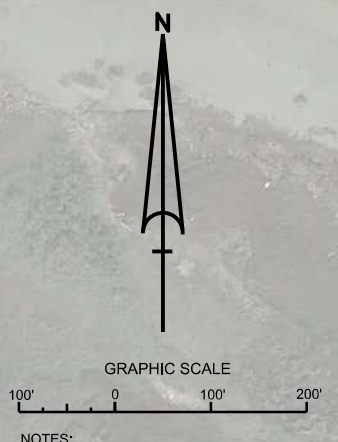
17-001-HARBOR-FLO
17-001-A-SUB-CAC-01
17-001-A-SUB-CAC-02
17-001-A-SUB-CAC-03
17-001-A-SUB-CAC-04
17-001-A-SUB-CAC-05
17-001-A-SUB-CAC-06
17-001-A-SUB-CAC-07
17-001-A-SUB-CAC-08
17-001-A-SUB-CAC-09
17-001-A-SUB-CAC-10
17-001-A-SUB-CAC-11
17-001-A-SUB-CAC-12
17-001-A-SUB-CAC-13
17-001-A-SUB-CAC-14
17-001-A-SUB-CAC-15
17-001-A-SUB-CAC-16
17-001-A-SUB-CAC-17
17-001-A-SUB-CAC-18
17-001-A-SUB-CAC-19
17-001-A-SUB-CAC-20
17-001-A-SUB-CAC-21
17-001-A-SUB-CAC-22
17-001-A-SUB-CAC-23
17-001-A-SUB-CAC-24
17-001-A-SUB-CAC-25
17-001-A-SUB-CAC-26
17-001-A-SUB-CAC-27
17-001-A-SUB-CAC-28
17-001-A-SUB-CAC-29
17-001-A-SUB-CAC-30
17-001-A-SUB-CAC-31
17-001-A-SUB-CAC-32
17-001-A-SUB-CAC-33
17-001-A-SUB-CAC-34
17-001-A-SUB-CAC-35
17-001-A-SUB-CAC-36
17-001-A-SUB-CAC-37
17-001-A-SUB-CAC-38
17-001-A-SUB-CAC-39
17-001-A-SUB-CAC-40
17-001-A-SUB-CAC-41
17-001-A-SUB-CAC-42
17-001-A-SUB-CAC-43
17-001-A-SUB-CAC-44
17-001-A-SUB-CAC-45
17-001-A-SUB-CAC-46
17-001-A-SUB-CAC-47
17-001-A-SUB-CAC-48
17-001-A-SUB-CAC-49
17-001-A-SUB-CAC-50
17-001-A-SUB-CAC-51
17-001-A-SUB-CAC-52
17-001-A-SUB-CAC-53
17-001-A-SUB-CAC-54
17-001-A-SUB-CAC-55
17-001-A-SUB-CAC-56
17-001-A-SUB-CAC-57
17-001-A-SUB-CAC-58
17-001-A-SUB-CAC-59
17-001-A-SUB-CAC-60
17-001-A-SUB-CAC-61
17-001-A-SUB-CAC-62
17-001-A-SUB-CAC-63
17-001-A-SUB-CAC-64
17-001-A-SUB-CAC-65
17-001-A-SUB-CAC-66
17-001-A-SUB-CAC-67
17-001-A-SUB-CAC-68
17-001-A-SUB-CAC-69
17-001-A-SUB-CAC-70
17-001-A-SUB-CAC-71
17-001-A-SUB-CAC-72
17-001-A-SUB-CAC-73
17-001-A-SUB-CAC-74
17-001-A-SUB-CAC-75
17-001-A-SUB-CAC-76
17-001-A-SUB-CAC-77
17-001-A-SUB-CAC-78
17-001-A-SUB-CAC-79
17-001-A-SUB-CAC-80
17-001-A-SUB-CAC-81
17-001-A-SUB-CAC-82
17-001-A-SUB-CAC-83
17-001-A-SUB-CAC-84
17-001-A-SUB-CAC-85
17-001-A-SUB-CAC-86
17-001-A-SUB-CAC-87
17-001-A-SUB-CAC-88
17-001-A-SUB-CAC-89
17-001-A-SUB-CAC-90
17-001-A-SUB-CAC-91
17-001-A-SUB-CAC-92
17-001-A-SUB-CAC-93
17-001-A-SUB-CAC-94
17-001-A-SUB-CAC-95
17-001-A-SUB-CAC-96
17-001-A-SUB-CAC-97
17-001-A-SUB-CAC-98
17-001-A-SUB-CAC-99
17-001-A-SUB-CAC-100

JACKSONVILLE HARBOR, FLORIDA
**ANNUAL EXAMINATION SURVEY FY17
30, 34, 38, 40 & 42-FOOT PROJECT**
STA. 39+00 CUT-45 THRU STA. 8+00 CUT-47
PLAN

Scale: AS SHOWN
Drawing no. **33**
SHEET 33 OF 57



AIDS TO NAVIGATION	PLANE COORDINATES		LATITUDE	LONGITUDE
	X	Y		
LT-800V57 (047)	463.667	2209412	30°24'31.87N	81°39'41.25W



DESIGNER	DRAWN	CHECKED	DATE

DEPARTMENT OF THE ARMY
JACKSONVILLE DISTRICT CORPS OF ENGINEERS
JACKSONVILLE, FLORIDA

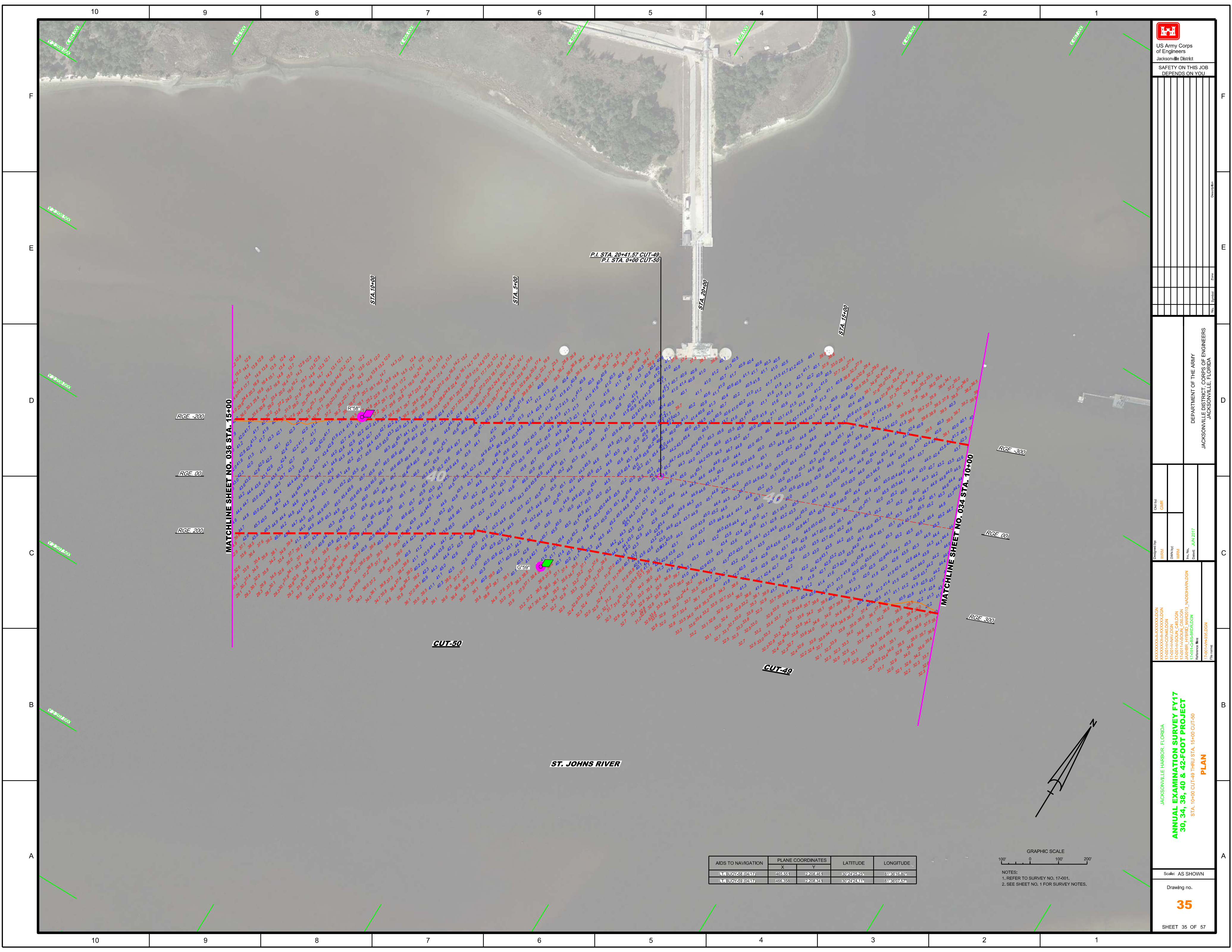
Designed By: VPM
Drawn By: VPM
Checked: JUN 2017

JACKSONVILLE HARBOR, FLORIDA
ANNUAL EXAMINATION SURVEY FY17
30, 34, 38, 40 & 42-FOOT PROJECT
STA. 8+00 CUT-47 THRU STA. 10+00 CUT-49
PLAN

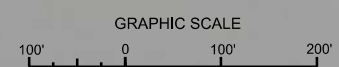
Scale: AS SHOWN

Drawing no.
34

SHEET 34 OF 57



AIDS TO NAVIGATION	PLANE COORDINATES		LATITUDE	LONGITUDE
	X	Y		
NR BUOY 55 (0547)	485.651	2409.451	30°24'25.25"	81°02'18.80"
NR BUOY 50 (0547)	469.855	2408.841	30°24'28.14"	81°02'09.67"



NOTES:
1. REFER TO SURVEY NO. 17-001.
2. SEE SHEET NO. 1 FOR SURVEY NOTES.