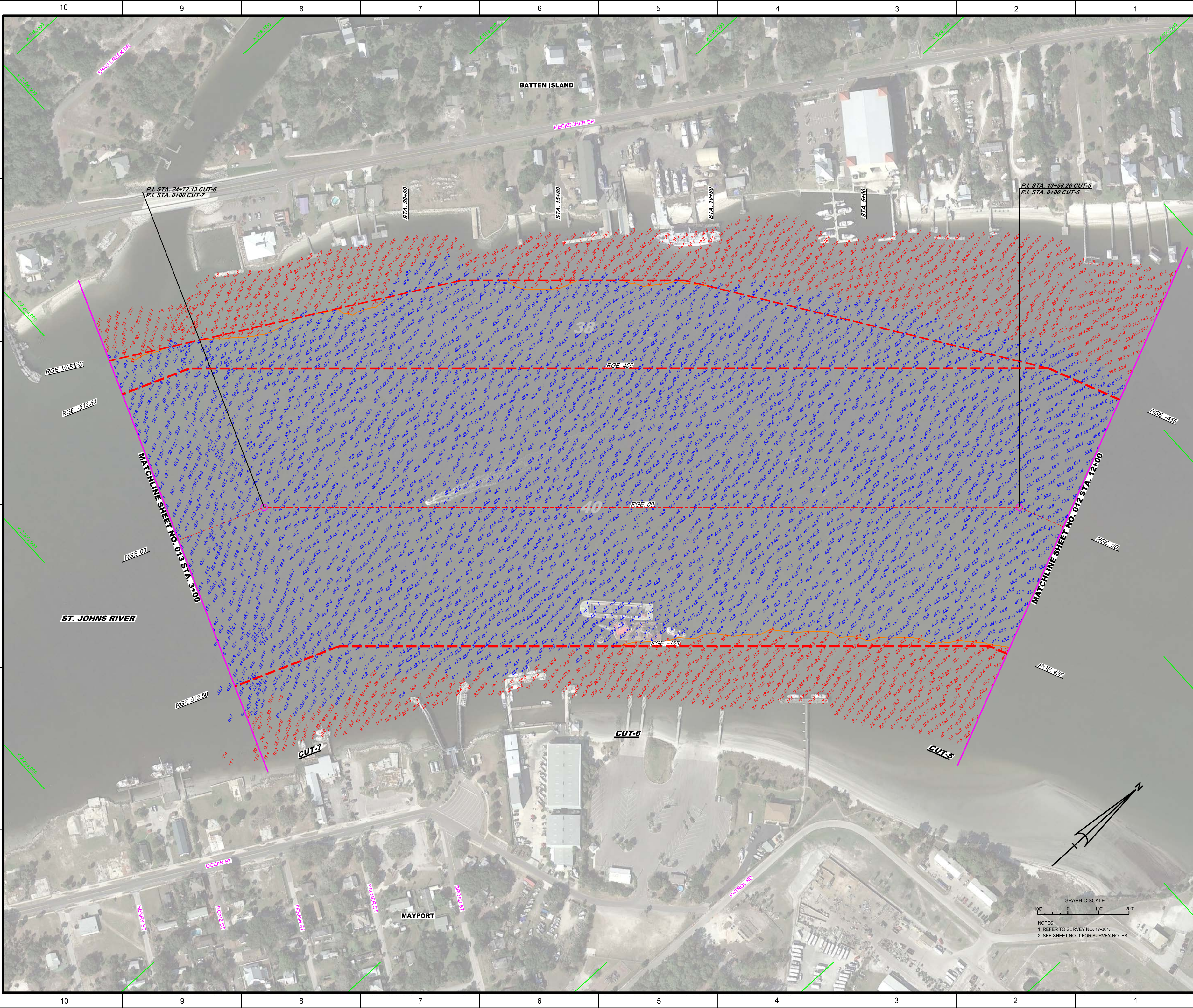


 US Army Corps of Engineers Jacksonville District SAFETY ON THIS JOB DEPENDS ON YOU	
Department of the Army Jacksonville District, Corps of Engineers Jacksonville, Florida	
Designated By: WRM Drawn By: WRM Check: WRM Date: JUN 2017	Checked By: GHR Date:
Project Name: ANNUAL EXAMINATION SURVEY FY17 STA. 288+00 BAR CUT-3 THRU STA. 12+00 CUT-5 Plan Name: PLAN	
Scale: AS SHOWN Drawing No.: 12 SHEET 12 OF 57	

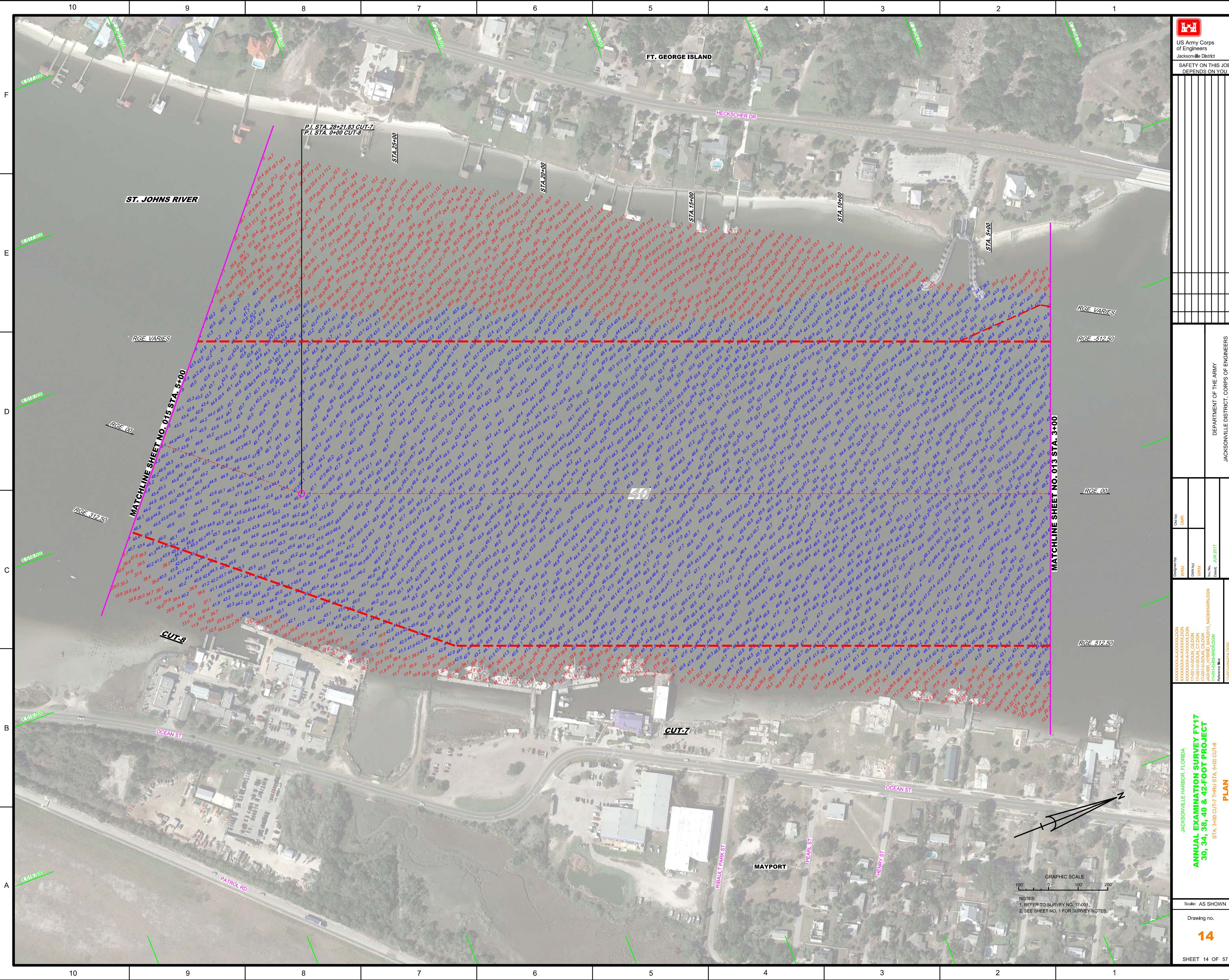



 US Army Corps of Engineers Jacksonville District SAFETY ON THIS JOB DEPENDS ON YOU	
DESIGNED BY: WRM CHECKED BY: GHR DATE: JUN 2017	DRAWN BY: WRM DATE: JUN 2017
PROJECT: ANNUAL EXAMINATION SURVEY FY17 STA. 12+00 CUT-5 THRU STA. 3+00 CUT-7 PLAN	
SHEET 13 OF 57	

GRAPHIC SCALE
 0 100 200
 NOTES:
 1. REFER TO SURVEY NO. 17-001.
 2. SEE SHEET NO. 1 FOR SURVEY NOTES.

DEPARTMENT OF THE ARMY
 JACKSONVILLE DISTRICT, CORPS OF ENGINEERS
 JACKSONVILLE, FLORIDA

JACKSONVILLE HARBOR, FLORIDA
 ANNUAL EXAMINATION SURVEY FY17
 30, 34, 38, 40 & 42-FOOT PROJECT
 STA. 12+00 CUT-5 THRU STA. 3+00 CUT-7
 PLAN
 Scale: AS SHOWN
 Drawing no. 13
 SHEET 13 OF 57



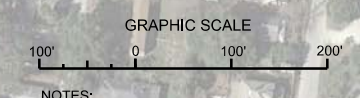


 US Army Corps of Engineers
 Jacksonville District
 SAFETY ON THIS JOB
 DEPENDS ON YOU

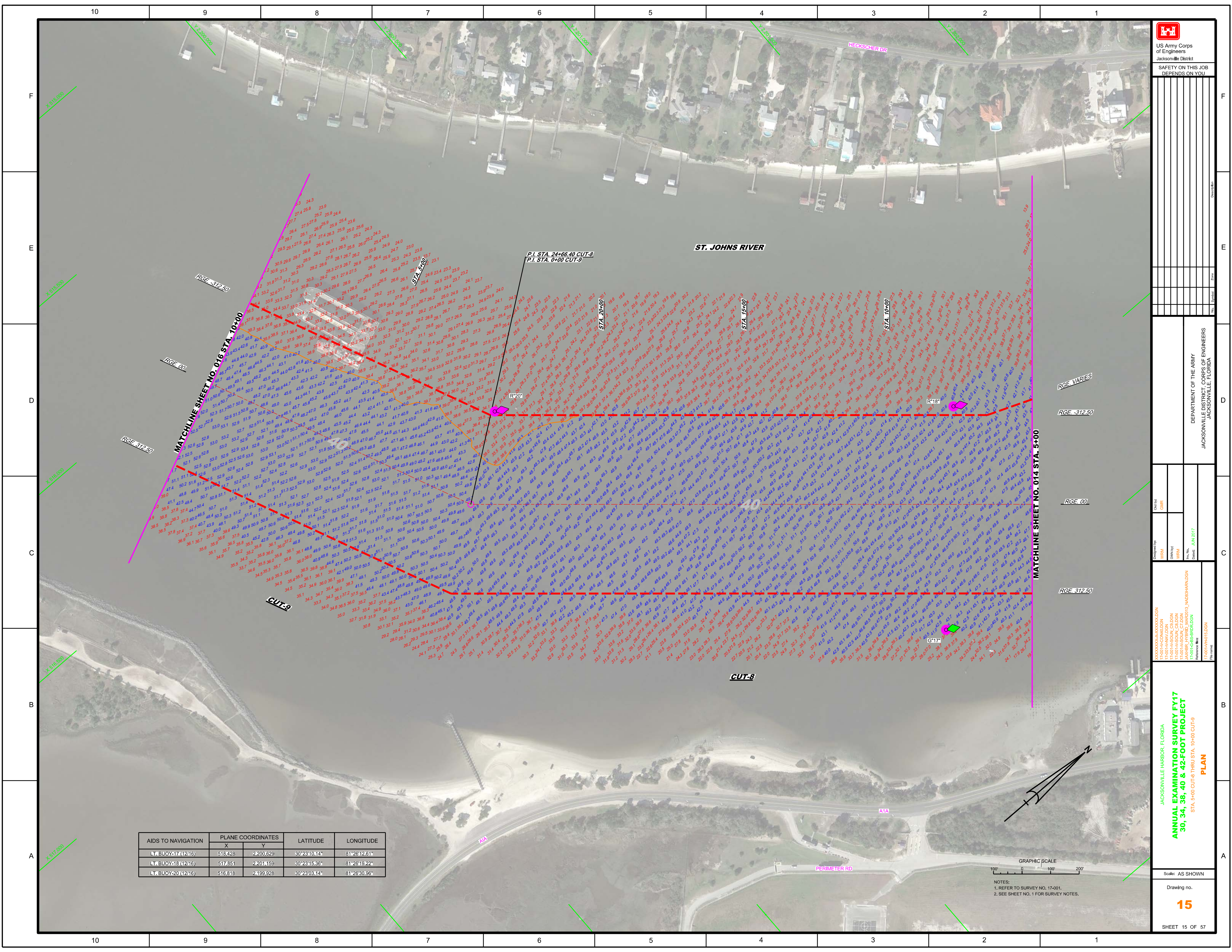
DEPARTMENT OF THE ARMY
 JACKSONVILLE DISTRICT, CORPS OF ENGINEERS
 JACKSONVILLE, FLORIDA

Designated By: **WRM**
 Drawn By: **WRM**
 Checked: **JUN 2017**
 Project No: **17-001-HAR-10DN**
 Job No: **17-001-HAR-10DN**
 Job Name: **ANNUAL EXAMINATION SURVEY FY17**
 Job Description: **30, 34, 38, 40 & 42-FOOT PROJECT**
 Reference Map: **17-001-HAR-10DN**

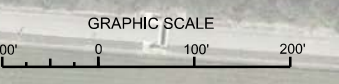
JACKSONVILLE HARBOR, FLORIDA
ANNUAL EXAMINATION SURVEY FY17
30, 34, 38, 40 & 42-FOOT PROJECT
 STA. 3+00 CUT-7 THRU STA. 5+00 CUT-8
PLAN
 Scale: AS SHOWN
 Drawing No. **14**
 SHEET 14 OF 57




NOTES:
 1. REFER TO SURVEY NO. 17-001.
 2. SEE SHEET NO. 1 FOR SURVEY NOTES.



AIDS TO NAVIGATION	PLANE COORDINATES		LATITUDE	LONGITUDE
	X	Y		
LT. BUOY-17(12/16)	518.428	2200.629	30°23'10.14"	81°26'12.61"
LT. BUOY-18(12/16)	517.851	2201.159	30°23'15.36"	81°26'19.22"
LT. BUOY-20(12/16)	516.818	2199.928	30°23'03.14"	81°26'30.56"



NOTES:
 1. REFER TO SURVEY NO. 17-1001.
 2. SEE SHEET NO. 1 FOR SURVEY NOTES.



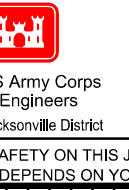
US Army Corps of Engineers
 Jacksonville District
 SAFETY ON THIS JOB
 DEPENDS ON YOU

DESIGNED BY: WRM
 CHECKED BY: GHR
 DATE: JUN 2017

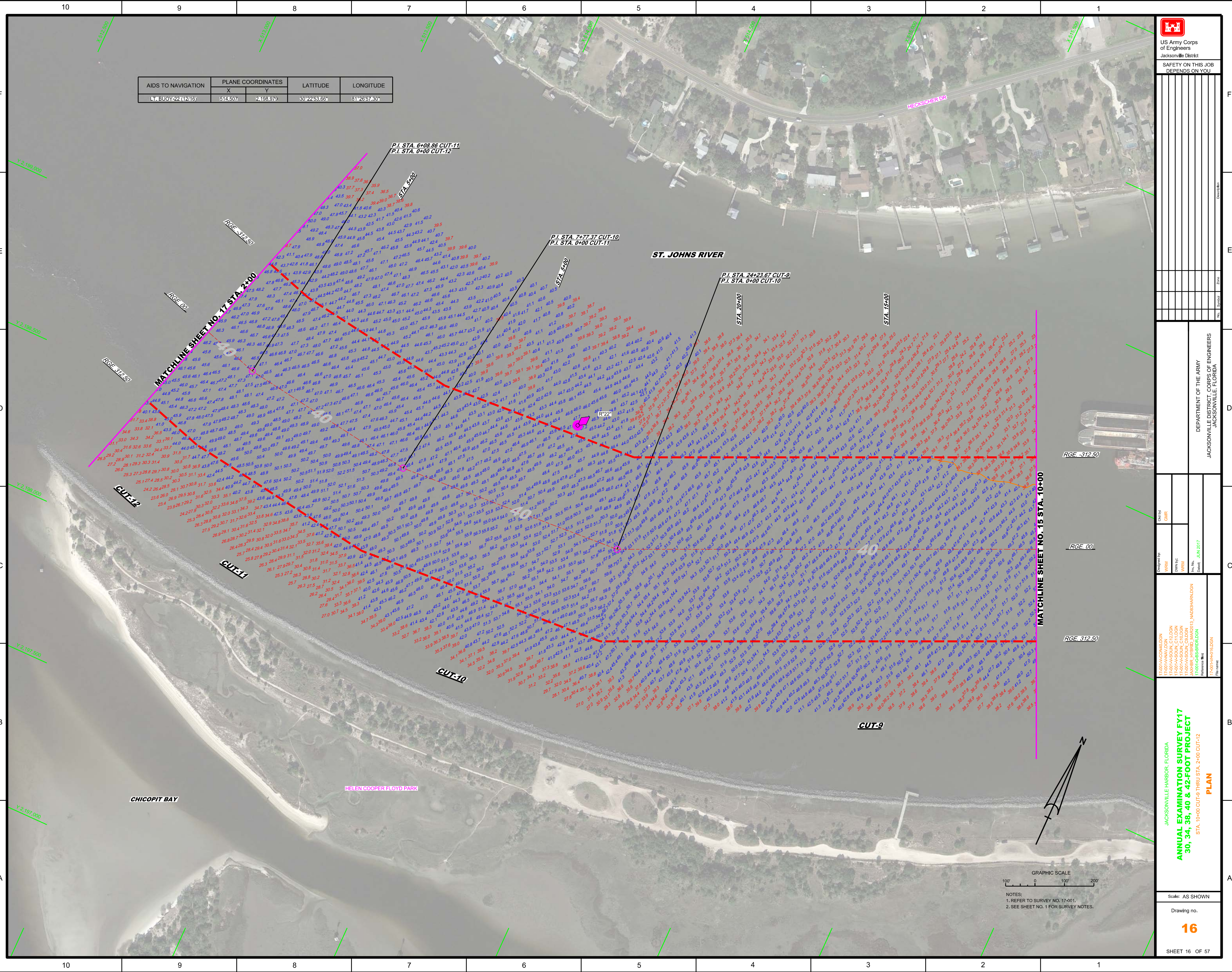
JACKSONVILLE HARBOR, FLORIDA
 ANNUAL EXAMINATION SURVEY FY17
 STA. 5+00 CUT-8 THRU STA. 10+00 CUT-9
PLAN

Scale: AS SHOWN
 Drawing no.
15
 SHEET 15 OF 57

AIDS TO NAVIGATION	PLANE COORDINATES		LATITUDE	LONGITUDE
	X	Y		
LT. BUOY-22(12/16)	514.607	2,198.979	30°22'53.66"	81°26'57.30"



SAFETY ON THIS JOB
DEPENDS ON YOU



CHICOPIT BAY

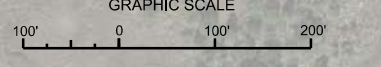
HELEN COOPER FLOYD PARK

ST. JOHNS RIVER

RGE -312.50

RGE 0.0

RGE 312.50



NOTES:
1. REFER TO SURVEY NO. 17-001.
2. SEE SHEET NO. 1 FOR SURVEY NOTES.

DEPARTMENT OF THE ARMY
JACKSONVILLE DISTRICT CORPS OF ENGINEERS
JACKSONVILLE, FLORIDA

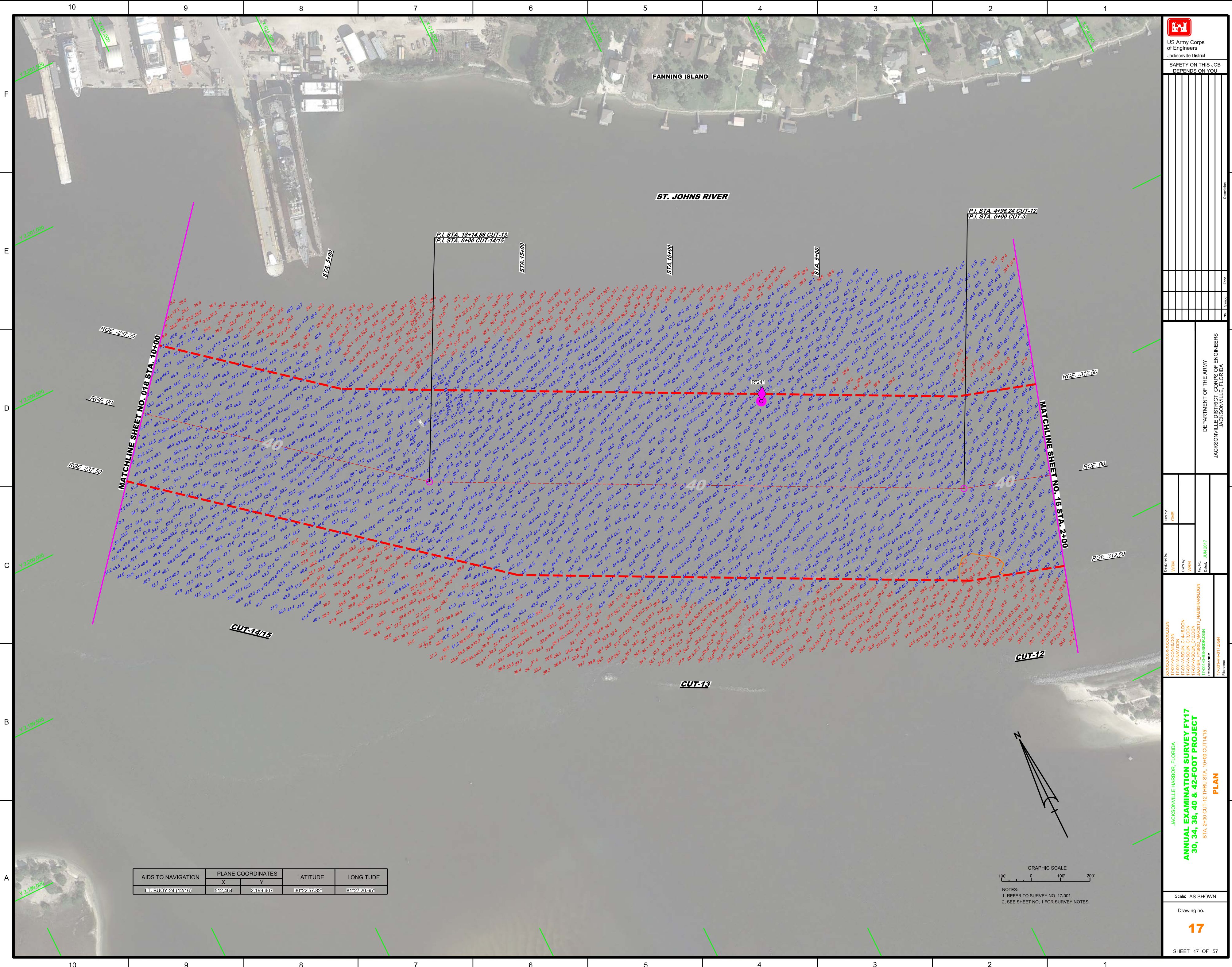
Contract No. W18AW750001
Task Order W18AW750001-001
Project W18AW750001-001-001
Phase 1: SURVEY
Phase 2: DESIGN
Phase 3: CONSTRUCTION
Phase 4: OPERATION
Phase 5: MAINTENANCE
Phase 6: DECOMMISSIONING
Phase 7: REPAIRS
Phase 8: MODIFICATIONS
Phase 9: UPGRADES
Phase 10: DEMOLITION
Date: JUN 2017

JACKSONVILLE HARBOR, FLORIDA
ANNUAL EXAMINATION SURVEY FY17
30, 34, 38, 40 & 42-FOOT PROJECT
STA. 10+00 CUT-9 THRU STA. 2+00 CUT-12

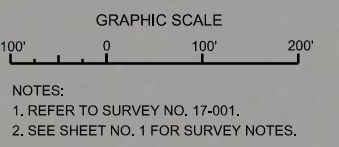
Scale: AS SHOWN

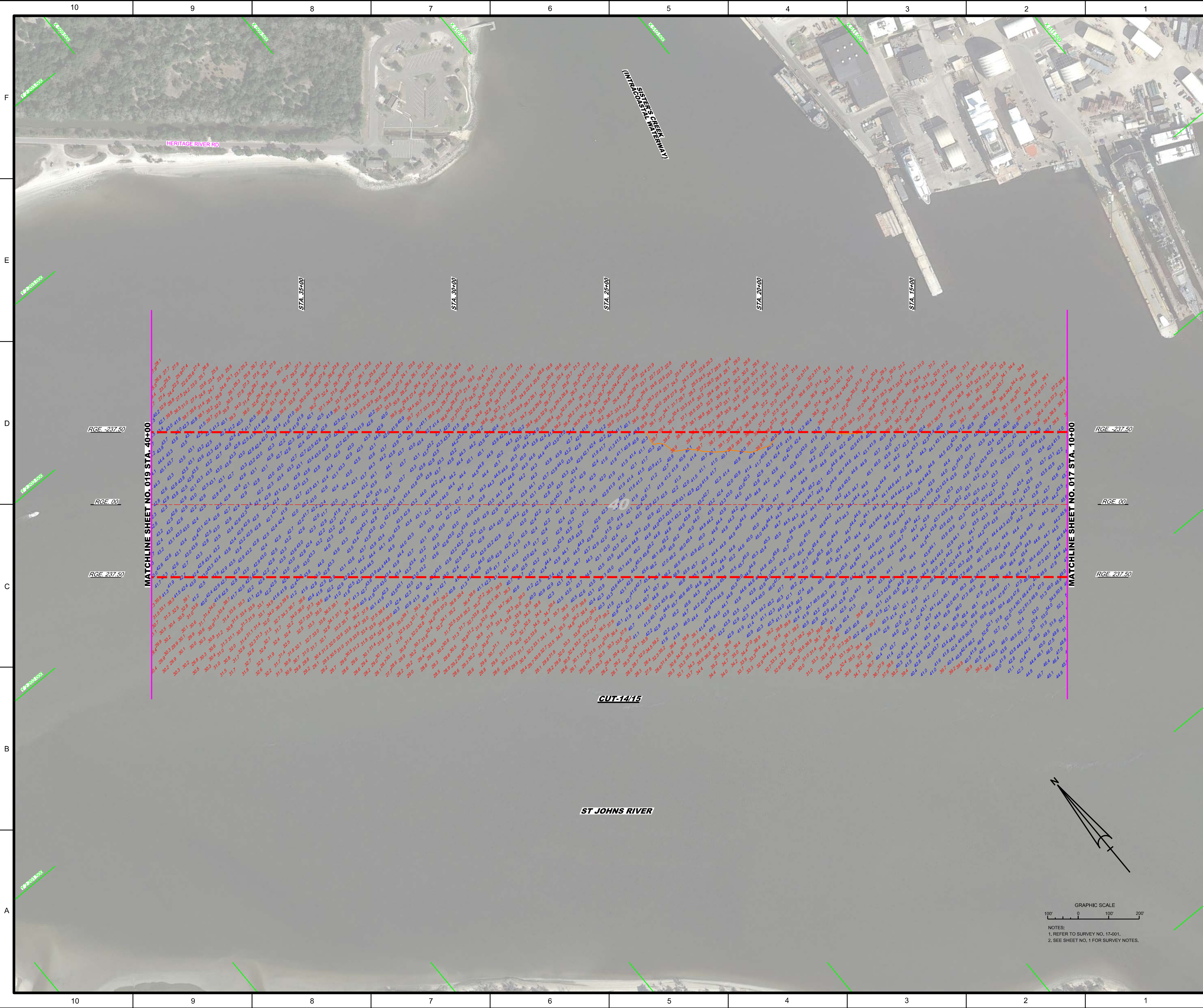
Drawing No. 16

SHEET 16 OF 57



AIDS TO NAVIGATION	PLANE COORDINATES		LATITUDE	LONGITUDE
	X	Y		
LT. BUOY 24 (12/16)	512,464	2,199,407	30°22'57.62"	81°27'20.65"



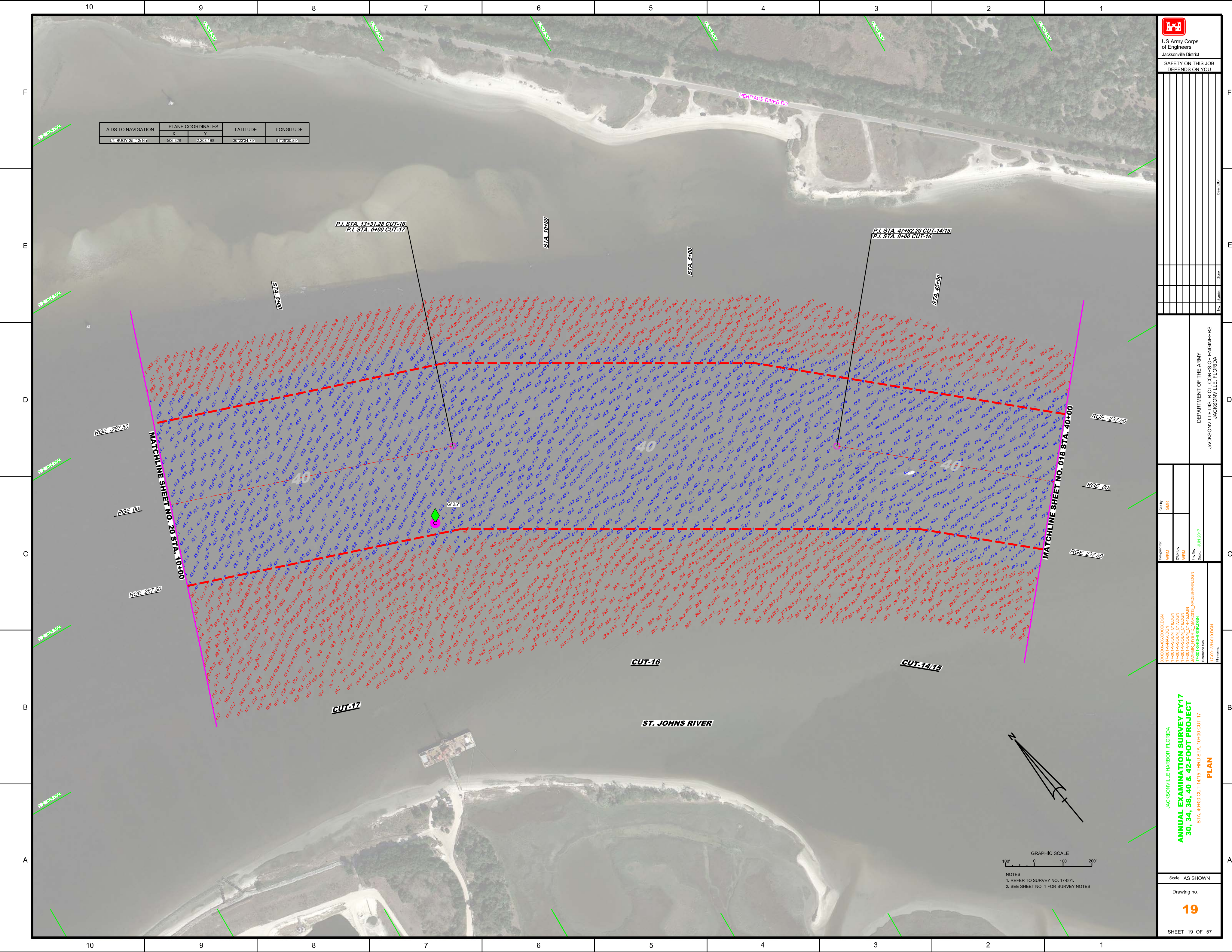


US Army Corps of Engineers Jacksonville District SAFETY ON THIS JOB DEPENDS ON YOU	
DESIGNED BY: WRM CHECKED BY: GHR DATE: JUN 2017	DRAWN BY: WRM DATE: JUN 2017
PROJECT: ANNUAL EXAMINATION SURVEY FY17 STA. 10+00 THRU STA. 40+00 CUT-14/15 PLAN	
DEPARTMENT OF THE ARMY JACKSONVILLE DISTRICT, CORPS OF ENGINEERS JACKSONVILLE, FLORIDA	
SHEET 18 OF 57	

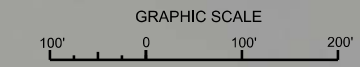
JACKSONVILLE HARBOR, FLORIDA
ANNUAL EXAMINATION SURVEY FY17
30, 34, 38, 40 & 42-FOOT PROJECT
STA. 40+00 CUT-14/15 THRU STA. 10+00 CUT-17
PLAN

Scale: AS SHOWN

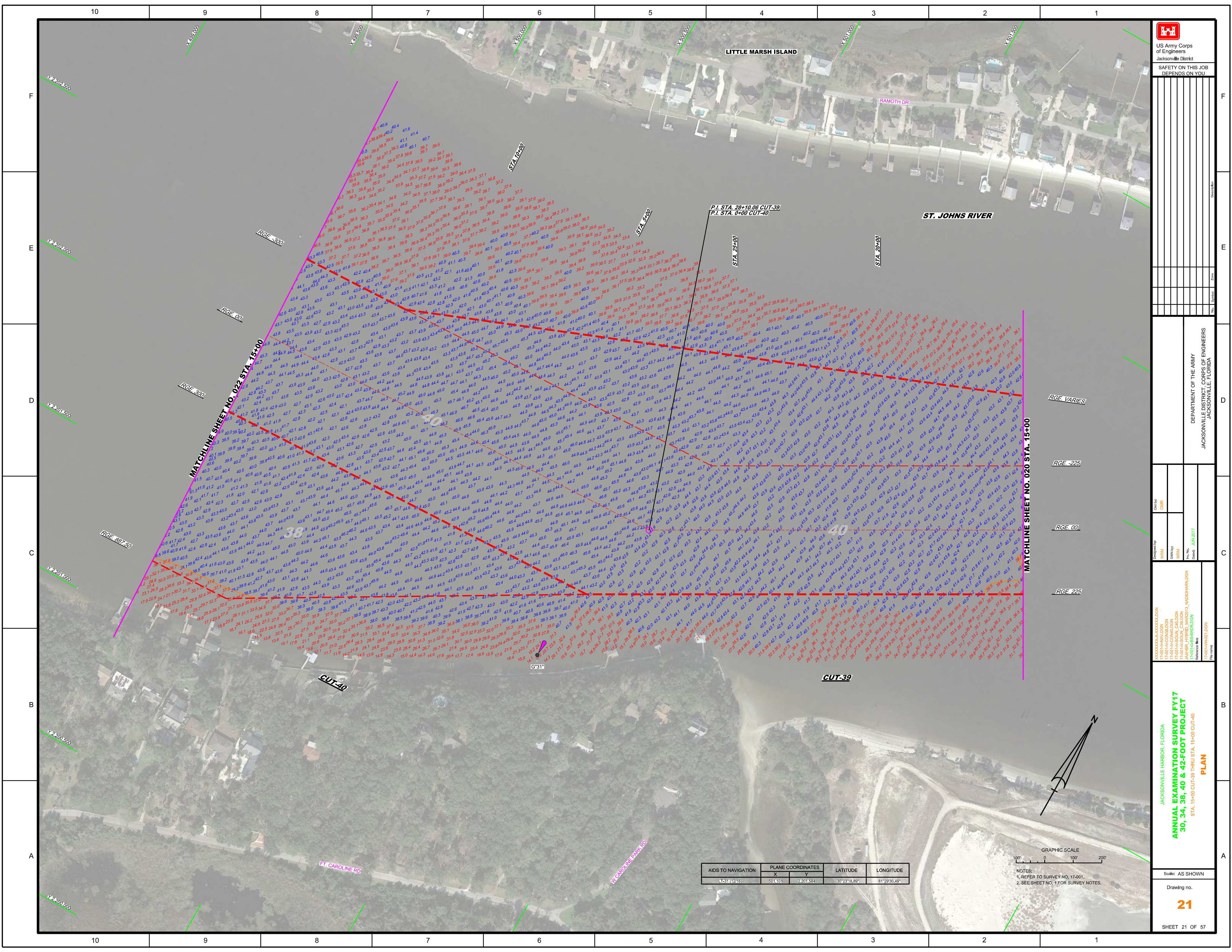
Drawing no.



AIDS TO NAVIGATION	PLANE COORDINATES		LATITUDE	LONGITUDE
	X	Y		
LAF BUOY-26 (12/16)	506328	4203168	30°23'47.9"	81°28'40.69"



NOTES:
1. REFER TO SURVEY NO. 17-401.
2. SEE SHEET NO. 1 FOR SURVEY NOTES.



US Army Corps of Engineers
Jacksonville District
SAFETY ON THIS JOB
DEPENDS ON YOU

DEPARTMENT OF THE ARMY
JACKSONVILLE DISTRICT CORPS OF ENGINEERS
JACKSONVILLE, FLORIDA

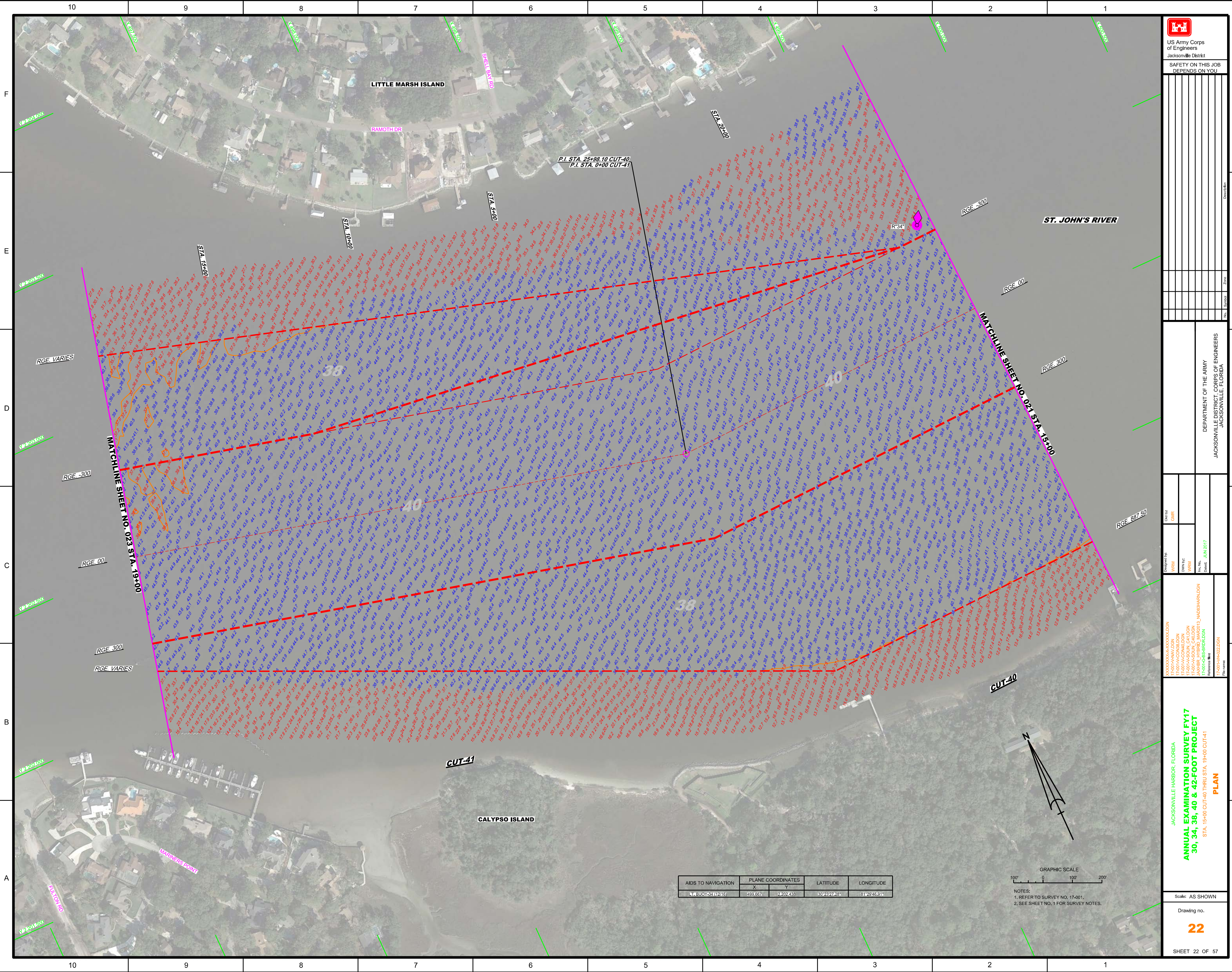
Designed by:	WRM	Checked by:	JUN 2017
Drawn by:	WRM	Reviewed by:	
Scale:	AS SHOWN	Project:	ANNUAL EXAMINATION SURVEY FY17
Sheet:	21 OF 57	Stationing:	STA. 15+00 CUT-39 THRU STA. 15+00 CUT-40

ANNUAL EXAMINATION SURVEY FY17
30, 34, 38, 40 & 42-FOOT PROJECT
PLAN
SHEET 21 OF 57

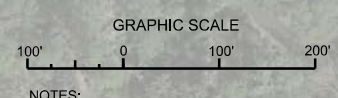
AIDS TO NAVIGATION	PLANE COORDINATES		LATITUDE	LONGITUDE
	X	Y		
LC31 (12/16)	501,101	2,201,554	30°23'18.89"	81°29'30.49"

GRAPHIC SCALE
0 100' 200'

NOTES:
1. REFER TO SURVEY NO. 17-001.
2. SEE SHEET NO. 1 FOR SURVEY NOTES.



AIDS TO NAVIGATION	PLANE COORDINATES		LATITUDE	LONGITUDE
	X	Y		
BUOY 53 (1216)	499.667	2202.433	33°23'26.5"	81°29'45.91"



NOTES:
1. REFER TO SURVEY NO. 17-001.
2. SEE SHEET NO. 1 FOR SURVEY NOTES.