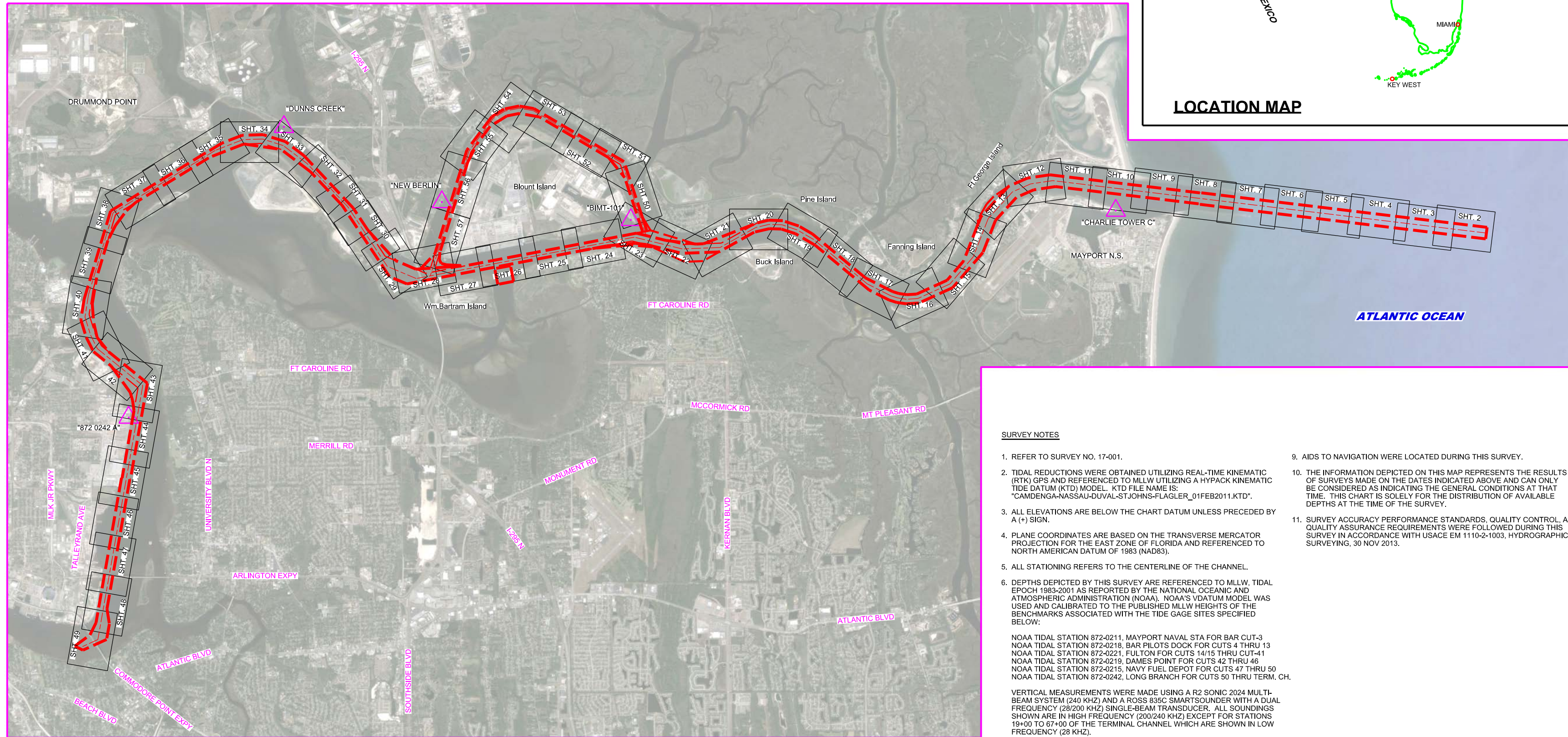


JACKSONVILLE HARBOR, FLORIDA

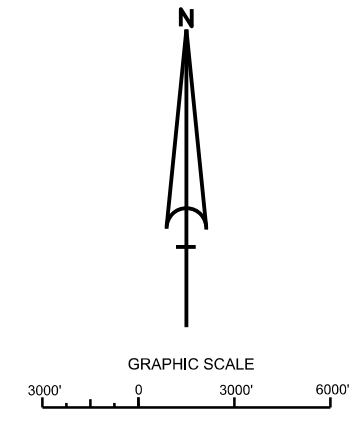
ANNUAL EXAM SURVEY FY17



- SURVEY NOTES**
- REFER TO SURVEY NO. 17-001.
 - TIDAL REDUCTIONS WERE OBTAINED UTILIZING REAL-TIME KINEMATIC (RTK) GPS AND REFERENCED TO MLLW UTILIZING A HYPACK KINEMATIC TIDE DATUM (KT) MODEL. KTD FILE NAME IS: "CAMDENG-NASSAU-DUVAL-STJOHNS-FLAGLER_01FEB2011.KTD".
 - ALL ELEVATIONS ARE BELOW THE CHART DATUM UNLESS PRECEDED BY A (+) SIGN.
 - PLANE COORDINATES ARE BASED ON THE TRANSVERSE MERCATOR PROJECTION FOR THE EAST ZONE OF FLORIDA AND REFERENCED TO NORTH AMERICAN DATUM OF 1983 (NAD83).
 - ALL STATIONING REFERS TO THE CENTERLINE OF THE CHANNEL.
 - DEPTHS DEPICTED BY THIS SURVEY ARE REFERENCED TO MLLW, TIDAL EPOCH 1983-2001 AS REPORTED BY THE NATIONAL OCEANIC AND ATMOSPHERIC ADMINISTRATION (NOAA). NOAA'S DATUM MODEL WAS USED AND CALIBRATED TO THE PUBLISHED MLLW HEIGHTS OF THE BENCHMARKS ASSOCIATED WITH THE TIDE GAGE SITES SPECIFIED BELOW:
 NOAA TIDAL STATION 872-0211, MAYPORT NAVAL STA FOR BAR CUT-3
 NOAA TIDAL STATION 872-0218, BAR PILOTS DOCK FOR CUTS 4 THRU 13
 NOAA TIDAL STATION 872-0221, FULTON FOR CUTS 14/15 THRU CUT-41
 NOAA TIDAL STATION 872-0219, DAMES POINT FOR CUTS 42 THRU 46
 NOAA TIDAL STATION 872-0215, NAVY FUEL DEPOT FOR CUTS 47 THRU 50
 NOAA TIDAL STATION 872-0242, LONG BRANCH FOR CUTS 50 THRU TERM. CH.
 - VERTICAL MEASUREMENTS WERE MADE USING A R2 SONIC 2024 MULTI-BEAM SYSTEM (240 KHZ) AND A ROSS 830C SMARTSOUNDER WITH A DUAL FREQUENCY (28/200 KHZ) SINGLE-BEAM TRANSDUCER. ALL SOUNDINGS SHOWN ARE IN HIGH FREQUENCY (200/240 KHZ) EXCEPT FOR STATIONS 19+00 TO 67+00 OF THE TERMINAL CHANNEL WHICH ARE SHOWN IN LOW FREQUENCY (28 KHZ).
 - THIS SURVEY WAS PERFORMED USING REAL-TIME KINEMATIC (RTK) GPS POSITIONING WITH THE FOLLOWING REFERENCE BASE LOCATIONS:
 REFERENCE BASE LOCATED AT "CHARLIE TOWER ARP" (PID: BBDC09) FOR BAR CUT-3 THRU CUT-6
 REFERENCE BASE LOCATED AT "BIMT-101" (PID: BBBX81) FOR CUT-9 THRU CUT-42, CUT A & B
 REFERENCE BASE LOCATED AT "DUNNS CREEK" (PID: BBCT64) FOR CUT-43 THRU CUT-50
 REFERENCE BASE LOCATED AT "NEW BERLIN" (OPUS PID: BBDH77) FOR CUT-F, CUT-G AND CUT-42
 REFERENCE BASE LOCATED AT "872 0242A" (OPUS PID: BBBZ31) FOR CUT-51 THRU THE TERMINAL CHANNEL
 - AIDS TO NAVIGATION WERE LOCATED DURING THIS SURVEY.
 - THE INFORMATION DEPICTED ON THIS MAP REPRESENTS THE RESULTS OF SURVEYS MADE ON THE DATES INDICATED ABOVE AND CAN ONLY BE CONSIDERED AS INDICATING THE GENERAL CONDITIONS AT THAT TIME. THIS CHART IS SOLELY FOR THE DISTRIBUTION OF AVAILABLE DEPTHS AT THE TIME OF THE SURVEY.
 - SURVEY ACCURACY PERFORMANCE STANDARDS, QUALITY CONTROL, AND QUALITY ASSURANCE REQUIREMENTS WERE FOLLOWED DURING THIS SURVEY IN ACCORDANCE WITH USACE EM 1110-2-1003, HYDROGRAPHIC SURVEYING, 30 NOV 2013.

LEGEND	
	MONUMENT
	LIGHTED BUOY
	GREEN DAYBEACON
	RED DAYBEACON
	RED LIGHTED BUOY
	GREEN LIGHTED BUOY
	CAN BUOY
	NUN BUOY
	TIDE STAFF
	PROJECT DEPTH

AUTHORIZED PROJECT DEPTH	
42 FT	CUT - 3 (BAR CUT), STA. 0+00 THRU STA. 210+00
40 FT	CUT - 3 (BAR CUT) STA. 210+00 THRU TERMINAL CHANNEL STA. 65+00.
34 FT	TERMINAL CHANNEL, STA. 65+00 THRU STA. 186+21 (APPROX. 1200 FEET UPSTREAM FROM THE HART BRIDGE NEAR COMMODORE POINT).
30 FT	CUT-A, STA. 0+00 THRU 53+10.21
38 FT	OLD RIVER BLOUNT ISLAND (WESTSIDE) CHANNEL CUT-F, STA. 10+00 - NEAR WOODEN FISHING BRIDGE PIER THRU INTERSECTION OF CUT - 42 (DAMES PT. - FULTON CUT - OFF



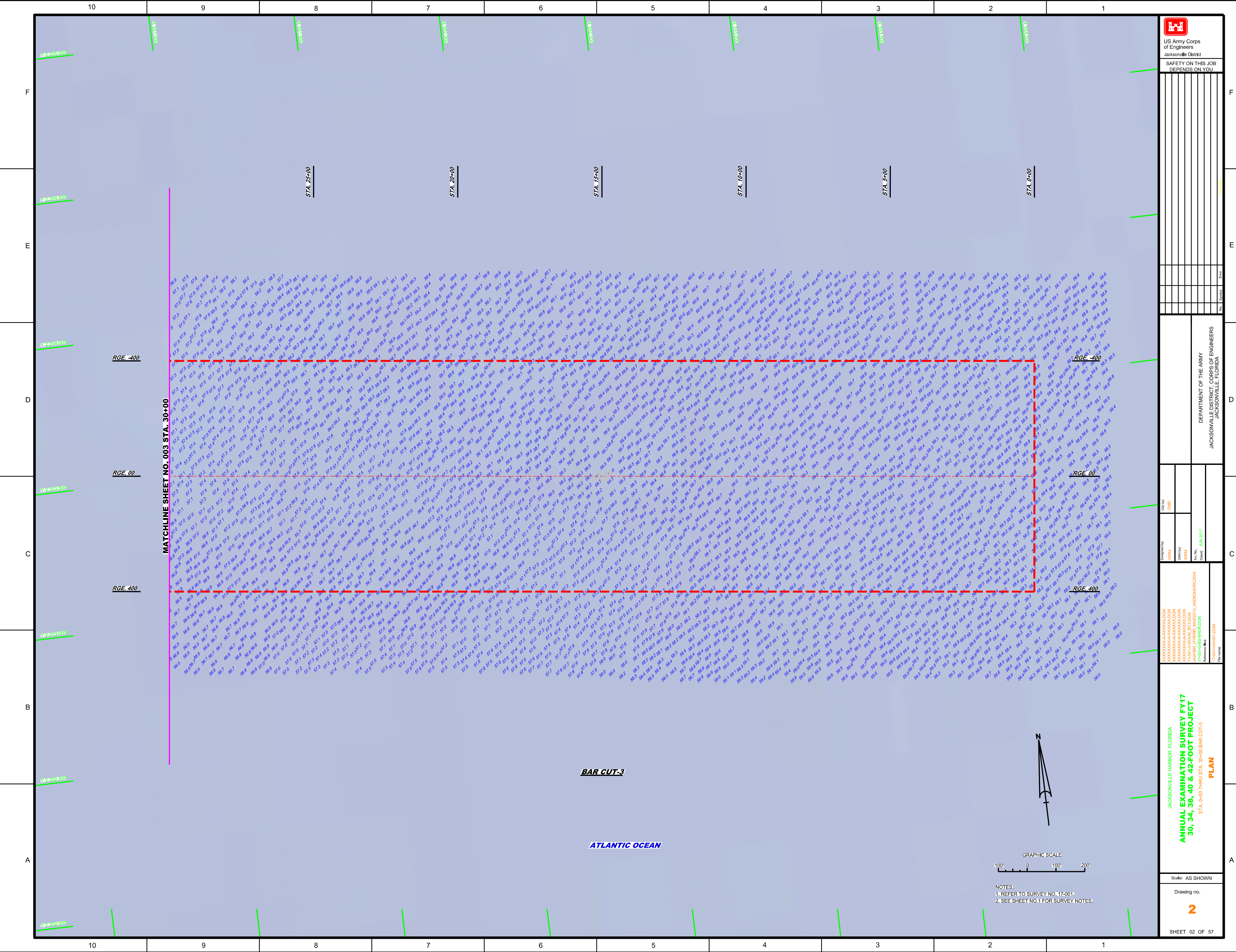
US Army Corps of Engineers
Jacksonville District
SAFETY ON THIS JOB DEPENDS ON YOU

DEPARTMENT OF THE ARMY
JACKSONVILLE DISTRICT, CORPS OF ENGINEERS
JACKSONVILLE, FLORIDA

Checked by: GHR
Designed by: WRM
Drawn by: WRM
Reviewed by: WRM
Date: JUN 2017

JACKSONVILLE HARBOR, FLORIDA
ANNUAL EXAMINATION SURVEY FY17
30, 34, 38, 40 & 42-FOOT PROJECT
INDEX, LOCATION AND VICINITY MAP

Scale: AS SHOWN
Drawing no. 1
SHEET 01 OF 57



US Army Corps of Engineers
Jacksonville District

SAFETY ON THIS JOB
DEPENDS ON YOU

No.	Symbol

DEPARTMENT OF THE ARMY
JACKSONVILLE DISTRICT, CORPS OF ENGINEERS
JACKSONVILLE, FLORIDA

Created By:	Checked By:
VRM	GHR
VRM	VRM
VRM	VRM

Project No.: 17-001-GS-BR1003 (AO03)HARDEN
Date: JUN 2017
Reference: 17-001-GS-BR1003 (AO03)HARDEN
File Name:

JACKSONVILLE HARBOR, FLORIDA
ANNUAL EXAMINATION SURVEY FY17
30, 34, 38, 40 & 42-FOOT PROJECT
STA. 0+00 THRU STA. 30+00 BAR CUT/3
PLAN

NOTES:
1. REFER TO SURVEY NO. 17-001.
2. SEE SHEET NO.1 FOR SURVEY NOTES.



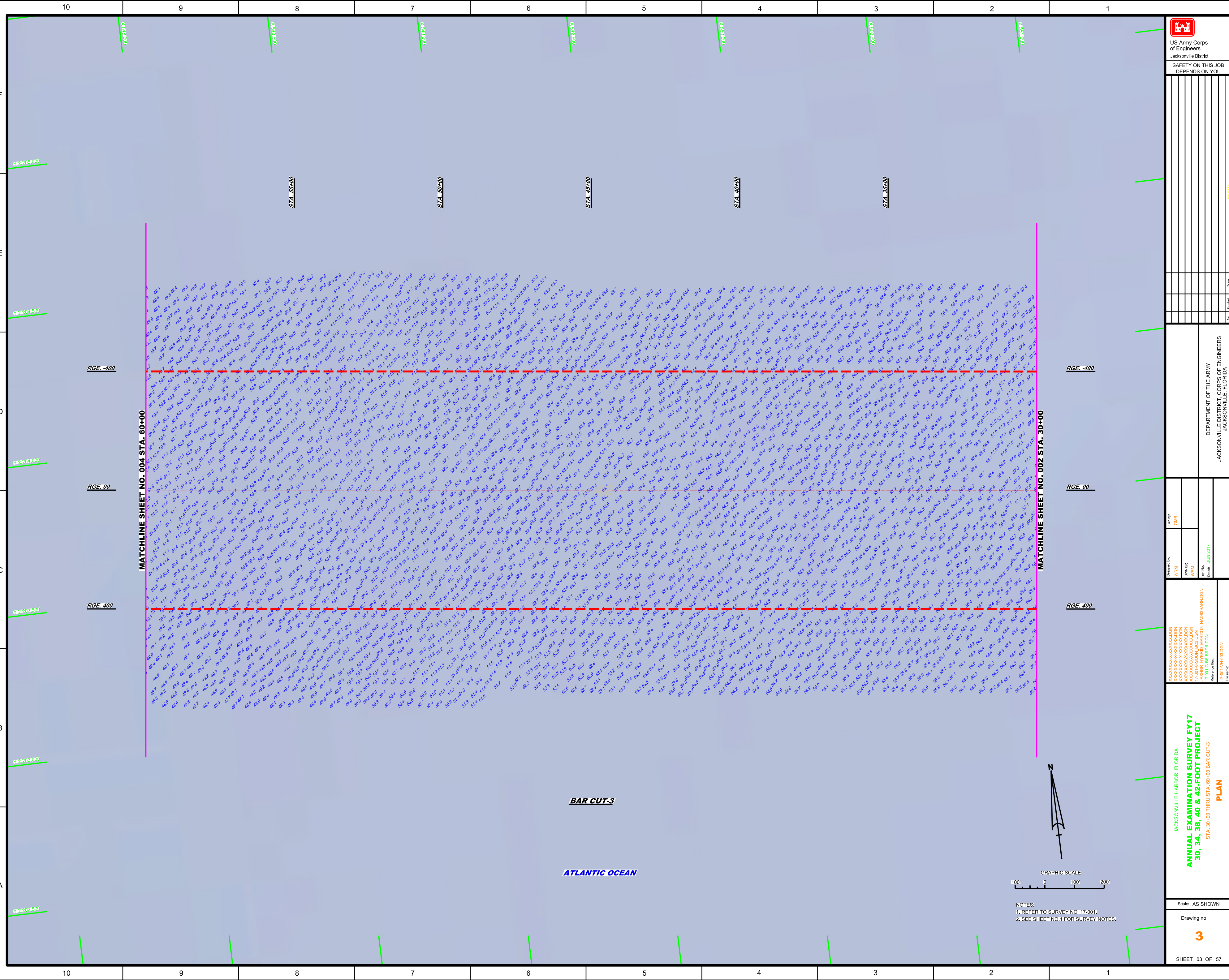
US Army Corps of Engineers
Jacksonville District
SAFETY ON THIS JOB
DEPENDS ON YOU

DEPARTMENT OF THE ARMY
JACKSONVILLE DISTRICT, CORPS OF ENGINEERS
JACKSONVILLE, FLORIDA

Designed by: WRM
Checked by: GHR
Drawn by: WRM
Reviewed by: JAKHRE (PRBD MAR2013), NA008HARDGN
Date: JUN 2017

JACKSONVILLE HARBOR, FLORIDA
**ANNUAL EXAMINATION SURVEY FY17
30, 34, 38, 40 & 42-FOOT PROJECT**
STA. 30+00 THRU STA. 60+00 BAR CUT-3
PLAN

Scale: AS SHOWN
Drawing No. **3**
SHEET 03 OF 57



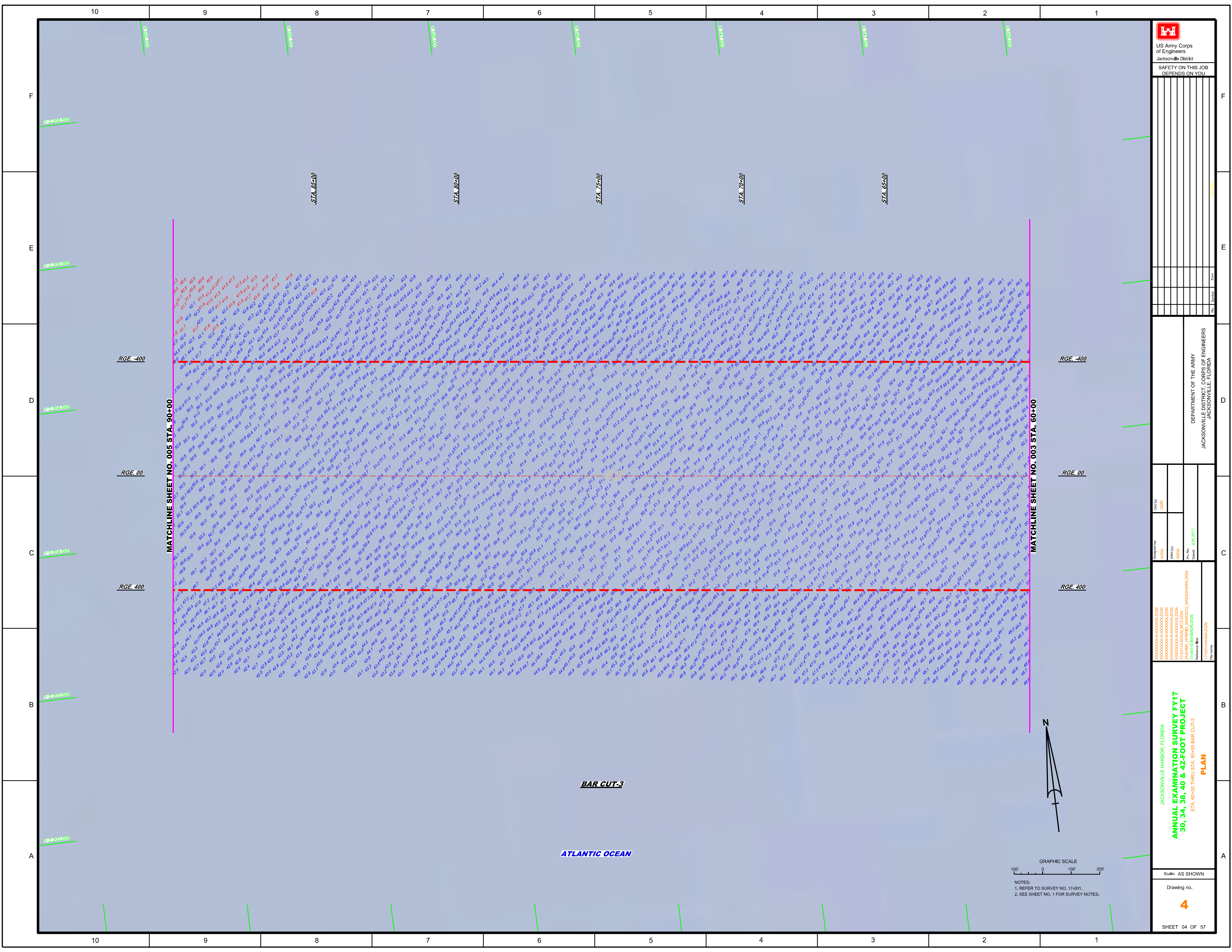
BAR CUT-3

ATLANTIC OCEAN



GRAPHIC SCALE
100' 0 100' 200'

NOTES:
1. REFER TO SURVEY NO. 17-001.
2. SEE SHEET NO.1 FOR SURVEY NOTES.



US Army Corps of Engineers
Jacksonville District

SAFETY ON THIS JOB
DEPENDS ON YOU

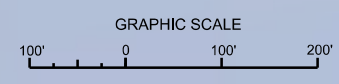
DEPARTMENT OF THE ARMY
JACKSONVILLE DISTRICT, CORPS OF ENGINEERS
JACKSONVILLE, FLORIDA

Designed by: **WRM**
Checked by: **GHR**
Drawn by: **WRM**
Reviewed by: **WRM**
Date: **JUN 2017**

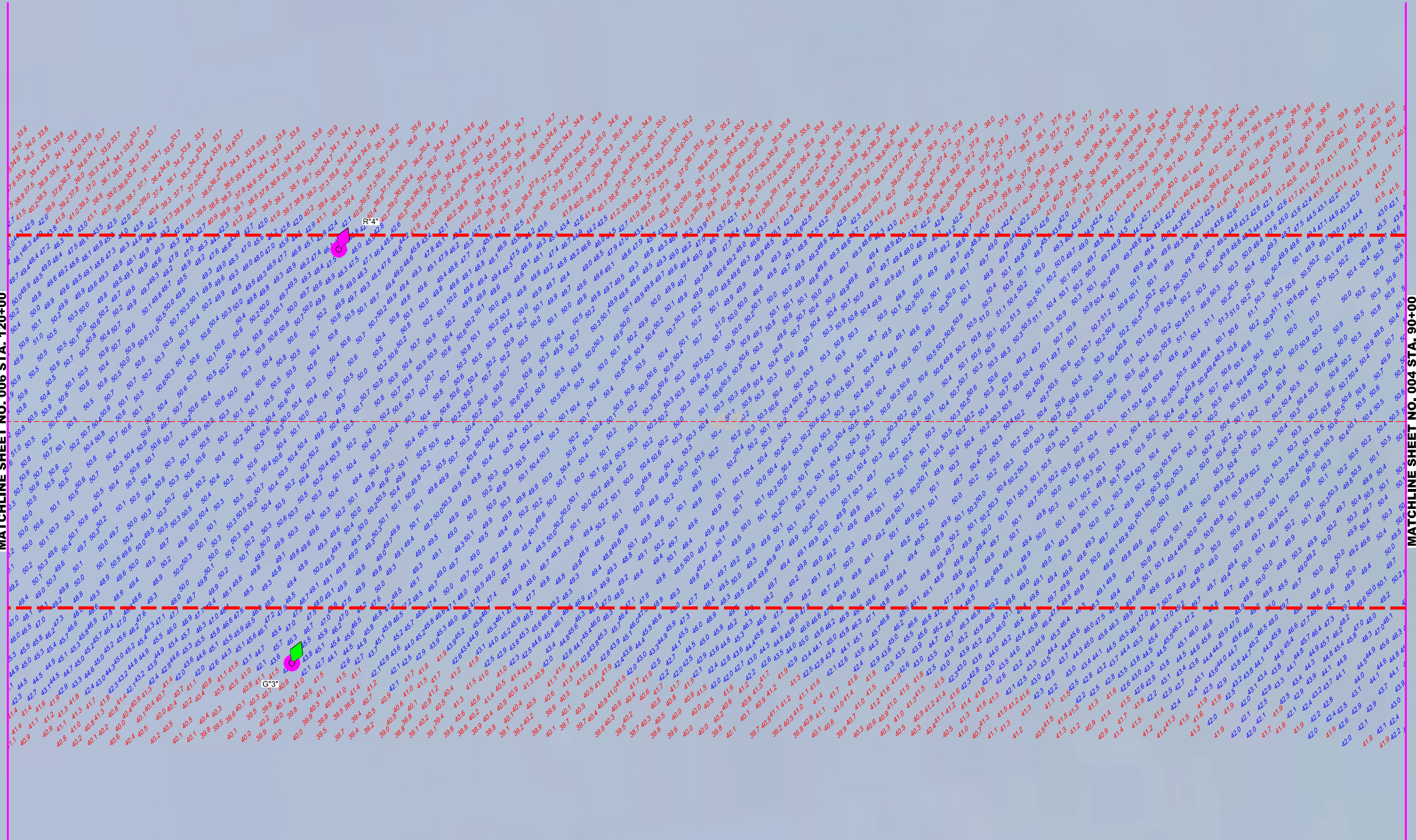
JACKSONVILLE HARBOR, FLORIDA
**ANNUAL EXAMINATION SURVEY FY17
30, 34, 38, 40 & 42-FOOT PROJECT**
STA. 60+00 THRU STA. 99+00 BAR CUT-3
PLAN

Scale: AS SHOWN
Drawing no. **4**
SHEET 04 OF 57

BAR CUT-3
ATLANTIC OCEAN

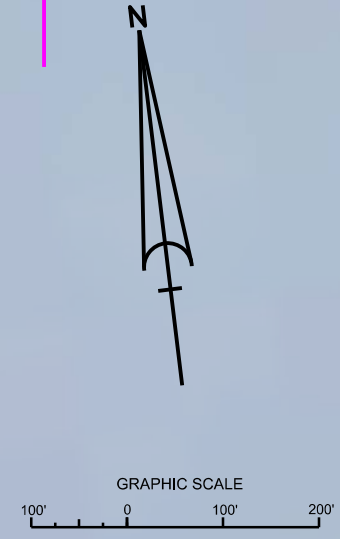


NOTES:
1. REFER TO SURVEY NO. 17-001.
2. SEE SHEET NO. 1 FOR SURVEY NOTES.

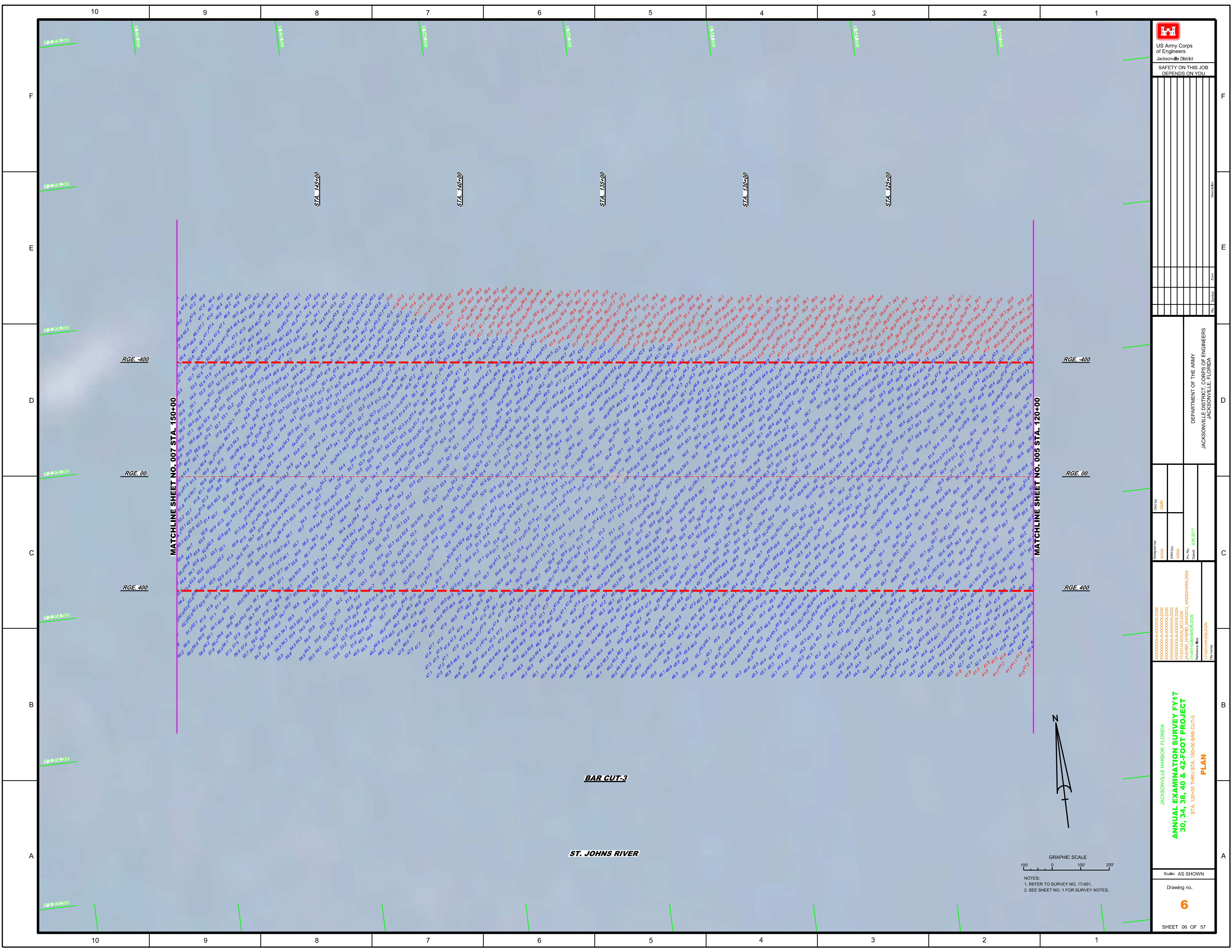



AIDS TO NAVIGATION	PLANE COORDINATES		LATITUDE	LONGITUDE
	X	Y		
LT BUOY-3 (11116)	542,487	2,204,002	30°23'44.36"	81°21'38.06"
LT BUOY-4 (11116)	542,694	2,204,871	30°23'52.96"	81°21'35.72"

ST. JOHNS RIVER



NOTES:
1. REFER TO SURVEY NO. 17-001
2. SEE SHEET NO. 1 FOR SURVEY NOTES.





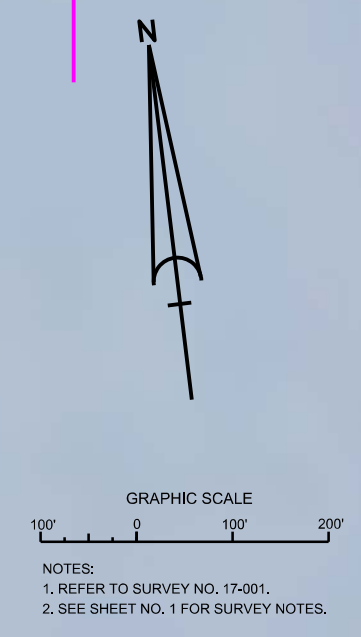
 US Army Corps of Engineers
 Jacksonville District
 SAFETY ON THIS JOB
 DEPENDS ON YOU

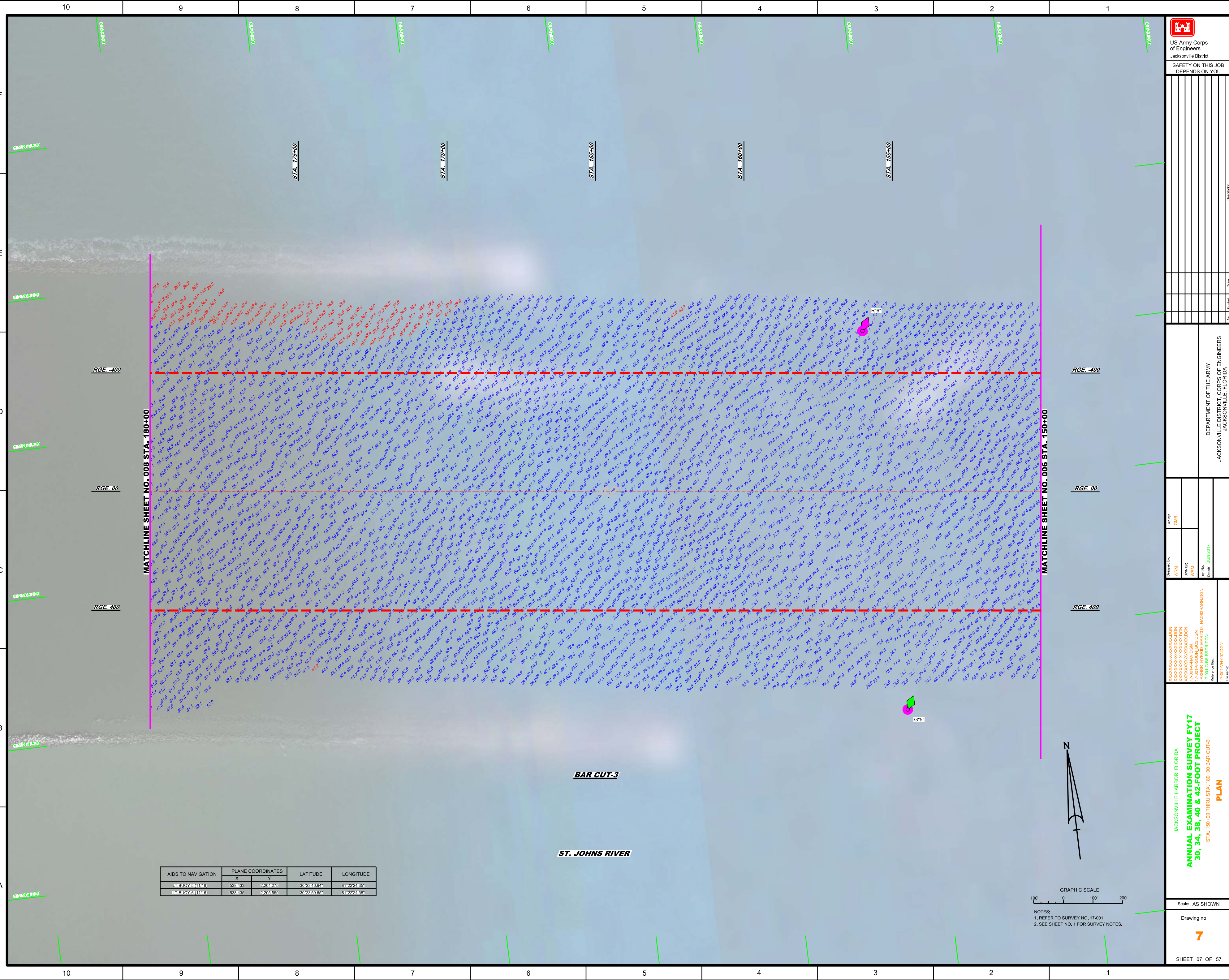
DEPARTMENT OF THE ARMY
 JACKSONVILLE DISTRICT, CORPS OF ENGINEERS
 JACKSONVILLE, FLORIDA

Designed by: **WRM**
 Checked by: **GHR**
 Drawn by: **WRM**
 Date: **JUN 2017**

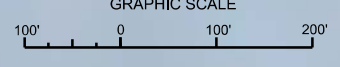
JACKSONVILLE HARBOR, FLORIDA
ANNUAL EXAMINATION SURVEY FY17
30, 34, 38, 40 & 42-FOOT PROJECT
 STA. 120+00 THRU STA. 130+00 BAR CUT-3
PLAN

Scale: AS SHOWN
 Drawing no. **6**
 SHEET 06 OF 57



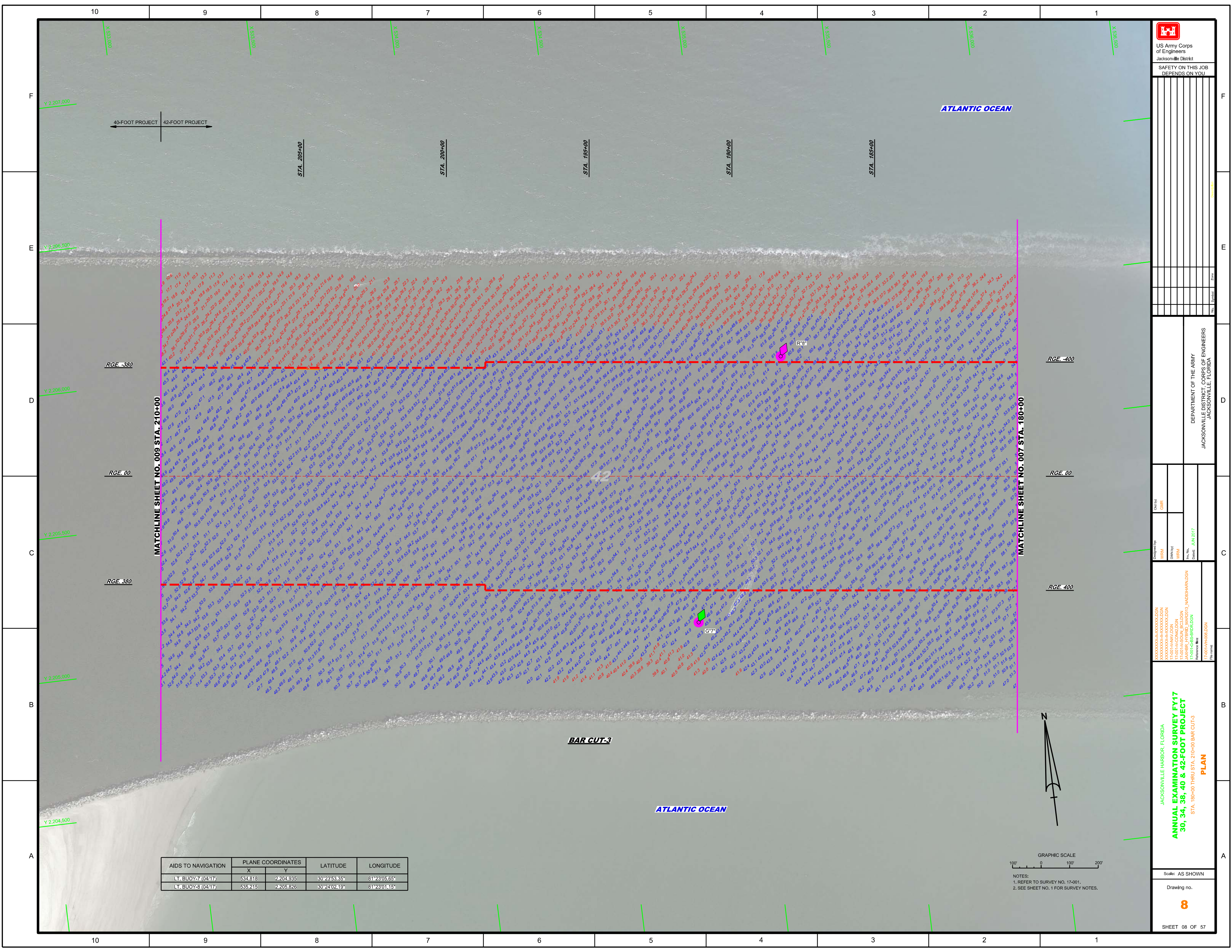


AIDS TO NAVIGATION	PLANE COORDINATES		LATITUDE	LONGITUDE
	X	Y		
LT-BUOY-5 (1116)	538.433	2,204.275	30°23'46.94"	81°22'24.35"
LT-BUOY-6 (1116)	538.435	2,205.559	30°23'49.65"	81°22'24.38"



NOTES:
1. REFER TO SURVEY NO. 17-001.
2. SEE SHEET NO. 1 FOR SURVEY NOTES.

DESIGNED BY VRM	CHECKED BY GHR
DRAWN BY VRM	DATE JUN 2017
<p>JACKSONVILLE HARBOR, FLORIDA ANNUAL EXAMINATION SURVEY FY17 30, 34, 38, 40 & 42-FOOT PROJECT STA. 150+00 THRU STA. 180+00 BAR CUT-3 PLAN</p>	
DEPARTMENT OF THE ARMY JACKSONVILLE DISTRICT, CORPS OF ENGINEERS JACKSONVILLE, FLORIDA	
SHEET 07 OF 57	



US Army Corps of Engineers

 Jacksonville District

 SAFETY ON THIS JOB

 DEPENDS ON YOU

DEPARTMENT OF THE ARMY

 JACKSONVILLE DISTRICT, CORPS OF ENGINEERS

 JACKSONVILLE, FLORIDA

Designed by: **WRM**

 Checked by: **GHR**

 Drawn by: **WRM**

 Date: **JUN 2017**

 Project: **17-001-HARBOR-DGN**

 Reference: **17-001-HARBOR-DGN**

JACKSONVILLE HARBOR, FLORIDA

ANNUAL EXAMINATION SURVEY FY17

30, 34, 38, 40 & 42-FOOT PROJECT

 STA. 190+00 THRU STA. 210+00 BAR CUT-3

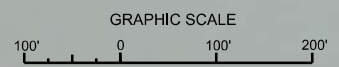
PLAN

 Scale: AS SHOWN

 Drawing no. **8**

 SHEET 08 OF 57

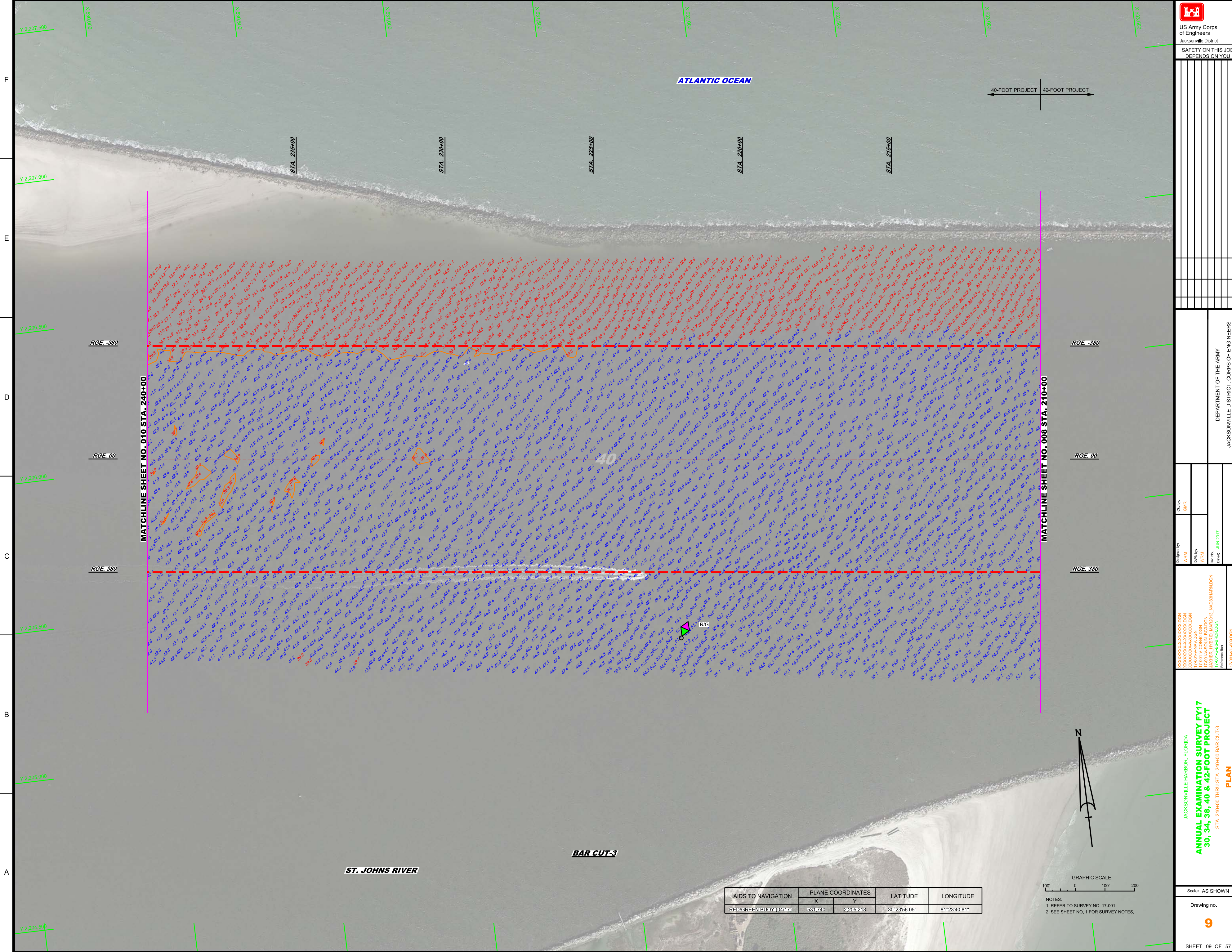
AIDS TO NAVIGATION	PLANE COORDINATES		LATITUDE	LONGITUDE
	X	Y		
LT. BUOY-7 (0417)	534.818	2,204.935	30°23'53.35"	81°23'05.65"
LT. BUOY-8 (0417)	535.245	2,205.826	30°24'02.49"	81°23'01.15"



NOTES:

 1. REFER TO SURVEY NO. 17-001.

 2. SEE SHEET NO. 1 FOR SURVEY NOTES.



AIDS TO NAVIGATION	PLANE COORDINATES		LATITUDE	LONGITUDE
	X	Y		
RED/GREEN BUOY (04/17)	531.740	2,205.218	30°23'56.05"	81°23'40.81"

GRAPHIC SCALE
 100' 0 100' 200'

NOTES:
 1. REFER TO SURVEY NO. 17-001.
 2. SEE SHEET NO. 1 FOR SURVEY NOTES.

US Army Corps of Engineers
Jacksonville District

SAFETY ON THIS JOB
DEPENDS ON YOU

<p>Matchline Sheet No. 010 STA. 240+00</p>	<p>Matchline Sheet No. 008 STA. 210+00</p>
--	--

<p>DEPARTMENT OF THE ARMY JACKSONVILLE DISTRICT, CORPS OF ENGINEERS JACKSONVILLE, FLORIDA</p>	<p>Scale: AS SHOWN</p> <p>Drawing no. 9</p> <p>SHEET 09 OF 57</p>
---	--



US Army Corps of Engineers
Jacksonville District

SAFETY ON THIS JOB
DEPENDS ON YOU

Scale: AS SHOWN

Drawing no.

11

SHEET 11 OF 57

JACKSONVILLE DISTRICT, CORPS OF ENGINEERS
JACKSONVILLE, FLORIDA

Department: JACKSONVILLE DISTRICT, CORPS OF ENGINEERS

Project: ANNUAL EXAMINATION SURVEY FY17

Sheet: 30, 34, 38, 40 & 42-FOOT PROJECT

Date: JUN 2017

Author: [unreadable]

Checker: [unreadable]

Scale: AS SHOWN

Drawing no.

11

SHEET 11 OF 57

JACKSONVILLE DISTRICT, CORPS OF ENGINEERS

JACKSONVILLE, FLORIDA

Department: JACKSONVILLE DISTRICT, CORPS OF ENGINEERS

Project: ANNUAL EXAMINATION SURVEY FY17

Sheet: 30, 34, 38, 40 & 42-FOOT PROJECT

Date: JUN 2017

Author: [unreadable]

Checker: [unreadable]

Scale: AS SHOWN

Drawing no.

11

SHEET 11 OF 57

JACKSONVILLE DISTRICT, CORPS OF ENGINEERS

JACKSONVILLE, FLORIDA

Department: JACKSONVILLE DISTRICT, CORPS OF ENGINEERS

Project: ANNUAL EXAMINATION SURVEY FY17

Sheet: 30, 34, 38, 40 & 42-FOOT PROJECT

Date: JUN 2017

Author: [unreadable]

Checker: [unreadable]

Scale: AS SHOWN

Drawing no.

11

SHEET 11 OF 57

JACKSONVILLE DISTRICT, CORPS OF ENGINEERS

JACKSONVILLE, FLORIDA

Department: JACKSONVILLE DISTRICT, CORPS OF ENGINEERS

Project: ANNUAL EXAMINATION SURVEY FY17

Sheet: 30, 34, 38, 40 & 42-FOOT PROJECT

Date: JUN 2017

Author: [unreadable]

Checker: [unreadable]

Scale: AS SHOWN

Drawing no.

11

SHEET 11 OF 57

JACKSONVILLE DISTRICT, CORPS OF ENGINEERS

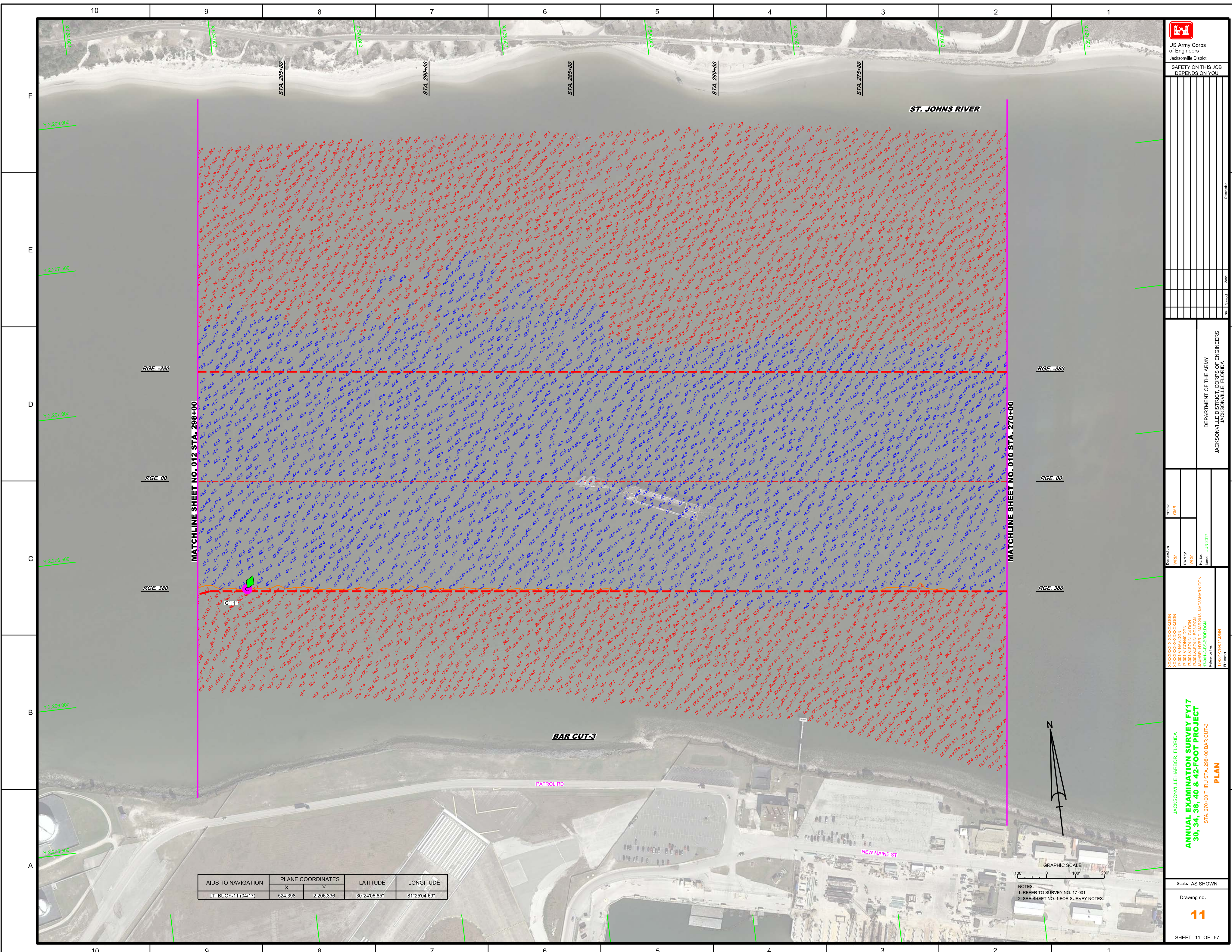
JACKSONVILLE, FLORIDA

Department: JACKSONVILLE DISTRICT, CORPS OF ENGINEERS

Project: ANNUAL EXAMINATION SURVEY FY17

Sheet: 30, 34, 38, 40 & 42-FOOT PROJECT

Date: JUN 2017



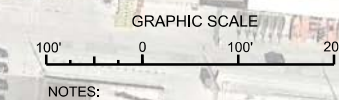
ST. JOHNS RIVER

BAR CUT-3

PATROL RD

NEW MAINE ST

AIDS TO NAVIGATION	PLANE COORDINATES	LATITUDE	LONGITUDE
	X	Y	
LT. BUOY-11 (04/17)	524,398	2,206,336	30°24'06.85" 81°25'04.69"



NOTES:
1. REFER TO SURVEY NO. 17-001.
2. SEE SHEET NO. 1 FOR SURVEY NOTES.

