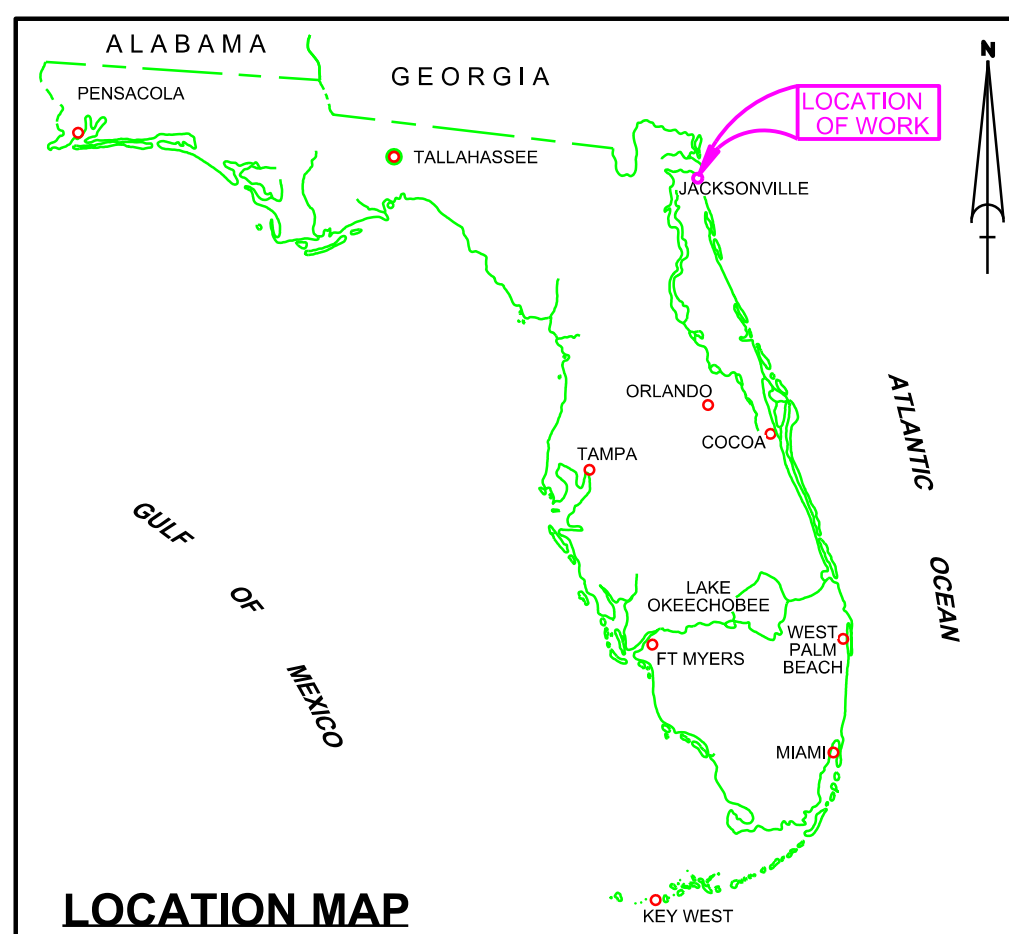


U.S. NAVAL STATION MAYPORT POST-HURRICANE MATTHEW EMERGENCY SURVEY FY16



SHEET INDEX



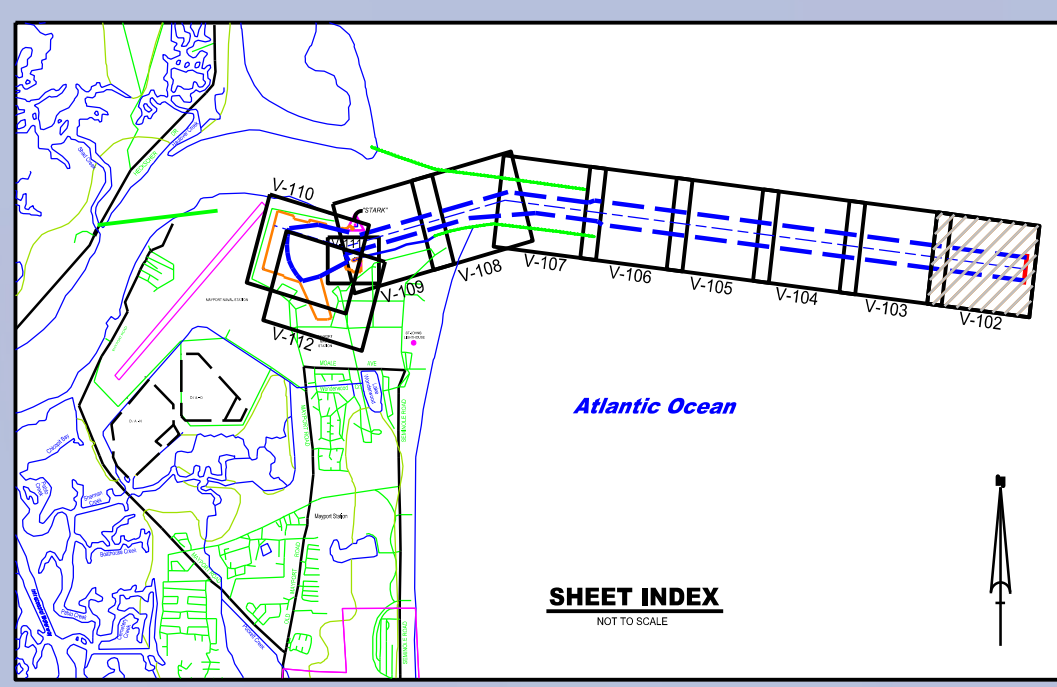
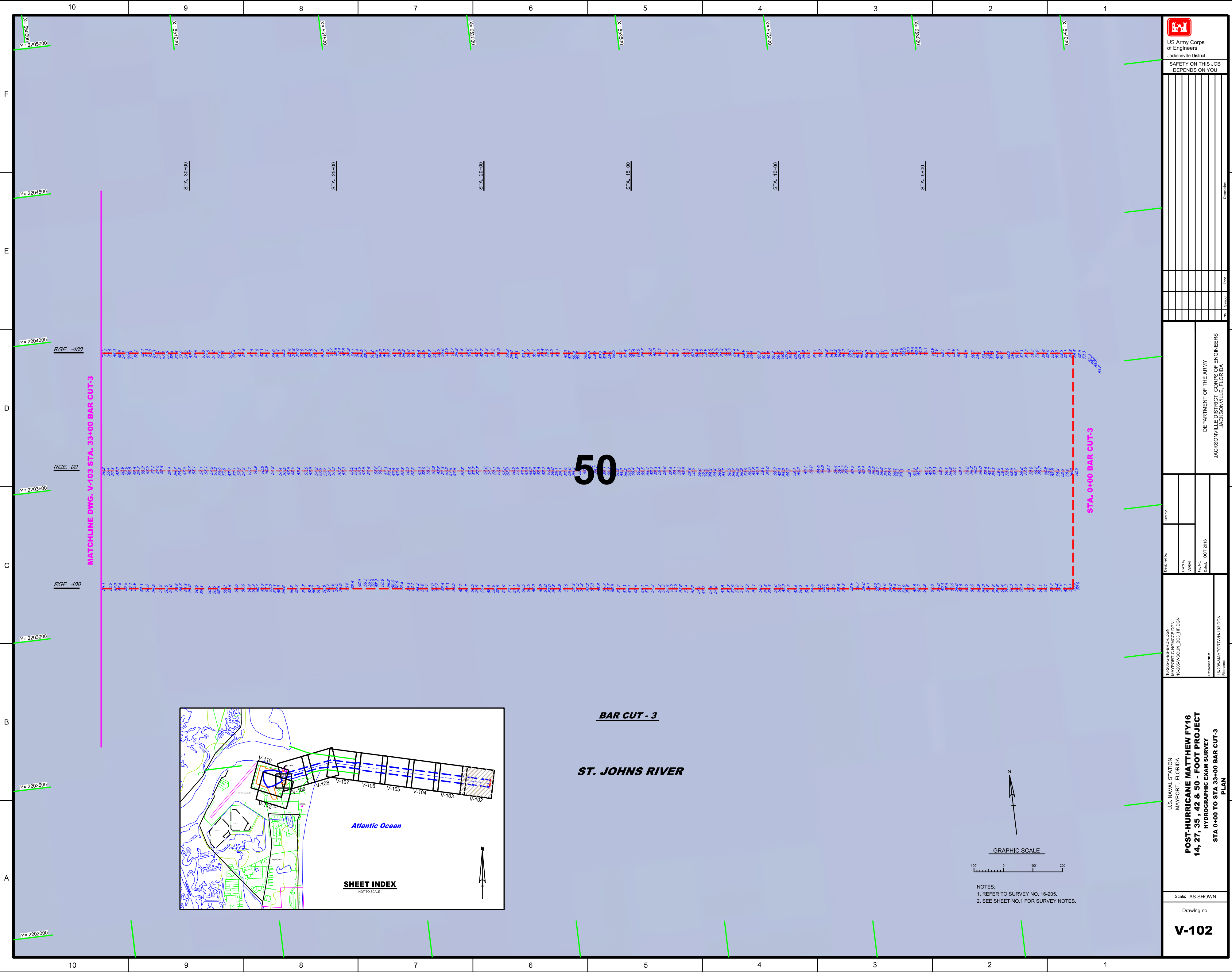
LOCATION MAP

LEGEND	
	MONUMENT
	LIGHTED BEACON
	GREEN DAY BEACON
	RED DAY BEACON
	RED LIGHTED BUOY
	GREEN LIGHTED BUOY
	CAN BUOY
	NUN BUOY
	TIDE STAFF
	PROJECT DEPTH

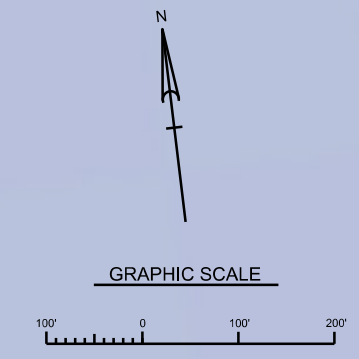
SURVEY NOTES

- REFER TO SURVEY NO. 16-205.
- DEPTHS DEPICTED BY THIS SURVEY ARE REFERENCED TO MLLW, TIDAL EPOCH 1983-2001 AS REPORTED BY THE NATIONAL OCEANIC AND ATMOSPHERIC ADMINISTRATION (NOAA). NOAA'S VDATUM MODEL WAS USED AND CALIBRATED TO THE PUBLISHED MLLW HEIGHTS OF THE BENCHMARKS ASSOCIATED WITH THE TIDE GAGE SITES SPECIFIED BELOW.
NOAA TIDAL STATION "8724211" MAYPORT NAVAL STATION, ST. JOHNS RIVER FOR ENTIRE PROJECT.
- TIDAL REDUCTIONS WERE OBTAINED UTILIZING A REAL-TIME KINEMATIC (RTK) GPS AND REFERENCED TO MLLW UTILIZING A HYPACK KINEMATIC TIDE DATUM (KTD) MODEL. KTD FILE NAME IS: "CAMDNGA-NASSAU-DUVAL-STJOHNS-FLAGLER_01FEB2011.KTD".
- ALL ELEVATIONS ARE BELOW THE CHART DATUM UNLESS PRECEDED BY A (+) SIGN.
- PLANE COORDINATES ARE BASED ON THE TRANSVERSE MERCATOR PROJECTION FOR THE EAST ZONE OF FLORIDA AND REFERENCED TO NORTH AMERICAN DATUM OF 1983 (NAD83).
- ALL STATIONING REFERS TO THE CENTERLINE OF THE CHANNEL.
- THIS SURVEY WAS PERFORMED USING REAL-TIME KINEMATIC (RTK) GPS POSITIONING WITH THE FOLLOWING REFERENCE BASE LOCATION:
REFERENCE BASE LOCATED AT "CHARLIE TOWER" (OPUS PID: BDDC09)
TIDE STAFF LOCATED FROM "STARK" (OPUS PID: BBB299)
- VERTICAL MEASUREMENTS WERE MADE USING A ROSS MODEL 835B SMART-SONDER WITH A DUAL-FREQUENCY 28200 KHZ SINGLE-BEAM TRANSDUCER AND A 2250HZ 2024 MULTIBEAM SYSTEM. SOUNDINGS SHOWN ARE IN HIGH FREQUENCY (200KHZ) FOR STA. 0+00 THRU STA. 198+63.25 BAR CUT-3. STA. 0+00 THRU STA. 63+41.62 OF THE ENTRANCE CHANNEL AND LOW FREQUENCY (28 KHZ) FROM THE TURNING BASIN, DESTROYER SLIP AND THE SMALL BOAT BASIN.
VESSEL DATE OF SURVEY CUT
SB-48 08 OCT 2016 DESTROYER SLIP, SMALL BOAT BASIN, TURNING BASIN, BAR CUT-3, ENTRANCE CHANNEL
- AIDS TO NAVIGATION WERE LOCATED DURING THIS SURVEY.
- THE INFORMATION DEPICTED ON THIS MAP REPRESENTS THE RESULTS OF SURVEYS MADE ON THE DATES INDICATED ABOVE AND CAN ONLY BE CONSIDERED AS INDICATING THE GENERAL CONDITIONS AT THAT TIME. THIS CHART IS SOLELY FOR THE DISTRIBUTION OF AVAILABLE DEPTHS AT THE TIME OF THE SURVEY.
- SURVEY ACCURACY PERFORMANCE STANDARDS, QUALITY CONTROL, AND QUALITY ASSURANCE REQUIREMENTS WERE FOLLOWED DURING THIS SURVEY IN ACCORDANCE WITH USACE EM 1110-2-1003, HYDROGRAPHIC SURVEYING, 30 NOV 2013.

16-205-G-85-84010.DGN MAYPORT-CHANGING.DGN 16-205-MAAYPORT-VH-101.DGN 16-205-MAAYPORT-VH-101.DGN	DESIGNED BY: DRAWN BY: WRM DATE: OCT 2016	DEPARTMENT OF THE ARMY JACKSONVILLE DISTRICT, CORPS OF ENGINEERS JACKSONVILLE, FLORIDA	U.S. NAVAL STATION MAYPORT, FLORIDA POST-HURRICANE MATTHEW FY16 14, 27, 35, 42 & 50 - FOOT PROJECT HYDROGRAPHIC EXAM SURVEY
Scale: AS SHOWN		Drawing no. VH-101	



BAR CUT - 3
ST. JOHNS RIVER

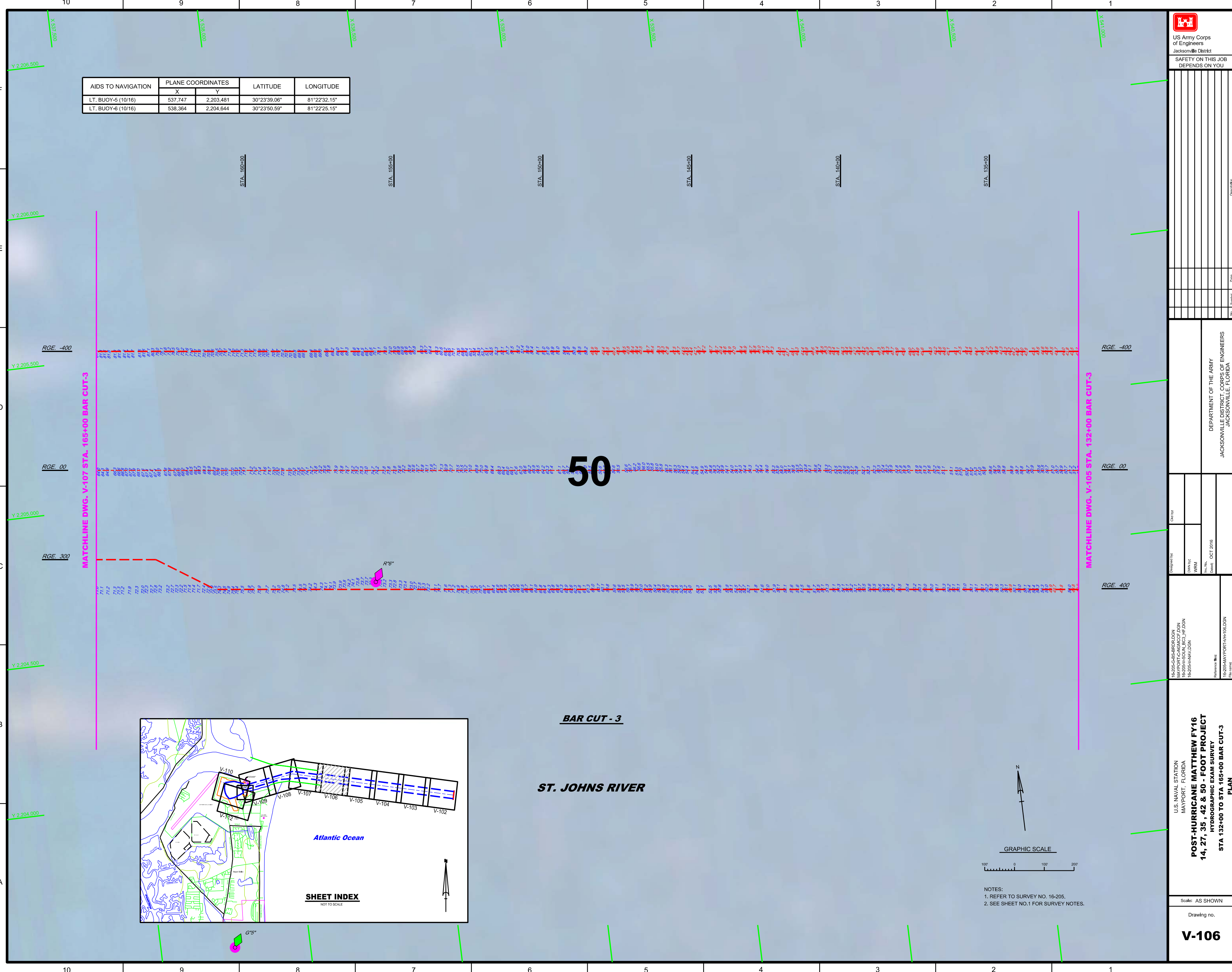


<p>US Army Corps of Engineers Jacksonville District SAFETY ON THIS JOB DEPENDS ON YOU</p>	
<p>16-205-48-BR102.DGN 16-205-48-ENGINEER.DGN 16-205-48-SUBMITTALS.DGN</p>	<p>16-205-48-PORTA-H-102.DGN 16-205-48-PORTA-H-102.DGN</p>
<p>DESIGNED BY: WRM DRAWN BY: WRM CHECKED BY: WRM DATE: OCT 2016</p>	<p>DEPARTMENT OF THE ARMY JACKSONVILLE DISTRICT, CORPS OF ENGINEERS JACKSONVILLE, FLORIDA</p>
<p>U.S. NAVAL STATION MAYPORT, FLORIDA</p> <p>POST-HURRICANE MATTHEW FY16 14, 27, 35, 42 & 50 - FOOT PROJECT HYDROGRAPHIC EXAM SURVEY STA 0+00 TO STA 33+00 BAR CUT-3 PLAN</p>	
<p>Scale: AS SHOWN</p> <p>Drawing no. V-102</p>	

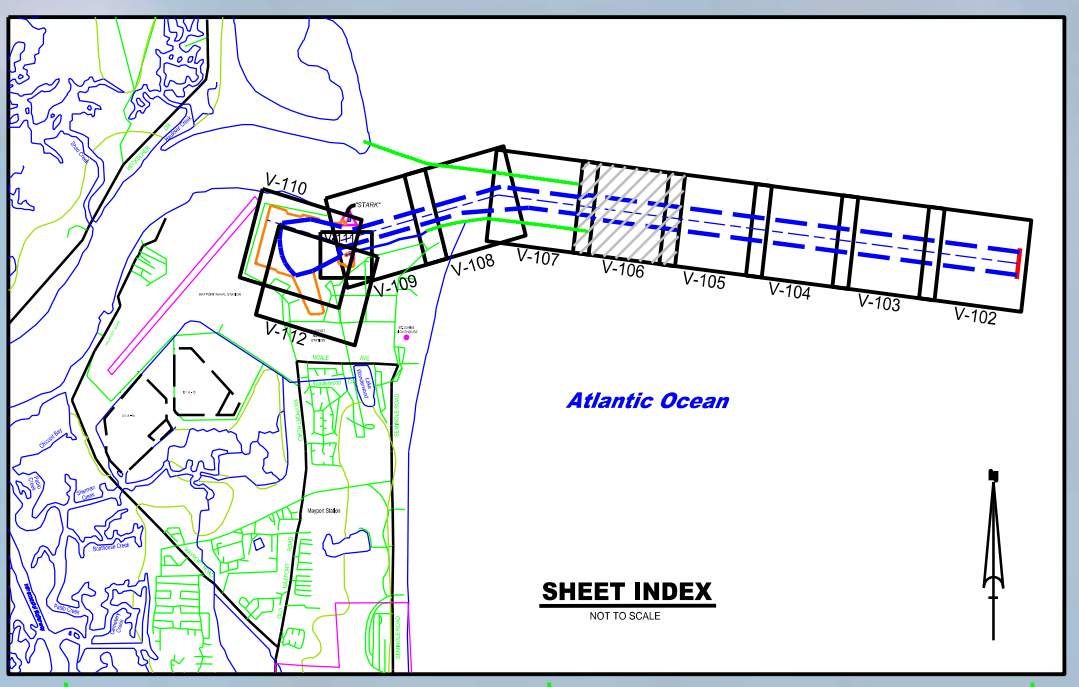
AIDS TO NAVIGATION	PLANE COORDINATES		LATITUDE	LONGITUDE
	X	Y		
LT. BUOY-5 (10/16)	537,747	2,203,481	30°23'39.06"	81°22'32.15"
LT. BUOY-6 (10/16)	538,364	2,204,644	30°23'50.59"	81°22'25.15"

F
E
D
C
B
A

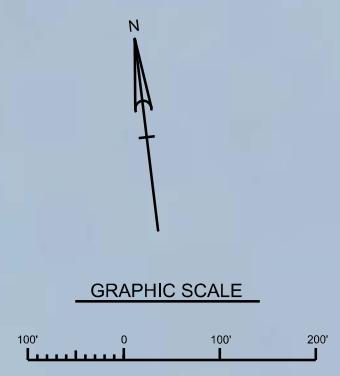
F
E
D
C
B
A



50



BAR CUT - 3
ST. JOHNS RIVER



DEPARTMENT OF THE ARMY
JACKSONVILLE DISTRICT, CORPS OF ENGINEERS
JACKSONVILLE, FLORIDA

Designed by: [Blank]
Drawn by: WRM
Checked by: [Blank]
Date: OCT 2016

16-205-G-BS-BRDLDGN
16-205-PORT-ENG-CE-DGN
16-205-NAV-DGN

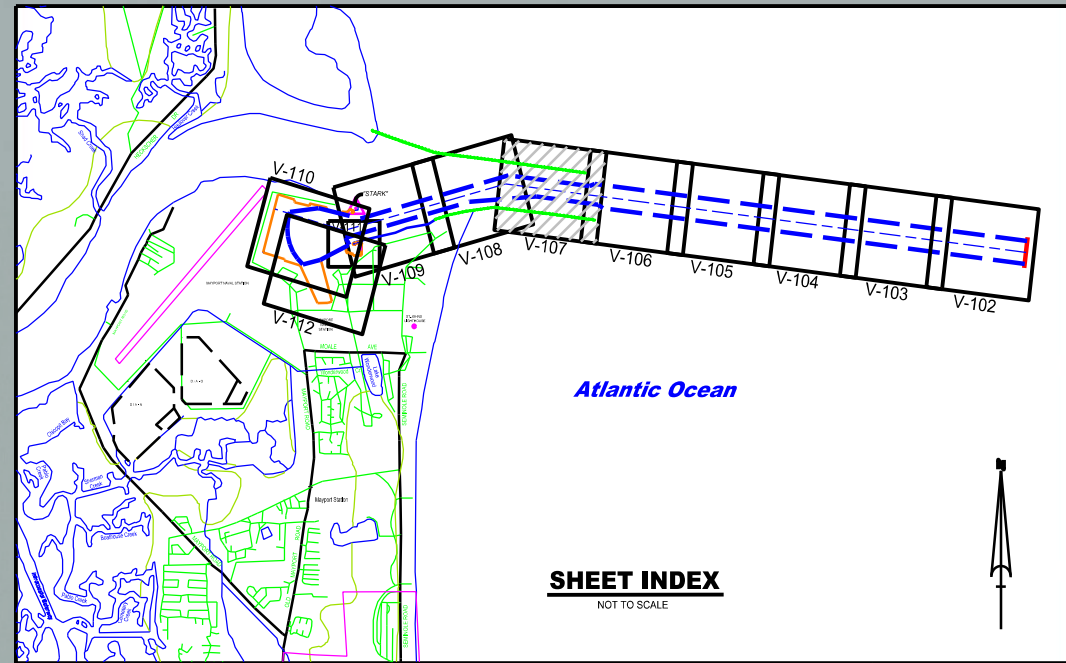
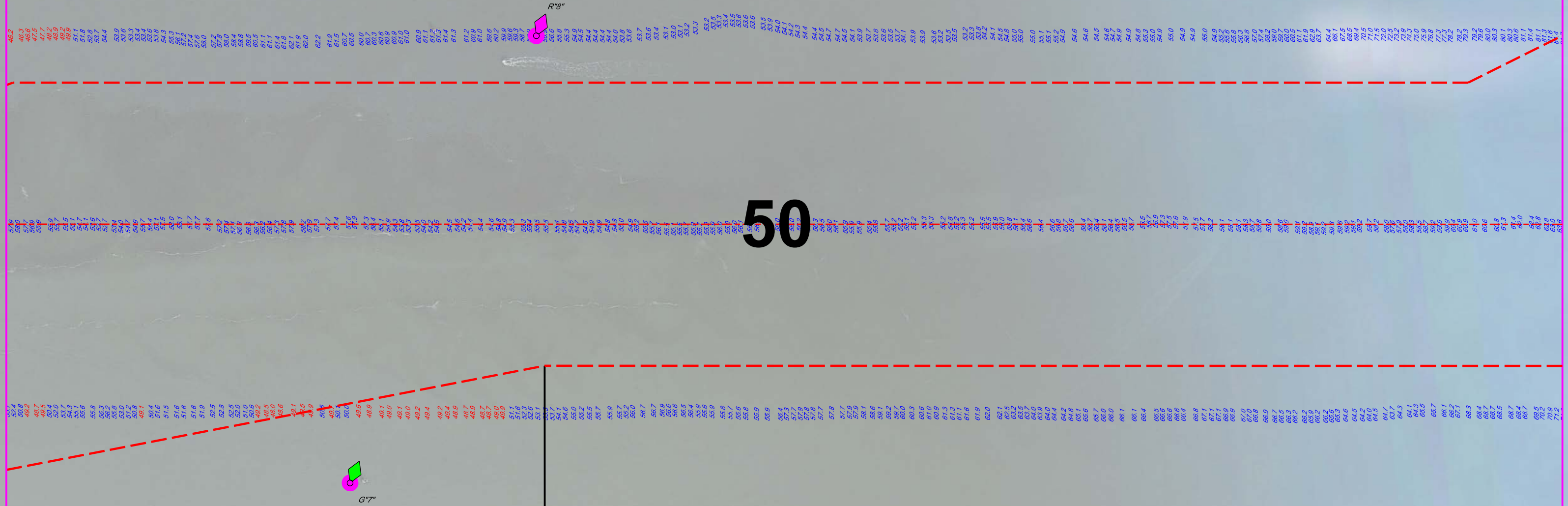
Reference files:
16-205-NAV-PORT-VH-106LDGN
16-205-NAV-PORT-VH-106DGN

U.S. NAVAL STATION
MAYPORT, FLORIDA

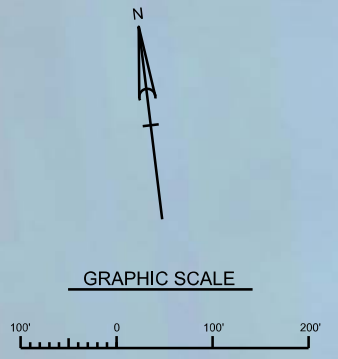
**POST-HURRICANE MATTHEW FY16
14, 27, 35, 42 & 50 - FOOT PROJECT
HYDROGRAPHIC EXAM SURVEY
STA 132+00 TO STA 165+00 BAR CUT-3
PLAN**

Scale: AS SHOWN
Drawing no.
V-106

AIDS TO NAVIGATION	PLANE COORDINATES		LATITUDE	LONGITUDE
	X	Y		
LT. BUOY-7 (10/16)	534,859	2,204,893	30°23'52.94"	81°23'05.19"
LT. BUOY-8 (10/16)	535,365	2,205,787	30°24'01.80"	81°22'59.45"



BAR CUT - 3
ST. JOHNS RIVER



NOTES:
1. REFER TO SURVEY NO. 16-205.
2. SEE SHEET NO.1 FOR SURVEY NOTES.

US Army Corps of Engineers
Jacksonville District
SAFETY ON THIS JOB
DEPENDS ON YOU

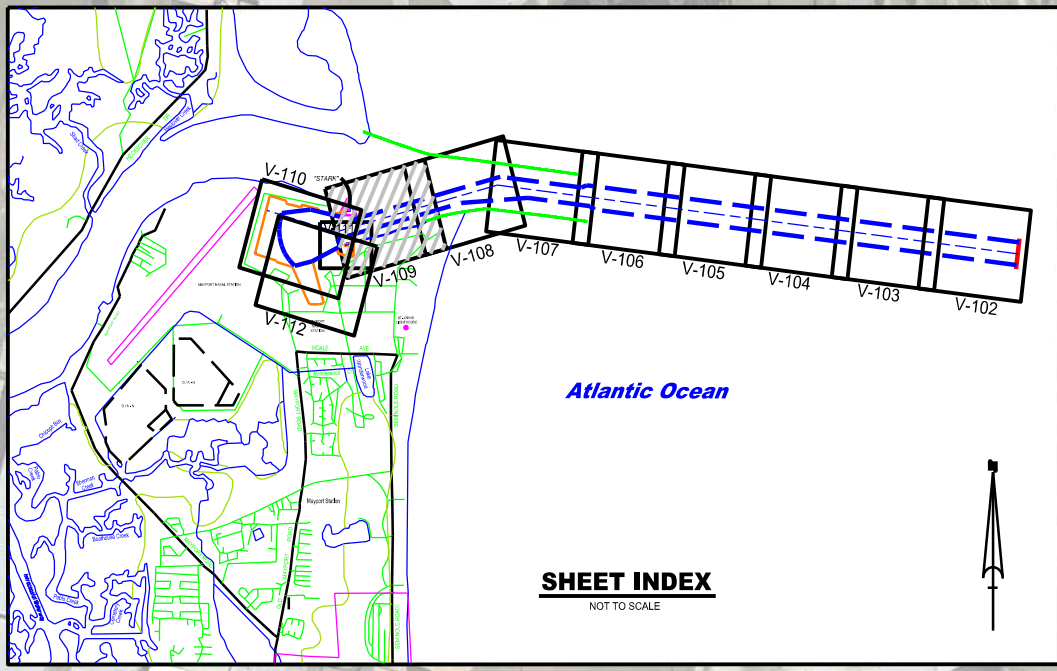
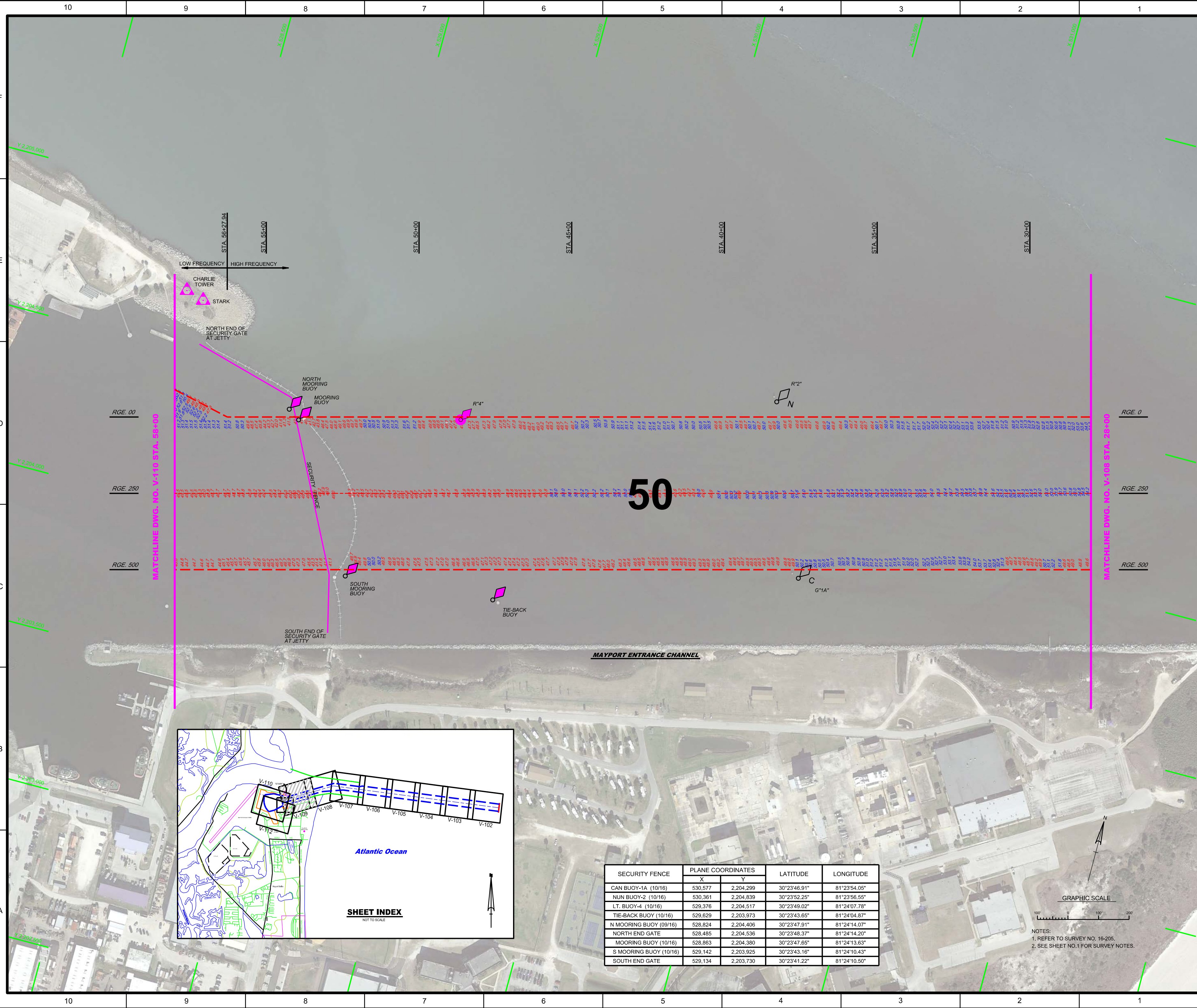
DEPARTMENT OF THE ARMY
JACKSONVILLE DISTRICT, CORPS OF ENGINEERS
JACKSONVILLE, FLORIDA

Drawn by: _____
 Designated by: _____
 Date: _____
 File name: 16-205-NAV-DGN

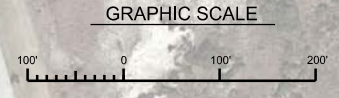
U.S. NAVAL STATION
 MAYPORT, FLORIDA
POST-HURRICANE MATTHEW FY16
14, 27, 35, 42 & 50 - FOOT PROJECT
 HYDROGRAPHIC EXAM SURVEY
 STA 165+00 TO STA 198+00 BAR CUT-3
PLAN

Scale: AS SHOWN

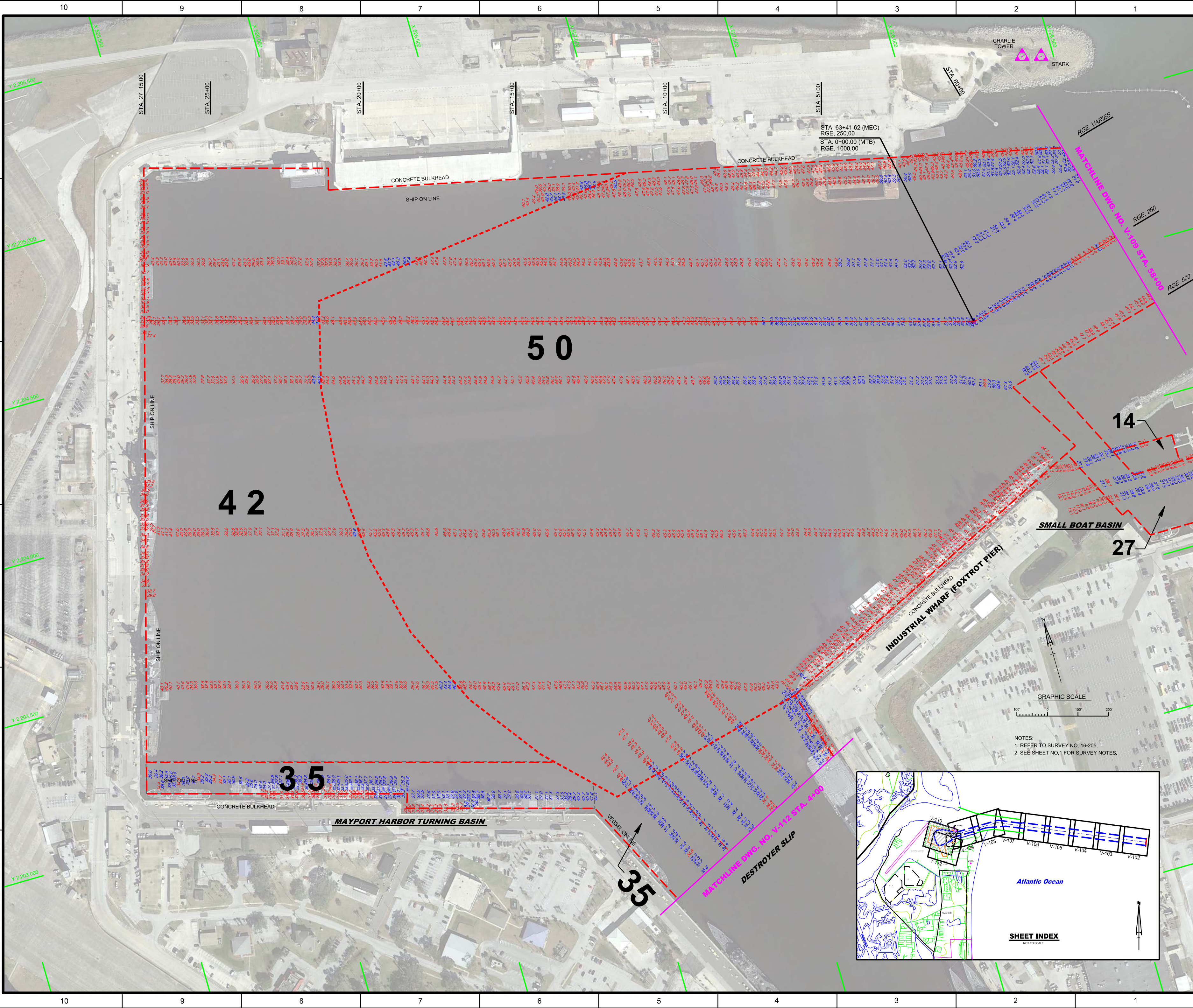
Drawing no.
V-107



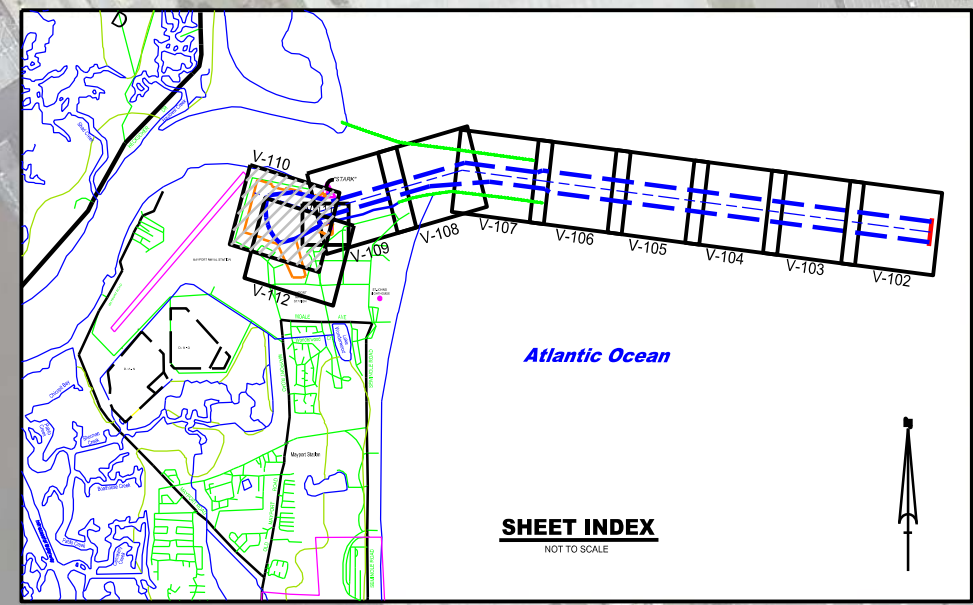
SECURITY FENCE	PLANE COORDINATES		LATITUDE	LONGITUDE
	X	Y		
CAN BUOY-1A (10/16)	530,577	2,204,299	30°23'46.91"	81°23'54.05"
NUN BUOY-2 (10/16)	530,361	2,204,839	30°23'52.25"	81°23'56.55"
LT. BUOY-4 (10/16)	529,376	2,204,517	30°23'49.02"	81°24'07.78"
TIE-BACK BUOY (10/16)	529,629	2,203,973	30°23'43.65"	81°24'04.87"
N MOORING BUOY (09/16)	528,824	2,204,406	30°23'47.91"	81°24'14.07"
NORTH END GATE	528,485	2,204,536	30°23'48.37"	81°24'14.20"
MOORING BUOY (10/16)	528,863	2,204,380	30°23'47.65"	81°24'13.63"
S MOORING BUOY (10/16)	529,142	2,203,925	30°23'43.16"	81°24'10.43"
SOUTH END GATE	529,134	2,203,730	30°23'41.22"	81°24'10.50"



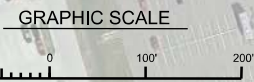
NOTES:
1. REFER TO SURVEY NO. 16-205.
2. SEE SHEET NO.1 FOR SURVEY NOTES.

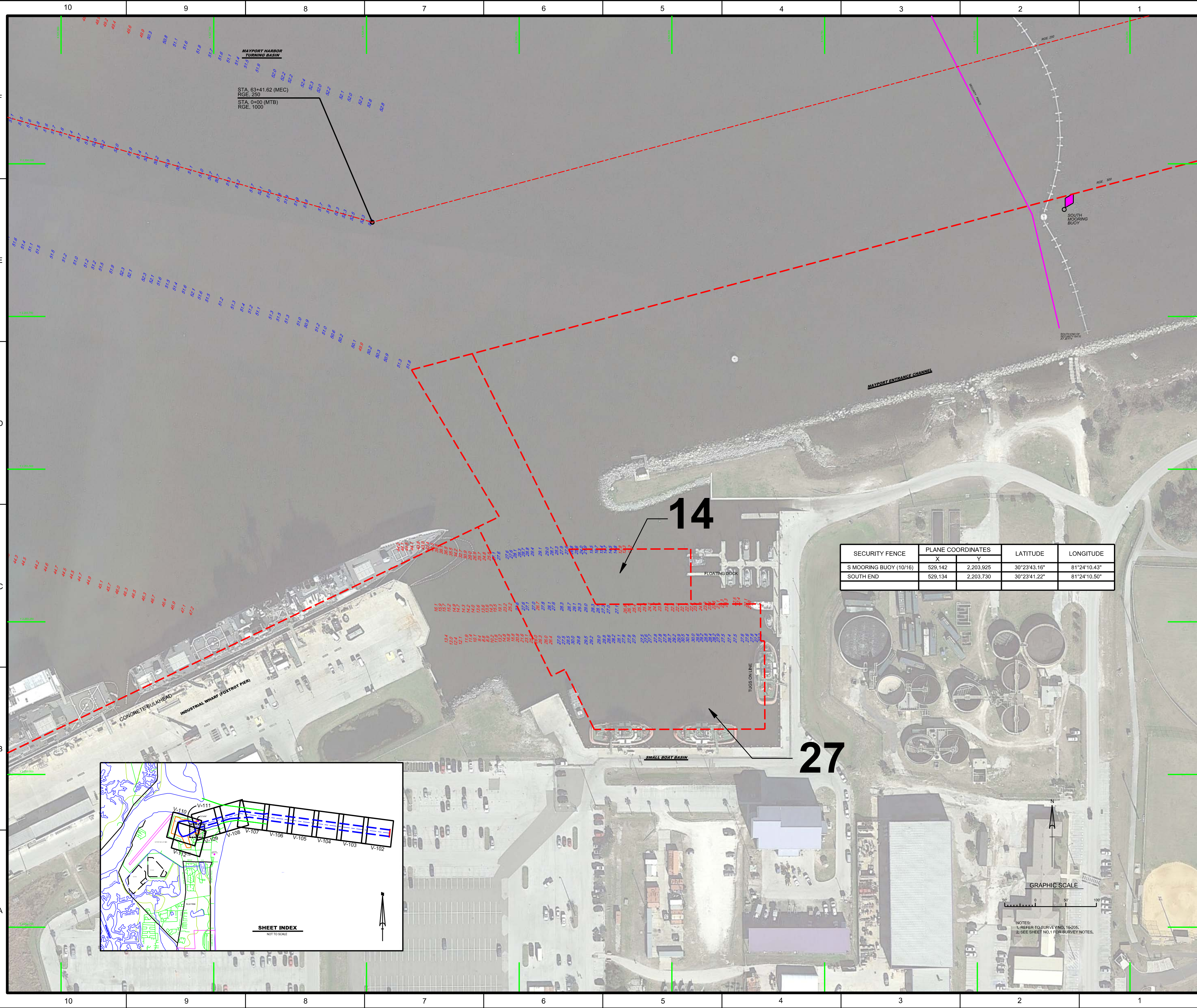


<p>US Army Corps of Engineers Jacksonville District SAFETY ON THIS JOB DEPENDS ON YOU</p>	
<p>DEPARTMENT OF THE ARMY JACKSONVILLE DISTRICT, CORPS OF ENGINEERS JACKSONVILLE, FLORIDA</p>	
<p>Drawn by: [Blank]</p>	<p>Checked by: [Blank]</p>
<p>Designed by: [Blank]</p>	<p>Date: OCT 2016</p>
<p>16-205-AS-BR/BL/DGN MAYPORT-HARBOR/DGN 16-205-AS-SOUL_LF/DGN 16-205-AS-SOUL_TB/DGN 16-205-AS-SOUL_FOX_TROT_LF/DGN 16-205-AS-SOUL_SBB_LF_100SCALE/DGN</p>	<p>Scale: AS SHOWN</p>
<p>POST-HURRICANE MATTHEW FY16 14, 27, 35, 42 & 50 - FOOT PROJECT HYDROGRAPHIC EXAM SURVEY TURNING BASIN PLAN</p>	
<p>Drawing no. V-110</p>	<p>Scale: AS SHOWN</p>



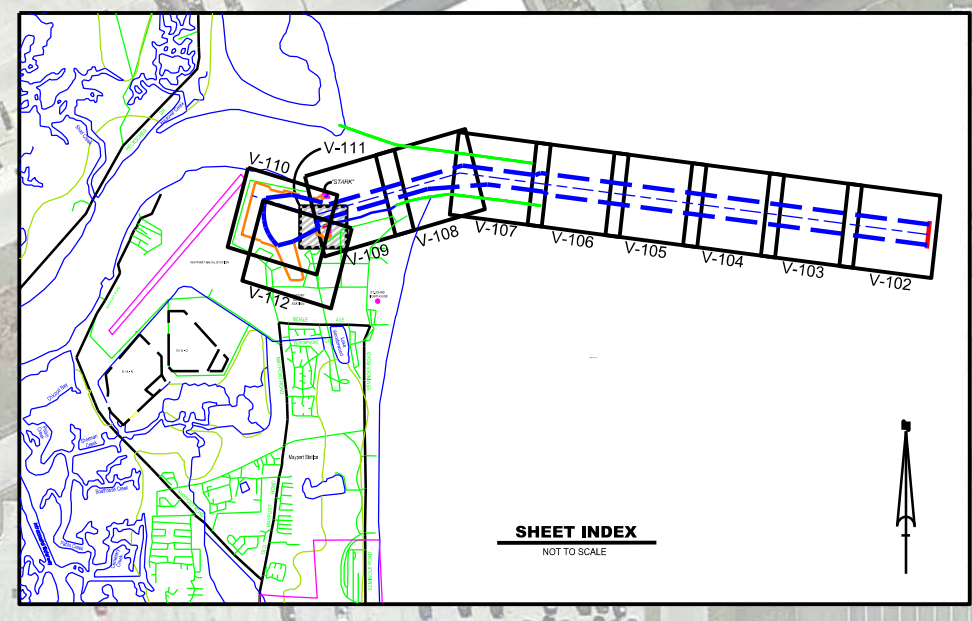
NOTES:
1. REFER TO SURVEY NO. 16-205.
2. SEE SHEET NO. 1 FOR SURVEY NOTES.





STA. 63+41.62 (MEC)
RGE. 250
STA. 0+00 (MTB)
RGE. 1000

SECURITY FENCE	PLANE COORDINATES		LATITUDE	LONGITUDE
	X	Y		
S MOORING BUOY (10/16)	529,142	2,203,925	30°23'43.16"	81°24'10.43"
SOUTH END	529,134	2,203,730	30°23'41.22"	81°24'10.50"



NOTES:
1. REFER TO SURVEY NO. 16-205.
2. SEE SHEET NO. 1 FOR SURVEY NOTES.

50

35

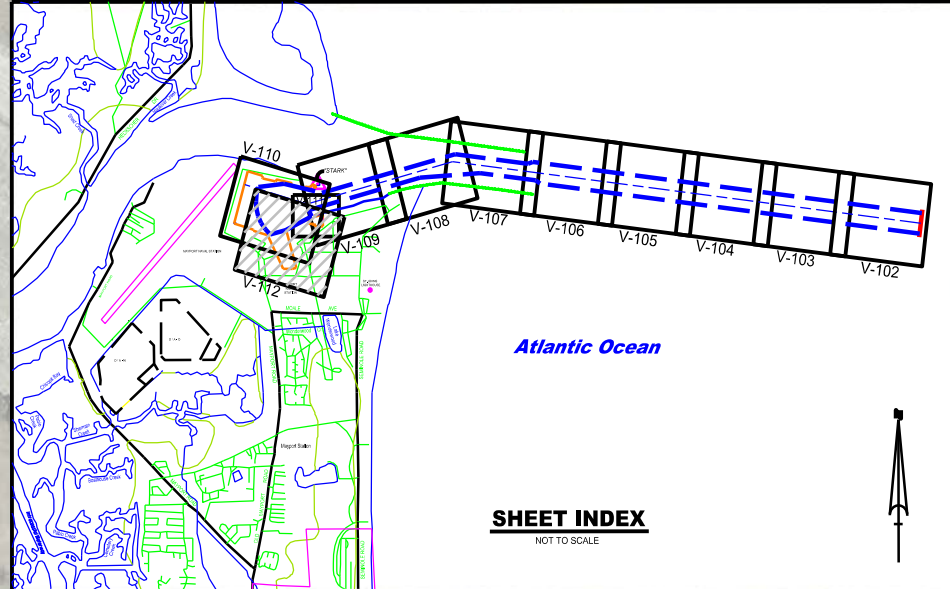
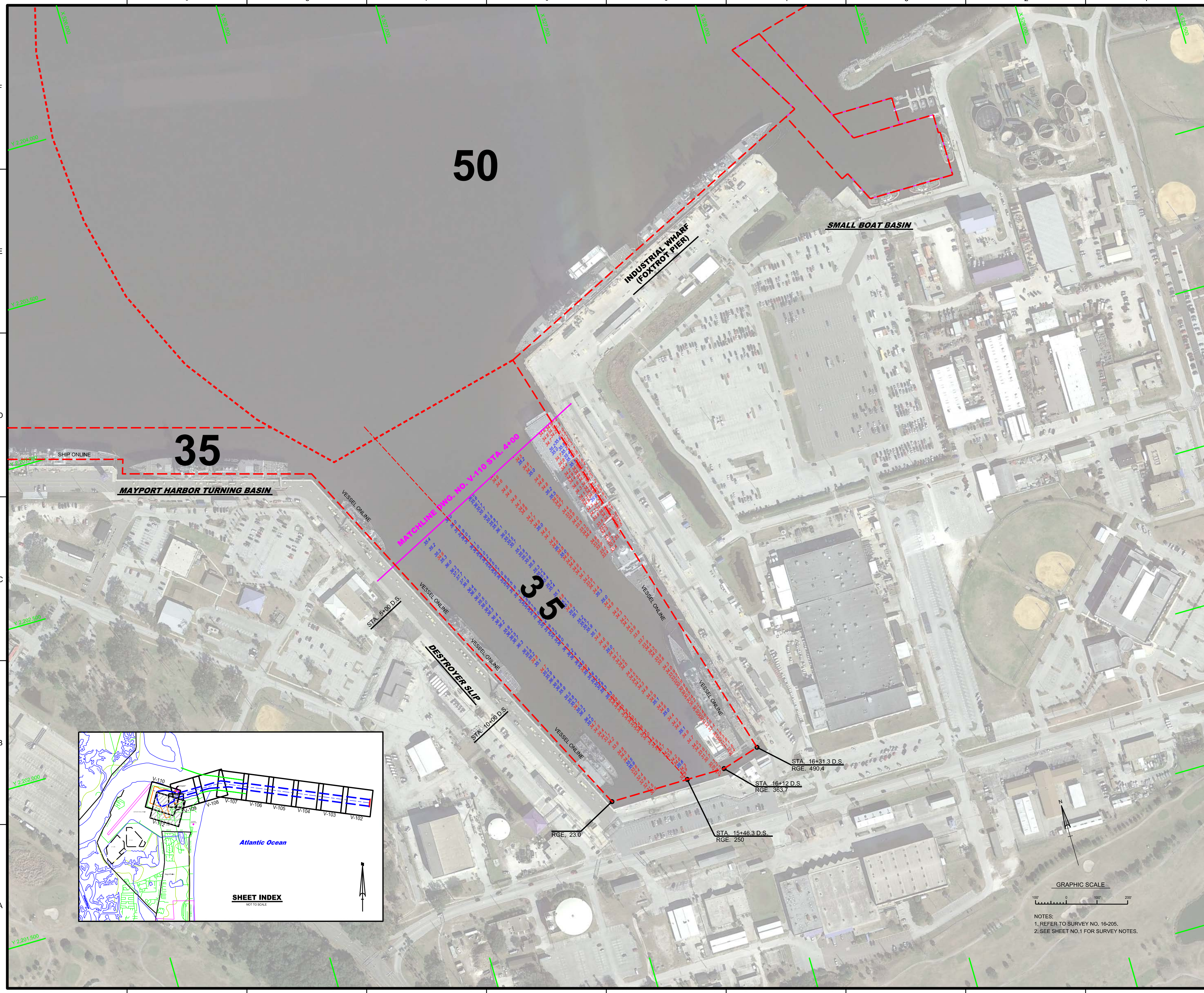
35

DEPARTMENT OF THE ARMY
 JACKSONVILLE DISTRICT, CORPS OF ENGINEERS
 JACKSONVILLE, FLORIDA

U.S. NAVAL STATION
 MAYPORT, FLORIDA
 16-205-48-BR/BLDGN
 MAYPORT-HIGHWATER-DON
 16-205-45-0001_LB_LF.DGN
 16-205-45-0001_VH112.DGN

POST-HURRICANE MATTHEW FY16
 14, 27, 35, 42 & 50 - FOOT PROJECT
 HYDROGRAPHIC EXAM SURVEY
 DESTROYER SLIP
 PLAN

Scale: AS SHOWN
 Drawing no.
V-112



GRAPHIC SCALE
 100' 0 100' 200'
 NOTES:
 1. REFER TO SURVEY NO. 16-205.
 2. SEE SHEET NO.1 FOR SURVEY NOTES.