

IWW JACKSONVILLE TO MIAMI PALM BEACH COUNTY CUTS P-35 STA. 20+00 THRU CUT P-36 STA. 10+00 HYDROGRAPHIC EXAM SURVEY FY16

SURVEY NOTES

1. REFER TO SURVEY NO. 16-197.
 2. SOUNDINGS ARE IN FEET AND TENTHS AND REFER TO NOAA'S REPORTED MEAN LOWER LOW WATER (MLLW) OF THE 1983-2001 TIDAL EPOCH.
 3. TIDAL REDUCTIONS WERE OBTAINED UTILIZING A REAL-TIME KINEMATIC (RTK) GPS AND REFERENCED TO MLLW UTILIZING A HYPACK KINEMATIC TIDE DATUM (KTD) MODEL. KTD FILE NAME IS: "PALMBEACH-BROWARD_2016 05 26.KTD".
 4. ALL ELEVATIONS ARE BELOW THE CHART DATUM UNLESS PRECEDED BY A (+) SIGN.
 5. PLANE COORDINATES ARE BASED ON THE TRANSVERSE MERCATOR PROJECTION FOR THE EAST ZONE OF FLORIDA AND REFERENCED TO NORTH AMERICAN DATUM OF 1983 (NAD83).
 6. ALL STATIONING REFERS TO THE CENTERLINE OF THE CHANNEL.
 7. THIS SURVEY WAS PERFORMED USING REAL-TIME KINEMATIC (RTK) GPS POSITIONING WITH THE FOLLOWING REFERENCE BASE LOCATION:
REFERENCE BASE LOCATED AT "WOLFE" (PID: BBB246)
 8. DEPTHS DEPICTED BY THIS SURVEY ARE REFERENCED TO MLLW, TIDAL EPOCH 1983-2001 AS REPORTED BY THE NATIONAL OCEANIC AND ATMOSPHERIC ADMINISTRATION (NOAA). NOAA'S VDATUM MODEL WAS USED AND CALIBRATED TO THE PUBLISHED MLLW HEIGHTS OF THE BENCHMARKS SPECIFIED BELOW:
NGS BENCHMARK FOR CUT P-35 THRU P-36 (PID: AD2870).
VERTICAL MEASUREMENTS WERE MADE USING A R2SONIC 2024 MULTI-BEAM SENSOR OPERATING AT 240 KHZ (HIGH FREQUENCY) FOR ALL CUTS. ALL SOUNDINGS SHOWN ARE IN HIGH FREQUENCY.
- | VESSEL | DATE OF SURVEY | CUT |
|--------|----------------|------------|
| SB-46 | 24 SEP 2016 | P-35, P-36 |
9. AIDS TO NAVIGATION WERE LOCATED DURING THIS SURVEY.
 10. THE INFORMATION DEPICTED ON THIS MAP REPRESENTS THE RESULTS OF SURVEYS MADE ON THE DATES INDICATED ABOVE AND CAN ONLY BE CONSIDERED AS INDICATING THE GENERAL CONDITIONS AT THAT TIME. THIS CHART IS SOLELY FOR THE DISTRIBUTION OF AVAILABLE DEPTHS AT THE TIME OF THE SURVEY.
 11. SURVEY ACCURACY PERFORMANCE STANDARDS, QUALITY CONTROL, AND QUALITY ASSURANCE REQUIREMENTS WERE FOLLOWED DURING THIS SURVEY IN ACCORDANCE WITH USACE EM 1110-2-1003, HYDROGRAPHIC SURVEYING, 30 NOV 13.

LEGEND	
▲	MONUMENT
⚓	LIGHTED BEACON
■	GREEN DAYBEACON
▲	RED DAYBEACON
●	RED LIGHTED BUOY
●	GREEN LIGHTED BUOY
⚓	CAN BUOY
⚓	NUN BUOY
⚓	TIDE STAFF
8	PROJECT DEPTH

US Army Corps of Engineers
Jacksonville District
SAFETY ON THIS JOB
DEPENDS ON YOU

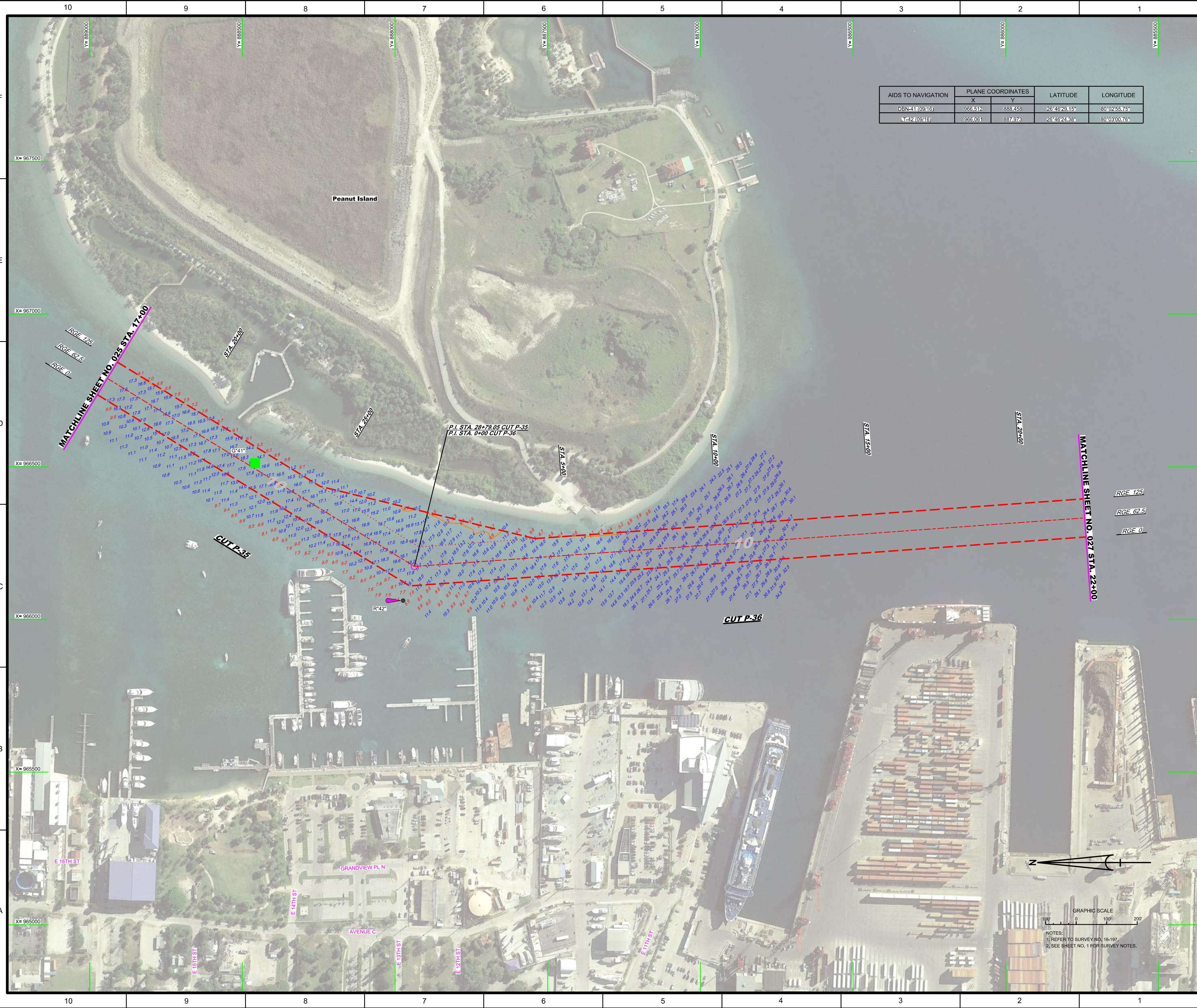
DEPARTMENT OF THE ARMY
JACKSONVILLE DISTRICT, CORPS OF ENGINEERS
JACKSONVILLE, FLORIDA

CUTS P-35 STA. 20+00 THRU CUT P-36 STA. 10+00
HYDROGRAPHIC EXAM SURVEY
INDEX, LOCATION AND VICINITY
MAP

Scale: AS SHOWN

Drawing no.
1 / 2

SHEET 01 OF 76



AIDS TO NAVIGATION	PLANE COORDINATES		LATITUDE	LONGITUDE
	X	Y		
DBN-41 (09/16)	966512	888458	26°46'29.15"	80°02'55.75"
L-24 (02/16)	966561	887978	26°46'24.38"	80°03'00.76"



DEPARTMENT OF THE ARMY
JACKSONVILLE DISTRICT, CORPS OF ENGINEERS
JACKSONVILLE, FLORIDA

Checked By: GHR
Designed By: WRM
Drawn By: WRM
File No: 16-197-PA-001-PA-001
Contract: SEP 2016

XXXXXXXXXXXXXXXXXXXX
XXXXXXXXXXXXXXXXXXXX
XXXXXXXXXXXXXXXXXXXX
16-197-PA-001-PA-001
16-197-PA-001-PA-001
16-197-PA-001-PA-001
16-197-PA-001-PA-001
16-197-PA-001-PA-001
16-197-PA-001-PA-001
16-197-PA-001-PA-001

INTRACOASTAL WATERWAY
JACKSONVILLE TO MIAMI, FLORIDA
PALM BEACH COUNTY
CUTS P-35 STA. 20+00 THRU CUT P-36 STA. 10+00
HYDROGRAPHIC EXAM SURVEY
STA. 17+00 CUT P-35 THRU STA. 22+00 CUT P-36
PLAN



NOTES:
1. REFER TO SURVEY NO. 16-197.
2. SEE SHEET NO. 1 FOR SURVEY NOTES.

Scale: AS SHOWN

Drawing no.
2 / 2