

CEDAR ISLAND / KEATON BEACH TAYLOR COUNTY, FLORIDA POST-HURRICANE HERMINE EXAMINATION SURVEY FY16 4-FOOT PROJECT

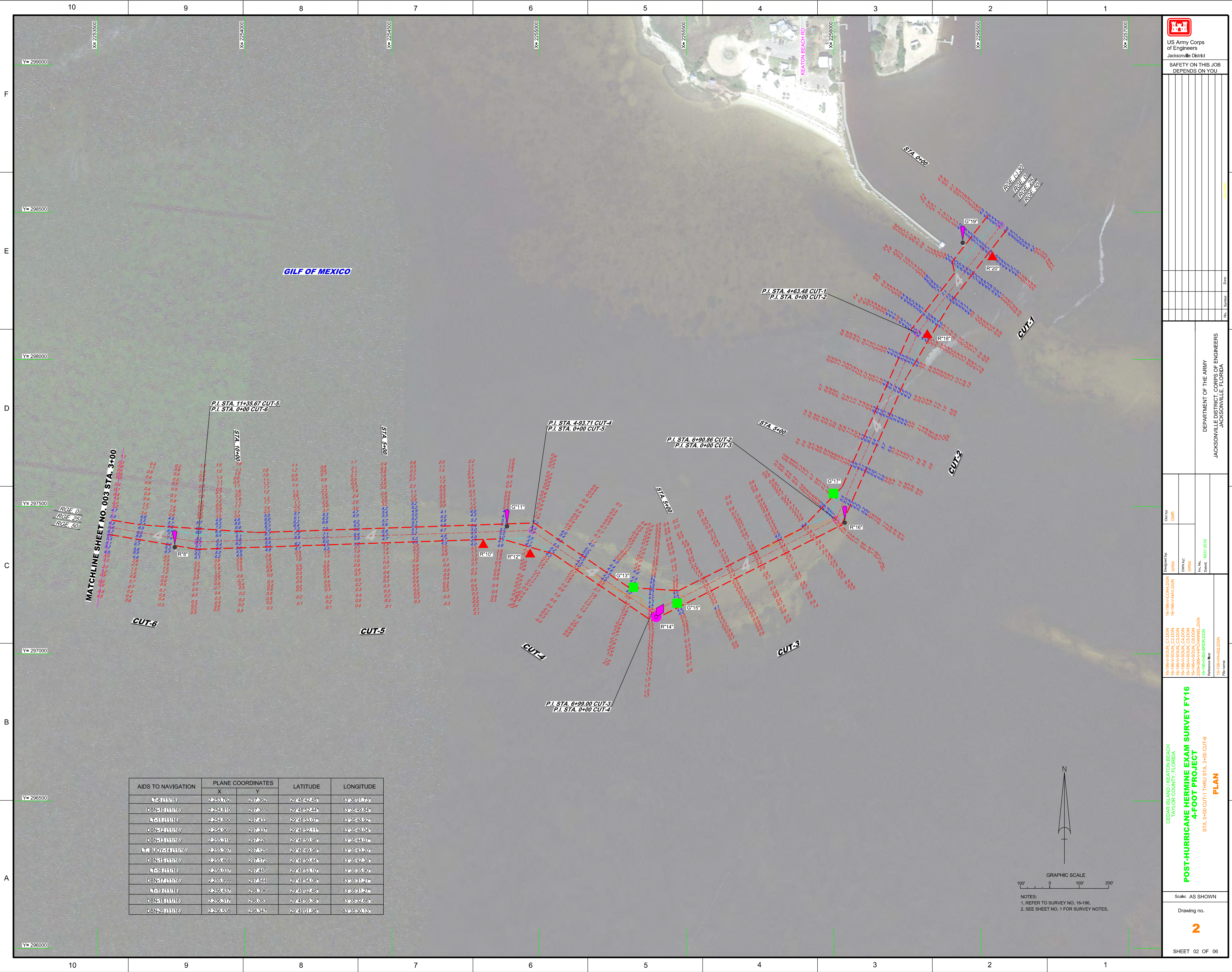
SURVEY NOTES

- REFER TO SURVEY NO. 16-196.
- SOUNDINGS ARE IN FEET AND TENTHS AND REFER TO NOAA'S REPORTED MEAN LOWER LOW WATER (MLLW) OF THE 1983-2001 TIDAL EPOCH.
- TIDAL REDUCTIONS WERE OBTAINED UTILIZING A REAL-TIME KINEMATIC (RTK) GPS AND REFERENCED TO MLLW UTILIZING A HYPACK KINEMATIC TIDE DATUM (KTD) MODEL. KTD FILE NAME: "SPC-FL-NORTH_20161026.KTD".
- ALL ELEVATIONS ARE BELOW THE CHART DATUM UNLESS PRECEDED BY A (+) SIGN.
- PLANE COORDINATES ARE BASED ON THE TRANSVERSE MERCATOR PROJECTION FOR THE NORTH ZONE OF FLORIDA (0903) AND REFERENCED TO NORTH AMERICAN DATUM OF 1983 (NAD83).
- ALL STATIONING REFERS TO THE CENTERLINE OF THE CHANNEL.
- THIS SURVEY WAS PERFORMED USING REAL-TIME KINEMATIC (RTK) GPS POSITIONING WITH THE FOLLOWING REFERENCE BASE LOCATIONS:
REFERENCE BASE LOCATED AT "KB-1" (OPUS PID: BBFJ94)
MEASURE DOWN POINT WAS ESTABLISHED ON TOP OF WOODEN BULK-HEAD SET FROM "KB-2".
- DEPTHS DEPICTED BY THIS SURVEY ARE REFERENCED TO MLLW, TIDAL EPOCH 1983-2001 AS REPORTED BY THE NATIONAL OCEANIC AND ATMOSPHERIC ADMINISTRATION (NOAA). NOAA'S VDATUM MODEL WAS USED AND CALIBRATED TO THE PUBLISHED MLLW HEIGHTS OF THE BENCHMARKS ASSOCIATED WITH THE TIDE GAGE SITES SPECIFIED BELOW:
MULTIPLE NOAA TIDAL STATIONS AS USED BY GEOMATICS SECTION WITHIN VDATUM.
VERTICAL MEASUREMENTS WERE MADE USING A ROSS MODEL 835C SMART SOUNDING WITH A 28/200 KHZ SINGLE-BEAM TRANSDUCER. ALL SOUNDINGS SHOWN ARE IN HIGH FREQUENCY.
VESSEL DATE OF SURVEY CUT
SB-36 14, 17 NOV 2016 APPROACH, CUTS 1 THROUGH 9
- AIDS TO NAVIGATION WERE LOCATED DURING THIS SURVEY.
- THE INFORMATION DEPICTED ON THIS MAP REPRESENTS THE RESULTS OF SURVEYS MADE ON THE DATES INDICATED ABOVE AND CAN ONLY BE CONSIDERED AS INDICATING THE GENERAL CONDITIONS AT THAT TIME. THIS CHART IS SOLELY FOR THE DISTRIBUTION OF AVAILABLE DEPTHS AT THE TIME OF THE SURVEY AND IS NOT TO BE USED FOR NAVIGATION.
- SURVEY ACCURACY PERFORMANCE STANDARDS, QUALITY CONTROL, AND QUALITY ASSURANCE REQUIREMENTS WERE FOLLOWED DURING THIS SURVEY IN ACCORDANCE WITH USACE EM 1110-2-1003, HYDROGRAPHIC SURVEYING, 30 NOV 13.

LEGEND	
	MONUMENT
	LIGHTED BEACON
	GREEN DAYBEACON
	RED DAYBEACON
	RED LIGHTED BUOY
	GREEN LIGHTED BUOY
	CAN BUOY
	NUN BUOY
	TIDE STAFF
	PROJECT DEPTH

US Army Corps of Engineers
Jacksonville District
SAFETY ON THIS JOB
DEPENDS ON YOU

DEPARTMENT OF THE ARMY JACKSONVILLE DISTRICT, CORPS OF ENGINEERS JACKSONVILLE, FLORIDA	Cedar by: GMR Designed by: WRM DWN by: WRM Rev. No.: WRM Date: NOV 2016 Reference: 16-196-4-001.DGN File name: 16-196-4-001.DGN
POST-HURRICANE HERMINE EXAM SURVEY FY16 4-FOOT PROJECT INDEX, LOCATION AND VICINITY MAP	
Scale: AS SHOWN Drawing no. 1	
SHEET 01 OF 06	



Checked by:	GHR
Designed by:	WRM
DRAWN BY:	WRM
Rev. No.	NOV 2016
Checked:	NOV 2016

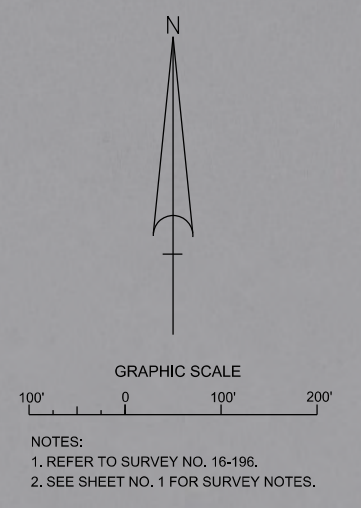
16-186A-V-CONALDGN
16-186A-V-VALDGN
16-186A-SOUL_CLDGN
16-186A-SOUL_CVDGN
16-186A-SOUL_CADGN
20200808-APPCANALDGN
16-186C-BS-BRIDLGN
16-186A-H-ROLDGN

**POST-HURRICANE HERMINE EXAM SURVEY FY16
4-FOOT PROJECT**

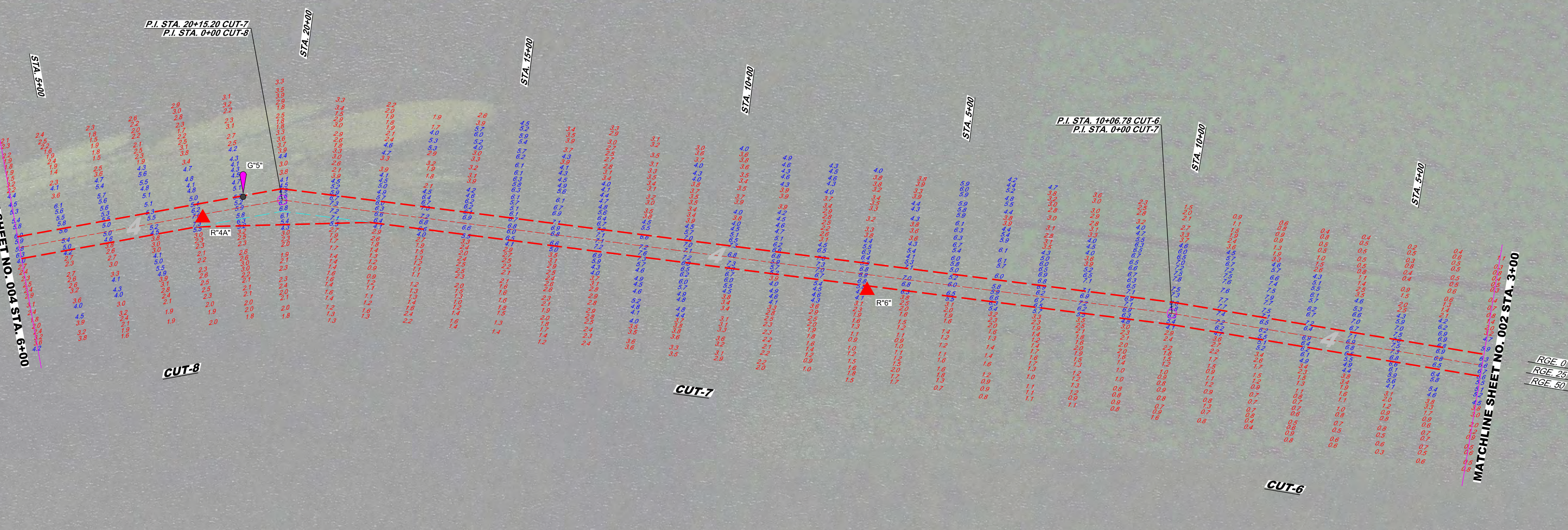
STA. 0+00 CUT-1 THRU STA. 3+00 CUT-6
PLAN

Scale: AS SHOWN
Drawing no. **2**
SHEET 02 OF 06

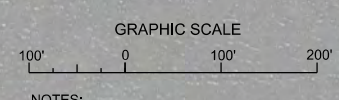
AIDS TO NAVIGATION	PLANE COORDINATES		LATITUDE	LONGITUDE
	X	Y		
13 (11/16)	2253762	297382	29484245	83360176
DBN10 (11/16)	2254310	297389	29485244	83364984
11 (11/16)	2254890	297433	29485307	83364892
DBN27 (11/16)	2254869	297437	29485211	83362804
DBN13 (11/16)	2255319	297426	29485098	83364410
LT BUOY 54 (11/16)	2255397	297425	29484998	83364320
DBN12 (11/16)	2255488	297472	29485044	83362283
18 (11/16)	2256037	297445	29485310	83363590
DBN17 (11/16)	2255999	297544	29485408	83363122
19 (11/16)	2256437	298396	29490248	83363122
DBN18 (11/16)	2256317	298083	29485938	83362266
DBN20 (11/16)	2256538	298347	29490198	83363013



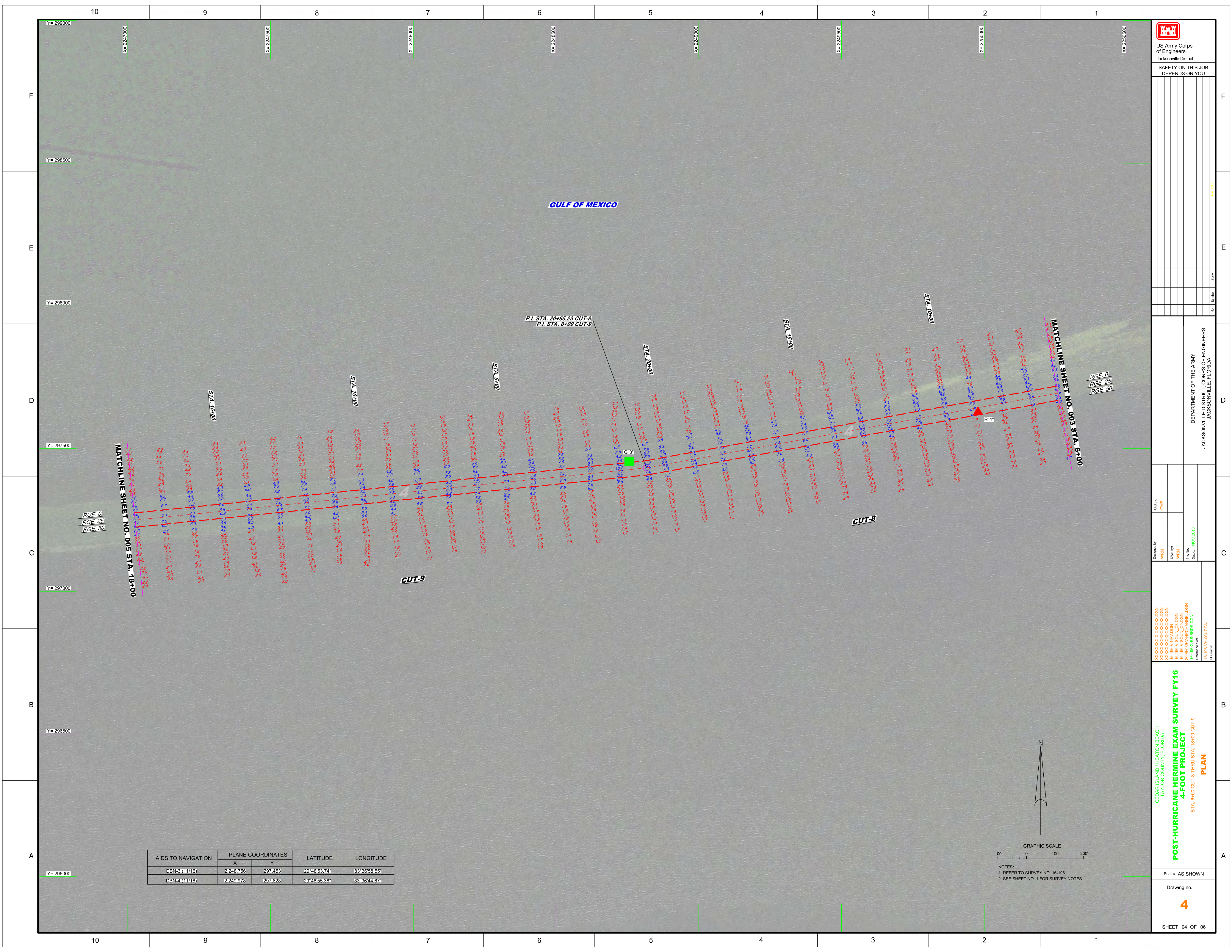
GULF OF MEXICO



AIDS TO NAVIGATION	PLANE COORDINATES		LATITUDE	LONGITUDE
	X	Y		
DBN-4A (11/16)	2250.669	297.760	29°48'56.64"	83°36'36.81"
LT-5(11/16)	2250.760	297.808	29°48'57.10"	83°36'35.77"
DBN-8 (11/16)	2252.162	297.598	29°48'54.91"	83°36'19.87"



NOTES:
1. REFER TO SURVEY NO. 16-196.
2. SEE SHEET NO. 1 FOR SURVEY NOTES.

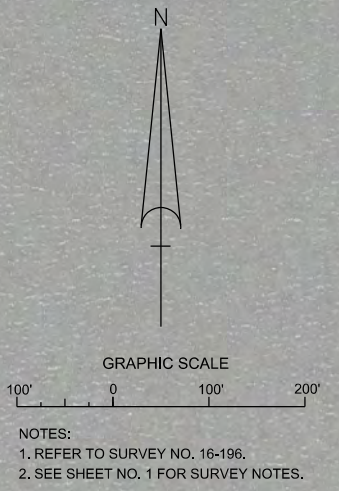


US Army Corps of Engineers
 Jacksonville District
 SAFETY ON THIS JOB
 DEPENDS ON YOU

Department of the Army
 Jacksonville District, Corps of Engineers
 Jacksonville, Florida

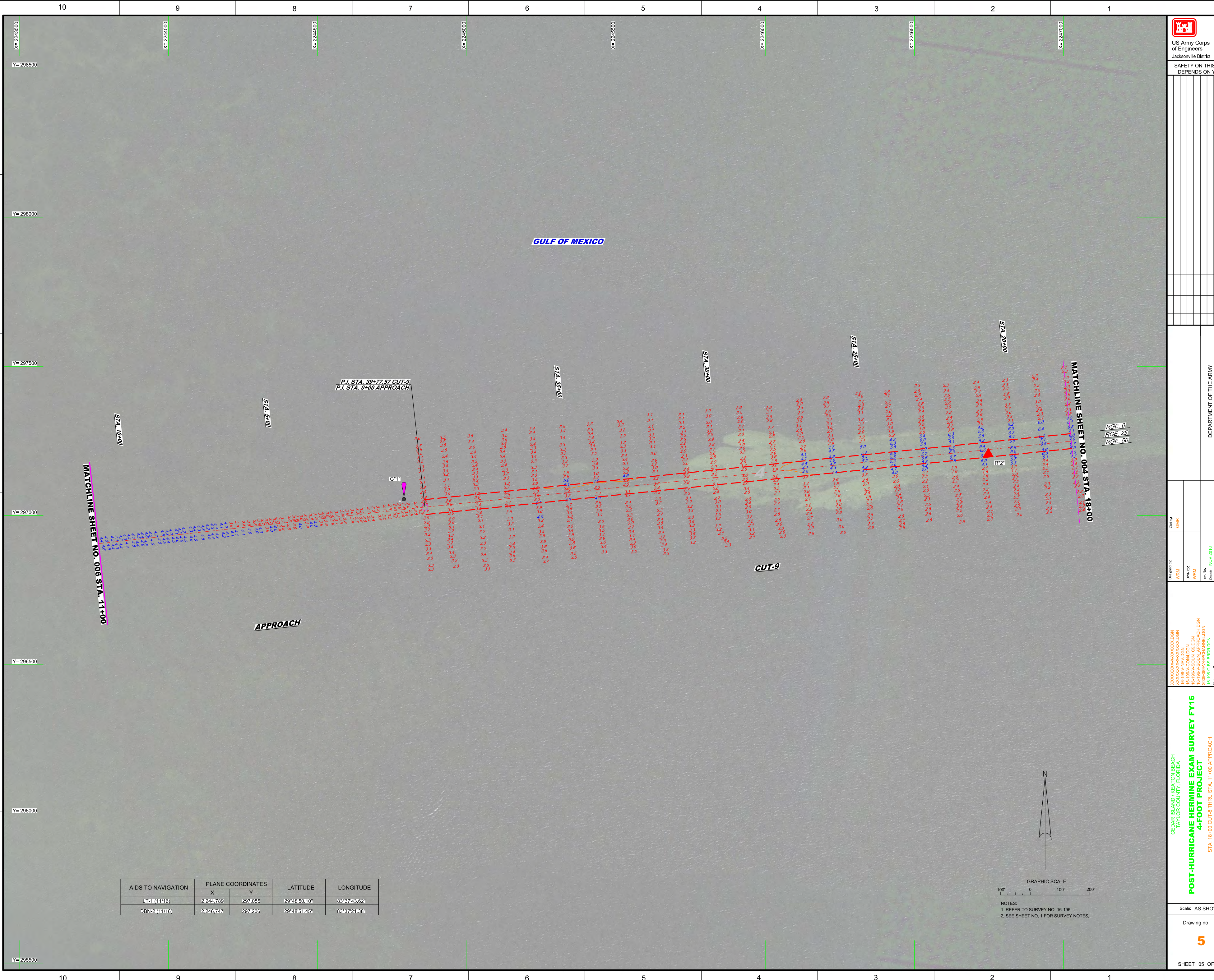
Cedar Island / Keaton Beach
 Taylor County, Florida
POST-HURRICANE HERMINE EXAM SURVEY FY16
4-FOOT PROJECT
 STA. 6+00 CUT-8 THRU STA. 18+00 CUT-9
PLAN

AIDS TO NAVIGATION	PLANE COORDINATES		LATITUDE	LONGITUDE
	X	Y		
DBN3 (11116)	2248.756	297.453	29°48'53.74"	83°36'58.55"
DBN4 (11116)	2249.976	297.628	29°48'55.38"	83°36'24.67"

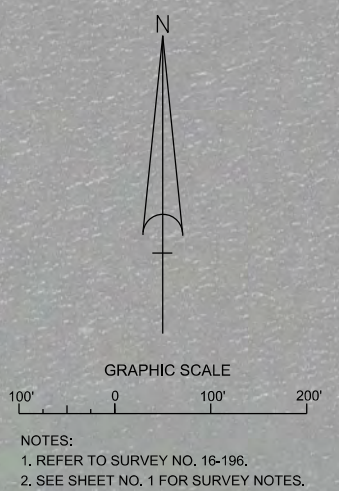



NOTES:
 1. REFER TO SURVEY NO. 16-196.
 2. SEE SHEET NO. 1 FOR SURVEY NOTES.

Scale: AS SHOWN
 Drawing no.
4
 SHEET 04 OF 06



AIDS TO NAVIGATION	PLANE COORDINATES		LATITUDE	LONGITUDE
	X	Y		
1116	2244789	297055	29°48'50.10"	83°37'43.62"
DBN-2 (1116)	2246747	297206	29°48'51.45"	83°37'21.88"




 US Army Corps of Engineers
 Jacksonville District
 SAFETY ON THIS JOB
 DEPENDS ON YOU

DESIGNED BY: WRM DRAWN BY: WRM CHECKED BY: WRM DATE: NOV 2016	CLIENT: GMR PROJECT: POST-HURRICANE HERMINE EXAM SURVEY FY16 DRAWING: STA. 18+00 CUT-8 THRU STA. 11+00 APPROACH SCALE: AS SHOWN SHEET 05 OF 06
--	--

DEPARTMENT OF THE ARMY
 JACKSONVILLE DISTRICT, CORPS OF ENGINEERS
 JACKSONVILLE, FLORIDA

