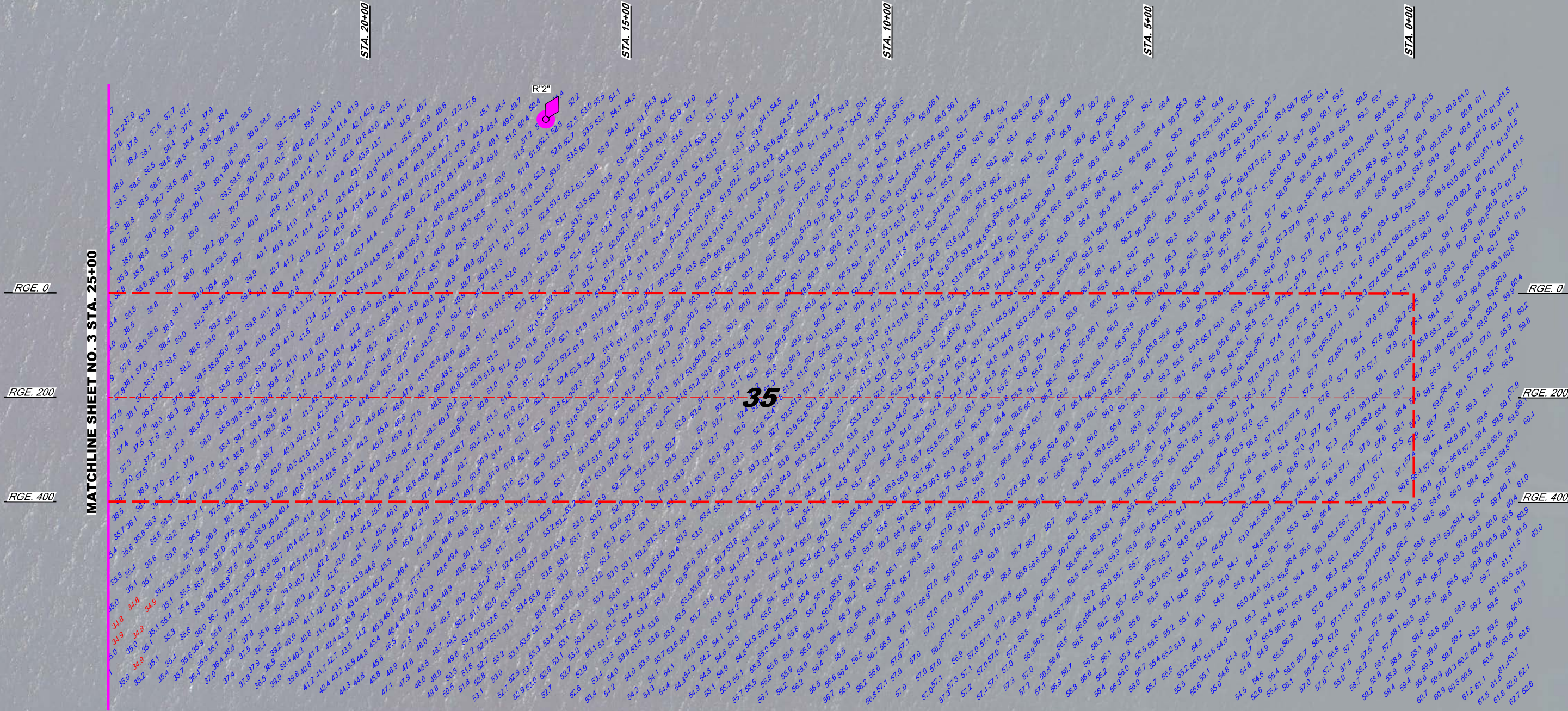
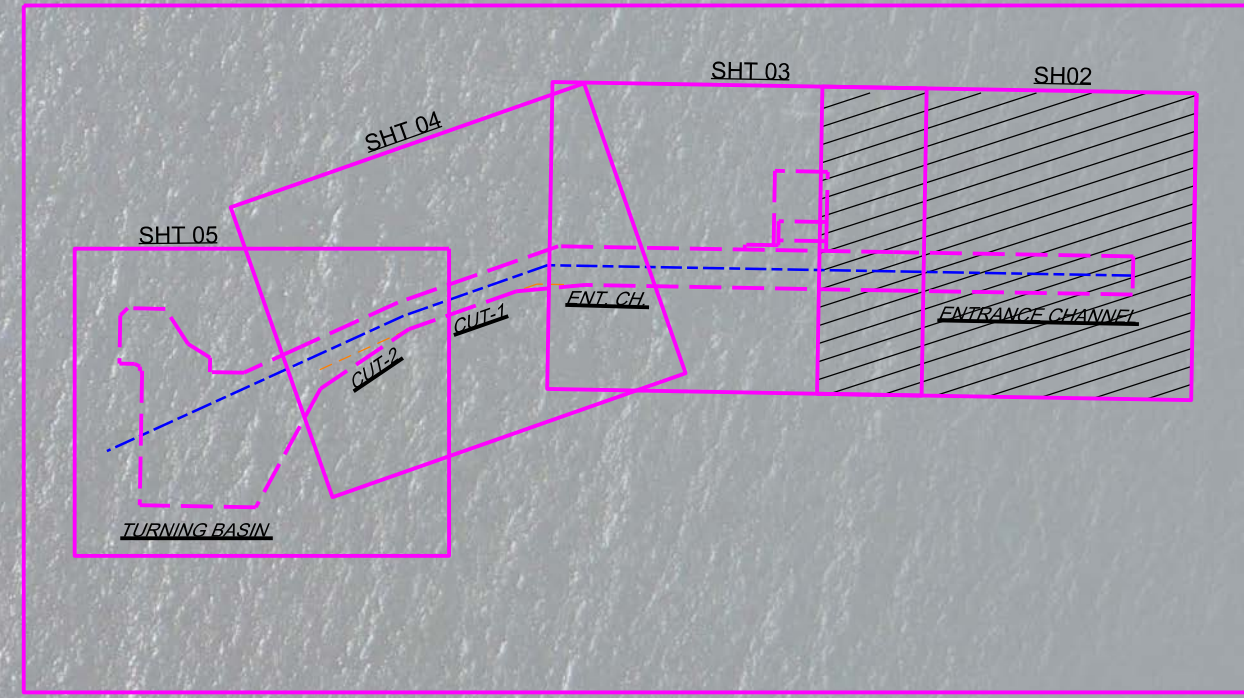
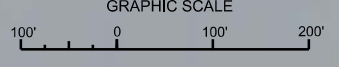





AIDS TO NAVIGATION	PLANE COORDINATES		LATITUDE	LONGITUDE
	X	Y		
LT. BUOY-2 (0716)	974.713	888.125	26°46'25.24"	80°01'25.30"



**ENTRANCE CHANNEL**



NOTES:  
1. REFER TO SURVEY NO. 16-166,  
2. SEE SHEET NO. 1 FOR SURVEY NOTES.



US Army Corps  
of Engineers  
Jacksonville District

SAFETY ON THIS JOB  
DEPENDS ON YOU

---

DEPARTMENT OF THE ARMY  
JACKSONVILLE DISTRICT, CORPS OF ENGINEERS  
JACKSONVILLE, FLORIDA

---

16-166-V-SOUN\_E.CC.DGN  
16-166-G-B-HARBOR-CANAL-CDN  
16-166-G-B-S-BIRDSON  
Reference: 16-166-V-H-SH02.DGN

---

**40 EXAMINATION SURVEY FY16**  
**25, 33, 35, 37 & 39-FOOT PROJECT**

---

PLAN  
STA. 0+00 THRU STA. 25+00 ENTRANCE CHANNEL

---

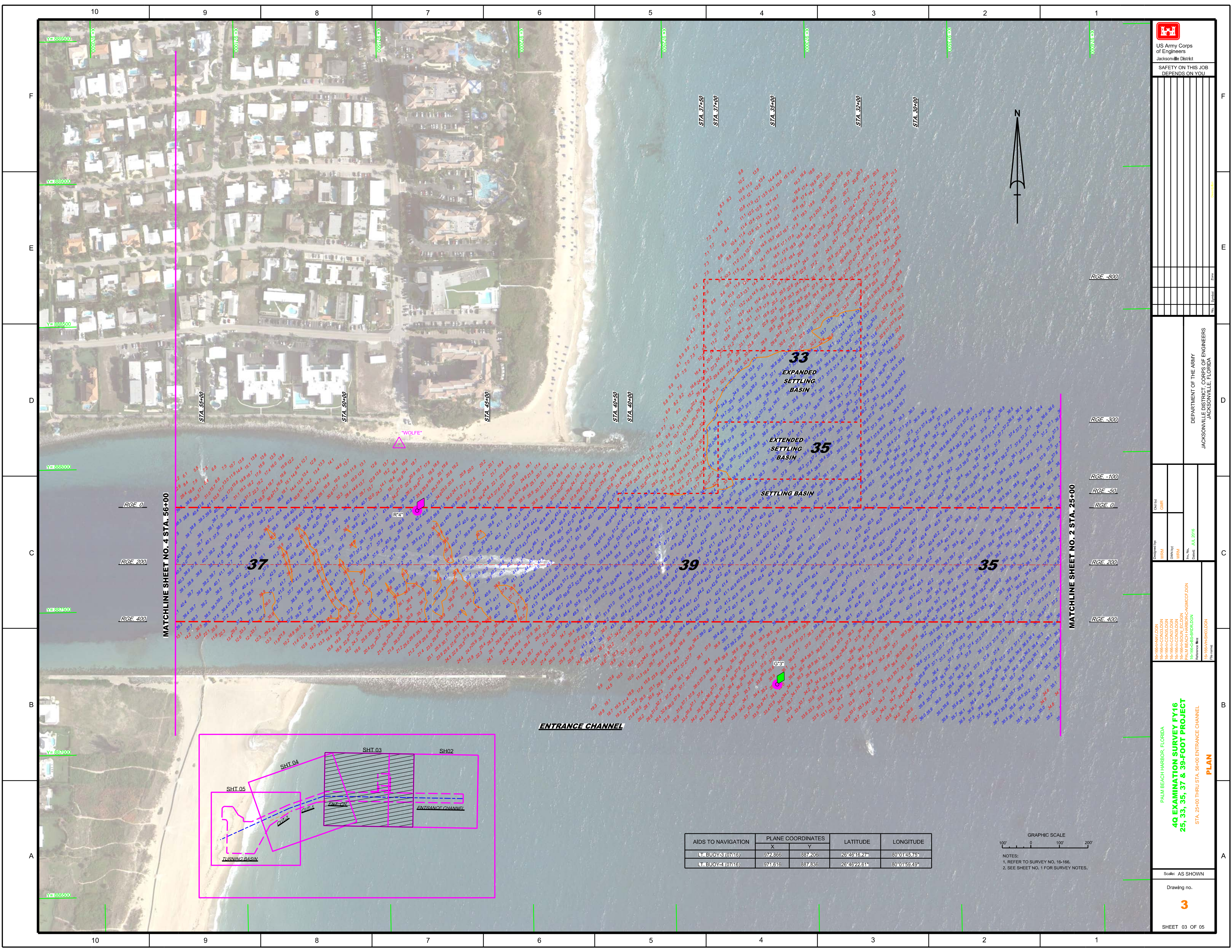
Scale: AS SHOWN

---

Drawing no.  
**2**

---

SHEET 02 OF 05



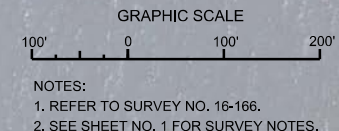
US Army Corps of Engineers
   
 Jacksonville District
   
 SAFETY ON THIS JOB
   
 DEPENDS ON YOU

DEPARTMENT OF THE ARMY
   
 JACKSONVILLE DISTRICT, CORPS OF ENGINEERS
   
 JACKSONVILLE, FLORIDA

**40 EXAMINATION SURVEY FY16**
  
**25, 33, 35, 37 & 39-FOOT PROJECT**
  
 STA. 25+00 THRU STA. 36+00 ENTRANCE CHANNEL
   
**PLAN**

Scale: AS SHOWN
   
 Drawing no.
   
**3**
  
 SHEET 03 OF 05

AIDS TO NAVIGATION	PLANE COORDINATES		LATITUDE	LONGITUDE
	X	Y		
LT. BUOY-3 (07/16)	972,866	887,206	26°46'16.27"	80°01'45.75"
LT. BUOY-4 (07/16)	971,616	887,836	26°46'22.61"	80°01'59.49"



10 9 8 7 6 5 4 3 2 1

F E D C B A

**US Army Corps of Engineers**  
**Jacksonville District**  
 SAFETY ON THIS JOB  
 DEPENDS ON YOU

---

DEPARTMENT OF THE ARMY  
 JACKSONVILLE DISTRICT, CORPS OF ENGINEERS  
 JACKSONVILLE, FLORIDA

Drawn by: GHR  
 Checked by: GHR  
 Date: JUL 2016

16-166-00-000  
 16-166-00-100  
 16-166-00-200  
 16-166-00-300  
 16-166-00-400  
 16-166-00-500  
 16-166-00-600  
 16-166-00-700  
 16-166-00-800  
 16-166-00-900  
 16-166-00-1000

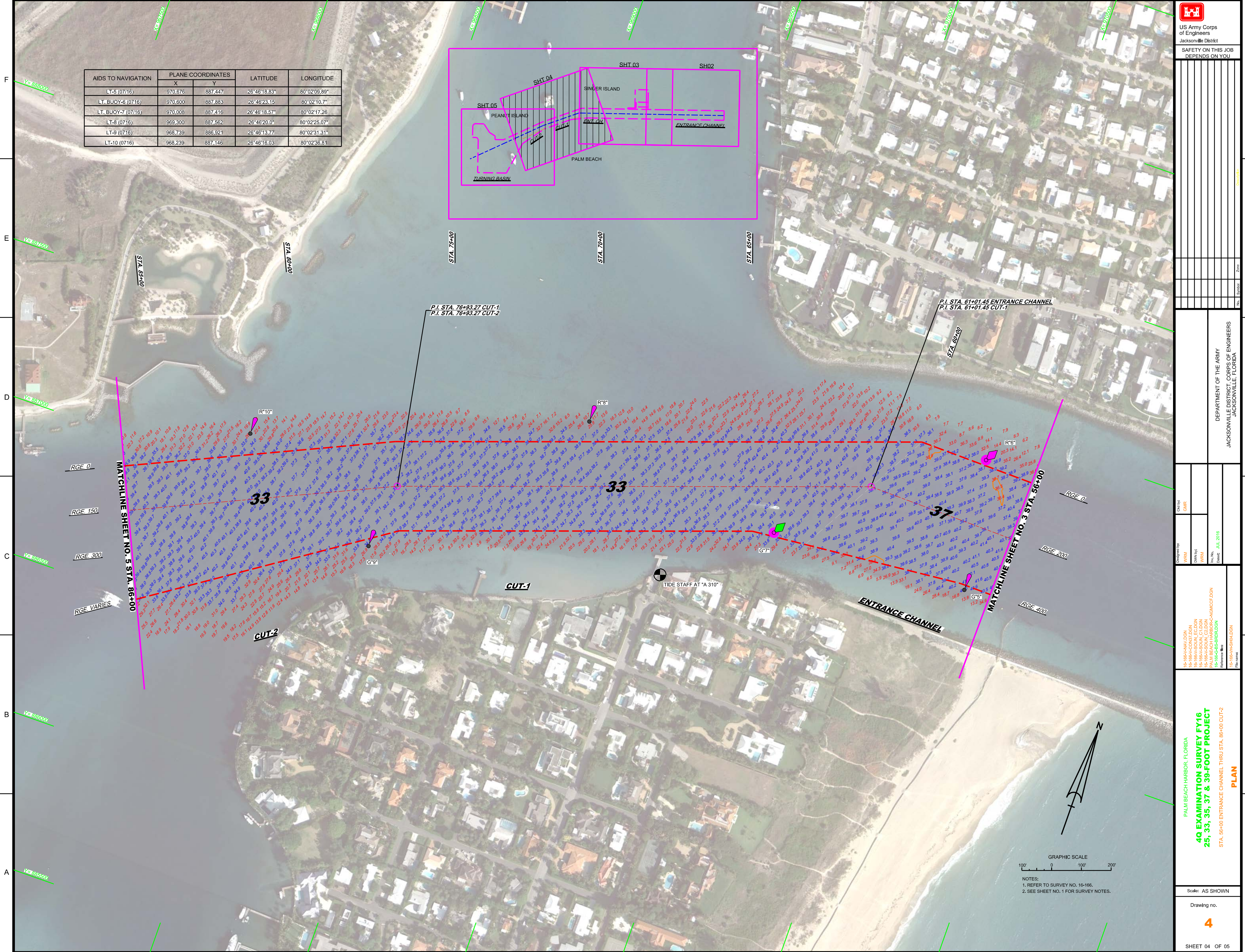
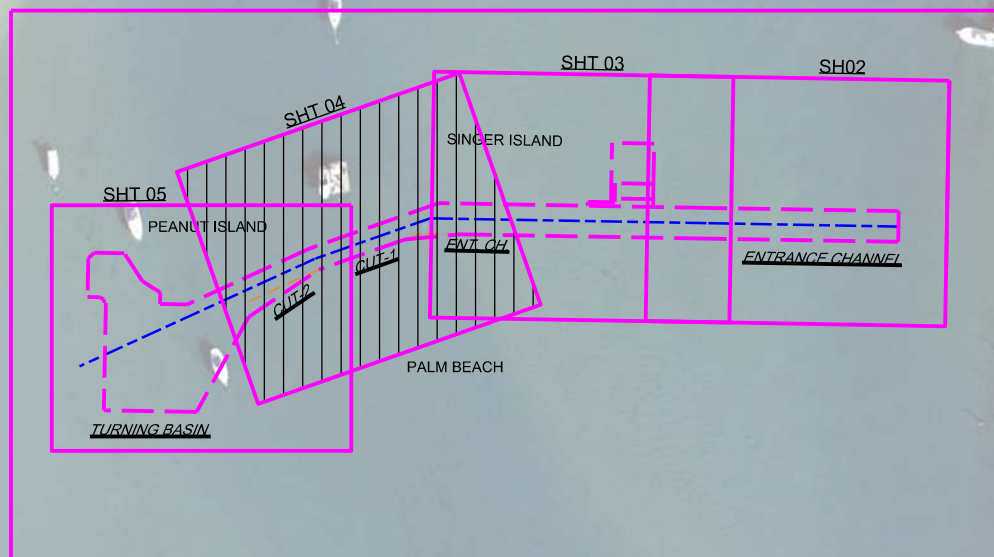
PALM BEACH HARBOR CANAL PROJECT  
 STA. 56+00 ENTRANCE CHANNEL THRU STA. 86+00 CUT-2  
 PLAN

Scale: AS SHOWN

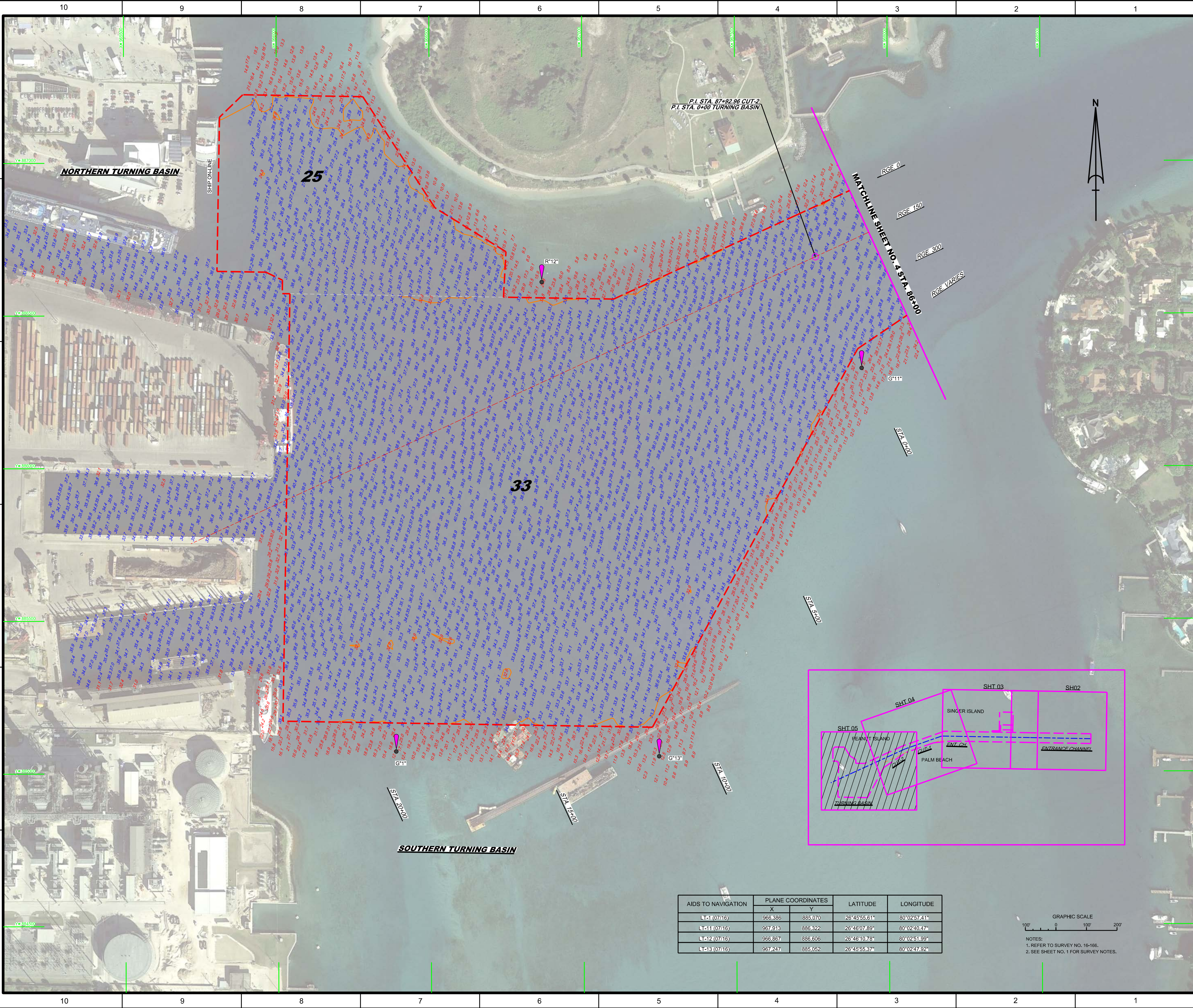
Drawing no. **4**

SHEET 04 OF 05

AIDS TO NAVIGATION	PLANE COORDINATES		LATITUDE	LONGITUDE
	X	Y		
LT-5 (0716)	970.676	887.447	26°46'18.83"	80°02'09.89"
LT BUOY-6 (0716)	970.600	887.883	26°46'23.35"	80°02'10.7"
LT BUOY-7 (0716)	970.008	887.416	26°46'18.57"	80°02'17.26"
LT-8 (0716)	968.300	887.562	26°46'20.0"	80°02'25.07"
LT-9 (0716)	968.739	886.921	26°46'13.77"	80°02'31.31"
LT-10 (0716)	968.239	887.146	26°46'16.03"	80°02'36.81"



GRAPHIC SCALE  
 100' 0 100' 200'  
 NOTES:  
 1. REFER TO SURVEY NO. 16-166.  
 2. SEE SHEET NO. 1 FOR SURVEY NOTES.



PI STA. 87+92.96 CUT-2  
PI STA. 0+00 TURNING BASIN

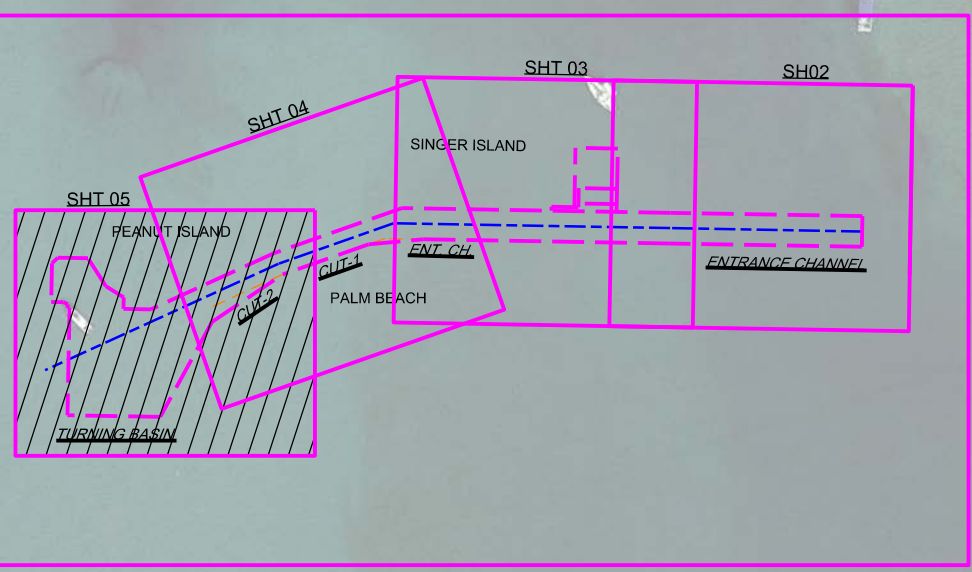
NORTHERN TURNING BASIN

25

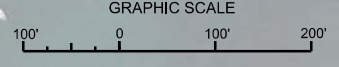
33

SOUTHERN TURNING BASIN

RGE 0  
RGE 150  
RGE 300  
RGE VARIES



AIDS TO NAVIGATION	PLANE COORDINATES		LATITUDE	LONGITUDE
	X	Y		
L-1 (07/16)	966.386	885.070	26°45'55.61"	80°02'57.41"
L-11 (07/16)	967.913	886.322	26°46'07.89"	80°02'40.47"
L-12 (07/16)	966.867	886.606	26°46'10.78"	80°02'51.99"
L-13 (07/16)	967.247	885.052	26°45'55.37"	80°02'47.92"



NOTES:  
1. REFER TO SURVEY NO. 16-166.  
2. SEE SHEET NO. 1 FOR SURVEY NOTES.

**US Army Corps of Engineers**  
Jacksonville District  
SAFETY ON THIS JOB  
DEPENDS ON YOU

DEPARTMENT OF THE ARMY  
JACKSONVILLE DISTRICT, CORPS OF ENGINEERS  
JACKSONVILLE, FLORIDA

---

Project: PALM BEACH HARBOR, FLORIDA  
Exam: 4Q EXAMINATION SURVEY FY16  
Basins: 25, 33, 35, 37 & 39-FOOT PROJECT  
Station: STA. 86+00 CUT-2 THRU TURNING BASIN  
Plan

Scale: AS SHOWN  
Drawing No. **5**  
Sheet 05 OF 05