

# TAMPA HARBOR ZONE 7 UPPER HILLSBOROUGH BAY HILLSBOROUGH COUNTY, FLORIDA EXAMINATION SURVEY FY16 12, 34 AND 43-FOOT PROJECT

### SURVEY NOTES

- REFER TO SURVEY NO. 16-161.
  - DEPTHS DEPICTED BY THIS SURVEY ARE REFERENCED TO MEAN LOWER LOW WATER (MLLW), TIDAL EPOCH 1983-2001 AS REPORTED BY THE NATIONAL OCEANIC AND ATMOSPHERIC ADMINISTRATION (NOAA). NOAA'S VDATUM MODEL WAS USED AND CALIBRATED TO THE PUBLISHED MLLW HEIGHTS OF THE BENCH MARKS ASSOCIATED WITH THE TIDE GAGE SITE SPECIFIED BELOW:  
  
NOAA TIDAL STATION 872-6657, DAVIS ISLAND, HILLSBOROUGH BAY FOR UPPER TAMPA CHANNELS
  - TIDAL REDUCTIONS WERE OBTAINED UTILIZING A REAL-TIME KINEMATIC (RTK) GPS AND REFERENCED TO MLLW UTILIZING A HYPACK KINEMATIC TIDE DATUM (KTD) MODEL NAMED "SPC-FL-WEST-2010-12-07.KTD"
  - ALL ELEVATIONS ARE BELOW THE CHART DATUM UNLESS PRECEDED BY A (+) SIGN.
  - PLANE COORDINATES ARE BASED ON THE TRANSVERSE MERCATOR PROJECTION FOR THE WEST ZONE OF FLORIDA AND REFERENCED TO NORTH AMERICAN DATUM OF 1983 (NAD83).
  - ALL STATIONING REFERS TO THE CENTERLINE OF THE CHANNEL.  
  
REFERENCE BASE LOCATED AT "Q-261" (NGS PID: AG6024)  
TIDE STAFF LOCATED FROM TIDAL BENCHMARK "Q-261" (NGS PID: AG6024)
  - THIS SURVEY WAS PERFORMED USING REAL-TIME KINEMATIC (RTK) GPS POSITIONING WITH THE FOLLOWING REFERENCE BASE LOCATIONS:  
  
LOWER & UPPER SPARKMAN, YBOR CH, SEDDON CH, PORT SUTTON CH, PORT SUTTON T.B., PORT SUTTON TERMINAL CH, EAST BAY CH, EAST BAY EXTENSIONS 1 & 2
  - VERTICAL MEASUREMENTS WERE MADE USING A ROSS MODEL 835 SMARTSOUNDER WITH DUAL-FREQUENCY (28/200 KHZ) SINGLE-BEAM TRANSDUCER. SOUNDINGS SHOWN ARE IN LOW FREQUENCY.
- | VESSEL | DATE OF SURVEY | CUT                          |
|--------|----------------|------------------------------|
| SB-44  | 11 AUG 2016    | SEDDON CHANNEL               |
| SB-44  | 12 AUG 2016    | UPPER SPARKMAN CHANNEL       |
| SB-44  | 16 AUG 2016    | LOWER SPARKMAN CHANNEL       |
| SB-44  | 16-17 AUG 2016 | YBOR CHANNEL                 |
| SB-44  | 17 AUG 2016    | PORT SUTTON CHANNEL          |
| SB-44  | 17 AUG 2016    | PORT SUTTON TURNING BASIN    |
| SB-44  | 18 AUG 2016    | EAST BAY CHANNELS            |
| SB-44  | 19 AUG 2016    | PORT SUTTON TERMINAL CHANNEL |
- AIDS TO NAVIGATION WERE LOCATED DURING THIS SURVEY.
  - THE INFORMATION DEPICTED ON THIS MAP REPRESENTS THE RESULTS OF SURVEYS MADE ON THE DATES INDICATED ABOVE AND CAN ONLY BE CONSIDERED AS INDICATING THE GENERAL CONDITIONS AT THAT TIME. THIS CHART IS SOLELY FOR THE DISTRIBUTION OF AVAILABLE DEPTHS AT THE TIME OF THE SURVEY.
  - SURVEY ACCURACY PERFORMANCE STANDARDS, QUALITY CONTROL, AND QUALITY ASSURANCE REQUIREMENTS WERE FOLLOWED DURING THIS SURVEY IN ACCORDANCE WITH USACE EM 1110-2-1003, HYDROGRAPHIC SURVEYING, 30 NOV 13.
  - THIS MAP SET IS AN UNOFFICIAL MAP SET. OFFICIAL MAPS ARE NOW DISTRIBUTED THROUGH eHydro AND CAN BE ACCESSED BY GOING TO THE FOLLOWING LINK: [HTTP://NAVIGATION.USACE.ARMY.MIL/SURVEY/HYDRO](http://navigation.usace.army.mil/survey/hydro)

SURVEY ZONE	CUTS
4	CUT-F, CUT-G, GADSDEN POINT CUT
5	CUT-J, CUT-J2, CUT-K
6	CUT-A (HB), CUT-C (HB), CUT-D (HB)
7	LOWER & UPPER SPARKMAN, YBOR CH, SEDDON CH, PORT SUTTON CH, PORT SUTTON T.B., PORT SUTTON TERMINAL CH, EAST BAY CH, EAST BAY EXTENSIONS 1 & 2

LEGEND	
	MONUMENT
	LIGHTED BUOY
	GREEN DAYBEACON
	RED DAYBEACON
	RED LIGHTED BUOY
	GREEN LIGHTED BUOY
	CAN BUOY
	NUN BUOY
	TIDE STAFF
	PROJECT DEPTH

US Army Corps of Engineers  
Jacksonville District

SAFETY ON THIS JOB  
DEPENDS ON YOU

---

DEPARTMENT OF THE ARMY  
JACKSONVILLE DISTRICT, CORPS OF ENGINEERS  
JACKSONVILLE, FLORIDA

---

Check by: GHR  
Designed by: WRM  
Drawn by: WRM  
File No.: TAMPA HARBOR-201602.DGN  
Reference File: 16-16 (HYD)\_Z7.DGN  
Date: AUG 2016

---

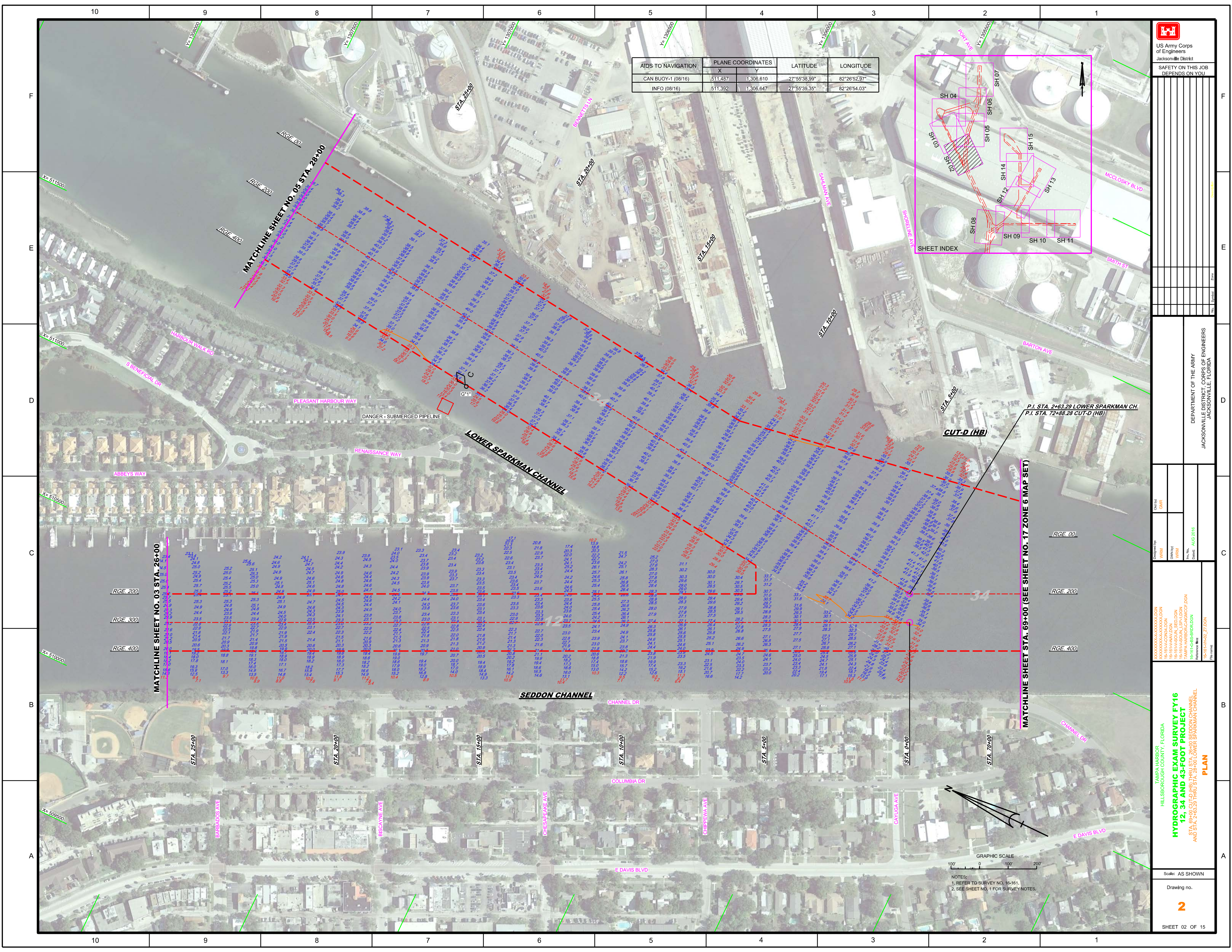
TAMPA HARBOR  
HILLSBOROUGH COUNTY, FLORIDA  
**HYDROGRAPHIC EXAMINATION SURVEY FY16  
12, 34 AND 43-FOOT PROJECT**  
INDEX, LOCATION AND VICINITY  
MAP

---

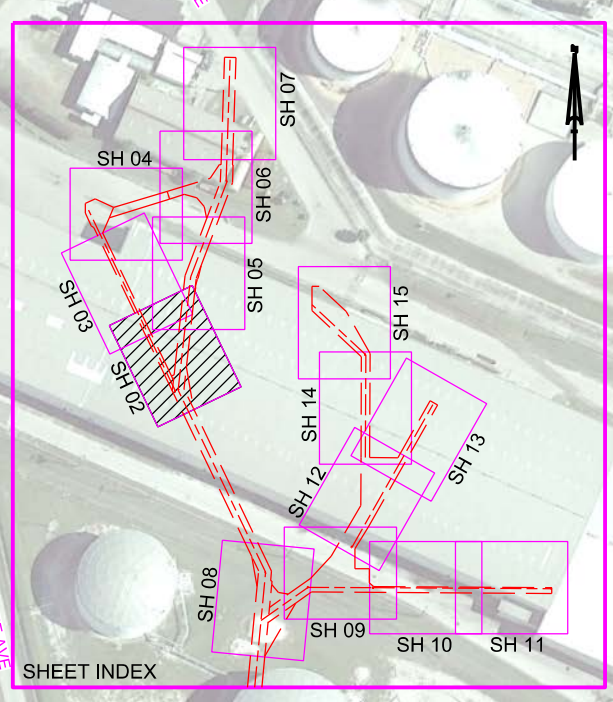
Scale: AS SHOWN


Drawing no.  
**1**

SHEET 01 OF 15



AIDS TO NAVIGATION	PLANE COORDINATES		LATITUDE	LONGITUDE
	X	Y		
CAN BUOY-1 (08/16)	511,437	1,306,610	27°55'38.99"	82°26'52.97"
INFO (08/16)	511,392	1,306,647	27°55'39.35"	82°26'54.03"





US Army Corps of Engineers  
Jacksonville District  
SAFETY ON THIS JOB  
DEPENDS ON YOU

---

DEPARTMENT OF THE ARMY  
JACKSONVILLE DISTRICT, CORPS OF ENGINEERS  
JACKSONVILLE, FLORIDA

Checked By	Checked
WRM	WRM
WRM	WRM
WRM	WRM

Date: AUG 2018

TAMP A HARBOR  
 HILLSBOROUGH COUNTY, FLORIDA  
**HYDROGRAPHIC EXAM SURVEY FY16**  
**12, 34 AND 43-FOOT PROJECT**  
 STA. 69+00 CUT-D (HB) THRU STA. 20+00 SEDDON CHANNEL  
 AND STA. 2+63.29 THRU STA. 20+00 LOWER SPARKMAN CHANNEL  
**PLAN**

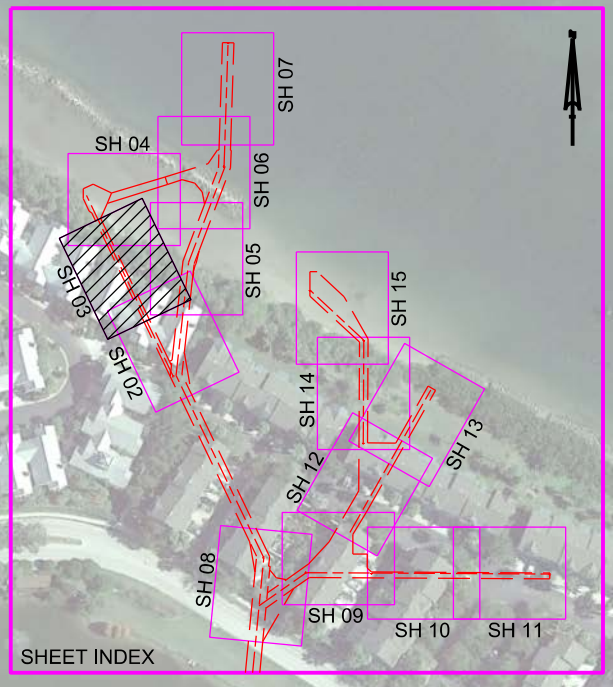
Scale: AS SHOWN

Drawing No. **2**

SHEET 02 OF 15

NOTES:  
1. REFER TO SURVEY NO. 16-161.  
2. SEE SHEET NO. 1 FOR SURVEY NOTES.

AIDS TO NAVIGATION	PLANE COORDINATES		LATITUDE	LONGITUDE
	X	Y		
SIGN (08/16)	509.931	1,308.457	27°55'57.22"	82°27'10.39"
SIGN (08/16)	509.564	1,308.203	27°55'54.70"	82°27'14.48"
SIGN (08/16)	509.073	1,309.241	27°56'04.95"	82°27'20.00"
SIGN (08/16)	510.045	1,307.216	27°55'44.94"	82°27'09.07"
SIGN (08/16)	510.432	1,307.407	27°55'46.84"	82°27'04.77"



MATCHLINE SHEET NO. 04 STA. 56+00

MATCHLINE SHEET NO. 02 STA. 26+00



US Army Corps of Engineers  
Jacksonville District  
SAFETY ON THIS JOB  
DEPENDS ON YOU

---

DEPARTMENT OF THE ARMY  
JACKSONVILLE DISTRICT, CORPS OF ENGINEERS  
JACKSONVILLE, FLORIDA

---

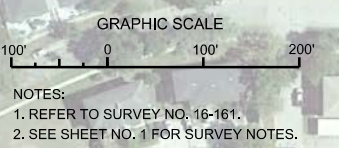
Designed by: WRM  
Checked by: GHR  
Drawn by: WRM  
Reviewed by: WRM  
Date: AUG 2018  
Project: 16-16-HR-03-27.DGN

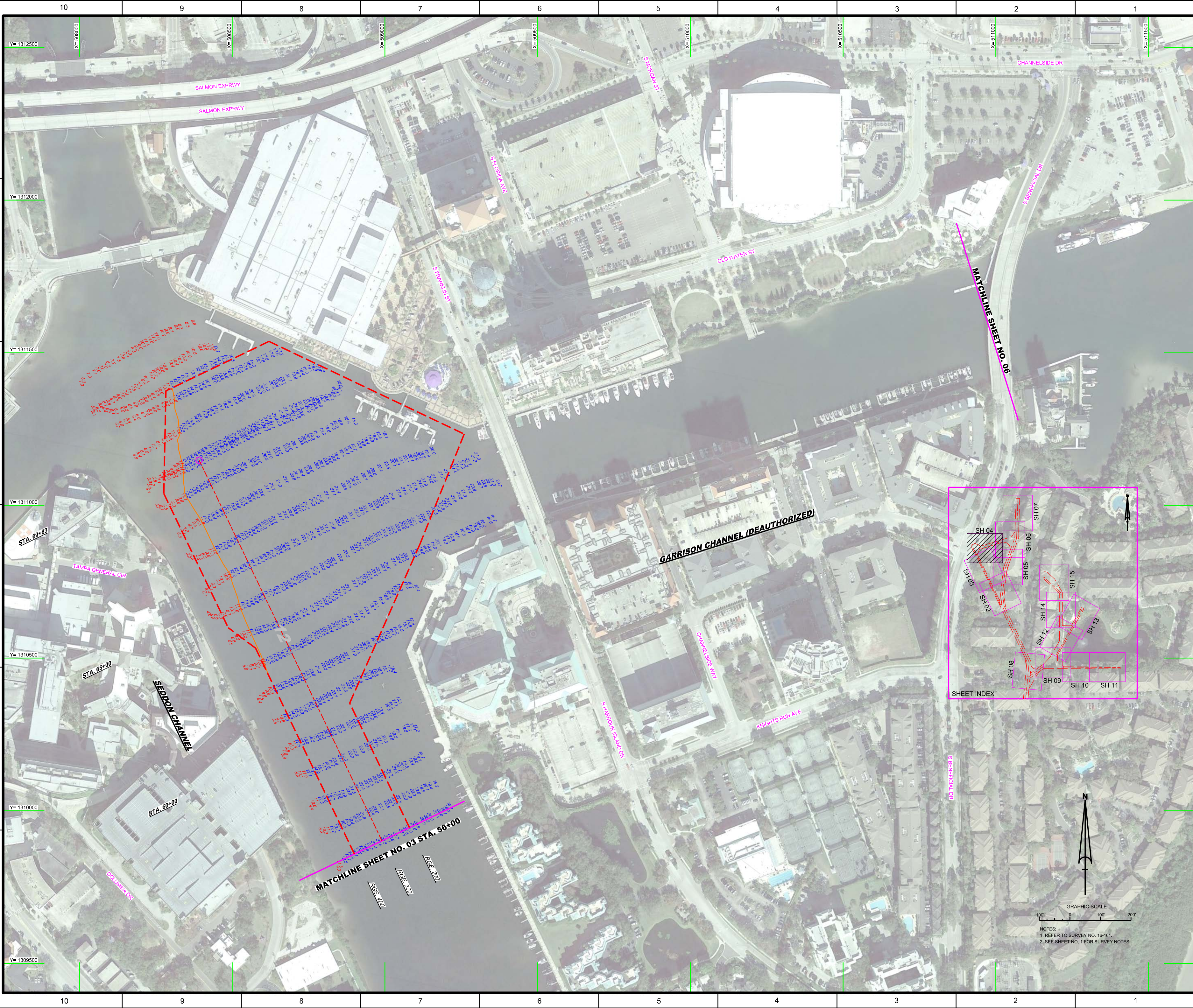
---

TAMPA HARBOR  
HILLSBOROUGH COUNTY, FLORIDA  
HYDROGRAPHIC EXAM SURVEY FY16  
12, 34 AND 43-FOOT PROJECT  
STA. 26+00 THRU STA. 56+00 SEDDON CHANNEL  
PLAN

---

Scale: AS SHOWN  
Drawing no.  
3  
SHEET 03 OF 15





US Army Corps of Engineers  
Jacksonville District  
SAFETY ON THIS JOB  
DEPENDS ON YOU

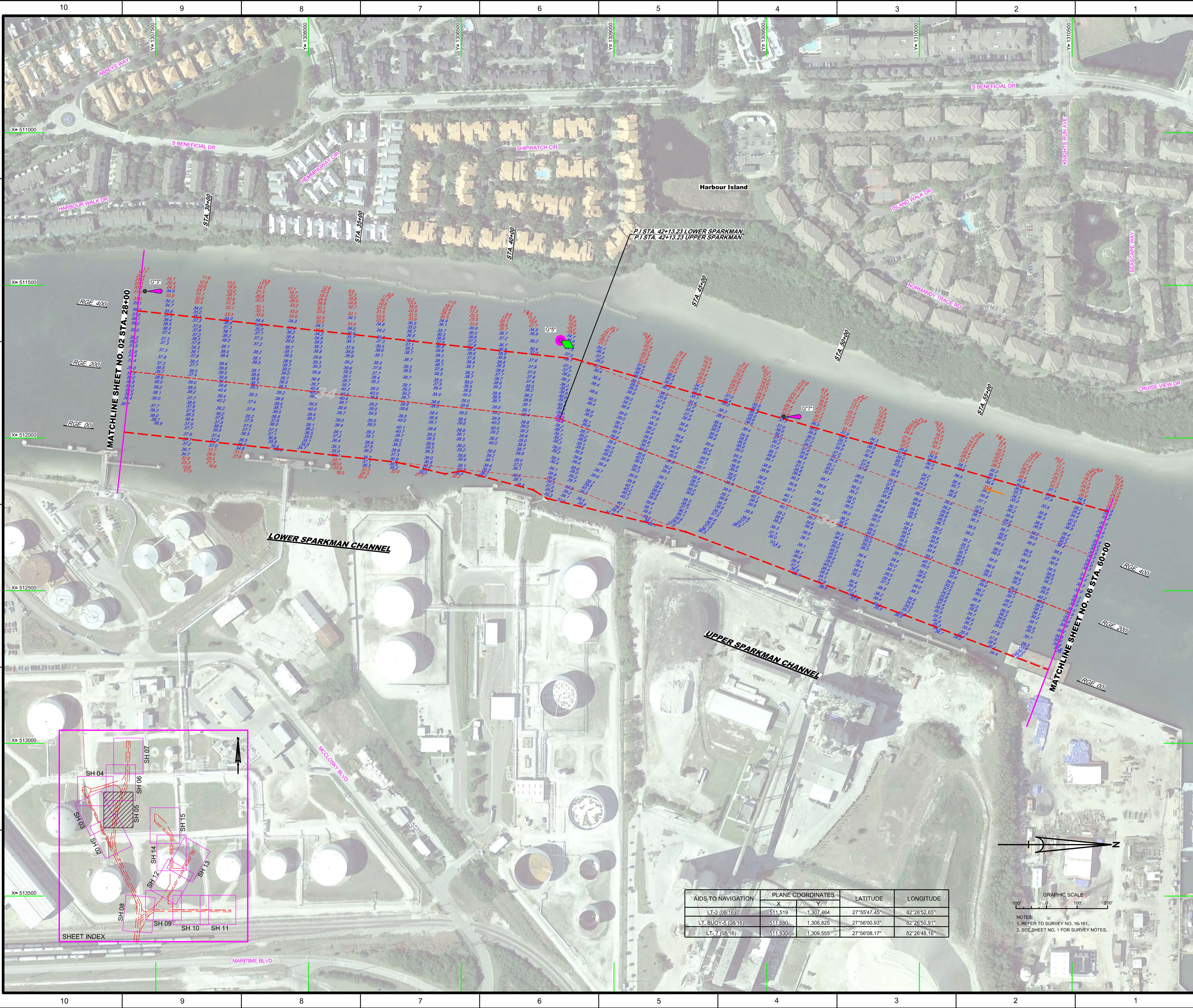
DEPARTMENT OF THE ARMY  
JACKSONVILLE DISTRICT, CORPS OF ENGINEERS  
JACKSONVILLE, FLORIDA

Designed by: WRM  
Checked by: GHR  
Drawn by: WRM  
Reviewed by: WRM  
Date: AUG 2016  
Reference files: 16-16-FA-03-SD-01.DGN, 16-16-FA-03-SD-02.DGN, 16-16-FA-03-SD-03.DGN, 16-16-FA-03-SD-04.DGN, 16-16-FA-03-SD-05.DGN, 16-16-FA-03-SD-06.DGN, 16-16-FA-03-SD-07.DGN, 16-16-FA-03-SD-08.DGN, 16-16-FA-03-SD-09.DGN, 16-16-FA-03-SD-10.DGN, 16-16-FA-03-SD-11.DGN, 16-16-FA-03-SD-12.DGN, 16-16-FA-03-SD-13.DGN, 16-16-FA-03-SD-14.DGN, 16-16-FA-03-SD-15.DGN

TAMPA HARBOR  
HILLSBOROUGH COUNTY, FLORIDA  
**HYDROGRAPHIC EXAM SURVEY FY16  
12, 34 AND 43-FOOT PROJECT**  
STA. 56+00 THRU STA. 69+83 SEDDON CHANNEL  
**PLAN**

Scale: AS SHOWN  
Drawing no. **4**  
SHEET 04 OF 15

NOTES:  
1. REFER TO SURVEY NO. 16-161.  
2. SEE SHEET NO. 1 FOR SURVEY NOTES.



P.I STA. 42+13.23 LOWER SPARKMAN  
P.I STA. 42+13.23 UPPER SPARKMAN

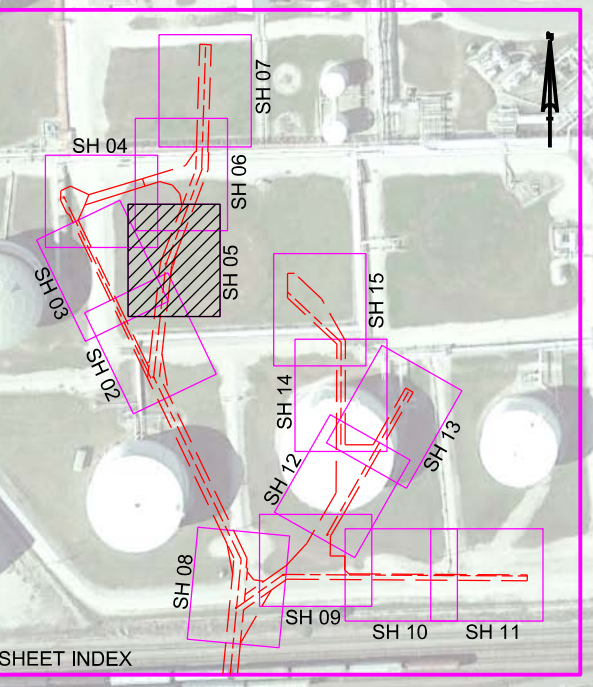
MATCHLINE SHEET NO. 02 STA. 28+00


MATCHLINE SHEET NO. 05 STA. 60+00

AIDS TO NAVIGATION	PLANE COORDINATES		LATITUDE	LONGITUDE
	X	Y		
LT-3 (08/16)	511,519	1,307,464	27°55'47.45"	82°26'52.65"
LT BUOY-5 (08/16)	511,680	1,308,825	27°56'00.93"	82°26'50.91"
LT-7 (08/16)	511,930	1,309,555	27°56'08.17"	82°26'48.16"



NOTES:  
1. REFER TO SURVEY NO. 16-161.  
2. SEE SHEET NO. 1 FOR SURVEY NOTES.





US Army Corps  
of Engineers  
Jacksonville District

SAFETY ON THIS JOB  
DEPENDS ON YOU

---

DEPARTMENT OF THE ARMY  
JACKSONVILLE DISTRICT, CORPS OF ENGINEERS  
JACKSONVILLE, FLORIDA

---

Drawn By: GHR  
Checked By: GHR  
Date: AUG 2016

---

XXXXXXXXXXXXXXXXXXXX  
XXXXXXXXXXXXXXXXXXXX  
XXXXXXXXXXXXXXXXXXXX  
16-161-BA-SOIL\_LISP.DGN  
16-161-BA-NAVY.DGN  
16-161-BA-HARBOR-CANAL.DGN  
16-161-BA-HARBOR-CANAL.DGN  
16-161-BA-HARBOR-CANAL.DGN

---

TAMPA HARBOR  
HILLSBOROUGH COUNTY, FLORIDA  
**HYDROGRAPHIC EXAM SURVEY FY16  
12, 34 AND 43-FOOT PROJECT**  
STA. 28+00 LOWER SPARKMAN CH. THRU STA. 60+00 UPPER SPARKMAN CH.

---

**PLAN**

---

Scale: AS SHOWN

---

Drawing no.  
**5**

---

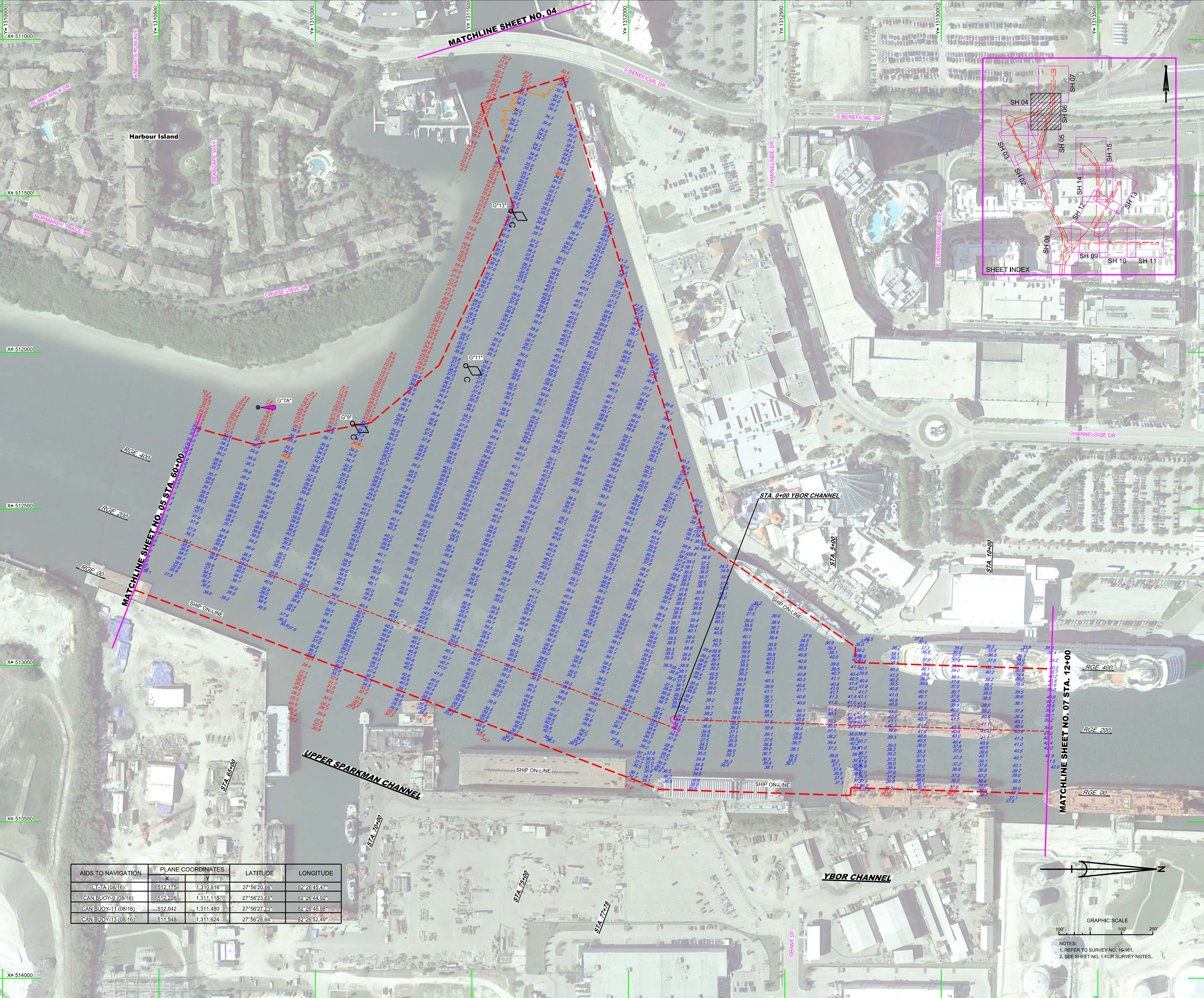
SHEET 05 OF 15

DEPARTMENT OF THE ARMY  
JACKSONVILLE DISTRICT, CORPS OF ENGINEERS  
JACKSONVILLE, FLORIDA

Checked By	GHR
Designed By	WRM
Drawn By	WRM
Scale	AUG 2016
Project No.	16-16-HARBOR-07.DGN

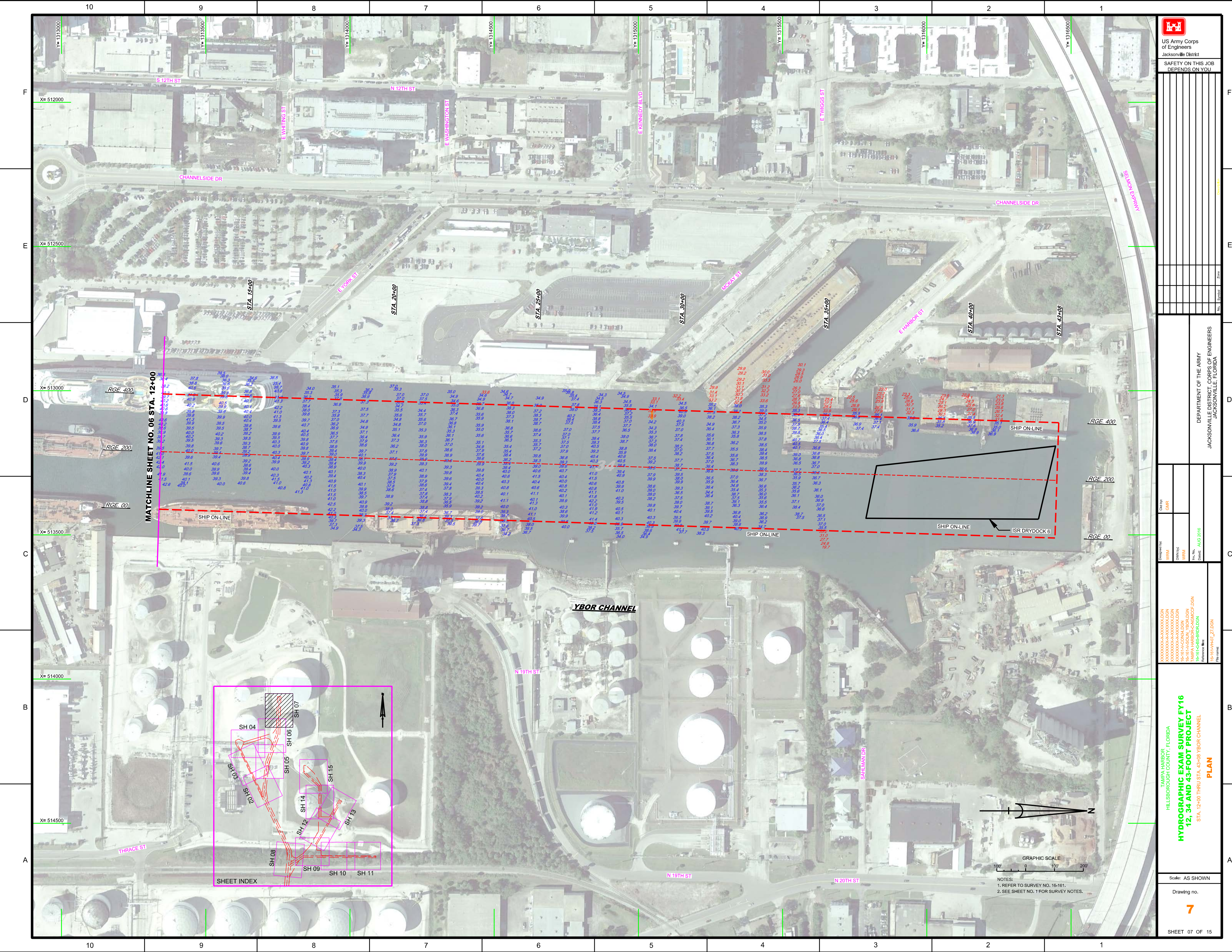
TAMPA HARBOR  
HILLSBOROUGH COUNTY, FLORIDA  
**HYDROGRAPHIC EXAM SURVEY FY16  
12, 34 AND 43-FOOT PROJECT**  
STA. 80+00 UPPER SPARKMAN CH. THRU STA. 12+00 YBOR CHANNEL  
**PLAN**

Scale: AS SHOWN  
Drawing no.  
**6**



AIDS TO NAVIGATION	PLANE COORDINATES		LATITUDE	LONGITUDE
	X	Y		
L-7A (08/16)	512,175	1,310,816	27°56'20.86"	82°26'45.47"
CAN BUOY-9 (08/16)	512,226	1,311,118	27°56'23.65"	82°26'44.92"
CAN BUOY-11 (08/16)	512,042	1,311,480	27°56'27.23"	82°26'46.98"
CAN BUOY-13 (08/16)	511,548	1,311,624	27°56'28.64"	82°26'52.49"

NOTES:  
1. REFER TO SURVEY NO. 16-161.  
2. SEE SHEET NO. 1 FOR SURVEY NOTES.



**US Army Corps of Engineers**  
Jacksonville District

SAFETY ON THIS JOB  
DEPENDS ON YOU

---

DEPARTMENT OF THE ARMY  
JACKSONVILLE DISTRICT, CORPS OF ENGINEERS  
JACKSONVILLE, FLORIDA

Checked By: GHR  
Designed By: WRM  
Drawn By: WRM  
File Name: 16-16-HR-07\_27.DGN  
Reference File: 16-16-HR-07\_27.DGN  
Date: AUG 2016

TAMPA HARBOR  
HILLSBOROUGH COUNTY, FLORIDA

**HYDROGRAPHIC EXAM SURVEY FY16  
12, 34 AND 43-FOOT PROJECT**

STA. 12+00 THRU STA. 49+08 YBOR CHANNEL

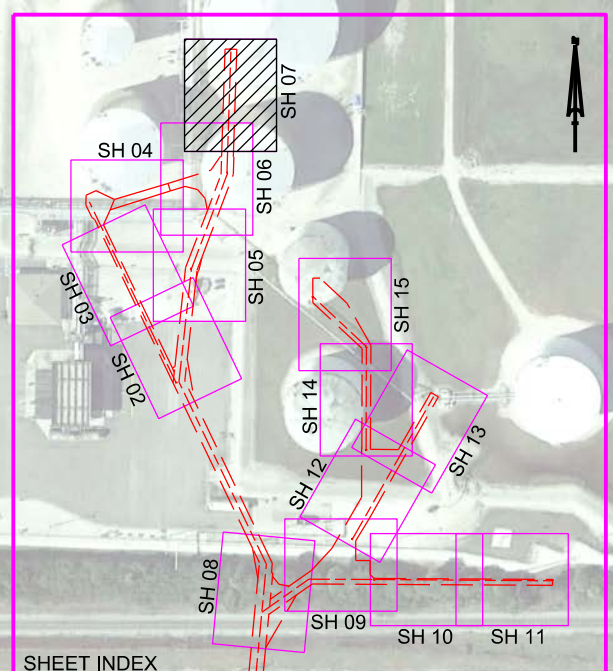
**PLAN**

Scale: AS SHOWN

Drawing no. **7**

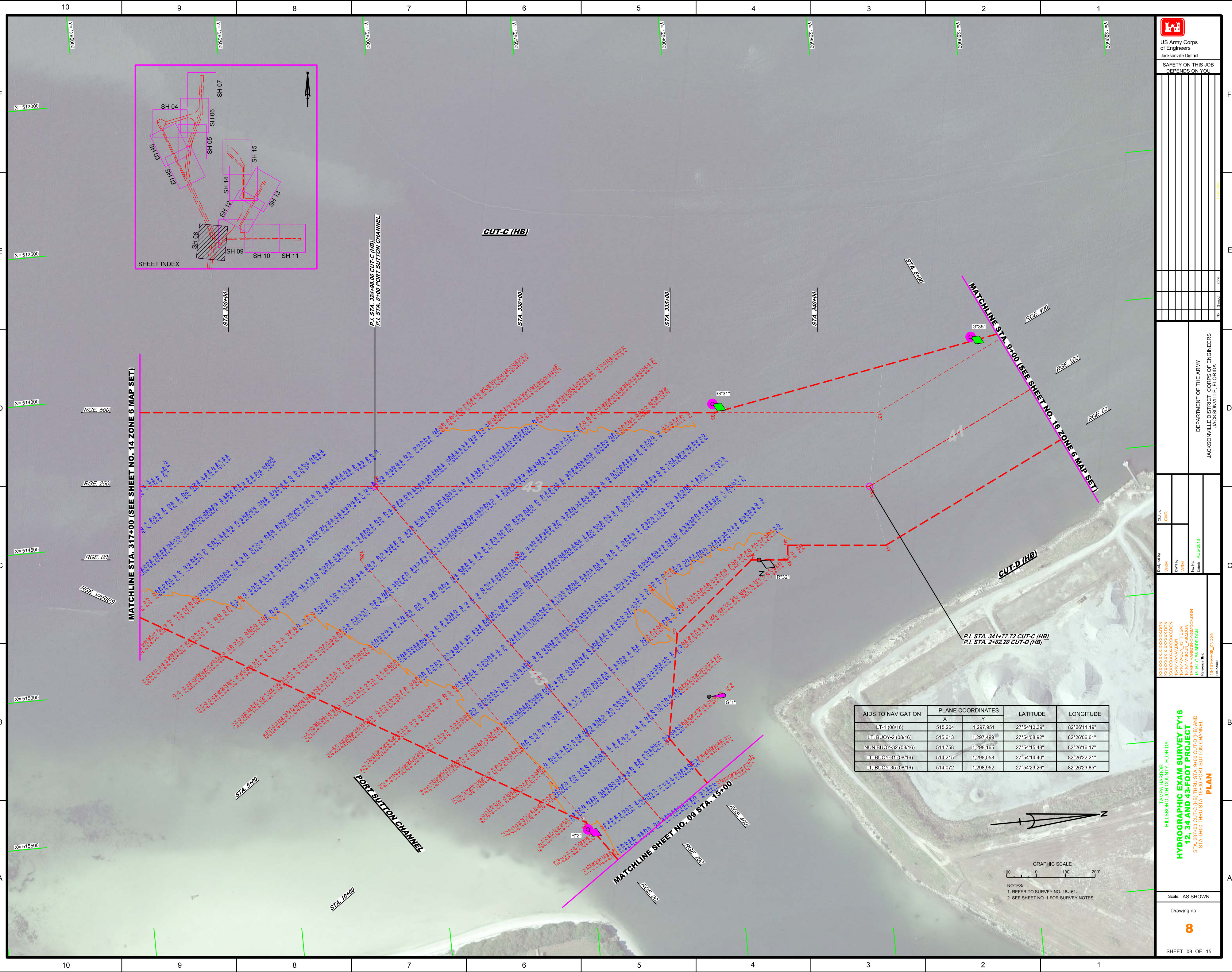
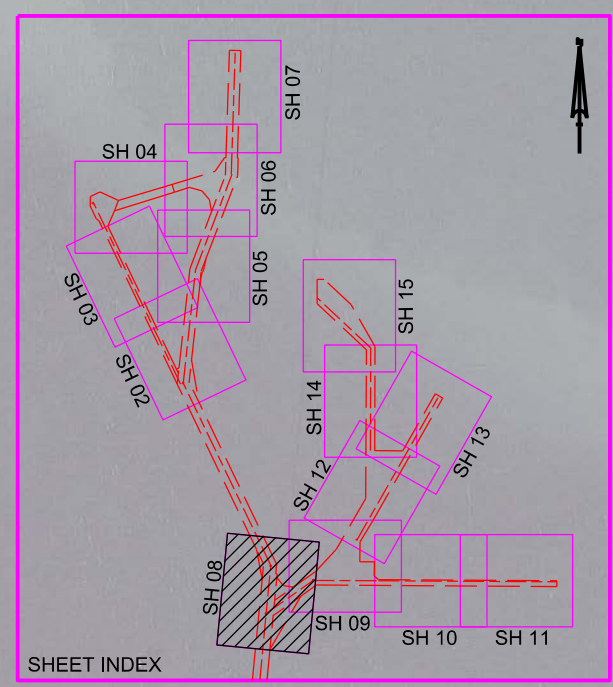
SHEET 07 OF 15

**MATCHLINE SHEET NO. 06 STA. 12+00**

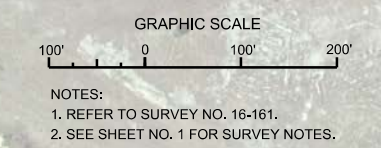


GRAPHIC SCALE  
100 0 100 200

NOTES:  
1. REFER TO SURVEY NO. 16-161.  
2. SEE SHEET NO. 1 FOR SURVEY NOTES.



AIDS TO NAVIGATION	PLANE COORDINATES		LATITUDE	LONGITUDE
	X	Y		
LT-1 (08/16)	515,204	1,297,951	27°54'13.39"	82°26'11.19"
LT BUOY-2 (08/16)	515,813	1,297,499	27°54'08.92"	82°26'06.61"
NUN BUOY-32 (08/16)	514,758	1,298,165	27°54'15.48"	82°26'16.17"
LT BUOY-31 (08/16)	514,215	1,298,058	27°54'14.40"	82°26'22.21"
LT BUOY-35 (08/16)	514,072	1,298,952	27°54'23.26"	82°26'23.85"



MATCHLINE STA. 317+00 (SEE SHEET NO. 14 ZONE 6 MAP SET)

MATCHLINE STA. 9+00 (SEE SHEET NO. 16 ZONE 6 MAP SET)

MATCHLINE SHEET NO. 09 STA. 15+00

P.I. STA. 324+98.06 CUT-C (HB)  
P.I. STA. 0+00 PORT SUTTON CHANNEL

P.I. STA. 341+77.72 CUT-C (HB)  
P.I. STA. 2+62.20 CUT-D (HB)

STA. 9+00

STA. 10+00

PORT SUTTON CHANNEL

CUT-C (HB)

CUT-D (HB)

RGE. 500

RGE. 250

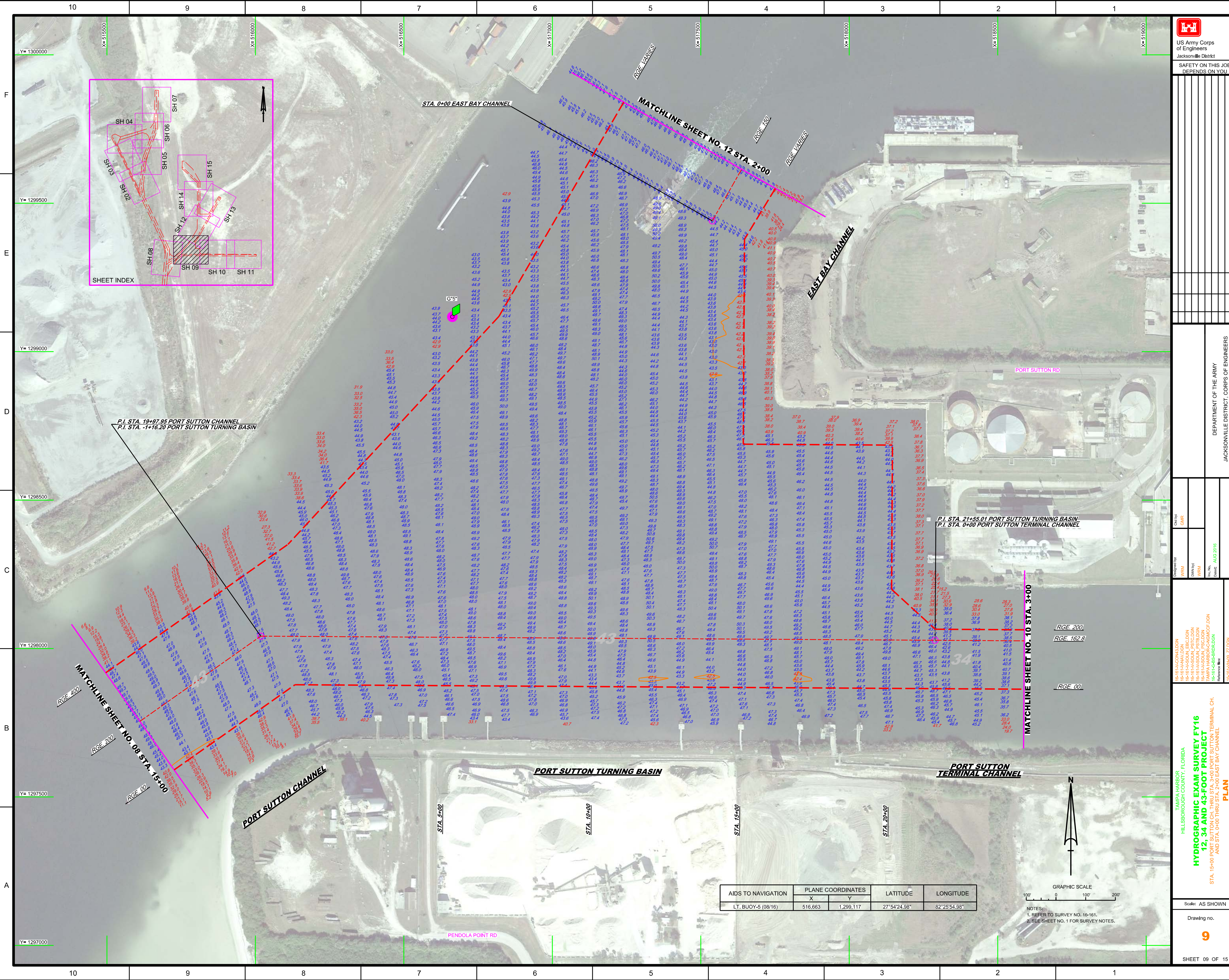
RGE. 00


RGE. VARIES

GRAPHIC SCALE

NOTES:  
 1. REFER TO SURVEY NO. 16-161.  
 2. SEE SHEET NO. 1 FOR SURVEY NOTES.







US Army Corps of Engineers  
Jacksonville District

**SAFETY ON THIS JOB  
DEPENDS ON YOU**

---

DEPARTMENT OF THE ARMY  
JACKSONVILLE, FLORIDA

---

Checked By: GHR  
Designed By: WRM  
Drawn By: WRM  
Reviewed By: WRM  
Date: AUG 2016

---

16-16-TACONALS.DGN  
16-16-BAHAY.DGN  
16-16-TACONALS.PST.CLDN  
16-16-BAHAY.PST.CLDN  
16-16-TACONALS-CAV.DGN  
16-16-BAHAY-CAV.DGN  
16-16-TACONALS-CAV.DGN  
16-16-BAHAY-CAV.DGN

---

**HYDROGRAPHIC EXAM SURVEY FY16  
12, 34 AND 43-FOOT PROJECT**

STA. 15+00 PORT SUTTON CH. THRU STA. 2+00 PORT SUTTON TERMINAL CH.  
AND STA. 0+00 THRU STA. 2+00 EAST BAY CHANNEL

**PLAN**

---

Scale: AS SHOWN

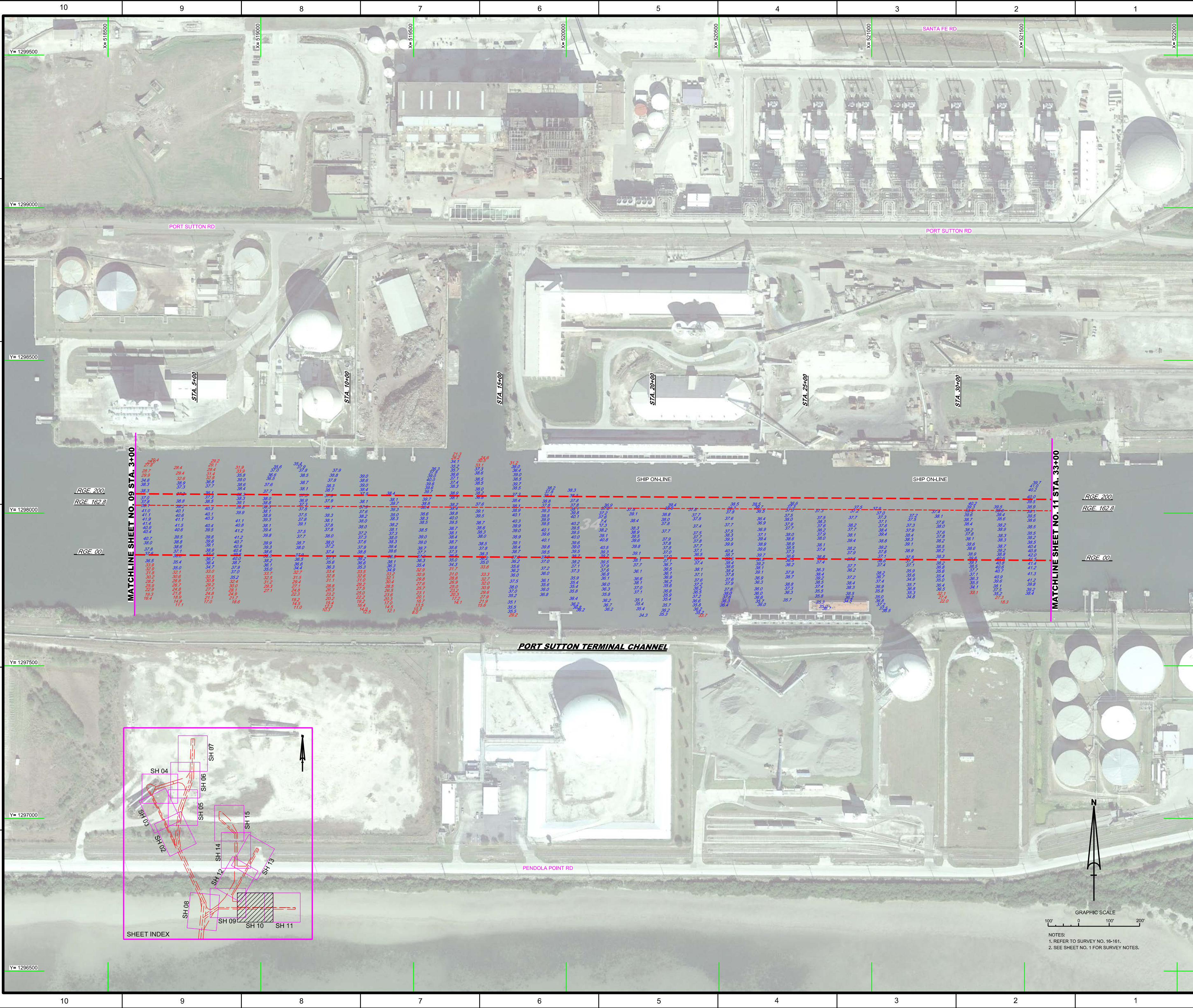
Drawing no. **9**

SHEET 09 OF 15

AIDS TO NAVIGATION	PLANE COORDINATES		LATITUDE	LONGITUDE
	X	Y		
LT. BUOY-5 (08/16)	516,663	1,299,117	27°54'24.98"	82°25'54.98"

GRAPHIC SCALE  
100' 0 100' 200'

NOTES:  
1. REFER TO SURVEY NO. 16-161.  
2. SEE SHEET NO. 1 FOR SURVEY NOTES.



**US Army Corps of Engineers**  
Jacksonville District

**SAFETY ON THIS JOB**  
DEPENDS ON YOU

DEPARTMENT OF THE ARMY  
JACKSONVILLE DISTRICT CORPS OF ENGINEERS  
JACKSONVILLE, FLORIDA

Check By: GHR

Designed By: WRM, DWN, PJC, WRM, WRM, WRM

File Name: 16-16-FG-FS-BR16L.DGN

Reference File: 16-16-FG-FS-BR16L.DGN

Date: AUG 2016

TAMPA HARBOR  
HILLSBOROUGH COUNTY, FLORIDA

**HYDROGRAPHIC EXAM SURVEY FY16**  
**12, 34 AND 43-FOOT PROJECT**

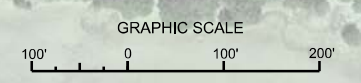
STA. 3+00 THRU STA. 33+00 PORT SUTTON TERMINAL CHANNEL

**PLAN**

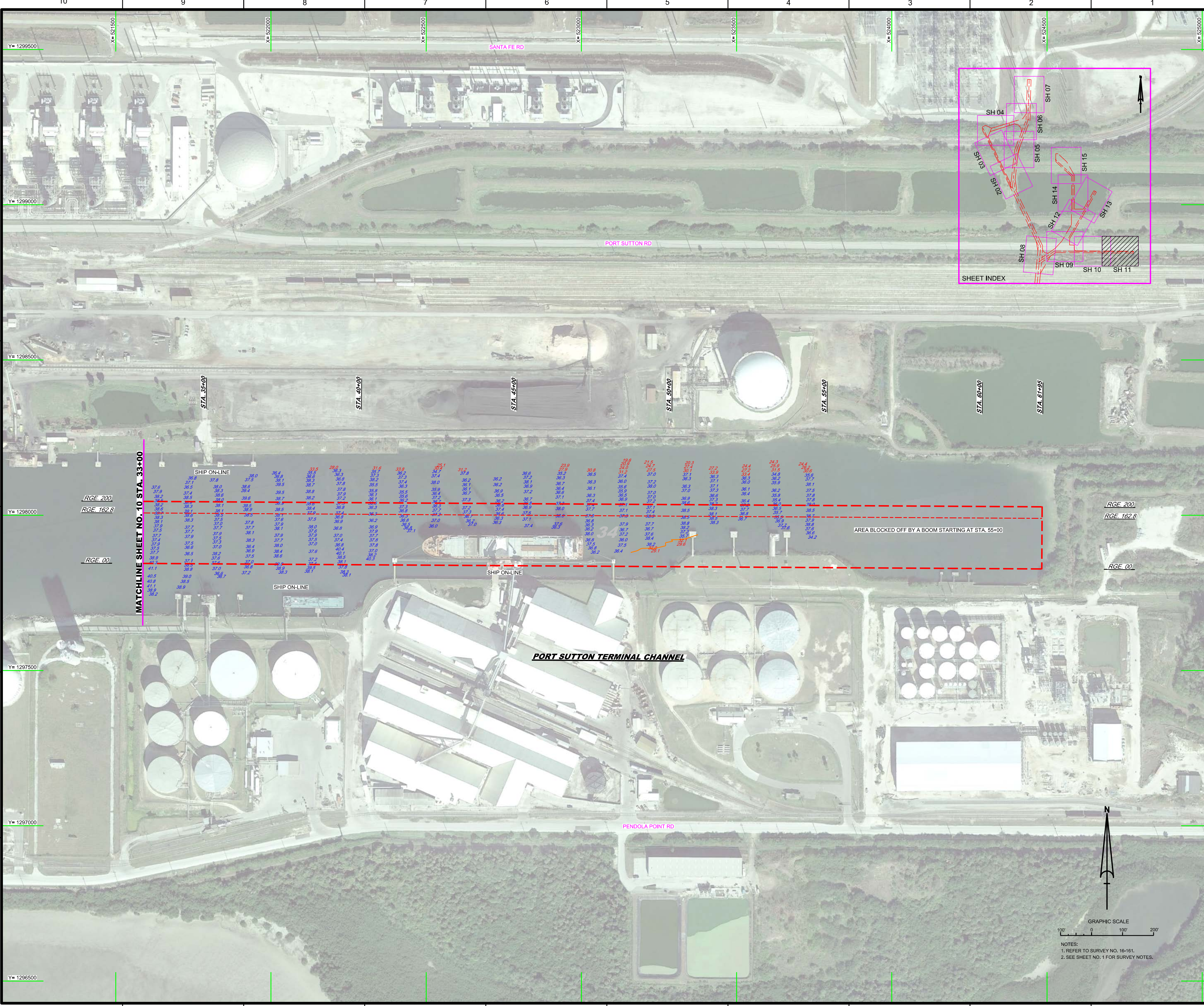
Scale: AS SHOWN

Drawing no. **10**

SHEET 10 OF 15



NOTES:  
1. REFER TO SURVEY NO. 16-161,  
2. SEE SHEET NO. 1 FOR SURVEY NOTES.



MATCHLINE SHEET NO. 10 STA. 33+00

RGE. 200  
RGE. 162.8  
RGE. 00

RGE. 200  
RGE. 162.8  
RGE. 00

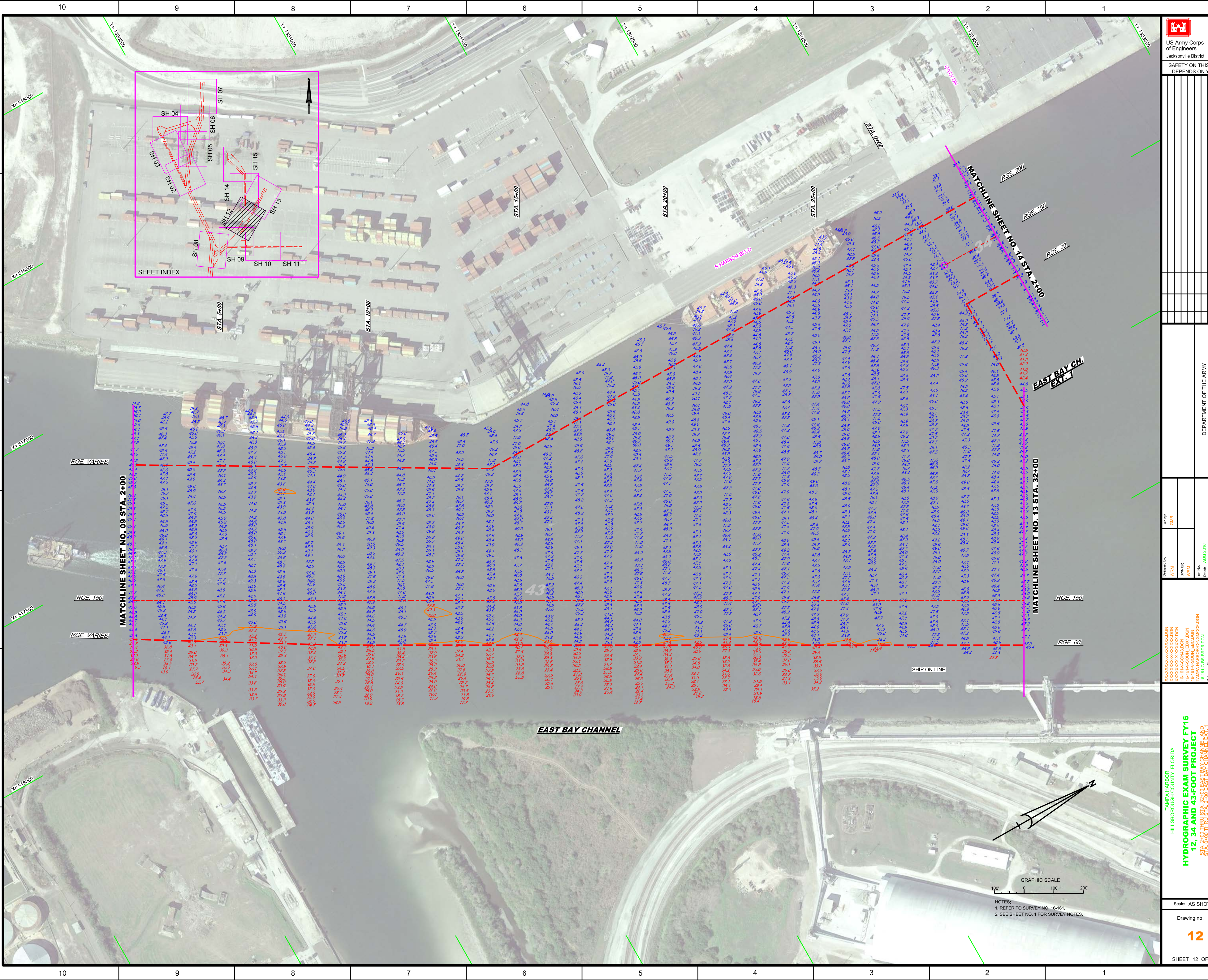
TAMPA HARBOR  
HILLSBOROUGH COUNTY, FLORIDA  
**HYDROGRAPHIC EXAM SURVEY FY16  
12, 34 AND 43-FOOT PROJECT**  
STA. 39+00 THRU STA. 67+00 PORT SUTTON TERMINAL CHANNEL  
**PLAN**  
Scale: AS SHOWN  
Drawing no.  
**11**  
SHEET 11 OF 15

US Army Corps  
of Engineers  
Jacksonville District  
SAFETY ON THIS JOB  
DEPENDS ON YOU

DEPARTMENT OF THE ARMY  
JACKSONVILLE DISTRICT, CORPS OF ENGINEERS  
JACKSONVILLE, FLORIDA

Designed by: WRM  
Checked by: GHR  
DWG No: WRM  
Rev: WRM  
Date: AUG 2016

NOTES:  
1. REFER TO SURVEY NO. 16-161.  
2. SEE SHEET NO. 1 FOR SURVEY NOTES.



US Army Corps of Engineers  
 Jacksonville District  
**SAFETY ON THIS JOB DEPENDS ON YOU**

---

Department of the Army  
 Jacksonville District, Corps of Engineers  
 Jacksonville, Florida

---

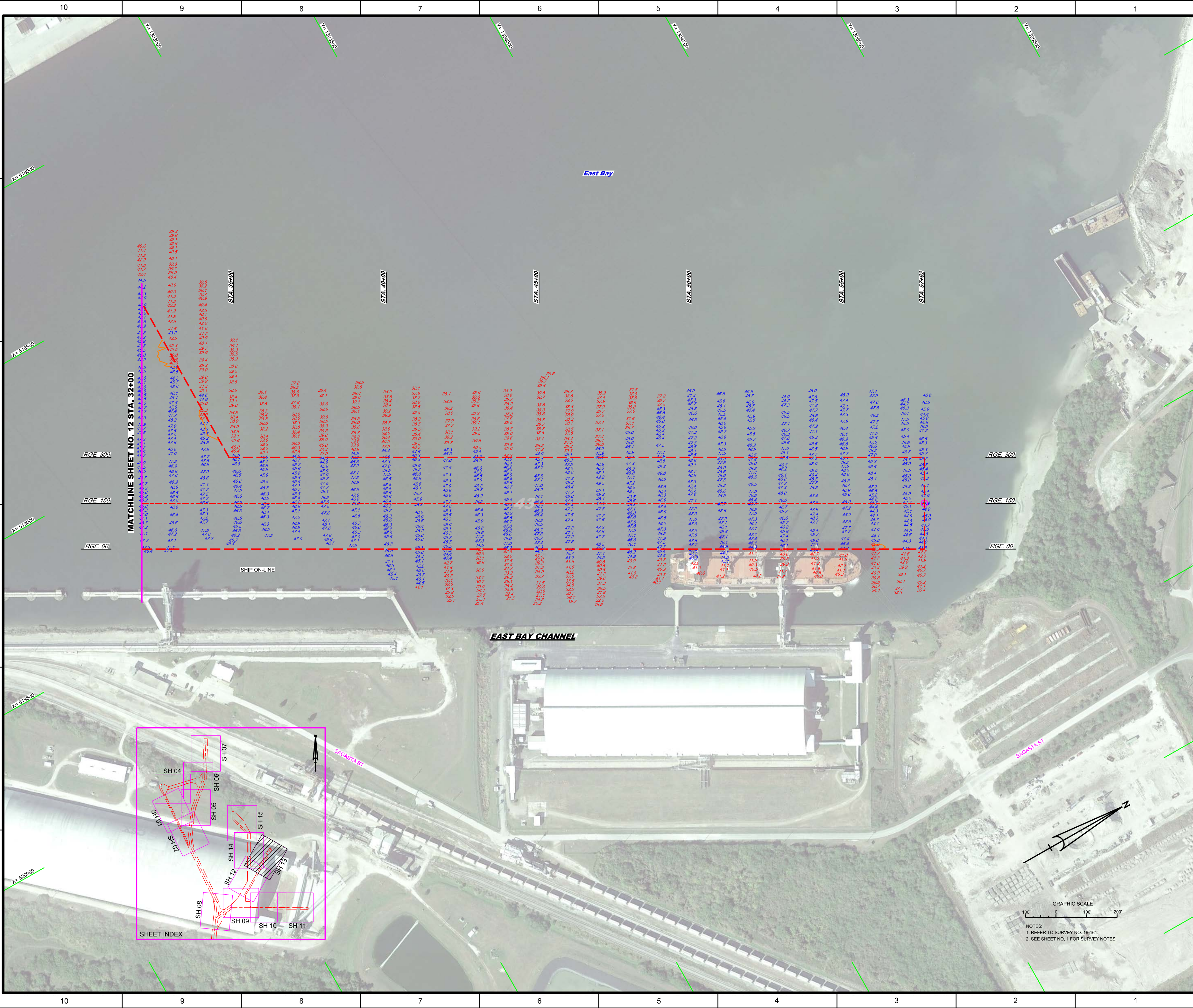
Project: TAMPA HARBOR  
 Hillsborough County, Florida  
**HYDROGRAPHIC EXAM SURVEY FY16 12, 34 AND 43-FOOT PROJECT**  
 STA. 2+00 THRU STA. 32+00 EAST BAY CHANNEL AND STA. 0+00 THRU STA. 4+00 EAST BAY CHANNEL EXT. 1  
 PLAN

---

Drawn by: GHR  
 Checked: GHR  
 Date: AUG 2016

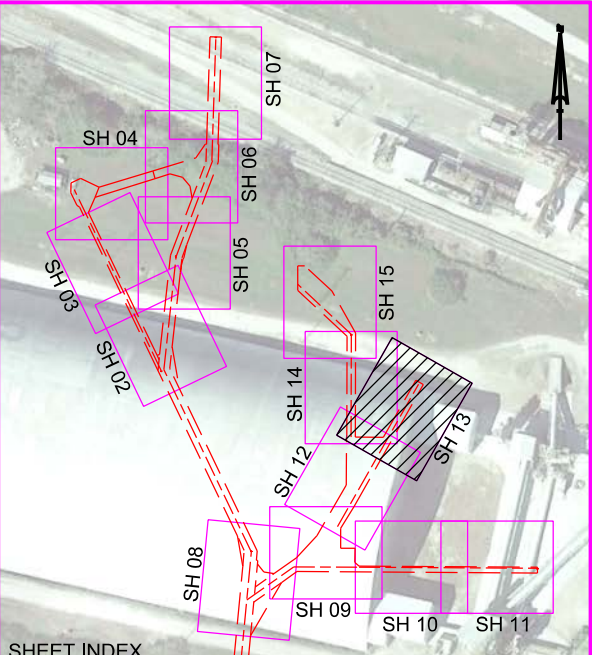
---

Scale: AS SHOWN  
 Drawing No. **12**  
 SHEET 12 OF 15



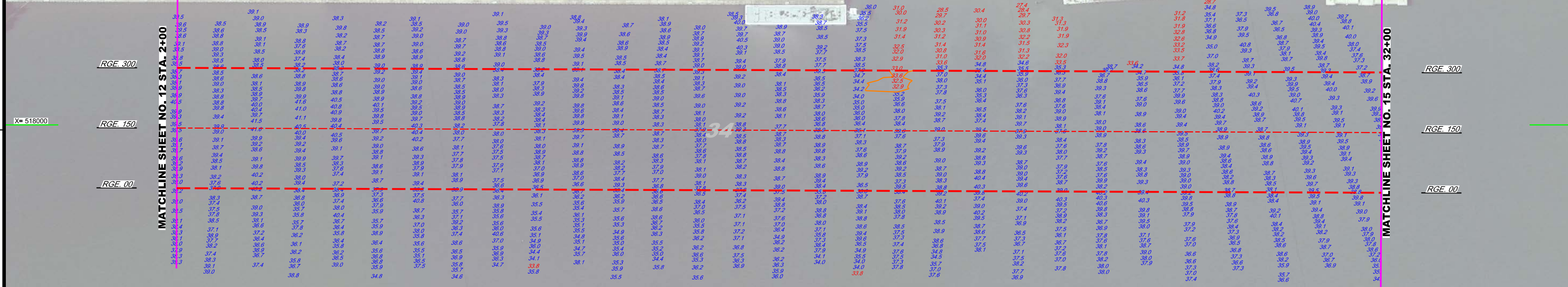
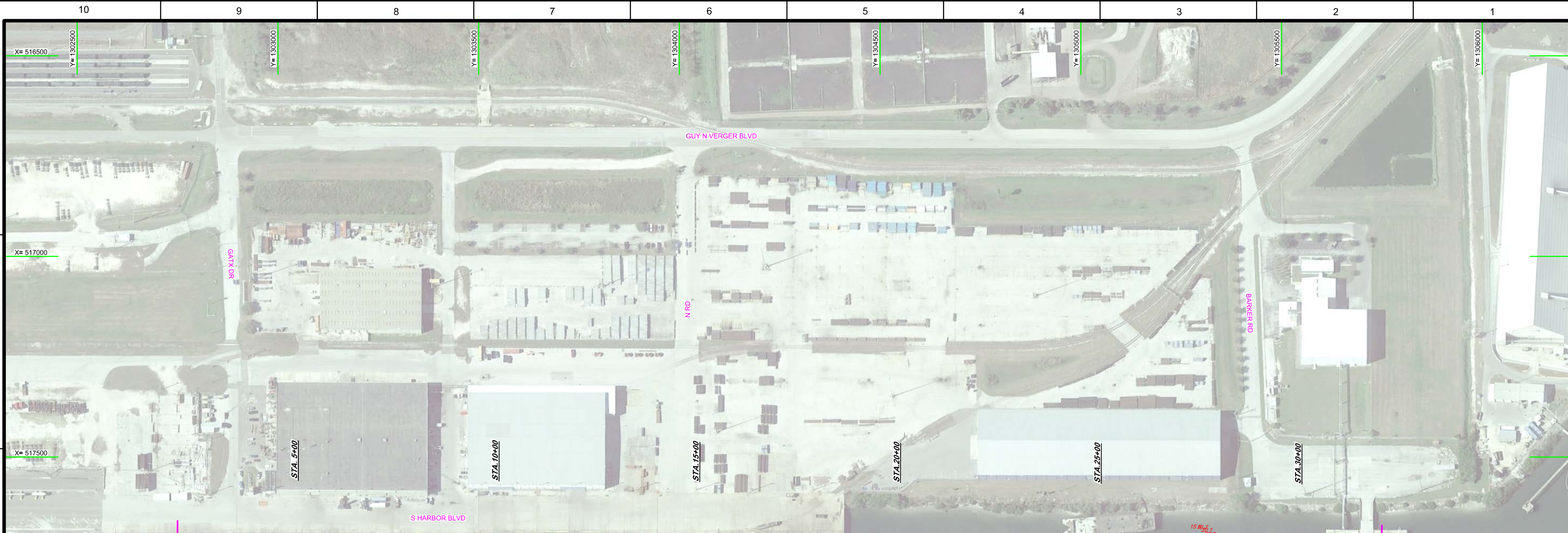
MATCHLINE SHEET NO. 12 STA. 32+00

SHEET INDEX

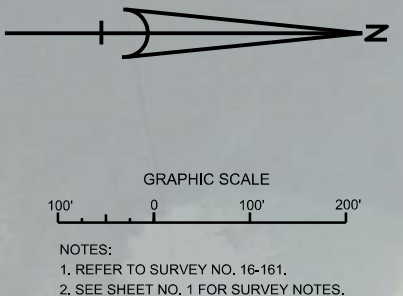
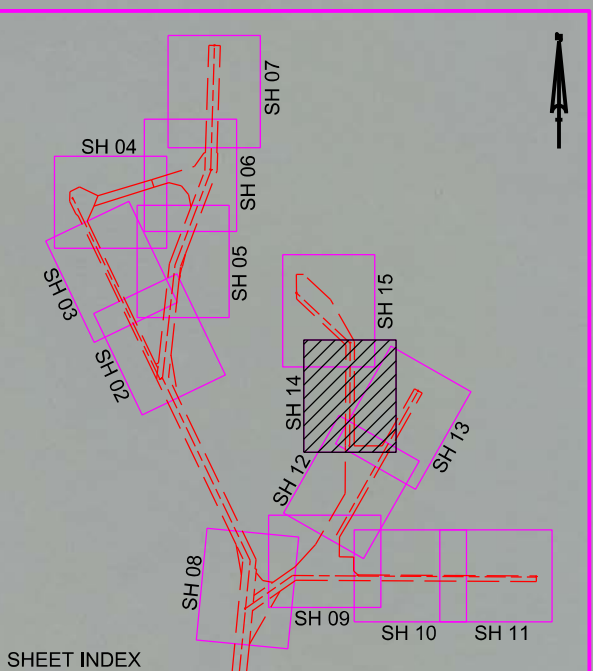


US Army Corps of Engineers Jacksonville District <b>SAFETY ON THIS JOB DEPENDS ON YOU</b>	
Drawn by: <b>WRM</b> Checked by: <b>WRM</b> Date: <b>08/13/2018</b>	Designated by: <b>WRM</b> Date: <b>08/13/2018</b>
DEPARTMENT OF THE ARMY JACKSONVILLE DISTRICT, CORPS OF ENGINEERS JACKSONVILLE, FLORIDA	
<b>PLAN</b> TAMPABARBOR HILLSBOROUGH COUNTY, FLORIDA <b>HYDROGRAPHIC EXAM SURVEY FY16</b> <b>12, 34 AND 43-FOOT PROJECT</b> STA. 32+00 THRU STA. 57+02 EAST BAY CHANNEL	
Scale: AS SHOWN Drawing no. <b>13</b> SHEET 13 OF 15	

NOTES:  
 1. REFER TO SURVEY NO. 164161.  
 2. SEE SHEET NO. 1 FOR SURVEY NOTES.



**EAST BAY CH. EXT. 1**



NOTES:  
 1. REFER TO SURVEY NO. 16-161.  
 2. SEE SHEET NO. 1 FOR SURVEY NOTES.

US Army Corps of Engineers  
 Jacksonville District  
**SAFETY ON THIS JOB DEPENDS ON YOU**

---

DEPARTMENT OF THE ARMY  
 JACKSONVILLE DISTRICT CORPS OF ENGINEERS  
 JACKSONVILLE, FLORIDA

---

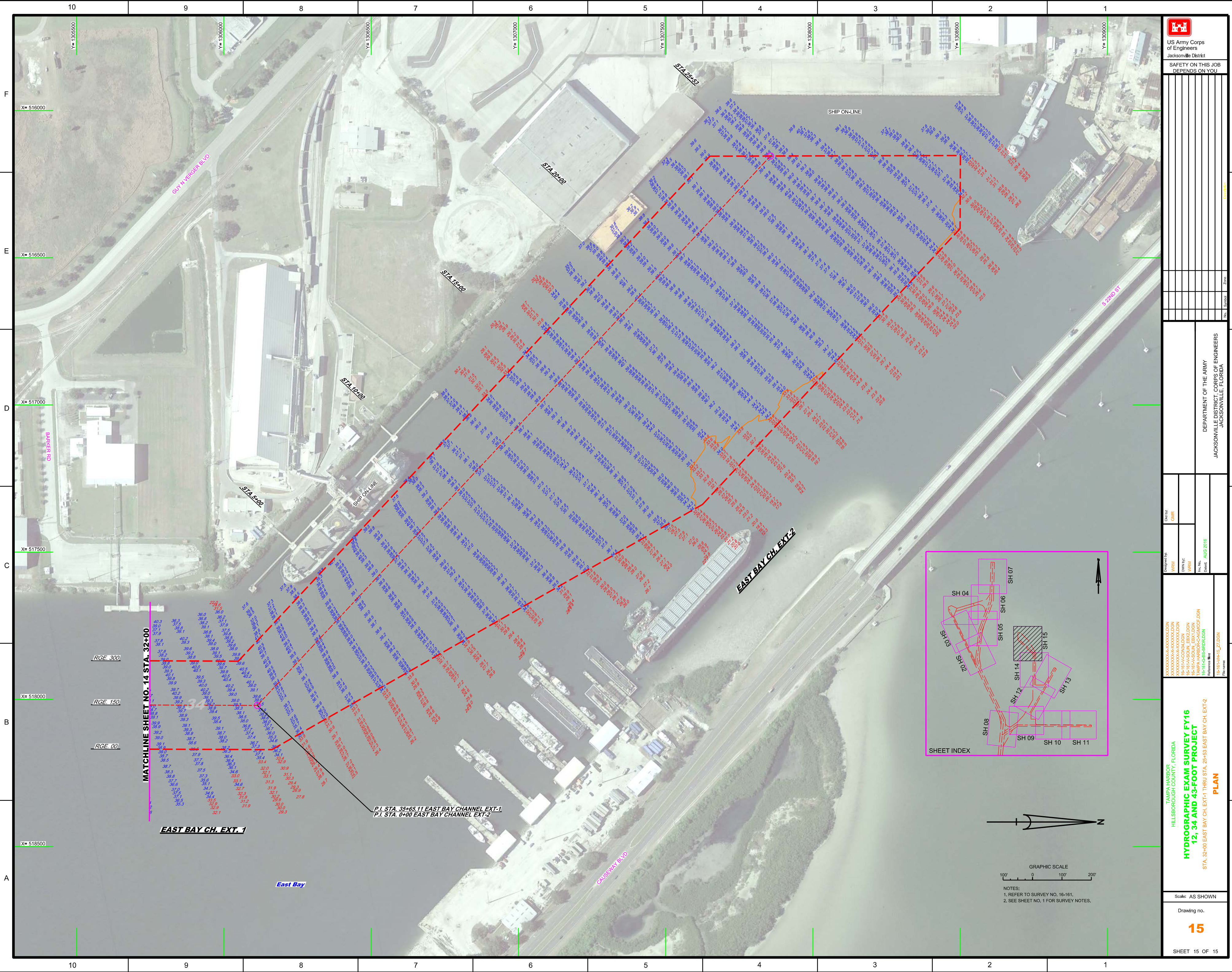
Created By: GHR  
 Checked By: GHR  
 Design Date: AUG 2016  
 Scale: AS SHOWN

---

**TAMPA HARBOR**  
 HILLSBOROUGH COUNTY, FLORIDA  
**HYDROGRAPHIC EXAM SURVEY FY16**  
**12, 34 AND 43-FOOT PROJECT**  
 STA. 2+00 THRU STA. 32+00 EAST BAY CHANNEL EXTENSION-1  
**PLAN**

---

Drawing no. **14**  
 SHEET 14 OF 15



<p>US Army Corps of Engineers Jacksonville District</p>	
<p>SAFETY ON THIS JOB DEPENDS ON YOU</p>	
<p>DEPARTMENT OF THE ARMY JACKSONVILLE DISTRICT, CORPS OF ENGINEERS JACKSONVILLE, FLORIDA</p>	
<p>Checked By: GHR</p>	<p>Designed By: WRM</p>
<p>Drawn By: WRM</p>	<p>Field Date: AUG 2018</p>
<p>Reference File: 16-16-ES-BR10L.DGN</p>	<p>File Name: 16-16-ES-BR15_27.DGN</p>
<p>TAMPA HARBOR HILLSBOROUGH COUNTY, FLORIDA</p> <p><b>HYDROGRAPHIC EXAM SURVEY FY16 12, 34 AND 43-FOOT PROJECT</b></p> <p>STA. 32+00 EAST BAY CH. EXT-1 THRU STA. 25+53 EAST BAY CH. EXT-2</p> <p><b>PLAN</b></p>	
<p>Scale: AS SHOWN</p>	
<p>Drawing no.</p> <p><b>15</b></p>	
<p>SHEET 15 OF 15</p>	

