

U.S. NAVAL STATION MAYPORT 3RD QUARTER EXAMINATION SURVEY FY16

US Army Corps of Engineers
Jacksonville District
SAFETY ON THIS JOB
DEPENDS ON YOU



SHEET INDEX



LEGEND	
	MONUMENT
	LIGHTED BEACON
	GREEN DAYBEACON
	RED DAYBEACON
	RED LIGHTED BUOY
	GREEN LIGHTED BUOY
	CAN BUOY
	NUN BUOY
	TIDE STAFF
	PROJECT DEPTH

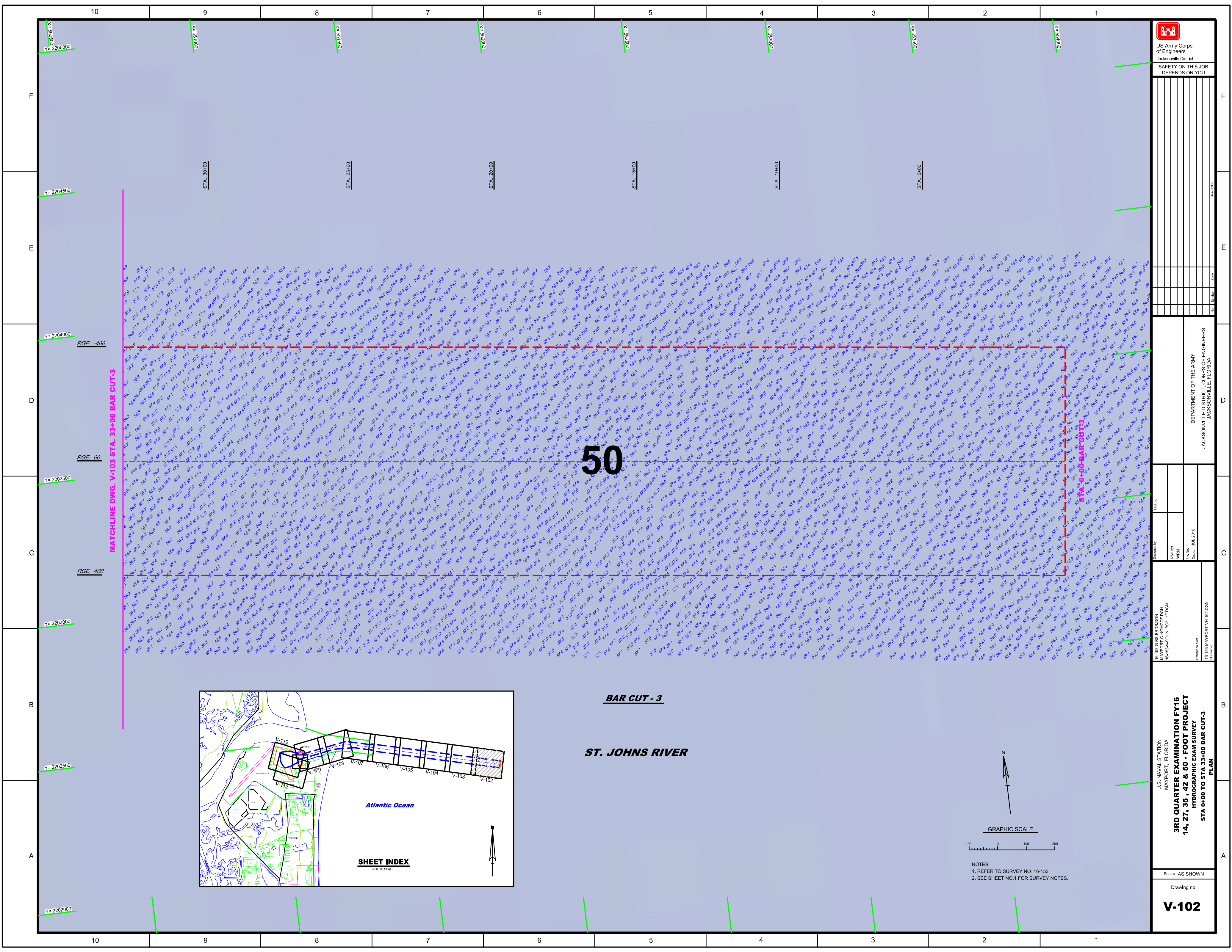
- SURVEY NOTES**
- REFER TO SURVEY NO. 16-153.
 - DEPTHS DEPICTED BY THIS SURVEY ARE REFERENCED TO MLLW, TIDAL EPOCH 1983-2001 AS REPORTED BY THE NATIONAL OCEANIC AND ATMOSPHERIC ADMINISTRATION (NOAA). NOAA'S VDATUM MODEL WAS USED AND CALIBRATED TO THE PUBLISHED MLLW HEIGHTS OF THE BENCHMARKS ASSOCIATED WITH THE TIDE GAGE SITES SPECIFIED BELOW.
NOAA TIDAL STATION '872-0211' MAYPORT NAVAL STATION, ST. JOHNS RIVER FOR ENTIRE PROJECT.
 - TIDAL REDUCTIONS WERE OBTAINED UTILIZING A REAL-TIME KINEMATIC (RTK) GPS AND REFERENCED TO MLLW UTILIZING A HYPACK KINEMATIC TIDE DATUM (KTD) MODEL. KTD FILE NAME IS: "CAMDENG-NASSAU-DUVAL-STJOHNS-FLAGLER_01FEB2011.KTD".
 - ALL ELEVATIONS ARE BELOW THE CHART DATUM UNLESS PRECEDED BY A (+) SIGN.
 - PLANE COORDINATES ARE BASED ON THE TRANSVERSE MERCATOR PROJECTION FOR THE EAST ZONE OF FLORIDA AND REFERENCED TO NORTH AMERICAN DATUM OF 1983 (NAD83).
 - ALL STATIONING REFERS TO THE CENTERLINE OF THE CHANNEL.
 - THIS SURVEY WAS PERFORMED USING REAL-TIME KINEMATIC (RTK) GPS POSITIONING WITH THE FOLLOWING REFERENCE BASE LOCATION:
REFERENCE BASE LOCATED AT "CHARLIE TOWER" (OPUS PID: BBDC09)
TIDE STAFF LOCATED FROM "STARK" (OPUS PID: BBB299)
 - VERTICAL MEASUREMENTS WERE MADE USING A ROSS MODEL 835B SMART-SONDER WITH A DUAL-FREQUENCY 28/200 KHZ SINGLE-BEAM TRANSDUCER AND A R220C 2024 MULTI-BEAM SYSTEM. SOUNDINGS SHOWN ARE IN HIGH FREQUENCY (200KHZ) FOR STA. 0+00 THRU STA. 198+63.25 BAR CUT-3, STA. 0+00 THRU STA. 56+27.94 OF THE ENTRANCE CHANNEL AND LOW FREQUENCY (28 KHZ) FROM STA. 56+27.94 OF THE ENTRANCE CHANNEL THRU THE TURNING BASIN, DESTROYER SLIP AND THE SMALL BOAT BASIN.
- | VESSEL | DATE OF SURVEY | CUT |
|--------|----------------|---|
| SB-46 | 23 JUN 2016 | FOXTROT PIER, TURNING BASIN |
| SB-46 | 07-08 JUL 2016 | BAR CUT-3 |
| SB-46 | 09 JUL 2016 | ENTRANCE CHANNEL |
| SB-46 | 15 JUL 2016 | TURNING BASIN, DESTROYER SLIP, SMALL BOAT BASIN |
- AIDS TO NAVIGATION WERE LOCATED DURING THIS SURVEY.
 - THE INFORMATION DEPICTED ON THIS MAP REPRESENTS THE RESULTS OF SURVEYS MADE ON THE DATES INDICATED ABOVE AND CAN ONLY BE CONSIDERED AS INDICATING THE GENERAL CONDITIONS AT THAT TIME. THIS CHART IS SOLELY FOR THE DISTRIBUTION OF AVAILABLE DEPTHS AT THE TIME OF THE SURVEY.
 - SURVEY ACCURACY PERFORMANCE STANDARDS, QUALITY CONTROL, AND QUALITY ASSURANCE REQUIREMENTS WERE FOLLOWED DURING THIS SURVEY IN ACCORDANCE WITH USACE EM 1110-2-1003, HYDROGRAPHIC SURVEYING, 30 NOV 2013.


U.S. NAVAL STATION
MAYPORT, FLORIDA
3RD QUARTER EXAMINATION FY16
14, 27, 35, 42 & 50 - FOOT PROJECT
HYDROGRAPHIC EXAM SURVEY

Scale: AS SHOWN
Drawing no.
VH-101

DEPARTMENT OF THE ARMY
JACKSONVILLE DISTRICT, CORPS OF ENGINEERS
JACKSONVILLE, FLORIDA

Check by: []
Designed by: []
Drawn by: WRM
In. No.: []
Date: JUL 2016

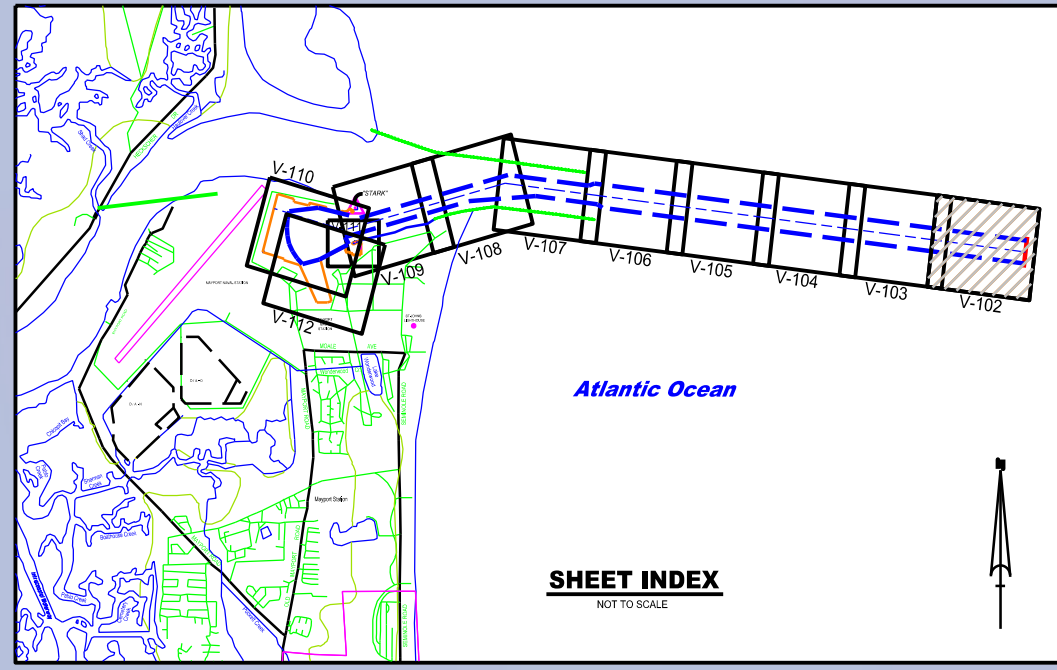



 US Army Corps of Engineers
 Jacksonville District
 SAFETY ON THIS JOB
 DEPENDS ON YOU

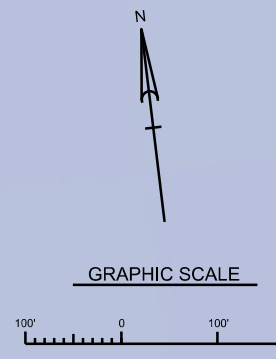
DEPARTMENT OF THE ARMY
 JACKSONVILLE DISTRICT CORPS OF ENGINEERS
 JACKSONVILLE, FLORIDA

16-153C-B3-BRIDLIN
 MAYPORT-ENGINEERING
 16-153A-SOON_LCL_TJFDON
 16-153A-MAYPORT-AH-02LON
 Scale: AS SHOWN
 Drawing no.

U.S. NAVAL STATION
 MAYPORT, FLORIDA
3RD QUARTER EXAMINATION FY16
14, 27, 35, 42 & 50 - FOOT PROJECT
 HYDROGRAPHIC EXAM SURVEY
 STA 0+00 TO STA. 33+00 BAR CUT-3
PLAN
V-102



BAR CUT - 3
ST. JOHNS RIVER



NOTES:
 1. REFER TO SURVEY NO. 16-153.
 2. SEE SHEET NO.1 FOR SURVEY NOTES.

AIDS TO NAVIGATION	PLANE COORDINATES		LATITUDE	LONGITUDE
	X	Y		
LT. BUOY-7 (07/16)	534,867	2,204,953	30°23'53.53"	81°23'05.09"
LT. BUOY-8 (07/16)	535,198	2,205,828	30°24'02.21"	81°23'01.35"

US Army Corps of Engineers
Jacksonville District
SAFETY ON THIS JOB
DEPENDS ON YOU

DEPARTMENT OF THE ARMY
JACKSONVILLE DISTRICT, CORPS OF ENGINEERS
JACKSONVILLE, FLORIDA

16-153C-BS-BIRDSON
16-153C-BS-NGRICE/DON
16-153C-BS-ROBERTSON
16-153C-BS-VAUGHN
16-153C-BS-CONRADSON

Checked By: [Blank]
Designed By: [Blank]
Drawn By: WRM
In Charge: [Blank]
Date: JUL 2016

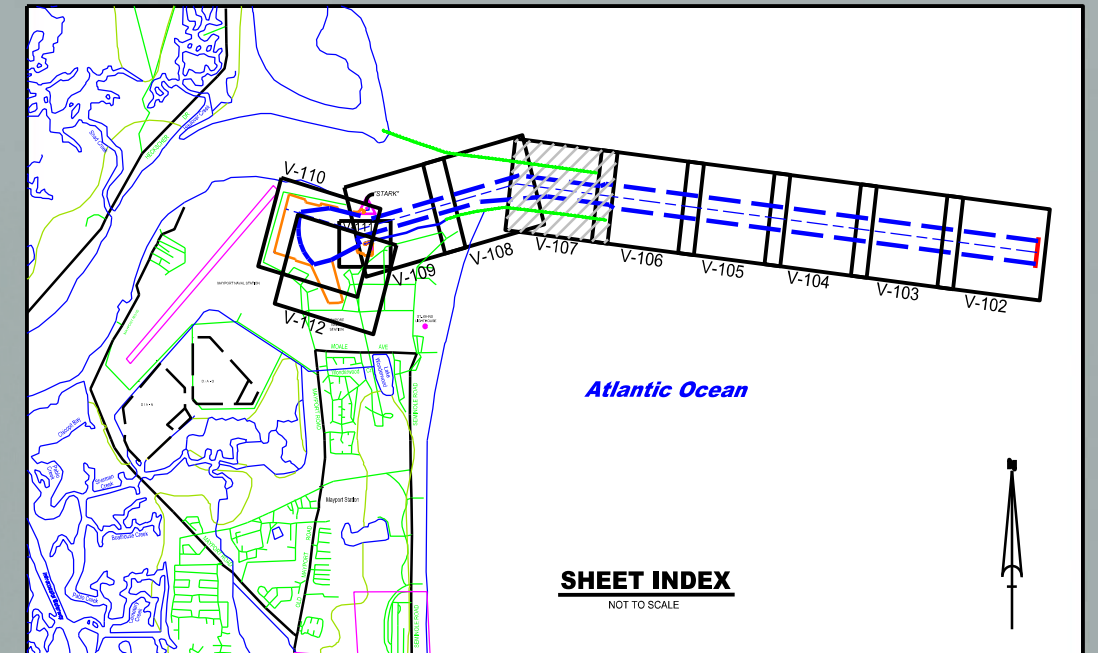
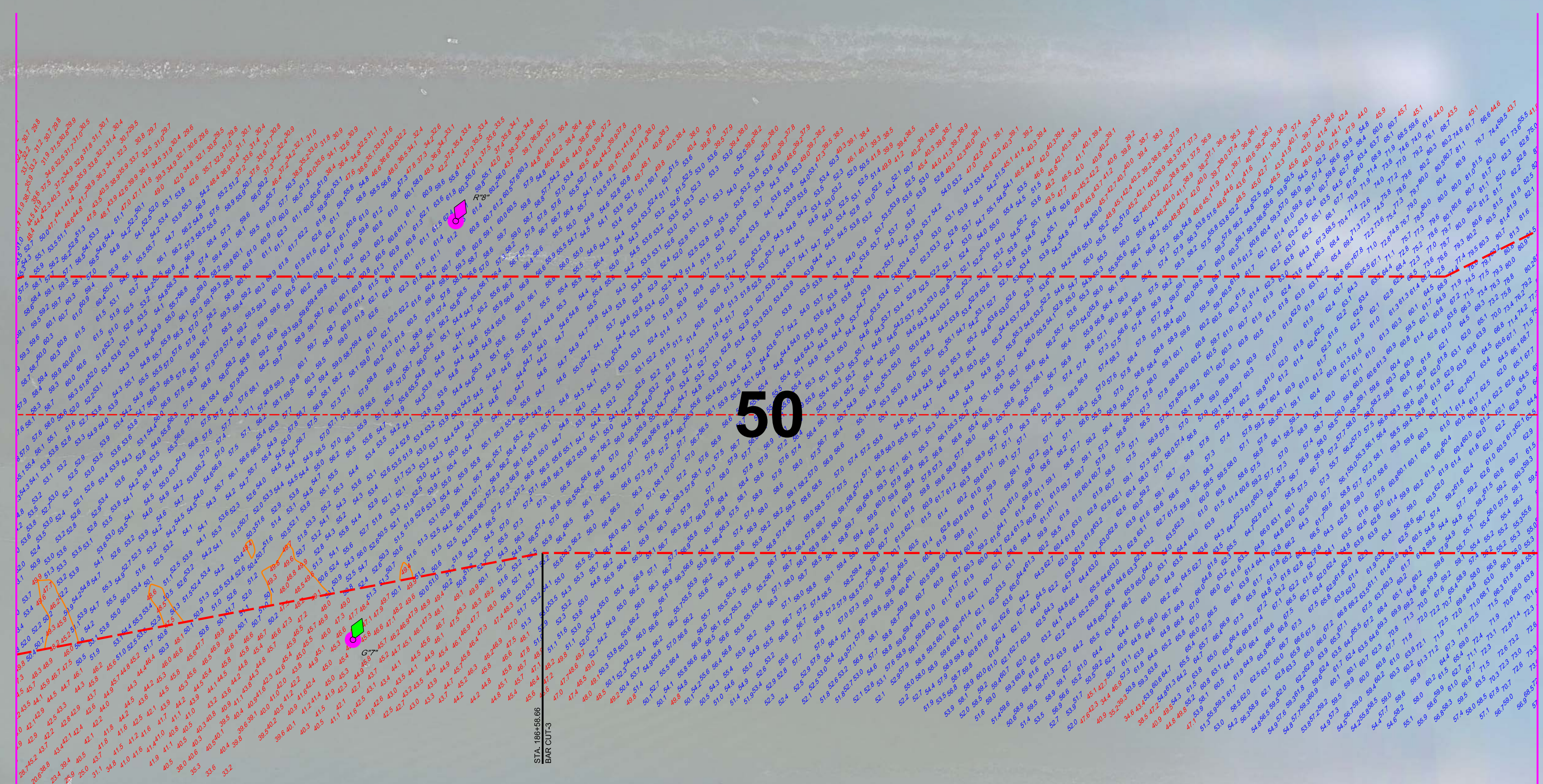
U.S. NAVAL STATION
MAYPORT, FLORIDA

**3RD QUARTER EXAMINATION FY16
14, 27, 35, 42 & 50 - FOOT PROJECT**
HYDROGRAPHIC EXAM SURVEY

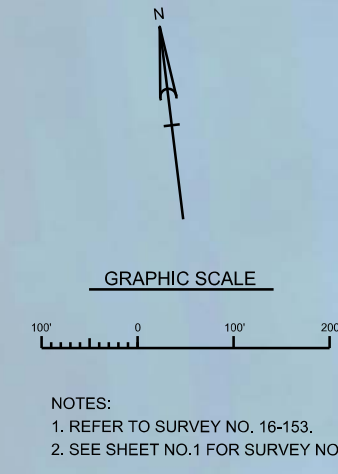
STA 165+00 TO STA 198+00 BAR CUT-3

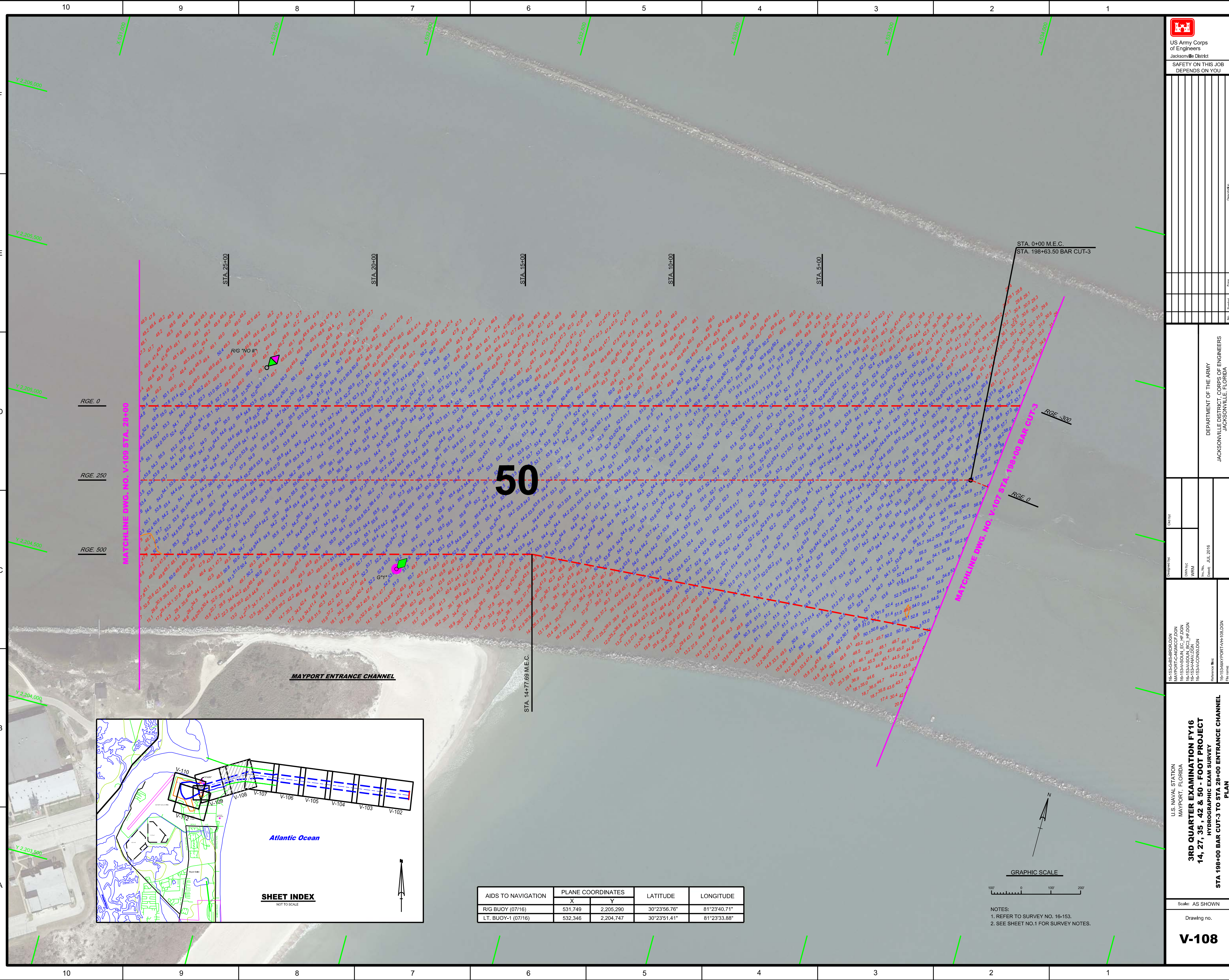
Scale: AS SHOWN

Drawing No. **V-107**

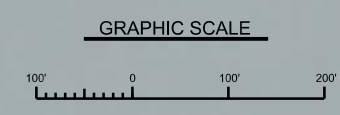


BAR CUT - 3
ST. JOHNS RIVER

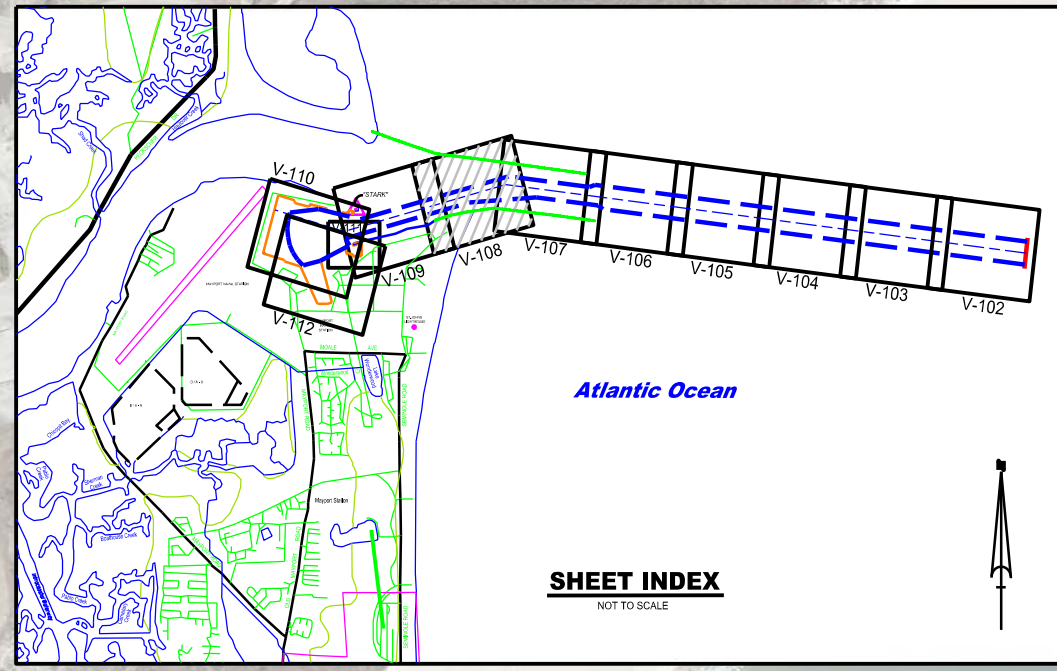




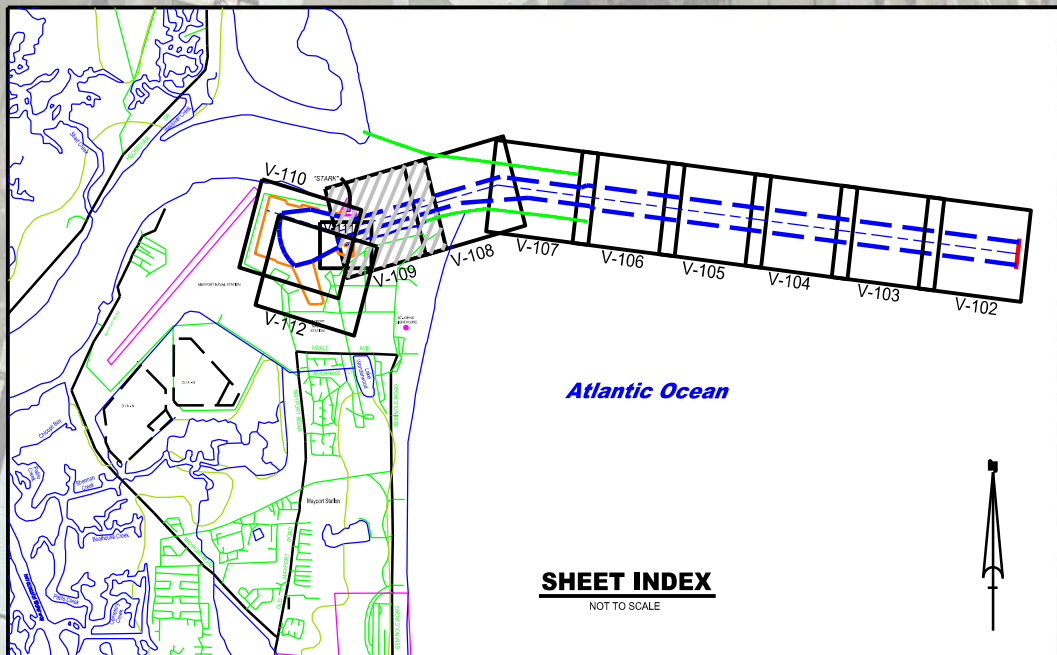
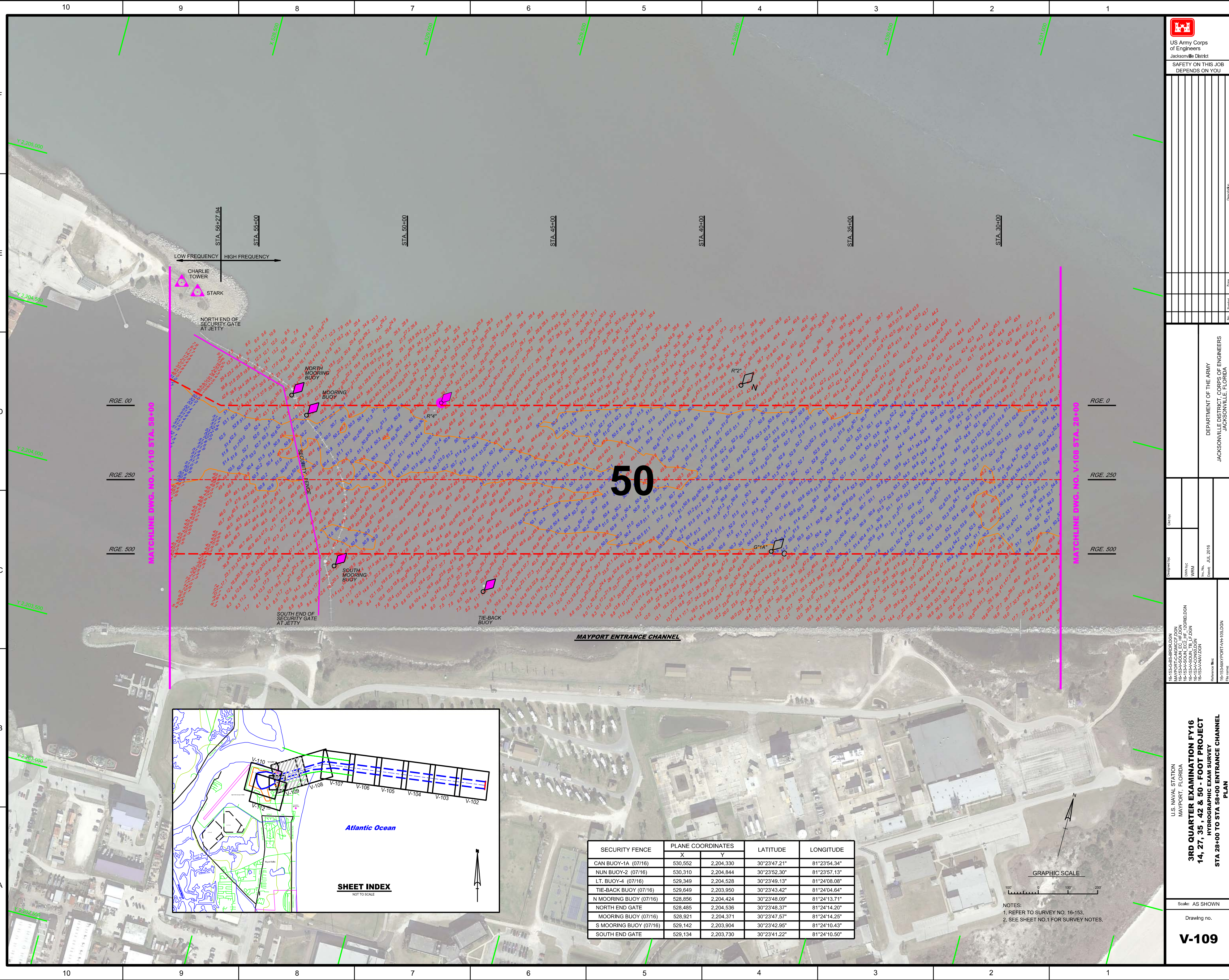
AIDS TO NAVIGATION	PLANE COORDINATES		LATITUDE	LONGITUDE
	X	Y		
R/G BUOY (07/16)	531,749	2,205,290	30°23'56.76"	81°23'40.71"
LT. BUOY-1 (07/16)	532,346	2,204,747	30°23'51.41"	81°23'33.88"



NOTES:
1. REFER TO SURVEY NO. 16-153.
2. SEE SHEET NO.1 FOR SURVEY NOTES.



SHEET INDEX
NOT TO SCALE



SECURITY FENCE	PLANE COORDINATES		LATITUDE	LONGITUDE
	X	Y		
CAN BUOY-1A (07/16)	530,552	2,204,330	30°23'47.21"	81°23'54.34"
NUN BUOY-2 (07/16)	530,310	2,204,844	30°23'52.30"	81°23'57.13"
LT. BUOY-4 (07/16)	529,349	2,204,528	30°23'49.13"	81°24'08.08"
TIE-BACK BUOY (07/16)	529,649	2,203,950	30°23'43.42"	81°24'04.64"
N MOORING BUOY (07/16)	528,856	2,204,424	30°23'48.09"	81°24'13.71"
NORTH END GATE	528,485	2,204,536	30°23'48.37"	81°24'14.20"
MOORING BUOY (07/16)	528,921	2,204,371	30°23'47.57"	81°24'14.25"
S MOORING BUOY (07/16)	529,142	2,203,904	30°23'42.95"	81°24'10.43"
SOUTH END GATE	529,134	2,203,730	30°23'41.22"	81°24'10.50"

NOTES:
1. REFER TO SURVEY NO. 16-153.
2. SEE SHEET NO. 1 FOR SURVEY NOTES.

U.S. NAVAL STATION
MAYPORT, FLORIDA

3RD QUARTER EXAMINATION FY16
14, 27, 35, 42 & 50 - FOOT PROJECT
HYDROGRAPHIC EXAM SURVEY
STA 28+00 TO STA 58+00 ENTRANCE CHANNEL
PLAN

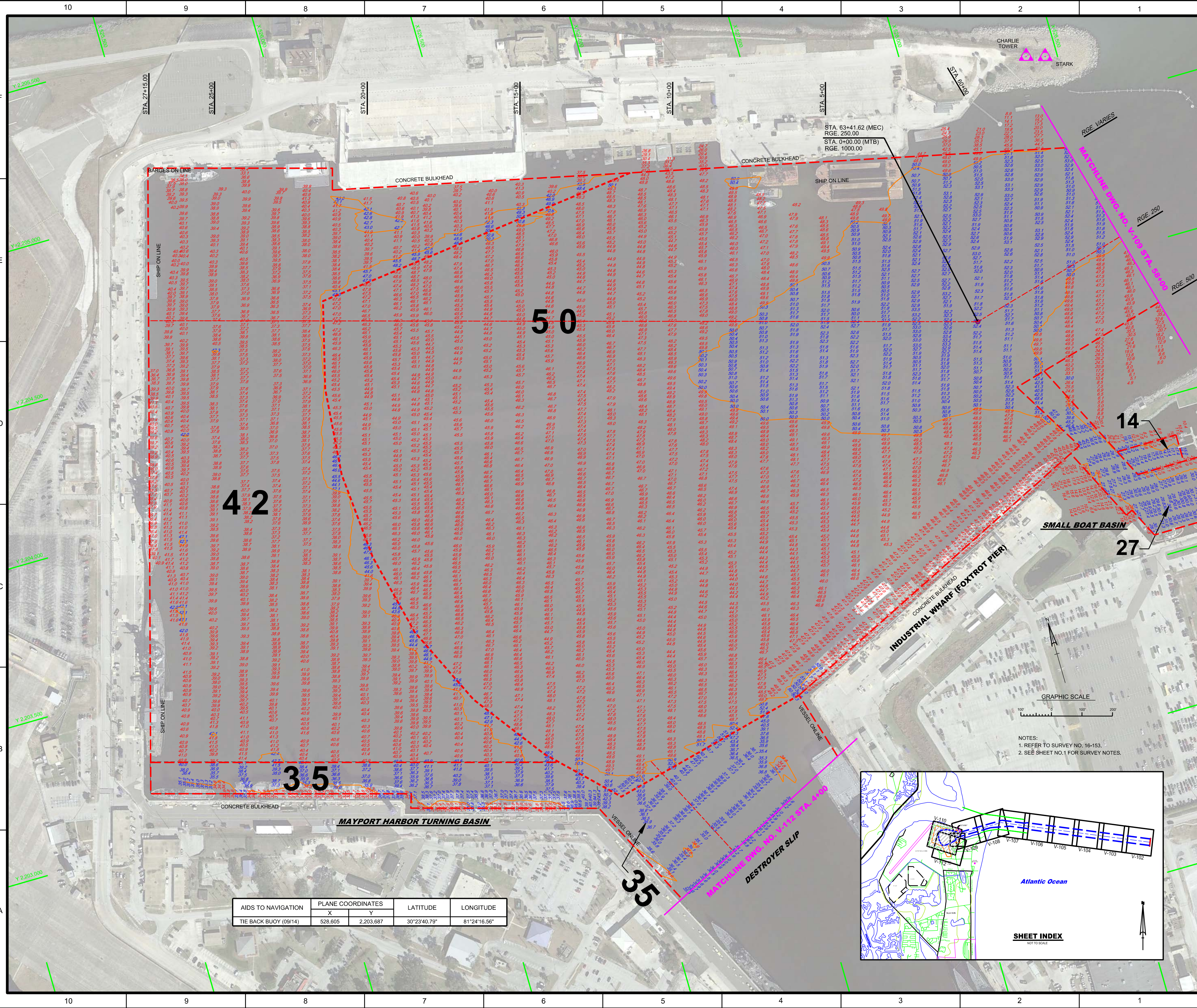
Scale: AS SHOWN

Drawing no.
V-109

Reference files:
16-153A-BR/BLDGN
16-153A-C/INSTR/DGN
16-153A-D/INSTR/DGN
16-153A-E/INSTR/DGN
16-153A-F/INSTR/DGN
16-153A-G/INSTR/DGN
16-153A-H/INSTR/DGN
16-153A-I/INSTR/DGN
16-153A-J/INSTR/DGN
16-153A-K/INSTR/DGN
16-153A-L/INSTR/DGN
16-153A-M/INSTR/DGN
16-153A-N/INSTR/DGN
16-153A-O/INSTR/DGN
16-153A-P/INSTR/DGN
16-153A-Q/INSTR/DGN
16-153A-R/INSTR/DGN
16-153A-S/INSTR/DGN
16-153A-T/INSTR/DGN
16-153A-U/INSTR/DGN
16-153A-V/INSTR/DGN
16-153A-W/INSTR/DGN
16-153A-X/INSTR/DGN
16-153A-Y/INSTR/DGN
16-153A-Z/INSTR/DGN

Department of the Army
Jacksonville District, Corps of Engineers
Jacksonville, Florida

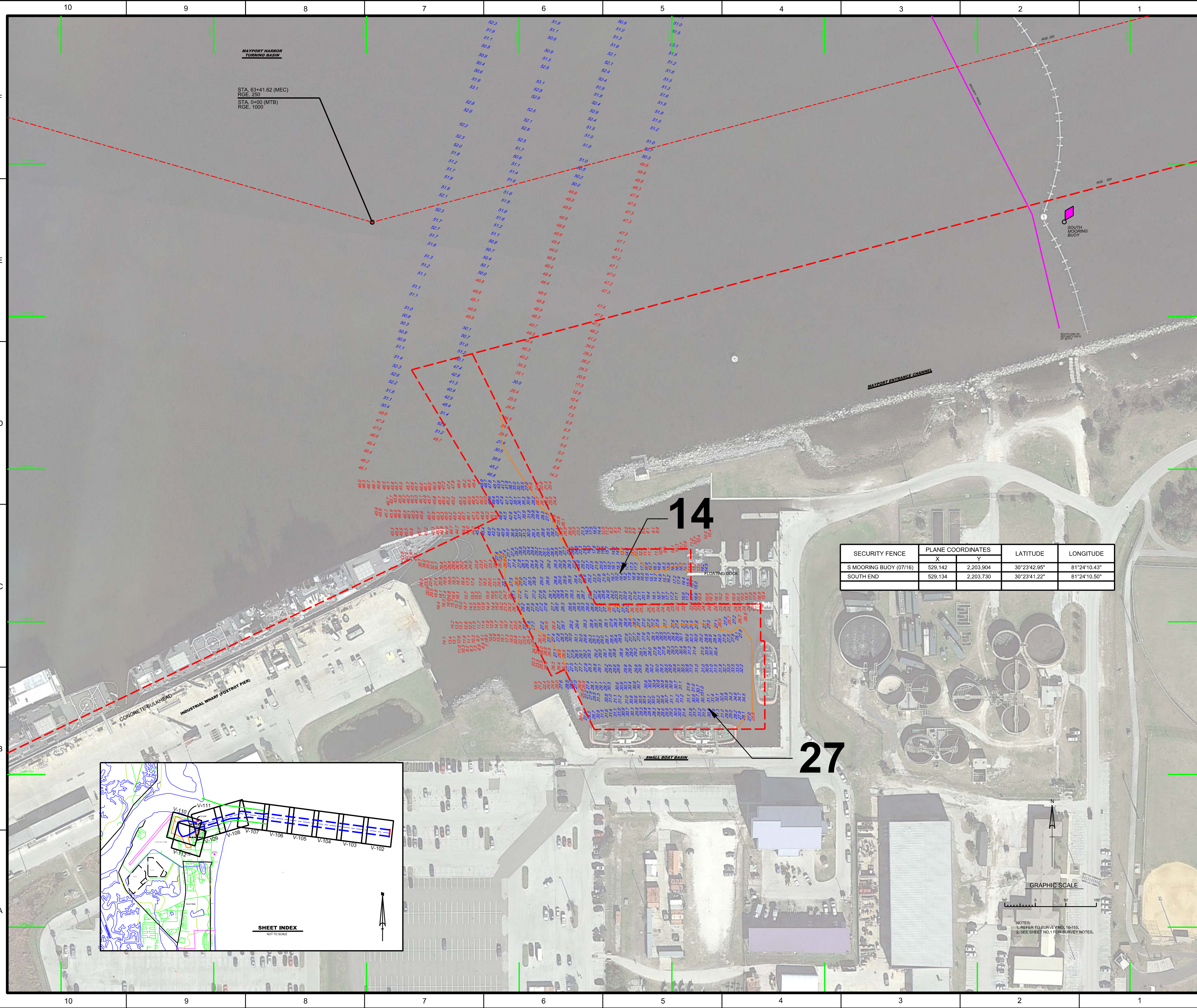
Checked by: [Blank]
Designed by: [Blank]
Drawn by: [Blank]
Reviewed by: [Blank]
Date: JUL 2016



AIDS TO NAVIGATION	PLANE COORDINATES		LATITUDE	LONGITUDE
	X	Y		
TIE BACK BUOY (09/14)	528,605	2,203,687	30°23'40.79"	81°24'16.56"

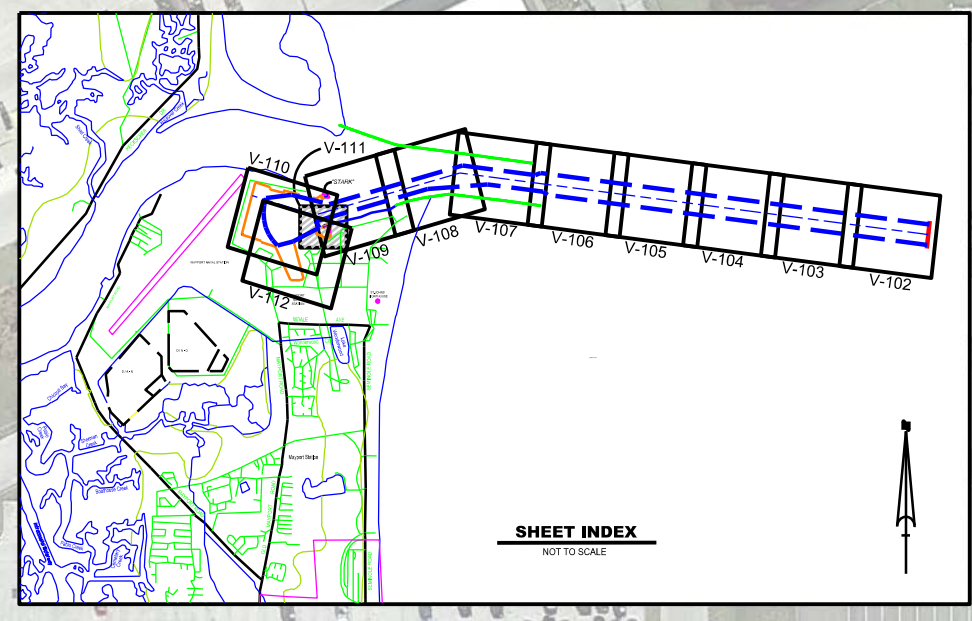
NOTES:
1. REFER TO SURVEY NO. 16-153.
2. SEE SHEET NO.1 FOR SURVEY NOTES.

SHEET INDEX
NOT TO SCALE



MAYPORT HARBOR
TURNING BASIN
STA. 63+41.62 (MEC)
RGE. 250
STA. 0+00 (MTB)
RGE. 1000

SECURITY FENCE	PLANE COORDINATES		LATITUDE	LONGITUDE
	X	Y		
S MOORING BUOY (07/16)	529,142	2,203,904	30°23'42.95"	81°24'10.43"
SOUTH END	529,134	2,203,730	30°23'41.22"	81°24'10.50"



NOTES:
1. REFER TO SURVEY NO. 16-153.
2. SEE SHEET NO.1 FOR SURVEY NOTES.

14

27

50

35

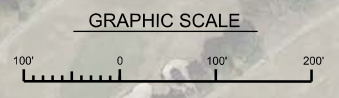
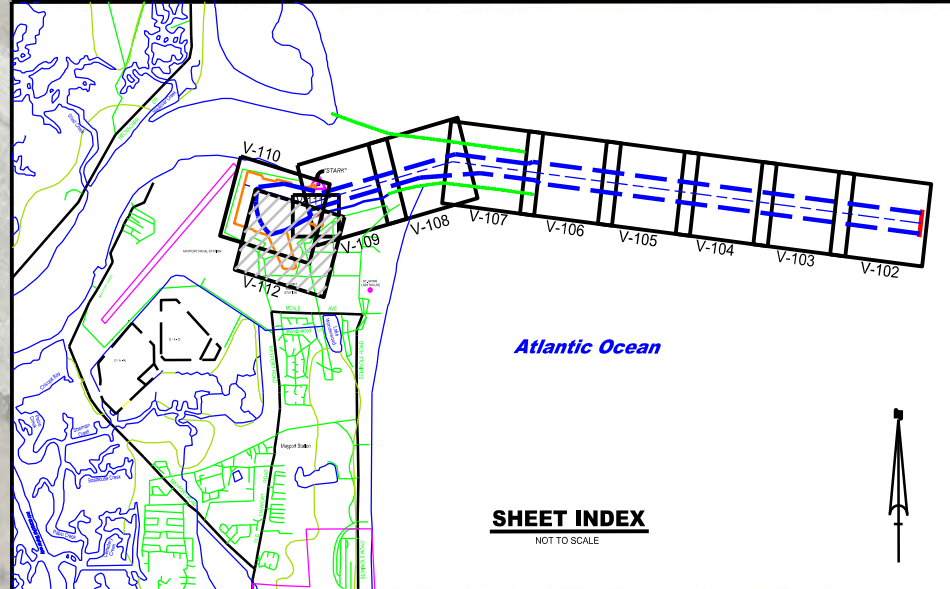
35

MAYPORT HARBOR TURNING BASIN

INDUSTRIAL WHARF
(FOX TROT PIER)

SMALL BOAT BASIN

DESTROYER SLIP



NOTES:
 1. REFER TO SURVEY NO. 16-153.
 2. SEE SHEET NO.1 FOR SURVEY NOTES.

DEPARTMENT OF THE ARMY
 JACKSONVILLE DISTRICT, CORPS OF ENGINEERS
 JACKSONVILLE, FLORIDA

16-153A-08-BR/BLD/EN
 16-153A-08-IND/CTE/EN
 16-153A-08-CON/SE/EN

U.S. NAVAL STATION
 MAYPORT, FLORIDA

**3RD QUARTER EXAMINATION FY16
 14, 27, 35, 42 & 50 - FOOT PROJECT**

HYDROGRAPHIC EXAM SURVEY
 DESTROYER SLIP
 PLAN

Scale: AS SHOWN

Drawing no.

V-112