

# HOMOSSASSA RIVER CITRUS COUNTY, FLORIDA STA. 625+20.62 THRU 632+27.44 PROJECT CONDITION SURVEY FY16

**SURVEY NOTES**

- REFER TO SURVEY NO. 16-120.
  - SOUNDINGS ARE IN FEET AND TENTHS AND REFER TO NOAA'S REPORTED MEAN LOWER LOW WATER (MLLW) OF THE 1983-2001 TIDAL EPOCH.
  - TIDAL REDUCTIONS WERE OBTAINED UTILIZING A REAL-TIME KINEMATIC (RTK) GPS AND REFERENCED TO MLLW UTILIZING A HYPACK KINEMATIC TIDE DATUM (KTD) MODEL. KTD FILE NAME IS: "SPC-FL-WEST-2010-12-07.KTD".
  - ALL ELEVATIONS ARE BELOW THE CHART DATUM UNLESS PRECEDED BY A (+) SIGN.
  - PLANE COORDINATES ARE BASED ON THE TRANSVERSE MERCATOR PROJECTION FOR THE WEST ZONE OF FLORIDA AND REFERENCED TO NORTH AMERICAN DATUM OF 1983 (NAD83).
  - ALL STATIONING REFERS TO THE CENTERLINE OF THE CHANNEL.
  - THIS SURVEY WAS PERFORMED USING REAL-TIME KINEMATIC (RTK) GPS POSITIONING WITH THE FOLLOWING REFERENCE BASE LOCATION:  
REFERENCE BASE LOCATED AT "A MOORE" (PID: PENDING)
  - DEPTHS DEPICTED BY THIS SURVEY ARE REFERENCED TO MLLW, TIDAL EPOCH 1983-2001 AS REPORTED BY THE NATIONAL OCEANIC AND ATMOSPHERIC ADMINISTRATION (NOAA). NOAA'S DATUM MODEL WAS USED AND CALIBRATED TO THE PUBLISHED MLLW HEIGHTS OF THE BENCHMARKS ASSOCIATED WITH THE TIDE GAGE SITES SPECIFIED BELOW:  
NOAA TIDAL STATION 872 7293 USED FOR ALL CUTS. (PID: AL7708)  
VERTICAL MEASUREMENTS WERE MADE USING A ROSS SMARTSOUNDER DUAL-FREQUENCY 28/200 KHZ SINGLE-BEAM TRANSDUCER AND AN EDGE-TECH 6205 COMBINED MULTI-BEAM AND SIDESCAN. ALL SOUNDINGS SHOWN ARE IN HIGH FREQUENCY.
- | VESSEL | DATE OF SURVEY | CUT                           |
|--------|----------------|-------------------------------|
| SB-48  | 10-11 MAY 2016 | STA. 625+20.62 THRU 632+27.44 |
- AIDS TO NAVIGATION WERE LOCATED DURING THIS SURVEY.
  - THE INFORMATION DEPICTED ON THIS MAP REPRESENTS THE RESULTS OF SURVEYS MADE ON THE DATES INDICATED ABOVE AND CAN ONLY BE CONSIDERED AS INDICATING THE GENERAL CONDITIONS AT THAT TIME. THIS CHART IS SOLELY FOR THE DISTRIBUTION OF AVAILABLE DEPTHS AT THE TIME OF THE SURVEY.
  - SURVEY ACCURACY PERFORMANCE STANDARDS, QUALITY CONTROL, AND QUALITY ASSURANCE REQUIREMENTS WERE FOLLOWED DURING THIS SURVEY IN ACCORDANCE WITH USACE EM 1110-2-1003, HYDROGRAPHIC SURVEYING, 30 NOV 13.

LEGEND	
	MONUMENT
	LIGHTED BEACON
	GREEN DAYBEACON
	RED DAYBEACON
	RED LIGHTED BUOY
	GREEN LIGHTED BUOY
	CAN BUOY
	NUN BUOY
	TIDE STAFF
	PROJECT DEPTH

US Army Corps of Engineers  
Jacksonville District  
SAFETY ON THIS JOB  
DEPENDS ON YOU

DEPARTMENT OF THE ARMY  
JACKSONVILLE DISTRICT, CORPS OF ENGINEERS  
JACKSONVILLE, FLORIDA

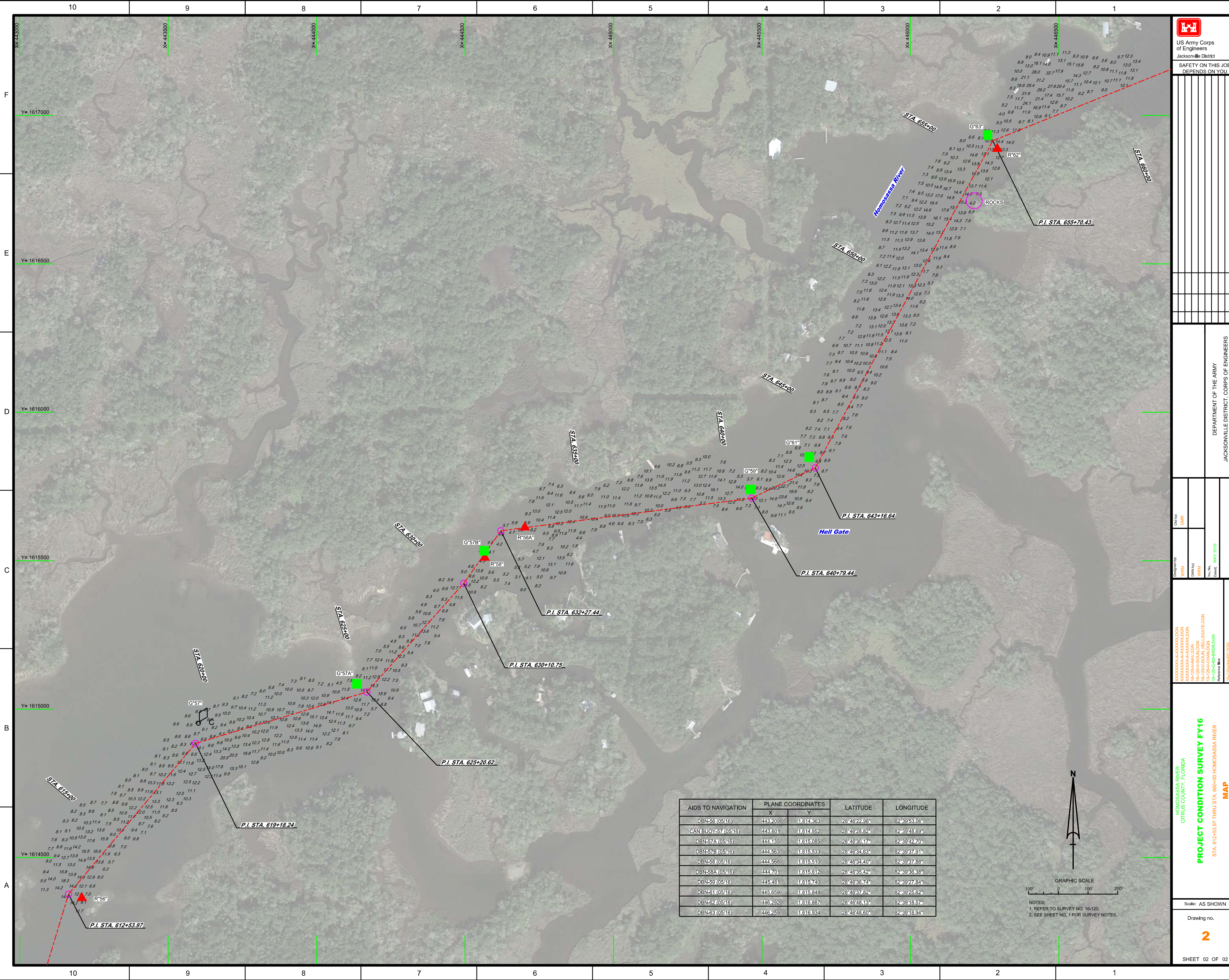
Check by: GHR  
Designed by: WRM  
Drawn by: WRM  
File No: 16-120-CHALDGN  
Date: MAY 2016  
Reference File: 16-120-CHALDGN  
File Name: 16-120-CHALDGN

HOMOSSASSA RIVER  
CITRUS COUNTY, FLORIDA  
**PROJECT CONDITION SURVEY FY16**  
INDEX, LOCATION AND VICINITY  
MAP

Scale: AS SHOWN  
Drawing no. **1**

SHEET 01 OF 02





Checked By: GHR  
Designed By: WRM  
Drawn By: WRM  
File No.: 16-1204-00-00  
Date: MAY 2016

HOMOSSASSA RIVER  
CITRUS COUNTY, FLORIDA  
**PROJECT CONDITION SURVEY FY16**  
STA. 612+53.97 THRU STA. 600+00 HOMOSSASSA RIVER  
MAP

Scale: AS SHOWN  
Drawing no. **2**  
SHEET 02 OF 02

AIDS TO NAVIGATION	PLANE COORDINATES		LATITUDE	LONGITUDE
	X	Y		
DBN-59 (0516)	443,209	1,614,363	28°46'22.98"	82°39'53.06"
CAN BUOY-57 (0516)	443,601	1,614,952	28°46'28.82"	82°39'48.69"
DBN-57A (0516)	444,135	1,615,085	28°46'30.17"	82°39'42.70"
DBN-57B (0516)	444,563	1,615,533	28°46'34.63"	82°39'37.91"
DBN-58 (0516)	444,566	1,615,510	28°46'34.40"	82°39'37.88"
DBN-58A (0516)	444,701	1,615,612	28°46'35.32"	82°39'36.38"
DBN-59 (0516)	445,461	1,615,740	28°46'36.74"	82°39'27.84"
DBN-51 (0516)	445,659	1,615,848	28°46'37.82"	82°39'25.62"
DBN-62 (0516)	446,292	1,616,887	28°46'48.13"	82°39'18.57"
DBN-63 (0516)	446,259	1,616,934	28°46'48.60"	82°39'18.94"

NOTES:  
1. REFER TO SURVEY NO. 16-120.  
2. SEE SHEET NO. 1 FOR SURVEY NOTES.