

ST. JOHNS RIVER DUVAL COUNTY, FLORIDA BUOY-80 TO MAIN STREET BRIDGE EXAMINATION SURVEY FY16

SURVEY NOTES

- REFER TO SURVEY NO. 16-105.
 - SOUNDINGS ARE IN FEET AND TENTHS AND REFER TO NOAA'S REPORTED MEAN LOWER LOW WATER (MLLW) OF THE 1983-2001 TIDAL EPOCH.
 - TIDAL REDUCTIONS WERE OBTAINED UTILIZING A REAL-TIME KINEMATIC (RTK) GPS AND REFERENCED TO MLLW UTILIZING A HYPACK KINEMATIC TIDE DATUM (KT) MODEL. KTD FILE NAME IS: "CAMDENG-NASSAU-DUVAL-STJOHNS-FLAGLER_01FEB2011.KTD".
 - ALL ELEVATIONS ARE BELOW THE CHART DATUM UNLESS PRECEDED BY A (+) SIGN.
 - PLANE COORDINATES ARE BASED ON THE TRANSVERSE MERCATOR PROJECTION FOR THE EAST ZONE OF FLORIDA AND REFERENCED TO NORTH AMERICAN DATUM OF 1983 (NAD83).
 - ALL STATIONING REFERS TO THE CENTERLINE OF THE CHANNEL.
 - THIS SURVEY WAS PERFORMED USING REAL-TIME KINEMATIC (RTK) GPS POSITIONING WITH THE FOLLOWING REFERENCE BASE LOCATION:
REFERENCE BASE LOCATED AT "872 0242 A" (PID: BBB231")
 - DEPTHS DEPICTED BY THIS SURVEY ARE REFERENCED TO MLLW, TIDAL EPOCH 1983-2001 AS REPORTED BY THE NATIONAL OCEANIC AND ATMOSPHERIC ADMINISTRATION (NOAA). NOAA'S VDATUM MODEL WAS USED AND CALIBRATED TO THE PUBLISHED MLLW HEIGHTS OF THE BENCH-MARKS ASSOCIATED WITH THE TIDE GAGE SITES SPECIFIED BELOW:

NOAA TIDAL STATION 872-0242 A USED FOR ALL CUTS. (PID: BBB231)

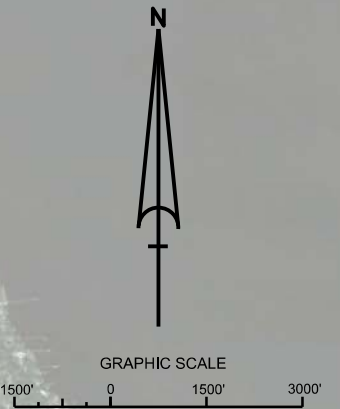
VERTICAL MEASUREMENTS WERE MADE USING A R2SONIC 2024 MULTI-BEAM SENSOR OPERATING AT 240 KHZ (HIGH FREQUENCY). ALL SOUNDINGS SHOWN ARE IN HIGH FREQUENCY.
- | VESSEL | DATE OF SURVEY | CUT |
|--------|----------------|-------------------------|
| SB-46 | 09 MAY 2016 | ST JOHNS RIVER EAST |
| SB-46 | 10 MAY 2016 | ST JOHNS RIVER EASTWEST |
- AIDS TO NAVIGATION WERE LOCATED DURING THIS SURVEY.
 - THE INFORMATION DEPICTED ON THIS MAP REPRESENTS THE RESULTS OF SURVEYS MADE ON THE DATES INDICATED ABOVE AND CAN ONLY BE CONSIDERED AS INDICATING THE GENERAL CONDITIONS AT THAT TIME. THIS CHART IS SOLELY FOR THE DISTRIBUTION OF AVAILABLE DEPTHS AT THE TIME OF THE SURVEY.
 - SURVEY ACCURACY PERFORMANCE STANDARDS, QUALITY CONTROL AND QUALITY ASSURANCE REQUIREMENTS WERE FOLLOWED DURING THIS SURVEY IN ACCORDANCE WITH USACE EM 1110-2-1003, HYDROGRAPHIC SURVEYING, 30 NOV 13.

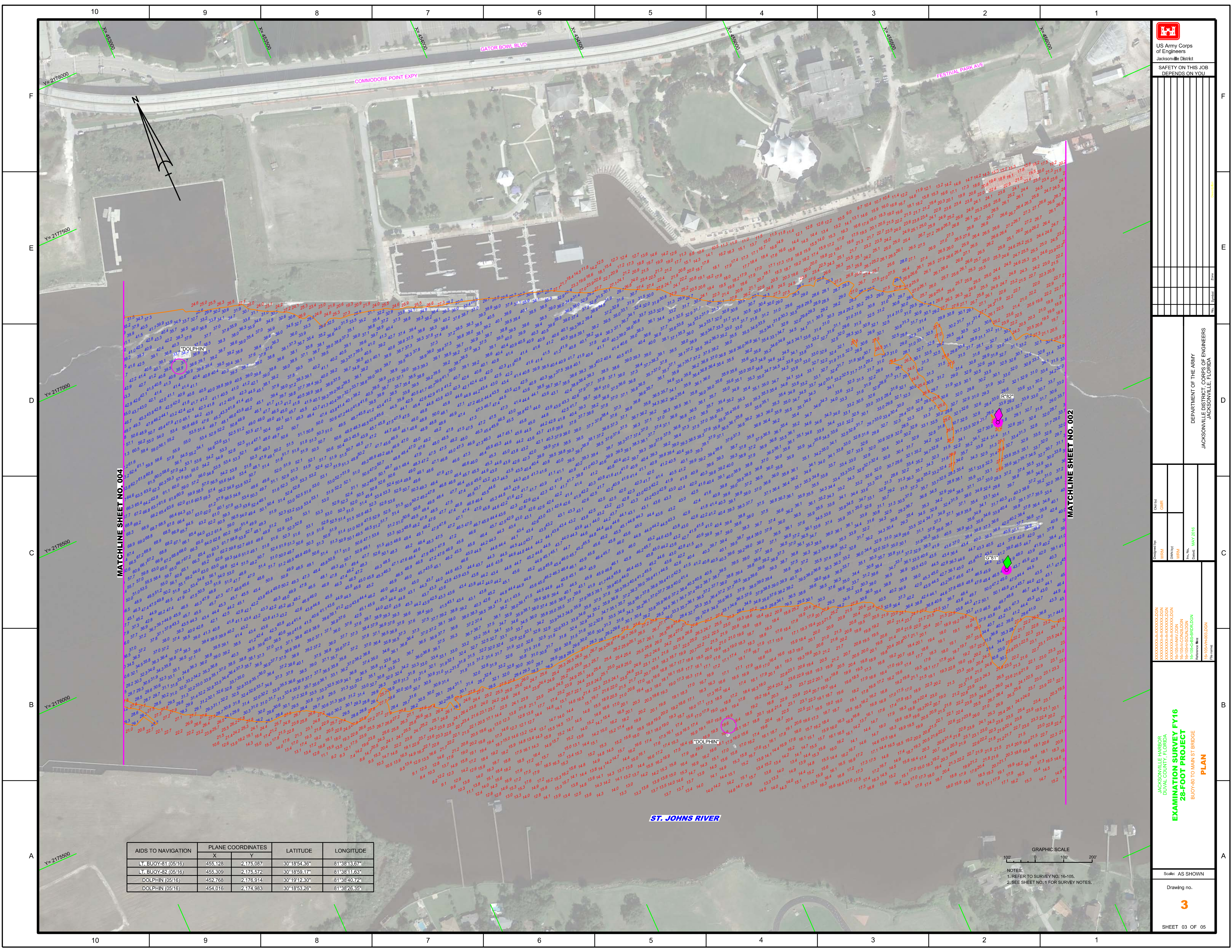
LEGEND	
	MONUMENT
	LIGHTED BEACON
	GREEN DAYBEACON
	RED DAYBEACON
	RED LIGHTED BUOY
	GREEN LIGHTED BUOY
	CAN BUOY
	NUN BUOY
	TIDE STAFF
	PROJECT DEPTH

US Army Corps of Engineers
Jacksonville District

SAFETY ON THIS JOB
DEPENDS ON YOU

	DEPARTMENT OF THE ARMY JACKSONVILLE DISTRICT, CORPS OF ENGINEERS JACKSONVILLE, FLORIDA
	Drawn by: GHR Checked by: GHR Date: MAY 2016
	Project: JAX08B (R2) MAR2013_NA08B34RD.DGN File Name: 16-105-GS-BR01.DGN Reference File: 16-105A-H01.DGN
JACKSONVILLE HARBOR DUVAL COUNTY, FLORIDA EXAMINATION SURVEY FY16 28-FOOT PROJECT INDEX, LOCATION AND VICINITY MAP	
Scale: AS SHOWN Drawing no. 1	
SHEET 01 OF 05	



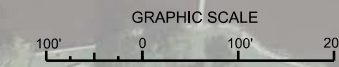


MATCHLINE SHEET NO. 004


MATCHLINE SHEET NO. 002

AIDS TO NAVIGATION	PLANE COORDINATES		LATITUDE	LONGITUDE
	X	Y		
LT. BUOY-81 (05/16)	455,128	2,175,087	30°18'54.36"	81°38'13.67"
LT. BUOY-82 (05/16)	455,309	2,175,572	30°18'59.17"	81°38'11.63"
DOLPHIN (05/16)	452,768	2,176,914	30°19'12.30"	81°38'40.72"
DOLPHIN (05/16)	454,016	2,174,983	30°18'53.26"	81°38'26.35"

ST. JOHNS RIVER



NOTES:
 1. REFER TO SURVEY NO. 16-105.
 2. SEE SHEET NO. 1 FOR SURVEY NOTES.



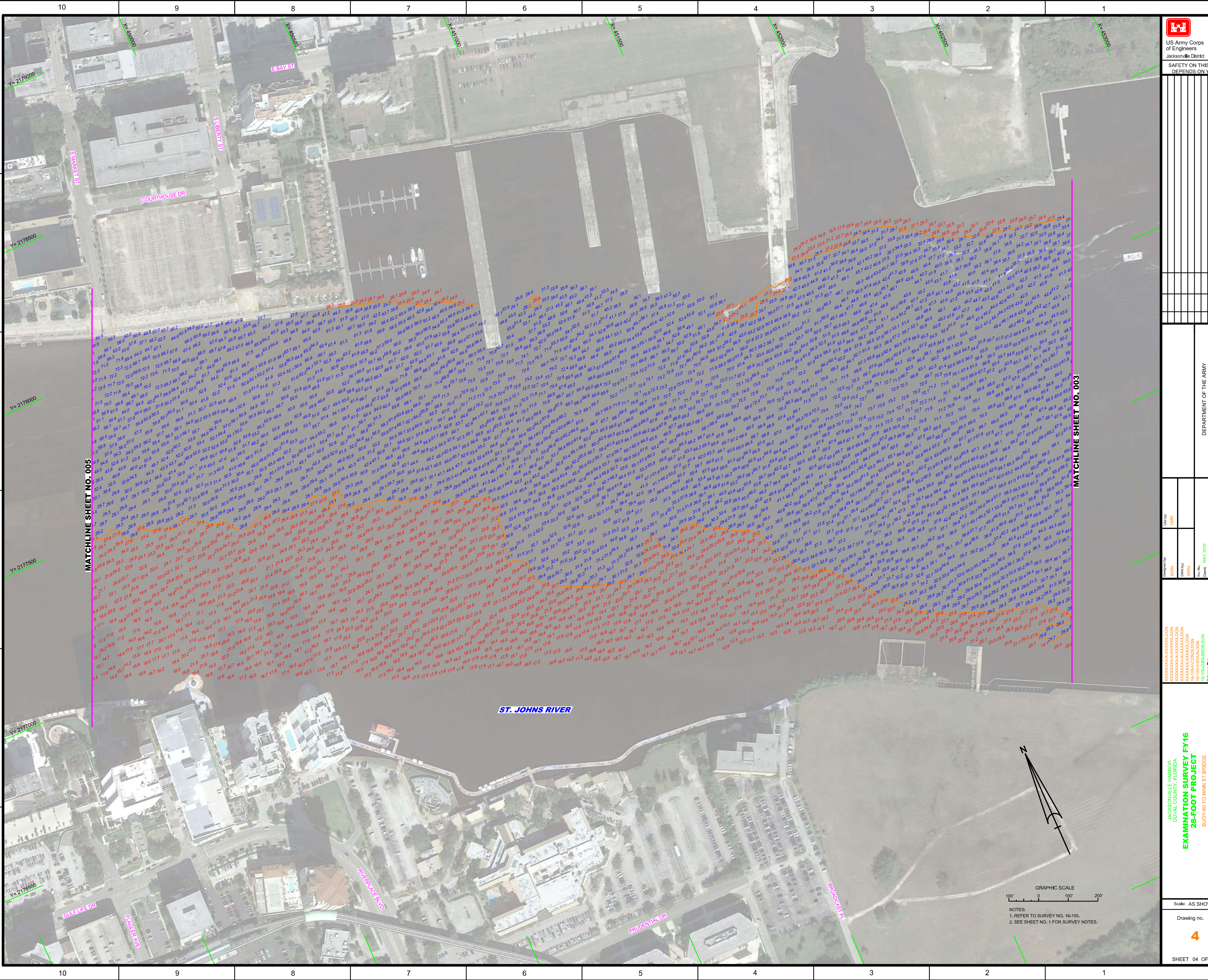
US Army Corps
of Engineers
Jacksonville District
SAFETY ON THIS JOB
DEPENDS ON YOU

DEPARTMENT OF THE ARMY
JACKSONVILLE DISTRICT
JACKSONVILLE, FLORIDA

Examined By: **GHM**
 Drawn By: **WPM**
 Check By: **WPM**
 Date: **MAY 2016**

JACKSONVILLE HARBOR
DUVAL COUNTY, FLORIDA
EXAMINATION SURVEY FY16
28-FOOT PROJECT
BLUOY-80 TO MAIN ST BRIDGE
PLAN

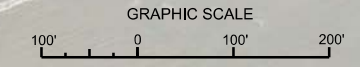
Scale: AS SHOWN
 Drawing no. **3**
 SHEET 03 OF 05



MATCHLINE SHEET NO. 005

MATCHLINE SHEET NO. 003

ST. JOHNS RIVER



NOTES:
1. REFER TO SURVEY NO. 16-105.
2. SEE SHEET NO. 1 FOR SURVEY NOTES.

