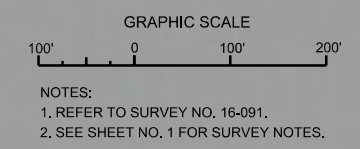
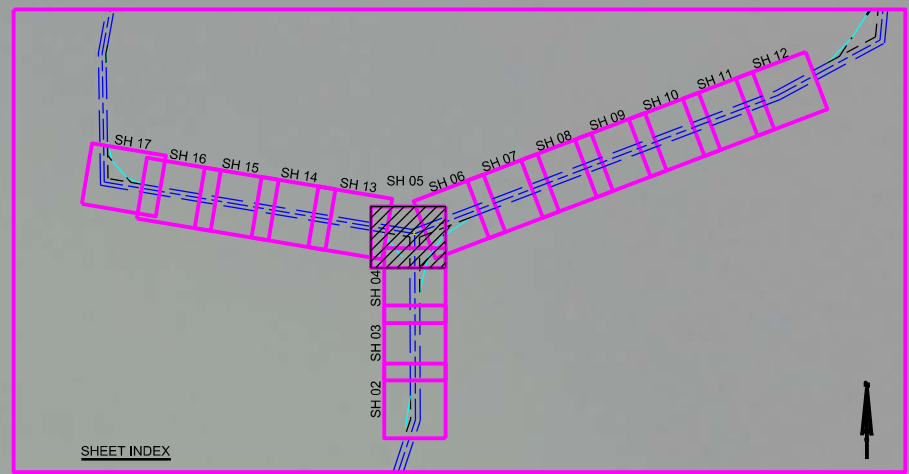


AIDS TO NAVIGATION	PLANE COORDINATES		LATITUDE	LONGITUDE
	X	Y		
BUOY-G (12/15)	486937	1254724	27°47'04.25"	82°31'24.20"
BUOY-G (12/15)	485290	1254516	27°47'04.12"	82°31'24.53"

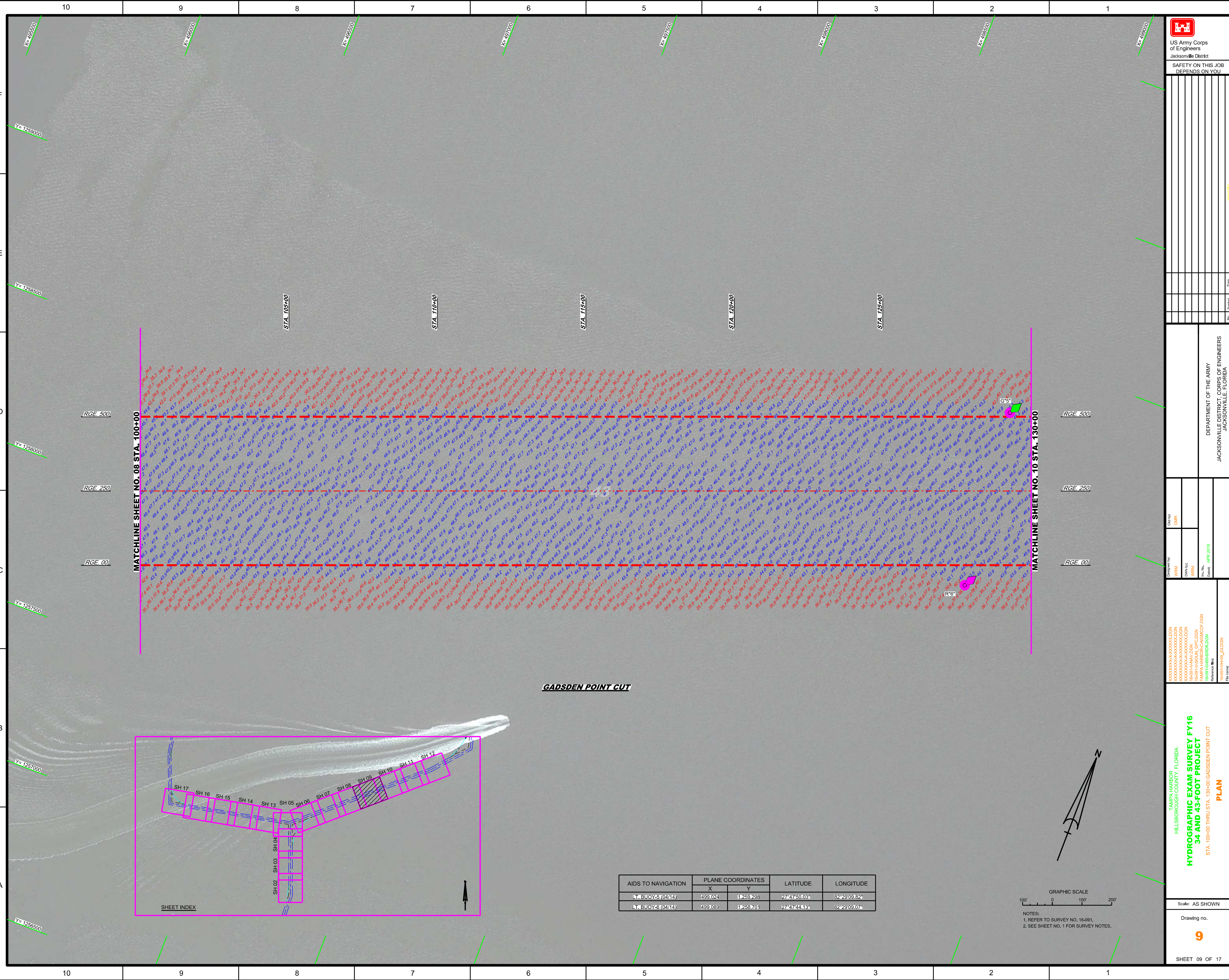
US Army Corps of Engineers
 Jacksonville District
 SAFETY ON THIS JOB
 DEPENDS ON YOU

Designed by: WRM	Checked by: GHR
Drawn by: WRM	Date: APR 2016

TAMPABAY COUNTY, FLORIDA
 HILLSBOROUGH COUNTY, FLORIDA
HYDROGRAPHIC EXAM SURVEY FY16
34 AND 43-FOOT PROJECT
 STA. 85+00 THRU STA. 96+48 CUT-F (TB), STA. 0+00 THRU STA. 19+00 CUT-G (TB), & STA. 0+00 THRU STA. 100+00 GADSDEN POINT CUT
PLAN

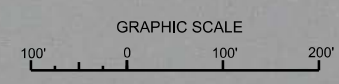


NOTES:
 1. REFER TO SURVEY NO. 16-091.
 2. SEE SHEET NO. 1 FOR SURVEY NOTES.

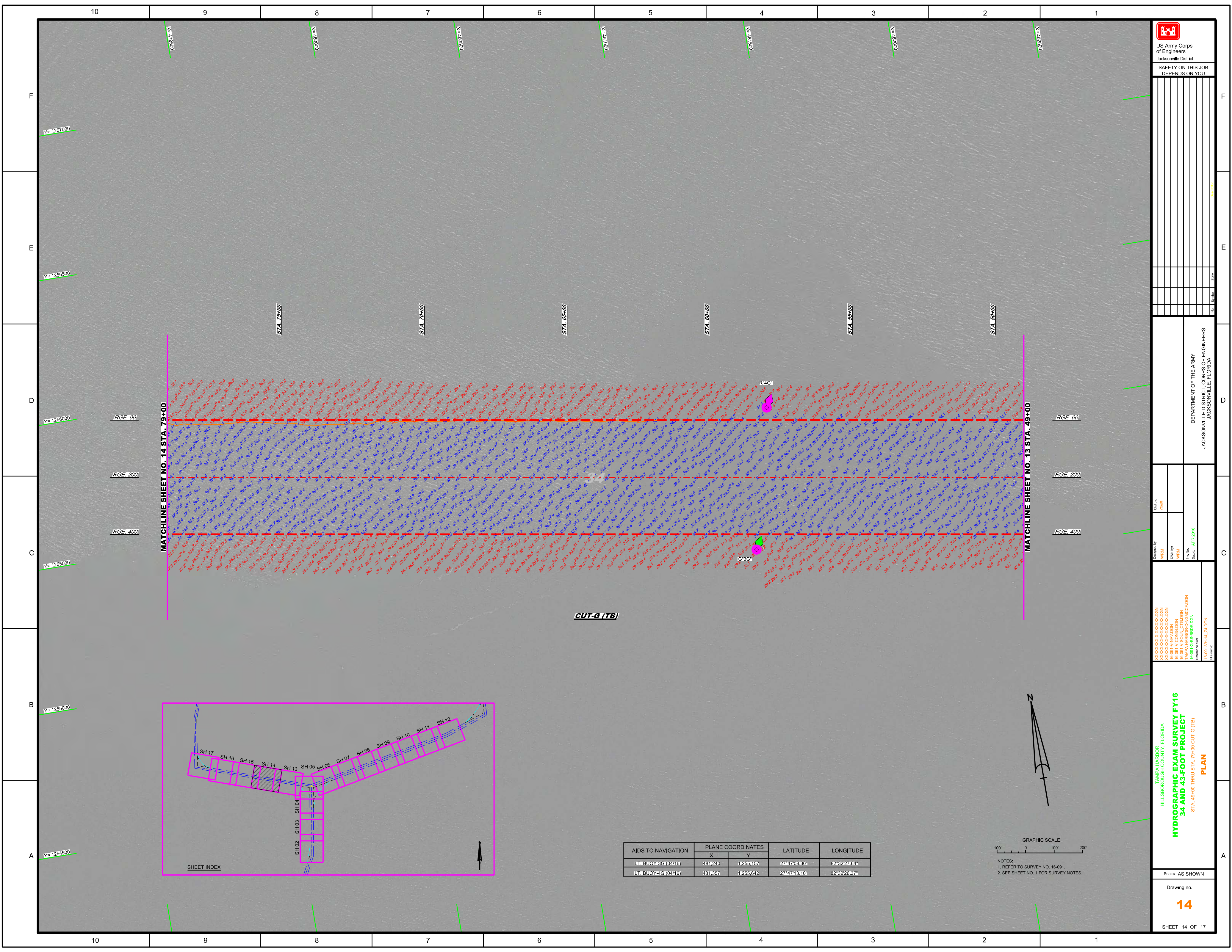



GADSDEN POINT CUT

AIDS TO NAVIGATION	PLANE COORDINATES		LATITUDE	LONGITUDE
	X	Y		
Lt. BUOY-5 (0414)	499,024	1259,298	27°47'50.03"	82°29'09.82"
Lt. BUOY-6 (0414)	499,089	1258,701	27°47'44.13"	82°29'09.07"



NOTES:
 1. REFER TO SURVEY NO. 16-091,
 2. SEE SHEET NO. 1 FOR SURVEY NOTES.





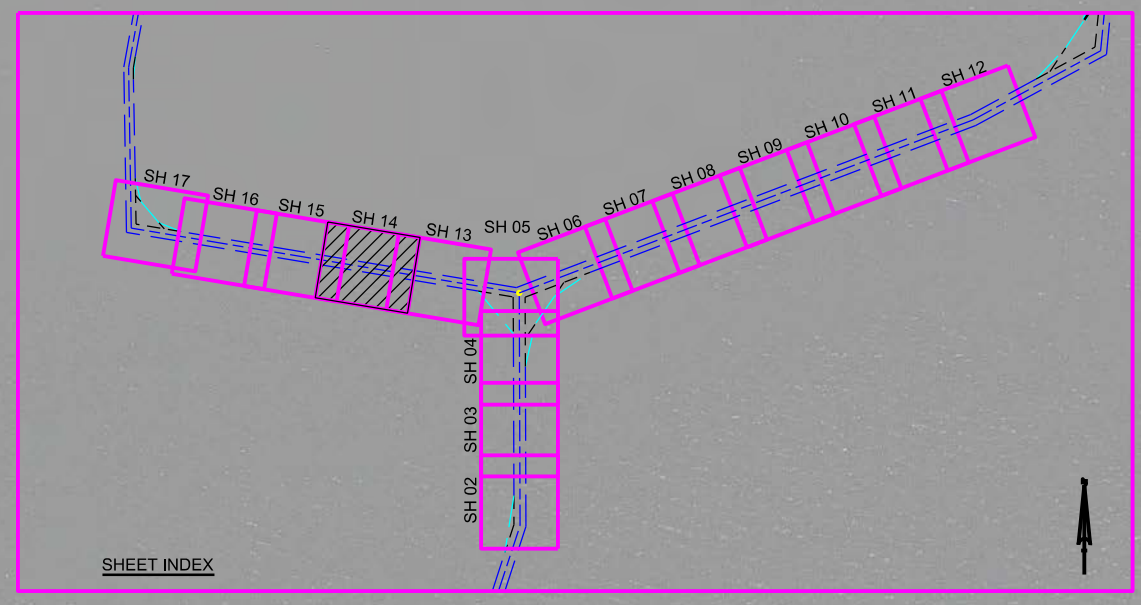
 US Army Corps of Engineers
 Jacksonville District
 SAFETY ON THIS JOB
 DEPENDS ON YOU

DEPARTMENT OF THE ARMY
 JACKSONVILLE DISTRICT, CORPS OF ENGINEERS
 JACKSONVILLE, FLORIDA

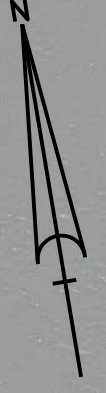
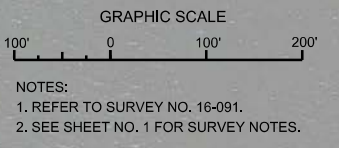
Drawn by: GHR
 Checked by: GHR
 Date: APR 2016

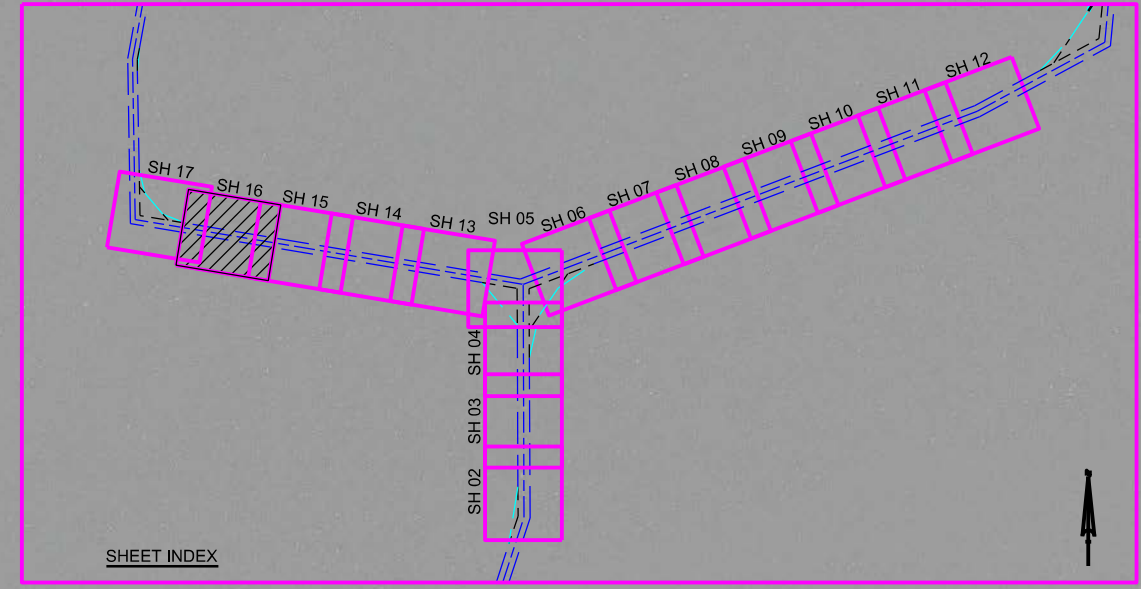
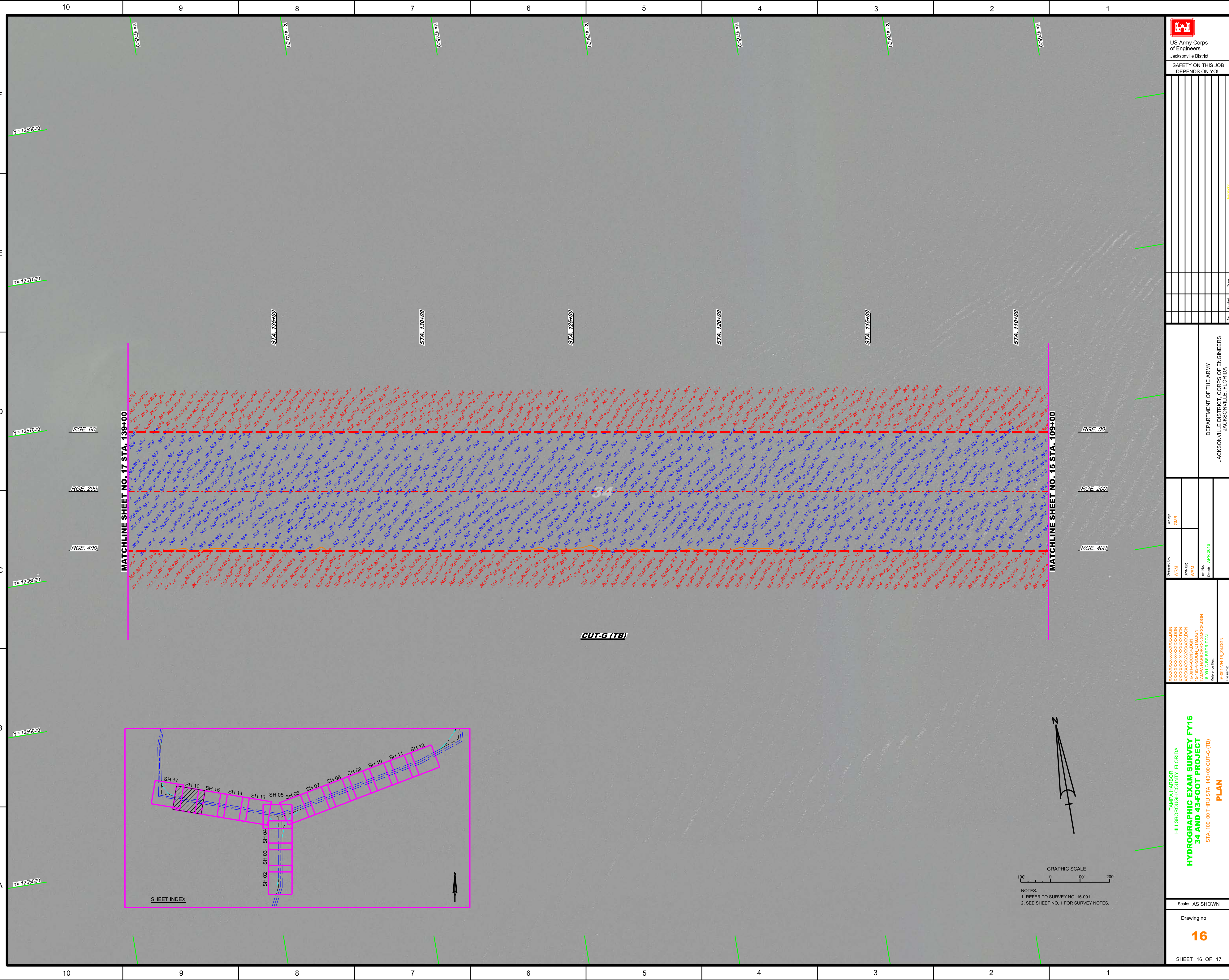
TAMPA HARBOR
 HILLSBOROUGH COUNTY, FLORIDA
HYDROGRAPHIC EXAM SURVEY FY16
34 AND 43-FOOT PROJECT
 STA. 49+00 THRU STA. 79+00 CUT-G (TB)
PLAN

Scale: AS SHOWN
 Drawing no.
14
 SHEET 14 OF 17

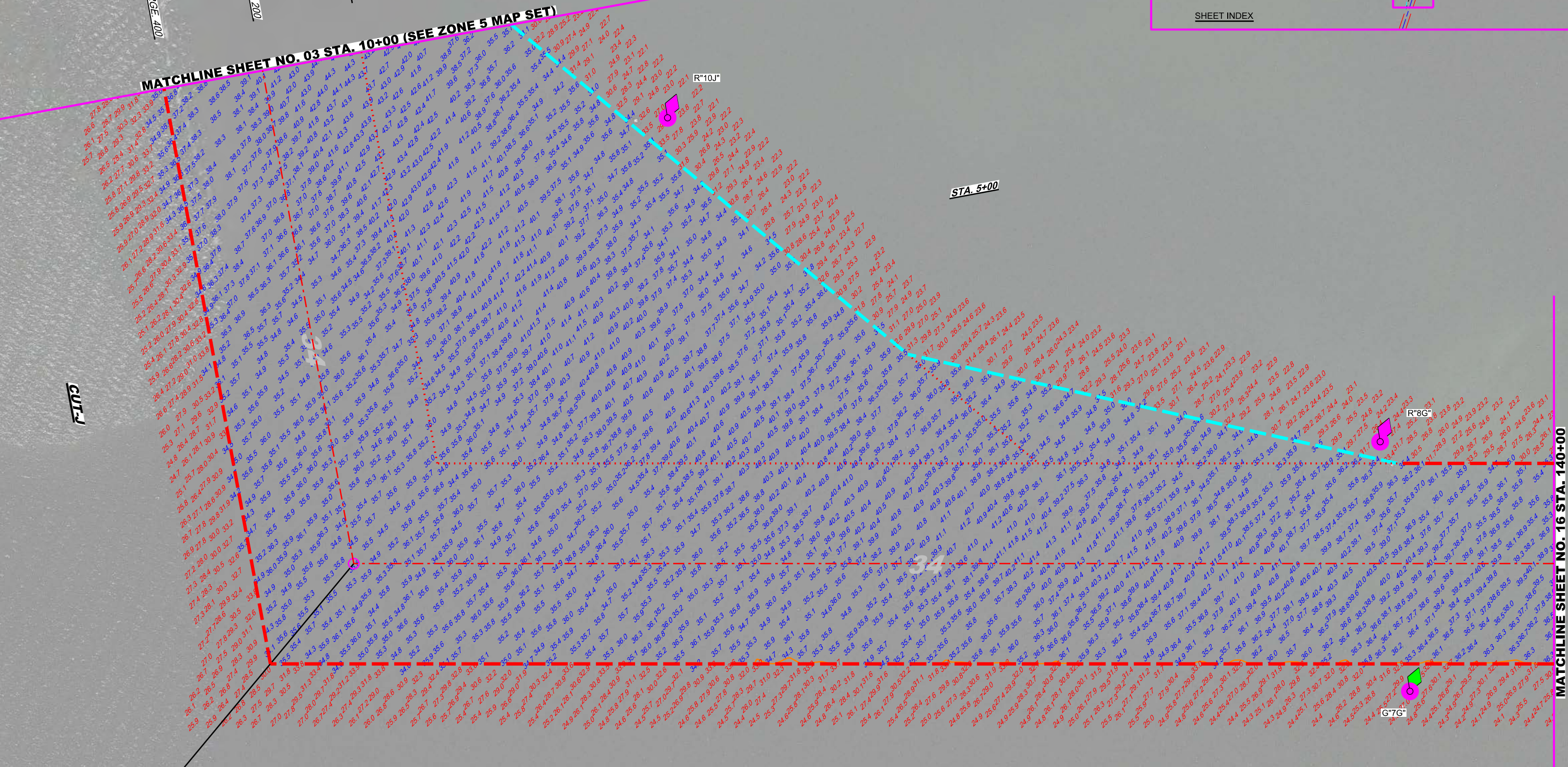
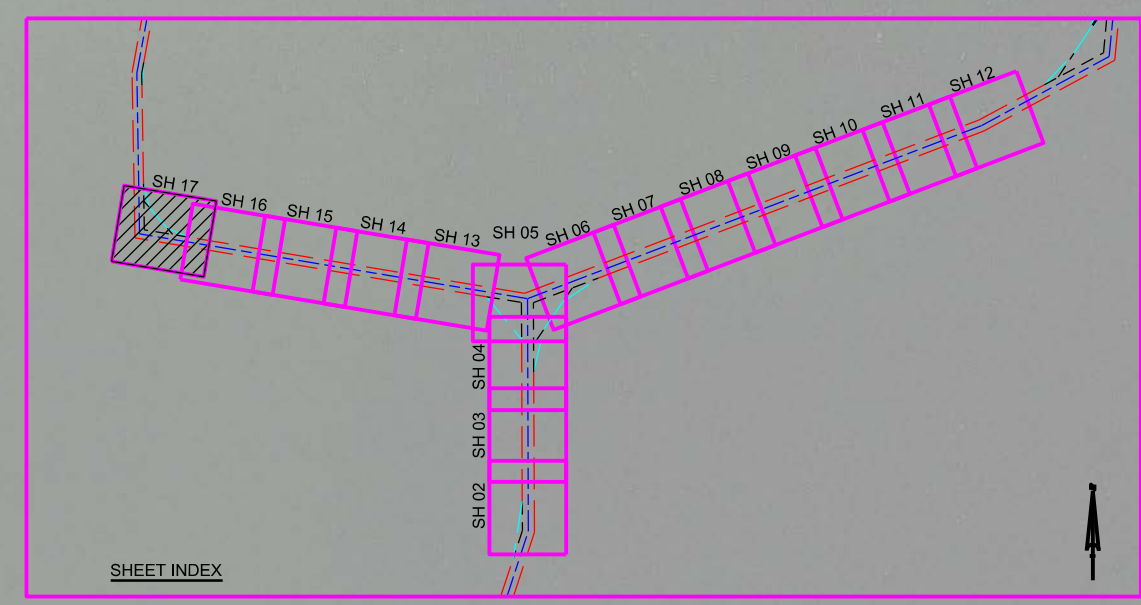


AIDS TO NAVIGATION	PLANE COORDINATES		LATITUDE	LONGITUDE
	X	Y		
LT. BUOY-3G (0416)	481240	1255157	27°47'08.30"	82°32'27.64"
LT. BUOY-2G (0416)	481357	1255142	27°47'48.10"	82°32'26.87"



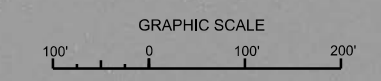


GRAPHIC SCALE
100' 0 100' 200'
NOTES:
1. REFER TO SURVEY NO. 16-091.
2. SEE SHEET NO. 1 FOR SURVEY NOTES.



P.I. STA. 163+92.81 CUT-G
P.I. STA. 0+00 CUT-J

AIDS TO NAVIGATION	PLANE COORDINATES		LATITUDE	LONGITUDE
	X	Y		
LT BUOY-7G (0416)	472495	1256538	27°47'21.70"	82°24'10.52"
LT BUOY-8G (0416)	472492	1257049	27°47'28.66"	82°24'10.29"
LT BUOY-10J (0416)	474633	1257920	27°47'35.23"	82°24'14.76"



NOTES:
1. REFER TO SURVEY NO. 16-091.
2. SEE SHEET NO. 1 FOR SURVEY NOTES.

DEPARTMENT OF THE ARMY
JACKSONVILLE DISTRICT, CORPS OF ENGINEERS
JACKSONVILLE, FLORIDA

Designed by: WRM
Checked by: GHR
Drawn by: WRM
Reference: TAMPA HARBOR-CC-SMCCP-DGN
Reference: 16-091-HY-17_24-DGN

TAMPA HARBOR
HILLSBOROUGH COUNTY, FLORIDA
HYDROGRAPHIC EXAM SURVEY FY16
34 AND 43-FOOT PROJECT
STA. 140+00 CUT-G (TB) THRU STA. 10+00 CUT-J
PLAN

Scale: AS SHOWN
Drawing no.
17
SHEET 17 OF 17