

IWW - JACKSONVILLE TO MIAMI CUTS SJ-59 THRU SJ-61 ST JOHNS COUNTY, FL 10 AND 12-FOOT PROJECT EXAMINATION SURVEY FY16

SURVEY NOTES

- REFER TO SURVEY NO. 16-050.
- SOUNDINGS ARE IN FEET AND TENTHS AND REFER TO NOAA'S REPORTED MEAN LOWER LOW WATER (MLLW) OF THE 1983-2001 TIDAL EPOCH.
- TIDAL REDUCTIONS WERE OBTAINED UTILIZING A REAL-TIME KINEMATIC (RTK) GPS AND REFERENCED TO MLLW UTILIZING A HYPACK KINEMATIC TIDE DATUM (KTD) MODEL. KTD FILE NAME IS: "CAMDENGANASSAU-DUVAL-STJOHNS-FLAGLER-01FEB2011.KTD".
- ALL ELEVATIONS ARE BELOW THE CHART DATUM UNLESS PRECEDED BY A (+) SIGN.
- PLANE COORDINATES ARE BASED ON THE TRANSVERSE MERCATOR PROJECTION FOR THE EAST ZONE OF FLORIDA AND REFERENCED TO NORTH AMERICAN DATUM OF 1983 (NAD83).
- ALL STATIONING REFERS TO THE CENTERLINE OF THE CHANNEL.
- THIS SURVEY WAS PERFORMED USING REAL-TIME KINEMATIC (RTK) GPS POSITIONING WITH THE FOLLOWING REFERENCE BASE LOCATIONS:
REFERENCE BASE LOCATED AT "IWSJ-224" (PID: BBCD52)
- DEPTHS DEPICTED BY THIS SURVEY ARE REFERENCED TO MLLW, TIDAL EPOCH 1983-2001 AS REPORTED BY THE NATIONAL OCEANIC AND ATMOSPHERIC ADMINISTRATION (NOAA). NOAA'S DATUM MODEL WAS USED AND CALIBRATED TO THE PUBLISHED MLLW HEIGHTS OF THE BENCHMARKS ASSOCIATED WITH THE TIDE GAGE SITES SPECIFIED BELOW:
NOAA TIDAL STATION 872-0686, TIDAL 1 USED FOR CUTS SJ-59 THRU SJ-61 (PID: AQ1557)

LEGEND	
	MONUMENT
	LIGHTED BEACON
	GREEN DAYBEACON
	RED DAYBEACON
	RED LIGHTED BUOY
	GREEN LIGHTED BUOY
	CAN BUOY
	NUN BUOY
	TIDE STAFF
	PROJECT DEPTH

VESSEL	DATE OF SURVEY	CUT
SB-48	17 FEB 2016	SJ-59 THRU SJ-61

9. AIDS TO NAVIGATION WERE LOCATED DURING THIS SURVEY.

10. THE INFORMATION DEPICTED ON THIS MAP REPRESENTS THE RESULTS OF SURVEYS MADE ON THE DATES INDICATED ABOVE AND CAN ONLY BE CONSIDERED AS INDICATING THE GENERAL CONDITIONS AT THAT TIME. THIS CHART IS SOLELY FOR THE DISTRIBUTION OF AVAILABLE DEPTHS AT THE TIME OF THE SURVEY.

11. SURVEY ACCURACY PERFORMANCE STANDARDS, QUALITY CONTROL, AND QUALITY ASSURANCE REQUIREMENTS WERE FOLLOWED DURING THIS SURVEY IN ACCORDANCE WITH USACE EM 1110-2-1003, HYDROGRAPHIC SURVEYING, 30 NOV 13.

US Army Corps of Engineers
Jacksonville District

SAFETY ON THIS JOB DEPENDS ON YOU

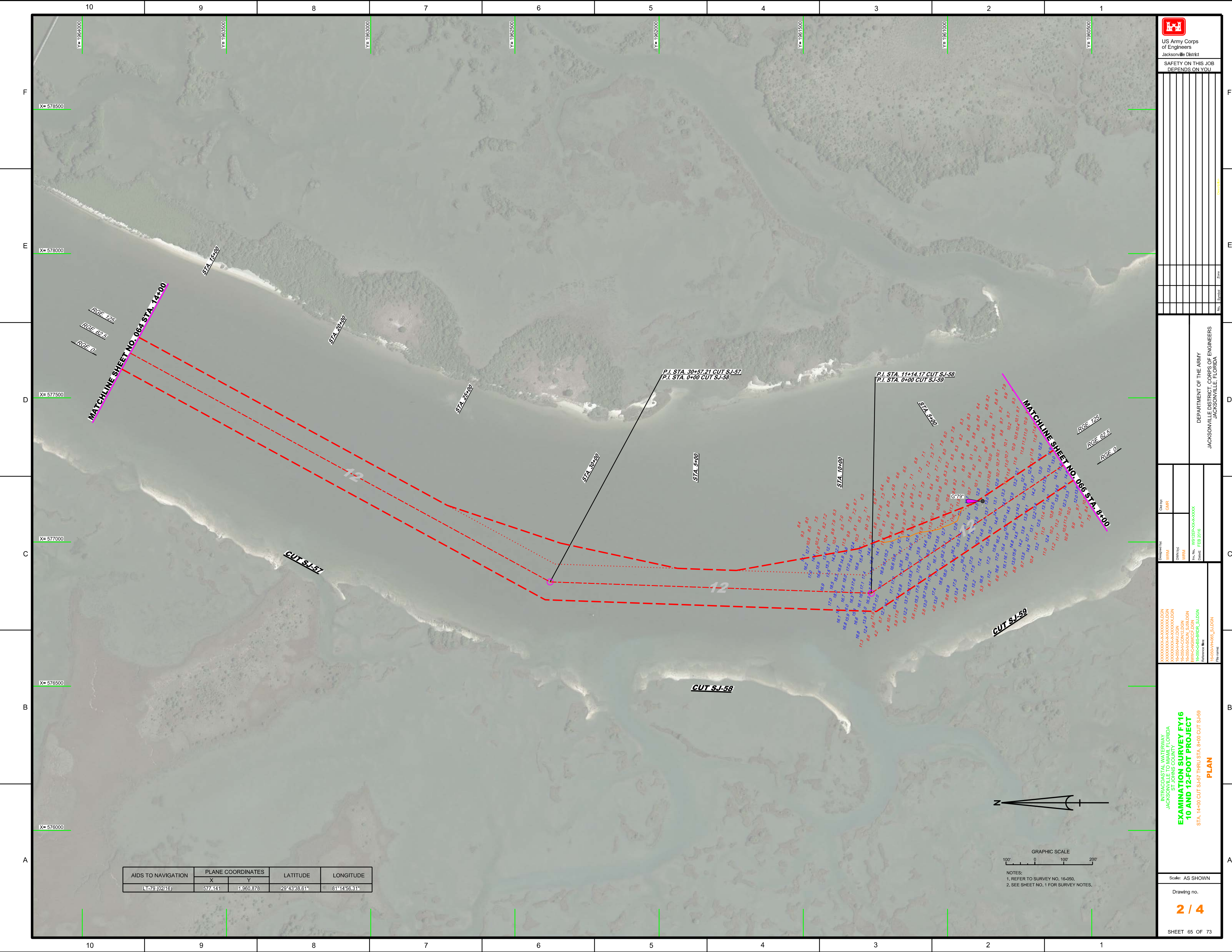
DEPARTMENT OF THE ARMY
JACKSONVILLE DISTRICT, CORPS OF ENGINEERS
JACKSONVILLE, FLORIDA

Drawn by: [Blank]
Checked by: [Blank]
Designed by: [Blank]
Reviewed by: [Blank]
Scale: AS SHOWN

**EXAMINATION SURVEY FY16
10 AND 12-FOOT PROJECT
INDEX, LOCATION AND VICINITY
MAP**

Drawing no. 1 / 4

SHEET 01 OF 73



US Army Corps of Engineers
 Jacksonville District

SAFETY ON THIS JOB
 DEPENDS ON YOU

DEPARTMENT OF THE ARMY
 JACKSONVILLE DISTRICT, CORPS OF ENGINEERS
 JACKSONVILLE, FLORIDA

AIDS TO NAVIGATION	PLANE COORDINATES		LATITUDE	LONGITUDE
	X	Y		
LT-79 (0216)	577,141	1,960,878	29°43'38.61"	81°14'56.31"

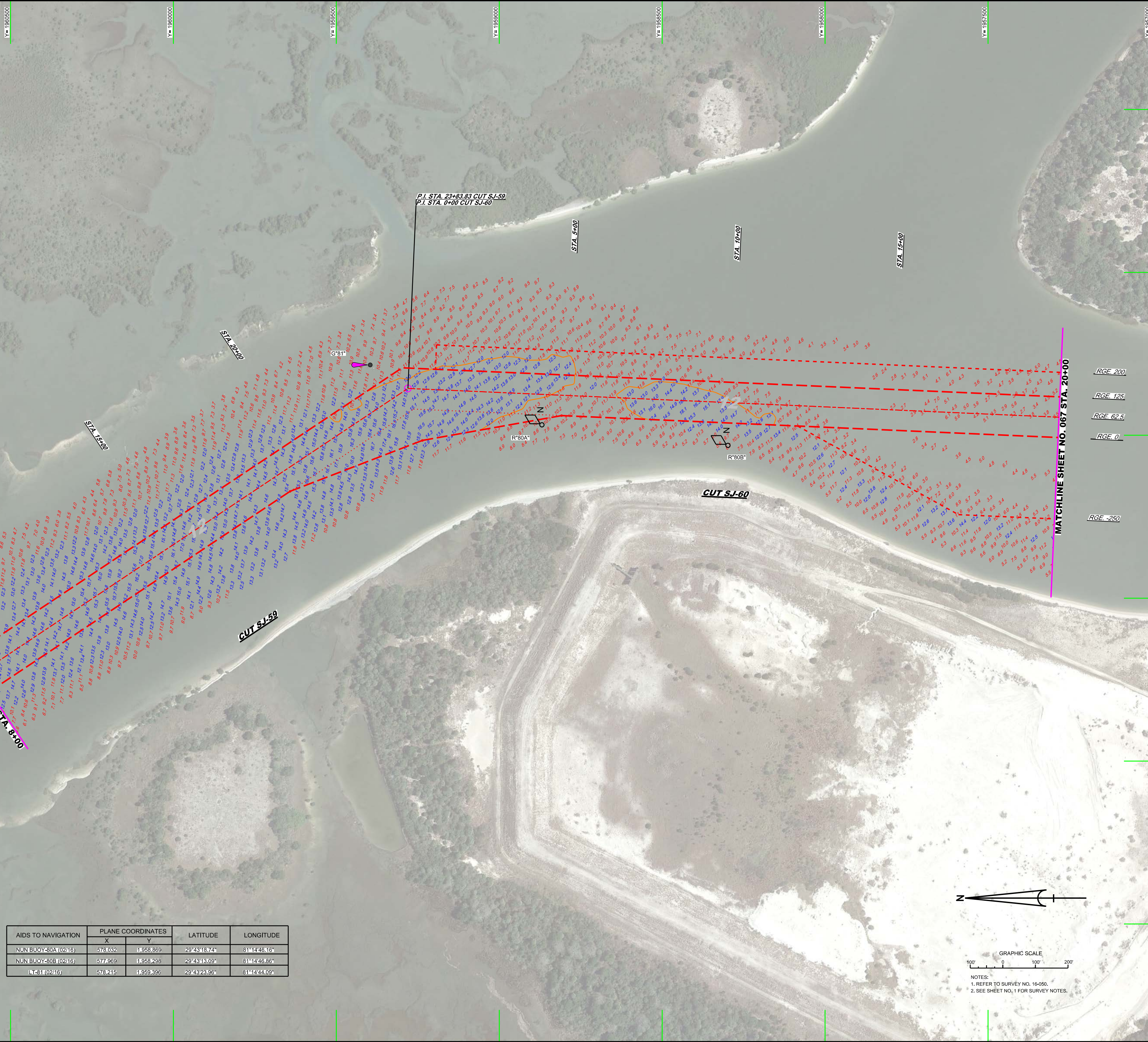


GRAPHIC SCALE
 100' 0 100 200

NOTES:
 1. REFER TO SURVEY NO. 16-050.
 2. SEE SHEET NO. 1 FOR SURVEY NOTES.

Designed by: WRM
 Drawn by: WRM
 Checked by: WRM
 Date: FEB 2016

**EXAMINATION SURVEY FY16
 10 AND 12-FOOT PROJECT**
 STA. 14+00 CUT SJ-57 THRU STA. 8+00 CUT SJ-59
PLAN



10 9 8 7 6 5 4 3 2 1

F X=579000 Y=1995000

E X=578500 Y=1990000

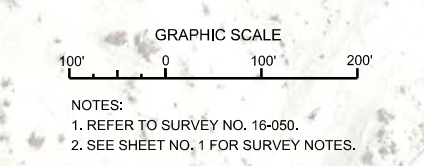
D X=578000 Y=1985000


C X=577500 Y=1980000

B X=577000 Y=1975000

A X=576500 Y=1970000

AIDS TO NAVIGATION	PLANE COORDINATES		LATITUDE	LONGITUDE
	X	Y		
NUN BUOY-80A (02/16)	578.032	1,958.869	29°43'18.74"	81°14'46.16"
NUN BUOY-80B (02/16)	577.959	1,958.298	29°43'13.09"	81°14'46.86"
LT-81 (02/16)	578.215	1,959.396	29°43'23.96"	81°14'44.09"





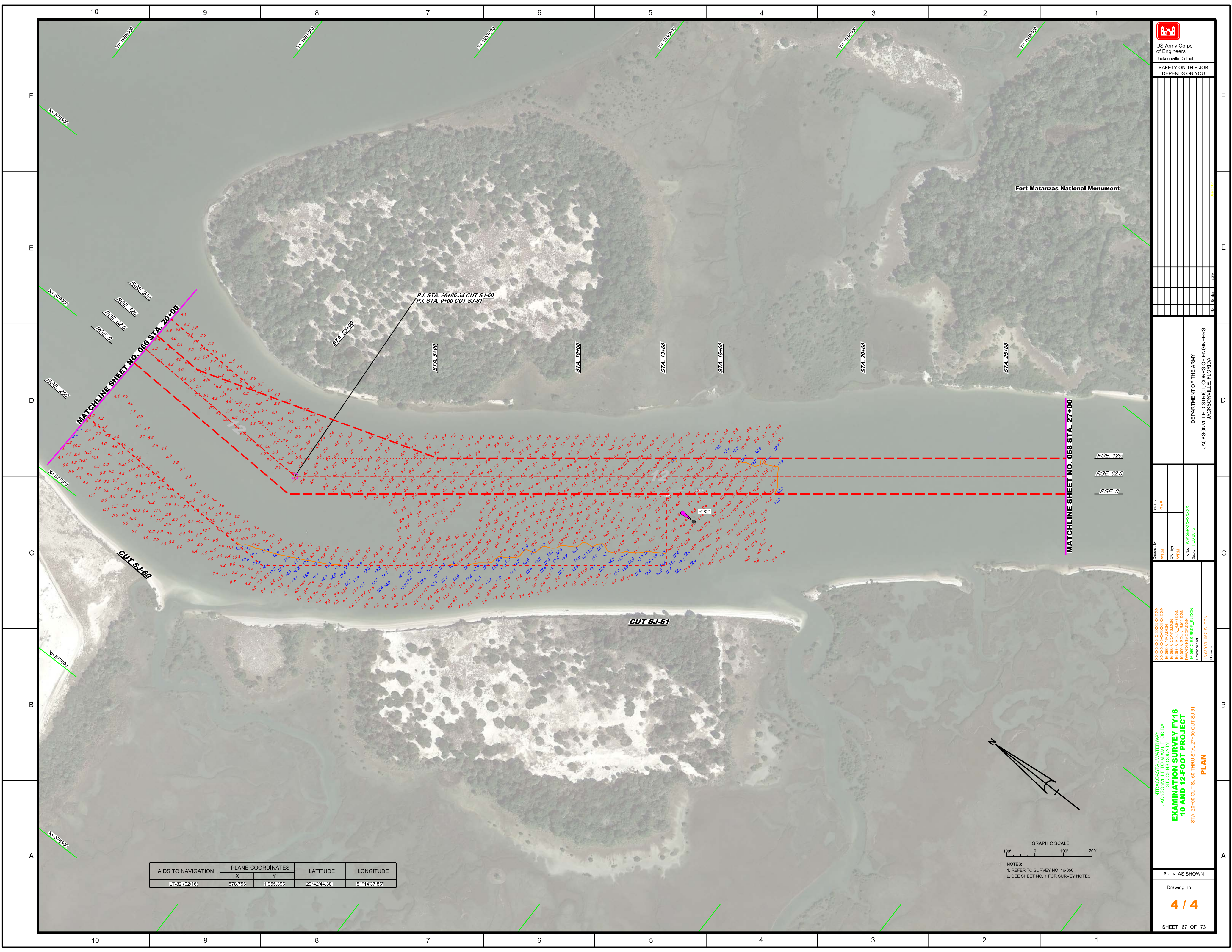
US Army Corps of Engineers
Jacksonville District

SAFETY ON THIS JOB
DEPENDS ON YOU

<p>DEPARTMENT OF THE ARMY JACKSONVILLE DISTRICT, CORPS OF ENGINEERS JACKSONVILLE, FLORIDA</p>	<p>Call by: GHR Designed by: WRM Drawn by: WRM File No: W1225A-00-A-004 Contract: FEB 2016</p>
---	--

INTRACOASTAL WATERWAY
JACKSONVILLE TO MIAMI, FLORIDA
ST. JOHN'S COUNTY
**EXAMINATION SURVEY FY16
10 AND 12-FOOT PROJECT**
STA. 8+00 CUT SJ-59 THRU STA. 20+00 CUT SJ-60
PLAN

Scale: AS SHOWN
Drawing no.
3 / 4
SHEET 66 OF 73



US Army Corps of Engineers
Jacksonville District

SAFETY ON THIS JOB
DEPENDS ON YOU

NO.	SYMBOL	ZONE

DEPARTMENT OF THE ARMY
JACKSONVILLE DISTRICT, CORPS OF ENGINEERS
JACKSONVILLE, FLORIDA

Designed by:	Checked by:
WRM	CHR
WRM	WRM
WRM	WRM

File Name: W022554-000-0001
Date: FEB 2016

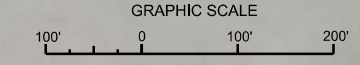
XXXXXXXXXXXXXXXXXXXXX.DGN
XXXXXXXXXXXXXXXXXXXXX.DGN
XXXXXXXXXXXXXXXXXXXXX.DGN
XXXXXXXXXXXXXXXXXXXXX.DGN
XXXXXXXXXXXXXXXXXXXXX.DGN
XXXXXXXXXXXXXXXXXXXXX.DGN
XXXXXXXXXXXXXXXXXXXXX.DGN
XXXXXXXXXXXXXXXXXXXXX.DGN
XXXXXXXXXXXXXXXXXXXXX.DGN

INTRACOASTAL WATERWAY
JACKSONVILLE TO MIAMI, FLORIDA
ST. JOHN'S COUNTY
**EXAMINATION SURVEY FY16
10 AND 12-FOOT PROJECT**
STA. 20+00 CUT SJ-60 THRU STA. 27+00 CUT SJ-61
PLAN

Scale: AS SHOWN

Drawing no.
4 / 4

AIDS TO NAVIGATION	PLANE COORDINATES		LATITUDE	LONGITUDE
	X	Y		
LT-82 (02/16)	578,756	1,955,396	29°42'44.38"	81°14'37.86"



NOTES:
1. REFER TO SURVEY NO. 16-050.
2. SEE SHEET NO. 1 FOR SURVEY NOTES.

