

NEW RIVER & IWW CUTS BW-43 THRU BW-48 BROWARD COUNTY, FLORIDA PROJECT CONDITION SURVEY FY16 8 AND 10-FOOT PROJECT

SURVEY NOTES

1. REFER TO SURVEY NO. 16-045XX-XXX.
2. SOUNDINGS ARE IN FEET AND TENTHS AND REFER TO NOAA'S REPORTED MEAN LOWER LOW WATER (MLLW) OF THE 1983-2001 TIDAL EPOCH.
3. TIDAL REDUCTIONS WERE OBTAINED UTILIZING A REAL-TIME KINEMATIC (RTK) GPS AND REFERENCED TO MLLW UTILIZING A HYPACK KINEMATIC TIDE DATUM (KTD) MODEL. KTD FILE NAME IS: "PALMBEACH-BROWARD_2016 05 26.KTD".
4. ALL ELEVATIONS ARE BELOW THE CHART DATUM UNLESS PRECEDED BY A (+) SIGN.
5. PLANE COORDINATES ARE BASED ON THE TRANSVERSE MERCATOR PROJECTION FOR THE EAST ZONE OF FLORIDA AND REFERENCED TO NORTH AMERICAN DATUM OF 1983 (NAD83).
6. ALL STATIONING REFERS TO THE CENTERLINE OF THE CHANNEL.
7. THIS SURVEY WAS PERFORMED USING REAL-TIME KINEMATIC (RTK) GPS POSITIONING WITH THE FOLLOWING REFERENCE BASE LOCATION:
REFERENCE BASE LOCATED AT "USN NORTH RANGE NO.5" (PID: CS4034)
8. DEPTHS DEPICTED BY THIS SURVEY ARE REFERENCED TO MLLW, TIDAL EPOCH 1983-2001 AS REPORTED BY THE NATIONAL OCEANIC AND ATMOSPHERIC ADMINISTRATION (NOAA). NOAA'S VDATUM MODEL WAS USED AND CALIBRATED TO THE PUBLISHED MLW HEIGHTS OF THE BENCHMARKS ASSOCIATED WITH THE TIDE GAGE SITE SPECIFIED BELOW:

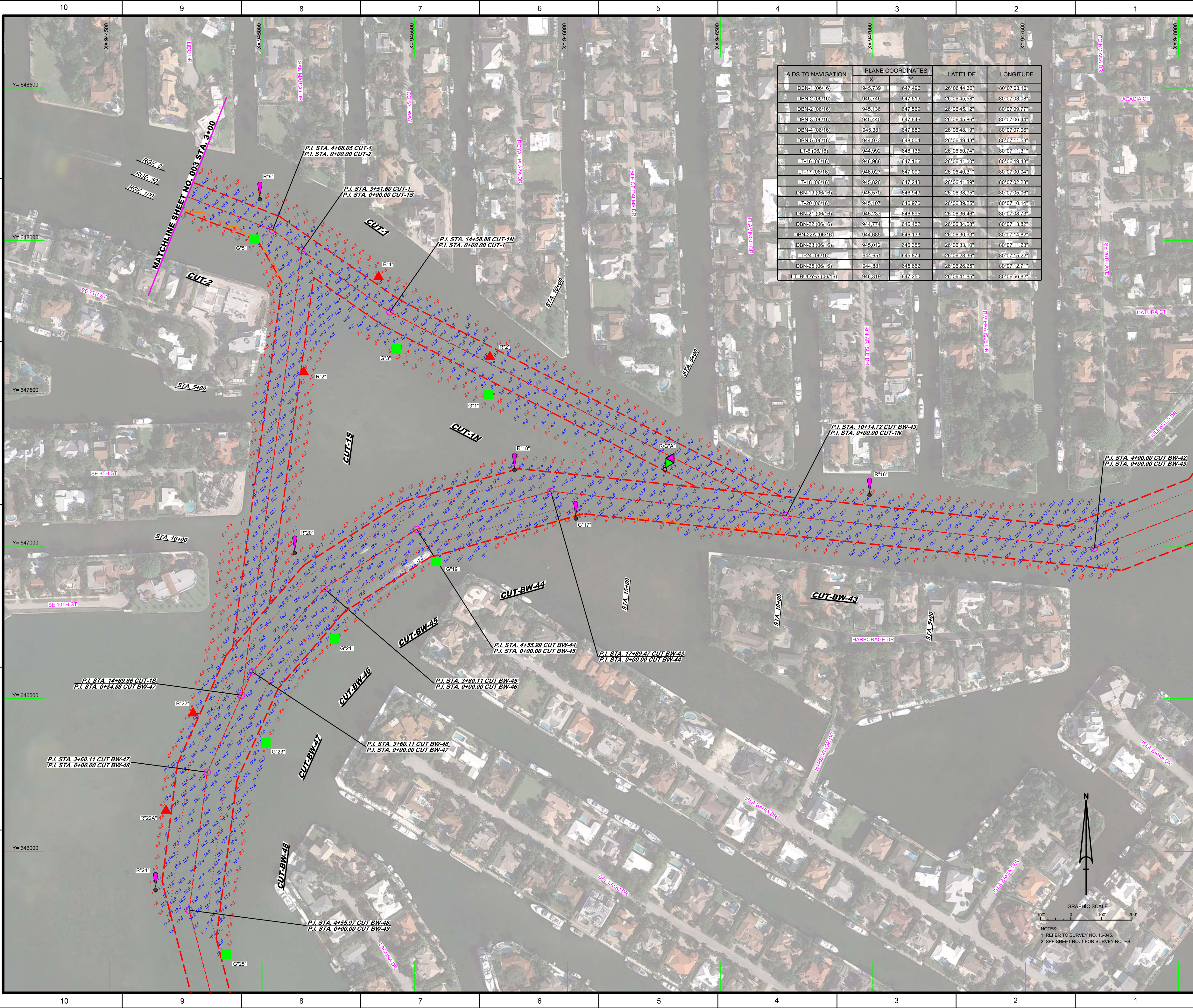
NOAA TIDAL STATION 872-2957 USED FOR ALL CUTS. (PID: AD5884)
VERTICAL MEASUREMENTS WERE MADE USING AN EDGETECH 6205 COMBINED MULTI-BEAM AND SIDESCAN. ALL SOUNDINGS SHOWN ARE IN HIGH FREQUENCY.
9. AIDS TO NAVIGATION WERE LOCATED DURING THIS SURVEY.
10. THE INFORMATION DEPICTED ON THIS MAP REPRESENTS THE RESULTS OF SURVEYS MADE ON THE DATES INDICATED ABOVE AND CAN ONLY BE CONSIDERED AS INDICATING THE GENERAL CONDITIONS AT THAT TIME. THIS CHART IS SOLELY FOR THE DISTRIBUTION OF AVAILABLE DEPTHS AT THE TIME OF THE SURVEY.
11. SURVEY ACCURACY PERFORMANCE STANDARDS, QUALITY CONTROL, AND QUALITY ASSURANCE REQUIREMENTS WERE FOLLOWED DURING THIS SURVEY IN ACCORDANCE WITH USACE EM 1110-2-1003, HYDROGRAPHIC SURVEYING, 30 NOV 13.

LEGEND	
	BENCHMARK
	LIGHTED BEACON
	GREEN DAYBEACON
	RED DAYBEACON
	RED LIGHTED BUOY
	GREEN LIGHTED BUOY
	CAN BUOY
	NUN BUOY
	TIDE STAFF
	PROJECT DEPTH

US Army Corps of Engineers
Jacksonville District

SAFETY ON THIS JOB DEPENDS ON YOU

<p>DESIGNED BY: WRM CHECKED BY: GHR DATE: JUN 2016</p>	<p>FILE NAME: 16-045XX-XXX.DGN PROJECT: NEW RIVER & IWW CUTS BW-43 THRU BW-48 DATE: JUN 2016</p>
<p>DEPARTMENT OF THE ARMY JACKSONVILLE DISTRICT, CORPS OF ENGINEERS JACKSONVILLE, FLORIDA</p>	
<p>PROJECT CONDITION SURVEY FY16 NEW RIVER 8-FOOT, IWW 10-FOOT PROJECT</p> <p>INDEX, LOCATION AND VICINITY MAP</p>	
<p>Scale: AS SHOWN</p> <p>Drawing no. 1</p>	
<p>SHEET 01 OF 03</p>	



AIDS TO NAVIGATION	PLANE COORDINATES		LATITUDE	LONGITUDE
	X	Y		
DBN-1 (06/16)	945.739	647.496	26°06'44.36"	80°07'03.16"
DBN-2 (06/16)	945.746	647.619	26°06'45.58"	80°07'03.08"
DBN-2 (06/16)	945.136	647.569	26°06'45.12"	80°07'09.77"
DBN-3 (06/16)	945.440	647.646	26°06'45.86"	80°07'06.44"
DBN-4 (06/16)	945.381	647.880	26°06'48.19"	80°07'07.06"
DBN-5 (06/16)	944.973	648.004	26°06'49.43"	80°07'11.53"
LT-5 (06/16)	944.992	648.135	26°06'50.74"	80°07'11.31"
LT-16 (06/16)	946.988	647.166	26°06'41.00"	80°06'49.48"
LT-17 (06/16)	946.027	647.090	26°06'40.31"	80°07'00.04"
LT-18 (06/16)	945.826	647.248	26°06'41.89"	80°07'02.23"
DBN-19 (06/16)	945.570	646.949	26°06'38.96"	80°07'05.06"
LT-20 (06/16)	945.107	646.976	26°06'39.25"	80°07'10.14"
DBN-21 (06/16)	945.237	646.695	26°06'38.46"	80°07'08.73"
DBN-22 (06/16)	944.774	646.452	26°06'34.08"	80°07'13.82"
DBN-22A (06/16)	944.685	646.133	26°06'30.93"	80°07'14.82"
DBN-23 (06/16)	945.012	646.355	26°06'33.10"	80°07'11.23"
LT-24 (06/16)	644.651	645.874	26°06'28.36"	80°07'15.22"
DBN-25 (06/16)	944.881	645.662	26°06'28.25"	80°07'12.71"
LT BUOY-A (06/16)	946.319	647.250	26°06'41.85"	80°06'56.82"

US Army Corps of Engineers
Jacksonville District

**SAFETY ON THIS JOB
DEPENDS ON YOU**

DEPARTMENT OF THE ARMY
JACKSONVILLE DISTRICT, CORPS OF ENGINEERS
JACKSONVILLE, FLORIDA

Drawn by: **GH**

Checked by: **WRM**

Designed by: **WRM**

Scale: **AS SHOWN**

Date: **JUN 2016**

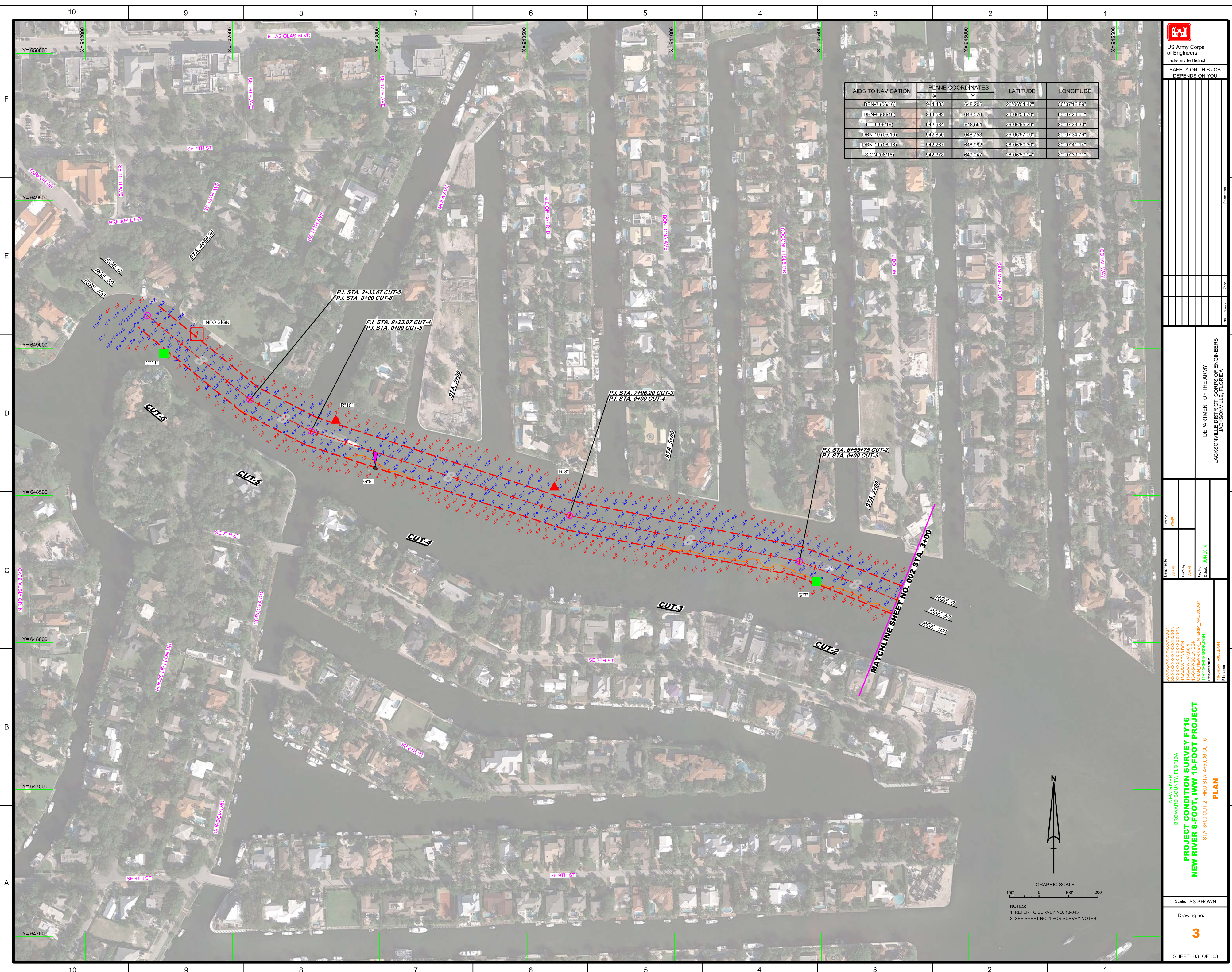
PROJECT CONDITION SURVEY FY16
NEW RIVER 8-FOOT, 100' 10-FOOT PROJECT
STA. 0+00 CUT BW-43 THRU STA. 4+59.97 CUT BW-46
STA. 3+60 CUT-1 AND STA. 0+00 THRU STA. 14+68.66 CUT-15

PLAN


Scale: **AS SHOWN**

Drawing no. **2**

SHEET 02 OF 03



AIDS TO NAVIGATION	PLANE COORDINATES		LATITUDE	LONGITUDE
	X	Y		
DBN-7 (06/16)	944.483	648.205	28°06'51.47"	80°07'16.89"
DBN-8 (06/16)	943.592	648.526	28°06'54.70"	80°07'26.64"
LT-9 (06/16)	942.984	648.591	28°06'55.39"	80°07'33.30"
DBN-10 (08/16)	942.850	648.753	28°06'57.00"	80°07'34.76"
DBN-11 (08/16)	942.267	648.982	28°06'59.30"	80°07'41.14"
SIGN (06/16)	942.378	649.047	28°06'59.94"	80°07'39.91"



US Army Corps of Engineers
Jacksonville District
SAFETY ON THIS JOB
DEPENDS ON YOU

DEPARTMENT OF THE ARMY
JACKSONVILLE DISTRICT, CORPS OF ENGINEERS
JACKSONVILLE, FLORIDA

Designed by: WRM
Checked by: GHR
Drawn by: WRM
File No.: CHAN_NEWRIVER_INTERM_NA030.DGN
Date: JUN 2016

NEW RIVER
BROWARD COUNTY, FLORIDA
PROJECT CONDITION SURVEY FY16
NEW RIVER 8-FOOT, 10W 10-FOOT PROJECT
STA. 3+00 CUT-2 THRU STA. 4+50.36 CUT-6
PLAN

Scale: AS SHOWN
Drawing no. **3**
SHEET 03 OF 03

