

FORT MYERS BEACH HARBOR LEE COUNTY, FLORIDA PROJECT CONDITION SURVEY FY16 11 & 12-FOOT PROJECT

SURVEY NOTES

- REFER TO SURVEY NO. 16-037.
- DEPTHS DEPICTED BY THIS SURVEY ARE REFERENCED TO MEAN LOWER LOW WATER (MLLW) OF THE 1983-2001 TIDAL EPOCH, AS REPORTED BY THE NATIONAL OCEANIC AND ATMOSPHERIC ADMINISTRATION (NOAA). NOAA'S VDATUM MODEL WAS USED AND CALIBRATED TO THE PUBLISHED MLLW HEIGHTS OF THE BENCH MARKS ASSOCIATED WITH THE TIDE GAGE SITE SPECIFIED BELOW:
NOAA TIDAL STATION 872-5366 (PID: AD1372) ALL CUTS.
- TIDAL REDUCTIONS WERE OBTAINED UTILIZING A REAL-TIME KINEMATIC (RTK) GPS AND REFERENCED TO MLLW UTILIZING A HYPACK KINEMATIC TIDE DATUM (KTD) MODEL. KTD FILE NAME IS: "SPC-FL-WEST-2010-12-07.KTD".
- ALL ELEVATIONS ARE BELOW THE CHART DATUM UNLESS PRECEDED BY A (+) SIGN.
- PLANE COORDINATES ARE BASED ON THE TRANSVERSE MERCATOR PROJECTION FOR THE WEST ZONE OF FLORIDA AND REFERENCED TO NORTH AMERICAN DATUM OF 1983 (NAD83).
- ALL STATIONING REFERS TO THE CENTERLINE OF THE CHANNEL.
- THIS SURVEY WAS PERFORMED USING REAL-TIME KINEMATIC (RTK) GPS FOR POSITIONING WITH THE FOLLOWING REFERENCE BASE LOCATIONS:
REFERENCE BASE LOCATED AT "STALEY" (PID: BBCJ30)
REFERENCE BASE LOCATED AT "ESTERO-101" (PID: BBDV83)
VERTICAL MEASUREMENTS WERE MADE USING AN EDGETECH 6205 COMBINATION SIDESCAN AND MULTI-BEAM. ALL SOUNDINGS SHOWN ARE IN HIGH FREQUENCY.
- VESEL DATE OF SURVEY CUT
SB-48 12-14 JAN 2016 1-10, TURNING BASIN
TOPOGRAPHIC 14 JAN 2016 BOSTICH POINT SHOAL
- AIDS TO NAVIGATION WERE LOCATED DURING THIS SURVEY.
- THE INFORMATION DEPICTED ON THIS MAP REPRESENTS THE RESULTS OF SURVEYS MADE ON THE DATES INDICATED ABOVE AND CAN ONLY BE CONSIDERED AS INDICATING THE GENERAL CONDITIONS AT THAT TIME. THIS CHART IS SOLELY FOR THE DISTRIBUTION OF AVAILABLE DEPTHS AT THE TIME OF THE SURVEY.
- SURVEY ACCURACY PERFORMANCE STANDARDS, QUALITY CONTROL, AND QUALITY ASSURANCE REQUIREMENTS WERE FOLLOWED DURING THIS SURVEY IN ACCORDANCE WITH USACE EM 1110-2-1003, HYDROGRAPHIC SURVEYING, 30 NOV 13.

LEGEND	
	MONUMENT
	LIGHTED BEACON
	GREEN DAY BEACON
	RED DAY BEACON
	RED LIGHTED BUOY
	GREEN LIGHTED BUOY
	CAN BUOY
	NUN BUOY
	TIDE STAFF
	PROJECT DEPTH

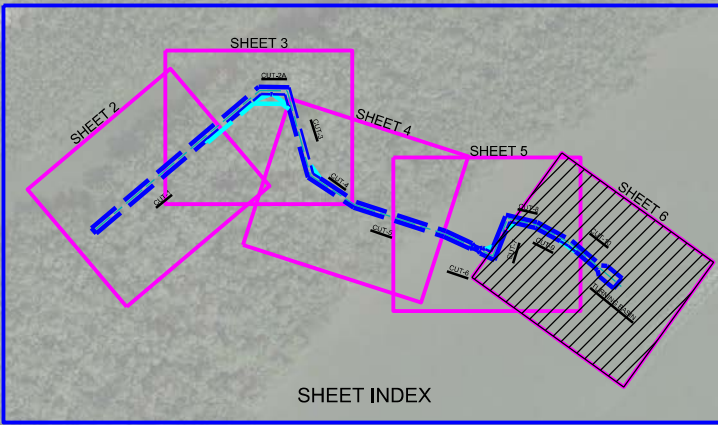
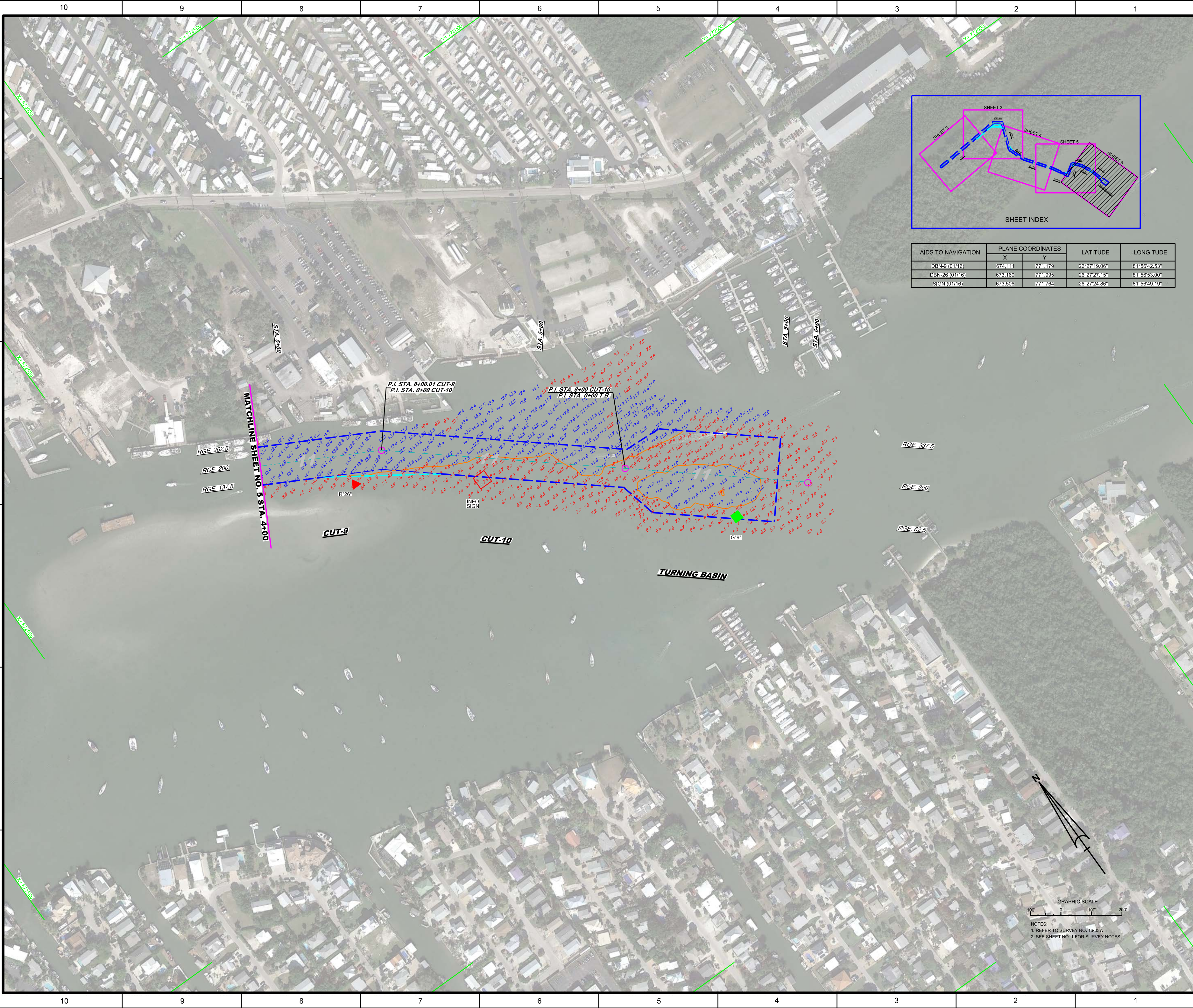
US Army Corps of Engineers
Jacksonville District
SAFETY ON THIS JOB
DEPENDS ON YOU

DEPARTMENT OF THE ARMY
JACKSONVILLE DISTRICT, CORPS OF ENGINEERS
JACKSONVILLE, FLORIDA


DESIGNED BY: WRM
DRAWN BY: WRM
CHECKED BY: WRM
DATE: JAN 2016

PROJECT CONDITION SURVEY FY16
11 & 12-FOOT PROJECT
INDEX, LOCATION AND VICINITY
MAP

Scale: AS SHOWN
Drawing no. 1
SHEET 01 OF 06



AIDS TO NAVIGATION	PLANE COORDINATES		LATITUDE	LONGITUDE
	X	Y		
DBN-9 (01/16)	674.111	774.179	26°27'19.05"	81°56'42.53"
DBN-26 (01/16)	673.160	774.995	26°27'27.15"	81°56'53.00"
SIGN (01/16)	673.506	774.764	26°27'24.86"	81°56'49.19"



US Army Corps of Engineers
Jacksonville District
SAFETY ON THIS JOB DEPENDS ON YOU

DEPARTMENT OF THE ARMY
JACKSONVILLE DISTRICT, CORPS OF ENGINEERS
JACKSONVILLE, FLORIDA

Drawn by: WRM
Checked by: GHR
Date: JAN 2016

PROJECT CONDITION SURVEY FY16
11 & 12-FOOT PROJECT
PLAN
STA. 4+00 CUT-9 THRU STA 9+00 TURNING BASIN

Scale: AS SHOWN
Drawing no. **6**
SHEET 06 OF 06

GRAPHIC SCALE
100' 0' 100' 200'

NOTES:
1. REFER TO SURVEY NO. 16-037.
2. SEE SHEET NO. 1 FOR SURVEY NOTES.