

GULF INTRACOASTAL WATERWAY CALOOSAHATCHEE RIVER TO ANCLOTE RIVER LEE COUNTY, FLORIDA EXAMINATION SURVEY FY16 9-FOOT PROJECT

SURVEY NOTES

- REFER TO SURVEY NO. 16-036.
- SOUNDINGS ARE IN FEET AND TENTHS AND REFER TO NOAA'S REPORTED MEAN LOWER LOW WATER (MLLW) OF THE 1983-2001 TIDAL EPOCH.
- TIDAL REDUCTIONS WERE OBTAINED UTILIZING A REAL-TIME KINEMATIC (RTK) GPS AND REFERENCED TO MLLW UTILIZING A HYPACK KINEMATIC TIDE DATUM (KTD). KTD FILE NAME IS: "SPC-FL-WEST-2010-12-07.KTD".
- ALL ELEVATIONS ARE BELOW THE CHART DATUM UNLESS PRECEDED BY A (+) SIGN.
- PLANE COORDINATES ARE BASED ON THE TRANSVERSE MERCATOR PROJECTION FOR THE WEST ZONE OF FLORIDA AND REFERENCED TO NORTH AMERICAN DATUM OF 1983 (NAD83).
- ALL STATIONING REFERS TO THE CENTERLINE OF THE CHANNEL.
- THIS SURVEY WAS PERFORMED USING REAL-TIME KINEMATIC (RTK) GPS POSITIONING WITH THE FOLLOWING REFERENCE BASE LOCATIONS:
REFERENCE BASE LOCATED AT "GIWW L 1" (PID: BBFB07)
REFERENCE BASE LOCATED AT "GIWW L 2" (PID: BBFB18)
REFERENCE BASE LOCATED AT "PC102" (PID: BBCE70)
- DEPTHS DEPICTED BY THIS SURVEY ARE REFERENCED TO MLLW, TIDAL EPOCH 1983-2001 AS REPORTED BY THE NATIONAL OCEANIC AND ATMOSPHERIC ADMINISTRATION (NOAA). NOAA'S VDATUM MODEL WAS USED AND CALIBRATED TO THE PUBLISHED MLLW HEIGHTS OF THE BENCHMARKS ASSOCIATED WITH THE TIDE GAGE SITES SPECIFIED BELOW:
NOAA TIDAL STATION 872 5393 A USED FOR CUTS L-1 THRU L-6. (PID: DL8706)
NOAA TIDAL STATION 872 5441 A USED FOR CUTS L-7 THRU L-11. (PID: DL8716)
NOAA TIDAL STATION 872 5577 E USED FOR CUTS L-12 THRU L-22. (PID: DL7346)
VERTICAL MEASUREMENTS WERE MADE USING AN EDGETECH 6205 COMBINED MULTI-BEAM AND SIDESCAN. ALL SOUNDINGS SHOWN ARE IN HIGH FREQUENCY.
- VESEL DATE OF SURVEY CUT
SB-48 04 FEB 2016 L-1 THRU L-6
SB-48 01 MAR 2016 L-7 THRU L-11
SB-48 02 MAR 2016 L-12 THRU L-22
- AIDS TO NAVIGATION WERE LOCATED DURING THIS SURVEY.
- THE INFORMATION DEPICTED ON THIS MAP REPRESENTS THE RESULTS OF SURVEYS MADE ON THE DATES INDICATED ABOVE AND CAN ONLY BE CONSIDERED AS INDICATING THE GENERAL CONDITIONS AT THAT TIME. THIS CHART IS SOLELY FOR THE DISTRIBUTION OF AVAILABLE DEPTHS AT THE TIME OF THE SURVEY.
- SURVEY ACCURACY PERFORMANCE STANDARDS, QUALITY CONTROL, AND QUALITY ASSURANCE REQUIREMENTS WERE FOLLOWED DURING THIS SURVEY IN ACCORDANCE WITH USACE EM 1110-2-1003, HYDROGRAPHIC SURVEYING, 30 NOV 13.

LEGEND	
	MONUMENT
	LIGHTED BEACON
	GREEN DAYBEACON
	RED DAYBEACON
	RED LIGHTED BUOY
	GREEN LIGHTED BUOY
	CAN BUOY
	NUN BUOY
	TIDE STAFF
	PROJECT DEPTH

US Army Corps of Engineers
Jacksonville District
SAFETY ON THIS JOB
DEPENDS ON YOU

DEPARTMENT OF THE ARMY JACKSONVILLE DISTRICT, CORPS OF ENGINEERS JACKSONVILLE, FLORIDA	Check By: GHR Design By: WRM Drawn By: WRM File No: MAR 2016 Date: MAR 2016	GULF INTRACOASTAL WATERWAY CALOOSAHATCHEE RIVER HYDROGRAPHIC EXAM SURVEY FY16 9-FOOT PROJECT INDEX, LOCATION AND VICINITY MAP	Scale: AS SHOWN Drawing no. 1	SHEET 01 OF 48



F
E
D
C
B
A

F
M
D
C
B
A

US Army Corps of Engineers
Jacksonville District

SAFETY ON THIS JOB DEPENDS ON YOU

No.	Symbol	

Department of the Army
Jacksonville District, Corps of Engineers
Jacksonville, Florida

Scale: AS SHOWN

Drawing no.

3

SHEET 03 OF 48

Designed by: WRM
Drawn by: WRM
File Name: H:\0805-GS-RROR_LEE.DGN
Reference File: H:\0805-H40CL_LEE.DGN

Checked by: GHR
Drawn by: WRM
File Name: H:\0805-GS-RROR_LEE.DGN
Reference File: H:\0805-H40CL_LEE.DGN

GULF INTRACOASTAL WATERWAY

CALOOSAHATCHEE COUNTY, FLORIDA

HYDROGRAPHIC EXAM SURVEY FY16

9-FOOT PROJECT

STA. 34+00 THRU STA. 72+00 CUT L-1

PLAN

March 2016

GRAPHIC SCALE


100' 0 100' 200'

NOTES:
1. REFER TO SURVEY NO. 16-036.
2. SEE SHEET NO. 1 FOR SURVEY NOTES.

AIDS TO NAVIGATION	PLANE COORDINATES		LATITUDE	LONGITUDE
	X	Y		
DBN-2A (03/16)	646,506	789,016	26°30'15.76"	82°01'46.32"
DBN-3 (03/16)	646,561	788,882	26°30'14.43"	82°01'45.72"
DBN-3A (03/16)	644,761	787,794	26°30'03.65"	82°02'05.53"

Big Island





 US Army Corps of Engineers
 Jacksonville District
 SAFETY ON THIS JOB
 DEPENDS ON YOU

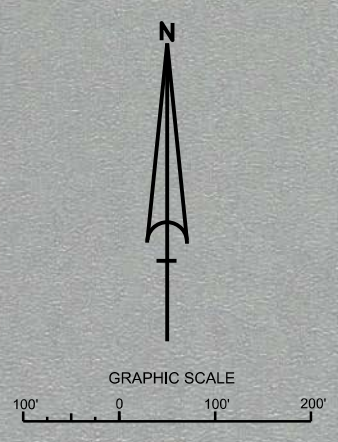
DEPARTMENT OF THE ARMY
 JACKSONVILLE DISTRICT, CORPS OF ENGINEERS
 JACKSONVILLE, FLORIDA

Drawn by: WRM
 Designated by: GHR
 Date: MAR 2016
 File name: H:\0305-GS-BRDR_LEE.DGN
 Reference file: H:\0305-HR04_LEE.DGN

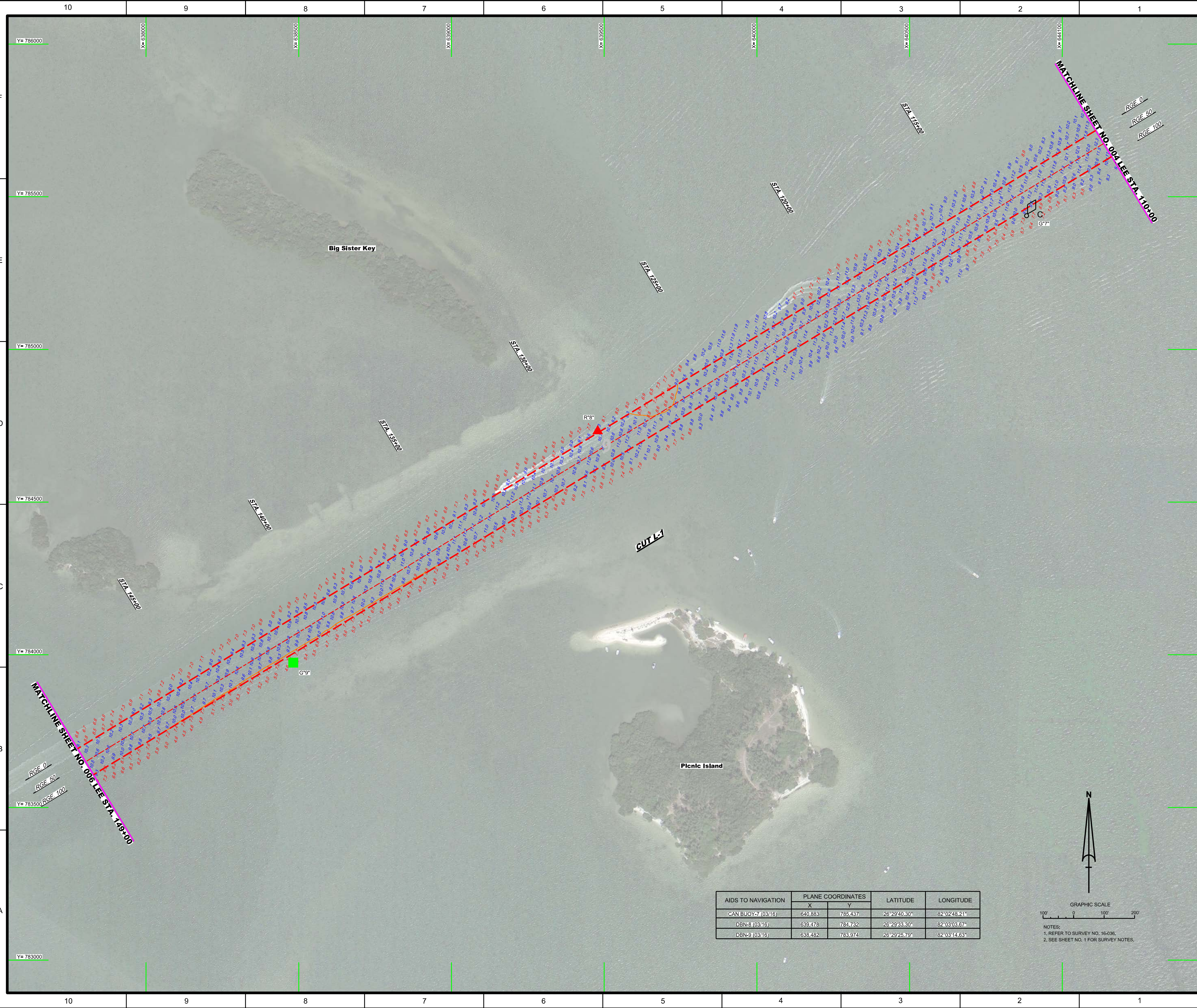
GULF INTRACOASTAL WATERWAY
 CALOOSAHEE COUNTY, FLORIDA
HYDROGRAPHIC EXAM SURVEY FY16
9-FOOT PROJECT
 STA. 72+00 THRU STA. 110+00 CUT L-1
PLAN

Scale: AS SHOWN
 Drawing no.
4
 SHEET 04 OF 48

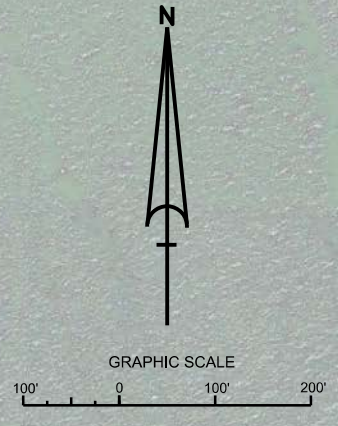
AIDS TO NAVIGATION	PLANE COORDINATES		LATITUDE	LONGITUDE
	X	Y		
DBN-5 (03/16)	642,840	785,666	26°29'54.47"	82°02'26.68"
LT-9 (03/16)	642,702	785,717	26°29'52.98"	82°02'28.20"



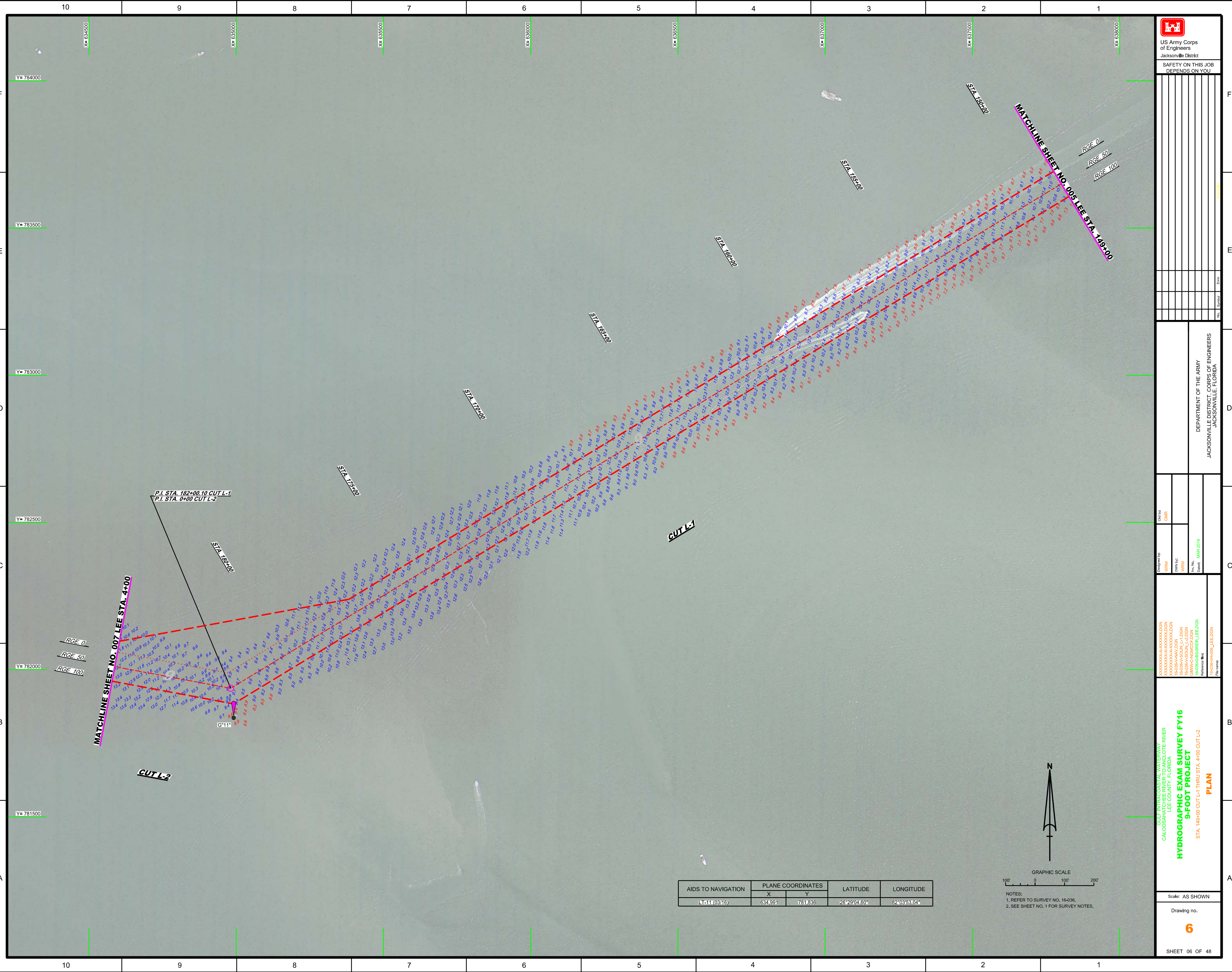
NOTES:
 1. REFER TO SURVEY NO. 16-036.
 2. SEE SHEET NO. 1 FOR SURVEY NOTES.



AIDS TO NAVIGATION	PLANE COORDINATES		LATITUDE	LONGITUDE
	X	Y		
CAN BUOY-7 (03/16)	640.883	785.437	26°29'40.30"	82°02'48.21"
DBN-8 (03/16)	639.478	784.732	26°29'33.30"	82°03'03.67"
DBN-9 (03/16)	638.482	783.974	26°29'25.79"	82°03'14.63"



NOTES:
1. REFER TO SURVEY NO. 16-036,
2. SEE SHEET NO. 1 FOR SURVEY NOTES.



P.I. STA. 182+00.10 CUT L-1
P.I. STA. 0+00 CUT L-2

MATCHLINE SHEET NO. 007 LEE STA. 4+00



GRAPHIC SCALE
100' 0 100' 200'

NOTES:
1. REFER TO SURVEY NO. 16-036,
2. SEE SHEET NO. 1 FOR SURVEY NOTES.

AIDS TO NAVIGATION	PLANE COORDINATES		LATITUDE	LONGITUDE
	X	Y		
LT-11 (03/16)	634.991	781.836	26°29'04.60"	82°03'53.04"

DEPARTMENT OF THE ARMY
JACKSONVILLE DISTRICT, CORPS OF ENGINEERS
JACKSONVILLE, FLORIDA

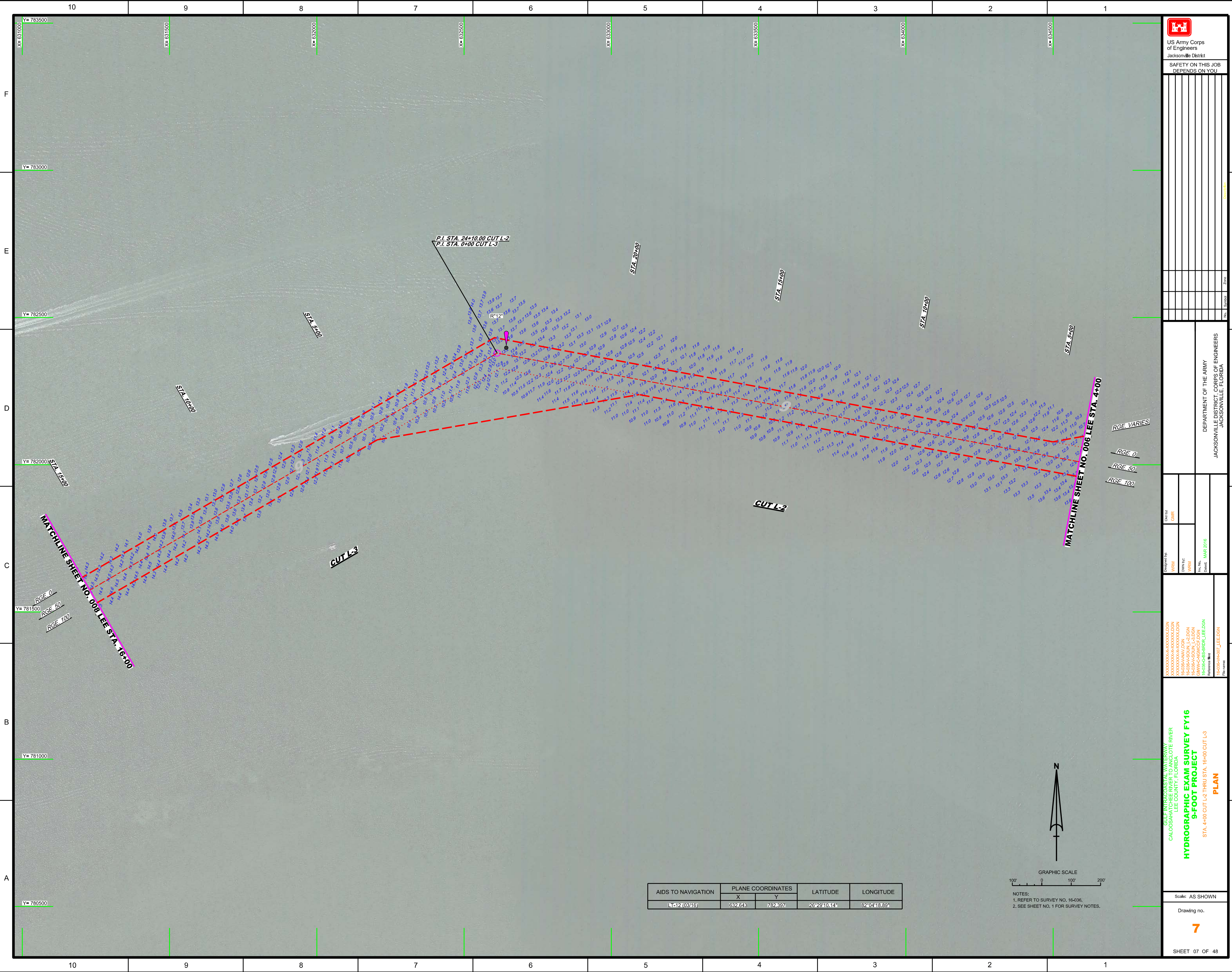
Checked by: GHR
Designed by: WRM
Drawn by: WRM
File No.: 16-036-0001-1-000
Date: MAR 2016


XXXXXXXXXXXXXXXXXXXX.DGN
XXXXXXXXXXXXXXXXXXXX.DGN
XXXXXXXXXXXXXXXXXXXX.DGN
R:\036\A\001\1-000.DGN
R:\036\A\001\1-000.DGN
R:\036\A\001\1-000.DGN
R:\036\A\001\1-000.DGN
R:\036\A\001\1-000.DGN

GULF INTRACOSTAL WATERWAY
CALOOSAHATCHEE COUNTY, FLORIDA
HYDROGRAPHIC EXAM SURVEY FY16
9-FOOT PROJECT
STA. 149+00 CUT L-1 THRU STA. 4+00 CUT L-2
PLAN

Scale: AS SHOWN

Drawing no.
6





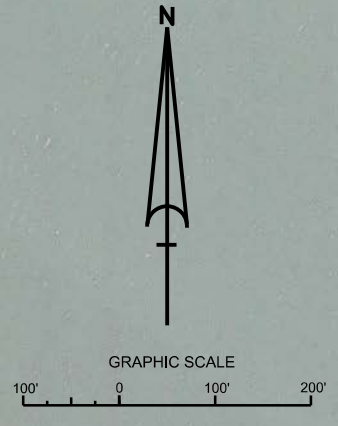
 US Army Corps of Engineers
 Jacksonville District
 SAFETY ON THIS JOB
 DEPENDS ON YOU

DEPARTMENT OF THE ARMY
 JACKSONVILLE DISTRICT, CORPS OF ENGINEERS
 JACKSONVILLE, FLORIDA

Checked by: GHR
 Designed by: WRM
 Drawn by: WRM
 File No.: MAR 2016
 Reference File: 16-036-16-007_LEE.DGN

GULF INTRACOSTAL WATERWAY
 CALOOSAHEE RIVER
 CALOOSAHEE COUNTY, FLORIDA
HYDROGRAPHIC EXAM SURVEY FY16
9-FOOT PROJECT
 STA. 4+00 CUT L-2 THRU STA. 16+00 CUT L-3
PLAN
 Scale: AS SHOWN
 Drawing no. **7**
 SHEET 07 OF 48

AIDS TO NAVIGATION	PLANE COORDINATES		LATITUDE	LONGITUDE
	X	Y		
11-12 (03/16)	632,643	782,397	23°29'10.14"	82°04'18.83"



NOTES:
 1. REFER TO SURVEY NO. 16-036,
 2. SEE SHEET NO. 1 FOR SURVEY NOTES.

F

E

D

C

B

A

F

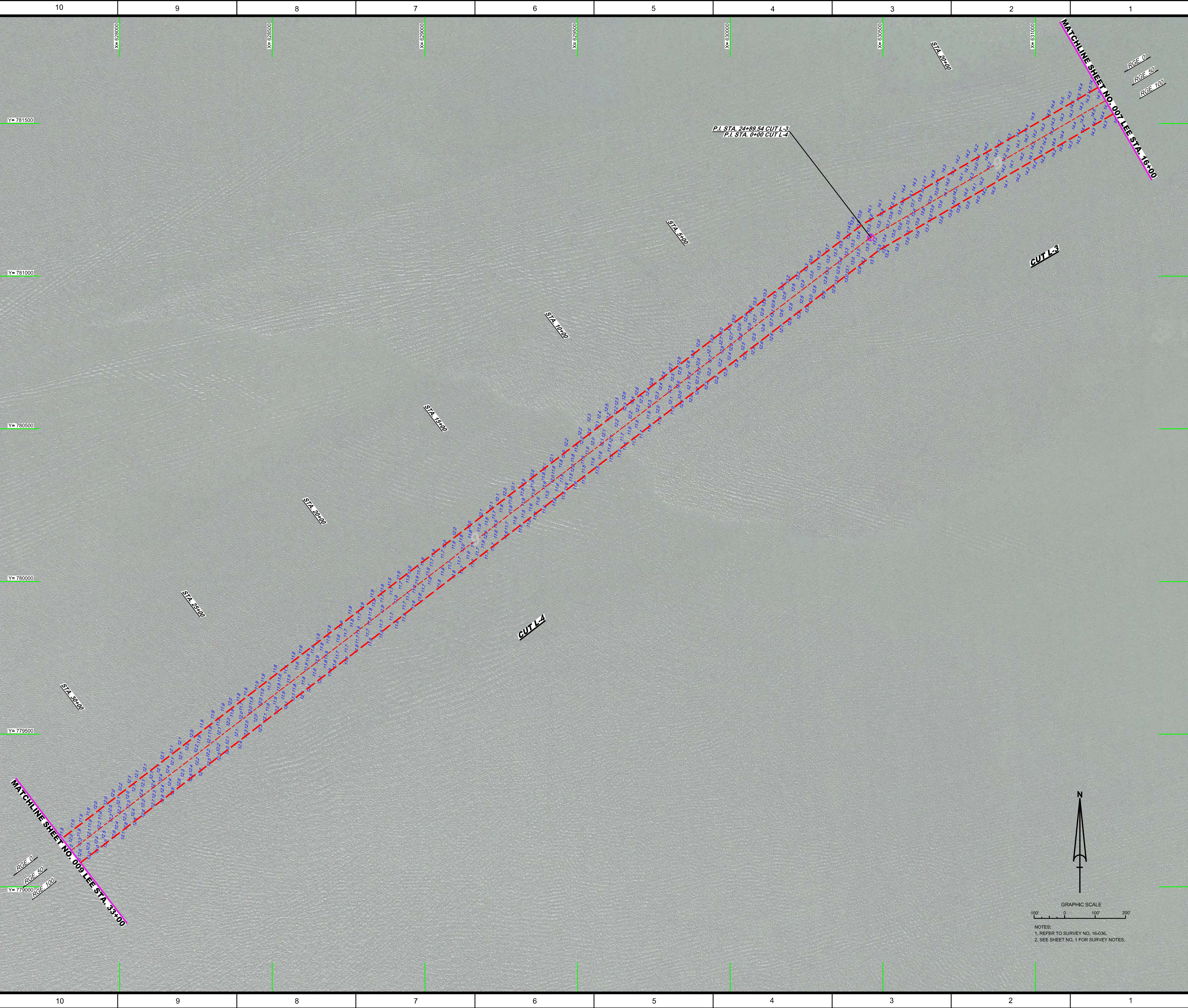
E

D

C

B

A



 US Army Corps of Engineers Jacksonville District SAFETY ON THIS JOB DEPENDS ON YOU	
DEPARTMENT OF THE ARMY JACKSONVILLE DISTRICT, CORPS OF ENGINEERS JACKSONVILLE, FLORIDA	
Created by: GHR Designed by: WRM Drawn by: WRM File Name: 16-036-BS-BRD-R_LEE.DGN Reference File: 16-036-HYD-E_LEE.DGN	Date: MAR 2016 HYDROGRAPHIC EXAM SURVEY FY16 9-FOOT PROJECT STA. 16+00 CUT L-3 THRU STA. 33+00 CUT L-4 PLAN
Scale: AS SHOWN Drawing no. 8 SHEET 08 OF 48	



NOTES:
 1. REFER TO SURVEY NO. 16-036,
 2. SEE SHEET NO. 1 FOR SURVEY NOTES.



US Army Corps
of Engineers
Jacksonville District

SAFETY ON THIS JOB
DEPENDS ON YOU

No.	Symbol	Zone	Description

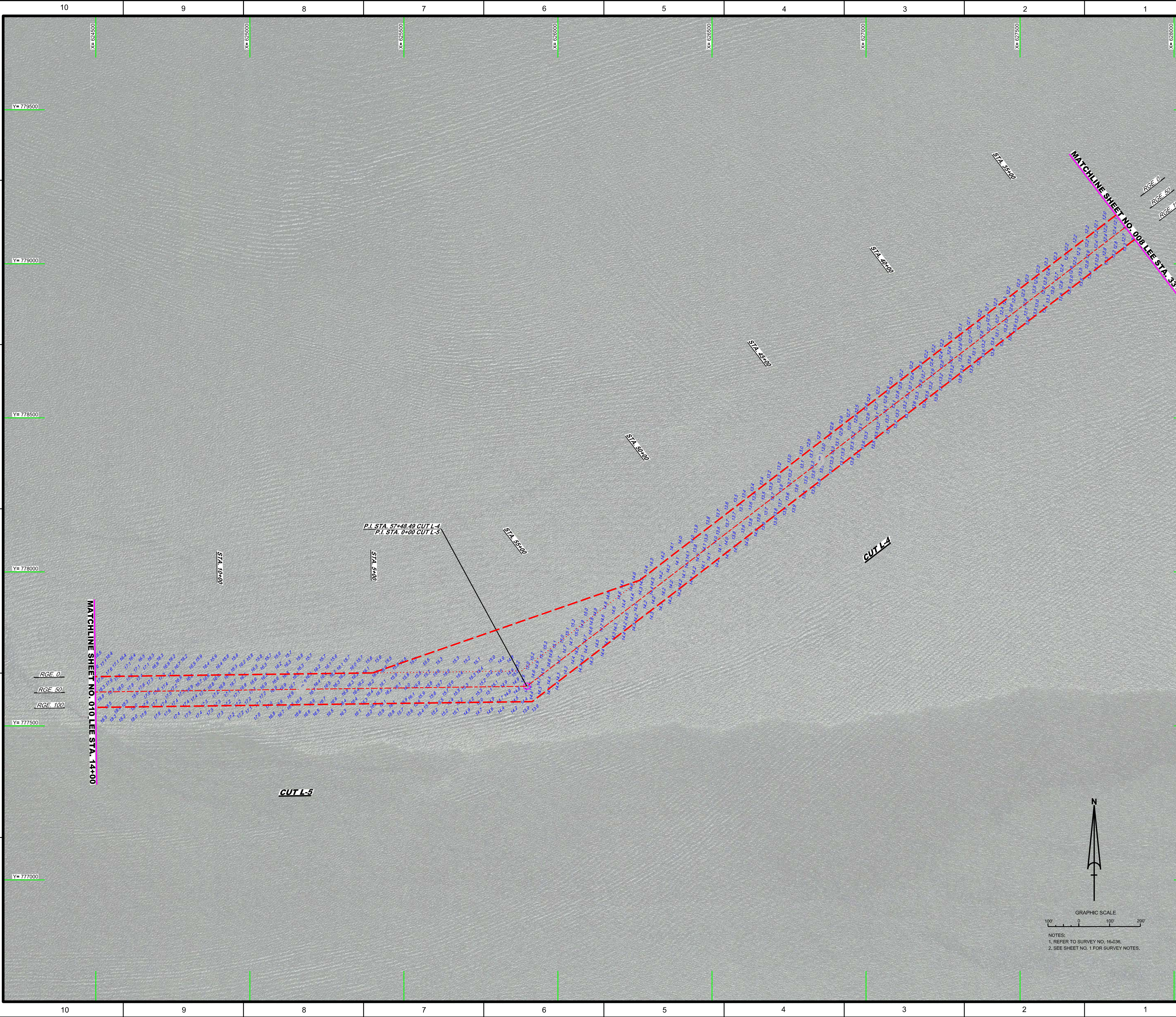
DEPARTMENT OF THE ARMY
JACKSONVILLE DISTRICT, CORPS OF ENGINEERS
JACKSONVILLE, FLORIDA

Checked By: GHR
Designed By: WRM
Drawn By: WRM
File Name: 16-036-9-PLAN
Date Plotted: MAR 2016

XXXXXXXXXXXXXXXXXXXX.DGN
XXXXXXXXXXXXXXXXXXXX.DGN
XXXXXXXXXXXXXXXXXXXX.DGN
XXXXXXXXXXXXXXXXXXXX.DGN
XXXXXXXXXXXXXXXXXXXX.DGN
XXXXXXXXXXXXXXXXXXXX.DGN
XXXXXXXXXXXXXXXXXXXX.DGN
XXXXXXXXXXXXXXXXXXXX.DGN
XXXXXXXXXXXXXXXXXXXX.DGN
XXXXXXXXXXXXXXXXXXXX.DGN

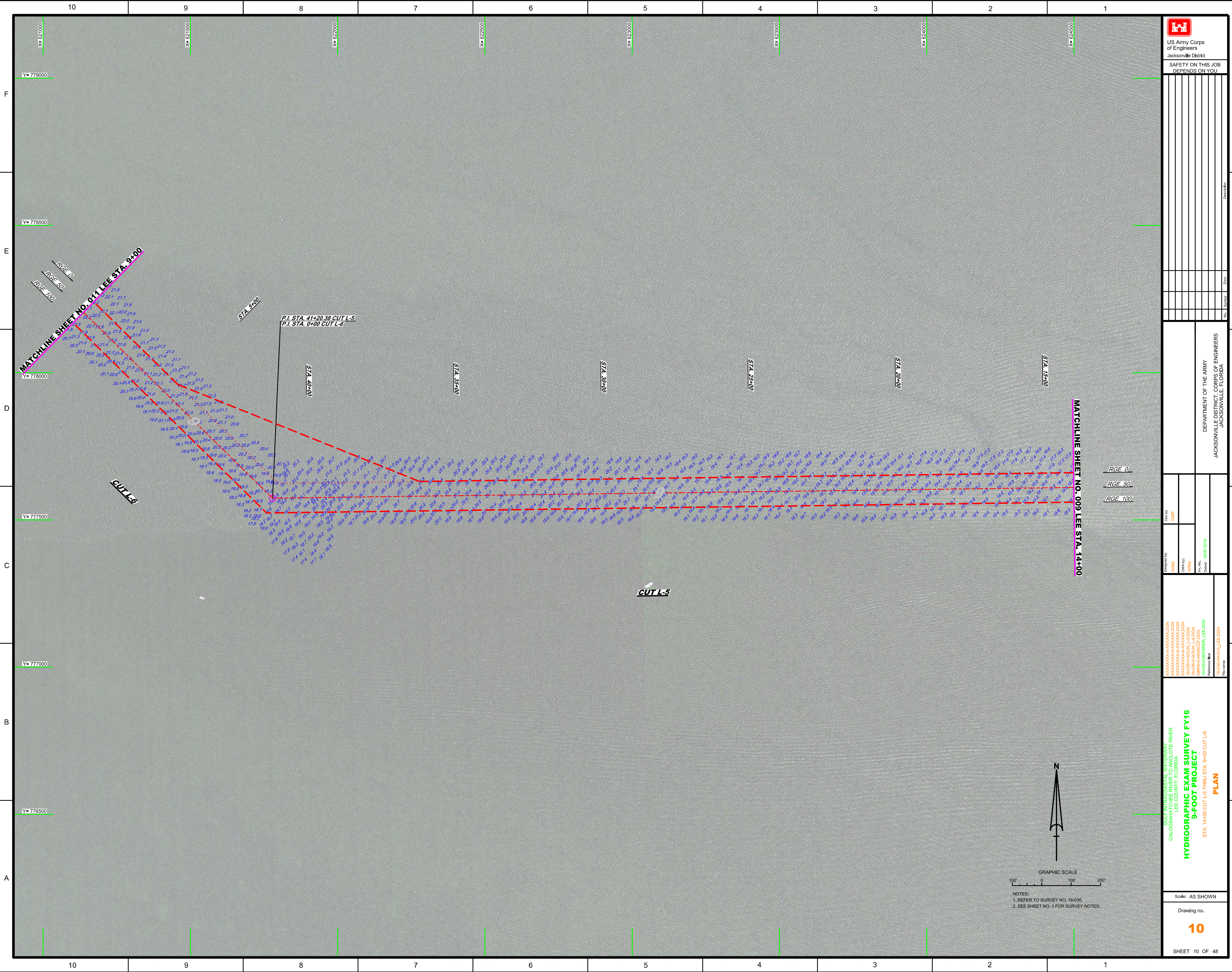
GULF INTRACASTAL WATERWAY
CALOOSHA LEE COUNTY, FLORIDA
**HYDROGRAPHIC EXAM SURVEY FY16
9-FOOT PROJECT**
STA. 33+00 CUT L-4 THRU STA. 14+00 CUT L-5
PLAN


Scale: AS SHOWN
Drawing no. **9**
SHEET 09 OF 48



GRAPHIC SCALE
100' 0 100' 200'

NOTES:
1. REFER TO SURVEY NO. 16-036,
2. SEE SHEET NO. 1 FOR SURVEY NOTES.





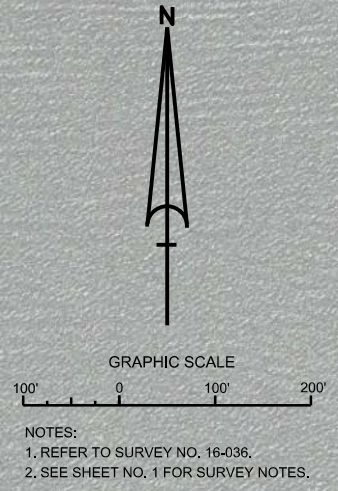
 US Army Corps of Engineers
 Jacksonville District
 SAFETY ON THIS JOB
 DEPENDS ON YOU

DEPARTMENT OF THE ARMY
 JACKSONVILLE DISTRICT, CORPS OF ENGINEERS
 JACKSONVILLE, FLORIDA

Checked by: GHR
 Designed by: WRM
 Drawn by: WRM
 File Name: 16-036-SS-BRDR_LEE.DGN
 Date: MAR 2016

GULF INTRACOSTAL WATERWAY
 CALOOSAHATCHEE COUNTY, FLORIDA
HYDROGRAPHIC EXAM SURVEY FY16
9-FOOT PROJECT
 STA. 14+00 CUT L-5 THRU STA. 9+00 CUT L-6
PLAN

Scale: AS SHOWN
 Drawing no.
10
 SHEET 10 OF 48



US Army Corps of Engineers
Jacksonville District

SAFETY ON THIS JOB
DEPENDS ON YOU

No.	Symbol	Description

DEPARTMENT OF THE ARMY
JACKSONVILLE DISTRICT, CORPS OF ENGINEERS
JACKSONVILLE, FLORIDA

Checked by:	GHR
Designed by:	WRM
Drawn by:	WRM
File No.:	0085-SB-RRR-LEE.DGN
Client:	MAR 2016
Reference File:	H-0085-RRR-LEE.DGN
File Name:	

GULF INTRACOSTAL WATERWAY
CALOOSAHEEE RIVER
CALOOSAHEEE COUNTY, FLORIDA

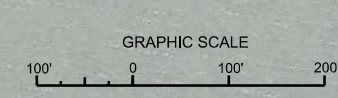
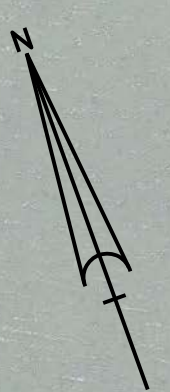
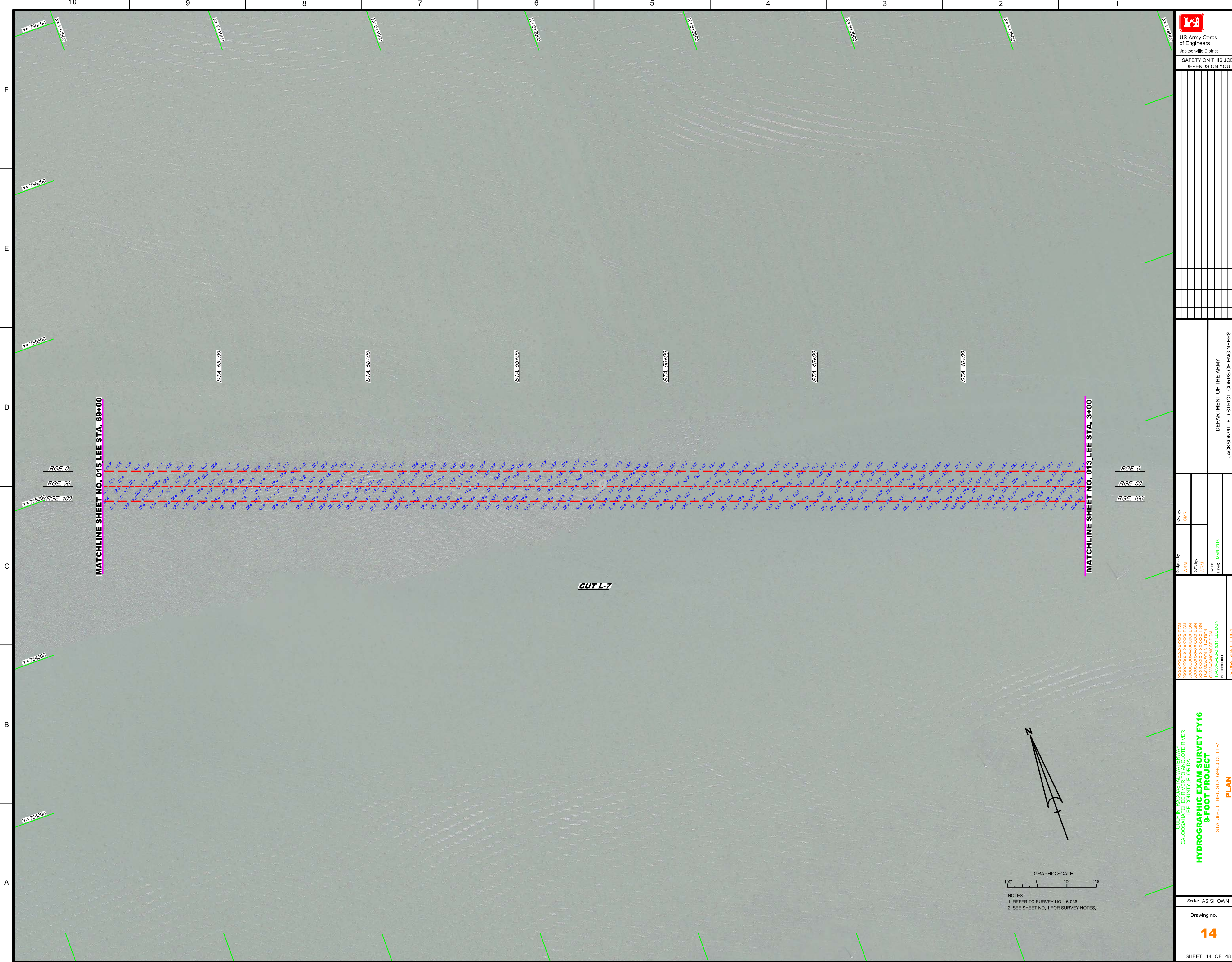
HYDROGRAPHIC EXAM SURVEY FY16
9-FOOT PROJECT

STA. 36+00 THRU STA. 69+00 CUT L-7
PLAN

Scale: AS SHOWN

Drawing no.
14

SHEET 14 OF 48

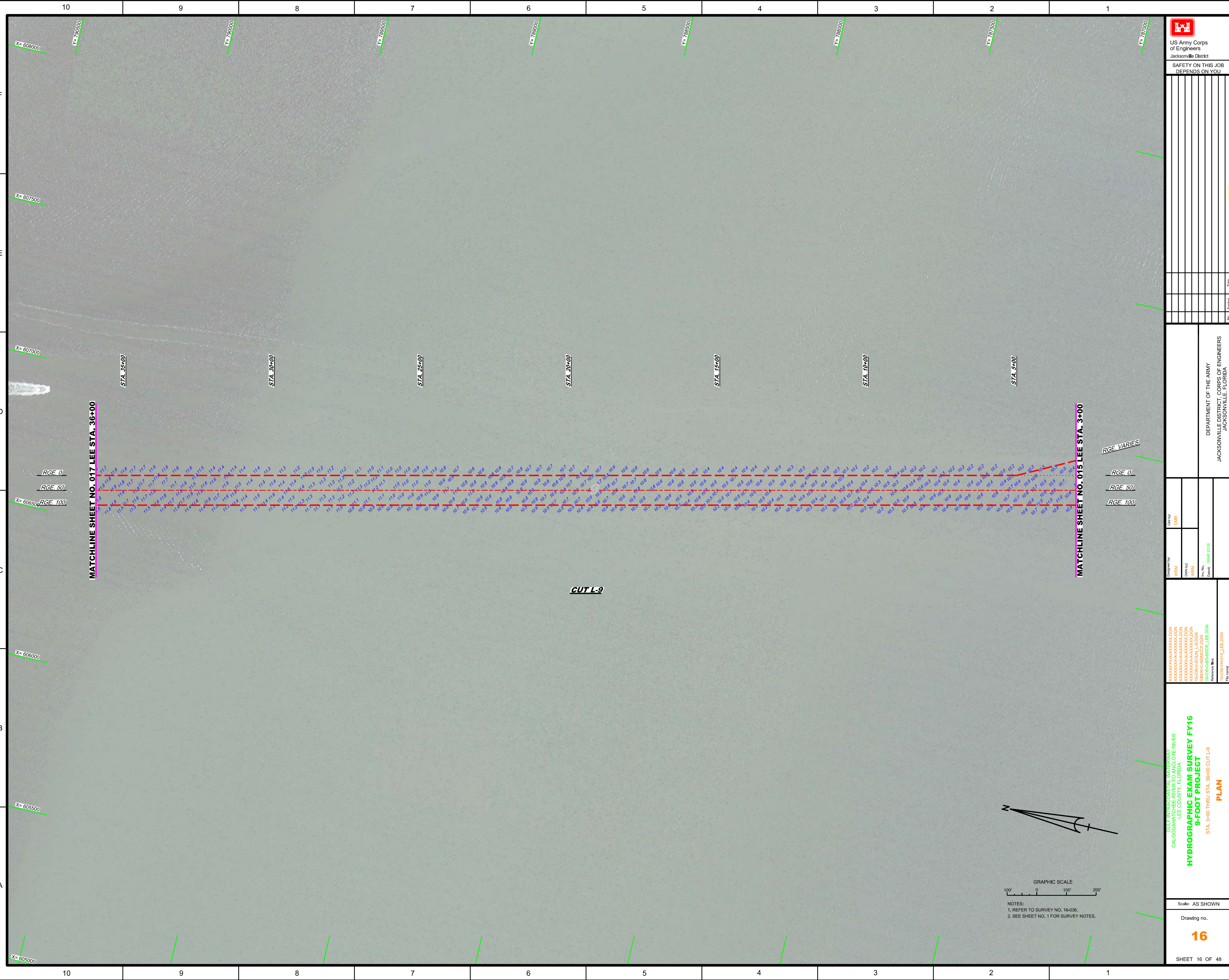


NOTES:
1. REFER TO SURVEY NO. 16-036.
2. SEE SHEET NO. 1 FOR SURVEY NOTES.



AIDS TO NAVIGATION	PLANE COORDINATES		LATITUDE	LONGITUDE
	X	Y		
L-26 (03/16)	607,792	786,215	26°29'47.74"	82°08'52.45"

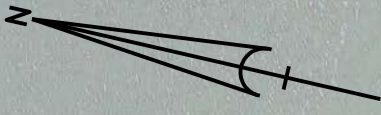
GRAPHIC SCALE
 100' 0 100' 200'
 NOTES:
 1. REFER TO SURVEY NO. 16-036.
 2. SEE SHEET NO. 1 FOR SURVEY NOTES.



MATCHLINE SHEET NO. 017 LEE STA. 36+00

MATCHLINE SHEET NO. 015 LEE STA. 3+00

CUT L-9



NOTES:
1. REFER TO SURVEY NO. 16-036,
2. SEE SHEET NO. 1 FOR SURVEY NOTES.

 US Army Corps of Engineers Jacksonville District SAFETY ON THIS JOB DEPENDS ON YOU																																					
<table border="1"><thead><tr><th>No.</th><th>Symbol</th><th>Zone</th></tr></thead><tbody><tr><td> </td><td> </td><td> </td></tr><tr><td> </td><td> </td><td> </td></tr><tr><td> </td><td> </td><td> </td></tr><tr><td> </td><td> </td><td> </td></tr><tr><td> </td><td> </td><td> </td></tr><tr><td> </td><td> </td><td> </td></tr><tr><td> </td><td> </td><td> </td></tr><tr><td> </td><td> </td><td> </td></tr><tr><td> </td><td> </td><td> </td></tr><tr><td> </td><td> </td><td> </td></tr><tr><td> </td><td> </td><td> </td></tr></tbody></table>		No.	Symbol	Zone																																	
No.	Symbol	Zone																																			
DEPARTMENT OF THE ARMY JACKSONVILLE DISTRICT, CORPS OF ENGINEERS JACKSONVILLE, FLORIDA																																					
Checked By: GHR	Designed By: WRM																																				
Drawn By: WRM	File Name: 16-036-G-SB-RR09_L9E.DGN																																				
Issue Date: MAR 2016	Reference File: 16-036-H401-L9E.DGN																																				
HYDROGRAPHIC EXAM SURVEY FY16 9-FOOT PROJECT PLAN STA. 3+00 THRU STA. 36+00 CUT L-9																																					
Scale: AS SHOWN																																					
Drawing no. 16																																					
SHEET 16 OF 48																																					

10 9 8 7 6 5 4 3 2 1



US Army Corps of Engineers
Jacksonville District

SAFETY ON THIS JOB
DEPENDS ON YOU

No.	Symbol	Zone

DEPARTMENT OF THE ARMY
JACKSONVILLE DISTRICT, CORPS OF ENGINEERS
JACKSONVILLE, FLORIDA

Designed by: WRM Drawn by: WRM File No.: 16-036-BS-BRDR_LEE.DGN Date: MAR 2016	Check by: GHR
---	------------------

GULF INTRACOSTAL WATERWAY
CALOOSAHEE RIVER
CALOOSAHEE COUNTY, FLORIDA

**HYDROGRAPHIC EXAM SURVEY FY16
9-FOOT PROJECT**

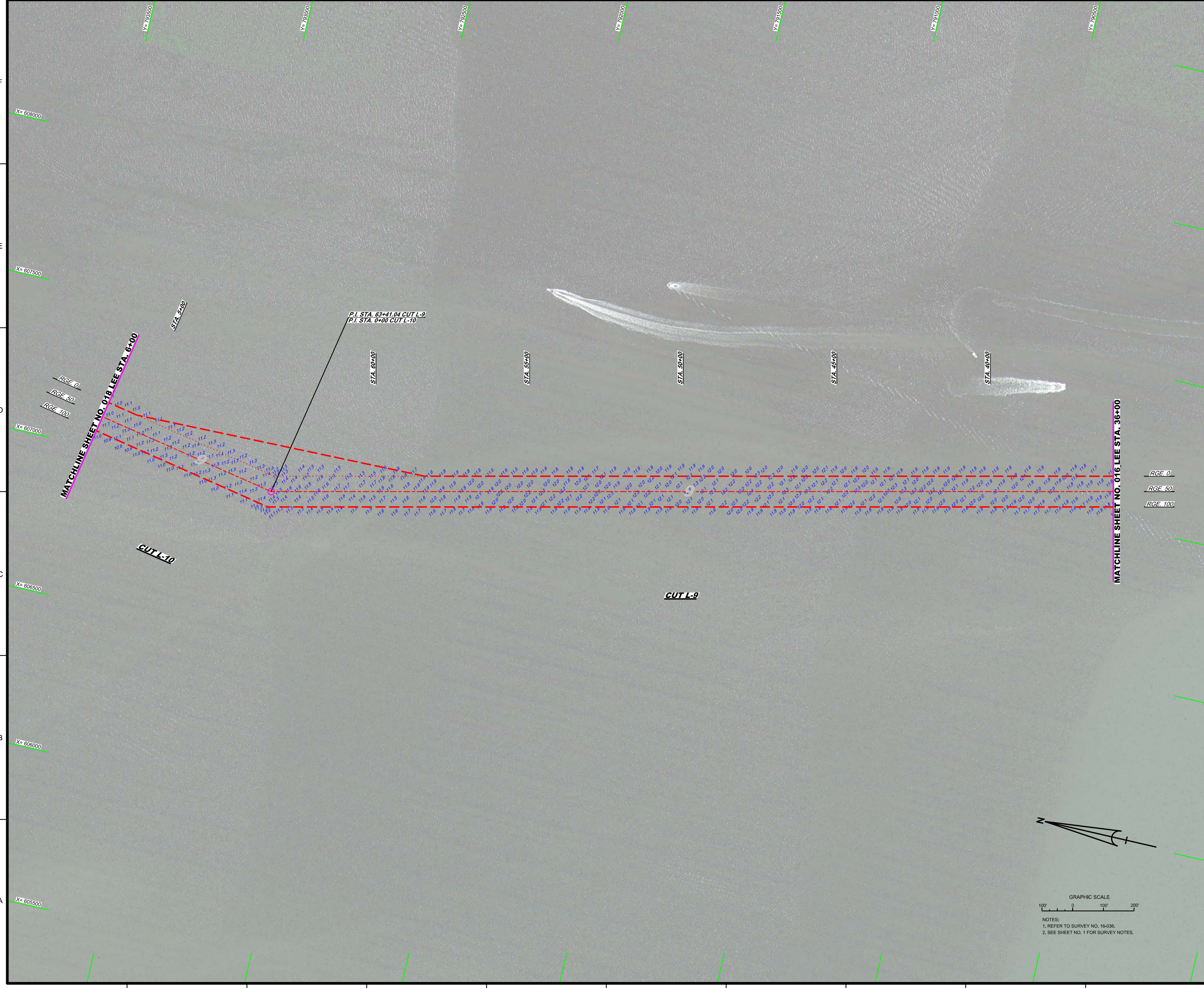
STA. 38+00 CUT L-9 THRU STA. 6+00 CUT L-10
PLAN

Scale: AS SHOWN

Drawing no.
17

SHEET 17 OF 48

F
E
D
C
B
A



X= 608000

X= 607500

X= 607000

X= 606500

X= 606000

X= 605500

Y= 792500

Y= 793000

Y= 793500

Y= 794000

Y= 794500

Y= 795000

Y= 795500

P.I. STA. 63+41.04 CUT L-9
P.I. STA. 0+00 CUT L-10

STA. 5+00

STA. 60+00

STA. 55+00

STA. 50+00

STA. 45+00

STA. 40+00

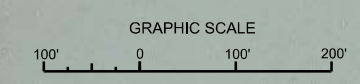
MATCHLINE SHEET NO. 018 LEE STA. 6+00

MATCHLINE SHEET NO. 016 LEE STA. 36+00

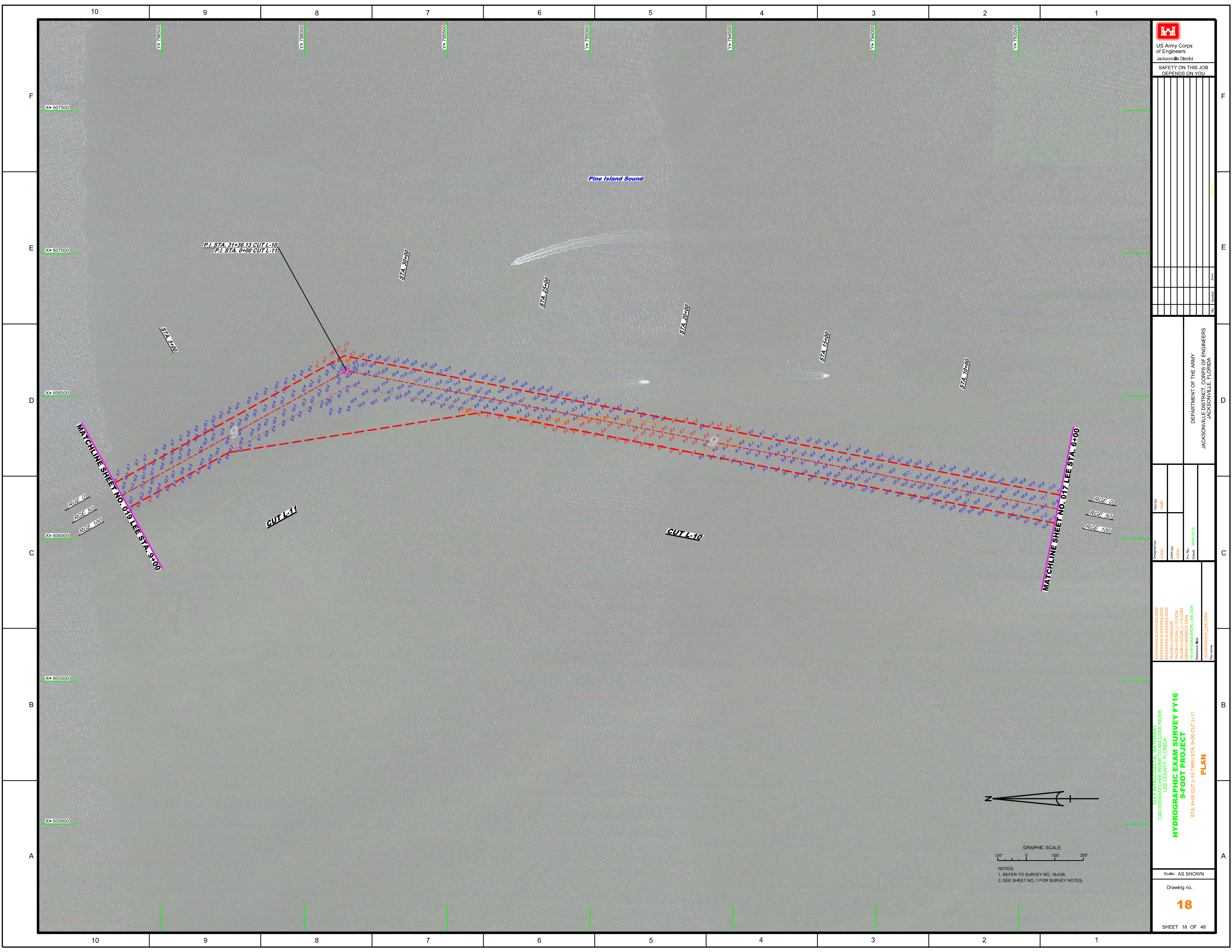
CUT L-10

CUT L-9

RGE 0
RGE 50
RGE 100



NOTES:
1. REFER TO SURVEY NO. 16-036,
2. SEE SHEET NO. 1 FOR SURVEY NOTES.



US Army Corps
of Engineers
Jacksonville District

SAFETY ON THIS JOB
DEPENDS ON YOU

No.	Symbol	Zone

DEPARTMENT OF THE ARMY
JACKSONVILLE DISTRICT, CORPS OF ENGINEERS
JACKSONVILLE, FLORIDA

Checked by:	GHR
Designed by:	WRM
Drawn by:	WRM
Plot Date:	MAR 2016
Plot Date:	MAR 2016

XXXXXXXXXXXXXXXXXXXX.DGN
XXXXXXXXXXXXXXXXXXXX.DGN
XXXXXXXXXXXXXXXXXXXX.DGN
XXXXXXXXXXXXXXXXXXXX.DGN
XXXXXXXXXXXXXXXXXXXX.DGN
XXXXXXXXXXXXXXXXXXXX.DGN
XXXXXXXXXXXXXXXXXXXX.DGN
XXXXXXXXXXXXXXXXXXXX.DGN
XXXXXXXXXXXXXXXXXXXX.DGN
XXXXXXXXXXXXXXXXXXXX.DGN
XXXXXXXXXXXXXXXXXXXX.DGN

**GULF INTRACOASTAL WATERWAY
CALOOSHA LEE COUNTY, FLORIDA**

**HYDROGRAPHIC EXAM SURVEY FY16
9-FOOT PROJECT**

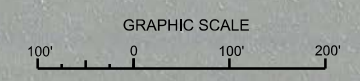
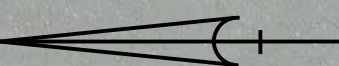
STA. 6+00 CUT L-10 THRU STA. 9+00 CUT L-11
PLAN

Scale: AS SHOWN

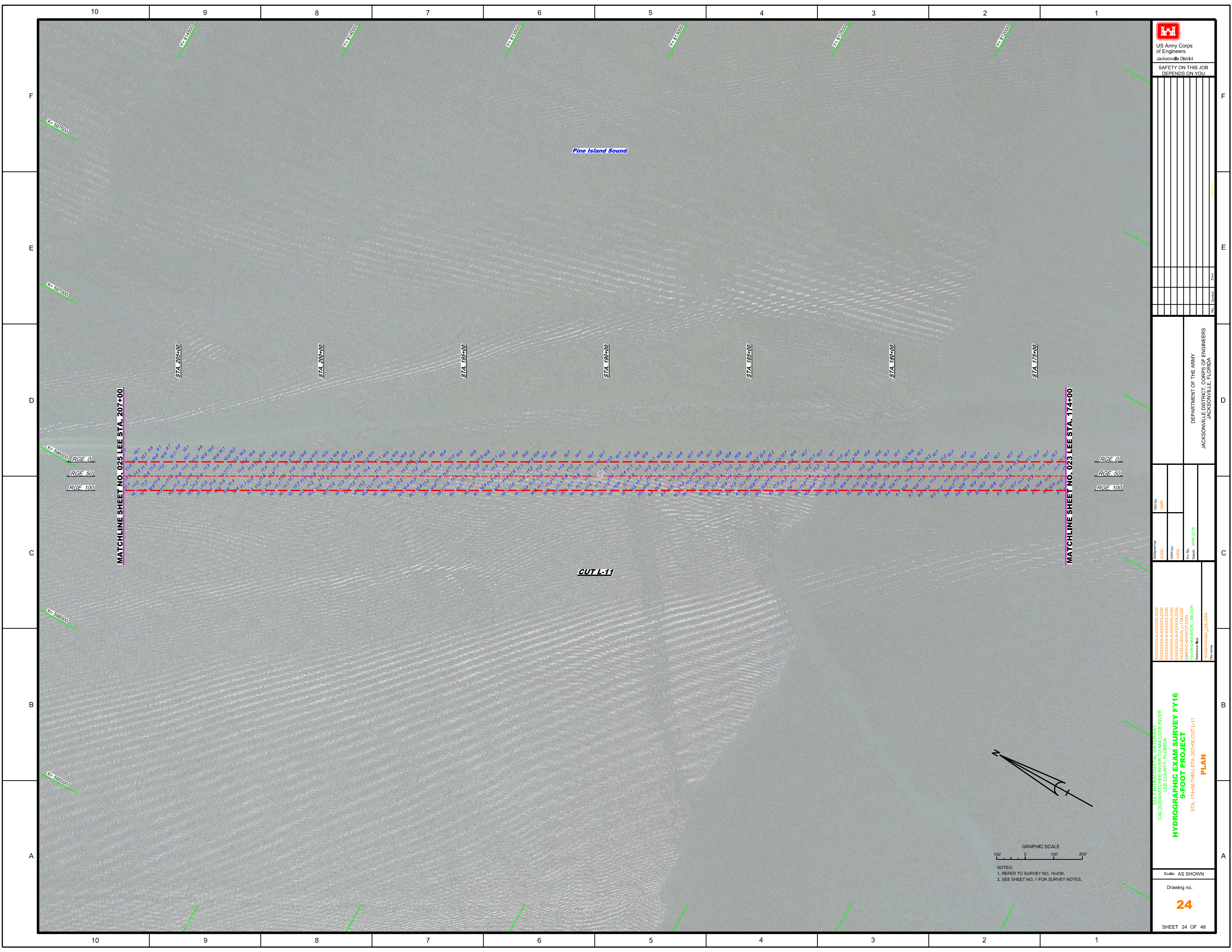
Drawing no.

18

SHEET 18 OF 48



NOTES:
1. REFER TO SURVEY NO. 16-036.
2. SEE SHEET NO. 1 FOR SURVEY NOTES.

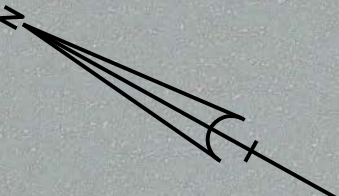


No.	Symbol	Zone

DEPARTMENT OF THE ARMY
JACKSONVILLE DISTRICT, CORPS OF ENGINEERS
JACKSONVILLE, FLORIDA

Checked by:	GHR
Designed by:	WRM
Drawn by:	WRM
File Name:	16-036-00-BS-BRDR_LEE.DGN
Drawn Date:	MAR 2016
Reference File:	16-036-00-BS-BRDR_LEE.DGN
File Name:	16-036-00-BS-BRDR_LEE.DGN

GULF INTRACOASTAL WATERWAY
CALOOSAHATCHEE RIVER
CALOOSAHATCHEE COUNTY, FLORIDA
**HYDROGRAPHIC EXAM SURVEY FY16
9-FOOT PROJECT**
STA. 174+00 THRU STA. 207+00 CUT L-11
PLAN



GRAPHIC SCALE
100' 0 100' 200'
NOTES:
1. REFER TO SURVEY NO. 16-036.
2. SEE SHEET NO. 1 FOR SURVEY NOTES.