

GIWW - CHARLOTTE COUNTY, FLORIDA CUTS C-1 THRU C-9 PROJECT CONDITION SURVEY FY16 9-FOOT PROJECT

SURVEY NOTES

- REFER TO SURVEY NO. 16-035.
 - SOUNDINGS ARE IN FEET AND TENTHS AND REFER TO NOAA'S REPORTED MEAN LOWER LOW WATER (MLLW) OF THE 1983-2001 TIDAL EPOCH.
 - TIDAL REDUCTIONS WERE OBTAINED UTILIZING A REAL-TIME KINEMATIC (RTK) GPS AND REFERENCED TO MLLW UTILIZING A HYPERPACK KINEMATIC TIDE DATUM (KTD) MODEL. KTD FILE NAME IS: "SPC-FL-WEST-2010-12-07.KTD".
 - ALL ELEVATIONS ARE BELOW THE CHART DATUM UNLESS PRECEDED BY A (+) SIGN.
 - PLANE COORDINATES ARE BASED ON THE TRANSVERSE MERCATOR PROJECTION FOR THE WEST ZONE OF FLORIDA AND REFERENCED TO NORTH AMERICAN DATUM OF 1983 (NAD83).
 - ALL STATIONING REFERS TO THE CENTERLINE OF THE CHANNEL.
 - THIS SURVEY WAS PERFORMED USING REAL-TIME KINEMATIC (RTK) GPS POSITIONING WITH THE FOLLOWING REFERENCE BASE LOCATION:
REFERENCE BASE LOCATED AT "872 5685 G" (PID: DM3213)
 - DEPTHS DEPICTED BY THIS SURVEY ARE REFERENCED TO MLLW, TIDAL EPOCH 1983-2001 AS REPORTED BY THE NATIONAL OCEANIC AND ATMOSPHERIC ADMINISTRATION (NOAA). NOAA'S VDATUM MODEL WAS USED AND CALIBRATED TO THE PUBLISHED MLLW HEIGHTS OF THE BENCHMARKS ASSOCIATED WITH THE TIDE GAGE SITES SPECIFIED BELOW:

NOAA TIDAL STATION 872 5685 USED FOR CUTS C1-C9. (PID: DM3213)
VERTICAL MEASUREMENTS WERE MADE USING AN EDGETECH 6205 COMBINED MULT-BEAM AND SIDESCAN. ALL SOUNDINGS SHOWN ARE IN HIGH FREQUENCY.
- | VESSEL | DATE OF SURVEY | CUT |
|--------|----------------|--------------|
| SB-48 | 03 MAR 2016 | C-5 THRU C-9 |
| SB-48 | 04 MAR 2016 | C-1 THRU C-4 |
- AIDS TO NAVIGATION WERE LOCATED DURING THIS SURVEY.
 - THE INFORMATION DEPICTED ON THIS MAP REPRESENTS THE RESULTS OF SURVEYS MADE ON THE DATES INDICATED ABOVE AND CAN ONLY BE CONSIDERED AS INDICATING THE GENERAL CONDITIONS AT THAT TIME. THIS CHART IS SOLELY FOR THE DISTRIBUTION OF AVAILABLE DEPTHS AT THE TIME OF THE SURVEY.
 - SURVEY ACCURACY PERFORMANCE STANDARDS, QUALITY CONTROL AND QUALITY ASSURANCE REQUIREMENTS WERE FOLLOWED DURING THIS SURVEY IN ACCORDANCE WITH USACE EM 1110-2-1003, HYDROGRAPHIC SURVEYING, 30 NOV 13.

LEGEND

▲	MONUMENT
⬇	LIGHTED BEACON
■	GREEN DAYBEACON
▲	RED DAYBEACON
⦿	RED LIGHTED BUOY
⦿	GREEN LIGHTED BUOY
⦿	CAN BUOY
⦿	NUN BUOY
⦿	TIDE STAFF
8	PROJECT DEPTH

US Army Corps of Engineers
Jacksonville District
SAFETY ON THIS JOB DEPENDS ON YOU

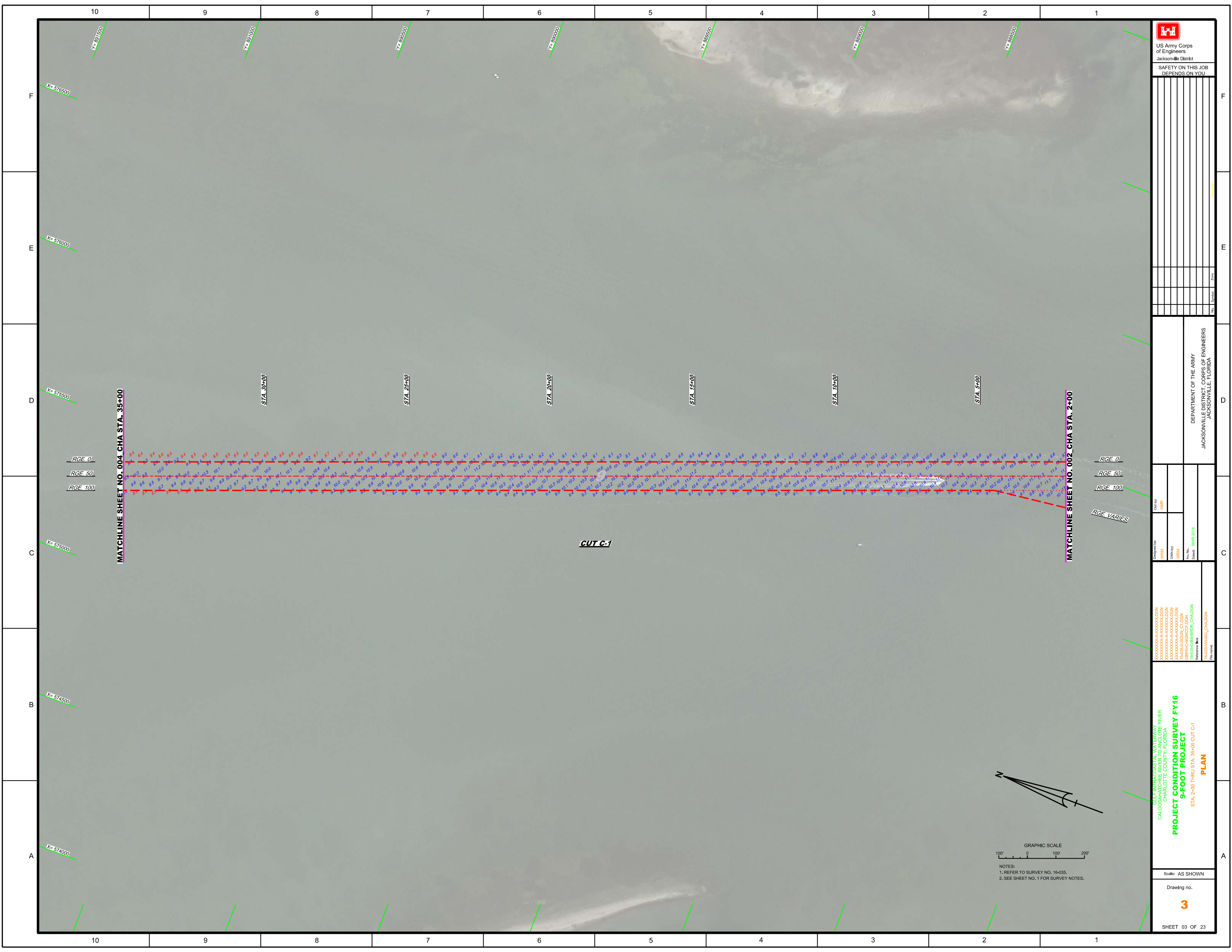
DEPARTMENT OF THE ARMY
JACKSONVILLE DISTRICT CORPS OF ENGINEERS
JACKSONVILLE, FLORIDA


Checked By:	GHR
Designed By:	WRM
Drawn By:	WRM
File No:	WRM-CG-WGT2.DGN
Drawn Date:	MAR 2016
Reference File:	16-035-1607_CHA.DGN
File Name:	16-035-1607_CHA.DGN

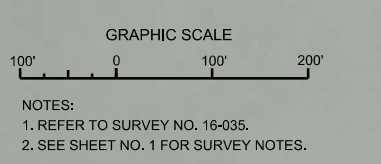
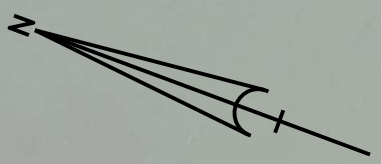
GULF INTRACOSTAL WATERWAY RIVER
CALOOCHEE RIVER
CHARLOTTE COUNTY FLORIDA

**PROJECT CONDITION SURVEY FY16
9-FOOT PROJECT**

Scale: AS SHOWN
Drawing no. **G-001**
SHEET XX OF XX




 US Army Corps of Engineers Jacksonville District																																		
SAFETY ON THIS JOB DEPENDS ON YOU																																		
<table border="1"><thead><tr><th>No.</th><th>Symbol</th><th>Zone</th></tr></thead><tbody><tr><td> </td><td> </td><td> </td></tr><tr><td> </td><td> </td><td> </td></tr><tr><td> </td><td> </td><td> </td></tr><tr><td> </td><td> </td><td> </td></tr><tr><td> </td><td> </td><td> </td></tr><tr><td> </td><td> </td><td> </td></tr><tr><td> </td><td> </td><td> </td></tr><tr><td> </td><td> </td><td> </td></tr><tr><td> </td><td> </td><td> </td></tr><tr><td> </td><td> </td><td> </td></tr></tbody></table>		No.	Symbol	Zone																														
No.	Symbol	Zone																																
DEPARTMENT OF THE ARMY JACKSONVILLE DISTRICT, CORPS OF ENGINEERS JACKSONVILLE, FLORIDA																																		
Checked By: GHR	Date: MAR 2016																																	
Designed By: WRM	Drawn By: WRM																																	
Reference Files: R:\0355-HR001_CHA.DGN R:\0355-HR001_CHA.DGN R:\0355-HR001_CHA.DGN R:\0355-HR001_CHA.DGN R:\0355-HR001_CHA.DGN R:\0355-HR001_CHA.DGN R:\0355-HR001_CHA.DGN R:\0355-HR001_CHA.DGN R:\0355-HR001_CHA.DGN	File Name: R:\0355-HR001_CHA.DGN																																	
PROJECT CONDITION SURVEY FY16 9-FOOT PROJECT PLAN																																		
Scale: AS SHOWN																																		
Drawing no. 3																																		
SHEET 03 OF 23																																		



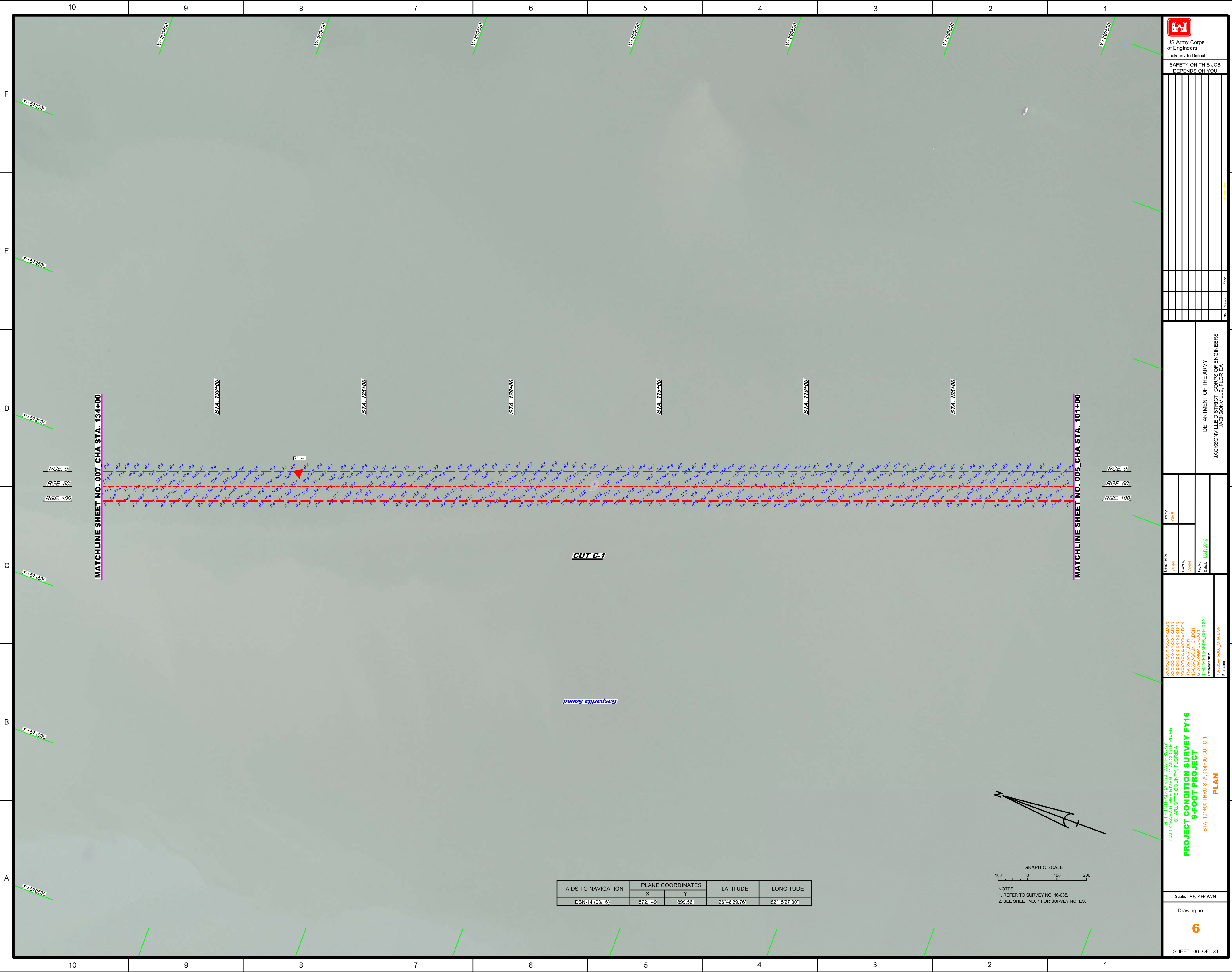
NOTES:
1. REFER TO SURVEY NO. 16-035.
2. SEE SHEET NO. 1 FOR SURVEY NOTES.

F
E
D
C
B
A

10 9 8 7 6 5 4 3 2 1

 <p>US Army Corps of Engineers Jacksonville District</p> <p>SAFETY ON THIS JOB DEPENDS ON YOU</p>	
<p>DEPARTMENT OF THE ARMY JACKSONVILLE DISTRICT, CORPS OF ENGINEERS JACKSONVILLE, FLORIDA</p>	<p>Check by: GHR</p> <p>Designed by: WRM</p> <p>DRAWN BY: WRM</p> <p>File No: 16-035</p> <p>Date: MAR 2016</p>
<p>XXXXXXXXXXXXXXXXXXXX.DGN XXXXXXXXXXXXXXXXXXXX.DGN XXXXXXXXXXXXXXXXXXXX.DGN XXXXXXXXXXXXXXXXXXXX.DGN XXXXXXXXXXXXXXXXXXXX.DGN XXXXXXXXXXXXXXXXXXXX.DGN XXXXXXXXXXXXXXXXXXXX.DGN XXXXXXXXXXXXXXXXXXXX.DGN XXXXXXXXXXXXXXXXXXXX.DGN XXXXXXXXXXXXXXXXXXXX.DGN</p>	<p>Reference files: 16-035-HR02_CHA.DGN 16-035-HR02_CHA.DGN</p>
<p>GULF INTRACOSTAL WATERWAY RIVER CALOOCHEE RIVER CHARLOTTE COUNTY, FLORIDA</p> <p>PROJECT CONDITION SURVEY FY16 9-FOOT PROJECT STA. 68+00 THRU STA. 101+00 CUT C-1</p> <p>PLAN</p>	
Scale: AS SHOWN	Drawing no.
5	
SHEET 05 OF 23	





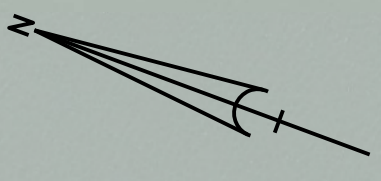
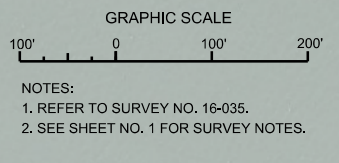
Rev.	Symbol	Description

DEPARTMENT OF THE ARMY
 JACKSONVILLE DISTRICT, CORPS OF ENGINEERS
 JACKSONVILLE, FLORIDA

Checked by:	GHR
Designed by:	WRM
DRAWN BY:	WRM
Date:	MAR 2016
File name:	R:\0355-HR06_CHA.DGN

GULF INTERCOASTAL WATERWAY
 CALOOCHEE RIVER
 CHARLOTTE COUNTY, FLORIDA
PROJECT CONDITION SURVEY FY16
9-FOOT PROJECT
 STA. 101+00 THRU STA. 134+00 CUT C-1
PLAN

AIDS TO NAVIGATION	PLANE COORDINATES		LATITUDE	LONGITUDE
	X	Y		
DBN-14 (03/16)	572.149	899.561	26°48'29.76"	82°15'27.30"





P.I. STA. 164+62.74 CUT C-1
P.I. STA. 0+00 CUT C-2

CUT C-2

CUT C-1

MATCHLINE SHEET NO. 007_CHA STA. 167+00

RGE. 0
RGE. 50
RGE. 100

MATCHLINE SHEET NO. 009_CHA STA. 9+00

RGE VARIES
RGE. 20
RGE VARIES

AIDS TO NAVIGATION	PLANE COORDINATES		LATITUDE	LONGITUDE
	X	Y		
DBN-19 (03/16)	569,955	905,151	26°49'25.08"	82°15'51.65"
LT-20 (03/16)	569,909	905,755	26°49'31.06"	82°15'52.16"

GRAPHIC SCALE
100' 0 100' 200'

NOTES:
1. REFER TO SURVEY NO. 16-035.
2. SEE SHEET NO. 1 FOR SURVEY NOTES.

US Army Corps
of Engineers
Jacksonville District
 SAFETY ON THIS JOB
DEPENDS ON YOU

Designed by: WRM

DWY by: WRM

Checked by: WRM

Date: MAR 2016

XXXXXXXXXXXXXXXXXXXX.DGN
XXXXXXXXXXXXXXXXXXXX.DGN
XXXXXXXXXXXXXXXXXXXX.DGN
R-035A-AV.DGN
R-035A-SOIA_C1.DGN
R-035A-SOIA_C2.DGN
R-035A-SOIA_C3.DGN
R-035A-SOIA_C4.DGN
R-035A-SOIA_C5.DGN
R-035A-SOIA_C6.DGN
R-035A-SOIA_C7.DGN
R-035A-SOIA_C8.DGN
R-035A-SOIA_C9.DGN
R-035A-SOIA_C10.DGN
R-035A-SOIA_C11.DGN
R-035A-SOIA_C12.DGN
R-035A-SOIA_C13.DGN
R-035A-SOIA_C14.DGN
R-035A-SOIA_C15.DGN
R-035A-SOIA_C16.DGN
R-035A-SOIA_C17.DGN
R-035A-SOIA_C18.DGN
R-035A-SOIA_C19.DGN
R-035A-SOIA_C20.DGN
R-035A-SOIA_C21.DGN
R-035A-SOIA_C22.DGN
R-035A-SOIA_C23.DGN
R-035A-SOIA_C24.DGN
R-035A-SOIA_C25.DGN
R-035A-SOIA_C26.DGN
R-035A-SOIA_C27.DGN
R-035A-SOIA_C28.DGN
R-035A-SOIA_C29.DGN
R-035A-SOIA_C30.DGN
R-035A-SOIA_C31.DGN
R-035A-SOIA_C32.DGN
R-035A-SOIA_C33.DGN
R-035A-SOIA_C34.DGN
R-035A-SOIA_C35.DGN
R-035A-SOIA_C36.DGN
R-035A-SOIA_C37.DGN
R-035A-SOIA_C38.DGN
R-035A-SOIA_C39.DGN
R-035A-SOIA_C40.DGN
R-035A-SOIA_C41.DGN
R-035A-SOIA_C42.DGN
R-035A-SOIA_C43.DGN
R-035A-SOIA_C44.DGN
R-035A-SOIA_C45.DGN
R-035A-SOIA_C46.DGN
R-035A-SOIA_C47.DGN
R-035A-SOIA_C48.DGN
R-035A-SOIA_C49.DGN
R-035A-SOIA_C50.DGN
R-035A-SOIA_C51.DGN
R-035A-SOIA_C52.DGN
R-035A-SOIA_C53.DGN
R-035A-SOIA_C54.DGN
R-035A-SOIA_C55.DGN
R-035A-SOIA_C56.DGN
R-035A-SOIA_C57.DGN
R-035A-SOIA_C58.DGN
R-035A-SOIA_C59.DGN
R-035A-SOIA_C60.DGN
R-035A-SOIA_C61.DGN
R-035A-SOIA_C62.DGN
R-035A-SOIA_C63.DGN
R-035A-SOIA_C64.DGN
R-035A-SOIA_C65.DGN
R-035A-SOIA_C66.DGN
R-035A-SOIA_C67.DGN
R-035A-SOIA_C68.DGN
R-035A-SOIA_C69.DGN
R-035A-SOIA_C70.DGN
R-035A-SOIA_C71.DGN
R-035A-SOIA_C72.DGN
R-035A-SOIA_C73.DGN
R-035A-SOIA_C74.DGN
R-035A-SOIA_C75.DGN
R-035A-SOIA_C76.DGN
R-035A-SOIA_C77.DGN
R-035A-SOIA_C78.DGN
R-035A-SOIA_C79.DGN
R-035A-SOIA_C80.DGN
R-035A-SOIA_C81.DGN
R-035A-SOIA_C82.DGN
R-035A-SOIA_C83.DGN
R-035A-SOIA_C84.DGN
R-035A-SOIA_C85.DGN
R-035A-SOIA_C86.DGN
R-035A-SOIA_C87.DGN
R-035A-SOIA_C88.DGN
R-035A-SOIA_C89.DGN
R-035A-SOIA_C90.DGN
R-035A-SOIA_C91.DGN
R-035A-SOIA_C92.DGN
R-035A-SOIA_C93.DGN
R-035A-SOIA_C94.DGN
R-035A-SOIA_C95.DGN
R-035A-SOIA_C96.DGN
R-035A-SOIA_C97.DGN
R-035A-SOIA_C98.DGN
R-035A-SOIA_C99.DGN
R-035A-SOIA_C100.DGN

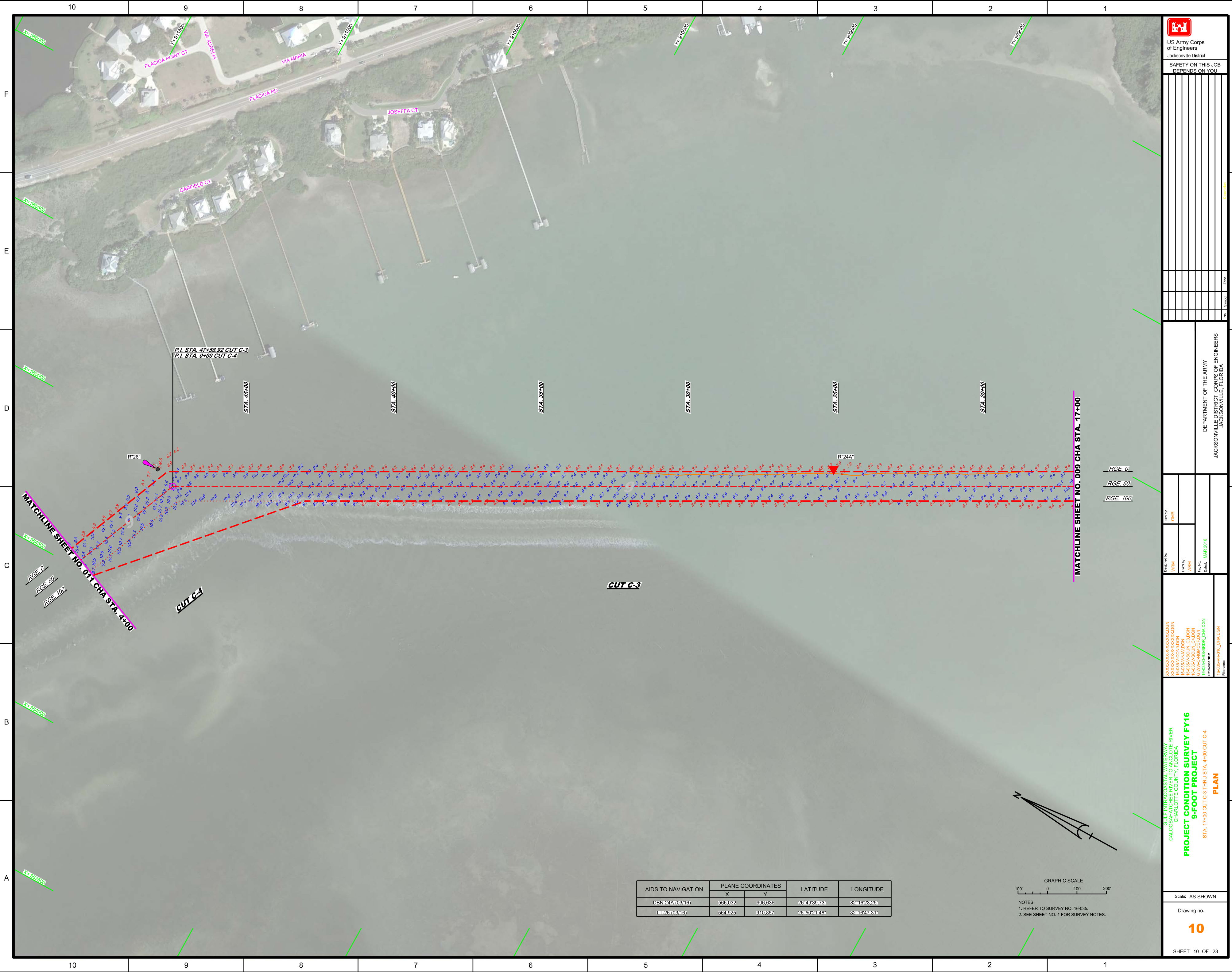
DEPARTMENT OF THE ARMY
JACKSONVILLE DISTRICT, CORPS OF ENGINEERS
JACKSONVILLE, FLORIDA


GULF INTRACASTAL WATERWAY
RIVER
CHARLOTTE COUNTY, FLORIDA
PROJECT CONDITION SURVEY FY16
9-FOOT PROJECT
STA. 167+00 CUT C-1 THRU STA. 9+00 CUT C-2
PLAN

Scale: AS SHOWN

Drawing no.
8

SHEET 08 OF 23





 US Army Corps of Engineers
 Jacksonville District
 SAFETY ON THIS JOB
 DEPENDS ON YOU

DEPARTMENT OF THE ARMY
 JACKSONVILLE DISTRICT, CORPS OF ENGINEERS
 JACKSONVILLE, FLORIDA

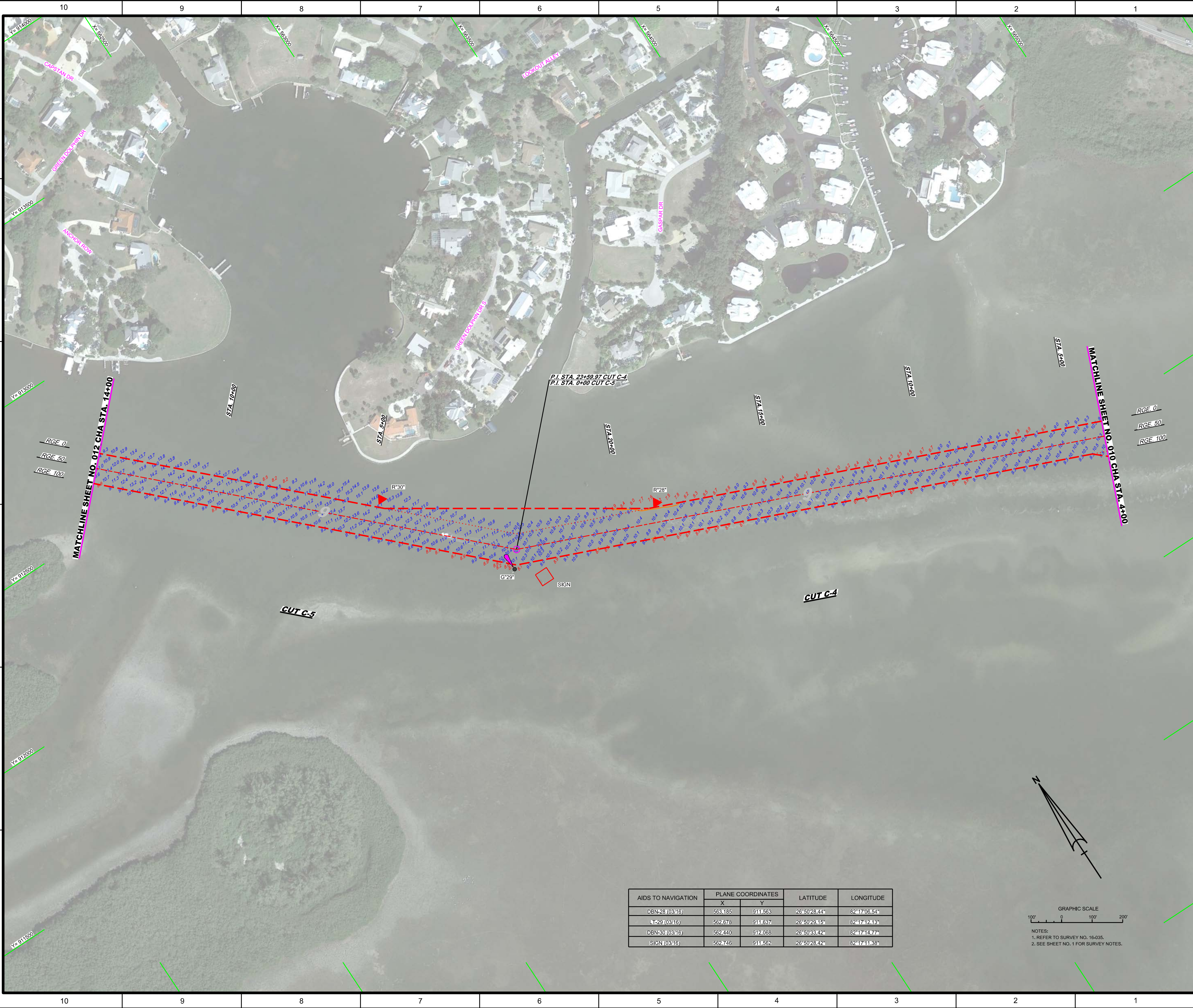
Designed by: WRM
 Drawn by: WRM
 Checked: MAR 2016
 File name: R:\0355\H01\CHASDN

GULF INTRACASTAL WATERWAY RIVER
 CALOOCHEE RIVER
 CHARLOTTE COUNTY, FLORIDA
PROJECT CONDITION SURVEY FY16
9-FOOT PROJECT
 STA. 17+00 CUT C-3 THRU STA. 4+00 CUT C-4
PLAN

Scale: AS SHOWN
 Drawing no.
10
 SHEET 10 OF 23

AIDS TO NAVIGATION	PLANE COORDINATES		LATITUDE	LONGITUDE
	X	Y		
DBN-24A (03/16)	566,032	906,636	26°49'39.73"	82°16'23.25"
LT-26 (03/16)	564,925	910,857	26°50'21.45"	82°16'47.31"

GRAPHIC SCALE
 100' 0 100' 200'
 NOTES:
 1. REFER TO SURVEY NO. 16-035.
 2. SEE SHEET NO. 1 FOR SURVEY NOTES.



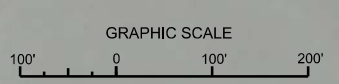
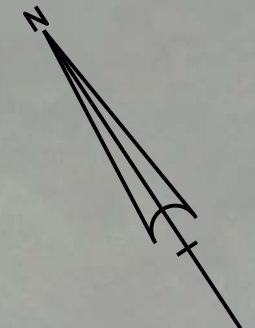
US Army Corps of Engineers
 Jacksonville District
 SAFETY ON THIS JOB
 DEPENDS ON YOU

DEPARTMENT OF THE ARMY
 JACKSONVILLE DISTRICT, CORPS OF ENGINEERS
 JACKSONVILLE, FLORIDA

Checked by: GHR
 Designed by: WRM
 Drawn by: WRM
 File No: MAR 2016
 Date: MAR 2016


GULF INTRACASTAL WATERWAY RIVER
 CALOOCHEE RIVER
 CHARLOTTE COUNTY, FLORIDA
PROJECT CONDITION SURVEY FY16
9-FOOT PROJECT
 STA. 4+00 CUT C-4 THRU STA. 14+00 CUT C-5
PLAN

AIDS TO NAVIGATION	PLANE COORDINATES		LATITUDE	LONGITUDE
	X	Y		
DBN28 (03/16)	563.185	911.563	26°50'28.44"	82°17'06.54"
LT29 (03/16)	562.676	911.637	26°50'29.15"	82°17'12.16"
DBN30 (03/16)	562.440	912.068	26°50'33.42"	82°17'14.77"
SIGN (03/16)	562.746	911.562	26°50'28.42"	82°17'11.38"



NOTES:
 1. REFER TO SURVEY NO. 16-035.
 2. SEE SHEET NO. 1 FOR SURVEY NOTES.

Scale: AS SHOWN
 Drawing no.
11
 SHEET 11 OF 23

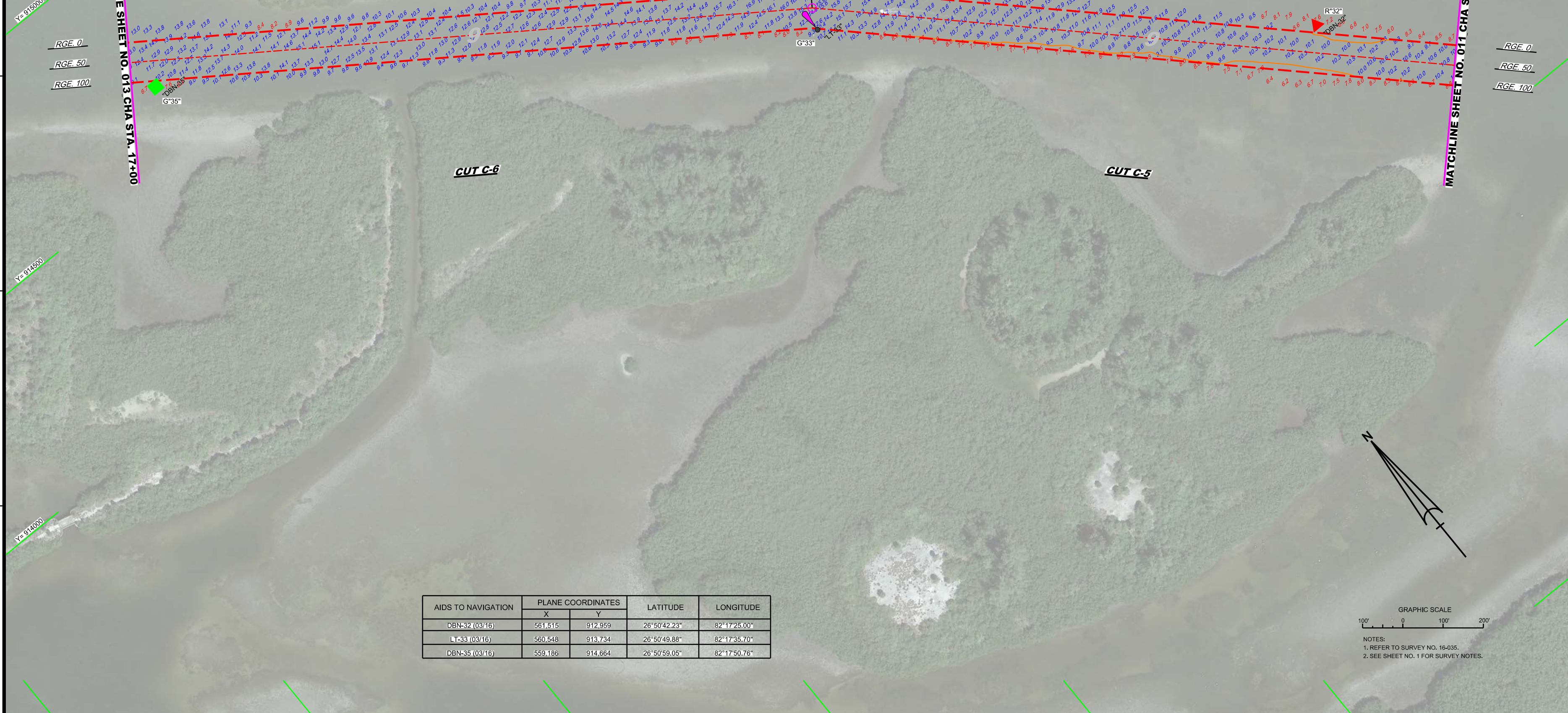
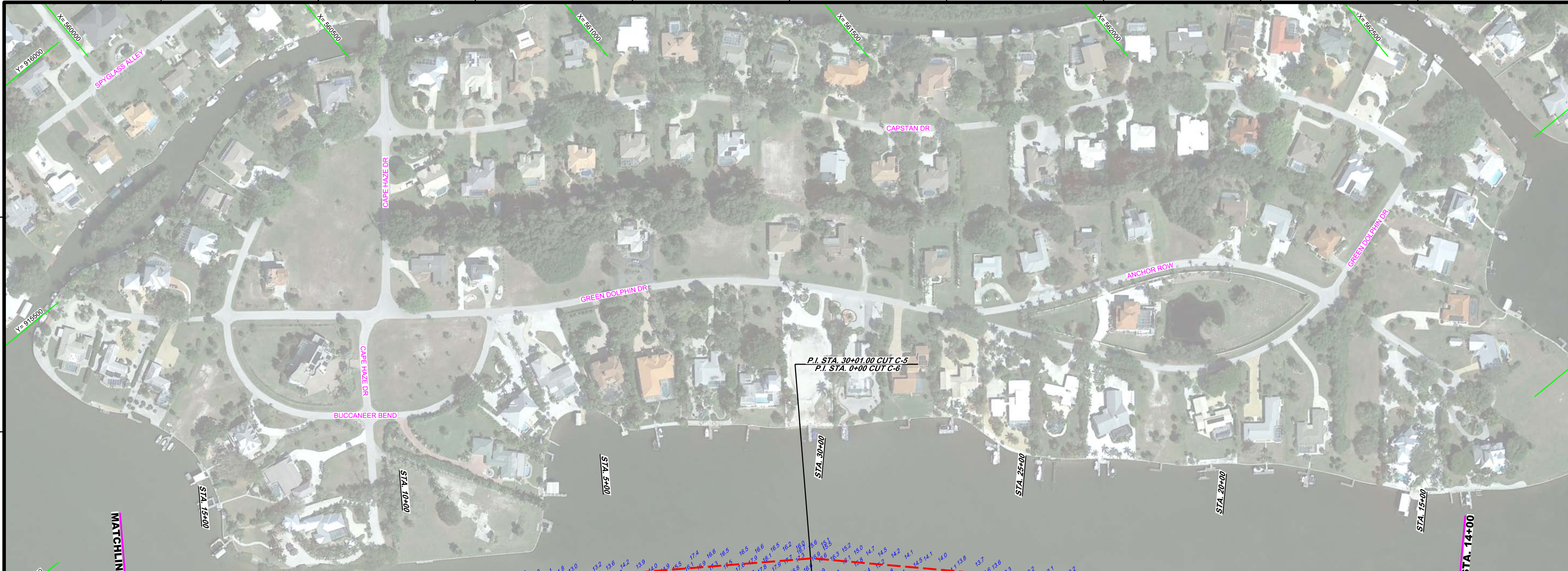
 US Army Corps of Engineers Jacksonville District
SAFETY ON THIS JOB DEPENDS ON YOU
No. Symbol
No. Symbol
No. Symbol
No. Symbol
No. Symbol
No. Symbol
No. Symbol
No. Symbol
No. Symbol
No. Symbol
No. Symbol
No. Symbol
No. Symbol
No. Symbol
No. Symbol
No. Symbol
No. Symbol

DEPARTMENT OF THE ARMY
 JACKSONVILLE DISTRICT, CORPS OF ENGINEERS
 JACKSONVILLE, FLORIDA

Check By: GHR
 Designed By: WRM
 Drawn By: WRM
 File No.: 16-035-BS-RRR2_CHA.DGN
 Date: MAR 2016
 Reference File: 16-035-PR12_CHA.DGN
 File Name:

GULF INTRACASTAL WATERWAY RIVER
 CALOOCHEE RIVER
 CHARLOTTE COUNTY, FLORIDA
**PROJECT CONDITION SURVEY FY16
 9-FOOT PROJECT**
 STA. 44+00 CUT C-5 THRU STA. 17+00 CUT C-6
PLAN

Scale: AS SHOWN
 Drawing no.
12
 SHEET 12 OF 23



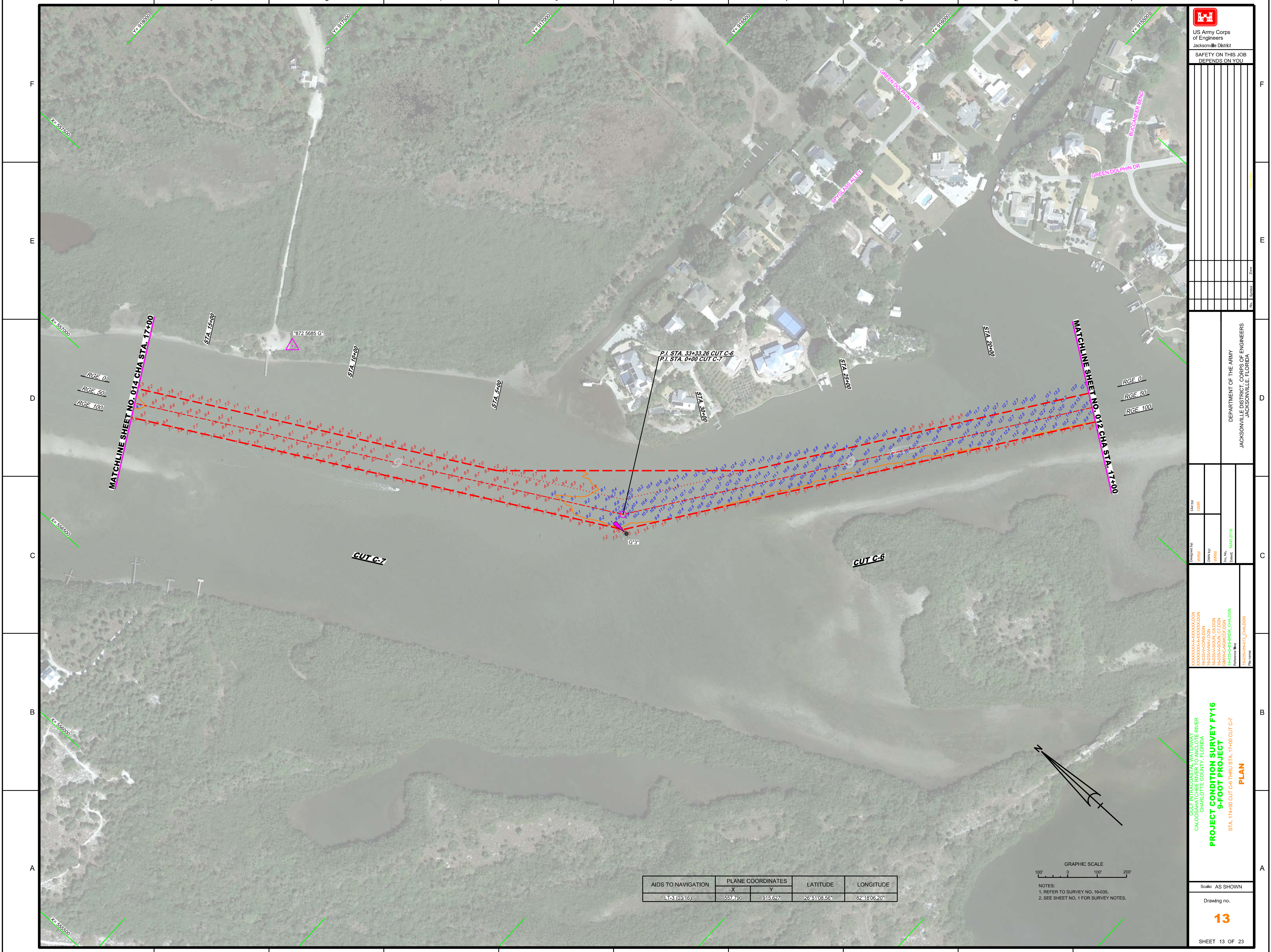
AIDS TO NAVIGATION	PLANE COORDINATES		LATITUDE	LONGITUDE
	X	Y		
DBN-32 (03/16)	561,515	912,959	26°50'42.23"	82°17'25.00"
LT-33 (03/16)	560,546	913,734	26°50'49.88"	82°17'35.70"
DBN-35 (03/16)	559,186	914,664	26°50'59.05"	82°17'50.76"

GRAPHIC SCALE
 100' 0 100' 200'
 NOTES:
 1. REFER TO SURVEY NO. 16-035.
 2. SEE SHEET NO. 1 FOR SURVEY NOTES.

10 9 8 7 6 5 4 3 2 1

F
E
D
C
B
A

10 9 8 7 6 5 4 3 2 1



 US Army Corps of Engineers Jacksonville District	
SAFETY ON THIS JOB DEPENDS ON YOU	

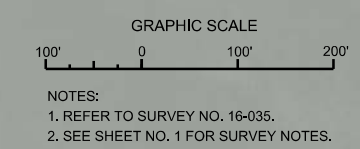
DEPARTMENT OF THE ARMY
JACKSONVILLE DISTRICT, CORPS OF ENGINEERS
JACKSONVILLE, FLORIDA

Checked by:	CHIR
Designed by:	WRM
DRAWN BY:	WRM
Date:	MAR 2016

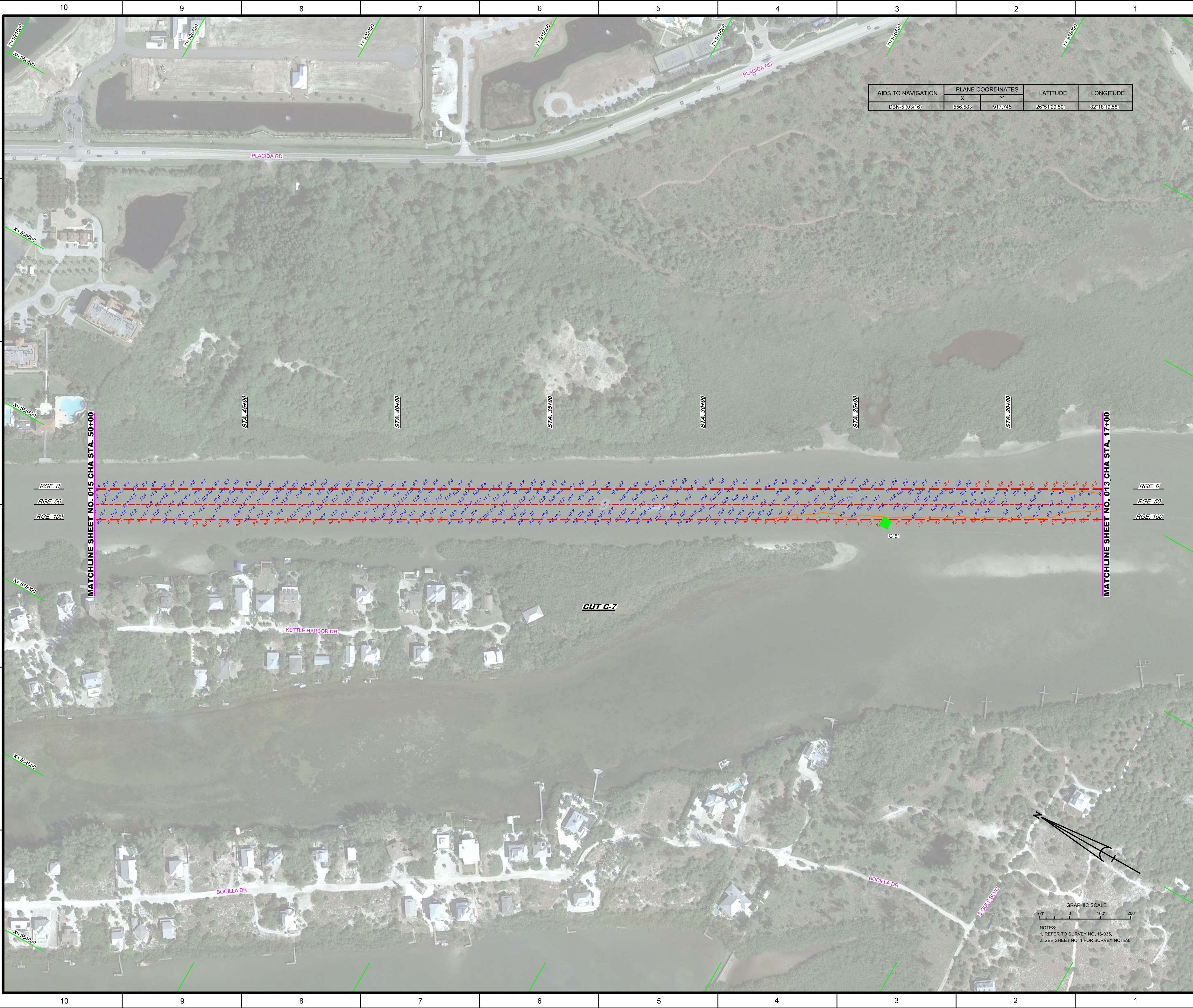
XXXXXXXXXXXXXXXXXXXX	XXXXXXXXXXXXXXXXXXXX
XXXXXXXXXXXXXXXXXXXX	XXXXXXXXXXXXXXXXXXXX
XXXXXXXXXXXXXXXXXXXX	XXXXXXXXXXXXXXXXXXXX
XXXXXXXXXXXXXXXXXXXX	XXXXXXXXXXXXXXXXXXXX
XXXXXXXXXXXXXXXXXXXX	XXXXXXXXXXXXXXXXXXXX
XXXXXXXXXXXXXXXXXXXX	XXXXXXXXXXXXXXXXXXXX
XXXXXXXXXXXXXXXXXXXX	XXXXXXXXXXXXXXXXXXXX

PROJECT CONDITION SURVEY FY16
9-FOOT PROJECT
PLAN
STA. 174+00 CUT C-6 THRU STA. 17+00 CUT C-7

AIDS TO NAVIGATION	PLANE COORDINATES		LATITUDE	LONGITUDE
	X	Y		
L1-3 (0316)	557,790	915,627	26°51'08.56"	82°18'06.20"



10 9 8 7 6 5 4 3 2 1



AIDS TO NAVIGATION	PLANE COORDINATES		LATITUDE	LONGITUDE
	X	Y		
DBN-5 (0316)	556,583	917,745	26° 51' 29.50"	82° 18' 19.58"

US Army Corps of Engineers
 Jacksonville District
 SAFETY ON THIS JOB
 DEPENDS ON YOU

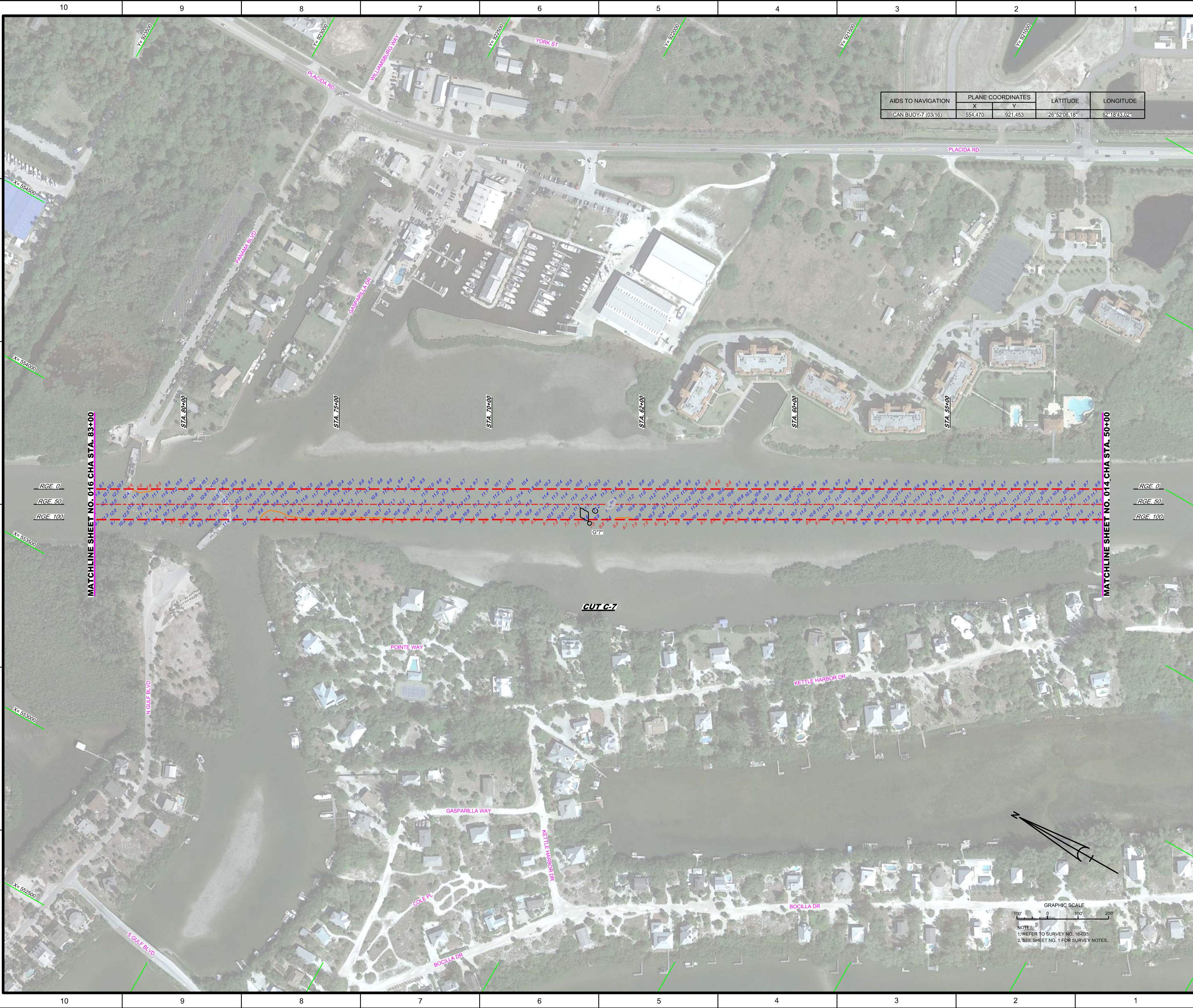
DEPARTMENT OF THE ARMY
 JACKSONVILLE DISTRICT, CORPS OF ENGINEERS
 JACKSONVILLE, FLORIDA

Checked by: GHR
 Designed by: WRM
 Drawn by: WRM
 File No.: 16-035-BAV-DGN
 Date: MAR 2016

GULF INTRACOSTAL WATERWAY RIVER
 CALOOCHEE COUNTY, FLORIDA
PROJECT CONDITION SURVEY FY16
9-FOOT PROJECT
 STA. 17+00 THRU STA. 50+00 CUT C-7
PLAN

Scale: AS SHOWN
 Drawing no.
14
 SHEET 14 OF 23

GRAPHIC SCALE
 100' 0' 100' 200'
 NOTES:
 1. REFER TO SURVEY NO. 16-035.
 2. SEE SHEET NO. 1 FOR SURVEY NOTES.



AIDS TO NAVIGATION	PLANE COORDINATES		LATITUDE	LONGITUDE
	X	Y		
CAN BUOY-7 (03/16)	554,470	921,453	26°52'06.16"	82°18'43.02"

US Army Corps
of Engineers
Jacksonville District

SAFETY ON THIS JOB
DEPENDS ON YOU

Checked By: GHR

Designed By: WRM

DRAWN BY: WRM

File No: 16-035

Drawn Date: MAR 2016

XXXXXXXXXXXXXXXXXXXX.DGN

XXXXXXXXXXXXXXXXXXXX.DGN

XXXXXXXXXXXXXXXXXXXX.DGN

R-0355-HAV.DGN

R-0355-CHW.DGN

R-0355-BS-STRK_CHA.DGN

R-0355-HR1_L_CHA.DGN

GULF INTRACOASTAL WATERWAY RIVER
CALOOCHEE RIVER
CHARLOTTE COUNTY, FLORIDA

PROJECT CONDITION SURVEY FY16
9-FOOT PROJECT

STA. 50+00 THRU STA. 83+00 CUT C-7

PLAN

Scale: AS SHOWN

Drawing no.

15

SHEET 15 OF 23



AIDS TO NAVIGATION	PLANE COORDINATES		LATITUDE	LONGITUDE
	X	Y		
DBN-8 (03/16)	553,489	924,416	26°52'25.59"	82°18'53.90"
DBN-9 (03/16)	552,740	924,520	26°52'36.51"	82°19'02.21"



US Army Corps of Engineers
Jacksonville District

SAFETY ON THIS JOB
DEPENDS ON YOU

DEPARTMENT OF THE ARMY
JACKSONVILLE DISTRICT, CORPS OF ENGINEERS
JACKSONVILLE, FLORIDA

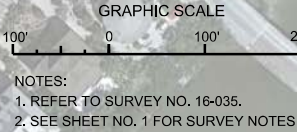
Checked by: GHR
Designed by: WRM
Drawn by: WRM
Plot Date: MAR 2016
Reference Files: H:\GIS\H4101_CHA.DGN

GULF INTRACOSTAL WATERWAY RIVER
CHARLOTTE COUNTY, FLORIDA
**PROJECT CONDITION SURVEY FY16
9-FOOT PROJECT**
PLAN
STA. 83+00 THRU STA. 116+00 CUT C7

Scale: AS SHOWN

Drawing no.

16



NOTES:
1. REFER TO SURVEY NO. 16-035.
2. SEE SHEET NO. 1 FOR SURVEY NOTES.

