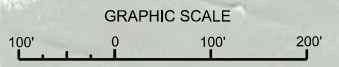


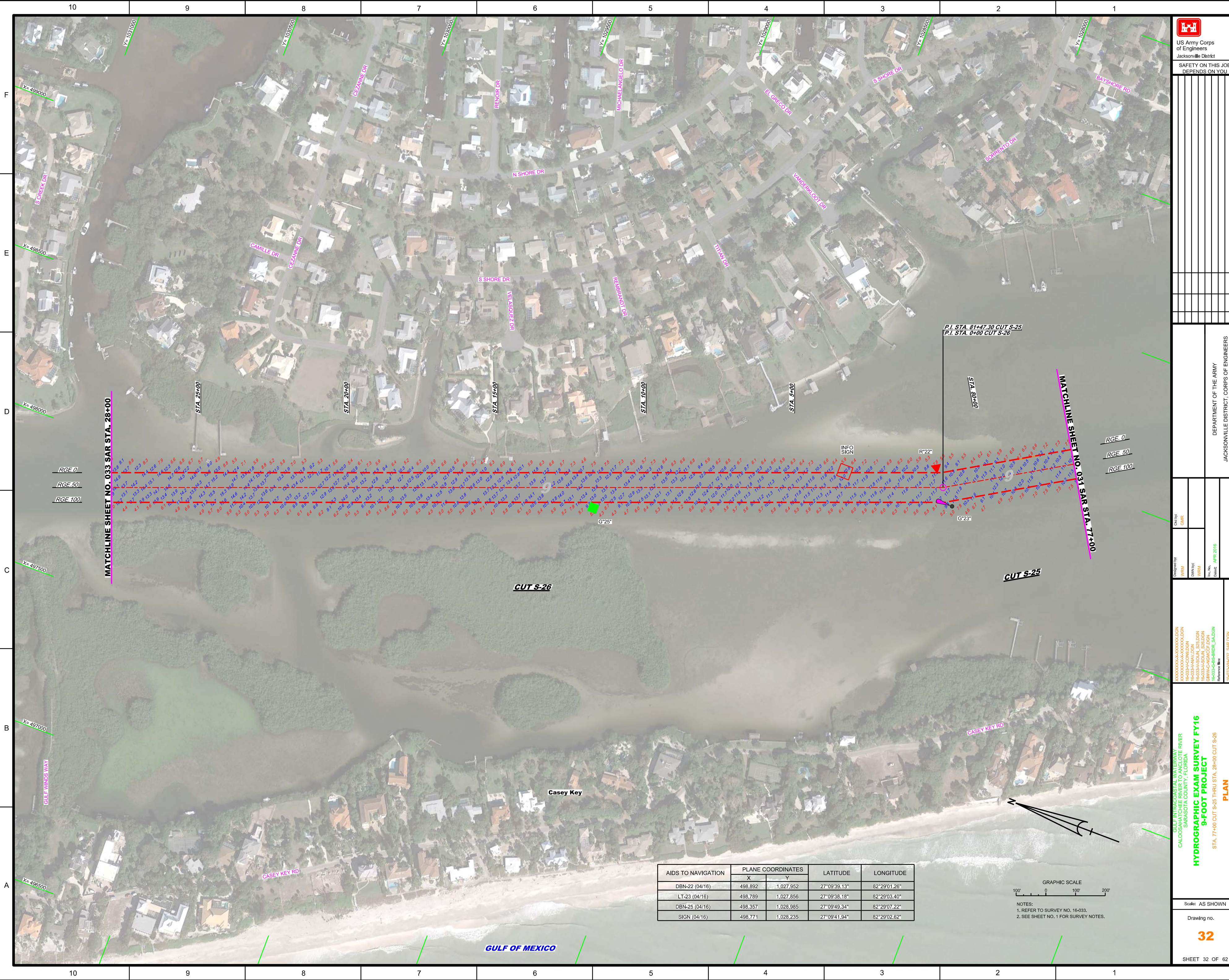
US Army Corps of Engineers
Jacksonville District

**SAFETY ON THIS JOB
DEPENDS ON YOU**

DEPARTMENT OF THE ARMY JACKSONVILLE DISTRICT, CORPS OF ENGINEERS JACKSONVILLE, FLORIDA	Drawn by: WRM Designated by: WRM Date: APR 2018
GULF INTRACOASTAL WATERWAY TO THE RIVER SARASOTA COUNTY, FLORIDA HYDROGRAPHIC EXAM SURVEY FY16 9-FOOT PROJECT STA. 44+00 THRU STA. 77+00 CUT S-25 PLAN	Scale: AS SHOWN Drawing no. 31 SHEET 31 OF 62



NOTES:
1. REFER TO SURVEY NO. 16-033.
2. SEE SHEET NO. 1 FOR SURVEY NOTES.



P.I. STA. 81+47.30 CUT S-25
P.I. STA. 0+00 CUT S-26

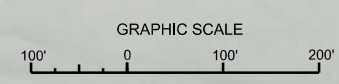
MATCHLINE SHEET NO. 033 SAR STA. 28+00

MATCHLINE SHEET NO. 031 SAR STA. 77+00

RGE 0
RGE 50
RGE 100

RGE 0
RGE 50
RGE 100

AIDS TO NAVIGATION	PLANE COORDINATES		LATITUDE	LONGITUDE
	X	Y		
DBN-22 (04/16)	498,892	1,027,952	27°09'39.13"	82°29'01.26"
LT-23 (04/16)	498,789	1,027,856	27°09'38.18"	82°29'03.40"
DBN-25 (04/16)	498,357	1,028,985	27°09'49.34"	82°29'07.22"
SIGN (04/16)	498,771	1,028,235	27°09'41.94"	82°29'02.62"



NOTES:
1. REFER TO SURVEY NO. 16-033.
2. SEE SHEET NO. 1 FOR SURVEY NOTES.

GULF OF MEXICO

Casey Key

CUT S-26

CUT S-25

G°25'

INFO SIGN

R°22'

G°25'

X= 498000

X= 498500

X= 499000

X= 499500

X= 500000

X= 500500

X= 501000

F

E

D

C

B

A

F

E

D

C

B

A

10

9

8

7

6

5

4

3

2

1

10

9

8

7

6

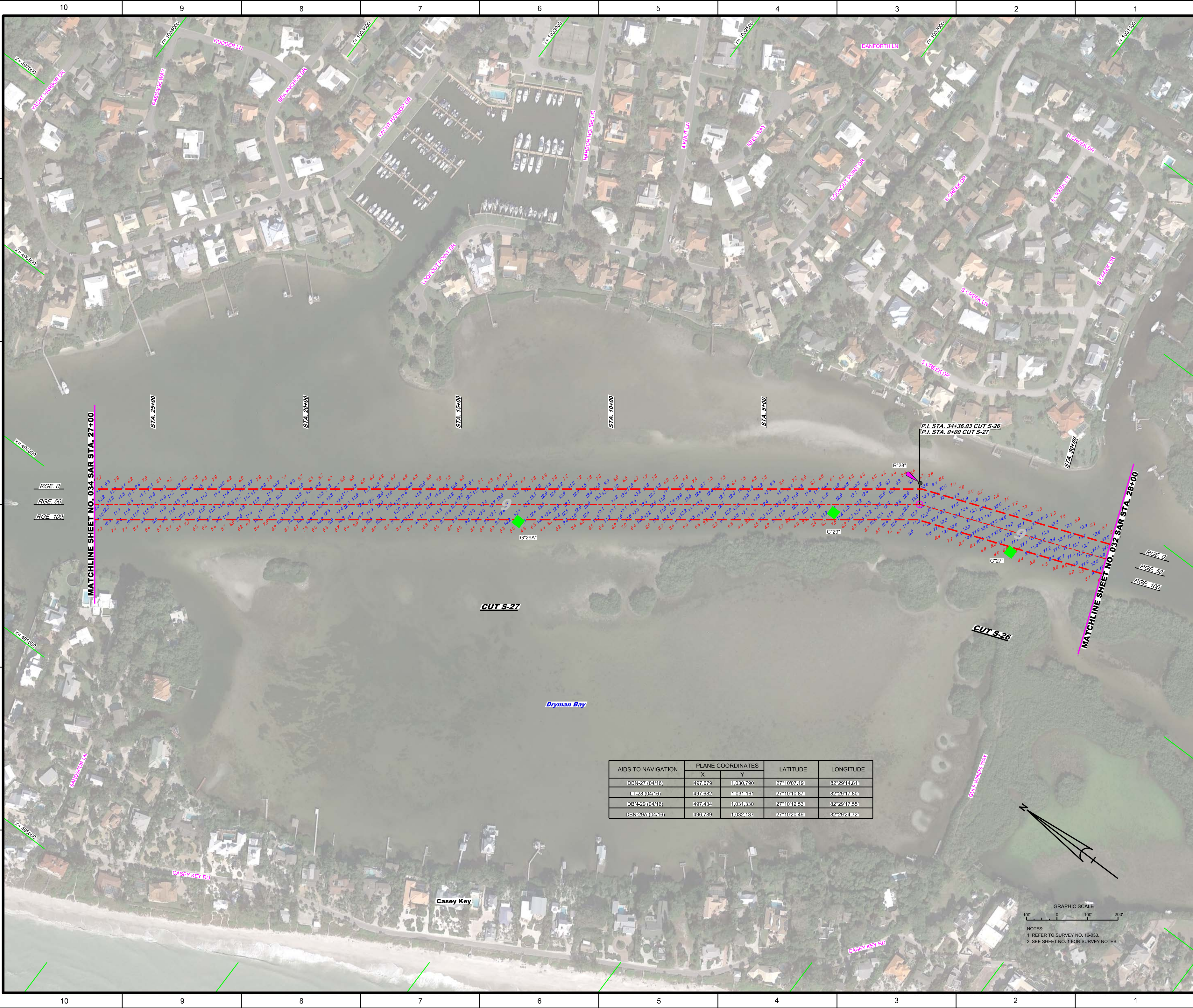
5

4

3

2

1



AIDS TO NAVIGATION	PLANE COORDINATES		LATITUDE	LONGITUDE
	X	Y		
DBN-27 (0416)	497,676	1030,790	27°10'07.19"	82°29'14.81"
LT-26 (0416)	497,682	1031,161	27°10'10.87"	82°29'17.80"
DBN-29 (0416)	497,434	1031,830	27°10'12.63"	82°29'17.55"
DBN-29A (0416)	496,789	1032,137	27°10'20.49"	82°29'24.72"

US Army Corps of Engineers
Jacksonville District

SAFETY ON THIS JOB
DEPENDS ON YOU

DEPARTMENT OF THE ARMY
JACKSONVILLE DISTRICT, CORPS OF ENGINEERS
JACKSONVILLE, FLORIDA

Call by: GHR
Designed by: WRM
Drawn by: WRM
File No.: APR 2016
Reference File: R-033-34-H333_SAR.DGN

GULF INTRACOASTAL WATERWAY TO THE RIVER
CALOOCHEE RIVER
SARASOTA COUNTY, FLORIDA

HYDROGRAPHIC EXAM SURVEY FY16
9-FOOT PROJECT

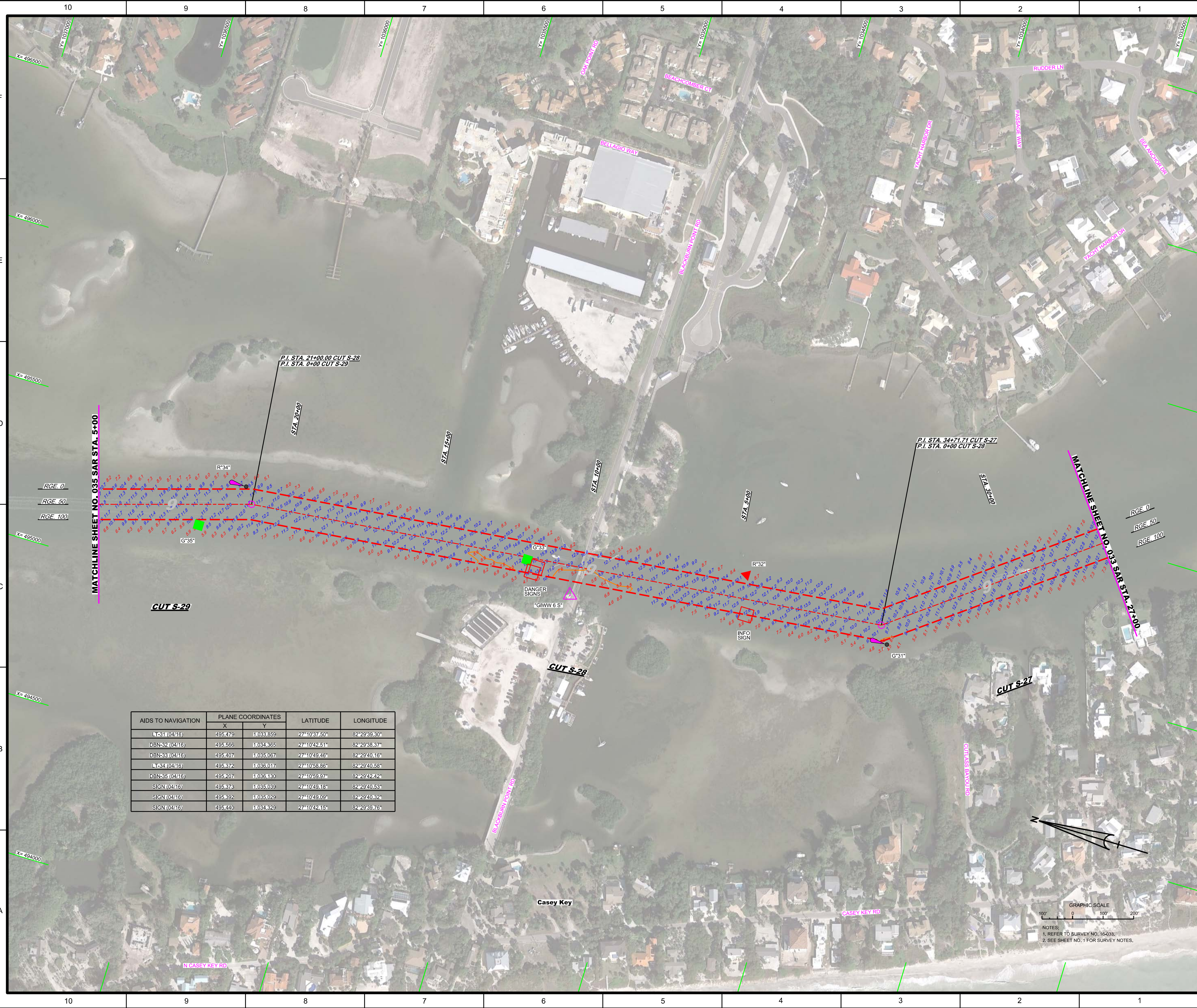
STA. 28+00 CUT S-26 THRU STA. 27+00 CUT S-27

PLAN

Scale: AS SHOWN

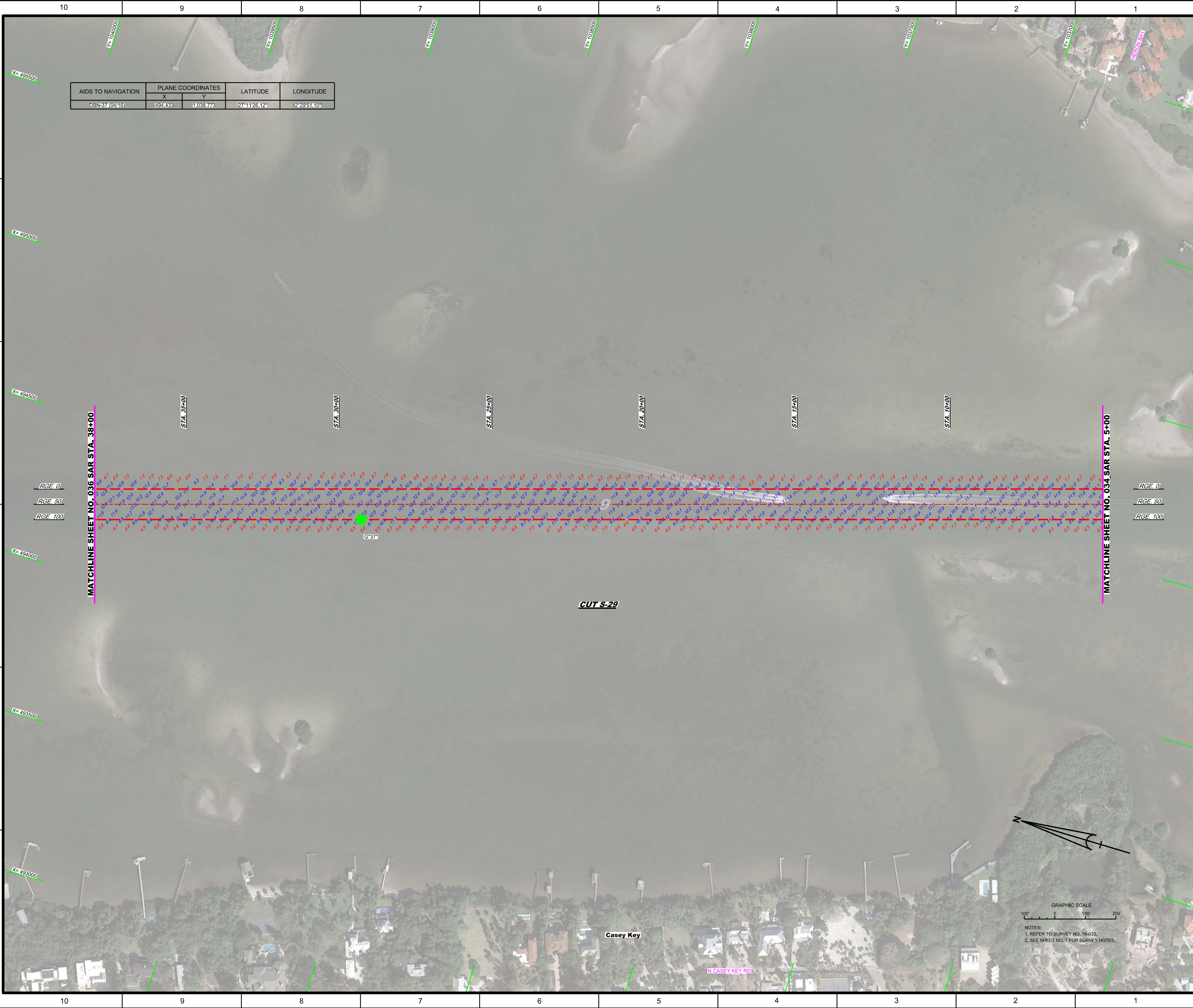
Drawing no. **33**

SHEET 33 OF 62




AIDS TO NAVIGATION	PLANE COORDINATES		LATITUDE	LONGITUDE
	X	Y		
LF31 (0416)	495479	11039359	27°10'37.50"	82°29'39.30"
DBN32 (0416)	495566	11034365	27°10'42.51"	82°29'38.37"
DBN33 (0416)	495407	11035067	27°10'49.46"	82°29'40.16"
LF34 (0416)	495372	11036017	27°10'58.86"	82°29'40.58"
DBN35 (0416)	495207	11036130	27°10'59.97"	82°29'42.42"
SIGN (0416)	495376	11035039	27°10'49.18"	82°29'40.53"
SIGN (0416)	495392	11035029	27°10'49.09"	82°29'40.32"
SIGN (0416)	495440	11034320	27°10'42.15"	82°29'39.76"

NOTES:
 1. REFER TO SURVEY NO. 16-033.
 2. SEE SHEET NO. 1 FOR SURVEY NOTES.



AIDS TO NAVIGATION	PLANE COORDINATES		LATITUDE	LONGITUDE
	X	Y		
DBN-37 (04/16)	494,433	1,038,773	27°11'26.12"	82°29'51.10"


 US Army Corps of Engineers
 Jacksonville District
 SAFETY ON THIS JOB DEPENDS ON YOU

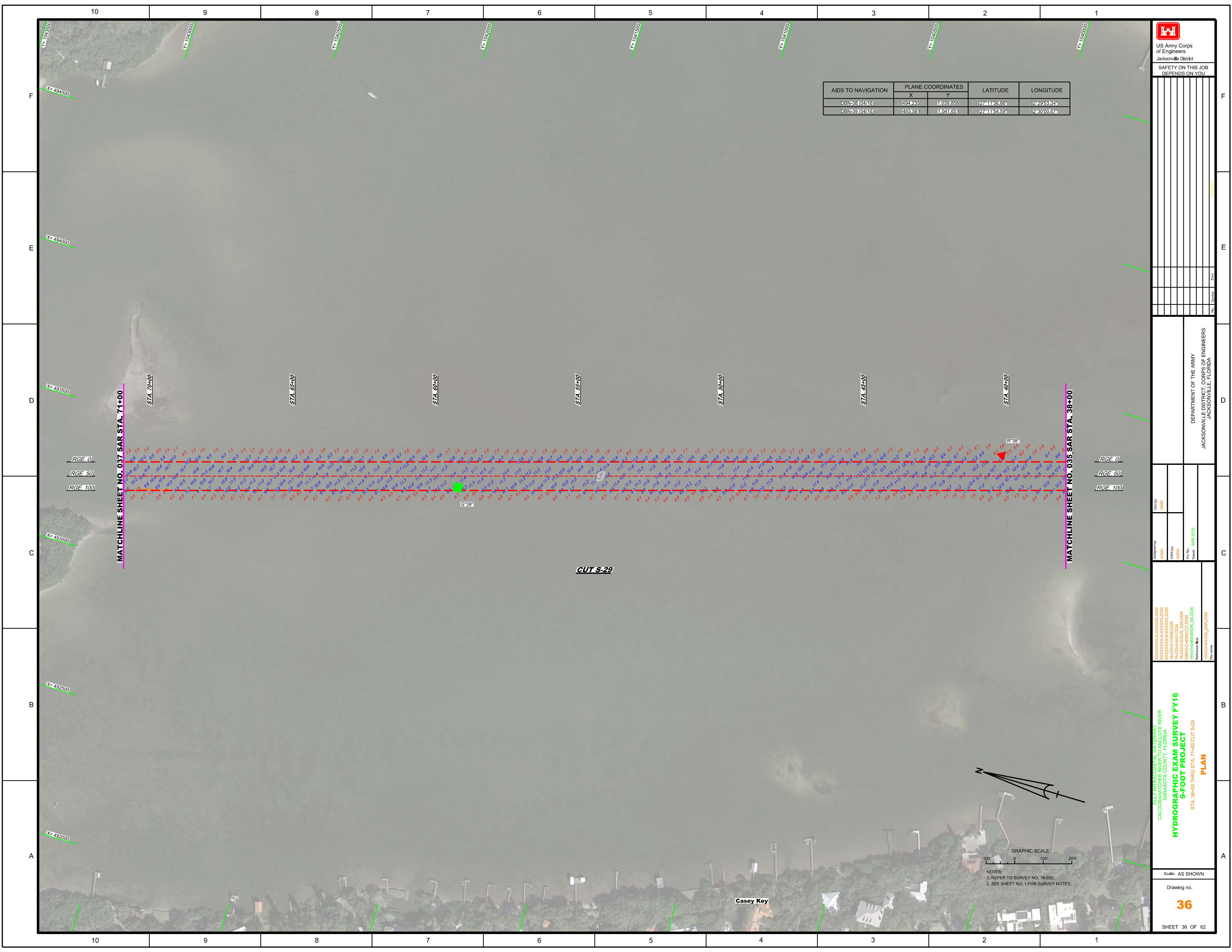
DEPARTMENT OF THE ARMY
 JACKSONVILLE DISTRICT, CORPS OF ENGINEERS
 JACKSONVILLE, FLORIDA

Drawn by: WRM
 Designated by: WRM
 Check by: GHR
 Date: APR 2016
 File name: I:\0335\PROJ\0335_SAR.DGN

GULF INTRACOSTAL WATERWAY
 SARASOTA COUNTY, FLORIDA
HYDROGRAPHIC EXAM SURVEY FY16
9-FOOT PROJECT
 STA. 5+00 THRU STA. 38+00 CUT S-29
PLAN

Scale: AS SHOWN
 Drawing no.
35
 SHEET 35 OF 62

GRAPHIC SCALE
 100' 0 100 200
 NOTES:
 1. REFER TO SURVEY NO. 16-033.
 2. SEE SHEET NO. 1 FOR SURVEY NOTES.



AIDS TO NAVIGATION	PLANE COORDINATES		LATITUDE	LONGITUDE
	X	Y		
OBN-38 (0416)	494,285	11039,858	27°11'36.85"	82°29'58.34"
OBN-39 (0416)	493,581	11041,651	27°11'55.59"	82°30'00.67"



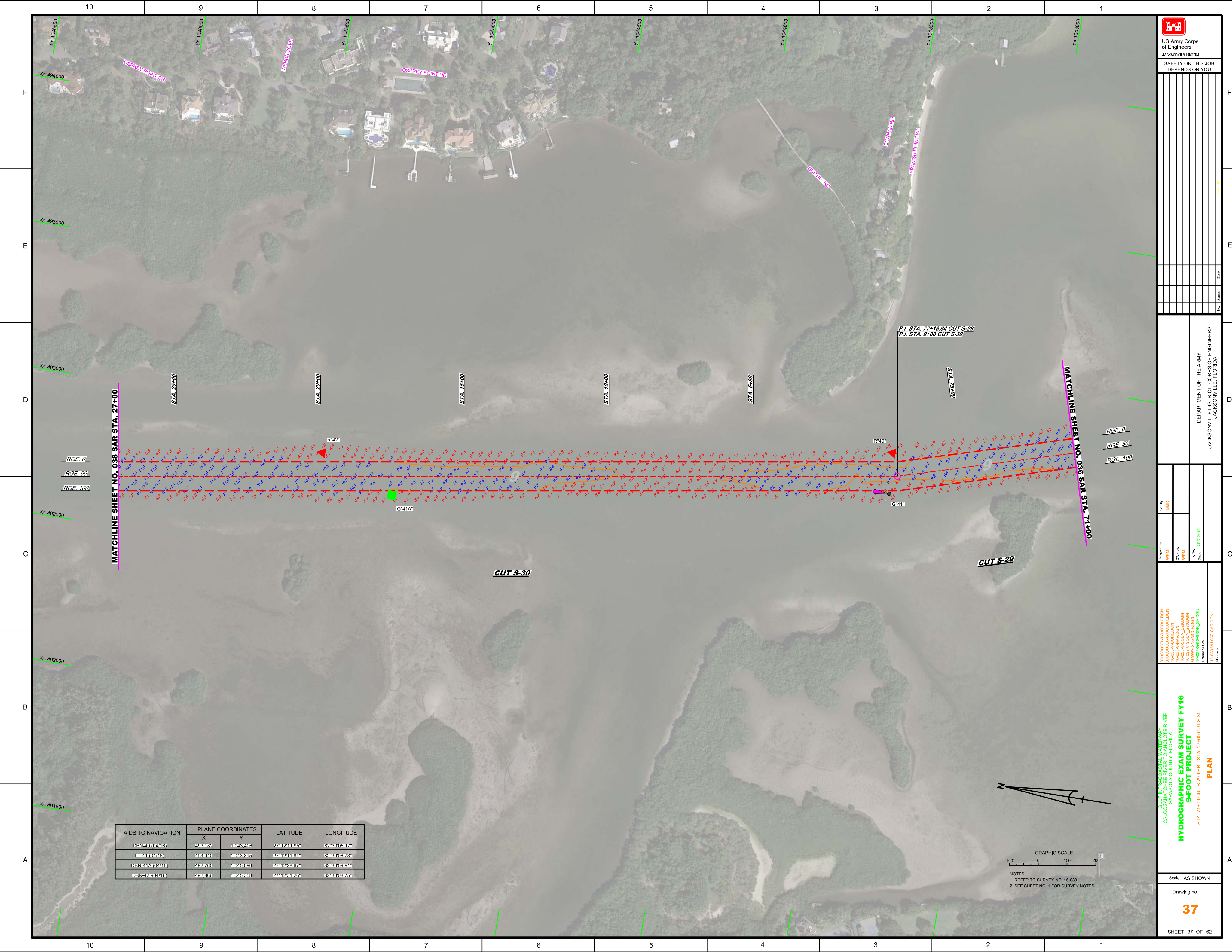
DEPARTMENT OF THE ARMY
JACKSONVILLE DISTRICT, CORPS OF ENGINEERS
JACKSONVILLE, FLORIDA

Created by: **GHR**
Designed by: **WRM**
Drawn by: **WRM**
Checked by: **WRM**
Date: **APR 2018**

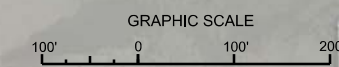
GULF INTERCOASTAL WATERWAY / CALOOG / SARASOTA COUNTY, FLORIDA
HYDROGRAPHIC EXAM SURVEY FY16 9-FOOT PROJECT
STA. 38+00 THRU STA. 71+00 CUT S-29
PLAN

Scale: AS SHOWN
Drawing no.
36
SHEET 36 OF 62

NOTES:
1. REFER TO SURVEY NO. 16-033.
2. SEE SHEET NO. 1 FOR SURVEY NOTES.



AIDS TO NAVIGATION	PLANE COORDINATES		LATITUDE	LONGITUDE
	X	Y		
DBN-40 (04/16)	493,182	11043,406	27°12'11.95"	82°30'05.17"
L-11 (04/16)	493,040	11043,895	27°12'11.84"	82°30'06.73"
DBN-41A (04/16)	492,760	11045,096	27°12'28.67"	82°30'08.91"
DBN-42 904/16)	492,866	11045,858	27°12'31.26"	82°30'08.75"



NOTES:
 1. REFER TO SURVEY NO. 16-033.
 2. SEE SHEET NO. 1 FOR SURVEY NOTES.

US Army Corps of Engineers
Jacksonville District

SAFETY ON THIS JOB DEPENDS ON YOU

DESIGNED BY: WRM
 CHECKED BY: WRM

DEPARTMENT OF THE ARMY
 JACKSONVILLE DISTRICT, CORPS OF ENGINEERS
 JACKSONVILLE, FLORIDA

PROJECT: GULF INTRACOASTAL WATERWAY
 CALCASCAN RIVER
 SARASOTA COUNTY, FLORIDA

**HYDROGRAPHIC EXAM SURVEY FY16
 9-FOOT PROJECT**

STA. 71+00 CUT S-29 THRU STA. 27+00 CUT S-30
PLAN

DATE: APR 2016

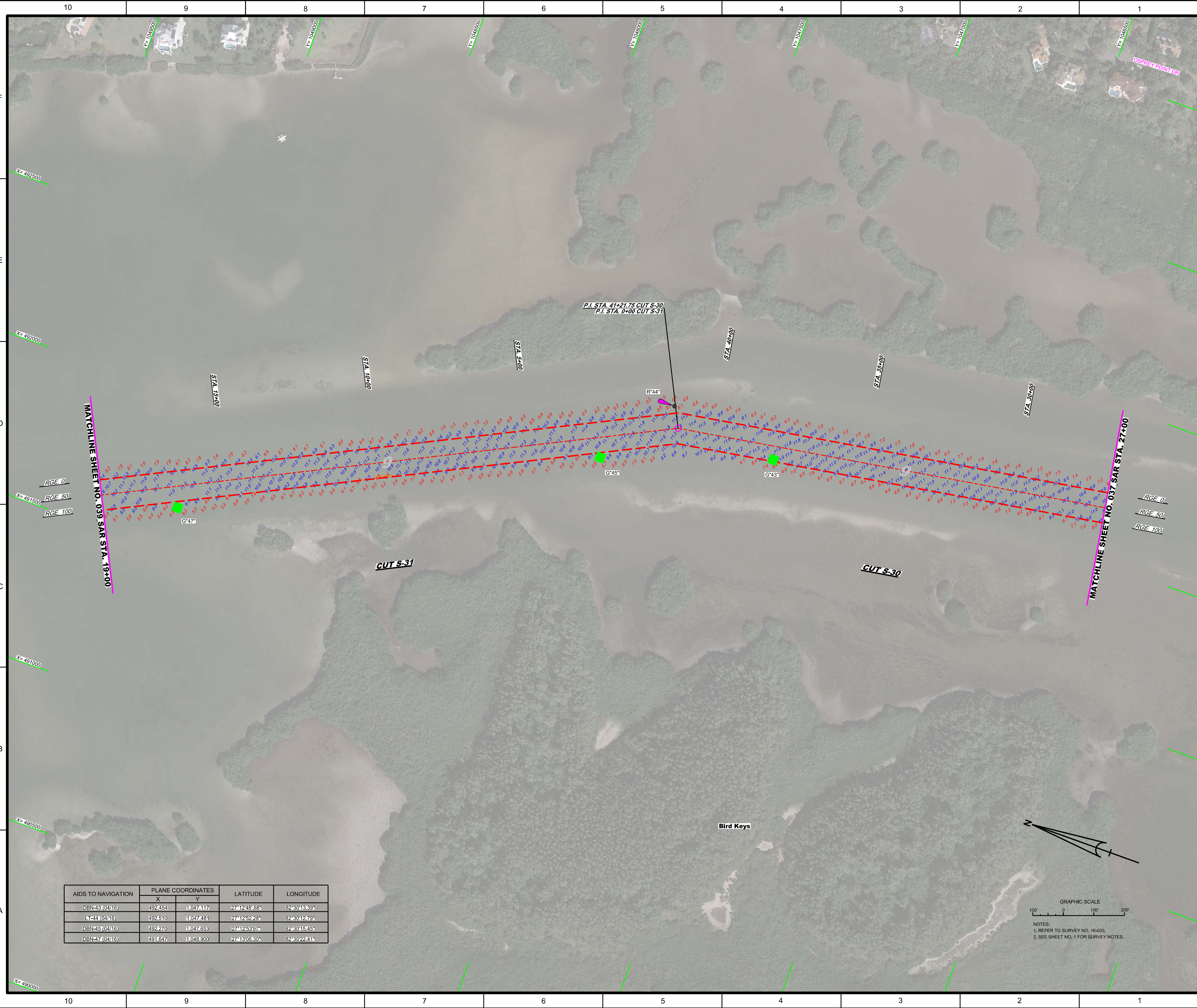
CAD: GHR

FILE NAME: H-033-16-H037_SAR.DGN

SCALE: AS SHOWN

DRAWING NO. **37**

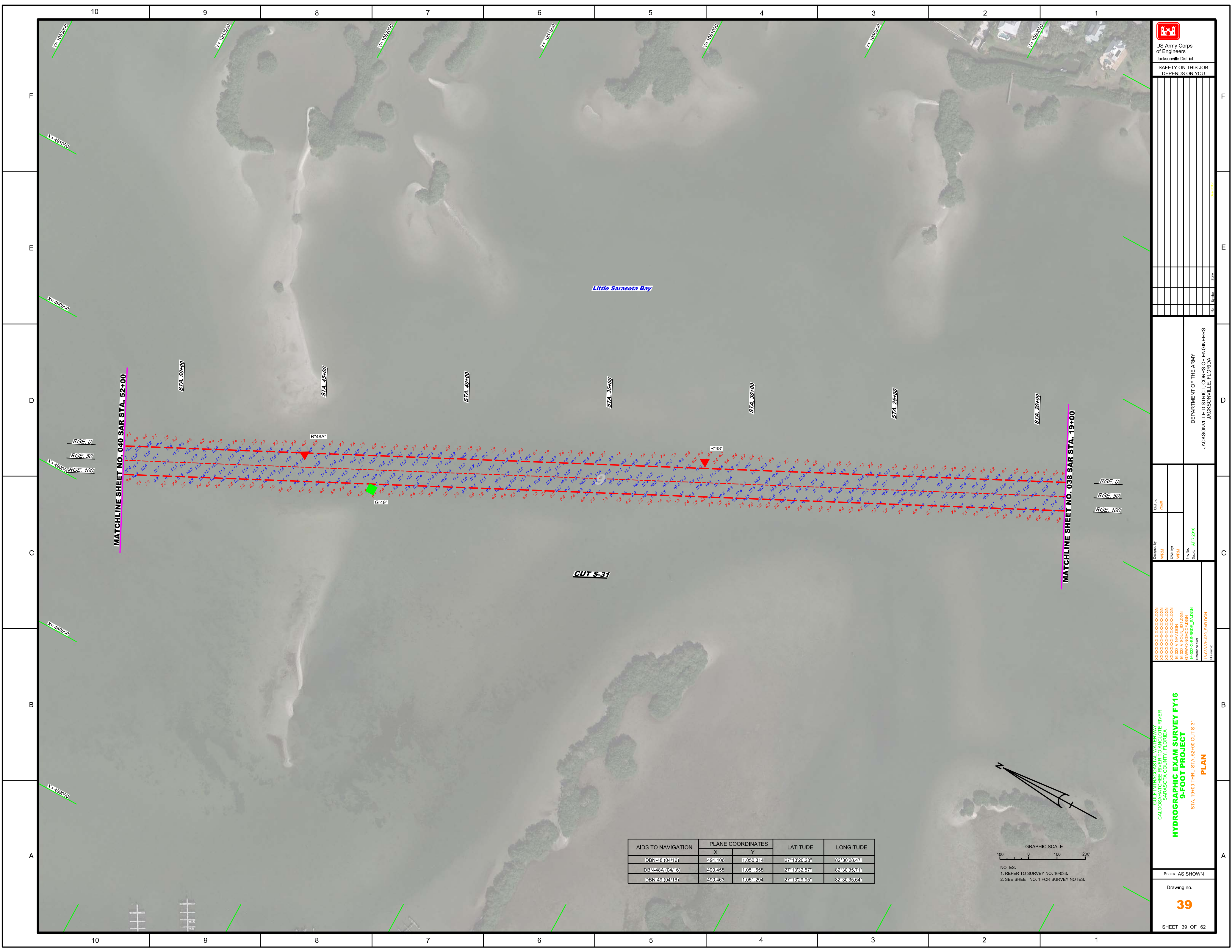
SHEET 37 OF 62



P.I. STA. 41+21.75 CUT S-30
P.I. STA. 0+00 CUT S-31

AIDS TO NAVIGATION	PLANE COORDINATES		LATITUDE	LONGITUDE
	X	Y		
DBN-43 (04/16)	492,454	1,047,117	27°12'48".68"	82°30'13.39"
LT-44 (04/16)	492,510	1,047,481	27°12'52.28"	82°30'12.79"
DBN-45 (04/16)	492,270	1,047,653	27°12'53.97"	82°30'15.45"
DBN-47 (04/16)	491,647	1,048,900	27°13'08.50"	82°30'22.41"

GRAPHIC SCALE
100' 0 100 200'
NOTES:
1. REFER TO SURVEY NO. 16-033.
2. SEE SHEET NO. 1 FOR SURVEY NOTES.




 US Army Corps of Engineers
 Jacksonville District
 SAFETY ON THIS JOB
 DEPENDS ON YOU

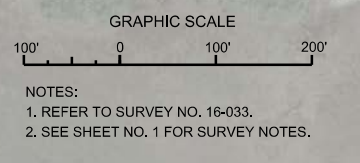
DEPARTMENT OF THE ARMY
 JACKSONVILLE DISTRICT, CORPS OF ENGINEERS
 JACKSONVILLE, FLORIDA

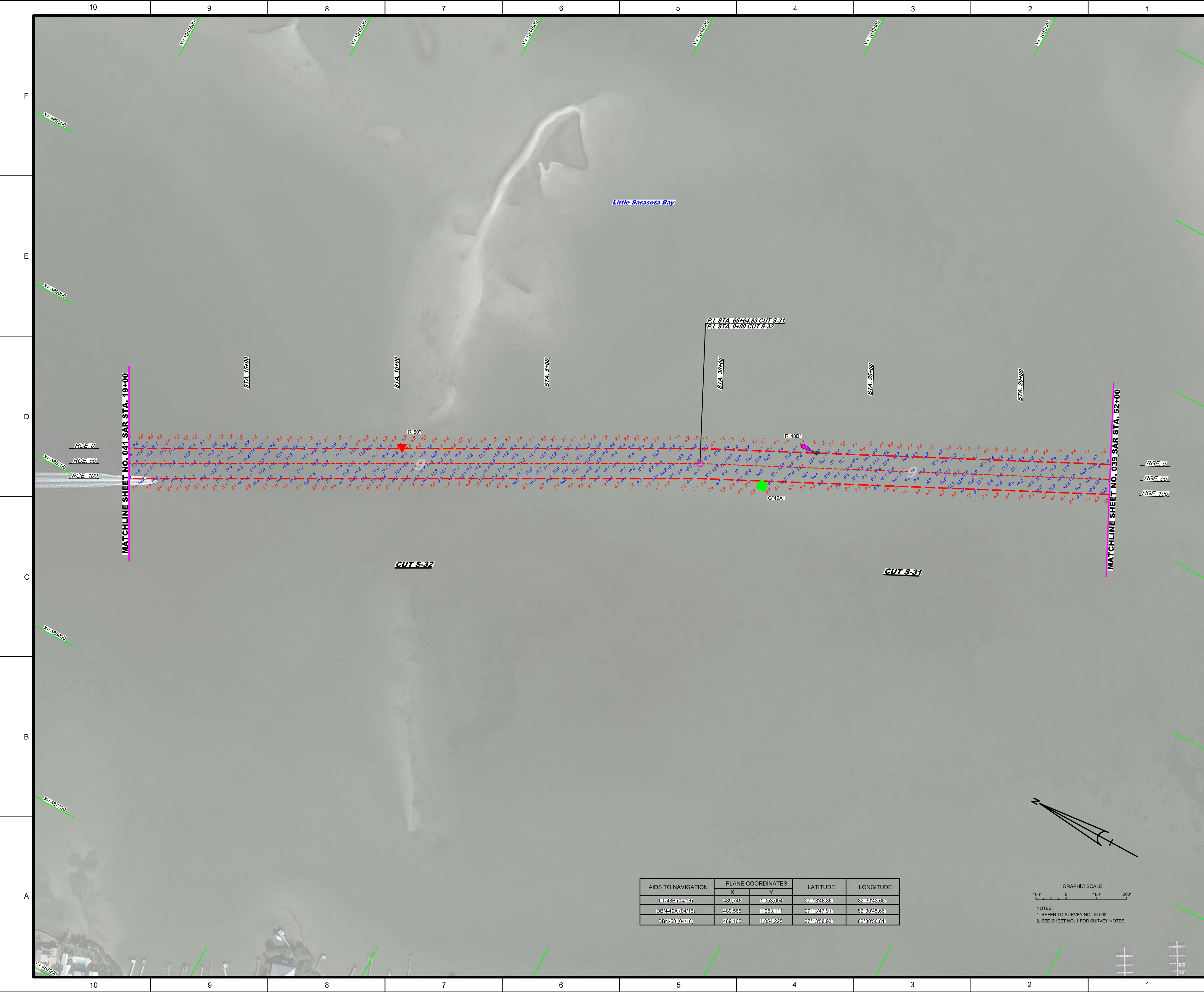
Designated by: WRM
 Drawn by: WRM
 Date: APR 2016
 File name: R-0335-HORSE_SAR.DGN

GULF INTRACOSTAL WATERWAY
 SARASOTA COUNTY, FLORIDA
HYDROGRAPHIC EXAM SURVEY FY16
9-FOOT PROJECT
 STA. 19+00 THRU STA. 92+00 CUT S-31
PLAN

Scale: AS SHOWN
 Drawing no.
39
 SHEET 39 OF 62

AIDS TO NAVIGATION	PLANE COORDINATES		LATITUDE	LONGITUDE
	X	Y		
DBN-48 (04/16)	491406	11050314	27°13'20.28"	82°30'28.47"
DBN-48A (04/16)	490458	11051558	27°13'42.57"	82°30'35.71"
DBN-49 (04/16)	490463	11051294	27°13'29.55"	82°30'35.64"





US Army Corps of Engineers
Jacksonville District
SAFETY ON THIS JOB DEPENDS ON YOU

No.	Symbol	Zone

DEPARTMENT OF THE ARMY
JACKSONVILLE DISTRICT, CORPS OF ENGINEERS
JACKSONVILLE, FLORIDA

Checked by:	GHK
Designed by:	WRM
DWG No.:	WRM
File No.:	WRM
Scale:	AS SHOWN
Discipline:	APR 2018

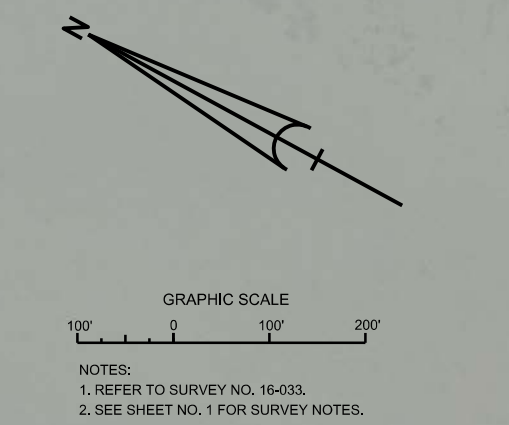
XXXXXXXXXXXXXXXXXXXXX.DGN
XXXXXXXXXXXXXXXXXXXXX.DGN
XXXXXXXXXXXXXXXXXXXXX.DGN
R-033A-SOIL_S31.DGN
R-033A-MAV.DGN
R-033A-GWCT.DGN
R-033A-BS-RROR_SADGN
R-033A-RROR_SADGN
R-033A-HAUL_SAR.DGN
R-033A-PLAN.DGN

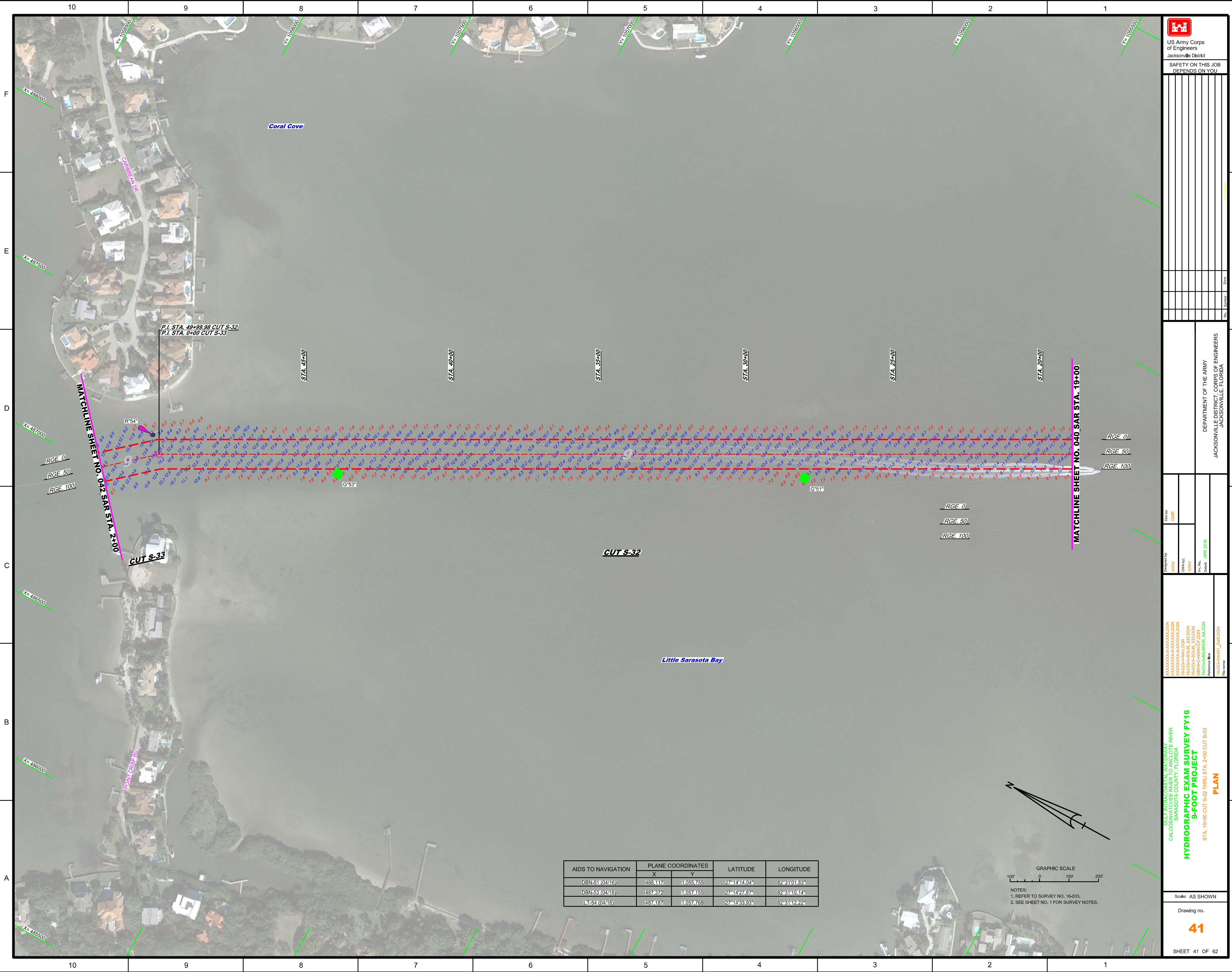
GULF INTRACOSTAL WATERWAY RIVER
CALOOCHEE RIVER
SARASOTA COUNTY, FLORIDA


HYDROGRAPHIC EXAM SURVEY FY16
9-FOOT PROJECT
PLAN
STA. 52+00 CUT S-31 THRU STA. 19+00 CUT S-32

Scale: AS SHOWN
Drawing no. **40**
SHEET 40 OF 62

AIDS TO NAVIGATION	PLANE COORDINATES		LATITUDE	LONGITUDE
	X	Y		
LT-48B (0416)	489746	11059104	27°19'26.86"	82°30'43.65"
DBN-49A (0416)	489565	11059111	27°19'47.91"	82°30'45.66"
DBN-50 (0416)	489105	11054225	27°19'58.93"	82°30'50.81"







 US Army Corps of Engineers
 Jacksonville District
 SAFETY ON THIS JOB
 DEPENDS ON YOU

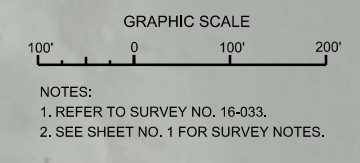
DEPARTMENT OF THE ARMY
 JACKSONVILLE DISTRICT, CORPS OF ENGINEERS
 JACKSONVILLE, FLORIDA

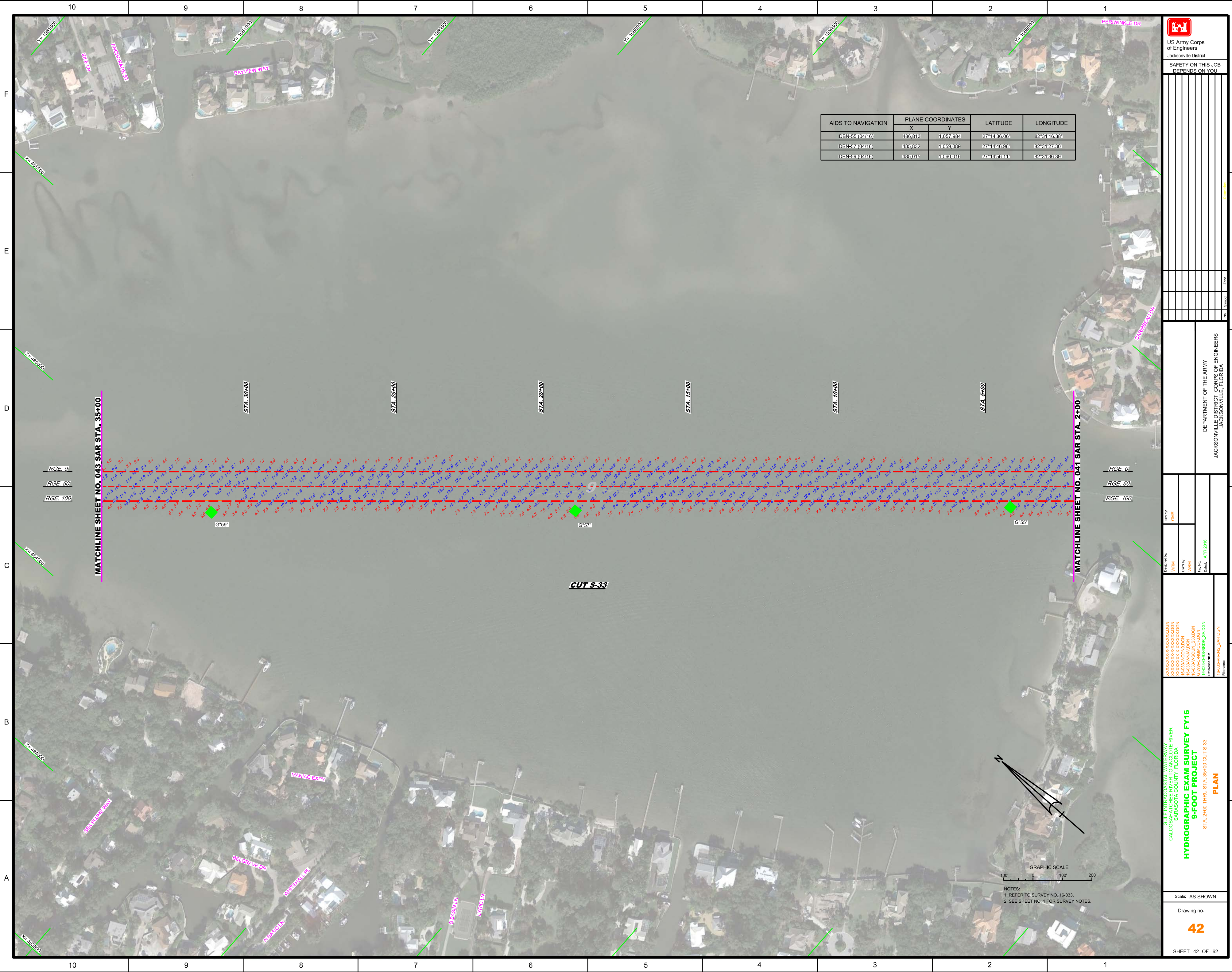
Call by: GHR
 Designed by: WRM
 Drawn by: WRM
 File No.: APR 2018
 Reference files:
 R:\033\H\H_L_SAR.DGN
 R:\033\G\G-SR\SR_SADN
 R:\033\A\A\A\A_S32.DGN
 R:\033\A\A\A\A_S33.DGN
 R:\033\A\A\A\A_S34.DGN
 R:\033\G\G\G\G_SADN

GULF INTRACOSTAL WATERWAY RIVER
 CALOOCHEE RIVER
 SARASOTA COUNTY, FLORIDA
HYDROGRAPHIC EXAM SURVEY FY16
9-FOOT PROJECT
 STA. 19+00 CUT S-32 THRU STA. 2+00 CUT S-33
PLAN

Scale: AS SHOWN
 Drawing no.
41
 SHEET 41 OF 62

AIDS TO NAVIGATION	PLANE COORDINATES		LATITUDE	LONGITUDE
	X	Y		
DBN-51 (04/16)	488417	11055765	27°14'14.04"	82°31'01.63"
DBN-53 (04/16)	487372	11057185	27°14'27.87"	82°31'10.74"
LT-54 (04/16)	487187	11057768	27°14'33.93"	82°31'12.22"





AIDS TO NAVIGATION	PLANE COORDINATES		LATITUDE	LONGITUDE
	X	Y		
DBN-55 (04/16)	486.813	1.057.984	27°14'36.06"	82°31'16.38"
DBN-57 (04/16)	485.832	1.059.089	27°14'46.95"	82°31'27.30"
DBN-59 (04/16)	485.015	1.060.016	27°14'56.11"	82°31'36.39"

MATCHLINE SHEET NO. 043 SAR STA. 35+00

MATCHLINE SHEET NO. 041 SAR STA. 2+00

CUT S-33

US Army Corps of Engineers
 Jacksonville District
SAFETY ON THIS JOB DEPENDS ON YOU

Department of the Army
 Jacksonville District, Corps of Engineers
 Jacksonville, Florida

Client: GHR
 Designer: WRM
 Drawn by: WRM
 Title: HYDROGRAPHIC EXAM SURVEY FY16
 Date: APR 2016

HYDROGRAPHIC EXAM SURVEY FY16
9-FOOT PROJECT
 STA. 2+00 THRU STA. 35+00 CUT S-33
PLAN

Scale: AS SHOWN
 Drawing no. **42**
 SHEET 42 OF 62





US Army Corps
of Engineers
Jacksonville District

SAFETY ON THIS JOB
DEPENDS ON YOU

AIDS TO NAVIGATION	PLANE COORDINATES		LATITUDE	LONGITUDE
	X	Y		
LT-60 (04/16)	484.764	1,060.530	27°15'01.18"	82°31'38.19"
LT-61 (04/16)	483.978	1,061.113	27°15'05.93"	82°31'47.82"
DBN-62 (04/16)	483.846	1,061.537	27°15'11.42"	82°31'49.41"
SIGN (04/16)	482.299	1,061.069	27°15'05.50"	82°31'44.87"
SIGN (04/16)	483.171	1,062.390	27°15'19.54"	82°31'56.94"

DEPARTMENT OF THE ARMY
JACKSONVILLE DISTRICT, CORPS OF ENGINEERS
JACKSONVILLE, FLORIDA

16-033-AV.DGN
16-033-CON.DGN
16-033-DEM.DGN
16-033-ENV.DGN
16-033-GEN.DGN
16-033-PLAN.DGN
16-033-PROF.DGN
16-033-SEC.DGN
16-033-SPR.DGN
16-033-SUR.DGN
16-033-TITLE.DGN

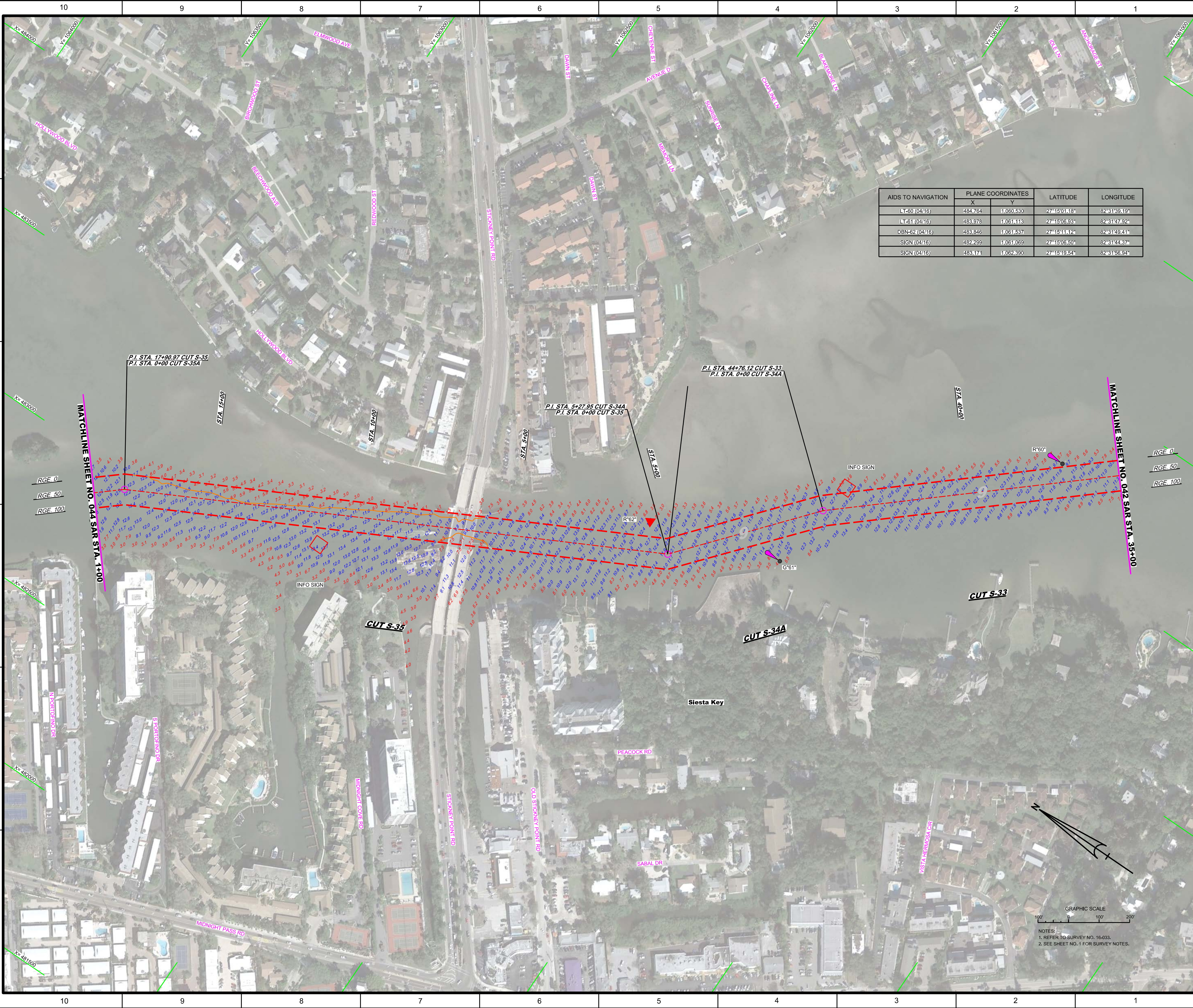
GULF INTRACONASTAL WATERWAY
CALOOCHEE RIVER
SARASOTA COUNTY, FLORIDA
**HYDROGRAPHIC EXAM SURVEY FY16
9-FOOT PROJECT**
PLAN
STA. 35+00 CUT S-33 THRU STA. 1+00 CUT S-35A

Scale: AS SHOWN

Drawing no.

43

SHEET 43 OF 62



GRAPHIC SCALE
100 0 100 200

NOTES:
1. REFER TO SURVEY NO. 16-033.
2. SEE SHEET NO. 1 FOR SURVEY NOTES.

AIDS TO NAVIGATION	PLANE COORDINATES		LATITUDE	LONGITUDE
	X	Y		
DBN-63 (04/16)	482.608	1.063.252	27°15'28.05"	82°32'03.20"
LT-64 (04/16)	482.543	1.063.596	27°15'31.45"	82°32'03.95"
DBN-64A (04/16)	482.304	1.063.877	27°15'34.22"	82°32'06.60"
DBN-65 (04/16)	482.264	1.063.747	27°15'32.64"	82°32'07.34"
DBN-66 (04/16)	481.418	1.064.886	27°15'44.17"	82°32'16.47"
LT-67 (04/16)	481.322	1.064.810	27°15'43.42"	82°32'17.53"
DBN-67A (04/16)	481.095	1.065.250	27°15'47.77"	82°32'20.07"
DBN-68 (04/16)	481.063	1.065.527	27°15'50.51"	82°32'20.43"



DEPARTMENT OF THE ARMY
 JACKSONVILLE DISTRICT, CORPS OF ENGINEERS
 JACKSONVILLE, FLORIDA

Drawn by: GHR
 Checked by: GHR
 Date: APR 2016

HYDROGRAPHIC EXAM SURVEY FY16
9-FOOT PROJECT
 STA. 1+00 CUT S-35A THRU STA. 9+00 CUT S-36
PLAN

Scale: AS SHOWN
 Drawing no. **44**
 SHEET 44 OF 62

GRAPHIC SCALE
 100' 0 100 200

NOTES:
 1. REFER TO SURVEY NO. 16-033.
 2. SEE SHEET NO. 1 FOR SURVEY NOTES.

AIDS TO NAVIGATION	PLANE COORDINATES		LATITUDE	LONGITUDE
	X	Y		
LT-59 (04/16)	480,539	1,066,388	27°15'59.01"	82°32'26.28"
DBN-70 (04/16)	480,673	1,066,420	27°15'59.34"	82°32'24.80"
DBN-72 (04/16)	479,992	1,068,201	27°16'18.95"	82°32'32.43"
DBN-72A (04/16)	479,838	1,068,727	27°16'22.14"	82°32'34.16"

 US Army Corps of Engineers
Jacksonville District
SAFETY ON THIS JOB
DEPENDS ON YOU

No.	Symbol	Zones

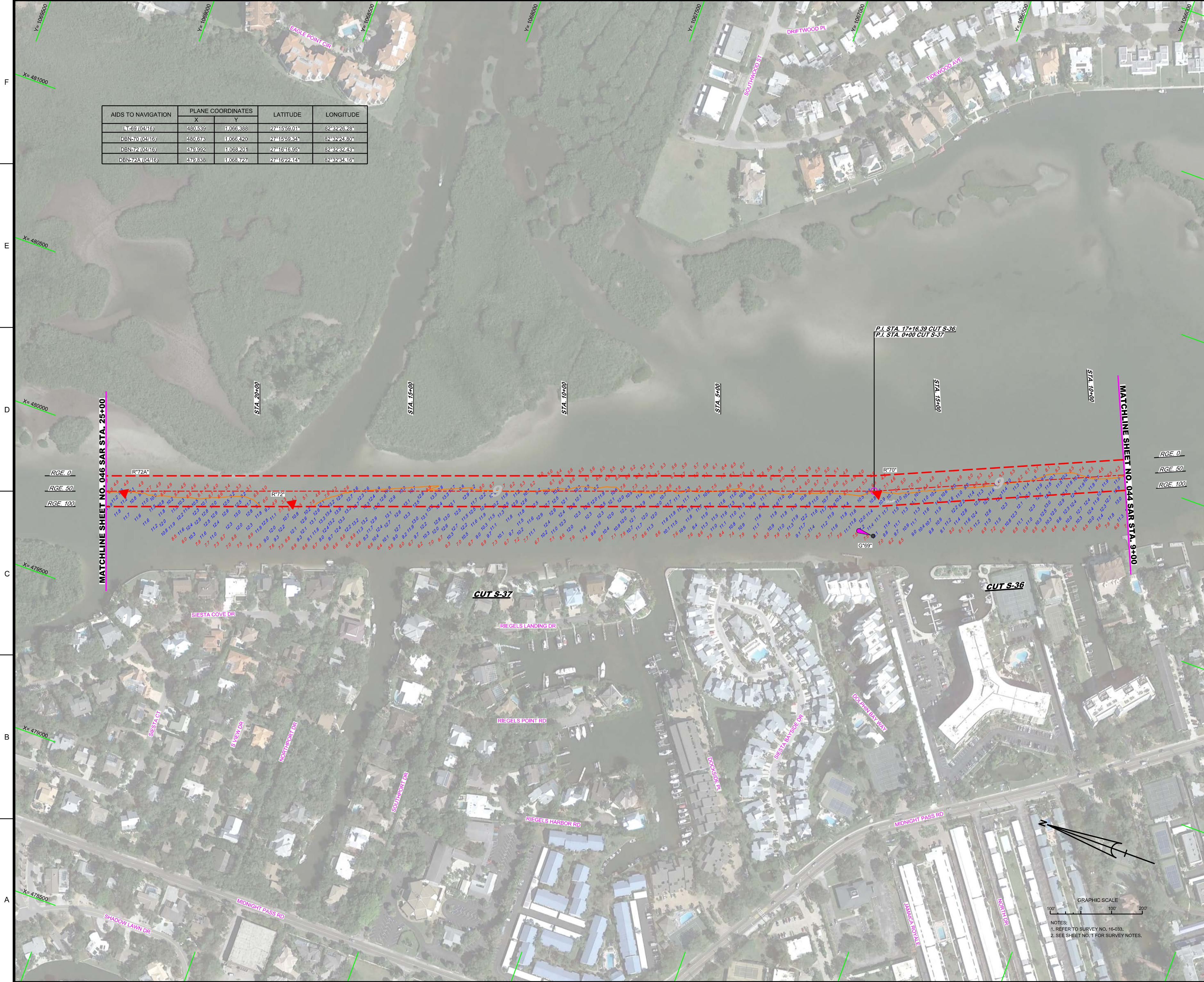
DEPARTMENT OF THE ARMY
JACKSONVILLE DISTRICT, CORPS OF ENGINEERS
JACKSONVILLE, FLORIDA

Drawn by: GHR
Checked by: GHR
Date: APR 2018

XXXXXXXXXXXXXXXXXXXXDGN
XXXXXXXXXXXXXXXXXXXXDGN
R1033-AVAVDDN
R1033-AVAVDDN
R1033-AVAVDDN
R1033-AVAVDDN
R1033-AVAVDDN
R1033-AVAVDDN

GULF INTRACOSTAL WATERWAY THROUGH THE RIVER
SARASOTA COUNTY, FLORIDA
**HYDROGRAPHIC EXAM SURVEY FY16
9-FOOT PROJECT**
PLAN
STA. 9+00 CUT S-36 THRU STA. 25+00 CUT S-37

Scale: AS SHOWN
Drawing No. **45**
SHEET 45 OF 62



GRAPHIC SCALE
100' 0 100' 200'
NOTES:
1. REFER TO SURVEY NO. 16-033.
2. SEE SHEET NO. 1 FOR SURVEY NOTES.