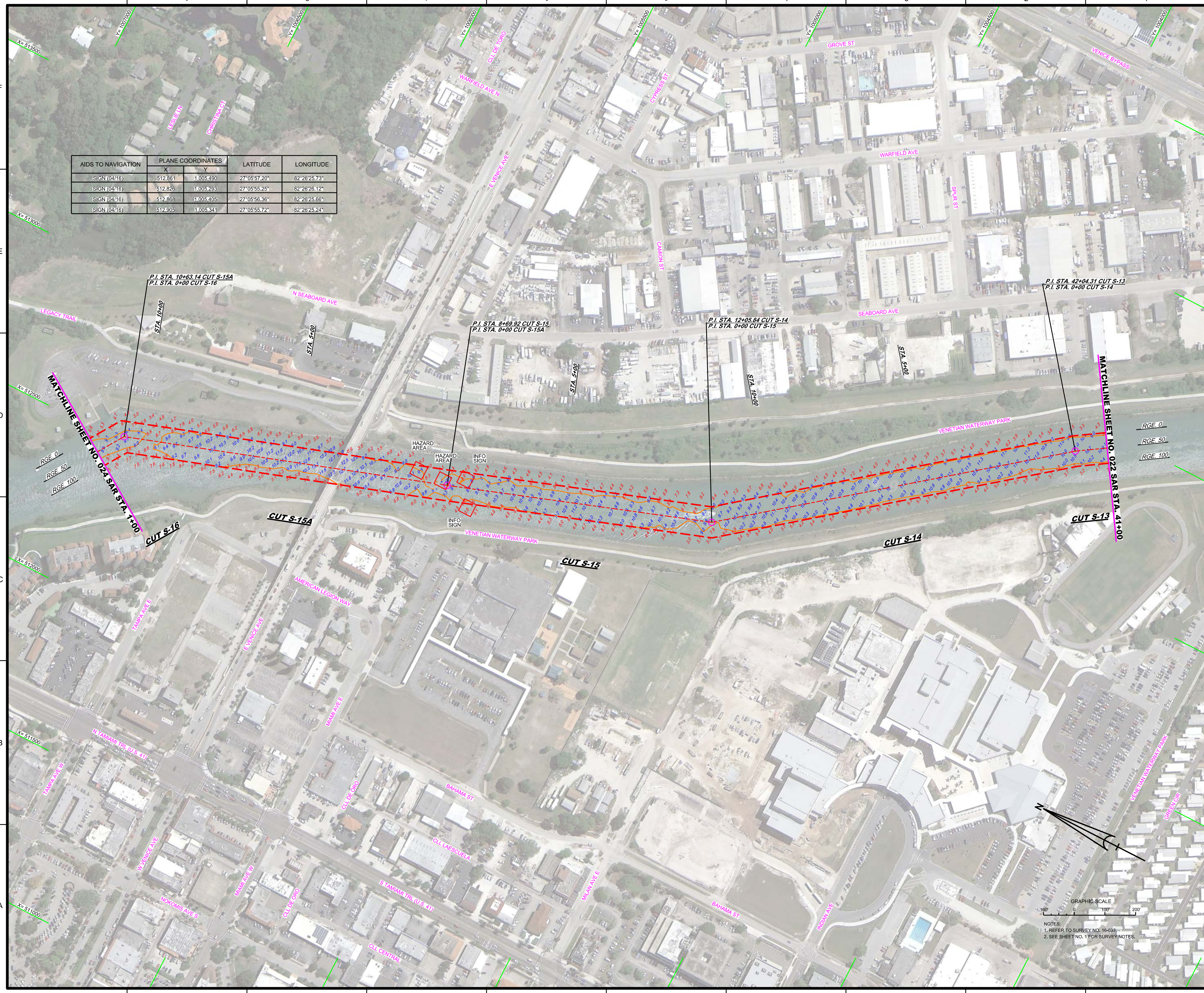



AIDS TO NAVIGATION	PLANE COORDINATES		LATITUDE	LONGITUDE
	X	Y		
SIGN (04/16)	512.861	1,005.490	27°05'57.20"	82°26'25.73"
SIGN (04/16)	512.826	1,005.293	27°05'55.25"	82°26'26.12"
SIGN (04/16)	512.868	1,005.405	27°05'56.36"	82°26'25.66"
SIGN (04/16)	512.905	1,005.341	27°05'55.72"	82°26'25.24"





US Army Corps of Engineers
Jacksonville District
SAFETY ON THIS JOB
DEPENDS ON YOU

DEPARTMENT OF THE ARMY
JACKSONVILLE DISTRICT, CORPS OF ENGINEERS
JACKSONVILLE, FLORIDA

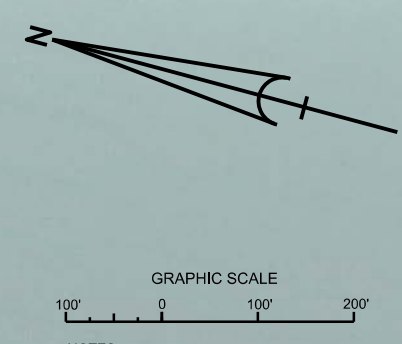
Client: GHR
Designed by: 16033A-AWJ.DGN
Drawn by: 16033A-SOJL.S13.DGN
16033A-SOJL.S16.DGN
16033A-SOJL.S18.DGN
16033A-SOJL.S19.DGN
16033A-SOJL.S20.DGN
16033A-SOJL.S21.DGN
16033A-SOJL.S22.DGN
16033A-SOJL.S23.DGN
16033A-SOJL.S24.DGN
16033A-SOJL.S25.DGN
16033A-SOJL.S26.DGN
16033A-SOJL.S27.DGN
16033A-SOJL.S28.DGN
16033A-SOJL.S29.DGN
16033A-SOJL.S30.DGN
16033A-SOJL.S31.DGN
16033A-SOJL.S32.DGN
16033A-SOJL.S33.DGN
16033A-SOJL.S34.DGN
16033A-SOJL.S35.DGN
16033A-SOJL.S36.DGN
16033A-SOJL.S37.DGN
16033A-SOJL.S38.DGN
16033A-SOJL.S39.DGN
16033A-SOJL.S40.DGN
16033A-SOJL.S41.DGN
16033A-SOJL.S42.DGN
16033A-SOJL.S43.DGN
16033A-SOJL.S44.DGN
16033A-SOJL.S45.DGN
16033A-SOJL.S46.DGN
16033A-SOJL.S47.DGN
16033A-SOJL.S48.DGN
16033A-SOJL.S49.DGN
16033A-SOJL.S50.DGN
16033A-SOJL.S51.DGN
16033A-SOJL.S52.DGN
16033A-SOJL.S53.DGN
16033A-SOJL.S54.DGN
16033A-SOJL.S55.DGN
16033A-SOJL.S56.DGN
16033A-SOJL.S57.DGN
16033A-SOJL.S58.DGN
16033A-SOJL.S59.DGN
16033A-SOJL.S60.DGN
16033A-SOJL.S61.DGN
16033A-SOJL.S62.DGN
16033A-SOJL.S63.DGN
16033A-SOJL.S64.DGN
16033A-SOJL.S65.DGN
16033A-SOJL.S66.DGN
16033A-SOJL.S67.DGN
16033A-SOJL.S68.DGN
16033A-SOJL.S69.DGN
16033A-SOJL.S70.DGN
16033A-SOJL.S71.DGN
16033A-SOJL.S72.DGN
16033A-SOJL.S73.DGN
16033A-SOJL.S74.DGN
16033A-SOJL.S75.DGN
16033A-SOJL.S76.DGN
16033A-SOJL.S77.DGN
16033A-SOJL.S78.DGN
16033A-SOJL.S79.DGN
16033A-SOJL.S80.DGN
16033A-SOJL.S81.DGN
16033A-SOJL.S82.DGN
16033A-SOJL.S83.DGN
16033A-SOJL.S84.DGN
16033A-SOJL.S85.DGN
16033A-SOJL.S86.DGN
16033A-SOJL.S87.DGN
16033A-SOJL.S88.DGN
16033A-SOJL.S89.DGN
16033A-SOJL.S90.DGN
16033A-SOJL.S91.DGN
16033A-SOJL.S92.DGN
16033A-SOJL.S93.DGN
16033A-SOJL.S94.DGN
16033A-SOJL.S95.DGN
16033A-SOJL.S96.DGN
16033A-SOJL.S97.DGN
16033A-SOJL.S98.DGN
16033A-SOJL.S99.DGN
16033A-SOJL.S100.DGN

HYDROGRAPHIC EXAM SURVEY FY16
9-FOOT PROJECT
PLAN
STA. 41+00 CUT S-13 THRU STA. 1+00 CUT S-16

Scale: AS SHOWN
Drawing no.
23
SHEET 23 OF 62



AIDS TO NAVIGATION	PLANE COORDINATES		LATITUDE	LONGITUDE
	X	Y		
DBN-7 (04/16)	504.306	1,012,221	27°07'03.55"	82°28'00.68"
DBN-8 (04/16)	504.029	1,013,106	27°07'12.31"	82°28'03.77"
LT-9 (04/16)	503.678	1,013,620	27°07'17.39"	82°28'07.68"
DBN-10 (04/16)	503.794	1,013,763	27°07'18.80"	82°28'06.40"
SIGN (04/16)	503.798	1,013,700	27°07'18.18"	82°28'06.36"



NOTES:
1. REFER TO SURVEY NO. 16-033.
2. SEE SHEET NO. 1 FOR SURVEY NOTES.

DEPARTMENT OF THE ARMY
JACKSONVILLE DISTRICT, CORPS OF ENGINEERS
JACKSONVILLE, FLORIDA

GULF INTRACOASTAL WATERWAY
CALOOCHEE RIVER
SARASOTA COUNTY, FLORIDA
**HYDROGRAPHIC EXAM SURVEY FY16
9-FOOT PROJECT**
PLAN
STA. 12+00 CUT S-21 THRU STA. 17+00 CUT S-22

Scale: AS SHOWN
Drawing no.
27
SHEET 27 OF 62

