

# GIWW - SARASOTA COUNTY, FLORIDA CUTS S-1 THRU S-48 PROJECT CONDITION SURVEY FY16 9-FOOT PROJECT

### SURVEY NOTES

- REFER TO SURVEY NO. 16-033.
- SOUNDINGS ARE IN FEET AND TENTHS AND REFER TO NOAA'S REPORTED MEAN LOWER LOW WATER (MLLW) OF THE 1983-2001 TIDAL EPOCH.
- TIDAL REDUCTIONS WERE OBTAINED UTILIZING A REAL-TIME KINEMATIC (RTK) GPS AND REFERENCED TO MLLW UTILIZING A HYPPACK KINEMATIC TIDE DATUM (KTD) MODEL. KTD FILE NAME IS: "SPC-FL-WEST-2010-12-07.KTD".
- ALL ELEVATIONS ARE BELOW THE CHART DATUM UNLESS PRECEDED BY A (+) SIGN.
- PLANE COORDINATES ARE BASED ON THE TRANSVERSE MERCATOR PROJECTION FOR THE WEST ZONE OF FLORIDA AND REFERENCED TO NORTH AMERICAN DATUM OF 1983 (NAD83).
- ALL STATIONING REFERS TO THE CENTERLINE OF THE CHANNEL.
- THIS SURVEY WAS PERFORMED USING REAL-TIME KINEMATIC (RTK) GPS POSITIONING WITH THE FOLLOWING REFERENCE BASE LOCATIONS:  
 REFERENCE BASE LOCATED AT "IWSA-96" (PID: BBDG39)  
 REFERENCE BASE LOCATED AT "GIWW 6 S" (PID: BFBF87)  
 REFERENCE BASE LOCATED AT "C LISTOWSKI" (PID: BBDX69)  
 REFERENCE BASE LOCATED AT "GIWW 4 S" (PID: BFBF73)
- DEPTHS DEPICTED BY THIS SURVEY ARE REFERENCED TO MLLW, TIDAL EPOCH 1983-2001 AS REPORTED BY THE NATIONAL OCEANIC AND ATMOSPHERIC ADMINISTRATION (NOAA). NOAA'S VDATUM MODEL WAS USED AND CALIBRATED TO THE PUBLISHED MLLW HEIGHTS OF THE BENCHMARKS ASSOCIATED WITH THE TIDE GAGE SITES SPECIFIED BELOW:  
 NOAA TIDAL STATION 872 6083 USED FOR CUTS S-48 THRU S-38 (PID: AG7713)  
 NOAA TIDAL STATION 872 5943 USED FOR CUTS S-37 THRU S-25 (PID: AG7167)  
 NOAA TIDAL STATION 872 5899 USED FOR CUTS S-24 THRU S-12 (PID: DL3719)  
 NOAA TIDAL STATION 872 5809 USED FOR CUTS S-11 THRU S-01 (PID: AG7850)
- VERTICAL MEASUREMENTS WERE MADE USING A ROSS SMART SOUNDER DUAL-FREQUENCY 28/200 KHZ SINGLE-BEAM TRANSDUCER AND AN EDGETECH 6205 COMBINED MULTI-BEAM AND SIDESCAN. ALL SOUNDINGS SHOWN ARE IN HIGH FREQUENCY.
- | VESSEL | DATE OF SURVEY | CUT            |
|--------|----------------|----------------|
| SB-48  | 19 APR 2016    | S-38 THRU S-48 |
| SB-48  | 20 APR 2016    | S-25 THRU S-37 |
| SB-48  | 21 APR 2016    | S-12 THRU S-24 |
| SB-48  | 22 APR 2016    | S-01 THRU S-11 |
- AIDS TO NAVIGATION WERE LOCATED DURING THIS SURVEY.
- THE INFORMATION DEPICTED ON THIS MAP REPRESENTS THE RESULTS OF SURVEYS MADE ON THE DATES INDICATED ABOVE AND CAN ONLY BE CONSIDERED AS INDICATING THE GENERAL CONDITIONS AT THAT TIME. THIS CHART IS SOLELY FOR THE DISTRIBUTION OF AVAILABLE DEPTHS AT THE TIME OF THE SURVEY.
- SURVEY ACCURACY PERFORMANCE STANDARDS, QUALITY CONTROL, AND QUALITY ASSURANCE REQUIREMENTS WERE FOLLOWED DURING THIS SURVEY IN ACCORDANCE WITH USAGE EM 1110-2-1003, HYDROGRAPHIC SURVEYING, 30 NOV 13.

LEGEND	
	MONUMENT
	LIGHTED BEACON
	GREEN DAYBEACON
	RED DAYBEACON
	RED LIGHTED BUOY
	GREEN LIGHTED BUOY
	CAN BUOY
	NUN BUOY
	TIDE STAFF
	PROJECT DEPTH

US Army Corps of Engineers  
Jacksonville District

SAFETY ON THIS JOB  
DEPENDS ON YOU

---

DEPARTMENT OF THE ARMY  
JACKSONVILLE DISTRICT, CORPS OF ENGINEERS  
JACKSONVILLE, FLORIDA

---

GULF INTRACOSTAL WATERWAY  
 CALOOCHEE RIVER  
 SARASOTA COUNTY, FLORIDA  
**HYDROGRAPHIC EXAM SURVEY FY16**  
**9-FOOT PROJECT**  
 INDEX, LOCATION AND VICINITY  
**MAP**

---

Scale: AS SHOWN

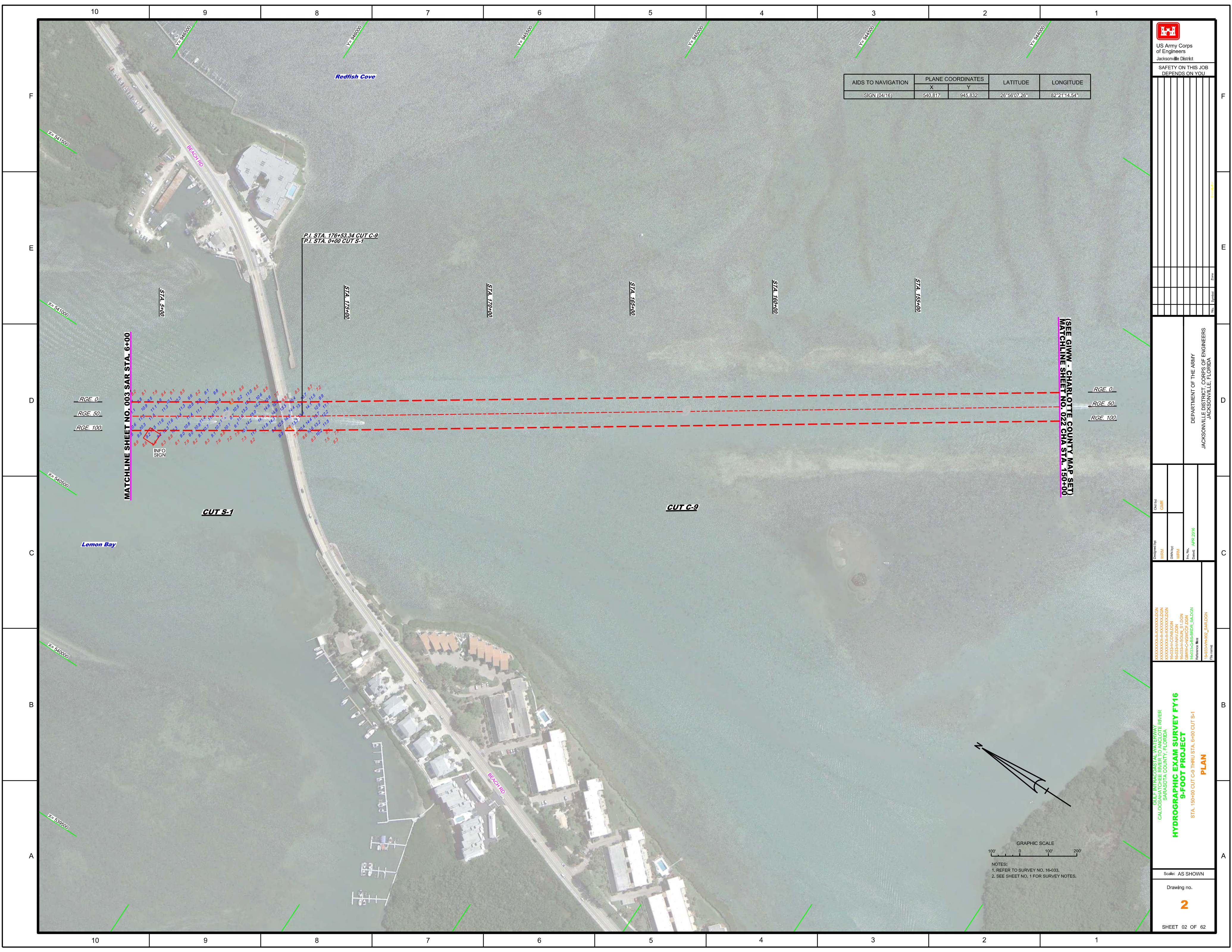
Drawing no.

**1**

---

SHEET 01 OF 62





**US Army Corps of Engineers**  
Jacksonville District

SAFETY ON THIS JOB  
DEPENDS ON YOU

AIDS TO NAVIGATION	PLANE COORDINATES		LATITUDE	LONGITUDE
	X	Y		
SIGN (04/16)	540.817	945.832	28°56'07.26"	82°21'14.54"

MATCHLINE SHEET NO. 003 SAR STA. 6+00

MATCHLINE SHEET NO. 022 CHA STA. 150+00

(SEE GIWW - CHARLOTTE COUNTY MAP SET)

RGE. 0  
RGE. 50  
RGE. 100

CUT S-1

CUT C-9

Lemon Bay

Redfish Cove

STA. 175+00  
STA. 176+00  
STA. 177+00  
STA. 178+00  
STA. 179+00  
STA. 180+00  
STA. 181+00  
STA. 182+00  
STA. 183+00  
STA. 184+00  
STA. 185+00

INFO SIGN

GRAPHIC SCALE  
100' 0 100' 200'

NOTES:  
1. REFER TO SURVEY NO. 16-033.  
2. SEE SHEET NO. 1 FOR SURVEY NOTES.

Scale: AS SHOWN

Drawing no.  
**2**

SHEET 02 OF 62

GULF INTRACOSTAL WATERWAY RIVER  
CALOOCHEE RIVER  
SARASOTA COUNTY, FLORIDA

**HYDROGRAPHIC EXAM SURVEY FY16**  
**9-FOOT PROJECT**

STA. 190+00 CUT C-9 THRU STA. 6+00 CUT S-1

**PLAN**

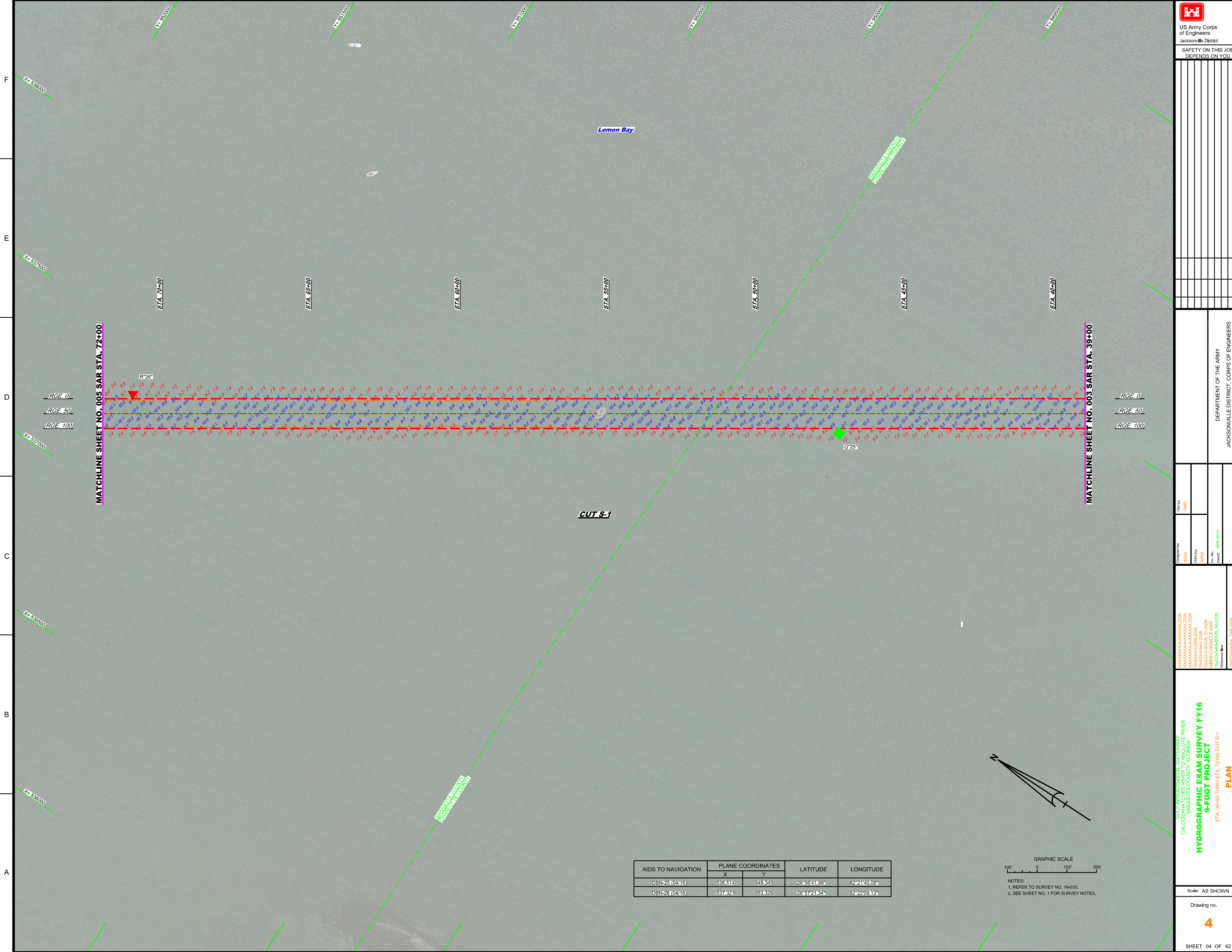
Designed by: WRM  
Checked by: GHR  
Date: APR 2016

DEPARTMENT OF THE ARMY  
JACKSONVILLE DISTRICT, CORPS OF ENGINEERS  
JACKSONVILLE, FLORIDA









 US Army Corps of Engineers Jacksonville District SAFETY ON THIS JOB DEPENDS ON YOU	
Checked by:	GRH
Designed by:	WRM
Drawn by:	WRM
File No.:	APR 2016
Revision No.:	1
Project Name:	GULF INTRACASTAL WATERWAY RIVER CALOOCAN RIVER SARASOTA COUNTY, FLORIDA <b>HYDROGRAPHIC EXAM SURVEY FY16</b> <b>9-FOOT PROJECT</b> STA. 39+00 THRU STA. 72+00 CUT S-1
Scale:	AS SHOWN
Drawing no.:	<b>4</b>
SHEET 04 OF 62	

AIDS TO NAVIGATION	PLANE COORDINATES		LATITUDE	LONGITUDE
	X	Y		
DBN-25 (0416)	538,514	949,345	26°59'41.99"	82°21'40.09"
DBN-26 (0416)	537,321	953,326	26°57'21.34"	82°22'09.18"

GRAPHIC SCALE  
100' 0 100' 200'

NOTES:  
1. REFER TO SURVEY NO. 16-033.  
2. SEE SHEET NO. 1 FOR SURVEY NOTES.





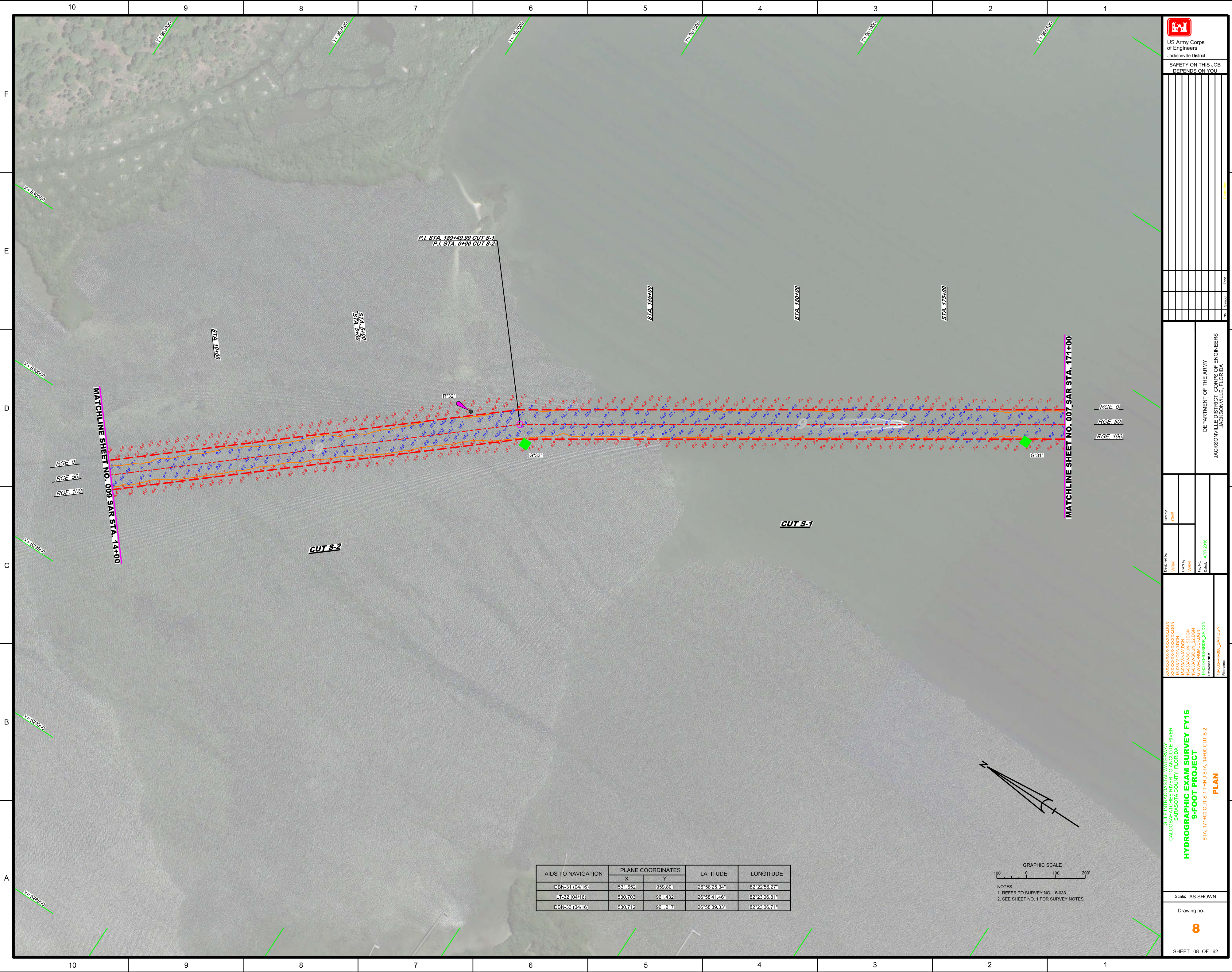












US Army Corps of Engineers  
Jacksonville District

SAFETY ON THIS JOB  
DEPENDS ON YOU

No.	Symbol	Zone

DEPARTMENT OF THE ARMY
JACKSONVILLE DISTRICT, CORPS OF ENGINEERS

Designed by: WRM
Checked by: WRM

Drawn by: WRM
Checked by: WRM

Date: APR 2018
Scale: AS SHOWN

XXXXXXXXXXXXXXXXXXXX.DGN
XXXXXXXXXXXXXXXXXXXX.DGN

XXXXXXXXXXXXXXXXXXXX.DGN
XXXXXXXXXXXXXXXXXXXX.DGN

XXXXXXXXXXXXXXXXXXXX.DGN
XXXXXXXXXXXXXXXXXXXX.DGN

XXXXXXXXXXXXXXXXXXXX.DGN
XXXXXXXXXXXXXXXXXXXX.DGN

XXXXXXXXXXXXXXXXXXXX.DGN
XXXXXXXXXXXXXXXXXXXX.DGN

XXXXXXXXXXXXXXXXXXXX.DGN
XXXXXXXXXXXXXXXXXXXX.DGN

XXXXXXXXXXXXXXXXXXXX.DGN
XXXXXXXXXXXXXXXXXXXX.DGN

XXXXXXXXXXXXXXXXXXXX.DGN
XXXXXXXXXXXXXXXXXXXX.DGN

XXXXXXXXXXXXXXXXXXXX.DGN
XXXXXXXXXXXXXXXXXXXX.DGN

**HYDROGRAPHIC EXAM SURVEY FY16**  
**9-FOOT PROJECT**  
PLAN

STA. 171+00 CUT S-1 THRU STA. 14+00 CUT S-2

GULF INTRACOSTAL WATERWAY RIVER
SARASOTA COUNTY, FLORIDA

Scale: AS SHOWN
Drawing no. **8**

SHEET 08 OF 62

AIDS TO NAVIGATION	PLANE COORDINATES		LATITUDE	LONGITUDE
	X	Y		
DBN-31 (04/16)	531.652	959.801	26°58'25.34"	82°22'56.27"
LT-32 (04/16)	530.703	951.432	26°58'41.26"	82°23'05.81"
DBN-33 (04/16)	530.712	951.217	26°58'39.33"	82°23'06.71"

GRAPHIC SCALE  
100' 0 100' 200'

NOTES:  
1. REFER TO SURVEY NO. 16-033.  
2. SEE SHEET NO. 1 FOR SURVEY NOTES.







AIDS TO NAVIGATION	PLANE COORDINATES		LATITUDE	LONGITUDE
	X	Y		
DBN-37A (04/16)	526.798	966.249	26°59'29.05"	82°23'50.14"
DBN-38 (04/16)	526.881	966.376	26°59'30.33"	82°23'43.24"
SIGN (04/16)	527.437	965.327	26°59'19.93"	82°23'43.05"
SIGN (04/16)	527.518	965.376	26°59'20.43"	82°23'42.16"
SIGN (04/16)	526.133	967.516	26°59'41.57"	82°23'57.54"

**US Army Corps of Engineers**  
Jacksonville District

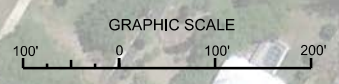
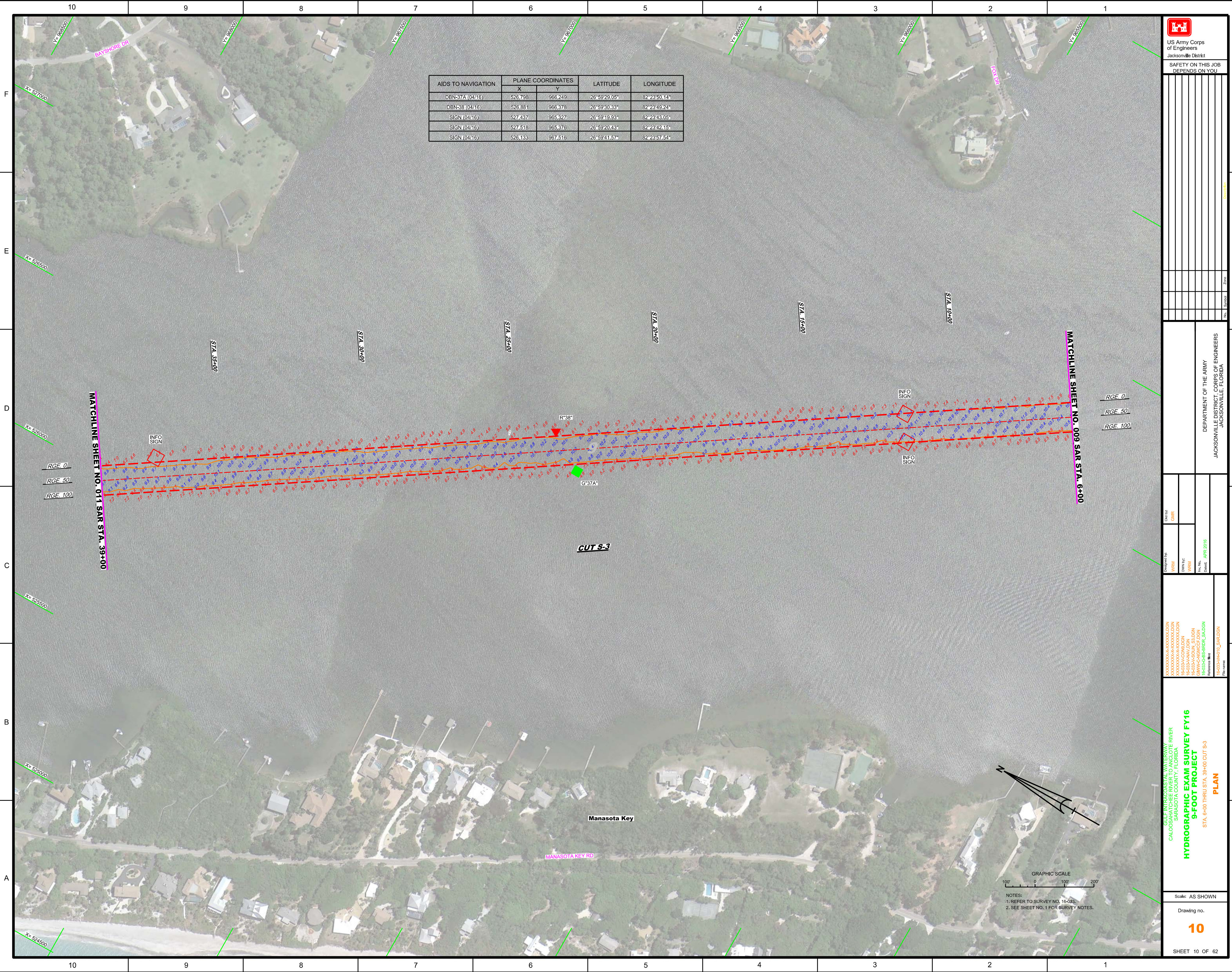
SAFETY ON THIS JOB DEPENDS ON YOU

DEPARTMENT OF THE ARMY  
JACKSONVILLE DISTRICT, CORPS OF ENGINEERS  
JACKSONVILLE, FLORIDA

Check By: GMR  
Designed By: WRM  
Drawn By: WRM  
File No.: 16-033-0009.DGN  
Project Name: GULF INTRACOASTAL WATERWAY RIVER CALOOCANY CANAL, SARASOTA COUNTY, FLORIDA  
Reference File: 16-033-0009.DGN

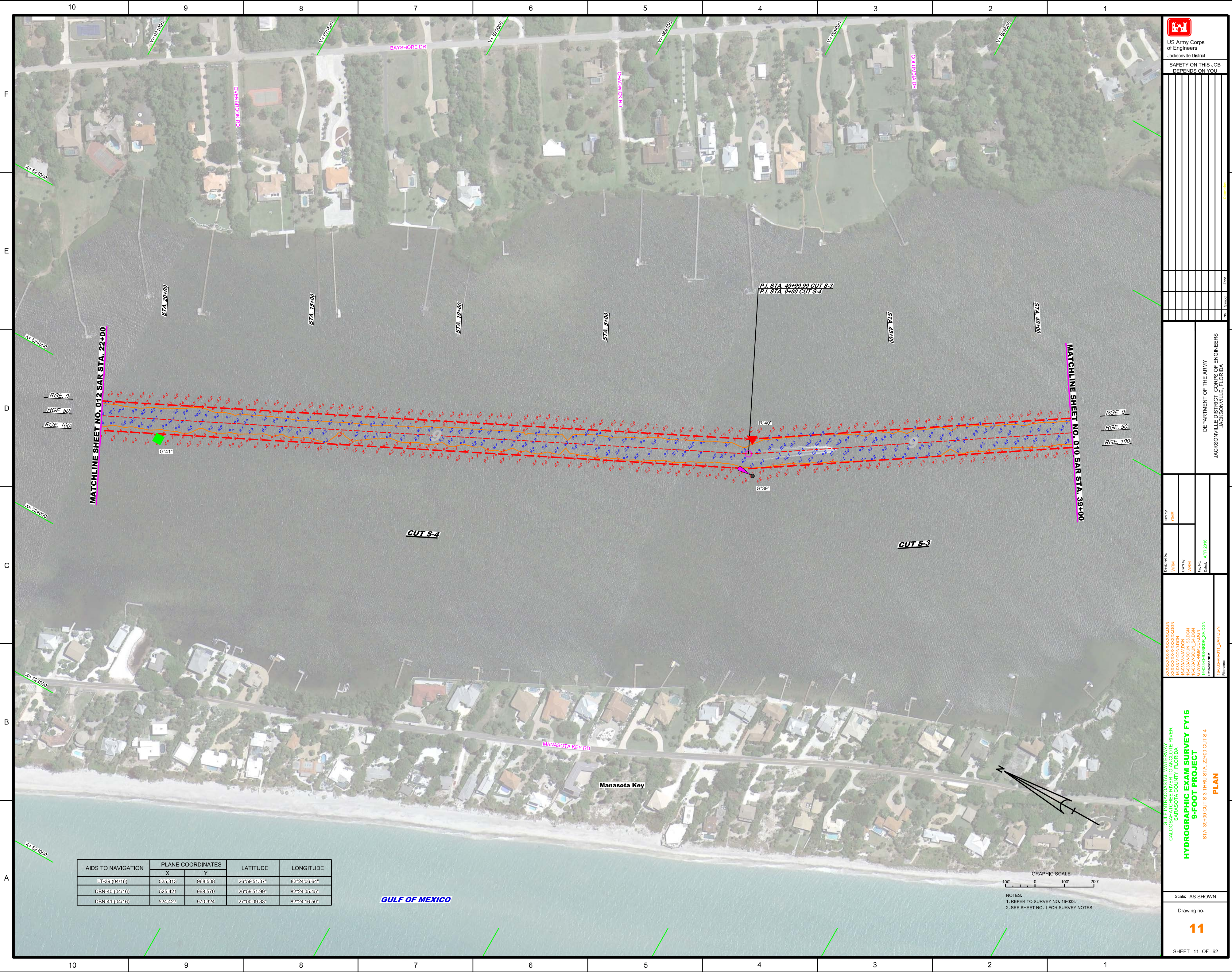
**HYDROGRAPHIC EXAM SURVEY FY16**  
**9-FOOT PROJECT**  
STA. 6+00 THRU STA. 39+00 CUT S-3  
**PLAN**


Scale: AS SHOWN  
Drawing no. **10**  
SHEET 10 OF 62



NOTES:  
1. REFER TO SURVEY NO. 16-033.  
2. SEE SHEET NO. 1 FOR SURVEY NOTES.






  
 US Army Corps of Engineers  
 Jacksonville District  
 SAFETY ON THIS JOB  
 DEPENDS ON YOU

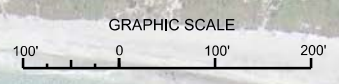
DEPARTMENT OF THE ARMY  
 JACKSONVILLE DISTRICT, CORPS OF ENGINEERS  
 JACKSONVILLE, FLORIDA

Designated By: WRM  
 Design: APR 2016  
 File Name: 16-033-0101\_L\_SAR.DGN  
 Reference File: 16-033-0101\_L\_SAR.DGN

**GULF INTRACOASTAL WATERWAY TO THE RIVER**  
**SARASOTA COUNTY, FLORIDA**  
**HYDROGRAPHIC EXAM SURVEY FY16**  
**9-FOOT PROJECT**  
 STA. 39+00 CUT S-3 THRU STA. 22+00 CUT S-4  
**PLAN**

Scale: AS SHOWN  
 Drawing no.  
**11**  
 SHEET 11 OF 62

AIDS TO NAVIGATION	PLANE COORDINATES		LATITUDE	LONGITUDE
	X	Y		
LT-39 (04/16)	525,313	968,508	26°59'51.37"	82°24'06.64"
DBN-40 (04/16)	525,421	968,570	26°59'51.99"	82°24'05.45"
DBN-41 (04/16)	524,427	970,324	27°00'09.33"	82°24'16.50"



NOTES:  
 1. REFER TO SURVEY NO. 16-033.  
 2. SEE SHEET NO. 1 FOR SURVEY NOTES.

GULF OF MEXICO

Manasota Key

MATCHLINE SHEET NO. 012 SAR STA. 22+00

MATCHLINE SHEET NO. 010 SAR STA. 39+00

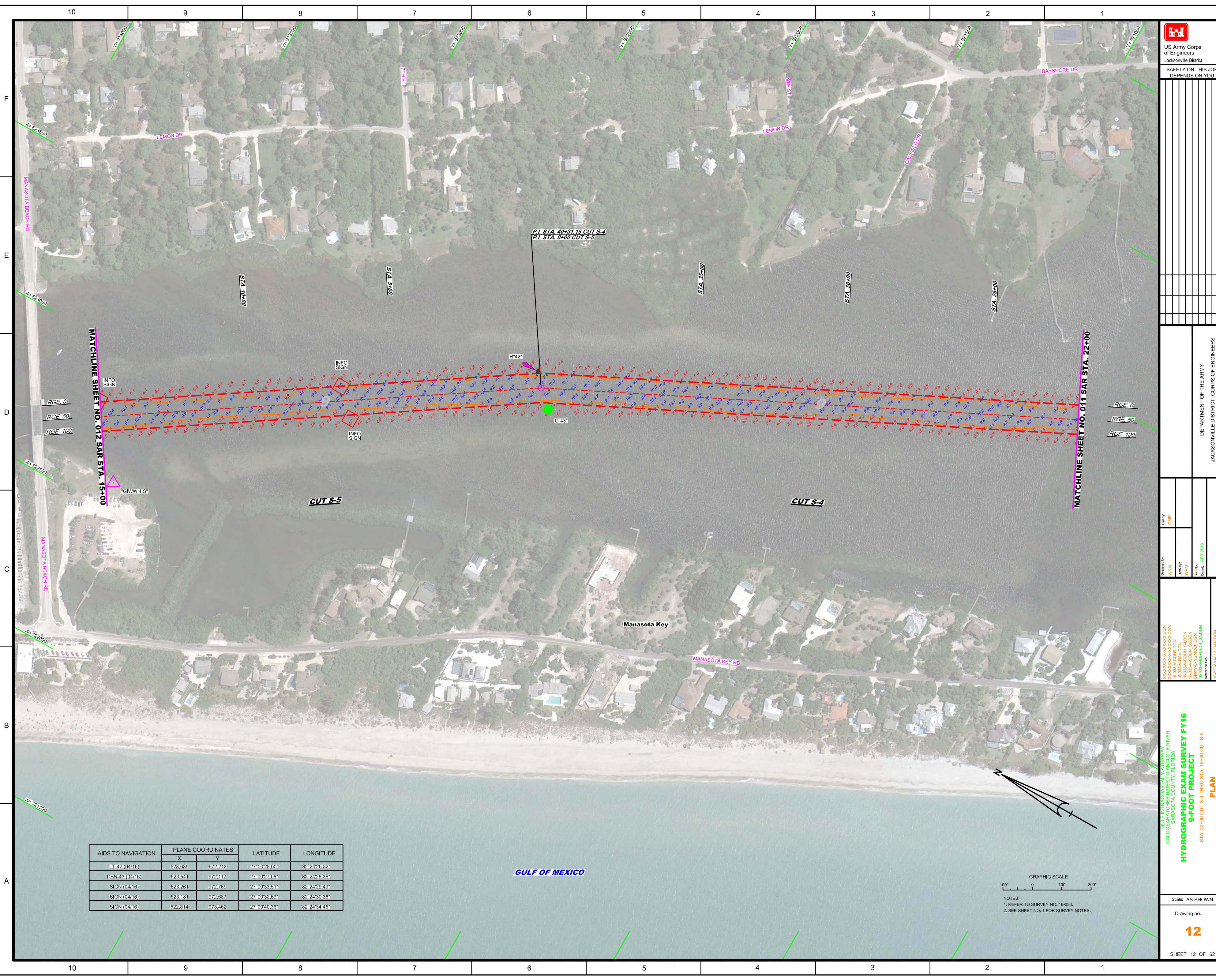
P.I. STA. 49+99.99 CUT S-3  
P.I. STA. 0+00 CUT S-4


CUT S-4

CUT S-3

STA. 20+00 STA. 15+00 STA. 10+00 STA. 5+00 STA. 45+00 STA. 40+00  
 RGE. 0 RGE. 50 RGE. 100






 US Army Corps of Engineers  
 Jacksonville District  
 SAFETY ON THIS JOB  
 DEPENDS ON YOU

DEPARTMENT OF THE ARMY  
 JACKSONVILLE DISTRICT, CORPS OF ENGINEERS  
 JACKSONVILLE, FLORIDA

GULF INTRACOASTAL WATERWAY  
 CALOOCHEE RIVER  
 SARASOTA COUNTY, FLORIDA  
**HYDROGRAPHIC EXAM SURVEY FY16**  
**9-FOOT PROJECT**  
 STA. 22+00 CUT S-4 THRU STA. 15+00 CUT S-5  
**PLAN**

Scale: AS SHOWN  
 Drawing no.  
**12**  
 SHEET 12 OF 62

AIDS TO NAVIGATION	PLANE COORDINATES		LATITUDE	LONGITUDE
	X	Y		
LT-42 (04/16)	523,636	972,212	27°00'28.00"	82°24'25.32"
DBN-43 (04/16)	523,541	972,117	27°00'27.06"	82°24'26.36"
SIGN (04/16)	523,261	972,769	27°00'33.51"	82°24'29.49"
SIGN (04/16)	523,181	972,687	27°00'32.69"	82°24'30.36"
SIGN (04/16)	522,814	973,462	27°00'40.36"	82°24'34.45"

GRAPHIC SCALE  
 100' 0 100' 200'  
 NOTES:  
 1. REFER TO SURVEY NO. 16-033.  
 2. SEE SHEET NO. 1 FOR SURVEY NOTES.











