

IWW - JACKSONVILLE TO MIAMI CUTS SJ-28 THRU SJ-30A ST JOHNS COUNTY, FL 10 AND 12-FOOT PROJECT EXAMINATION SURVEY FY16

US Army Corps of Engineers Jacksonville District	
SAFETY ON THIS JOB DEPENDS ON YOU	

DEPARTMENT OF THE ARMY
JACKSONVILLE DISTRICT, CORPS OF ENGINEERS
JACKSONVILLE, FLORIDA

Designed by: WMW Drawn by: WMW Checked by: WMW	Date by: GHR Date: FEB 2016
--	--------------------------------

SURVEY NOTES

- REFER TO SURVEY NO. 16-021.
- SOUNDINGS ARE IN FEET AND TENTHS AND REFER TO NOAA'S REPORTED MEAN LOWER LOW WATER (MLLW) OF THE 1983-2001 TIDAL EPOCH.
- TIDAL REDUCTIONS WERE OBTAINED UTILIZING A REAL-TIME KINEMATIC (RTK) GPS AND REFERENCED TO MLLW UTILIZING A HYPACK KINEMATIC TIDE DATUM (KTD) MODEL. KTD FILE NAME IS: "CAMDENG-NASSAU-DUVAL-STJOHNS-FLAGLER-01FEB2011.KTD".
- ALL ELEVATIONS ARE BELOW THE CHART DATUM UNLESS PRECEDED BY A (+) SIGN.
- PLANE COORDINATES ARE BASED ON THE TRANSVERSE MERCATOR PROJECTION FOR THE EAST ZONE OF FLORIDA AND REFERENCED TO NORTH AMERICAN DATUM OF 1983 (NAD83).
- ALL STATIONING REFERS TO THE CENTERLINE OF THE CHANNEL.
- THIS SURVEY WAS PERFORMED USING REAL-TIME KINEMATIC (RTK) GPS POSITIONING WITH THE FOLLOWING REFERENCE BASE LOCATIONS:
REFERENCE BASE LOCATED AT "RAMP RESET" (PID: BBCB11)
- DEPTHS DEPICTED BY THIS SURVEY ARE REFERENCED TO MLLW, TIDAL EPOCH 1983-2001 AS REPORTED BY THE NATIONAL OCEANIC AND ATMOSPHERIC ADMINISTRATION (NOAA). NOAA'S DATUM MODEL WAS USED AND CALIBRATED TO THE PUBLISHED MLLW HEIGHTS OF THE BENCHMARKS ASSOCIATED WITH THE TIDE GAGE SITES SPECIFIED BELOW:
NOAA TIDAL STATION 872-0554 B USED FOR CUTS SJ-28A THRU SJ-30 (PID: DL5712)
VERTICAL MEASUREMENTS WERE MADE USING A ROSS SMARTSOUNDER 835B DUAL-FREQUENCY 28/200 KHZ TRANSDUCER. ALL SOUNDINGS SHOWN ARE IN HIGH FREQUENCY.

VESSEL	DATE OF SURVEY	CUT
SB-48	06 JAN 2016	SJ-28 THRU SJ-30A

- AIDS TO NAVIGATION WERE LOCATED DURING THIS SURVEY.
- THE INFORMATION DEPICTED ON THIS MAP REPRESENTS THE RESULTS OF SURVEYS MADE ON THE DATES INDICATED ABOVE AND CAN ONLY BE CONSIDERED AS INDICATING THE GENERAL CONDITIONS AT THAT TIME. THIS CHART IS SOLELY FOR THE DISTRIBUTION OF AVAILABLE DEPTHS AT THE TIME OF THE SURVEY.
- SURVEY ACCURACY PERFORMANCE STANDARDS, QUALITY CONTROL, AND QUALITY ASSURANCE REQUIREMENTS WERE FOLLOWED DURING THIS SURVEY IN ACCORDANCE WITH USACE EM 1110-2-1003, HYDROGRAPHIC SURVEYING, 30 NOV 13.

LEGEND	
	MONUMENT
	LIGHTED BEACON
	GREEN DAY BEACON
	RED DAY BEACON
	RED LIGHTED BUOY
	GREEN LIGHTED BUOY
	CAN BUOY
	NUN BUOY
	TIDE STAFF
	PROJECT DEPTH

INTRACOASTAL WATERWAY
JACKSONVILLE TO MIAMI, FLORIDA
ST JOHNS COUNTY
**EXAMINATION SURVEY FY16
10 AND 12-FOOT PROJECT**
INDEX, LOCATION AND VICINITY
MAP



US Army Corps of Engineers
Jacksonville District

SAFETY ON THIS JOB
DEPENDS ON YOU

DEPARTMENT OF THE ARMY
JACKSONVILLE DISTRICT, CORPS OF ENGINEERS
JACKSONVILLE, FLORIDA

Checked By: GHR
Designed By: WRM
Drawn By: WRM
File No.: W8225A-00-00-000
Date: FEB 2016

XXXXXXXXXXXXXXXXXXXX
XXXXXXXXXXXXXXXXXXXX
XXXXXXXXXXXXXXXXXXXX
16-02-1A-00-01-000
16-02-1A-00-02-000
16-02-1A-00-03-000
16-02-1A-00-04-000
16-02-1A-00-05-000
16-02-1A-00-06-000
16-02-1A-00-07-000
16-02-1A-00-08-000
16-02-1A-00-09-000
16-02-1A-00-10-000
16-02-1A-00-11-000
16-02-1A-00-12-000
16-02-1A-00-13-000
16-02-1A-00-14-000
16-02-1A-00-15-000
16-02-1A-00-16-000
16-02-1A-00-17-000
16-02-1A-00-18-000
16-02-1A-00-19-000
16-02-1A-00-20-000
16-02-1A-00-21-000
16-02-1A-00-22-000
16-02-1A-00-23-000
16-02-1A-00-24-000
16-02-1A-00-25-000
16-02-1A-00-26-000
16-02-1A-00-27-000
16-02-1A-00-28-000
16-02-1A-00-29-000
16-02-1A-00-30-000
16-02-1A-00-31-000
16-02-1A-00-32-000
16-02-1A-00-33-000
16-02-1A-00-34-000
16-02-1A-00-35-000
16-02-1A-00-36-000
16-02-1A-00-37-000
16-02-1A-00-38-000
16-02-1A-00-39-000
16-02-1A-00-40-000
16-02-1A-00-41-000
16-02-1A-00-42-000
16-02-1A-00-43-000
16-02-1A-00-44-000
16-02-1A-00-45-000
16-02-1A-00-46-000
16-02-1A-00-47-000
16-02-1A-00-48-000
16-02-1A-00-49-000
16-02-1A-00-50-000
16-02-1A-00-51-000
16-02-1A-00-52-000
16-02-1A-00-53-000
16-02-1A-00-54-000
16-02-1A-00-55-000
16-02-1A-00-56-000
16-02-1A-00-57-000
16-02-1A-00-58-000
16-02-1A-00-59-000
16-02-1A-00-60-000
16-02-1A-00-61-000
16-02-1A-00-62-000
16-02-1A-00-63-000
16-02-1A-00-64-000
16-02-1A-00-65-000
16-02-1A-00-66-000
16-02-1A-00-67-000
16-02-1A-00-68-000
16-02-1A-00-69-000
16-02-1A-00-70-000
16-02-1A-00-71-000
16-02-1A-00-72-000
16-02-1A-00-73-000
16-02-1A-00-74-000
16-02-1A-00-75-000
16-02-1A-00-76-000
16-02-1A-00-77-000
16-02-1A-00-78-000
16-02-1A-00-79-000
16-02-1A-00-80-000
16-02-1A-00-81-000
16-02-1A-00-82-000
16-02-1A-00-83-000
16-02-1A-00-84-000
16-02-1A-00-85-000
16-02-1A-00-86-000
16-02-1A-00-87-000
16-02-1A-00-88-000
16-02-1A-00-89-000
16-02-1A-00-90-000
16-02-1A-00-91-000
16-02-1A-00-92-000
16-02-1A-00-93-000
16-02-1A-00-94-000
16-02-1A-00-95-000
16-02-1A-00-96-000
16-02-1A-00-97-000
16-02-1A-00-98-000
16-02-1A-00-99-000
16-02-1A-00-100-000

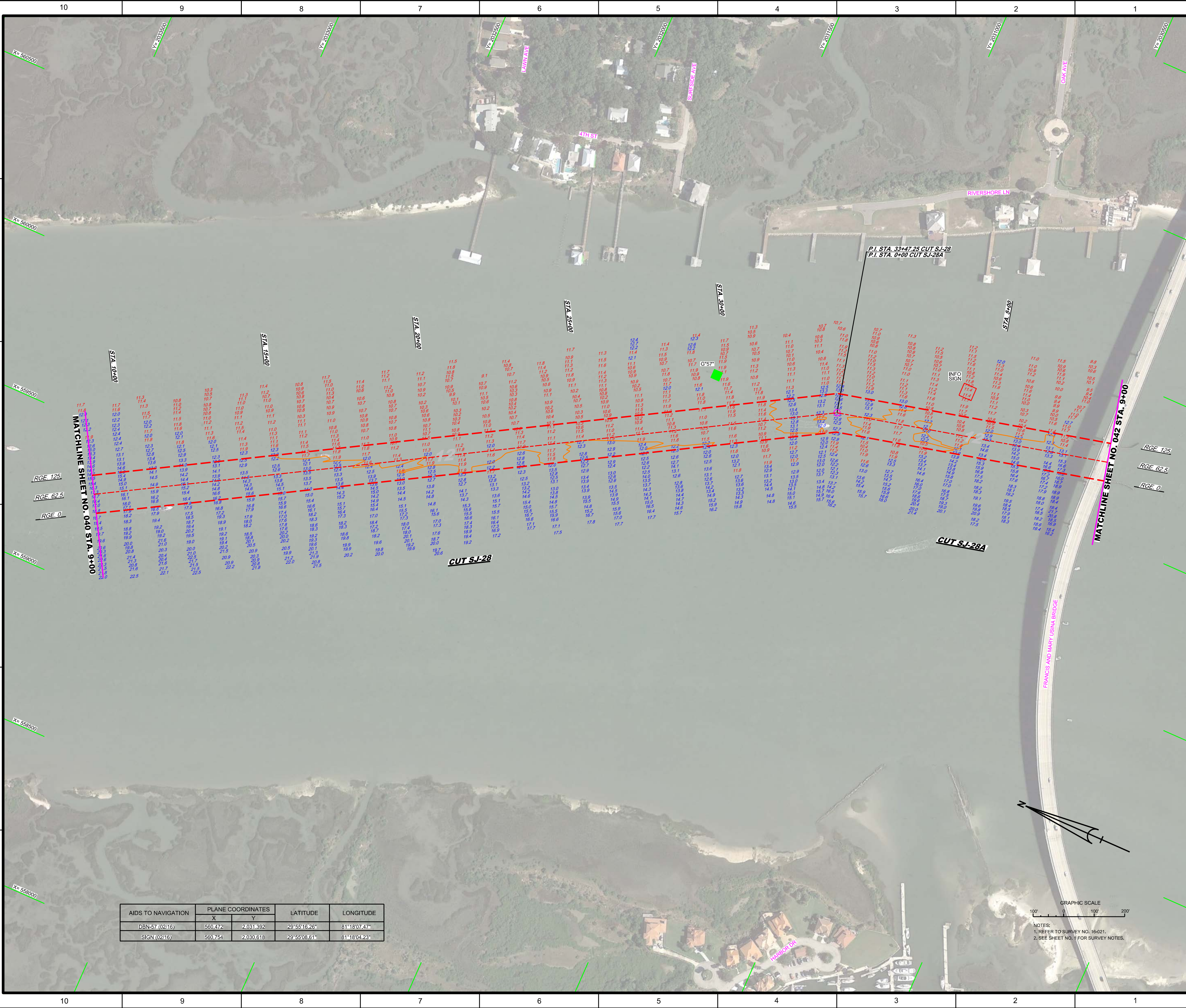
INTRACOASTAL WATERWAY
JACKSONVILLE TO MIAMI, FLORIDA
ST. JOHNS COUNTY
**EXAMINATION SURVEY FY16
10 AND 12-FOOT PROJECT**
STA. 9+00 CUT SJ-28 THRU STA. 9+00 CUT SJ-28A
PLAN

Scale: AS SHOWN

Drawing no.

3 / 6


SHEET 41 OF 73



AIDS TO NAVIGATION	PLANE COORDINATES		LATITUDE	LONGITUDE
	X	Y		
DBN-57 (0216)	560,472	2,031,392	29°55'16.26"	81°18'07.47"
SIGN (0216)	560,754	2,030,618	29°55'08.61"	81°18'04.23"



NOTES:
1. REFER TO SURVEY NO. 16-021.
2. SEE SHEET NO. 1 FOR SURVEY NOTES.



US Army Corps of Engineers
Jacksonville District

**SAFETY ON THIS JOB
DEPENDS ON YOU**

DEPARTMENT OF THE ARMY
JACKSONVILLE DISTRICT, CORPS OF ENGINEERS
JACKSONVILLE, FLORIDA

Checked by: GHR

Designed by: WRM

Drawn by: WRM

File No: W02255-NA-A-0004

Contract: FEB 2016

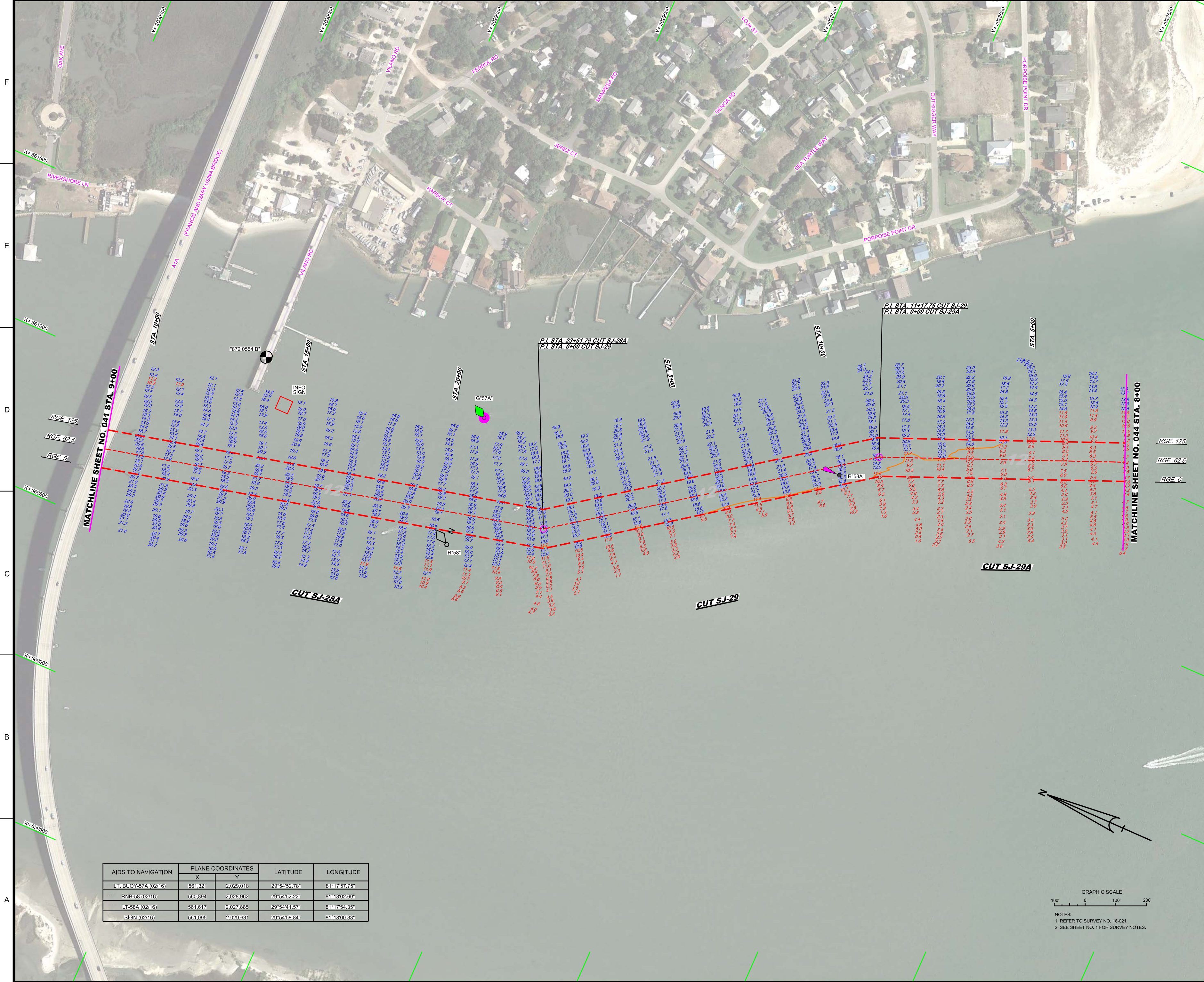
INTRACOASTAL WATERWAY
JACKSONVILLE TO MIAMI, FLORIDA
ST. JOHN'S COUNTY
**EXAMINATION SURVEY FY16
10 AND 12-FOOT PROJECT**
STA. 9+00 CUT SJ-28A THRU STA. 9+00 CUT-29A

Reference Map: 16-02 HYPERALDGN

Scale: AS SHOWN

Drawing No: **4 / 6**

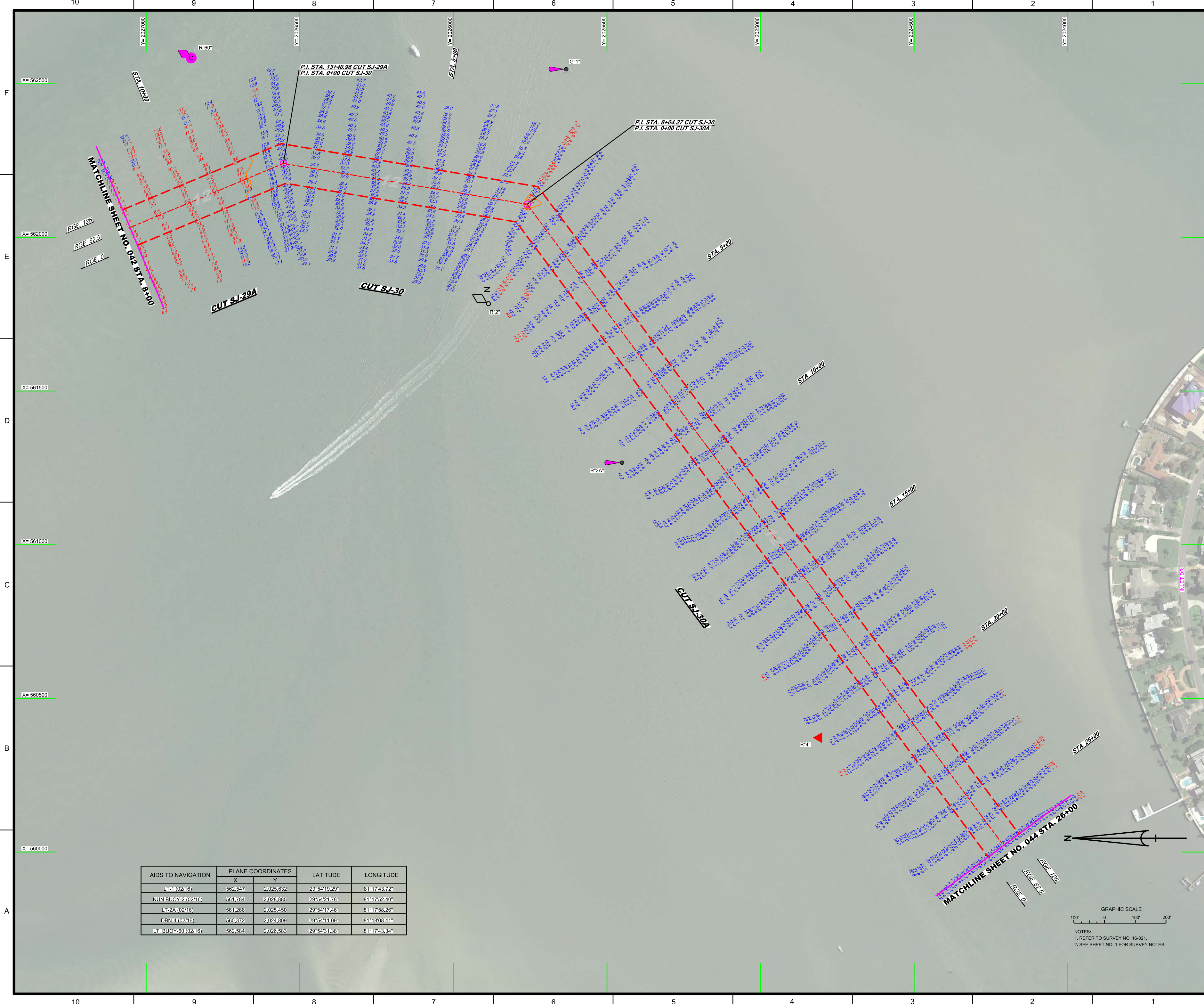
SHEET 42 OF 73



AIDS TO NAVIGATION	PLANE COORDINATES		LATITUDE	LONGITUDE
	X	Y		
LT. BUOY-57A (0216)	561.321	2,029.018	29°54'52.78"	81°17'57.75"
RNB-58 (0216)	560.894	2,028.962	29°54'52.22"	81°18'02.60"
LT-58A (0216)	561.617	2,027.885	29°54'41.57"	81°17'54.35"
SIGN (0216)	561.095	2,029.631	29°54'58.84"	81°18'00.33"

GRAPHIC SCALE
1" = 100'

NOTES:
1. REFER TO SURVEY NO. 16-021.
2. SEE SHEET NO. 1 FOR SURVEY NOTES.



AIDS TO NAVIGATION	PLANE COORDINATES		LATITUDE	LONGITUDE
	X	Y		
LT-1 (0216)	562.547	2.025.632	29°54'19.29"	81°17'43.72"
NUN BUOY-2 (0216)	561.784	2.028.885	29°54'21.78"	81°17'52.40"
LT-2A (0216)	561.266	2.025.450	29°54'17.46"	81°17'58.26"
DBN-4 (0216)	560.372	2.024.809	29°54'11.09"	81°18'08.41"
LT BUOY-50 (0216)	562.584	2.026.583	29°54'31.38"	81°17'43.34"

No.	Symbol	Zone

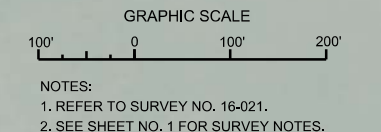
DEPARTMENT OF THE ARMY
 JACKSONVILLE DISTRICT, CORPS OF ENGINEERS
 JACKSONVILLE, FLORIDA

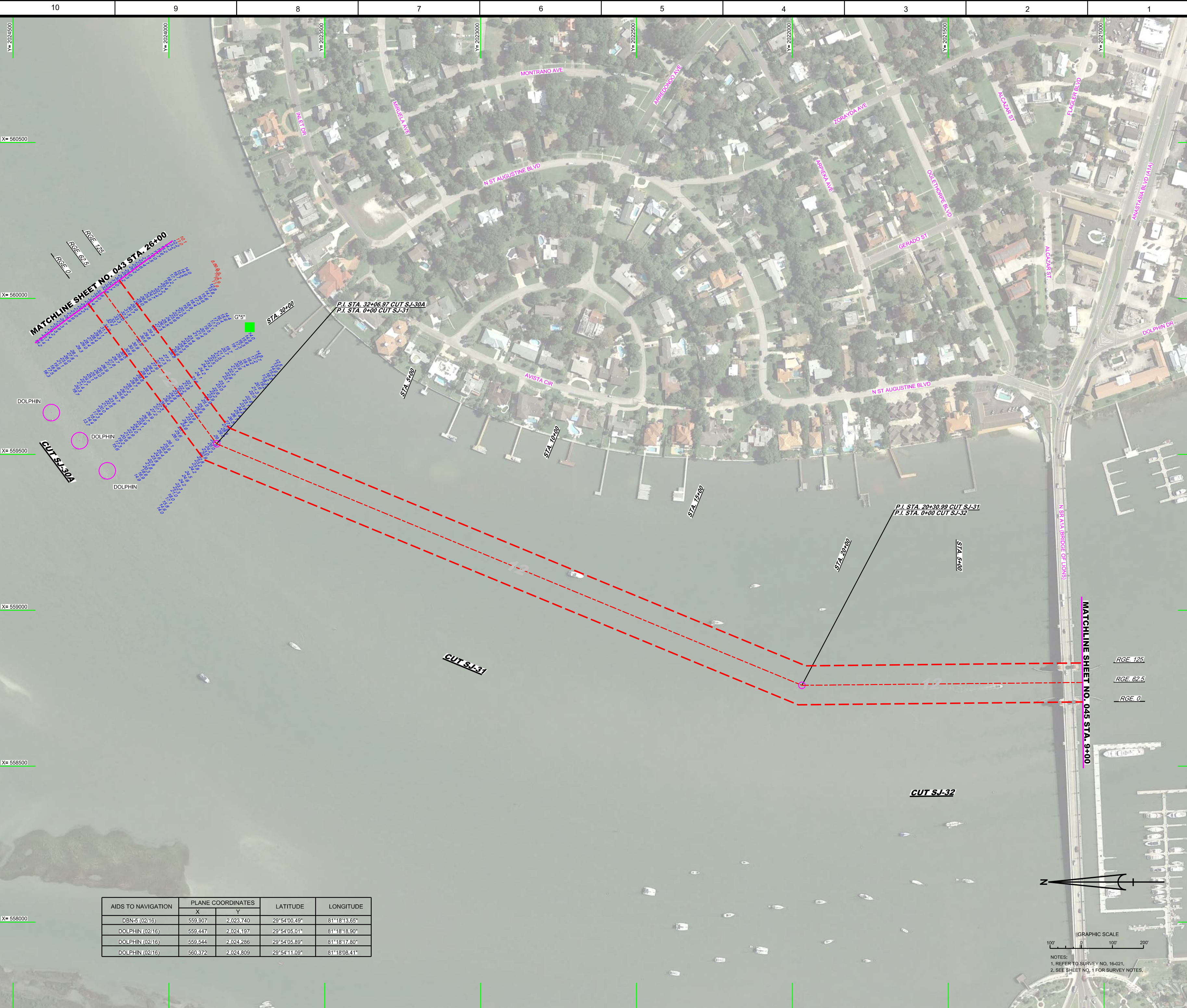
Checked by: GHR
 Designed by: WRM
 Drawn by: WRM
 File No.: W81255-00-00-0004
 Date: FEB 2016

XXXXXXXXXXXXXXXXXXXX
 16-021-HAWAII-DGN
 16-021-ADDN-SUB-DGN
 16-021-ADDN-SUB-DGN
 WYAC-CANAL-EG-DGN
 16-021-EG-SB-RRR-SUDGN
 16-021-HAWAII-DGN

INTRACOASTAL WATERWAY
 JACKSONVILLE TO MIAMI, FLORIDA
 ST. JOHN'S COUNTY
**EXAMINATION SURVEY FY16
 10 AND 12-FOOT PROJECT**
 STA. 8+00 CUT S.J-29A THRU STA. 26+00 CUT-30A
PLAN

Scale: AS SHOWN
 Drawing no.
5 / 6
 SHEET 43 OF 73





US Army Corps of Engineers
Jacksonville District
SAFETY ON THIS JOB
DEPENDS ON YOU

DEPARTMENT OF THE ARMY
JACKSONVILLE DISTRICT, CORPS OF ENGINEERS
JACKSONVILLE, FLORIDA

Drawn by: WRM
Checked by: GHR
Date: FEB 2016

INTRACOASTAL WATERWAY
JACKSONVILLE TO MIAMI, FLORIDA
ST. JOHNS COUNTY
**EXAMINATION SURVEY FY16
10 AND 12-FOOT PROJECT**
PLAN
STA. 28+00 CUT S.J-30A THRU STA. 9+00 CUT S.J-32

AIDS TO NAVIGATION	PLANE COORDINATES		LATITUDE	LONGITUDE
	X	Y		
DBN-5 (0216)	559,907	2,023,740	29°54'00.49"	81°18'13.65"
DOLPHIN (0216)	559,447	2,024,197	29°54'05.01"	81°18'18.90"
DOLPHIN (0216)	559,544	2,024,286	29°54'05.89"	81°18'17.80"
DOLPHIN (0216)	560,372	2,024,809	29°54'11.09"	81°18'08.41"

GRAPHIC SCALE
100' 0 100' 200'

NOTES:
1. REFER TO SURVEY NO. 16-021.
2. SEE SHEET NO. 1 FOR SURVEY NOTES.

Scale: AS SHOWN
Drawing no.
6 / 6
SHEET 44 OF 73