

SUWANNEE RIVER - MCGRIFF PASS DIXIE & LEVY COUNTY, FL PROJECT CONDITION SURVEY FY16 6-FOOT PROJECT

SURVEY NOTES

- REFER TO SURVEY NO. 16-007.
- SOUNDINGS ARE IN FEET AND TENTHS AND REFER TO NOAA'S REPORTED MEAN LOWER LOW WATER (MLLW) OF THE 1983-2001 TIDAL EPOCH.
- TIDAL REDUCTIONS WERE OBTAINED UTILIZING A REAL-TIME KINEMATIC (RTK) GPS AND REFERENCED TO MLLW UTILIZING A HYPACK KINEMATIC TIDE DATUM (KTD) MODEL. KTD FILE NAME: "SPC-FL-WEST-2010-12-07.KTD".
- ALL ELEVATIONS ARE BELOW THE CHART DATUM UNLESS PRECEDED BY A (+) SIGN.
- PLANE COORDINATES ARE BASED ON THE TRANSVERSE MERCATOR PROJECTION FOR THE WEST ZONE OF FLORIDA AND REFERENCED TO NORTH AMERICAN DATUM OF 1983 (NAD83).
- ALL STATIONING REFERS TO THE CENTERLINE OF THE CHANNEL.
- THIS SURVEY WAS PERFORMED USING REAL-TIME KINEMATIC (RTK) GPS POSITIONING WITH THE FOLLOWING REFERENCE BASE LOCATION:
REFERENCE BASE LOCATED AT "SUWANNEE 1" (PID: 8BF875)
- DEPTHS DEPICTED BY THIS SURVEY ARE REFERENCED TO MLLW, TIDAL EPOCH 1983-2001 AS REPORTED BY THE NATIONAL OCEANIC AND ATMOSPHERIC ADMINISTRATION (NOAA). NOAA'S DATUM MODEL WAS USED AND CALIBRATED TO THE PUBLISHED MLLW HEIGHTS OF THE BENCHMARKS ASSOCIATED WITH THE TIDE GAGE SITES SPECIFIED BELOW:
NOAA TIDAL STATION 872-7577 USED FOR ALL CUTS. (PID: AR1597)
VERTICAL MEASUREMENTS WERE MADE USING A ROSS SMART SOUNDER 835 SINGLE-BEAM TRANSDUCER OPERATING AT 200 KHZ (HIGH FREQUENCY). ALL SOUNDINGS SHOWN ARE IN HIGH FREQUENCY.
- VESSEL: SB-40 DATE OF SURVEY: 26-27 APR 2016 CUT: CUTS 1 -11
- AIDS TO NAVIGATION WERE LOCATED DURING THIS SURVEY.
- THE INFORMATION DEPICTED ON THIS MAP REPRESENTS THE RESULTS OF SURVEYS MADE ON THE DATES INDICATED ABOVE AND CAN ONLY BE CONSIDERED AS INDICATING THE GENERAL CONDITIONS AT THAT TIME. THIS CHART IS SOLELY FOR THE DISTRIBUTION OF AVAILABLE DEPTHS AT THE TIME OF THE SURVEY.
- SURVEY ACCURACY PERFORMANCE STANDARDS, QUALITY CONTROL, AND QUALITY ASSURANCE REQUIREMENTS WERE FOLLOWED DURING THIS SURVEY IN ACCORDANCE WITH USACE EM 1110-2-1003, HYDROGRAPHIC SURVEYING, 30 NOV 13.

LEGEND	
	MONUMENT
	LIGHTED BEACON
	GREEN DAYBEACON
	RED DAYBEACON
	RED LIGHTED BUOY
	GREEN LIGHTED BUOY
	CAN BUOY
	NUN BUOY
	TIDE STAFF
	PROJECT DEPTH

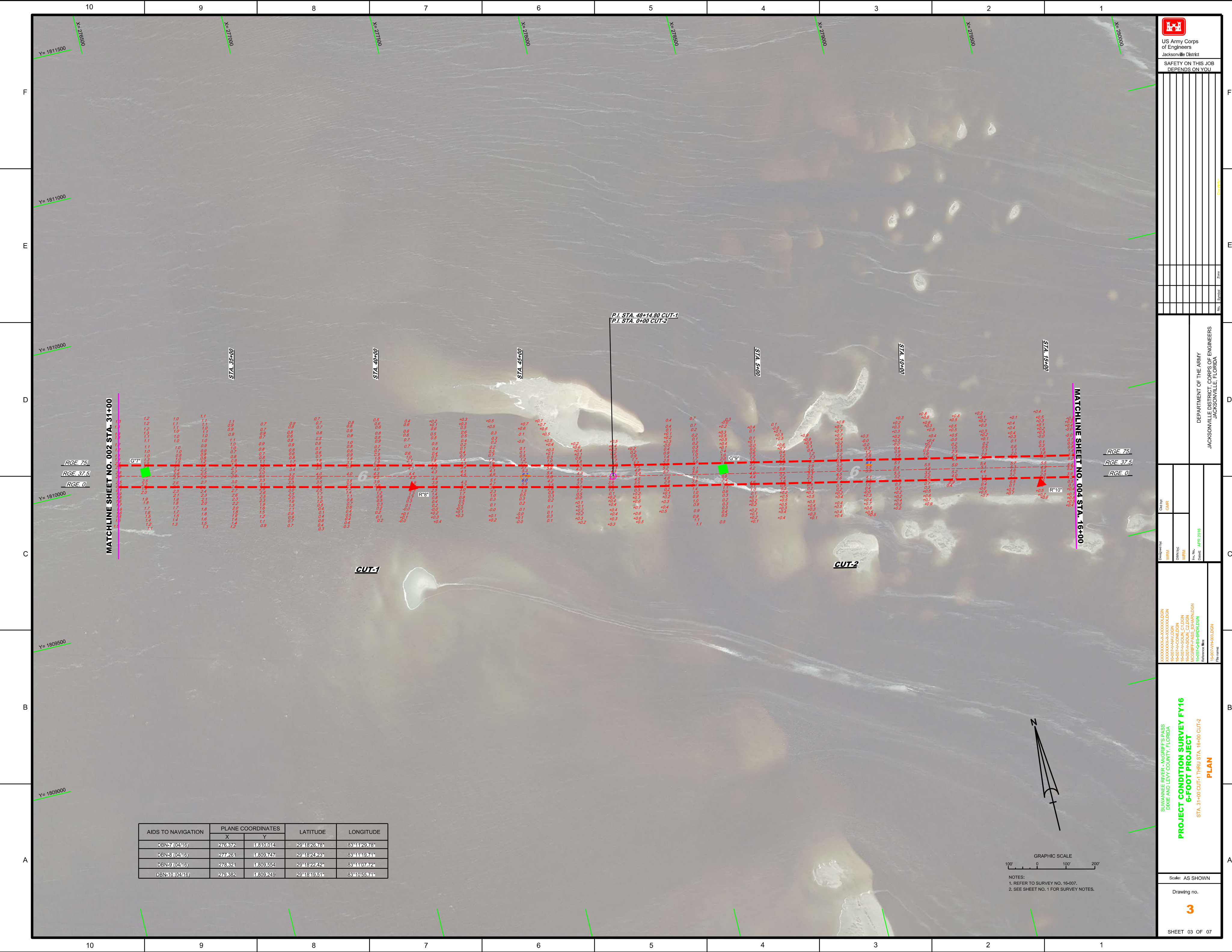
US Army Corps of Engineers
Jacksonville District
SAFETY ON THIS JOB DEPENDS ON YOU

DEPARTMENT OF THE ARMY
JACKSONVILLE DISTRICT, CORPS OF ENGINEERS
JACKSONVILLE, FLORIDA

Checked by: GHR
Designed by: WRM
Drawn by: WRM
File Name: 16-007-6-BS-BR16.DGN
Date: APR 2016

SUWANNEE RIVER - MCGRIFF'S PASS
DIXIE AND LEVY COUNTY, FLORIDA
**PROJECT CONDITION SURVEY FY16
6-FOOT PROJECT**
INDEX, LOCATION AND VICINITY MAP

Scale: AS SHOWN
Drawing no. **1**
SHEET 01 OF 07



US Army Corps of Engineers
Jacksonville District

SAFETY ON THIS JOB
DEPENDS ON YOU

DEPARTMENT OF THE ARMY
JACKSONVILLE DISTRICT, CORPS OF ENGINEERS
JACKSONVILLE, FLORIDA

Checked by: GHR
Designed by: WRM
Drawn by: WRM
File No.: 16-007-H+R00L00N
Date: APR 2016

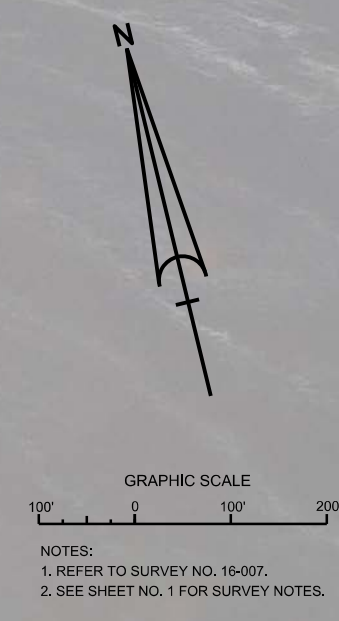
SUNNYSIDE RIVER - MCGRIFFS PASS
DIXIE AND LEVY COUNTY, FLORIDA

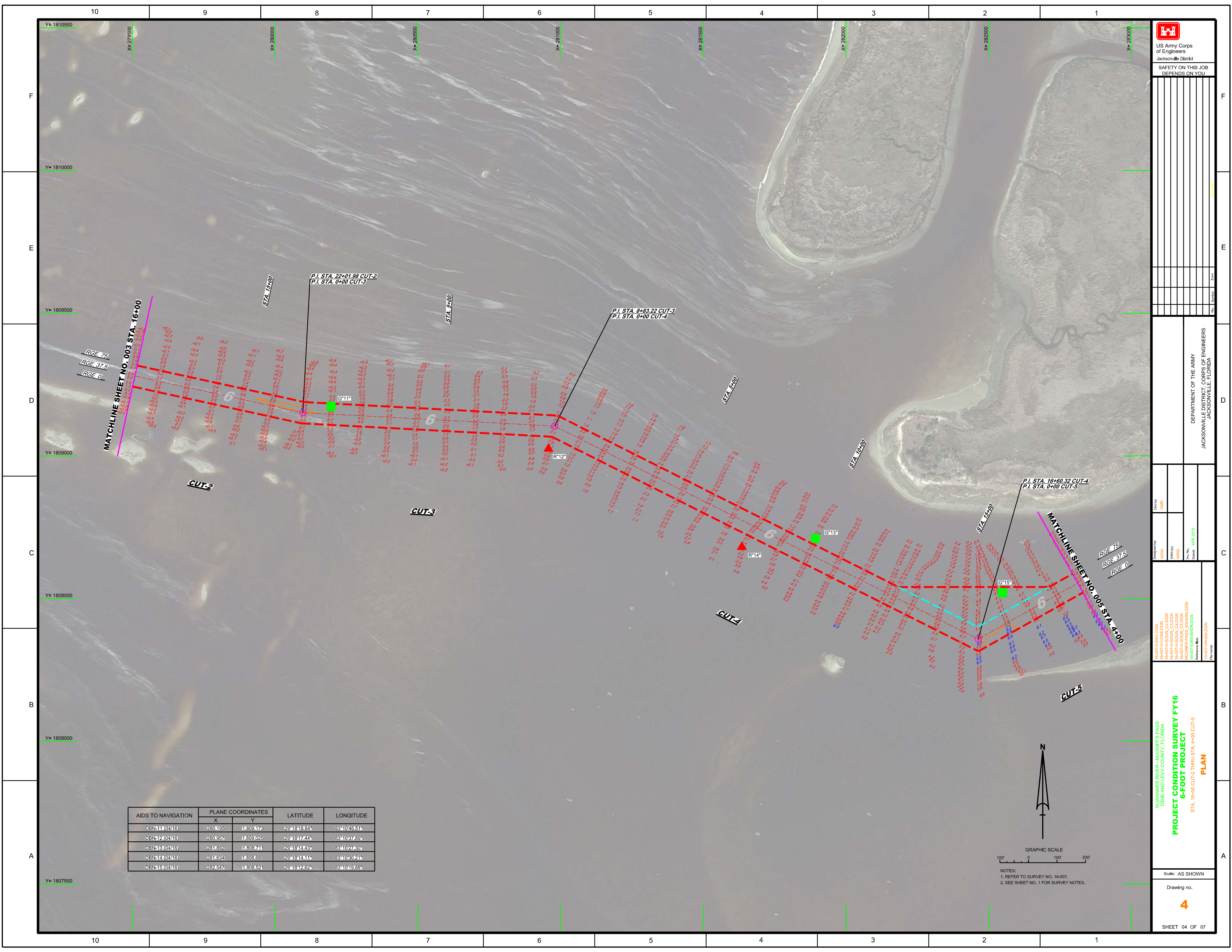
**PROJECT CONDITION SURVEY FY16
6-FOOT PROJECT**

STA. 31+00 CUT-1 THRU STA. 16+00 CUT-2

PLAN

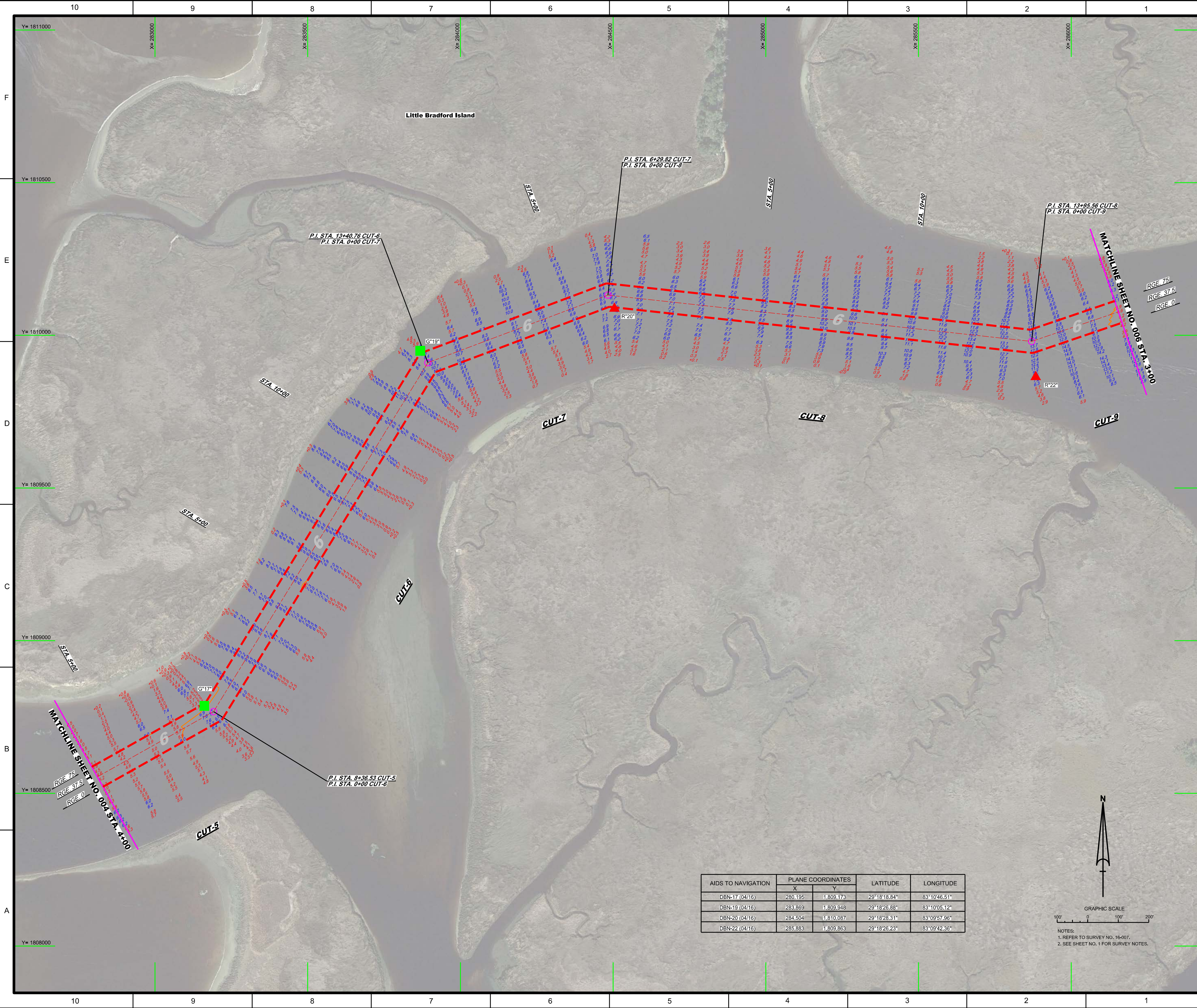
AIDS TO NAVIGATION	PLANE COORDINATES		LATITUDE	LONGITUDE
	X	Y		
DBN-7 (04/16)	276.372	1.810.014	29°18'26.78"	83°11'29.78"
DBN-8 (04/16)	277.261	1.809.747	29°18'24.23"	83°11'19.71"
DBN-9 (04/16)	278.321	1.809.554	29°18'22.42"	83°11'07.72"
DBN-10 (04/16)	278.382	1.809.249	29°18'19.51"	83°10'55.74"





AIDS TO NAVIGATION	PLANE COORDINATES		LATITUDE	LONGITUDE
	X	Y		
DBN-11 (0416)	280,195	1,809,176	29°18'18.84"	83°10'46.51"
DBN-12 (0416)	280,957	1,809,025	29°18'17.24"	83°10'37.89"
DBN-13 (0416)	281,692	1,808,711	29°18'14.45"	83°10'27.30"
DBN-14 (0416)	281,634	1,808,680	29°18'14.31"	83°10'30.21"
DBN-15 (0416)	282,547	1,808,521	29°18'12.62"	83°10'19.88"

GRAPHIC SCALE
100' 0 100' 200'
NOTES:
1. REFER TO SURVEY NO. 16-007.
2. SEE SHEET NO. 1 FOR SURVEY NOTES.



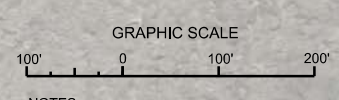
P.I. STA. 6+29.82 CUT-7
P.I. STA. 0+00 CUT-8

P.I. STA. 13+40.76 CUT-6
P.I. STA. 0+00 CUT-7

P.I. STA. 13+95.56 CUT-8
P.I. STA. 0+00 CUT-9

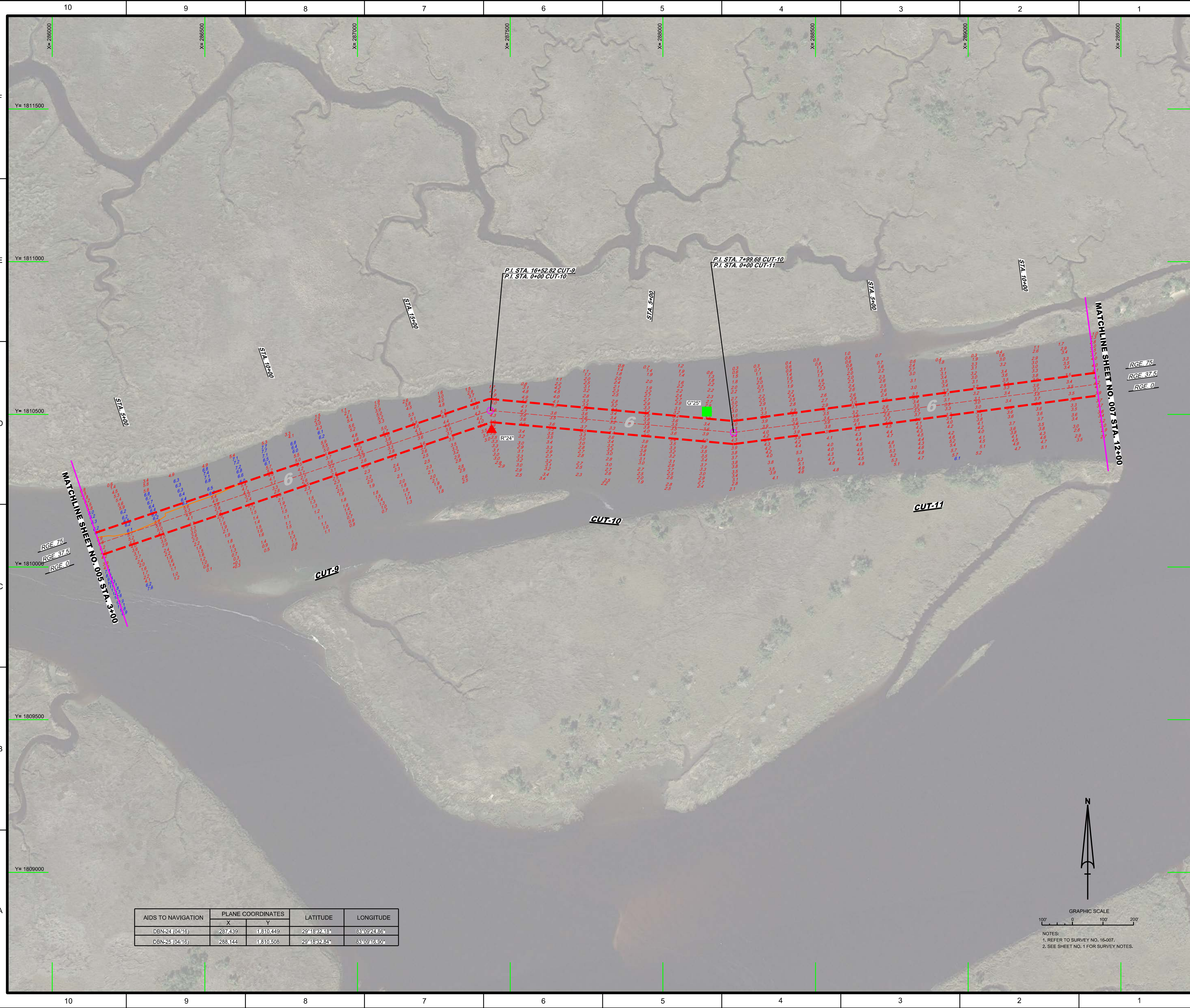
P.I. STA. 8+36.53 CUT-5
P.I. STA. 0+00 CUT-6

AIDS TO NAVIGATION	PLANE COORDINATES		LATITUDE	LONGITUDE
	X	Y		
DBN-17 (04/16)	280.195	1,809.173	29°18'18.84"	83°10'46.51"
DBN-19 (04/16)	283.869	1,809.948	29°18'26.88"	83°10'05.12"
DBN-20 (04/16)	284.504	1,810.087	29°18'28.31"	83°09'57.96"
DBN-22 (04/16)	285.883	1,809.863	29°18'26.23"	83°09'42.36"



NOTES:
1. REFER TO SURVEY NO. 16-007.
2. SEE SHEET NO. 1 FOR SURVEY NOTES.

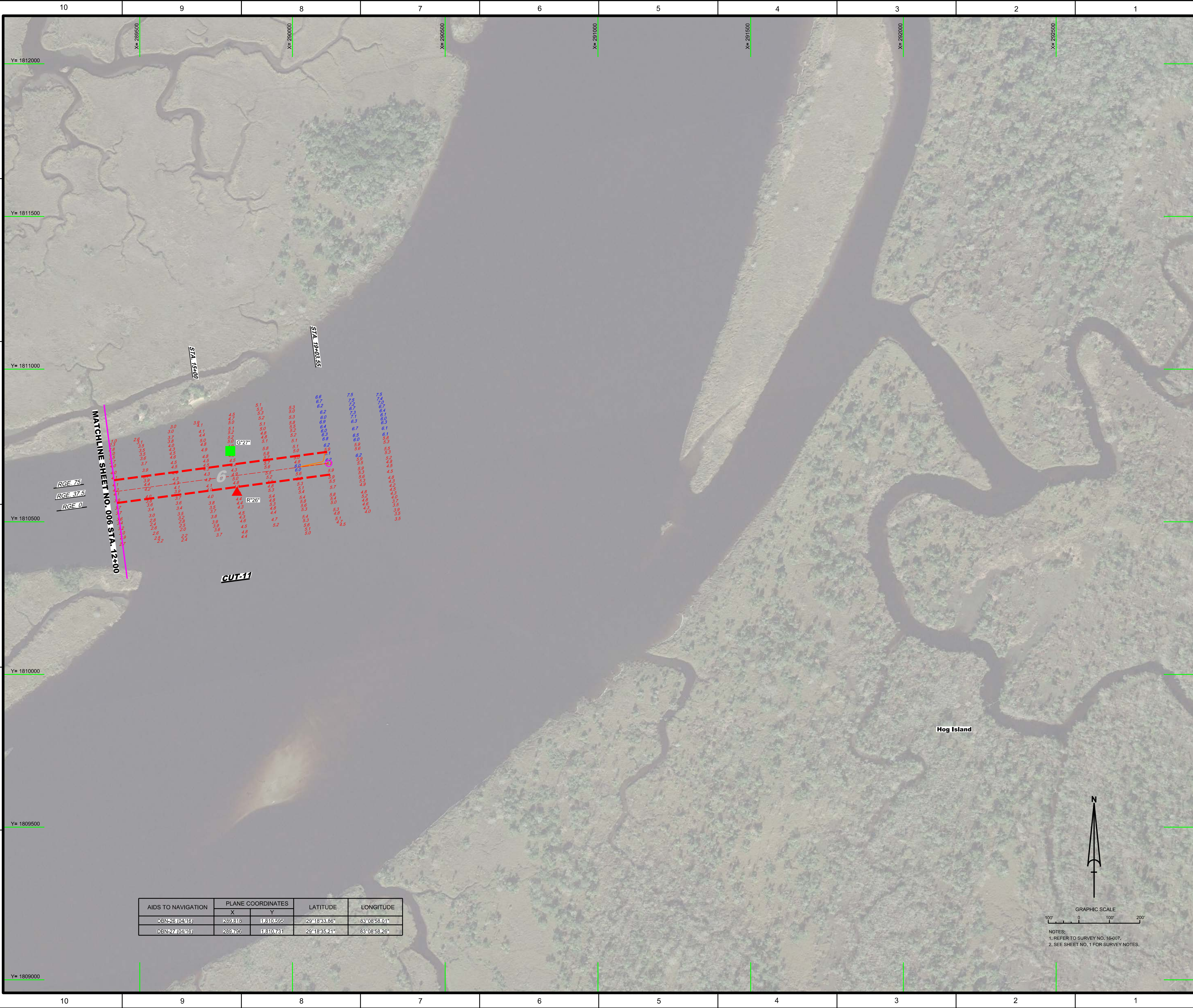




AIDS TO NAVIGATION	PLANE COORDINATES		LATITUDE	LONGITUDE
	X	Y		
DBN-24 (04/16)	287,439	1,810,449	29°18'32.18"	83°09'24.86"
DBN-25 (04/16)	288,144	1,810,508	29°18'32.84"	83°09'16.90"


GRAPHIC SCALE
100' 0 100' 200'

NOTES:
1. REFER TO SURVEY NO. 16-007.
2. SEE SHEET NO. 1 FOR SURVEY NOTES.



AIDS TO NAVIGATION	PLANE COORDINATES		LATITUDE	LONGITUDE
	X	Y		
DBN26 (0416)	289.818	1,810.695	29°18'33.86"	83°08'58.01"
DBN27 (0416)	289.765	1,810.731	29°18'35.21"	83°08'58.26"

NOTES:
 1. REFER TO SURVEY NO. 16-007.
 2. SEE SHEET NO. 1 FOR SURVEY NOTES.



US Army Corps of Engineers
 Jacksonville District

SAFETY ON THIS JOB
 DEPENDS ON YOU

DESIGNED BY: WRM DRAWN BY: WRM CHECKED BY: WRM DATE: APR 2018	CADD BY: GMR
DEPARTMENT OF THE ARMY JACKSONVILLE DISTRICT CORPS OF ENGINEERS JACKSONVILLE, FLORIDA	
PROJECT CONDITION SURVEY FY16 6-FOOT PROJECT STA. 12+00 THRU STA. 19+03.55 CUT-11 PLAN	
Scale: AS SHOWN Drawing no. 7	
SHEET 07 OF 07	