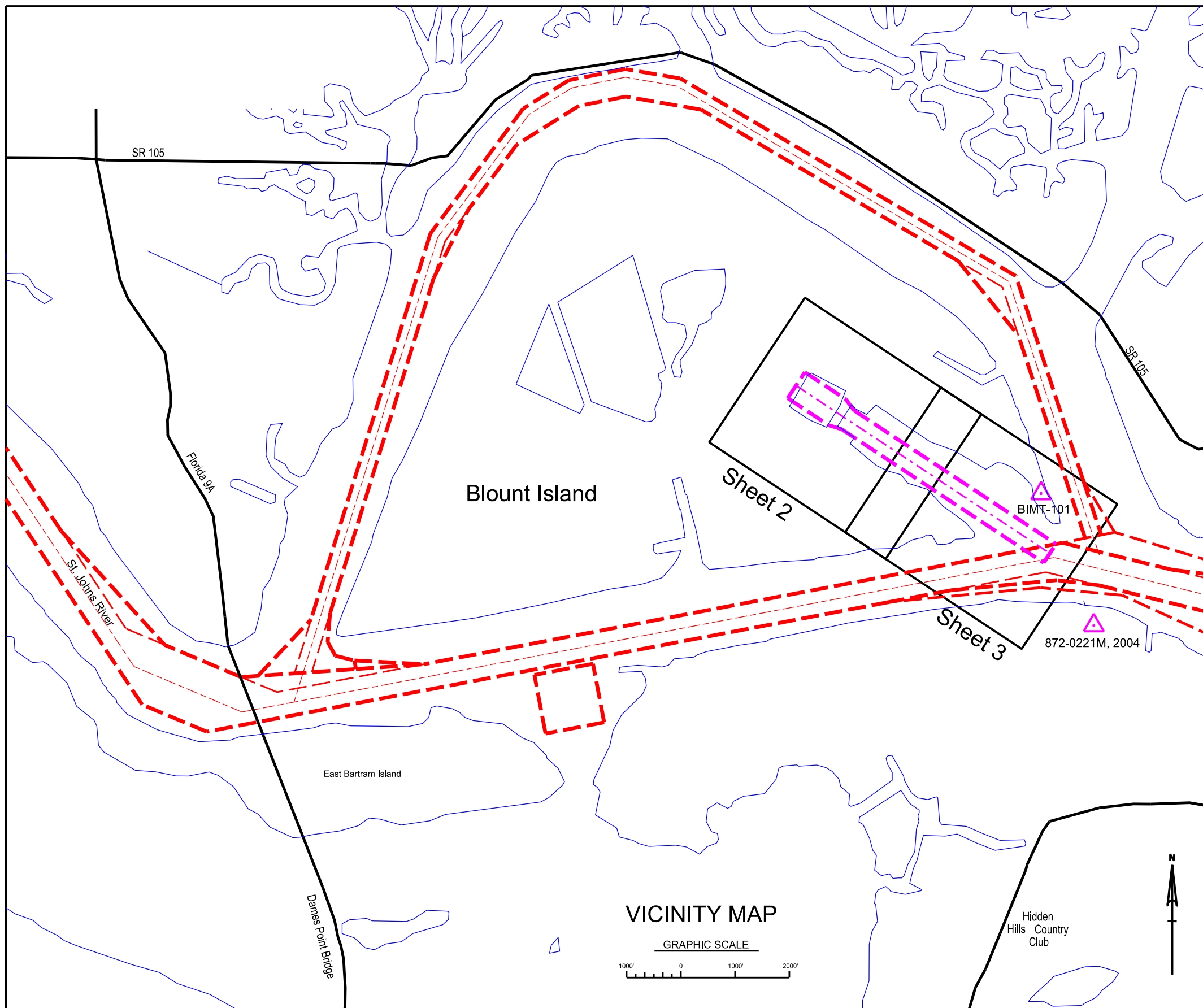
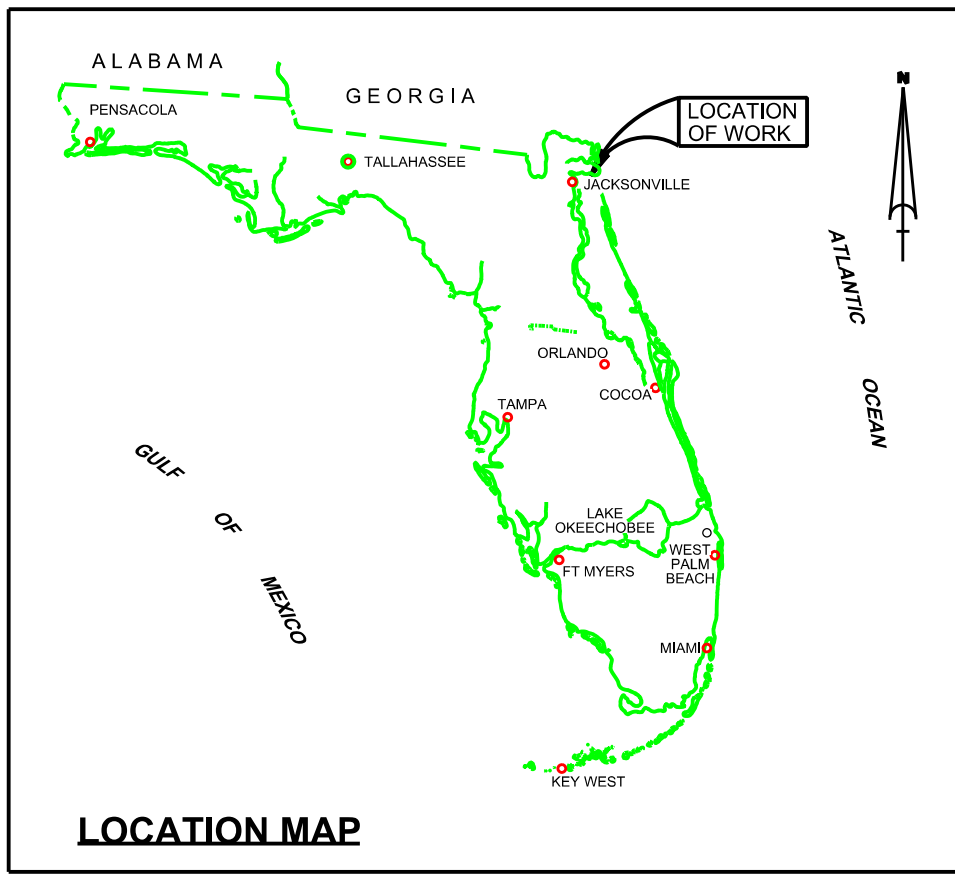


# U.S. MARINE CORPS - BLOUNT ISLAND COMMAND

## BLOUNT ISLAND MARINE TERMINAL

### 4TH QUARTER HYDROGRAPHIC EXAMINATION SURVEY

#### FY15



**SURVEY NOTES:**

- REFER TO SURVEY NO. 15-178.
- DEPTHS DEPICTED BY THIS SURVEY ARE REFERENCED TO MLLW, TIDAL EPOCH 1983-2001, AS REPORTED BY THE NATIONAL OCEANIC AND ATMOSPHERIC ADMINISTRATION (NOAA). NOAA'S VDATUM MODEL WAS USED AND CALIBRATED TO THE PUBLISHED MLLW HEIGHTS OF THE BENCHMARK ASSOCIATED WITH THE TIDE GAGE SITE SPECIFIED BELOW:  
  
NOAA TIDAL STATION "872-0221", FULTON, ST. JOHNS RIVER FOR ALL CUTS
- TIDAL REDUCTIONS WERE OBTAINED USING REAL-TIME KINEMATIC (RTK) GPS AND UTILIZING A HYPACK KINEMATIC TIDAL DATUM (KTD) MODEL, TITLED CAMDENGA-NASSAU-DUVAL-STJOHNS-FLAGLER\_01FEB2011.KTD.
- ALL ELEVATIONS ARE BELOW THE CHART DATUM UNLESS PRECEDED BY A (+) SIGN.
- PLANE COORDINATES ARE BASED ON THE TRANSVERSE MERCATOR PROJECTION FOR THE EAST ZONE OF FLORIDA AND REFERENCED TO THE NORTH AMERICAN DATUM OF 1983.
- ALL STATIONING REFERS TO THE CENTERLINE OF THE CHANNEL.
- THIS SURVEY WAS PERFORMED USING REAL-TIME KINEMATIC GPS POSITIONING WITH THE FOLLOWING REFERENCE BASE LOCATION:  
  
REFERENCE BASE LOCATED AT "BIMT-101" (OPUS PID: BBBX61)  
  
TIDE STAFF SET FROM "BIMT-101" (OPUS PID: BBBX61)
- VERTICAL MEASUREMENTS WERE MADE USING AN R2 SONIC 2024 MULTIBEAM SYSTEM AND A ROSS SMART SOUNDER DUAL FREQUENCY 28/200KHZ SINGLE-BEAM SOUNDER. DEPTHS OUTSIDE THE SECURITY GATE ARE SHOWN IN HIGH FREQUENCY (240 KHZ). DEPTHS INSIDE SECURITY GATE ARE SHOWN IN LOW FREQUENCY (28KHZ).

VESSEL	DATE OF SURVEY	AREA
SB-46	24-25 SEP 2015	STA 0+00 TO STA 57+00

- THE INFORMATION DEPICTED ON THESE MAPS REPRESENTS THE RESULTS OF SURVEYS MADE ON THE DATES INDICATED AND CAN ONLY BE CONSIDERED AS INDICATING THE GENERAL CONDITIONS EXISTING AT THAT TIME. THIS CHART IS NOT TO BE USED FOR NAVIGATION.
- SURVEY ACCURACY STANDARDS, QUALITY CONTROL, AND QUALITY ASSURANCE REQUIREMENTS WERE FOLLOWED DURING THIS SURVEY IN ACCORDANCE WITH USACE EM 1110-2-1003, HYDROGRAPHIC SURVEYING, 30 NOV 2013.

LEGEND	
	BENCHMARK
	LIGHTED BEACON
	GREEN DAYBEACON
	RED DAYBEACON
	RED LIGHTED BUOY
	GREEN LIGHTED BUOY
	CAN BUOY
	NUN BUOY
	TIDE STAFF
	PROJECT DEPTH

US Army Corps of Engineers  
Jacksonville District  
SAFETY ON THIS JOB  
DEPENDS ON YOU

---

DEPARTMENT OF THE ARMY  
JACKSONVILLE DISTRICT, CORPS OF ENGINEERS  
JACKSONVILLE, FLORIDA

---

BLOUNT ISLAND  
MARINE CORPS TERMINAL  
4TH QUARTER EXAM SURVEY FY15  
38 - FOOT PROJECT  
SLIPWAY AND BERTHING AREAS  
LOCATION AND VICINITY MAP

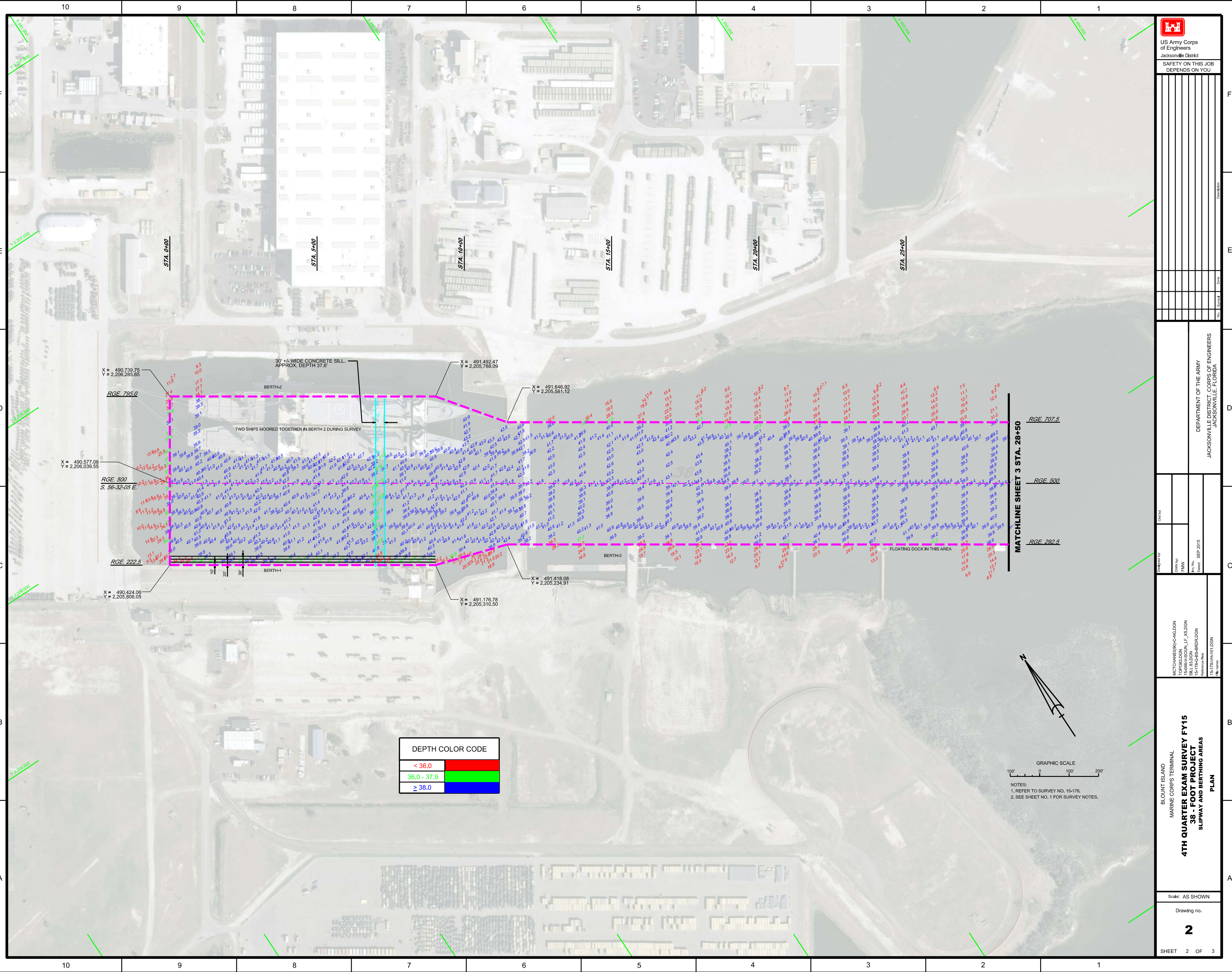
---

Scale: AS SHOWN

Drawing no.  
**1**

SHEET 1 OF 3





30' +/- WIDE CONCRETE SILL.  
APPROX. DEPTH 37.6'

BERTH-2

TWO SHIPS MOORED TOGETHER IN BERTH 2 DURING SURVEY

BERTH-1

BERTH-3

FLLOATING DOCK IN THIS AREA

STA. 0+00

STA. 5+00

STA. 10+00

STA. 15+00

STA. 20+00

STA. 25+00

RGE. 707.5

RGE. 500

RGE. 292.5

RGE. 222.5

S. 56-32-05 E

X = 490,739.75  
Y = 2,205,265.65

X = 491,492.47  
Y = 2,205,788.09

X = 491,646.92  
Y = 2,205,581.12

X = 490,577.08  
Y = 2,206,039.55

X = 490,424.08  
Y = 2,205,808.05

X = 491,176.78  
Y = 2,205,310.50

X = 491,418.08  
Y = 2,205,234.91

DEPTH COLOR CODE	
< 36.0	Red
36.0 - 37.9	Green
≥ 38.0	Blue

