

FERNANDINA HARBOR NASSAU COUNTY, FLORIDA EXAMINATION SURVEY FY15 35 & 36-FOOT PROJECT

SURVEY NOTES

- REFER TO SURVEY NO. 15-170.
 - DEPTHS DEPICTED BY THIS SURVEY ARE REFERENCED TO MLLW, TIDAL EPOCH 1983-2001 AS REPORTED BY THE NATIONAL OCEANIC AND ATMOSPHERIC ADMINISTRATION (NOAA). NOAA'S VDATUM MODEL WAS USED AND CALIBRATED TO THE PUBLISHED MLLW HEIGHTS OF THE BENCHMARKS ASSOCIATED WITH THE TIDE GAGE SITES SPECIFIED BELOW:

NOAA TIDAL STATION 872-0030, FERNANDINA BEACH, AMELIA RIVER, FL
 - TIDAL REDUCTIONS WERE OBTAINED UTILIZING A REAL-TIME KINEMATIC (RTK) GPS AND REFERENCED TO MLLW UTILIZING A HYPACK KINEMATIC TIDE DATUM (KTD) MODEL. KTD FILE NAME IS: "CAMDENGA-NASSAU-DUVAL-STJOHNS-FLAGLER-01FEB2011.KTD".
 - ALL ELEVATIONS ARE BELOW THE CHART DATUM UNLESS PRECEDED BY A (+) SIGN.
 - PLANE COORDINATES ARE BASED ON THE TRANSVERSE MERCATOR PROJECTION FOR THE EAST ZONE OF FLORIDA AND REFERENCED TO NORTH AMERICAN DATUM OF 1983 (NAD83).
 - ALL STATIONING REFERS TO THE CENTERLINE OF THE CHANNEL.
 - THIS SURVEY WAS PERFORMED USING REAL-TIME KINEMATIC (RTK) GPS POSITIONING WITH THE FOLLOWING REFERENCE BASE LOCATION:

REFERENCE BASE LOCATED AT "BATH HOUSE ARP" (OPUS PID: B8C808)
REFERENCE BASE LOCATED AT "RICHARD E BONNER" (OPUS PID: B8C839)

TIDE STAFF WAS SET NEAR FERNANDINA MUNICIPAL MARINA FROM "RICHARD E BONNER"
 - VERTICAL MEASUREMENTS WERE MADE USING AN R2SONIC MODEL 2024 MULTI-BEAM SYSTEM AND A ROSS SMARTSOUNDER MODEL 835C DUAL-FREQUENCY SOUNDER WITH A 28/200 KHZ SINGLE-BEAM TRANSDUCER. ALL SOUNDINGS SHOWN ARE IN HIGH FREQUENCY.
- | VESSEL | DATE OF SURVEY | AREA SURVEYED |
|--------|----------------|------------------|
| SB-46 | 19 AUG 2015 | CUT-10 |
| SB-46 | 20 AUG 2015 | CUT-1 THRU CUT-5 |
| SB-46 | 21 AUG 2015 | CUT-6 THRU CUT-9 |
- AIDS TO NAVIGATION WERE LOCATED DURING THIS SURVEY.
 - THE INFORMATION DEPICTED ON THIS MAP REPRESENTS THE RESULTS OF OF SURVEYS MADE ON THE DATES INDICATED ABOVE AND CAN ONLY BE CONSIDERED AS INDICATING THE GENERAL CONDITIONS AT THAT TIME. THIS CHART IS SOLELY FOR THE DISTRIBUTION OF AVAILABLE DEPTHS AT THE TIME OF THE SURVEY.
 - SURVEY ACCURACY PERFORMANCE STANDARDS, QUALITY CONTROL, AND QUALITY ASSURANCE REQUIREMENTS WERE FOLLOWED DURING THIS SURVEY IN ACCORDANCE WITH USACE EM 1110-2-1003, HYDROGRAPHIC SURVEYING, 30 NOV 13.

LEGEND	
	MONUMENT
	LIGHTED BEACON
	GREEN DAY BEACON
	RED DAY BEACON
	RED LIGHTED BUOY
	GREEN LIGHTED BUOY
	CAN BUOY
	NUN BUOY
	TIDE STAFF
	PROJECT DEPTH

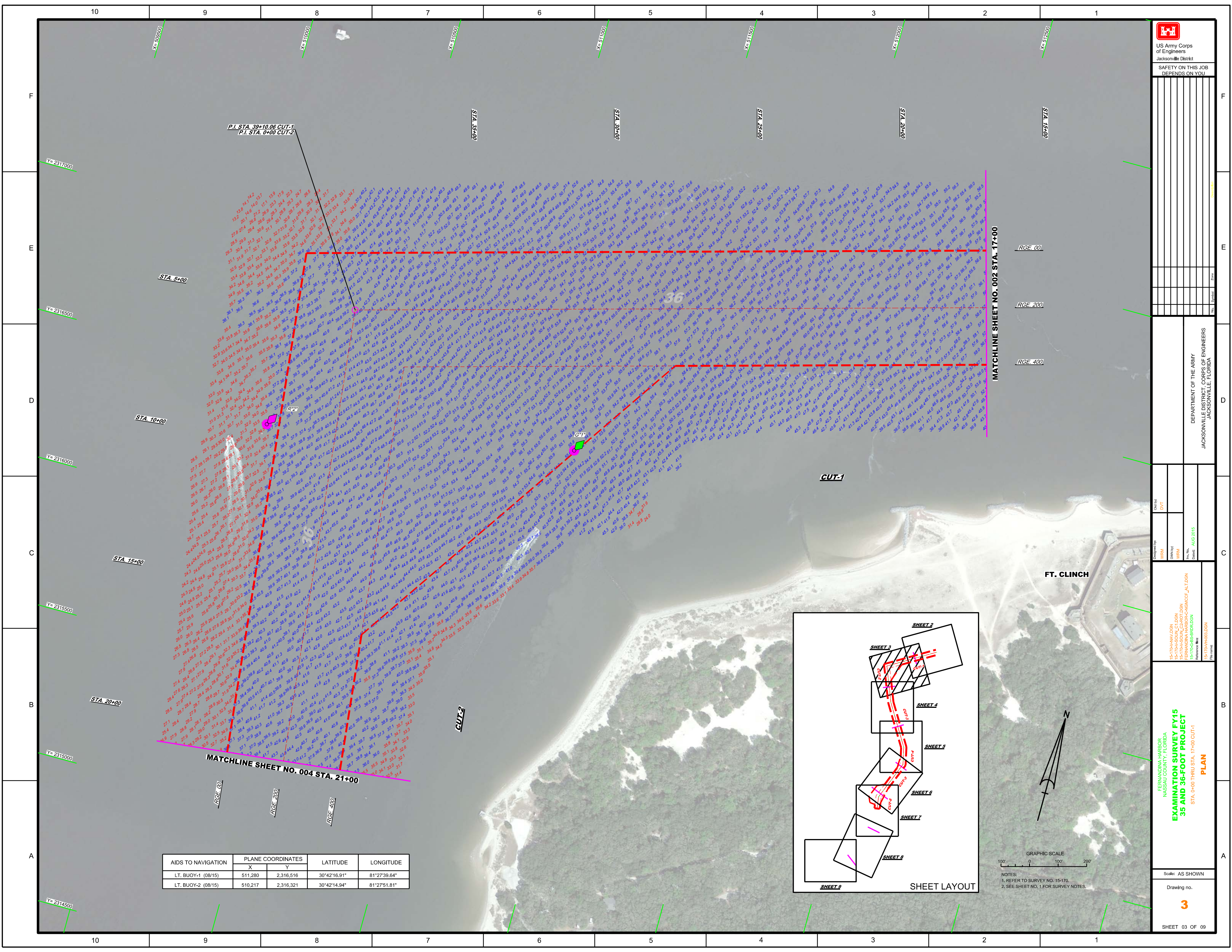
US Army Corps of Engineers
Jacksonville District
SAFETY ON THIS JOB DEPENDS ON YOU

Checked By: GR	Designed By: WRM	Drawn By: WRM	File No: 15-170-001	Date: AUG 2015
15-170-001.DGN	15-170-001.DGN	15-170-001.DGN	15-170-001.DGN	15-170-001.DGN

DEPARTMENT OF THE ARMY
JACKSONVILLE DISTRICT, CORPS OF ENGINEERS
JACKSONVILLE, FLORIDA

FERNANDINA HARBOR, FLORIDA
NASSAU COUNTY, FLORIDA
**EXAMINATION SURVEY FY15
35 AND 36-FOOT PROJECT**
INDEX, LOCATION AND VICINITY
MAP

Scale: AS SHOWN
Drawing no. **1**
SHEET 01 OF 09



P.I. STA. 39+10.06 CUT-1
P.I. STA. 0+00 CUT-2

STA. 5+00

STA. 10+00

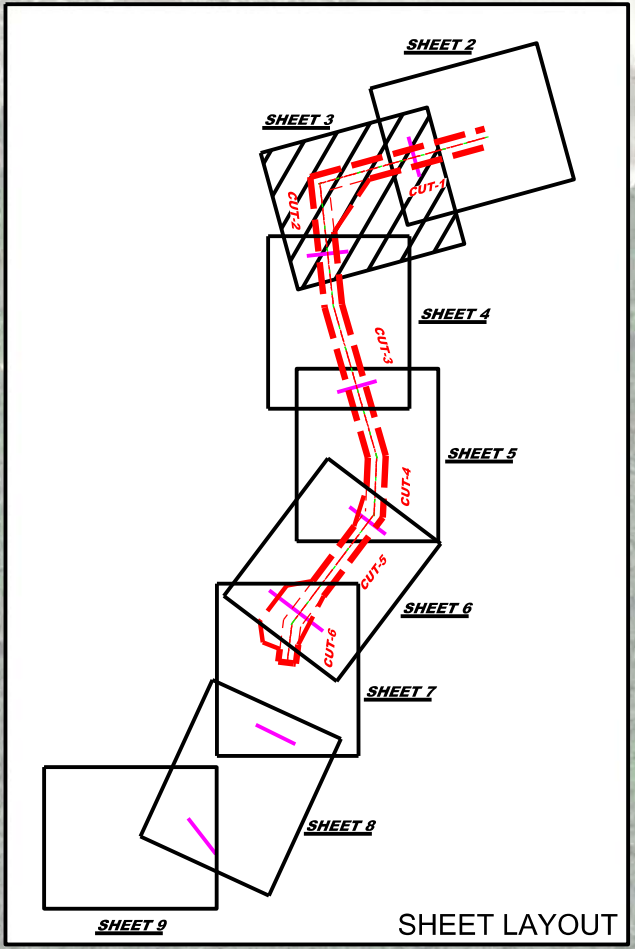
STA. 15+00

STA. 20+00

MATCHLINE SHEET NO. 004 STA. 21+00


MATCHLINE SHEET NO. 002 STA. 17+00

AIDS TO NAVIGATION	PLANE COORDINATES		LATITUDE	LONGITUDE
	X	Y		
LT. BUOY-1 (0815)	511,280	2,316,516	30°42'16.91"	81°27'39.64"
LT. BUOY-2 (0815)	510,217	2,316,321	30°42'14.94"	81°27'51.81"



GRAPHIC SCALE
100' 0 100' 200'

NOTES:
1. REFER TO SURVEY NO. 15-170.
2. SEE SHEET NO. 1 FOR SURVEY NOTES.



US Army Corps of Engineers
Jacksonville District
SAFETY ON THIS JOB
DEPENDS ON YOU

DEPARTMENT OF THE ARMY
JACKSONVILLE DISTRICT, CORPS OF ENGINEERS
JACKSONVILLE, FLORIDA

Drawn by: DVT
Checked by: WRM
Designed by: WRM
Scale: AS SHOWN

15-170A-ADDN
15-170A-SOIA_CUT-DON
15-170A-SOIA-CANONCUT_AUT-DON
15-170A-SOIA-BRIDGON
Reference: 15-170A-H01-DON
Date: AUG 2015

**EXAMINATION SURVEY FY15
35 AND 36-FOOT PROJECT**
STA. 0+00 THRU STA. 17+00 CUT-1
PLAN

Scale: AS SHOWN
Drawing no. **3**
SHEET 03 OF 09

AIDS TO NAVIGATION	PLANE COORDINATES		LATITUDE	LONGITUDE
	X	Y		
LT. BUOY-3 (08/15)	510,878	2,315,116	30°42'03.04"	81°27'44.18"
LT. BUOY-4 (08/15)	510,554	2,313,659	30°41'48.60"	81°27'47.82"
LT. BUOY-5 (08/15)	511,009	2,313,652	30°41'48.55"	81°27'42.60"

US Army Corps of Engineers
Jacksonville District

SAFETY ON THIS JOB
DEPENDS ON YOU

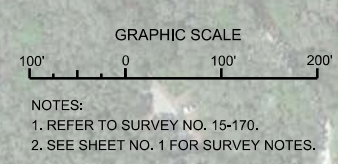
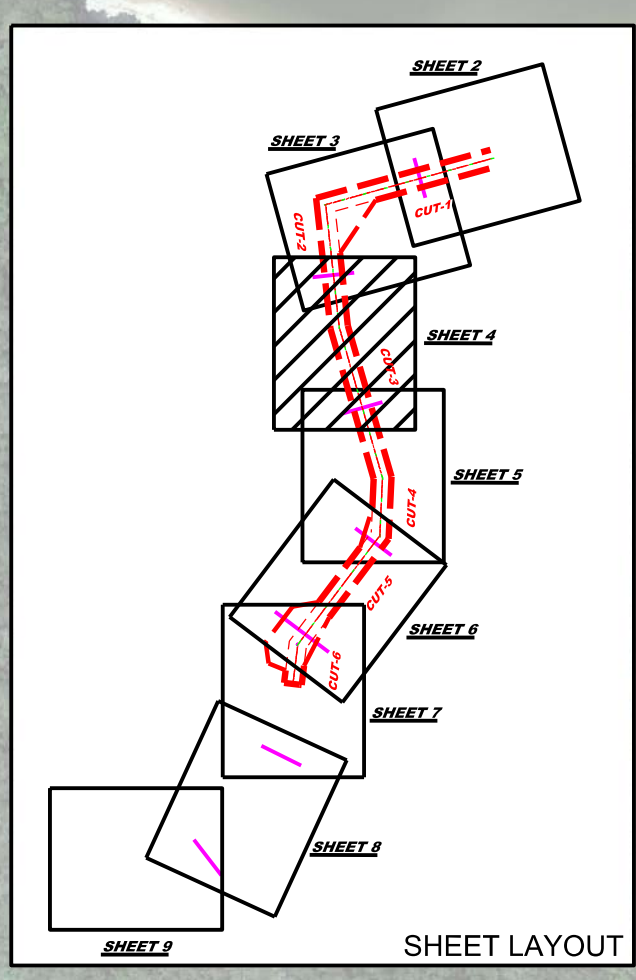
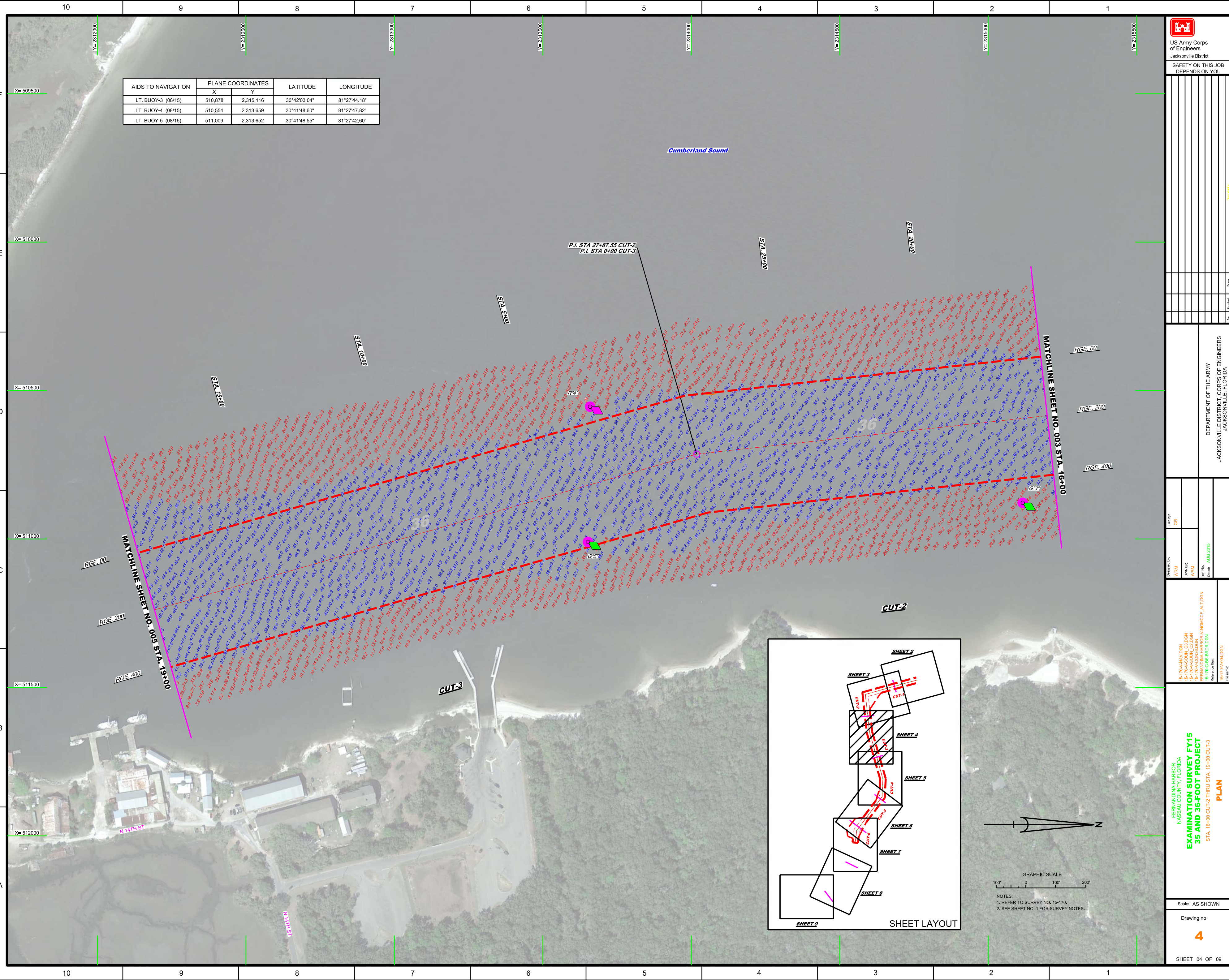
DEPARTMENT OF THE ARMY
JACKSONVILLE DISTRICT, CORPS OF ENGINEERS
JACKSONVILLE, FLORIDA

Checked By: GRL
Designed By: WRM
Drawn By: WRM
Reference: AUG 2015


15-170A-04L00N
15-170A-04L00N
15-170A-04L00N
15-170A-04L00N
15-170A-04L00N

BERNARDINA HARBOR
NASSAU COUNTY, FLORIDA
**EXAMINATION SURVEY FY15
35 AND 36-FOOT PROJECT**
STA. 16+00 CUT-2 THRU STA. 19+00 CUT-3
PLAN

Scale: AS SHOWN
Drawing no. **4**
SHEET 04 OF 09



AIDS TO NAVIGATION	PLANE COORDINATES		LATITUDE	LONGITUDE
	X	Y		
LT. BUOY-6 (08/15)	511,436	2,310,595	30°41'18.32"	81°27'37.57"
LT-7 (08/15)	511,972	2,310,645	30°41'18.84"	81°27'31.44"



US Army Corps of Engineers
Jacksonville District
SAFETY ON THIS JOB
DEPENDS ON YOU

DEPARTMENT OF THE ARMY
JACKSONVILLE DISTRICT, CORPS OF ENGINEERS
JACKSONVILLE, FLORIDA

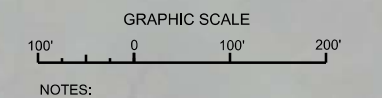
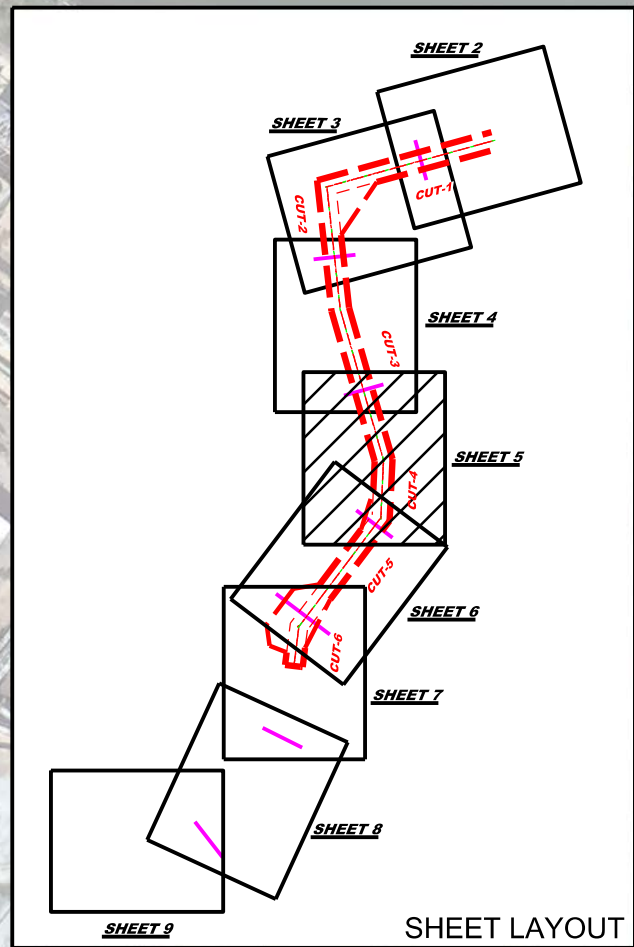
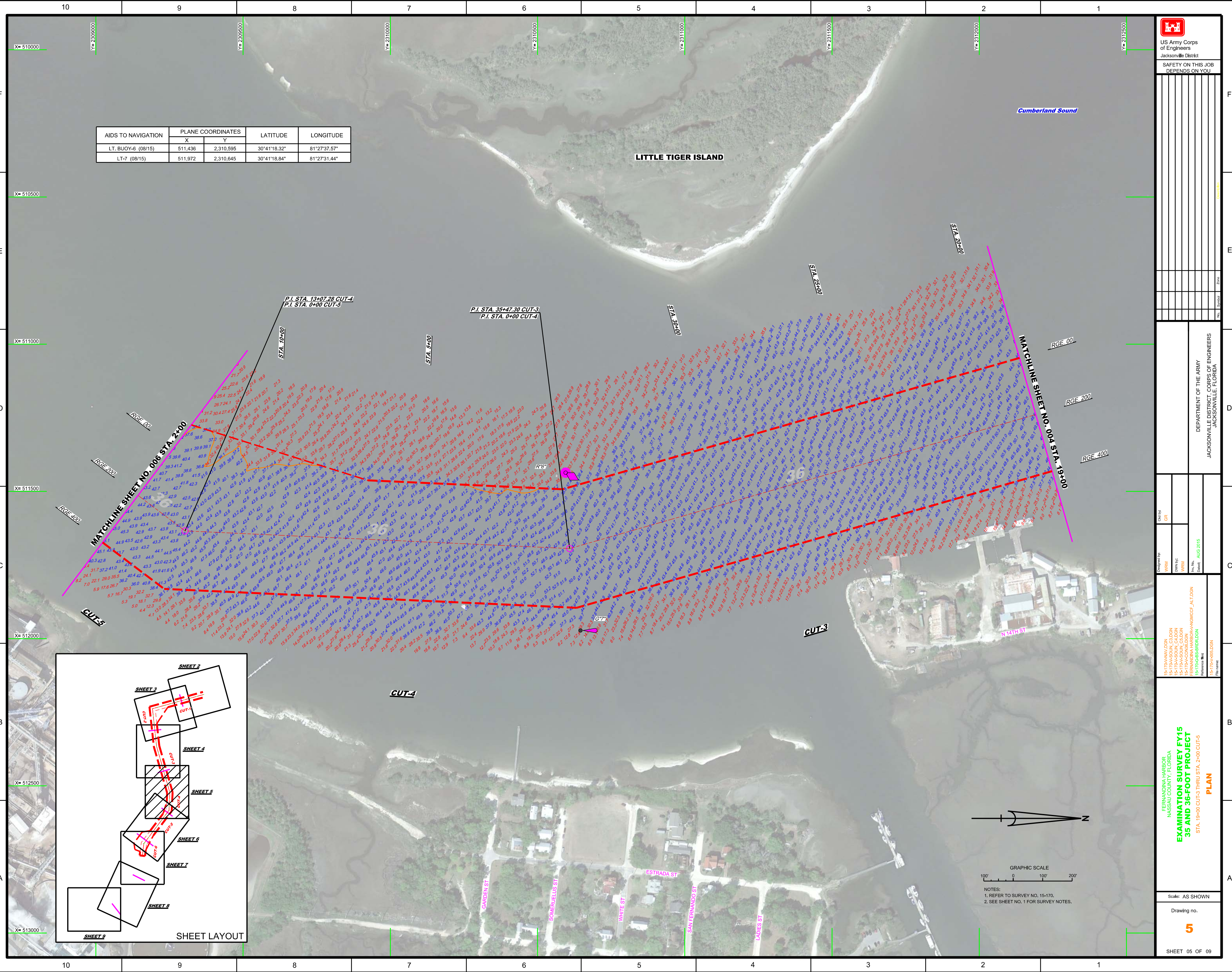
Checked By: GRL
Designed By: WRM
Drawn By: WRM
Scale: AUG 2015

15-170A-V-001
15-170A-S-001
15-170A-S-002
15-170A-S-003
15-170A-S-004
15-170A-S-005
15-170A-S-006
15-170A-S-007
15-170A-S-008
15-170A-S-009
15-170A-S-010
15-170A-S-011
15-170A-S-012
15-170A-S-013
15-170A-S-014
15-170A-S-015
15-170A-S-016
15-170A-S-017
15-170A-S-018
15-170A-S-019
15-170A-S-020
15-170A-S-021
15-170A-S-022
15-170A-S-023
15-170A-S-024
15-170A-S-025
15-170A-S-026
15-170A-S-027
15-170A-S-028
15-170A-S-029
15-170A-S-030
15-170A-S-031
15-170A-S-032
15-170A-S-033
15-170A-S-034
15-170A-S-035
15-170A-S-036
15-170A-S-037
15-170A-S-038
15-170A-S-039
15-170A-S-040
15-170A-S-041
15-170A-S-042
15-170A-S-043
15-170A-S-044
15-170A-S-045
15-170A-S-046
15-170A-S-047
15-170A-S-048
15-170A-S-049
15-170A-S-050
15-170A-S-051
15-170A-S-052
15-170A-S-053
15-170A-S-054
15-170A-S-055
15-170A-S-056
15-170A-S-057
15-170A-S-058
15-170A-S-059
15-170A-S-060
15-170A-S-061
15-170A-S-062
15-170A-S-063
15-170A-S-064
15-170A-S-065
15-170A-S-066
15-170A-S-067
15-170A-S-068
15-170A-S-069
15-170A-S-070
15-170A-S-071
15-170A-S-072
15-170A-S-073
15-170A-S-074
15-170A-S-075
15-170A-S-076
15-170A-S-077
15-170A-S-078
15-170A-S-079
15-170A-S-080
15-170A-S-081
15-170A-S-082
15-170A-S-083
15-170A-S-084
15-170A-S-085
15-170A-S-086
15-170A-S-087
15-170A-S-088
15-170A-S-089
15-170A-S-090
15-170A-S-091
15-170A-S-092
15-170A-S-093
15-170A-S-094
15-170A-S-095
15-170A-S-096
15-170A-S-097
15-170A-S-098
15-170A-S-099
15-170A-S-100

FERNANDINA HARBOR
NASSAU COUNTY, FLORIDA
**EXAMINATION SURVEY FY15
35 AND 36-FOOT PROJECT**
STA. 19+00 CUT-3 THRU STA. 2+00 CUT-5
PLAN

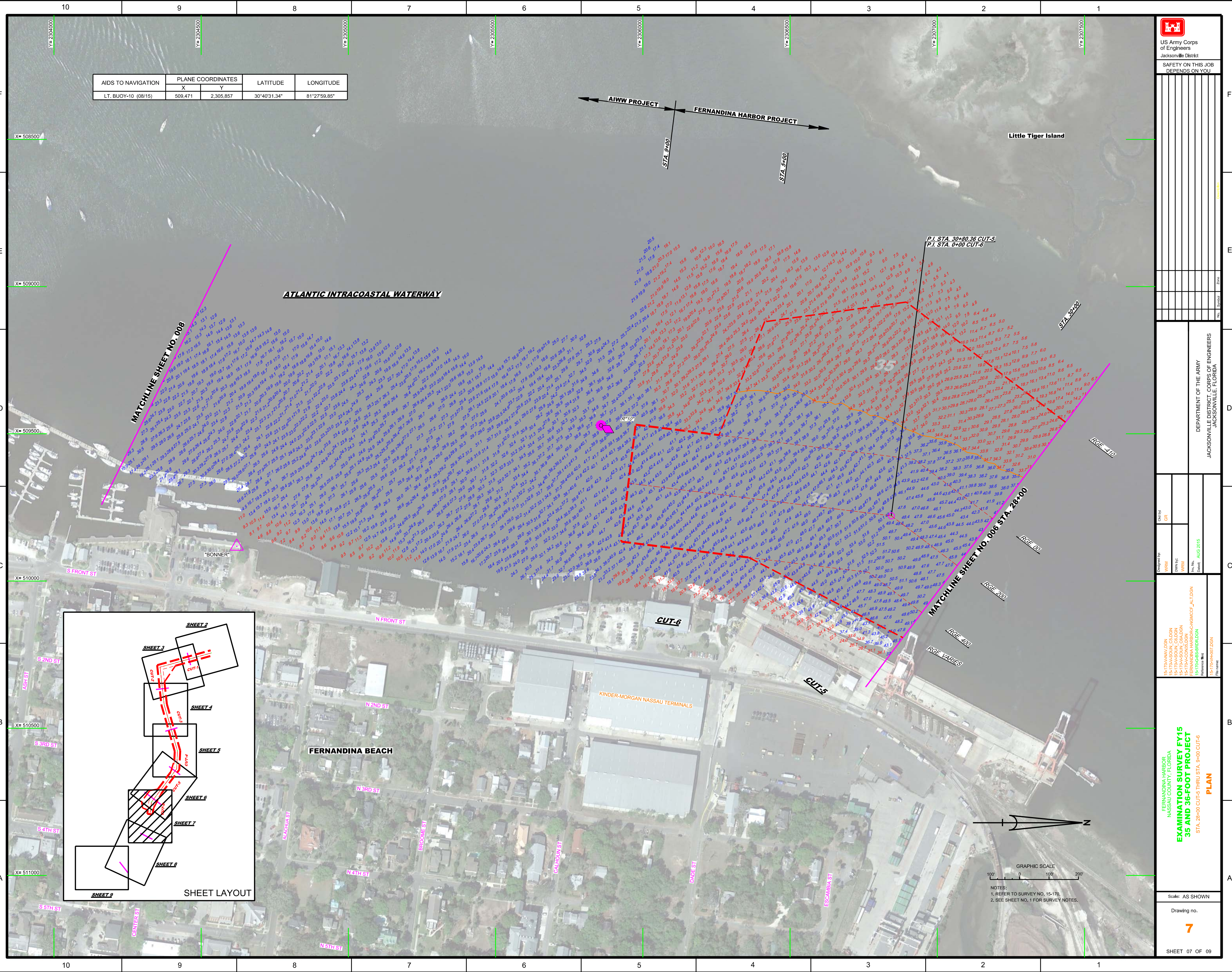
Scale: AS SHOWN
Drawing no.
5

SHEET 05 OF 09



NOTES:
1. REFER TO SURVEY NO. 15-170.
2. SEE SHEET NO. 1 FOR SURVEY NOTES.

AIDS TO NAVIGATION	PLANE COORDINATES		LATITUDE	LONGITUDE
	X	Y		
LT. BUOY-10 (08/15)	509,471	2,305,857	30°40'31.34"	81°27'59.85"

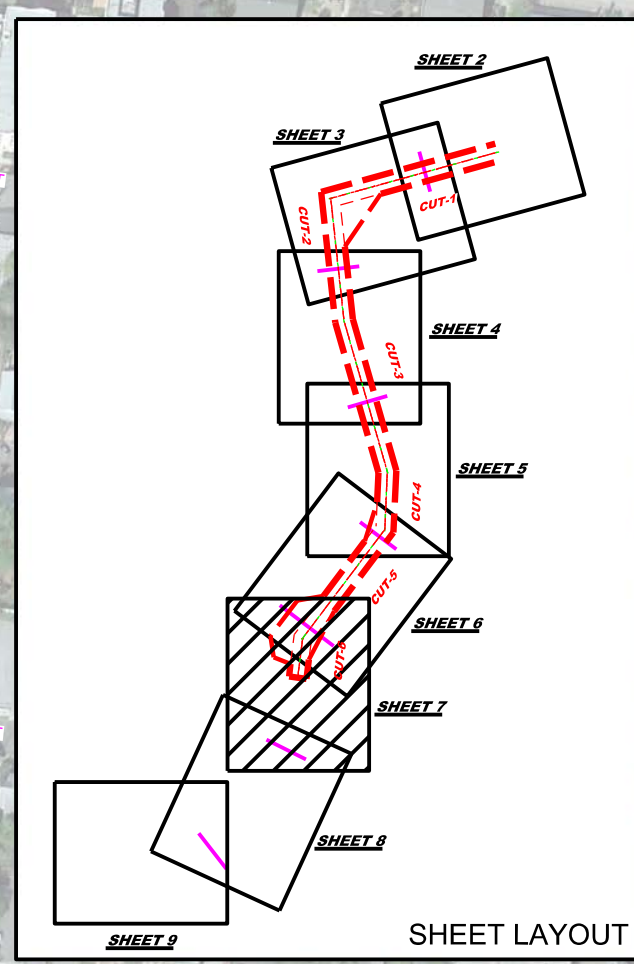


MATCHLINE SHEET NO. 008

ATLANTIC INTRACOASTAL WATERWAY

AIWW PROJECT
FERNANDINA HARBOR PROJECT

P.I. STA. 30+80.36 CUT-5
P.I. STA. 0+00 CUT-6



NOTES:
1. REFER TO SURVEY NO. 15-170.
2. SEE SHEET NO. 1 FOR SURVEY NOTES.

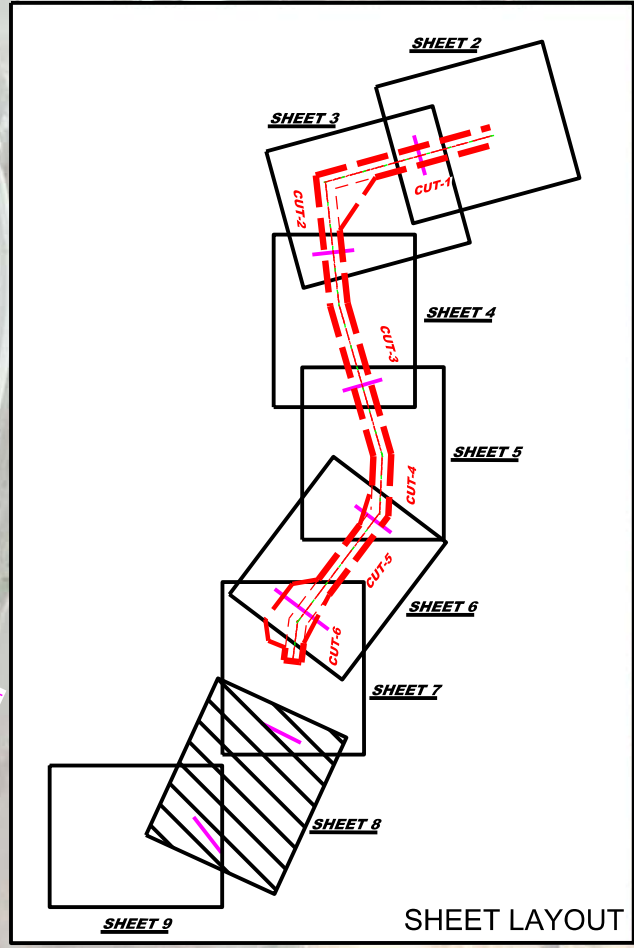
AIDS TO NAVIGATION	PLANE COORDINATES		LATITUDE	LONGITUDE
	X	Y		
LT-12 (08/15)	508,900	2,303,947	30°40'12.41"	81°28'06.30"
LT-14 (08/15)	507,689	2,302,515	30°39'58.19"	81°28'20.10"

ATLANTIC INTRACOASTAL WATERWAY

MATCHLINE SHEET NO. 009

MATCHLINE SHEET NO. 007

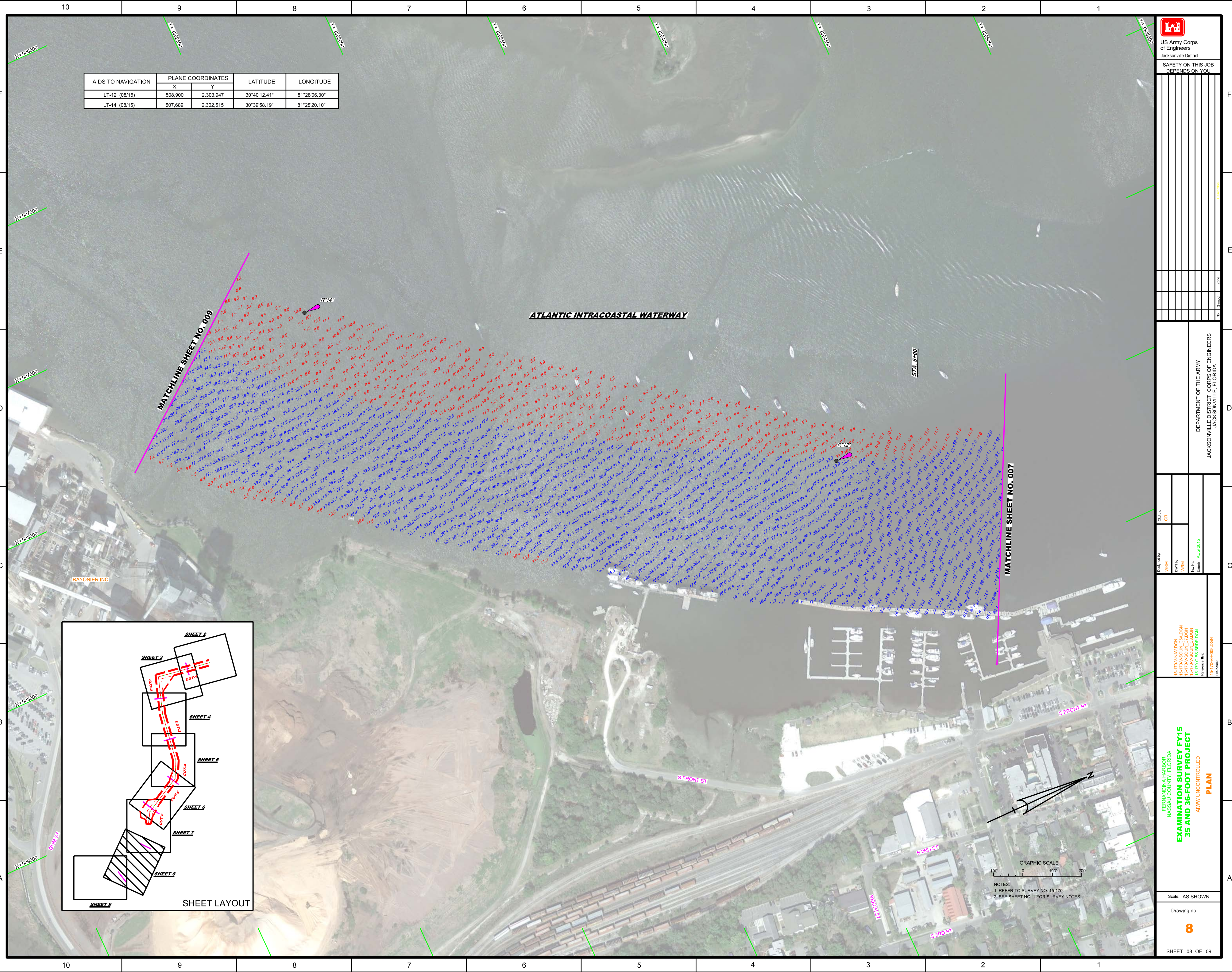
STA. 5+40



SHEET LAYOUT



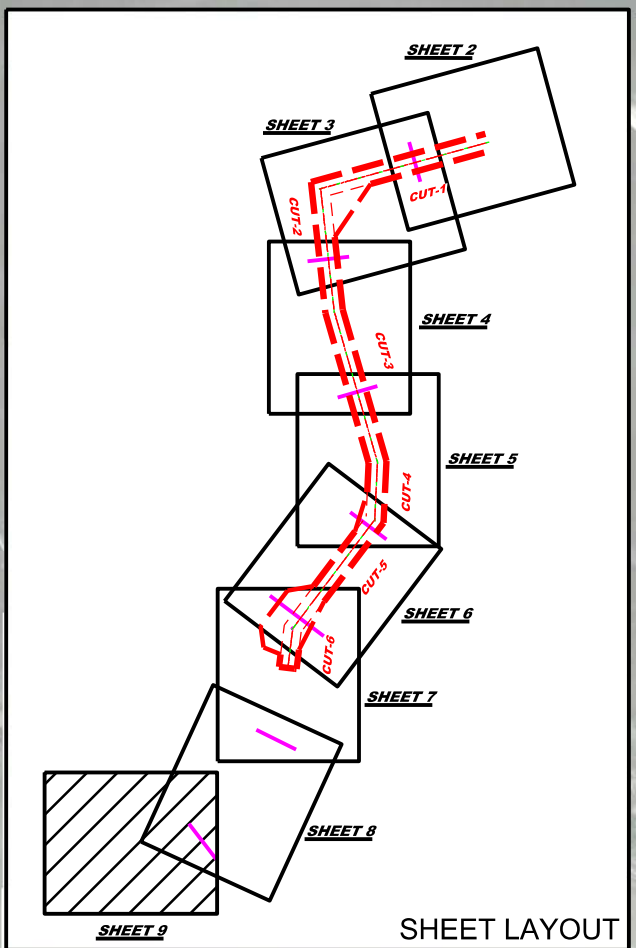
NOTES:
1. REFER TO SURVEY NO. 15-170.
2. SEE SHEET NO. 1 FOR SURVEY NOTES.



AIDS TO NAVIGATION	PLANE COORDINATES		LATITUDE	LONGITUDE
	X	Y		
DBN-16 (08/15)	506.115	2.301.817	30°39'51.21"	81°28'38.09"

ATLANTIC INTRACOASTAL WATERWAY

MATCHLINE SHEET NO. 008



RAYONER INC



NOTES:
1. REFER TO SURVEY NO. 15-170.
2. SEE SHEET NO. 1 FOR SURVEY NOTES.

DESIGNED BY: WRM
CHECKED BY: GRL
DATE: AUG 2015

15-170A-AVDON
15-170A-SOIL_CALDON
15-170A-SOIL_CALDON
15-170A-SB-BIRDSON

FLORIDA HARBOR
NASSAU COUNTY, FLORIDA
**EXAMINATION SURVEY FY15
35 AND 36-FOOT PROJECT**
AWW UNCONTROLLED
PLAN

Scale: AS SHOWN
Drawing no. **9**
SHEET 09 OF 09

DEPARTMENT OF THE ARMY
JACKSONVILLE DISTRICT, CORPS OF ENGINEERS
JACKSONVILLE, FLORIDA