

CHARLOTTE HARBOR - BOCA GRANDE PASS CHARLOTTE AND LEE COUNTIES, FLORIDA EXAMINATION SURVEY FY15 32-FOOT PROJECT

SURVEY NOTES

1. REFER TO SURVEY NO. 15-164.
2. DEPTHS DEPICTED BY THIS SURVEY ARE REFERENCED TO MEAN LOWER LOW WATER (MLLW), TIDAL EPOCH 1983-2001, AS REPORTED BY THE NATIONAL OCEANIC AND ATMOSPHERIC ADMINISTRATION (NOAA). NOAA'S VDATUM MODEL WAS USED AND CALIBRATED TO THE PUBLISHED MLLW HEIGHTS OF THE BENCHMARKS ASSOCIATED WITH THE TIDE GAGE SITE SPECIFIED BELOW:
NOAA TIDAL STATION 8725541, BOKELLA, CHARLOTTE HARBOR, FL
3. TIDAL REDUCTIONS WERE OBTAINED UTILIZING A REAL-TIME KINEMATIC (RTK) GPS AND REFERENCED TO MLLW UTILIZING A HYPACK KINEMATIC TIDE DATUM (KTD) MODEL. KTD FILE NAME IS: "SPC-FL-WEST-2010-12-07.KTD".
4. ALL ELEVATIONS ARE BELOW THE CHART DATUM UNLESS PRECEDED BY A (+) SIGN.
5. PLANE COORDINATES ARE BASED ON THE TRANSVERSE MERCATOR PROJECTION FOR THE WEST ZONE OF FLORIDA AND REFERENCED TO NORTH AMERICAN DATUM OF 1983 (NAD83).
6. ALL STATIONING REFERS TO THE CENTERLINE OF THE CHANNEL.
7. THIS SURVEY WAS PERFORMED USING REAL-TIME KINEMATIC (RTK) GPS POSITIONING WITH THE FOLLOWING REFERENCE BASE LOCATION:
REFERENCE BASE LOCATED AT "PC-102" (OPUS PID: BBCF70)
TIDE STAFF SET ON DOCK ON BOKELLA ISLAND FROM NOS TIDAL 872-5541 A
8. VERTICAL MEASUREMENTS WERE MADE A ROSS MODEL 835 SMARTSOUNDER OPERATING AT 28/200 KHZ. ALL SOUNDINGS SHOWN ARE IN HIGH FREQUENCY.
9. AIDS TO NAVIGATION WERE LOCATED DURING THIS SURVEY.
10. THE INFORMATION DEPICTED ON THIS MAP REPRESENTS THE RESULTS OF SURVEYS MADE ON THE DATES INDICATED ABOVE AND CAN ONLY BE CONSIDERED AS INDICATING THE GENERAL CONDITIONS AT THAT TIME. THIS CHART IS SOLELY FOR THE DISTRIBUTION OF AVAILABLE DEPTHS AT THE TIME OF THE SURVEY.
11. SURVEY ACCURACY PERFORMANCE STANDARDS, QUALITY CONTROL, AND QUALITY ASSURANCE REQUIREMENTS WERE FOLLOWED DURING THIS SURVEY IN ACCORDANCE WITH USACE EM 1110-2-1003, HYDROGRAPHIC SURVEYING, 30 NOV 13.

| LEGEND | |
|--------|--------------------|
| | MONUMENT |
| | LIGHTED BEACON |
| | GREEN DAYBEACON |
| | RED DAYBEACON |
| | RED LIGHTED BUOY |
| | GREEN LIGHTED BUOY |
| | CAN BUOY |
| | NUN BUOY |
| | TIDE STAFF |
| 8 | PROJECT DEPTH |

US Army Corps of Engineers
Jacksonville District

SAFETY ON THIS JOB
DEPENDS ON YOU

DESIGNED BY: WRM
DRAWN BY: WRM
FILE NO.: 15-164-BOCA-SPACCF.DGN
DATE: JAN 2016

Checked by: GHR

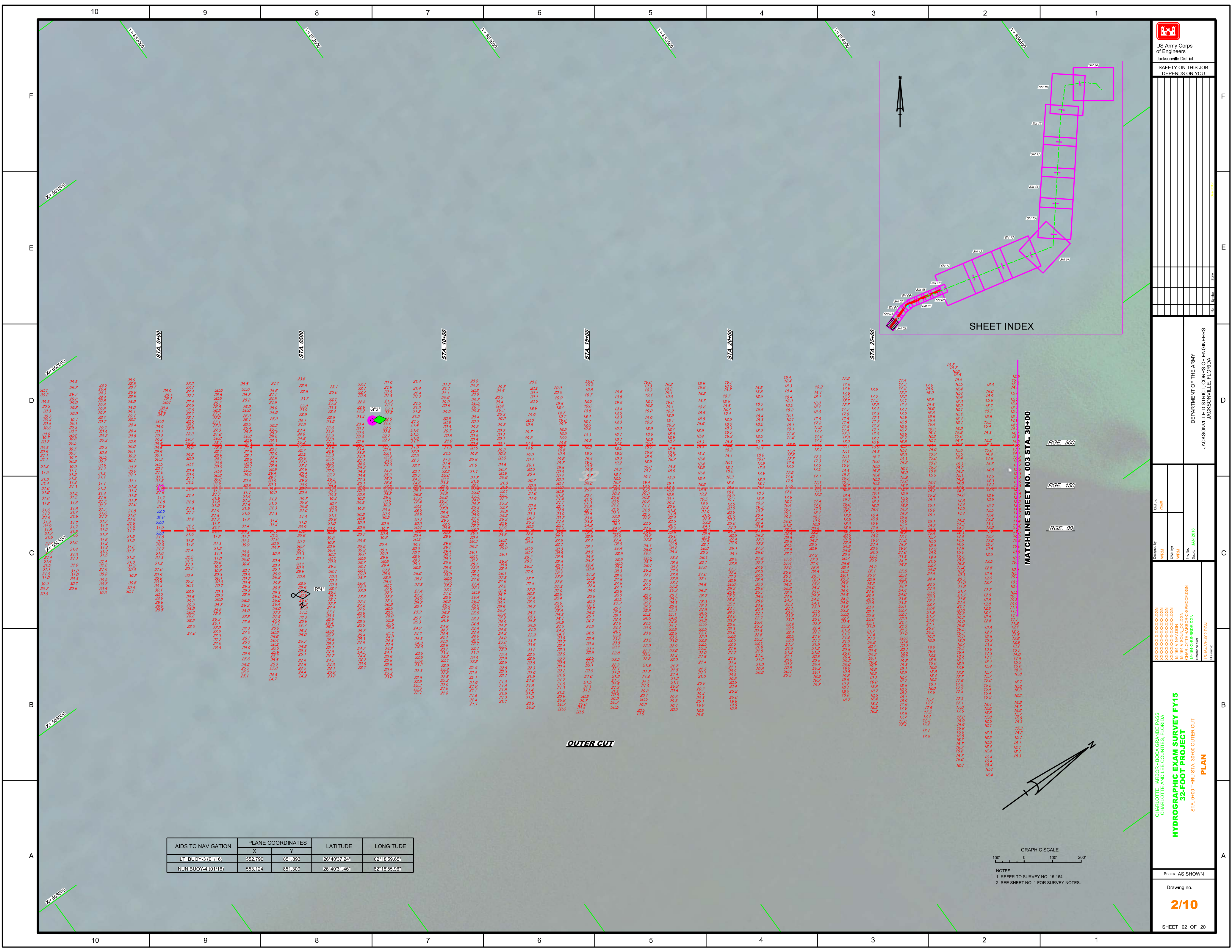
DEPARTMENT OF THE ARMY
JACKSONVILLE DISTRICT, CORPS OF ENGINEERS
JACKSONVILLE, FLORIDA

CHARLOTTE HARBOR - BOCA GRANDE PASS
CHARLOTTE AND LEE COUNTIES, FLORIDA
**HYDROGRAPHIC EXAM SURVEY FY15
32-FOOT PROJECT**
INDEX, LOCATION AND VICINITY
MAP

Scale: AS SHOWN

Drawing no.
1/10

SHEET 01 OF 20



10 9 8 7 6 5 4 3 2 1

F

E

D

C

B

A

Ys 853000

Ys 853500

Ys 854000

Ys 854500

Ys 855000

Ys 855500

Ys 856000

Ys 856500

Ys 857000

Ys 857500

Ys 858000

Ys 858500

Ys 859000

Ys 859500

Ys 860000

Ys 860500

Ys 861000

Ys 861500

Ys 862000

Ys 862500

Ys 863000

Ys 863500

Ys 864000

Ys 864500

Ys 865000

Ys 865500

Ys 866000

Ys 866500

Ys 867000

Ys 867500

Ys 868000

Ys 868500

Ys 869000

Ys 869500

Ys 870000

Ys 870500

Ys 871000

Ys 871500

Ys 872000

Ys 872500

Ys 873000

Ys 873500

Ys 874000

Ys 874500

Ys 875000

Ys 875500

Ys 876000

Ys 876500

Ys 877000

Ys 877500

Ys 878000

Ys 878500

Ys 879000

Ys 879500

Ys 880000

Ys 880500

Ys 881000

Ys 881500

Ys 882000

Ys 882500

Ys 883000

Ys 883500

Ys 884000

Ys 884500

Ys 885000

Ys 885500

Ys 886000

Ys 886500

Ys 887000

Ys 887500

Ys 888000

Ys 888500

Ys 889000

Ys 889500

Ys 890000

Ys 890500

Ys 891000

Ys 891500

Ys 892000

Ys 892500

Ys 893000

Ys 893500

Ys 894000

Ys 894500

Ys 895000

Ys 895500

Ys 896000

Ys 896500

Ys 897000

Ys 897500

Ys 898000

Ys 898500

Ys 899000

Ys 899500

Ys 900000

Ys 900500

Ys 901000

Ys 901500

Ys 902000

Ys 902500

Ys 903000

Ys 903500

Ys 904000

Ys 904500

Ys 905000

Ys 905500

Ys 906000

Ys 906500

Ys 907000

Ys 907500

Ys 908000

Ys 908500

Ys 909000

Ys 909500

Ys 910000

Ys 910500

Ys 911000

Ys 911500

Ys 912000

Ys 912500

Ys 913000

Ys 913500

Ys 914000

Ys 914500

Ys 915000

Ys 915500

Ys 916000

Ys 916500

Ys 917000

Ys 917500

Ys 918000

Ys 918500

Ys 919000

Ys 919500

Ys 920000

Ys 920500

Ys 921000

Ys 921500

Ys 922000

Ys 922500

Ys 923000

Ys 923500

Ys 924000

Ys 924500

Ys 925000

Ys 925500

Ys 926000

Ys 926500

Ys 927000

Ys 927500

Ys 928000

Ys 928500

Ys 929000

Ys 929500

Ys 930000

Ys 930500

Ys 931000

Ys 931500

Ys 932000

Ys 932500

Ys 933000

Ys 933500

Ys 934000

Ys 934500

Ys 935000

Ys 935500

Ys 936000

Ys 936500

Ys 937000

Ys 937500

Ys 938000

Ys 938500

Ys 939000

Ys 939500

Ys 940000

Ys 940500

Ys 941000

Ys 941500

Ys 942000

Ys 942500

Ys 943000

Ys 943500

Ys 944000

Ys 944500

Ys 945000

Ys 945500

Ys 946000

Ys 946500

Ys 947000

Ys 947500

Ys 948000

Ys 948500

Ys 949000

Ys 949500

Ys 950000

Ys 950500

Ys 951000

Ys 951500

Ys 952000

Ys 952500

Ys 953000

Ys 953500

Ys 954000

Ys 954500

Ys 955000

Ys 955500

Ys 956000

Ys 956500

Ys 957000

Ys 957500

Ys 958000

Ys 958500

Ys 959000

Ys 959500

Ys 960000

Ys 960500

Ys 961000

Ys 961500

Ys 962000

Ys 962500

Ys 963000

Ys 963500

Ys 964000

Ys 964500

Ys 965000

Ys 965500

Ys 966000

Ys 966500

Ys 967000

Ys 967500

Ys 968000

Ys 968500

Ys 969000

Ys 969500

Ys 970000

Ys 970500

Ys 971000

Ys 971500

Ys 972000

Ys 972500

Ys 973000

Ys 973500

Ys 974000

Ys 974500

Ys 975000

Ys 975500

Ys 976000

Ys 976500

Ys 977000

Ys 977500

Ys 978000

Ys 978500

Ys 979000

Ys 979500

Ys 980000

Ys 980500

Ys 981000

Ys 981500

Ys 982000

Ys 982500

Ys 983000

Ys 983500

Ys 984000

Ys 984500

Ys 985000

Ys 985500

Ys 986000

Ys 986500

Ys 987000

Ys 987500

Ys 988000

Ys 988500

Ys 989000

Ys 989500

Ys 990000

Ys 990500

Ys 991000

Ys 991500

Ys 992000

Ys 992500

Ys 993000

Ys 993500

Ys 994000

Ys 994500

Ys 995000

Ys 995500

Ys 996000

Ys 996500

Ys 997000

Ys 997500

Ys 998000

Ys 998500

Ys 999000

Ys 999500

Ys 1000000

US Army Corps of Engineers
Jacksonville District

SAFETY ON THIS JOB
DEPENDS ON YOU

DESIGNED BY: WMH, GHR
CHECKED BY: WMH, GHR
DATE: JAN 2018

CHARLOTTE HARBOR - BOCA GRANDE PASS
CHARLOTTE AND LEE COUNTIES, FLORIDA
HYDROGRAPHIC EXAM SURVEY FY15
32-FOOT PROJECT
STA. 0+00 THRU STA. 30+00 OUTER CUT
PLAN

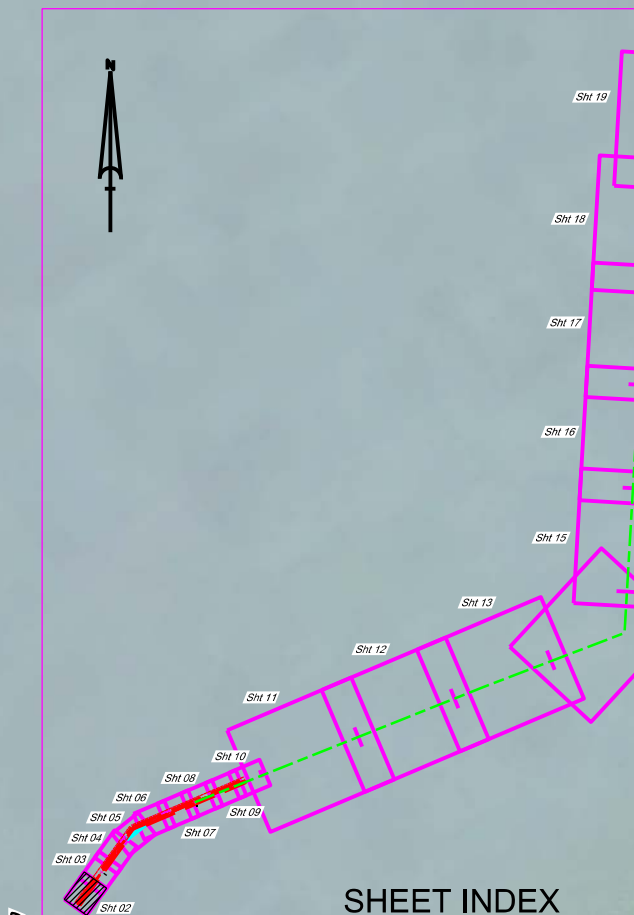
Scale: AS SHOWN

Drawing no. 2/10

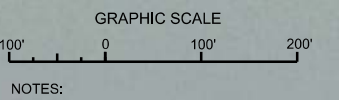
SHEET 02 OF 20

DEPARTMENT OF THE ARMY
JACKSONVILLE DISTRICT, CORPS OF ENGINEERS
JACKSONVILLE, FLORIDA

Reference files:
15-164-H-R02.DGN
15-164-GS-R10.DGN
15-164-GS-R11.DGN
15-164-GS-R12.DGN
15-164-GS-R13.DGN
15-164-GS-R14.DGN
15-164-GS-R15.DGN
15-164-GS-R16.DGN
15-164-GS-R17.DGN
15-164-GS-R18.DGN
15-164-GS-R19.DGN
15-164-GS-R20.DGN
15-164-GS-R21.DGN
15-164-GS-R22.DGN
15-164-GS-R23.DGN
15-164-GS-R24.DGN
15-164-GS-R25.DGN
15-164-GS-R26.DGN
15-164-GS-R27.DGN
15-164-GS-R28.DGN
15-164-GS-R29.DGN
15-164-GS-R30.DGN
15-164-GS-R31.DGN
15-164-GS-R32.DGN
15-164-GS-R33.DGN
15-164-GS-R34.DGN
15-164-GS-R35.DGN
15-164-GS-R36.DGN
15-164-GS-R37.DGN
15-164-GS-R38.DGN
15-164-GS-R39.DGN
15-164-GS-R40.DGN
15-164-GS-R41.DGN
15-164-GS-R42.DGN
15-164-GS-R43.DGN
15-164-GS-R44.DGN
15-164-GS-R45.DGN
15-164-GS-R46.DGN
15-164-GS-R47.DGN
15-164-GS-R48.DGN
15-164-GS-R49.DGN
15-164-GS-R50.DGN
15-164-GS-R51.DGN
15-164-GS-R52.DGN
15-164-GS-R53.DGN
15-164-GS-R54.DGN
15-164-GS-R55.DGN
15-164-GS-R56.DGN
15-164-GS-R57.DGN
15-164-GS-R58.DGN
15-164-GS-R59.DGN
15-164-GS-R60.DGN
15-164-GS-R61.DGN
15-164-GS-R62.DGN
15-164-GS-R63.DGN
15-164-GS-R64.DGN
15-164-GS-R65.DGN
15-164-GS-R66.DGN
15-164-GS-R67.DGN
15-164-GS-R68.DGN
15-164-GS-R69.DGN
15-164-GS-R70.DGN
15-164-GS-R71.DGN
15-164-GS-R72.DGN
15-164-GS-R73.DGN
15-164-GS-R74.DGN
15-164-GS-R75.DGN
15-164-GS-R76.DGN
15-164-GS-R77.DGN
15-164-GS-R78.DGN
15-164-GS-R79.DGN
15-164-GS-R80.DGN
15-164-GS-R81.DGN
15-164-GS-R82.DGN
15-164-GS-R83.DGN
15-164-GS-R84.DGN
15-164-GS-R85.DGN
15-164-GS-R86.DGN
15-164-GS-R87.DGN
15-164-GS-R88.DGN
15-164-GS-R89.DGN
15-164-GS-R90.DGN
15-164-GS-R91.DGN
15-164-GS-R92.DGN
15-164-GS-R93.DGN
15-164-GS-R94.DGN
15-164-GS-R95.DGN
15-164-GS-R96.DGN
15-164-GS-R97.DGN
15-164-GS-R98.DGN
15-164-GS-R99.DGN
15-164-GS-R100.DGN

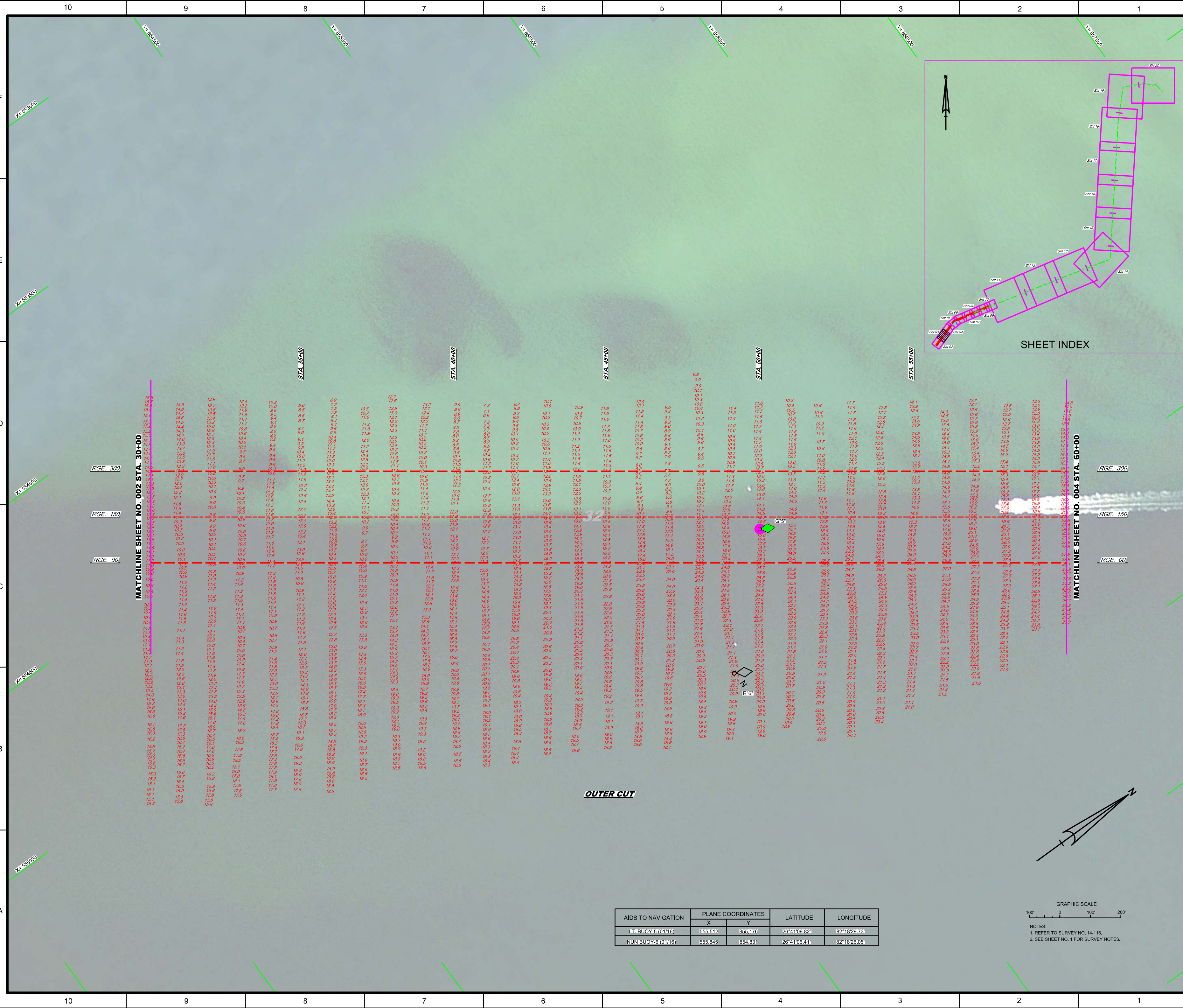
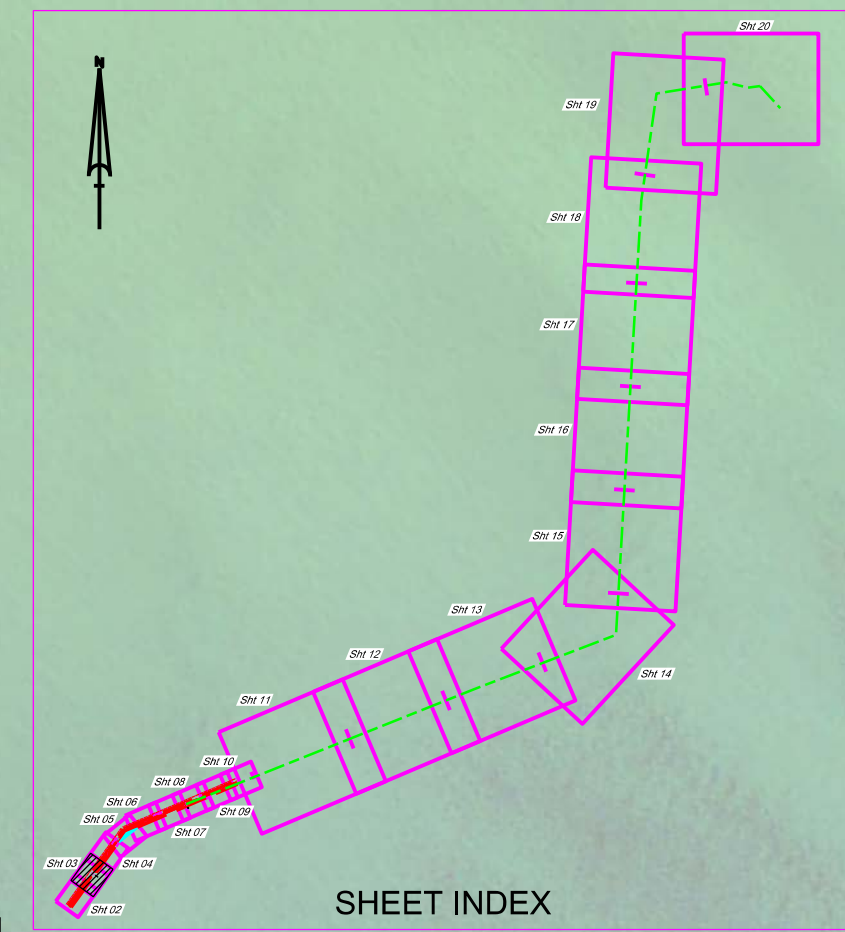


| AIDS TO NAVIGATION | PLANE COORDINATES | | LATITUDE | LONGITUDE |
|--------------------|-------------------|---------|--------------|--------------|
| | X | Y | | |
| LT BUOY-3 (01/16) | 552,790 | 851,893 | 28°40'37.24" | 82°18'55.65" |
| NUN BUOY-4 (01/16) | 553,124 | 851,309 | 28°40'31.46" | 82°18'55.96" |



NOTES:
1. REFER TO SURVEY NO. 15-184.
2. SEE SHEET NO. 1 FOR SURVEY NOTES.

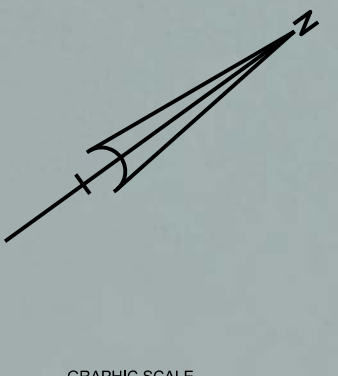
OUTER CUT

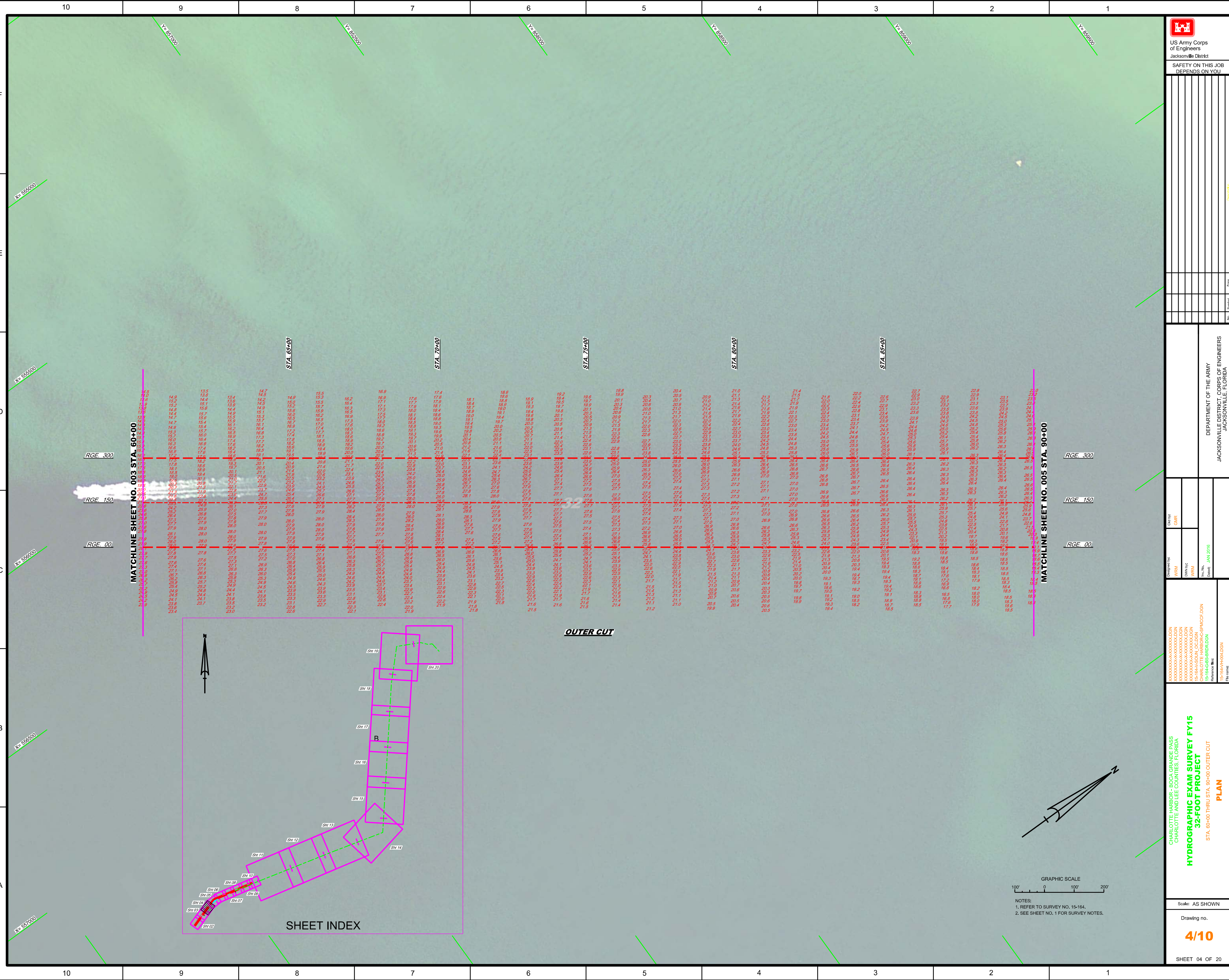


| AIDS TO NAVIGATION | PLANE COORDINATES | | LATITUDE | LONGITUDE |
|--------------------|-------------------|---------|--------------|--------------|
| | X | Y | | |
| LT. BUOY-5 (01116) | 555.512 | 855.176 | 26°41'09.82" | 82°18'29.73" |
| NUN BUOY-6 (01116) | 555.845 | 854.831 | 26°41'08.41" | 82°18'26.05" |

GRAPHIC SCALE
100' 0 100' 200'
NOTES:
1. REFER TO SURVEY NO. 14-116.
2. SEE SHEET NO. 1 FOR SURVEY NOTES.

OUTER CUT





MATCHLINE SHEET NO. 003 STA. 60+00

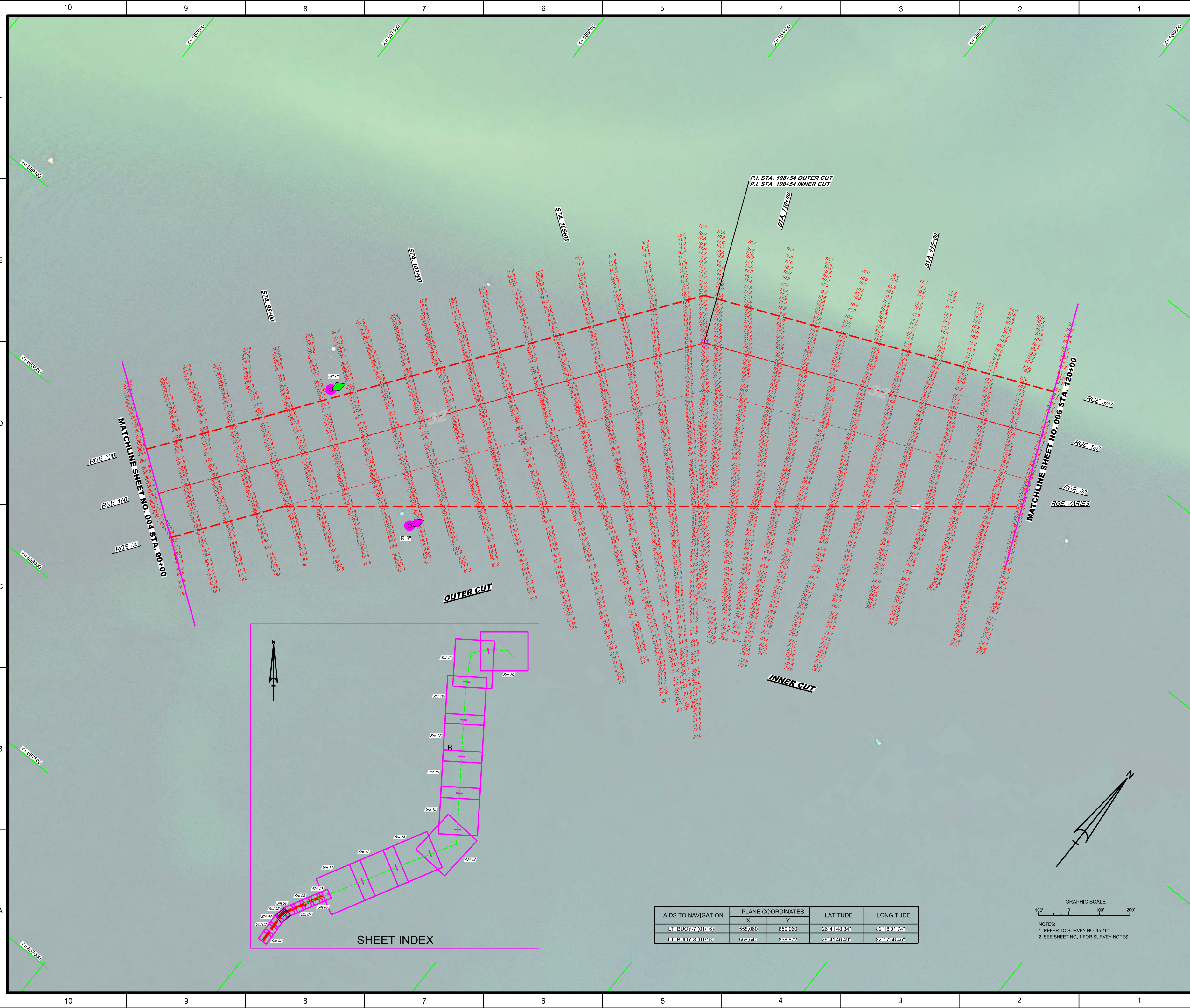
MATCHLINE SHEET NO. 005 STA. 90+00

OUTER CUT

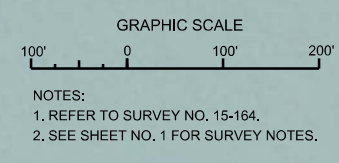
SHEET INDEX

GRAPHIC SCALE
100' 0 100' 200'

NOTES:
1. REFER TO SURVEY NO. 15-164.
2. SEE SHEET NO. 1 FOR SURVEY NOTES.



| AIDS TO NAVIGATION | PLANE COORDINATES | | LATITUDE | LONGITUDE |
|--------------------|-------------------|---------|--------------|--------------|
| | X | Y | | |
| L. BUOY-7 (0116) | 558,060 | 859,060 | 26°41'48.34" | 82°18'01.74" |
| L. BUOY-3 (0116) | 558,540 | 858,872 | 26°41'46.49" | 82°17'56.45" |

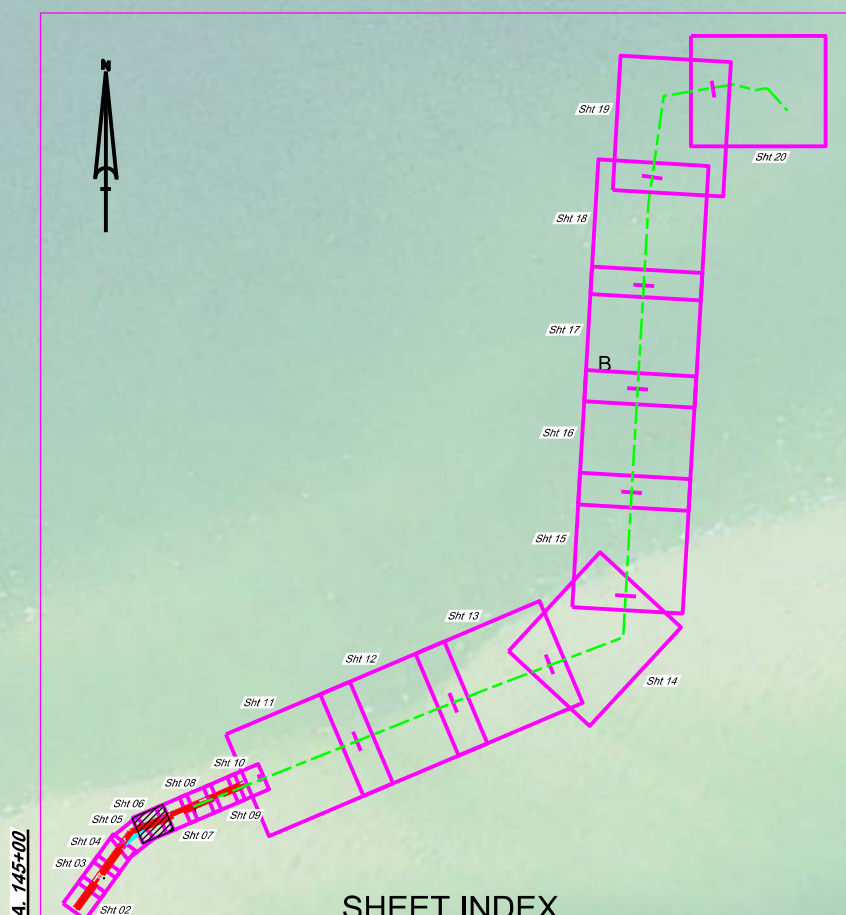


NOTES:
 1. REFER TO SURVEY NO. 15-164.
 2. SEE SHEET NO. 1 FOR SURVEY NOTES.

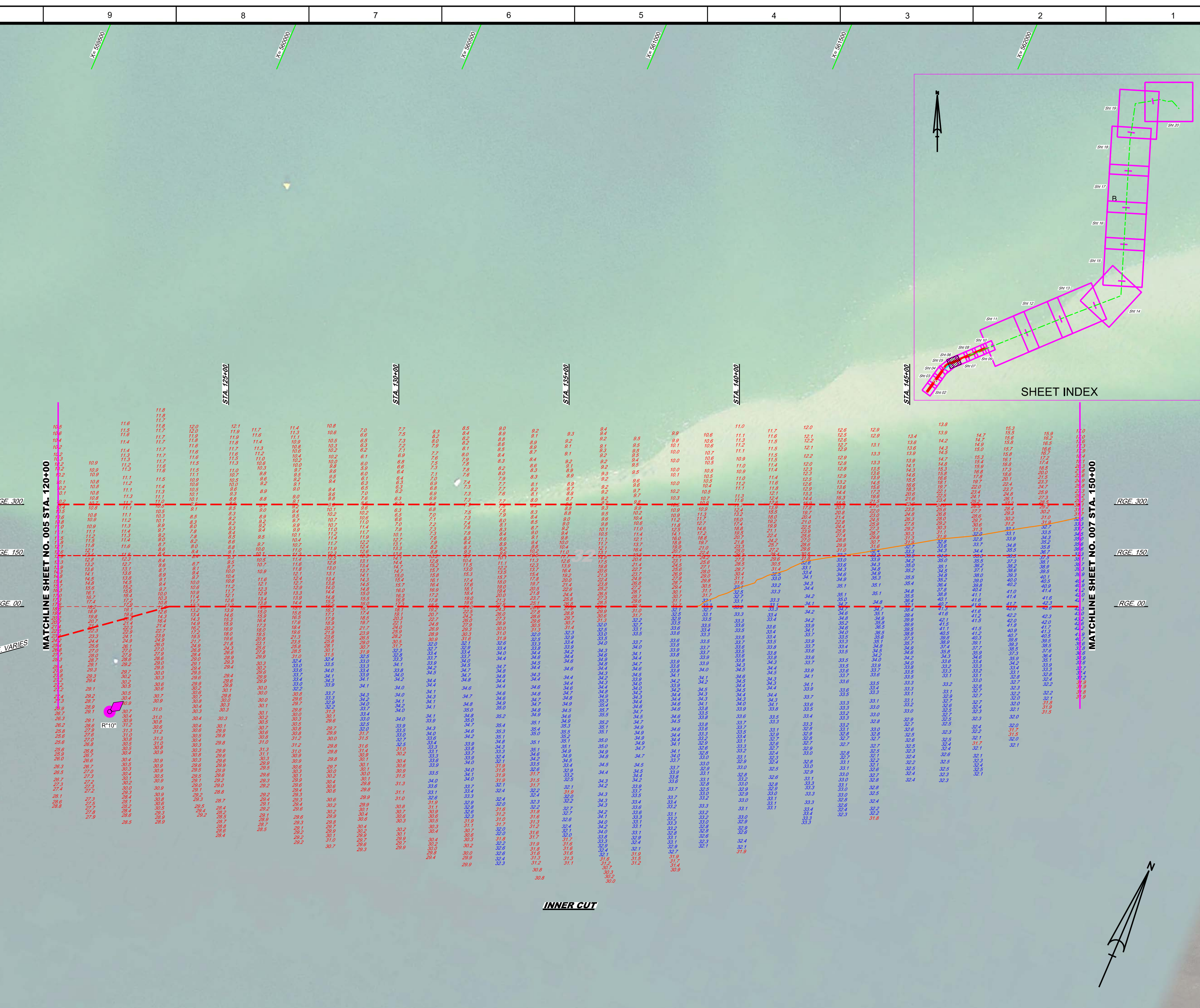


US Army Corps of Engineers
Jacksonville District

SAFETY ON THIS JOB
DEPENDS ON YOU



SHEET INDEX



INNER CUT

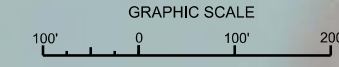
RGE. 300
RGE. 150
RGE. 00
RGE. VARIES

RGE. 300
RGE. 150
RGE. 00

MATCHLINE SHEET NO. 005 STA. 120+00

MATCHLINE SHEET NO. 007 STA. 150+00

| AIDS TO NAVIGATION | PLANE COORDINATES | | LATITUDE | LONGITUDE |
|---------------------|-------------------|---------|--------------|--------------|
| | X | Y | | |
| LT. BUOY-10 (01/16) | 560,293 | 860,033 | 26°41'58.03" | 82°17'37.15" |

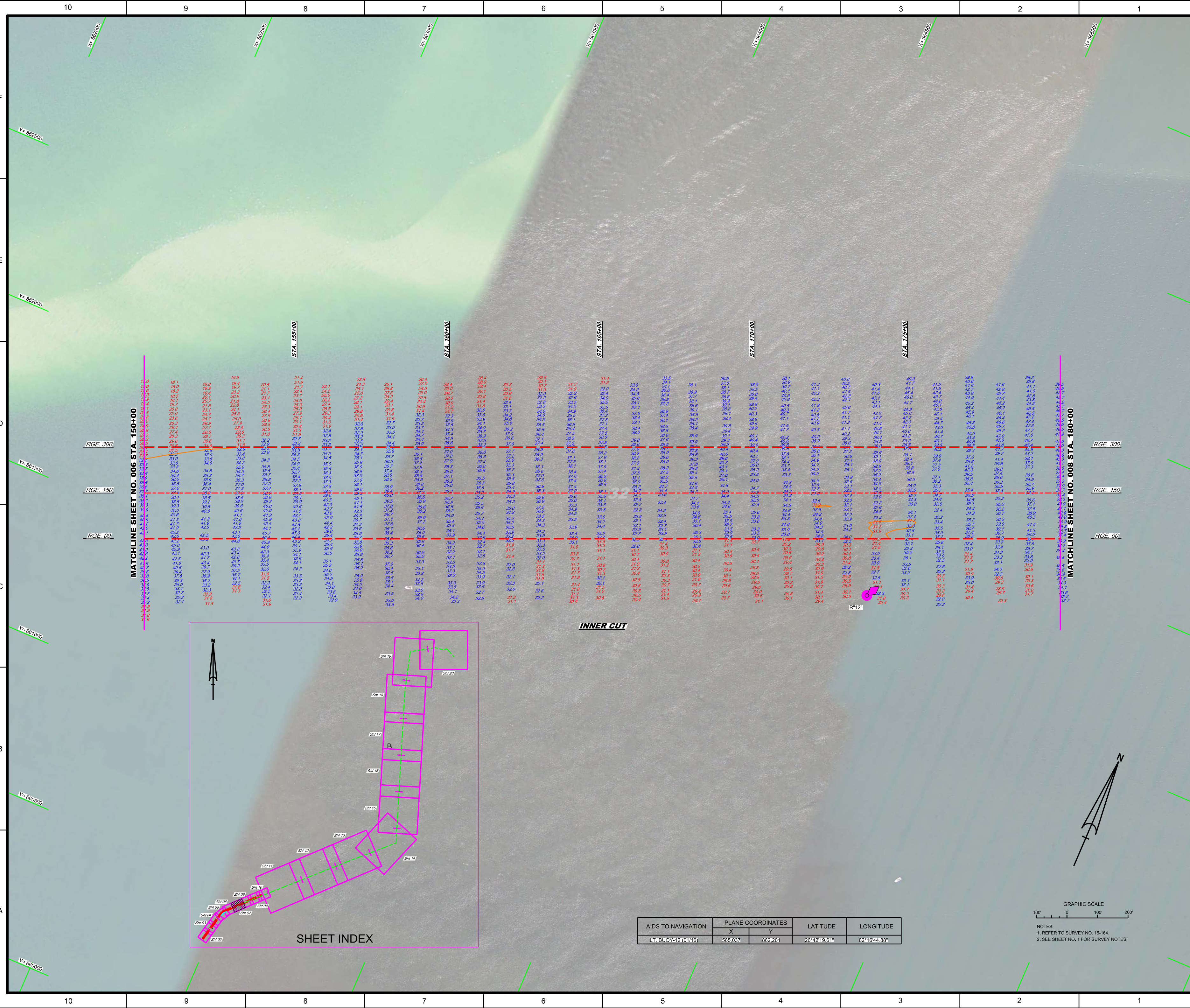


NOTES:
1. REFER TO SURVEY NO. 15-164.
2. SEE SHEET NO. 1 FOR SURVEY NOTES.

DEPARTMENT OF THE ARMY
JACKSONVILLE DISTRICT, CORPS OF ENGINEERS
JACKSONVILLE, FLORIDA

CHARLOTTE HARBOR - BOCA GRANDE PASS
CHARLOTTE AND LEE COUNTIES, FLORIDA
HYDROGRAPHIC EXAM SURVEY FY15
32-FOOT PROJECT
STA. 120+00 THRU STA. 150+00 INNER CUT
15-164-HR06.DGN
Reference: 15-164-HR06.DGN
Scale: AS SHOWN
Drawing No. 6/10
SHEET 06 OF 20

Created by: GHR
Designed by: WRM
Drawn by: WRM
Checked by: WRM
Date: JAN 2015



MATCHLINE SHEET NO. 006 STA. 150+00

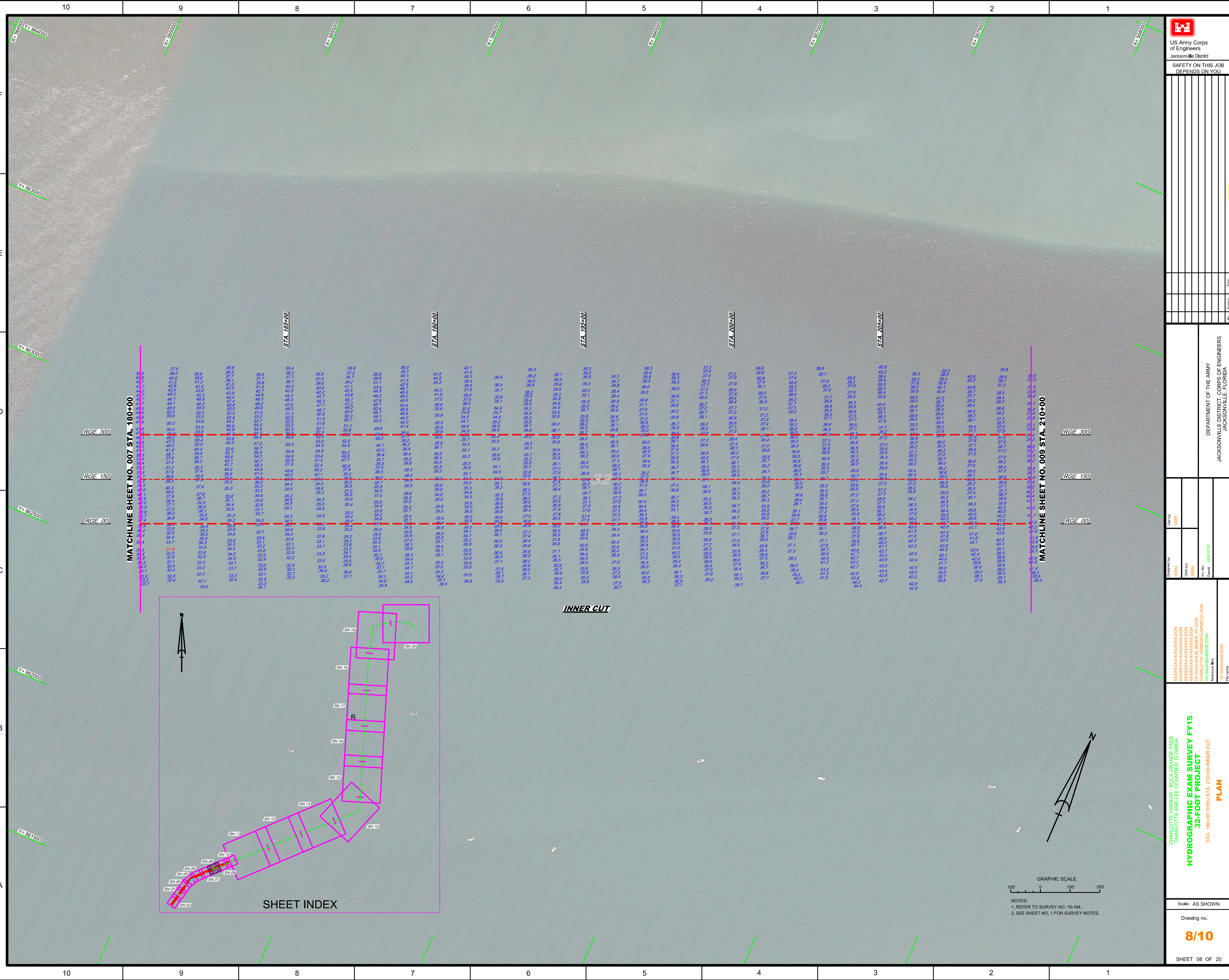
MATCHLINE SHEET NO. 008 STA. 180+00

INNER CUT

SHEET INDEX

| AIDS TO NAVIGATION | PLANE COORDINATES | | LATITUDE | LONGITUDE |
|--------------------|-------------------|---------|--------------|--------------|
| | X | Y | | |
| LT. BUOY-12 (0116) | 585.037 | 862.201 | 26°42'19.61" | 82°16'44.88" |

GRAPHIC SCALE
0 100 200
NOTES:
1. REFER TO SURVEY NO. 15184.
2. SEE SHEET NO. 1 FOR SURVEY NOTES.



MATCHLINE SHEET NO. 007 STA. 180+00

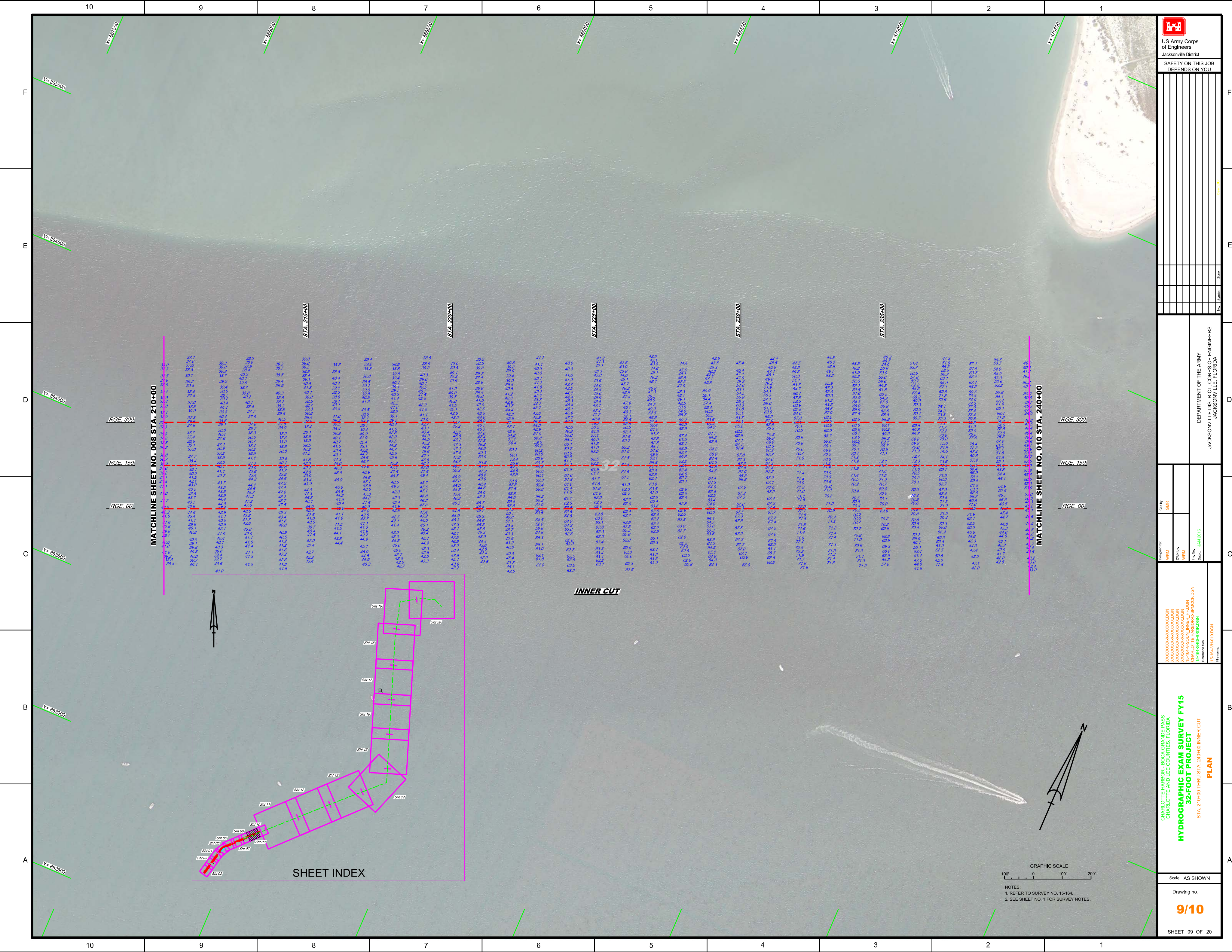
MATCHLINE SHEET NO. 009 STA. 210+00

INNER CUT

SHEET INDEX

GRAPHIC SCALE
100' 0 100' 200'

NOTES:
1. REFER TO SURVEY NO. 15-164,
2. SEE SHEET NO. 1 FOR SURVEY NOTES.



US Army Corps of Engineers
Jacksonville District

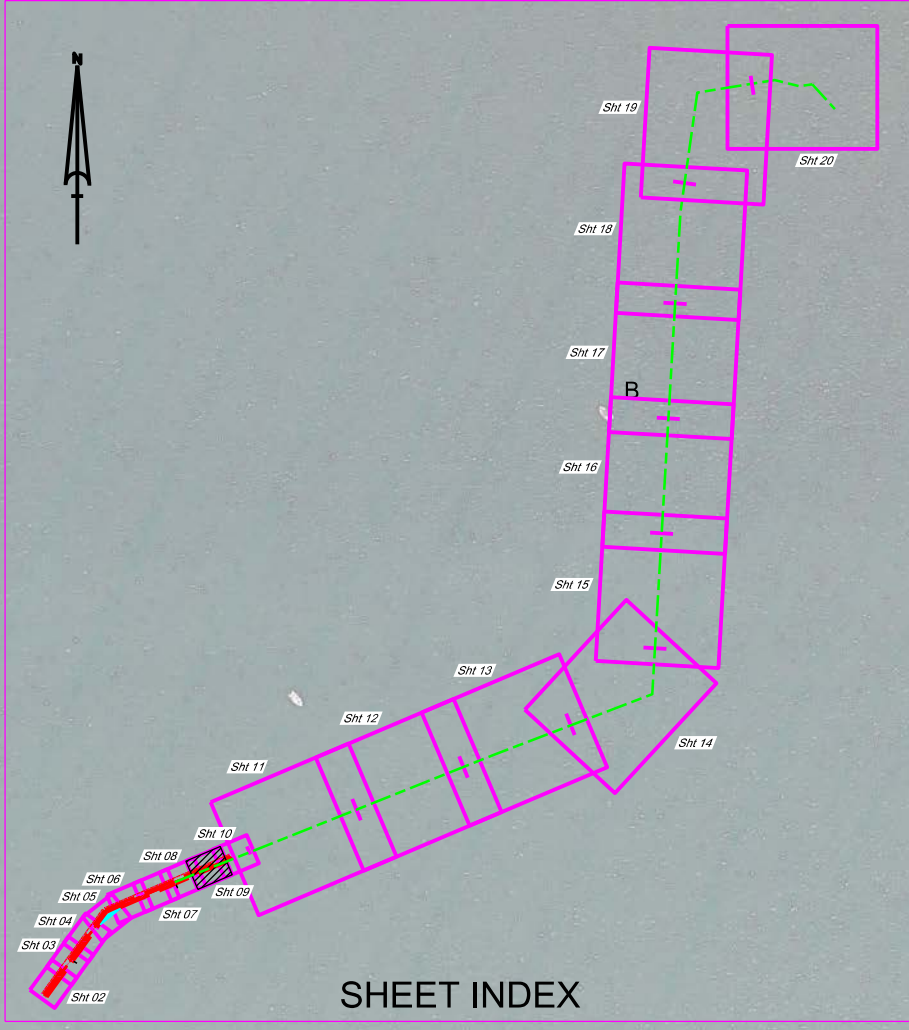
SAFETY ON THIS JOB DEPENDS ON YOU

| Rev. | Date | By | Check | Description |
|------|------|----|-------|-------------|
| | | | | |
| | | | | |
| | | | | |
| | | | | |
| | | | | |
| | | | | |
| | | | | |
| | | | | |
| | | | | |
| | | | | |

DEPARTMENT OF THE ARMY
JACKSONVILLE DISTRICT, CORPS OF ENGINEERS
JACKSONVILLE, FLORIDA

CHARLOTTE HARBOR - BOCA GRANDE PASS
 CHARLOTTE AND LEE COUNTIES, FLORIDA
HYDROGRAPHIC EXAM SURVEY FY15
32-FOOT PROJECT
 STA. 210+00 THRU STA. 240+00 INNER CUT
 PLAN
 Scale: AS SHOWN
 Drawing No. **9/10**
 SHEET 09 OF 20

Created by: GHR
 Drawn by: WRM
 Checked by: WRM
 Date: JAN 2018
 Project No: 15-164-00-00
 Drawing No: 9/10



MATCHLINE SHEET NO. 008 STA. 210+00

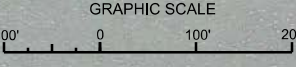
MATCHLINE SHEET NO. 010 STA. 240+00

RGE. 300
RGE. 150
RGE. 00

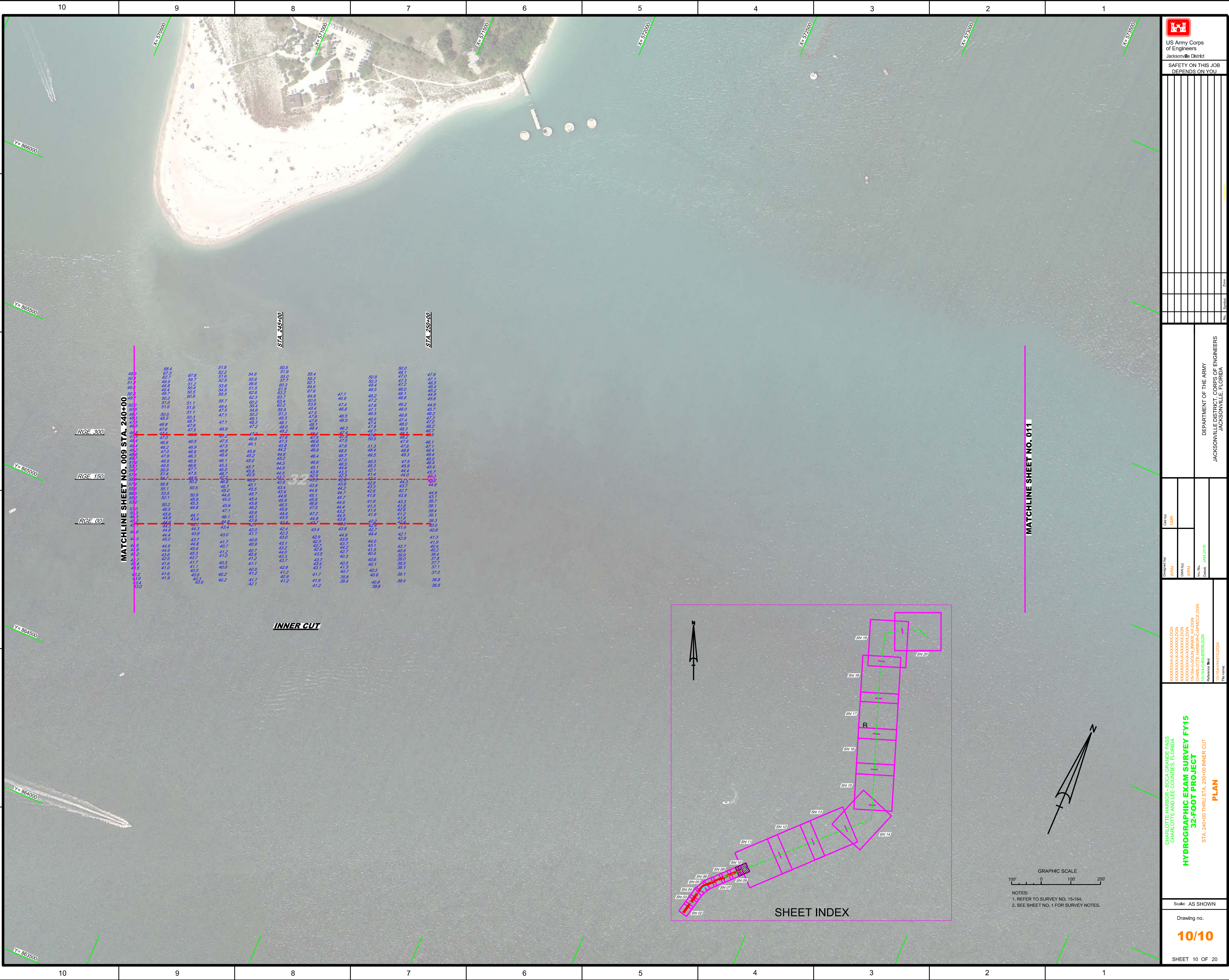
RGE. 300
RGE. 150
RGE. 00

10 9 8 7 6 5 4 3 2 1

10 9 8 7 6 5 4 3 2 1



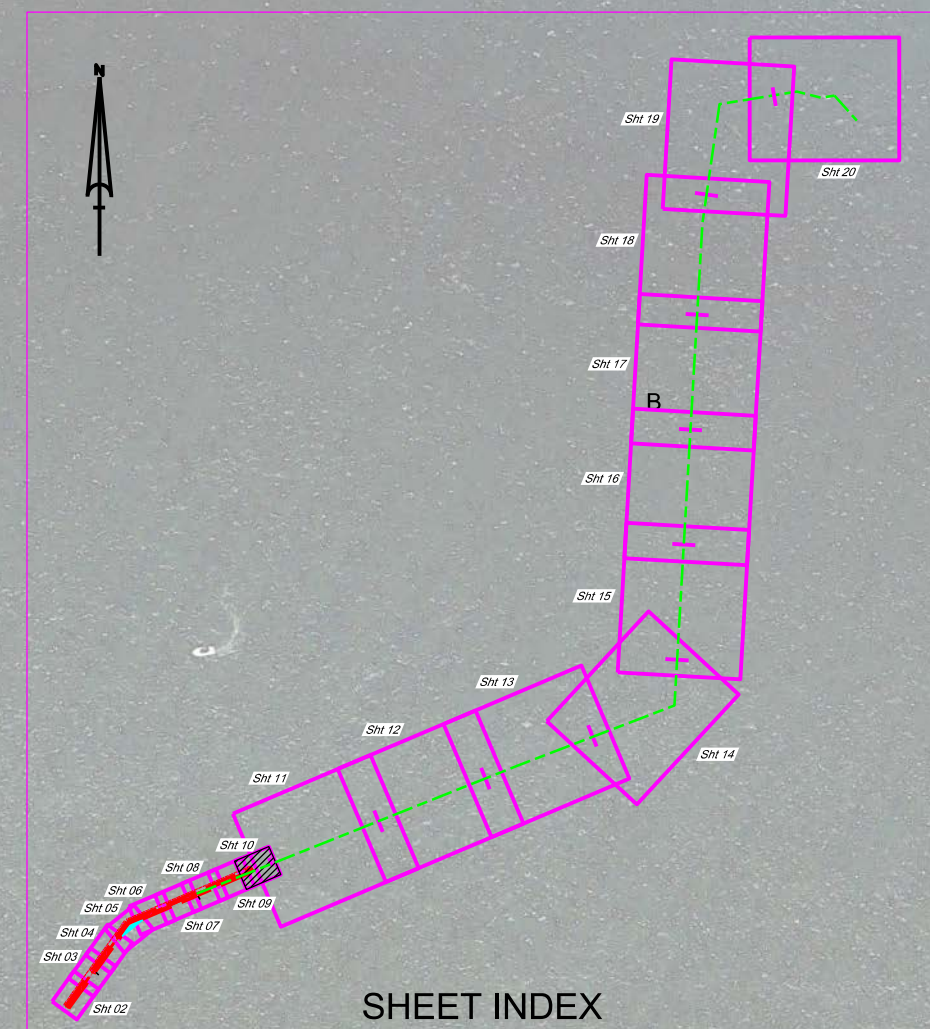
NOTES:
1. REFER TO SURVEY NO. 15-164.
2. SEE SHEET NO. 1 FOR SURVEY NOTES.



MATCHLINE SHEET NO. 009 STA. 240+00

MATCHLINE SHEET NO. 011

INNER CUT



NOTES:
 1. REFER TO SURVEY NO. 15-164.
 2. SEE SHEET NO. 1 FOR SURVEY NOTES.

| | |
|---|--|
| US Army Corps of Engineers Jacksonville District SAFETY ON THIS JOB DEPENDS ON YOU | |
| Designated By: WRM DWN POC WRM File No.: 15-164-00 Date: JAN 2016 | Checked By: GHR CHARLOTTE HARBOR - BOCCA GRANDE PASS CHARLOTTE AND LEE COUNTIES, FLORIDA HYDROGRAPHIC EXAM SURVEY FY15 32-FOOT PROJECT STA. 240+00 THRU STA. 260+00 INNER CUT PLAN |
| DEPARTMENT OF THE ARMY JACKSONVILLE DISTRICT, CORPS OF ENGINEERS JACKSONVILLE, FLORIDA | |
| Scale: AS SHOWN Drawing no. 10/10 SHEET 10 OF 20 | |