

# ST. PETERSBURG HARBOR PINELLAS COUNTY, FLORIDA HYDROGRAPHIC EXAM SURVEY FY15 12 TO 24-FOOT PROJECT

- SURVEY NOTES**
- REFER TO SURVEY NO. 15-163.
  - SOUNDINGS ARE IN FEET AND TENTHS AND REFER TO NOAA'S REPORTED MEAN LOWER LOW WATER (MLLW) OF THE 1983-2001 TIDAL EPOCH.
  - TIDAL REDUCTIONS WERE OBTAINED UTILIZING A REAL-TIME KINEMATIC (RTK) GPS AND REFERENCED TO MLLW UTILIZING A HYPACK KINEMATIC TIDE DATUM (KTD) MODEL. KTD FILE NAME IS: "SPC-FL-WEST-2010-12-07.KTD".
  - ALL ELEVATIONS ARE BELOW THE CHART DATUM UNLESS PRECEDED BY A (+) SIGN.
  - PLANE COORDINATES ARE BASED ON THE TRANSVERSE MERCATOR PROJECTION FOR THE WEST ZONE OF FLORIDA AND REFERENCED TO NORTH AMERICAN DATUM OF 1983, REALIZATION OF 2007 (NAD83(2007)).
  - ALL STATIONING REFERS TO THE CENTERLINE OF THE CHANNEL.
  - THIS SURVEY WAS PERFORMED USING REAL-TIME KINEMATIC (RTK) GPS POSITIONING WITH THE FOLLOWING REFERENCE BASE LOCATIONS:  
REFERENCE BASE LOCATED AT "DILLMAN" (COE PID: ACI970)  
TIDE MEASURE DOWN POINT LOCATED AT "EDD-60" (PID: AG5298)
  - DEPTHS DEPICTED BY THIS SURVEY ARE REFERENCED TO MLLW, TIDAL EPOCH 1983-2001 AS REPORTED BY THE NATIONAL OCEANIC AND ATMOSPHERIC ADMINISTRATION (NOAA). NOAA'S VDATUM MODEL WAS USED AND CALIBRATED TO THE PUBLISHED MLLW HEIGHTS OF THE BENCHMARKS ASSOCIATED WITH THE TIDE GAGE SITE SPECIFIED BELOW:  
NOAA TIDAL STATION 872-6520, ST. PETERSBURG, TAMPA BAY FOR ALL CUTS
  - VERTICAL MEASUREMENTS WERE MADE USING A ROSS MODEL 835C SMART-SOUNDER WITH A DUAL-FREQUENCY 28/200 KHZ SINGLE-BEAM TRANSDUCER AND AN EDGETECH 6205 OPERATING AT 550/600 KHZ. ALL SOUNDINGS SHOWN ARE IN HIGH FREQUENCY EXCEPT BAYBORO HARBOR BASIN, WHICH IS SHOWN IN LOW FREQUENCY.
  - VESEL: SB-34      DATE OF SURVEY: 24 AUG - 03 SEP 2015      CUT: CUT-A, ENTRANCE CHANNEL, OUTER CUT, CUT-B, TURNING BASIN, BAYBORO HBR BASIN, BAYBORO YACHT BASIN
  - AIDS TO NAVIGATION WERE LOCATED DURING THIS SURVEY.
  - THE INFORMATION DEPICTED ON THIS MAP REPRESENTS THE RESULTS OF SURVEYS MADE ON THE DATES INDICATED ABOVE AND CAN ONLY BE CONSIDERED AS INDICATING THE GENERAL CONDITIONS AT THAT TIME. THIS CHART IS SOLELY FOR THE DISTRIBUTION OF AVAILABLE DEPTHS AT THE TIME OF THE SURVEY.
  - SURVEY ACCURACY PERFORMANCE STANDARDS, QUALITY CONTROL, AND QUALITY ASSURANCE REQUIREMENTS WERE FOLLOWED DURING THIS SURVEY IN ACCORDANCE WITH USACE EM 11102-1003, HYDROGRAPHIC SURVEYING, 30 NOV 13.

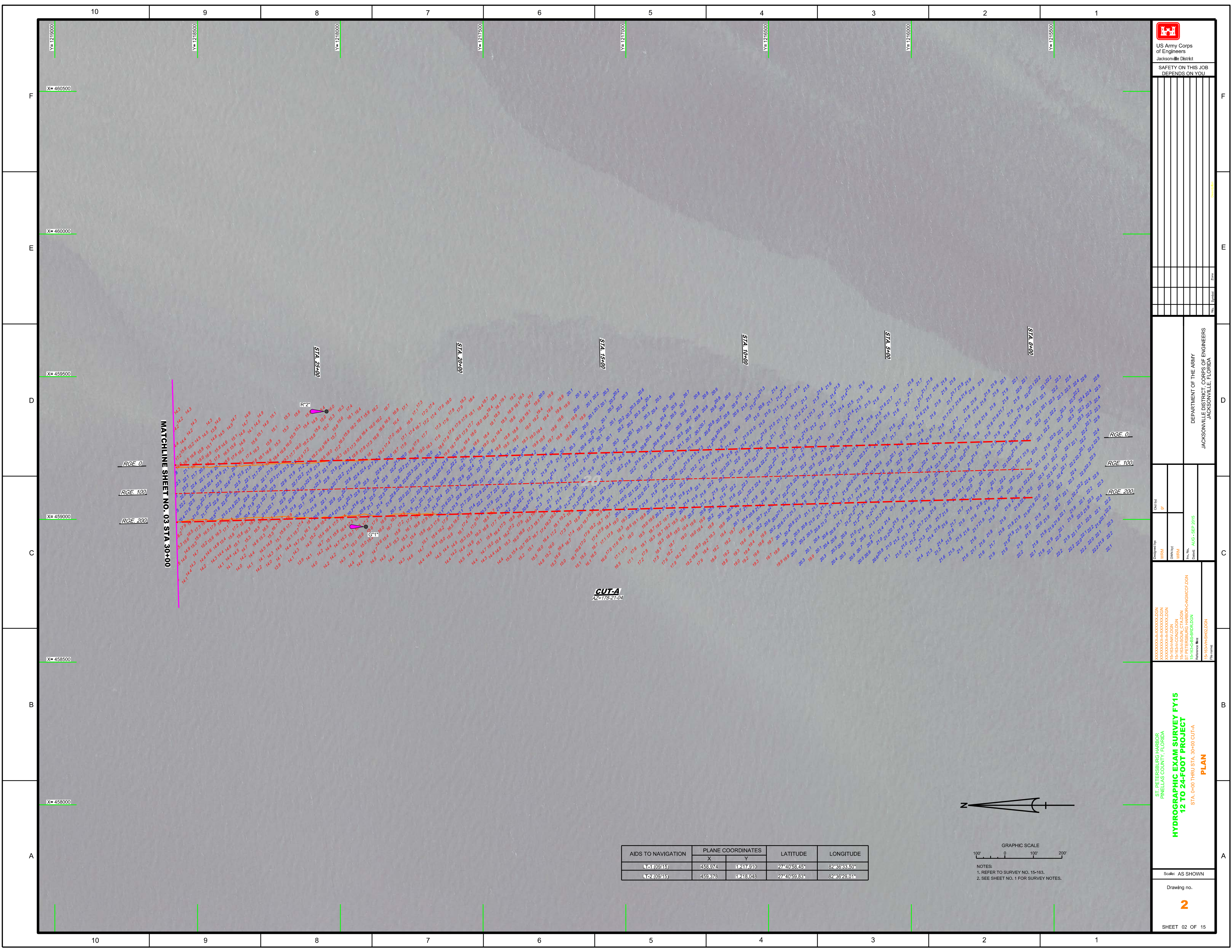
LEGEND	
	MONUMENT
	LIGHTED BEACON
	GREEN DAYBEACON
	RED DAYBEACON
	RED LIGHTED BUOY
	GREEN LIGHTED BUOY
	CAN BUOY
	NUN BUOY
	TIDE STAFF
	PROJECT DEPTH

US Army Corps of Engineers  
Jacksonville District  
SAFETY ON THIS JOB  
DEPENDS ON YOU

DEPARTMENT OF THE ARMY  
JACKSONVILLE DISTRICT, CORPS OF ENGINEERS  
JACKSONVILLE, FLORIDA

ST. PETERSBURG HARBOR  
PINELLAS COUNTY, FLORIDA  
HYDROGRAPHIC EXAM SURVEY FY15  
12 TO 24-FOOT PROJECT  
INDEX, LOCATION AND VICINITY  
MAP

Scale: AS SHOWN  
Drawing no. 1  
SHEET 01 OF 15



MATCHLINE SHEET NO. 03 STA 30+00

RGE 0  
RGE 100  
RGE 200

STA 25+00

STA 26+00

STA 27+00

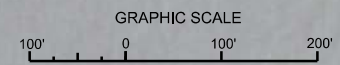
STA 28+00

STA 29+00

STA 30+00

CUT-A  
AZ=178-21-04

AIDS TO NAVIGATION	PLANE COORDINATES		LATITUDE	LONGITUDE
	X	Y		
11 (09/15)	458974	1217910	27°40'58.45"	82°36'33.50"
12 (09/15)	459378	1218048	27°40'59.83"	82°36'29.01"



NOTES:  
1. REFER TO SURVEY NO. 15-163.  
2. SEE SHEET NO. 1 FOR SURVEY NOTES.



US Army Corps of Engineers  
Jacksonville District

SAFETY ON THIS JOB  
DEPENDS ON YOU

DEPARTMENT OF THE ARMY  
JACKSONVILLE DISTRICT, CORPS OF ENGINEERS  
JACKSONVILLE, FLORIDA

Designed by: WRM  
Checked by: WRM  
Date: AUG - SEP 2015

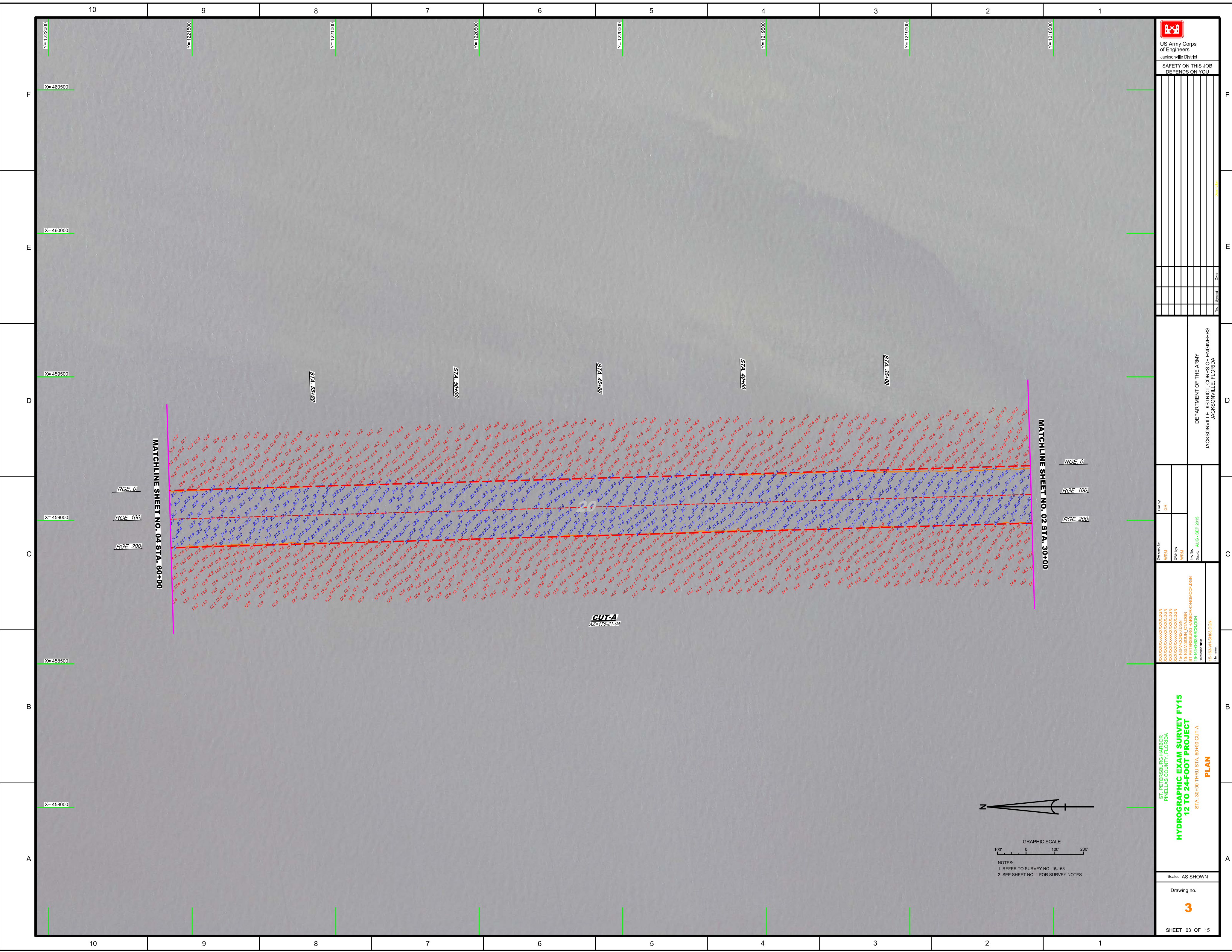
XXXXXXXXXXXXXXXXXXXX.DGN  
XXXXXXXXXXXXXXXXXXXX.DGN  
15-163-AV.DGN  
15-163-AV-CON.DGN  
15-163-SS-BRID.DGN  
15-163-SS-BRID.DGN  
15-163-SS-H2.DGN


ST. PETERSBURG HARBOR  
PINELAS COUNTY, FLORIDA  
**HYDROGRAPHIC EXAM SURVEY FY15  
12 TO 24-FOOT PROJECT**  
STA. 0+00 THRU STA. 30+00 CUT-A  
**PLAN**

Scale: AS SHOWN

Drawing no.  
**2**

SHEET 02 OF 15




  
 US Army Corps of Engineers  
 Jacksonville District  
 SAFETY ON THIS JOB  
 DEPENDS ON YOU

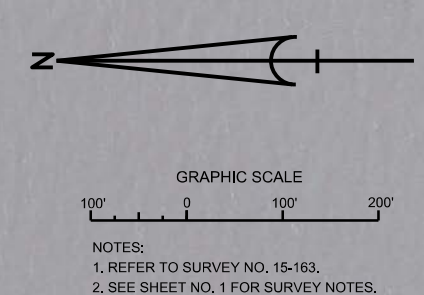
Designed by	WRM
Checked by	GRL
Drawn by	WRM
Scale	AS SHOWN
Date	AUG - SEP 2015

DEPARTMENT OF THE ARMY  
 JACKSONVILLE DISTRICT, CORPS OF ENGINEERS  
 JACKSONVILLE, FLORIDA

ST. PETERSBURG HARBOR  
 PINELAS COUNTY, FLORIDA  
**HYDROGRAPHIC EXAM SURVEY FY15**  
**12 TO 24-FOOT PROJECT**  
 STA. 30+00 THRU STA. 60+00 CUT-A  
**PLAN**

Drawing no.  
**3**

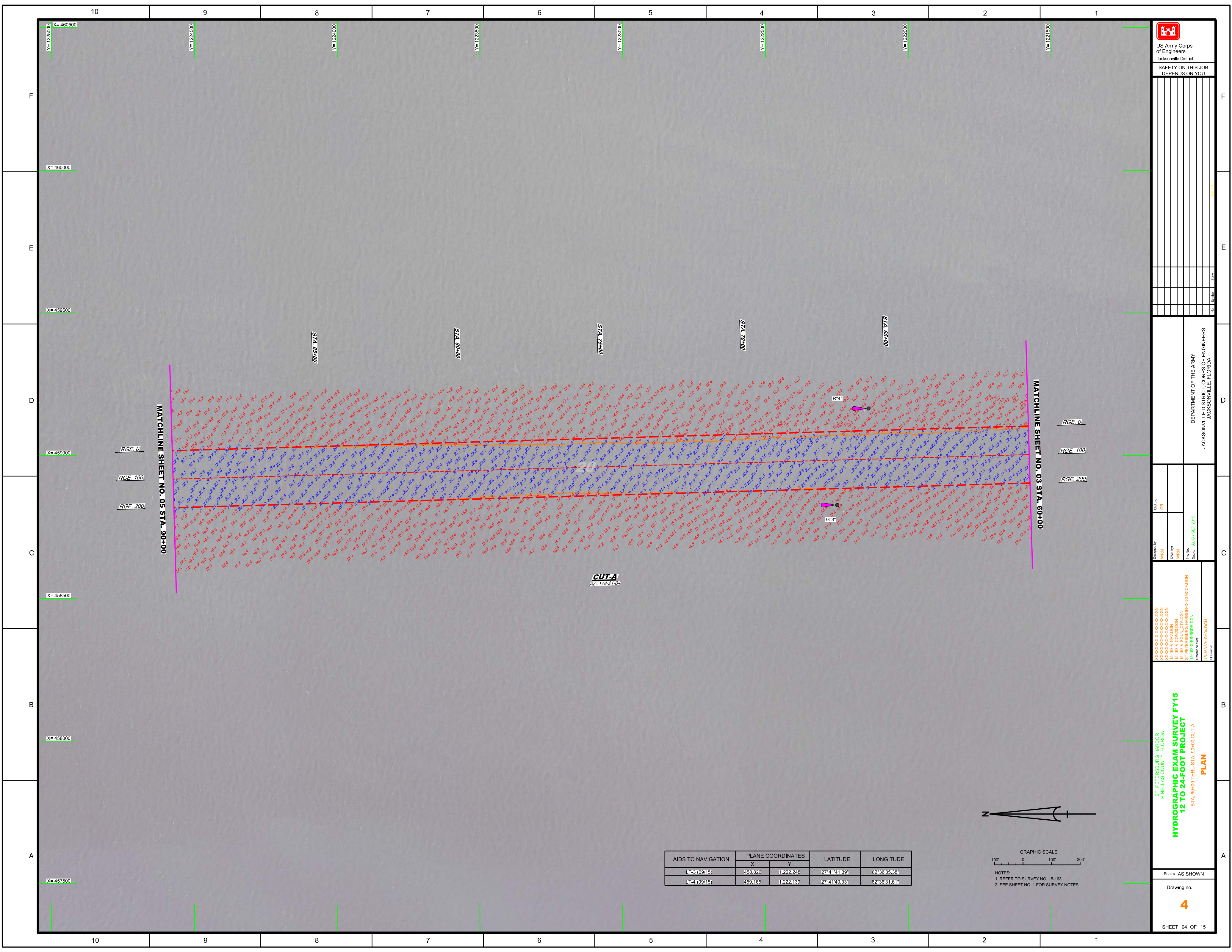
SHEET 03 OF 15




MATCHLINE SHEET NO. 04 STA. 60+00

MATCHLINE SHEET NO. 02 STA. 30+00

**CUT-A**  
AZ=178-21-04




  
 US Army Corps of Engineers  
 Jacksonville District  
 SAFETY ON THIS JOB  
 DEPENDS ON YOU

DEPARTMENT OF THE ARMY  
 JACKSONVILLE DISTRICT, CORPS OF ENGINEERS  
 JACKSONVILLE, FLORIDA

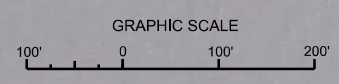
Designed by: WRM  
 Drawn by: WRM  
 Checked: AUG - SEP 2015  
 File name: 15-183V-HSHALDGN  
 Reference file: 15-183V-HSHALDGN

ST. PETERSBURG HARBOR  
 PINELAS COUNTY, FLORIDA  
**HYDROGRAPHIC EXAM SURVEY FY15**  
**12 TO 24-FOOT PROJECT**  
 STA. 60+00 THRU STA. 90+00 CUT-A  
**PLAN**

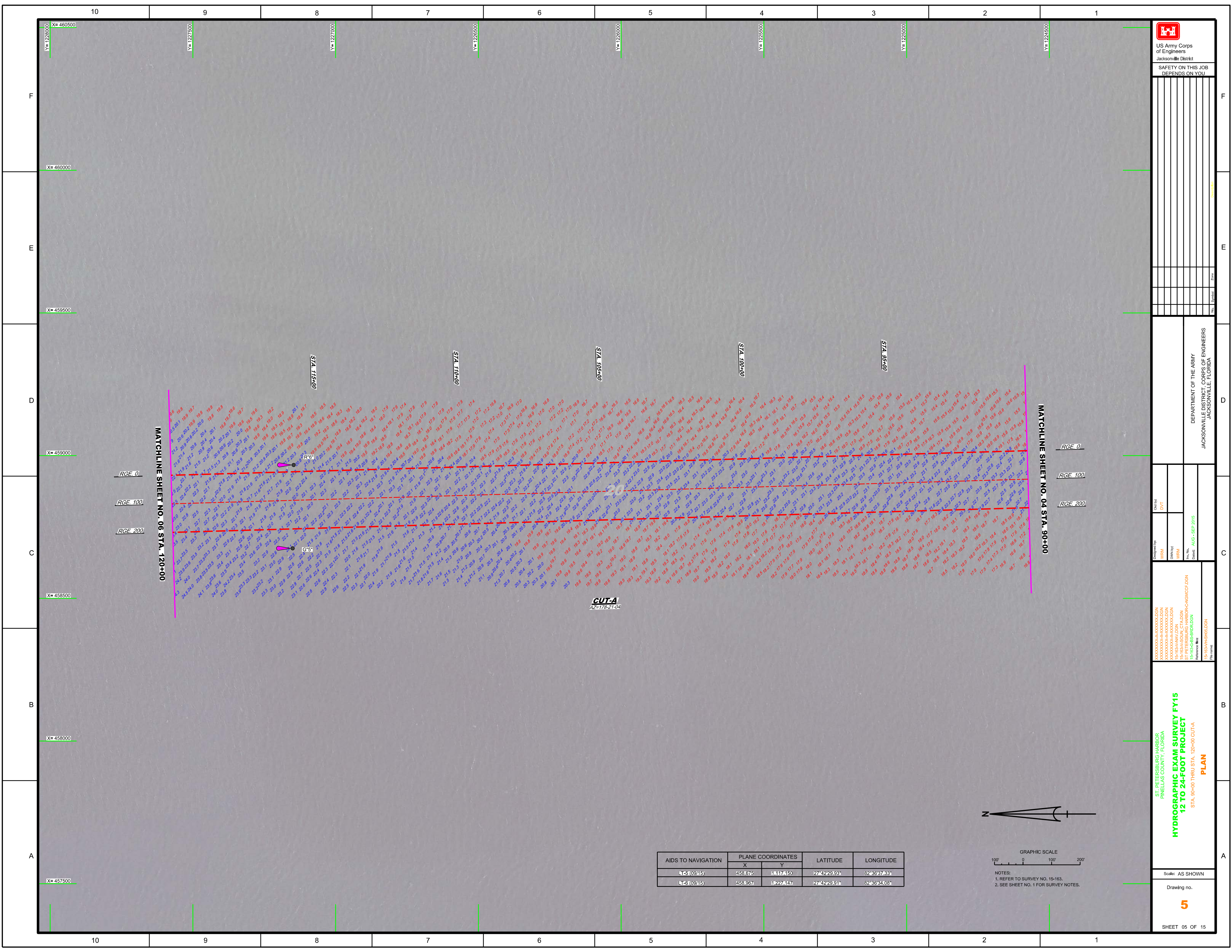
Scale: AS SHOWN  
 Drawing no. **4**  
 SHEET 04 OF 15


**CUT-A**  
AZ=178-21-04

AIDS TO NAVIGATION	PLANE COORDINATES		LATITUDE	LONGITUDE
	X	Y		
15-3 (09/15)	458,826	1,222,245	27°41'41.33"	82°36'35.38"
15-4 (08/15)	458,165	1,222,139	27°41'40.33"	82°36'31.61"



NOTES:  
 1. REFER TO SURVEY NO. 15-163.  
 2. SEE SHEET NO. 1 FOR SURVEY NOTES.




  
 US Army Corps of Engineers  
 Jacksonville District  
 SAFETY ON THIS JOB  
 DEPENDS ON YOU

DEPARTMENT OF THE ARMY  
 JACKSONVILLE DISTRICT, CORPS OF ENGINEERS  
 JACKSONVILLE, FLORIDA

Designed by: **WRM**  
 Drawn by: **WRM**  
 Checked by: **WRM**  
 Date: **AUG - SEP 2015**

ST. PETERSBURG HARBOR  
 PINELAS COUNTY, FLORIDA  
**HYDROGRAPHIC EXAM SURVEY FY15**  
**12 TO 24-FOOT PROJECT**  
 STA. 90+00 THRU STA. 120+00 CUT-A  
**PLAN**

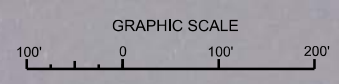
Scale: AS SHOWN  
 Drawing no. **5**  
 SHEET 05 OF 15

MATCHLINE SHEET NO. 06 STA. 120+00

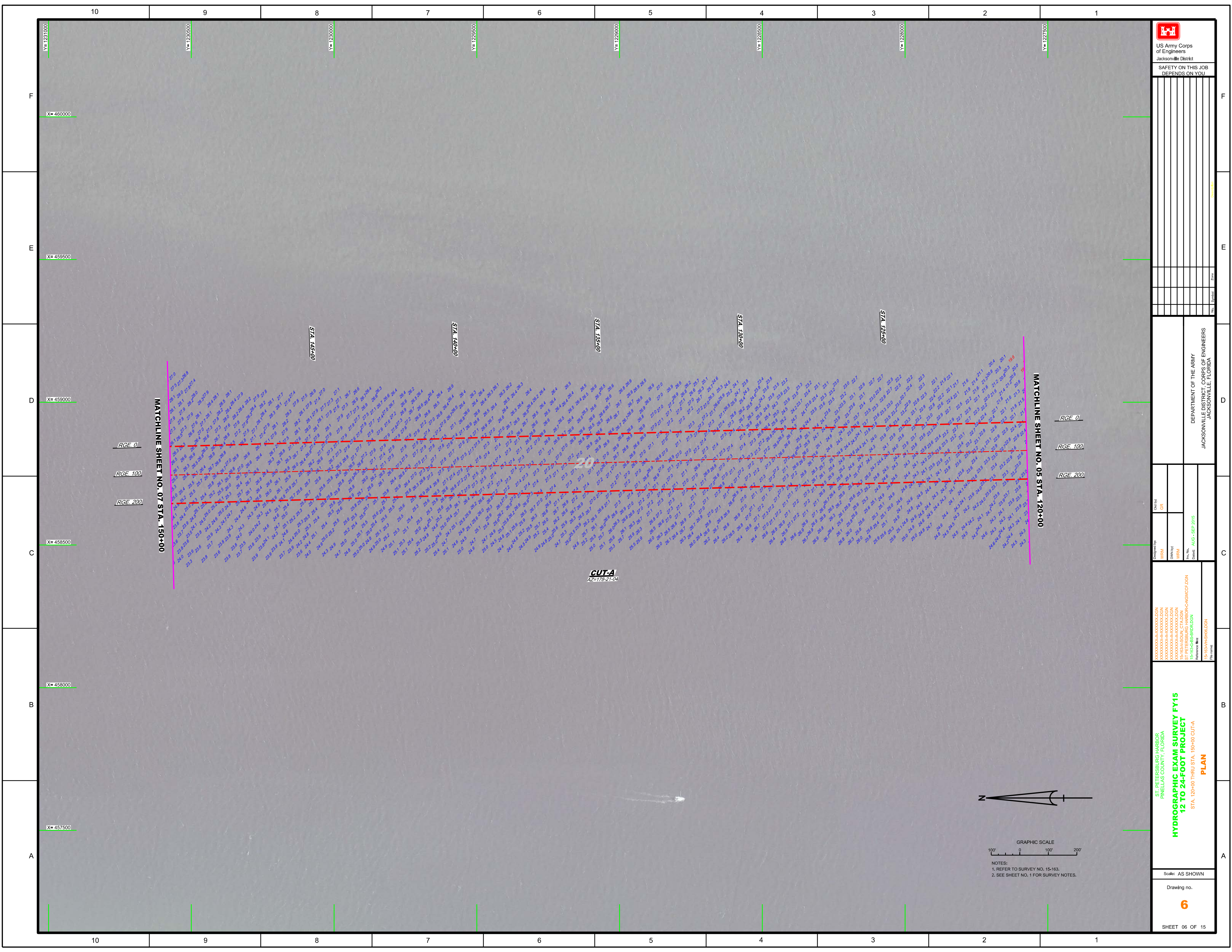
MATCHLINE SHEET NO. 04 STA. 90+00

**CUT-A**  
AZ=178-21-04

AIDS TO NAVIGATION	PLANE COORDINATES		LATITUDE	LONGITUDE
	X	Y		
LT-5 (0915)	458,675	1127,150	27°42'29.93"	82°36'37.33"
LT-6 (0915)	458,967	1127,147	27°42'29.91"	82°36'34.08"



NOTES:  
 1. REFER TO SURVEY NO. 15-163.  
 2. SEE SHEET NO. 1 FOR SURVEY NOTES.



US Army Corps of Engineers
   
 Jacksonville District
   
**SAFETY ON THIS JOB**
  
**DEPENDS ON YOU**

No.	Symbol	Zone

DEPARTMENT OF THE ARMY
   
 JACKSONVILLE DISTRICT, CORPS OF ENGINEERS
   
 JACKSONVILLE, FLORIDA

Call by: GRI

Designed by:
   
 VPM
   
 DVM/PC
   
 WRM

File Name:
   
 15-183-GS-BRDALDN
   
 Reference File:
   
 15-183-VHSB-DGN

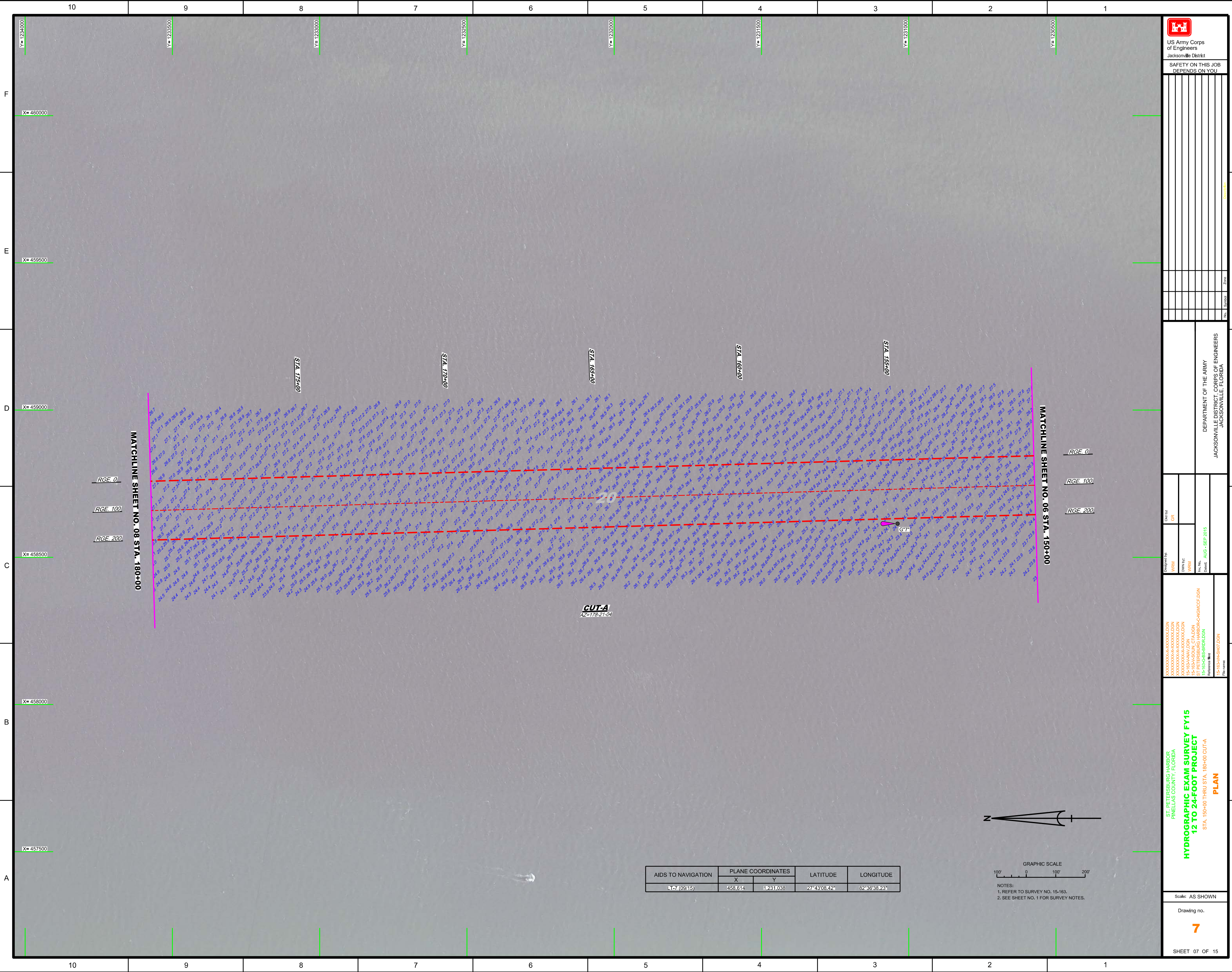
ST. PETERSBURG HARBOR
   
 PINELAS COUNTY, FLORIDA


**HYDROGRAPHIC EXAM SURVEY FY15**
  
**12 TO 24-FOOT PROJECT**
  
 STA. 120+00 THRU STA. 150+00 CUT-A

**PLAN**

Scale: AS SHOWN

Drawing no.
   
**6**
  
 SHEET 06 OF 15




  
 US Army Corps of Engineers  
 Jacksonville District  
 SAFETY ON THIS JOB  
 DEPENDS ON YOU

DEPARTMENT OF THE ARMY  
 JACKSONVILLE DISTRICT, CORPS OF ENGINEERS  
 JACKSONVILLE, FLORIDA

Drawn by: GRL  
 Checked by: GRL  
 Date: AUG - SEP 2015

ST. PETERSBURG HARBOR  
 PINELAS COUNTY, FLORIDA  
**HYDROGRAPHIC EXAM SURVEY FY15**  
**12 TO 24-FOOT PROJECT**  
 STA. 150+00 THRU STA. 180+00 CUT-A  
**PLAN**

Scale: AS SHOWN  
 Drawing no. **7**  
 SHEET 07 OF 15

AIDS TO NAVIGATION	PLANE COORDINATES		LATITUDE	LONGITUDE
	X	Y		
17 (09/15)	458.614	1231.038	2743308.424	8243683.231

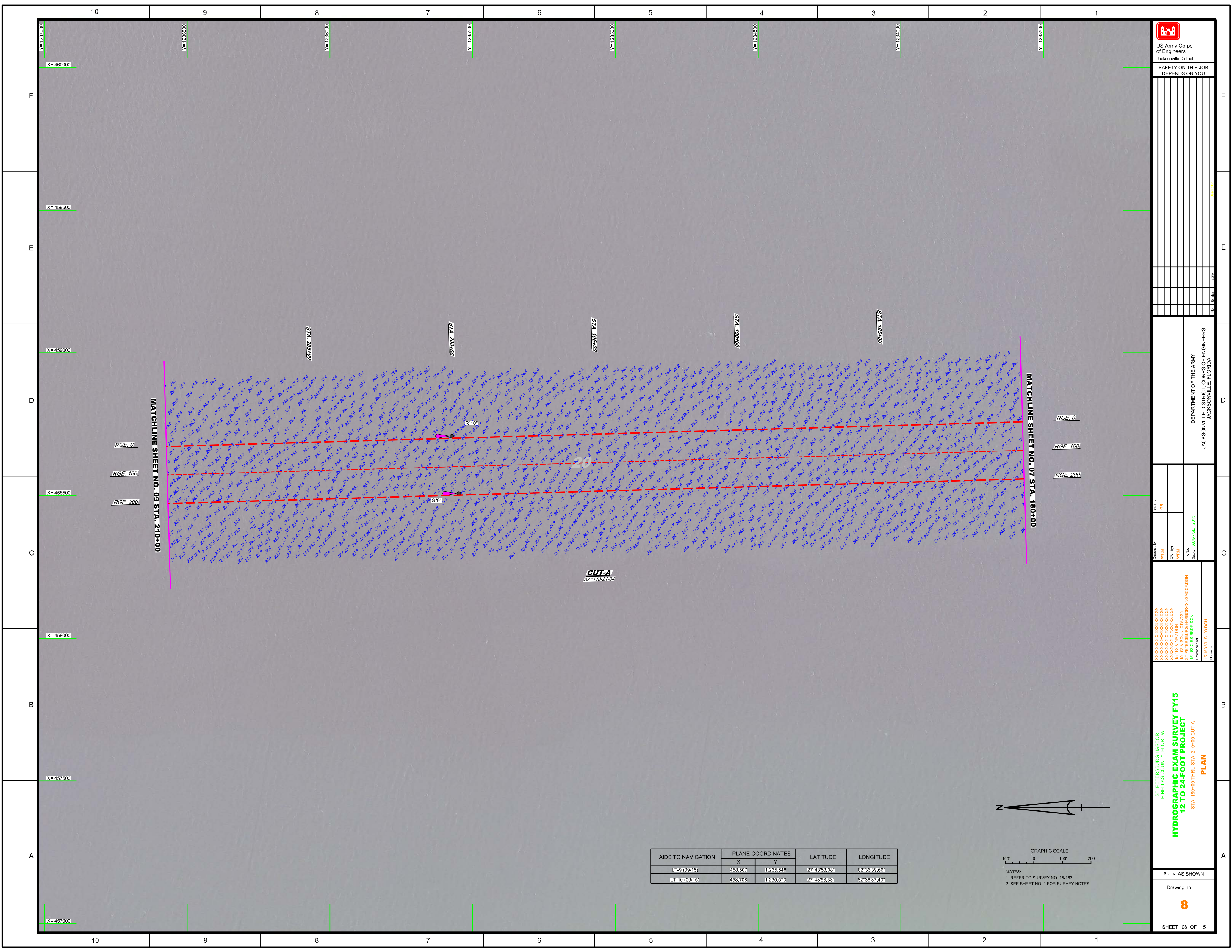



NOTES:  
 1. REFER TO SURVEY NO. 15-163.  
 2. SEE SHEET NO. 1 FOR SURVEY NOTES.

MATCHLINE SHEET NO. 08 STA. 180+00

MATCHLINE SHEET NO. 06 STA. 150+00

**CUT-A**  
 AZ=178-21-04




  
 US Army Corps of Engineers  
 Jacksonville District  
 SAFETY ON THIS JOB  
 DEPENDS ON YOU

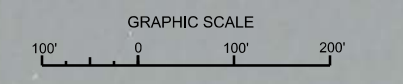
DEPARTMENT OF THE ARMY  
 JACKSONVILLE DISTRICT, CORPS OF ENGINEERS  
 JACKSONVILLE, FLORIDA

Drawn by: GRL  
 Checked by: GRL  
 Date: AUG - SEP 2015

ST. PETERSBURG HARBOR  
 PINELAS COUNTY, FLORIDA  
**HYDROGRAPHIC EXAM SURVEY FY15**  
**12 TO 24-FOOT PROJECT**  
 STA. 180+00 THRU STA. 210+00 CUT-A  
**PLAN**

Scale: AS SHOWN  
 Drawing no. **8**  
 SHEET 08 OF 15

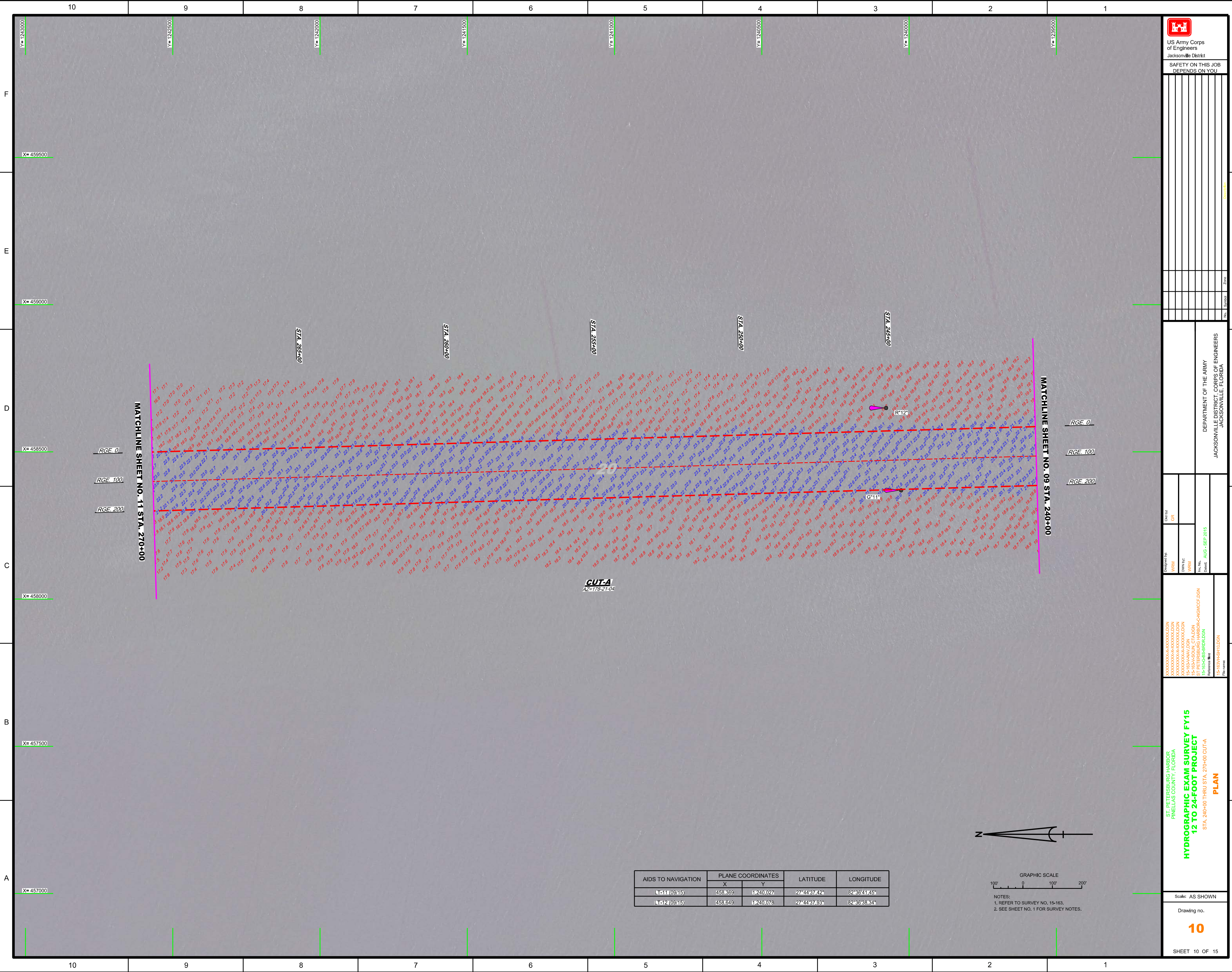
AIDS TO NAVIGATION	PLANE COORDINATES		LATITUDE	LONGITUDE
	X	Y		
1-9 (09/15)	458,507	1,235,548	27°43'53.08"	82°36'39.66"
1-10 (09/15)	458,708	1,235,573	27°43'53.333"	82°36'37.43"



NOTES:  
 1. REFER TO SURVEY NO. 15-163,  
 2. SEE SHEET NO. 1 FOR SURVEY NOTES.





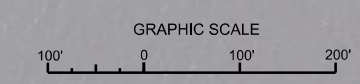


MATCHLINE SHEET NO. 11 STA. 270+00


MATCHLINE SHEET NO. 09 STA. 240+00

**CUT-A**  
AE=178-21-04

AIDS TO NAVIGATION	PLANE COORDINATES		LATITUDE	LONGITUDE
	X	Y		
11 (09/15)	458369	1240027	27°44'37.42"	82°36'41.45"
12 (09/15)	458649	1240076	27°44'37.93"	82°36'38.34"



NOTES:  
1. REFER TO SURVEY NO. 15-163.  
2. SEE SHEET NO. 1 FOR SURVEY NOTES.



US Army Corps of Engineers  
Jacksonville District

SAFETY ON THIS JOB  
DEPENDS ON YOU

---

Designed by: **WRM**

Checked by: **GRL**

Drawn by: **WRM**

Plot Date: **AUG - SEP 2015**

DEPARTMENT OF THE ARMY  
JACKSONVILLE DISTRICT, CORPS OF ENGINEERS  
JACKSONVILLE, FLORIDA

---

XXXXXXXXXXXXXXXXXXXX  
XXXXXXXXXXXXXXXXXXXX  
15-163-AV-DGN  
XXXXXXXXXXXXXXXXXXXX  
XXXXXXXXXXXXXXXXXXXX  
ST PETERSBURG HARBOR-CANAL-CDN  
CUT-A  
15-163-BS-BRD-DGN  
Reference File:  
15-163VHSH-DGN  
File name:

ST. PETERSBURG HARBOR  
PINELAS COUNTY, FLORIDA

**HYDROGRAPHIC EXAM SURVEY FY15  
12 TO 24-FOOT PROJECT**

STA. 240+00 THRU STA. 270+00 CUT-A

**PLAN**

---

Scale: AS SHOWN

Drawing no.

10

SHEET 10 OF 15

SAFETY ON THIS JOB  
 DEPENDS ON YOU

NO.	SYMBOL	ZONE

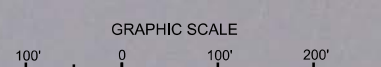
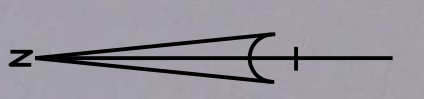
DEPARTMENT OF THE ARMY  
 JACKSONVILLE DISTRICT, CORPS OF ENGINEERS  
 JACKSONVILLE, FLORIDA

Drawn by: **WRM**  
 Check by: **GRL**  
 Date: **AUG - SEP 2015**

Designed by: **WRM**  
 Date: **AUG - SEP 2015**  
 ST PETERSBURG HARBOR - CANAL  
 ST PETERSBURG HARBOR - CANAL  
 ST PETERSBURG HARBOR - CANAL

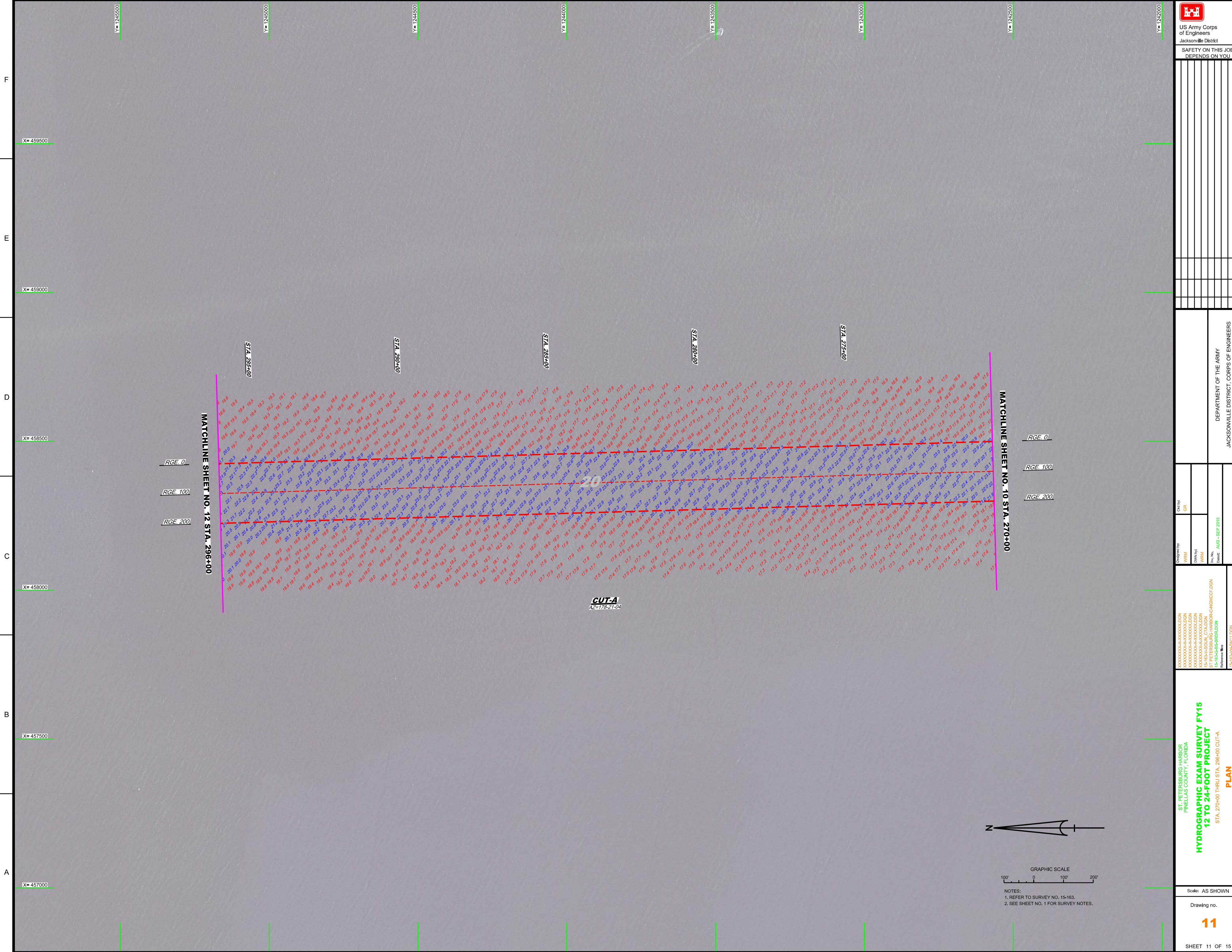
ST. PETERSBURG HARBOR  
 PINELAS COUNTY, FLORIDA  
**HYDROGRAPHIC EXAM SURVEY FY15**  
**12 TO 24-FOOT PROJECT**  
 STA. 270+00 THRU STA. 296+00 CUT-A  
**PLAN**

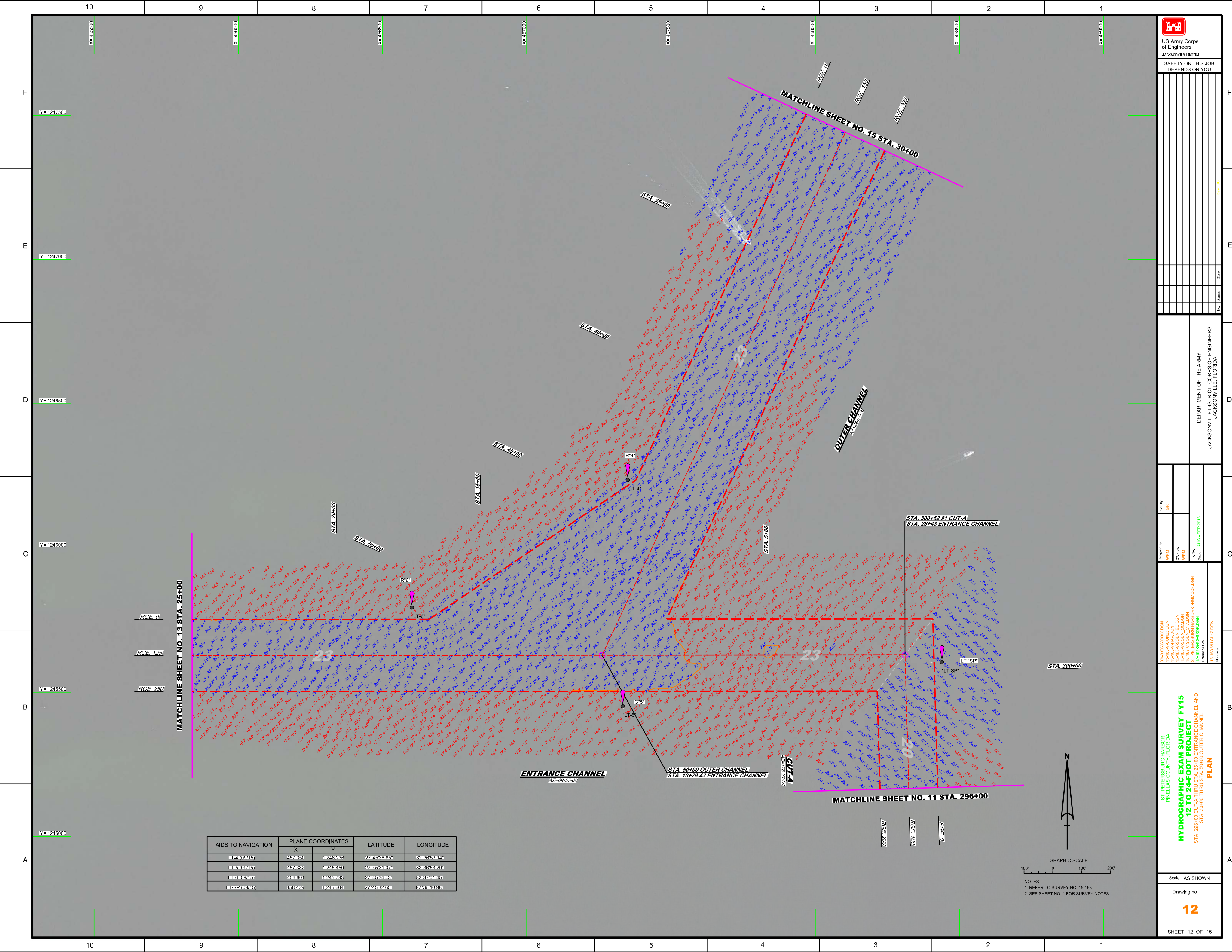
Scale: AS SHOWN  
 Drawing no. **11**  
 SHEET 11 OF 15



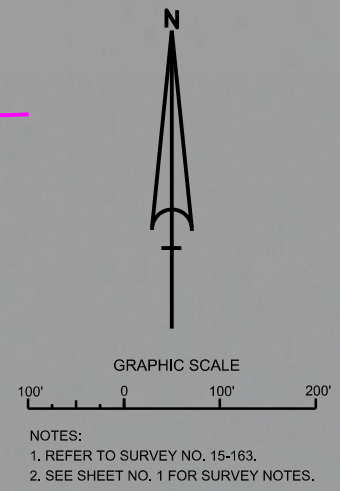
NOTES:  
 1. REFER TO SURVEY NO. 15-163.  
 2. SEE SHEET NO. 1 FOR SURVEY NOTES.

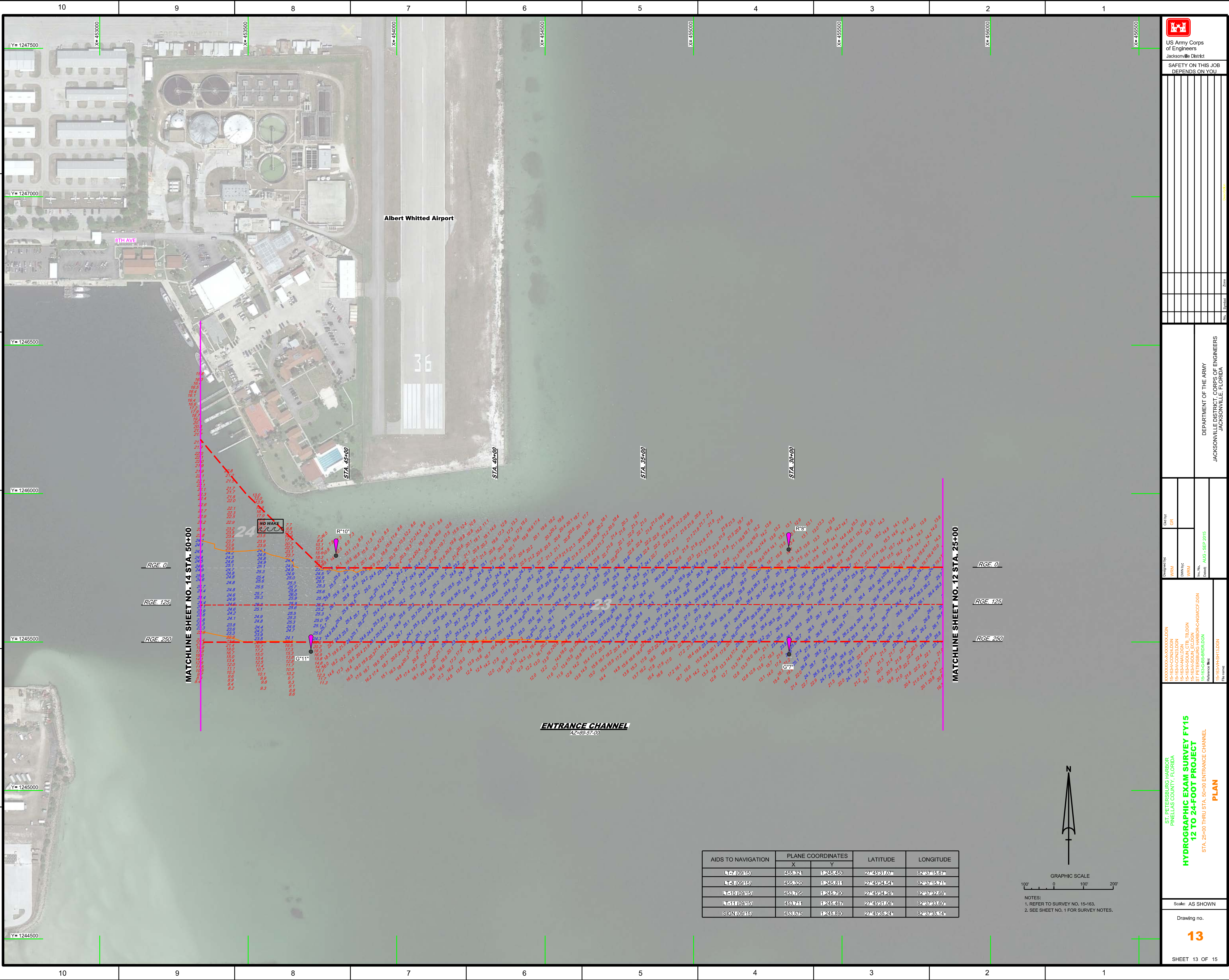
**CUT-A**  
 AZ=178-21-04





AIDS TO NAVIGATION	PLANE COORDINATES		LATITUDE	LONGITUDE
	X	Y		
LT-1 (0915)	457830	1245236	27°45'38.85"	82°36'58.14"
LT-51 (0915)	457832	1245450	27°45'38.07"	82°36'58.29"
LT-53 (0915)	458601	1245793	27°45'22.73"	82°37'01.35"
LT-SP (0915)	458430	1245604	27°45'32.65"	82°38'40.98"



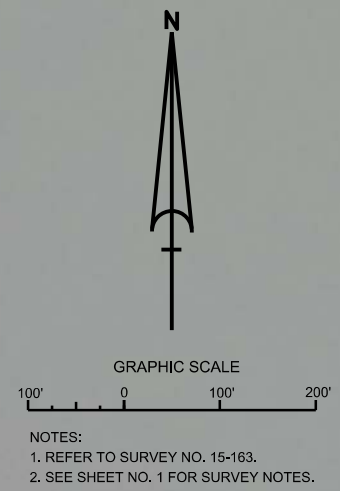


MATCHLINE SHEET NO. 14 STA. 50+00


MATCHLINE SHEET NO. 12 STA. 25+00

**ENTRANCE CHANNEL**  
AZ-89-57-00

AIDS TO NAVIGATION	PLANE COORDINATES		LATITUDE	LONGITUDE
	X	Y		
17 (0945)	455324	1245450	27 45 31.07N	82 37 15.67W
18 (0945)	455320	1245311	27 45 33.54N	82 37 15.71W
10 (0945)	453795	1245760	27 45 34.26N	82 37 32.65W
11 (0945)	453741	1245457	27 45 31.05N	82 37 33.60W
SIGN (0945)	453676	1245680	27 45 33.24N	82 37 35.14W



NOTES:  
1. REFER TO SURVEY NO. 15-163.  
2. SEE SHEET NO. 1 FOR SURVEY NOTES.



US Army Corps of Engineers  
Jacksonville District  
SAFETY ON THIS JOB  
DEPENDS ON YOU

---

DEPARTMENT OF THE ARMY  
JACKSONVILLE DISTRICT, CORPS OF ENGINEERS  
JACKSONVILLE, FLORIDA

---

ST. PETERSBURG HARBOR  
PINELAS COUNTY, FLORIDA  
**HYDROGRAPHIC EXAM SURVEY FY15**  
**12 TO 24-FOOT PROJECT**  
STA. 25+00 THRU STA. 50+00 ENTRANCE CHANNEL  
**PLAN**

---

Scale: AS SHOWN  
Drawing no.  
**13**  
SHEET 13 OF 15



1	2	3	4	5	6	7	8	9	10
1	2	3	4	5	6	7	8	9	10

DEPARTMENT OF THE ARMY  
 JACKSONVILLE DISTRICT CORPS OF ENGINEERS  
 JACKSONVILLE, FLORIDA

Drawn by: GRL Checked by: GRL	Designated by: GRL Approved by: GRL
Date: AUG - SEP 2015 Scale: AS SHOWN	Project: HYDROGRAPHIC EXAM SURVEY FY15 Station: STA. 50+00 ENTRANCE CHANNEL THRU STA. 79+50 BAYBORO

ST. PETERSBURG HARBOR  
 PINELAS COUNTY, FLORIDA  
**HYDROGRAPHIC EXAM SURVEY FY15**  
**12 TO 24-FOOT PROJECT**  
 STA. 50+00 ENTRANCE CHANNEL THRU STA. 79+50 BAYBORO  
**PLAN**

AIDS TO NAVIGATION	PLANE COORDINATES		LATITUDE	LONGITUDE
	X	Y		
DBN-13 (09/15)	452,844	1,245,495	27°45'31.27"	82°37'43.25"
LT-NN (09/15)	452,155	1,245,923	27°45'35.49"	82°37'50.94"
SIGN (09/15)	452,896	1,245,460	27°45'30.94"	82°37'42.86"

