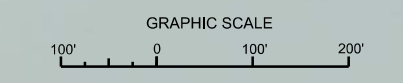


| AIDS TO NAVIGATION | PLANE COORDINATES |           | LATITUDE     | LONGITUDE    |
|--------------------|-------------------|-----------|--------------|--------------|
|                    | X                 | Y         |              |              |
| DBN-11 (09/15)     | 393,523           | 1,316,564 | 27°57'11.53" | 82°48'48.77" |
| LT-12 (09/15)      | 394,655           | 1,318,492 | 27°57'30.68" | 82°48'36.18" |
| DBN-13 (09/15)     | 394,817           | 1,319,062 | 27°57'36.34" | 82°48'34.53" |



NOTES:  
1. REFER TO SURVEY NO. 15-154.  
2. SEE SHEET NO. 1 FOR SURVEY NOTES.







P.I. STA. 39+95.42 CUT P-37  
 P.I. STA. 0+00 CUT P-38A

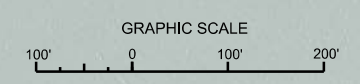
MATCHLINE SHEET NO. 058 STA. 9+00

MATCHLINE SHEET NO. 056 STA. 16+00

CUT P-38A

CUT P-37

| AIDS TO NAVIGATION | PLANE COORDINATES |           | LATITUDE     | LONGITUDE    |
|--------------------|-------------------|-----------|--------------|--------------|
|                    | X                 | Y         |              |              |
| DBN-17 (09/15)     | 396,980           | 1,325,950 | 27°58'44.68" | 82°48'10.91" |
| LT-18 (09/15)      | 397,595           | 1,328,275 | 27°59'07.74" | 82°48'04.23" |
| DBN-19 (09/15)     | 397,465           | 1,328,246 | 27°59'07.45" | 82°48'05.67" |



NOTES:  
 1. REFER TO SURVEY NO. 15-154.  
 2. SEE SHEET NO. 1 FOR SURVEY NOTES.





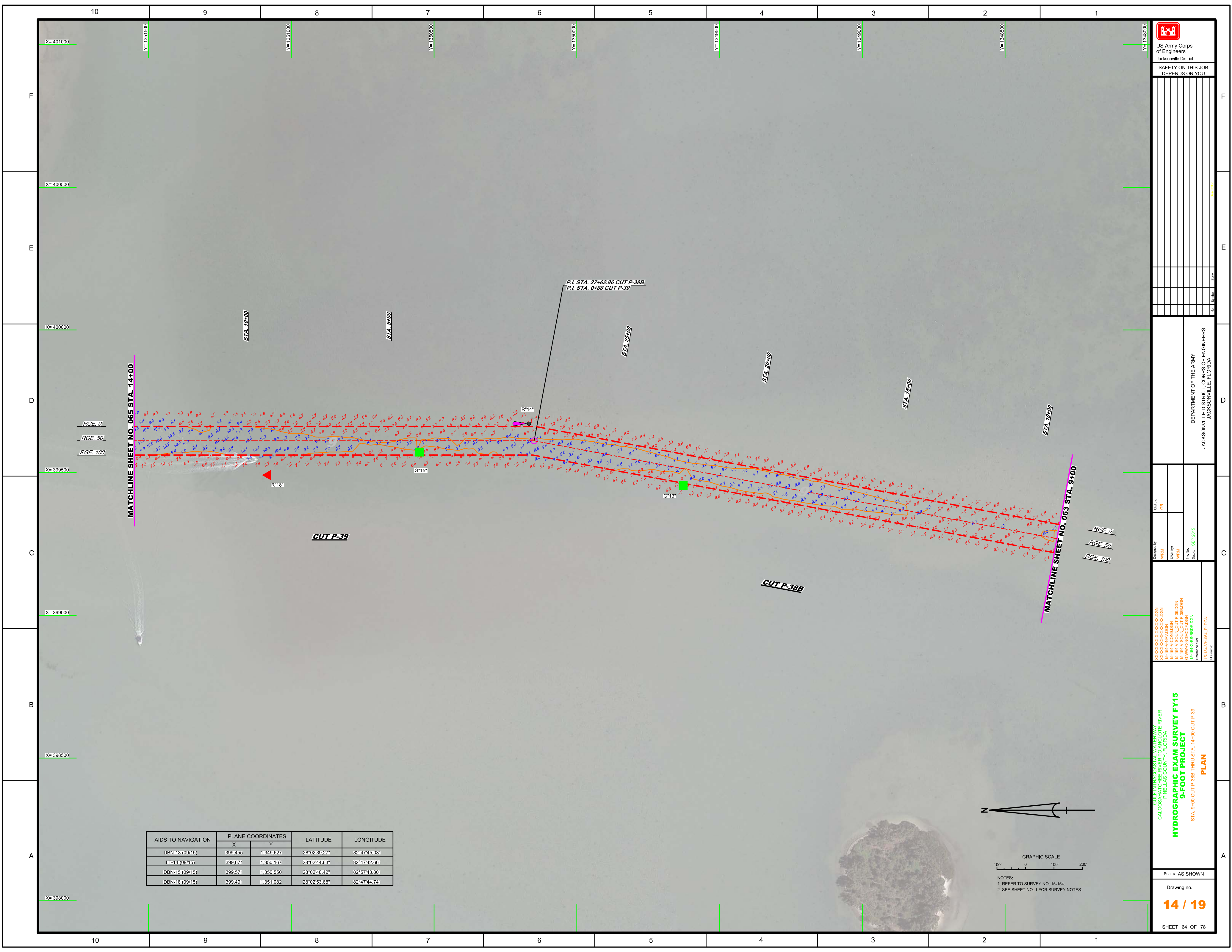













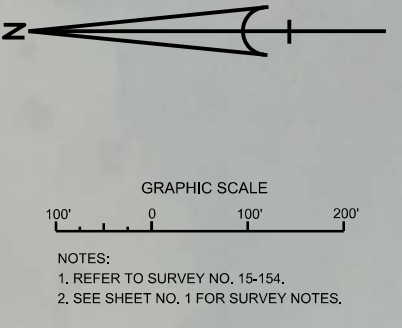

 US Army Corps of Engineers  
 Jacksonville District  
 SAFETY ON THIS JOB  
 DEPENDS ON YOU

|              |                   |
|--------------|-------------------|
| Checked by:  | GR                |
| Designed by: | WRM               |
| Drawn by:    | WRM               |
| File No.:    | 15-154-HRBL_FLDGN |
| Date:        | SEP 2015          |

GULF INTRACOSTAL WATERWAY TO THE RIVER  
 CALOOSAHATCHEE RIVER  
 PINELLAS COUNTY, FLORIDA  
**HYDROGRAPHIC EXAM SURVEY FY15**  
**9-FOOT PROJECT**  
 STA. 9+00 CUT P-388 THRU STA. 14+00 CUT P-39  
**PLAN**

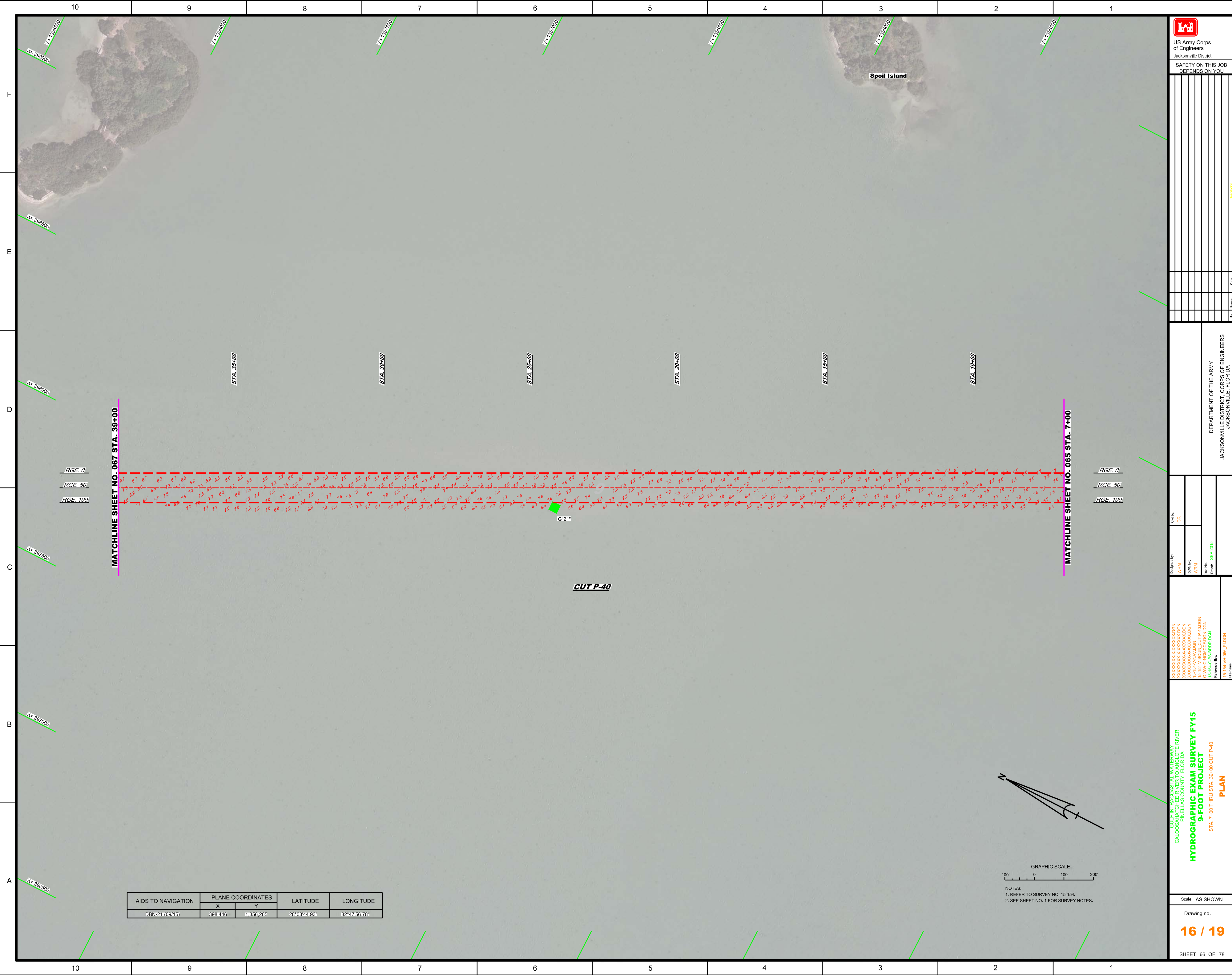
Scale: AS SHOWN  
 Drawing no.  
**14 / 19**  
 SHEET 64 OF 78

| AIDS TO NAVIGATION | PLANE COORDINATES |           | LATITUDE     | LONGITUDE    |
|--------------------|-------------------|-----------|--------------|--------------|
|                    | X                 | Y         |              |              |
| DBN-13 (09/15)     | 399,455           | 1,349,627 | 28°02'39.27" | 82°47'45.03" |
| LT-14 (09/15)      | 399,671           | 1,350,167 | 28°02'44.63" | 82°47'42.66" |
| DBN-15 (09/15)     | 399,571           | 1,350,550 | 28°02'48.42" | 82°47'43.80" |
| DBN-18 (09/15)     | 399,491           | 1,351,082 | 28°02'53.68" | 82°47'44.74" |



NOTES:  
 1. REFER TO SURVEY NO. 15-154.  
 2. SEE SHEET NO. 1 FOR SURVEY NOTES.





| Rev. | Description | Date |
|------|-------------|------|
|      |             |      |
|      |             |      |
|      |             |      |
|      |             |      |
|      |             |      |
|      |             |      |
|      |             |      |
|      |             |      |
|      |             |      |
|      |             |      |
|      |             |      |
|      |             |      |
|      |             |      |

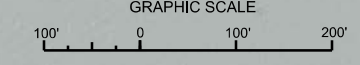
DEPARTMENT OF THE ARMY  
JACKSONVILLE DISTRICT, CORPS OF ENGINEERS  
JACKSONVILLE, FLORIDA

Checked By: GRJ  
Designed By: WRM  
Drawn By: WRM  
File No: 15-154-0000  
Date: SEP 2015

XXXXXXXXXXXXXXXXXXXX.DGN  
XXXXXXXXXXXXXXXXXXXX.DGN  
XXXXXXXXXXXXXXXXXXXX.DGN  
15-154-0000.DGN  
BMW-C-5-154-0000.DGN  
15-154-0000-154-0000.DGN  
15-154-0000-154-0000.DGN  
Reference files:  
15-154-0000-154-0000.DGN

GULF INTRACOASTAL WATERWAY  
CALOOSAHATCHEE RIVER  
PINELLAS COUNTY, FLORIDA  
**HYDROGRAPHIC EXAM SURVEY FY15  
9-FOOT PROJECT**  
STA. 7+00 THRU STA. 39+00 CUT P-40  
**PLAN**

| AIDS TO NAVIGATION | PLANE COORDINATES |           | LATITUDE     | LONGITUDE    |
|--------------------|-------------------|-----------|--------------|--------------|
|                    | X                 | Y         |              |              |
| DBN-21 (09/15)     | 398,446           | 1,356,265 | 28°03'44.93" | 82°47'56.78" |



NOTES:  
1. REFER TO SURVEY NO. 15-154.  
2. SEE SHEET NO. 1 FOR SURVEY NOTES.







