

PORT EVERGLADES HARBOR BROWARD COUNTY, FLORIDA EXAMINATION SURVEY FY15 31, 36, 37, 42 AND 45-FOOT PROJECT

SURVEY NOTES

- REFER TO SURVEY NO. 15-128.
 - ELEVATIONS ARE IN FEET AND TENTHS AND REFER TO THE NOAA REPORTED MEAN LOWER LOW WATER (MLLW) TIDAL DATUM, 1983-2001 EPOCH.
 - TIDAL REDUCTIONS WERE OBTAINED UTILIZING A REAL-TIME KINEMATIC (RTK) GPS AND REFERENCED TO MLLW UTILIZING A HYPACK KINEMATIC TIDE DATUM (KTD) MODEL. KTD FILE NAME IS: "PALMBEACH-BROWARD-20140529.KTD".
 - ALL ELEVATIONS ARE BELOW THE CHART DATUM UNLESS PRECEDED BY A (+) SIGN.
 - PLANE COORDINATES ARE BASED ON THE TRANSVERSE MERCATOR PROJECTION FOR THE EAST ZONE OF FLORIDA AND REFERENCED TO NORTH AMERICAN DATUM OF 1983 (NAD83).
 - ALL STATIONING REFERS TO THE CENTERLINE OF THE CHANNEL.
 - THIS SURVEY WAS PERFORMED USING REAL-TIME KINEMATIC GPS POSITIONING WITH THE FOLLOWING REFERENCE BASE LOCATION:
REFERENCE BASE LOCATED AT "USN NORTH RANGE 2 NO. 5" (PID: BBCB27)
TIDE STAFF SET IN JOHN LLOYD STATE PARK FROM NOAA TDAL MONUMENT "NGS NO2 1973" (OPUS PID: AD5884)
 - DEPTHS DEPICTED BY THIS SURVEY ARE REFERENCED TO MLLW, TIDAL 1983-2001, AS REPORTED BY THE NATIONAL OCEANIC AND ATMOSPHERIC ADMINISTRATION (NOAA). NOAA'S VDATUM MODEL WAS USED AND CALIBRATED TO THE PUBLISHED MLLW HEIGHTS OF THE BENCH MARKS ASSOCIATED WITH THE TIDE GAGE SITE SPECIFIED BELOW:
NOAA TIDAL STATION 872-2957, NORTH DANIA SOUND FOR ENTIRE PROJECT
 - VERTICAL MEASUREMENTS WERE MADE USING A R2SONIC 2024 MULTIBEAM SYSTEM OPERATING AT 240 KHZ. ALL SOUNDINGS SHOWN ARE IN HIGH FREQUENCY.
- | VESSEL | DATE OF SURVEY | CUT |
|---------------|----------------|------------------------------------|
| SV FLORIDA II | 04 JUN 2015 | MAIN, NORTH & SOUTH TURNING BASINS |
| SV FLORIDA II | 05-07 JUN 2015 | ENTRANCE CHANNEL, SP1, SP2, SP3 |
- AIDS TO NAVIGATION WERE LOCATED DURING THIS SURVEY.
 - THE INFORMATION DEPICTED ON THIS MAP REPRESENTS THE RESULTS OF SURVEYS MADE ON THE DATES INDICATED ABOVE AND CAN ONLY BE CONSIDERED AS INDICATING THE GENERAL CONDITIONS AT THAT TIME. THIS CHART IS SOLELY FOR THE DISTRIBUTION OF AVAILABLE DEPTHS AT THE TIME OF THE SURVEY.
 - SURVEY ACCURACY PERFORMANCE STANDARDS, QUALITY CONTROL, AND QUALITY ASSURANCE REQUIREMENTS WERE FOLLOWED DURING THIS SURVEY IN ACCORDANCE WITH USACE EM 1110-2-1003, HYDROGRAPHIC SURVEYING, 30 NOV 13.

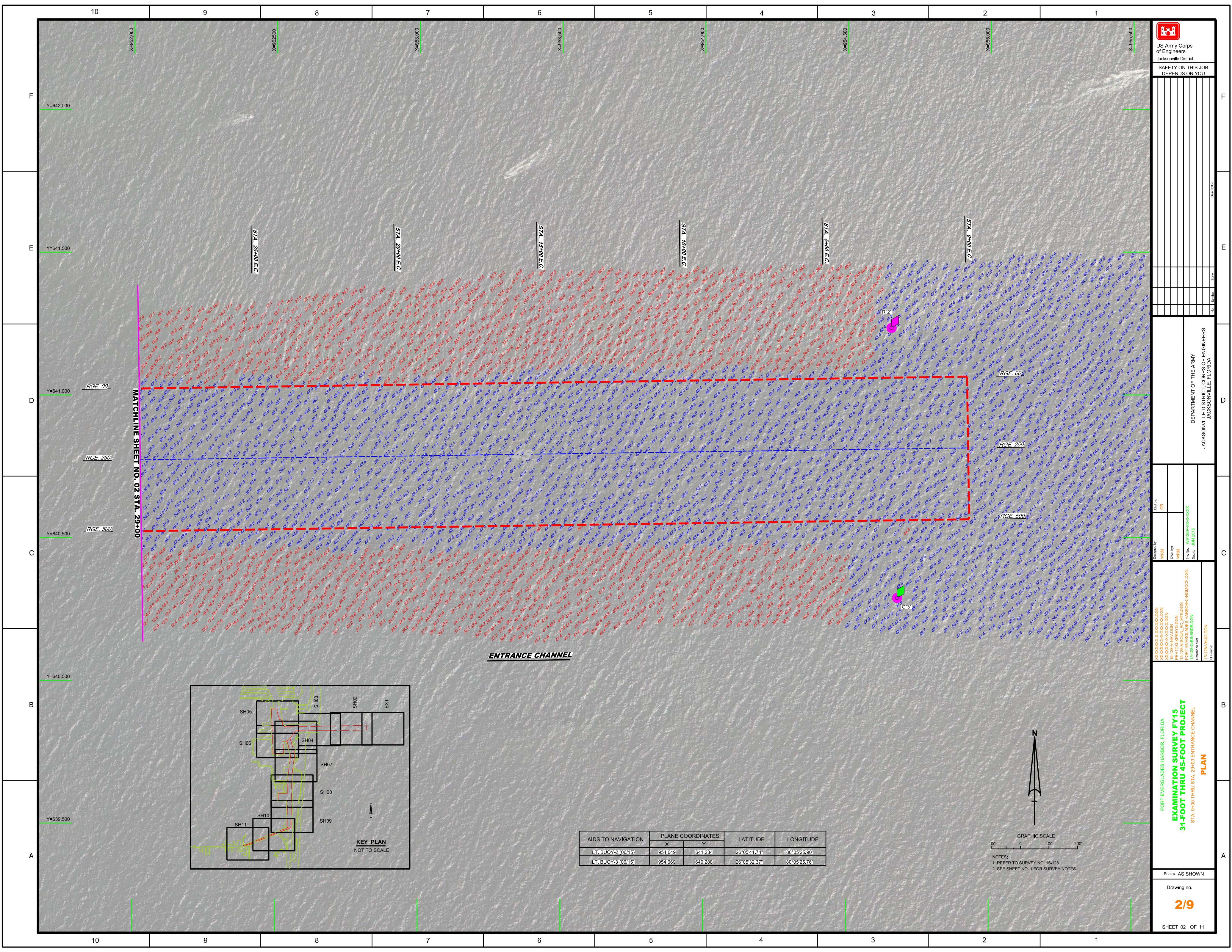
LEGEND	
	MONUMENT
	LIGHTED BEACON
	GREEN DAY BEACON
	RED DAY BEACON
	RED LIGHTED BUOY
	GREEN LIGHTED BUOY
	CAN BUOY
	NUN BUOY
	TIDE STAFF
8	PROJECT DEPTH

US Army Corps of Engineers
Jacksonville District
SAFETY ON THIS JOB DEPENDS ON YOU

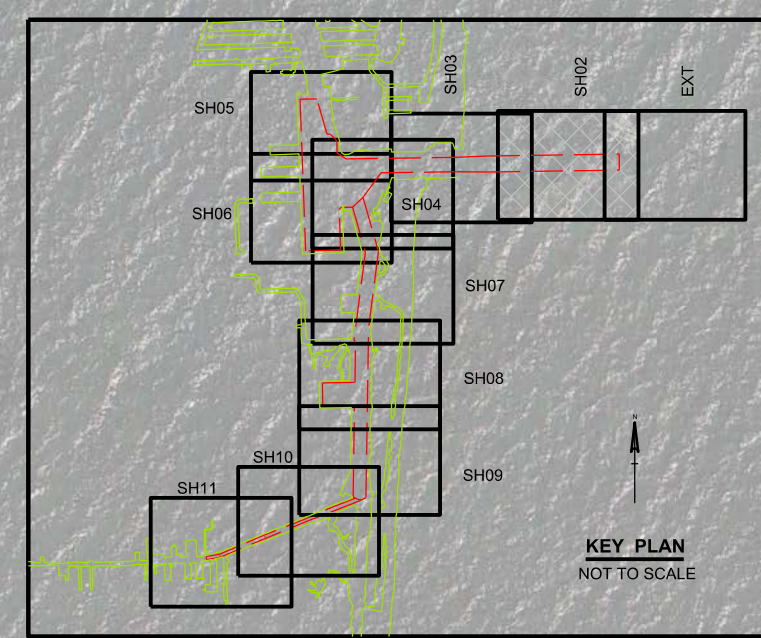
DEPARTMENT OF THE ARMY
JACKSONVILLE DISTRICT, CORPS OF ENGINEERS
JACKSONVILLE, FLORIDA

PORT EVERGLADES HARBOR, FLORIDA
EXAMINATION SURVEY FY15
31-FOOT THRU 45-FOOT PROJECT
INDEX, LOCATION AND VICINITY MAP

Scale: AS SHOWN
Drawing no. **1/9**
SHEET 01 OF 11

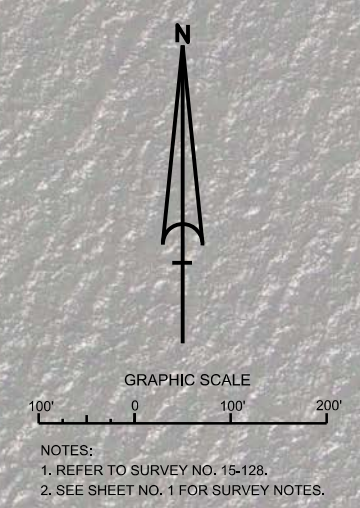


MATCHLINE SHEET NO. 02 STA. 29+00




ENTRANCE CHANNEL

AIDS TO NAVIGATION	PLANE COORDINATES		LATITUDE	LONGITUDE
	X	Y		
LT. BUOY-2 (06/15)	954,649	641,234	26°05'41.74"	80°05'25.90"
LT. BUOY-3 (08/15)	954,663	640,288	26°05'32.37"	80°05'25.76"



NOTES:
 1. REFER TO SURVEY NO. 15-128.
 2. SEE SHEET NO. 1 FOR SURVEY NOTES.



US Army Corps of Engineers
Jacksonville District

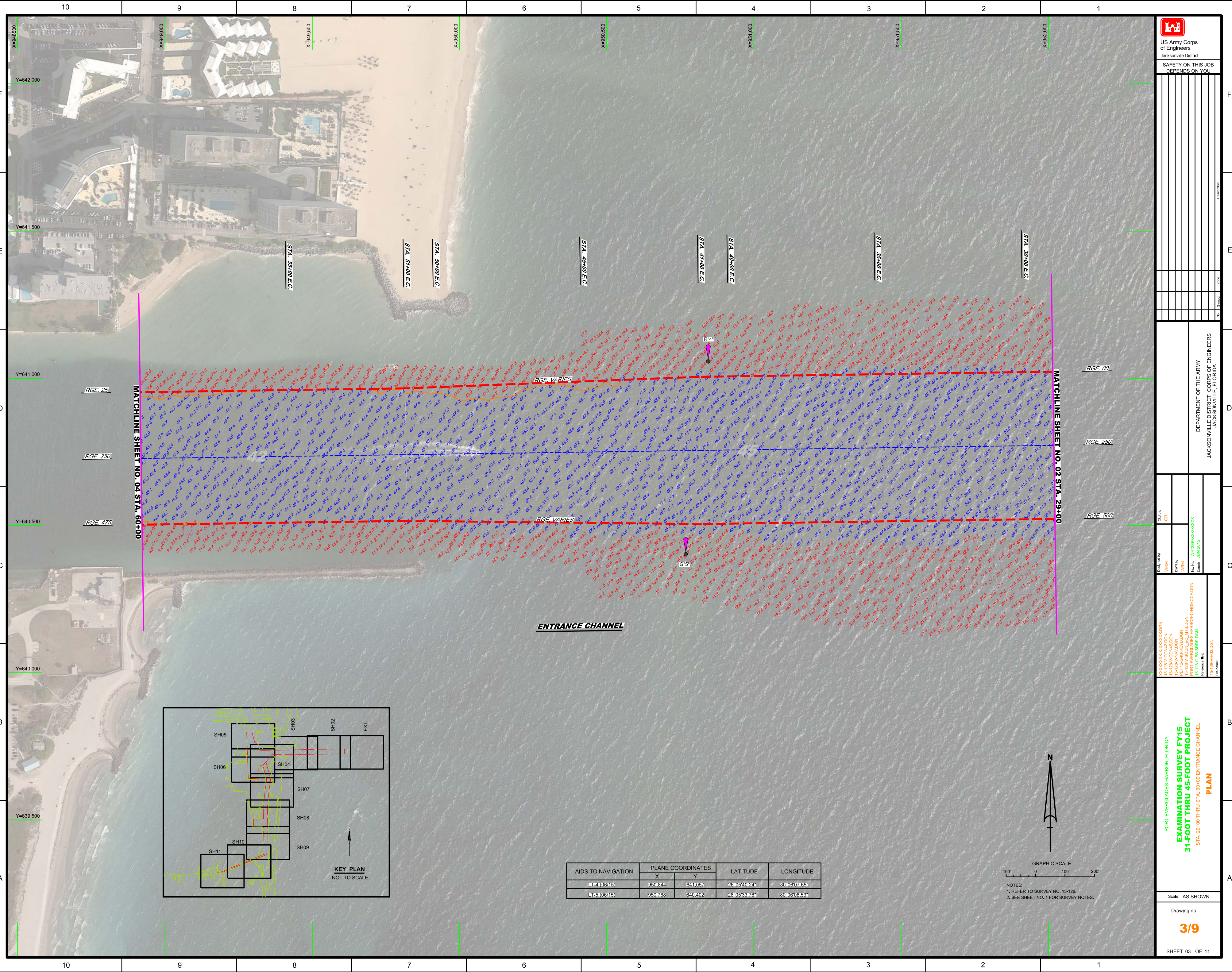
SAFETY ON THIS JOB
DEPENDS ON YOU

DEPARTMENT OF THE ARMY
 JACKSONVILLE DISTRICT, CORPS OF ENGINEERS
 JACKSONVILLE, FLORIDA

Drawn by: GR
 Checked by: GR
 Date: JUN 2015

PORT EVERGLADES HARBOR, FLORIDA
EXAMINATION SURVEY FY15
31-FOOT THRU 45-FOOT PROJECT
 STA. 0+00 THRU STA. 29+00 ENTRANCE CHANNEL
PLAN

Scale: AS SHOWN
 Drawing no.
2/9
 SHEET 02 OF 11



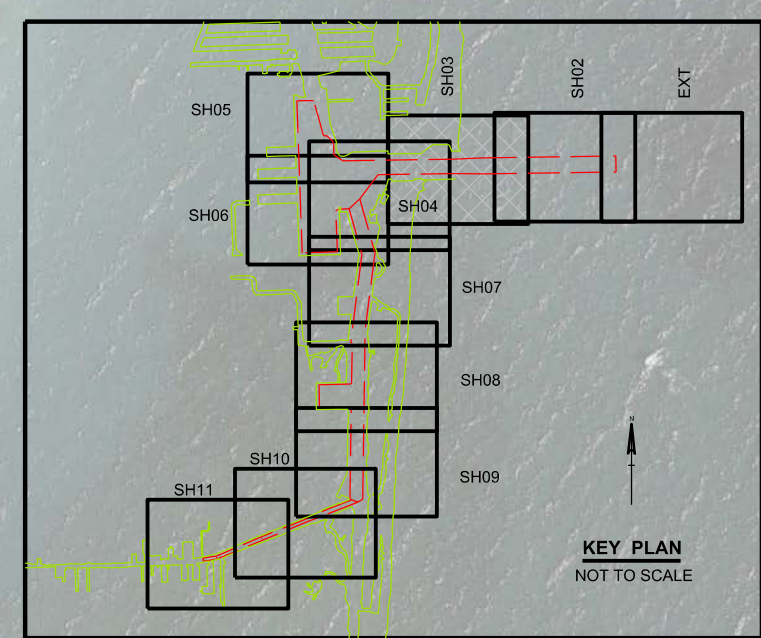
MATCHLINE SHEET NO. 04 STA. 60+00

MATCHLINE SHEET NO. 02 STA. 29+00

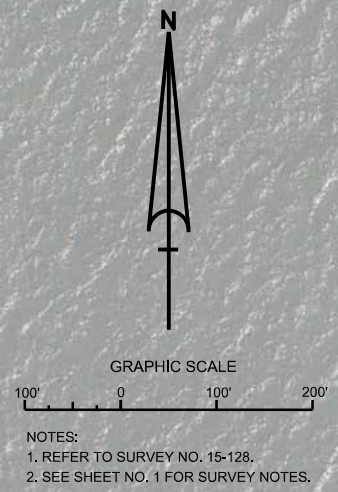
ENTRANCE CHANNEL

RGE VARIES

RGE VARIES



AIDS TO NAVIGATION	PLANE COORDINATES		LATITUDE	LONGITUDE
	X	Y		
LT-4 (06/15)	950.844	641.057	26°05'40.24"	80°06'07.65"
LT-5 (06/15)	950.788	640.402	26°05'33.76"	80°06'08.53"

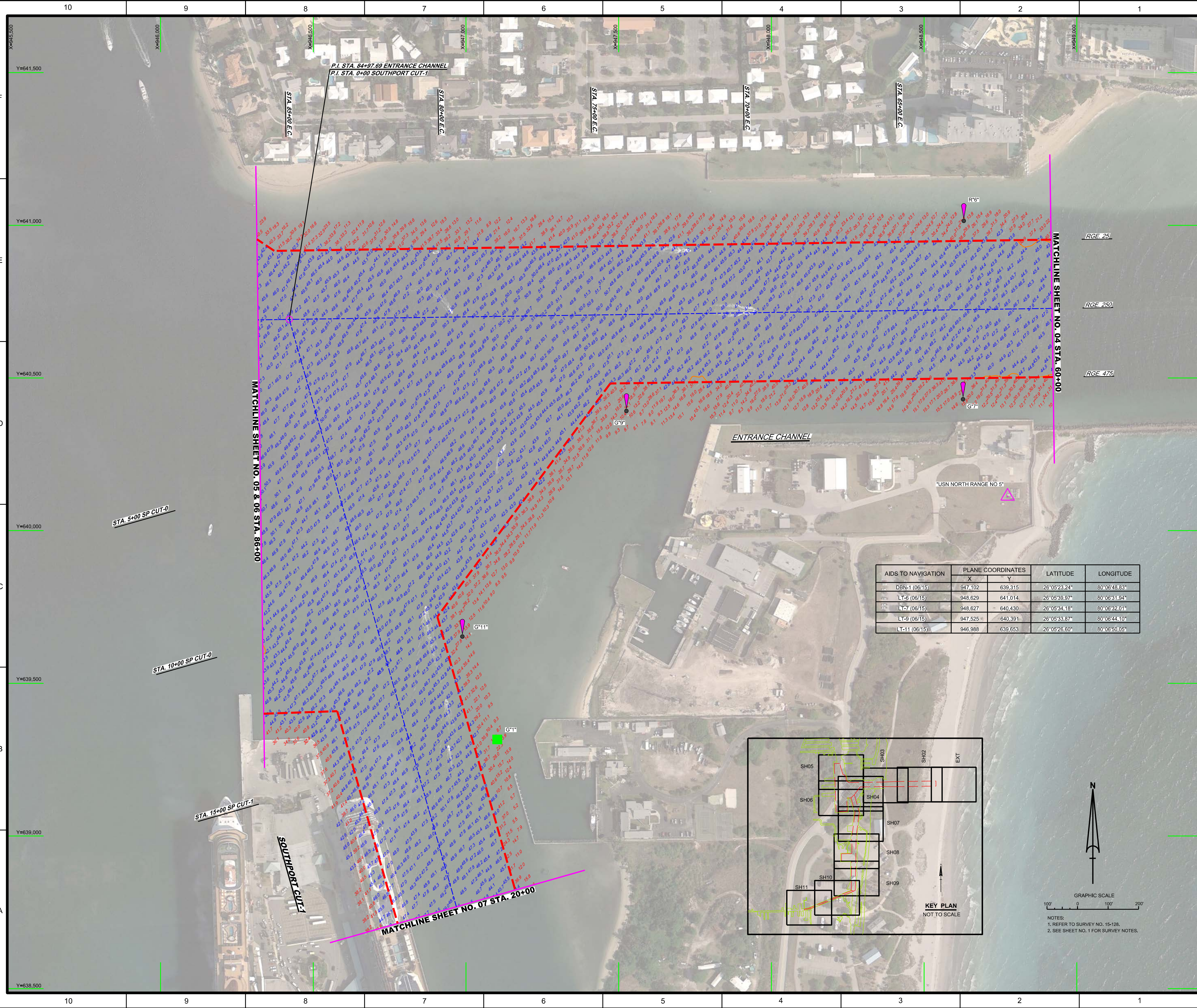


US Army Corps of Engineers
Jacksonville District
SAFETY ON THIS JOB
DEPENDS ON YOU

DEPARTMENT OF THE ARMY
JACKSONVILLE DISTRICT, CORPS OF ENGINEERS
JACKSONVILLE, FLORIDA

PORT EVERGLADES HARBOR, FLORIDA
EXAMINATION SURVEY FY15
31-FOOT THRU 45-FOOT PROJECT
STA. 60+00 THRU STA. 86+00 ENTRANCE CHANNEL &
STA. 0+00 THRU STA. 20+00 SOUTHPORT CUT-1
PLAN

Scale: AS SHOWN
Drawing no.
4/9
SHEET 04 OF 11



P.I. STA. 84+97.69 ENTRANCE CHANNEL
P.I. STA. 0+00 SOUTHPORT CUT-1

STA. 55+00 E.C.

STA. 80+00 E.C.

STA. 20+00 E.C.

STA. 20+00 E.C.

STA. 55+00 E.C.

MATCHLINE SHEET NO. 04 STA. 60+00

MATCHLINE SHEET NO. 05 & 06 STA. 86+00

STA. 5+00 SP CUT-0

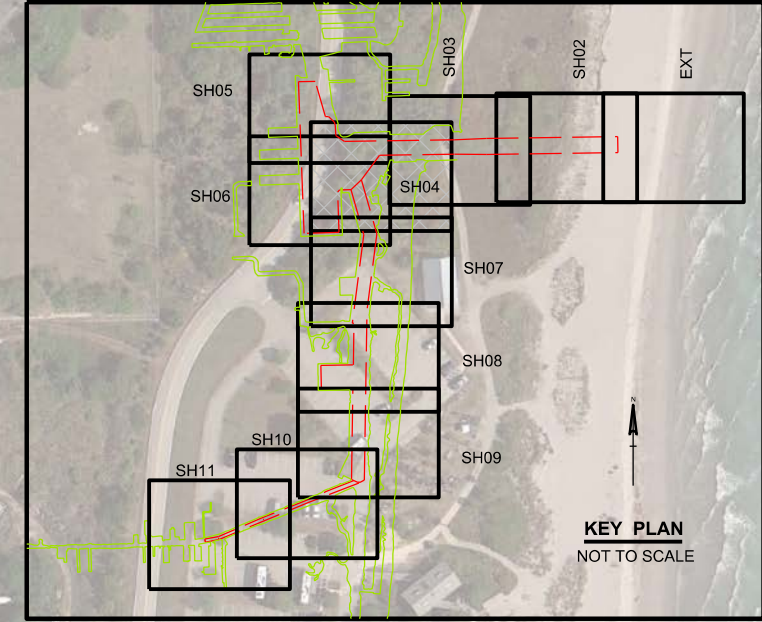
STA. 10+00 SP CUT-0

STA. 15+00 SP CUT-1

SOUTHPORT CUT-1

ENTRANCE CHANNEL

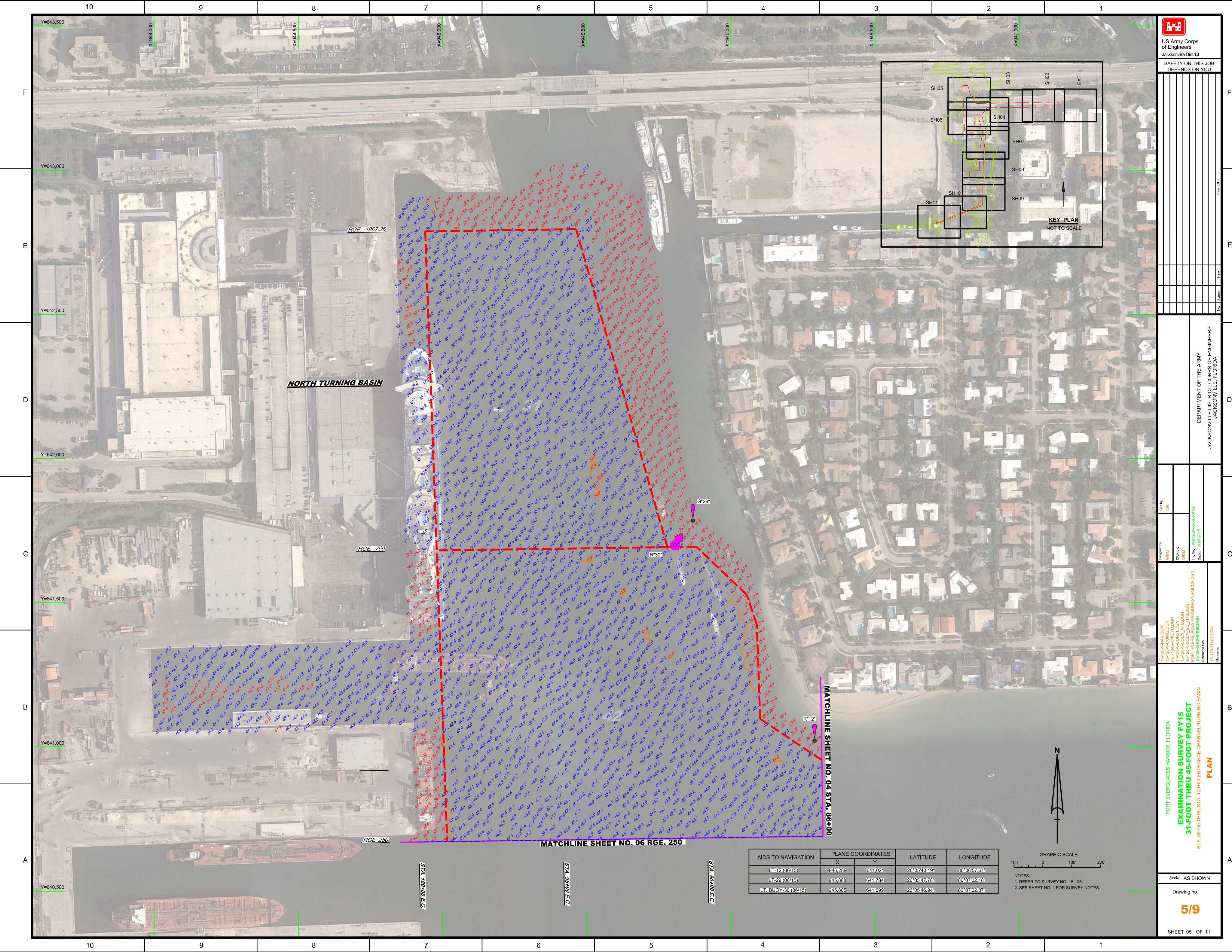
USN NORTH RANGE NO. 5



KEY PLAN
NOT TO SCALE

GRAPHIC SCALE
100' 0 100' 200'

NOTES:
1. REFER TO SURVEY NO. 15-128.
2. SEE SHEET NO. 1 FOR SURVEY NOTES.



US Army Corps of Engineers Jacksonville District	
SAFETY ON THIS JOB DEPENDS ON YOU	

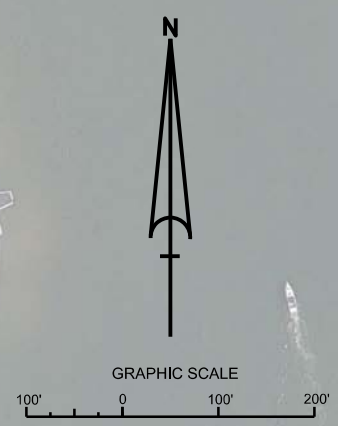
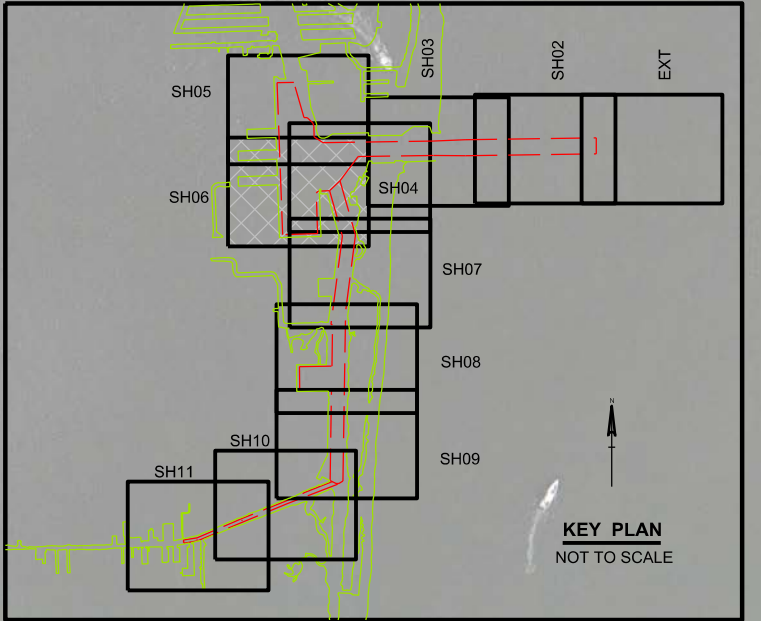
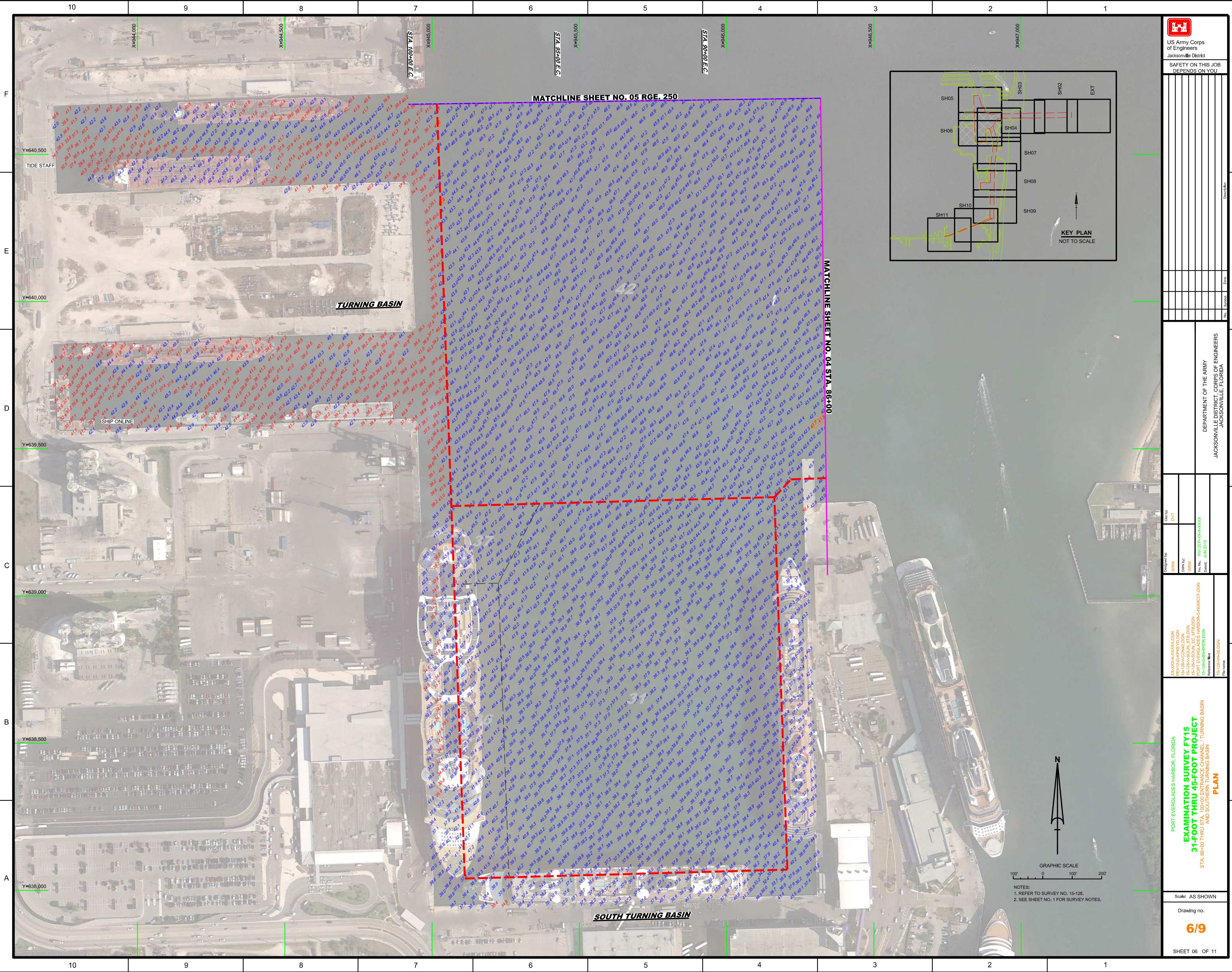
DEPARTMENT OF THE ARMY
JACKSONVILLE DISTRICT, CORPS OF ENGINEERS
JACKSONVILLE, FLORIDA

Checked by: GR	Drawn by: GR
Designed by: GR	Reference files:
	15-128A-MAV.DGN
	15-128A-CO-CON.DGN
	15-128A-CON-1.DGN
	15-128A-SOIL_VIB.DGN
	PORT EVERGLADES HARBOR/06-PLAN/06.DGN
	15-128A-EB-SR-DGN
	15-128A-HUB.DGN

PORT EVERGLADES HARBOR, FLORIDA
EXAMINATION SURVEY FY15
31-FOOT THRU 45-FOOT PROJECT
STA. 86+00 THRU STA. 100+00 ENTRANCE CHANNEL/TURNING BASIN
PLAN
Scale: AS SHOWN
Drawing no. **5/9**
SHEET 05 OF 11

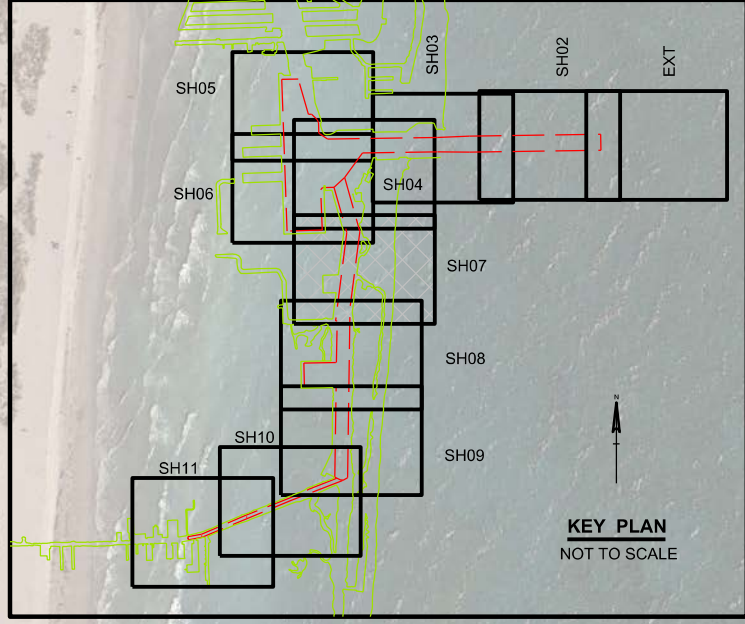
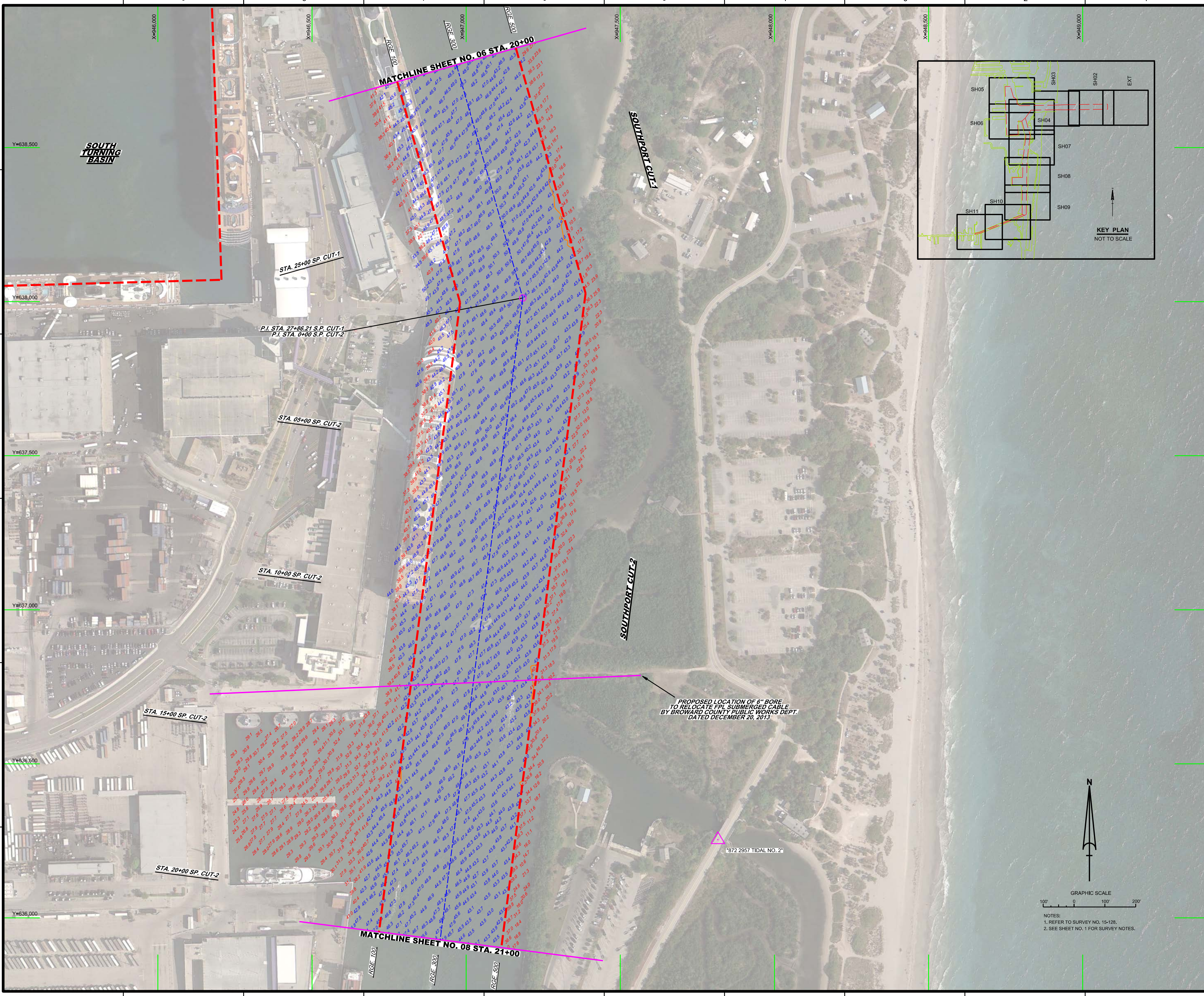
AIDS TO NAVIGATION	PLANE COORDINATES		LATITUDE	LONGITUDE
	X	Y		
LT-12 (09/15)	945289	641104	26°09'49.18"	80°07'02.61"
LT-29 (09/15)	945866	641764	26°09'47.16"	80°07'02.78"
LT BUOY-30 (06/15)	945805	641699	26°09'46.94"	80°07'02.87"

NOTES:
1. REFER TO SURVEY NO. 15-128.
2. SEE SHEET NO. 1 FOR SURVEY NOTES.



NOTES:
 1. REFER TO SURVEY NO. 15-128.
 2. SEE SHEET NO. 1 FOR SURVEY NOTES.

 US Army Corps of Engineers Jacksonville District SAFETY ON THIS JOB DEPENDS ON YOU	
Call By: DVT Designed By: WRM Drawn By: WRM Check By: WRM Date: JUN 2015	15-128-XXXXXX.DGN 15-128-ACON42.DGN 15-128-ASOIA_SIB.DGN 15-128-EGS-HARBOR-CHANN.DGN 15-128-EGS-SOUTH-TURNING-BASIN.DGN 15-128-EGS-SOUTH-TURNING-BASIN.DGN 15-128-PRR.DGN
PORT EVERGLADES HARBOR, FLORIDA EXAMINATION SURVEY FY15 31-FOOT THRU 45-FOOT PROJECT STA. 08+00 THRU STA. 100+00 ENTRANCE CHANNEL / TURNING BASIN AND SOUTHERN TURNING BASIN PLAN	
DEPARTMENT OF THE ARMY JACKSONVILLE DISTRICT, CORPS OF ENGINEERS JACKSONVILLE, FLORIDA	
Scale: AS SHOWN Drawing no. 6/9 SHEET 06 OF 11	Date: _____ Name: _____ Title: _____

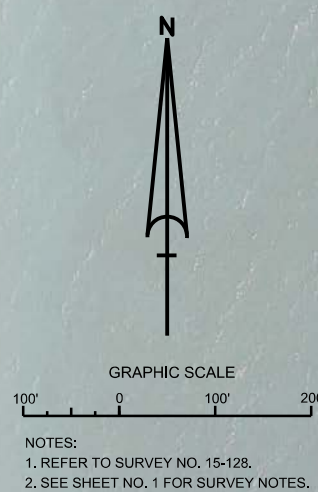
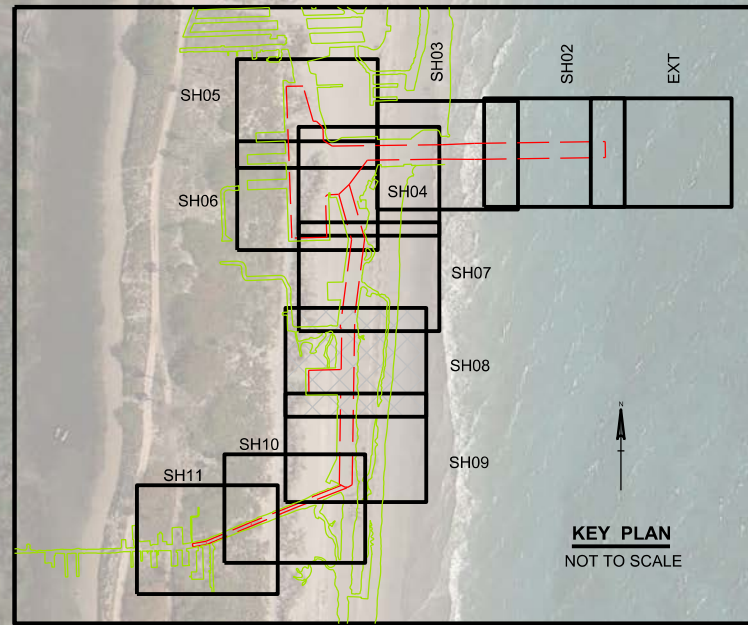
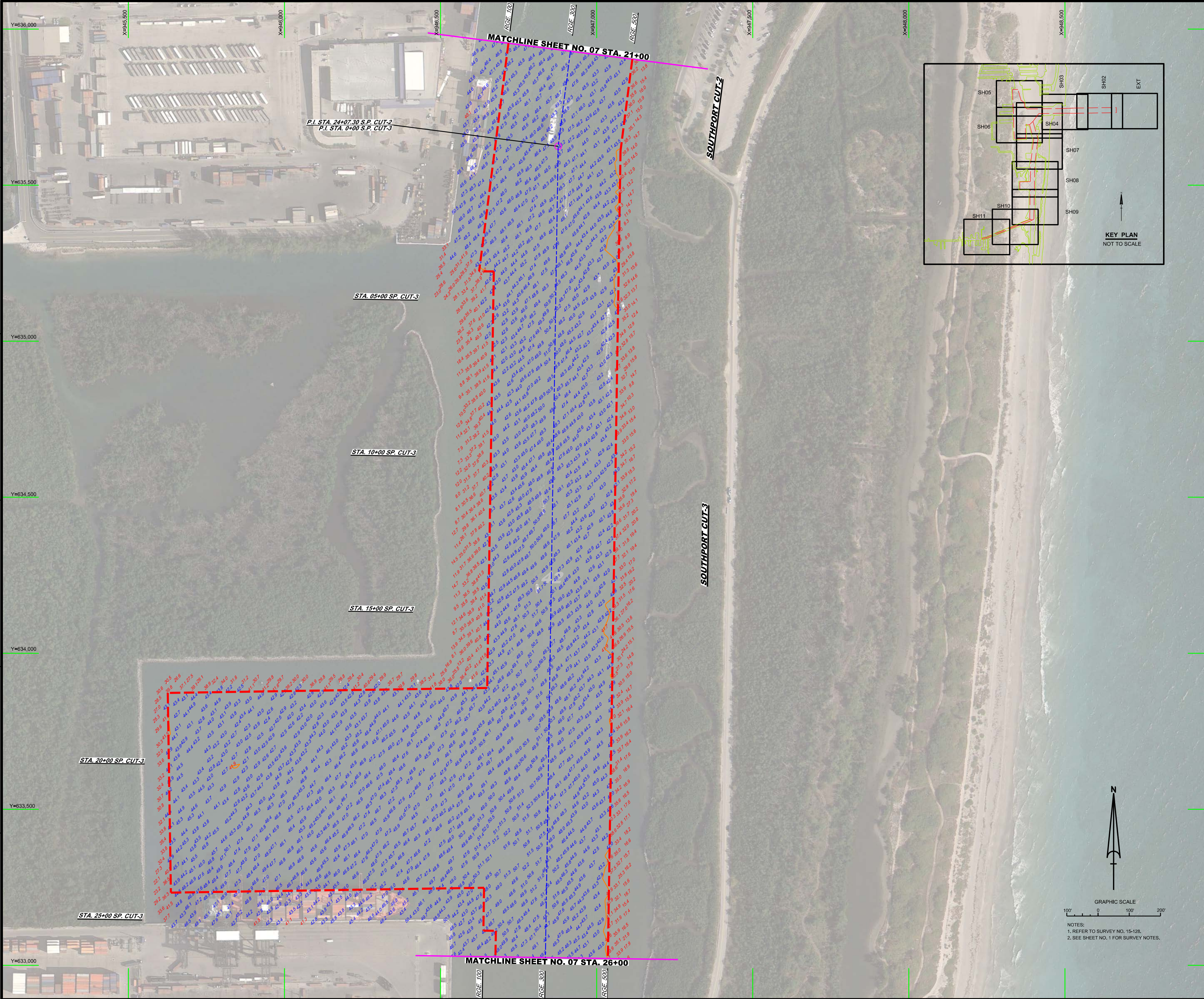


US Army Corps of Engineers Jacksonville District SAFETY ON THIS JOB DEPENDS ON YOU	

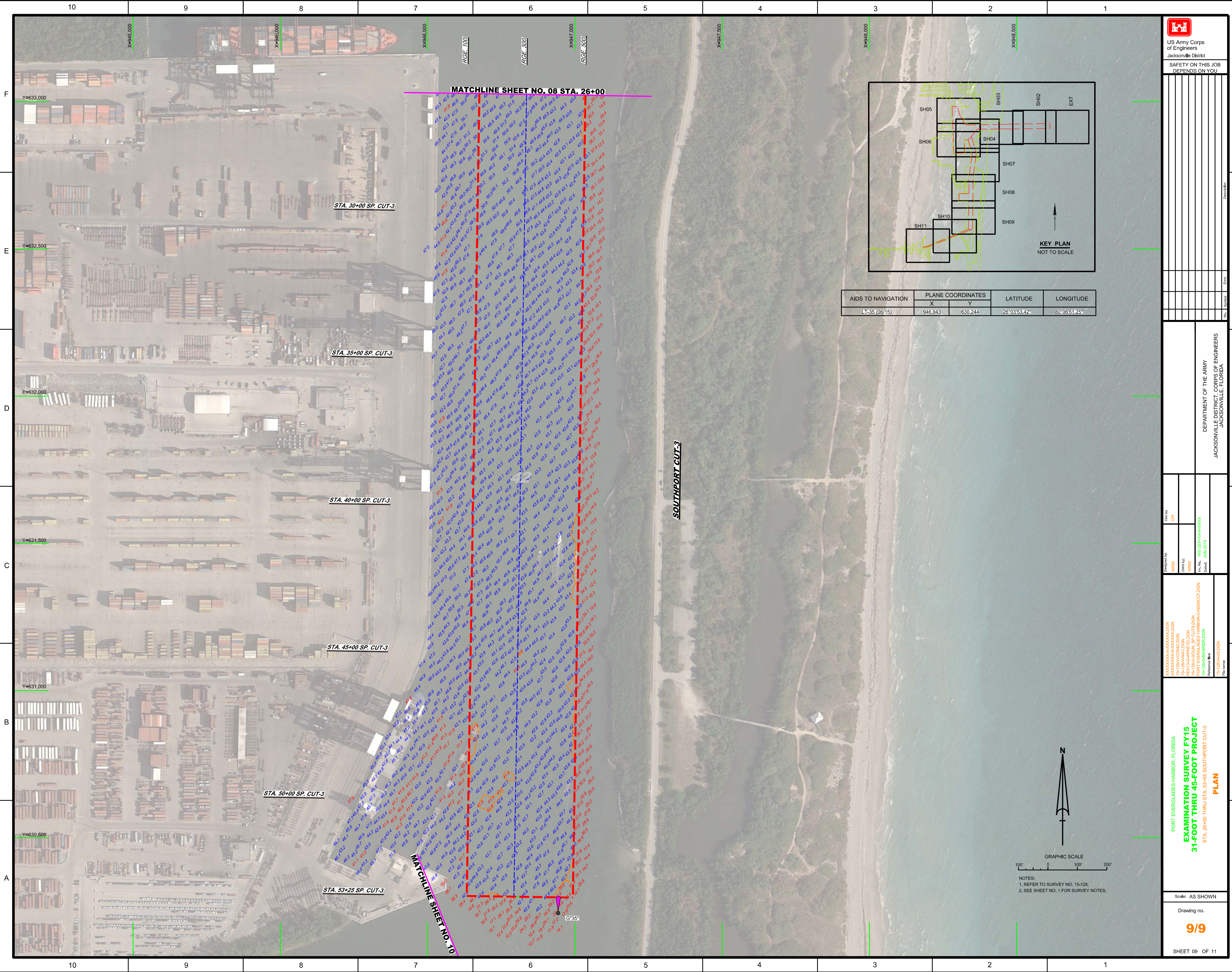
DEPARTMENT OF THE ARMY
 JACKSONVILLE DISTRICT, CORPS OF ENGINEERS
 JACKSONVILLE, FLORIDA

Checked by: GR Date:	Designed by: WRM Date:
Drawn by: WRM Date:	File No: WR225A-66-0000-000 Date: JUN 2015
XXXXXXXXXXXXXXXXXXXX.DGN C:\XXXXXXXXXXXXXXXXXX.DGN PORT EVERGLADES HARBOUR CANALS.DGN PORT EVERGLADES HARBOUR CANALS.DGN PORT EVERGLADES HARBOUR CANALS.DGN PORT EVERGLADES HARBOUR CANALS.DGN	

PORT EVERGLADES HARBOR, FLORIDA
EXAMINATION SURVEY FY15
31-FOOT THRU 45-FOOT PROJECT
 STA. 20+00 SOUTHPORT CUT-1 THRU STA. 21+00 SOUTHPORT CUT-2
PLAN
 Scale: AS SHOWN
 Drawing no. **7/9**
 SHEET 07 OF 11



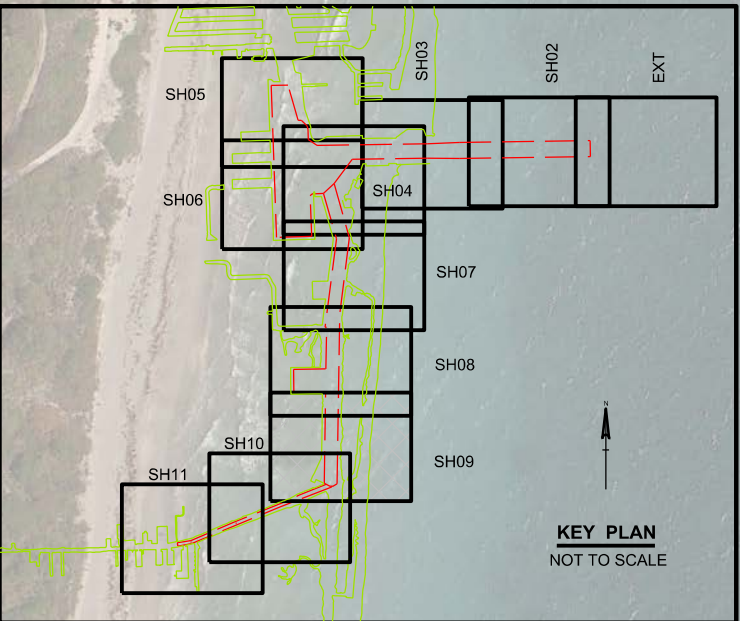
<p>US Army Corps of Engineers Jacksonville District</p>	
<p>SAFETY ON THIS JOB DEPENDS ON YOU</p>	
<p>Drawn by:</p>	<p>Checked by:</p>
<p>Designed by:</p>	<p>Reviewed by:</p>
<p>15-128-ACON42.DGN 15-128-APR15.DGN 15-128-BS-SR10.DGN 15-128-BS-SR10.DGN</p>	<p>15-128-ACON42.DGN 15-128-APR15.DGN 15-128-BS-SR10.DGN 15-128-BS-SR10.DGN</p>
<p>PORT EVERGLADES HARBOR, FLORIDA EXAMINATION SURVEY FY15 31-FOOT THRU 45-FOOT PROJECT STA. 21+00 SOUTHPORT CUT-2 THRU STA. 26+00 COUTHPORT CUT-3 PLAN</p>	
<p>DEPARTMENT OF THE ARMY JACKSONVILLE DISTRICT, CORPS OF ENGINEERS JACKSONVILLE, FLORIDA</p>	
<p>Scale: AS SHOWN</p>	
<p>Drawing no.</p>	
<p>8/9</p>	
<p>SHEET 08 OF 11</p>	



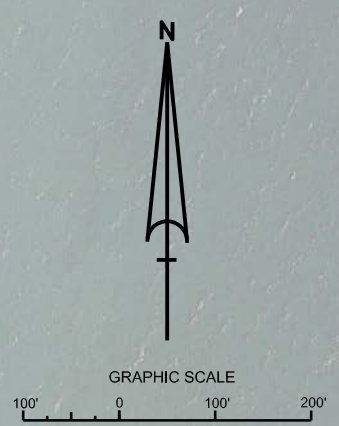
MATCHLINE SHEET NO. 08 STA. 26+00

MATCHLINE SHEET NO. 10


SOUTHPORT CUT-3



AIDS TO NAVIGATION	PLANE COORDINATES		LATITUDE	LONGITUDE
	X	Y		
LT-35 (06/15)	946,943	630,244	26°03'53.42"	80°06'51.25"



NOTES:
1. REFER TO SURVEY NO. 15-128.
2. SEE SHEET NO. 1 FOR SURVEY NOTES.



US Army Corps of Engineers
Jacksonville District

SAFETY ON THIS JOB
DEPENDS ON YOU

Call by: GRL

Designed by: WRM

Drawn by: WRM

Checked by: WRM

File No.: 15-128-00-000000.DGN

Project: PORT EVERGLADES HARBOR/CANAL/CP/DGN

Date: JUN 2015

Reference File: 15-128-00-000000.DGN

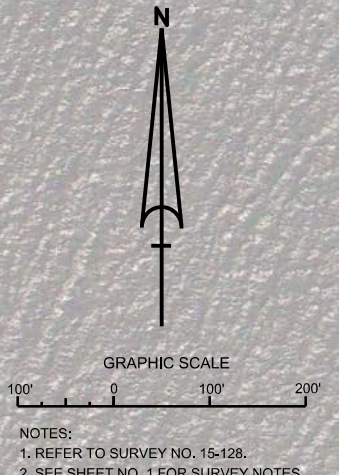
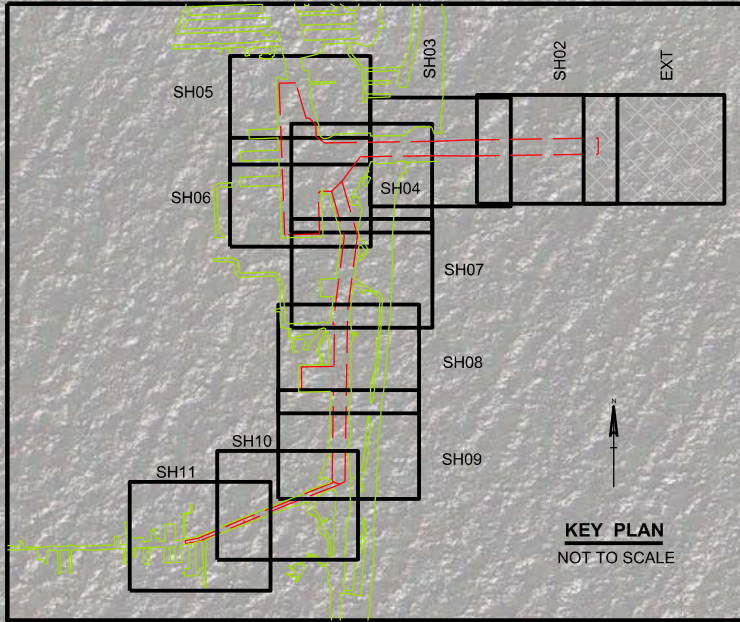
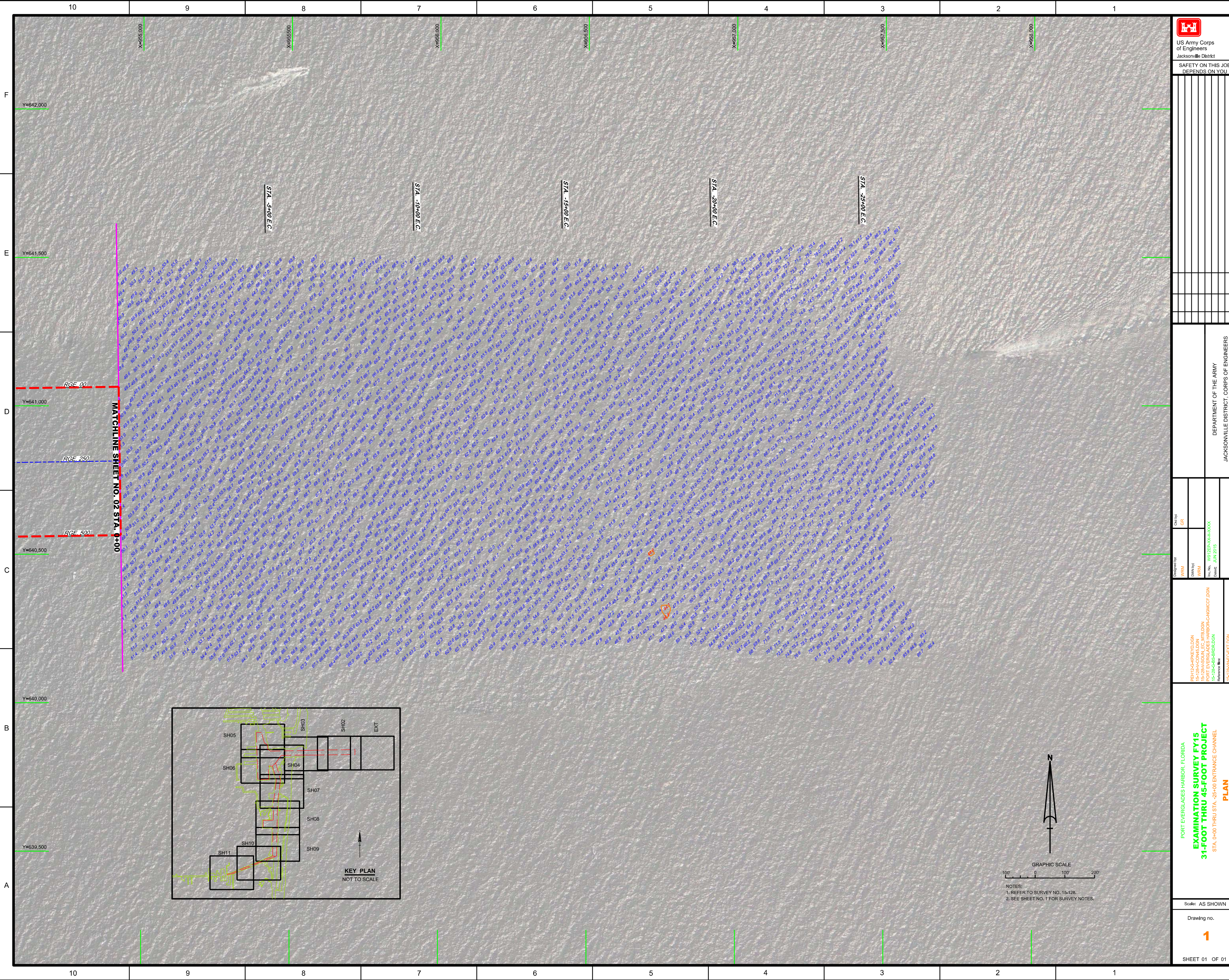
DEPARTMENT OF THE ARMY
JACKSONVILLE DISTRICT, CORPS OF ENGINEERS
JACKSONVILLE, FLORIDA

PORT EVERGLADES HARBOR, FLORIDA
EXAMINATION SURVEY FY15
31-FOOT THRU 45-FOOT PROJECT
STA. 26+00 THRU STA. 53+46 SOUTHPORT CUT-3
PLAN

Scale: AS SHOWN

Drawing no.
9/9

SHEET 09 OF 11



US Army Corps of Engineers Jacksonville District SAFETY ON THIS JOB DEPENDS ON YOU	
	Design: [] Date: [] Scale: [] Author: [] Checker: [] Title: [] Date: []
DEPARTMENT OF THE ARMY JACKSONVILLE DISTRICT CORPS OF ENGINEERS JACKSONVILLE, FLORIDA	
Drawn by: [] Design: [] Date: []	Checked by: [] Date: []
PORT EVERGLADES HARBOR, FLORIDA EXAMINATION SURVEY FY15 31-FOOT THRU STA. -25+00 ENTRANCE CHANNEL PLAN	
Scale: AS SHOWN Drawing no. 1 SHEET 01 OF 01	