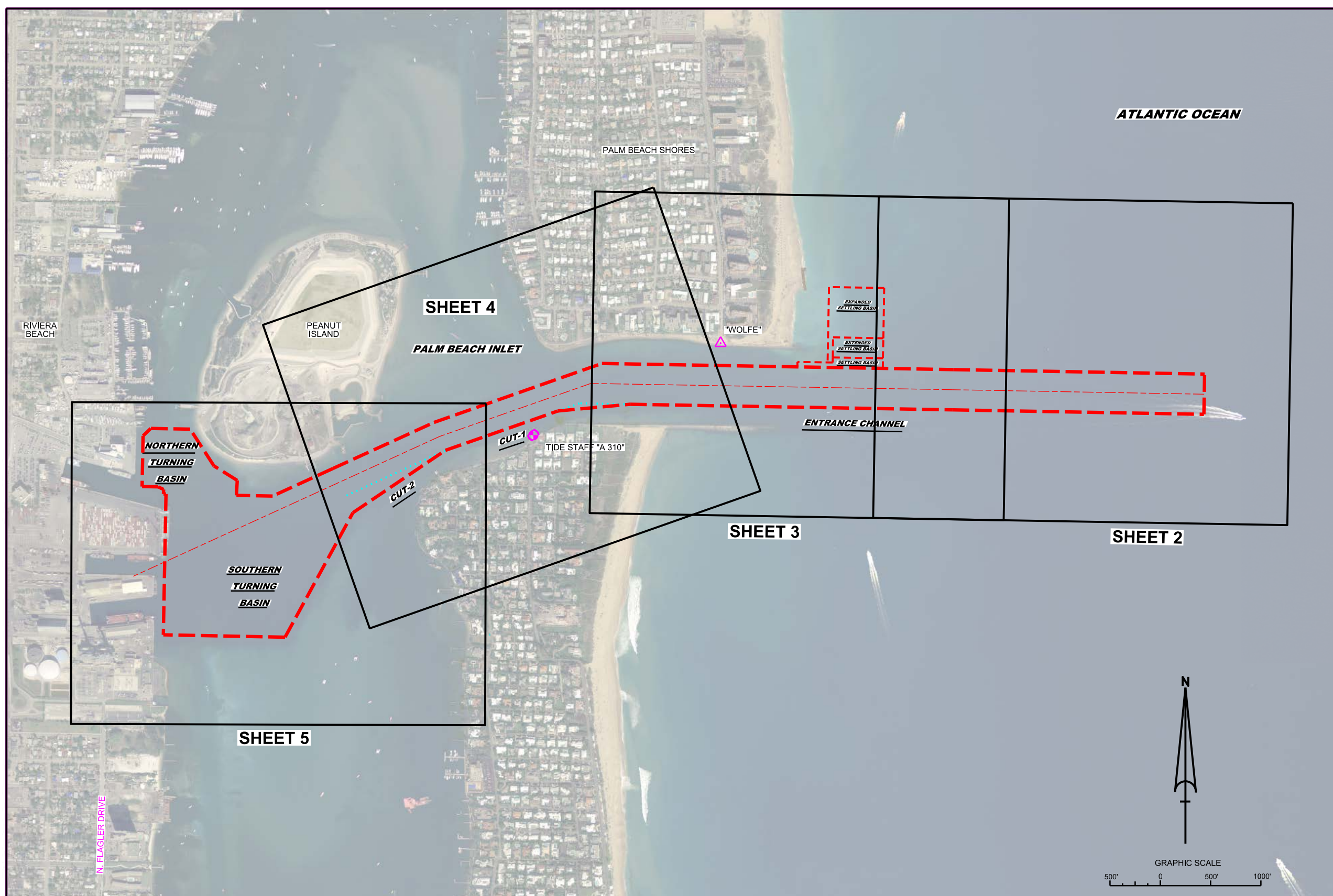
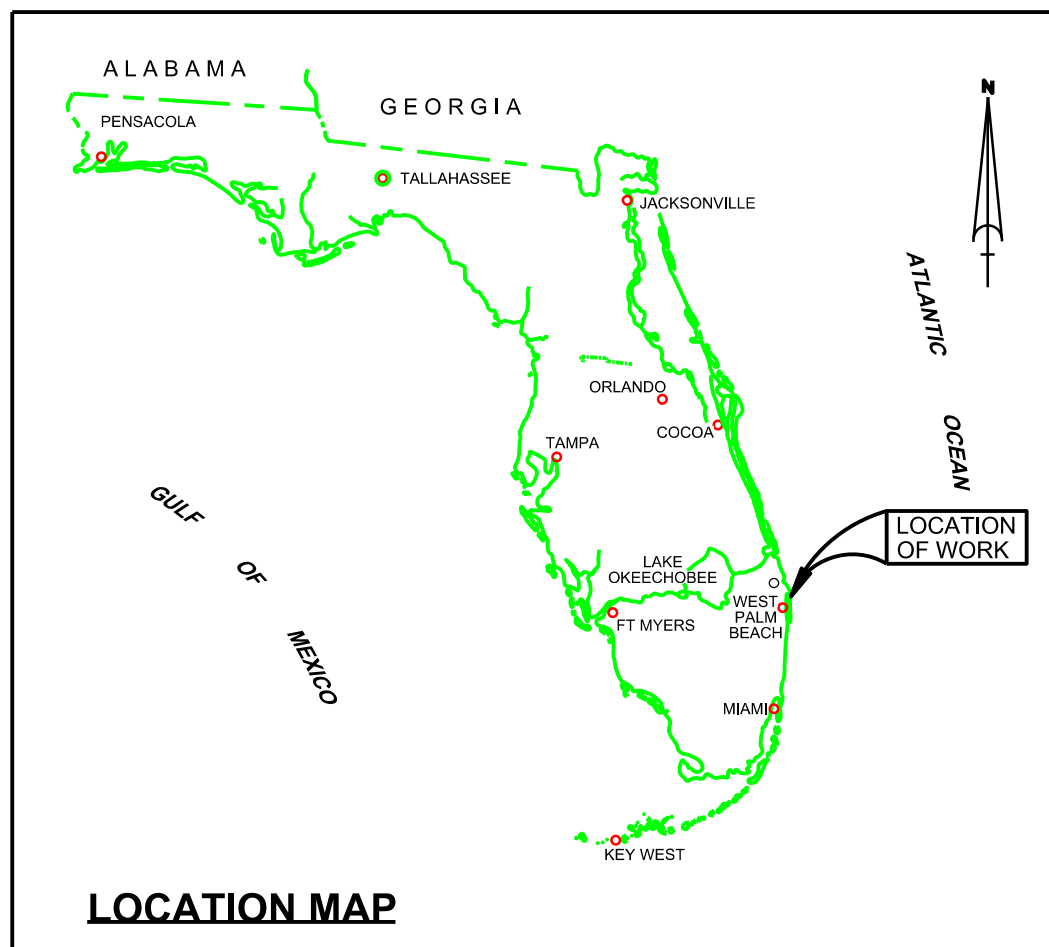


PALM BEACH HARBOR, FLORIDA

3rd QUARTER EXAMINATION SURVEY FY15

25, 33, 35, 37 & 39-FOOT PROJECT



SURVEY NOTES:

- REFER TO SURVEY NO. 15-127.
 - DEPTHS DEPICTED BY THIS SURVEY ARE REFERENCED TO MLLW, TIDAL EPOCH 1983-2001, AS REPORTED BY THE NATIONAL OCEANIC AND ATMOSPHERIC ADMINISTRATION (NOAA). NOAA'S VDATUM WAS USED AND CALIBRATED TO THE PUBLISHED MLLW HEIGHTS OF THE BENCHMARKS ASSOCIATED WITH THE TIDE GAGE SITE SPECIFIED BELOW:

NOAA TIDAL STATION 872-2588, PORT OF W, PALM BEACH, LAKE WORTH
 - ALL ELEVATIONS ARE BELOW THE CHART DATUM UNLESS PRECEDED BY A (+) SIGN.
 - TIDAL REDUCTIONS WERE OBTAINED USING REAL-TIME KINEMATIC (RTK) GPS AND UTILIZING A HYPACK KINEMATIC TIDAL DATUM (KTD) MODEL FILE BASED ON NOAA'S VDATUM. FILE NAME: PALM BEACH-BROWARD_20140529.KTD.
 - PLANE COORDINATES ARE BASED ON THE TRANSVERSE MERCATOR PROJECTION FOR THE EAST ZONE OF FLORIDA AND REFERENCED TO NORTH AMERICAN DATUM OF 1983.
 - ALL STATIONING REFERS TO THE CENTERLINE OF THE CHANNEL.
 - THIS SURVEY WAS PERFORMED USING REAL-TIME KINEMATIC GPS POSITIONING WITH THE FOLLOWING REFERENCE BASE LOCATION:

REFERENCE BASE LOCATED AT "WOLFE" (OPUS PID# BBBZ46)

TIDE STAFF LOCATED FROM "A 310" (PID: AD2870)
 - VERTICAL MEASUREMENTS WERE MADE USING A R2SONIC 2024 MULTI-BEAM SYSTEM OPERATING AT 240 KHZ. SOUNDINGS SHOWN ARE IN HIGH FREQUENCY.
- | VESSEL | DATE OF SURVEY | CUT |
|---------------|----------------|-------------------------------|
| SV-FLORIDA II | 29 JUN 2015 | ENT. CH., CUT-1, CUT-2 |
| SV-FLORIDA II | 30 JUN 2015 | TURNING BASIN, SETTLING BASIN |
- AIDS TO NAVIGATION WERE LOCATED DURING SURVEY.
 - THE INFORMATION DEPICTED ON THIS MAP REPRESENTS THE RESULTS OF SURVEYS MADE ON THE DATES INDICATED ABOVE AND CAN ONLY BE CONSIDERED AS INDICATING THE GENERAL CONDITIONS AT THAT TIME. THIS CHART IS SOLELY FOR THE DISTRIBUTION OF AVAILABLE DEPTHS AT THE TIME OF THE SURVEY.
 - SURVEY ACCURACY PERFORMANCE STANDARDS, QUALITY CONTROL, AND QUALITY ASSURANCE REQUIREMENTS WERE FOLLOWED DURING THIS SURVEY IN ACCORDANCE WITH USACE EM 1110-2-1003, HYDROGRAPHIC SURVEYING, 30 NOV 13.

LEGEND	
	MONUMENT
	LIGHTED BEACON
	GREEN DAYBEACON
	RED DAYBEACON
	RED LIGHTED BUOY
	GREEN LIGHTED BUOY
	CAN BUOY
	NUN BUOY
	TIDE STAFF
	PROJECT DEPTH

US Army Corps of Engineers
Jacksonville District

SAFETY ON THIS JOB
DEPENDS ON YOU

DESIGNED BY: WRM
DRAWN BY: WRM
CHECKED BY: WRM
DATE: JUN 2015

PROJECT: PALM BEACH HARBOR 3rd QUARTER EXAMINATION SURVEY FY15
INDEX, LOCATION AND VICINITY MAP

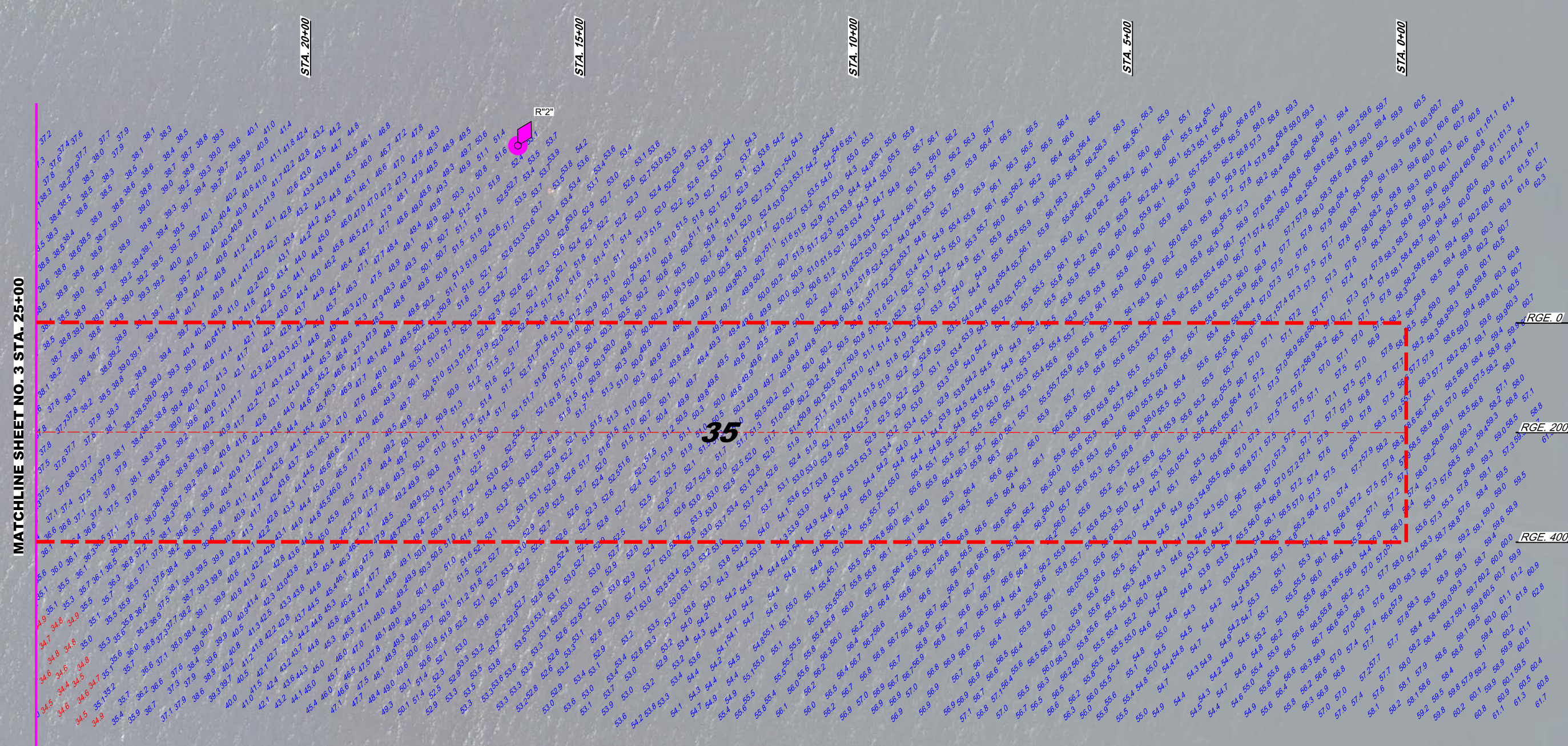
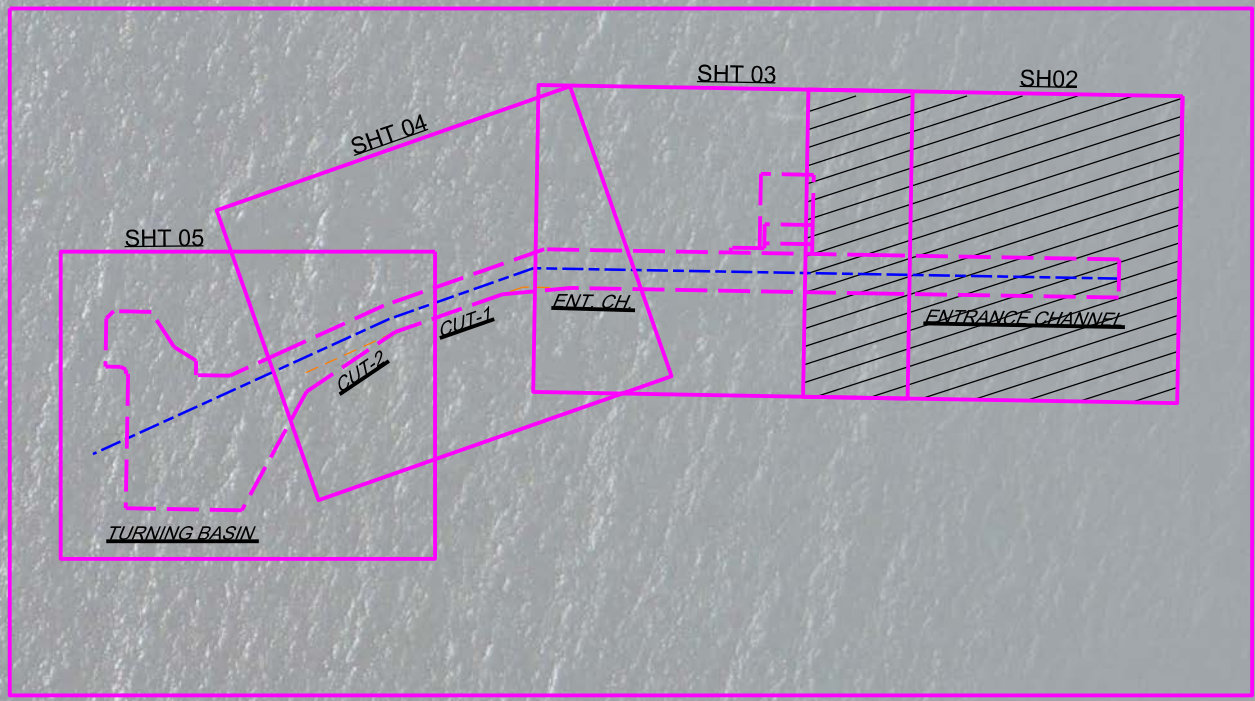
DEPARTMENT OF THE ARMY
JACKSONVILLE DISTRICT, CORPS OF ENGINEERS
JACKSONVILLE, FLORIDA

Scale: AS SHOWN

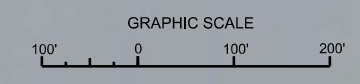
Drawing no. **1**

SHEET 01 OF 05

AIDS TO NAVIGATION	PLANE COORDINATES		LATITUDE	LONGITUDE
	X	Y		
LT. BUOY-2 (0615)	974.754	888.115	26°46'25.13"	80°01'24.85"



ENTRANCE CHANNEL



NOTES:
1. REFER TO SURVEY NO. 15-127.
2. SEE SHEET NO. 1 FOR SURVEY NOTES.

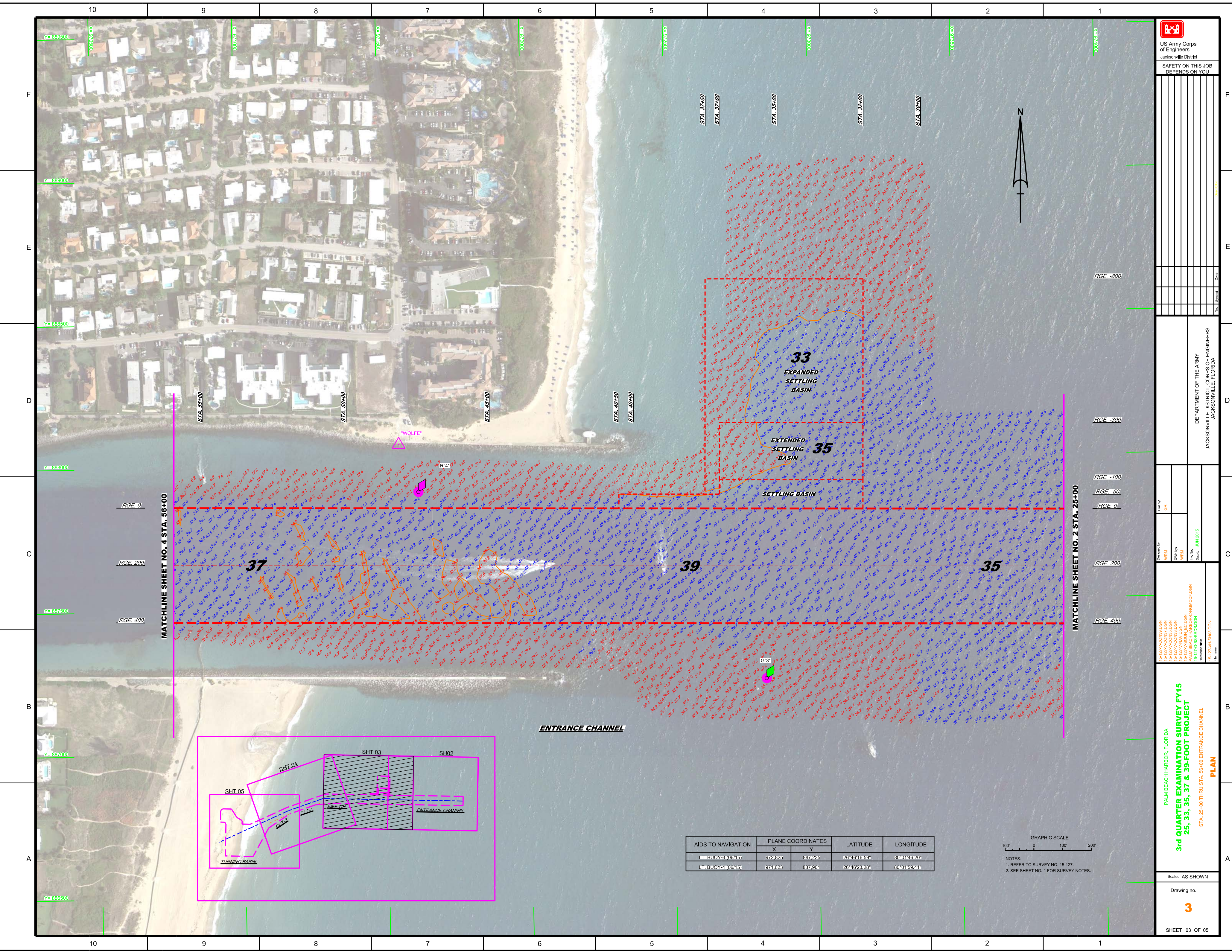


DEPARTMENT OF THE ARMY
JACKSONVILLE DISTRICT, CORPS OF ENGINEERS
JACKSONVILLE, FLORIDA

15-127-A-SUB-E-CC-DON
PALM BEACH HARBOR-CA-CC-CC-03
15-127-G-BS-BIRDSON
Reference: 15-127-MSH-02.DGN
Date: JUN 2015

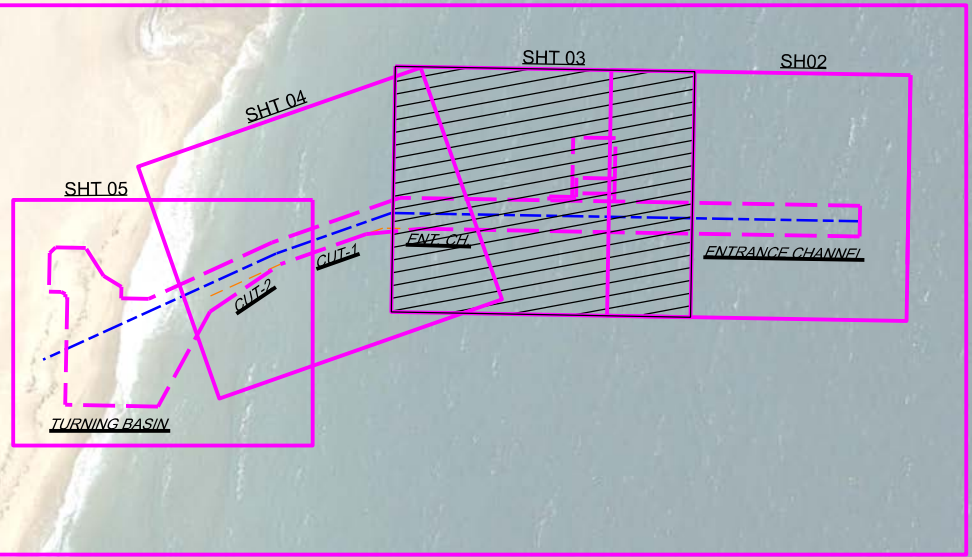
PALM BEACH HARBOR, FLORIDA
3rd QUARTER EXAMINATION SURVEY FY15
25, 33, 35, 37 & 39-FOOT PROJECT
STA. 0+00 THRU STA. 25+00 ENTRANCE CHANNEL
PLAN

Scale: AS SHOWN
Drawing no. **2**
SHEET 02 OF 05



MATCHLINE SHEET NO. 4 STA. 56+00

MATCHLINE SHEET NO. 2 STA. 25+00



AIDS TO NAVIGATION	PLANE COORDINATES		LATITUDE	LONGITUDE
	X	Y		
LT. BUOY-3 (06/15)	972.825	887.235	26°46'16.59"	80°01'46.20"
LT. BUOY-4 (06/15)	974.623	887.904	26°46'23.28"	80°01'59.41"

GRAPHIC SCALE
0 100 200
NOTES:
1. REFER TO SURVEY NO. 15-127.
2. SEE SHEET NO. 1 FOR SURVEY NOTES.

US Army Corps of Engineers
Jacksonville District
SAFETY ON THIS JOB
DEPENDS ON YOU

DEPARTMENT OF THE ARMY
JACKSONVILLE DISTRICT, CORPS OF ENGINEERS
JACKSONVILLE, FLORIDA

3rd QUARTER EXAMINATION SURVEY FY15
25, 33, 35, 37 & 39-FOOT PROJECT

STA. 25+00 THRU STA. 36+00 ENTRANCE CHANNEL
PLAN

Scale: AS SHOWN
Drawing no. 3
SHEET 03 OF 05

Checked By: GRL	Drawn By: WRM
Reviewed By: WRM	Checked: JUN 2015

US Army Corps of Engineers
Jacksonville District
SAFETY ON THIS JOB
DEPENDS ON YOU

DEPARTMENT OF THE ARMY
JACKSONVILLE DISTRICT, CORPS OF ENGINEERS
JACKSONVILLE, FLORIDA

Drawn by: GR
Checked by: GR
Designed by: WRM
DWG No: WRM
Project No: WRM
Scale: AS SHOWN
Date: JUN 2015

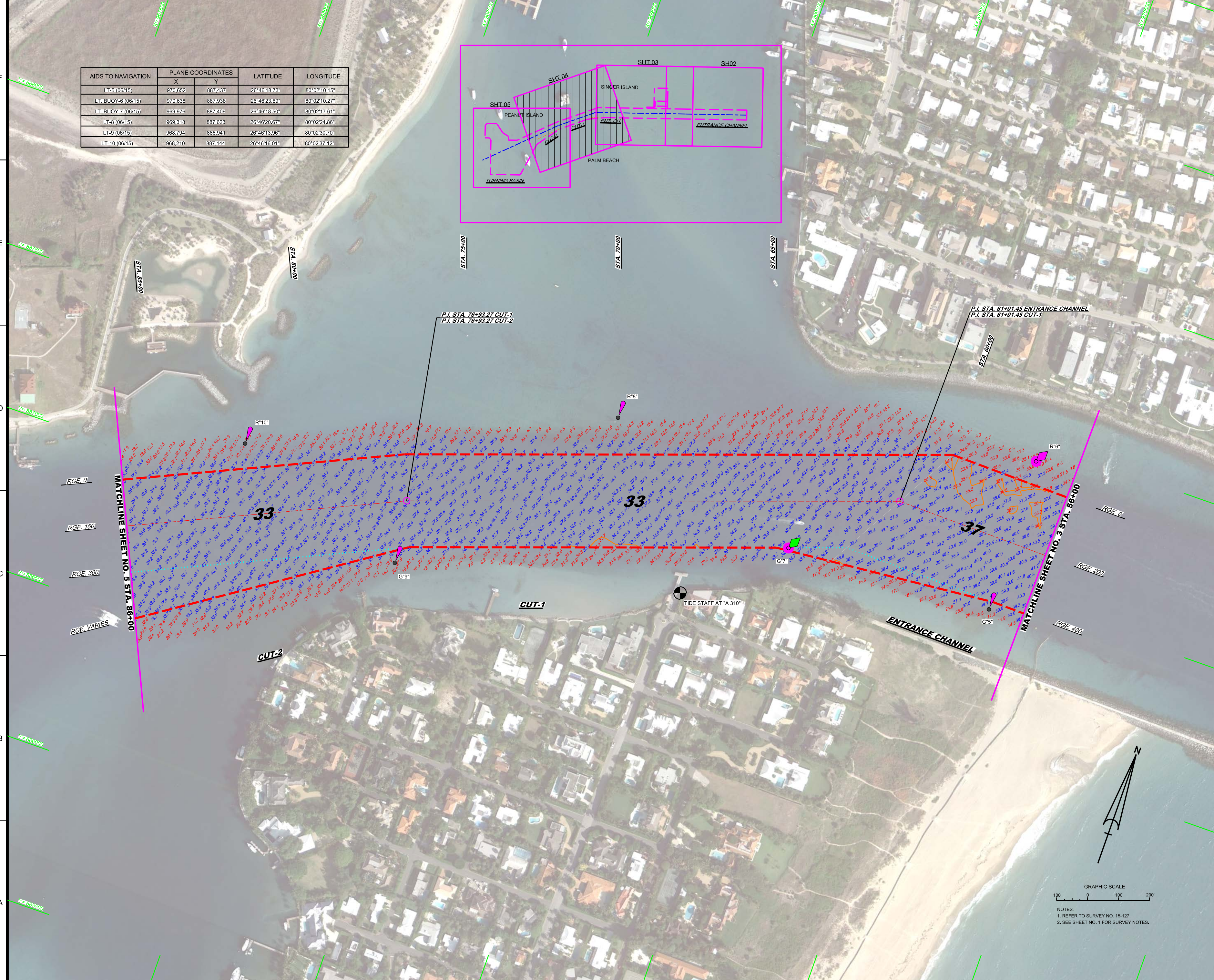
15-127A-003.DGN
15-127A-003.DWG
15-127A-003A_ECLDGN
15-127A-003A_ECLDWG
15-127A-003A_ECLDGN
15-127A-003A_ECLDWG
15-127A-003A_ECLDGN
15-127A-003A_ECLDWG
Reference files:
15-127A-003A.DGN
15-127A-003A.DWG

3rd QUARTER EXAMINATION SURVEY FY15
25, 33, 35, 37 & 39-FOOT PROJECT
STA. 56+00 ENTRANCE CHANNEL THRU STA. 86+00 CUT-2

PLAN

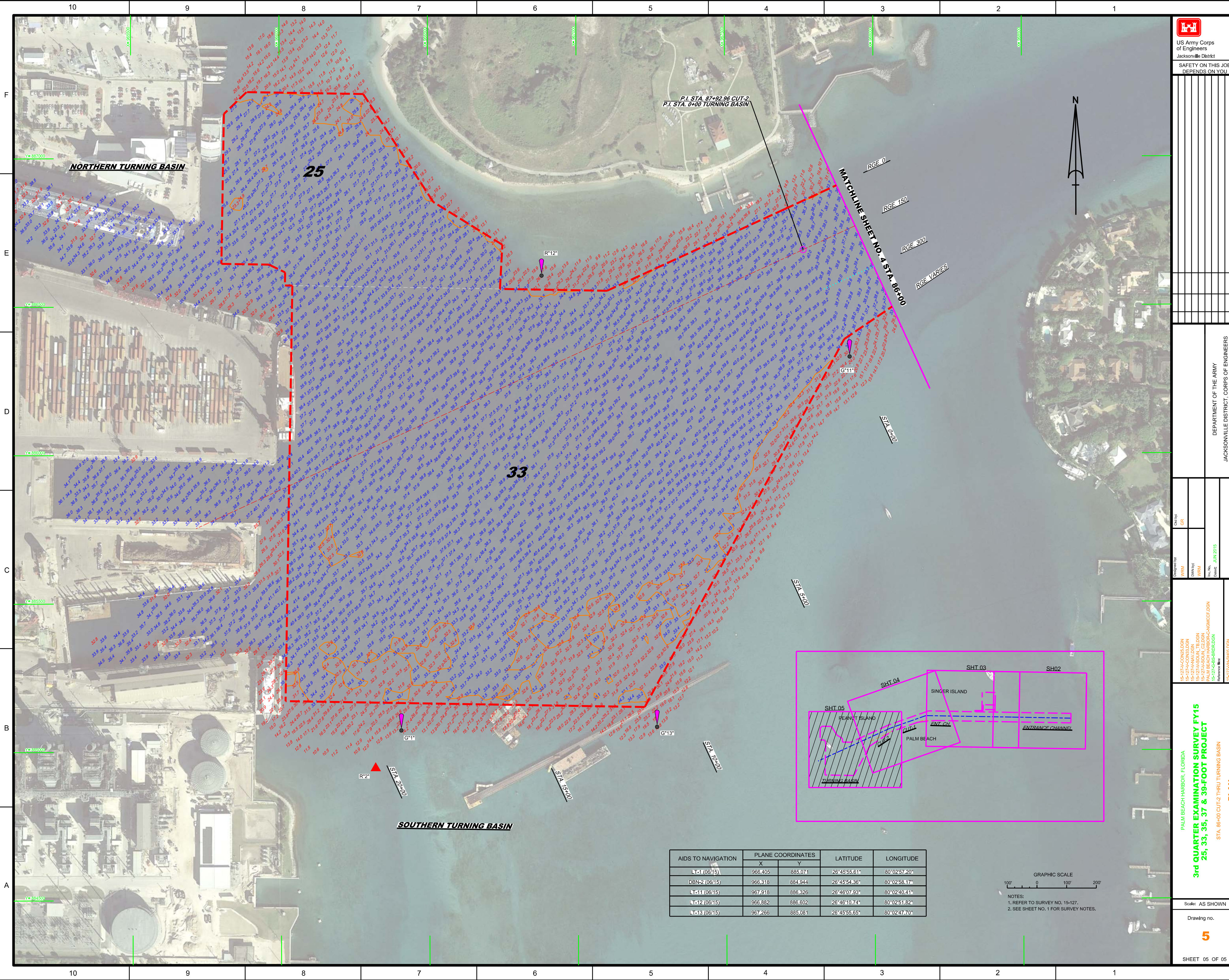
Scale: AS SHOWN
Drawing no. **4**
SHEET 04 OF 05

AIDS TO NAVIGATION	PLANE COORDINATES		LATITUDE	LONGITUDE
	X	Y		
LT-5 (06/15)	970.652	887.437	26°46'18.73"	80°02'10.15"
LT. BUOY-6 (06/15)	970.638	887.938	26°46'23.69"	80°02'10.27"
LT. BUOY-7 (06/15)	969.976	887.409	26°46'18.50"	80°02'17.61"
LT-8 (06/15)	969.318	887.623	26°46'20.67"	80°02'24.86"
LT-9 (06/15)	968.794	886.941	26°46'13.96"	80°02'30.70"
LT-10 (06/15)	968.210	887.144	26°46'16.01"	80°02'37.12"




GRAPHIC SCALE
1" = 100'
1" = 200'

NOTES:
1. REFER TO SURVEY NO. 15-127.
2. SEE SHEET NO. 1 FOR SURVEY NOTES.



AIDS TO NAVIGATION	PLANE COORDINATES		LATITUDE	LONGITUDE
	X	Y		
LT-1 (08/15)	966,405	885,071	26°45'55.61"	80°02'57.20"
DBN-2 (08/15)	966,318	884,944	26°45'54.36"	80°02'58.17"
LT-11 (08/15)	967,918	886,326	26°46'07.93"	80°02'40.41"
LT-12 (08/15)	966,882	886,602	26°46'10.74"	80°02'51.82"
LT-13 (08/15)	967,266	885,081	26°45'55.65"	80°02'47.70"

GRAPHIC SCALE
 100' 0 100' 200'
 NOTES:
 1. REFER TO SURVEY NO. 15-127.
 2. SEE SHEET NO. 1 FOR SURVEY NOTES.



US Army Corps of Engineers
 Jacksonville District
 SAFETY ON THIS JOB
 DEPENDS ON YOU

DEPARTMENT OF THE ARMY
 JACKSONVILLE DISTRICT, CORPS OF ENGINEERS
 JACKSONVILLE, FLORIDA

3rd QUARTER EXAMINATION SURVEY FY15
25, 33, 35, 37 & 39-FOOT PROJECT

STA. 86+00 CUT-2 THRU TURNING BASIN
PLAN

Scale: AS SHOWN
 Drawing no.
5

SHEET 05 OF 05