

NEW PASS SARASOTA COUNTY, FLORIDA HYDROGRAPHIC EXAM SURVEY FY15 8 AND 10-FOOT PROJECT

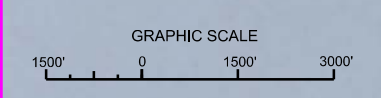
SURVEY NOTES

- REFER TO SURVEY NO. 15-121.
 - SOUNDINGS ARE IN FEET AND TENTHS AND REFER TO NOAA'S REPORTED MEAN LOWER LOW WATER (MLLW) OF THE 1983-2001 TIDAL EPOCH.
 - TIDAL REDUCTIONS WERE OBTAINED UTILIZING A REAL-TIME KINEMATIC (RTK) GPS AND REFERENCED TO MLLW UTILIZING A HYPACK KINEMATIC TIDE DATUM (KTD) MODEL. KTD FILE NAME IS: "SPC-FL-WEST-2010-12-07.KTD".
 - ALL ELEVATIONS ARE BELOW THE CHART DATUM UNLESS PRECEDED BY A (+) SIGN.
 - PLANE COORDINATES ARE BASED ON THE TRANSVERSE MERCATOR PROJECTION FOR THE WEST ZONE OF FLORIDA AND REFERENCED TO NORTH AMERICAN DATUM OF 1983 (NAD83).
 - ALL STATIONING REFERS TO THE CENTERLINE OF THE CHANNEL.
 - THIS SURVEY WAS PERFORMED USING REAL-TIME KINEMATIC (RTK) GPS POSITIONING WITH THE FOLLOWING REFERENCE BASE LOCATION:
REFERENCE BASE LOCATED AT "IWSA-96" (PID: BBDG39)
 - DEPTHS DEPICTED BY THIS SURVEY ARE REFERENCED TO MLLW. TIDAL EPOCH 1983-2001 AS REPORTED BY THE NATIONAL OCEANIC AND ATMOSPHERIC ADMINISTRATION (NOAA). NOAA'S VDATUM MODEL WAS USED AND CALIBRATED TO THE PUBLISHED MLLW HEIGHTS OF THE BENCHMARKS ASSOCIATED WITH THE TIDE GAGE SITES SPECIFIED BELOW:
NOAA TIDAL STATION 872-6083 USED FOR ALL CUTS. (PID: AG7713)
 - VERTICAL MEASUREMENTS WERE MADE USING AN EDGETECH MODEL 6025 INTERFEROMETRIC SYSTEM OPERATING AT 500-800 KHZ AND A ROSS SMARTSOUNDER MODEL 833C DUAL-FREQUENCY 28/200 KHZ SINGLE-BEAM TRANSDUCER. ALL SOUNDINGS SHOWN ARE IN HIGH FREQUENCY.
- | VESSEL | DATE OF SURVEY | CUT |
|--------|----------------|--------------------|
| SB-44 | 08-12 JUN 2015 | 1-7, TURNING BASIN |
- AIDS TO NAVIGATION WERE LOCATED DURING THIS SURVEY.
 - THE INFORMATION DEPICTED ON THIS MAP REPRESENTS THE RESULTS OF SURVEYS MADE ON THE DATES INDICATED ABOVE AND CAN ONLY BE CONSIDERED AS INDICATING THE GENERAL CONDITIONS AT THAT TIME. THIS CHART IS SOLELY FOR THE DISTRIBUTION OF AVAILABLE DEPTHS AT THE TIME OF THE SURVEY.
 - SURVEY ACCURACY PERFORMANCE STANDARDS, QUALITY CONTROL, AND QUALITY ASSURANCE REQUIREMENTS WERE FOLLOWED DURING THIS SURVEY IN ACCORDANCE WITH USACE EM 1110-2-1003, HYDROGRAPHIC SURVEYING, 30 NOV 13.

LEGEND	
	GPS MONUMENT
	LIGHTED BEACON
	GREEN DAYBEACON
	RED DAYBEACON
	RED LIGHTED BUOY
	GREEN LIGHTED BUOY
	CAN BUOY
	NUN BUOY
	TIDE STAFF
	PROJECT DEPTH


US Army Corps of Engineers
Jacksonville District
SAFETY ON THIS JOB
DEPENDS ON YOU

Checked By:	GRL	Designed By:	WRM	Drawn By:	WRM
Title:	NEW PASS SARASOTA COUNTY FLORIDA PROJECT CONDITION SURVEY FY15 8 & 10-FOOT PROJECT INDEX, LOCATION AND VICINITY MAP	File No.:	15-121-PH01.DGN	Reference File:	15-121-PH01.DGN
Department of the Army	Jacksonville District, Corps of Engineers	SARASOTA COUNTY, FLORIDA	PROJECT CONDITION SURVEY FY15	8 & 10-FOOT PROJECT	INDEX, LOCATION AND VICINITY MAP
Scale:	AS SHOWN	Drawing no.:	1		
SHEET 01 OF 08					



SHEET INDEX

AIDS TO NAVIGATION	PLANE COORDINATES		LATITUDE	LONGITUDE
	X	Y		
NUN BUOY-4 (06/15)	464,666	1,086,409	27°19'16.56"	82°35'23.22"
CAN BUOY-5 (06/15)	464,539	1,086,975	27°19'22.17"	82°35'24.67"
CAN BUOY-5A (06/15)	464,638	1,087,578	27°19'28.14"	82°35'23.60"



US Army Corps
of Engineers
Jacksonville District

**SAFETY ON THIS JOB
DEPENDS ON YOU**

DEPARTMENT OF THE ARMY
JACKSONVILLE DISTRICT, CORPS OF ENGINEERS
JACKSONVILLE, FLORIDA

Checked by: GRL
Designed by: WRM
Drawn by: WRM
Plot Date: 08/27/2014
Project: 15-1214-HR-02-DGN
Drawing: 15-1214-HR-02-DGN
Revision: 15-1214-HR-02-DGN

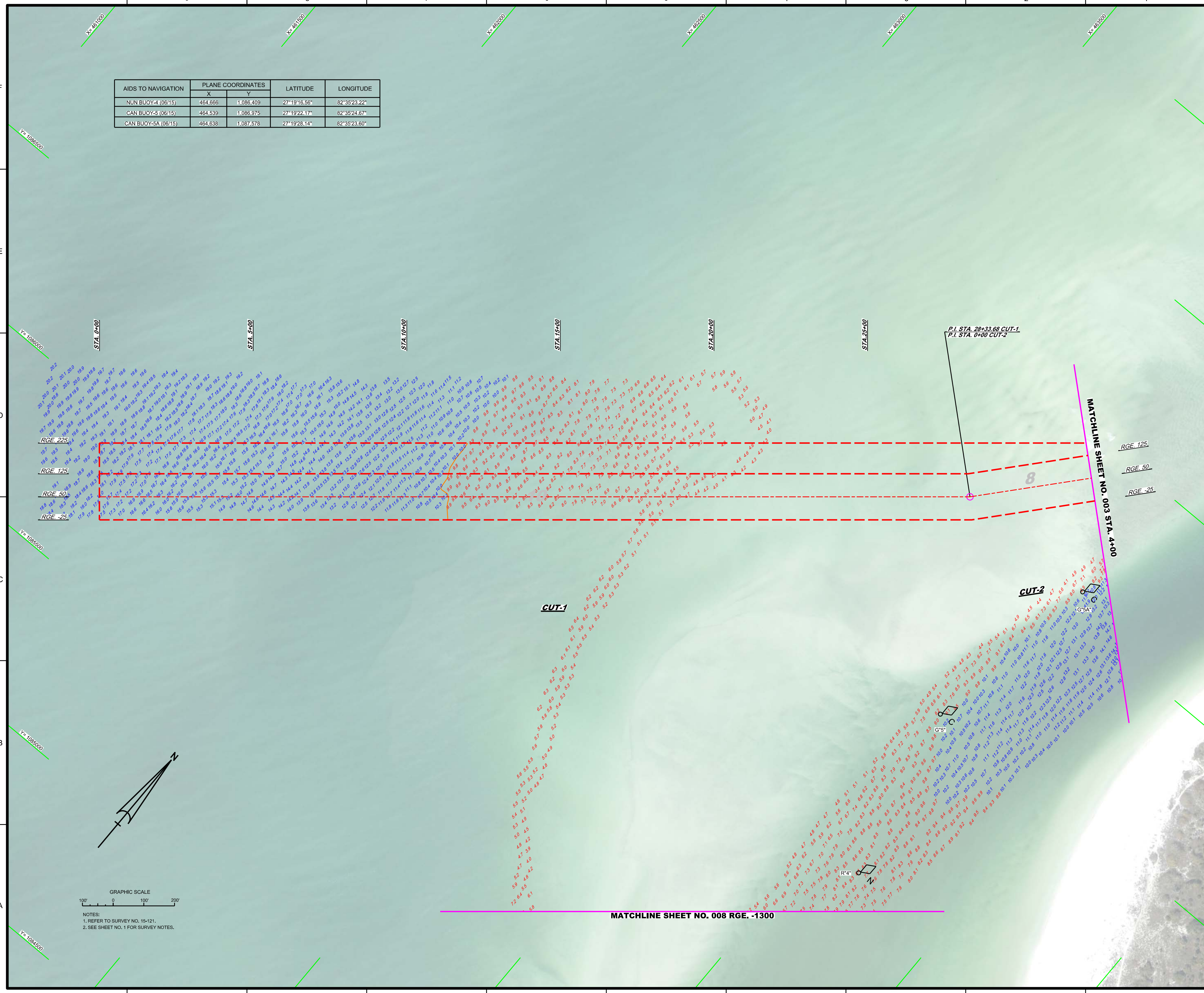
**PROJECT CONDITION SURVEY FY15
8 & 10-FOOT PROJECT**

STA. 0+00 CUT-1 THRU STA. 4+00 CUT-2
PLAN

Scale: AS SHOWN

Drawing no.
2

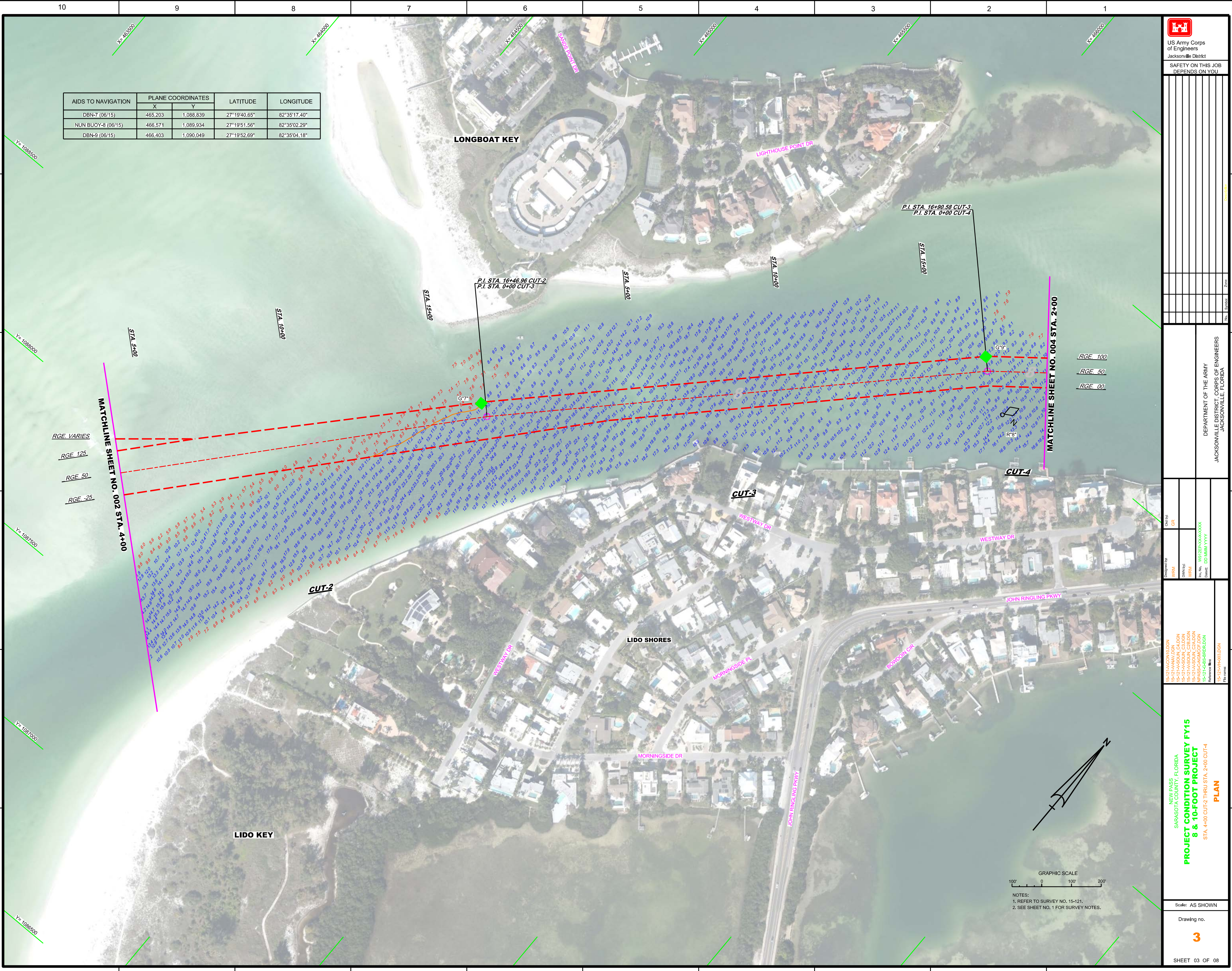
SHEET 02 OF 08



MATCHLINE SHEET NO. 008 RGE. -1300

MATCHLINE SHEET NO. 003 STA. 4+00

AIDS TO NAVIGATION	PLANE COORDINATES		LATITUDE	LONGITUDE
	X	Y		
DBN-7 (06/15)	465,203	1,088,839	27°19'40.65"	82°35'17.40"
NUN BUOY-8 (06/15)	466,571	1,089,934	27°19'51.56"	82°35'02.29"
DBN-9 (06/15)	466,403	1,090,049	27°19'52.69"	82°35'04.18"

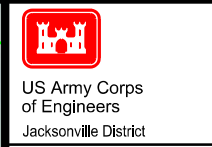


GRAPHIC SCALE
1" = 200'

NOTES:
1. REFER TO SURVEY NO. 15-121.
2. SEE SHEET NO. 1 FOR SURVEY NOTES.

Drawn by: GRJ
Checked by: VPM/RFJ
Designed by: VPM/RFJ
Title: 15-121-000-000
Scale: AS SHOWN
Date: 03/09/10
Project: 15-121-000-000

NEW PASS
SARASOTA COUNTY, FLORIDA
PROJECT CONDITION SURVEY FY15
8 & 10-FOOT PROJECT
STA. 4+00 CUT-2 THRU STA. 2+00 CUT-4
PLAN

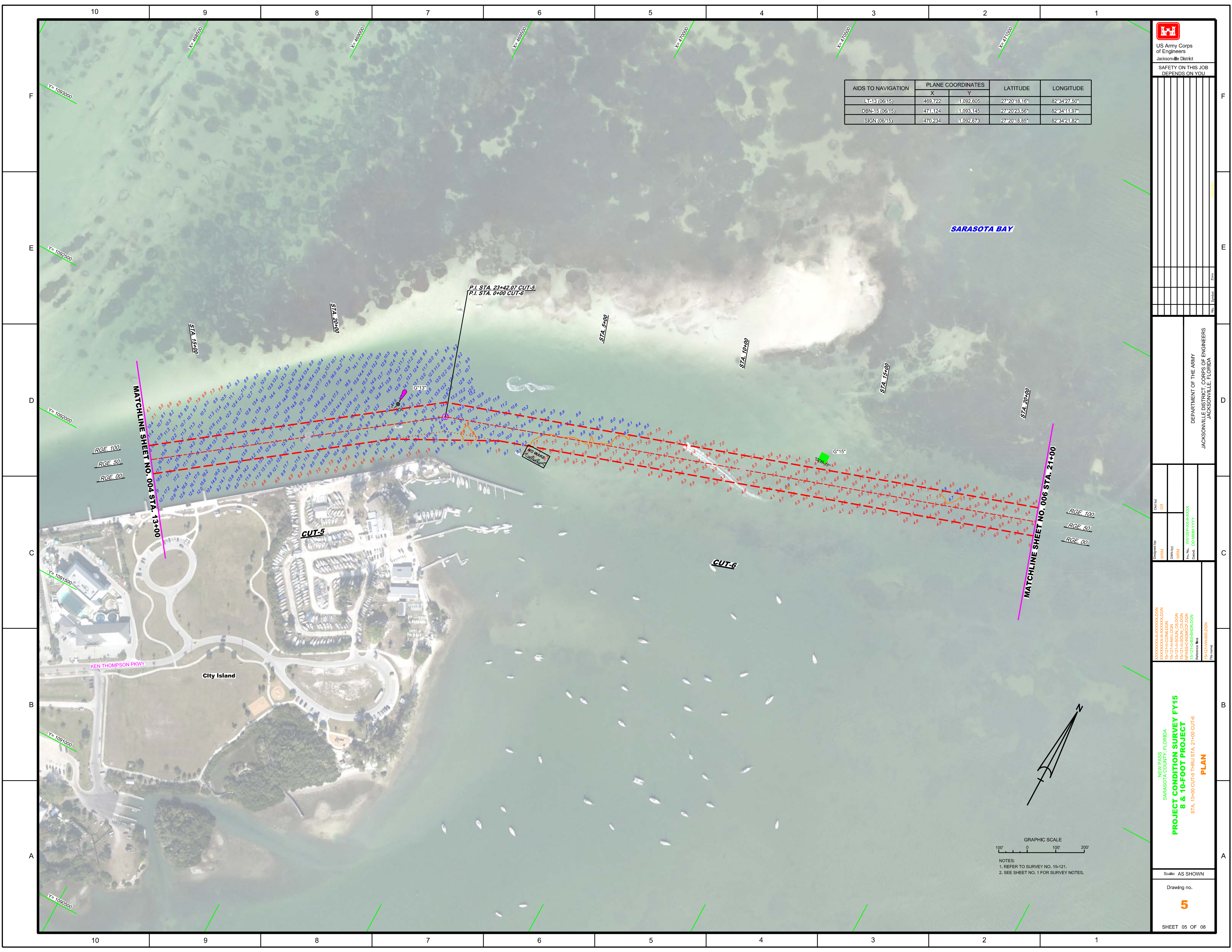


US Army Corps of Engineers
Jacksonville District
SAFETY ON THIS JOB
DEPENDS ON YOU

AIDS TO NAVIGATION	PLANE COORDINATES		LATITUDE	LONGITUDE
	X	Y		
LT-13 (06/15)	469,722	1,092,605	27°20'18.16"	82°34'27.50"
DBN-15 (06/15)	474,124	1,093,145	27°20'23.56"	82°34'11.97"
SIGN (06/15)	470,234	1,092,673	27°20'18.85"	82°34'21.82"

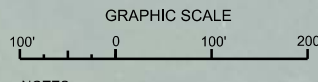
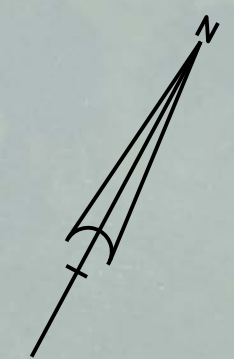
SARASOTA BAY

P.I. STA. 23+42.07 CUT-5
P.I. STA. 0+00 CUT-6



RGE. 100
RGE. 50
RGE. 00

RGE. 100
RGE. 50
RGE. 00



NOTES:
1. REFER TO SURVEY NO. 15-121.
2. SEE SHEET NO. 1 FOR SURVEY NOTES.

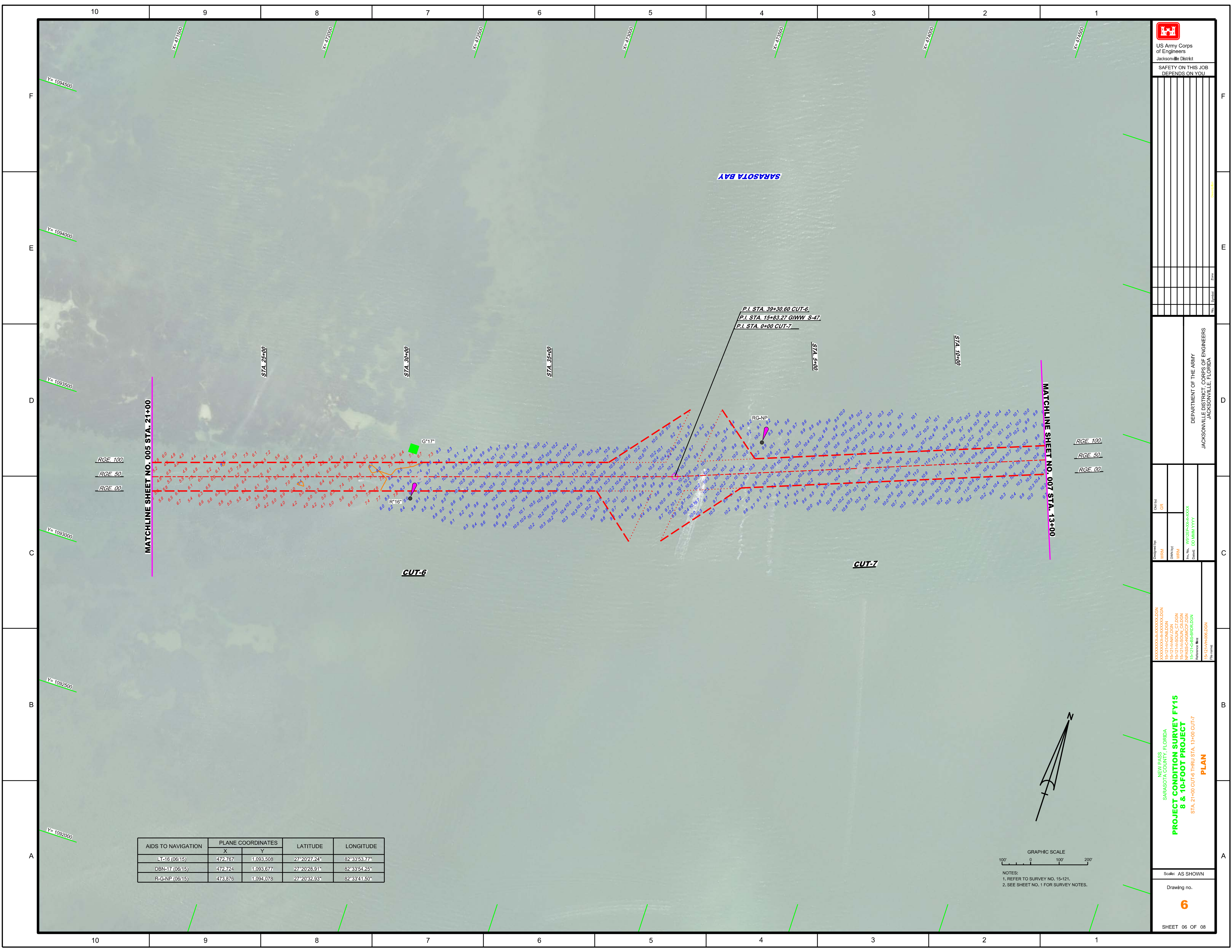
DEPARTMENT OF THE ARMY
JACKSONVILLE DISTRICT, CORPS OF ENGINEERS
JACKSONVILLE, FLORIDA

Checked by: GRL
Designed by: WRM
Drawn by: WRM
File No.: W8121A-SARASOTA_CUTS
Date: 00/00/00

XXXXXXXXXXXXXXXXXXXX
XXXXXXXXXXXXXXXXXXXX
XXXXXXXXXXXXXXXXXXXX
15-121A-SARASOTA_CUTS
15-121A-SARASOTA_CUTS
15-121A-SARASOTA_CUTS
15-121A-SARASOTA_CUTS
15-121A-SARASOTA_CUTS
Reference files:
15-121A-H001.DGN
15-121A-H002.DGN

NEW PASS
SARASOTA COUNTY, FLORIDA
**PROJECT CONDITION SURVEY FY15
8 & 10-FOOT PROJECT**
STA. 13+00 CUT-5 THRU STA. 21+00 CUT-6
PLAN

Scale: AS SHOWN
Drawing no.
5
SHEET 05 OF 08




 US Army Corps
 of Engineers
 Jacksonville District
 SAFETY ON THIS JOB
 DEPENDS ON YOU

DEPARTMENT OF THE ARMY
 JACKSONVILLE DISTRICT, CORPS OF ENGINEERS
 JACKSONVILLE, FLORIDA

Designed by: WRM
 Drawn by: WRM
 Checked: DD
 Date: 00/00/00

PROJECT CONDITION SURVEY FY15
 8 & 10-FOOT PROJECT
 STA. 21+00 CUT-6 THRU STA. 13+00 CUT-7
 PLAN

Scale: AS SHOWN
 Drawing no.
6
 SHEET 06 OF 08

AIDS TO NAVIGATION	PLANE COORDINATES		LATITUDE	LONGITUDE
	X	Y		
LT-16 (06/15)	472,767	1,093,508	27°20'27.24"	82°33'53.77"
DBN-17 (06/15)	472,724	1,093,677	27°20'26.91"	82°33'54.25"
R-C-NP (06/15)	473,876	1,094,078	27°20'32.93"	82°33'41.50"



