



 US Army Corps of Engineers Jacksonville District SAFETY ON THIS JOB DEPENDS ON YOU	
Author	
Checked by	
Designated by	
Drawn by	
Reviewed by	
Scale	
Zone	

DEPARTMENT OF THE ARMY
JACKSONVILLE DISTRICT CORPS OF ENGINEERS
JACKSONVILLE, FLORIDA

MATCHLINE SHEET NO. 037 STA. 45+00

MATCHLINE SHEET NO. 035 STA. 15+00

RGE -200
 RGE 00
 RGE 200

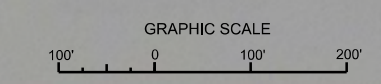
STA. 40+00
 STA. 35+00
 STA. 30+00
 STA. 25+00
 STA. 20+00

INFO SIGN

CUT-50

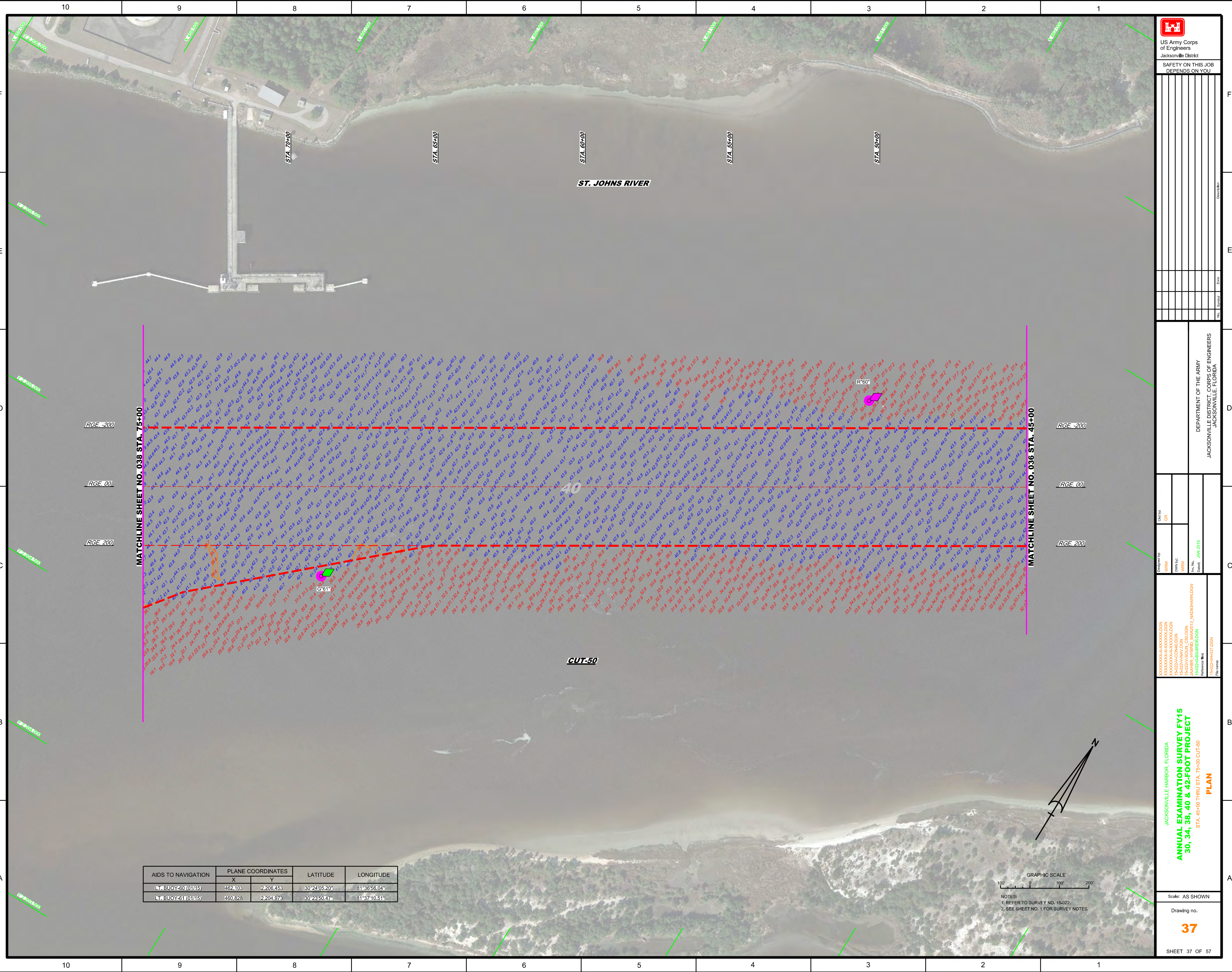
Designated by: GR
 Drawn by: GR
 Reviewed by: GR
 Date: JAN 2015

JACKSONVILLE HARBOR, FLORIDA
ANNUAL EXAMINATION SURVEY FY15
30, 34, 38, 40 & 42-FOOT PROJECT
 STA. 15+00 THRU STA. 45+00 CUT-50
PLAN



NOTES:
 1. REFER TO SURVEY NO. 15-022.
 2. SEE SHEET NO. 1 FOR SURVEY NOTES.


Drawing no.
36
 SHEET 36 OF 57



AIDS TO NAVIGATION	PLANE COORDINATES		LATITUDE	LONGITUDE
	X	Y		
LT BUOY 50 (01115)	462,103	2,206,453	30°24'05.20"	81°36'56.04"
LT BUOY 51 (01115)	460,828	2,204,976	30°23'50.37"	81°37'10.51"



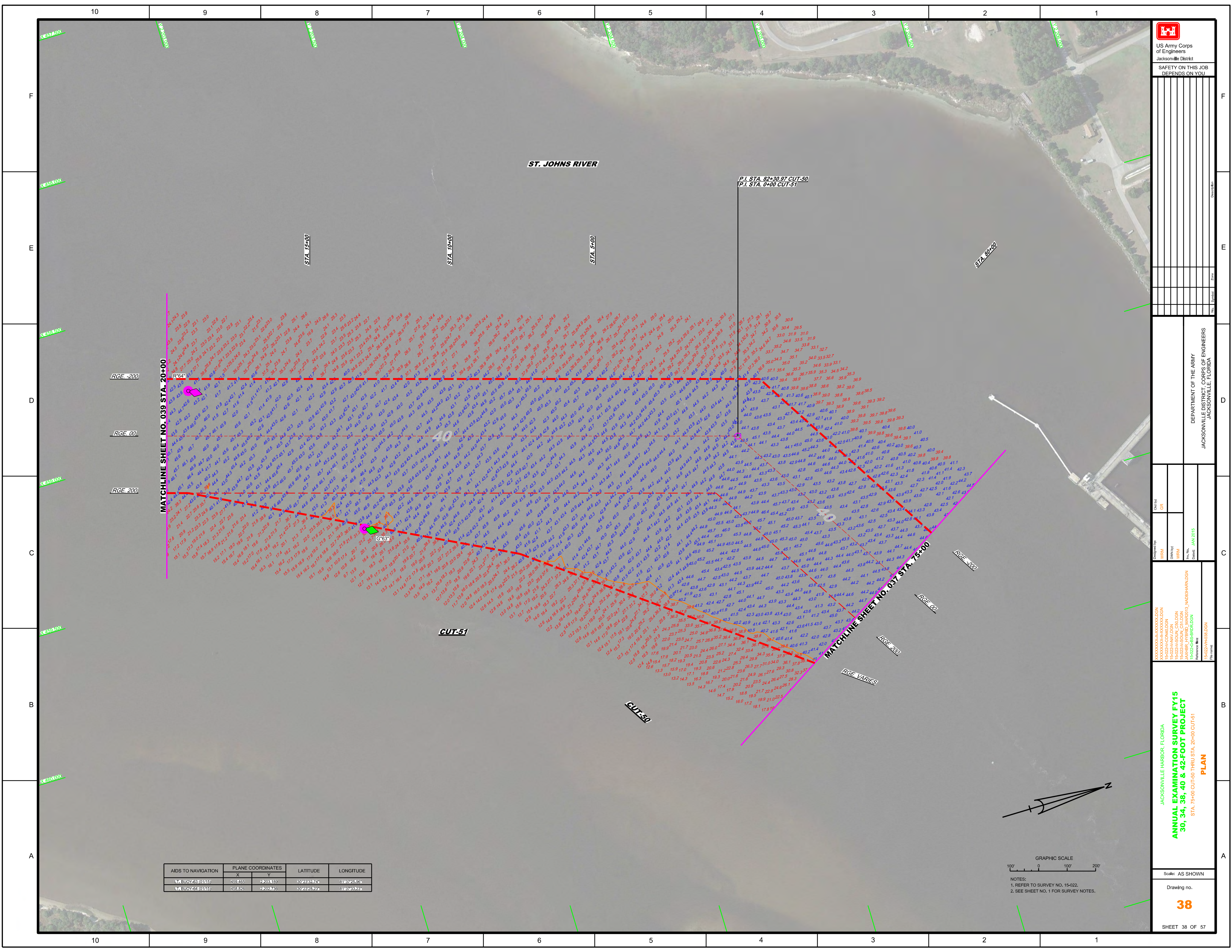
NOTES:
 1. REFER TO SURVEY NO. 15-022.
 2. SEE SHEET NO. 1 FOR SURVEY NOTES.



US Army Corps of Engineers
 Jacksonville District
 SAFETY ON THIS JOB DEPENDS ON YOU

DEPARTMENT OF THE ARMY
 JACKSONVILLE DISTRICT, CORPS OF ENGINEERS
 JACKSONVILLE, FLORIDA

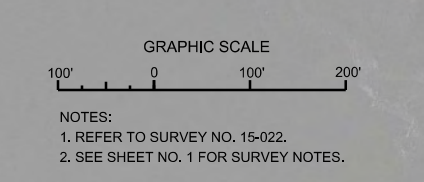
Designed By: WRM	Check By: GRL	Date: JAN 2015
Drawn By: WRM	Scale: AS SHOWN	Project No.: 15-022-AVAV-DGN
Project Name: JACKSONVILLE HARBOR, FLORIDA ANNUAL EXAMINATION SURVEY FY15 STA. 45+00 THRU STA. 75+00 CUT-50	Drawing no.: 37	Sheet no.: SHEET 37 OF 57



F
E
D
C
B
A

10 9 8 7 6 5 4 3 2 1

AIDS TO NAVIGATION	PLANE COORDINATES		LATITUDE	LONGITUDE
	X	Y		
LR BUOY 431 (1145)	459.205	2203.180	30°23'22.24"	81°12'25.50"
LR BUOY 434 (1145)	453.820	2207.290	30°23'22.324"	81°12'25.324"



SAFETY ON THIS JOB
DEPENDS ON YOU

DEPARTMENT OF THE ARMY
JACKSONVILLE DISTRICT, CORPS OF ENGINEERS
JACKSONVILLE, FLORIDA

Drawn by: GRL
 Checked by: VPM
 Date: JAN 2015

JACKSONVILLE HARBOR, FLORIDA
**ANNUAL EXAMINATION SURVEY FY15
 30, 34, 38, 40 & 42-FOOT PROJECT**
 STA. 75+00 CUT-50 THRU STA. 20+00 CUT-51
PLAN

Scale: AS SHOWN
 Drawing No. **38**
 SHEET 38 OF 57



SAFETY ON THIS JOB DEPENDS ON YOU

No.	Symbol	Zone	Description

DEPARTMENT OF THE ARMY
JACKSONVILLE DISTRICT, CORPS OF ENGINEERS
JACKSONVILLE, FLORIDA

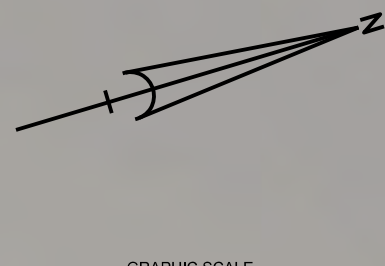
Designed by: WRM
Checked by: GRL
Drawn by: WRM
Title Block Date: JAN 2015
Reference File: 15-022-HAV-000103_NA03HARDEN
File Name: 15-022-HAV-000103

JACKSONVILLE HARBOR, FLORIDA
ANNUAL EXAMINATION SURVEY FY15
30, 34, 38, 40 & 42-FOOT PROJECT
STA. 20+00 THRU STA. 50+00 CUT-51
PLAN

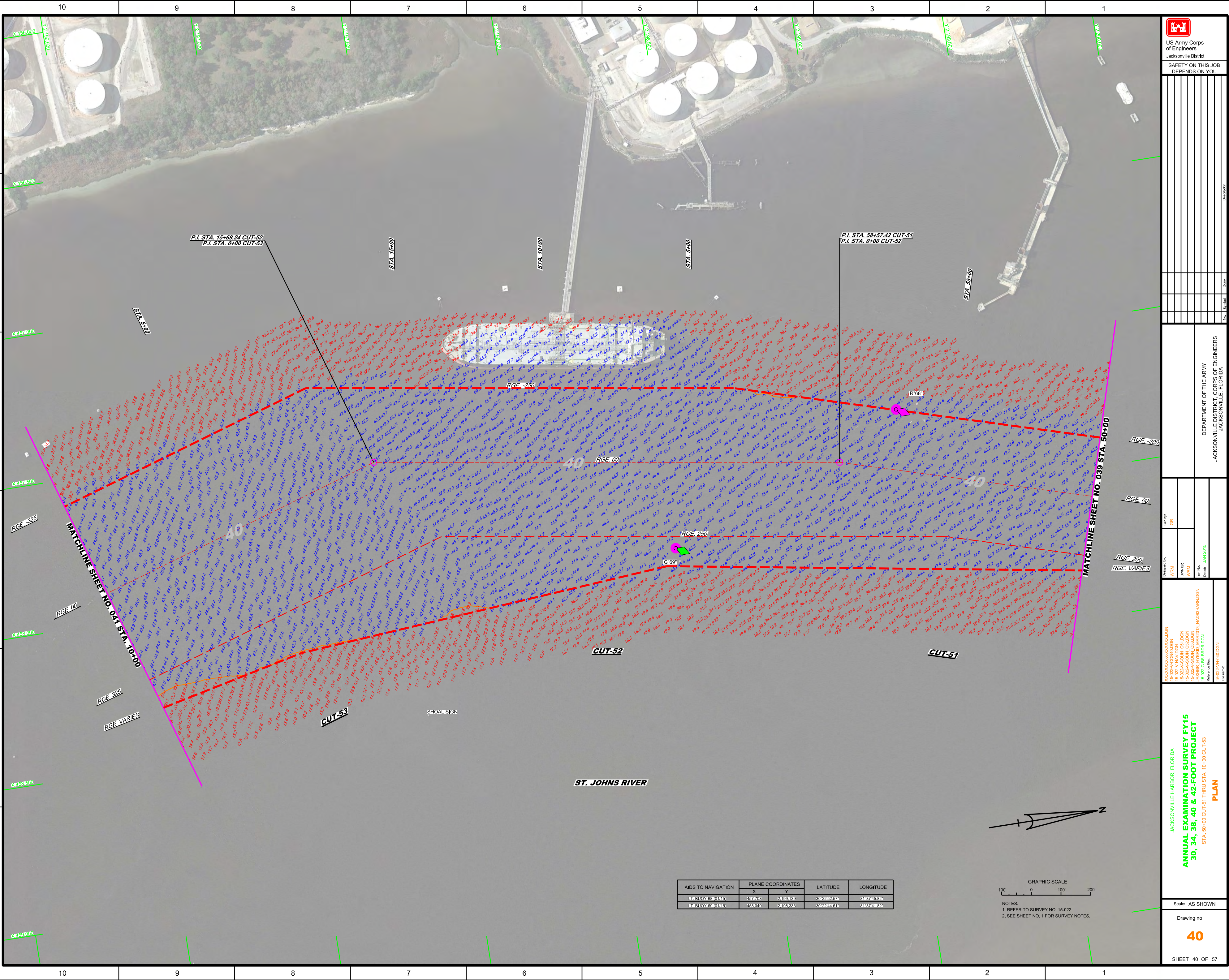
Scale: AS SHOWN
Drawing no. **39**
SHEET 39 OF 57




AIDS TO NAVIGATION	PLANE COORDINATES		LATITUDE	LONGITUDE
	X	Y		
LT. BUOY-66 (0115)	458,148	2,200,578	30°23'06.83"	81°37'40.82"
LT. BUOY-67 (0115)	458,464	2,200,191	30°23'03.02"	81°37'37.20"



NOTES:
1. REFER TO SURVEY NO. 15-022.
2. SEE SHEET NO. 1 FOR SURVEY NOTES.




 US Army Corps of Engineers
 Jacksonville District
 SAFETY ON THIS JOB
 DEPENDS ON YOU

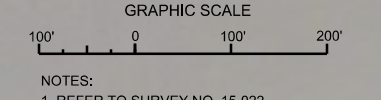
DEPARTMENT OF THE ARMY
 JACKSONVILLE DISTRICT, CORPS OF ENGINEERS
 JACKSONVILLE, FLORIDA

Checked By: GRL
 Designed By: WRM
 Drawn By: WRM
 Date: JAN 2015

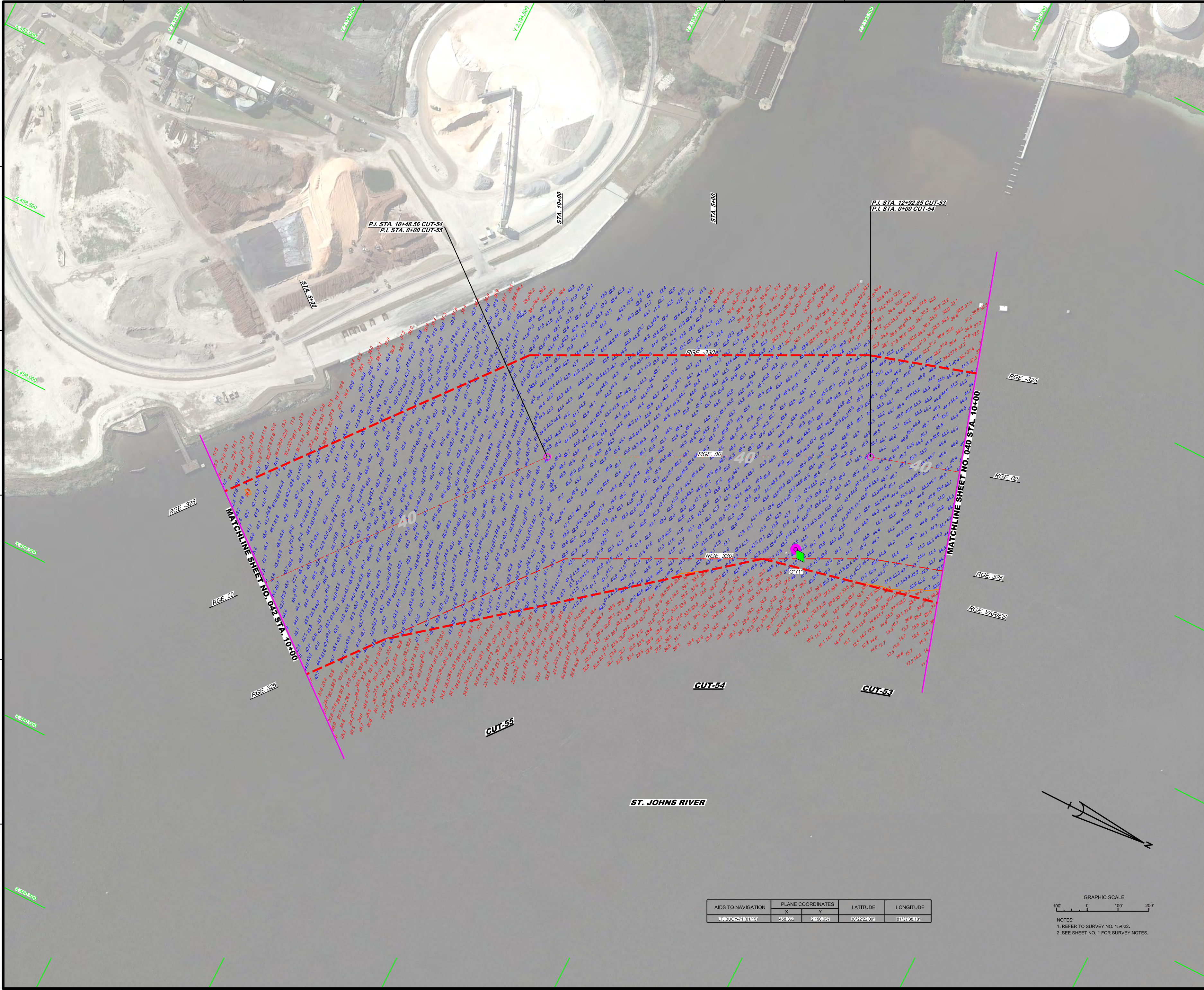
15-022A-SOUL_C34.DGN
 15-022A-SOUL_C42.DGN
 15-022A-SOUL_C43.DGN
 15-022A-SOUL_C44.DGN
 15-022A-SOUL_C45.DGN
 15-022A-SOUL_C46.DGN
 15-022A-SOUL_C47.DGN
 15-022A-SOUL_C48.DGN
 15-022A-SOUL_C49.DGN
 15-022A-SOUL_C50.DGN
 15-022A-SOUL_C51.DGN
 15-022A-SOUL_C52.DGN
 15-022A-SOUL_C53.DGN
 15-022A-SOUL_C54.DGN
 15-022A-SOUL_C55.DGN
 15-022A-SOUL_C56.DGN
 15-022A-SOUL_C57.DGN
 15-022A-SOUL_C58.DGN
 15-022A-SOUL_C59.DGN
 15-022A-SOUL_C60.DGN
 15-022A-SOUL_C61.DGN
 15-022A-SOUL_C62.DGN
 15-022A-SOUL_C63.DGN
 15-022A-SOUL_C64.DGN
 15-022A-SOUL_C65.DGN
 15-022A-SOUL_C66.DGN
 15-022A-SOUL_C67.DGN
 15-022A-SOUL_C68.DGN
 15-022A-SOUL_C69.DGN
 15-022A-SOUL_C70.DGN
 15-022A-SOUL_C71.DGN
 15-022A-SOUL_C72.DGN
 15-022A-SOUL_C73.DGN
 15-022A-SOUL_C74.DGN
 15-022A-SOUL_C75.DGN
 15-022A-SOUL_C76.DGN
 15-022A-SOUL_C77.DGN
 15-022A-SOUL_C78.DGN
 15-022A-SOUL_C79.DGN
 15-022A-SOUL_C80.DGN
 15-022A-SOUL_C81.DGN
 15-022A-SOUL_C82.DGN
 15-022A-SOUL_C83.DGN
 15-022A-SOUL_C84.DGN
 15-022A-SOUL_C85.DGN
 15-022A-SOUL_C86.DGN
 15-022A-SOUL_C87.DGN
 15-022A-SOUL_C88.DGN
 15-022A-SOUL_C89.DGN
 15-022A-SOUL_C90.DGN
 15-022A-SOUL_C91.DGN
 15-022A-SOUL_C92.DGN
 15-022A-SOUL_C93.DGN
 15-022A-SOUL_C94.DGN
 15-022A-SOUL_C95.DGN
 15-022A-SOUL_C96.DGN
 15-022A-SOUL_C97.DGN
 15-022A-SOUL_C98.DGN
 15-022A-SOUL_C99.DGN
 15-022A-SOUL_C100.DGN

JACKSONVILLE HARBOR, FLORIDA
ANNUAL EXAMINATION SURVEY FY15
30, 34, 38, 40 & 42-FOOT PROJECT
 STA. 50+00 CUT-51 THRU STA. 10+00 CUT-53
PLAN
 Scale: AS SHOWN
 Drawing no. **40**
 SHEET 40 OF 57

AIDS TO NAVIGATION	PLANE COORDINATES		LATITUDE	LONGITUDE
	X	Y		
14-000-000-000-000	457403	24159435	N30°24'52.74"	81°04'45.24"
14-000-000-000-000	458000	24160832	N30°24'48.56"	81°04'41.82"




NOTES:
 1. REFER TO SURVEY NO. 15-022.
 2. SEE SHEET NO. 1 FOR SURVEY NOTES.



AIDS TO NAVIGATION	PLANE COORDINATES		LATITUDE	LONGITUDE
	X	Y		
N. BUOY #1 (0115)	456.852	74105.057	30°22'22.022	81°03'48.101

GRAPHIC SCALE
 100' 0 100' 200'
 NOTES:
 1. REFER TO SURVEY NO. 15-022.
 2. SEE SHEET NO. 1 FOR SURVEY NOTES.



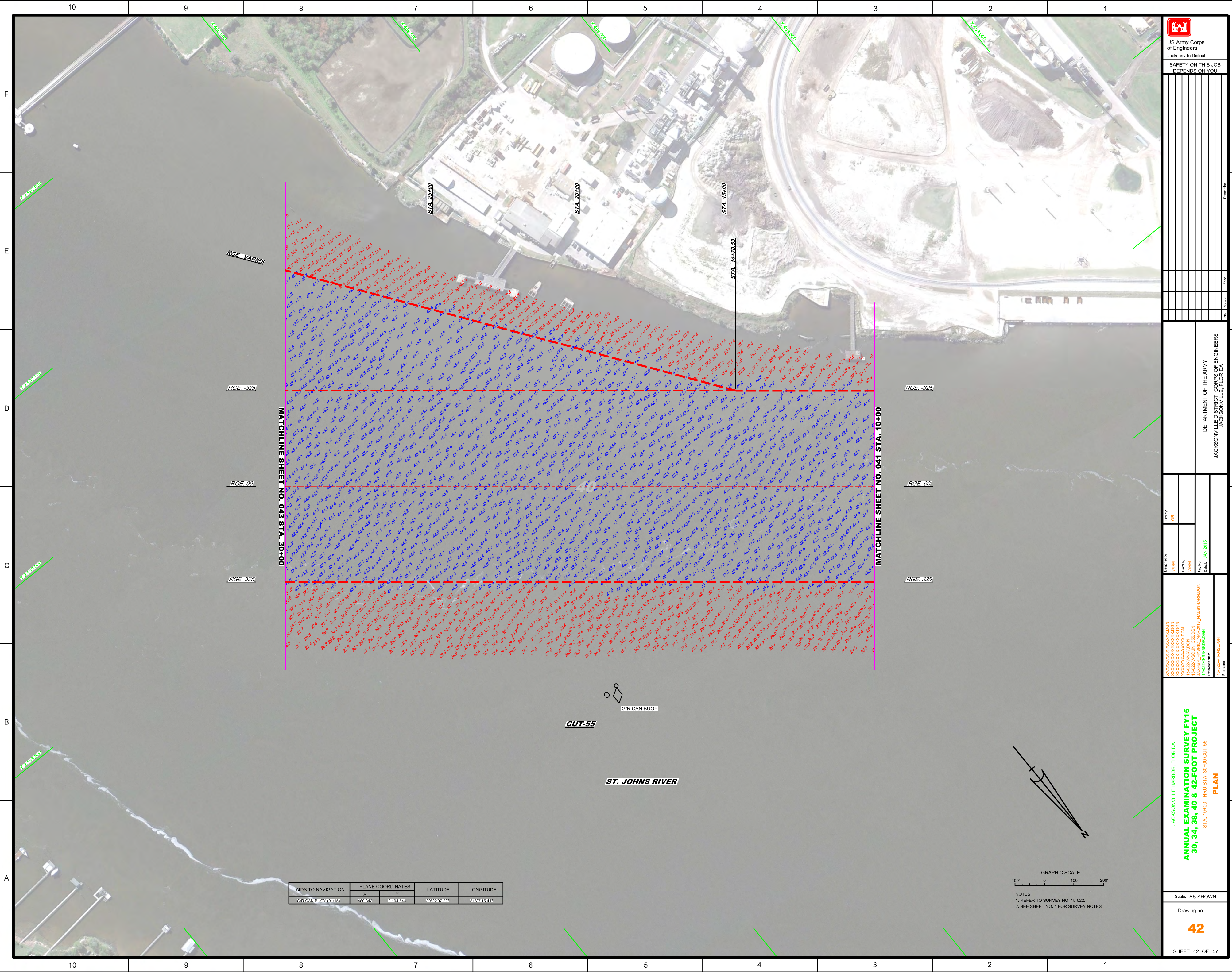
US Army Corps of Engineers
 Jacksonville District
**SAFETY ON THIS JOB
 DEPENDS ON YOU**

Designed by: WRM
 Drawn by: WRM
 Checked: JAW 2015

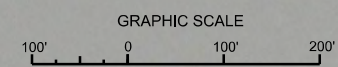
Scale: AS SHOWN
 Drawing no. **41**
 SHEET 41 OF 57

JACKSONVILLE HARBOR, FLORIDA
ANNUAL EXAMINATION SURVEY FY15
30, 34, 38, 40 & 42-FOOT PROJECT
 STA. 10+00 CUT-53 THRU STA. 10+00 CUT-55
PLAN


DEPARTMENT OF THE ARMY
 JACKSONVILLE DISTRICT, CORPS OF ENGINEERS
 JACKSONVILLE, FLORIDA



AIDS TO NAVIGATION	PLANE COORDINATES		LATITUDE	LONGITUDE
	X	Y		
G/R CAN BUOY (0115)	450.342	2194.544	30°22'07.22"	81°37'15.41"

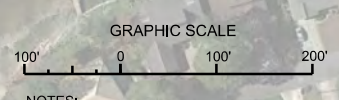
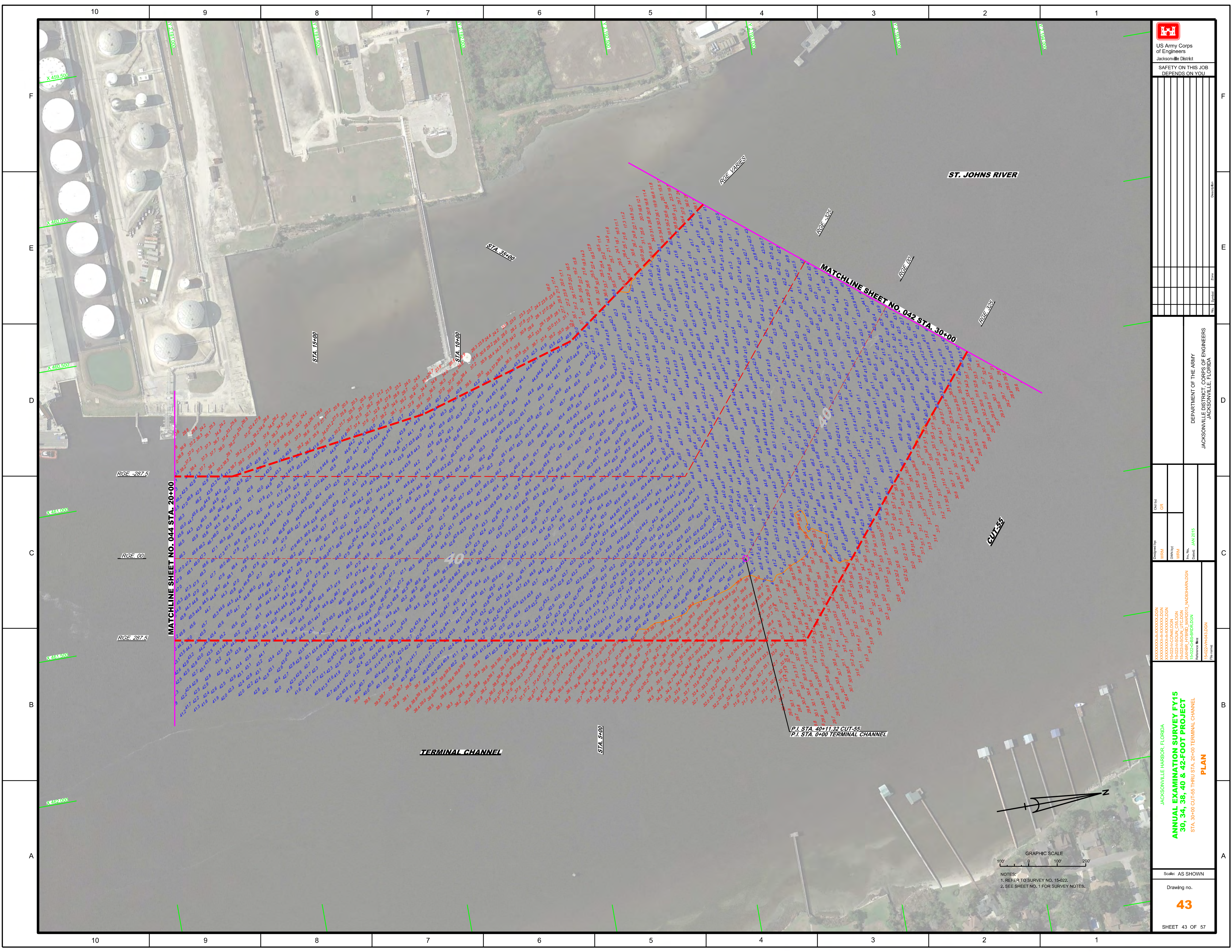


NOTES:
 1. REFER TO SURVEY NO. 15-022.
 2. SEE SHEET NO. 1 FOR SURVEY NOTES.



US Army Corps of Engineers
 Jacksonville District
 SAFETY ON THIS JOB
 DEPENDS ON YOU

JACKSONVILLE HARBOR, FLORIDA ANNUAL EXAMINATION SURVEY FY15 30, 34, 38, 40 & 42-FOOT PROJECT STA. 10+00 THRU STA. 30+00 CUT-55 PLAN	DEPARTMENT OF THE ARMY JACKSONVILLE DISTRICT, CORPS OF ENGINEERS JACKSONVILLE, FLORIDA
Drawn by: WRM Designated by: WRM Checked by: WRM Date: JAN 2015	Scale: AS SHOWN Drawing no. 42 SHEET 42 OF 57



NOTES:
1. REFER TO SURVEY NO. 15-022.
2. SEE SHEET NO. 1 FOR SURVEY NOTES.

MATCHLINE SHEET NO. 044 STA. 20+00

MATCHLINE SHEET NO. 042 STA. 30+00

TERMINAL CHANNEL

ST. JOHNS RIVER



RGE -287.5

RGE 0.0

RGE -287.5

CUT-55

P.I. STA. 40+11.32 CUT-55
P.I. STA. 0+00 TERMINAL CHANNEL

STA. 15+00

STA. 10+00

STA. 5+00

STA. 35+00

X 459.500

X 460.000

X 460.500

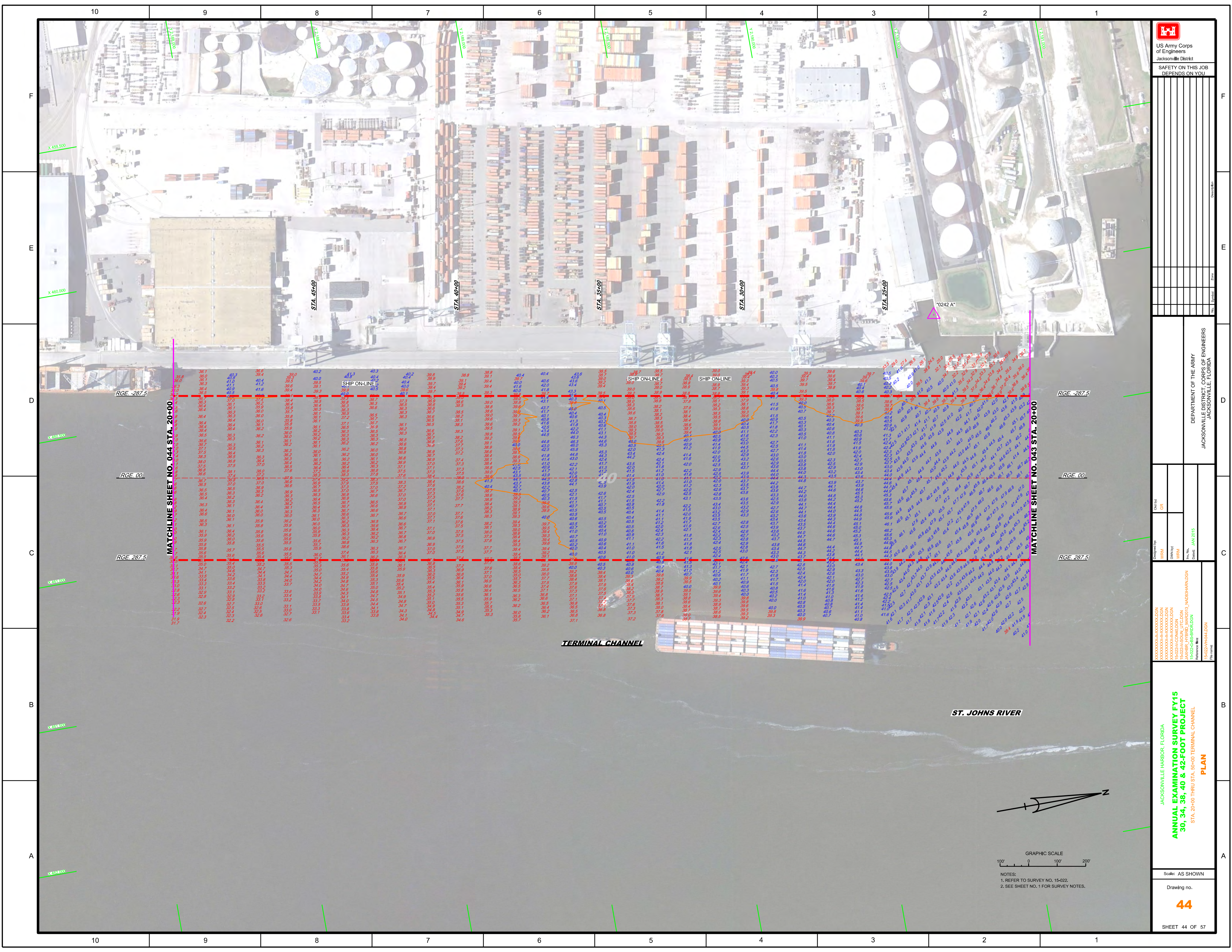
X 461.000


X 461.500

X 462.000

F
E
D
C
B
A

10 9 8 7 6 5 4 3 2 1





 US Army Corps of Engineers

 Jacksonville District

 SAFETY ON THIS JOB

 DEPENDS ON YOU

DEPARTMENT OF THE ARMY

 JACKSONVILLE DISTRICT CORPS OF ENGINEERS

 JACKSONVILLE, FLORIDA

Matchline Sheet No. 043 STA. 20+00

JACKSONVILLE HARBOR, FLORIDA

ANNUAL EXAMINATION SURVEY FY15

30, 34, 38, 40 & 42-FOOT PROJECT

 STA. 20+00 THRU STA. 30+00 TERMINAL CHANNEL

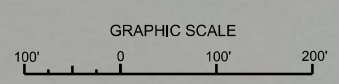
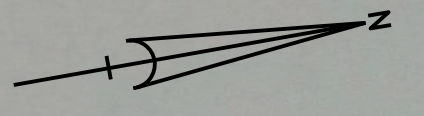
PLAN

 Scale: AS SHOWN

 Drawing No.

44

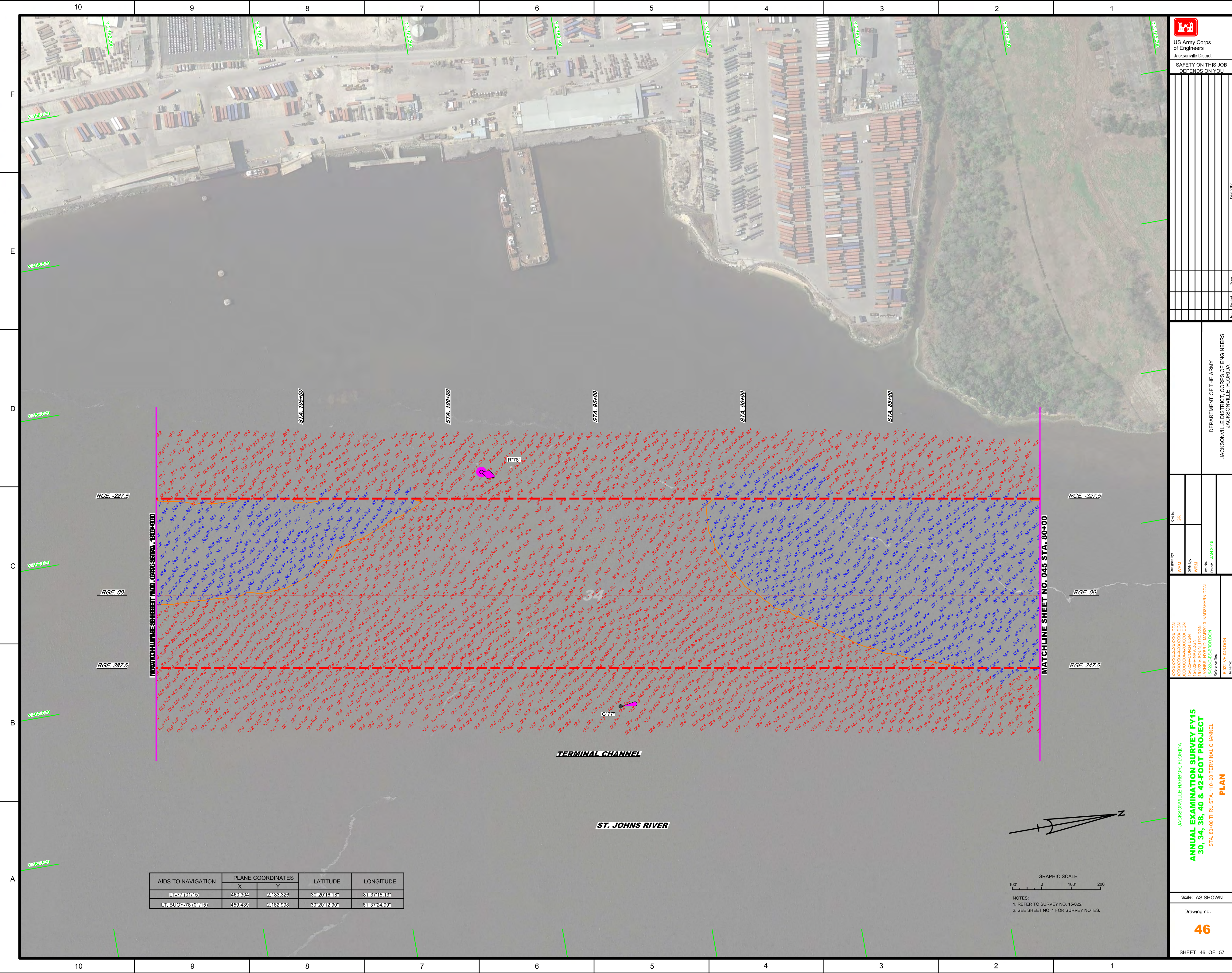
 SHEET 44 OF 57



NOTES:

 1. REFER TO SURVEY NO. 15-022.

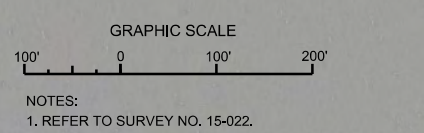
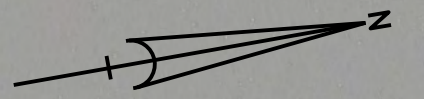
 2. SEE SHEET NO. 1 FOR SURVEY NOTES.



MATCHLINE SHEET NO. 045 STA. 80+00

MATCHLINE SHEET NO. 045 STA. 80+00

AIDS TO NAVIGATION	PLANE COORDINATES		LATITUDE	LONGITUDE
	X	Y		
LT 77 (0145)	460304	2483326	30°20'16.18"	81°37'45.13"
LT BUOY 78 (0145)	459439	2482898	30°20'42.90"	81°37'24.99"



US Army Corps of Engineers
Jacksonville District
SAFETY ON THIS JOB DEPENDS ON YOU

DESIGNED BY: WRM
CHECKED BY: GRL
DATE: JAN 2015

PROJECT: JACKSONVILLE HARBOR, FLORIDA
ANNUAL EXAMINATION SURVEY FY15
30, 34, 38, 40 & 42-FOOT PROJECT
PLAN
ST. 80+00 THRU STA. 110+00 TERMINAL CHANNEL

DEPARTMENT OF THE ARMY
JACKSONVILLE DISTRICT, CORPS OF ENGINEERS
JACKSONVILLE, FLORIDA

SHEET 46 OF 57



DEPARTMENT OF THE ARMY
 JACKSONVILLE DISTRICT, CORPS OF ENGINEERS
 JACKSONVILLE, FLORIDA

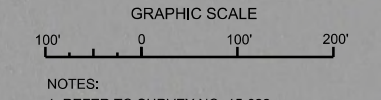
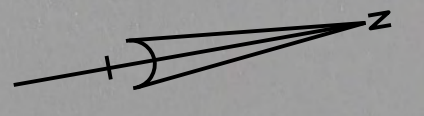
Check by: GR

Designed by: WRM, JMB
 Drawn by: WRM, JMB
 File Name: 15-0225-GB-SBI-R12.DGN
 Date Plotted: JAN 2015

JACKSONVILLE HARBOR, FLORIDA
 ANNUAL EXAMINATION SURVEY FY15
 30, 34, 38, 40 & 42-FOOT PROJECT
 STA. 110+00 THRU STA. 140+00 TERMINAL CHANNEL
PLAN

Scale: AS SHOWN
 Drawing no.
47

SHEET 47 OF 57



NOTES:
 1. REFER TO SURVEY NO. 15-022.
 2. SEE SHEET NO. 1 FOR SURVEY NOTES.