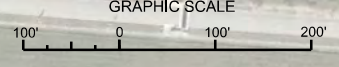
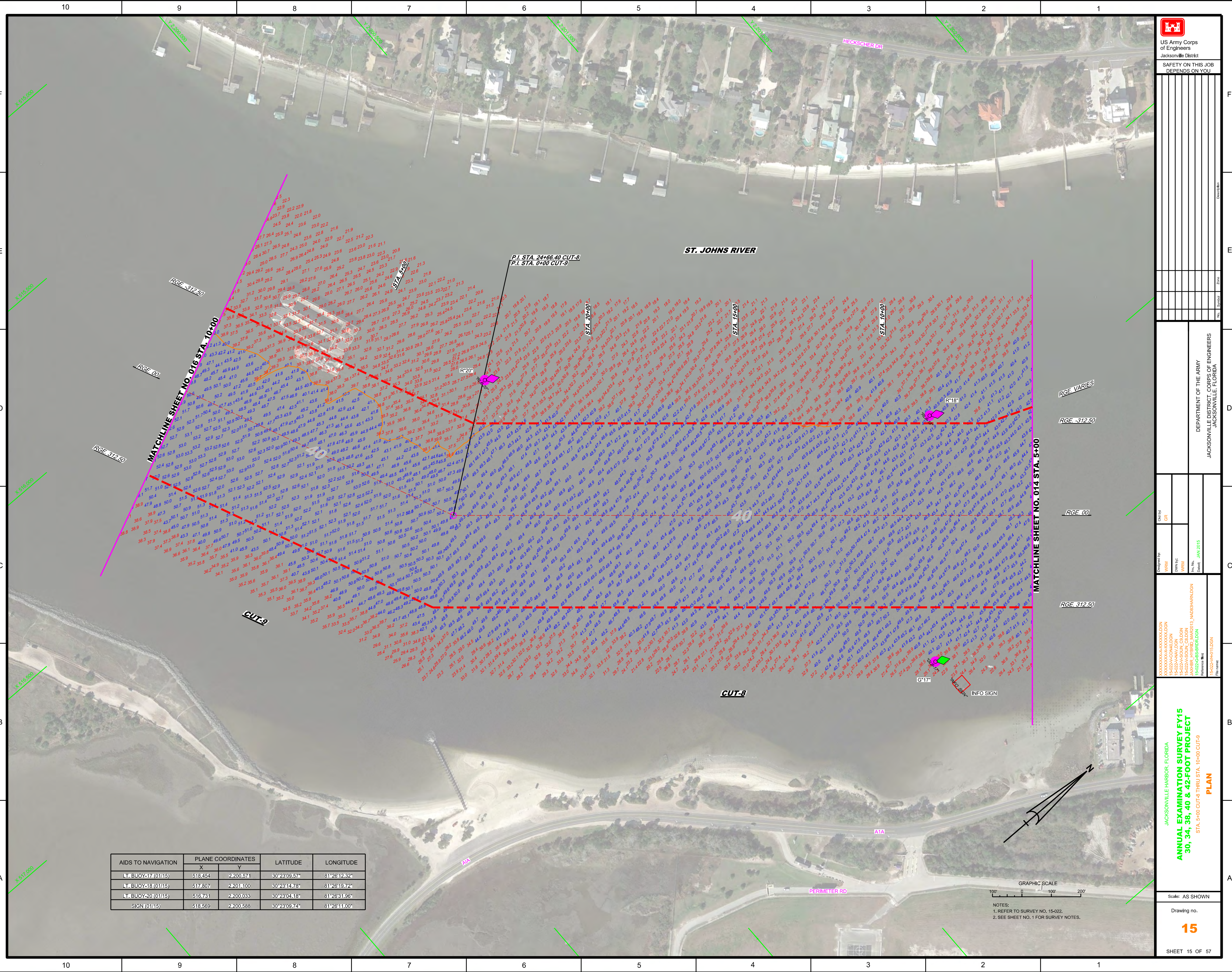


<p>US Army Corps of Engineers Jacksonville District</p>	
<p>SAFETY ON THIS JOB DEPENDS ON YOU</p>	
<p>DESIGNED BY: WRM CHECKED BY: GR DATE: JAN 2015</p>	
<p>PROJECT: ANNUAL EXAMINATION SURVEY FY15 30, 34, 38, 40 & 42-FOOT PROJECT</p>	
<p>CLIENT: DEPARTMENT OF THE ARMY JACKSONVILLE DISTRICT, CORPS OF ENGINEERS JACKSONVILLE, FLORIDA</p>	
<p>PROJECT NO: 15-022</p>	
<p>SCALE: AS SHOWN</p>	
<p>DRAWING NO: 14</p>	
<p>SHEET 14 OF 57</p>	

AIDS TO NAVIGATION	PLANE COORDINATES		LATITUDE	LONGITUDE
	X	Y		
LT. BUOY-17 (0115)	518.454	2200.571	30°23'09.57"	81°26'12.32"
LT. BUOY-18 (0115)	517.807	2201.100	30°23'14.76"	81°26'19.72"
LT. BUOY-20 (0115)	516.731	2200.033	30°23'04.16"	81°26'31.56"
SIGN (0115)	518.569	2200.588	30°23'09.74"	81°26'11.00"



NOTES:
1. REFER TO SURVEY NO. 15-222.
2. SEE SHEET NO. 1 FOR SURVEY NOTES.



ST. JOHNS RIVER

HECKSCHER DR

PERIMETER RD

ATA

CUT-8

CUT-9

STA. 5+00

STA. 10+00

RGE. 312.50

RGE. 00

RGE. VARIES

MATCHLINE SHEET NO. 016 STA. 10+00

MATCHLINE SHEET NO. 014 STA. 5+00

INFO SIGN

GRAPHIC SCALE

NOTES:

AIDS TO NAVIGATION	PLANE COORDINATES		LATITUDE	LONGITUDE
	X	Y		
LT BUOY 22 (0115)	514.735	2,198.989	30°22'53.77"	81°26'54.71"
SIGN (01145)	514.643	2,198.004	30°22'44.01"	81°26'55.71"

US Army Corps of Engineers
Jacksonville District

SAFETY ON THIS JOB
DEPENDS ON YOU

DESIGNED BY: WRM
CHECKED BY: GRL
DATE: JAN 2015

PROJECT: ANNUAL EXAMINATION SURVEY FY15
30, 34, 38, 40 & 42-FOOT PROJECT

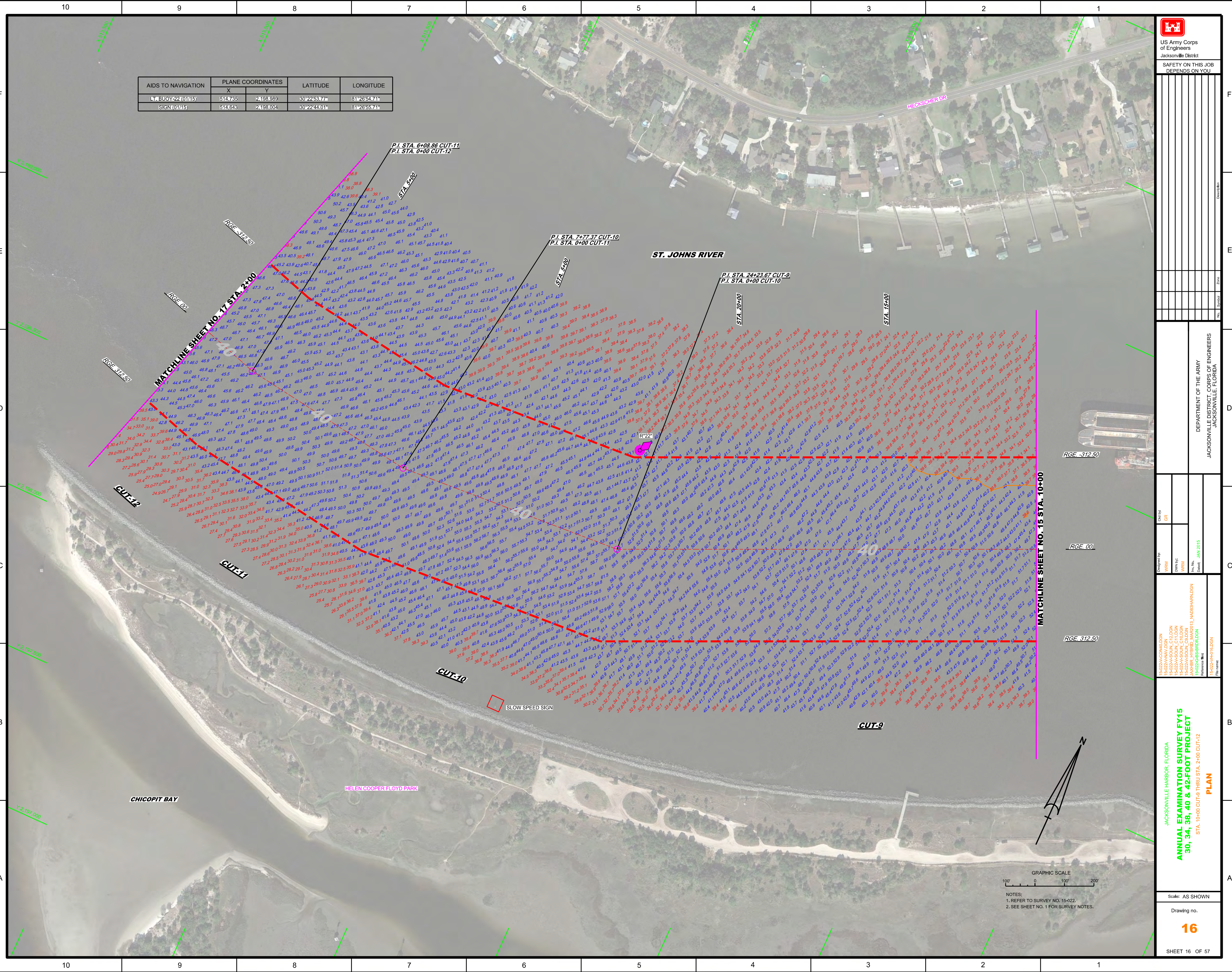
STATIONING: STA. 10+00 CUT-9 THRU STA. 2+00 CUT-12

PLAN

Scale: AS SHOWN

Drawing No. 16

SHEET 16 OF 57



GRAPHIC SCALE
100' 0 100 200

NOTES:
1. REFER TO SURVEY NO. 15-022.
2. SEE SHEET NO. 1 FOR SURVEY NOTES.

DEPARTMENT OF THE ARMY
JACKSONVILLE DISTRICT, CORPS OF ENGINEERS
JACKSONVILLE, FLORIDA

DESIGNED BY: WRM
CHECKED BY: GRL
DATE: JAN 2015

PROJECT: ANNUAL EXAMINATION SURVEY FY15
30, 34, 38, 40 & 42-FOOT PROJECT

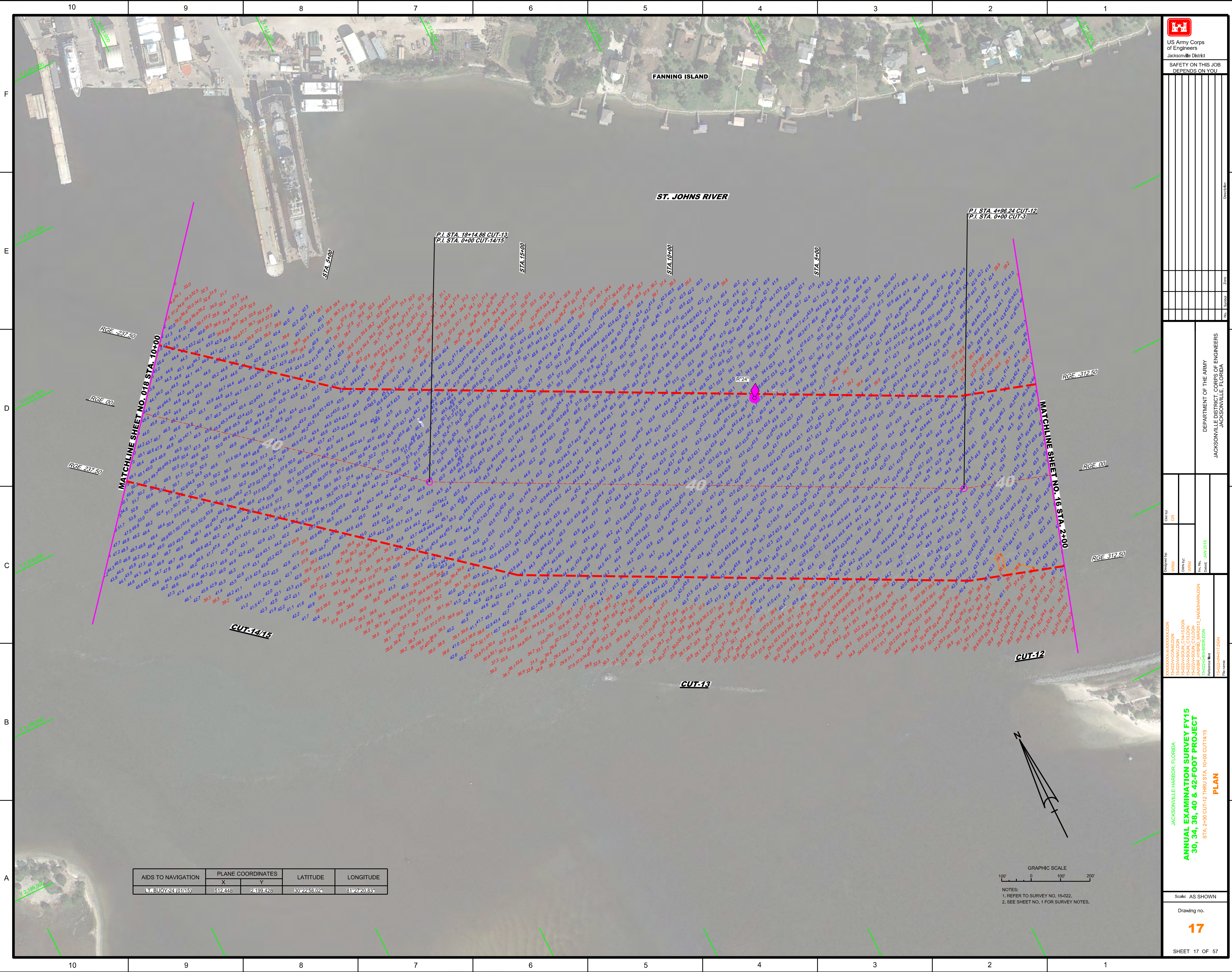
STATIONING: STA. 10+00 CUT-9 THRU STA. 2+00 CUT-12

PLAN

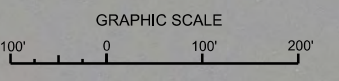
Scale: AS SHOWN

Drawing No. 16


SHEET 16 OF 57



AIDS TO NAVIGATION	PLANE COORDINATES		LATITUDE	LONGITUDE
	X	Y		
LT BUOY 24 (01145)	512,448	2,199,428	30°22'58.02"	81°27'20.83"



NOTES:
 1. REFER TO SURVEY NO. 15-022.
 2. SEE SHEET NO. 1 FOR SURVEY NOTES.



US Army Corps of Engineers
 Jacksonville District
 SAFETY ON THIS JOB
 DEPENDS ON YOU

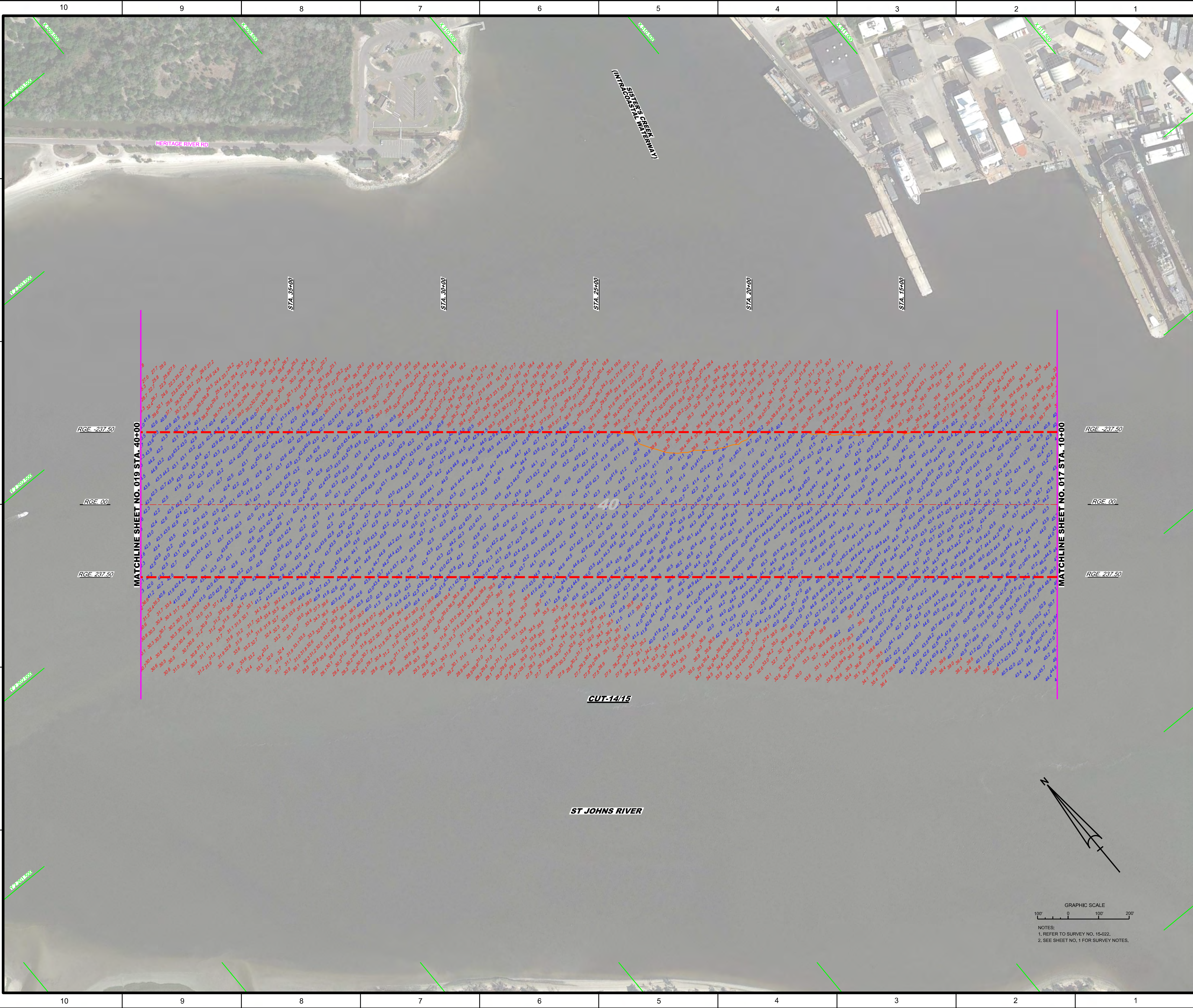
DEPARTMENT OF THE ARMY
 JACKSONVILLE DISTRICT, CORPS OF ENGINEERS
 JACKSONVILLE, FLORIDA

Checked By: GRL
 Drawn By: WRM
 Project No: WRM
 Date: JAN 2015

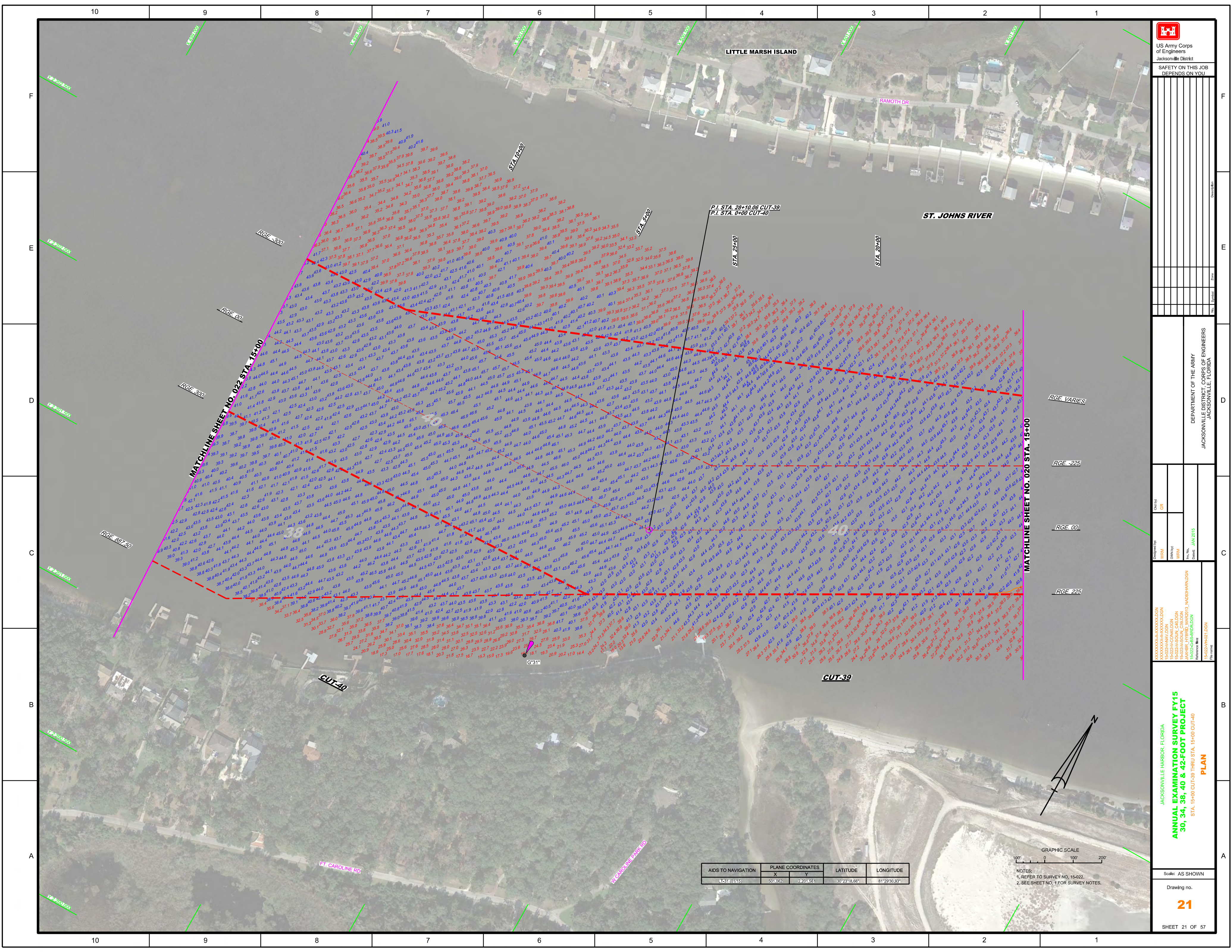
XXXXXXXXXXXXXXXXXXXX
 15-022-A-0000000000
 15-022-A-SOUL_C14-1500N
 15-022-A-SOUL_C13-00N
 15-022-A-SOUL_C12-00N
 15-022-A-SOUL_C11-00N
 15-022-A-SOUL_C10-00N
 15-022-A-SOUL_C09-00N
 15-022-A-SOUL_C08-00N
 15-022-A-SOUL_C07-00N
 15-022-A-SOUL_C06-00N
 15-022-A-SOUL_C05-00N
 15-022-A-SOUL_C04-00N
 15-022-A-SOUL_C03-00N
 15-022-A-SOUL_C02-00N
 15-022-A-SOUL_C01-00N
 15-022-A-SOUL_C00-00N

JACKSONVILLE HARBOR, FLORIDA
ANNUAL EXAMINATION SURVEY FY15
30, 34, 38, 40 & 42-FOOT PROJECT
 STA. 2+00 CUT-12 THRU STA. 10+00 CUT-14/15
PLAN

Scale: AS SHOWN
 Drawing no.
17
 SHEET 17 OF 57



<p>US Army Corps of Engineers Jacksonville District</p>	
<p>SAFETY ON THIS JOB DEPENDS ON YOU</p>	
<p>Project Name: ANNUAL EXAMINATION SURVEY FY15 30, 34, 38, 40 & 42-FOOT PROJECT</p>	<p>Department: DEPARTMENT OF THE ARMY JACKSONVILLE DISTRICT, CORPS OF ENGINEERS JACKSONVILLE, FLORIDA</p>
<p>Drawn by: WRM</p> <p>Checked by: GRL</p>	<p>Date: JAN 2015</p>
<p>Scale: AS SHOWN</p>	<p>Drawing no. 18</p>
<p>SHEET 18 OF 57</p>	



US Army Corps of Engineers
 Jacksonville District
SAFETY ON THIS JOB DEPENDS ON YOU

DEPARTMENT OF THE ARMY
 JACKSONVILLE DISTRICT, CORPS OF ENGINEERS
 JACKSONVILLE, FLORIDA

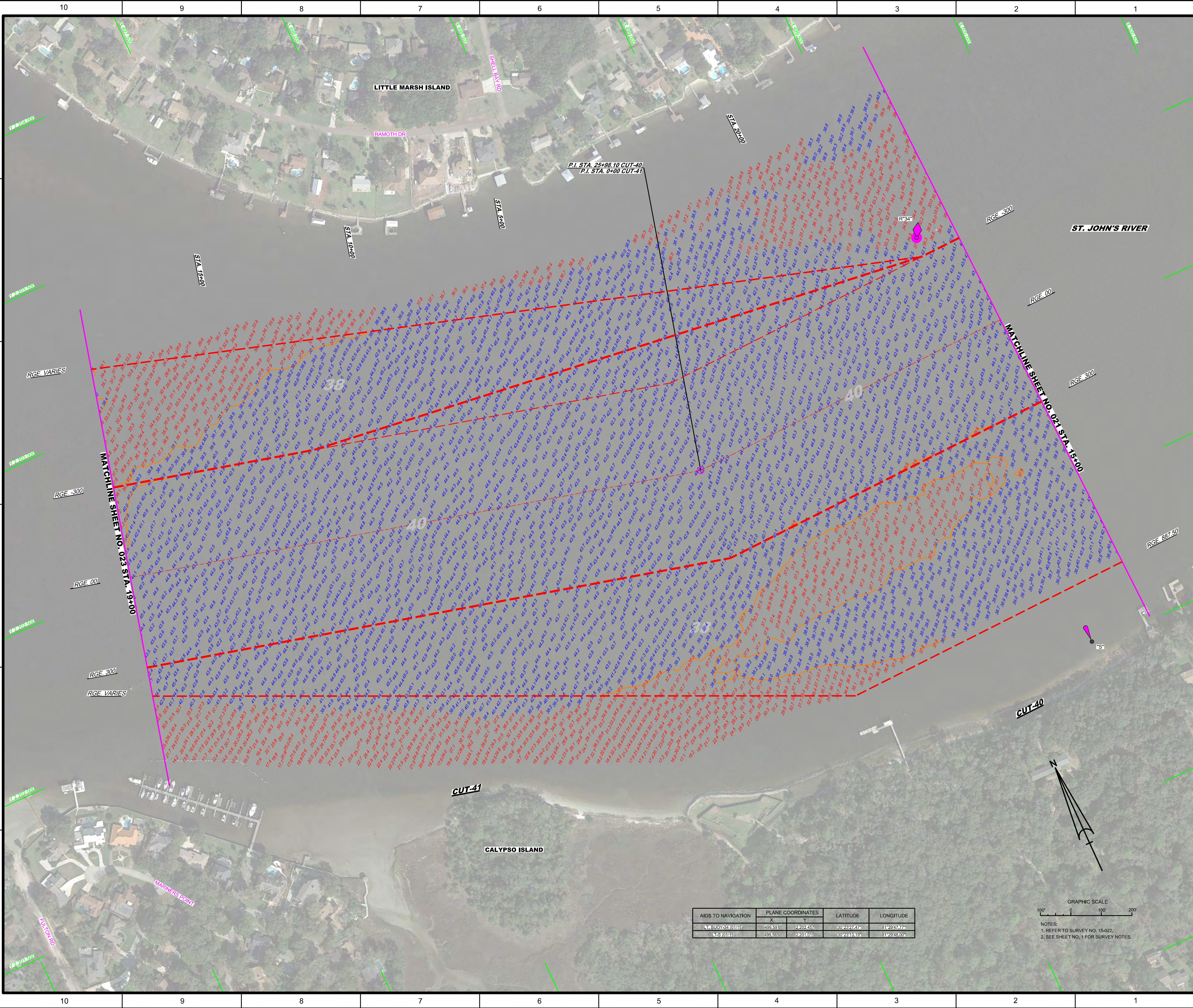
Designated By: **WRM**
 Checked By: **GR**
 Date: **JAN 2015**

JACKSONVILLE HARBOR, FLORIDA
ANNUAL EXAMINATION SURVEY FY15
30, 34, 38, 40 & 42-FOOT PROJECT
 STA. 15+00 CUT-39 THRU STA. 15+00 CUT-40
PLAN

Scale: AS SHOWN
 Drawing No. **21**
 SHEET 21 OF 57

AIDS TO NAVIGATION	PLANE COORDINATES		LATITUDE	LONGITUDE
	X	Y		
1L-31(01M5)	501.092	2-201.551	30°23'18.66"	81°29'30.93"

GRAPHIC SCALE
 0 100 200'
 NOTES:
 1. REFER TO SURVEY NO. 15-022.
 2. SEE SHEET NO. 1 FOR SURVEY NOTES.



P.I. STA. 25+98.10 CUT-40
P.I. STA. 0+00 CUT-41

LITTLE MARSH ISLAND

RAMOTH DR

STA. 20+00

STA. 5+00

STA. 10+00

STA. 15+00

ST. JOHN'S RIVER

RGE. 00

RGE. 300

RGE. 300

RGE. 887.50

CUT-40

CUT-41

CALYPSO ISLAND

MARINERS POINT

PL. STA. 0+00

AIDS TO NAVIGATION	PLANE COORDINATES		LATITUDE	LONGITUDE
	X	Y		
4-LEUDY54 (0715)	499591	2202457	33°23'24.77"	81°29'47.77"
4-LES (0715)	499555	2203105	33°23'34.91"	81°29'48.00"

GRAPHIC SCALE
100' 0 100' 200'

NOTES:
1. REFER TO SURVEY NO. 15-022.
2. SEE SHEET NO. 1 FOR SURVEY NOTES.

US Army Corps of Engineers
Jacksonville District

SAFETY ON THIS JOB
DEPENDS ON YOU

<p>Checked By: GR</p> <p>Designed By: WRM</p> <p>Drawn By: WRM</p> <p>Date: JAN 2015</p> <p>Reference Map: 15-022-GE-S-BIRDSON</p> <p>File Name: 15-022-HAZZLEN</p>	<p>DEPARTMENT OF THE ARMY JACKSONVILLE DISTRICT CORPS OF ENGINEERS JACKSONVILLE, FLORIDA</p> <p>PROJECT TITLE: ANNUAL EXAMINATION SURVEY FY15 30, 34, 38, 40 & 42-FOOT PROJECT</p> <p>PLAN STA. 15+00 CUT-40 THRU STA. 19+00 CUT-41</p> <p>Scale: AS SHOWN</p> <p>Drawing no. 22</p> <p>SHEET 22 OF 57</p>
---	--

AIDS TO NAVIGATION	PLANE COORDINATES		LATITUDE	LONGITUDE
	X	Y		
BUOY 35 (0115)	494.50	2202.24	83°23'25.19"	81°40'23.03"
BUOY 36 (0115)	494.50	2203.45	83°23'25.19"	81°40'23.03"
BUOY 37 (0115)	494.55	2202.83	83°23'25.19"	81°40'23.03"

BLOUNT ISLAND

BACK RIVER

ST. JOHNS RIVER

CALYPSO ISLAND

BIMT 101

P.I. STA. 33+94.49 CUT-41

P.I. STA. 0+00 CUT-42

MATCHLINE SHEET NO. 050 STA. 14+00

MATCHLINE SHEET NO. 024 STA. 13+00

MATCHLINE SHEET NO. 022 STA. 19+00

RGE. -237.50

RGE. 00

RGE. 237.50

RGE. VARIES

RGE. VARIES

RGE. 300

RGE. 00

RGE. 300

RGE. VARIES

STA. 10+00

STA. 5+00

STA. 10+00 (CUT-A)

STA. 5+00 (CUT-A)

STA. 0+00 (CUT-A)

STA. 20+00 (CUT-A)

STA. 20+00 (CUT-A)

STA. 3+44.95 (CUT-42)

RGE. 499.99

STA. 32+42.08 (CUT-41)

RGE. 420.22

G37

G35

MOTOR YACHT DRN

KINGSLEY MANOR WAY

LAUREL GREEN WAY

MAYBANK WAY



GRAPHIC SCALE

NOTES:
1. REFER TO SURVEY NO. 15-022.
2. SEE SHEET NO. 1 FOR SURVEY NOTES.

US Army Corps of Engineers
Jacksonville District

SAFETY ON THIS JOB
DEPENDS ON YOU

Author	GR
Checked By	GR
Designed By	WRM
Drawn By	WRM
Field Notes	WRM
Date	JAN 2015

DEPARTMENT OF THE ARMY
JACKSONVILLE DISTRICT CORPS OF ENGINEERS
JACKSONVILLE, FLORIDA

15-022-ANVZ.DGN
15-022-CON.DGN
15-022-SOON.CTA1.DGN
15-022-SOON.CAT1.DGN
15-022-SOON.CAT2.DGN
15-022-SOON.CAT3.DGN
15-022-SOON.CAT4.DGN
15-022-SOON.CAT5.DGN
15-022-SOON.CAT6.DGN
15-022-SOON.CAT7.DGN
15-022-SOON.CAT8.DGN
15-022-SOON.CAT9.DGN
15-022-SOON.CAT10.DGN
15-022-SOON.CAT11.DGN
15-022-SOON.CAT12.DGN
15-022-SOON.CAT13.DGN
15-022-SOON.CAT14.DGN
15-022-SOON.CAT15.DGN
15-022-SOON.CAT16.DGN
15-022-SOON.CAT17.DGN
15-022-SOON.CAT18.DGN
15-022-SOON.CAT19.DGN
15-022-SOON.CAT20.DGN
15-022-SOON.CAT21.DGN
15-022-SOON.CAT22.DGN
15-022-SOON.CAT23.DGN
15-022-SOON.CAT24.DGN
15-022-SOON.CAT25.DGN
15-022-SOON.CAT26.DGN
15-022-SOON.CAT27.DGN
15-022-SOON.CAT28.DGN
15-022-SOON.CAT29.DGN
15-022-SOON.CAT30.DGN
15-022-SOON.CAT31.DGN
15-022-SOON.CAT32.DGN
15-022-SOON.CAT33.DGN
15-022-SOON.CAT34.DGN
15-022-SOON.CAT35.DGN
15-022-SOON.CAT36.DGN
15-022-SOON.CAT37.DGN
15-022-SOON.CAT38.DGN
15-022-SOON.CAT39.DGN
15-022-SOON.CAT40.DGN
15-022-SOON.CAT41.DGN
15-022-SOON.CAT42.DGN
15-022-SOON.CAT43.DGN
15-022-SOON.CAT44.DGN
15-022-SOON.CAT45.DGN
15-022-SOON.CAT46.DGN
15-022-SOON.CAT47.DGN
15-022-SOON.CAT48.DGN
15-022-SOON.CAT49.DGN
15-022-SOON.CAT50.DGN
15-022-SOON.CAT51.DGN
15-022-SOON.CAT52.DGN
15-022-SOON.CAT53.DGN
15-022-SOON.CAT54.DGN
15-022-SOON.CAT55.DGN
15-022-SOON.CAT56.DGN
15-022-SOON.CAT57.DGN
15-022-SOON.CAT58.DGN
15-022-SOON.CAT59.DGN
15-022-SOON.CAT60.DGN
15-022-SOON.CAT61.DGN
15-022-SOON.CAT62.DGN
15-022-SOON.CAT63.DGN
15-022-SOON.CAT64.DGN
15-022-SOON.CAT65.DGN
15-022-SOON.CAT66.DGN
15-022-SOON.CAT67.DGN
15-022-SOON.CAT68.DGN
15-022-SOON.CAT69.DGN
15-022-SOON.CAT70.DGN
15-022-SOON.CAT71.DGN
15-022-SOON.CAT72.DGN
15-022-SOON.CAT73.DGN
15-022-SOON.CAT74.DGN
15-022-SOON.CAT75.DGN
15-022-SOON.CAT76.DGN
15-022-SOON.CAT77.DGN
15-022-SOON.CAT78.DGN
15-022-SOON.CAT79.DGN
15-022-SOON.CAT80.DGN
15-022-SOON.CAT81.DGN
15-022-SOON.CAT82.DGN
15-022-SOON.CAT83.DGN
15-022-SOON.CAT84.DGN
15-022-SOON.CAT85.DGN
15-022-SOON.CAT86.DGN
15-022-SOON.CAT87.DGN
15-022-SOON.CAT88.DGN
15-022-SOON.CAT89.DGN
15-022-SOON.CAT90.DGN
15-022-SOON.CAT91.DGN
15-022-SOON.CAT92.DGN
15-022-SOON.CAT93.DGN
15-022-SOON.CAT94.DGN
15-022-SOON.CAT95.DGN
15-022-SOON.CAT96.DGN
15-022-SOON.CAT97.DGN
15-022-SOON.CAT98.DGN
15-022-SOON.CAT99.DGN
15-022-SOON.CAT100.DGN

JACKSONVILLE HARBOR, FLORIDA

ANNUAL EXAMINATION SURVEY FY15
30, 34, 38, 40 & 42-FOOT PROJECT
STA. 19+00 CUT-41 THRU STA 13+00 CUT-42 & STA. 0+00 THRU STA. 14+00 CUT-A

PLAN

Scale: AS SHOWN

Drawing no. **23**

SHEET 23 OF 57