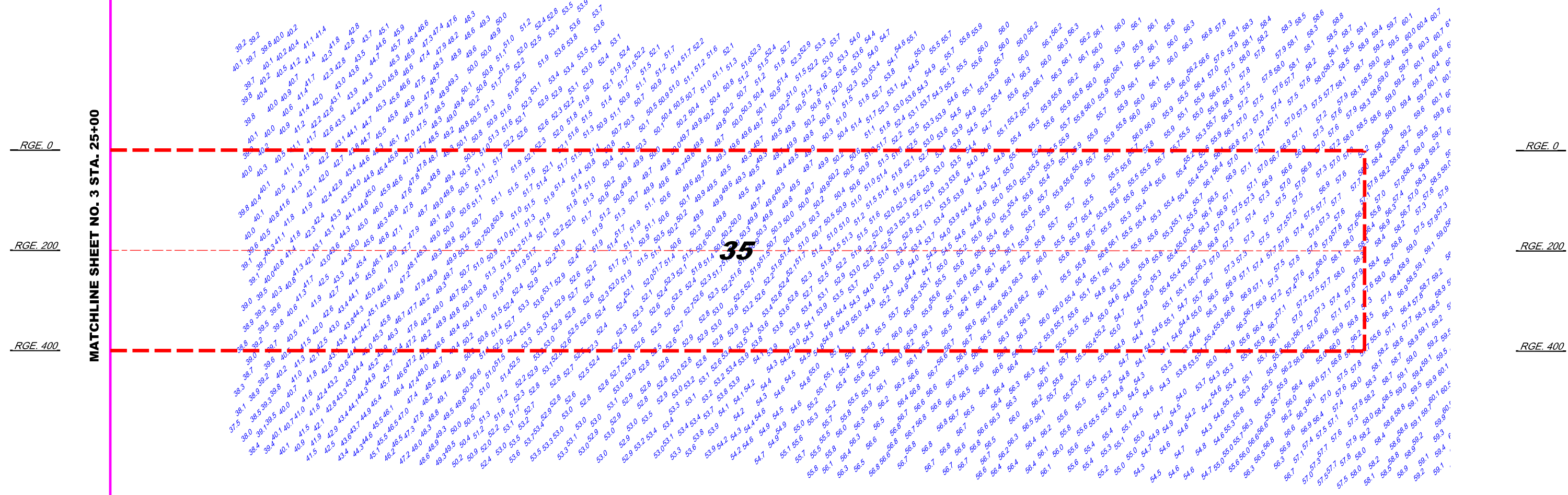


MATCHLINE SHEET NO. 3 STA. 25+00



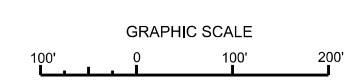
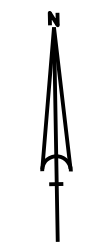
**SURVEY NOTES:**

- REFER TO SURVEY NO. 15-008.
- DEPTHS DEPICTED BY THIS SURVEY ARE REFERENCED TO MLLW, TIDAL EPOCH 1983-2001, AS REPORTED BY THE NATIONAL OCEANIC AND ATMOSPHERIC ADMINISTRATION (NOAA). NOAA'S VDATUM WAS USED AND CALIBRATED TO THE PUBLISHED MLLW HEIGHTS OF THE BENCHMARKS ASSOCIATED WITH THE TIDE GAGE SITE SPECIFIED BELOW:  
  
NOAA TIDAL STATION 872-2588, PORT OF W. PALM BEACH, LAKE WORTH
- ALL ELEVATIONS ARE BELOW THE CHART DATUM UNLESS PRECEDED BY A (+) SIGN.
- TIDAL REDUCTIONS WERE OBTAINED USING REAL-TIME KINEMATIC (RTK) GPS AND UTILIZING A HYPACK KINEMATIC TIDAL DATUM (KTD) MODEL FILE BASED ON NOAA'S VDATUM. FILE NAME: PALM BEACH-BROWARD\_20140529.KTD.
- PLANE COORDINATES ARE BASED ON THE TRANSVERSE MERCATOR PROJECTION FOR THE EAST ZONE OF FLORIDA AND REFERENCED TO NORTH AMERICAN DATUM OF 1983.
- ALL AZIMUTHS ARE GRID; RECKONED CLOCKWISE FROM SOUTH.
- ALL STATIONING REFERS TO THE CENTERLINE OF THE CHANNEL.
- THIS SURVEY WAS PERFORMED USING REAL-TIME KINEMATIC GPS POSITIONING WITH THE FOLLOWING REFERENCE BASE LOCATION:  
  
REFERENCE BASE LOCATED AT "WOLFE" (OPUS PID# BBB246)  
  
TIDE STAFF LOCATED FROM "A 310" (PID: AD2870)

**ENTRANCE CHANNEL**

- VERTICAL MEASUREMENTS WERE MADE USING AN R2SONIC 2020 MULTI-BEAM SYSTEM OPERATING AT 240 KHZ. SOUNDINGS SHOWN ARE IN HIGH FREQUENCY.
- AIDS TO NAVIGATION WERE LOCATED DURING SURVEY.
- THE INFORMATION DEPICTED ON THIS MAP REPRESENTS THE RESULTS OF SURVEYS MADE ON THE DATES INDICATED ABOVE AND CAN ONLY BE CONSIDERED AS INDICATING THE GENERAL CONDITIONS AT THAT TIME. THIS CHART IS SOLELY FOR THE DISTRIBUTION OF AVAILABLE DEPTHS AT THE TIME OF THE SURVEY.
- SURVEY ACCURACY PERFORMANCE STANDARDS, QUALITY CONTROL, AND QUALITY ASSURANCE REQUIREMENTS WERE FOLLOWED DURING THIS SURVEY IN ACCORDANCE WITH USACE EM 1110-2-1003, HYDROGRAPHIC SURVEYING, 30 NOV 13.

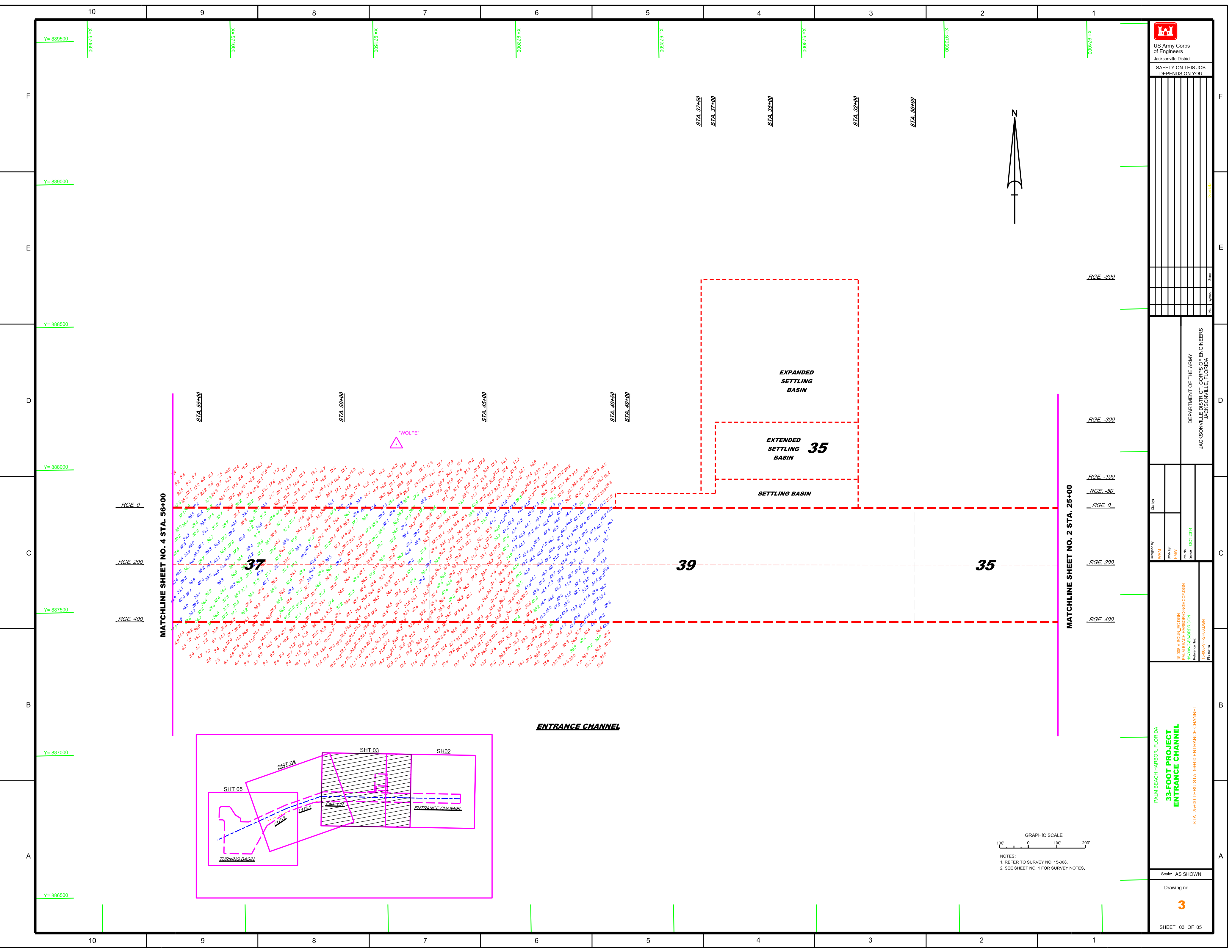
VESSEL	DATE OF SURVEY	CUT
SB-48	22 OCT 2014	ENTRANCE CHANNEL



DEPARTMENT OF THE ARMY  
JACKSONVILLE DISTRICT, CORPS OF ENGINEERS  
JACKSONVILLE, FLORIDA

33-FOOT PROJECT  
ENTRANCE CHANNEL  
STA. 0+00 THRU STA. 25+00 ENTRANCE CHANNEL

Scale: AS SHOWN  
Drawing no. **2**  
SHEET 02 OF 05



MATCHLINE SHEET NO. 4 STA. 56+00

MATCHLINE SHEET NO. 2 STA. 25+00

RGE. 0  
 RGE. 200  
 RGE. 400

STA. 55+00  
 STA. 50+00  
 STA. 45+00  
 STA. 40+00  
 STA. 37+00

EXPANDED  
 SETTLING  
 BASIN

EXTENDED  
 SETTLING  
 BASIN 35

SETTLING  
 BASIN

37  
 39  
 35

WOLFE

ENTRANCE CHANNEL

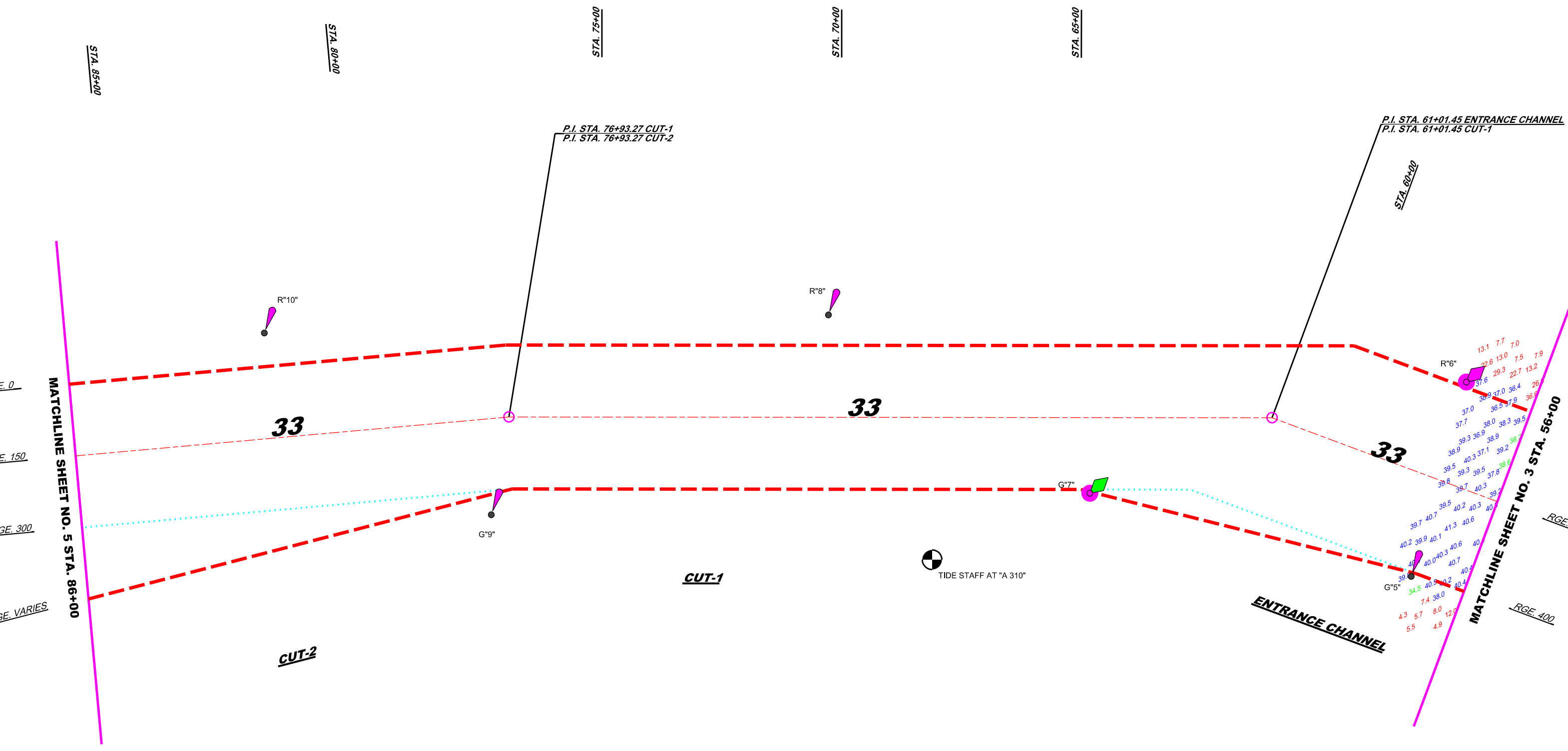
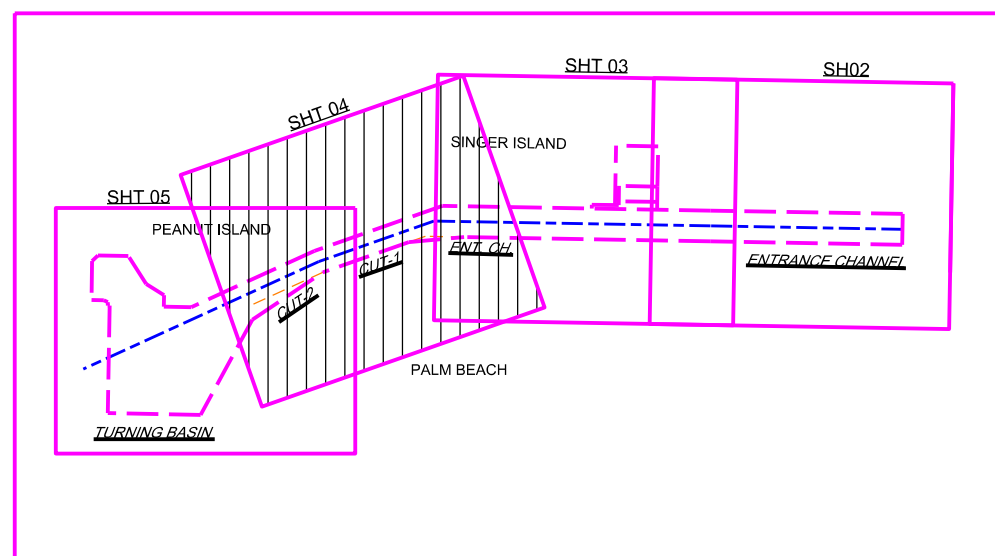
TURNING BASIN

SHT.05  
 SHT.04  
 SHT.03  
 SH02

<p>US Army Corps of Engineers Jacksonville District</p>	
<p>SAFETY ON THIS JOB DEPENDS ON YOU</p>	
<p>Project No. _____</p>	<p>Zone _____</p>
<p>Contract No. _____</p>	<p>Scale _____</p>
<p>Drawn By: _____</p>	<p>Checked By: _____</p>
<p>15-000A-SOUL_ECD.DGN PALM BEACH HARBOR-ANGMCCF.DGN 10/08/04-SS-01.DGN 10/08/04-SS-02.DGN</p>	<p>DEPARTMENT OF THE ARMY JACKSONVILLE DISTRICT, CORPS OF ENGINEERS JACKSONVILLE, FLORIDA</p>
<p>15-000A-SOUL_ECD.DGN PALM BEACH HARBOR-ANGMCCF.DGN 10/08/04-SS-01.DGN 10/08/04-SS-02.DGN</p>	<p>DATE: OCT 2014</p>
<p>PALM BEACH HARBOR, FLORIDA 33-FOOT PROJECT ENTRANCE CHANNEL STA. 25+00 THRU STA. 56+00 ENTRANCE CHANNEL</p>	<p>Scale: AS SHOWN</p>
<p>Drawing no. <b>3</b></p>	<p>SHEET 03 OF 05</p>

GRAPHIC SCALE  
 100' 0 100' 200'  
 NOTES:  
 1. REFER TO SURVEY NO. 15-008.  
 2. SEE SHEET NO. 1 FOR SURVEY NOTES.

AIDS TO NAVIGATION	PLANE COORDINATES		LATITUDE	LONGITUDE
	X	Y		
LT-5 (09/14)	970.649	887.455	26°46'18.90"	80°02'10.19"
LT.BUOY-6 (09/14)	970.623	887.875	26°46'23.07"	80°02'10.44"
LT.BUOY-7 (09/14)	969.959	887.396	26°46'18.37"	80°02'17.81"
LT-8 (09/14)	969.321	887.565	26°46'20.10"	80°02'24.83"
LT-9 (09/14)	968.796	886.939	26°46'13.93"	80°02'30.67"
LT-10 (09/14)	968.224	887.139	26°46'15.96"	80°02'36.97"



TIDE STAFF AT 'A 310'

GRAPHIC SCALE  
 100' 0 100' 200'  
 NOTES:  
 1. REFER TO SURVEY NO. 15-008.  
 2. SEE SHEET NO. 1 FOR SURVEY NOTES.

US Army Corps of Engineers  
 Jacksonville District  
 SAFETY ON THIS JOB  
 DEPENDS ON YOU

DEPARTMENT OF THE ARMY  
 JACKSONVILLE DISTRICT, CORPS OF ENGINEERS  
 JACKSONVILLE, FLORIDA

DESIGNED BY: WRM  
 DRAWN BY: FHW  
 FILE NO.: 15-008-1-1-1-1  
 DATE: OCT 2014

15-008-1-1-1-1 DGN  
 15-008-1-1-1-1 DGN  
 15-008-1-1-1-1 DGN  
 15-008-1-1-1-1 DGN  
 15-008-1-1-1-1 DGN

PALM BEACH HARBOR, FLORIDA  
**33-FOOT PROJECT  
 ENTRANCE CHANNEL**  
 STA. 56+00 ENTRANCE CHANNEL THRU STA. 86+00 CUT-2

Scale: AS SHOWN

Drawing no.  
**4**

SHEET 04 OF 05