

ALAFIA RIVER (TAMPA HARBOR ZONE 8) HILLSBOROUGH COUNTY, FLORIDA EXAMINATION SURVEY FY14 33 AND 34-FOOT PROJECT

SURVEY NOTES

- REFER TO SURVEY NO. 14-162.
- DEPTHS DEPICTED BY THIS SURVEY ARE REFERENCED TO MEAN LOWER LOW WATER (MLLW), TIDAL EPOCH 1983-2001 AS REPORTED BY THE NATIONAL OCEANIC AND ATMOSPHERIC ADMINISTRATION (NOAA). NOAA'S VDATUM MODEL WAS USED AND CALIBRATED TO THE PUBLISHED MLLW HEIGHTS OF THE BENCH MARKS ASSOCIATED WITH THE TIDE GAGE SITE SPECIFIED BELOW:

NOAA TIDAL STATION 872-6667, DAVIS ISLAND, HILLSBOROUGH BAY FOR ALL CUTS (PID: AG6024)
- TIDAL REDUCTIONS WERE OBTAINED UTILIZING A REAL-TIME KINEMATIC (RTK) GPS AND REFERENCED TO MLLW UTILIZING A HYPACK KINEMATIC TIDE DATUM (KTD) MODEL NAMED "SPC-FL-WEST-2010-12-07.KTD"
- ALL ELEVATIONS ARE BELOW THE CHART DATUM UNLESS PRECEDED BY A (+) SIGN.
- PLANE COORDINATES ARE BASED ON THE TRANSVERSE MERCATOR PROJECTION FOR THE WEST ZONE OF FLORIDA AND REFERENCED TO NORTH AMERICAN DATUM OF 1983 (NAD83).
- ALL AZIMUTHS ARE GRID; RECKONED CLOCKWISE FROM SOUTH.
- ALL STATIONING REFERS TO THE CENTERLINE OF THE CHANNEL.
- THIS SURVEY WAS PERFORMED USING REAL-TIME KINEMATIC (RTK) GPS POSITIONING WITH THE FOLLOWING REFERENCE BASE LOCATIONS:
REFERENCE BASE LOCATED AT "Q-261" (NGS PID: AG6024)
TIDE STAFF LOCATED FROM "Q-261" (NGS PID: AG6024)
- VERTICAL MEASUREMENTS WERE MADE USING A ROSS MODEL 835 SMARTSOUNDER WITH DUAL-FREQUENCY (28/200 KHZ) SINGLE-BEAM TRANSDUCER. SOUNDINGS SHOWN ARE IN LOW FREQUENCY.

VESSEL: WB-34
DATE OF SURVEY: 26-28 AUG 2014
CUT: ENTRANCE CHANNEL AND TURNING BASIN
- AIDS TO NAVIGATION WERE LOCATED DURING THIS SURVEY.
- THE INFORMATION DEPICTED ON THIS MAP REPRESENTS THE RESULTS OF SURVEYS MADE ON THE DATES INDICATED ABOVE AND CAN ONLY BE CONSIDERED AS INDICATING THE GENERAL CONDITIONS AT THAT TIME. THIS CHART IS SOLELY FOR THE DISTRIBUTION OF AVAILABLE DEPTHS AT THE TIME OF THE SURVEY.
- SURVEY ACCURACY PERFORMANCE STANDARDS, QUALITY CONTROL, AND QUALITY ASSURANCE REQUIREMENTS WERE FOLLOWED DURING THIS SURVEY IN ACCORDANCE WITH USACE EM 1110-2-1003, HYDROGRAPHIC SURVEYING, 30 NOV 13.

SURVEY ZONE	CUTS
8	ALAFIA RIVER ENTRANCE CHANNEL

LEGEND	
	MONUMENT
	LIGHTED BEACON
	GREEN DAYBEACON
	RED DAYBEACON
	RED LIGHTED BUOY
	GREEN LIGHTED BUOY
	CAN BUOY
	NUN BUOY
	TIDE STAFF
	PROJECT DEPTH

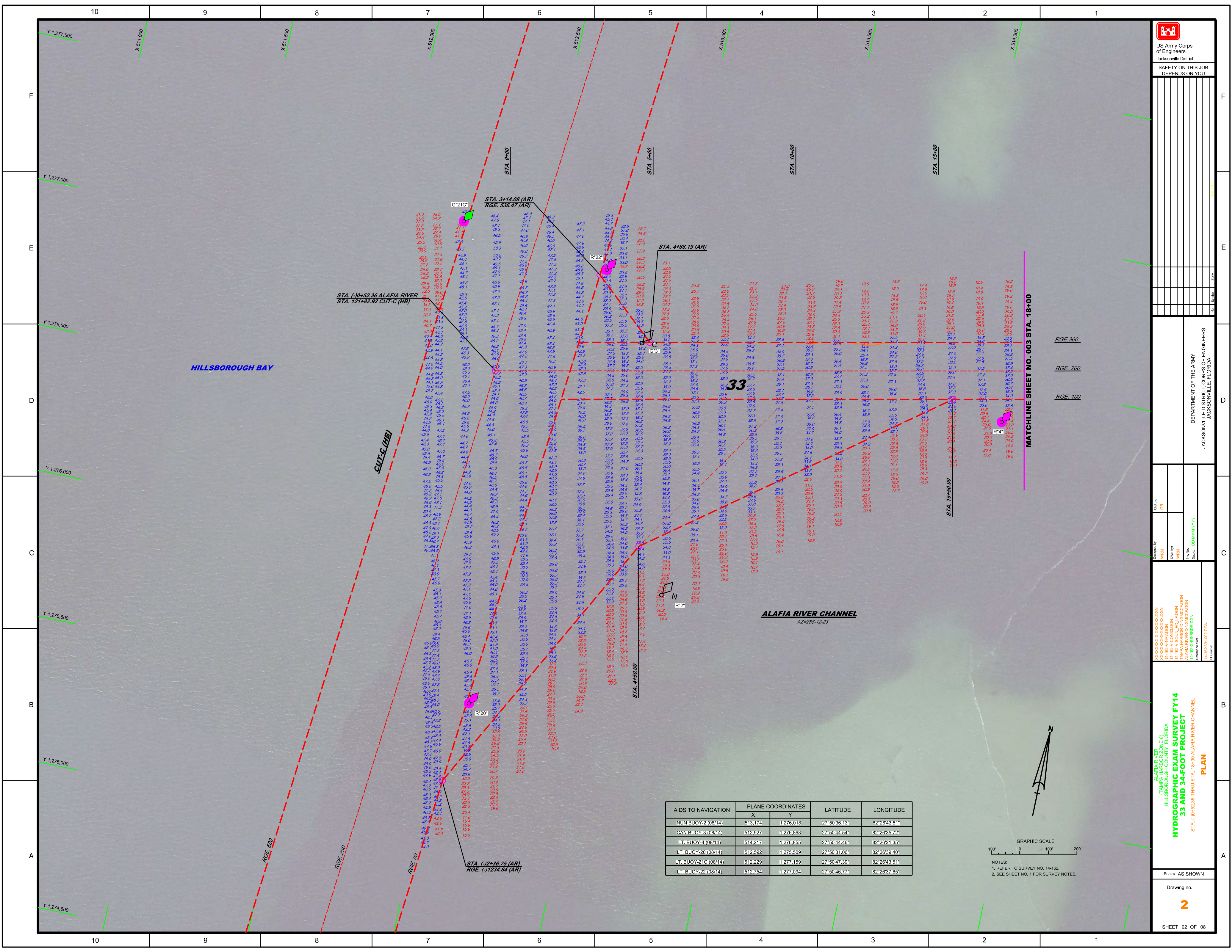
US Army Corps of Engineers
Jacksonville District
SAFETY ON THIS JOB DEPENDS ON YOU

Checked by: GR	Designed by: WRM	Drawn by: WRM	File Name: DD\MM\YYYY
Checked by: GR	Designed by: WRM	Drawn by: WRM	File Name: DD\MM\YYYY

DEPARTMENT OF THE ARMY
JACKSONVILLE DISTRICT, CORPS OF ENGINEERS
JACKSONVILLE, FLORIDA

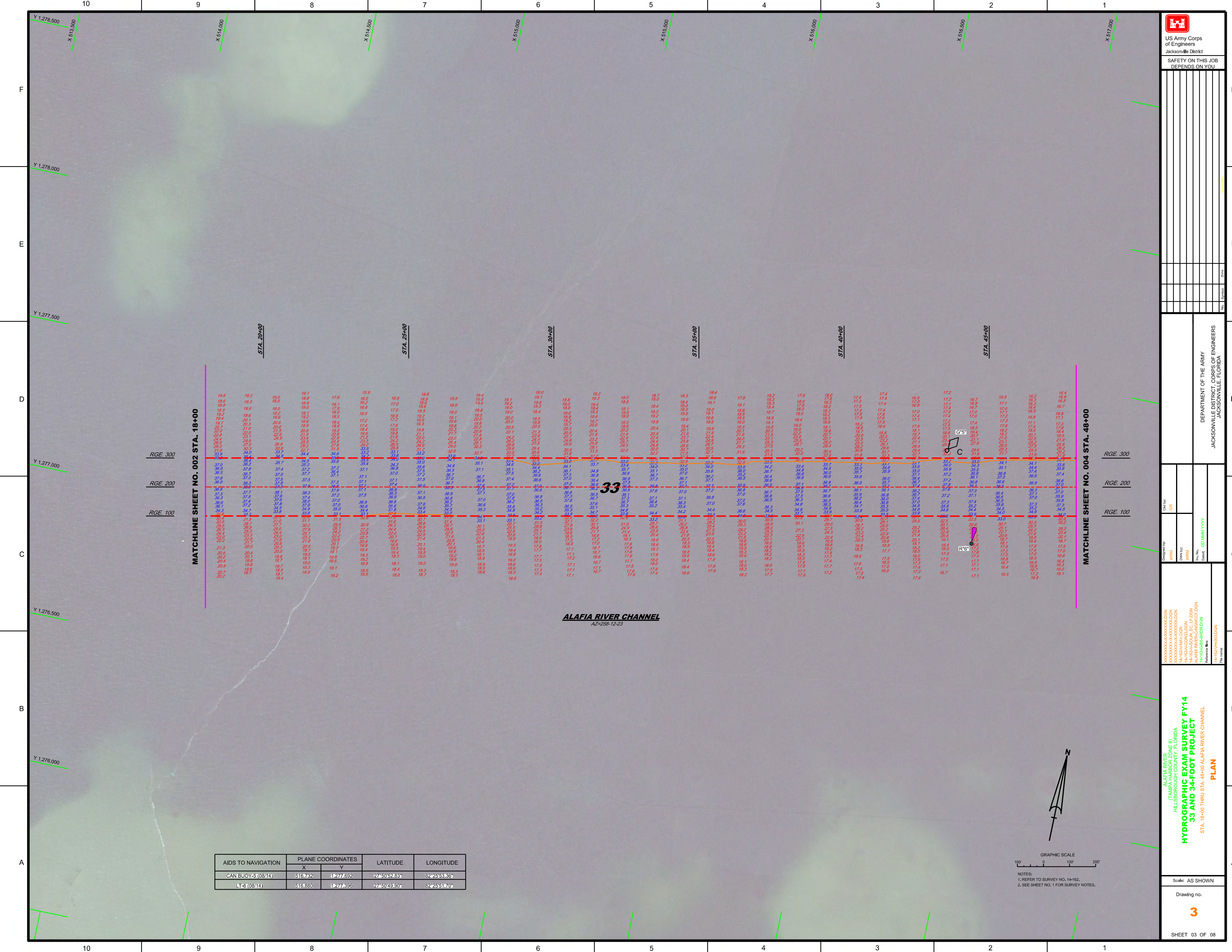
ALAFIA RIVER
(TAMPA HARBOR ZONE 8)
HILLSBOROUGH COUNTY, FLORIDA
HYDROGRAPHIC EXAM SURVEY FY14
33 AND 34-FOOT PROJECT
INDEX, LOCATION AND VICINITY MAP

Scale: AS SHOWN
Drawing no. 1
SHEET 01 OF 08



AIDS TO NAVIGATION	PLANE COORDINATES		LATITUDE	LONGITUDE
	X	Y		
NUN BUOY 2 (08/14)	519.174	1,276.018	27°50'36.13"	82°26'43.51"
CAN BUOY 3 (08/14)	512.927	1,276.868	27°50'44.54"	82°26'35.72"
LT BUOY 4 (08/14)	514.237	1,276.855	27°50'44.46"	82°26'21.35"
LT BUOY 20 (08/14)	512.592	1,275.509	27°50'31.06"	82°26'39.40"
LT BUOY 21C (08/14)	512.229	1,277.159	27°50'47.39"	82°26'43.51"
LT BUOY 22 (08/14)	512.754	1,277.094	27°50'46.77"	82°26'37.65"

GRAPHIC SCALE
0 100 200
NOTES:
1. REFER TO SURVEY NO. 14-162.
2. SEE SHEET NO. 1 FOR SURVEY NOTES.



Rev.	Description

DEPARTMENT OF THE ARMY
 JACKSONVILLE DISTRICT, CORPS OF ENGINEERS
 JACKSONVILLE, FLORIDA

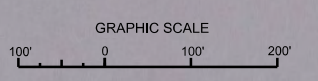
Drawn By: GRL	Checked By: GRL
Designed By: WRM	Reviewed By: WRM
Project No: WRM	Date: 00/00/00
Job No: WRM	Contract: 00/0000000

ALAFIA RIVER
 (TAMPA HARBOR ZONE 0)
 HILLSBOROUGH COUNTY, FLORIDA
HYDROGRAPHIC EXAM SURVEY FY14
33 AND 34-FOOT PROJECT
 STA. 19+00 THRU STA. 48+00 ALAFIA RIVER CHANNEL
 Reference: 14-1604/H400/DGN
 File Name:

PLAN

 Scale: AS SHOWN

AIDS TO NAVIGATION	PLANE COORDINATES		LATITUDE	LONGITUDE
	X	Y		
CAN BUOY-5 (08/14)	516.732	1277.892	27°50'52.83"	82°25'53.36"
LT-8 (08/14)	516.880	1277.895	27°50'49.90"	82°25'51.70"



NOTES:
 1. REFER TO SURVEY NO. 14-162.
 2. SEE SHEET NO. 1 FOR SURVEY NOTES.

MATCHLINE SHEET NO. 002 STA. 18+00

MATCHLINE SHEET NO. 004 STA. 48+00

ALAFIA RIVER CHANNEL
 AZ=258-12-23

33

G5

R5

Y 1,278,500
X 513,500

Y 1,278,000

Y 1,277,500

Y 1,277,000

Y 1,276,500

Y 1,276,000

Y 1,275,500

STA. 20+00

STA. 25+00

STA. 30+00

STA. 35+00

STA. 40+00

STA. 45+00

RGE. 300

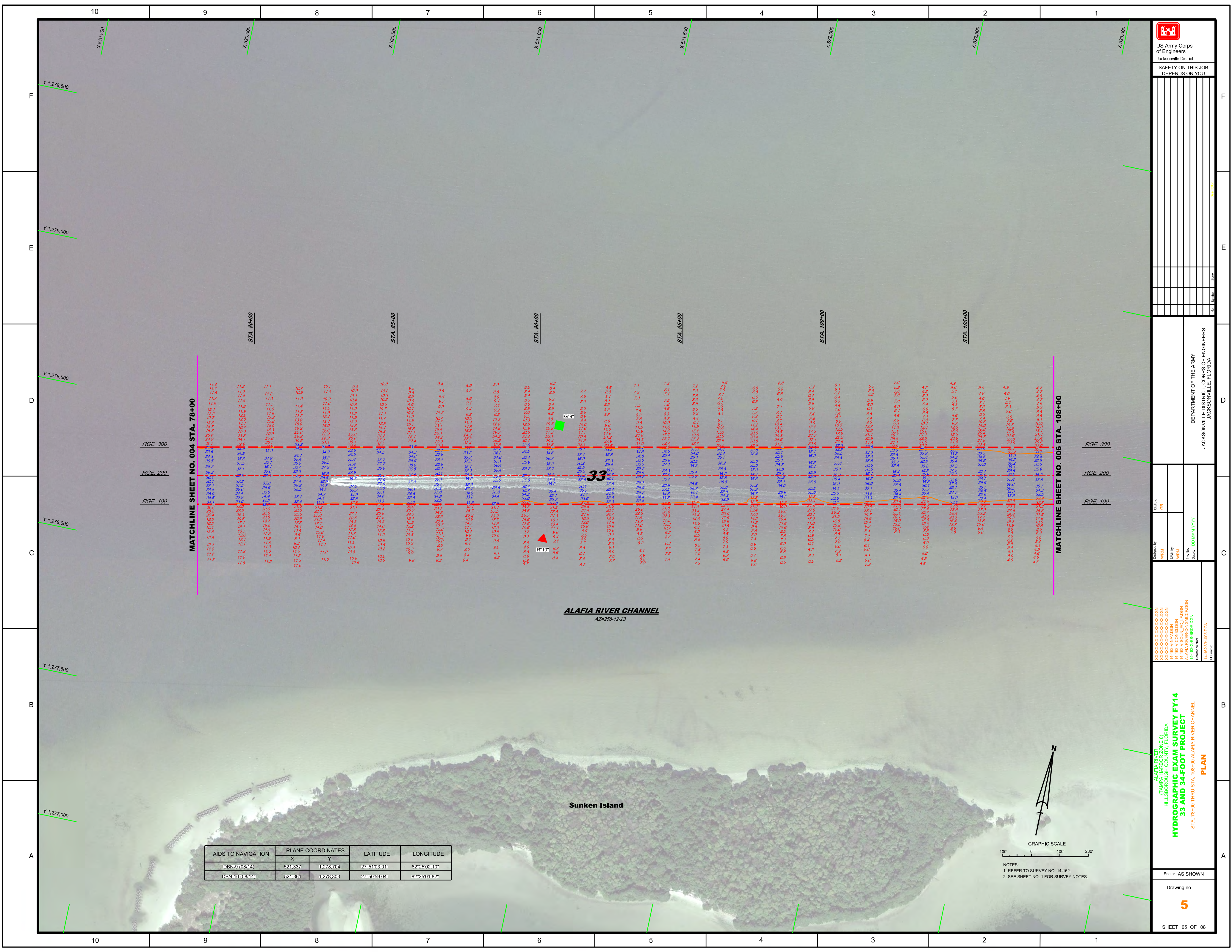
RGE. 200

RGE. 100

RGE. 300

RGE. 200

RGE. 100



MATCHLINE SHEET NO. 004 STA. 78+00

MATCHLINE SHEET NO. 006 STA. 108+00

STA.	11.4	11.2	11.1	10.7	10.7	8.9	10.0	9.5	9.4	8.9	8.9	8.2	8.3	7.7	8.5	7.1	7.3	7.2	7.3	6.9	6.8	6.2	6.1	5.5	5.9	5.9	4.9	4.7
RGE 300	11.4	11.2	11.1	10.7	10.7	8.9	10.0	9.5	9.4	8.9	8.9	8.2	8.3	7.7	8.5	7.1	7.3	7.2	7.3	6.9	6.8	6.2	6.1	5.5	5.9	5.9	4.9	4.7
RGE 200	33.6	34.8	33.9	34.5	34.2	34.6	34.5	34.3	33.4	33.2	33.9	34.2	34.0	35.1	34.8	34.5	34.0	34.3	34.4	34.4	35.4	35.1	33.8	34.2	33.7	33.5	33.9	32.5
RGE 100	36.1	37.1	36.1	36.7	37.2	35.7	35.7	35.7	35.7	35.7	35.7	35.7	35.7	35.7	35.7	35.7	35.7	35.7	35.7	35.7	35.7	35.7	35.7	35.7	35.7	35.7	35.7	35.7
33	36.1	37.1	36.1	36.7	37.2	35.7	35.7	35.7	35.7	35.7	35.7	35.7	35.7	35.7	35.7	35.7	35.7	35.7	35.7	35.7	35.7	35.7	35.7	35.7	35.7	35.7	35.7	35.7
10'	11.3	11.6	11.2	11.3	11.0	10.8	10.2	10.3	9.7	9.6	9.1	8.8	8.6	8.4	8.0	8.1	7.7	7.9	7.8	7.5	6.8	6.6	6.2	6.2	6.2	6.1	5.9	5.9

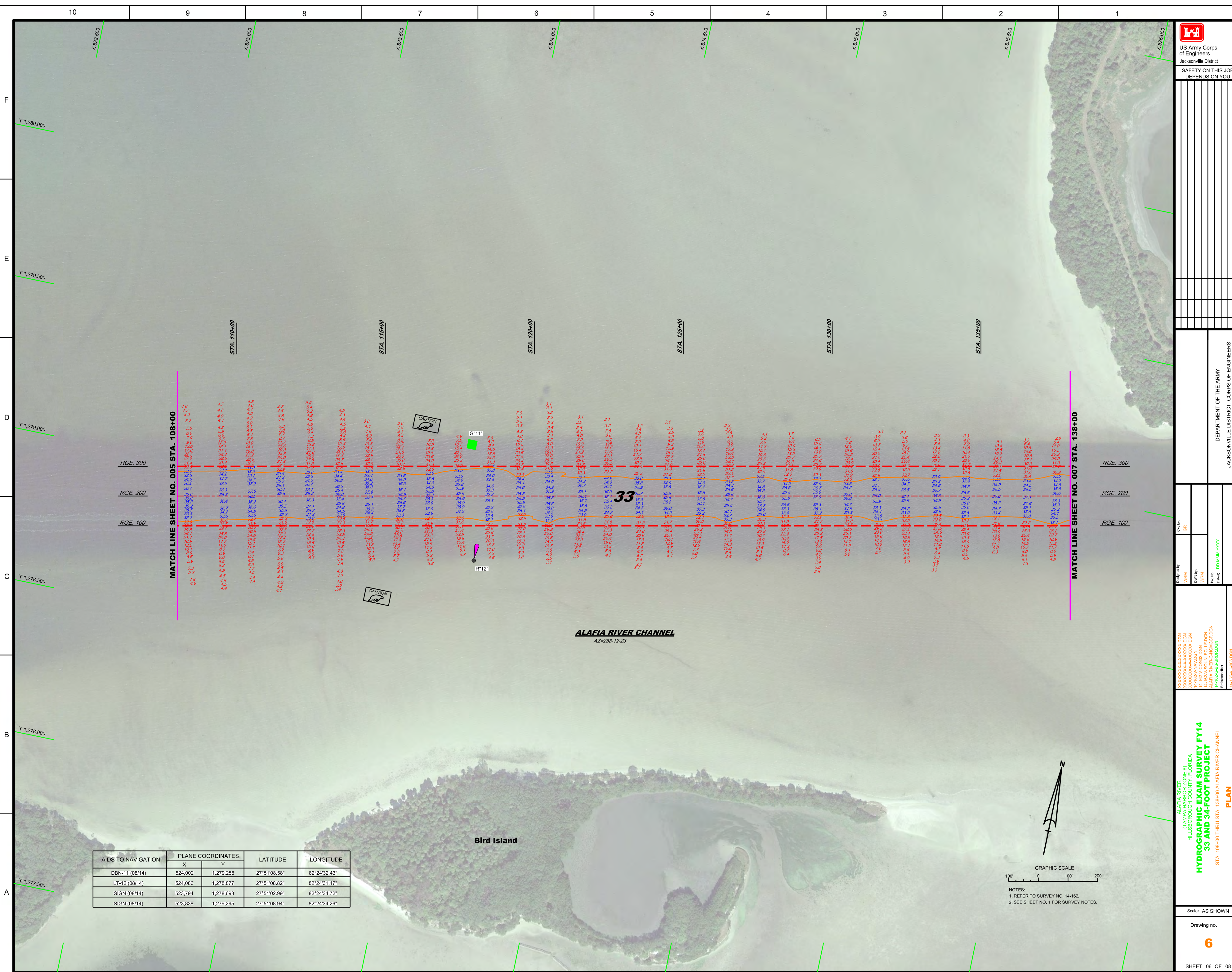
ALAFIA RIVER CHANNEL
AZ=288-12-23

Sunken Island

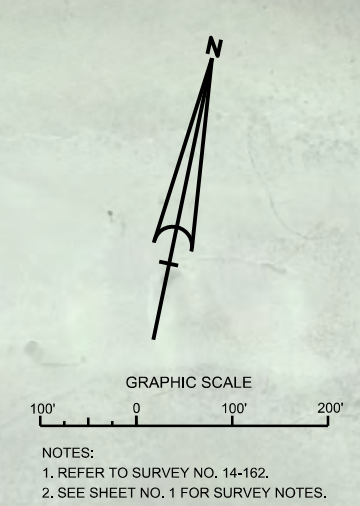
GRAPHIC SCALE
100' 0 100' 200'

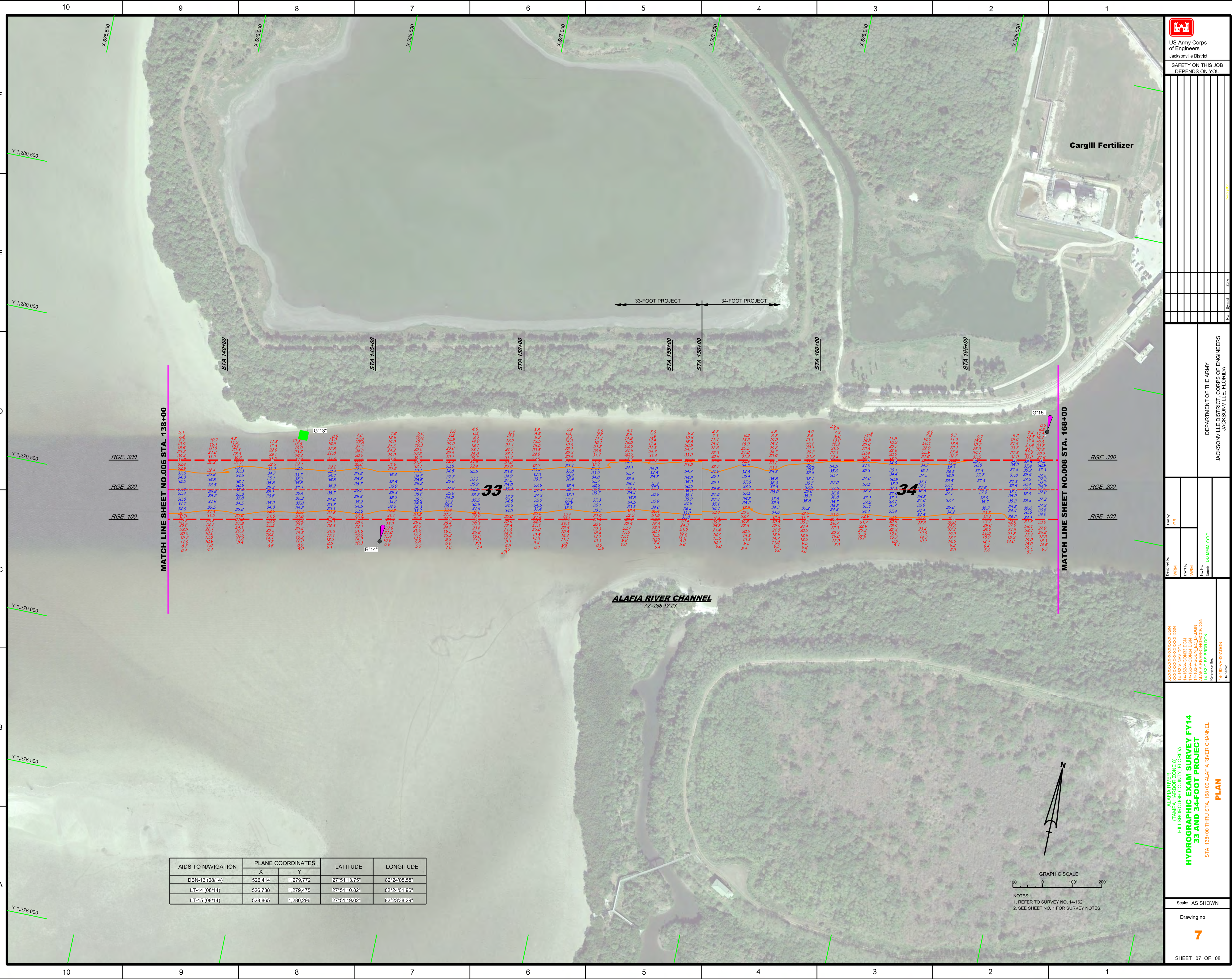
NOTES:
1. REFER TO SURVEY NO. 14-162.
2. SEE SHEET NO. 1 FOR SURVEY NOTES.

AIDS TO NAVIGATION	PLANE COORDINATES		LATITUDE	LONGITUDE
	X	Y		
DBN-9 (08/14)	521,337	1,278,704	27°51'03.01"	82°25'02.10"
DBN-10 (08/14)	521,361	1,278,303	27°50'59.04"	82°25'01.82"

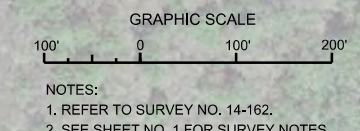


AIDS TO NAVIGATION	PLANE COORDINATES		LATITUDE	LONGITUDE
	X	Y		
DBN-11 (08/14)	524,002	1,279,258	27°51'08.58"	82°24'32.43"
LT-12 (08/14)	524,086	1,278,877	27°51'08.82"	82°24'31.47"
SIGN (08/14)	523,794	1,278,693	27°51'02.99"	82°24'34.72"
SIGN (08/14)	523,838	1,279,295	27°51'08.94"	82°24'34.26"





AIDS TO NAVIGATION	PLANE COORDINATES		LATITUDE	LONGITUDE
	X	Y		
DBN-13 (08/14)	526,414	1,279,772	27°51'13.75"	82°24'05.58"
LT-14 (08/14)	526,738	1,279,475	27°51'10.82"	82°24'01.96"
LT-15 (08/14)	528,865	1,280,296	27°51'19.02"	82°23'38.29"



MATCH LINE SHEET NO.006 STA. 138+00

MATCH LINE SHEET NO.008 STA. 168+00

X 526,500 X 526,000 X 525,500 X 527,000 X 527,500 X 528,000 X 528,500

Y 1,280,500 Y 1,280,000

Y 1,279,500

Y 1,279,000

Y 1,278,500

Y 1,278,000

STA 140+00 STA 145+00 STA 150+00 STA 155+00 STA 160+00 STA 165+00

33-FOOT PROJECT 34-FOOT PROJECT

G13

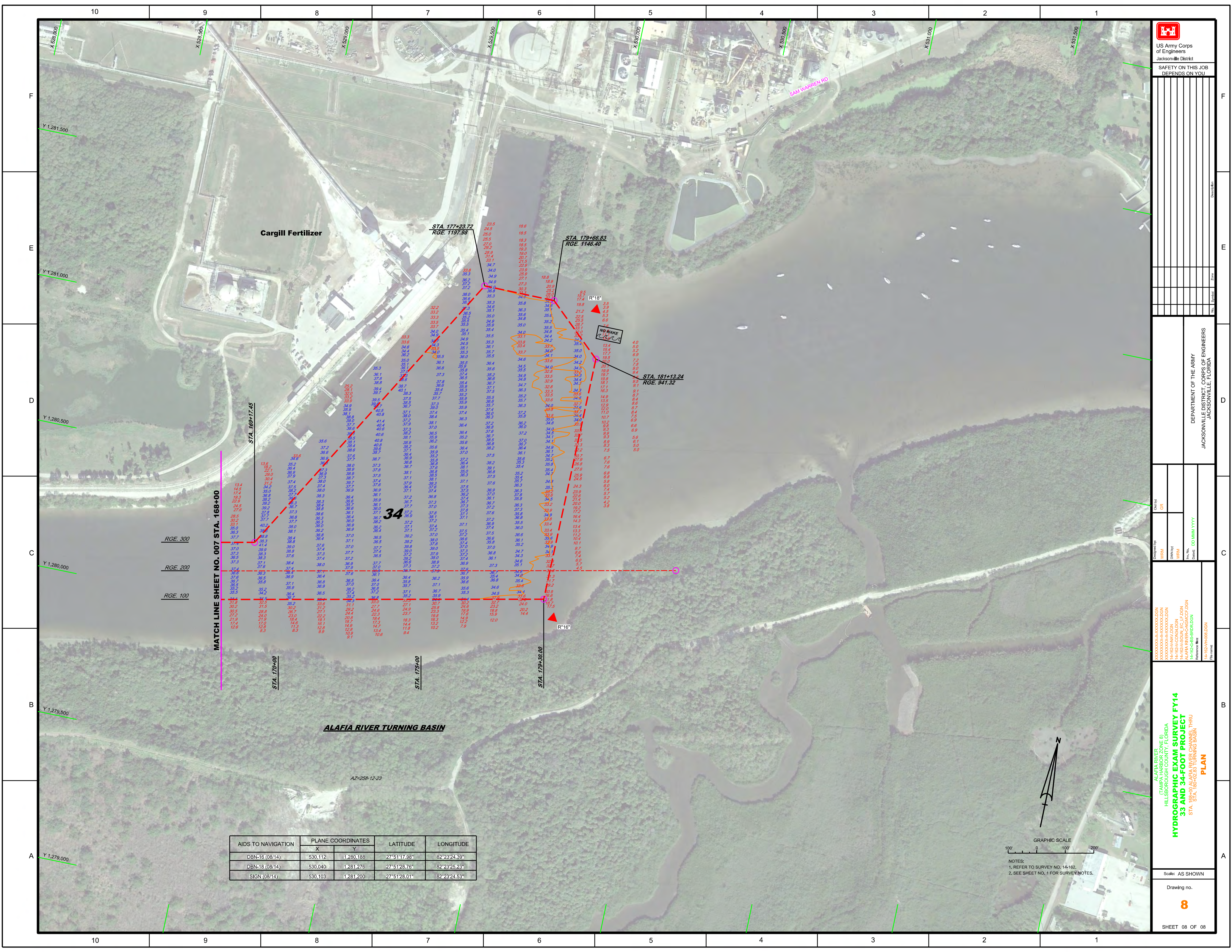
33

34

R14

ALAFIA RIVER CHANNEL
AZ=288-12-23

RGE 300 RGE 200 RGE 100



MATCH LINE SHEET NO. 007 STA. 168+00

RGE. 300
RGE. 200
RGE. 100

AIDS TO NAVIGATION	PLANE COORDINATES		LATITUDE	LONGITUDE
	X	Y		
DBN-16 (08/14)	530,112	1,280,188	27°51'17.98"	82°23'24.39"
DBN-18 (08/14)	530,040	1,281,276	27°51'28.76"	82°23'25.23"
SIGN (08/14)	530,103	1,281,200	27°51'28.01"	82°23'24.53"

GRAPHIC SCALE
100' 0 100' 200'

NOTES:
1. REFER TO SURVEY NO. 14-162.
2. SEE SHEET NO. 1 FOR SURVEY NOTES.

US Army Corps of Engineers
Jacksonville District
SAFETY ON THIS JOB
DEPENDS ON YOU

DEPARTMENT OF THE ARMY
JACKSONVILLE DISTRICT, CORPS OF ENGINEERS
JACKSONVILLE, FLORIDA

Drawn by: GRL
Checked by: GRL
Designated by: GRL
Title: HYDROGRAPHIC EXAM SURVEY FY14
Project: 33 AND 34-FOOT PROJECT
Sheet: STA. 168+00 ALAFIA RIVER CHANNEL THRU STA. 168+00 TO TURNING BASIN
Scale: AS SHOWN
Drawing no. 8
SHEET 08 OF 08