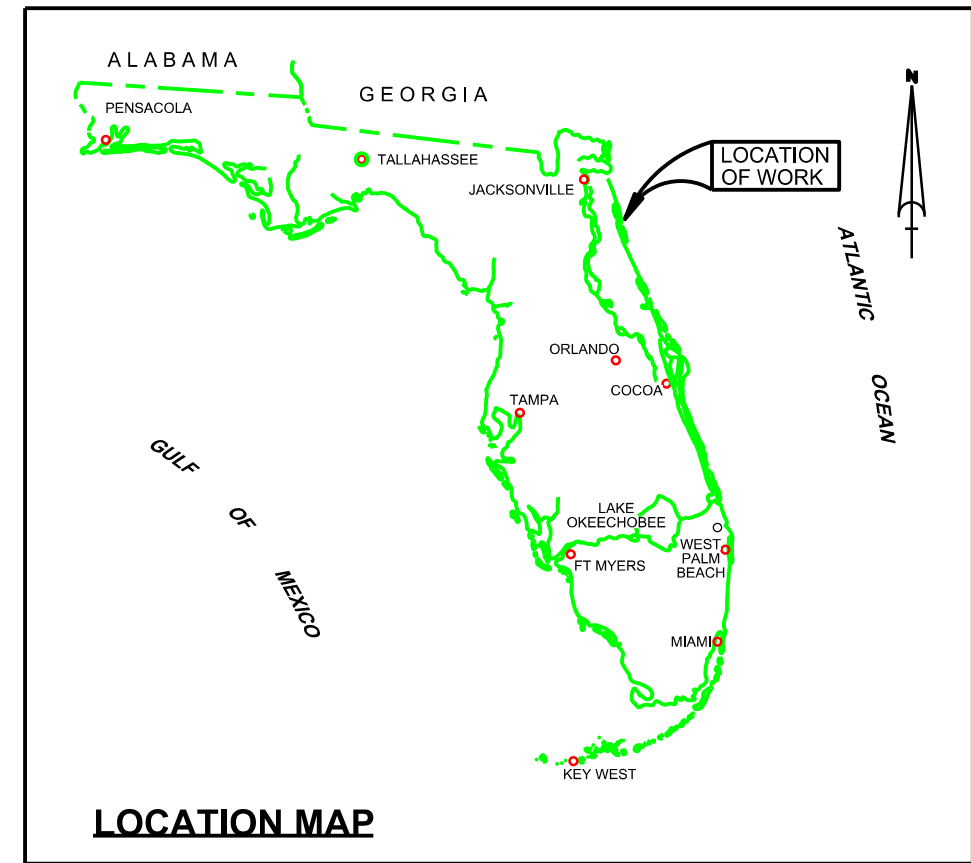


ST. AUGUSTINE INLET ST. JOHNS COUNTY, FLORIDA EXAMINATION SURVEY FY14 16-FOOT PROJECT



SURVEY NOTES

- REFER TO SURVEY NO. 14-123.
 - DEPTHS DEPICTED BY THIS SURVEY ARE REFERENCED TO MEAN LOWER LOW WATER (MLLW), TIDAL EPOCH 1983-2001, AS REPORTED BY THE NATIONAL OCEANIC AND ATMOSPHERIC ADMINISTRATION (NOAA). NOAA'S VDATUM MODEL WAS USED AND CALIBRATED TO THE PUBLISHED MLLW HEIGHTS OF THE BENCH MARKS ASSOCIATED WITH THE TIDE GAGE SITE SPECIFIED BELOW:

NOAA TIDAL STATION 872-0554, VILANO BEACH (ICWW)
 - TIDAL REDUCTIONS WERE OBTAINED UTILIZING A REAL-TIME KINEMATIC (RTK) GPS AND REFERENCED TO MLLW UTILIZING A HYPACK KINEMATIC TIDE DATUM (KTD) MODEL PRODUCED USING NOAA VDATUM. KTD FILE NAME IS: CAMDENG-NASSAU-DUVAL-STJOHNS-FLAGLER_01FEB2011.KTD.
 - ALL ELEVATIONS ARE BELOW THE CHART DATUM UNLESS PRECEDED BY A (+) SIGN.
 - PLANE COORDINATES ARE BASED ON THE TRANSVERSE MERCATOR PROJECTION FOR THE EAST ZONE OF FLORIDA AND REFERENCED TO NORTH AMERICAN DATUM OF 1983 (NAD83).
 - ALL AZIMUTHS ARE GRID; RECKONED CLOCKWISE FROM SOUTH.
 - ALL STATIONING REFERS TO THE CENTERLINE OF THE CHANNEL.
 - THIS SURVEY WAS PERFORMED USING REAL-TIME KINEMATIC GPS POSITIONING WITH THE FOLLOWING REFERENCE BASE LOCATIONS:

REFERENCE BASE LOCATED AT "RAMP RESET, 2010" (OPUS PID # BBBCB11)

TIDE STAFF LOCATED AT "872 0554B" (NGS PID # DL5712)
 - VERTICAL MEASUREMENTS WERE MADE USING A ROSS MODEL 835B DUAL-FREQUENCY 28/200 KHZ SMART SOUNDER. ALL DEPTHS SHOWN ARE IN HIGH FREQUENCY.
- | VESSEL | DATE OF SURVEY | CUT |
|--------|----------------|---|
| SB-46 | 09-11 SEP 2014 | ENTRANCE CHANNEL AND EXTENDED COVERAGE AREA |
- AIDS TO NAVIGATION WERE COLLECTED DURING THIS SURVEY.
 - THE INFORMATION DEPICTED ON THIS MAP REPRESENTS THE RESULTS OF SURVEYS MADE ON THE DATES INDICATED ABOVE AND CAN ONLY BE CONSIDERED AS INDICATING THE GENERAL CONDITIONS AT THAT TIME. THIS CHART IS SOLELY FOR THE DISTRIBUTION OF AVAILABLE DEPTHS AT THE TIME OF THE SURVEY.
 - SURVEY ACCURACY PERFORMANCE STANDARDS, QUALITY CONTROL, AND QUALITY ASSURANCE REQUIREMENTS WERE FOLLOWED DURING THIS SURVEY IN ACCORDANCE WITH USACE EM 1110-2-1003, HYDROGRAPHIC SURVEYING, 30 NOV 13.

LEGEND	
	MONUMENT
	LIGHTED BEACON
	GREEN DAYBEACON
	RED DAYBEACON
	RED LIGHTED BUOY
	GREEN LIGHTED BUOY
	CAN BUOY
	NUN BUOY
	TIDE STAFF
8	PROJECT DEPTH

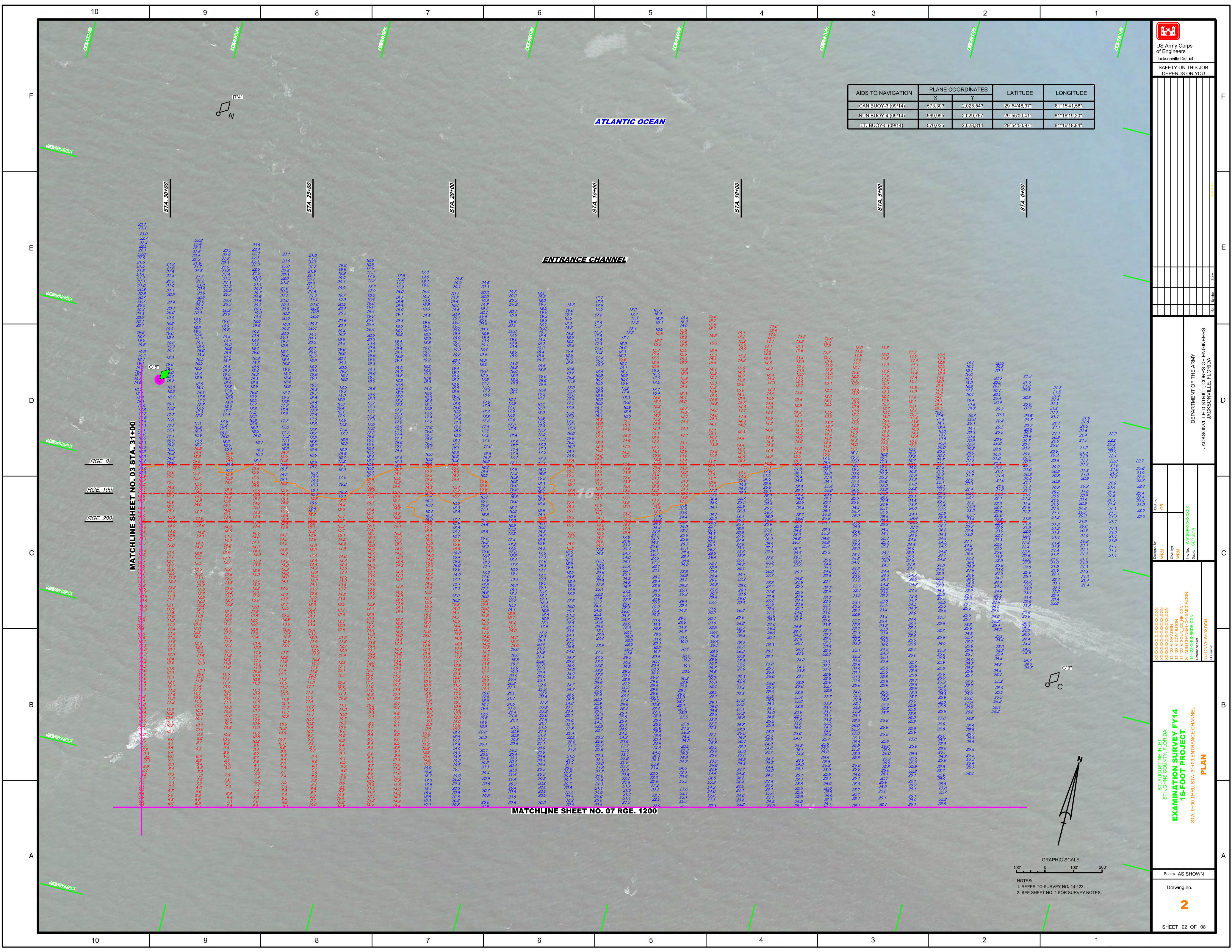
US Army Corps of Engineers
Jacksonville District
SAFETY ON THIS JOB
DEPENDS ON YOU

DEPARTMENT OF THE ARMY
JACKSONVILLE DISTRICT, CORPS OF ENGINEERS
JACKSONVILLE, FLORIDA

ST. AUGUSTINE INLET,
ST. JOHNS COUNTY, FLORIDA
EXAMINATION SURVEY FY14
16-FOOT PROJECT
INDEX, LOCATION AND VICINITY
MAP

Scale: AS SHOWN
Drawing no.
1

SHEET 01 OF 08



AIDS TO NAVIGATION	PLANE COORDINATES		LATITUDE	LONGITUDE
	X	Y		
CAN BUOY-3 (09/14)	573.303	2,028.543	29°54'48.37"	81°15'41.58"
NUN BUOY-4 (09/14)	569.995	2,029.767	29°55'00.31"	81°16'19.20"
LT. BUOY-5 (09/14)	570.025	2,028.814	29°54'50.97"	81°16'18.84"

US Army Corps of Engineers

 Jacksonville District

 SAFETY ON THIS JOB

 DEPENDS ON YOU

DEPARTMENT OF THE ARMY

 JACKSONVILLE DISTRICT CORPS OF ENGINEERS

 JACKSONVILLE, FLORIDA

Examined by: GRL

 Checked: SEP 2014

ST AUGUSTINE INLET, ST. JOHNS COUNTY, FLORIDA

 EXAMINATION SURVEY FY14

 16-FOOT PROJECT

 STA. 0+00 THRU STA. 31+00 ENTRANCE CHANNEL

 PLAN

SHEET 02 OF 08

GRAPHIC SCALE

 0 100 200

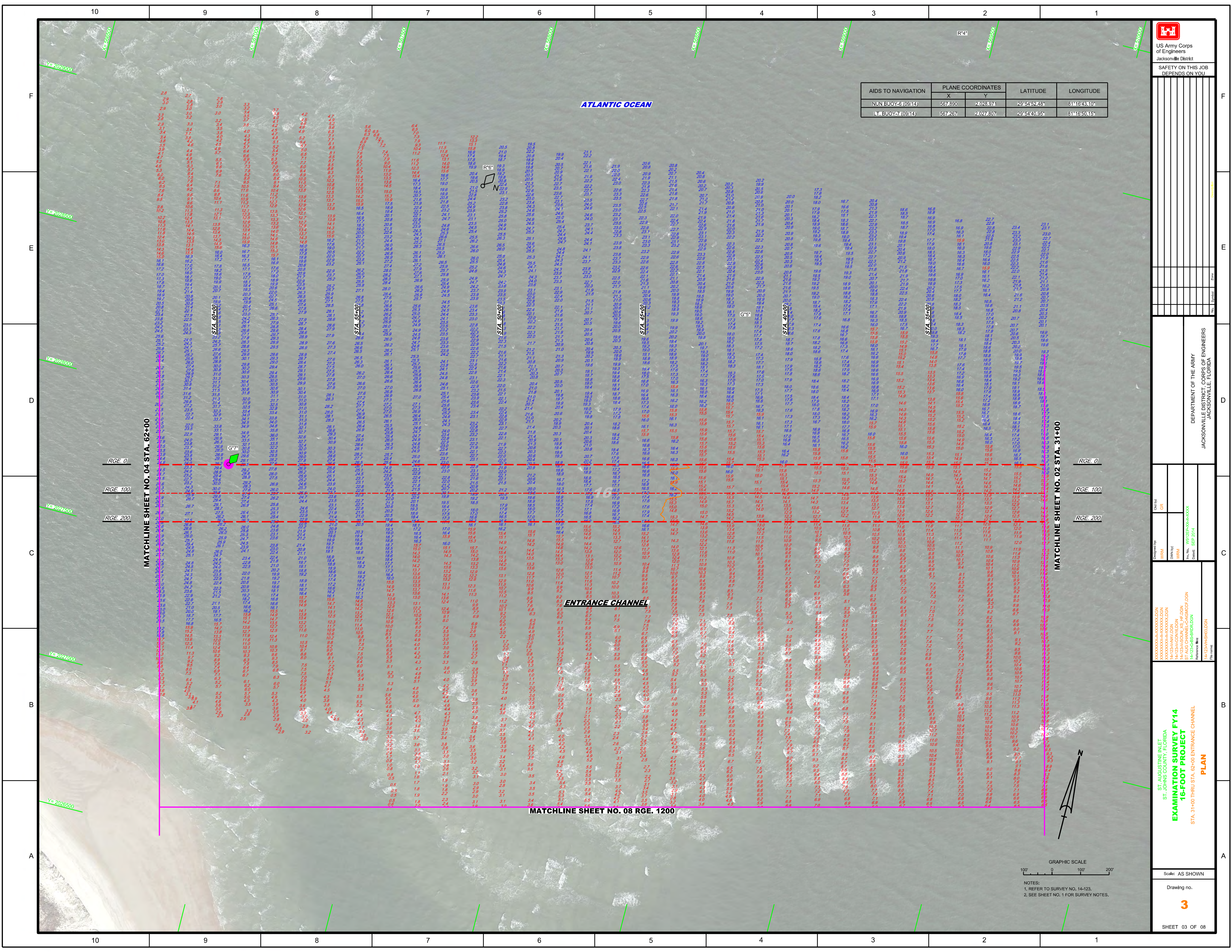
 NOTES:

 1. REFER TO SURVEY NO. 14-123.

 2. SEE SHEET NO. 1 FOR SURVEY NOTES.

Scale: AS SHOWN

 Drawing no.



AIDS TO NAVIGATION	PLANE COORDINATES		LATITUDE	LONGITUDE
	X	Y		
NUN BUOY-6 (09/14)	567.890	2,028.974	29°54'52.48"	81°16'43.10"
LT. BUOY-7 (09/14)	567.267	2,027.807	29°54'40.95"	81°16'50.15"

US Army Corps of Engineers
Jacksonville District

SAFETY ON THIS JOB DEPENDS ON YOU

DEPARTMENT OF THE ARMY
JACKSONVILLE DISTRICT, CORPS OF ENGINEERS
JACKSONVILLE, FLORIDA

ST. AUGUSTINE INLET
ST. JOHNS COUNTY, FLORIDA
EXAMINATION SURVEY FY14
16-FOOT PROJECT
STA. 31+00 THRU STA. 62+00 ENTRANCE CHANNEL
PLAN

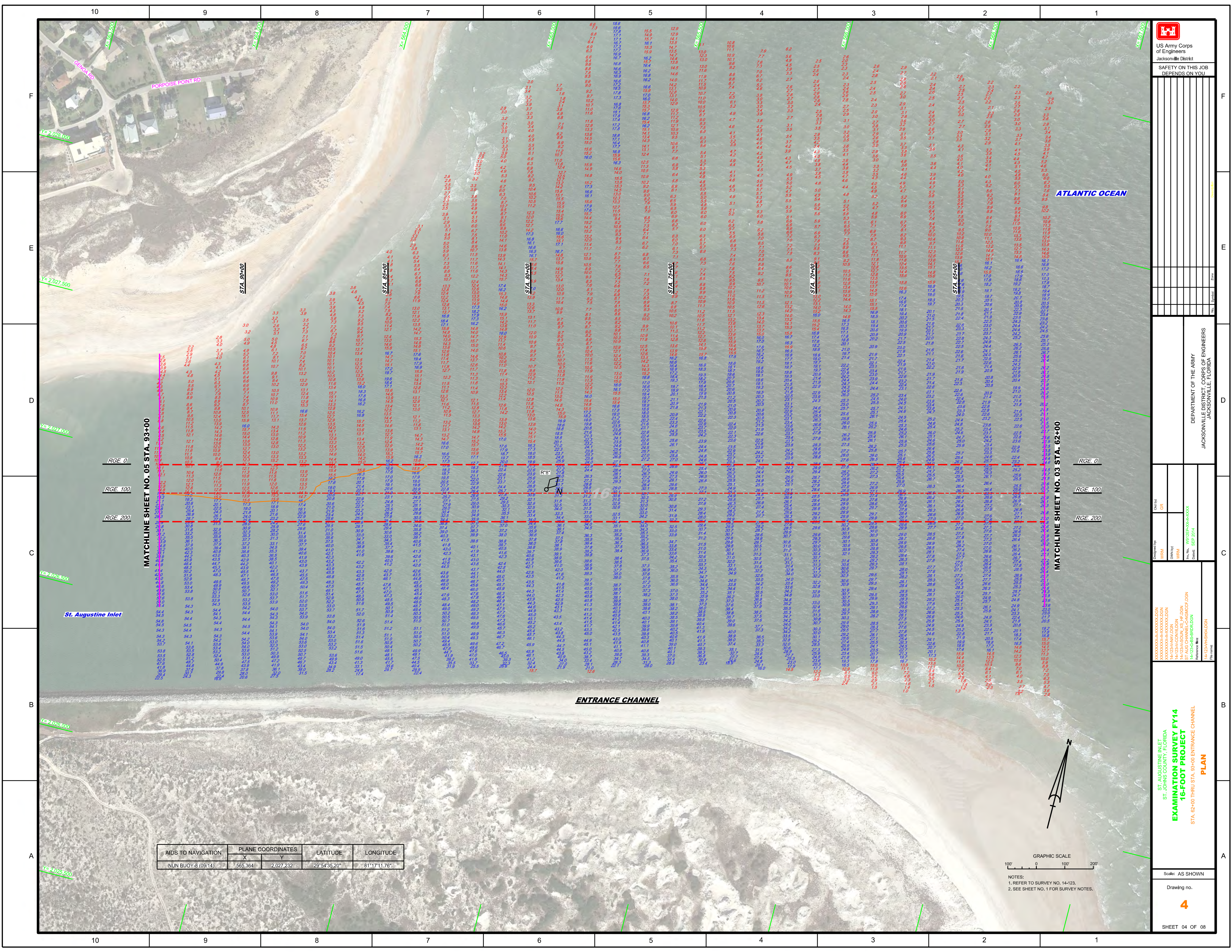
Scale: AS SHOWN

Drawing no. **3**

SHEET 03 OF 08

GRAPHIC SCALE
100' 0 100' 200'

NOTES:
1. REFER TO SURVEY NO. 14-123.
2. SEE SHEET NO. 1 FOR SURVEY NOTES.



US Army Corps of Engineers

 Jacksonville District

SAFETY ON THIS JOB

DEPENDS ON YOU

DEPARTMENT OF THE ARMY

 JACKSONVILLE DISTRICT, FLORIDA

 JACKSONVILLE DISTRICT CORPS OF ENGINEERS

 JACKSONVILLE, FLORIDA

AIDS TO NAVIGATION	PLANE COORDINATES		LATITUDE	LONGITUDE
	X	Y		
NUN BUOY-8 (09/14)	565,364	2,027,232	29°54'35.20"	81°17'11.76"

ST. AUGUSTINE INLET

 ST. JOHNS COUNTY, FLORIDA

EXAMINATION SURVEY FY14

16-FOOT PROJECT

 STA. 82+00 THRU STA. 83+00 ENTRANCE CHANNEL

PLAN

Scale: AS SHOWN

 Drawing No. **4**

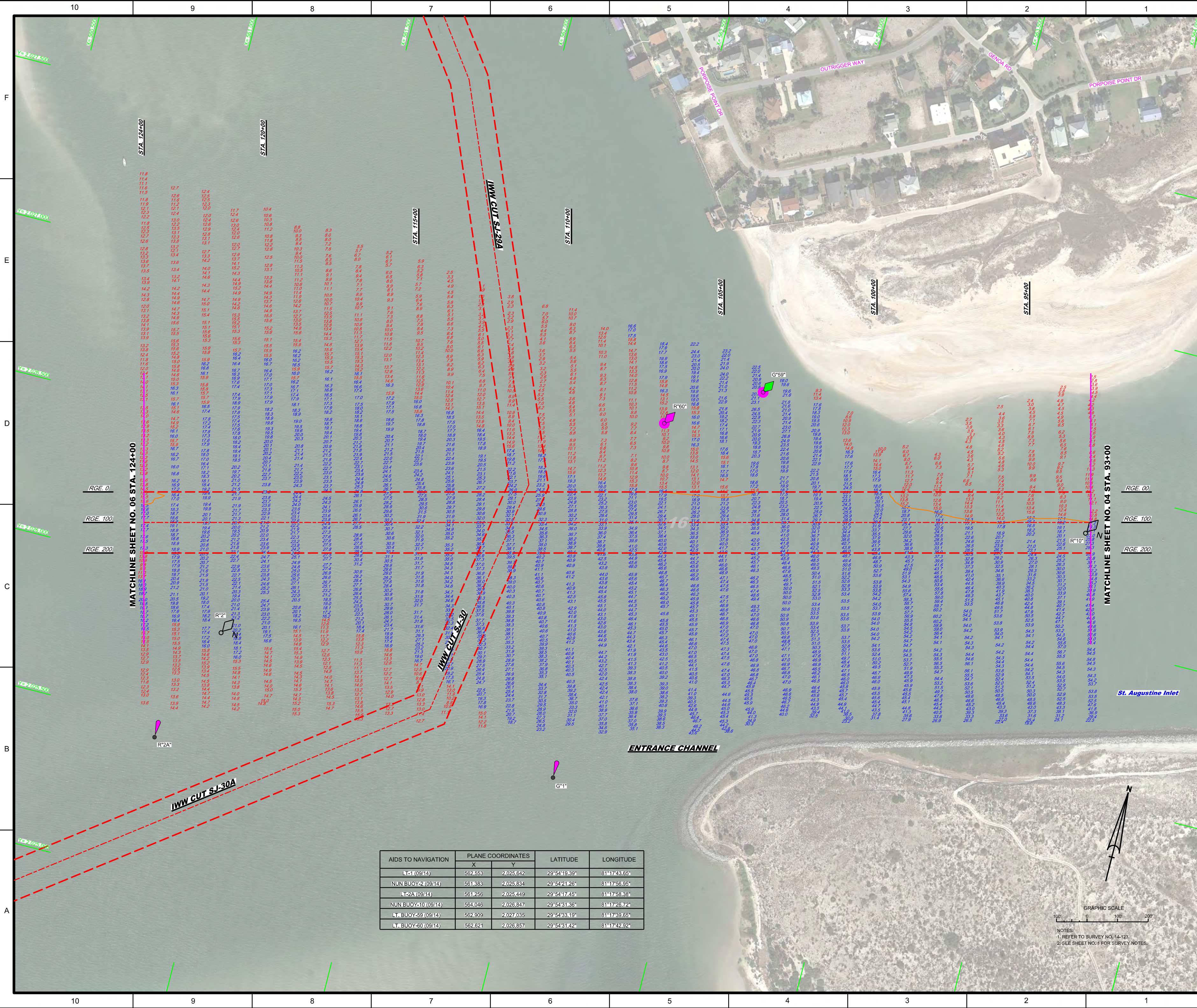
 SHEET 04 OF 08



NOTES:

 1. REFER TO SURVEY NO. 14-123.

 2. SEE SHEET NO. 1 FOR SURVEY NOTES.



AIDS TO NAVIGATION	PLANE COORDINATES		LATITUDE	LONGITUDE
	X	Y		
LT-1 (09/14)	562553	2,025,642	29°54'19.39"	81°17'43.65"
NUN BUOY-2 (09/14)	561888	2,025,884	29°54'21.26"	81°17'56.95"
LT-2A (09/14)	561256	2,025,449	29°54'17.45"	81°17'58.38"
NUN BUOY-10 (09/14)	564046	2,026,847	29°54'31.36"	81°17'26.72"
LT BUOY-59 (09/14)	562909	2,027,035	29°54'38.19"	81°17'39.65"
LT BUOY-60 (09/14)	562621	2,026,857	29°54'31.42"	81°17'42.92"

NOTES:
1. REFER TO SURVEY NO. 14-123.
2. SEE SHEET NO. 1 FOR SURVEY NOTES.

